

Damselfishes

DISTINCTIVE FEATURES: 1. Dorsal and anal fins extend beyond base of tail. (Similar Dusky [next] dorsal and anal fins are shorter and do not extend beyond tail base.) 2. Thin bright blue edge on anal fin. **JUVENILE:** Yellow-gold. 3. Brilliant blue lines run from snout to back usually over dusky undercolor (never the blue undercolor of Cocoa [pg. ???] and Beaugregory [pg. ???]).

DESCRIPTION: Usually brownish gray to nearly black, often with yellowish brown hue on head and upper forebody. **JUVENILE:** Large black spot ringed in blue on dorsal fin. **ABUNDANCE & DISTRIBUTION:** Common South Florida, Bahamas, Caribbean and Gulf of Mexico.

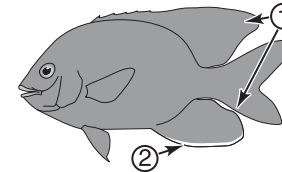
HABITAT & BEHAVIOR: Generally inhabit reefs between 15-80 feet, but frequently on shallower reefs in calm areas. Territorial; pugnaciously chase away intruders. **REACTION TO DIVERS:** Unafraid; aggressively attempt to chase divers from their territories.

LONGFIN DAMSELFISH

Stegastes diencaeus

FAMILY

Damselfishes -
Pomacentridae



SIZE: 2-4 in.,
max. 6 in.
DEPTH: 2 - 80 ft.



Longfin
Damselfish
Intermediate



Longfin
Damselfish
Juvenile

