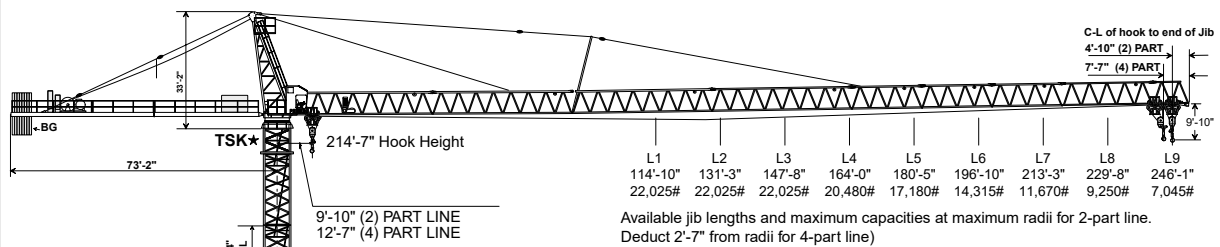




# PEINER SK 415

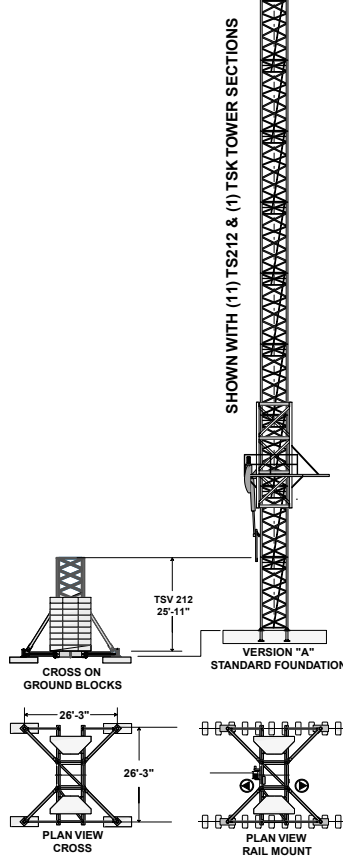
**Hammerhead Tower Crane**  
**22,025 – 44,050 lbs. (10 – 20 t)**  
**Lifting Capacity\***

## SPECIFICATIONS



### HOOK HEIGHT TABLE

★Version "A" (Without TSK 212 Section)		Version "A" (With TSK 212 Section)		Cross and Rail Mount (Without TSK 212 Section)	
TOWER TYPE	HOOK HEIGHT ft/m	TOWER TYPE	HOOK HEIGHT ft/m	TOWER TYPE	HOOK HEIGHT ft/m
TS212.1		TS 212.1		TSV 212/ TS 212.1	
11 x TS 212.1	208'-0"/63.4m**	11 x TS 212.1	214'-7"/65.4m**	1 x TSV 212	218'-6"/66.6m**
10 x TS 212.1	188'-8"/57.5m	10 x TS 212.1	195'-3"/59.5m	10 x TS 212.1	
9 x TS 212.1	169'-3"/51.6m	9 x TS 212.1	175'-10"/53.6m	1 x TSV 212	199'-2"/60.7m
8 x TS 212.1	149'-11"/45.7m	8 x TS 212.1	156'-6"/47.7m	9 x TS 212.1	1 x TSV 212
7 x TS 212.1	130'-7"/39.8m	7 x TS 212.1	137'-2"/41.8m	8 x TS 212.1	179'-9"/54.8m
6 x TS 212.1	111'-3"/33.9m	6 x TS 212.1	117'-10"/35.9m	1 x TSV 212	160'-5"/48.9m
5 x TS 212.1	91'-10"/28.0m	5 x TS 212.1	98'-5"/30.0m	7 x TS 212.1	1 x TSV 212
4 x TS 212.1	72'-6"/22.1m	4 x TS 212.1	79'-1"/24.1m	6 x TS 212.1	141'-1"/43.0m
3 x TS 212.1	53'-2"/16.2m	3 x TS 212.1	59'-9"/18.2m	1 x TSV 212	121'-9"/37.1m
2 x TS 212.1	33'-10"/10.3m	2 x TS 212.1	40'-5"/12.3m	5 x TS 212.1	1 x TSV 212
The above uses standard FF 212 anchor stools.					
<p>★ TSK 212 section <b>MUST</b> be installed for any top climbing applications.</p> <p>**Lower climbing unit if utilized.</p> <p>Tower configurations based on 95 mph wind speeds.</p>					
				1 x TSV 212	102'-4"/31.2m
				4 x TS 212.1	1 x TSV 212
				3 x TS 212.1	83'-0"/25.3m
				1 x TSV 212	63'-8"/19.4m
				2 x TS 212.1	1 x TSV 212
				1 x TS 212.1	44'-3"/13.5m
<p>NOTE: ADD 6' 7" TO THE ABOVE HOOK HEIGHT IF TSK 212 SECTION IS UTILIZED.</p>					



\*Optional hoist winches allow maximum capacities to be increased to **25,555 – 55,115 lbs. (12.5 – 25.0 t)** lifting capacity. Contact factory for details.

Machines shown may have optional equipment.

simple, available and cost effective™



## LOAD CHARTS FOR 2-PART LINE (US / METRIC)



### 2-PART LINE WB 76-100/4F ~108 HP (76 kW) Hoist Winch

(pounds / feet)

(metric tons / meters)

Hook Radius [ft.]	AVAILABLE JIB LENGTHS IN FEET								
	L9	L8	L7	L6	L5	L4	L3	L2	L1
▼	246	229.6	213.2	196.8	180.4	164	147.6	131.2	114.8
9.8	22025	22025	22025	22025	22025	22025	22025	22025	22025
101.7	22025	22025	22025	22025	22025	22025	22025	22025	22025
105.0	21880	22025	22025	22025	22025	22025	22025	22025	22025
108.2	21085	22025	22025	22025	22025	22025	22025	22025	22025
111.5	20340	22025	22025	22025	22025	22025	22025	22025	22025
114.8	19635	22025	22025	22025	22025	22025	22025	22025	<b>22025</b>
118.1	18975	21770	22025	22025	22025	22025	22025	22025	
121.4	18350	21065	22025	22025	22025	22025	22025	22025	
124.6	17755	20400	22025	22025	22025	22025	22025	22025	
127.9	17195	19770	22025	22025	22025	22025	22025	22025	
131.2	16660	19170	21480	22025	22025	22025	22025	<b>22025</b>	
134.5	16155	18605	20855	22025	22025	22025	22025		
137.8	15670	18060	20260	22025	22025	22025	22025		
141.0	15215	17545	19695	21575	22025	22025	22025		
144.3	14775	17055	19150	20990	22025	22025	22025		
147.6	14355	16585	18635	20430	21905	22025	<b>22025</b>		
150.9	13955	16135	18140	19900	21335	22025			
154.2	13575	15705	17665	19385	20795	22025			
157.4	13210	15295	17215	18900	20275	21505			
160.7	12855	14900	16780	18430	19780	20985			
164.0	12520	14520	16365	17980	19300	<b>20480</b>			
167.3	12195	14160	15965	17545	18840				
170.6	11885	13810	15580	17130	18400				
173.8	11585	13475	15210	16735	17980				
177.1	11300	13150	14855	16350	17570				
180.4	11020	12840	14510	15980	<b>17180</b>				
183.7	10755	12540	14180	15620					
187.0	10495	12250	13865	15275					
190.2	10250	11970	13555	14945					
193.5	10010	11700	13260	14625					
196.8	9775	11440	12970	<b>14315</b>					
200.1	9550	11190	12695						
203.4	9335	10945	12425						
206.6	9125	10710	12165						
209.9	8920	10480	11915						
213.2	8725	10260	<b>11670</b>						
216.5	8535	10045							
219.8	8350	9835							
223.0	8170	9635							
226.3	7995	9440							
229.6	7825	9250							
229.6	7825	<b>9250</b>							
232.9	7660								
236.2	7500								
239.4	7345								
242.7	7195								
246.0	<b>7045</b>								

Hook Radius [m.]	AVAILABLE JIB LENGTHS IN METERS								
	L9	L8	L7	L6	L5	L4	L3	L2	L1
▼	(75m)	(70m)	(65m)	(60m)	(55m)	(50m)	(45m)	(40m)	(35m)
3.00	10.00	10.00	10.00	10.00	10.00	10.00	10.00	10.00	10.00
31.00	10.00	10.00	10.00	10.00	10.00	10.00	10.00	10.00	10.00
32.00	9.93	10.00	10.00	10.00	10.00	10.00	10.00	10.00	10.00
33.00	9.57	10.00	10.00	10.00	10.00	10.00	10.00	10.00	10.00
34.00	9.23	10.00	10.00	10.00	10.00	10.00	10.00	10.00	10.00
35.00	8.92	10.00	10.00	10.00	10.00	10.00	10.00	10.00	<b>10.00</b>
36.00	8.62	9.88	10.00	10.00	10.00	10.00	10.00	10.00	
37.00	8.33	9.57	10.00	10.00	10.00	10.00	10.00	10.00	
38.00	8.06	9.26	10.00	10.00	10.00	10.00	10.00	10.00	
39.00	7.81	8.98	10.00	10.00	10.00	10.00	10.00	10.00	
40.00	7.56	8.70	9.75	10.00	10.00	10.00	10.00	<b>10.00</b>	
41.00	7.34	8.45	9.47	10.00	10.00	10.00	10.00		
42.00	7.12	8.20	9.20	10.00	10.00	10.00	10.00		
43.00	6.91	7.97	8.94	9.80	10.00	10.00	10.00		
44.00	6.71	7.74	8.70	9.53	10.00	10.00	10.00		
45.00	6.52	7.53	8.46	9.28	9.94	10.00	<b>10.00</b>		
46.00	6.34	7.33	8.24	9.03	9.69	10.00			
47.00	6.16	7.13	8.02	8.80	9.44	10.00			
48.00	6.00	6.94	7.82	8.58	9.21	9.77			
49.00	5.84	6.77	7.62	8.37	8.98	9.53			
50.00	5.69	6.59	7.43	8.16	8.76	<b>9.30</b>			
51.00	5.54	6.43	7.25	7.97	8.56				
52.00	5.40	6.27	7.07	7.78	8.36				
53.00	5.26	6.12	6.91	7.60	8.16				
54.00	5.13	5.97	6.74	7.42	7.98				
55.00	5.01	5.83	6.59	7.26	<b>7.80</b>				
56.00	4.88	5.69	6.44	7.09					
57.00	4.77	5.56	6.29	6.94					
58.00	4.65	5.44	6.16	6.79					
59.00	4.55	5.31	6.02	6.64					
60.00	4.44	5.20	5.89	<b>6.50</b>					
61.00	4.34	5.08	5.76						
62.00	4.24	4.97	5.64						
63.00	4.14	4.86	5.52						
64.00	4.05	4.76	5.41						
65.00	3.96	4.66	<b>5.30</b>						
66.00	3.88	4.56							
67.00	3.79	4.47							
68.00	3.71	4.38							
69.00	3.63	4.29							
70.00	3.55	4.20							
70.00	3.55	<b>4.20</b>							
71.00	3.48								
72.00	3.41								
73.00	3.34								
74.00	3.27								
75.00	<b>3.20</b>								

"A"	7045	9250	11670	14315	17180	20480	22025	22025	22025
"B"	246	229.6	213.2	196.8	180.4	164	147.6	131.2	114.8
"C"	103.6	116.8	128.5	139.1	147.6	155.1	147.6	131.2	114.8

"A"	3.2	4.2	5.3	6.5	7.8	9.3	10	10	10
"B"	75	70	65	60	55	50	45	40	35
"C"	31.6	35.6	39.2	42.4	45.0	47.3	45	40	35

"A"= Load at maximum radius (pounds)  
 "B"= Maximum radius (feet)  
 "C"= Radius with maximum load (feet)

"A"= Load at maximum radius (metric tons)  
 "B"= Maximum radius (meters)  
 "C"= Radius with maximum load (meters)

Machines shown may have optional equipment.

simple. available and cost effective™



**LOAD CHARTS FOR 4-PART LINE (US / METRIC)**



**4-PART LINE WB 76-100/4F ~108 HP (76 kW) Hoist Winch**  
(pounds / feet)

(metric tons / meters)

Hook Radius [ft]	AVAILABLE JIB LENGTHS IN FEET								
	L9	L8	L7	L6	L5	L4	L3	L2	L1
	242.7	226.3	209.9	193.5	177.1	160.7	144.3	127.9	111.5
13.1	44050	44050	44050	44050	44050	44050	44050	44050	44050
55.8	44050	44050	44050	44050	44050	44050	44050	44050	44050
59.0	42605	44050	44050	44050	44050	44050	44050	44050	44050
62.3	39880	44050	44050	44050	44050	44050	44050	44050	44050
65.6	37450	42360	44050	44050	44050	44050	44050	44050	44050
68.9	35260	39925	44050	44050	44050	44050	44050	44050	44050
72.2	33285	37720	41775	44050	44050	44050	44050	44050	44050
75.4	31490	35725	39590	42945	44050	44050	44050	44050	44050
78.7	29850	33900	37600	40805	44050	44050	44050	44050	44050
82.0	28360	32235	35780	38850	41315	44050	44050	44050	44050
85.3	27000	30725	34130	37080	39445	41515	42650	44050	44050
88.6	25750	29335	32605	35440	37715	39710	40800	41510	41740
91.8	24590	28040	31195	33925	36115	38035	39085	39770	39990
95.1	23515	26840	29880	32515	34630	36480	37495	38155	38365
98.4	22510	25725	28660	31205	33245	35030	36015	36650	36855
101.7	21570	24680	27520	29980	31955	33680	34630	35245	35440
105.0	20695	23705	26450	28835	30745	32415	33330	33930	34120
108.2	19875	22785	25450	27755	29610	31230	32115	32695	32880
<b>111.5</b>	19100	21925	24510	26745	28540	30115	30975	31535	<b>31715</b>
111.5	19100	21925	24510	26745	28540	30115	30975	31535	
114.8	18370	21115	23625	25795	27540	29065	29900	30445	
118.1	17685	20350	22785	24900	26590	28075	28885	29415	
121.4	17035	19630	22000	24050	25695	27135	27930	28440	
124.6	16425	18945	21250	23250	24850	26250	27020	27520	
<b>127.9</b>	15840	18300	20545	22490	24050	25415	26160	<b>26650</b>	
127.9	15840	18300	20545	22490	24050	25415	26160		
131.2	15290	17685	19870	21765	23285	24615	25345		
134.5	14765	17100	19235	21080	22565	23860	24575		
137.8	14270	16545	18625	20430	21875	23140	23835		
141.0	13795	16015	18045	19810	21220	22455	23135		
<b>144.3</b>	13340	15510	17495	19215	20595	21800	<b>22465</b>		
144.3	13340	15510	17495	19215	20595	21800			
147.6	12905	15030	16970	18650	20000	21180			
150.9	12495	14570	16465	18110	19425	20580			
154.2	12100	14130	15985	17590	18880	20010			
157.4	11720	13705	15525	17095	18360	19465			
<b>160.7</b>	11355	13305	15080	16620	17860	<b>18940</b>			
160.7	11355	13305	15080	16620	17860				
164.0	11010	12915	14655	16165	17380				
167.3	10675	12540	14250	15730	16915				
170.6	10350	12185	13860	15310	16475				
173.8	10045	11840	13480	14905	16045				
<b>177.1</b>	9745	11510	13120	14515	<b>15635</b>				
177.1	9745	11510	13120	14515					
180.4	9460	11190	12770	14140					
183.7	9185	10885	12435	13780					
187.0	8915	10585	12110	13435					
190.2	8660	10300	11800	13095					
<b>193.5</b>	8410	10025	11495	<b>12775</b>					
193.5	8410	10025	11495						
196.8	8170	9755	11205						
200.1	7940	9500	10920						
203.4	7715	9250	10650						
206.6	7500	9010	10385						
<b>209.9</b>	7290	8775	<b>10130</b>						
209.9	7290	8775							
213.2	7085	8545							
216.5	6890	8325							
219.8	6695	8115							
223.0	6510	7905							
<b>226.3</b>	6330	<b>7705</b>							
226.3	6330								
229.6	6155								
232.9	5985								
236.2	5820								
239.4	5660								
<b>242.7</b>	<b>5505</b>								

Hook Radius [m]	AVAILABLE JIB LENGTHS IN METERS								
	L9	L8	L7	L6	L5	L4	L3	L2	L1
	74(m)	69(m)	64(m)	59(m)	54(m)	49(m)	44(m)	39(m)	34(m)
4.00	20.00	20.00	20.00	20.00	20.00	20.00	20.00	20.00	20.00
17.00	20.00	20.00	20.00	20.00	20.00	20.00	20.00	20.00	20.00
18.00	19.34	20.00	20.00	20.00	20.00	20.00	20.00	20.00	20.00
19.00	18.11	20.00	20.00	20.00	20.00	20.00	20.00	20.00	20.00
20.00	17.00	19.23	20.00	20.00	20.00	20.00	20.00	20.00	20.00
21.00	16.01	18.13	20.00	20.00	20.00	20.00	20.00	20.00	20.00
22.00	15.11	17.13	18.97	20.00	20.00	20.00	20.00	20.00	20.00
23.00	14.30	16.22	17.98	19.50	20.00	20.00	20.00	20.00	20.00
24.00	13.55	15.39	17.07	18.53	20.00	20.00	20.00	20.00	20.00
25.00	12.88	14.64	16.25	17.64	18.76	20.00	20.00	20.00	20.00
26.00	12.26	13.95	15.50	16.84	17.91	18.85	19.36	20.00	20.00
27.00	11.69	13.32	14.80	16.09	17.12	18.03	18.52	18.85	18.95
28.00	11.17	12.73	14.16	15.40	16.40	17.27	17.75	18.06	18.16
29.00	10.68	12.19	13.57	14.76	15.72	16.56	17.02	17.32	17.42
30.00	10.22	11.68	13.01	14.17	15.09	15.91	16.35	16.64	16.73
31.00	9.79	11.21	12.49	13.61	14.51	15.29	15.72	16.00	16.09
32.00	9.40	10.76	12.01	13.09	13.96	14.72	15.13	15.40	15.49
33.00	9.02	10.35	11.56	12.60	13.44	14.18	14.58	14.84	14.93
<b>34.00</b>	8.67	9.96	11.13	12.14	12.96	13.67	14.06	14.32	<b>14.40</b>
34.00	8.67	9.96	11.13	12.14	12.96	13.67	14.06	14.32	
35.00	8.34	9.59	10.73	11.71	12.50	13.20	13.58	13.82	
36.00	8.03	9.24	10.35	11.30	12.07	12.75	13.12	13.36	
37.00	7.74	8.91	9.99	10.92	11.67	12.32	12.68	12.91	
38.00	7.46	8.60	9.65	10.56	11.28	11.92	12.27	12.50	
<b>39.00</b>	7.19	8.31	9.33	10.21	10.92	11.54	11.88	<b>12.10</b>	
39.00	7.19	8.31	9.33	10.21	10.92	11.54	11.88		
40.00	6.94	8.03	9.02	9.88	10.57	11.18	11.51		
41.00	6.71	7.76	8.73	9.57	10.24	10.83	11.16		
42.00	6.48	7.51	8.46	9.28	9.93	10.51	10.82		
43.00	6.26	7.27	8.19	8.99	9.63	10.20	10.50		
<b>44.00</b>	6.06	7.04	7.94	8.72	9.35	9.90	<b>10.20</b>		
44.00	6.06	7.04	7.94	8.72	9.35	9.90			
45.00	5.86	6.82	7.71	8.47	9.08	9.62			
46.00	5.67	6.62	7.48	8.22	8.82	9.35			
47.00	5.49	6.42	7.26	7.99	8.57	9.09			
48.00	5.32	6.22	7.05	7.76	8.34	8.84			
<b>49.00</b>	5.16	6.04	6.85	7.55	8.11	<b>8.60</b>			
49.00	5.16	6.04	6.85	7.55	8.11				
50.00	5.00	5.86	6.66	7.34	7.89				
51.00	4.85	5.70	6.47	7.14	7.68				
52.00	4.70	5.53	6.29	6.95	7.48				
53.00	4.56	5.38	6.12	6.77	7.29				
<b>54.00</b>	4.43	5.23	5.96	6.59	<b>7.10</b>				
54.00	4.43	5.23	5.96	6.59					
55.00	4.30	5.08	5.80	6.42					
56.00	4.17	4.94	5.65	6.26					
57.00	4.05	4.81	5.50	6.10					
58.00	3.93	4.68	5.36	5.95					
<b>59.00</b>	3.82	4.55	5.22	<b>5.80</b>					
59.00	3.82	4.55	5.22						
60.00	3.71	4.43	5.09						
61.00	3.61	4.31	4.96						
62.00	3.50	4.20	4.84						
63.00	3.41	4.09	4.72						
<b>64.00</b>	3.31	3.98	<b>4.60</b>						
64.00	3.31	3.98							
65.00	3.22	3.88							
66.00	3.13	3.78							
67.00	3.04	3.68							
68.00	2.96	3.59							
<b>69.00</b>	2.88	<b>3.50</b>							
69.00	2.88								
70.00	2.80								
71.00	2.72								
72.00	2.64								
73.00	2.57								
<b>74.00</b>	<b>2.50</b>								

"A"	5505	7705	10130	12775	15635	18940	22465	26
-----	------	------	-------	-------	-------	-------	-------	----

**TECHNICAL DATA** **4**

<b>FU 8-200/4</b>		<b>0 to 265 fpm / 0 to 80 m/min</b>				<b>1 x 14.2 HP / 1 x 10.5 kW</b>	
<b>SR 10-190/3</b>		<b>0 to 100 fpm / 0 to 30m/min</b>				<b>4 x 11.9 HP / 4 x 8.8 kW</b>	
<b>K WB 120/4</b>		<b>0 to 1 rpm</b>				<b>L1 to L5 Jibs</b>	<b>2 x 11.0 HP / 2 x 8.2 kW</b>
						<b>L6 to L9 Jibs</b>	<b>3 x 11.0 HP / 3 x 8.2 kW</b>
<b>STANDARD HOIST UNIT</b> SR WB 76-100/4F (108 HP)						Maximun hook heights ft./ m	
		<b>fpm</b> m/min	<b>lbs.</b> kg	<b>fpm</b> m/min	<b>lbs.</b> kg		
		<b>440</b> 134	<b>5500</b> 2500	<b>220</b> 67	<b>11000</b> 5000	<b>820 ft</b> (5 Layers) 250 m	<b>410 ft</b> (5 Layers) 125 m
		<b>275</b> 84	<b>9300</b> 4200	<b>138</b> 42	<b>18600</b> 8400	Total motor output approx. 195 HP Without SR 10-190/3 approx. 148 HP Connected Power 205 kVA	
		<b>177</b> 54	<b>14700</b> 7100	<b>89</b> 27	<b>29400</b> 14200		
		<b>110</b> 34	<b>22000</b> 10000	<b>55</b> 17	<b>44000</b> 20000		

Recommended dedicated service: 440 - 480 VAC 3-Phase 250 amp service. Measured under nominal load at the turntable of the tower crane. Speeds and power calculated using 480VAC @ 60 Hertz.

<b>OPTIONAL HOIST UNIT</b> SR WB 122-125/4F (167 HP)						Maximun hook heights ft./ m	
		<b>fpm</b> m/min	<b>lbs.</b> kg	<b>fpm</b> m/min	<b>lbs.</b> kg		
		<b>440</b> 134	<b>7700</b> 3500	<b>220</b> 67	<b>15400</b> 7000	<b>984 ft</b> (6 Layers) 300 m	<b>492 ft</b> (6 Layers) 150 m
		<b>275</b> 84	<b>13200</b> 6000	<b>138</b> 42	<b>26400</b> 12000	Total motor output approx. 260 HP Without SR 10-190/3 approx. 212 HP Connected Power 290 kVA	
		<b>177</b> 54	<b>22000</b> 10000	<b>89</b> 27	<b>44000</b> 20000		
		<b>110</b> 34	<b>27600</b> 12500	<b>55</b> 17	<b>55200</b> 25000		

Recommended dedicated service: 440 - 480 VAC 3-Phase 300 amp service. Measured under nominal load at the turntable of the tower crane. Speeds and power calculated using 480VAC @ 60 Hertz.

**COUNTERWEIGHT (BG) FOR SR WB 76-100/4F OR SR WB 122-125/4F**

JIB LENGTH	L1	L2	L3	L4	L5	L6	L7	L8	L9
<b>Lbs.</b>	<b>41010</b>	<b>41010</b>	<b>47845</b>	<b>47845</b>	<b>47845</b>	<b>54680</b>	<b>54680</b>	<b>54680</b>	<b>54680</b>
metric tons	18.6	18.6	21.7	21.7	21.7	24.8	24.8	24.8	24.8
<b>Lbs.</b>	<b>6x6835</b>	<b>6x6835</b>	<b>7x6835</b>	<b>7x6835</b>	<b>7x6835</b>	<b>8x6835</b>	<b>8x6835</b>	<b>8x6835</b>	<b>8x6835</b>
metric tons	6x3.1	6x3.1	7x3.1	7x3.1	7x3.1	8x3.1	8x3.1	8x3.1	8x3.1

NOTE: Information contained in this specification sheet is of a general nature and Operators Manual should be consulted and adhered to.

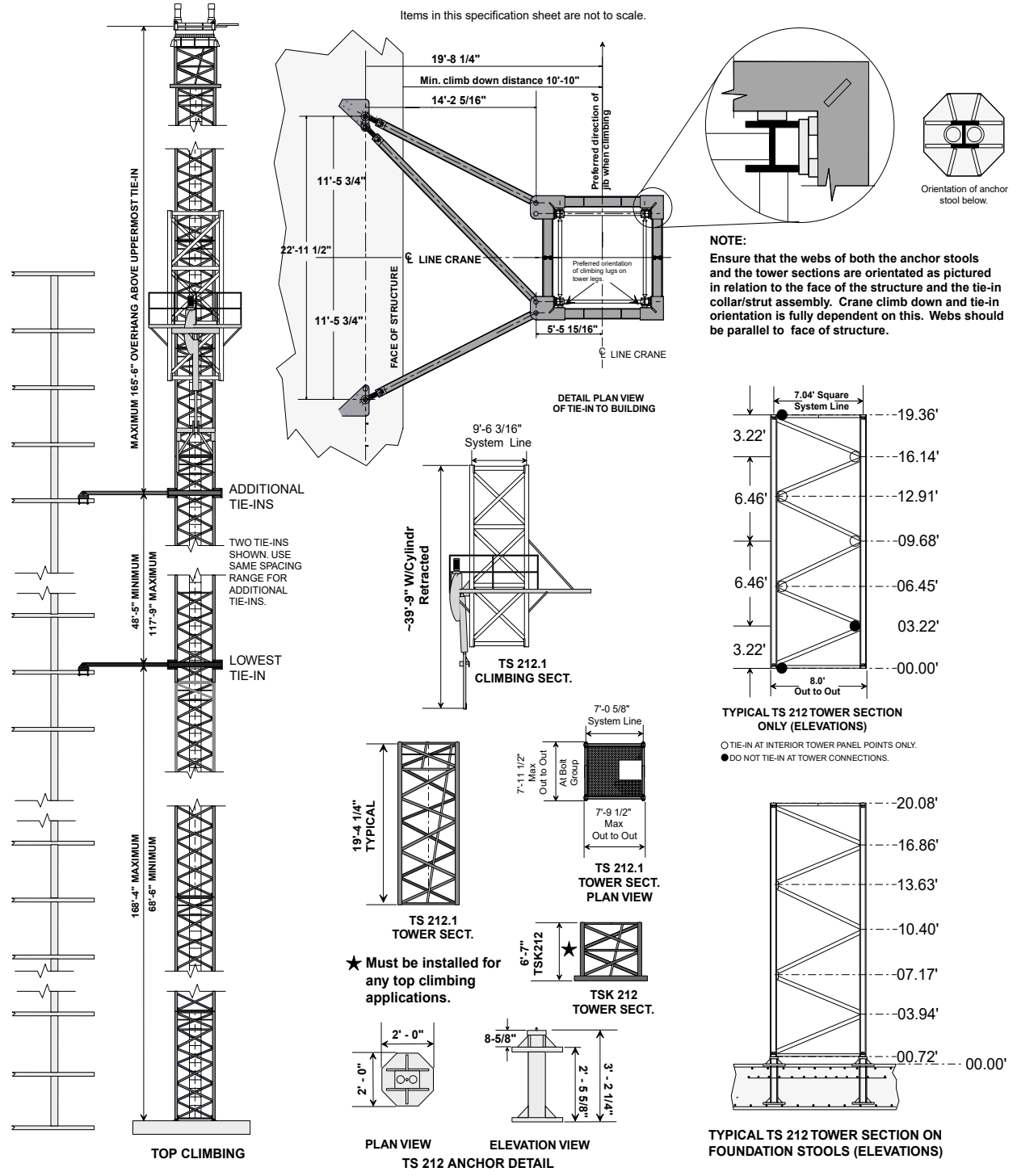
## WEIGHTS AND MEASURES\* 5

Description	Illustration	Dimensions ft. / m.			Weight lbs. / tons (metric)	Assembled Components Information Length and weight in <b>pounds</b> and metric tons*
		L.	W.	H.		
TS 212 and 212.1 Anchor Stools		3'-2" .965m	2'-0" .609m	2'-0" .609m	850lbs. .385t	
TS 213 and 213.1 Anchor Stools		5'-5" 1.65m	2'-2" .66m	2'-2" .66	1100lbs. .499t	
U821 Base Cross for TS212 & 212.1 Tower		34'-7" 10.54m	9'-1" 2.76m	2'-9" .838m	17,100lbs. 7.76t	
TSV 212.1 Tower Section for U821 cross		31'-2" 9.50m	9'-10" 3.00m	10'-0" 3.05m	20,500lbs. 9.30t	
TS 213 and 213.1 Tower Section		19'-6" 5.94m	8'-0" 2.44m	8'-0" 2.44m	9,950lbs. 4.52t	
TS 213 to TS212 Tower Transition Section		19'-6" 5.94	8'-0" 2.44m	8'-0" 2.44m	9,750lbs. 4.42t	
TS 212 and 212.1 Tower Section		19'-6" 5.94m	8'-0" 2.44m	8'-0" 2.44m	9,300lbs. 4.22t	
TSK 212 Tower Section		8'-0" 2.44m	9'-10" 3.00m	6'-8" 2.03m	6,175lbs. 2.80t	
TSK 212 Tie-in Collar		12'-2" 3.70m	10'-2" 3.10m	1'-7" 0.48m	3,200lbs. 1.45t	
TS 212 Top Climbing Section (w / items inside)		29'-3" 8.92m	11'-6" 3.50m	11'-6" 3.50m	25,000lbs. 11.34t	
TS 213/212 Top Climbing Section (w / items inside)		29'-3" 8.92m	11'-6" 3.50m	11'-6" 3.50m	25,850lbs. 11.36t	
Turntable only w / 3 swing motors		11'-4" 3.45m	7'-8" 2.34m	6'-7" 2.01m	23,850lbs. 10.80t	
Turntable Top portion only w / 3 swing motors		11'-4" 3.45m	7'-8" 2.34m	4'-9" 1.45m	9,350lbs. 4.25t	
Turntable Race Bearing only		7'-2" 2.19m	7'-2" 2.19m	0'-6" 0.15m	3,250lbs. 1.40t	
Turntable Lower portion only DA 212		9'-10" 3.00m	7'-8" 2.34m	1'-8" 0.50m	11,250lbs. 5.10t	
Operatos Cabin, Catwalk and Electric panel		8'-2" 2.50m	6'-9" 2.06m	8'-6" 2.60m	3,750lbs. 1.73t	
Turntable Complete w/cabin and 3 swing motors		17'-2" 5.23m	14'-2" 4.32m	12'-4" 3.75m	27,600lbs. 12.52t	
Towertop w / catwalk and ladder		27'-1" 8.26m	6'-5" 2.00m	6'-6" 2.00m	9,600lbs. 4.36t	
108 HP Machinery Deck w/o wire rope		9'-2" 2.80m	8'-5" 2.57m	5'-7" 1.70m	7,500lbs. 3.40t	
108 HP Machinery Deck w/ Rear portion of Counterjib		38'-1" 11.61	9'-2" 2.80m	6'-7" 2.01m	17,500lbs. 7.94t	
Front portion of Counterjib		31'-10" 9.70	6'-8" 2.03m	5'-7" 1.70m	6,610lbs. 2.30t	
108 HP Counterjib complete less wire rope		69'-11" 21.31	9'-2" 2.80m	6'-7" 2.01m	26,500lbs. 12.02t	
Jib Section No. 1 w / Trolley machinery		38'-11" 11.86	6'-6" 2.00m	7'-3" 2.20m	6,650lbs. 3.01t	
Jib Section No. 2		40'-6" 12.34	6'-6" 2.00m	7'-3" 2.20m	5,175lbs. 2.35t	
Outer Jib Support "A" Frame		21'-7" 6.58	5'-5" 1.65m	4'-8" 1.42m	650lbs. 0.30t	
Jib Section No. 3		38'-10" 11.84	6'-6" 2.00m	7'-7" 2.31m	4,750lbs. 2.16t	
Jib Section No. 4		18'-8" 5.69	6'-6" 2.00m	6'-3" 1.91m	2,000lbs. 0.91t	
Jib Section No. 5		35'-0" 10.67	6'-6" 2.00m	6'-11" 2.10m	4,000lbs. 1.82t	
Jib Section No. 6		35'-5" 10.80	6'-6" 2.00m	6'-4" 1.93m	3,000lbs. 1.36t	
Jib Section No. 7		33'-6" 10.21	6'-6" 2.00m	6'-3" 1.91m	2,150lbs. 0.98t	
Jib Section No. 8		17'-1" 5.69	6'-6" 2.00m	6'-2" 1.88m	1,750lbs. 0.80t	
Jib Tip Section		4'-6" 1.37	6'-8" 2.03m	4'-6" 1.37	850lbs. 0.39t	
Single (outer) Trolley for 2-Part Line		7'-4" 2.24m	5'-9" 1.73m	6'-0" 1.83m	1,750lbs. 0.80t	
Single Load Block for 2-Part Line		2'-9" 0.84	1'-0" 0.31m	4'-6" 1.37m	1,200lbs. 0.54t	
Double Trolley for 4-Part Line		14'-8" 4.47m	5'-9" 1.73m	6'-0" 1.83m	3,400lbs. 1.55t	
Dual Load Block for 4-Part Line		5'-6" 1.68	1'-0" 0.31m	4'-6" 1.37m	2,400lbs. 1.09t	
BG Counterweight		14'-8" 4.47m	0'-6" 0.15m	5'-1" 1.55m	6,800lbs. 3.09t	

\*Any printed weights should be confirmed in the field and adjustments made to lifting equipment if required. Do not scale any information within this specification sheet.

\*The operators manual should be used for for crane assembly/disassembly. Sizes and weights shown herein are for general illustration and are approximate in scope.

## USEFUL ERECTION INFORMATION



We reserve the right to amend these specifications at any time without notice. The only warranty applicable is our standard written warranty applicable to the particular product and sale. We make no other warranty, expressed or implied.

For more information, product demonstration, or details on lease and rental plans, please contact your local Terex Towers Distributor.

### Bigge Crane and Rigging Co.

10700 Bigge Avenue  
San Leandro, CA 94577  
Phone: (888) 337-BIGGE or (510) 638-8100  
Fax: (510) 639-4053  
Email: towers@bigge.com  
Web site: www.biggetowercrane.com

### TEREX TOWERS

202 Raleigh Street  
Wilmington, NC 28412 USA  
(910) 395-8500 • FAX: (910) 395-8547  
E-mail: wilmington@terexlifting.com

[www.terexlift.com](http://www.terexlift.com)