

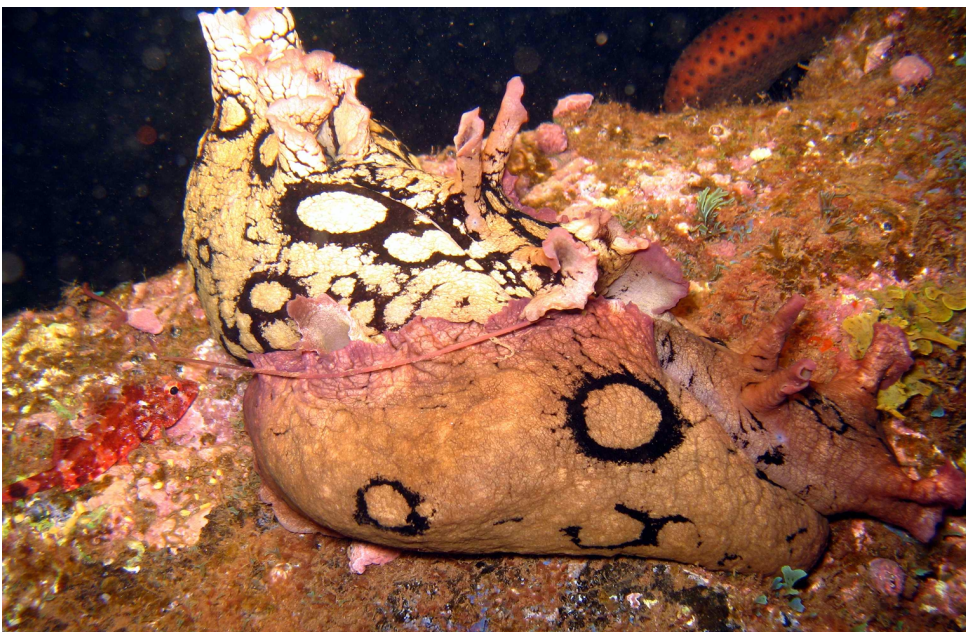
23/09/2020

**A pictorial catalogue of the Aplysiidae, Dolabriferidae, and Notarchidae (Mollusca Heterobranchia) of Madeira Island.**

Peter Wirtz ([peterwirtz2004@yahoo.com](mailto:peterwirtz2004@yahoo.com))

**Family Aplysiidae**

1) *Aplysia dactylomela* Rang, 1828

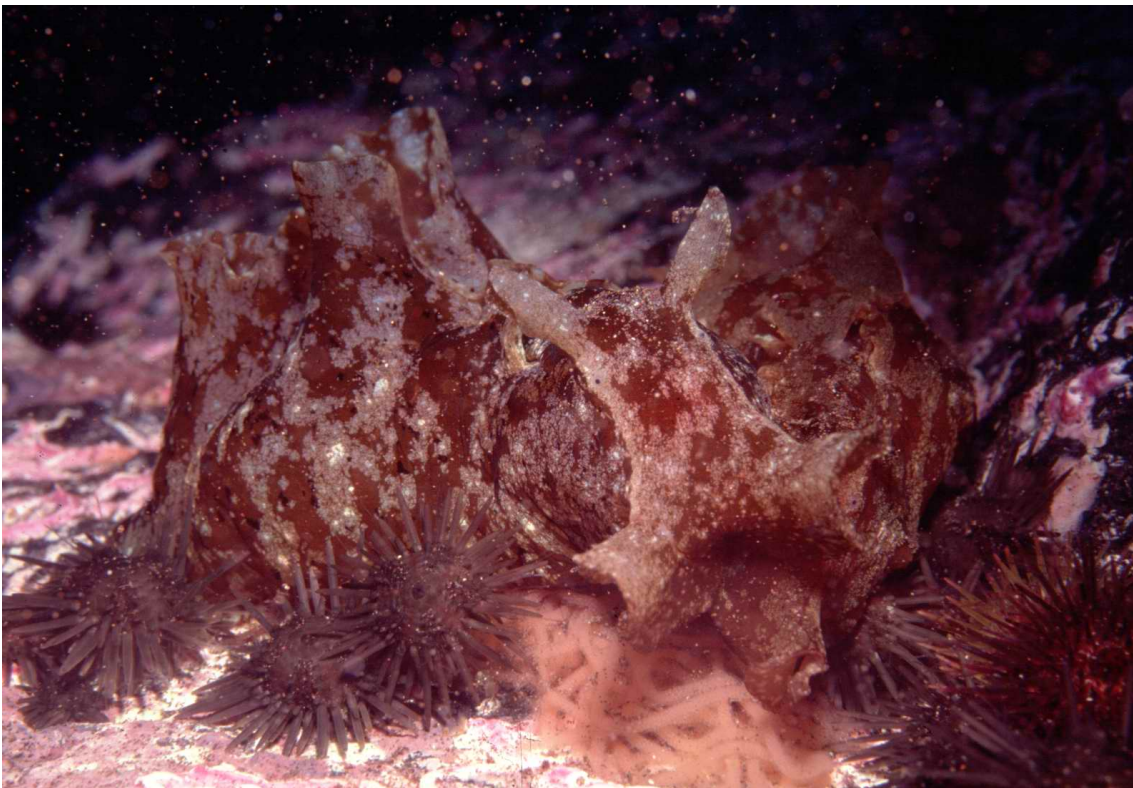


Two different colour morphs mating.



Two different colour morphs mating.

2) *Aplysia depilans* Gmelin, 1791





3) *Aplysia fasciata* Poiret, 1789





4) *Aplysia parvula* Guilding in Mørch, 1863





5) *Aplysia punctata* (Cuvier, 1803)

No picture of living animal from Madeira Island available.



Photo by Leopoldo Moro, Canary Islands.

**Family Dolabriferidae**

6) *Dolabrifera edmundsi* Valdés et al., 2017



Two different colour morphs mating. Note spawn in background.



7) *Petalifera petalifera* (Rang, 1828)



Called *Phyllaplysia lafonti* in Segers et al. (2009).

**Family Notarchidae**

8) *Stylocheilus citrinus* (Rang, 1828)



Called *Stylocheilus longicauda* in Segers et al. (2009).

9) *Stylocheilus striatus* (Quoy & Gaimard, 1832)







I am grateful to Leopoldo Moro for helpful comments and the photo of *Aplysia punctata*.

Main reference:

W. Segers, F. Swinnen, R. De Prins (2009) Marine molluscs of Madeira. Snoeck Publishers, 612 pp.