

# Ecophysiological properties of a cluster root-forming plant, *Helicia cochinchinensis* (Proteaceae) grown on Miyajima Island, Japan

Jun Wasaki (✉ [junw@hiroshima-u.ac.jp](mailto:junw@hiroshima-u.ac.jp))

Hiroshima University <https://orcid.org/0000-0002-8344-607X>

Tadashi Okamura

Hiroshima University

Taiki Yamauchi

Hiroshima University

Hayato Maruyama

Hiroshima University

Shinji Uchida

Hiroshima University

Seiji Mukai

Hiroshima University

Hiromi Tsubota

Hiroshima University

---

## Research Article

**Keywords:** *Helicia cochinchinensis*, Phosphorus, Cluster roots, Proteaceae, P-remobilization efficiency

**Posted Date:** January 12th, 2022

**DOI:** <https://doi.org/10.21203/rs.3.rs-1219032/v1>

**License:**   This work is licensed under a Creative Commons Attribution 4.0 International License.

[Read Full License](#)

---

# Abstract

**Aims** The family Proteaceae is one of the dominant families in nutrient-impooverished habitats in the Southern hemisphere, and less common in the Northern hemisphere. *Helicia cochinchinensis* Lour. is the only Proteaceae species in Japan. This study aimed to unveil the ecophysiological properties of *H. cochinchinensis* grown on Miyajima Island, Hiroshima, Japan.

**Methods** Phosphorus (P) status and dynamics of soils in *H. cochinchinensis* habitats were measured. Plant P and nitrogen (N) concentrations of leaves were measured after digestion. Roots and rhizosheath soil were collected to assess root morphology and root exudates.

**Results** Available P (Olsen-P) in soils in habitats of *H. cochinchinensis* was 0.46–3.7 mg P kg<sup>-1</sup> soil. Citrate was the major carboxylate in root exudates and its concentration increased during cluster-root formation. Acid phosphatase activity was greater at the surface of cluster roots than on the surface of other roots and bulk soil, especially for mature cluster roots. Sparingly soluble organic P concentrations decreased in the rhizosheath soil of mature cluster roots. The P concentrations of *H. cochinchinensis* leaves were relatively low; 0.34–0.69 mg P g<sup>-1</sup> DW and 0.15–0.29 mg P g<sup>-1</sup> DW in mature and senesced leaves, respectively. The P demand of *H. cochinchinensis* was less than that of nearby trees, showing greater P-remobilization efficiency.

**Conclusions** Phosphorus mobilization from unavailable P by cluster roots supported P uptake by *H. cochinchinensis*, and P remobilization from senescing leaves contributed to sustain growth under P-deficient conditions.

## Introduction

The Proteaceae family comprises woody dicots that are distributed mainly in Australia and South Africa, which were part of Gondwana (Lambers et al. 2012a). Southwestern Australian native Proteaceae such as species in the genera *Banksia*, *Grevillea*, and *Hakea* are adapted to extremely nutrient-impooverishment soils that are especially low in phosphorus (P) (Lambers et al. 2011). The formation of a bottle-brush like root architecture, so-called 'cluster roots', is a strategy to adapt to P-deficiency (Neumann and Martinoia 2002). Cluster roots consist of very dense rootlets that are several millimeters long, produce a high density of root hairs on every rootlet, and release carboxylates in an exudative burst (Shane and Lambers 2005). Consequently, cluster roots can mobilize and take up P from the rhizosphere. Both morphological and physiological alterations in the cluster roots are important for P uptake. Exudative bursts such as of carboxylates and phosphatases are strategies to mobilize unavailable P, such as sparingly soluble inorganic P and organic P, in soils (Neumann and Martinoia 2002; Wasaki et al. 2003).

Phosphorus remobilization from senescing leaves is a well-known strategy for growth under P-deficient conditions. Some Proteaceae plants remobilize P from senescing leaves highly efficiently (Denton et al. 2007). Although global average values of the P-remobilizing efficiency (PRE) are about 50% (Lambers

and Oliveira 2019), *Banksia* and *Hakea* species show a much greater PRE: greater than 80% (Denton et al. 2007; de Campos et al. 2013).

Replacement of phospholipids with galactolipids and sulfolipids during leaf development has been found in three *Banksia* and three *Hakea* species as an efficient P utilization strategy (Lambers et al. 2012b). Furthermore, P re-use from rRNA in same leaves during development has been shown in three *Banksia* and three *Hakea* species (Sulpice et al. 2014). The authors suggested that these properties contribute to the extremely high photosynthetic phosphorus-use efficiency of Proteaceae species.

A Southern South American Proteaceae in the genus *Embothrium*, naturally growing in young soils with high content of total P but low P availability, shows higher leaf P concentration and lower P-remobilization efficiency than southwestern Australian Proteaceae species (Hayes et al. 2021). It has been suggested that cluster roots of *Embothrium* play a major role in the uptake of nitrogen (N) rather than P (Fajardo and Piper 2015; Piper et al. 2013). In Asia, about 90 species belonging to the genus *Helicia* are distributed in Japan, China, India, Sri Lanka, Southeast Asia, and Pacific Islands (Jiang et al. 2011), but we have very little knowledge on their nutritional ecology. Among the family Proteaceae, only *Helicia cochinchinensis* Lour. occurs in Japan (Morimura et al. 2006). Miyajima Island, a natural habitat of *H. cochinchinensis*, has generally nutrient-poor soils, especially low in P, and we have found that *H. cochinchinensis* produces simple-type cluster roots (Yamauchi et al. 2015). Therefore, *H. cochinchinensis* might have some adaptive properties associated with growth in low-P soils similar to southwestern Australian and South African Proteaceae.

This study aimed to unveil the ecophysiological properties involved in soil P mobilization by their roots and the P-remobilization efficiency of *Helicia cochinchinensis* growing in a natural habitat on Miyajima Island, Japan.

## Materials And Methods

### Study Sites and Sampling

The sampling site of *Helicia cochinchinensis* was Miyajima Island (Fig. 1), which has a warm and wet climate (34°17'N, 132°17'E, 20 m above sea level, annual precipitation 1,644 mm, annual average temperature 15.8°C). Two planted sites in the Miyajima Natural Botanical Garden (sites A and B), which is near natural habitats on the island, and three natural habitats on Miyajima Island (sites C, D, and E) were selected as study sites. Bulk soils near *H. cochinchinensis* plants at sites A–E were sampled and air-dried for analyses. The rhizosheath soil of *H. cochinchinensis* was sampled: cluster roots were collected from mature trees and gently shaken to remove non-rhizosheath soils adhered to the roots. The roots containing rhizosheath soil were transferred to 50 mL polypropylene tubes and shaken thoroughly. The roots were then removed from tubes and washed well with deionized water and used immediately for physiological analyses. Some roots were stored for DNA barcoding at -20°C until analysis. The rhizosheath soil was also air-dried.

Mature leaves of *H. cochinchinensis* and nearby trees were collected for elemental analysis. Senescing and dead leaves were also sampled from parts of trees. Fully expanded, yellowing, defoliated leaves were defined, respectively, as mature, senescing, and dead leaves. Leaves used for element analyses were oven-dried for three days at 70°C.

## Soil Analysis

All soil samples were sieved with a 2-mm sieve to remove large particles and roots. The samples were later used for analysis. Soil pH was determined in a water suspension (soil water ratio of 1:2.5) after shaking for one hour.

Total P of soils was determined using the vanadomolybdate blue method (Murphy and Riley 1962) after digestion of the sample with  $\text{H}_2\text{SO}_4\text{-H}_2\text{O}_2$ . Available P (Olsen P) in the soil was analyzed according to Olsen et al. (1954). Phosphorus fractionation was conducted according to Hedley et al. (1982) with one modification in that a process to analyze soluble P was omitted, because Olsen-P already indicated a similar fraction.

## Sand Culture of *H. cochinchinensis*

*Helicia cochinchinensis* seedlings were collected on Miyajima Island and transferred to a cylindrical pot (190 mm in height and 160 mm in diameter) containing washed river sand. They were cultivated in a greenhouse through one year with continuous supply of a nutrient solution without P every seven days. Well-washed plants were used as -P individuals for observation of root morphology, collection of root exudates, and activity staining of acid phosphatase. After collection of root exudates, all plants were transferred to nutrient solution containing P (320  $\mu\text{M}$ ) and cultured in a greenhouse. After six days of P supply, all plants were used as +P individuals for collection of root exudates and activity measurements of acid phosphatase.

## Analysis of Cluster Roots

For the measurements of carboxylate exudation, exudates of whole roots of sand-cultured plants were collected by soaking in 200 mL of distilled water for 3 h. Citrate and malate concentrations in root exudates were analyzed using an enzymatic method (F-kit, Roche, Basel, Switzerland). Numbers of cluster roots were counted for all analyzed plants.

Secreted and root-surface acid phosphatase activities of cluster roots were analyzed as below. The fresh roots were excised and soaked in distilled water for 1 h to remove leakage from root sections. The roots were transferred to new tubes containing 50 mL of distilled water for 3 h to collect root exudates. An aliquot (0.5 mL) of root exudates was added to 1.5 mL of 0.2 M acetate-NaOH buffer (pH 5.5), and 0.5 mL of substrate solution (10 mM *p*-nitrophenyl phosphate) was subsequently added. After incubation at 30°C for 30 min, the reaction was stopped by adding 2.5 mL of 0.2 M NaOH. To analyze total activity of acid phosphatase, the roots were immersed in a solution contained 30 mL of acetate-NaOH buffer, 10 mL of distilled water, and 10 mL of substrate solution at 30°C for 30 min. The reaction was stopped after removal of the root system from the solution by adding 50 mL of 0.2 M NaOH. Acid phosphatase

activities were measured by spectrophotometry at 420 nm as increase of the *p*-nitrophenol concentration. Acid phosphatase activities on the root-surface were calculated by subtraction of secreted phosphatase activity from total activity.

Activity staining of phosphatase was conducted using 5-bromo-4-chloro-3-indolyl phosphate (BCIP) as a substrate. Washed cluster roots were soaked for 30–180 min in a staining solution containing 50 mM sodium acetate (pH 5.3), 10 mM MgCl<sub>2</sub>, and 0.1 mg mL<sup>-1</sup> BCIP. Blue-stained samples were observed using a stereoscopic microscope.

## **P Fractionation of the Soil**

To collect cluster roots exhibiting rapid exudation ability, the decrease of pH was used as the index. The pH alteration by root exudates was visualized using a pH indicator according to Shane et al. (2006). Briefly, roots collected in the field were directly placed on a 0.75% (w/w) agar gel containing 0.008% (w/v) of bromocresol purple as pH indicator.

For determination of soil P pools, sequential fractionation was conducted using the method described by Hedley et al. (1982) with minor modification. Briefly, 0.5 g of soil was weighed and extracted sequentially by shaking for 16 h with solutions as below. First, 30 mL of 0.5 M NaHCO<sub>3</sub> was used after adjustment to pH 8.5. A second and third extraction used 30 mL 0.1 M NaOH (NaOH-P) and 20 mL 1 M HCl, respectively. Inorganic P (Pi) extracted by NaHCO<sub>3</sub> and NaOH was measured as NaHCO<sub>3</sub>-Pi and NaOH-Pi, respectively. Total P extracted by NaHCO<sub>3</sub>, NaOH and HCl was measured after digestion by autoclaving in 1.8 M H<sub>2</sub>SO<sub>4</sub> with (NH<sub>4</sub>)<sub>2</sub>S<sub>2</sub>O<sub>8</sub>. Organic P (Po) in these fractions was calculated by subtraction the Pi from total P. Total P was determined by the vanadomolybdate blue method, after digestion.

## **Elemental Analyses**

Dried leaves were ground using a mortar and pestle. A sample of approximately 50 mg was digested using H<sub>2</sub>SO<sub>4</sub>-H<sub>2</sub>O<sub>2</sub>. Digested samples were used for analysis of total P and N concentrations, respectively, using the molybdate blue method and the indophenol method (Bolleter et al. 1961). The P-remobilization efficiency (PRE) was calculated as the difference between mature and senesced leaf P concentrations divided by the mature leaf P concentration (Killingbeck 1996).

## **Statistical Analyses**

All cultivations were replicated more than three times. Student's t-test and Tukey's test were used with SPSS version 16J (SPSS Inc., Chicago, IL, USA). Significance was accepted at P<0.01 or P<0.05.

## **Results**

### **Helicia cochinchinensis habitat and the soil P status**

Mature *H. cochinchinensis* plants were about 20 m in height in Miyajima (Fig. 2A), flowering in early August (Fig. 2B). The shape of the seeds is elliptical with 1 cm in length of the longest dimension (Fig. 2C). The morphology of typical 'simple type' cluster roots (Fig. 2D, E, F) was found like in the genus *Hakea* (Shane and Lambers 2005). Cluster roots of *H. cochinchinensis* were found mainly within 10 cm from the soil surface. All individuals formed cluster roots, regardless of the differences of cultivation. Their cluster roots tightly bound soil particles and organic matter. The widths and lengths of clusters reached more than 1 cm and 3 cm, respectively (Fig. 2E, F). The cluster roots were able to find from naturally grown *H. cochinchinensis* in all seasons.

We measured total and Olsen P concentrations of bulk soil sampled at five sites in *H. cochinchinensis* habitats (Table 1). Total and Olsen P in soils in *H. cochinchinensis* habitats were, respectively, 135–329 and 0.46–3.7 mg P kg<sup>-1</sup> soil. Both values were highest at *H. cochinchinensis*-planted site A, although these were less than one-tenth of the values in cropland close to Miyajima Island. The total P concentration in Miyajima was several times higher than the value in southwestern Australia, where Proteaceae plants are predominant. However, the level of Olsen-P in Miyajima was equivalent to or slightly higher than that in southwestern Australia, suggesting that Miyajima is extremely poor in available P. Soil pH was 5.3 or similar at all analyzed sites.

Table 1  
Phosphorus status of soils in *Helicia cochinchinensis* habitats

	Site A	Site B	Site C	Site D	Site E
Total P (mg P kg <sup>-1</sup> )	329	271	201	186	135
Olsen-P (mg P kg <sup>-1</sup> )	2.8	2.1	0.46	0.46	0.20

## Properties of *H. cochinchinensis* cluster roots

Citrate and malate exudation rates were analyzed using sand-cultured *H. cochinchinensis* plants (Table 2). Both citrate and malate exudation in -P plants were significantly greater than those in +P plants, suggesting that these carboxylate exudations were induced by P-starved conditions in *H. cochinchinensis*. The number of cluster roots per plant was positively correlated with both citrate and malate exudation rates (Fig. 4), indicating the contribution of cluster roots to carboxylate exudation.

Table 2

**Phosphorus (P)-mobilizing abilities of *Helicia cochinchinensis* rhizosheaths; statistical analysis for significant correlation is demonstrated with Student's t-test ( $P < 0.05$ )**

Treatment	Organic acid exudation (nmol g <sup>-1</sup> DW h <sup>-1</sup> )		Acid phosphatase (μmol g <sup>-1</sup> DW h <sup>-1</sup> )	
	Citrate	Malate	Root Surface	Secreted
+P	36 ± 16 a	11 ± 3.7 a	551 ± 169 a	2.2 ± 0.7 a
-P	97 ± 23 b	33 ± 9.0 b	1242 ± 264 b	49 ± 6.1 b

Acid phosphatase activities were measured in different compartments. The results show that all activities were significantly higher in -P plants (Table 2). Interestingly, the activity of root-surface phosphatase was higher than that of root-secreted phosphatase. Activity staining of phosphatase was conducted using BCIP as a substrate. Activities were detected at the mature cluster root stage (Fig. 4AB). High intensity of blue-stained phosphatase was also found in the zone with high-density root hairs (Fig. 4C). The pH change around cluster roots of *H. cochinchinensis* grown in soil was also visualized (Fig. 4D). The pH reduction was stronger in the rhizosheath of mature cluster roots than that of senesced cluster roots. The strong pH reduction was the result of faster exudation of carboxylates, because proton release is concomitant with carboxylate release (Neumann and Martinoia 2002; Tomasi et al. 2009; Yan et al. 2002).

To investigate the effects of root exudates from cluster roots on the P dynamics of actual rhizosheath soils, sequential fractionation analysis of P was conducted for the bulk soil and the rhizosheath soils of cluster roots, which showed strong pH reductions. Total P concentration of the rhizosheath soil was mostly half of that of bulk soil, and concentrations of all fractions were lower in the rhizosheath soils (Fig. 5). Surprisingly, a reduction of the NaOH-P<sub>o</sub> fraction in rhizosheath soil was common. This suggests that insoluble organic P was the major form of P mobilized by the cluster roots.

## Nutrient status of *H. cochinchinensis* and nearby trees in Miyajima Island

Phosphorus concentrations of mature and old leaves of *H. cochinchinensis* trees at five sites were analyzed (Table 3). Both mature and old leaves exhibited low values: 0.344-0.595 mg g<sup>-1</sup> DW and 0.147-0.282 mg g<sup>-1</sup> DW, respectively. Phosphorus-remobilization efficiency (PRE) of *H. cochinchinensis* was greater than 50% in all individuals (Table 3), markedly higher than that of other nearby trees (45.8% in *Camellia japonica*, 30.2% in *Diospyros morrisiana*, and 7.9% in *Morella rubra*), except for *Michelia compressa* (67.6%). Thus suggests that *H. cochinchinensis* had a high capacity to remobilize P from senescing leaves.

Table 3  
Phosphorus (P) concentration and P-remobilizing efficiency (PRE) of *Helicia cochinchinensis* leaves (mg P g<sup>-1</sup> DW)

	Site A	Site B	Site C	Site D	Site E
Mature Leaves	0.595 ± 0.079	0.591 ± 0.072	0.344 ± 0.032	0.399 ± 0.036	0.475 ± 0.019
Old Leaves	0.282 ± 0.030	0.259 ± 0.005	0.147 ± 0.009	0.184 ± 0.015	0.192 ± 0.005
PRE (%)	52.6	56.1	57.3	53.9	59.6

The P concentrations of mature leaves of native trees were compared at the family level (Fig. 6). The trees frequently found in Miyajima Island were selected as follows: Anacardiaceae (*Toxicodendron trichocarpum* and *Rhus javanica*; n=3), Apocynaceae (*Anodendron affine*, *Nerium oleander*, and *Trachelospermum asiaticum*; n=3), Daphniphyllaceae (*Daphniphyllum teijsmannii*; n=5), Ebenaceae (*Diospyros morrisiana*; n=3), Ericaceae (*Lyonia ovalifolia*, *Pieris japonica*, *Rhododendron kaempferi*, *R. reticulatum*, and *Vaccinium bracteatum*; n=5), Fagaceae (*Lithocarpus glabra*, *Quercus glauca*, and *Q. phillyraeoides*; n=5), Lauraceae (*Cinnamomum camphora*, *C. tenuifolium*, *Neolisteia aciculata*, *N. sericea*, and *Litsea coreana*; n=6), Magnoliaceae (*Michelia compressa*; n=4), Myricaceae (*Morella rubra*; n=3), Proteaceae (*H. cochinchinensis*; n=20), Rosaceae (*Cerasus jamasakura*, *Photinia glabra*, and *Rubus sieboldii*; n=4), Symplocaceae (*Symplocos prunifolia* and *S. theophrastaefolia*; n=4), and Theaceae (*Camellia japonica*; n=3). The P concentration was highest in Anacardiaceae and lowest in Myricaceae. The Proteaceae, which comprised only *H. cochinchinensis*, exhibited very low values: 0.69 mg P g<sup>-1</sup> DW was the highest value and 0.45 mg P g<sup>-1</sup> DW was the median. This value was fourth from the lowest among analyzed plants.

The P and N concentrations of mature, senesced, and dead leaves were compared among *H. cochinchinensis*, *Camellia japonica*, and *Michelia compressa* which showed higher PRE. Both concentrations were low in senesced and dead leaves and high in mature leaves in all plant species (Fig. 7). A linear correlation was found between N and P concentrations in all plants. The slopes for *Camellia* and *Michelia* were similar. *Helicia cochinchinensis* showed a lower slope than other species did (Fig. 7), suggesting that the relative demand of P to N in *H. cochinchinensis* was less than that in other species, even in those planted at the same places.

## Discussion

### Phosphorus mobilization in the rhizosheath of cluster roots

*Helicia cochinchinensis* formed simple cluster roots (Fig. 2), as do most Proteaceae (Shane and Lambers 2005). This morphology has benefits for P uptake via increasing of root surface areas and massive



release of root exudates. Physiological alteration in the cluster roots of *H. cochinchinensis* was similar to that of other Proteaceae from Australia, South Africa and South America (Shane and Lambers 2005).

Cluster roots caused a strong decrease of pH in the rhizosphere (Figs. 4D, 5) and showed massive carboxylate exudation (Fig. 3). Earlier reports have described that the pH decrease and carboxylate exudation contribute to P mobilization in the rhizosphere (Neumann and Martinoia 2002; Weiskopf et al. 2006). The rate of citrate exudation was second only to that of white lupin (ca. 200 nmol g<sup>-1</sup> DW h<sup>-1</sup>; Wang et al. 2007) and was similar to other Proteaceae (ca. 0.8 nmol g<sup>-1</sup> FW s<sup>-1</sup>, *Embothrium coccineum*; Delgado et al. 2014) among previous studies. A strong exudation of carboxylate was consistent with an “exudative burst” found in cluster-root forming plant species (Skene 2003). Roelofs et al. (2001) reported a stronger carboxylate exudation from Proteaceae species in southwestern Australia than in white lupin. We speculate that *H. cochinchinensis* plants exhibit carboxylate exudation abilities from cluster roots as in other Proteaceae.

Phosphatases cleave phosphate ester bonds of a broad range of organic P compounds in soils, and can contribute to the supply of inorganic P. Both secreted and root surface-bound phosphatases mobilize organic P in the rhizosphere (Wasaki et al. 2003). In *H. cochinchinensis*, the phosphatase activities on the root surface were predominant rather than the root secreted phosphatases (Table 2). This is inconsistent with previous studies on hydroponically-cultured crop plants, in which secreted phosphatases showed higher activities than cell wall-bound phosphatases (e.g., Tadano and Sakai 1991). The reason may be the characteristics of the cluster roots. The cluster roots develop dense root hairs on their rootlets to increase the root surface area. Thus the rhizosphere of cluster roots has a larger volume than other roots of the same weight. The stronger activities on root surfaces seems reasonable for cluster root-forming plants, such as Proteaceae. Indeed, mature cluster roots and their root hair cells showed stronger activities of phosphatase by the activity staining of root-surface phosphatases (Fig. 4). The phosphatase activity of the entire root system of *Embothrium coccineum* was less than 150 μmol g<sup>-1</sup> DW h<sup>-1</sup> (Delgado et al. 2013), suggesting that *H. cochinchinensis* had markedly high activities (Table 2). Given the higher organic P content in the soil of *H. cochinchinensis* habitats in Miyajima (Fig. 5), it seems reasonable for the role to mobilize the organic P in the rhizosphere soils.

Effects of P-mobilizing abilities in the rhizosphere of *H. cochinchinensis* on actual soils were estimated by a sequential fractionation. Surprisingly, more than half of total P in bulk soil disappeared in the rhizosphere soils (Fig. 5), suggesting that P-mobilization abilities of the rhizosphere significantly contributed to P acquisition from ‘unavailable’ P in soil. NaOH-P<sub>o</sub>, which was a drastically decreased fraction in the rhizosphere soils, contained phytate-P, the most abundant organic P in soils (Dissanayaka et al. 2015). Phytate-P is the most difficult to utilize for plants among organic P compounds present in soil (Turner 2008). Our preliminary analysis suggested that the soil of *H. cochinchinensis* habitat contains phytate-P (data not shown), contrasting with none of phytate-P in an ancient soil of *Xylomelum occidentale* habitat (Zhong et al. 2021). An ability to mobilize sparingly soluble phytate-P may be advantageous for growth of *H. cochinchinensis*, although further studies are required to show the dynamics of phytate-P in the rhizosphere.

# Phosphorus remobilization from senescing leaves

The critical level of P in crop plants to avoid P deficiency is 2 mg P g<sup>-1</sup> DW (Marschner 2012, Tadano and Sakai 1991). The P concentration of mature leaves of native trees in Miyajima was much lower (Fig. 6, Table 3). The median of P concentration of *H. cochinchinensis* was fourth from the lowest among the plants investigated on Miyajima Island (Fig. 6), and mostly average for Proteaceae (Westoby and Falster 2021). This suggests that many plant species in Miyajima Island including *H. cochinchinensis* can tolerate low-P conditions and function at low leaf P concentrations.

Phosphorus remobilization of Proteaceae in southwestern Australia is extremely important for growth in soil containing very little P (Lambers et al. 2012b, 2015). The P-remobilization efficiency of *H. cochinchinensis* from senesced leaves was greater than 50% for all investigated trees (Table 3). Phosphorus remobilization of *H. cochinchinensis* was greater than that of nearby trees of other families, although the PRE was lower than that of southwestern Australian species.

The Southern South American Proteaceae *Embothrium coccineum* naturally occurs in volcanic soils, which have a high total P concentration but low P availability due to strong P sorption. These plants show only 42% P-remobilization efficiency, although this value is higher than that of nearby trees (Fajardo and Piper 2015). The P-remobilization efficiency of *H. cochinchinensis* was markedly higher than that of *Embothrium coccineum* (de Campos et al. 2013). Higher PRE in Proteaceae than in other families commonly occurs in three different regions (Australia, Chile, and Japan). Mature leaves of wide range of Proteaceae showed low P concentration (Hayes et al. 2021). These facts suggest that efficient P use is important for P nutrition in Proteaceae.

P-N interactions suggest a relatively low P demand in *H. cochinchinensis*. The slope of the correlation for *H. cochinchinensis* tended to be lower than those of the other two trees (Fig. 7), suggesting that P demand of *H. cochinchinensis* was less than that of nearby trees showing high P use efficiency. Wright et al. (2004) reported that mature leaf N:P ratios of southwestern Australian Proteaceae was 24.4, whereas those of tested species on Miyajima Island were lower. Nitrogen concentrations of senesced leaves were lower than those of mature leaves (Fig. 7). Mature leaf N concentrations were higher among Proteaceae (Westoby and Falster 2021). Resorption of N from litter to green leaves was low in southwestern Australian Proteaceae plants (Lambers et al. 2012a). This suggests that both P and N are limiting nutrients for Miyajima trees, although P is the strongest limiting nutrient, as is the case for southwestern Australian species.

## Concluding Remarks

Morphological and physiological properties of cluster roots of *H. cochinchinensis* on Miyajima Island support P uptake from poorly available P sources in the soil like those of other Proteaceae. Actually, P remobilization from senescing leaves and less P demand in leaves may sustain the growth of *H. cochinchinensis* under P-deficient conditions. The ecological and physiological importance of *H.*

*cochinchinensis* can be assessed further by comparison between *H. cochinchinensis* at Miyajima and other Proteaceae grown in climatically and geologically different places.

## Declarations

## Acknowledgments

This research was partly supported by the Ministry of Education, Culture, Sports, Science and Technology (MEXT), Japan through Grants-in-Aid (23688010, 23770089, 17H03783 and 17KK0156). We thank Prof. Hans Lambers for providing constructive comments on draft of this manuscript.

## References

1. Bolleter WT, Bushman CJ, Tidwell PW (1961) Spectrophotometric determination of ammonia as indophenol. *Anal Chem* 33:692–594. <https://doi.org/10.1021/ac60172a034>
2. CBOL Plant Working Group (2009) A DNA barcode for land plants. *Proc Natl Acad Sci USA* 106:12794–12797. <http://doi.org/10.1073/pnas.0905845106>
3. de Campos M, Pearse SJ, Oliveira RS, Lambers H (2013) Down-regulation of net phosphorus-uptake capacity is inversely related to leaf phosphorus-resorption proficiency in four species from a phosphorus-impooverished environment. *Ann Bot* 111:445–454. <https://doi.org/10.1093/aob/mcs299>
4. Delgado M, Zúñiga-Feest A, Alvear M, Borie F (2013) The effect of phosphorus on cluster-root formation and functioning of *Embothrium coccineum* (R. et J. Forst.). *Plant Soil* 373:765–773. <https://doi.org/10.1007/s11104-013-1829-3>
5. Delgado M, Zúñiga-Feest A, Borie F, Suriyagoda L, Lambers H (2014) Divergent functioning of Proteaceae species: the South American *Embothrium coccineum* displays a combination of adaptive traits to survive in high-phosphorus soils. *Funct Ecol* 28:1356–1366. <https://doi.org/10.1111/1365-2435.12303>
6. Denton MD, Veneklaas EJ, Freimoser FM, Lambers H (2007) *Banksia* species (Proteaceae) from severely phosphorus-impooverished soils exhibit extreme efficiency in the use and re-mobilization of phosphorus. *Plant Cell Environ* 30:1557–1565. <https://doi.org/10.1111/j.1365-3040.2007.01733.x>
7. Dinkelaker B, Hengeler C, Marschner H (1995) Distribution and function of proteoid roots and other root clusters. *Bot Acta* 108:183–200. <https://doi.org/10.1111/j.1438-8677.1995.tb00850.x>
8. Dinkelaker B, Römheld V, Marschner H (1989) Citric acid excretion and precipitation of calcium citrate in the rhizosphere of white lupin (*Lupinus albus* L.). *Plant Cell Environ* 12:285–292. <https://doi.org/10.1111/j.1365-3040.1989.tb01942.x>
9. Fajardo A, Piper FI (2015) High foliar nutrient concentrations and resorption efficiency in *Embothrium coccineum* (Proteaceae) in southern Chile. *Am J Bot* 102:208–216. <https://doi.org/10.3732/ajb.1400533>

10. Hayes PE, Nge FJ, Cramer MD, Finnegan PM, Fu P, Hopper SD, Oliveira RO, Turner BL, Zemunik G, Zhong H, Lambers H (2021) Traits related to efficient acquisition and use of phosphorus promote diversification in Proteaceae in old phosphorus-impooverished landscapes. *Plant Soil* 462:67–88. <https://doi.org/10.1007/s11104-021-04886-0>
11. Hedley MJ, Stewart JWB, Chauhan BS (1982) Changes in inorganic and organic soil phosphorus fractions induced by cultivation practices and by laboratory incubations. *Soil Sci Soc Am J* 46:970–976. <https://doi.org/10.2136/sssaj1982.03615995004600050017x>
12. Jiang N, Lin X, Guan K-Y, Yu W-B (2011) Valid publication of the name *Helicia falcata* (Proteaceae). *Nord J Bot* 29:61–62. [10.1111/j.1756-1051.2010.00900.x](https://doi.org/10.1111/j.1756-1051.2010.00900.x)
13. Killingbeck KT (1996) Nutrients in senesced leaves: keys to the search for potential resorption and resorption proficiency. *Ecology* 77:1716–1727. <https://doi.org/10.2307/2265777>
14. Lambers H, Oliveira RS (2019) *Plant physiological ecology*. 3rd edition. Springer, Cham
15. Lambers H, Finnegan PM, Laliberte E, Pearse SJ, Ryan MH, Shane MW, Veneklaas EJ (2011) Phosphorus nutrition of Proteaceae in severely phosphorus-impooverished soils: Are there lessons to be learned for future crops? *Plant Physiol* 156:1058–1066. <https://doi.org/10.1104/pp.111.174318>
16. Lambers H, Bishop JG, Hopper SD, Laliberté E, Zúñiga-Feest A (2012a) Phosphorus- mobilization ecosystem engineering: the roles of cluster roots and carboxylate exudation in young P-limited ecosystems. *Ann Bot* 110:329–348. <https://doi.org/10.1093/aob/mcs130>
17. Lambers H, Cawthray GR, Giavalisco P, Kuo J, Laliberte E, Pearse SJ, Scheible W-R, Stitt M, Teste F, Turner BL (2012b) Proteaceae from severely phosphorus-impooverished soils extensively replace phospholipids with galactolipids and sulfolipids during leaf development to achieve a high photosynthetic phosphorus-use-efficiency. *New Phytol* 196:1098–1108. <https://doi.org/10.1111/j.1469-8137.2012.04285.x>
18. Lambers H, Finnegan PM, Jost R, Plaxton WC, Shane MW, Stitt M (2015) Phosphorus nutrition in Proteaceae and beyond. *Nat Plants* 1:15109. <https://doi.org/10.1038/nplants.2015.109>
19. Marschner H (2012) *Marschner’s mineral nutrition of higher plants*. Third Edition. Academic Press, London
20. Maruyama H, Yamamura T, Kaneko Y, Matsui H, Watanabe T, Shinano T, Osaki M, Wasaki J (2012) Effect of exogenous phosphatase and phytase activities on organic phosphate mobilization in soils with different phosphate adsorption capacities. *Soil Sci Plant Nutr* 58:41–51. <https://doi.org/10.1080/00380768.2012.656298>
21. Morimura K, Gatayama A, Tsukimata R, Matsunami K, Otsuka H, Hirata E, Shinzato T, Aramoto M, Takeda Y (2006) 5-*O*-glucosylidihydroflavones from the leaves of *Helicia cochinchinensis*. *Phytochemistry* 67:2681–2685. <https://doi.org/10.1016/j.phytochem.2006.08.001>
22. Murphy J, Riley JP (1962) A modified single solution method for the determination of phosphate in natural waters. *Anal Chim Acta* 27:31–36
23. Neumann G, Martinoia E (2002) Cluster roots – an underground adaptation for survival in extreme environments. *Trends Plant Sci* 7:162–167. [https://doi.org/10.1016/S1360-1385\(02\)02241-0](https://doi.org/10.1016/S1360-1385(02)02241-0)

24. Olsen SR, Cole CV, Watanabe FS, Dean LA (1954) Estimation of available phosphorus in soils by extraction with sodium bicarbonate. USDA Circular No. 939, Washington DC
25. Piper FI, Baeza G, Zúñiga-Feest A, Fajardo A (2013) Soil nitrogen, and not phosphorus, promotes cluster-root formation in a South American Proteaceae, *Embothrium coccineum*. *Am J Bot* 100:2328–2338. <https://doi.org/10.3732/ajb.1300163>
26. Roelofs RFR, Rengel Z, Cawthray GR, Dixon KW, Lambers H (2001) Exudation of carboxylates in Australian Proteaceae: chemical composition. *Plant Cell Environ* 24:891–903. <https://doi.org/10.1046/j.1365-3040.2001.00741.x>
27. Shane MW, Lambers H (2005) Cluster roots: a curiosity in context. *Plant Soil* 274:101–125. <https://doi.org/10.1007/s11104-004-2725-7>
28. Shane MW, Cawthray GR, Cramer MD, Kuo J, Lambers H (2006) Specialized ‘dauciform’ roots of Cyperaceae are structurally distinct, but functionally analogous with ‘cluster’ roots. *Plant Cell Environ* 29. <https://doi.org/10.1111/j.1365-3040.2006.01574.x>. :1989-1999
29. Skene KR (1998) Cluster roots: some ecological considerations. *J Ecol* 86:1060–1064. <https://doi.org/10.1046/j.1365-2745.1998.00326.x>
30. Sulpice R, Ishihara H, Schlereth A, Cawthray GR, Encke B, Giavalisco P, Ivakov A, Arrivault S, Jost R, Krohn N, Kuo J, Laliberté E, Pearse SJ, Raven JA, Scheible W-R, Teste F, Veneklaas EJ, Stitt M, Lambers H (2014) Low levels of ribosomal RNA partly account for the very high photosynthetic phosphorus-use efficiency of Proteaceae species. *Plant Cell Environ* 37:1276–1298. <https://doi.org/10.1111/pce.12240>
31. Tadano T, Sakai H (1991) Secretion of acid phosphatase by the roots of several crop species under phosphorus-deficient conditions. *Soil Sci Plant Nutr* 37:129–140. <https://doi.org/10.1080/00380768.1991.10415018>
32. Tomasi N, Kretschmar T, Espen L, Weisskopf L, Fuglsang AT, Palmgren MG, Neumann G, Varanini Z, Pinton R, Martinoia E, Cesco S (2009) Plasma membrane H<sup>+</sup>-ATPase dependent citrate exudation from cluster roots of phosphate-deficient white lupin. *Plant Cell Environ* 32:465–475. <https://doi.org/10.1111/j.1365-3040.2009.01938.x>
33. Thompson JD, Higgins DG, Gibson TJ (1994) CLUSTAL W: improving the sensitivity of progressive multiple sequence alignment through sequence weighting, position-specific gap penalties and weight matrix choice. *Nucleic Acids Res* 22:4673–4680. <https://doi.org/10.1093/nar/22.22.4673>
34. Wang BL, Shen JB, Zhang WH, Zhang FS, Neumann G (2007) Citrate exudation from white lupin induced by phosphorus deficiency differs from that induced by aluminum. *New Phytol* 176:581–589. <https://doi.org/10.1111/j.1469-8137.2007.02206.x>
35. Wasaki J, Yamamura T, Shinano T, Osaki M (2003) Secreted acid phosphatase is expressed in cluster roots of lupin in response to phosphorus deficiency. *Plant Soil* 248:129–136. <https://doi.org/10.1023/A:1022332320384>
36. Wasaki J, Rothe A, Kania A, Neumann G, Römheld V, Shinano T, Osaki M, Kandeler E (2005) Root exudation, phosphorus acquisition, and microbial diversity in the rhizosphere of white lupine as

- affected by phosphorus supply and atmospheric carbon dioxide concentration. *J Environ Qual* 34:2157–2166. <https://doi.org/10.2134/jeq2004.0423>
37. Wasaki J, Kojima S, Maruyama H, Haase S, Osaki M, Kandeler E (2008) Localization of acid phosphatase activities in roots of white lupin plants grown under phosphorus-deficient conditions. *Soil Sci Plant Nutr* 54:95–102. <https://doi.org/10.1111/j.1747-0765.2007.00207.x>
38. Weisskopf L, Abou-Mansour E, Fromin N, Tomasi N, Santelia D, Edelkott I, Neumann G, Aragno M, Tabacchi R, Martinoia E (2006) White lupin has developed a complex strategy to limit microbial degradation of secreted citrate required for phosphate acquisition. *Plant Cell Environ* 29:919–927. <https://doi.org/10.1111/j.1365-3040.2005.01473.x>
39. Westby M, Falster DS (2021) The conservative low-phosphorus niche in Proteaceae. *Plant Soil* 462:89–93. <https://doi.org/10.1007/s11104-021-04953-6>
40. Wright IJ, Reich PB, Westoby M, Ackerly DD, Baruch Z, Bongers F, Cavender-Bares J, Chapin T, Cornelissen JHC, Diemer M, Flexas J, Garnier E, Groom PK, Gulias J, Hikosaka K, Lamont BB, Lee T, Lee W, Lusk C, Midgley JJ, Navas M-L, Niinemets Ü, Oleksyn J, Osada N, Poorter H, Poot P, Prior L, Pyankov VI, Roumet C, Thomas SC, Tjoelker MG, Veneklaas EJ, Villar R (2004) The worldwide leaf economics spectrum. *Nature* 428:821–827. <https://doi.org/10.1038/nature02403>
41. Yan F, Zhu Y, Müller C, Zörb C, Schubert S (2002) Adaptation of H<sup>+</sup>-pumping and plasma membrane H<sup>+</sup> ATPase activity in proteoid roots of white lupin under phosphate deficiency. *Plant Physiol* 129:50–63. <https://doi.org/10.1104/pp.010869>
42. Zhong H, Zhou J, Azmi A, Arruda AJ, Doolette AL, Smernik RJ, Lambers H (2021) *Xylomelum occidentale* (Proteaceae) accesses relatively mobile soil organic phosphorus without releasing carboxylates. *J Ecol* 109:246–259. <https://doi.org/10.1111/1365-2745.13468>

## Figures

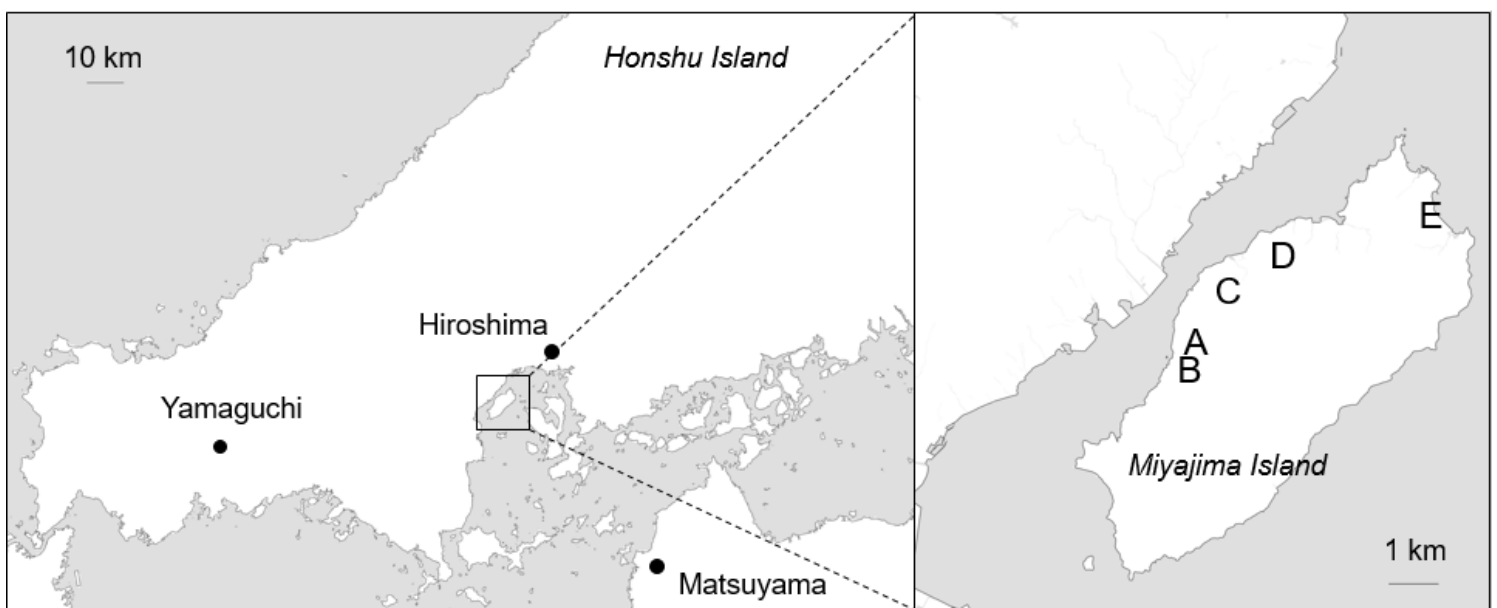


Figure 1

Study Sites. Left: part of western Japan including Miyajima Island. Right: close-up view of Miyajima Island, including study sites A-E. Maps were modified from the electronic data provided by Geographical Survey Institute, Japan.

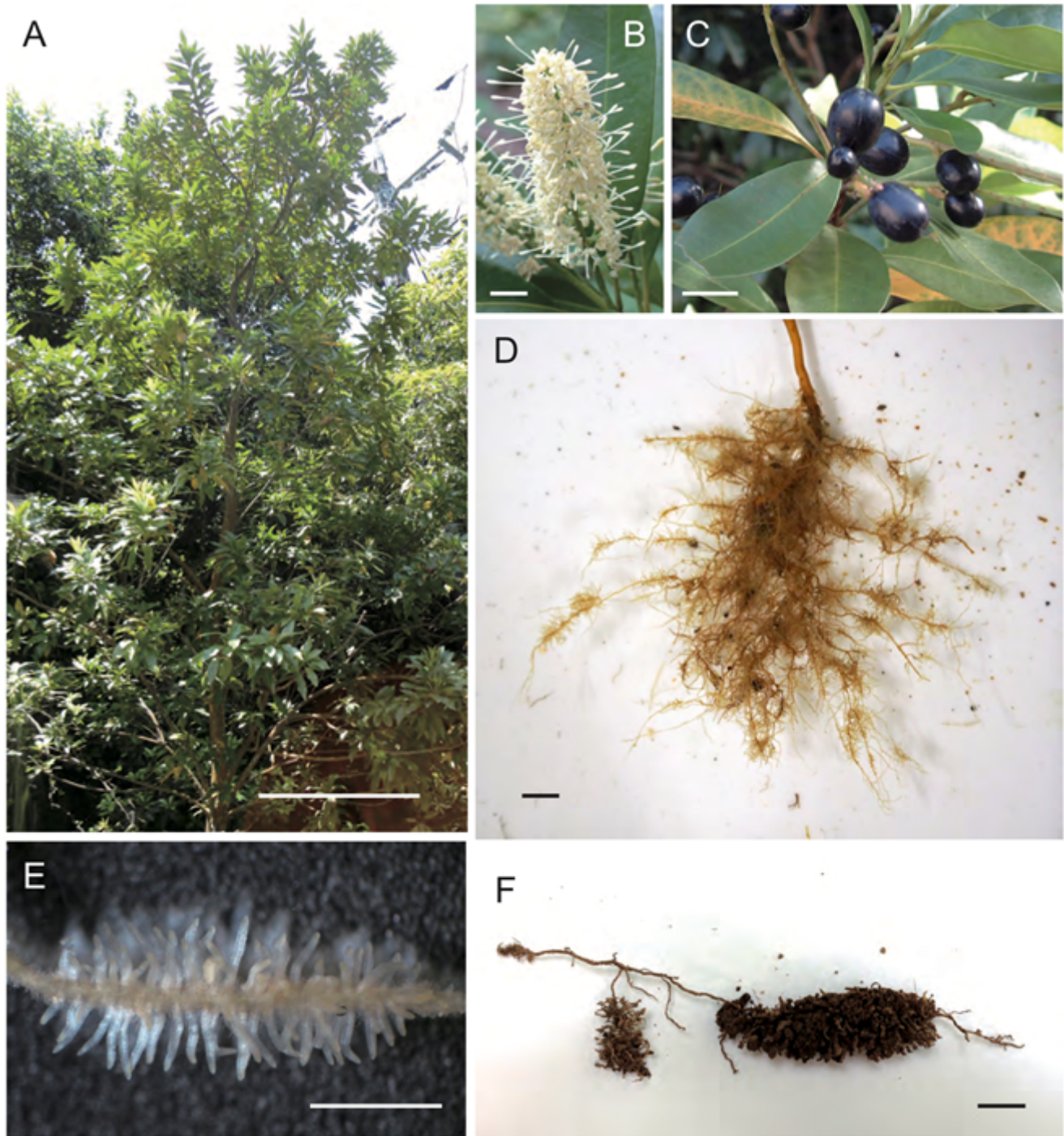


Figure 2

*Helicia cochinchinensis* plants. A, Tree growing on Miyajima Island; B, a flower; C, fruits; D, whole root system of hydroponically cultured plant; E, a cluster root of hydroponically-cultured plant; F, a cluster root

of a tree growing naturally on Miyajima Island. Bars = 1 m (A) or 1 cm (B-F).

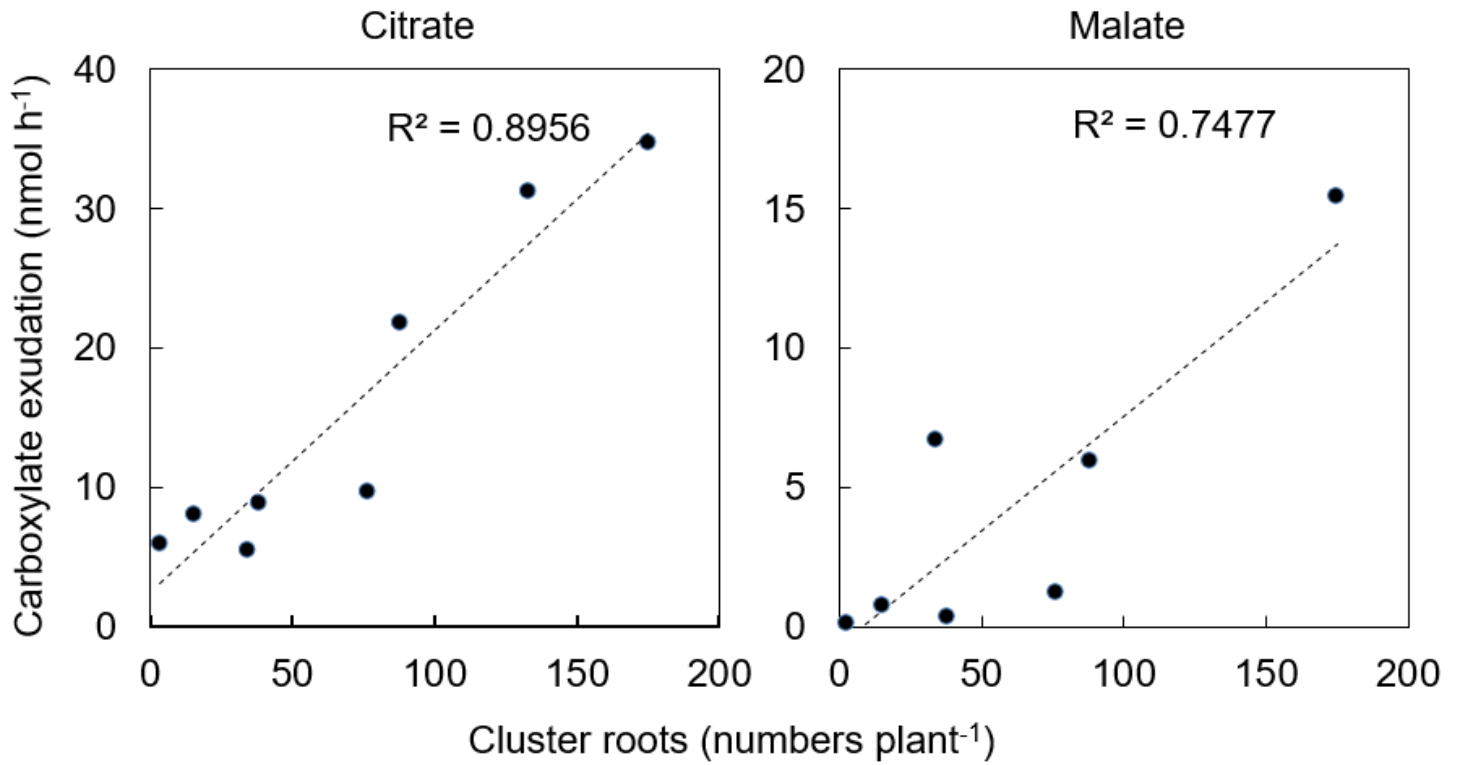


Figure 3

Relationships between cluster-root formation and carboxylate exudation. A, citrate exudation; B, malate exudation.



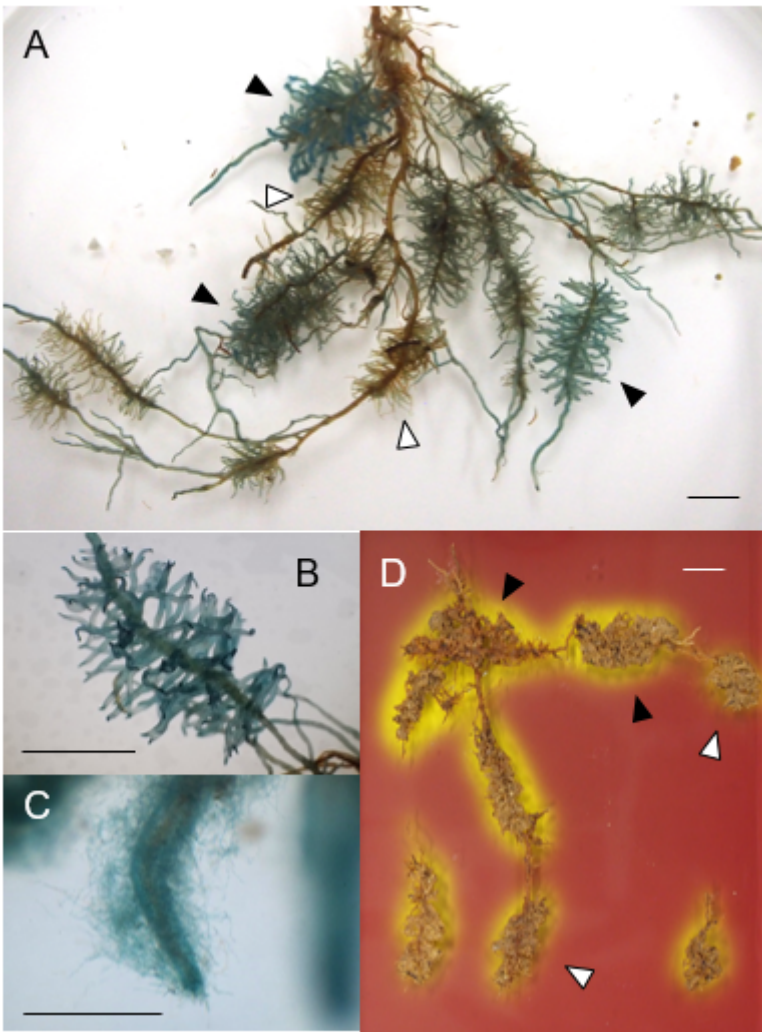


Figure 4

Distribution of acid phosphatase activities in cluster roots of *Helicia cochinchinensis*. A, A cluster root found on a tree growing on Miyajima Island; B, a rootlet; C, whole root system of a sand-cultured *Helicia cochinchinensis*. Bar = 1 mm (A-B) or 1 cm (C).

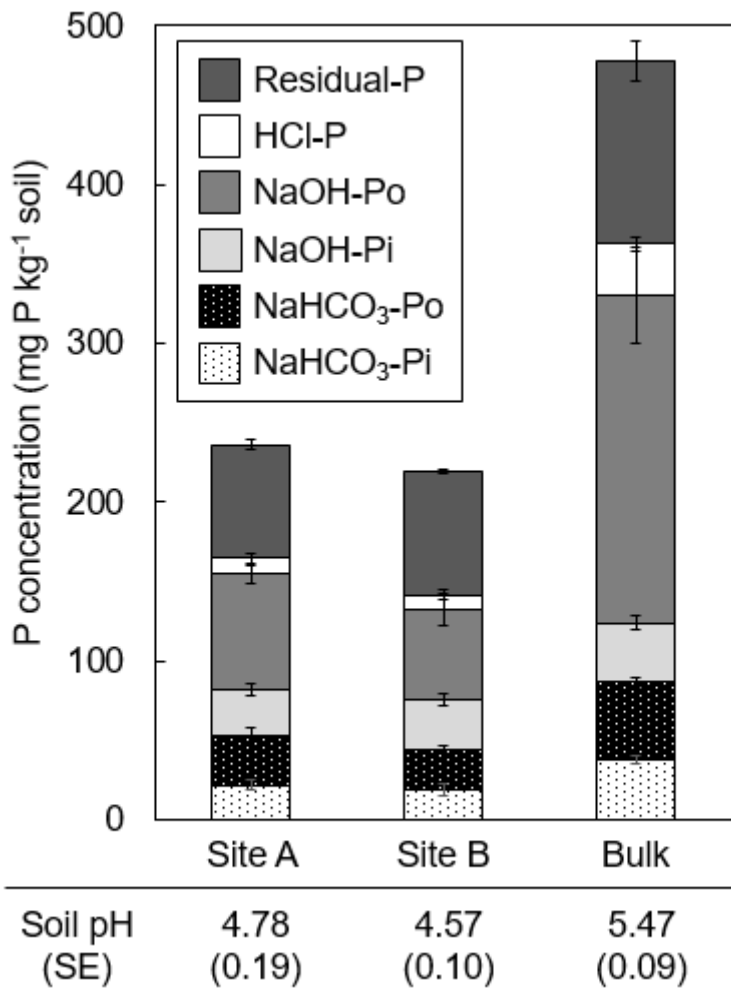


Figure 5

Phosphorus fractionation and pH of rhizosphere soils of cluster roots and bulk soils.

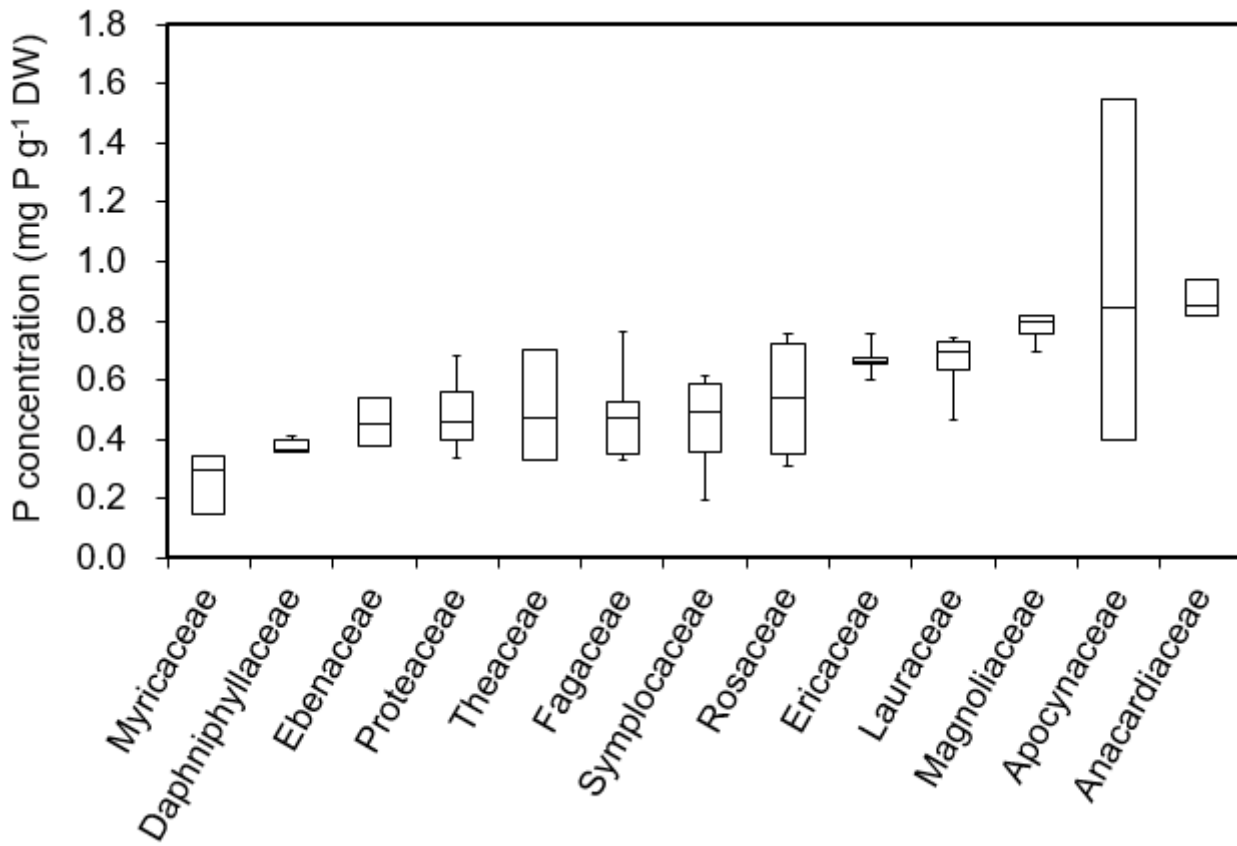
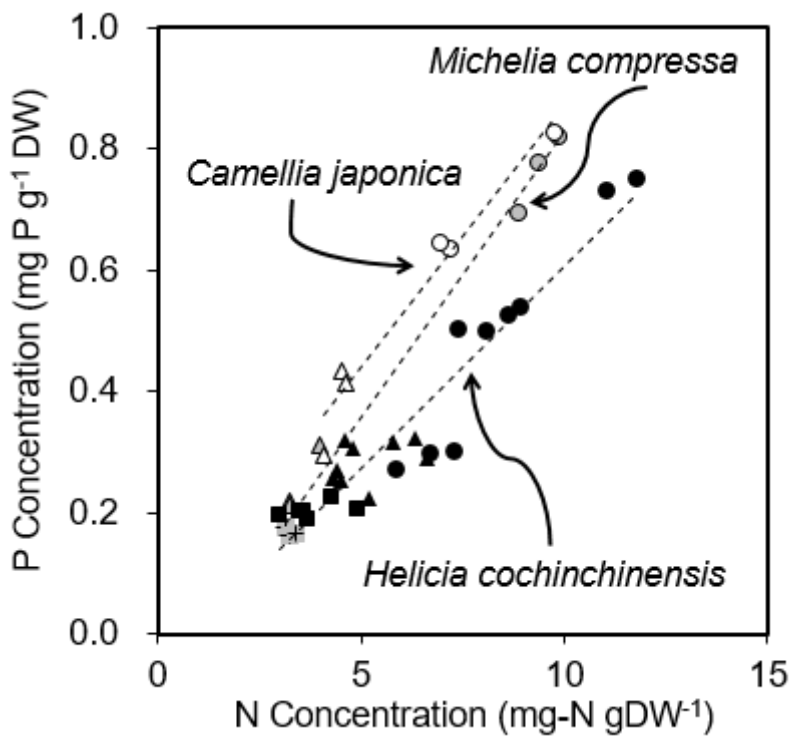


Figure 6

Phosphorus concentration of mature leaves of native trees on Miyajima Island.



## Figure 7

Interaction between nitrogen (N) and phosphorus (P) concentrations in leaves. Black, gray, and white symbols, respectively, denote *Helicia cochinchinensis*, *Michelia compressa*, and *Camellia japonica*. Circles, triangles, and squares, respectively, denote mature, senesced, and dead leaves.