

# *Cellulomonas Triticagri* Sp. Nov., A Novel Actinomycete Isolated From The Rhizosphere Soil Of Wheat (*Triticum Aestivum* L.)

**Chuanyu Han**

Liaoning University <https://orcid.org/0000-0001-8298-1073>

**Yuting Zhang**

Northeast Agricultural University

**Bing Yu**

Northeast Agricultural University

**Qiqi Shan**

Northeast Agricultural University

**Junwei Zhao**

Northeast Agricultural University

**Haoran Shi**

Northeast Agricultural University

**Yuanyuan Tian**

Northeast Agricultural University

**Yan Zhang**

Northeast Agricultural University

**Chunyu Zhu** (✉ [zhuchunyu@lnu.edu.cn](mailto:zhuchunyu@lnu.edu.cn))

Liaoning University <https://orcid.org/0000-0001-6384-3708>

**Wensheng Xiang**

Northeast Agricultural University

---

## Research Article

**Keywords:** *Cellulomonas triticagri* sp. nov., Polyphasic taxonomy, 16S rRNA gene, Genome

**Posted Date:** February 25th, 2022

**DOI:** <https://doi.org/10.21203/rs.3.rs-1311969/v1>

**License:**  This work is licensed under a Creative Commons Attribution 4.0 International License.

[Read Full License](#)

# Abstract

A Gram-positive, motile, rod-shaped and lignin-degraded novel actinomycete, designated strain NEAU-YY56<sup>T</sup>, was isolated from the rhizosphere soil of wheat (*Triticum aestivum* L.) collected from Zhumadian, Henan Province, Central China and characterized using a polyphasic approach. Phylogenetic analysis based on the 16S rRNA gene sequence indicated that strain NEAU-YY56<sup>T</sup> belonged to the genus *Cellulomonas* and exhibited 16S rRNA gene sequence similarities of 98.7, 98.2 and 98.1 % to *Cellulomonas pakistanensis* JCM 18755<sup>T</sup>, *Cellulomonas denverensis* W6929<sup>T</sup> and *Cellulomonas hominis* JCM 12133<sup>T</sup>, respectively. The morphological characteristics [Gram-positive and short rod-shaped cells] and chemotaxonomic properties [whole-cell sugars: glucose, rhamnose and ribose; major polar lipids: diphosphatidylglycerol, phosphatidylethanolamine, phosphatidylinositol mannoside and two unknown glycolipids; major menaquinones: MK-9(H<sub>4</sub>) and MK-9(H<sub>2</sub>); major fatty acids (> 5.0 %): *anteiso*-C<sub>15:0</sub>, C<sub>16:0</sub>, C<sub>14:0</sub> and *anteiso*-C<sub>17:0</sub>; DNA G+C content: 74.7 %] of strain NEAU-YY56<sup>T</sup> have also confirmed the affiliation of the isolate to the genus *Cellulomonas*. However, DNA-DNA relatedness, physiological and biochemical characteristics indicated that strain NEAU-YY56<sup>T</sup> can be clearly differentiated from its closest relatives. Therefore, it is concluded that strain NEAU-YY56<sup>T</sup> represents a novel species of the genus *Cellulomonas*, for which the name *Cellulomonas triticagri* sp. nov. is proposed. The type strain is NEAU-YY56<sup>T</sup> (= DSM 106717<sup>T</sup> = JCM 32550<sup>T</sup>).

## Introduction

The genus *Cellulomonas*, which was first proposed by Bergey et al. (1923) and later amended by Stackebrandt et al. (2006), is a member of the family *Cellulomonadaceae* within the order *Actinomycetales*, and currently comprised 30 validly species ([www.bacterio.net/cellulomonas.html](http://www.bacterio.net/cellulomonas.html)). Typical characteristics of this genus are Gram-positive, aerobic or facultatively anaerobic, short rods, with glucose, rhamnose and ribose as the diagnostic whole-cell sugars, MK-9(H<sub>4</sub>) as the major menaquinone, straight-chain, saturated or unsaturated, and branched-chain saturated fatty acids of the *iso* and *anteiso* types as the major fatty acids and a high DNA G + C content from 68.5 to 76.0% (Li et al. 2020; Stackebrandt and Schumann 1923). In the course of the continuous effort to discover potential antagonist actinobacteria, which is known to produce a vast diversity of antimicrobials, against *Fusarium graminearum*, a *Cellulomonas*-like strain, NEAU-YY56<sup>T</sup>, was isolated. In this article, we report a novel *Cellulomonas* species based on the polyphasic taxonomy analysis, for which the name *Cellulomonas triticagri* sp. nov. is proposed.

## Materials And Methods

### Isolation and maintenance of the organism

The rhizosphere soil sample of wheat (*Triticum aestivum* L.) collected from Zhumadian, Henan Province, Central China (32°98' N, 114°02' E) was processed as described by Zhao et al. (2018) and grown on

Dulcitol-proline agar (DPA) (Cao et al. 2016) supplemented with cycloheximide ( $50 \text{ mg l}^{-1}$ ) and nalidixic acid ( $20 \text{ mg l}^{-1}$ ). After 7 days of incubation aerobically at  $28 \text{ }^{\circ}\text{C}$ , single colonies were transferred and purified on the International *Streptomyces* Project (ISP) medium 3 (Shirling and Gottlieb 1966) and maintained as glycerol suspensions (20%, v/v) at  $-80 \text{ }^{\circ}\text{C}$ . The type strains of *Cellulomonas pakistanensis* JCM 18755<sup>T</sup>, *Cellulomonas denverensis* W6929<sup>T</sup> and *Cellulomonas hominis* JCM 12133<sup>T</sup> were purchased from the Japan Collection of Microorganisms (JCM). All strains were cultured under the same conditions for comparative analysis.

## Phenotypic characteristics

Gram staining was carried out by using the standard Gram stain and morphological characteristics were observed by light microscopy (Nikon ECLIPSE E200) and scanning electron microscopy (Hitachi SU8010) using cultures grown on trypticase soy agar (TSA) medium at  $28 \text{ }^{\circ}\text{C}$  for 2 weeks. Cultural characteristics were determined on yeast extract-malt extract agar (ISP 2), oatmeal agar (ISP 3), inorganic salts-starch agar (ISP 4), glycerol-asparagine agar (ISP 5), peptone-yeast extract iron agar (ISP 6), tyrosine agar (ISP 7) (Shirling and Gottlieb 1966) and TSA media after 2 weeks at  $28 \text{ }^{\circ}\text{C}$ . Color determination was done with ISCC-NBS color charts Standard Samples No 2106 (Kelly 1964). Growth at different temperatures (4, 10, 15, 18, 20, 25, 28, 30, 35, 37, 40, 45 and  $50 \text{ }^{\circ}\text{C}$ ) was determined on TSA after incubation for 2 weeks. The pH range for growth (pH 3.0–11.0, at intervals of 1 pH unit) was tested in trypticase soy broth (TSB). The buffer systems were described by Cao et al. (2020) and Zhao et al. (2019). NaCl tolerance was determined in TSB medium supplemented with various concentrations of NaCl (0–15.0%, w/v, in 0.5% increments) incubation in shake flasks (250 rpm) at  $28 \text{ }^{\circ}\text{C}$  for 2 weeks. Hydrolysis of Tweens (20, 40 and 80) and production of urease were tested as described by Smibert and Krieg (1994). The utilization of sole carbon and nitrogen sources, decomposition of cellulose, hydrolysis of starch and aesculin, reduction of nitrate, coagulation of milk, liquefaction of gelatin and production of  $\text{H}_2\text{S}$  were examined as described previously (Gordon et al. 1974; Yokota et al. 1993). The ability of lignin degradation was determined by the azure B plate decolorization method (Xu et al. 2015).

## Chemotaxonomic characteristics

Biomass for chemotaxonomic studies was obtained by growing the organisms in TSB medium in shake flasks at  $28 \text{ }^{\circ}\text{C}$  for 7 days. Biomass was harvested by centrifugation at 8000 rpm, washed with distilled water twice and then freeze-dried. The whole-cell sugars were tested according to a procedure developed by Lechevalier and Lechevalier (1980). Polar lipids were extracted and examined by two-dimensional TLC and identified using the method of Minnikin et al. (1984). Menaquinones were extracted from freeze-dried biomass and purified according to Collins (1985) and analyzed by a HPLC-UV method (Wu et al. 1989) using an Agilent Extend-C18 Column ( $150 \times 4.6 \text{ mm}$ , i.d.  $5 \mu\text{m}$ ), monitored at 270 nm. The mobile phase was acetonitrile/propyl alcohol (60:40, v/v). Cellular fatty acids were extracted from the biomass as described by Gao et al. (2014) and analyzed by GC-MS using the method of Xiang et al. (2011).

## DNA preparation, amplification and determination of 16S rRNA gene sequences

Extraction of chromosomal DNA and PCR amplification of the 16S rRNA gene sequence were performed using procedures described by Kim et al. (2000). The PCR product was purified and cloned into the vector pMD19-T (Takara) and sequenced using an Applied Biosystems DNA sequencer (model 3730XL). Almost full-length 16S rRNA gene sequence of strain NEAU-YY56<sup>T</sup> (1,513 bp) was multiply aligned in Molecular Evolutionary Genetics Analysis (MEGA) using the Clustal W algorithm and trimmed manually where necessary. Phylogenetic trees were generated with the neighbour-joining (Saitou and Nei 1987) and maximum-likelihood (Felsenstein 1981) algorithms using the software packages MEGA version X (Kumar et al. 2018). The stability of the topology of the phylogenetic tree was evaluated by using the bootstrap method of Felsenstein (1985) with 1000 replicates. The distance matrix was generated using Kimura's two-parameter model (Kimura 1980). All positions containing gaps and missing data were eliminated from the dataset (complete deletion option). Pairwise alignment analysis of 16S rRNA gene sequence similarities between strains was calculated on the EzBioCloud server (<https://www.ezbiocloud.net>) (Yoon et al. 2017a).

#### *Genomic analysis, determination of housekeeping genes sequences, DNA-DNA hybridization and DNA G + C content*

For draft genome sequencing and assembly, the genomic DNA of strain NEAU-YY56<sup>T</sup> was extracted with the SDS method (Nikodinovic et al. 2003). The harvested DNA was detected by the agarose gel electrophoresis and quantified by Qubit. Whole-genome sequencing was performed on the Illumina NovaSeq PE150 platform. A-tailed, ligated to paired-end adaptors and PCR amplified with a 350 bp insert was used for the library construction at the Beijing Novogene Bioinformatics Technology Co., Ltd. Illumina PCR adapter reads and low quality reads from the paired-end were filtered using the readfq (Version 10) remove reads with less than a certain percentage of low-quality bases (mass value B 38 or default is 40 bp), a certain percentage of reads with N bases (default is 10 bp), overlap exceeds a certain threshold (default is 15 bp) and the possibility reads originating from the host. All good quality paired reads were assembled using the SOAP denovo version 2.04 (Li et al. 2008, 2010) (<http://soap.genomics.org.cn/soapdenovo.html>) into several scaffolds. The draft genome of strain NEAU-YY56<sup>T</sup> was deposited in GenBank under the accession number RFFI00000000. Phylogenetic relationship of strain NEAU-YY56<sup>T</sup> was confirmed using partial sequences of housekeeping genes including *gyrB*, *rpoB*, *recA*, *relA* and *atpD* obtained from the draft genome sequences. The sequences of each locus were aligned using MEGA software version X and trimmed manually at the same position before being used for further analysis. Phylogenetic analysis was performed as described above.

Two genomic metrics are now available to distinguish between orthologous genes of closely related prokaryotes, including the calculation of average nucleotide identity (ANI) and digital DNA-DNA hybridization (dDDH). The ANI values and dDDH levels were determined between the genomes of strain NEAU-YY56<sup>T</sup> and *C. pakistanensis* JCM 18755<sup>T</sup> (BONO00000000), *C. denverensis* W6929<sup>T</sup> (BONL00000000) and *C. hominis* JCM 12133<sup>T</sup> (JAHLPH00000000) online at [www.ezbiocloud.net/tools/ani](http://www.ezbiocloud.net/tools/ani) using the ChunLab's online ANI Calculator (Yoon et al. 2017b) and at

<http://ggdc.dsmz.de> using the Genome-to-Genome Distance Calculation (GGDC 3.0) (Meier-Kolthoff et al. 2022), respectively.

## Results And Discussion

### *Phenotypic characteristics*

The morphological characteristics of strain NEAU-YY56<sup>T</sup> showed that the strain had the typical characteristics of the genus *Cellulomonas*. The cells of NEAU-YY56<sup>T</sup> were found to be Gram-positive, motile and rod-shaped about 1.6-1.7 µm in length and 0.3-0.4 µm in width (Fig. 1). Colonies are smooth, circular and pale yellow on TSA medium. Strain NEAU-YY56<sup>T</sup> was observed to grow moderately on TSA, ISP 2 and ISP 3 agar media and poorly on ISP 4, ISP 5, ISP 6 and ISP 7 agar media. No diffusible or melanoid pigments were observed on the tested media. The colonies were in yellow-color-series, cultural characteristics of the isolate are shown in Table S1. The strain was found to grow at a temperature range of 18-40 °C (optimum temperature 28 °C), pH 6.0-8.0 (optimum pH 7.0) and tolerated 0-3.0 % NaCl (optimum NaCl of 0 %). A decolorizing circle was observed around the colony of strain NEAU-YY56<sup>T</sup> on azure B plate, indicating that the strain had lignin degradation ability with a degradation diameter of 29.2 mm (Fig. S1). Certain data of physiological and biochemical characteristics could clearly distinguish strain NEAU-YY56<sup>T</sup> from its closely related strains, *C. pakistanensis* JCM 18755<sup>T</sup>, *C. denverensis* W6929<sup>T</sup> and *C. hominis* JCM 12133<sup>T</sup> (Table 1). For instance, strain NEAU-YY56<sup>T</sup> could not grow at pH 9.0, while the closely related strains could. The tolerance to NaCl of strain NEAU-YY56<sup>T</sup> was up to 3.0 %, which was lower than the closely related strains. Other phenotypic differences include the decomposition of aesculin, hydrolysis of starch, reduction of nitrate and patterns of carbon and nitrogen utilization. Detailed physiological and biochemical characteristics are presented in the species description.

### *Chemotaxonomic characterization*

Strain NEAU-YY56<sup>T</sup> was found to exhibit a range of chemotaxonomic properties that are consistent with the description of the genus *Cellulomonas*. Whole-cell sugars contained glucose, rhamnose and ribose. The polar lipids consisted of diphosphatidylglycerol, phosphatidylethanolamine, phosphatidylinositol mannoside and two unknown glycolipids (Fig. S2). The predominant menaquinones were MK-9(H<sub>4</sub>) (56.1 %) and MK-9(H<sub>2</sub>) (43.9 %). The cellular fatty acids of strain NEAU-YY56<sup>T</sup> were *anteiso*-C<sub>15:0</sub> (37.1 %), C<sub>16:0</sub> (28.3 %), C<sub>14:0</sub> (15.4 %), *anteiso*-C<sub>17:0</sub> (9.4 %), *iso*-C<sub>16:0</sub> (4.0 %), C<sub>18:0</sub> (3.2 %), C<sub>17:0</sub> (1.2 %), C<sub>18:1</sub>ω9c (0.9 %), C<sub>16:1</sub>ω9c (0.4 %) and C<sub>19:0</sub> (0.1 %). The DNA G+C content of strain NEAU-YY56<sup>T</sup> was 74.7 %. All these chemotaxonomic data showed that strain NEAU-YY56<sup>T</sup> should be assigned to the genus *Cellulomonas*.

### *Molecular characteristics*

Identification using the EzBioCloud server revealed that strain NEAU-YY56<sup>T</sup> belongs to the genus *Cellulomonas* and shared high sequence similarities with *C. pakistanensis* JCM 18755<sup>T</sup> (98.7 %), *C. denverensis* W6929<sup>T</sup> (98.2 %) and *C. hominis* JCM 12133<sup>T</sup> (98.1 %). In addition, the phylogenetic trees based on 16S rRNA gene sequences (1,446 bp) reconstructed using the neighbour-joining (Fig. 2) and maximum-likelihood (Fig. S3) algorithms showed that strain NEAU-YY56<sup>T</sup> formed a cluster with *C. pakistanensis* JCM 18755<sup>T</sup>, *C. denverensis* W6929<sup>T</sup> and *C. hominis* JCM 12133<sup>T</sup>, which was further confirmed by the phylogenetic tree based on the concatenated sequences (3,594 bp) of the partial sequences of housekeeping genes including *gyrB*, *rpoB*, *recA*, *relA* and *atpD* reconstructed by the neighbour-joining (Fig. 3) and maximum-likelihood (Fig. S4) algorithms. Thus, based on these phylogenetic relationships and 16S rRNA sequences similarities, the isolate was grouped with members of the genus *Cellulomonas*.

The genome sequence of the assembled strain NEAU-YY56<sup>T</sup> was 4,391,169 bp and has a DNA G+C content of 74.7 %. Also, it was made up of 280 scaffolds with an N50 of 30,351 bp. The genome sequence was deposited in the GenBank/EMBL/DDBJ with the accession number RFFI00000000. And NCBI Prokaryotic Genome Annotation Pipeline (PGAP) showed that there were three copies of 5S rRNA genes, four copies of 16S rRNA genes, one copy of 23S rRNA gene, 48 tRNA genes, three copies of noncoding RNA genes. More specific genomic information and obvious features are presented in Table 2. AntiSMASH 6.0 was used genome mining analysis led to the identification of 9 putative gene clusters responsible for the production of diverse secondary metabolites. Of which 8 putative gene clusters displayed low similarity to the known gene clusters of ty lactone, terpene and so on. And one putative gene cluster was 100% similar to alkylresorcinol. Of the genome of 4,174 genes, 3,294 genes were annotated and classified into known functions according to the KEGG database. By analyzing the genome of the strain NEAU-YY56<sup>T</sup>, there were 855 genes involved in metabolism-associated pathways. Genome analysis of the COG database revealed that strain NEAU-YY56<sup>T</sup> contained 272 amino acid transport and metabolism genes, 413 carbohydrate transport and metabolism genes, 335 transcription genes, 222 inorganic ion transport and metabolism genes and 299 general function prediction only genes. Moreover, the genomic analysis of the COG database showed that strain NEAU-YY56<sup>T</sup> contained a gene encoding laccase (GM002387) and a gene encoding catalase (GM003718), both of which are key enzymes in lignin degradation (Blázquez et al. 2017; Zhang 2006). Therefore, the genomic analysis also confirmed that strain NEAU-YY56<sup>T</sup> could decompose lignin.

ANI value and dDDH level were employed to determine whether the strain could be considered to represent a new species. The ANI values between strain NEAU-YY56<sup>T</sup> and its reference strains, *C. pakistanensis* JCM 18755<sup>T</sup>, *C. denverensis* W6929<sup>T</sup> and *C. hominis* JCM 12133<sup>T</sup>, were 83.5 %, 79.0 % and 83.1 %, respectively, which were lower than the 95 %-96 % threshold defined by prokaryotic species (Richter and Rossello-Mora 2009; Chun and Rainey 2014). Similarly, the low dDDH levels between strain NEAU-YY56<sup>T</sup> and *C. pakistanensis* JCM 18755<sup>T</sup> (26.8 ± 2.4 %), *C. denverensis* W6929<sup>T</sup> (21.8 ± 2.3 %) and *C. hominis* JCM 12133<sup>T</sup> (26.2 ± 2.4 %) were also well below the threshold (70 %) recommended by

Wayne et al. (1987) for assigning strains to the same genomic species. These results supported the conclusion that strain NEAU-YY56<sup>T</sup> represents a novel species of the genus *Cellulomonas*.

Therefore, based on the distinct morphological, physiological and biochemical, chemotaxonomic and phylogenetic and DNA-DNA relatedness data mentioned above, strain NEAU-YY56<sup>T</sup> represents a novel species of the genus *Cellulomonas*, for which the name *Cellulomonas triticagri* sp. nov. is proposed.

### **Description of *Cellulomonas triticagri* sp. nov.**

*Cellulomonas triticagri* (tri.tic.a'gri. L. neut. n. *triticum* wheat; L. masc. n. *ager* field; N.L. gen. n. *triticagri* of a wheat field)

Short rods, about 1.6-1.7 µm in length and 0.3-0.4 µm in width. Gram-stain positive, aerobic and motile actinomycete that produces pale yellow and smooth mycelium after 2 weeks at 28 °C on TSA medium. Moderate growth is observed on TSA, ISP 2 and ISP 3 agar media; poor growth on ISP 4, ISP 5, ISP 6 and ISP 7 agar media. Colonies are in yellow-color-series. No diffusible or melanoid pigments are observed on the tested media. Grows at 18-40 °C (optimum 28 °C), at pH 6.0-8.0 (optimum, pH 7.0) and with 0-3.0 % (w/v, optimum 0 %) NaCl. Hydrolysis starch and Tweens (20, 40 and 80), but not aesculin. Catalase is produced, but H<sub>2</sub>S and urease are not. Besides that, negative for decomposition of cellulose, peptonization and coagulation of milk, reduction of nitrate and liquefaction of gelatin. D-Fructose, *meso*-inositol, lactose, D-maltose, D-mannose, L-rhamnose and D-sorbitol are utilized as sole carbon sources, but not L-arabinose, dulcitol, D-galactose, D-glucose, D-mannitol, D-raffinose, D-ribose, D-sucrose or D-xylose. L-Arginine, L-glutamic acid, L-glutamine and L-tyrosine are utilized as sole nitrogen sources, but not L-alanine, L-asparagine, L-aspartic acid, creatine, glycine, L-proline, L-serine or L-threonine. Whole-cell sugars contain glucose, rhamnose and ribose. The polar lipid profile consists of diphosphatidylglycerol, phosphatidylethanolamine, phosphatidylinositol mannoside and two unknown glycolipids. The predominant menaquinones are MK-9(H<sub>4</sub>) and MK-9(H<sub>2</sub>). The predominant cellular fatty acids (> 5.0 %) are *anteiso*-C<sub>15:0</sub>, C<sub>16:0</sub>, C<sub>14:0</sub> and *anteiso*-C<sub>17:0</sub>. The G+C content of the DNA of the type strain is 74.7 %.

The type strain is NEAU-YY56<sup>T</sup> (= DSM 106717<sup>T</sup> = JCM 32550<sup>T</sup>), was isolated from the rhizosphere soil of wheat (*Triticum aestivum* L.) collected from Zhumadian, Henan Province, Central China. The GenBank accession numbers for the 16S rRNA gene sequence and the draft genome sequence of the type strain are MH144588 and RFFI00000000, respectively.

## **Abbreviations**

ANI, average nucleotide identity; *atpD*, ATP synthase F1, beta subunit; dDDH, digital DNA:DNA hybridization; DPA, dulcitol-proline agar; DPG, diphosphatidylglycerol; DSM, Deutsche Sammlung von Mikroorganismen und Zellkulturen; GC-MS, Gas Chromatography-Mass Spectrometer; GL, unknown glycolipid; GO, Gene Ontology; *gyrB*, DNA gyrase subunit B; ISCC-NBS, Inter-society color council-national

bureau of standards; ISP, International *Streptomyces* Project; ISP 2, yeast extract-malt extract agar; ISP 3, oatmeal agar; ISP 4, inorganic salts-starch agar; ISP 5, glycerol-asparagine agar; ISP 6, peptone-yeast extract iron agar; ISP 7, tyrosine agar; JCM, Japan Collection of Microorganisms; KEGG, Kyoto Encyclopedia of Genes and Genomes; MEGA, Molecular Evolutionary Genetics Analysis; MLSA, multilocus sequence analysis; PE, phosphatidylethanolamine; PGAP, Prokaryotic Genome Annotation Pipeline; PIM, phosphatidylinositol mannoside; *recA*, recombinase A; *relA*, ppGpp synthetase; *rpoB*, RNA polymerase, beta subunit; TSA, trypticase soy agar; TSB, trypticase soy both.

## Declarations

### Acknowledgements

This work was supported in part by grants from the Youth Scientific Research Fund of Liaoning University (LDQN-202010), People's Livelihood Science and Technology Program of Liaoning Provincial Department of Science and Technology (2021JH2/10200015) and General Research Project Found of Liaoning Province Education Department (LJC201910). We are grateful to Professor Aharon Oren (The Hebrew University of Jerusalem) for helpful advice on the specific epithet.

### Author Contributions

Chuanyu Han and Yuting Zhang performed the laboratory experiments, analyzed the data, and drafted the manuscript. Bing Yu contributed to the biochemical characterization. Qiqi Shan and Yuanyuan Tian contributed to the morphological analyzes. Haoran Shi contributed to the fatty acids determination. Yan Zhang contributed to the Genomic analysis. Junwei Zhao participated to the discussions of each section of experiments. Wensheng Xiang and Chunyu Zhu designed the experiments and revised the manuscript.

### Compliance with ethical standards

### Conflict of interest

The authors declare that they have no conflict of interest.

### Ethical standards

This article does not contain any studies with human participants and/or animals performed by any of the authors. The formal consent is not required in this study.

## References

1. Bergey DH, Harrison FC, Breed RS, Hammer BW, Huntoon FM (1923) Bergey's Manual of Determinative Bacteriology. Williams & Wilkins, Baltimore
2. Blázquez A, Ball AS, González-Pérez JA, Jiménez-Morillo NT, González-Vila F, Arias ME, Hernandez M (2017) Laccase SilA from *Streptomyces ipomoeae* CECT 3341, a key enzyme for the degradation of



lignin from agricultural residues? PLoS ONE 12(11):e0187649

3. Cao P, Li CX, Tan KF, Liu CZ, Xu X, Zhang SY, Wang XJ, Zhao JW, Xiang WS (2020) Characterization, Phylogenetic Analyses and Pathogenicity of *Enterobacter cloacae* on rice seedlings in Heilongjiang Province, China. *Plant Dis* 104(6):1601–1609
4. Cao P, Liu CX, Sun PY, Fu XP, Wang SX, Wu FZ, Wang XJ (2016) An endophytic *Streptomyces* sp. strain DHV3-2 from diseased root as a potential biocontrol agent against *Verticillium dahliae* and growth elicitor in tomato (*Solanum lycopersicum*). *Antonie Van Leeuwenhoek* 109(12):1573–1582
5. Chun J, Rainey FA (2014) Integrating genomics into the taxonomy and systematics of the Bacteria and Archaea. *Int J Syst Evol Microbiol* 64(Pt2):316–324
6. Collins MD (1985) Chemical Methods in Bacterial Systematics. In: Goodfellow M, Minnikin DE (eds) Isoprenoid quinone analyses in bacterial classification and identification. Academic Press, London, pp 267–284
7. Felsenstein J (1981) Evolutionary trees from DNA sequences: a maximum likelihood approach. *J Mol Evol* 17(6):368–376
8. Felsenstein J (1985) Confidence limits on phylogenies: an approach using the bootstrap. *Evolution* 39(4):783–791
9. Gao RX, Liu CX, Zhao JW, Jia FY, Yu C, Yang LY, Wang XJ, Xiang WS (2014) *Micromonospora jinlongensis* sp. nov., isolated from muddy soil in China and emended description of the genus *Micromonospora*. *Antonie Van Leeuwenhoek* 105(2):307–315
10. Gordon RE, Barnett DA, Handerhan JE, Pang C (1974) *Nocardia coeliaca*, *Nocardia autotrophica*, and the nocardin strain. *Int J Syst Bacteriol* 24(1):54–63
11. Kelly KL (1964) Inter-society color council-national bureau of standards color-name charts illustrated with centroid colors published in US
12. Kim SB, Brown R, Oldfield C, Gilbert SC, Iliarionov S, Goodfellow (2000) *Gordonia amicalis* sp. nov., a novel dibenzothiophene-desulphurizing actinomycete. *Int J Syst Evol Microbiol* 50(6):2031–2036
13. Kimura M (1980) A simple method for estimating evolutionary rates of base substitutions through comparative studies of nucleotide sequences. *J Mol Evol* 16(2):111–120
14. Kumar S, Stecher G, Li M, Knyaz C, Tamura K (2018) MEGA X: Molecular Evolutionary Genetics Analysis across Computing Platforms. *Mol Biol Evol* 35(6):1547–1549
15. Lechevalier MP, Lechevalier HA (1980) The chemotaxonomy of actinomycetes. In: Dietz A, Thayer DW (editors) Actinomycete taxonomy special publication, vol 6. Society of Industrial Microbiology; Arlington 227–291
16. Li R, Li Y, Kristiansen K, Wang J (2008) SOAP: short oligonucleotide alignment program. *Bioinformatics* 24(5):713–714
17. Li R, Zhu H, Ruan J, Qian W, Fang X, Shi Z, Li Y, Li S, Shan G, Kristiansen K, Li S, Yang H, Wang J, Wang J (2010) De novo assembly of human genomes with massively parallel short read sequencing. *Genome Res* 20(2):265–272

18. Li YQ, Zhang H, Xiao M, Dong ZY, Zhang JY, Narsing Rao MP, Li WJ (2020) *Cellulomonas endophytica* sp. nov., isolated from *Gastrodia elata* Blume. *Int J Syst Evol Microbiol* 70(5):3091–3095
19. Meier-Kolthoff JP, Sardà Carbasse J, Peinado-Olarte RL, Göker M (2022) TYGS and LPSN: a database tandem for fast and reliable genome-based classification and nomenclature of prokaryotes. *Nucleic Acid Res* 50(D1):D801–D807
20. Minnikin DE, O'Donnell AG, Goodfellow M, Alderson G, Athalye M, Schaal A, Parlett JH (1984) An integrated procedure for the extraction of bacterial isoprenoid quinones and polar lipids. *J Microbiol Methods* 2(5):233–241
21. Nikodinovic J, Barrow KD, Chuck JA (2003) High yield preparation of genomic DNA from *Streptomyces*. *Biotechniques* 35(5):932–934
22. Richter M, Rossello-Mora R (2009) Shifting the genomic gold standard for the prokaryotic species definition. *Proc Natl Acad Sci USA* 106(45):19126–19131
23. Saitou N, Nei M (1987) The neighbor-joining method: a new method for reconstructing phylogenetic trees. *Mol Biol Evol* 4(4):406–425
24. Shirling EB, Gottlieb D (1966) Methods for characterization of *Streptomyces* species. *Int J Syst Bacteriol* 16(3):313–340
25. Smibert RM, Krieg NR (1994) Phenotypic characterisation. In: Gerhardt P, Murray RGE, Wood WA, Krieg NR (editors). *Methods for general and molecular bacteriology*. American Society for Microbiology 607–654
26. Stackebrandt E, Schumann P, Prauser H (2006) The prokaryotes: a handbook on the biology of bacteria. The family *Cellulomonadaceae*, New York 983–1001
27. Stackebrandt E, Schumann P (1923) Genus I. *Cellulomonas*, Bergey, Harrison, Breed, Hammer and Huntoon 1923, 154 emend. mut. char. Clark 1952, 50 AL. In: Goodfellow M, Kämpfer P, Busse HJ, Trujillo ME, Suzuki K et al (eds) *Bergey's Manual of Systematic Bacteriology*, vol 5, 2nd edn. Springer, New York, pp 702–710
28. Wayne LG, Brenner DJ, Colwell RR, Grimont PAD, Kandler O, Krichevsky MI, Moore LH, Moore WEC, Murray RGE, Stackebrandt E, Starr MP, Trüper HG (1987) Report of the ad hoc committee on reconciliation of approaches to bacterial systematics. *Int J Syst Bacteriol* 37(4):463–464
29. Wu C, Lu X, Qin M, Wang Y, Ruan J (1989) Analysis of menaquinone compound in microbial cells by HPLC. *Microbiology* 16:176–178
30. Xiang WS, Liu CX, Wang XJ, Du J, Xi LJ, Huang Y (2011) *Actinoalloteichus nanshanensis* sp. nov., isolated from the rhizosphere of a fig tree (*Ficus religiosa*). *Int J Syst Evol Microbiol* 61(5):1165–1169
31. Xu CY, Singh D, Dorgan KM, Zhang XY, Chen SL (2015) Screening of ligninolytic fungi for biological pretreatment of lignocellulosic biomass. *Can J Microbiol* 61(10):745–752
32. Yokota A, Tamura T, Hasegawa T, Huang LH (1993) *Catenuloplanes japonicas* gen. nov., sp. nov., nom. rev., a new genus of the order *Actinomycetales*. *Int J Syst Bacteriol* 43(4):805–812

33. Yoon SH, Ha SM, Kwon S, Lim J, Kim Y, Seo H, Chun J (2017a) Introducing EzBioCloud: A taxonomically united database of 16S rRNA and whole genome assemblies. *Int J Syst Evol Microbiol* 67(5):1613–1617
34. Yoon SH, Ha SM, Lim J, Kwon S, Chun J (2017b) A large-scale evaluation of algorithms to calculate average nucleotide identity. *Antonie Van Leeuwenhoek* 110(10):1281–1286
35. Zhang H (2006) New Advance of study on ligninolytic enzymes. *Tianjin Agricultural Sciences* 3:8–12
36. Zhao JW, Han LY, Yu MY, Cao P, Li DM, Guo XW, Liu YQ, Wang XJ, Xiang WS (2019) Characterization of *Streptomyces sporangiiformans* sp. nov., a Novel Soil Actinomycete with Antibacterial Activity against *Ralstonia solanacearum*. *Microorganisms* 7(9):360
37. Zhao JW, Shi LL, Li WC, Wang JB, Wang H, Tian YY, Xiang WS, Wang XJ (2018) *Streptomyces tritici* sp. nov. a novel actinomycete isolated from rhizosphere soil of wheat (*Triticum aestivum* L.). *Int J Syst Evol Microbiol* 68(2):492–497

## Tables

**Table1.** Differential characteristics between strain NEAU-YY56<sup>T</sup> and the closest related *Cellulomonas* species.

Characteristics	1	2	3	4
Growth temperature range (°C)	18-40	10-37	35-45	15-40
Growth pH	6.0-8.0	6.0-9.0	5.0-10.0	5.0-9.0
NaCl Tolerance (% w/v)	3.0	12.0	11.0	9.0
Aesculin decomposition	-	+	+	+
Nitrate reduction	-	+	+	+
Starch hydrolysis	+	-	-	-
Utilize as sole carbon source:				
L-Arabinose	-	-	-	+
D-Fructose	+	+	+	-
D-Galactose	-	+	+	-
D-Glucose	-	-	+	-
D-Mannitol	-	+	-	-
D-Sucrose	-	+	+	+
Utilize as sole nitrogen source:				
L-Aspartic acid	-	+	+	+
L-Glutamic acid	+	-	+	-
Glycine	-	+	+	-

Strains: 1, NEAU-YY56<sup>T</sup>; 2, *C. pakistanensis* JCM 18755<sup>T</sup>; 3, *C. denverensis* W6929<sup>T</sup>; 4, *C. hominis* JCM 12133<sup>T</sup>. Abbreviation: +, positive; -, negative.

**Table 2.** Genome sequence features of strain NEAU-YY56<sup>T</sup> and the closest related *Cellulomonas* species.

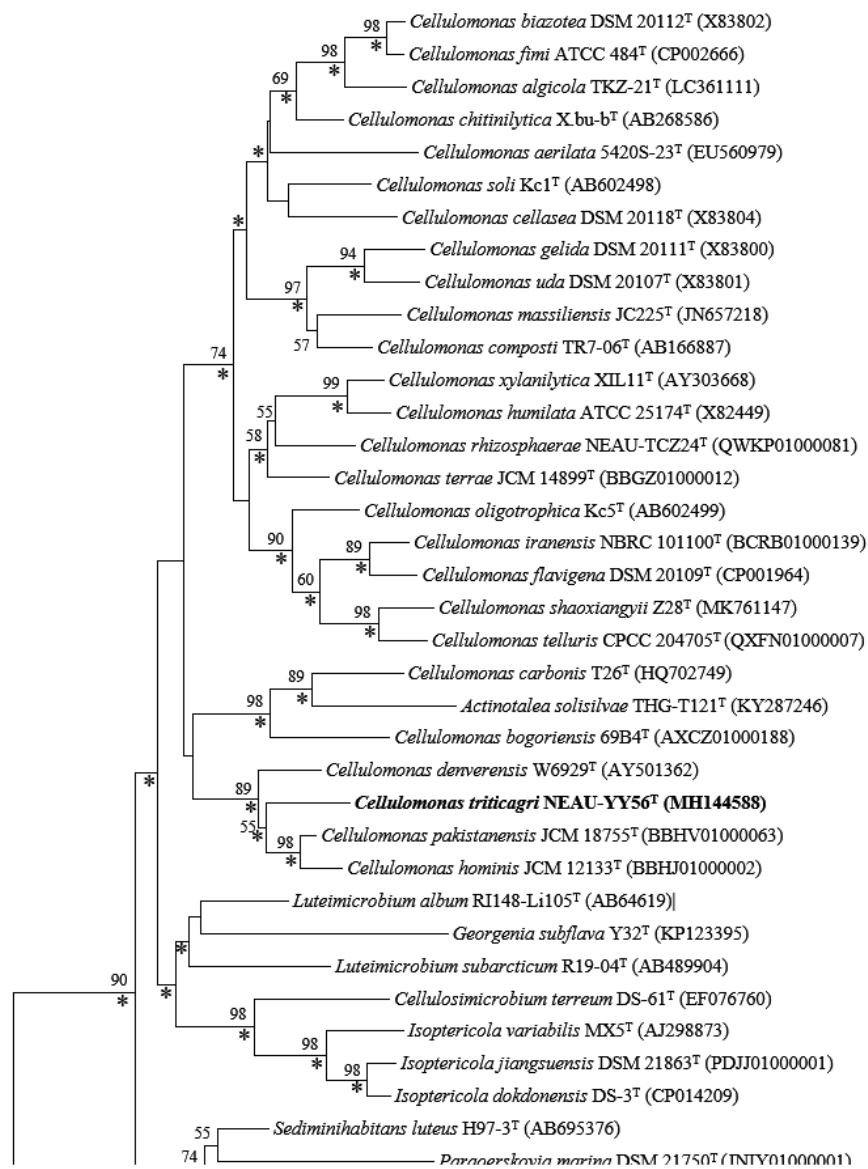
Features	1	2	3	4
Accession No.	RFFI00000000	BONO00000000	BONL00000000	JAHLPH00000000
BioProject	PRJNA498149	PRJDB9993	PRJDB9957	PRJNA733006
Sequencing Technology	Illumina HiSeq	Illumina HiSeq 1000	Illumina HiSeq 1000	Illumina
Assembly method	SOAP denovo v. 2.04	newbler v. 3.0	newbler v. 3.0	SPAdes v. 3.9.0
Genome coverage	306x	141x	143x	99x
Contigs	282	57	54	14
Genome size (bp)	4,391,169	4,003,496	3,997,997	4,117,008
DNA G+C content (%)	74.7	75.8	72.9	75.4
Genes (coding)	4,020	3,679	3,677	3,731
tRNAs	48	47	45	46
rRNA	8	3	3	3
ncRNA	3	3	3	3

Strains: 1, NEAU-YY56<sup>T</sup>; 2, *C. pakistanensis* JCM 18755<sup>T</sup>; 3, *C. denverensis* W6929<sup>T</sup>; 4, *C. hominis* JCM 12133<sup>T</sup>.

## Figures

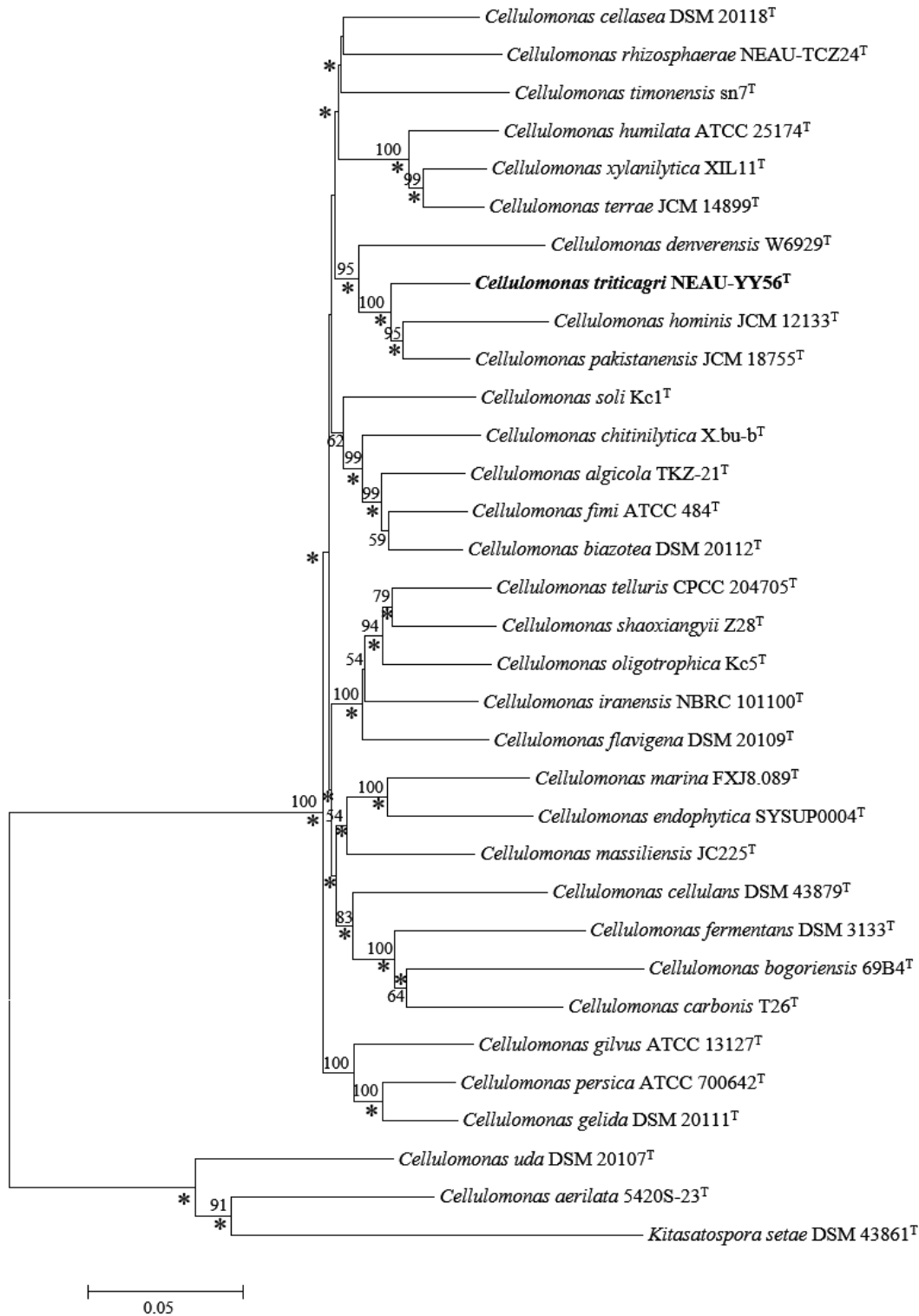
### Figure 1

Scanning electron micrograph of strain NEAU-YY56<sup>T</sup> grown on TSA medium at 28 °C for 2 weeks.



**Figure 2**

Neighbour-joining tree based on 16S rRNA gene sequence (1446) showing relationship between strain NEAU-YY56<sup>T</sup> (in bold) and its near neighbours based on 16S rRNA gene sequence. The out-group used was *Kitasatospora setae* DSM 43861<sup>T</sup>. Only bootstrap values above 50 % (percentages of 1000 replications) are indicated. Asterisks indicate branches also recovered in the maximum-likelihood tree. Bar, 0.01 nucleotide substitutions per site.



**Figure 3**

Neighbour-joining tree based on MLSA analysis of the concatenated partial sequences from five housekeeping genes (*gyrB*, *rpoB*, *recA*, *relA* and *atpD*) of strain NEAU-YY56<sup>T</sup> (in bold) and related taxa. Only bootstrap values above 50 % (percentages of 1000 replications) are indicated. *Kitasatospora setae* DSM 43861<sup>T</sup> was used as an out-group. Asterisks indicate branches also recovered in the maximum-likelihood tree; Bar, 0.05 nucleotide substitutions per site.

## Supplementary Files

This is a list of supplementary files associated with this preprint. Click to download.

- [SupplementaryMaterial.doc](#)