

**Gentec**  
INTERNATIONAL

CANADA'S BEST  
MANAGED  
COMPANIES

# Mobile Electronics



*PHENIX GOLD*

**ALPINE**

**BEST** KITS & HARNESSES

*Stinger*

**ENERGY**

Your one source solution for you mobile audio accessory needs



# Gentec

INTERNATIONAL

www.gentec-intl.com

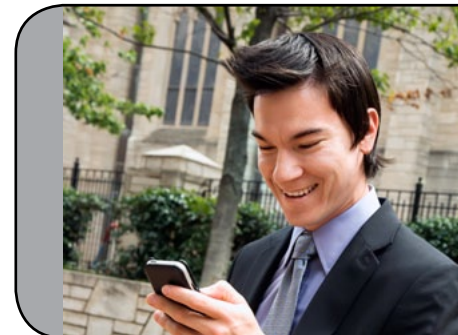
## Providing the accessories you need from quality brands you can rely on.



Imaging Accessories



Electronic Accessories



Mobile Phone Accessories



Sporting Goods

Everything you need is at your fingertips at [www.gentec-intl.com](http://www.gentec-intl.com)



Gentec  
INTERNATIONAL

www.gentec-intl.com, Tel. 905.513.7733, Fax. 905.513.7740, sales@gentec-intl.com



## Speakers

### ALPINE R SERIES SIX INCH COAXIAL TWO WAY SPEAKERS



**R-S65**  
**\$299.99**

- Alpine R-S65 R-Series 6 1/2-inch Coaxial 2-Way Speakers Specifications: 100W RMS, 300W Peak, 4 Ohm Frequency Response 65Hz-29kHz 1-inch Silk Tweeter

### ALPINE R SERIES SIX AND HALF INCH COMPONENT TWO WAY SPEAKERS



**R-S65C**  
**\$419.00**

- R-S65C 6.5 Inch Component 2-Way Speakers
- 100W RMS, 300W Peak, 4 Ohm
- Frequency Response: 65Hz-29kHz

### ALPINE R SERIES SIX BY EIGHT COAXIAL TWO WAY SPEAKERS



**R-S68**  
**\$299.00**

- R-S68 R-Series 6x8-inch Coaxial 2-Way Speakers
- Specifications: 100W RMS, 300W Peak, 4 Ohm
- Frequency Response 63Hz-29kHz
- 1-inch Silk Tweeter

### ALPINE R SERIES SIX BY NINE TWO WAY SPEAKERS



**R-S69**  
**\$299.00**

- R-S69 R-Series 6x9-inch Coaxial 2-Way Speakers
- Specifications: 100W RMS, 300W Peak, 4 Ohm Frequency Response 60Hz-29kHz 1-inch Silk Tweeter



### TYPE R 1 INCH SILK DOME TWEETER ST

**SPR-10TW**

**\$249.00**



- 1" silk dome tweeters (pair)
- Flush, top, and bottom-mount hardware included
- External crossovers with 4-way level control
- Power handling: 5-150 watts RMS (450 watts peak power)
- Frequency response: 1KHz-29KHz

### 5 AND A QUARTER INCH COAXIAL 2 WAY SPEAKER 90W RMS PEAK

**SPR-50**

**\$299.00**



- 90 Watts RMS with 270 Watts Peak
- Ultra Smooth 1" Silk Dome Tweeter
- Swivel Tweeter
- Large Square Wire Dual-Layer Voice Coil
- High-performance Linear Drive Motor

### TYPE R 5 AND A QUARTER 2 WAY COMPONENT SPEAKER

**SPR-50C**

**\$429.00**



- 100 Watts RMS and 300 Watts Peak
- Ultra Smooth 1" Silk Dome Tweeter
- Swivel Tweeter Mounting
- Large Square Wire Dual-Layer Voice Coil
- High-performance Linear Drive Motor

### TYPE-S 1 INCH SILK DOME TWEETER SET

**SPS-110TW**

**\$199.00**



- 1" silk dome tweeters (pair)
- Flush, top, and bottom-mount hardware included
- Power handling: 5-100 watts RMS (300 watts peak power)
- Frequency response: 1KHz-22KHz



### 4 INCH COAXIAL 2 WAY SPEAKER 45W RMS PEAK

**SPS-410**

**\$179.00**



- Great sounding speaker upgrade at a competitive price.
- Perfect for OEM upgrade, with many sizes to choose from to suit almost any vehicle
- New cosmetics that look good in your car, and fit easily in stock speaker locations
- Improve the output and sound quality of your vehicle with these highly efficient speaker choices.

### 5 AND A QUARTER INCH COAXIAL 2 WAY SPEAKER 75W RMS PEAK

**SPS-510**

**\$179.00**



- Great sounding speaker upgrade at a competitive price.
- Perfect for OEM upgrade, with many sizes to choose from to suit almost any vehicle
- New cosmetics that look good in your car, and fit easily in stock speaker locations
- Improve the output and sound quality of your vehicle with these highly efficient speaker choices.

### 5 X 7 INCH COAXIAL 2 WAY SPEAKER 75W RMS PEAK

**SPS-517**

**\$179.00**



- Great sounding speaker upgrade at a competitive price.
- Perfect for OEM upgrade, with many sizes to choose from to suit almost any vehicle
- New cosmetics that look good in your car, and fit easily in stock speaker locations
- Improve the output and sound quality of your vehicle with these highly efficient speaker choices.

### 6 AND A HALF INCH COAXIAL 2 WAY SPEAKER 80W RMS PEAK

**SPS-610**

**\$179.00**



- Great sounding speaker upgrade at a competitive price.
- Perfect for OEM upgrade, with many sizes to choose from to suit almost any vehicle
- New cosmetics that look good in your car, and fit easily in stock speaker locations
- Improve the output and sound quality of your vehicle with these highly efficient speaker choices.





## 6 AND A HALF INCH COMPONENT 2 WAY SPEAKER SYSTEM 80W RMS PEAK

**SPS-610C**

**\$229.00**



- 1" Wide-Range Silk Dome Tweeter
- Mounting Design: Shallow Mounting Design
- Swivel Tweeter
- Voice Coil Type: Large Size Voice Coil
- Cone Material: Tuned Poly-Mica Cone

## 6 X 9 INCH COAXIAL 3 WAY SPEAKER 85W RMS PEAK

**SPS-619**

**\$229.00**



- Great sounding speaker upgrade at a competitive price.
- Perfect for OEM upgrade, with many sizes to choose from to suit almost any vehicle
- New cosmetics that look good in your car, and fit easily in stock speaker locations
- Improve the output and sound quality of your vehicle with these highly efficient speaker choices.

## ALPINE - GM TRUCK SPKR SYSTEM 07-13

**SPT-21GM**

**\$1,099.00**



- The SPT-21GM GM truck speaker system consists of two pairs of speakers that are engineered to fit and sound great in 2007-2013 GM full size trucks.
- A pair of 2-way, 6 1/2-inch component speakers are supplied for the front doors, and a pair of 6 1/2-inch coaxial speakers are used for the rear.

## X SERIES SIX AND HALF COAXIAL TWO WAY SPEAKERS

**X-S65**

**\$599.00**



- Specifications: 110W RMS, 330W Peak, 4 Ohm Frequency Response: 60Hz-40Hz 1-inch Carbon Graphite Tweeter



### **X SERIES SIX AND HALF INCH COMPONENT TWO WAY SPEAKERS**

**X-S65C**

**\$719.00**



- Specifications: 110W RMS, 330W Peak, 4 Ohm Frequency Response: 60Hz-40Hz 1-inch Carbon Graphite Tweeter

### **X SERIES SIX BY NINE COMPONENT TWO WAY SPEAKERS**

**X-S69C**

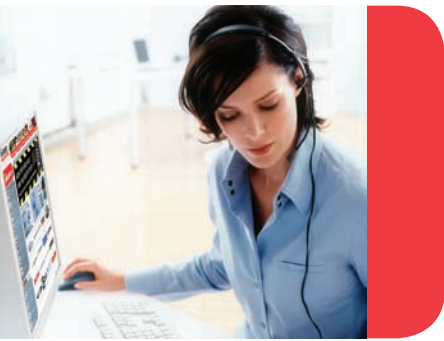
**\$719.00**



- Specifications: 110W RMS, 330W Peak, 4 Ohm Frequency Response: 60Hz-40Hz 1-inch Carbon Graphite Tweeter







### We're helping retailers become more profitable.

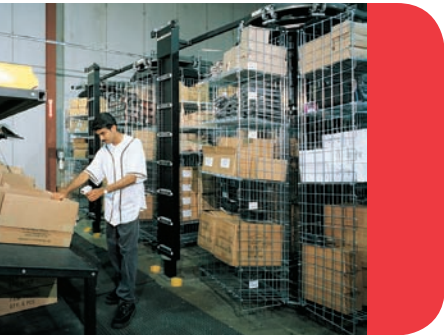
In today's fast-paced retail environment, the right partner can make a world of difference. Our commitment to our clients is simple yet powerful – we work closely with them to maximize the potential of each and every electronic, wireless telecom, photographic imaging, digital imaging, and optical product they carry.

How do we do this? By taking the time to understand the marketplace in which our customers operate as well as their existing product mix, by looking for ways to build on their success, by introducing new opportunities and leading edge products, and by providing after-sales service that is second to none.



### Satisfied customers, improved sales, and increased profit margins.

At Gentec International, we achieve these results by working in partnership with our clients. We do our homework – we understand the challenges retailers face and what their customers want. We visit our clients' stores to get a clear sense of what they carry and how they're being presented. Then, we recommend ways that we believe can help increase their sales. This might include additions to the range of products they carry or fresh approaches to packaging, display, and promotion. Finally, we ensure that our clients have everything they need to make the sale – from custom displays to point-of-purchase support. And, throughout the year, we make regular visits to provide in-store detailing.



### Our clients count on us for effortless ordering and error-free fulfillment.

Gentec International's high cube, state-of-the-art computerized 100,000 square foot warehouse and distribution centre allows us to offer efficient, seamless service to our customers.

We manage our stock with the goal to eliminate back orders. In fact, based on our clients' forecasts, we guarantee we'll have 100% of the items they need in stock, 100% of the time. Plus, when they place an order with Gentec International, most shipments leave our warehouse within 24 hours. And we make every effort to ensure that the shipment is accurate – so that everything they ordered arrives.

At Gentec International, we also make regular investments to ensure that our ability to serve our clients continually improves.



### A reputation for service and a head for business.

The same principles our clients used to build their companies are at work in ours. With the support of over 100 people in the Gentec family worldwide, our management team has the depth of experience and breadth of knowledge needed in today's fast-paced world. And, we're constantly evaluating our people, processes, and products to ensure that we are exceeding our customers' expectations.



Together we achieve the extraordinary™

[www.gentec-intl.com](http://www.gentec-intl.com)

ELECTROHOME

ENERGY

Bushnell

SanDisk

OPTEX

ZEISS

planet wireless

SIGMA

GITZO

iQ ROOTS Energizer

KATA

ALPINE

ion

Klipsch

Manfrotto

NATIONAL GEOGRAPHIC



Corporate Head Office  
90 Royal Crest Court  
Markham, Ontario, Canada L3R 9X6  
Tel. 905 513 7733 Fax. 905 513 7740

[www.gentec-intl.com](http://www.gentec-intl.com)

Quebec Office/Eastern Regional  
Montreal, Quebec, Canada  
Tel/Fax. 514 353 0311

Far East Buying Office  
1007 - 1014 Lippo Sun Plaza  
28 Canton Road  
Tsim Sha Tsui  
Kowloon, Hong Kong



ONLINE BUSINESS SOLUTIONS

Gentec Direct is the easiest way to access all the products and services that Gentec International has to offer. Search for products, place and track orders, view your account history, access product specifications and support material, plus much more.

[www.gentecdirect.com](http://www.gentecdirect.com)