

SAP

INVENTORY MANAGEMENT – INVENTORY ADJUSTMENT (Both Positive and Negative)

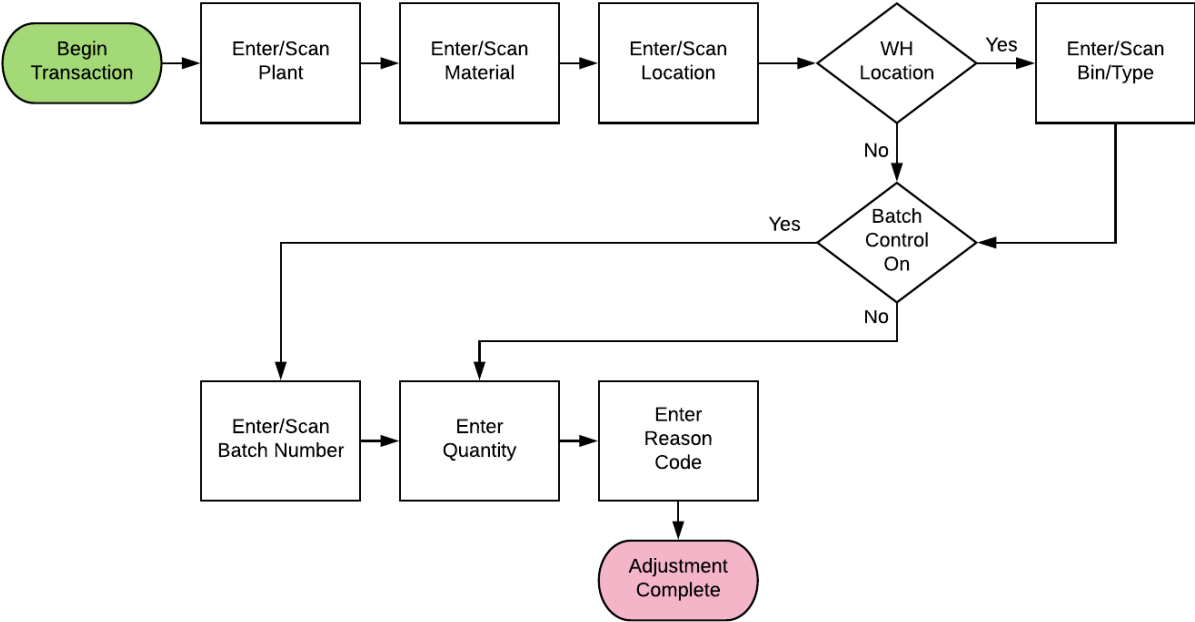
This application will adjust inventory levels up or down for a material depending on the menu selection. In the background, SAP updates the inventory and accounting records as required.

RFgen Functional Documentation
2019

RFgen provides its customers SAP-validated, ready-to-use suites of “Open Source” applications and a development environment that can be used to create new apps or to modify existing apps.

This document describes the business workflow and technical information used in this application.

SAP: Inventory Management (IM) – Inventory Adjustment (Both Positive and Negative)



FIMIA0200 – Inventory Adjustment (Both Positive and Negative)

This application is used to update SAP with the count of a line on an Inventory Document.



Description of Workflow

First the user scans, enters, or searches for a plant value.

The user then scans, enters, or searches for a material. To search for a material, the first one or more characters must be entered to reduce the search list results. The material's description will be displayed.

If the material is Batch-controlled, the Batch field will be visible.

The user scans, enters, or searches for a location where the material exists. If the location is a warehouse-controlled location the Bin and Type fields will appear.

The user scans, enters, or searches for a Bin number that is assigned to the material specified. If there is more than one Type associated with that bin, the user will be prompted to pick one from a list.

The user scans, enters, or searches for a batch number that is assigned to the material specified. The user enters the quantity they wish to adjust the material.

If the user's intent is to add one or remove one count from the total SAP believes is available, the user just enters one, not a new total quantity.



In the case of a Negative Adjustment, the maximum possible quantity is displayed. It considers plant, location, bin, and batch values if they exist. Also, the Reason code field is displayed if the SAP configuration requires it.

The **Submit** button will post the adjustment of this material to SAP and reset the application.

The arrow in the upper left corner will take the user back to the menu.

Technical Information

This lists the tables used for validations, searches and defaults by prompt.

Prompt	Table	Description
Plant	T001W	User Property "PLANT"
Mat	BAPI_MATERIAL_GET_DETAIL / MARA / MARC	NA
Locn	T320 / T001L / MARD / MCHB / MSKA / MSPR / LQUA	NA
Bin	LAGP / LQUA	NA
Type	LAGP	NA
Batch	MCHB / LQUA / MARD	NA
Qty		NA
Rsn	T156	NA
App Update	BAPI_GOODSMVT_CREATE	NA