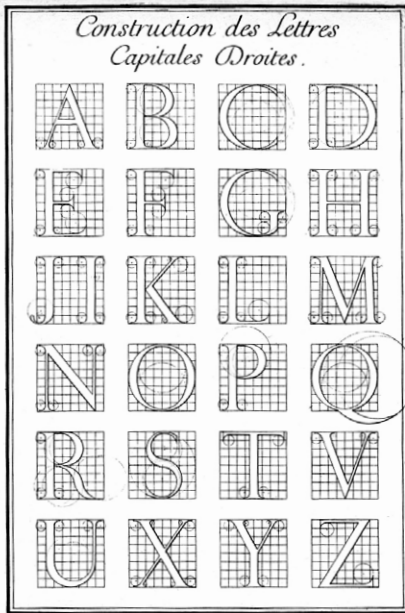
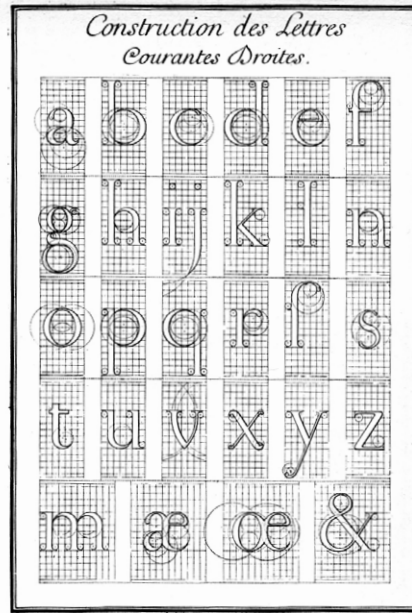


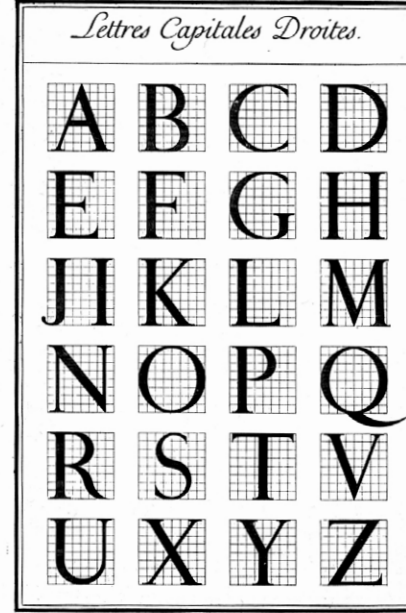
Romain du Roi. The surviving plates



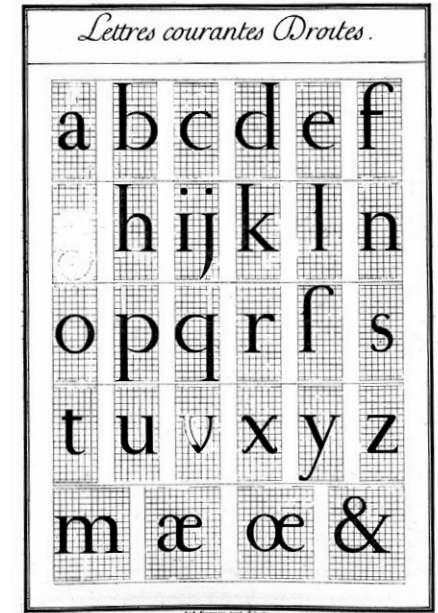
I



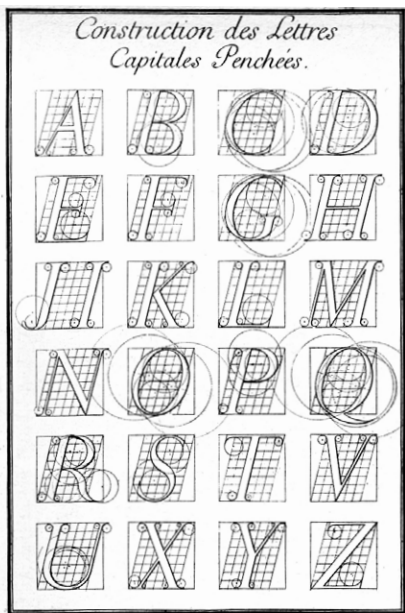
III



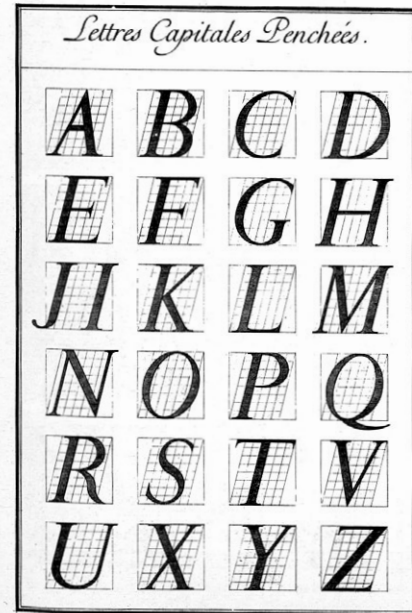
II



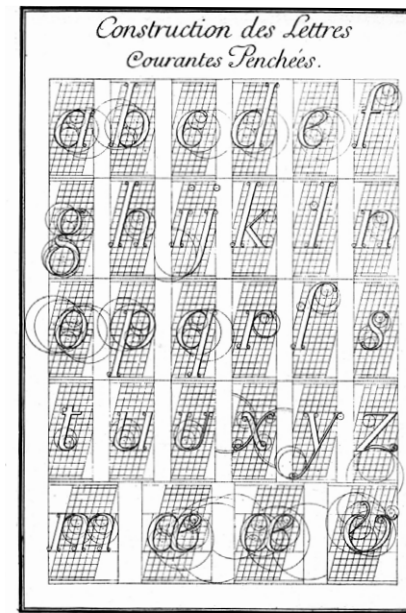
IV



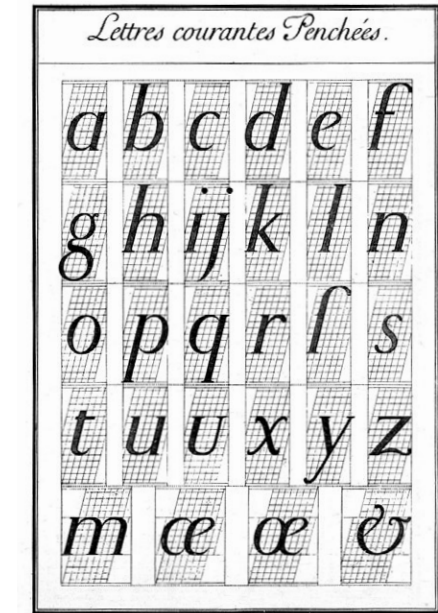
VI



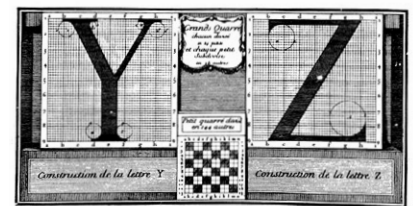
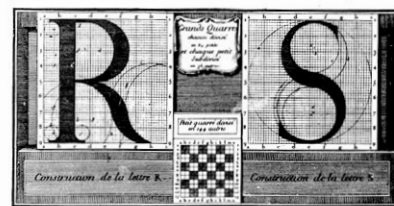
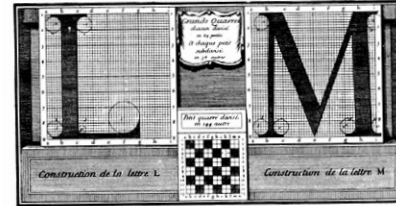
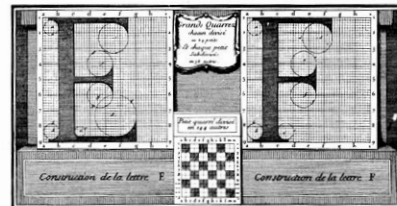
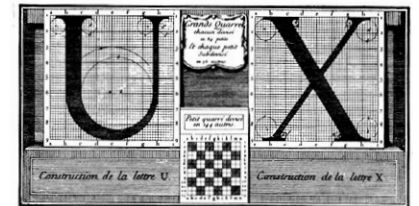
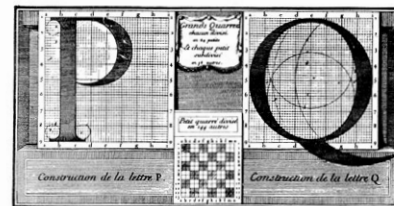
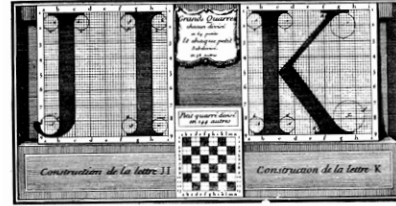
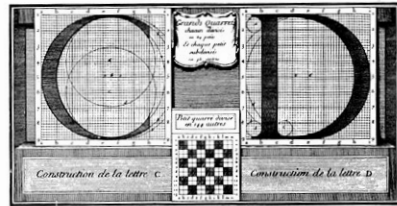
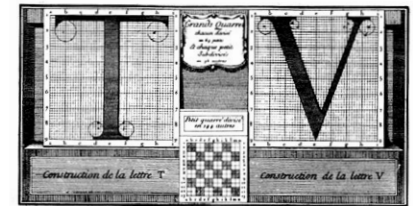
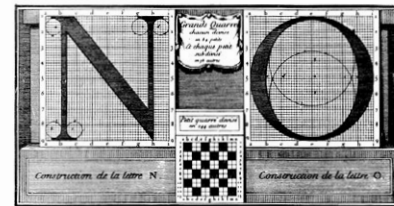
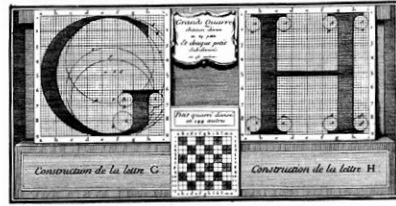
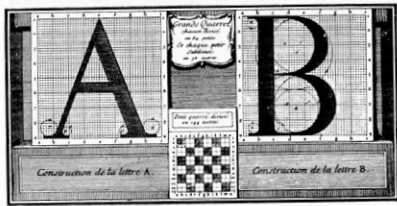
VII



VIII



IX

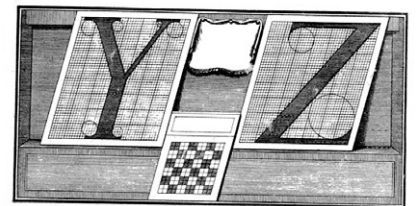
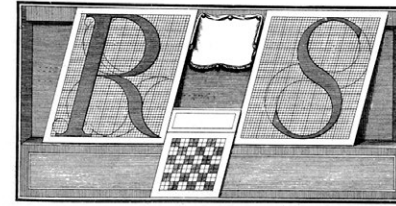
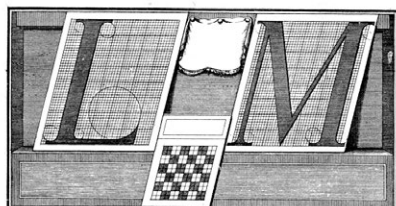
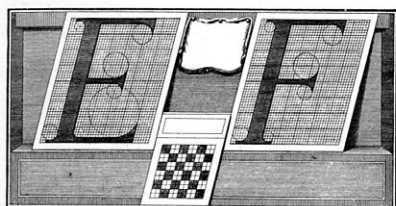
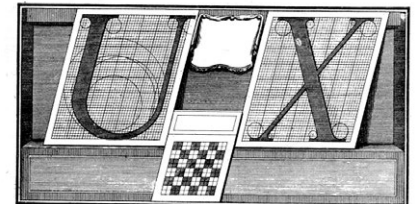
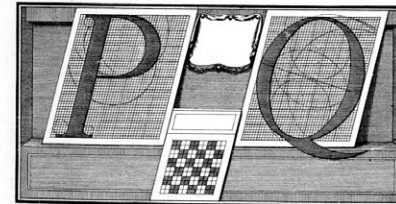
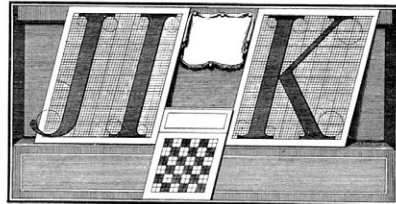
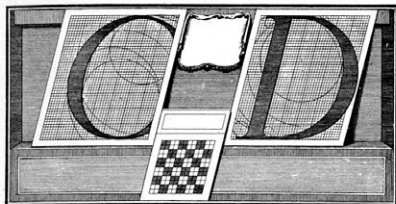
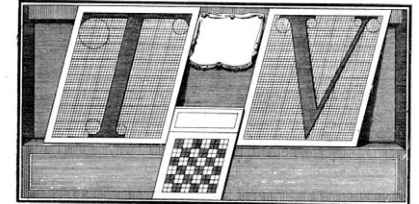
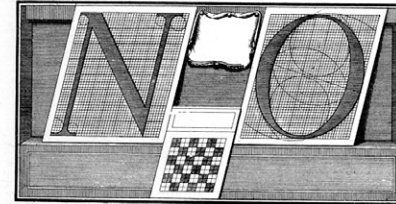
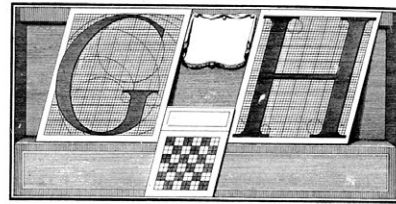
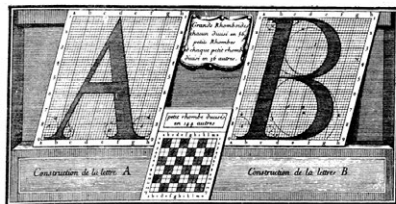


X

XI

XII

XIII



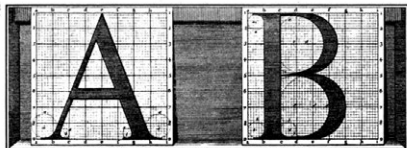
XIV

XV

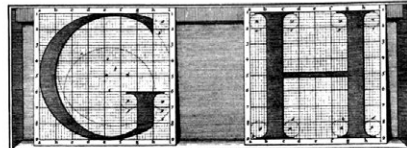
XVI

XXVII

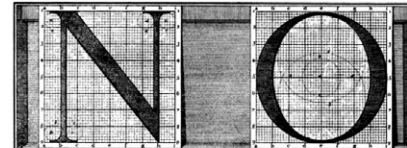
Undated and unsigned. They were engraved before 1704 and may be attributed to Simonneau



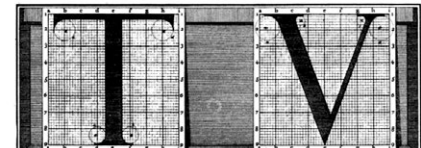
Constructions des L^{et}tres A et B.



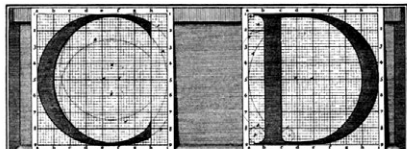
Constructions des L^{et}tres G et H.



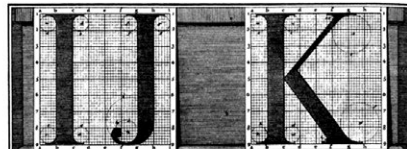
Constructions des L^{et}tres N et O.



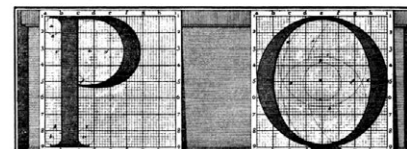
Constructions des L^{et}tres T et V.



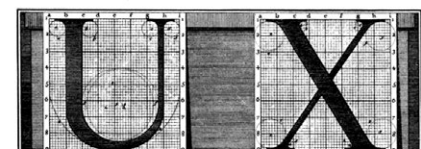
Constructions des L^{et}tres C et D.



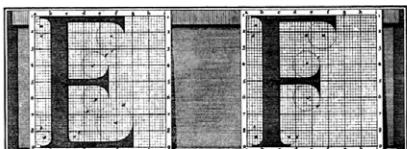
Constructions des L^{et}tres IJ et K.



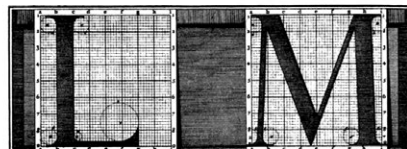
Constructions des L^{et}tres P et Q.



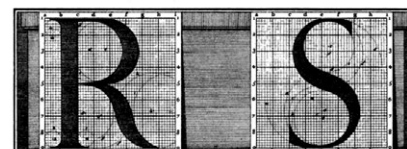
Constructions des L^{et}tres U et X.



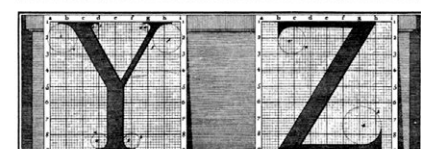
Constructions des L^{et}tres E et F.



Constructions des L^{et}tres L et M.



Constructions des L^{et}tres R et S.



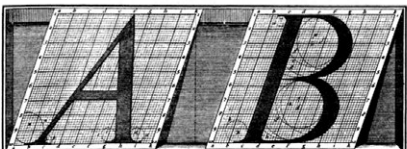
Constructions des L^{et}tres Y et Z.

XVIII

XIX

XX

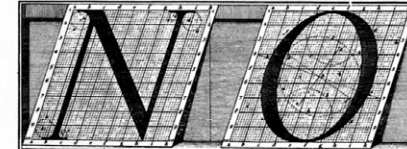
XXI



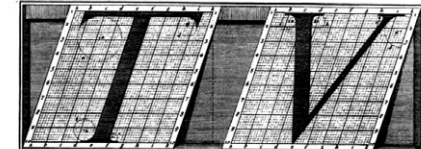
Constructions des L^{et}tres A et B.



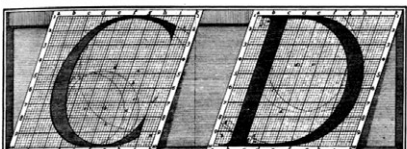
Constructions des L^{et}tres G et H.



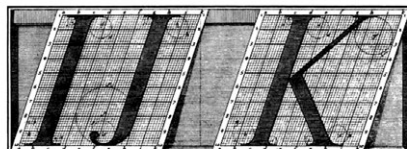
Constructions des L^{et}tres N et O.



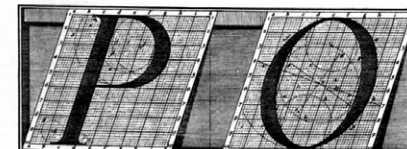
Constructions des L^{et}tres T et V.



Constructions des L^{et}tres C et D.



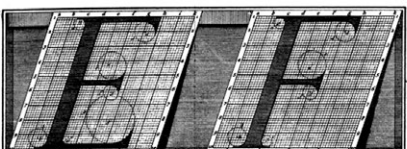
Constructions des L^{et}tres IJ et K.



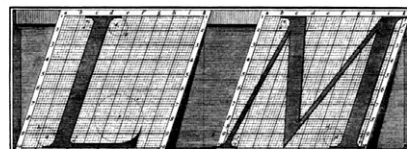
Constructions des L^{et}tres P et Q.



Constructions des L^{et}tres U et X.



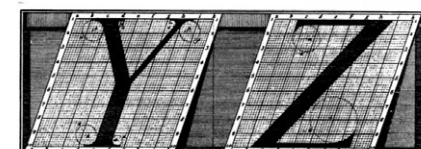
Constructions des L^{et}tres E et F.



Constructions des L^{et}tres L et M.



Constructions des L^{et}tres R et S.



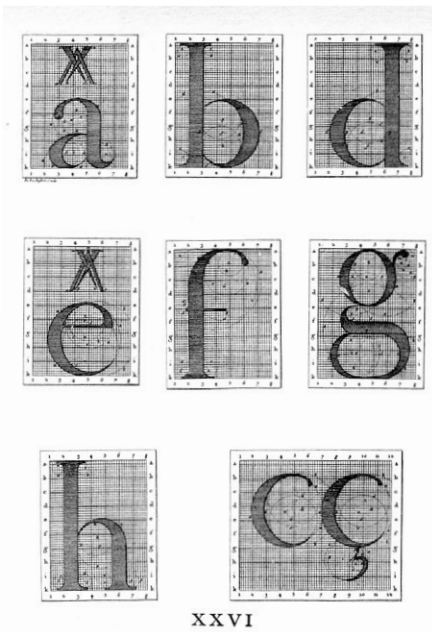
Constructions des L^{et}tres Y et Z.

XXII

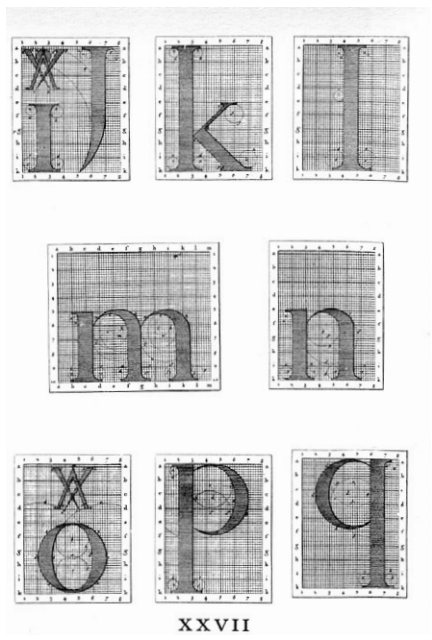
XXIII

XXIV

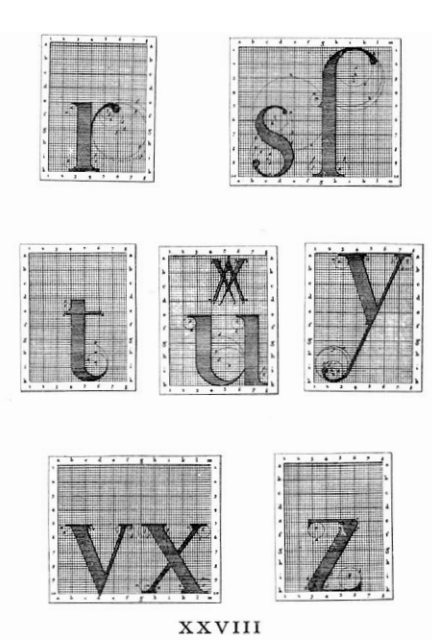
XXV



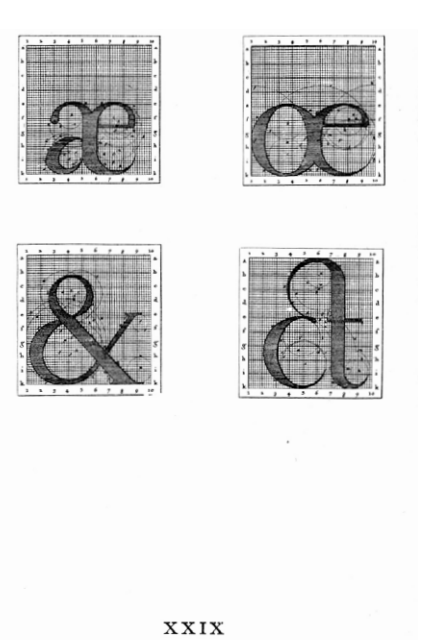
XXVI



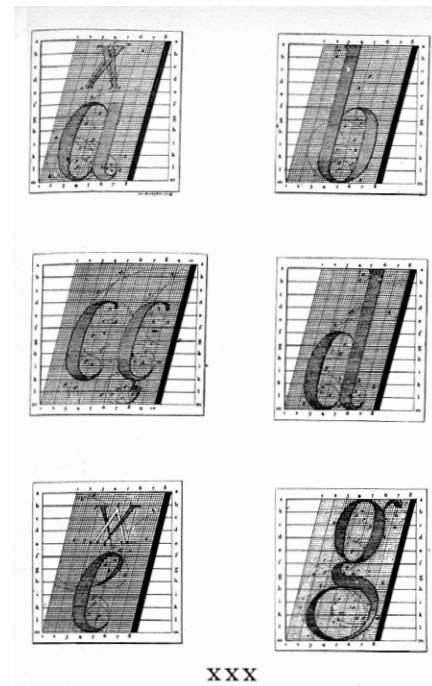
XXVII



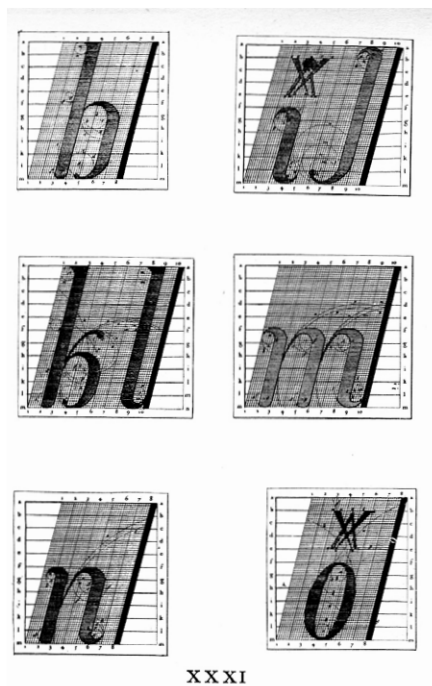
XXVIII



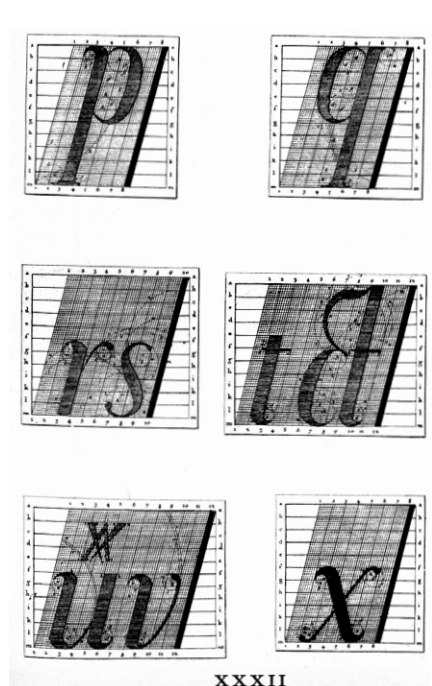
XXIX



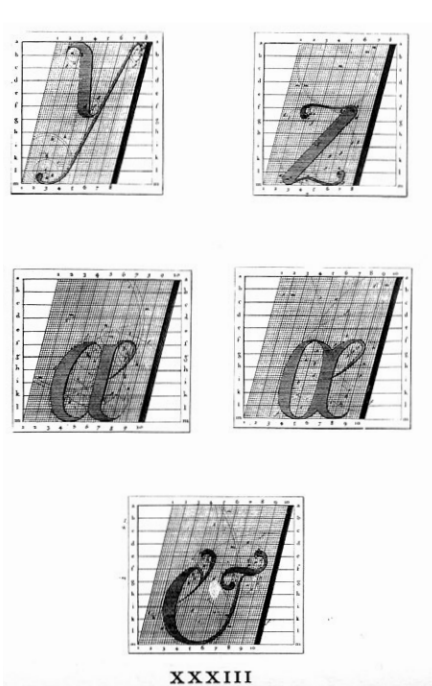
XXX



XXXI



XXXII



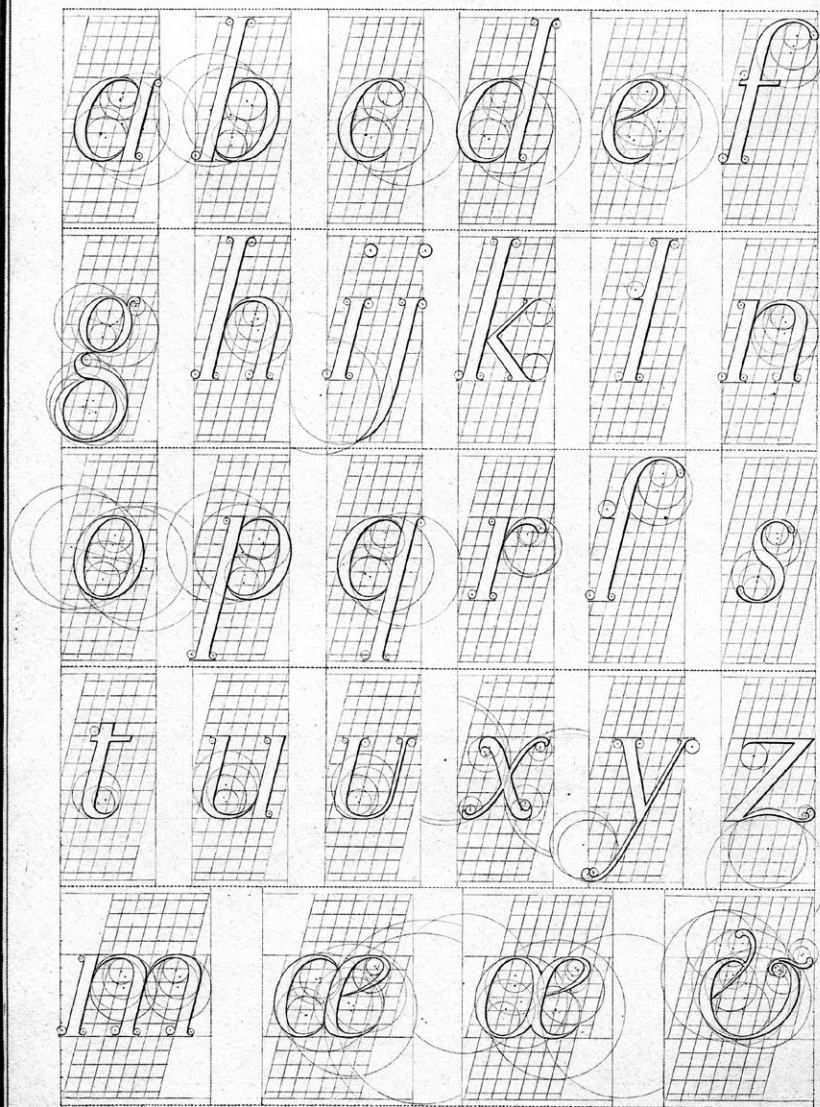
XXXIII

1.

The sloped roman

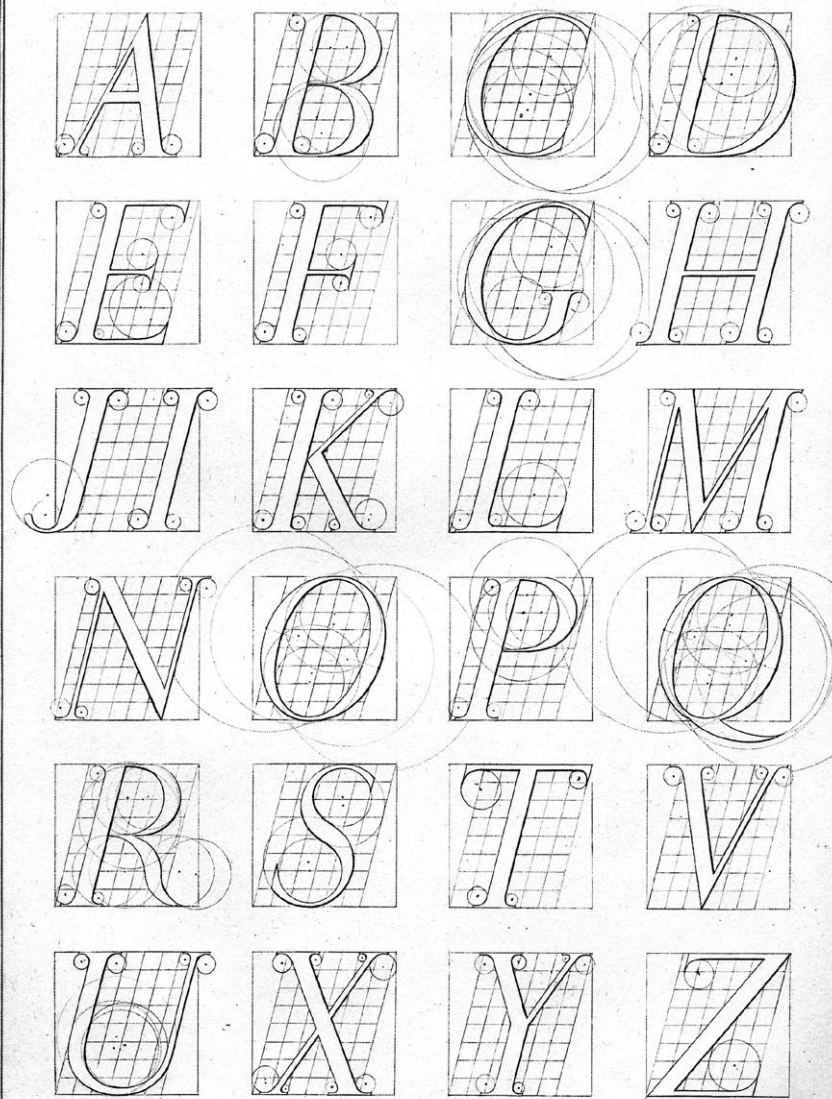
Courantes Penchées and *Capitales Penchées*
from the 1495 plates

*Construction des Lettres
Courantes Penchées.*

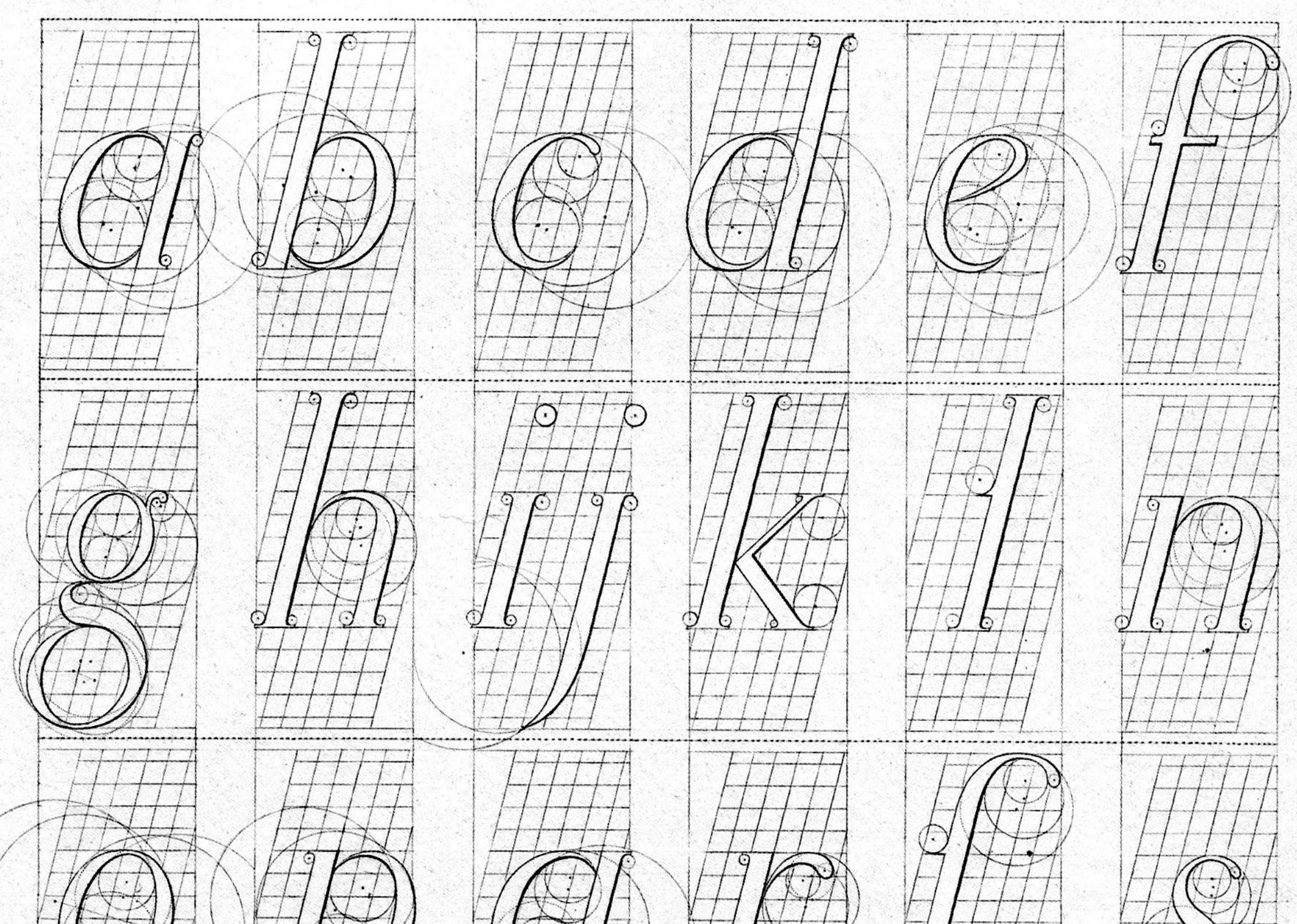


Ludovicus Simonneau Aurel. fecit 1695.

*Construction des Lettres
Capitales Penchées.*



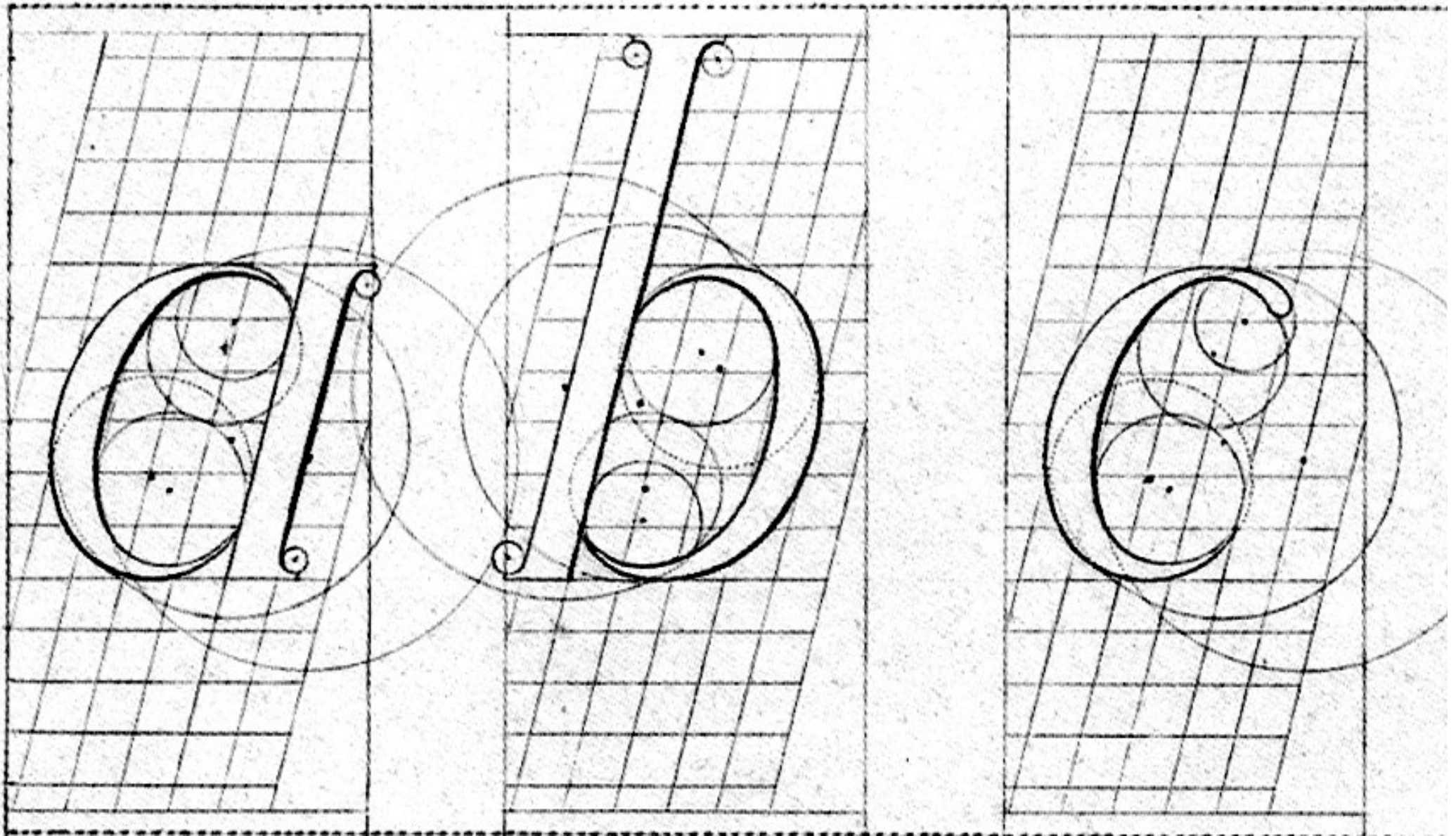
Ludovicus Simonneau Aurel. fecit 1695.



admirable & d'un travail re-
cherché; c'est une pièce de
cabinet que l'on montre aux
curieux, qui n'est pas d'u-
sage, qui ne sert pas plus à
la guerre & à la chasse qu'à

eri conjurationem tuam
xima, quid superiore no-
, quos convocaveris, quid
a nostrum ignorare arbi-

US CICEERO ARPINAS



The sloped roman (1495)

2.

The typeface

Gros romain

Granjean, 1696–99

MEDAILLES

SUR

LES PRINCIPAUX EVENEMENTS

DU REGNE

DE

LOUIS LE GRAND,

AVEC

DES EXPLICATIONS HISTORIQUES.

Par l'Académie Royale des Médailles & des Inscriptions.



A PARIS,
DE L'IMPRIMERIE ROYALE.

M. DCCII.

Table 4. The *romain du roi*: punchcutters and dates

This table is intended as an outline of the making of the different sizes of the *romain du roi*

1	2	3	4	5	6	7	8	9
1	4.25	4.2	4.1	4 (4.25)	Perle	Luce ^a	1737–9	1740
2	5	4.9	5.3	5 (5.3)	Sédanoise	Alexandre	1726–8	1728 ^b
3	6	6.0	6.25	6 (6.4)	Nompareille	Grandjean	1709–10	
4	7	6.9	7.45	7 (7.45)	Mignonne	Grandjean	1707–8	
5		8.5	8.2	8 (8.5)	Petit Texte	Grandjean	1706–7	1707
5½		9.6	9.3	9 (9.6)	Petit Romain Alexandre	Alexandre		
6	10	10.0	10.5	10 (10.6)	Petit Romain Grandjean	Grandjean	1705–6	1705
6½		10.6	11.4	11 (11.7)	Cicero Alexandre	Alexandre ^c	1712–16	
7	12	12.0	12.45	12 (12.8)	Cicero Grandjean	Grandjean	1699–1703	
7½		12.8	13.6	13 (13.8)	St Augustin de l'Académie	Grandjean	1712	
8	14	13.8	14.6	14 (14.9)	St Augustin Tournefort	Grandjean	1700–2	
8½		15.2	15.7	15 (15.7)	Gros Romain	Alexandre ^d	1729	
9	17	16.7	16.75	16 (17.0)	Gros Romain	Grandjean	1696–1701	1699
9½		18.6	18.9	18 (19.15)	Petit Parangon	Alexandre		
10	20	19.6	20.7	20 (21.3)	Petit Parangon	Grandjean	1701–2	
11	24	23.9	25.3	24 (25.5)	Gros Parangon	Grandjean	1704	1704
12	28	27.3	30.8	28 (29.8)	Petit Canon	Grandjean	1704–5	
13	34	33.7	33.9	32 (34.0)	Gros Canon	Grandjean	1705–6	
14	40	38.9	41.2	38 (40.4)	Double Canon	Grandjean	1710–11	
15	48	48.5	49.5	48 (51.1)	Triple Canon	Grandjean ^e		
16	56	55.8	57.6	56 (59.6)	Quadruple Canon	Luce	c. 1745 ^f	

16
LE GROS ROMAIN GRANDJEAN.
NEUVIÈME ALPHABET.

MON nom par la victoire est si bien affermi,
Qu'on me croit dans la paix un lion endormi :
Mon réveil incertain, du monde fait l'étude,
Mon repos en tous lieux jette l'inquiétude,
Et tandis qu'en ma Cour les aimables loisirs,
Ménagent l'heureux choix des jeux & des plaisirs,
Pour envoyer l'effroi sous l'un & l'autre pole,
Je n'ai qu'à faire un pas & hauffer la parole.
CORNEILLE.

LE GROS ROMAIN GRANDJEAN.
NEUVIÈME ALPHABET.

L'ARGENT, l'argent, dit-on, sans lui tout est stérile.
La vertu sans l'argent n'est qu'un meuble inutile.
L'argent en honnête homme érige un scélérat.
L'argent seul au Palais peut faire un Magistrat.
Qu'importe qu'en tous lieux on me traite d'infame,
Dit ce fourbe sans foi, sans honneur & sans ame ;
Dans mon coffre tout plein de rares qualités,
J'ai cent mille vertus en Louis bien comptés.
DESPRÉAUX.

40
DOUBLE GROS CANON. QUATORZIÈME ALPHABET.

SA voix redoutable
Trouble les enfers.
Un bruit formidable
Gronde dans les airs.

SORTEZ de vos retraites,
Accourez, Dieux des bois ;
Au son de nos musettes
Accordez vos hautbois.

Gravé par M. GRANDJEAN.

LA RÉFORME

DE LA

TYPOGRAPHIE ROYALE

SOUS LOUIS XIV

LE GRANDJEAN

L'Académie, en rendant compte officiellement des études de ses mécaniciens relatives à la gravure des caractères, avait annoncé que le résultat de leurs travaux pourrait être apprécié dans les nouveaux types utilisés pour l'impression des *Médailles des principaux événements du règne de Louis le Grand avec des explications historiques par l'Académie des médailles & inscriptions*. Ce livre tout à la gloire de Sa Majesté, était le couronnement d'une série de luxueuses publications connues sous le nom de *Cabinet du Roi*²³. Rien ne devait être épargné pour un tel ouvrage. Plusieurs médailles furent spécialement gravées & frappées par Varin & les meilleurs artistes de la Monnaie. Coypel, Sébastien Le Clerc, Ede-

ves sur cuivre par Louis Simonneau & plus tard par Rochefort. Ce travail prit un temps considérable; les premiers cuivres portent la date de 1695, les derniers ont été achevés en 1718. De ces cuivres gravés pour l'«Assemblée des arts» il ne fut tiré que quelques exemplaires au cours du XVIII^e siècle, mais les spécialistes en prirent connaissance & Simon-Pierre Fournier, dans son premier volume du *Manuel typographique* paru en 1764, se livrait à une brillante critique de ces gravures :

«En 1692, l'Académie des sciences entreprit la description des arts, dont la typographie devait être le premier, comme étant celui «qui conserve tous les autres». La description de cet art fut en effet commencée dès 1693. Malheureusement il n'y avait

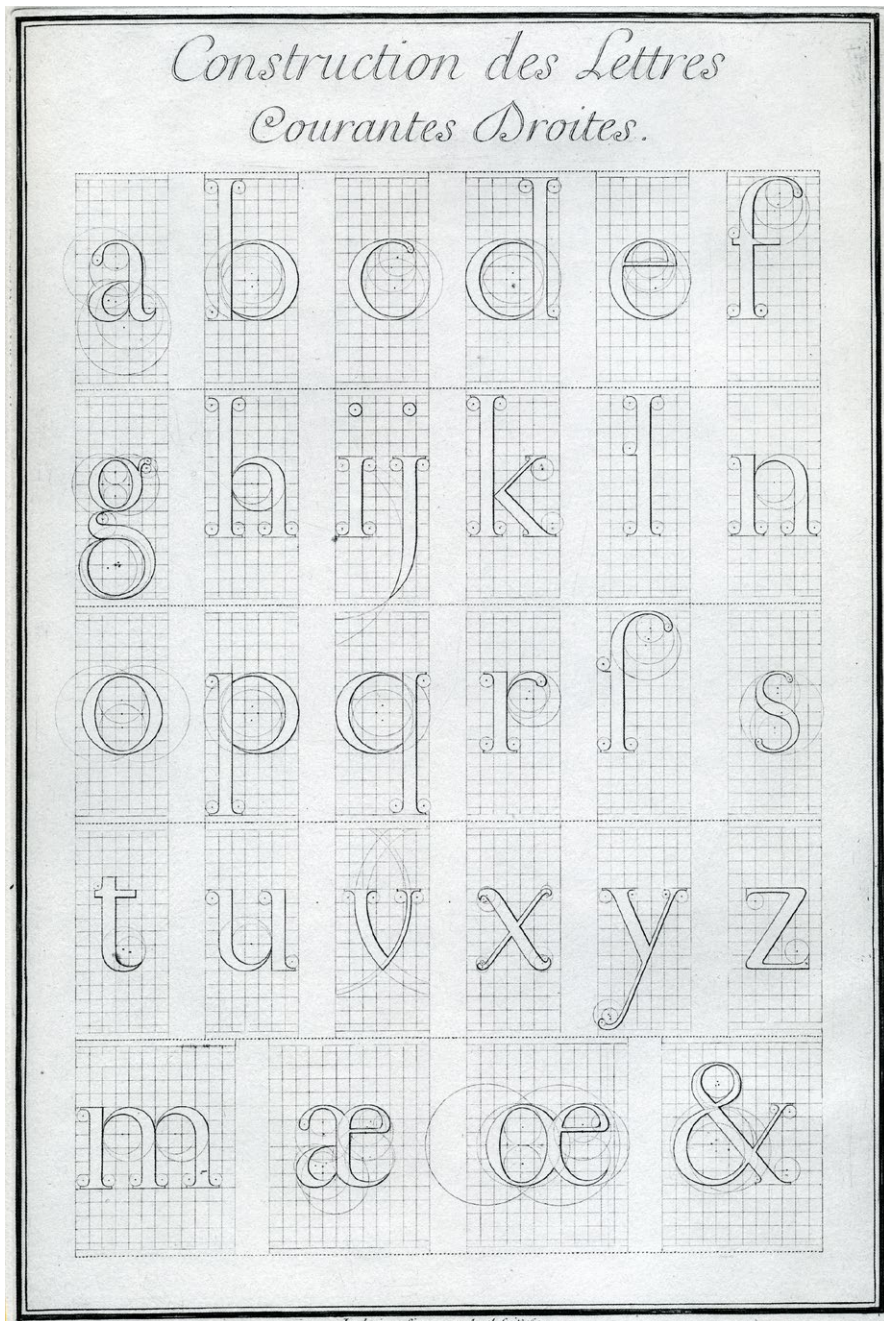
L'Académie, en rendant
lement des études de ses
tives à la gravure des
annoncé que le résultat
pourrait être apprécié d

*net du Roi*²³. Rien ne de
pour un tel ouvrage. P
furent spécialement grave
Varin & les meilleurs ar
naie. Coypel, Sébastien

types utilisés pour l'impress
dailles des principaux événements
Louis le Grand avec des explicat
par l'Académie des médailles & i
livre tout à la gloire de Sa Ma
couronnement d'une série

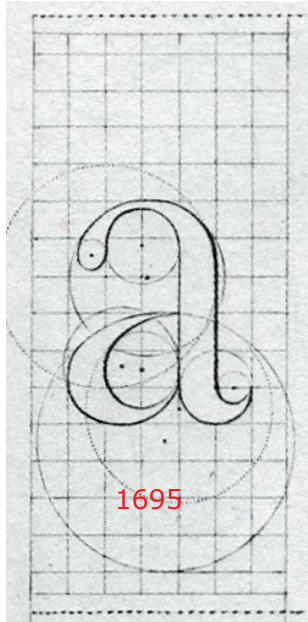
3.

Comparing the first plates (1695)
with the typeface (1696–99)

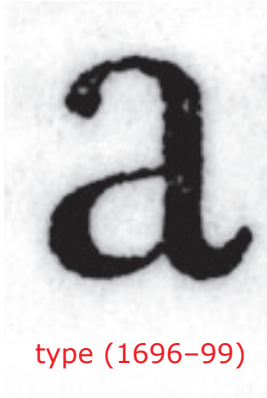


lement des ét
tives à la g
annoncé que
pourrait être
types utilisés

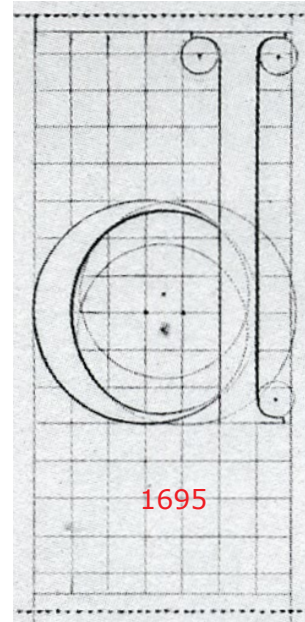
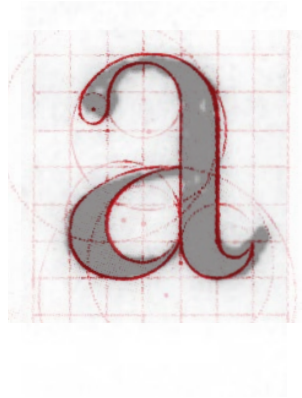
Comparing the first plates (1695) with the typeface (1696–99)



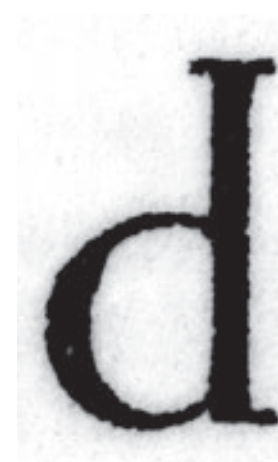
1695



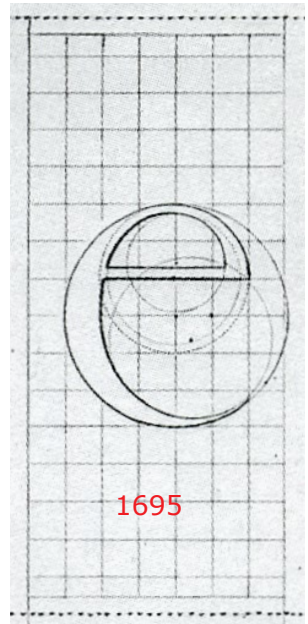
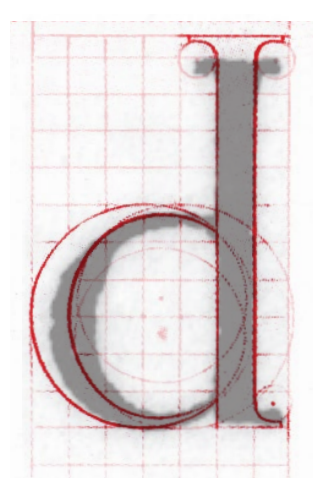
type (1696-99)



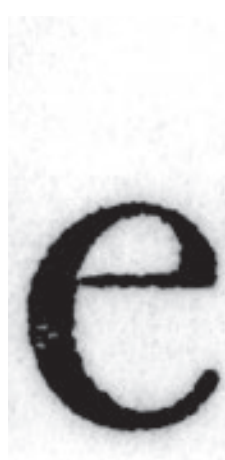
1695



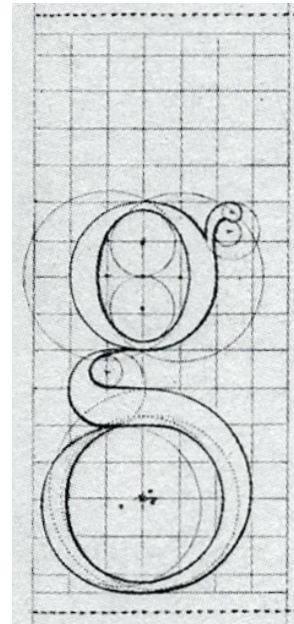
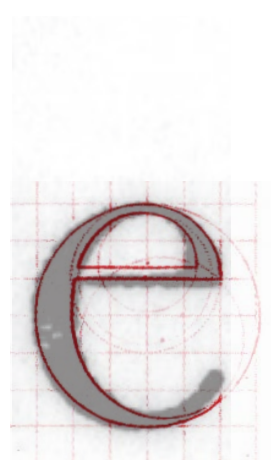
type (1696-99)



1695



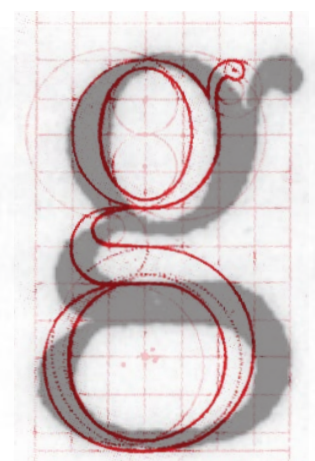
type (1696-99)



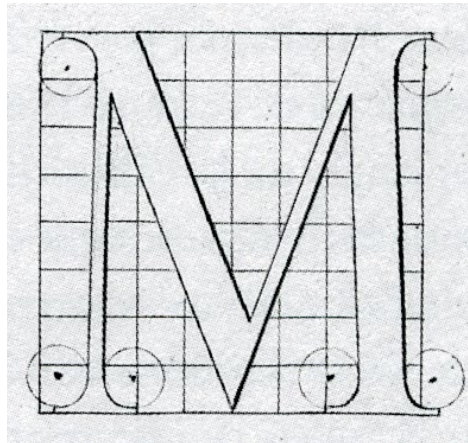
1695



type (1696-99)



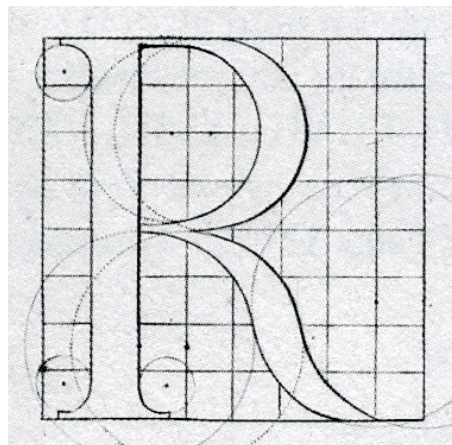
Comparing the first plates (1695) with the typeface (1696-1701)



1695



type (1696-99)



1695



type (1696-99)

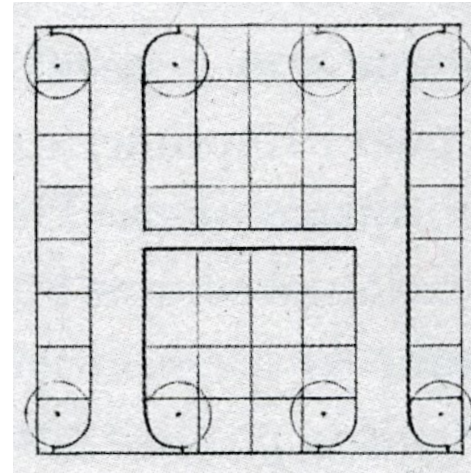
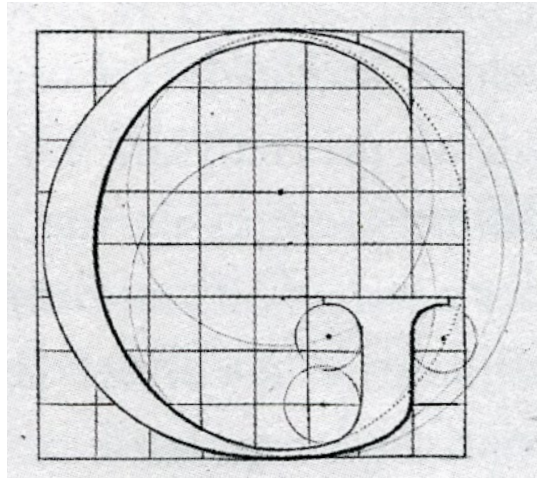


4.

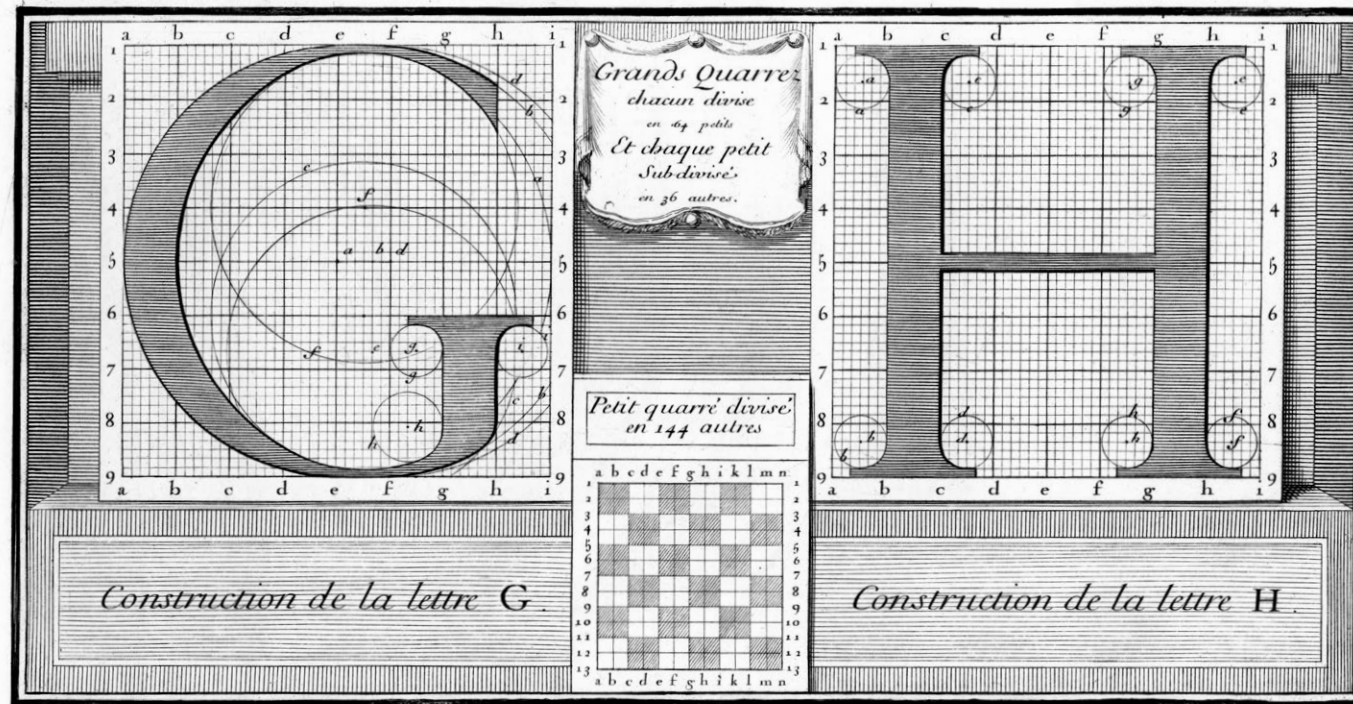
Improvement on the grid

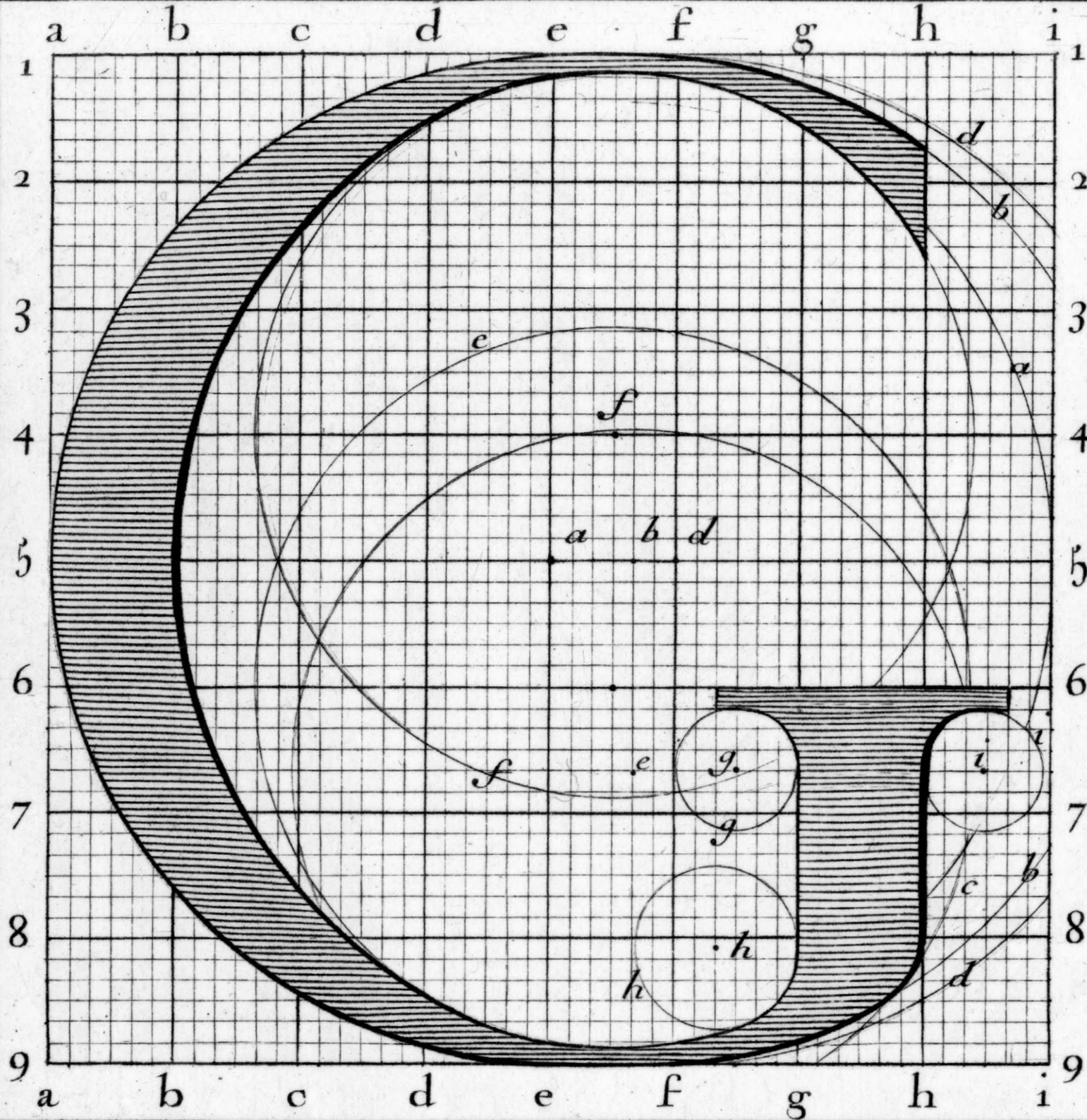
1695 — 1704

1695



1704

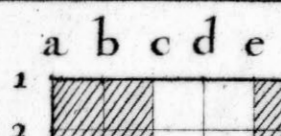




Grande
chaque
en
Et cha
Sub
en 3

(A large area of horizontal hatching lines)

Petit qu
en 1

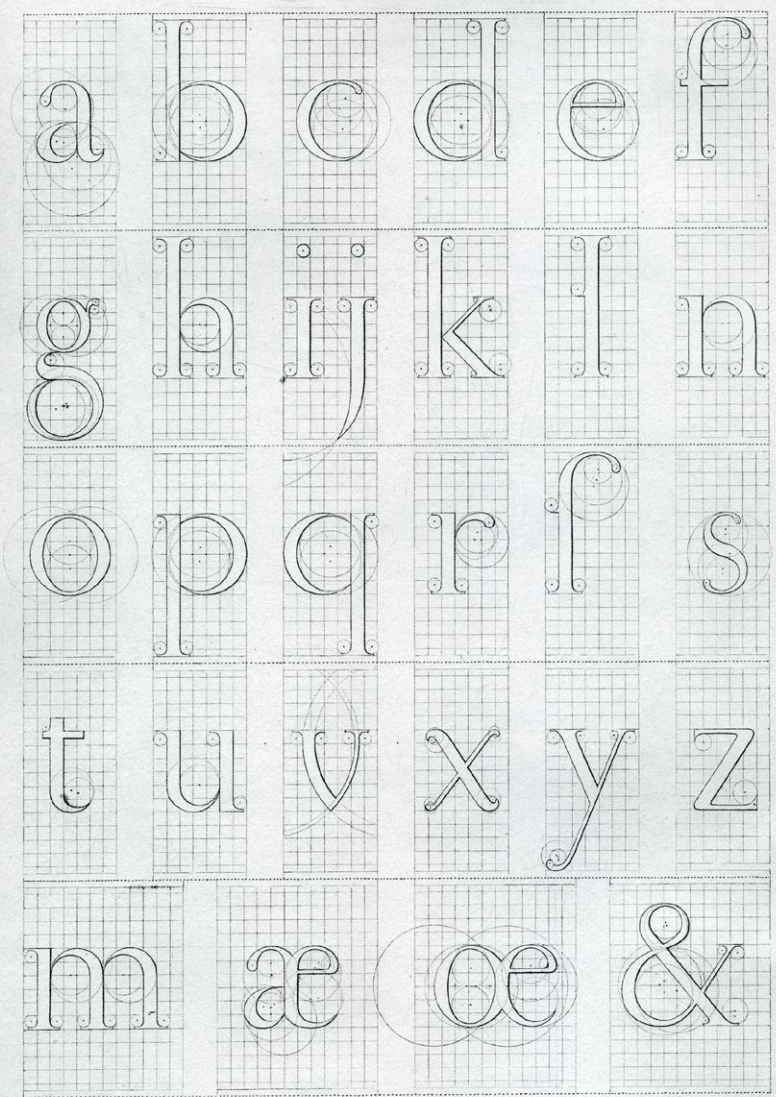


5.

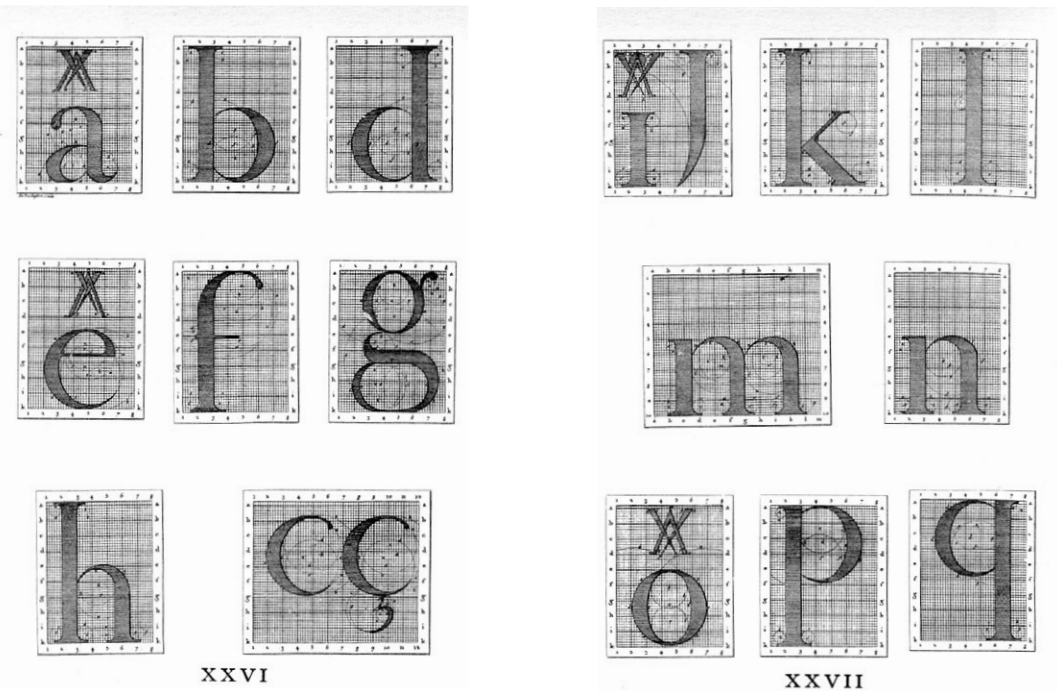
Comparing the roman lowercase

1695 Simonneau plates
with Rochefort plates

*Construction des Lettres
Courantes Droites.*

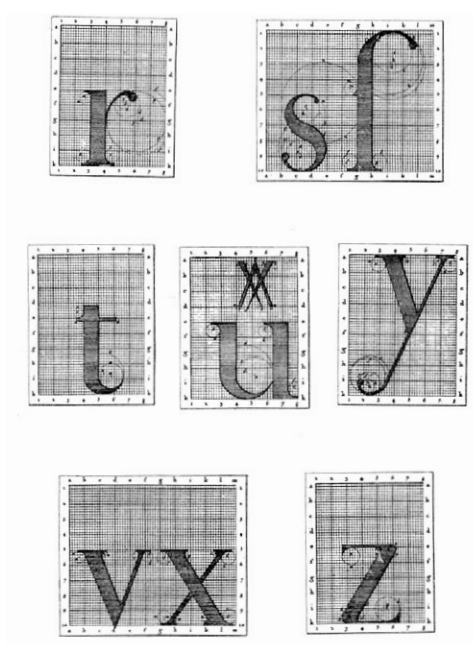


L'Escur - Simonneau Aurel. feil. 1695.



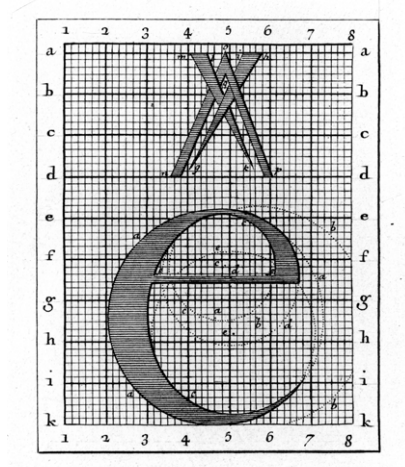
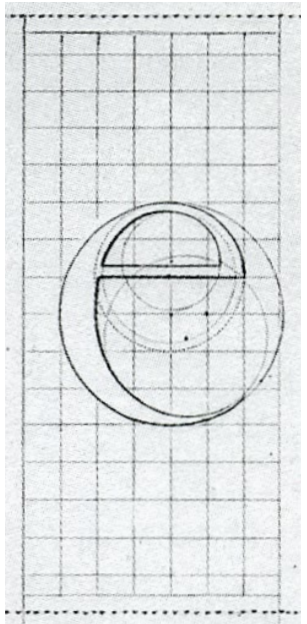
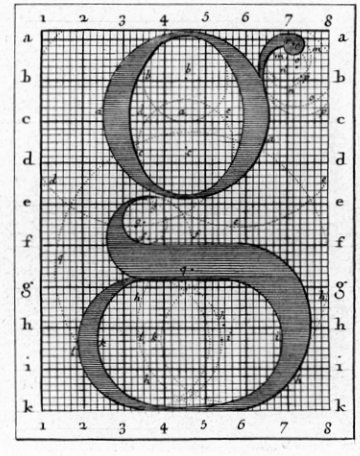
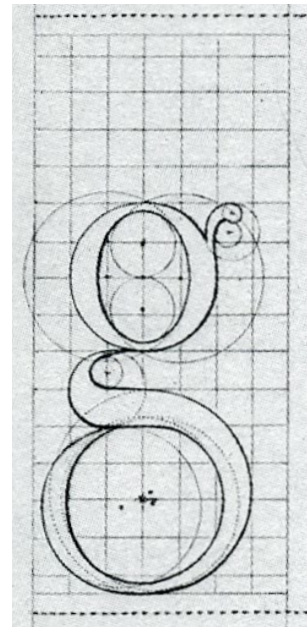
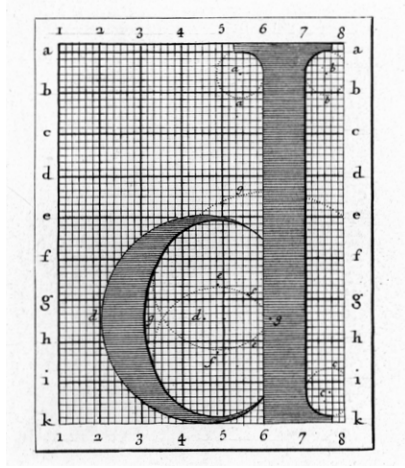
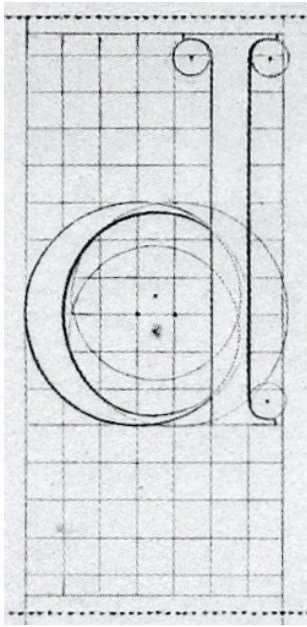
XXVI

XXVII



XXVIII

Comparing the 1695 Simonneau lowercase with Rochefort lowercase



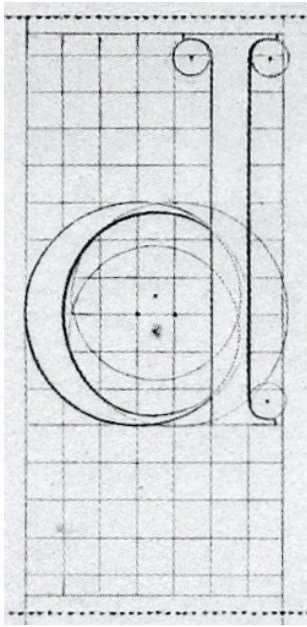
1695

Rochefort

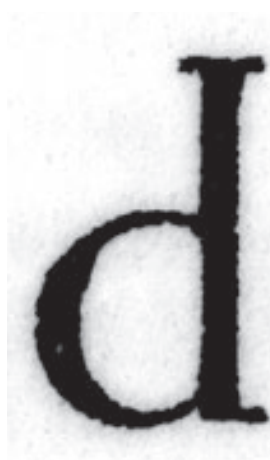
1695

Rochefort

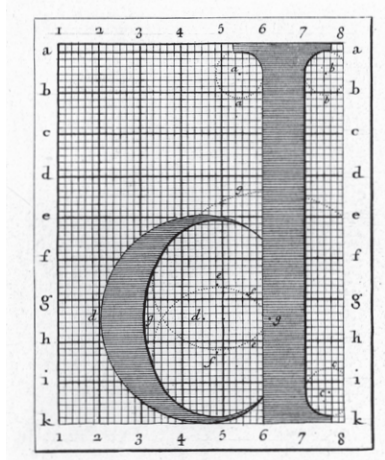
Comparing the 1695 Simonneau lowercase with Rochefort lowercase



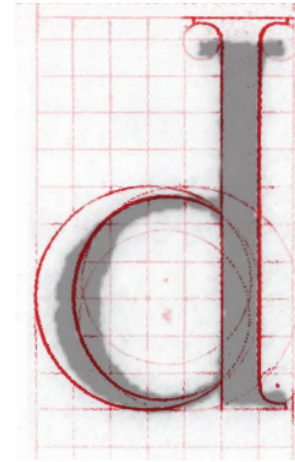
1695



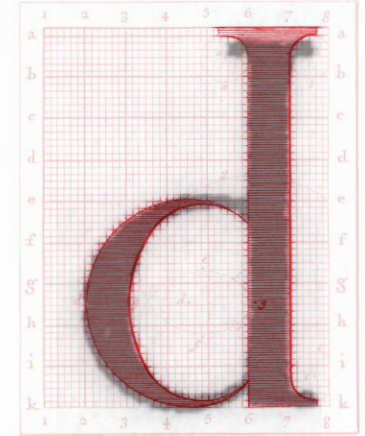
type (1696-99)



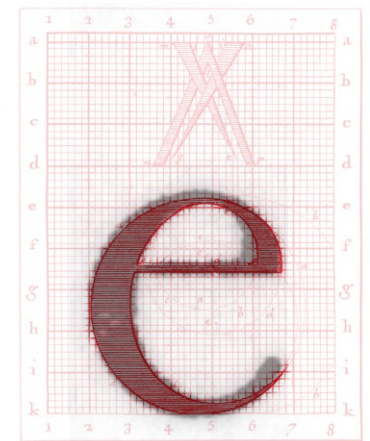
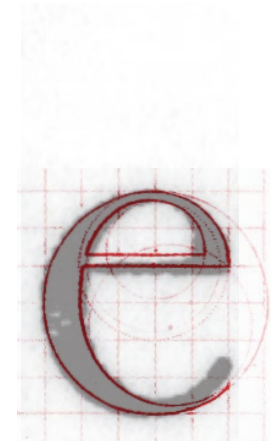
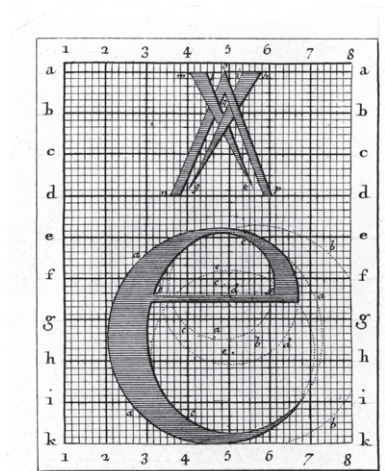
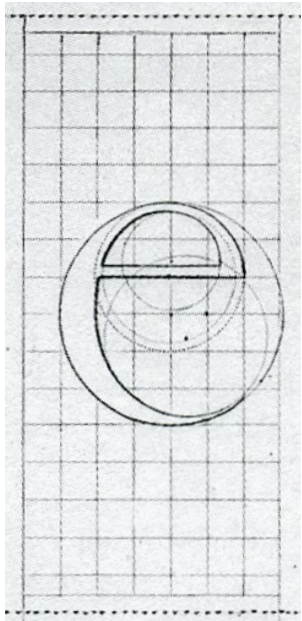
Rocheport

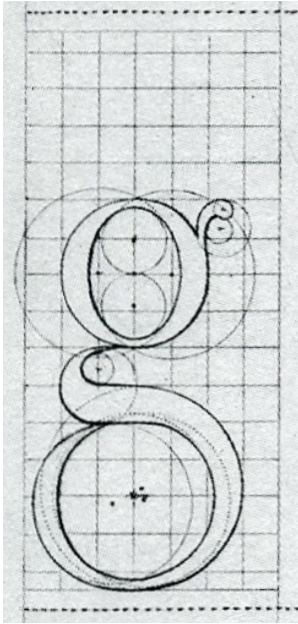


Rocheport / type



Rocheport / type

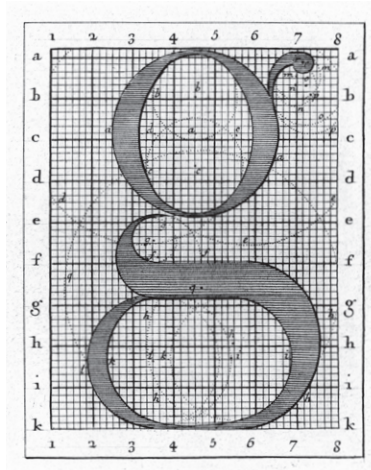




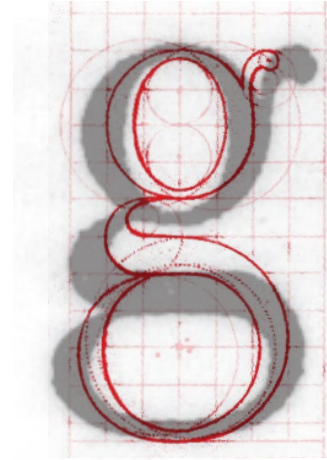
1695



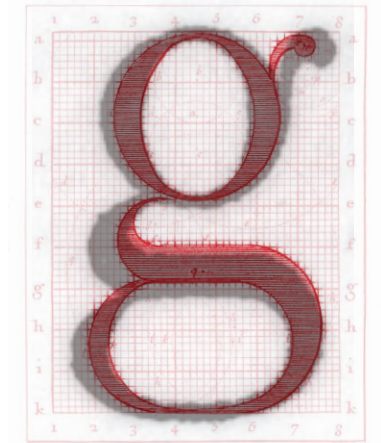
type (1696-99)



Rochefort



Rochefort / type



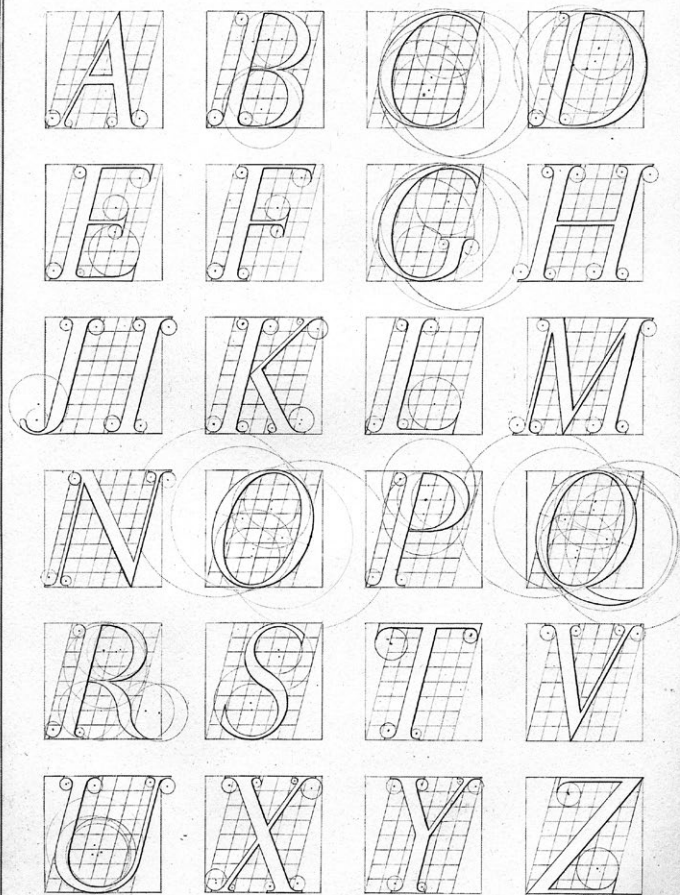
Rochefort / type

6.

Comparing the italic uppercase

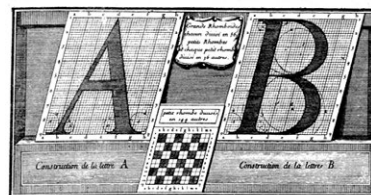
1695 – 1704 – 1716

*Construction des Lettres
Capitales Penchées.*

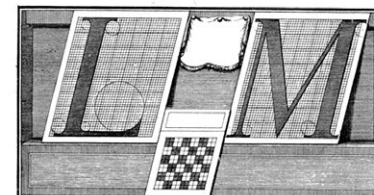
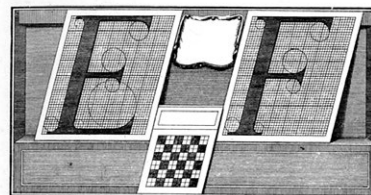
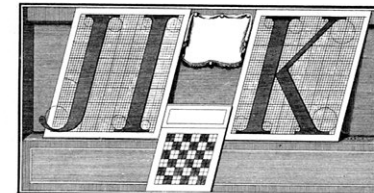
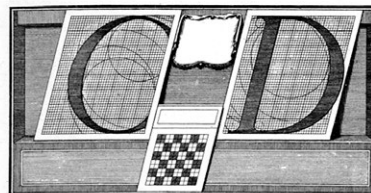
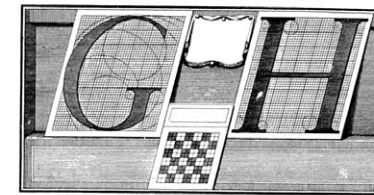


Lecteur Simonneau Aurd. 1704.

1695

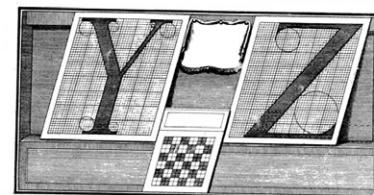
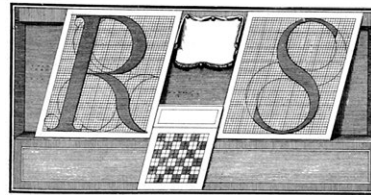
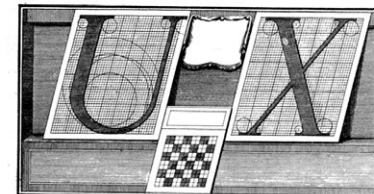
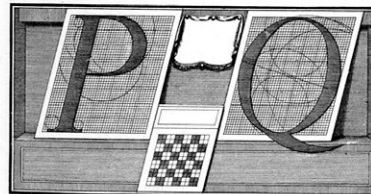
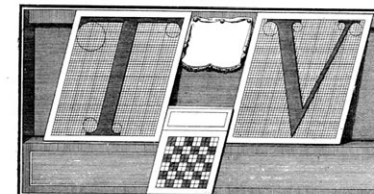
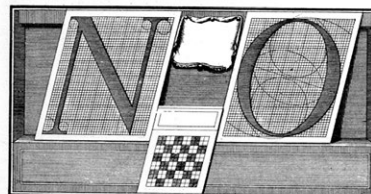


Construction de la Lettre A Construction de la Lettre B



XIV

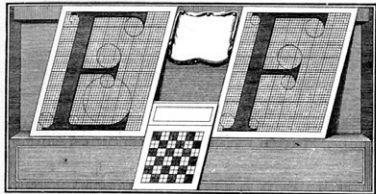
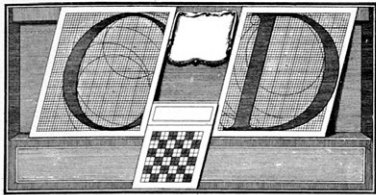
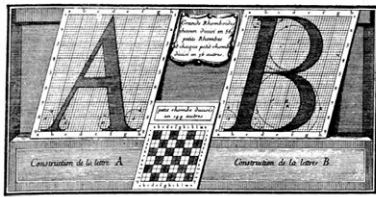
XV



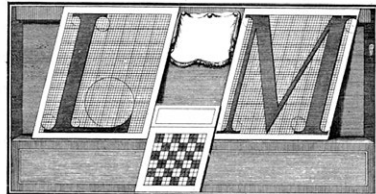
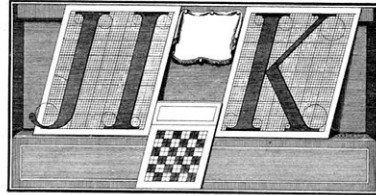
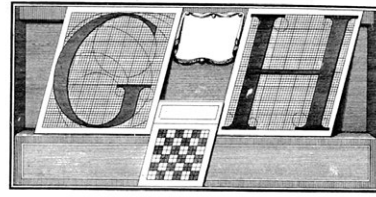
XVI

XXVII

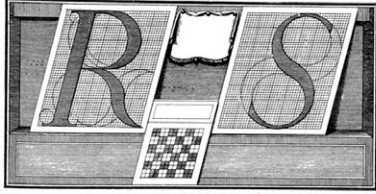
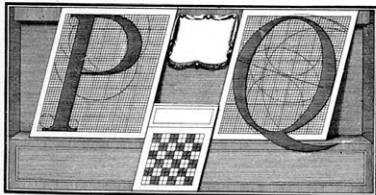
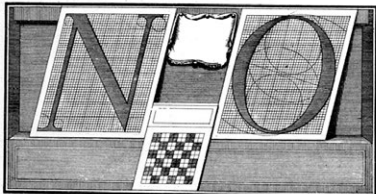
1704



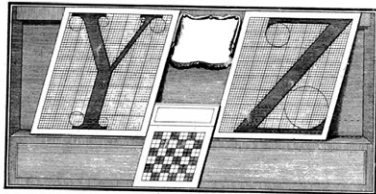
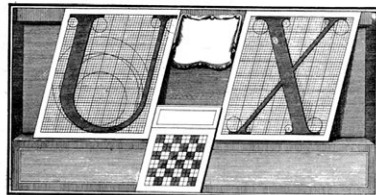
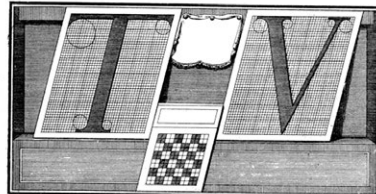
XIV



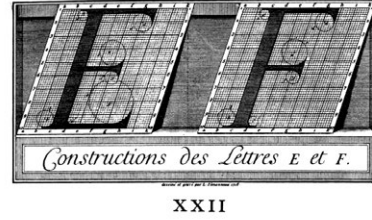
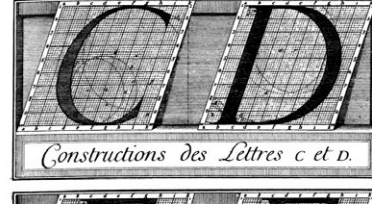
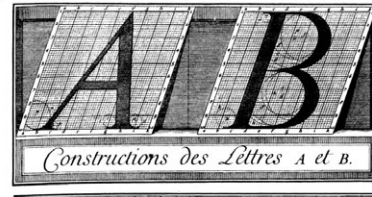
XV



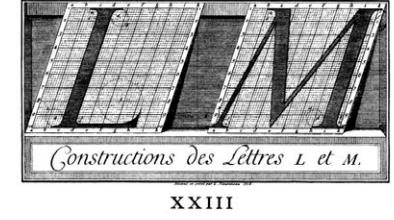
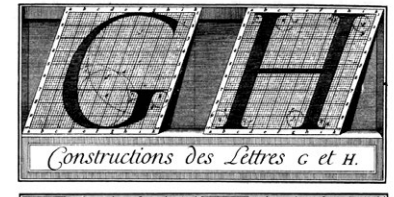
XVI



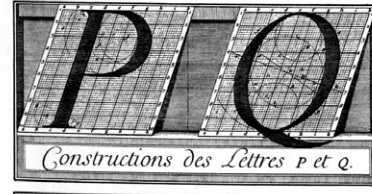
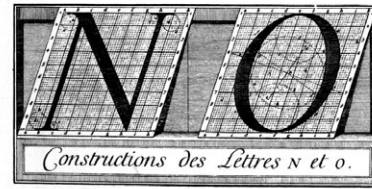
XXVII



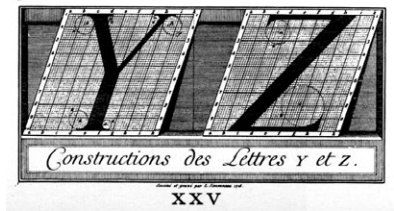
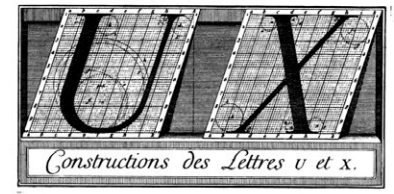
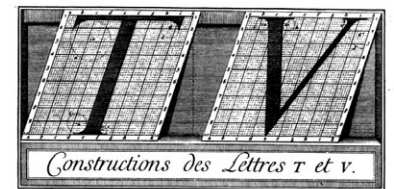
XXII



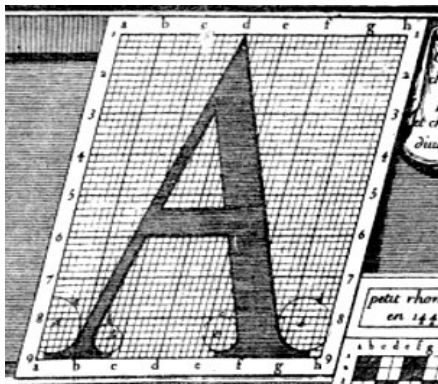
XXIII



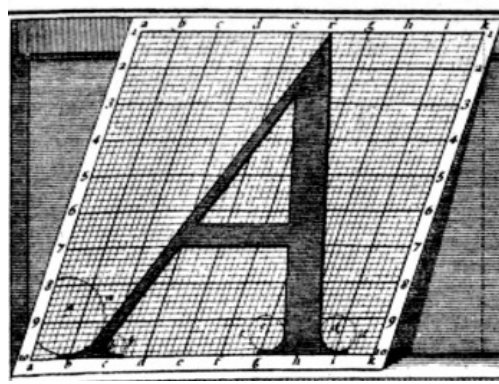
XXIV



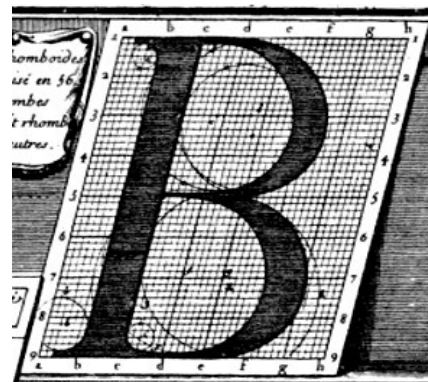
XXV



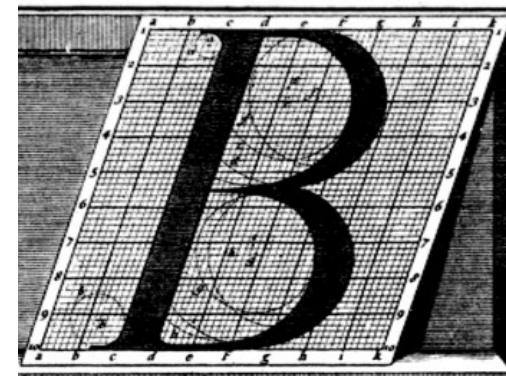
1704



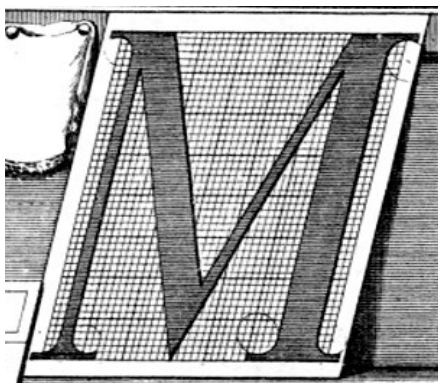
1716



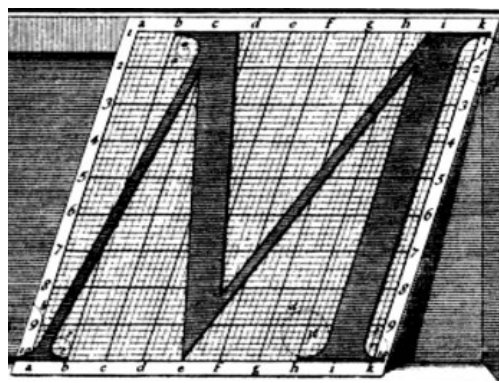
1704



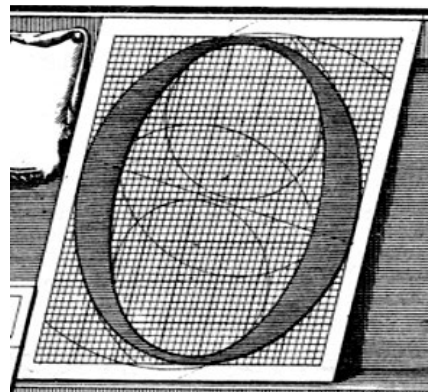
1716



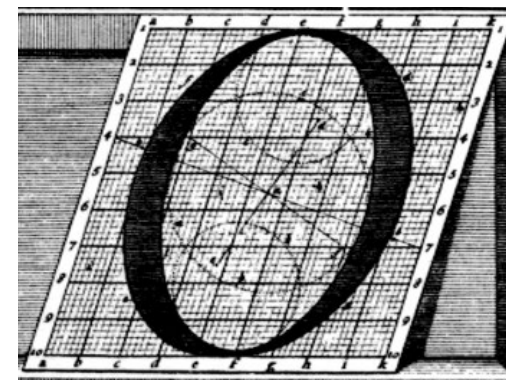
1704



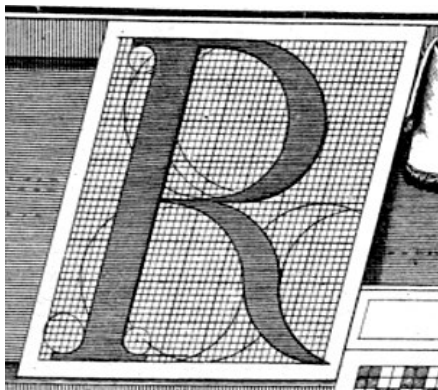
1716



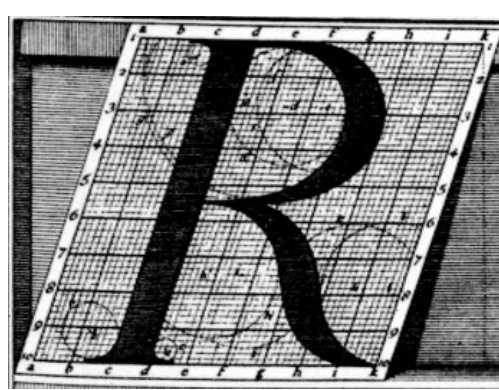
1704



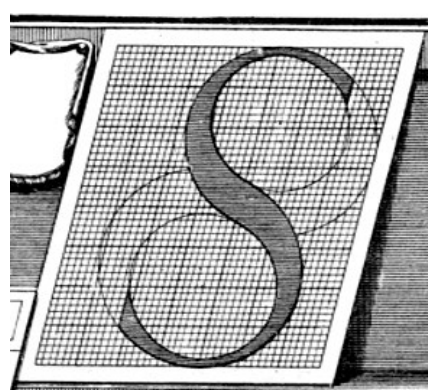
1716



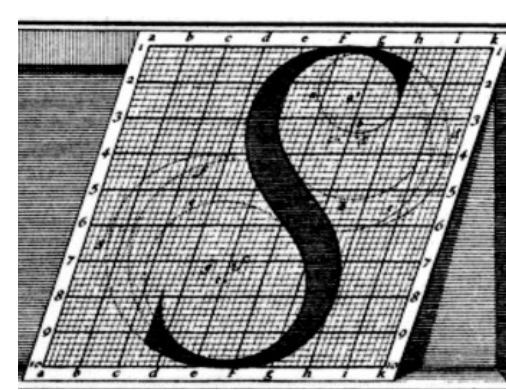
1704



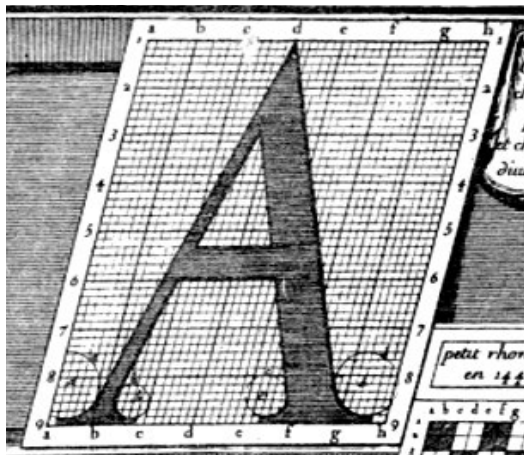
1716



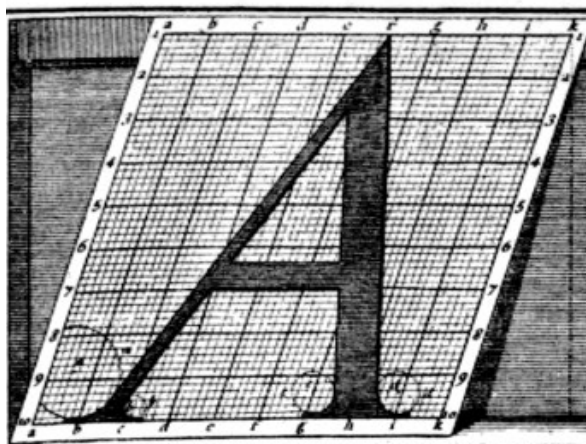
1704



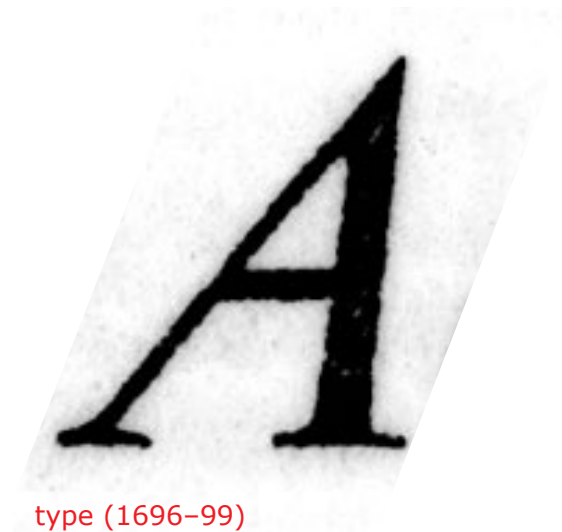
1716



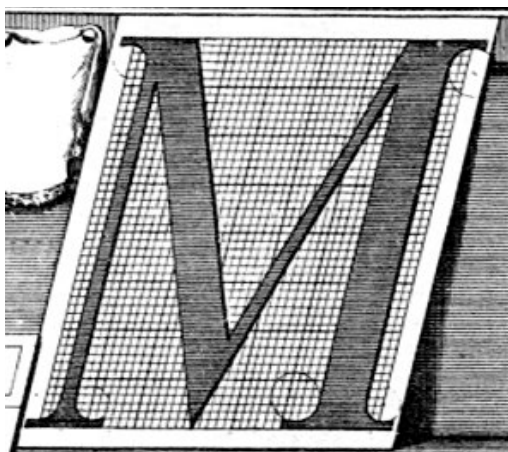
1704



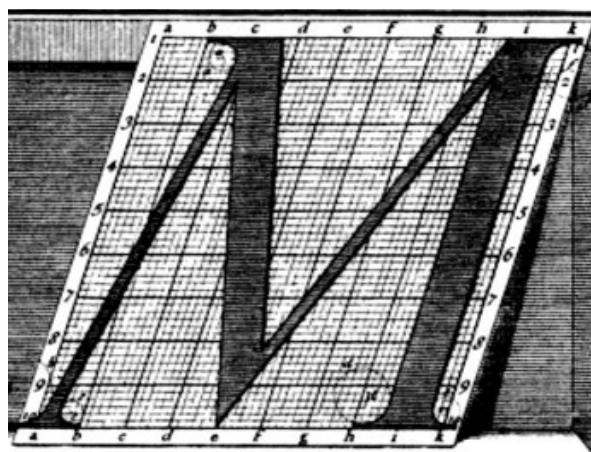
1716



type (1696-99)



1704



1716



type (1696-99)

