



RICHLAND COUNTY  
FOUNDATION

2020 ANNUAL REPORT

 **FESTERING**  
**GOOD** **NURTURING**  
**LIVES FOR**  
**75 YEARS**

# Letter from the President and Chairwoman



**As the pandemic upset the norms of everyday life**, community foundations around the country reacted in unprecedented ways to address the needs of their most vulnerable populations. In Richland County, philanthropic and federal dollars quickly infused much needed funding to nonprofit agencies serving the health and human service sector. A second wave of funding followed to assist nonprofits in the arts and culture sector, which saw revenues decimated by the loss of ticket sales and restricted access.

Through the collaborative effort of donors, government officials and community organizations, \$743,902 was granted through the Foundation's Covid-19 Rapid Response Initiative to address emerging needs. The philanthropic spirit of our community once again shined brightly.

"Fostering Good" was the slogan we wanted to weave throughout a year-long celebration of the Foundation's 75th Anniversary to recognize donors and past Trustees. Like most organizations, we had to pivot and make new plans. We embraced the spirit of Anna Scattergood and the Humane Society she created to provide financial assistance to indigent women and children and ultimately served as the inspiration for seven local leaders to create the Richland County Foundation in 1945. In doing so, the Founders perpetuated community philanthropy and access for individuals, organizations, and businesses to come together to Foster Good in Richland County.

Thank you for the continued support of fulfilling our mission to enhance the quality of life for those living in our community.

*Julie h. McCready*  
Chairwoman  
Julie McCready

*Bradford Groves*  
President  
Bradford Groves



**Provide Leadership** and act as a catalyst in identifying and addressing emerging community needs.

**Distribute Grants** for charitable purposes in the areas of Health, Economic and Community Development, Basic Human Needs, Education, Arts & Culture, the Environment, and Community Services.

**Prudently Manage** the Foundation's resources to achieve the maximum benefit for Richland County in perpetuity.

**Identify and Cultivate Donors** of all economic means and charitable interests.

**Assist Donors** in establishing funds to meet community needs and distribute proceeds in accordance with the donor's intent.

## The mission of the Richland County Foundation is to improve and enhance the quality of life in Richland County through strategic philanthropy and community leadership.

# FOSTERING GOOD

NURTURING LIVES FOR 75 YEARS



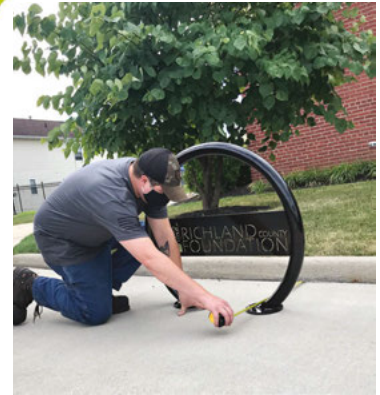
**World War II had just ended** when a group of seven community leaders decided to start the Richland County Foundation. They were inspired by local philanthropist Anna Scattergood, who created a fund to benefit poverty-stricken, elderly and terminally ill residents in Mansfield. It was with the guidance of D. Osborne Meese that the Foundation was established on October 7, 1945. The other founders were Paul Tappan, Norman Wolfe, Scott Coffin, George Stephens, John Finefrock and Robert Black.

The Richland County Foundation was modeled after the Cleveland Foundation and was created as an independent nonprofit organization that could accept and administer charitable gifts and bequests, regardless of size, for the benefit of the local community.

The founders would be proud of the generosity of the donors to the community foundation where the assets total over \$200M.

**Since 1945, the Foundation has granted \$102,209,200**

To celebrate the 75th Anniversary, the Foundation partnered with villages and cities in Richland County for beautification projects and bike rack installations.



As part of the observation of the 75th anniversary, bike racks were installed around Richland County.

Beautification grants were awarded to each city and village in Richland County as a way to mark the 75th anniversary.

The first grant made by the Foundation was in 1948 to the Friendly House for its new building.





# For Good. For Ever.

## Trustee Legacy Fund

**It is with gratitude** that we observe the 75th Anniversary of the Richland County Foundation and the vast philanthropic efforts the original founders began in 1945. We remember Anna Scattergood, a local philanthropist, and her passion to start a fund to benefit poverty-stricken, elderly and terminally ill residents of Richland County as the inspiration for the Foundation’s creation.

Over the last 75 years, the Board of Trustees have stayed focused on the mission and vision of Anna and the original founders by creating a legacy of investing in our community and its residents through grantmaking efforts.

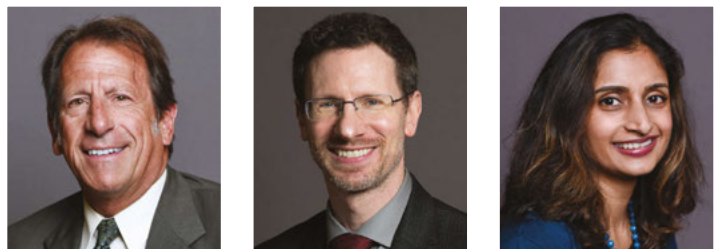
To mark the Foundation’s 75th Anniversary, the current Board of Trustees created and monetarily established a new fund: The For Good. For Ever. Trustee Legacy Fund. The language of the fund reads as follows:

“To provide financial support for programs that create a spirit of philanthropy amongst the past, present and future residents of Richland County in order to enhance the work of the Richland County Foundation within our community.”

The fund will seek past trustee input on possible grantmaking, allow trustees to identify emerging opportunities, build trustee legacy and lasting connections with the Foundation and help build awareness within the community of how trustees catalyze the work of the Foundation.



## Board of Trustees



### Trustees pictured right (listed from top to bottom)

#### First column

- Debbi Adams
- Karen Bierly
- Brigitte Burnell
- David D. Carto
- Michael Chambers\*
- Beth DeLaney

#### Second column

- Carl Fernyak
- Jessica Gribben\*
- Chris Hiner
- Norman Jones
- Barbara Zaugg Joudrey
- Julie McCready\*

#### Third column

- Gunther Meisse
- Jana Mulherin\*
- Theresa Roth
- Jotika Shetty
- Lee Tasseff

\*Denotes officers

# Staff



Maura Teynor  
**Chief Advancement Officer**

Stacie Shoemaker  
**Administrative Assistant**

Siera Marth  
**Community Investment Officer**

Bradford Groves  
**President**

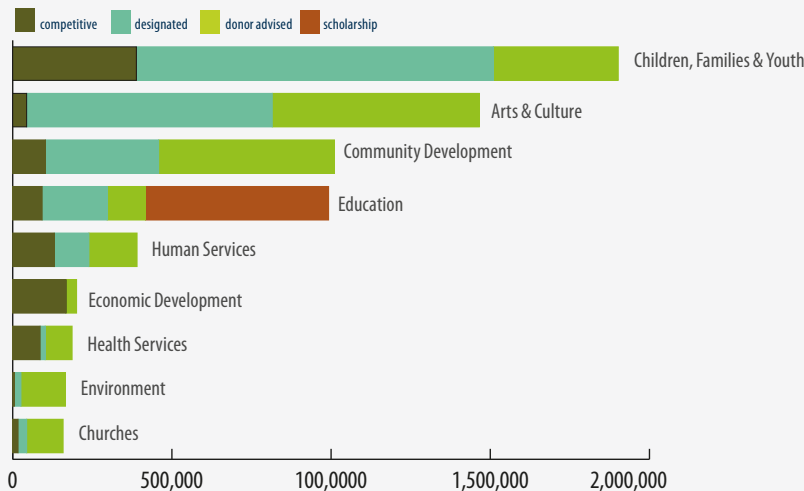
Allura Watson  
**Senior Community Investment Officer**

Robert Barrett, CPA  
**VP of Finance and Operations**



## Grants by Type

	<i>competitive</i>	<i>designated</i>	<i>donor advised</i>	<i>scholarship</i>	<i>total awarded</i>
Children, Families and Youth	388,363	1,121,340	392,371		1,902,074
Arts & Culture	43,769	771,570	650,408		1,465,747
Community Development	102,807	355,598	552,224		1,010,629
Education	92,505	204,272	120,227	575,209	992,213
Human Services	130,657	108,645	151,344		390,646
Economic Development	167,180	-0	33,450		200,630
Health Services	86,197	15,805	84,583		186,585
Environment	5,100	20,733	139,850		165,683
Churches	16,850	27,015	114,516		158,381
<b>Total</b>	<b>1,033,428</b>	<b>2,624,978</b>	<b>2,238,973</b>	<b>575,209</b>	<b>6,472,588</b>
	16%	40%	35%	9%	100%



## Grants by Program Area



Children Families & Youth	1,902,074
Arts & Culture	1,465,747
Community Development	1,010,629
Education	992,213
Human Services	390,646
Economic Development	200,630
Health Services	186,585
Environment	165,683
Churches	158,381
<b>Total</b>	<b>\$6,472,588</b>







## Progress on the Mansfield Rising Project

Photo courtesy of DestinationMansfield

**In 2018**, the Richland County Foundation leadership took an unusual track to develop an investment strategy for downtown Mansfield. Instead of hiring a professional consulting firm, it had a citizen-led group create the plan.

The Foundation turned regular citizens into consultants which gives depth and authenticity to the plan. It provides a road map for projects and opportunities for partnerships to continue the renaissance of Mansfield.

The vision is for Mansfield to become an optimal place to conduct business, gather, and live. This vision can be achieved through five key areas: effective land use, wayfinding, technical assistance for business, branding and marketing, and safety.

The Guiding Principles of the plan are downtown is everyone's neighborhood, big city amenities with a small-town feel, sustainable change happens incrementally, and placemaking is economic development.

This is a plan for any organization, business, citizen, or group looking to get involved. To be successful, this must be a comprehensive effort.

Costs range from sweat equity to millions of dollars. The Foundation will continue to lead, convene, guide, and fund efforts that support this plan. It will be implemented at various speeds and through various organizations with a result of a better downtown.

### 2020 UPDATE

#### Upgrade the City's Main Arteries

Mansfield City Council approved a design plan to improve Main Street. It aligns with the Mansfield Rising Plan to upgrade the city's main arteries. None of the main arteries leading to downtown Mansfield are beautiful. They are car-focused pathways through industrial centers, distressed neighborhoods, and business-zoned urban centers. Objective beauty and walkability must be a priority. The North and South Main Street, East and West 4th Street, Park Avenue East and West, must be improved and maintained as key entrances to downtown. They are the front door to our downtown. In 2019, the city converted Mulberry Street to two-way traffic. Mansfield City Council also approved a plan to convert Diamond Street to two-way traffic in 2021. These changes will create a more walkable downtown.

#### Improve the Look of Businesses in Downtown

The Downtown Mansfield, Inc. Facade Improvement Fund received grant funding from the Foundation and Mansfield City Council. The matching grants will be awarded to building owners to make improvements. This will assist economic development and the rehabilitation of historic properties in downtown Mansfield. The funds will be administered by a committee consisting of individuals from the historic preservation commission, architects, designers, and community members to provide guidance and resources on facade improvements. The resources provided in conjunction with the grants will make for quality restorations and renovations consistent with community standards.

#### Public Art Project

The Richland Community Development Group Art Sector is leading a public art initiative in downtown Mansfield. The project will be funded by various businesses and organizations with a 50% matching grant from the Richland County Foundation as part of its Mansfield Rising Project.

During this public art initiative in downtown Mansfield, up to \$50,000 in matching funds will be made available to businesses, nonprofits, and sponsors to help in funding the creation of art in a variety of methods, including traditional painted murals, installed artistic wallscapes, window art, as well as temporary and permanent public art on visible walls and surfaces.

Organizations and artists in the area are encouraged to apply to take part in this transformative and revitalizing effort to beautify and create impact in downtown through art. The artists and organizations who apply for

matching funding for public art projects will be vetted by a panel of local individuals.

### Branding

The Branding Committee began work to create a brand for the community in 2019, but it was halted due to the pandemic. The Committee hopes to continue its work in 2021. The purpose of branding Mansfield is to weave a powerful and positive story to raise awareness about why this is a great place to live and conduct business. Beyond raising awareness outside the city limits, a brand and positive message could improve the story Mansfield residents recite about their city. It could promote civic pride. Elements of a branding campaign include the creation of a brand and message, coordinating stakeholder websites and identification of a key person to manage and care for the brand.



*To read the plan go to [richlandcountyfoundation.org](http://richlandcountyfoundation.org), click “Community Impact,” then the “Mansfield Rising” tab.*



## Generous Donors Make

## Richland Gives a Success



**Richland Gives**, an online giving event hosted by the Richland County Foundation, raised \$356,820 for 83 Richland County nonprofit organizations. Since its inception in 2015, Richland Gives has raised \$1,435,869.

Richland Gives is designed to encourage people to contribute to local nonprofits they care about through a single giving website. The foundation hosted the day to build capacity, grow philanthropy and make the community stronger. It allows local organizations to raise funds and awareness as well as cultivate new donors and reinvigorate lapsed donors.

The Foundation awarded \$34,000 in grants as prize incentives during the giving event and \$10,000 in video grants. The video grants were awarded to the top finishers in previous years which provided a valuable marketing tool for the charity.

Chief Advancement Officer Maura Teynor and President Brady Groves host a virtual Richland Gives Leader Board Watch Party at DRM Productions.

### The winners in the small nonprofit category:

- 1st Lucas Community Center
- 2nd Little Buckeye Children’s Museum
- 3rd North Central State College Foundation

### The winners of the large nonprofit category:

- 1st Discovery School
- 2nd Renaissance Performing Arts
- 3rd Ohio Bird Sanctuary



**RICHLAND COUNTY FOUNDATION  
STATEMENT OF ASSETS, LIABILITIES, AND NET ASSETS  
MODIFIED CASH BASIS**

December 31, 2020 and 2019

	<u>2020</u>	<u>2019</u>
<b>ASSETS</b>		
<b>Assets</b>		
Cash	\$ 837,555	\$ 942,557
Investments	198,472,822	175,473,875
Property and Equipment, Net	1,264,086	1,310,167
<b>TOTAL ASSETS</b>	<b>\$200,574,463</b>	<b>\$177,726,599</b>
<b>LIABILITIES AND NET ASSETS</b>		
<b>Liabilities</b>		
Payroll Taxes Withheld	\$ 1,997	\$ 4,769
Annuity Contracts Payable	44,585	47,157
Funds Held as Agency Endowments	8,448,931	7,607,587
Total Liabilities	8,495,513	7,659,513
<b>Net Assets</b>		
Without Restrictions	107,571,381	93,106,420
With Restrictions	84,507,569	76,960,666
Total Net Assets	192,078,950	170,067,086
<b>TOTAL LIABILITIES AND NET ASSETS</b>	<b>\$200,574,463</b>	<b>\$177,726,599</b>

*The financial information is derived from the financial statements as audited by Wilging, Roush & Parsons CPAs. A copy of the complete audited statement is on file at the Foundation office and available upon request.*





**STATEMENT OF REVENUE COLLECTED, EXPENDITURES PAID  
AND OTHER CHANGES IN NET ASSETS  
MODIFIED CASH BASIS**

Years Ended December 31, 2020 and 2019

	<b>2020</b>			<b>2019</b>
	<i>Without Restrictions</i>	<i>With Restrictions</i>	<i>Total</i>	<i>Total</i>
<b>Revenue and Support</b>				
Contributions	\$8,643,535	\$1,001,656	\$9,645,191	\$2,825,338
<b>Investment Income</b>				
Interest and Dividends	1,748,089	1,314,850	3,062,939	3,354,729
Net Realized Gains on Investments	546,075	658,837	1,204,912	1,674,373
Net Unrealized Gains on Investments	7,497,670	7,730,561	15,228,231	22,313,675
Other Investment Income	113,743	118,506	232,249	0
Less Investment and Custody Fees	(252,920)	0	(252,920)	(204,219)
Net Investment Income	9,652,657	9,822,754	19,475,411	27,138,558
Change in Gift Annuity Value	0	(6,803)	(6,803)	(3,512)
Administration Fees Charged to Agency Funds	25,360	0	25,360	24,470
Net Assets Released From Restrictions	3,320,122	(3,320,122)	0	0
Reclassification of Net Assets	(49,418)	49,418	0	0
<b>Total Revenue and Support</b>	<b>21,592,256</b>	<b>7,546,903</b>	<b>29,139,159</b>	<b>29,984,854</b>
<b>Expenses and Other Deductions</b>				
Net Grants Paid	6,175,522	0	6,175,522	6,072,890
Administrative and Functional Expenses	951,773	0	951,773	843,156
<b>Total Expenses</b>	<b>7,127,295</b>	<b>0</b>	<b>7,127,295</b>	<b>6,916,046</b>
<b>Increase in Net Assets</b>	<b>14,464,961</b>	<b>7,546,903</b>	<b>22,011,864</b>	<b>23,068,808</b>
<b>Net Assets at Beginning of Year</b>	<b>93,106,420</b>	<b>76,960,666</b>	<b>170,067,086</b>	<b>146,998,278</b>
<b>Net Assets at End of Year</b>	<b>\$107,571,381</b>	<b>\$84,507,569</b>	<b>\$192,078,950</b>	<b>\$170,067,086</b>

A personal

legacy of

giving



**Including a charitable bequest** in your will is a simple way to make a lasting gift to your community. When you make this gift through the Richland County Foundation, we establish a special fund that benefits the community forever and becomes your personal legacy of giving.

**How it works**

- You include the Richland County Foundation in your will as a bequest; we can help you or your attorney with recommended language.
- You determine the type of fund you would like to establish with your gift.
- Upon your death, we set up a special fund in your name, or in the name of your family, to identify an area of interest, or in honor of any person or organization you choose.
- Your charitable gift is excluded from your assets for estate tax purposes.
- Our professional staff considers your charitable wishes and determines the areas of community need that would be most impacted by grants from your gift.
- Our board issues grants in the name of the fund you establish (if you prefer, grants can be made anonymously).

- We handle all the administrative details.
- Your gift will be placed into an endowment that is invested for long-term return. Earnings from your fund are used to make grants addressing community needs. Your gift-and all future earnings from your gift-is a permanent source of community capital, helping to do good work forever.

Making a bequest to the Richland County Foundation is an easy way to transfer assets to charity. And, you can decide to do it at any age by adding to an existing will or drafting a new one. In doing so you leave a legacy to your community, while enjoying the assets you need to maintain your current lifestyle. Plus, you are able to distribute some or all of your assets, tax free.

You can give cash, appreciated stocks, or other assets. Some of the most tax-efficient asset types to give through your estate plan come from retirement plan accounts, since heirs would be taxed on the income in respect of the decedent (IRD). Through your will, you can choose to give a stated dollar amount, a specific property, a percentage of your estate, the remainder after distributions to other beneficiaries, or you can make your gift contingent on certain events. We offer a variety of giving tools to help people achieve their charitable goals.

**How to Donate to a Fund**

Anyone can donate to the various funds at the Foundation online at [richlandcountyfoundation.org](http://richlandcountyfoundation.org), select the fund you want to support in the first dropdown box. Or you can write a check to the Richland County Foundation and note the fund on the memo line.





## A Mansfield Teacher

### Remembered with a Fund

“This is a wonderful way to remember a wife, mother and teacher. It will help foster learning and growth among local students,” said Foundation President Brady Groves.

**The Diana Wilkinson Memorial Fund** was established at the Richland County Foundation as a way to honor her work as a teacher. She worked with students at Roseland, Carpenter and Springmill Elementary schools. The purpose of the donor designated fund is to provide funding for tutors in the Mansfield City School District.

The fund was set up by her husband, Mark, and their sons, Matt, and Marc.

Diana taught kindergarten and second grade for 30 years. After retirement she continued to enrich young people’s lives by tutoring throughout Richland County. She helped students prepare to take the proficiency test. Every student she tutored passed the test.

A lifelong proponent of continued learning and discovery, Diana constantly espoused the value of education. She was proud that each of her sons obtained post-graduate degrees in the fields of studies they were most passionate about.

## Katy Ault Phillips

### Memorial Scholarship Fund

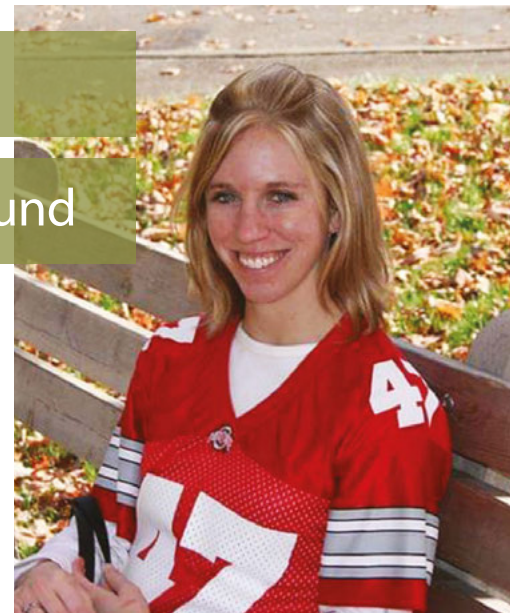
**Katy Ault Phillips** was a very giving person and now a memorial scholarship fund has been set up to remember her. Katy passed away in 2012 at the age of 30 from melanoma.

Katy’s family initially established the Katy Ault Phillips Melanoma Foundation to help people undergoing cancer treatments. They ran the foundation for six years and found it to be a rewarding but emotional job. The foundation was closed about two years ago. Her mother, Linda Reisdorf, still wanted to do something and thought a scholarship fund would be a great way to honor Katy in a philanthropic way.

The Katy Ault Phillips Memorial Scholarship Fund will benefit students from Lexington High School, Katy’s alma mater.

Katy earned her undergraduate degree in Recreational Therapy from the University of Toledo and her Master of Occupational Therapy from the Medical University of Ohio. She worked as a recreational therapist in Toledo and then as an occupational therapist in Springfield, MO.

Linda said Katy had a genuine love of life and was very compassionate.







Nurturing  
the Parks of  
Richland County

Many people, including Ray and Rani Piar, are passionate about the Richland County Park District. To make sure it thrives, the couple set up a donor-designated fund at the Foundation called the Friends of the Richland County Park District. Avid cyclists, the B&O Bike Trail is especially close to their hearts. However, the fund will provide grants to improve and nurture all the Park District's assets which include the bike trail, Gorman Nature Center, Clear Fork Valley Scenic Trail, and Fleming Falls Preserve.

Ray and Rani established a second fund and they named it the B&O Trail Capital Fund. Its purpose is to maintain the bike trail that runs from Mansfield to Butler. Plans are underway to build a maintenance building next to the trail in Lexington. The project also includes a picnic pavilion to be enjoyed by walkers, runners, and bicyclists.

Ray said the building will be very beneficial to the volunteers who work on the trail. It will be located midway on the trail and will store mowers and other equipment used by the volunteers.

**History of the Richland County Park District:** *(taken from the Richland County Park District website)*

The park district began in 1965 by an act of Probate Judge Charles Freehafer. Bob Schraedly served as the district's first director. The district acquired its first park property in 1975 when, as the story is told, Schraedly convinced Jim Gorman and his sister, Jean Bates, to donate 20 acres of land on Lexington Avenue. Over the next four years they donated about 64 more acres to bring the total to about 84 acres. In the intervening years, three more parcels were purchased with grant money to bring the total to almost 150 acres.

A committee was formed to decide how to best use the new parkland. They decided Richland County needed a "nature center" to provide learning opportunities about the natural world.

Steve McKee was hired as the district's second director in 1978. McKee's work, along with help from assistant director, Merrill Tawse, included the installation of a trail system, development of various prairie, wetland, and forest habitats; a nature education program; construction of a visitor center and the establishment of a nonprofit, Friends of the Gorman Nature Center.

Over \$500,000 was raised to build a state-of-the-art, energy-efficient visitor center. Architect Marion Zaugg designed the innovative building, which opened in 2001. At its grand opening, Friends of the Gorman Nature Center gifted the building to Richland County.

In 1986 the park district received word that CSX Railroad was going to abandon its rail line in Richland County and that there was new federal legislation enabling the creation of recreational trails on such abandoned rail lines. The Richland County Park District successfully petitioned the Interstate Commerce Commission for the opportunity to pursue 18.4 miles of rail corridor that would connect Butler, Bellville, Lexington, and Mansfield. With the help of the Richland Regional Planning Commission, they secured a rare 100% federal grant that paid for the acquisition, engineering, and construction of the trail. The next nine years saw public hearings and debate, several legal delays, help from then assistant-prosecutor James DeWeese, an accidental bridge demolition by CSX Railroad, a long engineering design process, and finally trail construction. The Richland B&O Bike Trail opened in 1995 and has been very popular ever since.

The most recent addition to the Park District is the Fleming Falls Preserve. It formerly was known as Camp Mowana off U.S Route 42. In 2019, the 183-acre property was preserved in perpetuity for conservation, recreation, and public enjoyment through cooperative efforts of the Richland County Park District, the Trust for Public Land, and the Lutheran Outdoor Ministries in Ohio.

The preserve was purchased for over \$2 million through funding from the Clean Ohio Conservation Fund and the Lutheran Outdoor Ministries in Ohio.





## Regional Manufacturing

## Coalition Fund

RMC President Steve Cummins and  
RCF President Brady Groves

**The Regional Manufacturing Coalition Ohio** established a donor-advised fund to further its mission which is to support North Central Ohio manufacturers through education, training, and networking. RMC serves Richland, Ashland, Crawford, Huron, Knox, and Morrow counties.

“This fund will allow us to help local students obtain degrees in manufacturing and engineering- related fields at the Ohio State University, Mansfield campus,” said RMC President Steve Cummins.

“The goal of the RMC fund aligns with one of the Foundation’s strategic initiatives which is to bridge the gap between local job openings and education and certifications,” said Foundation President Brady Groves.

The RMC currently serves over 100 organizations collaborating manufacturers alongside numerous associative organizations and education groups. These manufacturers represent the region’s food, fabrication, assembly, machining, and other industries. Also engaged and welcome to select discussions are various economic development representatives, elected officials, community groups, and media representatives. As a manufacturing coalition, RMC Ohio boasts an incredibly diverse group of members, each serving an important role in our industry.

The RMC also hosts an annual Manufacturing Day so high school students can explore career opportunities at area manufacturing companies. The event has attracted thousands of students over the past several years.

### Objectives of RMC

- Serve as a networking and learning platform for members
- Promote the manufacturing industry throughout our region
- Partner with area organizations and schools to promote various workforce initiatives
- Assist local, private, and public organizations in attracting and retaining manufacturing and related businesses in the area
- Educate members on government programs designed to benefit manufacturers
- Provide a voice for area manufacturers to local, state, and federal government and offices
- Provide a platform for members to form strategic alliances
- Work with the North Central Ohio Industrial Museum to ensure a strong manufacturing future by honoring our past and showcasing current efforts

**For membership information go to [rmcoho.org](http://rmcoho.org)**





## COVID-19 Rapid Response Grants

Volunteers work hard at the Grace Episcopal Church Food Pantry in Mansfield. They always need volunteers and donations. The food pantry received a grant from the Foundation's COVID-19 Rapid Response effort.

- American Red Cross** for general support
- Area Agency on Aging** to deliver meals to people between the ages of 50 and 59 in Richland, Crawford and Ashland counties.
- Ashland Community Foundation** for its Emergency Fund
- Avita Health Foundation** for personal protective equipment and general support
- Bellville Neighborhood Outreach Center** for meat in its food pantry
- Catholic Charities** for rental assistance
- Catalyst Life Services** for personal protective equipment, telehealth, and tech support
- Community Foundation of Otsego County** for its COVID Fund
- Community Health Access Project (CHAP)** for diapers and formula
- Domestic Violence Shelter** for general support
- Grace Episcopal Church** for its outdoor food pantry and food/Hoop House for Winter Distribution
- Harmony House** for roof repair

In response to the COVID-19 pandemic, the Richland County Foundation Board of Trustees redirected its Unrestricted/Community Fund to meet emerging needs. The Community Fund provided grants to support nonprofit organizations in Richland County.

Whether seeking ways to expand current services or to minimize the consequences of curtailing services to reduce health risks to our community, the Foundation wanted to alleviate the financial burden. The Foundation believes that generosity has the power to unite and heal communities in good times and bad. A global threat like COVID-19 affects more than just the infected.

A Community Engagement Team made up of people working in the health and human services sectors met frequently to make grant recommendations.

In 2020, \$743,902 was awarded for COVID-19 Relief in the community. That total includes the funding from the Foundation's Community Fund, Donor-Advised Funds, \$100,000 from Richland County Job and Family Services, and \$37,742 raised online via a special COVID-19 Relief edition of Richland Gives in early May.

- Humane Society of Richland County** for emerging needs at the shelter
- Little Buckeye Children's Museum** for emergency operating support
- Love in the Name of Christ** for a copier
- Madison Local Schools** for Final Forms and Nurse
- Mansfield Area Y** for general support
- Mansfield Art Center** for emergency operating support
- Nuhop Center for Experiential Learning** for respite care
- Ohio Bird Sanctuary** for general support
- OhioHealth Foundation** for lodging for frontline healthcare providers
- Raemelton Equestrian Therapeutic Center** for emergency operating support
- Richland Astronomical Society** for touchless telescope station
- Richland Public Health** for Pop Up COVID-19 Testing
- Richland County Youth and Family Council** for assistance to single adults, couples without minor children, and those over the age of 60 who have been impacted by COVID-19
- Salvation Army** for general support
- Shelby YMCA** for general support

The Fran and Warren Rupp Fund at the Foundation provides interns to many local nonprofit organizations. Richland County Soil and Water Conservation intern: Kourtney





# Education | 399 grants | \$992,213

## Competitive

### Discovery School

Richland Gives - Matching Grant (2 Grants) — \$5,500

### Madison Local Schools

COVID-19 Rapid Response Initiative — \$18,000

### Mansfield City Schools

Doug Castle Legacy Project/ Martin Luther King Breakfast — \$250

### North Central State College Foundation

Richland Gives - Matching Grant (2 Grants) — \$2,500

### Saint Mary's Catholic Schools

Richland Gives - Matching Grant — \$250

## Designated

### Ashland University

Purchase Library Books — \$638

### Clear Fork Valley Foundation

Grants and Scholarships — \$7,366

### Lucas Local Schools

Educational & Athletic Programs & Materials (6 grants) — \$53,577

### Mansfield City Schools

Art and Music Programs (2 grants) — \$2,766

Distance Learning (2 grants) — \$1,444

Tutoring Support — \$5,000

### Methodist Theological Seminary

Scholarship for a Richland County Resident — \$259

### North Central State College

Financial Aid to Richland County Students — \$4,231

### North Central State College Foundation

General Support — \$38,779

### The Ohio State University - Mansfield

Scholarship Support — \$28,328

Business Development Support — \$29,044

Faculty Development Support — \$7,463

Financial Aid to Richland County Students — \$16,922

### Ontario Local Schools

General Support for Technology Programs — \$8,455

## Donor Advised

### The Brookwood School

COVID Communication — \$1,851

### Denison University

General Support — \$2,500

### Discovery School

General Support (4 grants) — \$52,167

### Hartwick College

Nursing Simulation Laboratory — \$4,166

Nursing Scholarships — \$5,000

### The James Madison Institute

General Support — \$3,000

### Mansfield Christian School

Radio Broadcast Training — \$500

Chemistry Lab — \$12,000

### Mansfield City Schools

Malabar Seating, STEM & Tyger Bags — \$11,895

### North Central State College Foundation

Tuition Freedom — \$16,667

### The Ohio State University Foundation

Scholarship Support — \$1,500

### Plymouth-Shiloh Local Schools

Supplies for Art/ Music — \$8,131

### Soldiers & Sailors Memorial Museum

Museum Needs — \$850

Stellina Telescope was made possible by a grant from the Fran and Warren Rupp Fund.



Andromeda Galaxy



## College & Trade School Scholarships

Scholarships  
297 Scholarship grants  
\$575,209

## Teacher Assistance Program Grants

58 grants  
\$66,005



Dear Richland County Foundation,

It was a magical day for my Fourth Grade students, and it was largely due to your generous grant money. In June when I thought about teaching hands-on Science during COVID-19, I began to search for resources to still allow my students to fully experience our Electricity Unit, even during COVID. Normally, we have a few circuit kits that students share in groups and between classes. That was just not going to be possible this time.

I found individual circuit bags that each child could use, and literally see the light go on as they assemble circuits. The

problem solving and perseverance that comes from these lessons are incredible. With your grant money, each student made parallel circuits, even though we are in remote learning. They loved it!

Thank you for helping us to have this special learning opportunity! We are so grateful!

Jennifer Hooper, Lexington Eastern Elementary School

# Children Youth Families | 102 grants | \$1,902,074

## Competitive

### **Altrusa Club of Mansfield**

*Buddy Bags — \$1,000*

### **Buckeye Council Boy Scouts of America, Inc.**

*Richland Gives - Matching Grant — \$500*

### **Flying Horse Farms**

*Richland County Campers — \$6,500*

### **Friendly House Association**

*Richland Gives - Matching Grant — \$1,000*

### **Harmony House Homeless Services, Inc.**

*COVID-19 Rapid Response Initiative: Roof Repair — \$5,000*

### **Junior Achievement of NCO**

*Richland County Impact — \$30,000*

### **Mansfield Area Y**

*75th Anniversary Grant - Splashpad Free Day — \$1,200*

### **North Central State College**

*Mansfield 3rd Grade Spelling Bee — \$1,600*

### **Nuhop Center for Experiential Learning**

*Richland Gives - Matching Grant — \$250*

### **The Little Buckeye Children's Museum**

*Richland Gives - Matching Grant (2 grants) — \$3,500*  
*Imagination District Capital Campaign — \$200,000*  
*COVID-19 Rapid Response Initiative: Operations — \$50,000*  
*75th Anniversary Grant - Free Admission — \$2,500*

### **Raemelton Therapeutic Equestrian Center**

*Equine Based Therapy Scholarships — \$3,460*  
*COVID-19 Rapid Response Initiative: Operations — \$16,500*

### **Richland Carrousel Park, Inc.**

*75th Anniversary Grant - Free Admission — \$800*

### **Richland Community Development Group**

*Passport to History — \$500*

### **Richland Pregnancy Services**

*Richland Gives - Matching Grant — \$1,250*

### **Shelby Y Community Center**

*75th Anniversary Grant - Free Day — \$575*

### **Visual Bucket List**

*Richland Gives - Matching Grant — \$1,500*

## Designated

### **Buckeye Council Boy Scouts of America, Inc.**

*General Support (2 grants) — \$31,694*  
*Program Support in Richland County — \$206*

### **Children's Dyslexia Center**

*General Support — \$44,991*

### **Friendly House Association**

*General Support (4 grants) — \$3,378*  
*Camperships — \$351*

### **The Little Buckeye Children's Museum**

*Imagination District Capital Campaign (3 grants) — \$930,522*

### **Mansfield Area Y**

*General Support (3 grants) — \$8,363*  
*Support of Women and Children's Programs (3 grants) — \$21,155*

### **Richland Carrousel Park, Inc.**

*General Support — \$28,619*

### **Richland County Children Services**

*The Children Services Gift Fund (3 grants) — \$3,363*

### **Richland County Children's Auxiliary, dba The Store**

*General Support for the New Store — \$448*

### **Richland Pregnancy Services**

*General Support — \$3,259*

### **Trapshooting Hall of Fame**

*General Support — \$44,991*

## Donor Advised

### **Buckeye Council Boy Scouts of America, Inc.**

*Operations, Investment in Character — \$10,000*

### **Flying Horse Farms**

*Richland County Campers (2 grants) — \$3,500*  
*Camp Upgrades — \$1,500*

### **Friendly House Association**

*General Support (2 grants) — \$2,500*  
*Richland Gives — \$3,000*

### **Galion Community Center YMCA**

*Youth Sponsor — \$1,000*

### **Harmony House Homeless Services, Inc.**

*General Support — \$50,000*  
*Program Support - Christmas — \$5,000*

### **The Little Buckeye Children's Museum**

*Internship Program (2 grants) — \$10,500*  
*General Support — \$20,000*

### **Mansfield Area Y**

*New Children's Play Structure — \$25,000*  
*Pool Renovations — \$150,000*  
*Open Doors Program — \$50,000*  
*Internship Program (2 grants) — \$6,300*  
*Capital Fund — \$250*  
*General Support (2 grants) — \$11,000*





**Nuhop Center for Experiential Learning**

General Support — \$2,000  
Respite Care — \$1,000

**Raemelton Therapeutic Equestrian Center**

General Support — \$10,000  
Lawn Care — \$1,000  
Horse Sponsorships (2 grants) — \$5,000  
Richland Gives — \$500

**Rails to Trails of Wayne County**

Heartland Trail - Close the Gap — \$8,333

**Shelby Y Community Center**

General Support — \$5,000

**St. Peter's Parish Boy Scout Troop #121**

General Support — \$4,721

**Visual Bucket List**

Internship Program — \$2,100  
Richland Gives — \$500

**Wayne Center For the Arts**

Digital Art Studio — \$1,667

**Worthington Township Richland County**

Hitchman Park Playground — \$1,000

**The Mansfield Y new playground**

The Mansfield Y provided bike safety tips to children with a grant from the Foundation's Summertime Kids program

Francis Hitchman Park: Many volunteers and donors rebuilt a playground for children of all abilities in Butler.



**CONNECTIONS FUND GRANTS**

1 Grant — \$2,500

- **Flying Horse Farms** — Richland County Camperships

**WOMEN'S FUND GRANTS**

4 Grants — \$31,429.34

- **Catalyst Life Services** — Veronica's House: Women's Residential Treatment Program
- **Richland County Youth & Family Services** — Child Care Support for Step Up to Quality
- **North Central State College Foundation** — Great Start: Support for Childcare & Development
- **Avita Health Foundation** — Avita Forensic Program: Essential Items Funding

**SUMMERTIME KIDS PROGRAM**

14 Grants — \$25,000

- **Blue Rose Mission** — Blue Rose Mission
- **LifeCare Alliance** — CODA's Camp Program
- **Crestview Local Schools** — Crestview Summer Art Enrichment
- **Richland County Board of DD** — Richland Newhope Campership
- **The Little Buckeye Children's Museum** — Play For All Program
- **Ohio Bird Sanctuary** — Friendly House Nature Camp
- **Shelby Church of the Nazarene** — Shipwrecked
- **Crossroads Community Church** — City Center Summer Camp
- **Clear Fork Youth League** — The Unstoppables Youth League
- **The Salvation Army** — Summer Zone 2020 "Zapped"
- **Renaissance Performing Arts** — Broadway Camp
- **Recreation Unlimited** — Summer Residential Camp
- **Mansfield Area Y** — Bike Safety Program
- **Mansfield Art Center** — S.T.E.A.M. Into Multi-Media Mania





# Community and Community Development | 77 grants |

## Competitive

### **Altrusa Club of Mansfield**

*Richland Gives - Matching Grant — \$1,500*

### **Bellville Neighborhood Outreach Center**

*COVID-19 Rapid Response Initiative: Food Pantry — \$5,000*

### **Village of Bellville**

*75th Anniversary Grant - Beautification — \$2,500*

### **Village of Butler**

*75th Anniversary Grant - Beautification — \$2,500*

### **Clear Fork Valley Foundation**

*Richland Gives - Matching Grant — \$1,250*

### **Community Action Commission**

*Richland Gives - Matching Grant — \$250*

### **Downtown Mansfield, Inc.**

*Richland Gives - Matching Grant — \$1,000*  
*Mansfield Rising: Facade Improvement — \$25,000*

### **Humane Society of Richland County**

*Richland Gives - Matching Grant — \$250*  
*Reorganization for Sustainability — \$24,000*

### **Kingwood Center Gardens**

*75th Anniversary Grant - Free Day — \$4,500*  
*Richland Gives - Matching Grant — \$500*

### **Village of Lexington**

*75th Anniversary Grant - Beautification — \$2,500*

### **Love Our Heros**

*Richland Gives - Matching Grant — \$250*

### **Love Inc.**

*Richland Gives - Matching Grant — \$250*

### **Lucas Community Center**

*Richland Gives - Matching Grant (2 Grants) — \$5,500*

### **Village of Lucas**

*75th Anniversary Grant - Beautification — \$2,500*

### **Meyer Fabrication**

*Anniversary Bike Racks - Build & Install — \$7,007*

### **Ohio Association of Nonprofit Organizations**

*Membership — \$550*

### **Ohio Genealogical Society**

*Richland Gives - Matching Grant — \$1,000*

### **City of Ontario**

*75th Anniversary Grant - Beautification — \$5,000*

### **Village of Plymouth**

*75th Anniversary Grant - Beautification — \$2,500*

### **City of Shelby**

*75th Anniversary Grant - Beautification — \$5,000*

### **Village of Shiloh**

*75th Anniversary Grant - Beautification — \$2,500*

## Designated

### **Kingwood Center**

*General Support (4 grants) — \$53,832*

### **Mansfield Richland County Public Library**

*Books and Talking Books — \$2,980*  
*General Support — \$922*  
*Storybook Trail at Kingwood Center — \$3,133*

### **Mansfield Rotary Club Foundation**

*McGowan Courage Awards — \$6,114*

### **North End Community Improvement Collaborative, Inc.**

*General Support (4 grants) — \$224,544*

### **Ohio Genealogical Society**

*General Support — \$258*

### **City of Ontario**

*Police K-9 Unit and Vehicle — \$20,000*

### **Richland County Habitat For Humanity**

*General Support — \$461*

### **United Way of Richland County**

*General Support (2 grants) — \$43,354*

Kingwood Center Gardens opened its Storybook Trail. It is a literacy adventure through a woodland path. It was made possible by the Mansfield Richland Public Library, Keyser Library Fund, the George and Barbara Keyser Fund of the Foundation, and Park National Bank.





**\$1,010,629**

**Donor Advised**

**Altrusa Club of Mansfield**

*Spring Bash — \$1,000*

**Ashland County Community Foundation**

*Emergency Fund — \$5,000*

**Bellville Neighborhood Outreach Center**

*Winter Intern — \$930*

**Butler Clear Fork Adult Center**

*Chair Lift — \$1,000*

**Community Foundation of Otsego County, Inc.**

*Founders Campaign — \$8,333*

*COVID Fund — \$6,667*

**Crawford County United Way, Inc.**

*Child Care Development and Youth Mentoring — \$5,000*

*Annual Fund — \$1,000*

**Downtown Mansfield, Inc.**

*Internship Program — \$2,100*

*Richland Gives — \$500*

**Humane Society of Richland County**

*General Support (3 grants) — \$15,333*

*Richland Gives — \$5,000*

**Kingwood Center Gardens**

*Visitor Center Capital Campaign (2 grants) — \$49,444*

*Internship Program — \$8,400*

**Lucas Community Center**

*General Support (2 grants) — \$36,000*

**City of Mansfield**

*Internship Program (2 grants) — \$6,300*

**Mansfield Rotary Club Foundation**

*Scholarships (2 grants) — \$2,500*



Children enjoyed a new playground in Bellville. Many people and organizations made it possible including a grant from the Foundation. It was named after former Mayor Carolyn Studenmund.

**Mansfield Richland County Public Library**

*Kingwood Storybook Trail — \$4,617*

**North End Community Improvement Collaborative, Inc.**

*Internship Program — \$8,400*

*Microfarm Manager — \$45,000*

*General Operating — \$300,000*

*Shipping Container for Gro-Op — \$2,500*

**Plymouth Improvement Committee**

*General Support — \$500*

**Richland County Habitat For Humanity**

*Build #52 — \$13,333*

**United Way of Richland County**

*General Support (4 grants) — \$6,700*

*Basic Needs Allocations Program — \$16,667*



As part of the observation of the 75th anniversary, a beautification grant for improvements to a park in Shiloh.





# Arts & Culture | 86 grants | \$1,465,747

## Competitive

### Mansfield Art Center

Richland Gives - Matching Grant — \$250  
 75th Anniversary Grant - Free Art Saturday — \$1,650  
 COVID-19 Rapid Response Initiative: Operations — \$20,000

### Mansfield Community Playhouse

75th Anniversary Grant - Free Admission — \$4,119

### Mansfield Reformatory Preservation Society

75th Anniversary Grant - Free Admission — \$5,000

### North Central Ohio Industrial Museum

Richland Gives - Matching Grant — \$1,000

### Plymouth Area Historical Society

Richland Gives - Matching Grant — \$1,000

### Renaissance Performing Arts

Richland Gives - Matching Grant (2 grants) — \$3,000  
 75th Anniversary Grant - Theatre 166 — \$4,500

### Richland Academy of the Arts, Inc.

Richland Gives - Matching Grant (2 grants) — \$3,250

## Designated

### Children's Theatre Foundation, Inc.

General Support — \$1,592

### Mansfield Art Center

General Support (6 grants) — \$31,110

### Mansfield Community Playhouse

General Support — \$448

### Renaissance Performing Arts

Support of the Theatre (8 grants) — \$205,404  
 Support of the Mansfield Symphony (4 grants) — \$66,971  
 Support of the Mansfield Youth Orchestra — \$500  
 Imagination District Capital Campaign (4 grants) — \$442,733

### Richland Academy of the Arts, Inc.

General Support — \$729

### Richland County Historical Society

General Support (2 grants) — \$16,751

### Richland County Museum

General Support — \$5,332

## Donor Advised

### Ashland Schine's Theater Organization

Operating Capital — \$6,667

### Avon Theatre Film Center, Inc.

General Support — \$1,000  
 Scholarships — \$1,000

### Bruce Museum, Inc.

General Support — \$1,000

### Dayton Art Institute

General Support — \$250

### Fenimore Art Museum

Main Gallery ADA Project — \$16,667

### Firelands Symphony Orchestra

General Support — \$2,500

### Funk Heritage Museum

Newsletter Publication — \$500

### Galion Historical Society

New Website — \$1,333

### Malabar Farm Foundation, Inc.

Richland Gives — \$500

### Mansfield Art Center

General Support (2 grants) — \$17,667  
 Internship Program (2 grants) — \$10,500  
 Art Rising Capital Campaign (3 grants) — \$258,333  
 Summer Programming — \$9,747  
 Endowment — \$100,000  
 Information & Technology Project — \$4,886  
 Tyger Project, Year 1 — \$25,000  
 ARTREACH Campaign — \$10,000

### Mansfield Community Playhouse

General Support (4 grants) — \$17,000  
 Richland Gives — \$5,000

### Mansfield Reformatory Preservation Society

ADA Inclusive Elevator / Tech Upgrade — \$14,583

### North Central Ohio Industrial Museum

Museum Completion — \$6,667

### Plymouth Area Historical Society

General Support — \$10,000

### Reinhardt University

Support for Falany Performing Arts (2 grants) — \$1,500  
 Support for Funk Heritage Center — \$500

### Renaissance Performing Arts

Education and Community Engagement Manager — \$20,000  
 Support for Marketing and Growth (2 grants) — \$70,000  
 Internship Program (2 grants) — \$10,500  
 Richland Gives — \$500

### Richland Academy of the Arts, Inc.

Staff Recognition — \$500  
 Internship Program (2 grants) — \$10,500  
 Richland Gives — \$1,000

### Richland Early American Center for History

Building Construction — \$10,000

### Warren Rupp Observatory

Telescope for Distant Viewing — \$4,608



# Human Services | 54 grants | \$390,646

## Competitive

### Catholic Charities

COVID-19 Rapid Response: Emergency Services — \$75,000  
Richland Gives - Matching Grant — \$250

### The Domestic Violence Shelter, Inc.

Development Director — \$46,777

### Love Inc.

COVID-19 Rapid Response Initiative: Printer — \$870

### Mid Ohio Guardianship Services, Inc.

Richland Gives - Matching Grant — \$1,000

### National Alliance for the Mentally Ill

Richland Gives - Matching Grant — \$250

### Ohio District 5 Area Agency on Aging

COVID-19 Rapid Response Initiative: Meals — \$5,760

### The Salvation Army

Richland Gives - Matching Grant — \$750

## Designated

### American Red Cross

General Support (2 grants) — \$578

### The Domestic Violence Shelter, Inc.

General Support (2 grants) — \$4,912

### Mansfield Cancer Foundation

General Support (4 grants) — \$31,201

### Richland Newhope Industries, Inc.

Program Support — \$3,250

### The Salvation Army

General Support (6 grants) — \$16,696  
Individual Assistance — \$50,000

### Volunteers of America

General Support — \$2,008

## Donor Advised

### 33 Forever, Inc.

General Support — \$1,000

### American Red Cross

General Support (2 grants) — \$15,220

### Catholic Charities

Richland Gives — \$500  
Internship Program — \$2,100

### Citizens Against Government Waste

General Support — \$3,000

### The Domestic Violence Shelter, Inc.

Building Acquisition (2 grants) — \$9,333  
General Operating — \$8,333  
Richland Gives — \$5,000

### The Family Service Association

Emergency Service Program — \$1,667

### First Presbyterian Church

Cooperstown Food Pantry - Hunger Relief — \$1,000

### Greater Cleveland Food Bank

Richland Co. & Ashland Co. Support — \$16,667

### Mary McLeod-Bethune Intervention & Enrichment

Internship Program (2 grants) — \$6,300

### Media Research Center

General Support — \$3,000

### Mid Ohio Guardianship Services, Inc.

Internship Program — \$2,100

### National Alliance for the Mentally Ill

Leadership Alliance — \$1,000  
Mansfield Programs — \$1,000

### Ohio District 5 Area Agency on Aging

COVID-19 Response Needs — \$10,000

### Ohio Heartland Community Action

Food Pantry — \$1,000

### Planned Parenthood of Greater Ohio

Parent Circles Program — \$16,667

### Starfish Project of Richland County

Richland Gives — \$500

### The Salvation Army

General Support (5 grants) — \$39,290

### Upstate Home for Children Foundation

Early Childhood Access Coordinator — \$6,667

Salvation Army provided food and other assistance during the pandemic.







Economic

Development

Update

## Economic Development

| 13 grants | \$200,630

### Competitive

#### Idea Works

*Richland Gives - Matching Grant — \$250*

#### Richland Community Development Group

*Workforce, Retention & Expansion — \$100,000*

*Mansfield Rising - Branding — \$60,000*

*75th Anniversary Grant - Beautification — \$5,000*

*Art Sector: Public Art — \$1,930*

### Donor Advised

#### Crawford County Partnership

*Crawford: 20/20 Vision Campaign — \$5,000*

#### Idea Works

*Entrepreneurs' Kitchen — \$1,000*

#### Richland Community Development Group

*General Support — \$11,000*

*Men's Garden Club — \$5,000*

*Beautification (3 grants) — \$7,250*

*Internship Program) — \$4,200*

The Foundation offers scholarships for students to attend college and career technical education centers. Kyle Teynor, Owner of Teynor Fab LLC is pictured here.

In 2015 the Foundation invested \$1.1 million in a transformative five-year plan to address local business retention and expansion, workforce development and entrepreneurship.

“This was an opportunity to alter the economic development landscape in our area,” said Foundation President Brady Groves. “We wanted to invest in and partner with existing economic development organizations to encourage a new community development strategy that nurtures greater collaboration.”

“We are not the economic developers. However, while recognizing the valuable work already underway in the community, our Board of Trustees decided to commit financial resources for the development and implementation of a long-term strategic plan,” said Groves.

The strategic plan included:

- The centralization of business retention and expansion and workforce development efforts

- A scale-up program to identify and target services to area companies to address specific challenges and catalyze growth
- The empowerment of existing organizations to promote entrepreneurship and related services across the county

Two positions were created at the Richland Community Development Group; director of business, retention and expansion and workforce development. In 2018 the Foundation Board voted to maintain the amount invested in RCDG through 2021.

Richland County Job and Family Services initially invested \$50,000 in the workforce development portion of the project. Each year since then, RCJFS has invested \$60,000.

In 2021 the Richland County commissioners appropriated \$100,000 to the Richland Area Chamber & Economic Development which incorporated RCDG to continue the work that began in 2015.

# Health Services | 32 grants | \$186,585

## Competitive

### Catalyst Life Services

COVID-19 Rapid Response Initiative: PPE, Telehealth — \$32,500

### Community Health Access Project

Richland Gives - Matching Grant — \$250

### OhioHealth Foundation

COVID-19 Rapid Response Initiative: Lodging — \$50,000

### Richland Public Health

COVID-19 Pop-Up Testing (2 grants) — \$3,447

## Designated

### Alzheimer's Association-Northwest Ohio Chapter

General Support — \$416

### Catalyst Life Services

General Support — \$2,008

New Beginnings Program — \$4,310

### Hospice of North Central Ohio, Inc.

Bereavement Camp Operations — \$379

### Mansfield Memorial Homes

General Support — \$4,311

Employee Awards — \$1,977

### OhioHealth Foundation

MedCentral Hospital — \$461

### OhioHealth MedCentral Mansfield Hospital

General Support — \$1,723

### Third Street Family Health Services

General Support — \$220

## Donor Advised

### Avita Health Foundation

PPE Support — \$6,667

### Catalyst Life Services

General Support (3 grants) — \$6,550

COVID-19 Response Needs — \$10,833

The Connection - Outdoor Client Space — \$5,000

### The Cleveland Clinic Foundation

Cosgrove Transformation Fund — \$25,000

### Community Health Access Project

Basic Needs for Babies — \$500

### Family Planning of South Central New York

Access to Healthcare — \$5,000

### Healthnetwork Foundation, Inc.

General Support — \$5,000

### Heaven's Gait Therapeutic Riding Inc.

Bleachers — \$2,000

### Indian River Hospital Foundation

General Support — \$2,000



As a continuation of the Foundation's COVID-19 Rapid Response, the Area Agency on Aging received a grant to deliver meals to people ages 50-59.

"They have helped me by not having to go to the grocery store. Especially on really hot days because I have a hard time getting out. ... I walk with a cane ... and I worry about falling down. So, this has helped me immensely," said Diana Beal.

Photo credit: Elise Rowe

### Naples Community Healthcare System

General Support — \$1,000

### Pathfinder Village Foundation

Transportation Support — \$3,333

### Richland County Veteran Mentoring Program

Yoga for Veterans — \$2,600

### The Ohio State University Foundation

Medical Center COVID-19 - Greatest Need — \$4,000

Presidents Club for Medical School Support — \$3,000

### Third Street Family Health Services

Internship Program — \$2,100



## Environment | 37 grants | \$165,683

### Competitive

**Friends of the Gorman Nature Center**  
Richland Gives - Matching Grant — \$1,000

**North Central Ohio Land Conservancy, Inc.**  
Richland Gives - Matching Grant — \$1,000

**Ohio Bird Sanctuary**  
75th Anniversary Grant - Free Admission — \$600  
Richland Gives - Matching Grant (2 grants) — \$2,500

### Designated

**Gorman Nature Center**  
General Support — \$461

**Ohio Bird Sanctuary**  
General Support (3 grants) — \$20,272

### Donor Advised

**Conservancy of Southwest Florida**  
General Support — \$1,000

**Friends of the Black Fork**  
General Support — \$1,000

**Friends of the Gorman Nature Center**  
Internship Program (2 grants) — \$10,500  
B&O Bike Trail Maintenance — \$18,000  
Butterfly Exhibit & Remote Education Equipment — \$5,000  
Richland Gives (2 grants) — \$5,500

### Grand Foundation

Trail System Project — \$1,000

**Greenwich Land Trust**  
Land Acquisition — \$1,000

**Highlands Nature Sanctuary**  
Arc of Appalachia — \$500

**The Nature Conservancy**  
General Support — \$250

**North Central Ohio Land Conservancy, Inc.**  
Clear Fork Valley Scenic Trail (3 grants) — \$21,000  
General Support (2 grants) — \$1,300

**The Ocean Conservancy**  
General Support — \$250

**Ohio Bird Sanctuary**  
Internship Program (2 grants) — \$12,600  
General Support (3 grants) — \$45,250  
Accessible Treehouse Classroom — \$2,500  
Richland Gives — \$5,000

**Ohio Environmental Council**  
General Support (2 grants) — \$3,000

**Old Growth Forest Network**  
General Support — \$500

**Richland Soil and Water Conservation Dist.**  
Internship Program — \$4,200

**Sierra Club Foundation**  
General Support — \$500

## Churches | 26 grants | \$158,381

### Competitive

**Freedom Ridge Church**  
Richland Gives - Matching Grant — \$250

**Grace Episcopal Church**  
COVID-19 Rapid Response: Outdoor Food Pantry — \$10,000  
COVID-19 Rapid Response: Hoop House — \$6,000

**Kingdom Grace Fellowship**  
Zoe's Learning Center - Afterschool Program — \$600

### Designated

**First Christian Church**  
General Support — \$356

**First Congregational Church**  
General Support (5 grants) — \$20,974  
Support for Individual Assistance Program — \$500  
Music Department Support — \$1,823

**Mansfield 1st EPC**  
General Support (2 grants) — \$2,831

**Saint John's United Church of Christ**  
General Support — \$531

### Donor Advised

**First Congregational Church**  
General Support (2 grants) — \$1,700  
Capital Improvements — \$16,666

**Freedom Ridge Church**  
General Support (3 grants) — \$25,000

**Grace Episcopal Church**  
Food Pantry — \$400

**Lighthouse Assembly of God Church**  
Helping Hands Food Pantry — \$250

**Resurrection Parish**  
General Support (2 grants) — \$70,000

**Waleska United Methodist Church**  
General Support — \$500




---

**GRAND TOTAL**  
**\$6,472,588**



## Funds

### SCHOLARSHIP FUNDS

- Frank & Bee Ackard Memorial Fund
- Banks-Willeke-Bunfill Scholarship Fund
- Robert G. & Mary Nell Beer Scholarship Fund
- Meg Black Memorial Scholarship Fund
- Black Women United Scholarship for Success Fund
- Thomas C. & Virginia A. Blizzard Fund
- Joseph T. "Jep" Bloor Memorial Scholarship Fund
- Mary Jane Bolus Scholarship Fund
- Emily Campbell Brown & Charles Gailey Brown "First Generation to College" Fund
- **Cardinal Civitan District Scholarship Fund**
- Karyne & Joe Carey Scholarship Fund
- Mary & Maxton Case Fund
- Children's Theatre Foundation, Inc. Endowment Fund
- Christ Lutheran Church of Lexington Scholarship Fund
- James H. Clements II Memorial Scholarship Fund
- Consolidated Scholarship Fund
- Cornerstone Freewill Baptist Church Scholarship Fund
- Davidson Scholarship Fund
- Tim Davis, Jr. Scholarship Fund
- Shelley Dees Memorial Fund
- Neil Doerman Bowling Green State University Scholarship Fund
- Neil Doerman North Central State College Scholarship Fund
- Dean A. & Eleanor H. Eckert Fund
- Marilyn J. & David P. Eckstein Memorial Scholarship Fund
- Joseph W. Elrod Scholarship Fund
- Miriam & Russell Ferrell Scholarship Fund
- M.I. & Feenie Fillweber Scholarship Fund
- Mark S. Fisher Memorial Scholarship Fund
- George & Pam Fonseca Scholarship Fund
- Phil Ford Scholar Athlete Scholarship Fund
- S.N. & Ada Ford Scholarship Fund
- Diane L. Gibson Memorial Scholarship Fund
- Earl H. Goetz Fund in Honor of Major McGowan
- Earl H. Goetz Fund in Honor of Vern Stover
- William G. and Margie Kauf Hailey English Scholarship Fund
- Eugene & Ruth Oestreich Harsch Scholarship Fund
- Charles H. & Dorothy B. Hickox Memorial Scholarship Fund
- Ocie Hill Scholarship Fund
- Betty J. Horner Scholarship Fund
- Susan L. Jaynes Memorial Scholarship Fund
- Monica M. Kaye Memorial Fund
- Edwin Park Kell Scholarship Fund
- Mary M. Kowalchik Scholarship Fund
- Lexington Alumni Association Scholarship Fund
- Lexington Kiwanis Club Scholarship Fund
- Licensed Practical Nurse Assoc. of Ohio, Division #5 Scholarship Fund
- Reggie Luby Scholarship Fund
- Ruth E. Lutz Fund
- Mansfield Noon Lions Club Scholarship Fund
- Patricia Maxwell Scholarship Fund
- Sandy Mazur / Spherion Excellence in Leadership Scholarship Fund
- Eleanor Searle McCollum Scholarship Fund
- Nancy McConnell Special Education Scholarship Fund
- Mentzer Scholarship Fund
- John L. Morley Memorial Scholarship Fund
- Ontario Alumni Assoc. Scholarship Fund
- Helen Keating Ott Library Scholarship Fund
- **Katy Ault Phillips Memorial Scholarship Fund**
- Richland County Medical Auxiliary Scholarship Fund
- Richard David Ronk Memorial Scholarship Fund
- Grace S. & Joe R. Roby Scholarship Fund
- Roby Family Fund
- Fran & Warren Rupp Scholarship Fund
- Eleanor S. Ryckman Memorial Scholarship Fund
- Richard & Mary Schuttera Fund
- Paul & Adelyn Shumaker Fund
- A. Richard Stofer Scholarship Fund
- Dorris C. Stofer Scholarship Fund
- Donald F. Thompson Fund
- Frederick L. & Harriett S. Tracy Scholarship Fund
- Richard & Sally Uhde STEM Scholarship Fund
- University & College Access Network Scholarship Fund
- University Club Educational Foundation-James P. Weldon Memorial Scholarship Fund
- Gregory VanScyoc Memorial Scholarship Fund
- Helen S. Weldon Scholarship Fund
- James P. Weldon Scholarship Fund
- William M. Weldon Scholarship Fund
- Walter W. Willis Rotary Scholarship Fund
- Marilyn A. Wilson Scholarship Fund
- Ashley Yetzer Memorial Scholarship Fund
- Yuncker Memorial Fund

**Bold Type** indicates new fund in 2020



Unrestricted Funds offer the donor and Foundation the broadest options to address and to impact the community's current and ever-changing needs.

## UNRESTRICTED FUNDS

- Betty J. Adair Fund
- Anonymous Donor Community Support Fund
- P.K. Athmaram, MD Fund
- Hejjaji & P.K. Athmaram, MD Fund
- C. Wilson & Josephine Mayberry Barnes Fund
- Robert B. Black Fund
- Roger A. & Elizabeth Thomas Black Fund
- Betty J. Blackstone Fund
- Virginia A. & Thomas C. Blizzard Fund
- Board Discretionary Fund
- Marion B. Bowers Fund
- Katharine C. Bristor Fund
- Roy G. & Nancy Y. Brown Fund
- Helen M. Burkholder Fund
- Joan B. & Truman Clark Fund
- Rex E. & Marjorie Sue Collins Fund
- Community Endowment Fund
- John B. & Pearl R. Conard Charitable Fund
- Consolidated Memorial Fund
- Marian M. Constance Fund
- William R. & Mary Jane Cress Fund
- Pearl M. Danback Fund
- Earle J. & Dottie Deems Fund
- Dean A. & Eleanor H. Eckert Fund
- Jessie L. Eckert Fund
- Doris J. & Robert H. Enskat Fund
- David W. & Louise W. Evans Fund
- David N. & Miriam G. Feiser Memorial Fund
- Fellows Fund
- Charles C. Fox Fund
- Florence Fox Fund
- James H. Germany Fund
- Carl B. & Marie L. Gibson Fund
- Earl H. Goetz Fund
- Roger M. & Elizabeth B. Gray Fund
- James H. Hoffman Fund
- Herbert S. Jones Fund
- Jesse LaDow Fund
- Nanciann P. McCormick Fund
- Dell Armstrong McMillen Fund
- Verdabelle Plank Miller Fund
- Dr. Donald E. Mills Fund
- Milton C. & Mary Louise Oakes Fund
- Katherine L. Parker Fund
- Catherine L. Rall Fund
- Edna K. Rex Fund
- Jane W. & John Bradley Rhind Fund
- Richland Gives Day of Giving Fund
- Betty Deisler Risser Fund
- Dell M. Robinson Fund
- John & Dell Robinson Family Fund
- Margaret Hay Russell Fund
- Alice B. and Allen M. Sanford Fund
- Jean U. & George V. Sauter Fund
- Esther Fickes Shaffer Fund
- Shelby Home & Public Health Endowment Fund
- Thomas A. & Clara H. Siegenthaler Fund
- Mary C. Slabaugh Fund
- Walter C. Stevens Family Fund
- Mary Mead Sturges & Robert Sturges Memorial Fund
- Alan P. Tappan Fund
- Heloise H. Tappan Memorial Fund
- Paul R. Tappan Fund
- W. Richard Tappan Fund
- Pauline S. Treisch Fund
- Charles R. Underhill Fund
- Mary L. Ward Fund
- Raymond & Lorraine Welte Fund
- Mary S. Wilsdon Fund
- Marion Draffan Wisdom Fund
- Charles G. Young Family Fund
- F. Wayne & Isabel Bogan Young Fund

## Charitable Fund Options

**Unrestricted Fund** Broad gift for community; Foundation awards grants

**Field of Interest Fund** Targeted gift to specific area; Foundation awards grants

**Designated Fund** Gift to benefit a specific organization

**Donor Advised Fund** Gift fund for donor recommended grantmaking

**Supporting Organization** Some attributes of private foundation with Foundation support

**Private Foundation** Independent board awards grants and separate administration



 Impact Flexibility  Donor Involvement

**Bold Type** indicates new fund in 2020



The Fran and Warren Rupp Fund at the Foundation provides interns to many local nonprofit organizations. Here are the summer interns at the Mansfield Art Center: Rochelle, Jennica, James and Alexis

## FIELD OF INTEREST FUNDS

- Ronald L. & Janeen E. Adams Fund
- George W. Blymyer Fund
- Henry A. & Melissa J. Booth Memorial Fund
- Chambers Family Foundation Fund
- Child Care Choices Fund
- Emeline Fate Christian Memorial Fund
- Peter S. Clark Memorial Fund
- Scott F. Coffin Fund
- Fran Conley, Joanne Williams & Betty Finlayson Fund
- Connections Fund
- Consolidated Individual Assistance Fund
- Lillian R. Dickson Fund
- Dean & Eleanor H. Eckert Fund
- Frances Fern Ecki Fund
- Bob & Esther Fry Fund
- Richard David Gardner Fund
- Richard R. & Veda J. Gardner Fund
- **Steve Goldman Fund**
- Guy T. Goodman Trust Fund
- Charlotte B. Gugler Fund
- James H. Hoffman Fund
- James A. Jones, MD Memorial Fund
- Helen Kaufman Fund
- Land Preservation Fund for Richland County
- Lexington Congregational Church Legacy Fund
- Margaret Ann Lindley Fund
- Esther G. Lutz Fund
- Floyd H. Lutz Fund
- Ralph C. Lutz Fund
- Betty Martin Elementary Education Fund
- A. Robert & Eve Matthews Fund
- Barbara A. Mau Field of Interest Fund
- Michael Robert McBride Memorial Fund
- Harry & Lois McCullough Fund
- Eleanor Searle McCollum Teacher & Education Fund
- Leona M. Miles Fund
- Verdabelle Plank Miller Fund
- Mid Ohio Drug Prevention Coalition Fund
- Mary J. Poticny Fund
- Earl J. & Carlie Leona Muth Memorial Fund
- Scattergood Fund
- Katharine McIntyre Shaffer Fund
- Siebert Arts Fund
- Howard & Majoria S. Smith-Bellville Community Trust Fund
- Smokeless America Foundation Fund
- Ethel Mayer Southeast Community Fund
- The Store Fund
- Summertime Kids Fund
- Heloise H. Tappan Estate Fund
- Paul R. Tappan Fund
- Teacher Assistance Program Fund
- Sarah B. Thomas Fund
- Voegele-Bahl Endowment Fund
- Ed Wadman Scleroderma Research Fund
- Ralph O. & Sarah L. Wise Fund
- Women's Fund
- Fund for Young Children with ALD

**Bold Type** indicates new fund in 2020

Field of Interest Funds allow our donors the opportunity to support specific interests within a broad area such as children's programs, the arts, education, the elderly, or health services.





Donor Designated Funds allow donors the opportunity to provide annual support to specific charities of their choice.

## DONOR DESIGNATED FUNDS

- Charles V. & Constance D. Adair Fund
- Alzheimer’s Association of NCO Endowment Fund
- Michael & Tina Bennett Fund
- John F. & Elizabeth W. Bissman Fund
- Raymond & Bessie Bixler Memorial Fund
- Esther M. Black Fund
- Betty J. Blackstone Fund
- Thomas C. & Virginia A. Blizzard Fund
- Boy Scouts of America Endowment Fund
- John S. & Laura Barr Brant Fund
- Betty Butler Fund
- Chiudioni Memorial Fund
- Clear Fork Valley Foundation Fund
- Rex E. & Marjorie Sue Collins Fund
- Croghan Family Fund for Renaissance Performing Arts
- Croghan Family Fund for Richland Academy
- Mary E. Delp Fund
- Downtown Mansfield Inc. Brickyard Maintenance Fund
- Finefrock Memorial Fund
- First Congregational Church of Mansfield, OH Permanent Endowment Fund
- Founders Fund
- Forrest W. Freeman, MD & Florence J. Freeman Fund
- **Friends of the Richland County Park District Fund**
- Gerald F. Fuddy Fund
- Richard R. & Veda J. Gardner Fund
- Earl H. Goetz Memorial Fund
- Earl H. Goetz Fund in Honor of Major McGowan
- Earl H. Goetz Fund in Honor of Vern Stover
- James H. Hoffman Fund
- Fred B. Hout Memorial Fund
- David E. Hughes Fund
- Keyser Library Fund
- Jessamine L. Lewis Fund
- Lucas Local Schools Sustaining Fund
- Esther G. Lutz Fund
- Floyd H. Lutz Fund

- Ralph C. Lutz Fund
- Ruth E. Lutz Fund
- Mansfield Art Center Endowment Fund
- Mansfield Civitan Club Fund
- Mansfield Mehock Relays Committee Fund
- Mansfield Police Department Fund
- Mansfield University Foundation Endowment Fund
- William & Katherine Jane McCarrick Fund
- McGowan Courage Awards Fund
- John A. & Florence B. Mintz Fund
- Arthur W. Negin Memorial Fund
- Katherine M. Norem Fund
- North End Community Improvement Collaborative Inc. Fund
- Milton C. & Mary Louise Oakes Fund
- Gertrude M. Odson Fund
- Ohio Genealogical Library Endowment Fund
- OSU/NCTC Photo Arts Fund
- Rowland & Delight Patricia Poth Fund
- Rainbow’s End Christian Center Fund in Memory of Elizabeth Copp
- Renaissance Performing Arts Assoc. Inc. Fund
- Rich History Alliance Fund
- Richland Community Development Group Fund
- Richland County Sheriff’s Office Fund
- Roby Family Fund
- Eleanor S. & Stanley J. Ryckman Music Endowment Fund
- Alice B. Sanford Memorial Fund
- Steve Shoenfelt Memorial Scholarship Fund
- Marian L. Stauffer Fund
- Third Street Family Health Services Endowment Fund
- Turley Raemelton Scholarship Fund
- Betty Thompson Wagner Memorial Fund
- Dr. Rebecca Sue Wappner Memorial Scholarship Fund
- Merris & Jean Welge Fund for the Ontario Police Department
- **Diana Wilkinson Memorial Fund**
- Charles G. Young Family Fund

**Bold Type** indicates new fund in 2020

Mansfield

Civitan Club

Continues to Give

The Mansfield Civitan Club disbanded this year after 60 years of service. Its main mission was to help people with intellectual and developmental disabilities.

In 2009, the club established a donor advised fund at the Foundation. Once the club ceased its operations, the officers decided to transition it to a designated fund to benefit Catholic Charities, Friendly House and Salvation Army.

Even though the Civitan Club no longer exists in Mansfield, it will continue to give and serve this community with its designated fund.

### Cardinal District Civitan Scholarship Fund

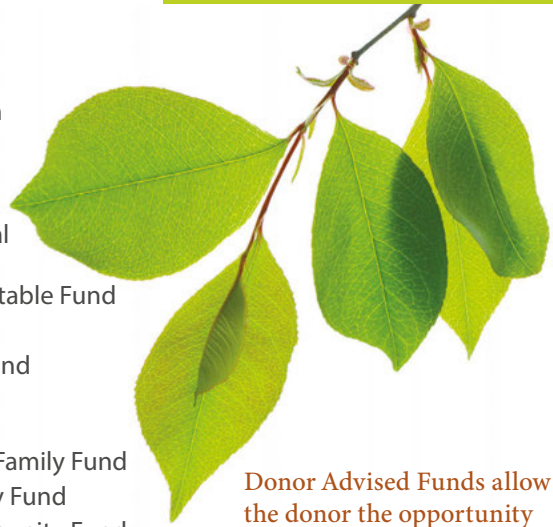
The Cardinal District Civitan Club established a new scholarship fund at the Richland County Foundation. It is for members or relatives of a member of Cardinal District Civitan Club with a focus on service.

## DONOR ADVISED FUNDS

- Brian Arthur Adair Fund
- **B & O Trail Capital Fund**
- Paul H. & Susan Gallagher Bailey Fund
- Wilbur G. & Esther L. Beer Fund
- F. Loyal & Judith B. Bemiller Fund
- Donald S. & Clara Louise Black Fund
- Robert & Esther Black Family Foundation Fund
- Dr. & Mrs. Stanley L. Brody Fund
- Burnell-Evans Family Fund
- Doug Castle Legacy Fund
- Compassion in Action Fund
- Shelby Cooper Memorial Fund
- DeLaney Family Fund
- **Earick Family Trust Fund**
- James Fanello Fund
- Carl & Annamarie Fernyak Fund
- Robert E. and Andrew S. Fisher Fund
- For Good. For Ever. Trustee Legacy Fund
- **Bob & Judy Fox Family Fund**
- C. Eugene & Sara A. Goin Fund
- Gorman Fund
- John P. Gross Family Fund
- Harmon Family Fund
- Hansen Fund for Women & Girls
- Jennette C. Hartman Fund
- Fred B. & Marian J. Hout Fund
- **William F. and Kathleen C. Hurdle Fund**
- Kaufman Family Fund
- Barbara & George H. Keyser Fund
- Konstam Family Fund
- Justin & Lynn Marotta Fund
- Eleanor McCollum Foundation Fund
- Annette L. McCormick Fund for the Environment

- The Remy-McCollough Family Trust Fund
- George A. & Olive L. Miller Fund
- Miller/Pattillo Memorial Fund
- Mind Body Align Charitable Fund
- MP Marion Fund
- Jana & Pat Mulherin Fund
- Mary Ann Nore Donor Advised Fund
- Jones Porter Nauman Family Fund
- Northwest Community Fund
- Richland Source Community Fund
- Grace S. & Joe R. Roby Fund
- **Regional Manufacturing Coalition Fund**
- Rotary Club of Mansfield - Tom Doty Community Fund
- Fran & Warren Rupp Advised Fund
- Sandy Cross Donor Advised Fund
- Ann Hartman Schettler Fund
- David E. & Theresa E. Siebold Fund
- Richard & Lorraine Shrilla Fund
- Pamela H. & Thomas R. Siegenthaler Fund
- Matthew P. & Linda H. Smith Fund
- Wray C. & Janet B. Smith Fund
- Christopher Mark Stull Fund
- Robert J. & Stella F. Sutter Fund
- Richard G. & Helen Taylor Fund
- Third Street Family Health Services Donor Advised Fund
- Thomas Family Fund
- Richard C. & Sally H. Uhde Fund
- Warner-Kafer Family Fund
- Marion Draffan Wisdom Fund

**Bold Type** indicates new fund in 2020



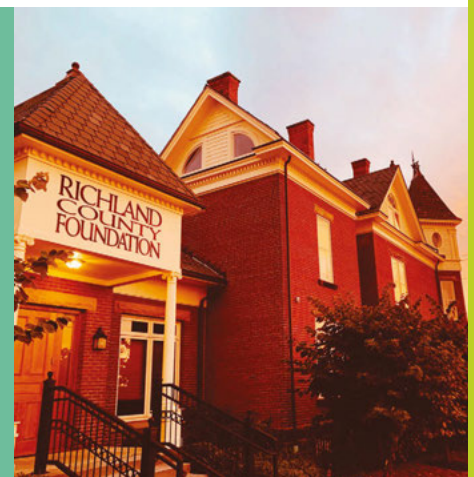
Donor Advised Funds allow the donor the opportunity to make grant suggestions to their favorite charities during their lifetime, and are an attractive alternative to a private foundation, offering the same benefits without the responsibility and cost of administration.



Foundation President Brady Groves said when the Mansfield Civitan Club ceased its operations, members of the Cardinal District approached him about a setting up a scholarship fund.

The Cardinal District supports Civitan Service Clubs in Ohio and West Virginia. Each Civitan Club helps their own community when a need arises. Civitans have been helping people since the organization was founded in 1917 by a group of businessmen determined to make a difference in their community.

In the 1950s, the service club adopted a special emphasis to assist people with developmental disabilities. Civitan was one of the major supporters of Special Olympics International and thousands of Civitans continue to support local events. Civitan clubs also fund and organize camps and events for people with developmental disabilities.





Agency Endowed Funds offer nonprofits the opportunity to build an endowment which may support or provide an annual revenue stream for the overall operations of the organization. Organizations not only benefit from this additional revenue but also from the Foundation's financial stability and integrity that assures their donors that their gifts will be prudently managed.



To make a gift to any fund at the Foundation go to [rcfoundation.org](http://rcfoundation.org), click the donate button. You select a fund from the first dropdown box or begin typing the fund name and it will auto populate. Or you can write a check to the Richland County Foundation and note the fund name on the memo line.

## AGENCY ENDOWED FUNDS

- Carrousel Community Trust Fund
- Catalyst Life Services Endowment Fund
- Children's Theatre Foundation, Inc. Endowment Fund
- Discovery School Endowment Fund
- First Congregational Church Endowment Fund (D&I)
- First Presbyterian Church (U.S.A.), Mansfield, Ohio Endowment Fund
- Hospice of North Central Ohio Endowment Fund
- Hospice of North Central Ohio Children's Bereavement Camp Fund
- Malabar Farm Foundation Endowment Fund
- Mansfield Area Y Endowment Fund
- Mansfield Cancer Foundation Endowment Fund
- Mansfield Cancer Foundation - Pat Kracker Breast Cancer Fund
- Mansfield Christian School Endowment Fund
- Mansfield Fine Arts Guild, Inc. Endowment Fund
- Mansfield Playhouse Endowment Fund
- Mansfield Reformatory Preservation Society Fund
- Mansfield Symphony Society Endowment Fund
- North Central Technical College (N.C.T.C.) Foundation Endowment Fund
- Ohio Bird Sanctuary Endowment Fund
- Ontario Public Schools Technology Fund B
- OSU-Mansfield Business Program Endowment Fund
- OSU-Mansfield Faculty Development Endowment Fund
- OSU-Mansfield Scholarship Endowment Fund
- Pioneer Career & Technology Center Fund A
- Richland Academy Endowment Fund
- Richland County Historical Society Endowment Fund
- Richland Newhope Center Fund
- Third Street Family Health Services Agency Fund
- United Way of Richland County Endowment Fund
- YWCA of Mansfield Endowment Fund

Agency Designated Funds are not endowed funds, so the nonprofit may use the principal of the fund. Like the Agency Endowment funds, these funds support or provide an annual revenue stream for the overall operations of the organization.

## AGENCY DESIGNATED FUNDS

- Community Action for Capable Youth
- Friendly House Association Capital Fund
- Kingwood Center Fund
- Malabar Farm Foundation Fund
- Mansfield Aviation Club Fund
- Mansfield City Public Schools Fund
- Mansfield City Schools Fine Arts Fund
- North Central Ohio Land Conservancy Designated Fund
- Pioneer Career and Technology Center Equipment and Technology Fund B
- Richland County Historical Society Fund "B"
- Richland Newhope Industries Fund
- Richland Newhope Fund II
- Salvation Army Fund
- University Club Educational Foundation Scholarship Fund



The Connections Fund of the Richland County Foundation announced grant awards during its annual reception at the Foundation. The Connections Fund Advisory Committee approved six grants totaling \$6,700.

Connections Fund Co-Chairwomen Valerie Ashcraft and Cassie Brumfield handed out the grants and thanked outgoing Co-Chairwomen Cristen Gilbert and Dr. Amy Staker-Breitinger for their dedication and service.

Foundation President Brady Groves said, “The Connections Fund is a great way for younger donors to get involved in philanthropy and community leadership.”

The following organizations and programs were awarded grants: Altrusa International - Buddy Bags, Flying Horse Farms – Richland County Camperships, Interlocal - Program Support, North Central State College – Mansfield City - Third Grade Spelling Bee, RichHistory Alliance – Passport to History booklets and Zoe’s Learning Center – After School Program

Since 2005 the Connections Fund has awarded close to \$120,000 to nonprofit organizations in Richland County. The mission of the Connections Fund of the Richland County Foundation is to foster and retain leaders and professionals in Richland County and to promote a philanthropic identity and involvement in the community.

### 2020 Connections Members

- Valerie Ashcraft (Co-Chair)
- Cassie Brumfield (Co-Chair)
- George & Kelly Andress
- Megan Blankenship
- James & Brooke Boyd
- Jon & Alison Burkhart
- Matt & Jennifer Dudley
- John & Carrie Fanello
- Melissa Fittante
- Dr. Scott & Jennifer Foster
- Drew & Cristen Gilbert
- Cameron Haring
- Tim & Abby Hilterman
- Matt & Rachel Schag
- Brian & Krista Schmidt
- Brian Breitinger & Dr. Amy Staker-Breitinger
- James & Ashely Twedt



Dr. Amy Staker-Breitinger, Krista Schmidt, Ashley Miller and Cristen Gilbert.

Rachel Schag

Alison and J.J. Burkhart

Justin McCraney of Zoe’s Learning Center accepted a grant from Connections Fund Co-Chairs Val Ashcraft and Cassie Brumfield for an after-school feeding, tutoring and mentorship program for 35 at-risk children.



Richland County Foundation

Connections Fund Awards Grants





Women's Fund Supports  
Childcare Initiative



**The Women's Fund** held its grant awards program virtually due to the COVID-19 pandemic.

Part of the presentation was to award the JoAnn Dutton Volunteer Community Service Award. It celebrates and honors women who devote a significant amount of time and energy in a meaningful way to local charitable organizations. The award was presented to Brigitte Coles for her work on projects including We ACT, Mend Mansfield, coordinated donations for many organizations, and collaboration to provide COVID-19 pop-up testing.

For the second year in a row, the WF awarded \$25,000 to Richland County Youth and Family Council for the childcare initiative. This year's grant will help fund a mentor and resources to provide support to in-home childcare providers in Richland County. RCYFC matched the \$25,000 both years for this project.

Other grants were awarded to Avita Health Foundation to buy clothes and personal hygiene items for women who are victims of violent crimes; Catalyst Life Services for materials to educate women about addiction; and North Central State College Foundation to provide women with up to \$200 a year for childcare.

The Women's Fund has granted over \$446,000 to programs and nonprofit agencies to empower women and girls. Women's Fund Chairwoman Kristine Lindeman said without the generosity of donors, we would not be able to make these grants.

The WF is conducting a fundraising campaign called "Lifting Women Up." They want to grow the endowment to \$2 million to make a larger impact in their grant making.

Chairwoman Kristine Lindeman and Chair-Elect Heidi Jones presented grants via Zoom.

Tammy Roberts accepted a grant for Avita Health System's Forensic Nursing Program.

Elaine Surber, Jen Howe and Laura Montgomery accepted a grant for Veronica's House, which is part of Catalyst Life Services.

Brigitte Coles was named the JoAnn Dutton Award winner.

## WOMEN'S FUND

### Benefactors \$5,000 or more

- Helen Anderson
  - Eleanor Beagle\* (by Nancy L. Jackson)
  - Elizabeth M. Black
  - Elizabeth T. Black
  - Elizabeth T. Black\* (by Frank T. Black Family Foundation)
  - **Robert and Esther Black Family Foundation**
  - Constance F. Brody, PhD
  - Joan H. Brown\* (by John T. Brown)
  - Carol Chambers
  - Candice Chaffee
  - Mary Jane Cress
  - **Patricia DeCenzo**
  - Katherine N. Fernyak
  - Sara A. Goin
  - Carol R. Goldman
  - The Hansen Fund
  - Hazel R. Hansen
  - Phyllis F. Hire
  - Betty J. Horner
  - Fred B & Marian J Hout\* Fund
  - Edith B. Humphrey
  - Nancy L. Jackson
  - Margaret Kay\* (by Thomas R. Kay)
  - Barbara A. Keyser
  - Marjorie M. Kieffer
  - Eleanor M. & Bill Kline
  - Barbara Lederer\*
  - **Kristine Lindeman**
  - Betty L. Massa\* (by Mark Berno)
  - Mechanics Savings Bank
  - Richland Bank
  - **Mary Riedl**
  - Salli S. Rohm
  - Pamela H. Siegenthaler
  - Elizabeth L. Smith
  - Linda H. Smith
  - Matthew P. Smith
  - Ottelia B. Stoodt\* (by Salli Rohm)
  - Carol B. Taylor
  - Helen Taylor
  - Helen Taylor (by family & friends)
  - **Frances K. Welsh (by Frances & family)**
  - YMCA 1976 Girls Swim Team
- Patrons \$2,500 or more**
- Betty J. Adair
  - Pat Addeo

- Dorothy Durham Ashbaugh\* (by Sara A. Goin)
- Elsie May Hobday Ashbaugh\* (by Sara Goin)
- **Janice Beddard**
- Elizabeth T. Black\* (by Elizabeth M. Black)
- Mary K. Bolin
- Joan H. Brown
- Fran Christian\* (by Helen Taylor)
- Portia Cummins Carto\* (by Elizabeth M. Black)
- Portia Cummins Carto\* (by O.M. Cummins III, Sara L. Cummins, & Suzanne C. Davis)
- **Nancie Cummins**
- **Gwen Cunningham (by Dr. & Mrs. Andrew Fahmy)**
- Suzanne C. Davis
- **Yvette Fahmy (by Dr. & Mrs. Andrew Fahmy)**
- Erin B. Fain, MD
- John & Katherine N. Fernyak (by Susan E. Fernyak)
- Dr. Stephanie Fernyak (by Katherine N. Fernyak & Dr. Susan E. Fernyak)
- Susan Duncan Gentile
- Judith Gibson
- Miriam T. Gilbert
- Meredith Rae Haber\* (by Rebecca A. Smith)
- Harriet Steele Keating Harbage\* (by Karen K. Bierly)
- Alberta Harber (by Arlene Sensor)
- Margaret Harrison (by Helen Taylor)
- Donna Hartnett\* (by friends & family)
- Jill Hand Hautzenroeder
- Janet E. Wobbecke Hudson
- Mary Jo Hull (by Helen Taylor)
- Key Foundation
- **Barbara Zaugg Joudrey**
- Virginia D. Kirkwood
- Margaret A. Lindley
- Manairco Employees (by Gayle Gorman Freeman)
- Marilou Marshall
- Mansfield Dental Auxiliary
- **Jeanne Meisse**
- Pearl Neer Plank\* (by Verdabelle P. Miller)
- Lydia J. Reid
- Gretchen Rohm-Ensing (by Salli Rohm)

- Kristen C. Rohm (by Salli Rohm)
  - Suzanne Schamadan
  - Lillian Senser\* (by Arlene Sensor)
  - Janet B. Nicely Smith
  - The Helen Taylor Family
  - Karen Rohm Williams (by Salli Rohm)
  - Janene Ann Yeater
- 10th Year Anniversary Founders-\$1,000 in 2006**
- Lucy A. Amsbaugh
  - Mary Jo Black
  - Leah Humphrey Blay (by Joanne Blay)
  - Mary Jean Chambers
  - Mary Jane Cress
  - Steven O. Cummins and Karen Redfearn
  - Lois C. Flinn\* (by friends)
  - Miriam E. Gilbert (By Miriam T. Gilbert)
  - Anna Mae Jones\* (by Mary Lou Herrold)
  - Deborah M. Schenk
  - Pamela H. Siegenthaler (by Geneva S. Cummins & Claire Proto)
- Founders \$1,000 by Dec. 31, 1997**
- Jeanne Alexander
  - Mary E. R. Alletto
  - Anonymous Donor
  - Kristin Arnold
  - P. K. Athmaram, MD
  - Susan G. Bailey
  - Cynthia Baker
  - Michelle K. Ballinger
  - Mary Ellen Barr\* (by Carol Brown & Kathleen Mehl)
  - Helen Bartlett
  - Marianna Basting
  - Charma Behnke
  - Cindy Biggs
  - Mary Jo Black
  - Elizabeth H. Blay (by Daniel L. Blay)
  - Maggie Bolin (by James R. Bolin)
  - Billie Brandon, JD
  - Emily Campbell Brown
  - Clarita L. Burton
  - Fran H. Christian
  - Virginia Clay, PhD
  - Clare Duncan Clemens
  - Geneva S. Cummins
  - Sara L. Cummins
  - Joyce A. Curry
  - Diane M. Daniels

- Ann Drake
- Rose Ann Dunn
- JoAnn E. Dutton\* (by Joseph Dutton)
- Ellen Eckert
- Deborah A. Exten
- Susan E. Fain (by Erin B. Fain, MD)
- Shelly E. Fisher
- Pamela S. Fleming
- Celia J. Flinn, MD
- Gayle Gorman Freeman
- Harriett Freeman (by Linda H. Smith)
- Peggy Jean Fry\* (by Constance Ament)
- Veda J. Gardner
- Frances B. Gaubatz
- Julie A. Giunti\* (by Laurie A. McKeon)
- Catherine D. Goldman
- Joetta Goodman
- Linda Haring
- Geneva C. Heifner\* (by Pamela H. Siegenthaler)
- Laurie Hickox, DVM
- Joanne Humphrey
- Barbara J. Huston
- Charla A. Irvin
- Margaret M. Joyce
- Linda Kafer, PhD
- Julie Kleshinski
- Vicki Kolb
- Shannon S. Lang
- Karin Fleming Manning
- Elizabeth F. Marquardt
- Betty L. Massa
- Jane McKean
- Jane Meyer
- Henry P. & Marjory L. Michaels\* (by Carol Michaels)
- Shirley Monica
- Judy & Larry Pabst
- Sophie Crittenden Polhemus
- Claire Siegenthaler Proto
- Betty D. Risser
- Jane A. Risser
- Julia Rohles

CONTINUED  
NEXT PAGE





**WOMENS' FUND  
CONTINUED**

- Alice B. Sanford
- Dell M. Robinson Sanford
- Deborah M. Schenk
- Arlene Senser
- Clara H. Siegenthaler Benjamin D. Smith
- Christopher M. Smith
- Elizabeth L. Smith (by Benjamin, Christopher, & Lauren Smith)
- Lauren Z. Smith
- Cassandra Stein
- Sally Stevens
- Catherine K. Stout
- Zoe M. Swain
- Marcine Taylor
- Lynn E. Humphrey Timmons
- Heather, Melissa, & Susan Tsavaris
- Cindy Kalinoff Watson
- Anne C. Wendling
- Suzanne S. Wilson

**Advocates \$1,000 since Jan. 1, 1998**

- Deborah L. Adams
- Altrusa International, Inc. of Mansfield
- American Association of University Women
- Ivy Amos
- Marlene Bisel
- John B. Black\* (by Jane A. Risser)
- F. Andrew Black
- Martha Jane Black
- Claire Blay (by Joanne & Dan Blay)
- Glenna Cannon
- Paula Cohen
- Teresa Cooperider
- Bambi Couch Page
- Emma Lousie Cummins (by Geneva S. Cummins)
- Steven O. Cummins and Karen Redfearn
- Barbara Cuning
- Rees Davis\* (by family & friends)
- Suzanne C. Davis (by Elizabeth M. Black)
- **JoAnn DuVall (by Ivy Amos)**
- Kay Fathe\* (by Helen Taylor)
- Annamarie Fernyak (by Katherine N. Fernyak)

- Christine Fernyak (by Katherine N. Fernyak)
- Susan E. Fernyak, MD (by Susan E. Fernyak & Katherine N. Fernyak)
- **First Energy Foundation**
- Marcy Sweda Flinn\* (by Celia J. Flinn, MD)
- Pamela Fonseca
- Alice A. Frazier
- Harriett Freeman
- Esther M. Fry
- General Motors-Mansfield Plant
- Sandra Gibbons
- Bernice Goldman\* (by Bill & Carol Goldman)
- Marjorie N. Gorman\* (by Gayle Gorman Green)
- Mariann S. Hand
- Edward Hansen (by Sandy Gibbons & Hazel R. Hansen)
- Alta J. Hartman\* (by Maxine Smith)
- Amy Hockett
- Avis Hood\* (by Jeanne Meisse)
- Catherine Anders Huff\* (by Barbara McBride)
- Lisa & Scott Humphrey
- Marie Jackson
- **Friends of Marilyn John**
- Hilda Johnson\* (by Betty J. Adair)
- **Heidi Jones**
- Nancy Joyce
- James W. Kehoe (by Shelby Foundation)
- Terry B. Kehoe (by Shelby Foundation)
- Pauline Keller (by Robert W. Lederer)
- Nancy Kolb
- Ann L. Konstam
- Jane Ann Korol\* (by Stanley Korol)
- Marion W. Lederer (by Robert W. Lederer)
- Martha Ellen Stahl Lenhart (by LaDonna J. O'Neal)
- LTV Copperweld
- Marilyn McCready
- Martha and Josephine McFarland\* (by Susan Madura)
- Pauline Keller

- McKinney\* (by Barbara Lederer)
- MedCentral Employee Civic Fund
- Dixie Mehock
- Carol Melchior
- Mary Moloney\* (by Jane McKean)
- Gabriella Morando\* (by Jim & Elizabeth Morando)
- Agnes E. Moritz\* (by Fred Moritz)
- Jana Mulherin
- Katherine Norem\* (by Katherine N. Fernyak)
- Georgia Kelly Nosker (by Judith Croghan)
- **Sharlene Neumann**
- Cynthia B. O'Neal
- Jane K. O'Neal\* (by William & LaDonna O'Neal)
- Marcy Parry
- Bonnie Palmer (by Kristine Lindeman)
- **Carol Payton**
- Rani Piar
- Norma E. Pfeifer\* (by Carl E. Pfeifer)
- Mary Kay Ransdell
- Sumitra, Raviraj\* (by Jotika Shetty)
- Cynthia M. Roby
- Bonita Ronk
- Kim J. Ronk (by Bonita Ronk)
- Carolyn L. Rusteburg
- Nancy Peppard Rupp\*(by family & friends)
- Christine Schenk\* (by family & friends)
- Theresa Siebold
- **Dr. Chiron W. Smith\* (by Lucy A. Amsbaugh)**
- Dorothy Correll Smith\* (by Lucy A. Amsbaugh)
- **Jan Smith**
- Martha B. Tawse
- JoAnn Taylor (by Helen Taylor)
- Louise H. Taylor
- Dorothy Van Voorhis\* (by Sally Workman)
- **Deanna West-Torrence**
- Sally Workman\* (by Bruce Workman)

**FELLOWSHIP**

**Visionary Fellowships (\$5,000 and up)**

- Dr. Richard E. Adams\* (by William and Kathleen Hurdle)
- Naomi J. Albers\*
- Donald N. Beddard\*, MD (by friends)
- Frank T. Black Foundation
- Joseph J. Fackler\*
- Mo Minich\* (by Ralph E. Minich)
- Ralph E. Minich
- Ruth M. Newman\* (by Dr. William C. Newman)
- Dr. William C. Newman
- Carl E. Pfeifer
- Norma E. Pfeifer
- G. Stanford Schneider
- Shafer Valve Company
- Michael Wilging\* (by Bruce & Sondra Wilging)

**Legacy Fellowships (\$2,500 or more)**

- Raymond Baquet\* (by family & friends)
- James E. Bierly\* (by family & friends)
- Dan Burns\* (by friends & associates)
- Douglas C. Freer\* (by family & friends)
- Larry L. Gibson, MD
- Bradford S. Groves
- Eleanor Homesley\*
- Joan W. Meese\* (by family & friends)
- Joyce M. Walters
- Richard M. Walters



## Fellowships (\$1,000 or more)

- Deborah Adams
- Ivy L. Amos
- Helen Anderson
- Sina Baughman Applegate\* (by Clare E. Applegate)
- Sharon L. Arnett
- Aten & Mennetti Insurance Agency
- Betty Bacquet\* (by Meredith N. Stevens)
- Margaret G. Balyeat\* (by children)
- Dr. Donald N. Beddard
- Charma Behnke
- Craig Behnke
- Eric Behnke
- Heather Behnke
- F. Andrew Black
- Thomas C. Black\* (by F. Andrew Black)
- Donald C. Blasius\* (by friends & former Tappan company associates)
- Daniel L. Blay (by Joanne H. Blay)
- Dr. Joseph J. Bocka
- Dr. Louis Jeremy Brown\* (by Alice Sanford)
- Brigette A. Burnell
- William A. Calhoun\* (by family and friends)
- Samuel H. Campbell
- Clara I. Carew\* (by John H. Carew)
- John H. Carew
- Dan R. Carmichael
- David L. Carto
- Louise Allison Carto\* (by family & friends)
- Willis Frank Carto\* (by family & friends)
- Frances Christian (by Miles Christian)
- Miles Christian
- Helene H. Christiansen
- Judge Richard M. Christiansen
- Matthew B. Cockley\* (by Macky Cockley)
- Marjorie Sue Collins
- Rex E. Collins
- John W. Cook, Jr.
- Judith A. Croghan
- Thomas H. Croghan, MD
- John O. Crouse\* (by Hugh W. Crouse, II)
- Nancie K. Cummins (by Richard S. Cummins)
- Otis M. Cummins, III
- James D. Curry, MD
- Garry Davidson
- Aaron Davis
- Suzanne C. Davis
- Earle J. Deems
- G. E. (Dottie) Deems\* (by Earle J. Deems)
- Ann J. Deley\* (by Altrusa International of Mansfield)
- Thomas A. Depler
- Robert H. Enskat
- Katherine N. Fernyak
- Pamela S. Fleming
- William E. Flinn\* (by Dorothy B. Flinn)
- Gayle Gorman Freeman (by General Richard Green)
- Frances B. Gaubatz
- Nick Gesouras
- Judith Gibson
- Carl B. Gibson\* (by Dr. David M. Gibson)
- Dr. David M. Gibson
- Marie L. Gibson\* (by Dr. David M. Gibson)
- Earl H. Goetz
- Steve Goldman\* (by Bill & Carol Goldman)
- James C. Gorman
- Jeffrey S. Gorman
- Michele S. Gorman
- William Groggoza\* (by family & friends)
- John P. Gross (by Draffan family)
- Henrietta M. Hainer\* (by Elizabeth H. Prestel)
- W.R. Hainer\* (by Elizabeth H. Prestel)
- Mariann S. Hand
- Cameron Haring
- Ruth Oestreich Harsch\* (by Eugene C. Harsch)
- Albert W. Hartman\* (by family and friends)
- Jill Hand Hautzenroeder
- Jon Hautzenroeder
- Frederick R. Heifner\* (by family and friends)
- Geneva C. Heifner\* (by Pamela H. Siegenthaler)
- Oliver P. Heller\* (by family and friends)
- James D. Henson
- Pricilla W. Herbert
- C. J. Hire
- Phyllis F. Hire
- Becky Hoffman (by Dr. William C. & Ruth Newman)
- Ed Hoffman (by Dr. William C. & Ruth Newman)
- Fred B. Hout
- Edith B. Humphrey
- William F. & Kathleen C. Hurdle
- Dr. Norman & Heidi Jones
- John J. Kastelic
- Margaret E. Kay (by Thomas Kay)
- James W. Kehoe
- George H. Keyser\* (by Barbara Keyser)
- Ann L. Konstam
- Janice L. Kuhn
- Marion W. Lederer\* (by Robert W. Lederer)
- Robert L. Lee
- Timothy L. Lehman
- David Letizia (by Pete & Susan Bailey)
- Daniel K. Lichtenstein\* (by Sally S. Lichtenstein)
- L.O.L.'s (by Thomas & Margaret Kay)
- Robert E. Mabee
- Mansfield Assemblies
- A. Robert Matthews
- E. William McCarrick
- James McCormick\* (by Nanciann McCormick)
- Nanciann McCormick
- Pauline Keller McKinney\* (by Barbara Keller Lederer)
- Betty L. Massa
- E. Tom Mattox
- Joan Watson Meese
- Robert B. Meese
- Leona M. Miles
- National City Bank
- Ohio Horsemen's Council, Richland County Chapter
- Ray Piar
- Glenna R. Plotts
- David Pollock (by Jack Pollock)
- David Pollock\* (by family & friends)
- Delight Patricia Poth\* (by Dr. James Jones)
- Burton L. Preston (by Prudence Preston)
- Burton R. Preston
- W. Lee Preston (by Burton Preston)
- John Bradley Rhind
- Betty D. (Bets) Risser
- Dell M. Robinson (by John Robinson)
- John Robinson
- Joe R. Roby
- John S. Roby
- Joan G. Ross (by W. Thomas Ross)
- Allen M. Sanford
- Irene McCanne Sanford\* (by Allen M. & Henry M. Sanford)
- Henry B. Sanford\* (by Allen M. & Henry M. Sanford)
- Jean U. Sauter
- Rev. Clifford Schutjer
- Patricia Schutjer, PhD
- Angela Scurci
- Kyle Evan Shaw\* (by Douglas & Judith Brunk)
- Charles Patrick Siegenthaler\* (by Sally S. Lichtenstein)
- C. Peter Siegenthaler (by Sally S. Lichtenstein)
- Mary Mead Siegenthaler (by Sally S. Lichtenstein)
- Clara H. Siegenthaler
- John H. Siegenthaler
- Pamela H. Siegenthaler
- Thomas A. Siegenthaler
- Thomas A. Siegenthaler\* (by family and friends)
- Thomas R. Siegenthaler
- Peter A. Sminchak\* (by family & friends)
- Janet B. Nicely Smith (by Rev. Wray C. Smith, D.D.)
- Rev. Wray C. Smith, D.D. (by Janet B. Nicely Smith)
- David J. Strub
- Gary R. Stroup
- Richard G. Taylor
- U of M/OSU (by F. Loyal Bemiller & O.M. Cummins, III)
- Michael Vucelic (by Inge S. Vucelic, Ph.D.)
- Martha A. Walter (by Richard L. Walter)
- Richard L. Walter
- Jean E. Welge
- Merris A. Welge, Jr.
- John W. Welsh
- Betty E. Wells
- Fred J. Wiecher, MD
- Doris Williams
- J. George Williams

\* Contributed in memoriam





## MEMORIAL & HONOR GIFTS 2020

- Mr. Ron Abbot
- Dr. Ron Abrams
- Mr. Matt Adair
- Mrs. Patricia Adair
- Ms. Teresa Alt
- Ms. Ivy L. Amos
- Mrs. Lucy A. Amsbaugh
- Mr. and Mrs. Eric Behnke
- Mr. and Mrs. Frank L. Benham
- Mr. Dave Bettles
- Mrs. Karen Bierly
- Ms. Katy Bonnin
- Ms. Billie Brandon
- Ms. Carolyn Caldwell
- Mrs. Courtney Campbell-Reich
- Mr. Grady Campbell
- Mr. Robert J. Cassity
- Mr. and Mrs. Michael Chambers
- Ms. Patricia A. Chilcote
- Cleveland Financial Group
- Ms. Christine Cockley
- Mr. and Mrs. Robert A. Cohen
- Mrs. Barbara Collins
- Mr. John Corlett
- Mrs. Nancie Cummins
- Mrs. Polly Davis
- Mr. Dorey Diab
- Ms. Jeanine P. Donaldson
- Mrs. Beverly E. Doty
- Mr. and Mrs. Philip S. Downs
- Mr. and Mrs. Clarence E. Ellis
- Mrs. Lynn E. Fahmy
- Mr. and Mrs. John C. Fernyak
- Dr. Susan E. Fernyak, MD,MPH
- Ms. Margi Finnegan
- Ms. Jana S. Fisher
- Mrs. Pamela S. Fleming
- Mrs. Frances B. Gaubatz
- Mrs. Susan Duncan Gentile
- Mrs. Sally J. Gesouras
- Mr. and Mrs. Gilbert A. Orr
- Ms. Carol R. Giltz
- Mr. Greg Glasser
- Mr. and Mrs. Charles Gleaves
- Mr. and Mrs. Michael V. Grieves
- Ms. Joanne Hall
- Ms. Erin Hecht
- Ms. Lisa Hecht
- Mrs. Mary E. Henry
- Mr. and Mrs. Charles C. Herrick
- Ky Beckstett Hilliker
- Mrs. Marilyn Hixson
- Ms. Amy Hockett
- Ms. Amanda Huggins
- Mrs. Mary Jo Hull
- Mr. and Mrs. Joseph E. Humphrey
- Ms. Barbara J. Huston
- Dr. and Mrs. Norman Jones
- Ms. Emily Westbrook Jordan
- Mrs. Nancy Joyce
- Mr. and Mrs. Harold E. Kahl
- Mr. and Mrs. Gary P. Kennedy
- Ms. Deborah Kimball
- Mr. Stephen R. Knowlton
- Mr. Nicholas J. Kozimor
- Mr. and Mrs. David Latchuk
- Mr. Philip K. Lichtenstein
- Mrs. Kathleen Lufler
- Manairco, Inc.
- Mansfield Richland County Public Library
- Mr. and Mrs. Richard McCready
- Mrs. Jeanne Meisse
- Mr. and Mrs. Joe Melnik
- Ms. Kimberly Ann Mihan
- Mr. Larry Miller
- Mrs. Olive L. Miller
- Mr. Steven S. Miller
- Ms. Janny J. Nauman
- Mr. Ronald E. Odson
- Ms. Cynthia B. O'Neal
- Ms. Iris M. Ossakow
- Ms. Mintz-Ossakow
- Mr. and Mrs. Phillip A. Plummer
- Mrs. Murl Preble
- Ms. Lori Ramey
- Mr. and Mrs. Mark Reisdorf
- Rhyno Contract LLC
- Emily Richardson
- Roby Foster Miller & Earick Ins. Co.
- Ms. Gretchen Rohm
- Mrs. Salli Rohm
- Mr. James Sauter
- Mr. James L. Shaffer
- Rev. and Mrs. David S. Sipes
- Mr. Benjamin Smith
- Christopher Smith and Emily Richardson
- Mrs. Janice L. Smith
- Ms. Lauren Smith
- Mrs. Linda H. Smith
- Mr. and Mrs. Mark C. Smith
- Ms. Susan L. Spohn
- Ms. Steph Stephenson
- Mr. Gary R. Stroup
- Mr. and Mrs. John H. Sumner
- Ms. Cristine M. Sutter
- Mr. & Mrs. John A. Sutter
- Ms. Rosemary J. Sutter
- Mrs. Stella F. Sutter
- Mr. and Mrs. Nicholas Taddeo
- Ms. Maura J. Teynor
- Ms. Rebecca H. Thornton
- Mr. Albert Touby
- Ms. Katherine Truitt
- Vanguard Charitable
- Ms. Joan Walsh
- David and Julia Welsh
- Mrs. Frances K. Welsh
- Mr. Marc Wilkinson
- Ms. Sarah Wilkinson

**The Legacy Society** was established by the Board of Trustees in the year 2000 to recognize individuals during their lifetime who have made plans to leave a gift to this community in partnership with the Richland County Foundation. This gift may be through their estate plans, written in their will, including the Foundation as a future beneficiary of their IRA, insurance policy, remainder trust, or other similar planned gift.

The Richland County Foundation acknowledges the following generous people who have planned a legacy to their community through gifts that will eventually come to the Foundation for the benefit of others.

## LEGACY SOCIETY

- Pete H. and Susan Gallagher Bailey
- Bruce and Laurie Baker
- Bob and Natalie Beckert
- Vin and Jo Black
- Billie Brandon, JD
- Walter and Candice Chaffee
- David and Julia Crawford
- Dr. James\* and Joyce Curry
- **Don Edwards**
- Bonnie Elias
- **Jana S. Fisher**
- John F. and Lin H.\* Harkness
- Linda A. Hering
- Carol S. Kautz
- Thomas R. and Margaret\* Kay
- Dr. Joel Kaye
- Morjorie Kieffer
- Sarah S. Lichtenstein
- Dan and Barbara McBride
- Everett W. and Beverly Miller
- Allison C. Nunnally
- Richard H. Otto
- Stephen M. Shoup
- Robert\* and Margaret Soulen
- Judith E. Stroup
- Robert\* and Stella Sutter
- Ralph and Martha Turley
- Larry and Jean VonBlon
- Merris and Jean Welge

\* Deceased

**Bold Type** indicates new legacy member in 2020



## 2020 DONORS

### A

- Dr. Richard E. Adams (by Mr. Ron Abbot)
- Dr. Ronald Abrams
- Mr. Matt Adair
- Patricia Adair
- Debbi Adams
- Karen Adams
- Patricia Addeo
- Carol Allen
- Ms. Teresa Alt
- Alumni Roofing Co, Inc.
- Ivy L. Amos
- Lucy A. Amsbaugh
- George & Kelly Andress
- Ms. Christie Angel
- Ms. Jessica Angelas
- Frank & Janet Ardis, Jr.
- Val Ashcraft
- Ashland County Community Foundation

### B

- BAC Local #40-Mansfield
- Dr. & Mrs. James P. Bacon
- Susan Baker
- Bank of America Charitable Foundation, Inc.
- Mr. Justin Barasky
- James E. & Marianna Basting
- Janice Beppard
- Darcia Beer
- Eric & Charma Behnke
- Benevity Community Impact Fund
- Frank & Debbie Benham
- Mr. Glenn Bennet
- Mike & Tina Bennett
- Ken Berger
- Ken & Sherry Berger
- Jessica Berry
- Mr. Dave Bettles
- Karen Bierly
- Ms. Kyle Bierly
- Marlene Bisel
- The Robert & Esther Black Family Foundation
- Martha Jane Black

- Dr. Joseph J. Bocka
- Ms. Katy Bonnin
- Dr. & Mrs. Greg M. Bookwalter
- James & Amelia Boyd
- Brabson Library & Educational Foundation
- Billie Brandon
- Terry E. Britton
- Ms. Janet E. Brody
- Phillip Browarsky
- Charles G. Brown
- Diane Brown
- Emily M. Brown
- Helen Brown
- Ms. Marcia Brown
- Robert Brown
- The Honorable Sherrod Brown
- Tara Brown
- John & Alison Burkhardt Jr.
- Aidan Burns
- Brian Burns
- Sean & Amy Burns
- Kay Burrows
- Mr. Andrew Burton

### C

- Ms. Carolyn Caldwell
- Barbara Campbell
- Cheri Campbell
- Mr. Grady Campbell
- Mrs. Courtney Campbell-Reich
- Mr. Scott Cardwell
- Sandra Carr
- Audrey Carto
- David D. & Carolyn M. Carto
- Robert J. Cassity
- Judith King Castle
- Michael & Carol Chambers
- R. Chandat, LLC - Valero/Shelby
- Patricia Chilcote
- Katherine Chillemi
- Mrs. Holly Christie
- Civitan Club of Mansfield
- Civitan International
- George Clark
- Ms. Christine Cockley
- Mrs. Heather Cockley

- Bob & Paula Cohen
- Mrs. Brigitte M. Coles
- Barbara Collins
- Commercial Cutting
- Compassion In Action
- Deborah Koch Cooper
- Mr. John Corlett
- Mary C. Craig
- David & Julia Crawford
- Jennifer Crist
- Bruce Cummins
- O.M. Cummins, III
- Nancie Cummins
- Ms. Casandra Curtis

### D

- Melissa Dean Dallas
- Dennis A. Davis
- Polly Davis
- Mr. Thomas Davis
- Patricia K. DeCenso
- Ms. Shirley Deeb
- Jodie Dees
- Ms. Theresa Depperschmidt
- Dewine Family Foundation
- Mr. Dorey Diab
- Ms. Jeanine P. Donaldson
- Ms. Mallory Donaldson
- James Donnelly
- Beverly E. Doty
- Patty Pagnard Dowdy
- Mr. David Downing
- Judith Downing
- Phil & Ann Downs
- Mr. & Mrs. Thomas Dreher
- Matt & Jen Dudley

### E

- Mr. Gene Earick
- David & Leslie Eichinger
- Elliott Machine Works, Inc.
- Mr. Daniel Elliott
- Clarence E. & Karen Ellis
- Phyllis Elmo
- Ms. Joy Etter - Link
- Dr. Emily Exten

### F

- Lynn E. Fahmy
- Carrie Fanello

- James C. Fanello
- Carl & Annamarie Fernyak
- John & Katherine Fernyak
- Dr. Susan E. Fernyak
- Ms. Margi Finnegan
- First Energy Foundation
- Alma Fisher
- Jana S. Fisher
- Ms. Melissa Fittante
- Barb Fleeter
- Pamela Fleming
- Dr. Celia Flinn
- Kim Foster
- Dr. Scott & Jennifer Foster
- Cindy Fowler
- Mr. Louis B. Fox
- Rose G. Frangella
- Friends of Marilyn John
- Friends of the Mansfield-Richland County Public Library
- John G. & Margaret Fuffy

### G

- Frances B. Gaubatz
- Susan Duncan Gentile
- Nicholas & Sally Gesouras
- Drew & Cristen Gilbert
- Carol R. Giltz
- Mr. Greg Glasser
- Mr. & Mrs. Charles Gleaves
- Ms. Heather Glenn
- C. Eugene & Sara A. Goin
- Steve Goldman Foundation Inc.
- Mrs. Caroline Gonzalez-Brine
- Ruth Ann Good
- Jim & Linda Goode
- The Gorman Rupp Company
- Jeff & Michele Gorman
- Jay Goyal
- Ms. Sharon Granter
- Barbie Green
- BG Rich Green & Gayle Gorman Green
- Mr. Tommy Greene





- Mr. Winston Greene
- Ms. Jessica Gribben
- Mr. & Mrs. Michael V. Grieves
- Ms. Donna Griffith
- Mr. & Mrs. Ronald P. Gross
- Bradford Groves
- Jason Guilliams

## H

- Charles P. Hahn
- Ms. Joanne Hall
- Hamilton Insurance Group
- Mr. Bart Hamilton
- Mr. & Mrs. Brian Hamilton
- Suzanna Hammond
- Mr. & Mrs. David H. Harmon
- Pat Hartnett
- Margaret Haughey
- Ms. Erin Hecht
- Ms. Lisa Hecht
- Howard & Sally Henderson
- Mrs. Mary E. Henry
- James Henson
- Stephany Hepner
- Dr. Theresa Heringhaus
- Charles & Chris Herrick
- Hess Industries
- Laura Hester
- Lori Hewitt
- Mr. Richard Hibbard
- Mr. Kevin Hiebel
- Ms. Donna Hight
- Mrs. Theresa Hilbert
- Mrs. Cynthia A. Hill
- Ky Beckstett Hilliker
- Tim & Abby Hilterman
- Mrs. Amy Hiner
- The Hire Family Foundation
- Marilyn Hixson
- Ms. Amy Hockett
- Clarie Holloway
- Mr. & Mrs. William C. Hope
- Hospice of North Central Ohio, Inc.
- Bradley & Lee Hostetler
- Ms. Amanda Huggins
- Carl F. Hughes
- Mary Jo Taylor Hull
- Joseph E. & Edie Humphrey
- Huntington National Bank
- William & Kathleen Hurdle
- Barbara J. Huston

## I

- iHeart Media, Inc.
- Industrial Solutions

## J

- Dr. Bruce Jackson
- Mr. Garland John Gates
- Mr. Douglass Johnson
- Leah Johnson
- Leah R. Jones
- Dr. & Mrs. Norman Jones
- Barbara Zaugg Joudrey
- Mr. & Mrs. Michael Jourden
- Nancy Joyce

## K

- Harold & Norma Kahl
- Ann S. Kania
- John & Patricia Kastelic
- Katie Kelly
- Gary P. & Jan T. Kennedy
- Jennifer & James Kight
- Ms. Deborah Kimball
- Ms. Yolanda Kirschner
- Mr. Stephen R. Knowlton
- Robert & Mary Ann Konstam
- Nicholas Kozimor

## L

- David Latchuk
- Robert W. Lederer
- Mia Lewis
- Lexington Alumni Association
- Mr. Philip K. Lichtenstein & Mrs. Barbara Lichtenstein
- Mr & Mrs. David Liles
- Ms. Margaret Lin
- Lind Outdoor Advertising Company
- Mrs. Kristine Lindeman
- Ms. Ruth Ann Lindsey
- Anne Loucks
- Mrs. Kathleen Lufler

## M

- Mr. Preston Maddock
- Irene Maginniss
- Malabar Farm Foundation Board Members
- Mansfield Art Center
- Mansfield Aviation Club
- Mansfield Engineered Components
- Mansfield LMCC
- Mansfield Reformatory Preservation Society
- Mansfield Richland County Public Library

- Mr. Eric Marotta
- Siera Marth
- Kristie Massa
- Jackie Maynard
- Glen McClelland
- Ms. Cheri McCreedy
- Marilyn McCreedy
- Mrs. Robin McCullough-Bade
- Ms. Deborah McDaniel
- Danielle Hopkins McGinty
- Harvey & Carol McGowan
- Mr. Richard McGraw
- Mr. & Mrs. Gary L. McGuin
- Gunther & Jeanne Meisse
- Joe & Rhonda Melnik
- Mennel Milling Company
- Judith A. Merrill
- MHS Industrial Supply
- Midstate Multi Media
- Midwest Automotive Trucking
- Mightycause Charitable Foundation
- Ms. Kimberly Ann Mihan
- Larry Miller
- Michael Miller
- Olive L. Miller
- Steven S. Miller
- Milliron Auto Parts Inc
- Milliron Foundation
- Mind Body Align LLC
- Mr. & Mrs. James Miraldi
- MOMS Club of Mansfield
- Ms. Roberta Moore
- Mr. Michael Moree
- Joseph H. Mudra
- Patrick & Jana Mulherin
- Julie Mulroy

## N

- Janny Nauman
- Fred Nevill
- North Central State College
- The North End Community Improvement Collaborative, Inc.
- Gary A. & Lucy B. Negin
- Mr. & Mrs. Barry J. Nelson
- Network for Good
- Nicholi LLC
- Mr. Aaron Nicolas
- NOPEC Foundation, Inc.
- North Central Ohio Building

## O

- Cynthia B. O'Neal
- Mr. Ronald E. Odson
- Ohio State University
- Mr. Doug Olson
- Ed & Pat Olson
- Gilbert A. and Sue C. Orr
- Iris Mintz Ossakow

## P

- Ms. Kimberly Padilla
- Robyn & Chris Palmer
- Park National Bank
- Bob & Erica Parnisari
- Ms. Marcy Parry
- Duana Jolliff Patton
- Donna Payne
- Carol E. Payton
- Ms. Madeline Penwell
- Mr. & Mrs. Thomas H. Peterson
- Monica Phillips
- Ray & Rani Piar
- Pineridge Investments, LLC
- Glenna R. Plotts
- Mr. Phillip A. Plummer
- Murl Preble
- Maureen Prinz
- Mr. Harold Pritchett
- The Pryor Foundation
- Jonathan B. Pulcini

## R

- Maria Sarath Ragucci
- Ms. Lori Ramey
- Marden Ramos & Sarah Horrigan-Ramos
- Drs. Mark & Sarah Redding
- Mark & Pam Reed
- Regional Manufacturing Coalition
- Lydia Reid
- Mrs. Linda Reisdorf
- Mr. & Mrs. Mark Reisdorf
- David Remy
- Renaissance Charitable Foundation
- Rhyno Contract LLC
- Emily Richardson
- Richland County Democratic Executive Committee
- Dr. John & Mary Riedl
- Hillary Rinehardt
- John C. Roby
- Tom & Melinda Roepke
- Ms. Gretchen Rohm



- Richard & Salli Rohm
- Rotary Club of Mansfield
- Theresa Roth
- Laura Rushton

**S**

- Ms. Amy Sauder
- Mr. James Sauter
- Matt & Rachel Schag
- Dr. & Mrs. William Schamadan
- Brian & Krista Schmidt
- G. Stanford Schneider Trust
- Schraedly Marine Inc.
- Alicia Schulz & Henry Keultjes
- Jodi Scott
- Ms. Melanie Seaman
- Lois Senokozlieff
- Shiva Sethi
- Mr. & Mrs. James L. Shaffer
- Shelby Foundation
- Ms. Jotika Shetty
- Clarence Shoemaker
- Sherrel M. Shoffstall
- John & Sondra Siegenthaler
- Thomas R. & Pamela H. Siegenthaler
- David & Peggy Sipes
- Lori Sjostedt
- Dr. Jonathan Skarie & Dr. Emily Exten
- Benjamin Smith
- Mr. Christopher M. Smith & Emily Richardson
- Diane Lee Smith
- Jan Smith
- Ms. Lauren Smith
- Mr. Logan Smith
- Mark & Debbie Smith
- Matthew P. & Linda H. Smith
- Snyder Funeral Home
- Cindy Lou Yoder Soliday
- Kelly Spencer

- Spherion
- Ms. Susan L. Spohn
- Dusty Spon
- Les A. & Bonita S. Spring
- Mr. & Mrs. Matthew Stanfield
- Mr. Ken Stanley
- Darrell & Brenda Starr-Jude
- State Farm Foundation
- Cassandra Stein
- Ms. Steph Stephenson
- Sarah Steward
- Edwin Stiffler
- Mr. Edwin Stockwell
- Ms. Kristen N. Stotts
- Mr. Brad Strong
- Gary R. Stroup
- John & Suzanne Sumner
- Cristine Sutter
- John A. & Theresa R. Sutter
- Rosemary J. Sutter
- Stella Sutter

**T**

- Mr. & Mrs. Nicholas Taddeo
- Mr. & Mrs. Ian Talbott
- Estate of Richard Taylor
- Maura J. Teynor
- Rebecca H. Thornton
- Eli Thrasher
- Albert Touby
- Ms. Katie Trent
- Elizabeth Tromler
- Ms. Katherine Truitt
- Ms. Emily Turlo
- Mr. Patrick Turlo

**U**

- Richard & Sally Uhde
- United Brotherhood of Carpenters
- United Way of Richland County

**V**

- Vanguard Charitable
- Dr. Gregory S. & Susan Vigesaa
- Lawrence W. & Jean L. VonBlon

**W**

- Dr. Blake D. & Gere C. Wagner, Sr.
- Ms. Joan Walsh
- Mary Ellen Walter
- Wappner Funeral Directors
- Allie Watson
- Ms. Paula Diane Watson
- Barbara A. Webb
- Sue Weirich
- Merris & Jean Welge
- David & Julia Welsh
- Frances K. Welsh
- Deanna West-Torrence
- Ms. Emily Westbrook Jordan
- Mr. Marc Wilkinson
- Mark Wilkinson
- Mr. Matthew Wilkinson
- Ms. Sarah Wilkinson
- Ms. Veronica Williams Payne
- Doris Williams
- Ms. Holly Williams
- Brad Wilson
- James R. Winkler
- Ms. Joan K. Wirstrom
- Amy Witchey
- Mr. Denny Wojtanowski
- WoMama
- Ms. Cindy Wood

**Y**

- Janene A. Yeater
- Sheila York
- Ms. Ashley Young
- YourCause, LLC Trustee for Marathon Petroleum Co.



The Foundation boardroom was empty but education for local nonprofit leaders continued. Two presentations were provided to nonprofit leaders as well as an Estate Planning webinar to the public by Attorney and Financial Planner Jack Stewart.







**RICHLAND COUNTY**  
**FOUNDATION**

181 South Main Street  
Mansfield, OH 44902  
419.525.3020 phone  
419.525.1590 fax

[richlandcountyfoundation.org](http://richlandcountyfoundation.org)



NON-PROFIT  
ORGANIZATION  
U.S. POSTAGE

**PAID**  
MANSFIELD, OH  
PERMIT NO. 193



*The Richland County Foundation has been recognized for having organizational and financial practices that are in compliance with National Standards for U.S. Community Foundations.*

