



# **WASTE MANAGEMENT SERVICES**

## **I & E COMMITTEE NOV 2023**



**ROTORUA  
LAKES COUNCIL**

# STRATEGIC OUTCOMES

- Guided by Environmental Plan goals
- Aligned with national policy statements
- **RLC Waste Management and Minimisation Plan 2022-2028**
  - Protection of public health
  - Support Environmental Plan/Te Āo Māori
  - Assist circular economy



Community initiated clean-up – Rotoiti residents

# CURRENT STATUTORY REQUIREMENTS

## Waste Minimisation Act 2008

- A territorial authority must:
  - Promote effective and efficient waste management and minimisation within its district
  - Undertake on-going assessment of waste generation within its District
  - Adopt a waste management and minimisation plan and implement actions
- A TA may make appropriate bylaws consistent with its WMMP objectives
- A TA may spend the levy money it receives under section 31 (FY 2022/23 = \$773,233 - FY 2023/24 = \$927,879 )
  - (a) on matters to promote or achieve targeted waste minimisation; and
  - (b) in accordance with its waste management and minimisation plan objectives.





# GOVERNMENT WASTE MANAGEMENT PATHWAY TO 2035 - CHALLENGES

**2022**

- Consultation on kerbside standardisation
- New Waste Strategy (and waste legislation policy decisions)
- Waste infrastructure plan published
- Landfill gas capture feasibility investigations commence

**2023**

- Increased investment in resource recovery available
- Organic waste reduction programmes

**2024**

- New waste legislation enacted
- National waste reporting programme required
- More council kerbside organics collections required
- More new organics recovery facilities to be created

**2025**

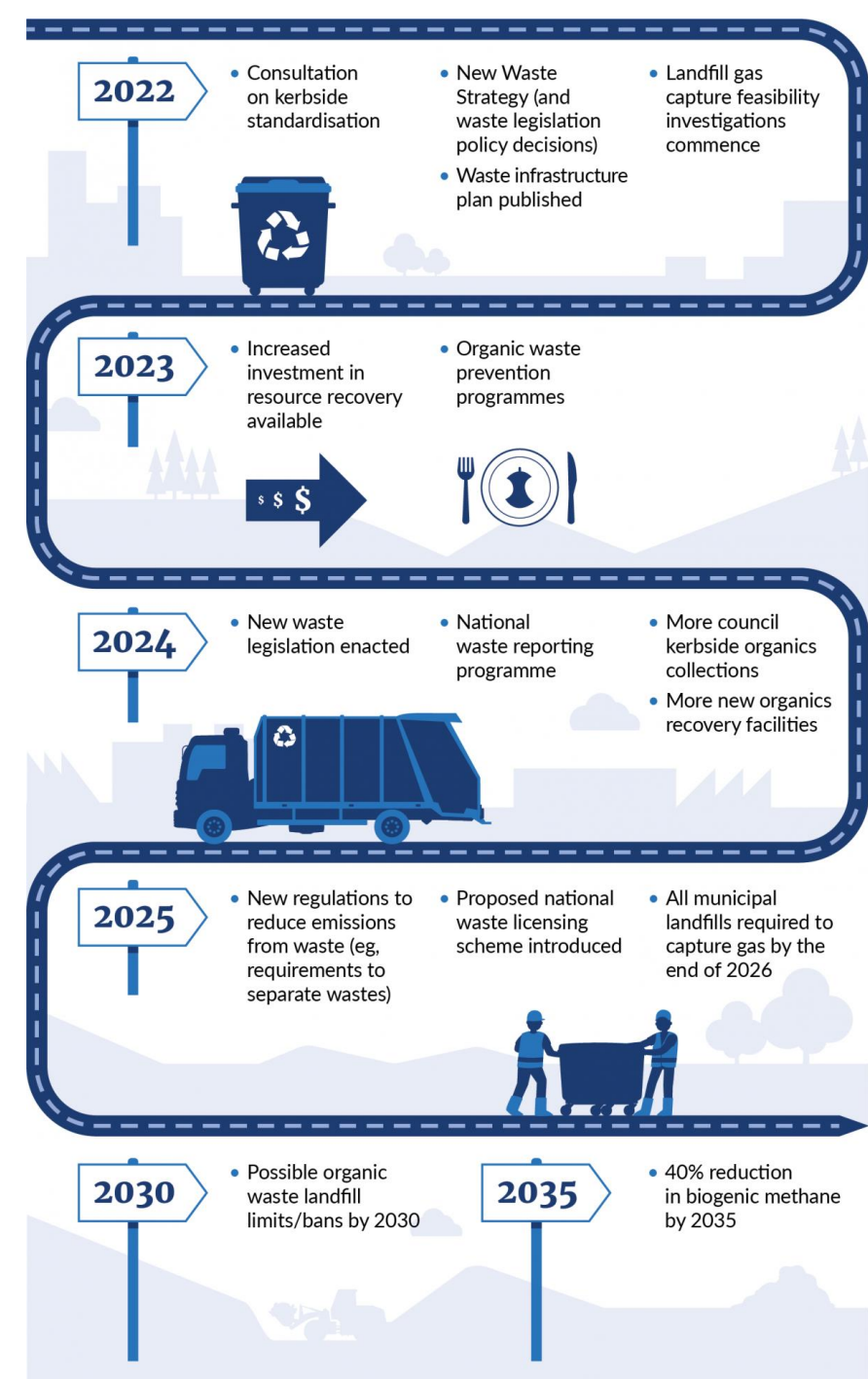
- New regulations to reduce emissions from waste (e.g. requirements to separate wastes)
- Proposed national waste licensing scheme to be introduced
- All municipal landfills required to capture gas by the end of 2026

**2030**

- Possible organic waste landfill limits/bans by 2030

**2035**

- 40% reduction in biogenic methane by 2035



# PROPOSED NEW LEGISLATION

## to replace the WM Act and the Litter Act

**Waste Legislation Cabinet Paper** (the intention for the bill to be introduced by early 2024 and enacted by 2025) ??

**Anticipated;**

### **Seeking Cabinet decisions to:**

- Align the overarching purpose and principles of the new legislation with the purpose and principles of the new waste strategy
- Name the new legislation the “Responsibility for Reducing Waste Act”
- Specify central government’s main responsibilities in relation to the national direction, stewardship and investment in waste and resource recovery
- Appoint the Environmental Protection Authority as the central government waste regulator
- Outline minimum obligations for local government to improve clarity of their legislated role and responsibility
- Strengthen the legislative weighting of the proposed strategic planning framework to support delivery of the new waste strategy goals and priorities
- Align local government waste planning with the national strategic planning framework
- Set waste management reporting requirements for central and local government.



**ROTORUA**  
LAKES COUNCIL

# PRODUCTS AND MATERIALS

- Regulating products and materials to promote circular economy
  - Product bans on a case-by-case basis
  - Landfill bans on some products/mandatory recycling e.g. e-waste
  - Information on environmental performance e.g. prescribed labelling requirements on products
  - Extended producer responsibility e.g. voluntary and regulated product stewardship schemes



# WASTE TRACKING – COMPLIANCE COSTS

- A national licensing scheme for the waste and resource recovery sector
  - Wide ranging coverage from transport to disposal operators
- National standards to regulate disposal and resource recovery
- Tracking systems for waste
  - Chain of custody
- Controls for the import and export of waste
  - Alignment with international agreements



# WASTE LEVY

## Collection, administration, data, and general compliance regime

- Levy proposals (collection, administration, and monitoring)
  - Levy should be applied to any facility for the final disposal of waste
  - Environmental Protection Agency to become the levy administrator and regulator
- Improved record-keeping and reporting provisions - **(new regulations as of 1 July 2024)**
  - National waste data framework
  - Applied to all operators/authorities
  - Territorial authorities will need to report on their levy spending, as well as their adopted waste minimisation activities and their outcomes trends.
- Compliance regime – a modern and effective framework to support a circular economy
  - Widened enforcement powers for litter control and illegal dumping





# REGIONAL MATTERS (HIGH LEVEL)

- All BOP District Council Waste Managers communicate regularly
- The regional group are working collaboratively on regional infrastructure analysis (Validation of Business Case Depended)
  - Initial study funded by Tauranga City (RLC keep a watching brief)
- No regional landfill within BOP
- Regional issues expected to be highlighted by the infrastructure analysis:
  - Recoverable construction and demolition waste (CnD waste) going to landfill
  - All councils moving to organic waste collections, no regional facility available in BOP – processed into soil conditioner, viable replacement for most refined chemical fertilisers
  - Limited availability of land for new waste recovery opportunities (facilities)



# RLC ACTIONS TO-DATE (2016-23)

- Landfill unviable/high risks closed and capped (2018)
- Biosolids from SS diverted to fertilizer from 2018/19 (10,000 t p.a.)
- Kerbside waste collection introduced 2016/17 (bag system abandoned)
- Kerbside household recycling collection introduced 2016/17
- Community drop – off stations improved and maintained

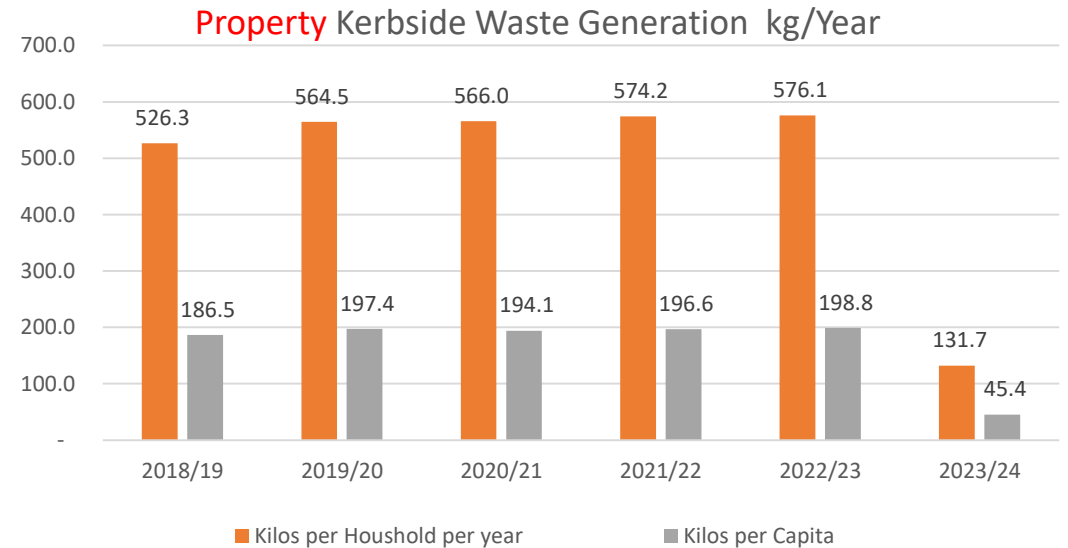


# GENERAL MUNICIPAL WASTE IN ROTORUA

Municipal Waste Management and Minimisation Trends (Rounded)					
Year	Property Waste p.a.	Recovered p.a.	Total Property Waste	Total Municipal incl. Biosolids (10,000t)	Municipal Waste Diversion Rate
2015/16	15,000	3,000	18,000	28,000 *	10%
2019/20	17,000	5,500	22,500	32,500 **	47%
2021/22	17,000	5,200	22,200	32,200	47%
2023/24 Proj	16,500	5,000	21,500	31,500	47%
2025/26 Proj	17,000	13,000 (incl FOGO)	22,000	32,000	71% (Target)

Notes: 2015/16 Prior to Kerb side system and open landfill. 2019/20 Kerbside collections and landfill capping biosolids diversion

- Commercial enterprise involved in waste management
  - Council handles approx. 50% of total waste in Rotorua (biosolids, kerbside collection, community drop locations, landfill RTS) – FOGO underway (diversion to over 70%)
- WMMP to be reviewed in 2026 set next goals



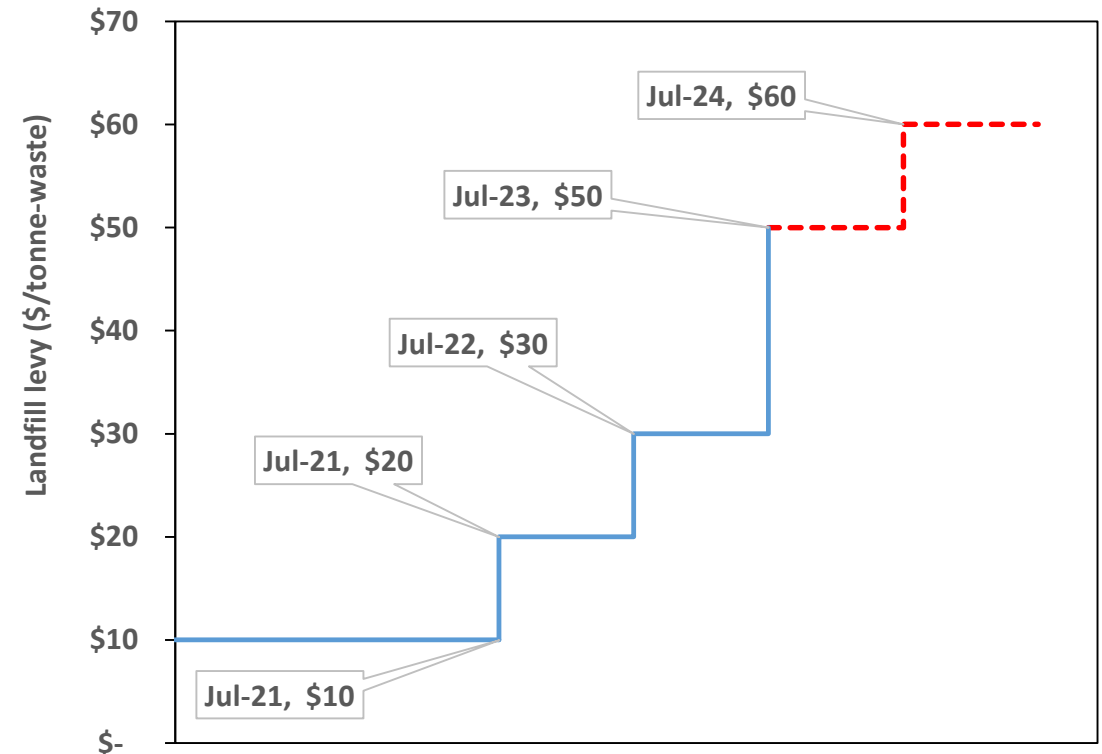
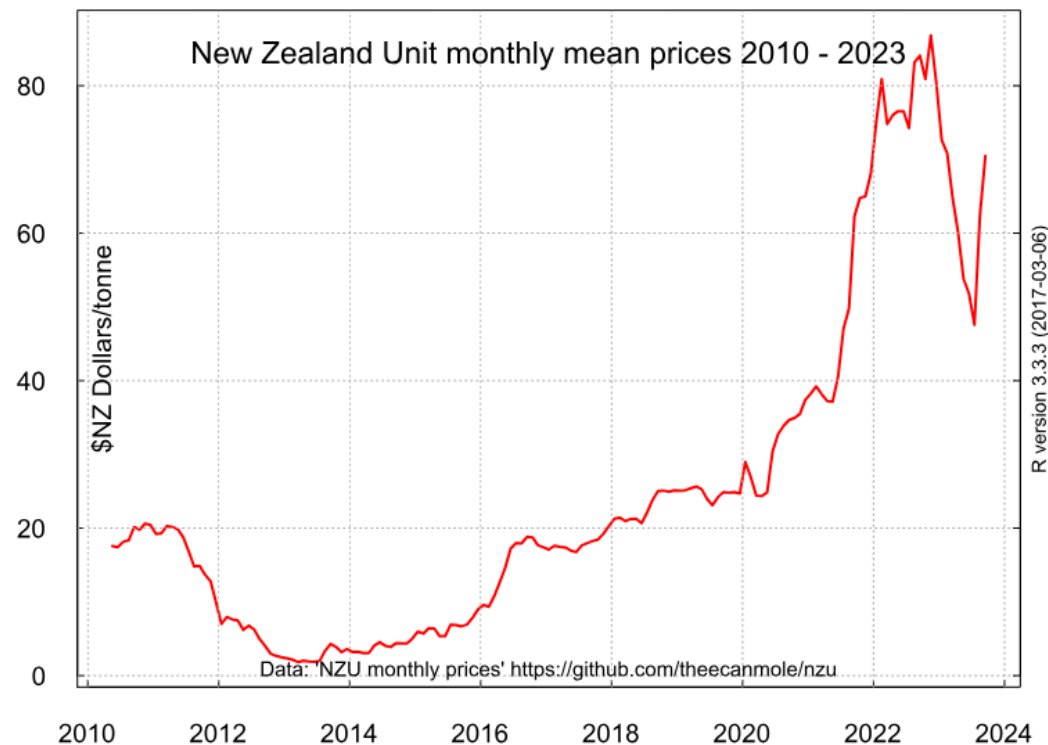
# INCREASING COSTS - ETS AND THE WASTE LEVY - LANDFILLING DIVERSION

*Unprecedented rise in landfilling costs due to landfill levy and emissions trading scheme (ETS)*



*Landfill costs expected to increase by a million dollars per year by 2024*

**COMPRISE OVER 60% OF LANDFILLING COSTS AND INCREASING**



# ETS SETTINGS

- Starting from the December 2023 auction, the number of emissions units available at auction will be reduced
- Auction price floor settings will rise from the current level of \$33.06 to \$60 in December 2023. It will be \$64 in 2024
- A two-tier cost containment reserve (CCR) trigger price will be introduced. In December 2023, the CCR trigger price will be \$173 rather than current trigger price of \$82
- In 2024, the total CCR volume will decrease from 8 million NZUs under the current settings to 7.7 million NZUs, and will continue decreasing in the following years.

CONTRACT	LAST/FIX
NZUs - April 2024	70.92
NZUs - April 2025	75.88
NZUs - April 2026	81.20
NZUs - April 2027	86.89
NZUs - April 2028	92.99



# MUNICIPAL WASTE SERVICES COST

ELEMENT	COST	NOTES/COMMENT
Services and Operations	\$10.2 m	Landfilling/taxes/GCPI and recycling market prices pressures
Biosolids (SS)	\$1.2 m	Part of waste water services – regulatory pressures
Personnel	\$0.3 m	Services management and behaviour influencing
Indirect (Depreciation/Interest/OHs)	\$1.0 m	
<b>TOTAL (rounded)</b>	<b>\$12.7 m</b>	
Funded by		Targeted rate and general rate

# FOGO – PROPOSED START 01 JULY 2025

Waste stream	Current	Proposed
Glass (blue)	Fortnightly	Fortnightly
Recycling (Yellow)	Fortnightly	Fortnightly
Rubbish (Red)	<b>Weekly</b>	<b>Fortnightly</b>
FOGO (Green)	-	<b>Weekly</b>

## Fortnightly rubbish collection


- to reduce collection costs
- to support FOGO diversion

### FOGO Bin



**Multiple bin** options (at extra costs) to suit different households/requirements

### Rubbish Bin



Options for **bigger or multiple rubbish bins** at extra costs

# CHALLENGES IDENTIFIED, ACTIONS UNDERWAY

- Relocation of the Recycling Centre – consolidated Resource Recovery Park needed, community focal point for waste minimisation and sustainability
  - Re-use shop (\$200+K revenue) 50% returned to Council
  - Kerbside recycling pre-sort and consolidation
  - Glass bunkers
  - Public drop off facilities
  - Option for refuse drop off and improved diversion
- Event waste management planning
  - Planning template and resources in development for event organisers before consenting



Glass bintainers – Tamatea St, Rotoiti



# LITTER AND ILLEGAL DUMPING

- Litter reduction campaigns
  - 'Pink bag' campaign – community clean-up support
  - 'Take it home' campaign – natural environments
  - Litterbin optimisation – placing where they're needed most
- Illegal dumping - \$187k (2022-23)
  - Following up on people identified as connected to rubbish found – behavior influencing
  - Patterned behavior – use of cameras to increase
  - Recovering clean-up costs from offenders
  - Issuing infringements where possible



Miss Rotorua rubbish clean-up, Mountain Road



# WASTE MINIMISATION BEHAVIOUR ACTIVITIES

## Recent and current:

- Home composting – workshops and resource access
- Textiles – impact information, re-purposing workshops
- Litter – resources and support to community clean-ups
- Recycling – school sessions on request, videos with kids
- Pop-ups – on request, activation events
- RLC Civic Centre – reducing our waste too





# WASTE MINIMISATION BEHAVIOUR ACTIVITIES

## In the pipelines...

- Repair Café – planning two pilot events to encourage community interest
- House of Science toolkit sponsorship – 'A Load of Rubbish'
- Reusables campaigns – cups, nappies
- Event waste – resources for event organisers

