

CUB

By Aerolite



EXPLORE YOUR HORIZONS

Ultra-Lite Expandable Travel Trailers



CUB ULTRA-LITE EXPANDABLES

Eight floorplans starting at 2862 lbs, loaded with standard features.

For active families on the go, Cub Expandables add sleeping space without the additional length and weight of traditional travel trailers. The ultra-lite design and aerodynamic profile make Cub a dream to tow. Plus, the interior of Cub is packed with high-end features, including designer décor, large kitchens with abundant storage, expansive living spaces and comfortable sleeping areas. So, when it is time for your next travel trailer, choose Cub, your best value in ultra-lite expandable travel trailers.



Now Even MORE STANDARD Features!

- Auto-pop half dome bunk end with futon mattress
 - 13.5 BTU air conditioning
 - AM/FM/CD player with MP3 port* & two speakers
 - A&E 8300 series awning
 - TV antenna with cable prep
 - Microwave
 - Bunk end lights with fan
 - Oven with three burner range
 - Double door refrigerator
 - Spare tire
 - Gas/electric water heater with DSI
 - Skylight in bath
 - Tub surround
 - Diamond plate rock guard
 - Exterior spray away
- *See dealer for MP3 port availability in standard stereo

MORE Standard Features - MORE Value For Your Dollar!





THE INDUSTRY'S BEST EXPANDABLE

Revolutionary Auto-Pop Tent



Cub, the leading innovator in ultra-lite RV technology, and Therm-a-Rest®, manufacturer of premium outdoor equipment, have teamed up to develop the innovative new "Auto-pop" tent. Cub chose Therm-a-Rest® to design this ground-breaking product because of the company's 30-plus years of experience enhancing the comfort of outdoor enthusiasts. The result is an RV tent that features easier setup, more livable comfort, and greater protection than anything that's come before.



Key-Locking Bunk End Doors

Key-locking "Easy Latch" tent doors eliminate the use of unsecured, crank-style door hardware. Simply unlock the tent door, push the release button, open the cam arm and drop the door into the open position.



Self-Supporting Bunk Ends

Cub Expandable's revolutionary bunk ends are self-supporting, suspending the 60" x 80" queen bed from the wall of the trailer. Cub does not require exterior tent poles to support the bunk ends. Plus, each bed has a 1200 lb. capacity, the highest in the industry!

EXCLUSIVELY CUB

CUB - THE INDUSTRY'S BEST FEATURES & BEST OPTIONS

POPULAR OPTIONS



A. Harmony White Cabinetry Package

An attractive Harmony White Cabinetry Package with Cherry plank linoleum is available with any Cub decor for a clean, stylish look.

B. Extreme Outdoors Off Road Package

For those who need extra ground clearance for off road campsites, our Lift Kit Package includes an 5" body lift kit, extended jack and stabilizers, double entry step, and LT235/75R15 mud and snow tires. (NA 160)



B



C



D



E

C. Exterior Grill

Take your cooking outside with an exterior barbecue grill.

D. Industry Exclusive! - AudioLite™ Speakers

Cub features AudioLITE™ exterior speakers by Intier.® Utilizing the latest technology, AudioLITE™ speakers provide crisp, undistorted sound. Plus, they are impact resistant and waterproof.

E. Aluminum Rims

Upgrade your Cub Expandable with 5-spoke aluminum rims.

ONLY FROM

CUB

AND

THULE
SWEDEN

SMART RV

Thule, the industry leader in cargo management systems for cars and trucks, has partnered with Cub to create the Smart RV System. This patented system allows Cub owners to create a functional outdoor living area that's easy to set up and enjoy. The Smart RV system uses a number of factory-installed anchor pods mounted on the exterior of the trailer. The accessories mount to the pods in seconds using Thule's innovative quick-release latch system. (Not available with optional lift kit feature.)



The optional **Thule Smart RV Package 1** includes:

- Table with 2 chairs
- 2 Universal hooks
- Countertop
- Trash bin
- Table caddy

The optional **Thule Smart RV Package 2** includes:

- Table with 2 chairs
- Trash bin
- Table caddy

Smart RV Table and Chairs

48" x 24" heavy duty polyethylene table top and adjustable legs, folds in half for storage. 2 black, weather-resistant camping chairs



Smart RV Trash Bin
Fits 13 gallon garbage bags and collapses for storage



Smart RV Countertop
40' x 16' polyethylene countertop with



Smart RV Universal Hook
2 hooks per package with

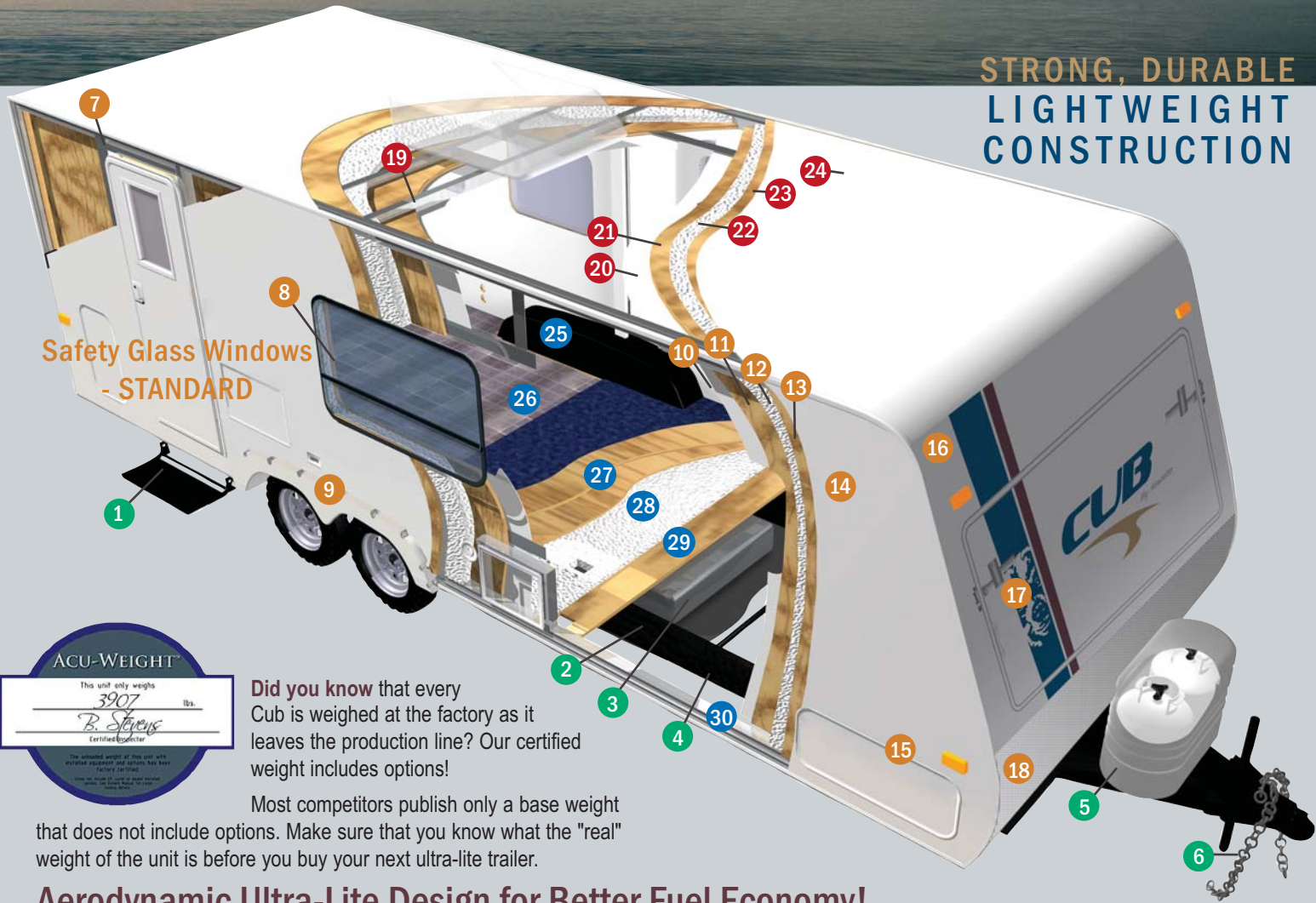


Smart RV Table Caddy

Attaches to Smart RV Table, and can stand alone to be used with indoor tables

FULLY LAMINATED 6-WAY ALUMINUM FRAMED CONSTRUCTION

**STRONG, DURABLE
LIGHTWEIGHT
CONSTRUCTION**



Did you know that every Cub is weighed at the factory as it leaves the production line? Our certified weight includes options!

Most competitors publish only a base weight that does not include options. Make sure that you know what the "real" weight of the unit is before you buy your next ultra-lite trailer.

Aerodynamic Ultra-Lite Design for Better Fuel Economy!

CHASSIS

Cub Expandable travel trailers feature a lightweight I-beam chassis.

- 1 Folding entry step
- 2 All tanks mounted in frame. Lowers the center of gravity, and saves valuable interior storage space
- 3 Large fresh water tank with quick drain feature. Tank design prevents water from standing in tanks during storage.
- 4 Lightweight I-beam chassis with E-coat paint finish
- 5 Dual battery rack and (2) 20 lb. LP tanks with ABS cover
- 6 Integrated heavy-duty safety chains



Cub Expandables feature aluminum-framed dinette, bed, bunks and pass-through storage frames. Aluminum frames are more durable than wood-framed structures and save weight.

LAMINATED WALLS

5-ply aluminum framed laminated construction.

- 7 Tubular aluminum welded frame reinforced around door
- 8 Radius corner, safety glass windows
- 9 ABS fender skirts
- 10 Decorative wall finish
- 11 Luan wood backer
- 12 High density structural foam insulation
- 13 Luan plywood backer
- 14 Smooth fiberglass and premium graphics package
- 15 Insulated baggage doors with key locks and finger locks
- 16 Aerodynamic front profile
- 17 Flush mount, self-supporting bunk end door with easy latch locks
- 18 Diamond plate rock guard

LAMINATED ROOF

5-ply aluminum framed laminated construction.

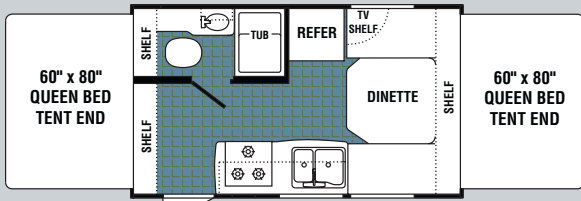
- 19 Tubular aluminum welded framed roof, reinforced at A/C
- 20 Decorative ceiling finish
- 21 Luan wood backer
- 22 High density structural foam insulation
- 23 Luan wood backer
- 24 One-piece EPDM rubber roof with 12 year manufacturer's material warranty

LAMINATED FLOOR

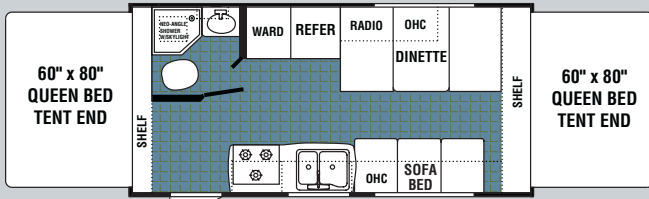
5-ply aluminum framed laminated floor structure.

- 25 One-piece composite wheel wells
- 26 Residential vinyl flooring – full length of coach
- 27 Two layers of floor decking over foam
- 28 High density structural foam
- 29 Plywood base with polypropylene waterproof vapor barrier
- 30 Tubular welded aluminum framed floor

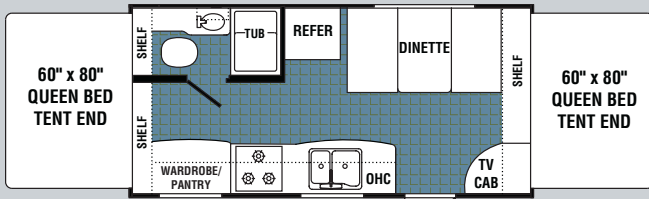
ULTRA-LITE EXPANDABLE FLOORPLANS



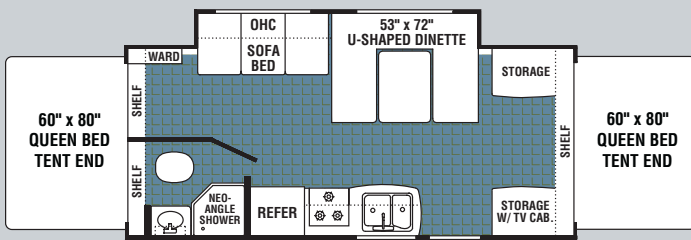
160



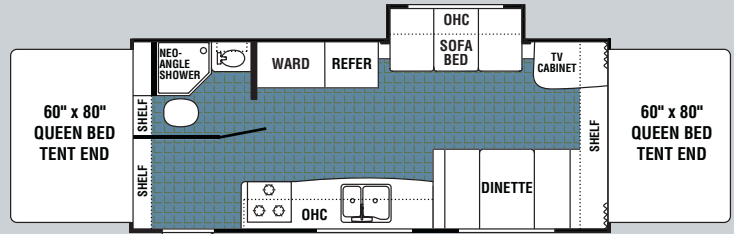
185



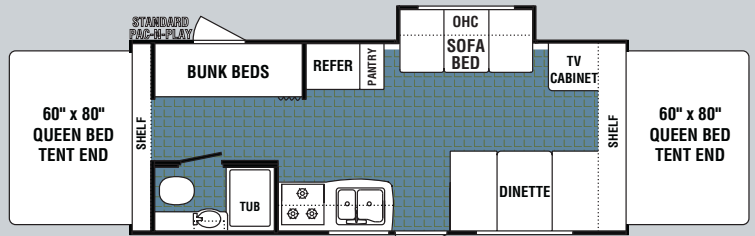
195



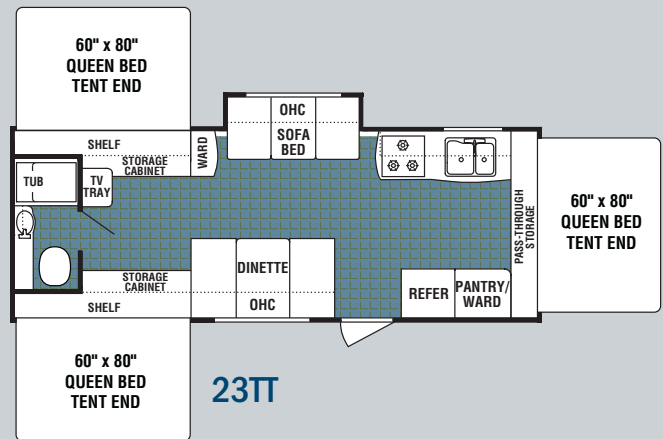
214



235



23BH



23TT

1/2 TON SERIES

WEIGHTS & SPECIFICATIONS

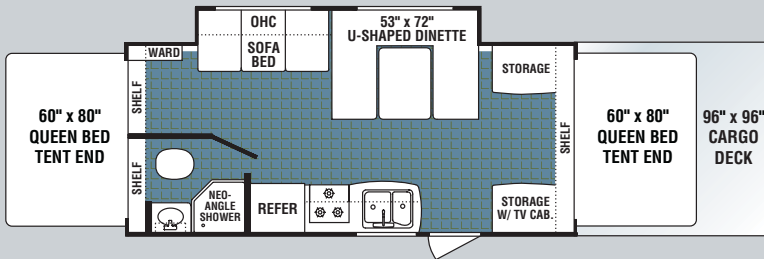
	160	185	195	214	235	23BH	23TT	314THV
*Axle Weight	2528	NA	3212	3696	3524	3658	3857	4690
*Dry Hitch Weight	334	NA	218	373	362	446	517	419
*Unloaded Vehicle Weight	2862	NA	3430	4069	3886	4104	4374	5109
GVWR	3750	NA	5000	5300	5300	5300	6000	7500
Net Cargo Capacity	888	NA	1570	1231	1414	1196	1626	2391
Exterior Length (closed)	17'6"	NA	20'4"	24'1"	24'4"	26'4"	26'4"	32'10"
Exterior Height with A/C	9'8"	9'8"	9'8"	9'8"	9'8"	9'8"	9'8"	10'8"
Exterior Width	8'	8'	8'	8'	8'	8'	8'	8'
Fresh Water Tank	38	38	38	38	38	38	38	38
Gray Water Tank	39	39	39	39	39	39	39	39
Black Water Tank	22	NA	22	28	22	28	28	28
Furnace Size (BTUs)	18,000	NA	18,000	19,000	19,000	19,000	19,000	19,000

Tire Size (all models, NA 314THV): ST205/75D14(C) Tire Size 314THV: LT235/75R15(C) Interior Height (all Cub models): 6'4"

*Axle weight, dry hitch weight and unloaded vehicle weight (UJV) are base weights of units without options. Each unit includes a weight label which lists specific weight information for that unit. Vehicle Loading - Every effort has been made to provide the greatest number of options for the recreation vehicle owner. Along with these choices comes the responsibility to manage the loads that are imposed by the choices so that they remain within the manufacturer's specified chassis weight limits. Do not overload the recreation vehicle. Net carrying capacity (NCC) determined by subtracting unloaded vehicle weight (UJV) from gross vehicle weight (GVWR) and includes fluids, options and cargo. Liquid capacities and weights are approximations only. Warning: This information is intended as a guide only. Weights of individual vehicles may vary. Consult your owner's manual for complete loading, weighing and towing instructions.

INTRODUCING THE 314THV EXPANDABLE TOY HAULER

96" X 96" CARGO DECK WITH 1600 LB. LOAD CAPACITY!



314THV



D-ring tie-down rings

A Best-Selling Cub Floorplan is Now a Toy Hauler!

The new 314THV features a 96" x 96" cargo platform with expanded metal deck and a 1600 lb. capacity. Securely take along your toys with eight conveniently placed D-ring tie-downs!



From the Leader in Ultra-Lite Technology

314THV Standard Features

- 1600 lb. Cargo deck capacity
- D-ring tie-down rings
- *Fulton* aluminum deck rails double as cargo ramps
- Anti-slip deck finish
- Heavy-duty 2000 lb. hitch jack
- Four corner stabilizer jacks
- Standard Lift Kit Package with off-road tires
- Triple entry step
- Queen 60" x 80" bunk ends with Auto-pop tent
- Large U-shaped dinette
- Sleeps 7!

MORE STANDARD FEATURES

FROM THE INDUSTRY LEADER IN ULTRA-LITE TECHNOLOGY



Exterior Features

- 8' Wide floorplans
- Auto-pop half dome, self-supporting bunk end with futon mattress
- Key-locking "Easy Latch" tent doors
- 60" x 80" queen beds in tents
- Pac-N-Play exterior storage in bunkhouse (23BH only)
- A & E 8300 awning
- Four corner stabilizer jacks with sand pads
- Diamond plate rock guard
- Hot/cold exterior shower
- Two 20 lb LP bottles with ABS cover
- 26" radius corner entry door
- Flush combo entry latch/deadbolt lock
- ABS wheel wells and fender skirts
- Tandem axles with 4-wheel electric brakes
- Spare tire with cover
- 6-Way welded aluminum laminated superstructure (roof, floor and walls)
- Lightweight I-beam frame with E-coat finish
- EPDM one-piece seamless rubber roof
- Corrosion-free laminated underbelly
- High-end designer graphics
- Rain gutter with corner downspouts
- Rear bumper and corner guards
- Single entry step (Triple on 314THV)
- Tinted, radius corner, clamp ring safety glass windows
- Entry-assist handle at door
- Break-away trailer switch
- 120V Exterior outlet

Interior Features

- Bunk end lights with fan
- Bathroom medicine cabinet
- Designer window treatments
- Fiberlink bathtub
- Shower curtain
- Residential tile-like linoleum
- Mini blinds throughout
- Power roof vent in bathroom
- Skylight in bath
- Tub surround

Appliances & Electrical

- Norcold double door gas/electric refrigerator
- 13.5 BTU air conditioning
- AM/FM/CD stereo with MP3 port* and 2 speakers
- Microwave
- Range with oven and stove cover
- 12V Electric slide-out motor
- 30 Amp power cord with storage compartment
- 6 Gallon gas/electric water heater with DSI
- 12V Interior lights with wall switch
- Fire extinguisher
- LP/Carbon monoxide/Smoke detectors
- TV antenna
- Range hood with 12V light and exhaust fan
- Solid state converter with built-in battery charger
- Systems monitor panel
- 12V Demand water pump

*See dealer for MP3 port availability in standard stereo

THE BEST OPTIONAL FEATURES THAT YOU WANT

- THULE SmartRV Package 1: table, 2 chairs, countertop, 2 hooks, trash bin, table caddy
- THULE SmartRV Package 2: table, 2 chairs, trash bin, table caddy
- Exterior sound system
- Heated holding tanks (NA CSA)
- Water filter system with spout
- Exterior barbeque grill
- Aluminum rims
- Fantastic vent (NA 160 & 23BH)
- Lift Kit Package (see page 3 for details)
- Spare Dunlop Rover tire
- Harmony white wood package with cherry plank linoleum
- Indoor/outdoor satellite/cable connection

EXPLORE YOUR HORIZONS

2164 Caragana Court ■ Goshen, IN 46526
Sales: 574.534.1224 ■ Fax: 574.975.0556
Parts & Service: 574.537.0700

www.aero-rv.com

Your Local Dealer

DECOR OPTIONS



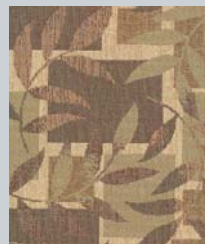
Desert



Plum Leaf



Glacier Blue



Fall Sunset



1 YEAR BUMPER TO HITCH LIMITED WARRANTY
2 YEAR STRUCTURAL & APPLIANCE LIMITED WARRANTY

*See owner's manual for complete warranty details.



Product information, specifications, and photography in this brochure were as accurate as possible at time of printing. Photographs may contain some features that are optional on your vehicle. Since we continually strive to improve our products, actual products may differ. Prices and specifications are subject to change without notice. All capacities are approximate and dimensions are nominal. Some features shown are optional and may be different or unavailable in Canada. Vehicles are designed for recreational use only and not intended for use as a primary residence. All product brand names used in this brochure are registered trademarks of Thor Industries, Inc. Unauthorized use of trademarks is prohibited by law.