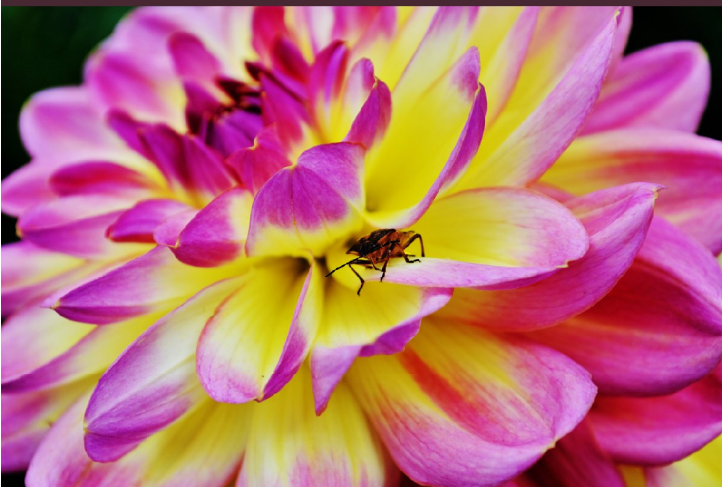




INDEX SEMINUM 2015 No 15





**BOTANIC GARDEN OF
ŠIAULIAI UNIVERSITY**

INDEX SEMINUM 2015
No 15

**BOTANIC GARDEN OF ŠIAULIAI UNIVERSITY
ASSOCIATION OF BOTANIC GARDENS OF LITHUANIAN UNIVERSITIES
(LUBSA)**

Vilniaus str. 88
Šiauliai, LT – 76285
Lithuania

phone: +370-41-553934
faxphone: +370-41-557039
e-mail: dir@bs.su.lt

Authors: Asta Klimienė, Rimanta Vainorienė, Roberta Dubosaitė–Lepeškevičė, Vaidas Juknevičius, Indrė Šklenikienė.

Cover image:

Anemone hepatica Lemoine; *Dahlia* 'Night Butterfly'; *Dahlia* 'Rundale'; *Campanula persicifolia* L.
Photos from the Botanical Garden archives and photographer **R. Struoga**

BOTANIC GARDEN OF ŠIAULIAI UNIVERSITY

HISTORY. Botanic garden of Šiauliai University was founded in 1997, instead of Agrobiological Station. It is a member of Botanic Gardens Conservation International (BGCI) and Planta Europa Network for European plant conservation since 2003. Currently the Botanic garden is in city territory and occupied 6.54 ha. Director – prof. dr. **Asta Klimienė**.

ŠIAULIAI AREA. Šiauliai is located in Northern part of Lithuania. It is the fourth largest city in Lithuania. The population is about 105653 people.

APPROACHES OF SCIENTIFIC RESEARCH:

- Research of biodiversity regularities *in situ* and *ex situ*.
- Introduction and acclimatization of ornamental plants.
- Education activities in Botanic garden.

SECTIONS OF BOTANIC GARDEN. In 2015 quantity of taxa of plants was over 4000. These plants are stored in 7 sections:

- **Section of Plant Systematics and Geography.** Species of plants are treated by A. L. Tachtadjan system. The section establishment began in 2000 and now section contains about 900 species of 92 families. Research worker **Roberta Dubosaitė–Lepškevičė** is curator for the section.
- **Section of Lithuanian flora.** Section was started to establish in 2011. Priorities: species from local north Lithuania flora, rare Lithuanian Red books and protected species, medical and ethnobotany plants resources, in small area exhibited weed. Section contain totaly about 180 taxa of 58 families plants. Seeds of monocotyledons got from Lithuanian Research Centre for Agriculture and Forestry. Worker **Virginija Aleknienė** is curator for the section.
- **Section of Floriculture.** Much attention is paid concentrated to species and breeds of decorative perennial herbs, also plants of the genus orris, day lily and lily. Number of taxa in section – 1200. Specialist **Indrė Šklenikienė** is curator for the section.
- **Section of Mountain Plants.** This section contains mountains plants from all over the world (Alps, Pyrenees, Caucasus, Altai, Hymalaya, Rocky Mountains, and New Zealand) and arctic zones. Today section contains plants of over 1000 species and cultivars of 70 families. In this section plants are selected by considering such criteria as decorativeness of plants, geographical plurality and distribution. Research worker **Rimanta Vainorienė** is curator for the section.
- **Section of Dendrology.** Colection of dendrology contain more then 900 taxa woody plants of which 600 are species and cultivars of dwarf coniferous and leafy trees. The most numerous in the section is *Ericaceae* family, wich has over than 300 taxa and cultivars, such as *Rhododendron*, *Calluna*, *Kalmia*, *Gaultheria*, *Erica*, *Vaccinium*. Specialist **Vaidas Juknevičius** is curator for the section.
- **Phenological Garden.** The International Phenological Garden – unique network in Europe for the observation of plants. In all gardens generally identical trees and shrubs are planted in order to make large-scale comparisons among the timing of different development stages of plants. Mainly, the rise in air temperature in the previous decades and the clear phenological response by plants led to this increased interest in phenological data. Research worker **Rimanta Vainorienė** is curator for the section.

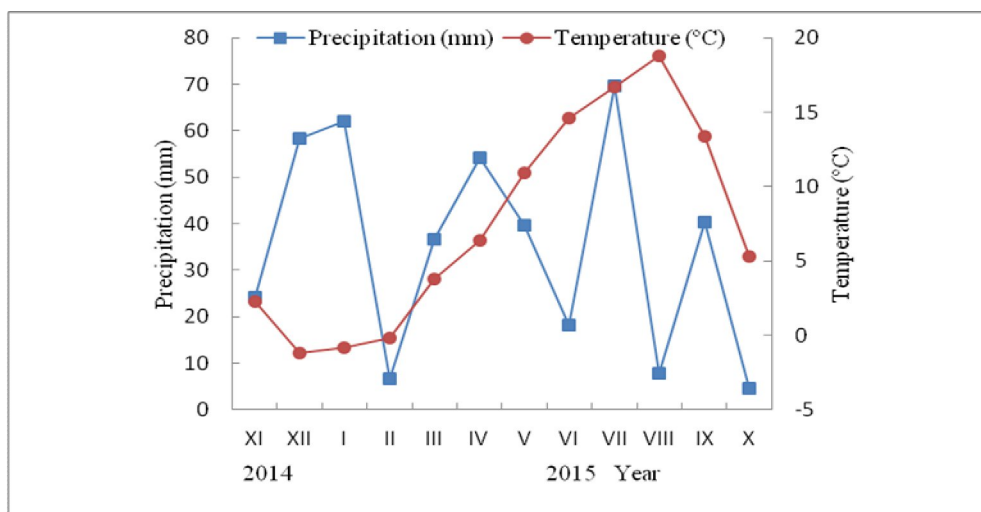
GEOGRAPHICAL SITUATION:

Latitude N 55° 55' 57.7"

Longitude E 23° 16' 57.0"

Zone 5

CLIMATIC CONDITIONS:



Distribution of mean month temperatures (in °C) and precipitation (in mm) in 2014 (November–December) - 2015 (January – October)

Collectors: V. Aleknieņē, D. Ūsienē, R. Vainorienē, R. Dubosaitē–Lepeskevičē, I. Šklenikienē.

* - Seeds collected in 2014

SEEDS FROM FOREIGN PLANTS CULTIVATED IN THE GARDEN

MAGNOLIOPHYTA Cronquist, Takht. et W. Zimm. ex Reveal.

MAGNOLIOPSIDA Brongn.

ACANTHACEAE Juss.

1. *Acanthus dioscoridis* L. var. *perringii* (Siehe) E. Hoss. [Institute of Ecology and Botany Hungarian Academy of Sciences Botanical Garden, Vacratot, HU, 2003].
2. *Acanthus hungaricus* (Borbás) Baenitz (Cullen J. et al., 2000) [(*Acanthus balcanicus* Heywood et I. Richardson), Botanical Garden of the University of Tartu, EE, 2003].

AMARANTHACEAE Juss.

3. *Celosia argentea* L. [Botanical Garden of the University of Tartu, EE, 2015].
4. *Celosia argentea* L. var. *cristata* [National Botanic Garden of Belgium, Meise, BE, 2015].
5. *Amaranthus retroflexus* L.* [Botanic Garden of University of Konstanz, DE, 2014].

ARACEAE Juss.

6. *Arisaema flava* (Forsk.) Schott* [Traupio Botanical Garden, LT, 2002].

APIACEAE Lindl.

7. *Angelica amurensis* Shischk [Botanic Garden and Arboretum Mendel University of Agriculture And Forestry Brno, Cz, 2004].
8. *Angelica atropurpurea* L. [The Botanical Garden of the University of Tübingen, DE, 2012].
9. *Angelica gigas* Nakai* [The Botanical Garden of the University of Tübingen, DE, 2012].
10. *Astrantia carniolica* Wulfen 'Rubra' [Botanical Garden of Lodz, PL, 2003].
11. *Astrantia maxima* Pall. [Botanical Garden of Lodz, PL, 2003].
12. *Astrantia trifida* Hoffm. [The Botanical Garden of Lyon, FR, 2004].

13. *Athamanta turbith* (L.) Brot. ssp. *haynaldii* (Borbás et Uechtr.) Tutin [Botanical Garden Rennsteiggarten Oberhof, DE, 2010].
14. *Bupleurum griffithii* 'Décor' [Ural State University Botanical Garden, Ekaterinburg, RU, 2004].
15. *Carum carvi* L. [Alexandru Borza Cluj-Napoca University Botanic Garden, RO, 2008].
16. *Carum rigidulum* Koch. [The Botanic Garden of the University of Padua, IT, 2004].
17. *Chaerophyllum aromaticum* L. [Botanic Garden of the University of Stuttgart-Hohenheim, Stuttgart, DE, 2008].
18. *Chaerophyllum aureum* L. [Botanical Garden University of Hamburg, DE, 2004].
19. *Chaerophyllum hirsutum* L. [The Botanical Garden of the University of Tübingen, DE, 2002].
20. *Chaerophyllum hirsutum* L. ssp. *villarsii* [The Botanical Garden of the University of Tübingen, DE, 2012].
21. *Conium maculatum* L. [Cheboksary Botanical Garden, RU, 2011].
22. *Cryptotaenia canadensis* (L.) DC. [Botanic Garden of the University of Stuttgart-Hohenheim, Stuttgart, DE, 2004].
23. *Cuminum cyminum* L. [The Botanical Garden of Besançon, FR, 2011].
24. *Endressia pyrenaica* (Gay ex DC.) Gay [The Alpine Botanical Garden "Rezia", Bormio, IT, 2008].
25. *Eryngium bourgatii* Gouan. [University of Oxford Botanic Garden and Harcourt Arboretum, UK, 2004].
26. *Eryngium caucasicum* Trautv.* [The Botanic Garden of the University of Padua, IT, 2006].
27. *Eryngium spinalba* Vill.* [Botanic Garden and Arboretum Mendel University of Agriculture And Forestry Brno, Cz, 2008].
28. *Eryngium wrightii* A. Gray. [University of Alberta Devonian Botanic Garden, CA, 2004].
29. *Ferula assa-foetida* L.* [Botanical Garden of the Carinthian Botanic Center, Klagenfurt, AT, 2012].
30. *Ferula gummosa* Boiss.* [Botanic Garden of the University of Stuttgart-Hohenheim, Stuttgart, DE, 2004].
31. *Ferula tingitana* L. [Botanical Garden of the Carinthian Botanic Center, Klagenfurt, AT, 2012].
32. *Laser trilobum* (L.) Borkh. [Botanic Garden of the Philipp University of Marburg, DE, (Deu Hessen 5517 Anhohe Oberkleen), 2002].
33. *Ligusticum lucidum* Ait f.* [Royal Botanic Garden, Juan Carlos I, Madrid, ES, 2004].
34. *Meum athamanticum* Jacq. [Botanic Garden of the Philipp University of Marburg, DE, 2002].
35. *Mutellina purpurea* (Poir.) Thell. [Botanical Garden of Maria Curie-Skłodowska University, Lublin, PL, 2003].
36. *Peucedanum austriacum* W. D. J. Koch. [Nancy Botanical Garden, FR, 2002].
37. *Peucedanum ostruthium* (L.) W. D. J. Koch. [National Botanic Garden of Belgium, Meise, BE, 2003].
38. *Sanicula marilandica* L. [The Botanical Garden of Bonn University, DE, 2003].
39. *Scandix pecten-veneris* L. [Botanical Garden of the University of Zurich, CH, 2014].

ARISTOCLOCHIACEAE Juss.

40. *Aristolochia clematitis* L.* [Botanical Garden of Klaipėda University, LT, 2003].

ASCLEPIADACEAE R. Br.

41. *Vincetoxicum rossicum* (Kleop.) Barbar. (Czerepanov, 1995) [(*Vincetoxicum roseum*), Kaunas Botanic Garden of Vytautas Magnus University, LT, 2000].

ASTERACEAE Dumort.

42. *Achillea grandifolia* Friv. [The Botanical Garden of the University of Ulm, DE, 2004].
43. *Alfredia cernua* (L.) Cass. [Central Botanical Garden of National Academia Science of Belarus, Minsk, BY, 2003].
44. *Anthemis marschalliana* Willd.* [G. Pociūlienė. Private collection, Pakalniškiai, Radviliškis district, LT, 2012].
45. *Arnica alpina* (L.) Olin [The Botanical Garden of the University of Regensburg, DE, 2002].
46. *Arnica chamissonis* Less.* [Botanical Garden of the Christian Albrechts University of Kiel, DE, 2003].
47. *Aster alpinus* L. [Botanical Garden Teplice, CZ, 2012].
48. *Aster alpinus* L. 'Albus'* [Botanical Garden of Maria Curie-Skłodowska University, Lublin, PL, 2005].
49. *Aster alpinus* L. var. *dolomiticus* Beck.* [The Alpine Botanical Garden "Paradisias", IT, 2009].
50. *Aster alpinus* L.* [Institute of Ecology and Botany Hungarian Academy of Sciences Botanic Garden, Vacratot, HU, 2002].
51. *Aster caucasicus* Willd.* [University of Alberta Devonian Botanic Garden, CA, 2004].
52. *Aster diplostephioides* (DC.) C. B. Clarke* [Botanical Garden of the University of Tartu, EE, 2004].
53. *Aster flaccidus* Bunge [Botanical Garden "La Thomasia", Lausanne, CH, 2010].
54. *Aster himalaicus* C. B. Clarke* [The Alpine Botanical Garden "Saussurea", Courmayeur, IT, 2010].
55. *Brachyglottis bellidioides* (Hook.f.) B. Nord.* [St Andrews Botanic Garden, the Canongate, UK, 2013].
56. *Centaurea aptolepa* Moretti ssp. *carueliana* (Micheletti) Dostál [The Botanical Garden of Bonn University, DE, 2012].
57. *Centaurea nemoralis* Jord. [National Botanic Garden of Belgium, Meise, BE, 2002].
58. *Centaurea pulchra* DC. [The Alpine Botanical Garden "Viotte", Trento, IT, 2011].

59. *Centaurea ruthenica* Lam. [Botanical Garden of the Ukrainian Academy of Science, Kiev, UA, 2004].
60. *Chondrilla juncea* L. [The Botanical Garden of Bonn University, DE, 2003].
61. *Cirsium acaule* (L.) Scop. ssp. *acaule* [Bagatelle Park. The Botanical Garden of Paris, FR, 2011].
62. *Cirsium purpuratum* (Maxim.) Matsum.* [The Kyoto Botanical Garden, JP, 2012].
63. *Cosmos bipinnatus* Cav. 'Unschuld'* [The Ecological-Botanical Gardens of the University of Bayreuth, DE, 2013].
64. *Cynara scolymus* L. [Botanical Garden of the Medical University of Gdansk, PL, 2009].
65. *Echinacea pallida* Nutt* [Botanical Garden of the Technical University Braunschweig, DE, 2007].
66. *Erigeron atticus* Vill. [The Botanical Garden of the University of Regensburg, DE, 2012].
67. *Erigeron compositus* Pursh [G. Pociūlienė. Private collection, Pakalniškiai, Radviliškis district, LT, 2010].
68. *Erigeron epiroticus* (Vierh.) Halácsy* [The Munich Botanical Garden, Nymphenburg, DE, (Bosnia and Herzegovina, 1850 m), 2010].
69. *Erigeron flettii* G. N. Jones* [Botanical Garden of the University of Tartu, EE, 2008].
70. *Erigeron speciosus* (Lindl.) DC. [National Botanic Garden of Belgium, Meise, BE, 2002].
71. *Eriophyllum lanatum* (Pursh) J. Forbes [Botanical Garden of the Christian Albrechts University of Kiel, DE, 2002].
72. *Eupatorium cannabinum* L. ["Anastasiu Fătu" Botanic Garden, "Alexandru Ioan Cuza" University of Iasi, RO, 2009].
73. *Gazania krebsiana* Less. ssp. *krebsiana* Ernte* [Botanical Garden of the Technical University Braunschweig, DE, 2009].
74. *Gerbera kunzeana* A. Br. et Aschers [Kaunas Botanic Garden of Vytautas Magnus University, LT, 2000].
75. *Haplopappus croceus* A. Gray [The Botanical Garden of Bonn University, DE, 2005].
76. *Helichrysum compactum* Boiss.* [Botanical Garden University Innsbruck, AT, 2004].
77. *Helichrysum montanum* DC. [Botanic Garden and Arboretum Mendel University of Agriculture and Forestry Brno, CZ, 2010].
78. *Heterotheca pumila* (Greene) Semple [Prague Botanical Garden Czech Republic, CZ, 2009].
79. *Hieracium aurantiacum* L.* [The Polar Alpine Botanical Garden, Kirovsk, RU, 2004].
80. *Hieracium pilosella* L. [The Botanical Garden of the University of Latvia, Riga, LV, 2008].
81. *Hieracium tomentosum* L.* [The Botanical Garden of Graz, Institute for Plant science, Karl-Franzens-University Graz, AT, (1996: Italien; Aosta, Cogne, Val Grauson, 2300 m), 2010].
82. *Hieracium villosum* Jacq. [Botanic Garden of Nantes, FR, 2005].
83. *Hymenoxys hoopessii* (A. Gray) Bierner [Botanical Garden of the University of Tartu, EE, 2011].
84. *Inula acaulis* var. *caulescens* Nab. [Gothenburg Botanical Garden, SE, 2011].
85. *Inula helenium* L. [Botanic Garden of Šiauliai University, LT. No data available of their origin].
86. *Inula magnifica* Lipsky [Botanic Garden of Petrozavodsk State University, RU, 2004].
87. *Inula royleana* DC. [Kaunas Botanic Garden of Vytautas Magnus University, LT, 2000].
88. *Jurinea mollis* Rchb. [The Munich Botanical Garden, Nymphenburg, DE, 2013].
89. *Leibnitzia anandria* (L.) Nakai [Nancy Botanical Garden, FR, 2002].
90. *Leontopodium alpinum* Colm. ex Cass. [Kaunas Botanic Garden of Vytautas Magnus University, LT, 2000].
91. *Leontopodium kurlense* Takeda* [Botanical Garden "La Thomasia", Lausanne, CH, 2010].
92. *Leontopodium ochroleucum* Beauverd* [Reykjavik Botanical Garden, IS, (Tajikistan: Pamir Mts., Murgab, 3400 m), 2011].
93. *Leontopodium palibinianum* Beauverd* [Institute of Ecology and Botany Hungarian Academy of Sciences Botanical Garden, Vacratot, HU, 2004].
94. *Leontopodium wilsonii* Beauverd [The Botanical Garden of the University of Regensburg, DE, 2004].
95. *Leuzea rhapontica* (L.) J. Holub [The Alpine Botanical Garden "Rezia", Bormio, IT, 2010].
96. *Ligularia alatipes* Hand.-Mazz. [Reykjavik Botanical Garden, IS, (China: Yunnan, Lijiang, Yulon Shan, Xie Ren Ji valley, above Mu Zhou Go (CLD 1189), 3300 m), 2011].
97. *Ligularia fischeri* (Ledeb.) Turcz.* [The Botanical Garden of the University of Regensburg, DE, 2002].
98. *Ligularia wilsoniana* (Hemsl.) Greenm. [The Botanical Garden of the University of Regensburg, DE, 2011].
99. *Madia elegans* D. Don ex Lindl. [Botanic Garden of Rennes, FR, 2014].
100. *Matricaria tempiskyana* (Freyn et Sint.) Rauschert* [Gothenburg Botanical Garden, SE, (Greece, Ioanninon, above Metsovo, road to the Katara pass, 1400 m), 2010].
101. *Ptilostemon hispanicus* (Lam.) Greuter [Alpine Botanical Garden of Lautaret, FR, (Sierra Nevada (Espagne), 1900 m), 2011].
102. *Pulicaria dysenterica* (L.) Bernh. [Institute of Ecology and Botany Hungarian Academy of Sciences Botanical Garden, Vacratot, HU, 2002].
103. *Rhaponticum carthamoides* (Willd.) Iljin. [Botanical Garden of Klaipėda University, LT, 2003].
104. *Rhaponticum scariosum* Lam. ssp. *bickelli* (Gugler) Pign. [The Alpine Botanical Garden "Viotte", Trento, IT, 2011].
105. *Rudbeckia flava* Greene* [Kaunas Botanic Garden of Vytautas Magnus University, LT, 2000].
106. *Rudbeckia laciniata* L.* [The Botanical Garden of the University of Latvia, Riga, LV, 2008].

107. *Scorzonera hispanica* L. [Botanic Garden and Arboretum Mendel University of Agriculture and Forestry Brno, CZ, 2011].
108. *Senecio adonidifolius* Loisel.* [The Alpine Botanical Garden “Viotte”, Trento, IT, 2011].
109. *Senecio herreianus* Dinter [Royal Rotterdam Zoological and Botanical Garden, NL, 2004].
110. *Serratula coronata* L.* [Institute of Ecology and Botany Hungarian Academy of Sciences Botanical Garden, Vacratot, HU, 2002].
111. *Serratula manshurica* Kitag.* [Botanical Garden Institute Vladivostok, RU, 2004].
112. *Solidago uliginosa* Nutt.* [Salaspils National Botanical Garden, LV, 2004].
113. *Solidago virgaurea* L. [The Botanic Garden of the University of Oulu, FI, (Norway, Trs, Storfjord, Moalkejavi (69° 05'N, 20°42'E, 550 m), 10.9.03BG), 2004].
114. *Tanacetum vulgare* L.* [Botanic Garden of Šiauliai University, LT, 2000].
115. *Telekia speciosa* (Schreb.) Baumg. [National Botanic Garden of Belgium, Meise, BE, 2008].
116. *Thelesperma burridgeanum* S. F. Blake* [Kovacs Pal Rock Garden, Dorog, HU, 2014].
117. *Townsendia parryi* D. C. Eaton [Kovacs Pal Rock Garden, Dorog, HU, 2010].
118. *Turczaninowia fastigiata* (Fisch.) DC. [Botanical Garden Institute Vladivostok, RU, 2005].

BERBERIDACEAE Juss.

119. *Podophyllum hexandrum* Royle [The Alpine Botanical Garden “Viotte”, Trento, IT, 2008].
120. *Podophyllum himalaicum* [Botanic Garden of Šiauliai University, LT, 1997].
121. *Podophyllum peltatum* L.* [The Botanical Garden of Graz, Institute for Plant science, Karl-Franzens-University Graz, AT, 2005].

BIGNONIACEAE Juss.

122. *Incarvillea compacta* Maxim. [The Botanical Garden Aarhus, DK, 2006].
123. *Incarvillea mairei* (Leveille) Grierson* [Botanical Garden University of Oslo, NO, 2003].
124. *Incarvillea mairei* var. *grandiflora** (Wehrhahn) Grierson (Cullen et al., 2000) [(*Incarvillea grandiflora* Bureau et Franch.), Institute of Botany Academy of Sciences of the Czech Republic Pruhonice, CZ, 2006].
125. *Incarvillea olgae* Regel [Kaunas Botanic Garden of Vytautas Magnus University, LT, 2000].

BORAGINACEAE Juss.

126. *Alkanna tinctoria* (L.) Tausch [The Botanical Garden of Graz, Institute for Plant science, Karl-Franzens-University Graz, AT, 2012].
127. *Anchusa italica* Retz.* [The Botanical Garden of Besancon, FR, 2011].
128. *Arnebia pulchra* (Willd. ex Roem. et Schult.) Edm. [Reykjavik Botanical Garden, IS, 2006].
129. *Cynoglossum germanicum* Jcq. [Botanic Garden of University of Konstanz, DE, 2015].
130. *Echium russicum* Gmelin* [Botanical Garden of the V. L. Komarov Botanical Institute, St. Petersburg, RU, 2004].
131. *Echium vulgare* L.* [Botanical Garden of the Technical University Braunschweig, DE, 2012].
132. *Eritrichium canum* (Bentham) Kitam.* [The Munich Botanical Garden, Nymphenburg, DE, 2005].
133. *Lindelofia anchusoides* (Lindl.) Lehm. [National Botanic Garden of Belgium, Meise, BE, 2002].
134. *Lindelofia macrostyla* (Bunge) Popov. [The Botanical Garden of Lyon, FR, 2002].
135. *Mertensia echioides* Benth. ex C. B. Clarke* [Institute of Ecology and Botany Hungarian Academy of Sciences Botanical Garden, Vacratot, HU, 2012].
136. *Moltkia suffruticosa* (L.) Brand* [The Botanical Garden of Bonn University, DE, 2005].
137. *Onosma taurica* Wild. [Botanic Garden of the Philipp University of Marburg, DE, 2011].
138. *Solenanthus apenninus* (L.) Fischer et Meyer [The Munich Botanical Garden, Nymphenburg, DE, 2005].

BRASSICACEAE Burnett.

139. *Alyssoides utriculata* (L.) Medik. [The Botanical Garden of Bonn University, DE, 2003].
140. *Alyssum altaicum* C. A. Mey. [Botanical Garden of Maria Curie-Skłodowska University, Lublin, PL, 2004].
141. *Alyssum ovirense* Kerner. [The Alpine Botanical Garden “Rezia”, Bormio, IT, 2004].
142. *Alyssum propinquum* Baumg. [Botanic Garden and Arboretum Mendel University of Agriculture and Forestry Brno, CZ, 2009].
143. *Alyssum wulfenianum* Bernh. [Botanical Garden of Maria Curie-Skłodowska University, Lublin, PL, 2003].
144. *Arabidopsis suecica* (Fr.) Norrl. [Helsinki University Botanic Garden, FI, 2013].
145. *Arabis bryoides* Boiss. [Botanic Garden and Arboretum Mendel University of Agriculture and Forestry Brno, CZ, 2011].
146. *Arabis turrata* L. [Botanical garden of the university Vienna, AT, 2013].
147. *Aubrieta parviflora* Boiss. [Kovacs Pal Rock Garden, Dorog, HU, 2013].
148. *Bunias orientalis* L. [The Botanical Garden of the University of Latvia, Riga, LV, 2006].
149. *Cochlearia officinalis* L. [The Botanical Garden of Besancon, FR, 2013].
150. *Conringia orientalis* (L.) Dumort. [The Botanic Garden of the Georg-August-University, Goettingen, DE, 2015].

151. *Crambe abyssinica* Hochst. ex R. E. Fr. [Botanical Garden Fakulty of Science Palacky University Olomouc, CZ, 2005].
152. *Crambe hispanica* ssp. *abyssinica* (Hochst. ex R. E. Fr.) Prina* [The Ecological-Botanical Garden of the University of Bayreuth, DE, 2014].
153. *Crambe maritima* L.* [Kaunas Botanic Garden of Vytautas Magnus University, LT, 2000].
154. *Draba aspera* Bertoloni [Botanical Garden of the University of Tartu, EE, 2004].
155. *Draba oligosperma* Hook. [The Munich Botanical Garden, Nymphenburg, DE, 2010].
156. *Draba sachalinensis* Trautv. [Botanical Garden of the Ruhr University Bochum, DE, 2005].
157. *Draba sakuraii* Makino [Botanical Garden University of Oslo, NO, 2005].
158. *Draba sauteri* Hoop.* [Kovacs Pal Rock Garden, Dorog, HU, 2008].
159. *Iberis amara* L. [Botanical Garden of the University of Zurich, CH, 2015].
160. *Iberis sempervirens* L. [The Botanical Garden of the University of Latvia, Riga, LV, 2000].
161. *Isatis tinctoria* L. [National Botanic Garden of Belgium, Meise, BE, 2003].
162. *Lesquerella alpina* (Nutt.) S. Watson* [The Botanical Garden of the University of Regensburg, DE, 2010].
163. *Lesquerella arctica* (Wormsk. ex Hornem.) S. Watson* [Kovacs Pal Rock Garden, Dorog, HU, 2011].
164. *Neslia paniculata* (L.) Desv. [The Botanical Garden of the University of Ulm, DE, 2015].
165. *Phoenicaulis cheiranthoides* Nutt. [The Munich Botanical Garden, Nymphenburg, DE, 2010].
166. *Ptilotrichum spinosum* (L.) Boiss. [The Alpine Botanical Garden "Paradisica", IT, 2005].
167. *Rorippa palustris* (L.) Besse [Botanical Garden of University of Oldenburg, DE, 2015].

CAMPANULACEAE Juss.

168. *Adenophora pereskiiifolia* (Roemer et Schultz) G. Don* [The Greifswald Botanic Garden and Arboretum, DE, 2009].
169. *Asyneuma canescens* (Waldst. ex Kit.) Griseb. ex Schenk* [Botanic Garden of Rennes, FR, 2011].
170. *Campanula alliariifolia* Willd. [Prague Botanical Garden, CZ, 2012].
171. *Campanula collina* Sims [Reykjavik Botanical Garden, IS, (HB Nancy FRA, 1989), 2009].
172. *Campanula dolomitica* E. A. Busch* [Botanical Garden of the University of Tartu, EE, 2010].
173. *Campanula incurva* Aucher ex A. DC.* [Utrecht University Botanic Garden, NL, (Greece, Magnisia: Tsangarada), 2009].
174. *Campanula makaschvilii* E. A. Busch* [Botanical Garden University of Pécs, HU, 2009].
175. *Campanula persicifolia* L. [Institute of Ecology and Botany Hungarian Academy of Sciences Botanical Garden, Vacratot, H, 2004].
176. *Campanula rhomboidalis* L.* [The Alpine Botanical Garden "Saussurea", Courmayeur, IT, 2005].
177. *Campanula sarmatica* Ker Gawl. [The Botanical Garden of the University of Tübingen, DE, 2003].
178. *Campanula sarmatica* ssp. *sarmatica* (Lammers, 2007) [(*Campanula siegismundii* Fed.), Botanical Garden University of Pécs, HU, 2008].
179. *Campanula sibirica* L. [Arboretum and Institute of Physiography in Bolestraszyce, PL, 2004].
180. *Campanula speciosa* Pourr.* [Botanical Garden of Justus-Liebig-University Giessen, DE, 2012].
181. *Campanula thyrsoides* L.* [The Alpine Botanical Garden "Viotte", Trento, IT, 2013].
182. *Codonopsis bhutanica* Ludlow. [The Botanical Garden of the University of Regensburg, DE, 2010].
183. *Codonopsis clematidea* C. B. Clarke [Salaspils National Botanical Garden, LV, 2001].
184. *Codonopsis ovata* Benth. [Botanical Garden of the University of Zurich, CH, 2007].
185. *Codonopsis tangshen* Oliv. [Botanical Garden of the University of Potsdam, DE, 2006].
186. *Codonopsis viridiflora* Maxim.* [RHS Garten Wisley, UK, 2008].
187. *Edraianthus dalmaticus* (A. DC.) A. DC.* [Botanical Garden of the Carinthian Botanic Center, Klagenfurt, AT, 2009].
188. *Edraianthus serbicus* Petrovič* [The Botanical Garden of Graz, Institute for Plant science, Karl-Franzens-University Graz, AT, 2005].
189. *Edraianthus tenuifolius* 'Albus' [Botanical Garden University Innsbruck, AT, 2012].
190. *Jasione heldreichii* Boiss. et Orph. [Botanic Garden of Nantes, FR, 2002].
191. *Jasione pyrenaica* Sennen* [The Botanical Garden of Graz, Institute for Plant science, Karl-Franzens-University Graz, AT, 2005].
192. *Legousia falcate* (Ten.) Fritsch. [Botanic Garden of University of Konstanz, DE, 2015].
193. *Phyteuma charmelii* Vill. [Botanical Garden of the University of Potsdam, DE, 2006].
194. *Phyteuma vagneri* A. Kerner* [Institute of Botany Academy of Sciences of the Czech Republik Pruhonice, CZ, 2004].
195. *Symphandra zangezura* Lipsky [Botanic Garden and Arboretum Mendel University of Agriculture and Forestry Brno, CZ, 2007].

CANNABACEAE Endl.

196. *Cannabis sativa* L. [Botanic Garden of Šiauliai University, LT. No data available of their origin].

CAPRIFOLIACEAE Juss.

197. *Triosteum himalayenum* Wall. [University of Salzburg Department of Organismic Biology Study Group Botanical Garden, AT, 2009].
198. *Triosteum pinnatifidum* Maxim. [University of Turku Botanic Garden, FI, 2004].

CARYOPHYLLACEAE Juss.

199. *Agrostemma githago* L. [Botanical Garden, Faculty of Science, Palacky University in Olomouc, CZ, 2006].
200. *Arenaria armeniaca* Boiss. [K. Vyšniauskas. Private collection, Raseiniai, LT, 2003].
201. *Arenaria gracilis* Waldst. et Kit.* [Botanic Garden and Arboretum Mendel University of Agriculture and Forestry Brno, CZ, (Croatia: Velebit Mts., Buljma, 1350 m), 2007].
202. *Arenaria gypsophiloides* L. var. *glabra* Fenzl [Botanic Garden of the Philipp University of Marburg, DE, 2003].
203. *Arenaria kingii* Jones [Botanical Garden University of Oslo, NO, 2004].
204. *Arenaria polaris* Schischk. [The Botanical Garden Bielefeld, DE, 2010].
205. *Arenaria procera* Spreng. ssp. *glabra* (F. N. Williams) Holub* [The Botanical Garden of the University of Latvia, Riga, LV, 2003].
206. *Arenaria tetraquetra* L. [K. Vyšniauskas. Private collection, Raseiniai, LT, 2002]. Botanical Garden, Vacratot, HU, 2004].
207. *Cerastium alpinum* var. *lanatum* (Lam.) Hegetschw. [G. Pociūlienė. Private collection, Pakalniškiai, Radviliškis district, LT, 2013].
208. *Cerastium decalvans* Schloss. et Vuk.* [The Botanical Garden of Ljubljana, SI, 2006].
209. *Cucubalus baccifer* L.* [Botanical Garden of the University of Zurich, CH, 2006].
210. *Dianthus alpinus* L. 'Weiss'* [Experimental Station of Field Floriculture, LT, 2005].
211. *Dianthus gratianopolitanus* Vill. 'Carmineus' [Botanical Garden of the University of Tartu, EE, 2007].
212. *Dianthus haematocalyx* Boiss. et Heldr. ssp. *pindicola* (Vierh.) Hayek [The Botanical Garden of the University of Tübingen, DE, 2010].
213. *Dianthus lumnitzeri* Wiesb. [Botanical Garden University Innsbruck, AT, 2014].
214. *Dianthus monspessulanus* L. [Botanical Garden Hanbury at Ventimiglia, IT, (Valle di Palombaro-Palombaro (CH), 1940 m), 2005].
215. *Dianthus nitidus* Waldst. et Kit. [Botanical Garden of Maria Curie-Skłodowska University, Lublin, PL, 2003].
216. *Dianthus oschtenicus* Galushko* [St Andrews Botanic Garden, the Canongate, UK, 2013].
217. *Dianthus petraeus* Waldst. et Kit.* [The Botanical Garden of the University of Tübingen, DE, 2003].
218. *Dianthus pindicola* Vierh. [Botanical Garden Teplice, CZ, 2013].
219. *Dianthus praecox* Willd. et Spreng.* [Botanical Garden of P. J. Šafárik University, Košice, SK, 2010].
220. *Dianthus ruprechtii* Schischk. [Botanical Garden of Pyatigorsk State Pharmaceutical Academy, RU, 2004].
221. *Dianthus sternbergii* Sieber [Austrian Horticultural Society, Graz, AT, 2004].
222. *Dianthus tianshanicus* Schischk. [Botanical Garden of the Christian Albrechts University of Kiel, DE, 2004].
223. *Dianthus turkestanicus* Preobr. [Botanical garden Grugapark Essen, DE, 2008].
224. *Dianthus tymphresteus* Heldr. et Sartori [Botanical Garden Teplice, CZ, 2012].
225. *Dianthus webbianus* Parl. ex Vis. var. *alpinus* Boiss. [Botanic Garden of the Philipp University of Marburg, DE, (TR, West-Anatolien, Kaz-Dag, Nadelwald, 1700 m), 2009].
226. *Drypis spinosa* L. [Utrecht University Botanic Garden, AN, (Slovenia, Trnovski Gozd (Ternovaner Wald), Adovscina, Aufstieg von der Zavetisce Bavcerja Zum M. Gora., 1000-1200 m), 2008].
227. *Gypsophila acutifolia* FISCH. ex Spreng. [Botanic Garden of the University of Stuttgart-Hohenheim, Stuttgart, DE, 2014].
228. *Gypsophila pacifica* Kom.* [Botanic Garden and Arboretum Mendel University of Agriculture and Forestry Brno, CZ, 2010].
229. *Gypsophila repens* L. [The Commercial Source, LT, 2004].
230. *Gypsophila scorzonifolia* Ser. [Institute of Ecology and Botany Hungarian Academy of Sciences]
231. *Gypsophila tenuifolia* M. Bieb. [Botanic Garden of the Philipp University of Marburg, DE, 2009].
232. *Holosteum umbellatum* L. [Botanical garden of the university Vienna, AT, 2013].
233. *Lychnis alpina* L. [Botanical Garden University of Oslo, NO, 2003].
234. *Lychnis flos-jovis* (L.) Desr. [Botanical Garden of the Christian Albrechts University of Kiel, DE, 2011].
235. *Lychnis flos-jovis* (L.) Desr. 'Nana'* [Botanical Garden of Maria Curie-Skłodowska University, Lublin, PL, 2003].
236. *Lychnis yunnanensis* Baker f. [Nancy Botanical Garden, FR, 2011].
237. *Minuartia doerfleri* Hayek [Botanic Garden of the University of Copenhagen, DK, (Greece: Dramas, Mt Falakro, 1800-2100 m, S54429), 2004].
238. *Minuartia gerardii* (Willd.) Hayek [The Botanical Garden of Ljubljana, SI, 2006].
239. *Minuartia juniperina* (L.) Maire et Petitm.* [The Ecological-Botanical Garden of the University of Bayreuth, DE, 2004].
240. *Minuartia krascheninnikovii* Schischk. [The Botanical Garden of Ufa Scientific Center of Russian Academy of Sciences, RU, 2004].
241. *Minuartia langii* (Reuss) Holub. [Botanical Garden of P. J. Šafárik University, Košice, 2004].

242. *Minuartia verna* (L.) Hiern [Botanical Garden of the University of Tartu, EE, 2002].
243. *Petrorhagia saxifraga* (L.) Link [National Botanic Garden of Belgium, Meise, BE, (Austria, Nieder-Österreich, between Ybbs and Persenbeug), 2001].
244. *Saponaria caespitosa* DC. [Botanical Garden of the University of Tartu, EE, 2003].
245. *Saponaria lutea* L.* [The Munich Botanical Garden, Nymphenburg, DE, (Italy, Vallone urtier, Alpe Manda, 2400 m), 2004].
246. *Saponaria officinalis* L. [“Anastasiu Fătu” Botanic Garden, “Alexandru Ioan Cuza” University of Iasi, RO, 2006].
247. *Saponaria sicula* Rafin. ssp. *intermedia* (Simmer) Chater* [The Botanical Garden of Graz, Institute for Plant science, Karl-Franzens-University Graz, AT, 2006].
248. *Silene asterias* Griseb. [Botanic Garden of the University of Stuttgart-Hohenheim, Stuttgart, DE, 2011].
249. *Silene caucasica* (Bunge) Boiss. [The Alpine Botanical Garden “Chanousia”, IT, 2004].
250. *Silene chlorantha* (Willd.) Ehrh. [Botanic Garden of Johannes Gutenberg University Mainz, DE, 2004].
251. *Silene cintrana* Rothm. [Tropical Botanical Garden, Lisboa, PT, 2004].
252. *Silene coeli-rosa* (L.) Godr. [The Ecological-Botanical Gardens of the University of Bayreuth, DE, 2015].
253. *Silene nutans* L. [The Botanical Garden of Graz, Institute for Plant science, Karl-Franzens-University Graz, AT, 2012].
254. *Silene quadridentata* (L.) Pers. [The Botanic Garden of the University of Padua, IT, (Monte Faverghera, Belluno (BL), 1500 m), 2004].
255. *Silene vulgaris* (Moench) Garcke (<http://www.theplantlist.org>), [(*Silene zawadskii* Fenzl), The Munich Botanical Garden, Nymphenburg, DE, 2004].
256. *Viscaria vulgaris* Bernh. [Botanical Garden of the Medical University of Gdansk, PL, 2011].

CHENOPODIACEAE Vent.

257. *Atriplex hortensis* L. ‘Rubra’ [Botanic Garden of the University of Copenhagen, DK, 2002].
258. *Atriplex tornabenei* Tineo [Vilnius University Botanical Garden, LT, 2004].
259. *Chenopodium bonus – henricus* L. [Institute of Botany of the Nature Research Centre, Vilnius, LT, 2002].
260. *Chenopodium schraderianum* Schult. [Institute of Botany of the Nature Research Centre, Vilnius, LT, 2002].
261. *Kochia scoparia* (L.) Schrad.* [Botanical Garden of Maria Curie-Skłodowska University, Lublin, PL, 2006].

CISTACEAE Juss.

262. *Helianthemum alpestre* (Jacq.) DC. [The Botanic Garden of the Georg-August-University, Goettingen, DE, 2005].
263. *Helianthemum grandiflorum* (Scop.) DC. [Botanical Garden of Leipzig University, DE, 2012].
264. *Helianthemum lippii* Pers. [Vilnius University Botanical Garden, LT, 2005].
265. *Helianthemum nummularium* (L.) Mill [University of Salzburg Departement of organismic biology study group Botanical Garden, AT, (University of Tromso, NO), 2006].
266. *Helianthemum oelandicum* (L.) DC. ssp. *alpestre* (Jacq.) Breistr. [The Botanical Garden of the University of Tübingen, DE, 2003].
267. *Helianthemum scardicum* [Kovacs Pal Rock Garden, Dorog, HU, 2008].

CONVOLVULACEAE Juss.

268. *Ipomoea purpurea* (L.) Roth. [The Botanical Garden of the University of Ulm, DE, 2015].
269. *Ipomoea purpurea* (L.) Roth. ‘Dark purple’ [The Ecological-Botanical Gardens of the University of Bayreuth, DE, 2015].
270. *Ipomoea magnusiana* Schinz. [Botanic Garden/Arboretum Henri Gaussen, Toulouse, FR, 2015].

CRASSULACEAE DC.

271. *Rhodiola rhodantha* (Gray) Jacobsen* [Akureyri Botanical Garden, IS, (Denver HB 1994 Spont.: Upper Mohawk Lake, Ten Mile Range, Summit County, Colorado, 3780 m), 2007].

CUCURBITACEAE Juss.

272. *Cyclanthera pedata* (L.) Schrader. [Botanical Garden of the University of Zurich, CH, 2012].

DIPSACACEAE Juss.

273. *Dipsacus fullonum* L. [Botanic Garden of Rostock University, DE, 2013].
274. *Dipsacus pilosus* L.* [The Botanical Garden of the University of Regensburg, DE, 2011].
275. *Knautia godetii* Reut. [Botanical Garden of the University of Zurich, CH, 2012].
276. *Knautia macedonica* Griseb. [Botanical Garden of the University of Tartu, EE, 2000].
277. *Morina persica* L. [Botanic Garden of the University of Stuttgart-Hohenheim, Stuttgart, DE, 2013].
278. *Scabiosa* ‘Nana’ [Arboretum “Dimzas”, LV, 2013].
279. *Scabiosa columbaria* L. [Botanical Garden of Friedrich Schiller University of Jena, DE, 2012].

280. *Scabiosa cretica* L.* [Royal Horticultural Society Garden Wisley, Surrey, GB, 2012].
 281. *Scabiosa georgica* Sulak. [University of Alberta Devonian Botanic Garden, CA, 2012].
 282. *Scabiosa graminifolia* L.* [The Alpine Botanical Garden “Viotte”, Trento, IT, 2002].
 283. *Scabiosa japonica* var. *alpina* Takeda* [The Botanical Garden Bielefeld, DE, 2010].
 284. *Scabiosa lucida* Vill. ‘Nana’* [G. Pociūlienė. Private collection, Pakalniškiai, Radviliškis district, LT, 2012].

ERICACEAE Juss.

285. *Bruckenthalia spiculifolia* (Salisb.) Reichenb. [The Botanical Garden of the University of Tübingen, DE, 2003].
 286. *Gaultheria mucronata* (L. f.) Hook. et Arn. [National Botanic Garden, Glasnevin, IE, 2003].
 287. *Gaultheria procumbens* L.* [Botanic Garden of the University of Stuttgart-Hohenheim, Stuttgart, 2003].
 288. *Kalmia latifolia* f. *myrtifolia* (Bosse) K. Koch.* [Batumi Botanical Garden of the Academy of Sciences, GE, 2007].
 289. *Kalmia polifolia* Wangenh.* [Salaspils National Botanical Garden, LV, 2003].
 290. *Ledum groenlandicum* Oeder [Tallinn Botanic Garden, EE, 2004].
 291. *Menziesia pilosa* (Michx.) Juss.* [The Botanical Garden of the University of Tübingen, DE, 2003].
 292. *Rhododendron brachycarpum* G.* Don [Rhododendron nursery Babite University of Latvia, LV, 2003].
 293. *Rhododendron canadense* (L.) Torr. [Rhododendron nursery Babite University of Latvia, LV, 2003].
 294. *Rhododendron catawbiense* Michx. [Salaspils National Botanical Garden, LV, 2002].
 295. *Rhododendron dauricum* L.* [Rhododendron nursery Babite University of Latvia, LV, 2003].
 296. *Rhododendron hirsutum* L.* [Rhododendron nursery Babite University of Latvia, LV, 2003].
 297. *Rhododendron japonicum* (A. Gray) Suring.* [Rhododendron nursery Babite University of Latvia, LV, 2002].
 298. *Rhododendron japonicum* ‘Album’* [Russian Academy of Sciences far East Branch Sakhalin Botanical Garden, RU, 2004].
 299. *Rhododendron luteum* (L.) Sweet [Rhododendron nursery Babite University of Latvia, LV, 2002].
 300. *Rhododendron maximum* L.* [Rhododendron nursery Babite University of Latvia, LV, 2003].
 301. *Rhododendron minus* Michx.* [Rhododendron nursery Babite University of Latvia, LV, 2003].
 302. *Rhododendron minus* var. *album* [Rhododendron nursery Babite University of Latvia, LV, 2003].
 303. *Rhododendron mucronulatum* Turcz. [Rhododendron nursery Babite University of Latvia, LV, 2003].
 304. *Rhododendron schlippenbachii* Maxim.* [Rhododendron nursery Babite University of Latvia, LV, 2002].
 305. *Rhododendron smirnowii* Trautv. [Tallinn Botanic Garden, EE, 2003].
 306. *Rhododendron viscosum* (L.) Torr. [Rhododendron nursery Babite University of Latvia, LV, 2003].
 307. *Rhododendron yedoense* Maxim. var. *poukhanense* Nakai (Cullen, 2005), [(*Rhododendron poukhanense*) Botanical Garden-Institute Vladivostok, RU, 2004].
 308. *Tripetaleia bracteata* Maxim.* (Cullen, 2005), [(*Botryostege bracteata* (Maxim.) Stapf.), Salaspils National Botanical Garden, LV, 2003].

FABACEAE Lindl.

309. *Anthyllis coccinea* (L.) Beck [Collector V. Motiekaitytė, LT, 2006].
 310. *Anthyllis macrocephala* Wend. [Botanic Garden of Ivan Franko National University of Lviv, UA, 2000].
 311. *Anthyllis montana* L. subsp. *carminea* [The Botanical Garden La Jaysinia, Samoëns, FR, 2012].
 312. *Astragalus adsurgens* Pall. [Botanical garden of Ernst-Moritz-Arndt University Greifswald, DE, 2004].
 313. *Astragalus ponticus* Pall.* [Institute of Ecology and Botany Hungarian Academy of Sciences Botanical Garden, Vacratot, HU, 2012].
 314. *Baptisia australis* (L.) R. Br. [Traupio Botanical Garden, LT, 2001].
 315. *Cytisus emeriflorus* Rchb. [Alpine Botanical Garden of Lautaret, FR, 2005].
 316. *Genista radiata* (L.) Scop.* [The Alpine Botanical Garden “Rezia”, Bormio, IT, 2005].
 317. *Genista sagittalis* L. [Salaspils National Botanical Garden, LV, 2006].
 318. *Glycyrrhiza echinata* L. [Botanic Gardens and Arboretum Mendel University of Agriculture and Forestry Brno, CZ, 2004].
 319. *Glycyrrhiza uralensis* Fisch. [Central Botanical Garden of National Academia Science of Belarus, Minsk, BY, 2004].
 320. *Lathyrus pisiformis* L. [Vilnius University Botanical Garden, LT, 2001].
 321. *Lens culinaris* Medik.* [Botanical Garden of the University of Zurich, CH, 2014].
 322. *Onobrychis montana* DC. [Botanical Garden of P. J. Šafárik University, Košice, SK, 2010].
 323. *Onobrychis petraea* (Willd.) Fisch. [Botanical Garden of Pyatigorsk State Pharmaceutical Academy, RU, 2004].
 324. *Onobrychis viciifolia* Scop.* [Universtiy of Salzburg Department of organismic biology Study Group Botanical Garten, (Austria, Salzburg, Osterhorngruppe, St. Koloman SE, Seewaldsee W 0,5 km, roadside embankement, limestone, 1000 msm, 7/09 M), AT, 2009].
 325. *Oxytropis todomoshiriensis* Miyabe et Miyake [Botanical Garden University Innsbruck, AT, 2011].
 326. *Thermopsis lupinoides* (L.) Link [Russian Academy of Sciences far East Branch Sakhalin Botanical Garden, RU, 2004].

327. *Vicia unijuga* A. Br. [The Botanical Garden of Bonn University, DE, 2004].

GENTIANACEAE Juss.

328. *Frasera caroliniensis* Walter [Botanic Garden of Technical University Dresden, DE, 2005].
329. *Gentiana asclepiadea* L. [Botanical Garden Rennsteiggarten Oberhof, DE, 2011].
330. *Gentiana asclepiadea* L. 'Alba' [Botanical Garden Rennsteiggarten Oberhof, DE, 2011].
331. *Gentiana asclepiadea* L. 'Rosea' [Austrian Horticultural Society, National Group Styria, Graz, AT, 2011].
332. *Gentiana burseri* Lapeyr. ssp. *burseri* [Botanical Garden University of Oslo, NO, 2004].
333. *Gentiana cruciata* L.* [Botanical Garden of Lodz, PL, 2003].
334. *Gentiana dendrologi* C. Marguand [The Munich Botanical Garden, Nymphenburg, DE, 2004].
335. *Gentiana freyniana* Bornm. ex Freyn [Botanical Garden University of Oslo, NO, 2003].
336. *Gentiana lutea* L. [The Botanical Garden of the University of Regensburg, DE, 2004].
337. *Gentiana olivieri* Griseb. [Botanical Garden of Friedrich Schiller University of Jena, DE, 2011].
338. *Gentiana puberulenta* J. S. Pringle [University of Alberta Devonian Botanic Garden, CA, 2004].
339. *Gentiana septemfida* Pall. [Kaunas Botanic Garden of Vytautas Magnus University, LT, 2000].
340. *Gentiana straminea* Maxim [The Alpine Botanical Garden "Paradisica", IT, 2007].
341. *Gentiana tianschanica* Rupr. [The Botanical Garden of the University of Regensburg, DE, 2004].
342. *Gentiana tibetica* King. ex Hook. f. [Botanical Garden of the Christian Albrechts University of Kiel, DE, 2010].
343. *Gentiana walujewii* Regel et Schmalh. (<http://www.theplantlist.org>), [(*Gentiana walujewii* var. *kesselringii* Regel), University of Alberta Devonian Botanic Garden, CA, 2004].

GERANIACEAE Juss.

344. *Geranium bohemicum* L. [Botanic Garden of the Philipp University of Marburg, DE, 2011].
345. *Geranium psilostemon* Ledeb. [The Munich Botanical Garden, Nymphenburg, DE, (Georgia, Ratscha, above M'Tiscalta, 42°29'36"N 43°21'55"E, 1960 m), 2009].
346. *Geranium thunbergii* Siebold ex Lindl. et Paxton [RHS Garten Wisley, UK, 2008].

GLOBULARIACEAE DC.

347. *Globularia punctata* Lapeyr. [Salaspils National Botanical Garden, LV, 2003].
348. *Globularia trichosantha* Fischer et G. A. Mey [Vilnius University Botanical Garden, LT, 2007].

HYDROPHYLLACEAE R. BR.

349. *Hydrophyllum virginianum* L. [The Botanical Garden of Krefeld, DE, 2006].

HYPERICACEAE Juss.

350. *Hypericum x inodorum* Mill.* [Botanic Garden of the University of Stuttgart-Hohenheim, Stuttgart, DE, 2006].
351. *Hypericum przewalskii* Maxim.* [University of Alberta Devonian Botanic Garden, CA, 2004].

LAMIACEAE Lindl.

352. *Acinos alpinus* (L.) Moench [Botanical Garden of Maria Curie-Skłodowska University, Lublin, PL, 2004].
353. *Betonica officinalis* L. [The Trieste Municipal Botanic Garden, IT, 2010].
354. *Dracocephalum argunense* Fisch. ex Link [Botanical Garden University of Oslo, NO, 2007].
355. *Dracocephalum botryoides* Steven [Botanic Garden and Arboretum Mendel University of Agriculture and Forestry Brno, CZ, 2011].
356. *Dracocephalum imberbe* Bunge [Reykjavik Botanical Garden, IS, 2010].
357. *Dracocephalum renati* Emb. [Botanic Garden and Arboretum Mendel University of Agriculture and Forestry Brno, CZ, 2011].
358. *Dracocephalum tanguticum* Maxim. [The Alpine Botanical Garden "Rezia", Bormio, IT, 2009].
359. *Dracocephalum wendelboi* Hedge [Reykjavik Botanical Garden, IS, 2012].
360. *Horminum pyrenaicum* L. [Salaspils National Botanical Garden, LV, 2001].
361. *Lavandula angustifolia* Mill.* [Institute of Horticulture, Lithuanian Research Centre for Agriculture and Forestry, Babtai, Kaunas district, LT, 1999].
362. *Marrubium velutinum* Sm. [Botanical Garden of the Christian Albrechts University of Kiel, DE, 2004].
363. *Nepeta grandiflora* M. Bieb. [The Botanical Garden of the University of Ulm, DE, 2004].
364. *Nepeta sibirica* L. [Botanic Garden of Petrozavodsk State University, RU, 2003].
365. *Nepeta wilsonii* Duthie [Prague Botanical Garden, CZ, 2012].
366. *Phlomis russeliana* (Sims) Benth.* [Botanic Garden of Cologne, DE, 2004].
367. *Phlomis samia* L. [The Botanical Garden of the Heinrich-Heine University, Dusseldorf, DE, 2004].
368. *Salvia aethiopsis* L. [Kaunas Botanic Garden of Vytautas Magnus University, LT, 2004].
369. *Salvia austriaca* Jacq. [The Botanic Garden of the University of Oulu, FI, 2013].

370. *Salvia judaica* Boiss. [The Alpine Botanical Garden “Rezia”, Bormio, IT, 2015].
 371. *Salvia jurisicii* Kosanin [Kaunas Botanic Garden of Vytautas Magnus University, LT, 2003].
 372. *Salvia transylvanica* (Grisebach) Schur.* [Botanical Garden of La Gacilly, FR, 2009].
 373. *Salvia verticillata* L. [The Trieste Municipal Botanic Garden, IT, 2003].
 374. *Scutellaria alpina* L.* [Botanic Garden of Johannes Gutenberg University Mainz, DE, 2002].
 375. *Scutellaria altissima* L. [National Botanic Garden of Belgium, Meise, BE, 2004].
 376. *Scutellaria rubicunda* Hornem. [Botanical Garden of Amsterdam University, NL, 2004].
 377. *Scutellaria woronowii* Juz. [Botanic Garden of Nantes, FR, 2005].
 378. *Sideritis glacialis* Boiss. [The Botanical Garden Aarhus, DK, 2004].
 379. *Sideritis hyssopifolia* L. [The Alpine Botanical Garden “Viotte”, Trento, IT, 2004].
 380. *Stachys abchasica* (N. Pop ex Grossh.) Czer. [Salaspils National Botanical Garden, LV, 2002].
 381. *Stachys macrantha* ‘Rosea’ [National Botanic Garden, Glasnevin, IE, 2004].
 382. *Stachys pradica* (Zanted.) Greuter et Pignatti* [The Alpine Botanical Garden “Paradisia”, IT (Courmayeur, V. Veni, 2200 m), 2009].
 383. *Teucrium botrys* L. [Botanic Garden of Technical University Dresden, DE, 2014].
 384. *Thymus praecox* Opiz ssp. *arcticus* (Durand) Jalas [Reykjavik Botanical Garden, IS (W-Iceland: Hvalfjörður, Flekkudalur, 64°18' N 21° 34' W), 2011].

LINACEAE DC. ex Gray

385. *Linum altaicum* Ledeb. ex Juz. [The Botanical Garden of Bonn University, DE, 2003].
 386. *Linum campanulatum* L. [The Botanical Garden of the University of Münster, DE, 2008].
 387. *Linum extraaxillare* Kit. [Botanical Garden of P. J. Šafarik University, Kosice, SK, 2004].
 388. *Linum flavum* L.* [Vilnius University Botanical Garden, LT, 2001].
 389. *Linum perenne* L.* [Institute of Ecology and Botany Hungarian Academy of Sciences Botanical Garden Vacratot, HU, 2006].

LOASACEAE Spreng.

390. *Blumenbachia insignis* Schrad. [Botanic Garden of the University of Stuttgart-Hohenheim, Stuttgart, DE, 2003].
 391. *Loasa tricolor* Ker Gawl. [Botanic Garden of the University of Stuttgart-Hohenheim, Stuttgart, DE, 2015].

MALVACEAE Juss.

392. *Abronia augustum* (L.) L. f. [Botanical Garden of Friedrich Schiller University of Jena, DE, 2015].
 393. *Abutilon theophrasti* Medik.* [The Kyoto Botanical Garden, JP, 2010].
 394. *Alcea ficifolia* L. [The Alpine Botanic Garden of Pietra Corva, Milan, IT, 2013].
 395. *Alcea rosea* L. [The Botanical Garden of Besançon, FR, 2006].
 396. *Alcea rosea* L. var. *alba* [The Alpine Botanic Garden of Pietra Corva, Milan, IT, 2013].
 397. *Althaea cannabina* L. [The Botanical Garden of the University of Latvia, Riga, LV, 2009].
 398. *Althaea officinalis* L. [Botanical Garden of the Christian Albrechts University of Kiel, DE, 2008].
 399. *Anoda hastata* Cav.* [Botanical Garden of Clermont-Ferrand, FR, 2014].
 400. *Hibiscus trionum* L. [Botanic Garden of University of Konstanz, DE, 2015].
 401. *Kिताibela vitifolia* Willd. [Botanical Garden of Amsterdam University, NL, 2004].
 402. *Lavatera thuringiaca* L. [Experimental Station of Field Floriculture, LT, 2003].
 403. *Lavatera trimestris* L. ‘Silver Cup’* [Station of Nature Research and Environmental Education, Marijampolė, LT, 2014].
 404. *Malva alcea* L. [The Botanical Garden of St. Triphon, CH, 2009].
 405. *Malva trimestris* (L.) Kuntze [Botanic Garden of Technical University Dresden, DE, 2014].
 406. *Sida hermaphrodita* (L.) Rusby [Botanic Garden of Warsaw University, PL, 2012].
 407. *Sida napaea* Cav. [Kaunas Botanic Garden of Vytautas Magnus University, LT, 2000].

NOLANACEAE Dum.

408. *Nolana humifusa* (Gouan) I. M. Johnst. * [Botanical Garden of the Technical University Braunschweig, DE, 2011].
 409. *Nolana paradoxa* Dick Culbert [Botanical Garden of Technical University Braunschweig, DE, 2015].

ONAGRACEAE Juss.

410. *Clarkia amoena* (Lehm.) A. Nels. & J. F. Macbr. [Botanic Garden of Technical University Dresden, DE, 2015].
 411. *Clarkia bottae* (Spach) H. F. Lewis & M. E. Lewis [Botanic Garden of the University of Stuttgart-Hohenheim, Stuttgart, DE, 2015].
 412. *Clarkia pulchella* Pursh. [Botanic Garden of Technical University Dresden, DE, 2015].
 413. *Epilobium fleischeri* Hochst. [Botanical Garden of the University of Zurich, CH, Switzerland, Saas Almagell VS; 2238 m, 2007].

414. *Epilobium parviflorum* Schreb.* [Botanical Garden of the Christian Albrechts University of Kiel, DE, 2013].
 415. *Megapterium missouriense* (Sims) Spach [The Botanical Garden of Besançon, FR, 2013].
 416. *Oenothera minima* Pursh. [Botanic Gardens and Arboretum Mendel University of Agriculture and Forestry Brno, CZ, 2010].
 417. *Oenothera missouriensis* Sims [Botanic Garden and Arboretum Mendel University of Agriculture and Forestry Brno, CZ, 2012].
 418. *Oenothera triloba* Nutt.* [Alexandru Borza Cluj-Napoca University Botanic Garden, RO, 2013].

PAEONIACEAE F. Rudolphi

419. *Paeonia mascula* (L.) Mill. ssp. *arietina* Heywood [Botanical Garden University Innsbruck, AT, (W/TR-NO-1950 m), 2010].
 420. *Paeonia mlokosewitschii* Lomakin [Botanic Garden of Nantes, FR, 2007].
 421. *Paeonia rockii* (S. G. Haw et Lauener) T. Hong et J. J. Li ex D. Y. Hong [The Botanical Garden of Ljubljana, SI, 2007].
 422. *Paeonia veitchii* Lynch [Botanic Garden and Botanical Museum Berlin – Dahlem, DE, 2006].

PAPAVERACEAE Juss.

423. *Argemone mexicana* L. [The Ecological-Botanical Gardens of the University of Bayreuth, DE, 2004].
 424. *Glaucium flavum* Crantz [Kaunas Botanic Garden of Vytautas Magnus University, LT, 2000].
 425. *Macleaya microcarpa* (Maxim.) Fedde* [The Botanical Garden of the University of Regensburg, DE, 2004].
 426. *Meconopsis cambrica* (L.) Vig. [Botanic Garden of Nantes, FR, 2002].
 427. *Papaver argemone* L.* [Botanical Garden of Martin Luther University of Halle-Wittenberg, DE, 2014].
 428. *Papaver bracteatum* Lindl. [The Botanical Garden of the University of Regensburg, DE, 2004].
 429. *Papaver nudicaule* L. [Botanic Garden of Rennes, FR, 2011].
 430. *Papaver rupifragum* Boiss et Reut [Botanical Garden of the University of Zurich, CH, 2014].

PASSIFLORACEAE Juss. ex Roussel

431. *Passiflora adenopoda* DC. [Tropical Botanical Garden, Lisboa, PT, 2011].

PLANTAGINACEAE T. Lestib. ex Dumort.

432. *Plantago lanceolata* L.* [The Antwerp Botanical Garden, BE, 2009].
 433. *Plantago major* L. ‘Rosularis’* [G. Pociūlienė. Private collection, Pakalniškiai, Radviliškis district, LT, 2012].

PLUMBAGINACEAE Juss.

434. *Armeria arctica* (Cham.) Wallr.* [National Botanic Garden, Glasnevin, IE, 2005].
 435. *Armeria labradorica* Wallr.* [Botanical Garden of the Christian Albrechts University of Kiel, DE, 2003].
 436. *Armeria maritima* (Mill.) Willd. [The Alpine Botanical Garden “Rezia”, Bormio, IT, 2010].
 437. *Armeria maritima* (Mill.) Willd. ‘Alba’ [Botanical Garden “Ceplez” Milan, IT, 2008].
 438. *Armeria pseudarmeria* (Murray) Mansf. [Botanic Garden and Botanical Museum Berlin-Dahlem, DE, 2009].
 439. *Armeria rusciniensis* Girard* [Botanical Garden of Klaipėda University, LT, 2010].
 440. *Armeria sibirica* Turcz. ex Boiss. [Botanical Garden of the Carinthian Botanic Center, Klagenfurt, AT, 2008].
 441. *Armeria splendens* (Lagasca et Rodr.) Webb. [Kaunas Botanic Garden of Vytautas Magnus University, LT, 2008].

POLEMONIACEAE Juss.

442. *Linanthus liniflorus* (Benth.) Greene [The Botanical Garden of the Heinrich-Heine University, Dusseldorf, DE, 2007].
 443. *Phlomis macrophylla* Benth. [Prague Botanical Garden, CZ, 2012].

POLYGONACEAE Juss.

444. *Fagopyrum esculentum* Moench ‘Narimskaja Mestnaja’* [Siberian Botanical Garden of Tomsk State University, RU, 2012].
 445. *Fagopyrum esculentum* Moench ‘Vokiai’ [Vilnius University Botanical Garden, LT, 2006].
 446. *Rheum compactum* L. [Akureyri Botanical Garden, IS, 2012].
 447. *Rheum rhaponticum* L. ‘Altaickie Zori’ [Siberian Botanical Garden of Tomsk State University, RU, 2012].
 448. *Rumex conglomerathus* Murray [The Botanical Garden of the University of Münster, DE, 2003].
 449. *Rumex thianshanicus* Losinsk. [The Botanical Garden of Bonn University, DE, 2004].

PRIMULACEAE Vent.

450. *Androsace albana* Steven. [Alpine Botanical Garden of Lautaret, FR, 2007].
 451. *Androsace carnea* L. [Botanical Garden of the Ruhr University Bochum, DE, 2005].
 452. *Primula elatior* Hill [Botanical Gardens of Clermont-Ferrand, FR, 2009].

453. *Primula pallasii* Lehm. [Botanic Garden of Petrozavodsk State University, RU, 2004].
 454. *Primula veris* L. [The Botanical Garden of the University of Latvia, Riga, LV, 2009].

RANUNCULACEAE Juss.

455. *Aconitum anthora* L. [Botanic The Alpine Botanical Garden “Paradisja”, IT, 2004].
 456. *Aconitum barbatum* Patrin ex Pers. [Botanical Garden of the Carinthian Botanic Center, Klagenfurt, AT, 2006].
 457. *Aconitum carmichaelii* Debeaux var. *arendsii* Hort.* [The Ecological-Botanical Garden of the University of Bayreuth, DE, 2011].
 458. *Aconitum compactum* Reichb.* [The Ecological-Botanical Gardens of the University of Bayreuth, DE, 2009].
 459. *Aconitum decipiens* Vorosch. et Anfalov* [The Botanical Garden of the University of Regensburg, DE, 2011].
 460. *Aconitum fischeri* Reichenb [The Botanical Garden of the University of Regensburg, DE, 2001].
 461. *Aconitum lycoctonum* L. (<http://www.theplantlist.org>), [*Aconitum lupicida* Rchb. Universitat The Botanical Garden of Graz, Institute for Plant science, Karl-Franzens-University Graz, AT, (Italien, N-Seite des Jof di Montasio, 1578 m), 2006].
 462. *Aconitum moldavicum* Hacq. [The Botanical Garden of University of Debrecen, HU, 2005].
 463. *Aconitum napellus* L. ‘Kleiner Ritter’ [The Ecological - Botanical Garden of the University of Bayreuth, DE, 2011].
 464. *Aconitum tanguticum* (Maxim.) Stapf [Göteborg Botanical Garden, SE, 2007].
 465. *Aconitum vulparia* Rchb.* [Botanic Garden and Arboretum Mendel University of Agriculture and forestry Brno, CZ, 2006].
 466. *Actaea rubra* (Ait.) Willd. [Salaspils National Botanical Garden, LV, 2002].
 467. *Anemonastrum narcissiflorum* (L.) Holub* [University of Salzburg Department of Organismic Biology Study Group Botanical Garden, AT, 2009].
 468. *Anemone altaica* Fisch. ex C. A. Mey. [Botanic Garden of the Comenius University, Bratislava, SK, 2004].
 469. *Anemone demissa* Hook. f. et Thomson [The Botanical Garden of Bonn University, DE, 2010].
 470. *Anemone leveillei* Ulbr. [Kaunas Botanic Garden of Vytautas Magnus University, LT, 2000].
 471. *Anemone nemerosa* L. [Experimental station of Field floriculture, LT, 2003].
 472. *Anemone rupicola* Cambess. ex Jacquem. [Collector A. Grišaitė, (The Botanical Garden of Schellerhau, DE), 2011].
 473. *Aquilegia* ‘Roman Bronze’* [University of Alberta Devonian Botanic Garden, CA, 2012].
 474. *Aquilegia* ‘Ruby Port’ [Akureyri Botanical Garden, IS, 2013].
 475. *Aquilegia atrata* W. D. J. Koch* [Institute of Ecology and Botany Hungarian Academy of Sciences Botanic Garden, Vacratot, HU, 2005].
 476. *Aquilegia canadensis* L. [Botanical Garden of Leipzig University, DE, 2012].
 477. *Aquilegia chrysantha* A. Gray [The Botanical Garden of the University of Tübingen, DE, 2002].
 478. *Aquilegia flabellata* Sieb. et Zucc. ‘Alba’ [Institute of Botany Academy of Sciences of the Czech Republik, Pruhonice, CZ, 2005].
 479. *Aquilegia formosa* Fisch. ex DC.* [The Botanical Garden of St. Triphon, CH, 2010].
 480. *Aquilegia olympica* Boiss. [Botanical Garden of the Carinthian Botanic Center, Klagenfurt, AT, 2010].
 481. *Aquilegia skinneri* Hook. [Botanical Garden of Leipzig University, DE, 2012].
 482. *Clematis integrifolia* L.* [Botanical Garden of the Voroneszh University B. M. Kozo - Poljanskii, RU, 2009].
 483. *Clematis viticella* L. [Skinderiškis Dendrology Park, Pajieslys, Kėdainiai district, LT, 2002].
 484. *Consolida ajacis* (L.) Schur [University of Ferrara Botanic Garden, IT, 2004].
 485. *Delphinium brunonianum* Royle [Botanical Garden, Faculty of Science, Palacky University in Olomouc, CZ, 2009].
 486. *Delphinium cashmerianum* Royle [The Alpine Botanical Garden “Viotte”, Trento, IT, 2002].
 487. *Delphinium pictum* Wild ssp. *pictum** [The Söllner Botanic Garden, ES, 2004].
 488. *Delphinium pyramidatum* Albov [The Botanical Garden of the University of Ulm, DE, 2009].
 489. *Delphinium tatsienense* Franch. [Botanical Garden University of Oslo, NO, 2003].
 490. *Pulsatilla albana* (Stev.) Bercht. et J. Presl [Botanical Garden of Pyatigorsk State Pharmaceutical Academy, RU, 2004].
 491. *Pulsatilla armena* Rupr. [The Alpine Botanical Garden “Paradisja”, IT, 2005].
 492. *Pulsatilla campanella* Fisch. ex Krylov* [Botanical Garden University Innsbruck, AT, 2010].
 493. *Pulsatilla davurica* Spreng.* (<http://www.ipni.org>), [(*Pulsatilla davurica* (Fisch.ex DC.) Spreng.), The Amur Branch of Botanical Garden-Institute, Far-East Division, Russian Academy of Sciences, Blagoveschensk, RU, 2011].
 494. *Pulsatilla gayeri* Simonk. [Institute of Ecology and Botany Hungarian Academy of Sciences Botanic Garden, Vacratot, HU, 2005].
 495. *Pulsatilla multifida* (L.) Miller ssp. *multifida* (Pritz.) Zamelis* [The South-Siberian Botanical Garden, Barnaul, RU, 2009].
 496. *Pulsatilla regeliana* (Maxim.) Pavlov* [Botanical Garden Rennsteiggarten Oberhof, DE, 2010].

497. *Pulsatilla styriaca* (Pritzl) Simk. [The Botanical Garden of Graz, Institute for Plant science, Karl-Franzens-University Graz, AT, 2006].
498. *Pulsatilla vulgaris* Mill. [Botanic Garden of St. Petersburg Forestry Academy, RU, 2003].
499. *Pulsatilla vulgaris* Mill. 'Rote Glocke' [Arboretum "Kokaudzētava Baltezers", LV, 2004].
500. *Pulsatilla zimmermannii* Soo [Botanical Garden of the University of Potsdam, DE, 2006].
501. *Ranunculus auricomus* L.* [Botanic Garden of Šiauliai University, LT, 1997].
502. *Semiaquilegia ecalcarata* (Maxim.) Sprang. et Hut. [Botanical Garden of the University of Tartu, EE, 2010].
503. *Thalictrum bauginii* Crantz. [Kaunas Botanic Garden of Vytautas Magnus University, LT, 2000].
504. *Thalictrum calabricum* Spreng. [Kaunas Botanic Garden of Vytautas Magnus University, LT, 2000].
505. *Thalictrum chelidonii* DC. [The Botanical Garden of the University of Regensburg, DE, (Alpine Garden Club of British Columbia), 2011].
506. *Thalictrum foetidum* L. [Institute of Ecology and Botany Hungarian Academy of Sciences Botanic Garden, Vacratot, HU, 2003].
507. *Thalictrum petaloideum* L.* [The South-Siberian Botanical Garden, Barnaul, RU, 2011].
508. *Thalictrum rochebrunnianum* Franch. et Sav. [The Botanical Garden of the University of Regensburg, DE, 2011].
509. *Trollius acaulis* Lindl. [The Botanical Garden of the University of Regensburg, DE, 2006].
510. *Trollius altaicus* C. A. Mey. [The Botanical Garden of the University of Regensburg, DE, 2009].
511. *Trollius chinensis* Bunge [Botanic Garden of the Philipp University of Marburg, DE, 2009].
512. *Trollius macropetalus* F. Schmidt [Botanical Garden-Institute Vladivostok, RU, 2010].

RESEDACEAE DC. ex Gray.

513. *Reseda lutea* L. [Botanical Garden of the Christian Albrechts University of Kiel, DE, 2009].
514. *Reseda phyteuma* L. [The Botanical Garden of Krefeld, DE, 2007].

ROSACEAE Juss.

515. *Acaena alpina* Poepp. ex Walp. [Botanical Garden Teplice, CZ, 2010].
516. *Acaena novaezealandiae* Kirk [The Botanical Garden of Bonn University, DE, 2005].
517. *Agrimonia procera* Wallr.* [Kaunas Botanic Garden of Vytautas Magnus University, LT, 2001].
518. *Alchemilla mollis* (Buser) Rothmaler [Experimental Station of Field Floriculture, LT, 2002].
519. *Dryas drummondii* Richardson ex Hook. [The Botanical Garden of the University of Regensburg, DE, 2002].
520. *Dryas hookeriana* Jusepc. [The Alpine Botanical Garden "Rezia", Bormio, IT, 2008].
521. *Dryas octopetala* L. var. *vestita* Beck [Botanical Garden Rennsteiggarten Oberhof, DE, 2010].
522. *Filipendula palmata* (Pall.) Maxim.* [Kaunas Botanic Garden of Vytautas Magnus University, LT, 2004].
523. *Geum rivale* L. [Geneva City Conservatory and Botanical Garden, CH, 2009].
524. *Geum urbanum* L. [Vera Csapody Hardy Plant Society of Hungary, Budapeštas, HU, 2012].
525. *Horkelia fusca* Lindl. [Botanical Garden of the University of Tartu, EE, 2011].
526. *Potentilla ancistrifolia* var. *dickensii* (Franch. et Sav.) Koidz.* (<http://zipcodezoo.com/Plants>), [(*Potentilla dickinsii* Franchet et Sav.), Reykjavik Botanical Garden, IS, (Japan: Honshu, Tochigi prefecture, Mt. Kassi), 2010].
527. *Potentilla andicola* Benth. [Botanical Garden of the Christian Albrechts University of Kiel, DE, 2005].
528. *Potentilla atosanguinea* D. Don [The Alpine Botanical Garden "Saussurea", Courmayeur, IT, 2007].
529. *Potentilla collina* Wibel [The Botanical Garden of Krefeld, DE, 2009].
530. *Potentilla fissa* Nutt. [The Alpine Botanical Garden "Viotte", Trento, IT, 2004].
531. *Potentilla norvegica* L. [The Botanical Garden of Bonn University, DE, 2004].
532. *Sanguisorba albiflora* (Makino) Makino [Botanical Garden, Faculty of Science, Palacky University in Olomouc, CZ, 2012].
533. *Sanguisorba alpina* Bunge* [Botanical Garden of the University of Tartu, EE, 2011].
534. *Sanguisorba dodecandra* Moretti* [Tallinn Botanic Garden, EE, 2004].
535. *Sanguisorba magnifica* I. Schischkin et Kom.* [Kaunas Botanic Garden of Vytautas Magnus University, LT, 2000].
536. *Sanguisorba menziesii* Rydb. [The Botanical Garden of the University of Regensburg, DE, 2012].
537. *Sanguisorba officinalis* L. [Botanical garden of the university Vienna, AT, 2013].
538. *Waldsteinia ternata* (Stephan) Fritsch [Botanical Garden of the University of Tartu, EE, 2001].

SAXIFRAGACEAE Juss.

539. *Elmera racemosa* (S. Watson) Rydb. [Botanical Garden of the University of Tartu, EE, 2009].
540. *Heuchera americana* L*. [Botanic Garden and Arboretum Mendel University of Agriculture and Forestry Brno, CZ, 2004].
541. *Heuchera cylindrica* Douglas ex Hook. [Salaspils National Botanical Garden, LV, 2003].
542. *Heuchera curtisii* Torr. et A. Gray [Reykjavik Botanical Garden, IS, 2004].
543. *Heuchera pilosissima* Fisch. et May.* [Botanic Garden of the Jagiellonian University, Kraków, PL, 2004].

544. *Heuchera pulchella* Wooton et Standl.* [Gothenburg Botanical Garden, SE, (USA: New Mexico, Bernalillo Co, 3200 m), 2010].
545. *Mitella caulescens* Nutt. [Institute of Ecology and Botany Hungarian Academy of Sciences Botanic Garden, Vacratot, HU, 2003].
546. *Saxifraga australis* Moric. [The Alpine Botanical Garden “Viotte”, Trento, IT, 2005].
547. *Saxifraga callosa* Sm. [Botanic Garden and Arboretum Mendel University of Agriculture and Forestry Brno, CZ, 2007].
548. *Saxifraga exarata* Villars [Alpine Botanical Garden of Lautaret, FR, 2005].
549. *Saxifraga federici-augusti* Biasol. ssp. *grisebachii* (Degen et Dörf.) D. A. Webb [The Botanic Garden of the Georg-August-University, Goettingen, DE, 2007].
550. *Saxifraga hostii* Tausch [University of Oxford Botanic Garden and Harcourt Arboretum, UK, 2004].
551. *Saxifraga paniculata* Mill.* [Botanical Garden of the University of Zurich, CH, (Switzerland, Alt St. Johann SG, Churfürsten, 1620 m), 2010].
552. *Saxifraga repanda* Willd. ex Sternb.* [Experimental Station of Field Floriculture, LT, 2005].
553. *Saxifraga rosacea* Moench* [Botanical Garden University of Oslo, NO, 2003].
554. *Saxifraga rotundifolia* L. ssp. *rotundifolia* [The Botanical Garden at the Sorgenti del Cavuto, Aniversa degli Abruzzi, IT, 2004].
555. *Saxifraga trifurcata* Schrad.* [Salaspils National Botanical Garden, LV, 2002].
556. *Tellima grandiflora* (Pursh) Douglas ex Lindl. [Reykjavik Botanical Garden, IS, 2012].
557. *Tolmiea menziesii* (Pursh) Torr. et A. Gray* [Botanical Garden of Martin Luther University of Halle-Wittenberg, DE, 2006].

SCROPHULARIACEAE Juss.

558. *Calceolaria polyrhiza* Cav. [St Andrews Botanic Garden, The Canongate, UK, 2014].
559. *Chelone glabra* L. [The Montreal Botanical Garden, CA, 2010].
560. *Digitalis ferruginea* L. ssp. *schischkinii* (K. V. Ivanova) K. Werner [Botanical Garden, Faculty of Science, Masaryk University, Brno, CZ, 2006].
561. *Digitalis grandiflora* Mill. [Botanic Garden of University of Konstanz, DE, 2005].
562. *Digitalis obscura* L. [The Munich Botanical Garden, Nymphenburg, DE, (Spain, Sierra Nevada, 1700 m), 2010].
563. *Digitalis parviflora* Jacq. [The Botanical Garden Bielefeld, DE, 2010].
564. *Penstemon alpinus* Torr. [The Botanic Garden of Kerkrade, NL, 2004].
565. *Penstemon alpinus* Torr. ‘Prairie Snow’* [Botanic Garden of the Comenius University, Bratislava, SK, 2005].
566. *Penstemon caespitosus* A. Gray [Kovacs Pal Rock Garden, Dorog, HU, 2008].
567. *Penstemon cardinalis* Wooton et Standl.* [Botanical Garden University of Oslo, NO, 2010].
568. *Penstemon cardwellii* Howell [Botanical Garden Teplice, CZ, 2010].
569. *Penstemon clutei* A. Nelson* [G. Pociūlienė. Private collection, Pakalniškiai, Radviliškis district, LT, 2011].
570. *Penstemon confertus* Douglas* [Botanical Garden of the University of Tartu, EE, 2004].
571. *Penstemon davidsonii* Greene* [The Botanical Garden of Bonn University, DE, 2005].
572. *Penstemon eatonii* A. Gray [RHS Garten Wisley, UK, 2011].
573. *Penstemon humilis* Nutt. [Institute of Ecology and Botany Hungarian Academy of Sciences Botanic Garden, Vacratot, HU, 2003].
574. *Penstemon labrosus* (A. Gray) Hook. f.* [The Botanical Garden of Wrocław University, PL, 2011].
575. *Penstemon nanus* D. D. Keck* [Botanical Garden of the University of Tartu, EE, 2010].
576. *Penstemon nitidus* Douglas [Majella Larochele. Gatineau, CA, 2009].
577. *Penstemon peckii* Pennell [Botanical Garden Teplice, CZ, 2009].
578. *Penstemon procerus* Dougl. ex Graham [Botanic Garden of the University of Stuttgart-Hohenheim, Stuttgart, DE, 2003].
579. *Penstemon procerus* var. *tolmiei* (Hook.) Cronq.* [Akureyri Botanical Garden, IS, 2007].
580. *Penstemon serrulatus* J. E. Smith [Botanic Garden of the University of Stuttgart-Hohenheim, Stuttgart, DE, 2003].
581. *Penstemon strictus* Benth.* [Botanic Garden of the Philipp University of Marburg, DE, 2012].
582. *Penstemon virgatus* A. Gray [Botanical Garden Bourguignons Fenay, FRA, 2012].
583. *Verbascum chaixii* Vill. [RHS Garden Wisley, UK, 2011].
584. *Veronica allionii* Vill.* [University of Alberta Devonian Botanic Garden, CA, 2004].
585. *Veronica fruticans* Jacq. ‘Rosea’ [Botanical Garden of the University of Tartu, EE, 2004].
586. *Veronica fruticulosa* L.* [The Botanical Garden of Krefeld, DE, 2009].
587. *Veronica gentianoides* Vahl [Botanical Garden of the Christian Albrechts University of Kiel, DE, 2002].
588. *Veronica gentianoides* Vahl ‘Latifolia’* [Botanical Garden University of Pécs, HU, 2009].
589. *Veronica gentianoides* Vahl ‘Nana’ [Reykjavik Botanical garden, IS, 2008].
590. *Veronica incana* L. [Botanic Garden of the University of Copenhagen, DK, 2003].
591. *Veronica prostrata* L. [Experimental Station of Field Floriculture, LT, 2005].
592. *Veronica saturejoides* Vis. [The Alpine Botanical Garden “Saussurea”, Courmayeur, IT, 2005].

593. *Veronica spicata* L. 'Nana' [Experimental Station of Field Floriculture, LT, 2005].
 594. *Veronica thymoides* P. H. Davis subsp. *pseudocinerea* M. A. Fisch. [Botanical Garden University Innsbruck, AT, 2012].

SOLANACEAE Juss.

595. *Browallia americana* L. [Alexandru Borza Cluj-Napoca University Botanic Garden, RO, 2015].
 596. *Hyoscyamus niger* L. [Botanic Garden of Technical University Dresden, DE, 2015].
 597. *Jaltomata procumbens* (Cav.) J. L. Gentry [Botanic Garden of Technical University Dresden, DE, 2015].
 598. *Nicandra physaloides* (L.) Gaertn.* [Botanic Garden and Botanical Museum Berlin-Dahlem, DE, 2009].
 599. *Nicotiana mutabilis* Stehmann & Semir* [Botanic Garden of Johannes Gutenberg University Mainz, DE, 2014].
 600. *Nicotiana x sanderea* [Botanic Garden of the University of Stuttgart-Hohenheim, Stuttgart, DE, 2015].
 601. *Nicotiana suaveolens* Lehm. [Botanic Garden and Arboretum Mendel University of Agriculture and Forestry Brno, CZ, 2014].
 602. *Nicotiana tabacum* L. [The Botanical Garden of the University of Ulm, DE, 2005].

VERBENACEAE J. St.-Hill.

603. *Verbena officinalis* L. [The Botanical Garden of Krefeld, DE, 2005].

LILIOPSIDA Batsch

ALLIACEAE J. Agardh

604. *Allium aflatanense* B. Fedtsch [The Botanical Garden of the University of Tübingen, DE, 2006]
 605. *Allium aflatanense* B. Fedtsch 'Purple sensation' [The Commercial Source, LT, 2011]
 606. *Allium altaicum* Pall.* [The South-Siberian Botanical Garden, Barnaul, RU, 2009].
 607. *Allium ascalonicum* L. [Botanic Garden Regensburg, DE, 2011]
 608. *Allium christophii* Trautv. [Botanic Garden and Botanical Museum Berlin-Dahlem, DE, 2006].
 609. *Allium flavum* L.* [The Alpine Botanical Garden "Rezia", Bormio, IT, 2005].
 610. *Allium karataviense* Regel. [Traupio Botanical Garden, LT, 2001].
 611. *Allium pskemense* B. Fedtsch. [Gothenburg Botanical Garden, SE, (Uzbekistan: Ugam Mtn. Range, Urungachsay, 2555-2800 m), 2007].
 612. *Allium sarawschanicum* Regel. [Salaspils Nacional Botanical Garden, LV, 2007].
 613. *Allium stipitatum* Regel. [A. Markevičius. Private collection, Neveronys, Kaunas district, LT, 2011].
 614. *Allium suworowii* Regel [Salaspil National Botanical Garden, LV, 2007].
 615. *Allium victorialis* L. [Botanic Garden and Botanical Museum Berlin-Dahlem, DE, 2006].

ASPHODELACEAE Juss.

616. *Anthericum ramosum* L.* [Kaunas Botanic Garden of Vytautas Magnus University, LT, 2000].
 617. *Asphodelus ramosus* L.* (Walters et al., 2001) [(*Asphodelus cerasferus* J. Gay.), Botanic Garden of Nantes, FR, 2007].
 618. *Eremurus altaicus* (Pall.) Stev. [Institute of Ecology and Botany Hungarian Academy of Sciences Botanic Garden, Vacratot, HU, 2003].
 619. *Eremurus himalaicus* Bak. [Botanic Garden of the University of Stuttgart-Hohenheim, Stuttgart, DE, 2003].
 620. *Eremurus x isabellinus* Vilmorin [Botanical Garden of the University of Tartu, EE, 2006]
 621. *Paradisea liliastrum* (L.) Bertol.* [Botanical Garden of the University of Tartu, EE, 2003].

CANNACEAE Juss.

622. *Canna indica* L. [Hortus Botanicus Lovaniensis, BE, 2009].

COLCHICACEAE DC.

623. *Colchicum autumnale* L.* [Traupio Botanical Garden, LT, 2000].

CYPERACEAE Juss.

624. *Carex bohémica* Schreb.*. [Geneva City Conservatory and Botanical Gardens, CH, 2012].
 625. *Carex davalliana* Sm. [University of Salzburg Department of Organismic Biology Study Group Botanical garden, AT, 2006].
 626. *Carex distans* L.* [University of Salzburg Department of Organismic Biology Study Group Botanical Garden, AT, 2006].
 627. *Carex divulsa* Stokes [The Botanical Garden of the University of Regensburg, DE, 2011].
 628. *Carex grayii* Carey [Kaunas Botanic Garden of Vytautas Magnus University, LT, 2000].
 629. *Carex muricata* L. [Botanical Garden University of Oslo, NO, 2009].

630. *Carex otrubae* Podp.* [Institute of Botany Academy of Sciences of The Czech Republik Pruhonice, CZ, 2005].
 631. *Carex ovalis* Willd. ex Kunth [Botanic Garden of Nantes, FR, 2013].
 632. *Carex pallescens* L. [University of Salzburg Departement of organismic biology study group Botanical Garden, AT, (University of Tromso, NO), 2011].
 633. *Carex pseudocyperus* L. [Botanical garden of Ernst-Moritz-Arndt University Greifswald, DE, 2006].

DIOSCOREACEAE R. Br.

634. *Dioscorea balcanica* Kosanin [Botanical Garden of Amsterdam University, NL, 2004].

HEMEROCALLIDACEAE R. Br.

635. *Hemerocallis dumortieri* Morren* [Vilnius University Botanical Garden, LT, 2011].

HYACINTHACEAE Batsch ex Borkh.

636. *Camasia leichtlinii* (Baker) S. Wats. var. *alba* hort. [Botanical Garden of the Voroneszh State University B. M. Kozo - Poljanskii, RU, 2008].
 637. *Ornithogalum flavescens* Lam [Botanical Garden Voronezh, RU, 2009].
 638. *Ornithogalum magnum* Krasch. ET Schishkin [Botanical Garden Miunchen, DE, 2009].
 639. *Ornithogalum ponticum* Zahar [Botanical Garden Voronezh, RU, 2009].
 640. *Ornithogalum pyramidale* L. [Botanical Garden Voronezh, RU, 2009].
 641. *Scilla litardierei* Breistr. [The Munich Botanical Garden, Nymphenburg, DE, 2006].

IRIDACEAE Juss.

642. *Belamcanda chinensis* (L.) DC. [Botanical Garden Wageningen University, NL, 2004].
 643. *Gladiolus caucasicus* Herb. [Botanical Garden of the University of Potsdam, DE, 2010].
 644. *Gladiolus illyricus* W. Koch [Botanic Garden and Arboretum Mendel University of Agriculture and Forestry Brno, CZ, 2010].
 645. *Iris chrysographes* Dykes [The Alpine Botanical Garden “Viotte”, Trento, IT, 2003].
 646. *Iris spuria* L.* [Botanic Garden and Arboretum Mendel University of Agriculture and forestry Brno, CZ, (Slovakia: Kamenin), 2005].
 647. *Iris spuria* ssp. *musulmanica* (Fomin.) Takht.* [The Botanical Garden University of Oslas, NO, 2005].
 648. *Iris missouriensis* Nutt. [The Alpine Botanical Garden “Viotte”, Trento, IT, 2003].
 649. *Iris prismatica* Pursh* [The Ecological-Botanical Garden of the University of Bayreuth, DE, 2004].
 650. *Iris spuria* L.* [Botanic Garden and Arboretum Mendel University of Agriculture and Forestry Brno, CZ, 2005].
 651. *Iris tenax* Douglas ex Lindl. [The Botanical Garden of the University of Regensburg, DE, 2004].
 652. *Olsynium douglasii* (A. Dietr.) E. P. Bicknell [Botanical Garden University of Oslo, NO, 2005].
 653. *Sisyrinchium angustifolium* Mill. [The Botanical Garden of the University of Tübingen, DE, 2002].
 654. *Sisyrinchium bellum* S. Watson ‘Album’ [Tallinn Botanic Garden, EE, 2011].
 655. *Sisyrinchium bermudiana* L. [University of Bristol Botanic Garden, UK, 2004].
 656. *Sisyrinchium septentrionale* Bicknell [Botanical Garden-Institute Vladivostok, RU, 2005].

IXIOLIRIACEAE (Pax) Nakai

657. *Ixiolirion tataricum* (Pall.) Herb. [Salaspils National Botanical Garden, LV, 2004].

JUNCACEAE Juss.

658. *Luzula alpinopilosa* (Chaix) Breistr. [Botanical Garden of the University of Potsdam, DE, 2013].
 659. *Luzula luzuloides* (Lam.) Dandy et Willmott [Kaunas Botanic Garden of Vytautas Magnus University, LT, 2000].
 660. *Luzula multiflora* (Ehrh.) Lej. [Botanical Garden of Dijon, FR, 2012].
 661. *Luzula nivea* (Nathh.) DC. [Humboldt University of Berlin, Institute of Biology, Arboretum, DE, 2009].

LILIACEAE Juss.

662. *Fritillaria bucharica* Regel [Salaspils National Botanical Garden, LV, 2004].
 663. *Fritillaria imperialis* L. [Botanic Garden of Šauliai University, LT, No data available of their origin].
 664. *Fritillaria pallidiflora* Schrenk [Salaspils National Botanical Garden, LV, 2003].
 665. *Fritillaria pontica* Wahlenb. [Prague Botanical Garden, CZ, 2009].
 666. *Fritillaria roylei* J. D. Hook. [Botanical Garden University of Oslo, NO, 2003].
 667. *Fritillaria sewerzowii* Regel [Salaspils National Botanical Garden, LV, 2003].
 668. *Lilium davidi* var. *wilmotiae* (E.H. Wilson) Raffill [The Botanic Garden of the Georg-August-University, Goettingen, DE, 2007].
 669. *Lilium martagon* L. [Botanical Garden of the University of Tartu, EE, 2006].

MELANTHIACEAE Batsch

- 670. *Veratrum formosanum* O. Loes. [Botanic Garden of Šiauliai University, LT. No data available of their origin].
- 671. *Veratrum nigrum* L. [National Botanic Garden of Belgium, Meise, BE, 2003].

POACEAE (R. Br.) Bernhart

- 672. *Briza media* L. [Leuven Botanic Garden, BE, 2009].
- 673. *Chloris barbata* Sw. [Botanic Garden of Johannes Gutenberg University Mainz, DE, 2012].
- 674. *Deschampsia tzevelevii* Prob. [Botanical Garden-Institute Vladivostok, RU, 2004].
- 675. *Festuca amethystine* L. [G. Pociūlienė. Private collection, LT, 2012].
- 676. *Festuca gigantea* (L.) Vill.* [The Botanical Garden of Graz, Institute for Plant Science, Karl-Franzens-University Graz, AT, 2013].
- 677. *Hierochloe odorata* (L.) P. Beauv. [Institute of Horticulture, Lithuanian Research Centre for Agriculture and Forestry, Babtai, Kaunas district, LT, 2001].
- 678. *Lagurus ovatus* L. [Botanical Garden of the Christian Albrechts University of Kiel, DE, 2015].
- 679. *Lagurus ovatus* ssp. *ovatus* [Botanic Garden of Nantes, FR, 2015].
- 680. *Melica ciliata* L.* [The local area Anykščiai district, LT, 2001].
- 681. *Molinia caerulea* (L.) Moench. [K. Vysniauskas. Private collection, Raseiniai, LT, 2004].
- 682. *Setaria italica* (L.) P. Beauv. ‘Maxima’* [The Ecological-Botanical Garden of the University of Bayreuth, DE, 2012].
- 683. *Setaria italica* var. *brevisetata* (Doell.) Hyl. ‘Coccinea’* [The Ecological-Botanical Garden of the University of Bayreuth, DE, 2012].
- 684. *Setaria macrostachya* Kunth* [The South-Siberian Botanical Garden, Barnaul, RU, 2009].
- 685. *Stipa dasyphylla* (Lindem.) Trautv.* [Botanical Garden, AV Fomina Kyiv National Taras Shevchenko University, UA, 2004].
- 686. *Stipa pennata* L. [Vilnius University Botanical Garden, LT, 2002].
- 687. *Stipa zalesskii* Wilensky [Botanical Garden of the Ukrainian Academy of Science, Kiev, UA, 2004].
- 688. *Zea mays* L. ‘Black Aztek’ [The Botanischer Garten Krefeld, DE, 2015].
- 689. *Zea mays* L. ‘White Cherokee’ [Botanical Garden of the University of Zurich, CH, 2015].

SEED FROM LITHUANIAN PLANTS CULTIVATED IN THE GARDEN

APIACEAE Lindl.

- 690. *Angelica archangelica* L.* [The local area Joniškis district, LT, 2012].
- 691. *Astrantia major* L. [The local area Žagarė, Joniškis district, LT, 2000].
- 692. *Laserpitium latifolium* L. [The local area Mažeikiai district, LT, 2007].

ASTERACEAE Dumort.

- 693. *Gnaphalium luteoalbum* L. [The local area Merkinė, Varėna district, LT, 2008].

BORAGINACEAE Juss.

- 694. *Lithospermum officinale* L. [Traupis botanical garden, LT, 1999].

BRASSICACEAE Burnett

- 695. *Lunaria rediviva* L. [The local area Varėna district, LT, 2000].

CAMPANULACEAE Juss.

- 696. *Campanula bononiensis* L. [The local area Kėdainiai district, LT, 2007].
- 697. *Campanula cervicaria* L.* [The local area Paryžė, Kupiškis district, LT, 2007].

CARYOPHYLLACEAE Juss.

- 698. *Dianthus arenarius* L. [The local area Marcinkonys, Varėna district, LT, 2008].
- 699. *Dianthus arenarius* ssp. *arenarius** [The local area Perloja, Varėna district, LT, 2007].
- 700. *Dianthus borbasii* Vandas [The local area Dzūkija National Park, Varėna district, LT, 2003].
- 701. *Silene lithuanica* Zapal. [The local area Marcinkonys, Varėna district, LT, 2008].
- 702. *Silene tatarica* (L.) Pers.* [The local area Liškiava, Varėna district, LT, 2008].

DIPSACACEAE Juss.

- 703. *Scabiosa columbaria* L. [The local area Vilnius district, LT, 2007].
- 704. *Succisella inflexa* Kluk [The local area Kupiškis district, LT, 2010].

ERICACEAE Juss.

- 705. *Ledum palustre* L.* [A. Malciūtė. Vainagiai hillfort, Kurtuvėnai Regional Park, LT, 2005].
- 706. *Pyrola rotundifolia* L.* [Collector K. K. Vilkonis. Mūša tyrelis telmological reserves, Žagarė, Joniškis district, LT, 2005].

FABACEAE Lindl.

- 707. *Astragalus glycyphyllos* L. [The local area Šiauliai, Aleksandrija district, LT, 2012].
- 708. *Lathyrus sylvestris* L. [The local area Radviliškis district, LT, 2000].
- 709. *Ornithopus perpusillus* L. [The local area Pociūnai, Prienai district, LT, 2000].
- 710. *Vicia lathyroides* L.* [The local area Nemirseta, Klaipėda district, LT, 2007].

GENTIANACEAE Juss.

- 711. *Gentiana cruciata* L. [The local area Lazdijai district, LT, 2005].

HYPERICACEAE Juss.

- 712. *Hypericum hirsutum* L.* [The local area Satkūnai, Joniškis district, LT, 2007].
- 713. *Hypericum orientale* L. [Vilnius University Botanical Garden, LT, 2007].

LAMIACEAE Lindl.

- 714. *Dracocephalum ruyschiana* L. [The local area Anykščiai district, LT, 2008].
- 715. *Mentha longifolia* (L.) Huds.* [The local area Pupiniai, Kupiškis district, LT, 2007].
- 716. *Salvia pratensis* L.* [The local area Merkinė, Lazdijai district, LT, 1999].
- 717. *Salvia stepposa* Desj.-Schost. [The local area Kupiškis district, LT, 2004].
- 718. *Salvia x sylvestris* L.* [The local area Vizgūnai, Kupiškis district, LT, 2009].
- 719. *Scutellaria hastifolia* L. [The local area Gazdonai, Šilutės district, LT, 1998].
- 720. *Stachys recta* L. [The local area Kaišiadorys district, LT, 2002].

MELANTHIACEAE Batsch.

721. *Tofieldia calyculata* (L.) Wachlenb.* [The local area Lazdijai district, LT, 2001].

POLYGONACEAE Juss.

722. *Fagopyrum tataricum* (L.) Gaertn. [The local area Šalčininkai district, LT, 2007].

PRIMULACEAE Vent.

723. *Androsace septentrionalis* Retz.* [The local area Šiauliai district, LT, 2005].

RANUNCULACEAE Juss.

724. *Pulsatilla patens* (L.) Mill. [The local area Varėna district, LT, 2008].

725. *Pulsatilla pratensis* (L.) Mill.* [The local area Prienai district, LT, 2000].

726. *Trollius europaeus* L.* [The local area Kurtuvėnai, Šiauliai district, LT, 2004].

ROSACEAE Juss.

727. *Aphanes arvensis* L.* [The local area Raguva, Panevėžys district, LT, 2002].

RUBIACEAE Juss.

728. *Cruciata glabra* (L.) Ehrend. [The local area Romainiai, Kaunas district, LT, 2000].

729. *Sherardia arvensis* L.* [The local area Prienai district, LT, 2001].

VIOLACEAE Batsch

730. *Viola elatior* Fr. [The local area Vilnius district, LT, 2007].

LILIOPSIDA Batsch

ALLIACEAE J. Agardh

731. *Allium angulosum* L. [The local area Tauragė district, LT, 2007].

732. *Allium scorodoprasum* L. [The local area Priekulė, Klaipėda district, LT, 2007].

ASPHODELACEAE Juss.

733. *Anthericum ramosum* L.* [Kurtuvėnai Regional Park, Šiauliai district, LT, 2000].

IRIDACEAE Juss.

734. *Gladiolus imbricatus* L. [The local area Širvintai district, LT, 2007].

735. *Iris sibirica* L. [The local area Truskava, Kėdainiai district, LT, 2008].

LILIACEAE Juss.

736. *Lilium martagon* L. [The local area Varėna district, LT, 2013].

ORCHIDACEAE Juss.

737. *Dactylorhiza fuchsii* (Druce) Soo' [The local area Kupiškis district, LT, 2008].

738. *Dactylorhiza longifolia* (Neum) Aver [The local area Švendrės forest, Šiauliai district, LT, 2007].

POACEAE (R. Br.) Bernhart

739. *Aira praecox* L. [The local area Nemirseta, Klaipėda district, LT, 2000].

740. *Festuca psammophila* (Hack. ex Celak.) Fritch. [The local area Varėna district, LT, 2008].

741. *Sesleria caerulea* (L.) Ard. [The local area Gudmonišķė, Kelmė district, LT, 2005].

REFERENCES

1. Brummitt R. K., 1992: Vascular plant families and genera. – Royal Botanic Gardens, Kew.
2. Cullen J., 2005: Hardy Rhododendron Species: a guide to identification. – Royal Botanic Garden Edinburgh.
3. Cullen J., Alexander J. C. M., Brady A., Brickell C. D., Green P. S., Heywood V. H., Jørgensen P. - M., Jury S. L., Knees S. G., Leslie A. C., Matthews V. A., Robson N. K. B., Walters S. M., Webb D. A., Wijnands D. O., Yeo P. F., 2002: The European garden flora, 4. – Cambridge.
4. Cullen J., Alexander J. C. M., Brickell C. D., Edmondson J. R., Green P. S., Heywood V. H., Jørgensen P. - M., Jury S. L., Knees S. G., Matthews V. A., Maxwell H. S., Miller D. M., Nelson E. C., Robson N. K. B., Walters S. M., Yeo P. F., 1997: The European garden flora, 5. – Cambridge.
5. Cullen J., Alexander J. C. M., Brickell C. D., Edmondson J. R., Green P. S., Heywood V. H., Jørgensen P. - M., Jury S. L., Knees S. G., Matthews V. A., Maxwell H. S., Miller D. M., Robson N. K. B., Walters S. M., Yeo P. F., 2000: The European garden flora, 6. – Cambridge.
6. Czerepanov S. K., 1995: Vascular plants of Russia and adjacent states. – Cambridge.
7. Grey-Wilson C., Cribb P., 2011: Guide to the flowers of western China. – Royal Botanic Gardens, Kew.
8. Gudžinskas Z., 1999: Lietuvos induočiai augalai [Vascular plants of Lithuania]. – Vilnius.
9. Jankevičienė R., 1998: Botanikos vardų žodynas [Dictionary of plant names]. – Vilnius.
10. Lammers T. G., 2007: Campanulaceae. – Royal Botanic Gardens Kew.
11. Navasaitis M., 2004: Dendrologija. – Vilnius.
12. Takhtajan A., 2009: Flowering plants. – Springer.
13. Vojtěch Holubec, Pavel Křivka, 2006: The Caucasus and its flowers. – LOXIA.
14. Walters S. M., Alexander J. C. M., Brady A., Brickell C. D., Cullen J., Green P. S., Heywood V. H., Matthews V. A., Robson N. K. B., Yeo P. F., Knees S. G., 2004: The European garden flora, 3. – Cambridge.
15. Walters S. M., Brady A., Brickell C. D., Cullen J., Green P. S., Lewis J., Matthews V. A., Webb D. A., Yeo P. F., Alexander J. C. M., 2002: The European garden flora, 1. – Cambridge.
16. Walters S. M., Brady A., Brickell C. D., Cullen J., Green P. S., Lewis J., Matthews V. A., Webb D. A., Yeo P. F., Alexander J. C. M., 2003: The European garden flora, 2. – Cambridge.
17. <http://www.zipcodezoo.com/Plants/>
18. <http://www.ipni.org/index.html>
19. <http://www.kadel.cz/flora/kvSearch.asp.htm>
20. <http://www.pfaf.org/user/default.aspx>
21. <http://www.theplantlist.org>
22. <http://www.wildflower.org/plants/>

**AGREEMENT ON THE SUPPLY OF PLANT
MATERIAL BY BOTANIC GARDEN
OF ŠIAULIAI UNIVERSITY**

In response to the International Convention on Biological Diversity (Rio de Janeiro 1992), the Šiauliai Botanic garden supplies its seeds offered in this catalogue on the condition that:

The seeds are for the common good in the area of research, education, conservation and the development of botanic gardens.

The genetic material, its products or research derived from it are not passed to a third party for commercial purposes without permission from the Botanic Garden of Šiauliai University.

Any publication resulting from the use of the material should acknowledge the Botanic Garden of Šiauliai University as supplier.

By ordering seeds you agree to comply with the conditions above.

Botanic Garden
Šiauliai University
Vilniaus Str. 88,
LT-76285, Šiauliai,
LITHUANIA
E-mail.: [**dir@bs.su.lt**](mailto:dir@bs.su.lt)

Your order should reach us on the prepared order form before May 1, 2016. Please, limit your order to a maximum of 20 numbers.

DESIDERATA 2015

Please indicate your requests, one number in each box, and return as soon as possible.

Your address: