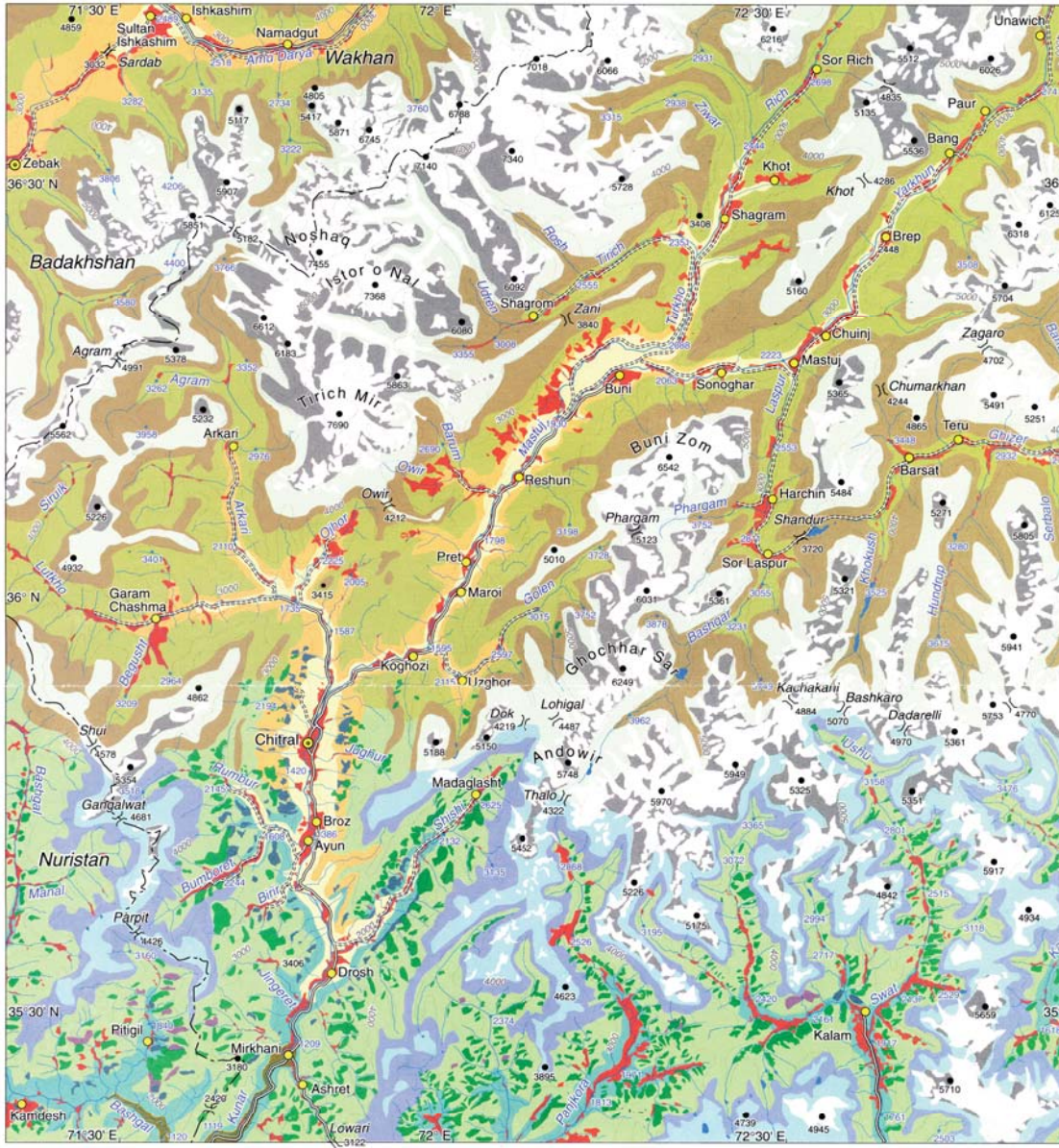


# Vegetation Map of the Eastern Hindukush (Chitral, Northern Pakistan)



**Sources:**  
 Geometrical rectified Landsat TM data (151/35), 29.8.1993, visual interpretation  
 Altitudes and topography according to Generalini Stab 1:100 000 (1974-1985)  
 Sheets: J-42-131, J-42-132, J-43-121, J-43-122, J-42-143, J-42-144, J-43-133,  
 J-43-134, I-42-11, I-42-12, I-43-1, I-43-2, I-42-23, I-42-24, I-43-13, I-43-14  
 Toponyms in Nuristan: Edelberg and Jones (1979)  
 in Badakhshan, Wakhan and Yarkun Valley: Kreutzmann (1996, 2000a)  
 Field surveys: 1995 (W.B. Dickoré, M. Nüsser); 1997 (M. Nüsser)  
 Floristic database: W.B. Dickoré, Draft and cartography: M. Nüsser

## Colline belt

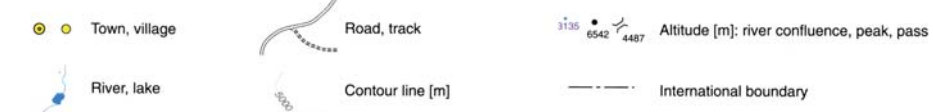
- (1.1) Subhumid scrub  
*(Dodonaea viscosa, Monotheca buxifolia, Quercus incana, Zizyphus jujuba)*
- (1.2) Arid desert scrub  
*(Artemisia fragrans, Pistacia khinjuk, Pulicaria salviaefolia;*  
*in Chitral and Wakhan: Haloxylon griffithii, Haplophyllum dubium;*  
*Indus basin: Haloxylon thomsonii, Haplophyllum gilesii)*

## Submontane belt

- (2.1) Subhumid sclerophyllous oak forest  
*(Quercus baloot, Piptatherum vicarium, Tricholaser ovalitolum, Viburnum cotinifolium)*
- (2.2) Semiarid steppe pine forest  
*(Pinus gerardiana, Acantholimon kokandense, Astragalus erionotus, Onosma dichroanthum)*
- (2.3) Semiarid steppe, deciduous and juniper steppe-forest groves  
*(Artemisia persica, Fraxinus xanthoxyloides, Prunus kuramica, Juniperus excelsa subsp. polycarpus)*

## Montane belt

- (3.1) Humid mixed deciduous and laurophyllous oak forest  
*(Quercus dilatata, Quercus semecarpifolia, Acer cappadocicum, Aesculus indica)*
- (3.2) Humid coniferous forest  
*(Cedrus deodara, Pinus wallichiana, Picea smithiana, Abies pindrow, Podophyllum hexandrum, Pseudomertensia parviflora)*
- (3.3) Subhumid meadow steppe and scrub  
*(Artemisia brevifolia, Cotoneaster nummulana, Pseudosedum lievenii, Solenanthus circinnatus)*
- (3.4) Semiarid to arid steppe and scrub  
*(Arenaria griffithii, Draba olgae, Juniperus semiglobosa, Krascheninnikovia ceratoides, Prangos pabularia)*



## Subalpine belt

- (4.1) Humid treeline forest, scrub, dwarf-scrub and meadow  
*(Betula utilis subsp. jacquemontii, Berberis parkeriana, Juniperus squamata, Salix denticulata)*
- (4.2) Semiarid scrub, thorn-cushion dwarf-scrub and steppe  
*(Acantholimon lycopodioides, Carex stenophylla, Hedysarum minjanense, Nepeta paulsenii, Saussurea gilesii)*

## Alpine belt

- (5.1) Humid turf, dwarf-scrub and desert  
*(Kobresia capillifolia, Myosotis asiatica, Poa alpina, Sibbaldia cuneata, Salix karelinii)*
- (5.2) Subhumid to arid steppe, dwarf-scrub and desert  
*(Astragalus webbianus, Draba korshinskyi, Kobresia karakorumensis, Lonicera semenovii, Smelowskia calycina)*

## Subnival belt

- (6) Scree and rock desert  
*(Christolea flabellata, Lagotis globosa, Psychrogeton olgae, Saussurea gnaphalodes, Waldheimia tomentosa)*

## Nival belt

□ Permanent ice and snow, high rock faces

## Cultivated areas

- (7) Cultivated fields, meadows, orchards and tree plantations predominantly irrigated

