

Xanthoria parietina



Dolichocarpus seawardii



500 years old *Ramalina rigidella*

18. The Haystack. Vertical basalt cliffs and slope with boulders and soil crusts. $15^{\circ}54.880'S$, $5^{\circ}39.829'W$ (Astro DOS 71/4) alt. 600 m.



19. Hutts Gate, along road. Trees and road walls. $15^{\circ}57.353'S$, $5^{\circ}42.246'W$ (Astro DOS 71/4) alt. 650 m.



yellow: *Pseudocyphellaria aurata*



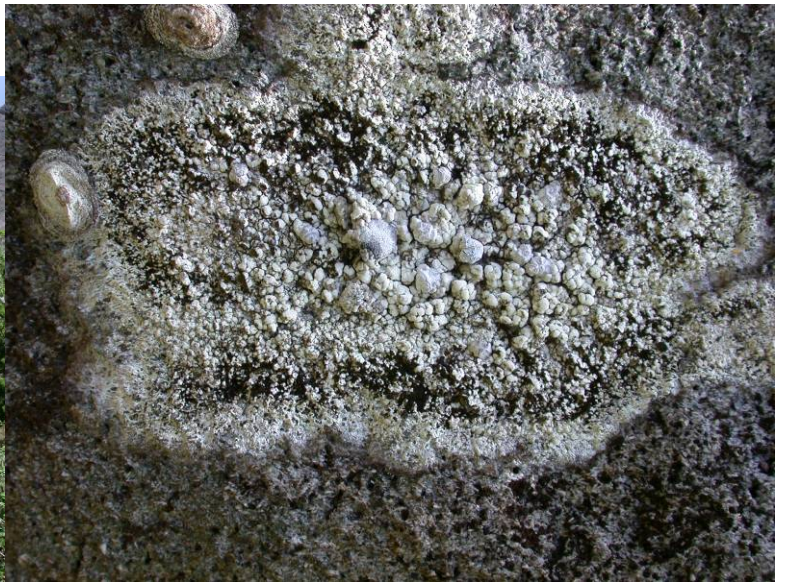
green: *Psilolechia lucida*; yellow: *Teloschistes flavicans*



Usneas

20. High Peak. Basalt cliff with trees. 15°58.495'S, 5°44.371'W(Astro DOS 71/4) alt. 700-750 m.

21. Peak Dale, near Old Luffkins. Slope with large basalt boulders and trees. 15°59.422'S, 5°44.719'W(Astro DOS 71/4) alt. 600-700 m.



Syncesia effusa with *Taeniolella* fungus parasite

22. Diana's Peak. Slope with tree ferns and basalt cliff. 15°57.7'S, 5°42.4'W(Astro DOS 71/4) alt. 800 m.



23. S of Boxwood Hill. Slope with trees. 15°58.6'S, 5°40.2'W(Astro DOS 71/4) alt. 375 m.

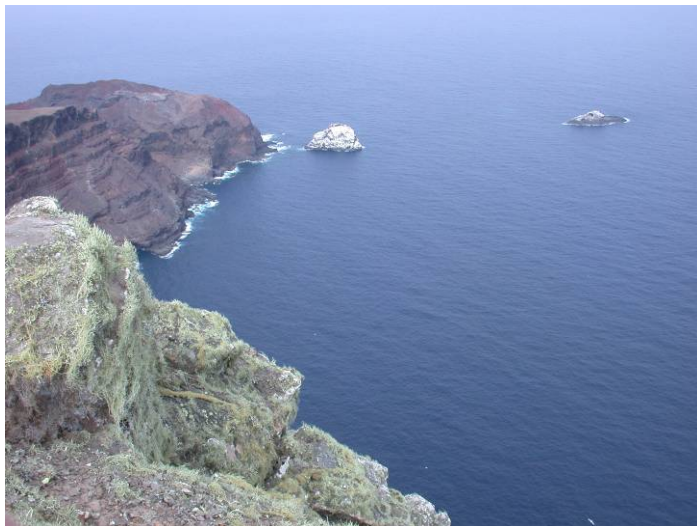
24. S. of Little Stone Top. Slope with large basalt boulders and soil crusts. 15°58.507'S, 5°40.038'W(Astro DOS 71/4) alt. 375 m.



yellow: *Candelaria concolor*; white: *Lecanora sanctae-helenae*

Dolichocarpus seawardii

25. Great Stone Top. Slope with basalt boulders and soil crusts and vertical basalt cliff. 15°58.530'S, 5°39.672'W(Astro DOS 71/4) alt. 400-480 m.



yellow: *Usnea exasperata*

Additional localities, not studied in detail (also by A. Aptroot in Oct. 2006)

26. Fisher's Valley, near waterfall. Vertical basalt cliff. 15°57.007'S, 5°39.495'W(Astro DOS 71/4) alt. 300 m.
27. Longwood, near church. Roadside trees. 15°56.695'S, 5°41.380'W(Astro DOS 71/4) alt. 490 m.
28. Mount Pleasant. Garden. 15°58.202'S, 5°43.197'W(Astro DOS 71/4) alt. 600 m.
29. High Knoll Fort. On fortress walls. 15°56.370'S, 5°43.288'W(Astro DOS 71/4) alt. 600 m.



Ramalina rigidella

30. St Paul's Cathedral. Churchyard. 15°57.096'S, 5°43.460'W(Astro DOS 71/4) alt. 600 m.

Study sites on Ascension Island, studied for lichens by A. Aptroot in Oct. 2006

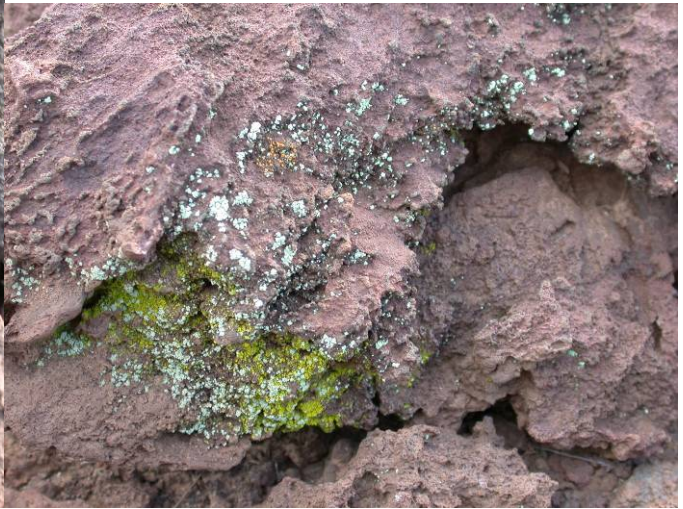
31. Georgetown, Longbeach, coastal lava field. 7°55.4'S, 14°24.3'W alt. 5 m.



32. S. of Georgetown near crossroads. Lava field. 7°56.413'S, 14°24.660'W alt. 30 m.



Dirinaria flava



yellow: *Chrysothrix xanthina*; green: *Lepraria usnica*

33. W. of Two Boat Village. Lava field on slope with large basalt boulders and soil crusts. 7°56.181'S, 14°22.520'W alt. 175 m.





Roccella allorgei

34. E. slope of Sisters Peak. Lava field on slope with large basalt boulders and soil crusts. 7°55.977'S, 14°21.971'W alt. 275 m.



35.
alt. 300 m.

Lady Hill. Lava field on slope with large basalt boulders and soil crusts. 7°56.637'S, 14°22.880'W



Roccella allorgei



Teloschistes flavicans

36. Top of Sisters Peak. Lava field on slope with large basalt boulders, shrubs and soil crusts. 7°55.580'S, 14°22.311'W alt. 350-450 m.

37. Green Mountain, around Cottage. Forest with basalt cliffs and soil crusts. 7°57.5'S, 14°21'W alt. 750-800 m.

38. Cricket Valley. Basalt cliffs with trees and soil crusts. 7°56.859'S, 14°19.581'W alt. 400 m.



Lecanora sanctae-helenae



Lecanographa farinulenta



Xanthoparmelia subramigera

Study site in Namibia, studied for lichens by A. Aptroot in Oct. 2006

39. Halfway Swakopmund and Walvis Bay along old Windhoek road near begin of Welwitschia Drive.
22°40'S, 14°40'E alt. 50 m.



Xanthomaculina hottentotta, *X. convoluta*, *Caloplaca namibensis*