

# Botanical Building and Gardens Phase 2 Concept Design

March 21, 2024



S P U R L O C K

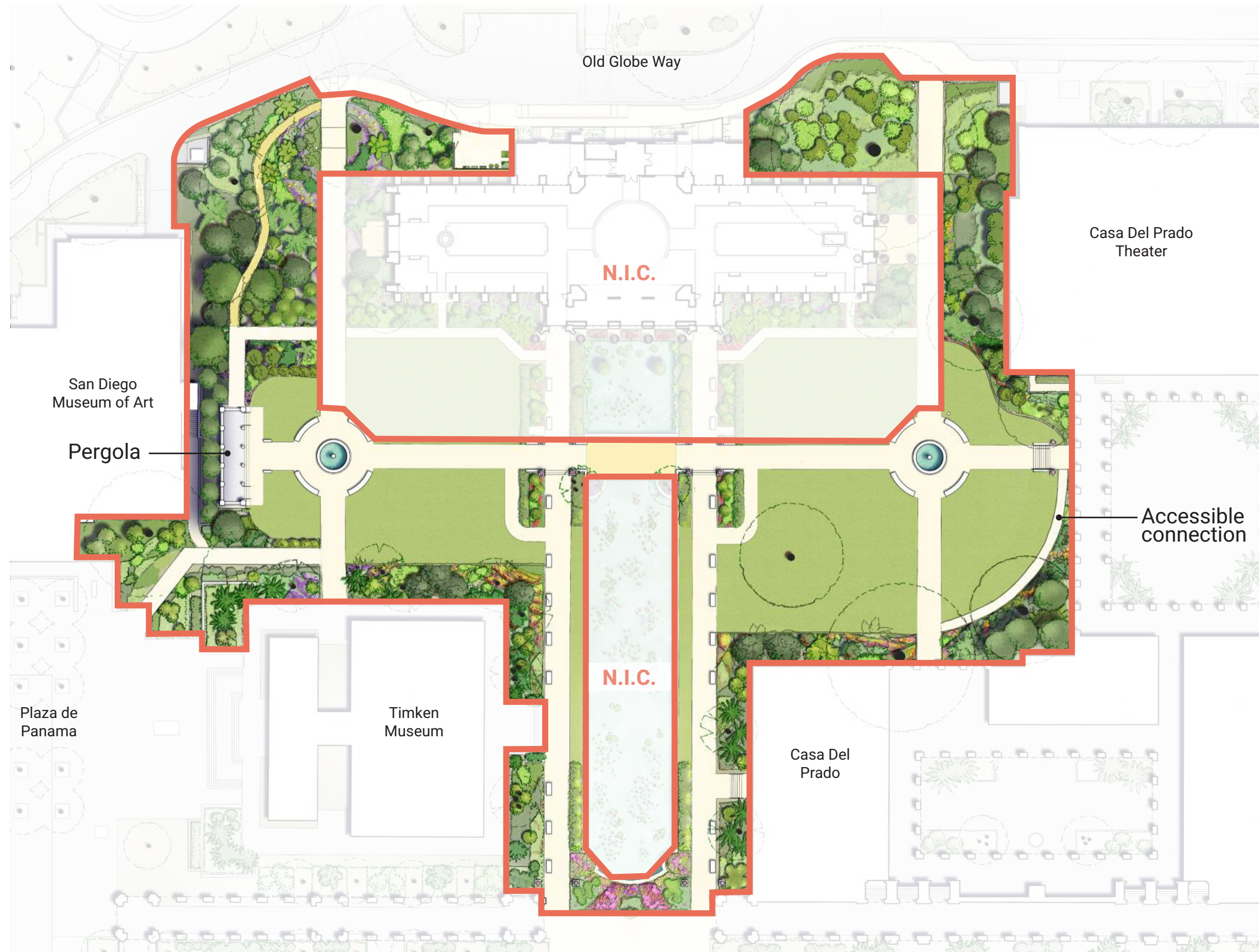
 FOREVER  
BALBOA PARK

The City of  
**SAN DIEGO**

# Project Goals

- Revitalize an **iconic destination** in Balboa Park
- Celebrate Balboa Park's **cultural and recreational riches**
- Develop a memorable **series of garden stories**
- Create a **harmonious connection** between interior and exterior
- Showcase **seasonality, horticultural diversity and sustainability**
- Align with Parks and Recreation **standards** and the 1992 **Central Mesa Precise Plan**

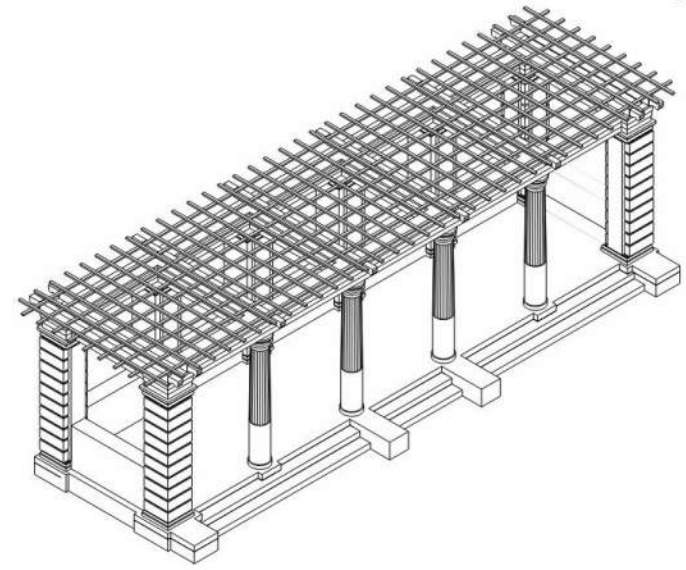
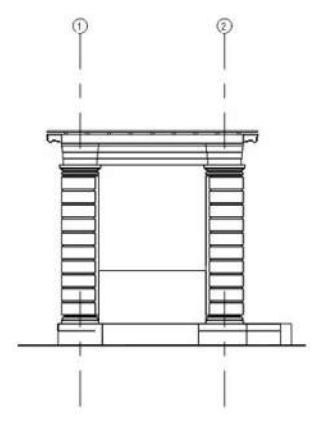
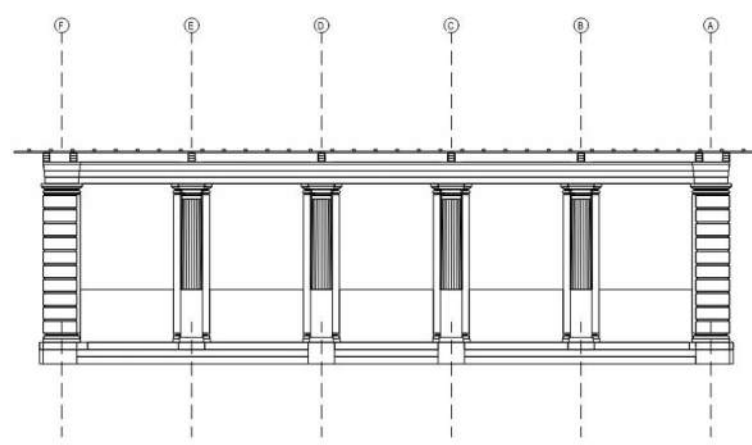
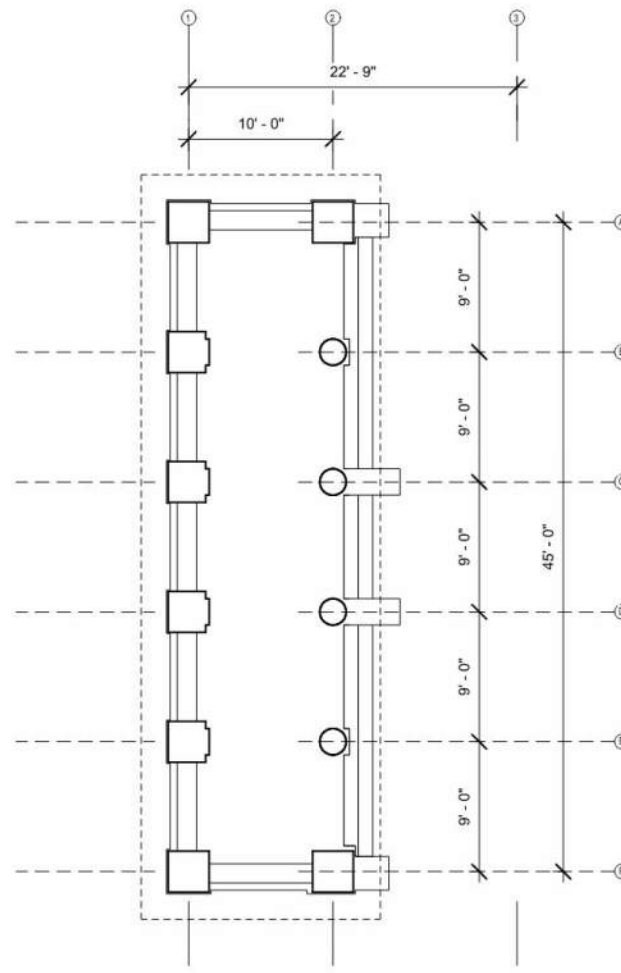
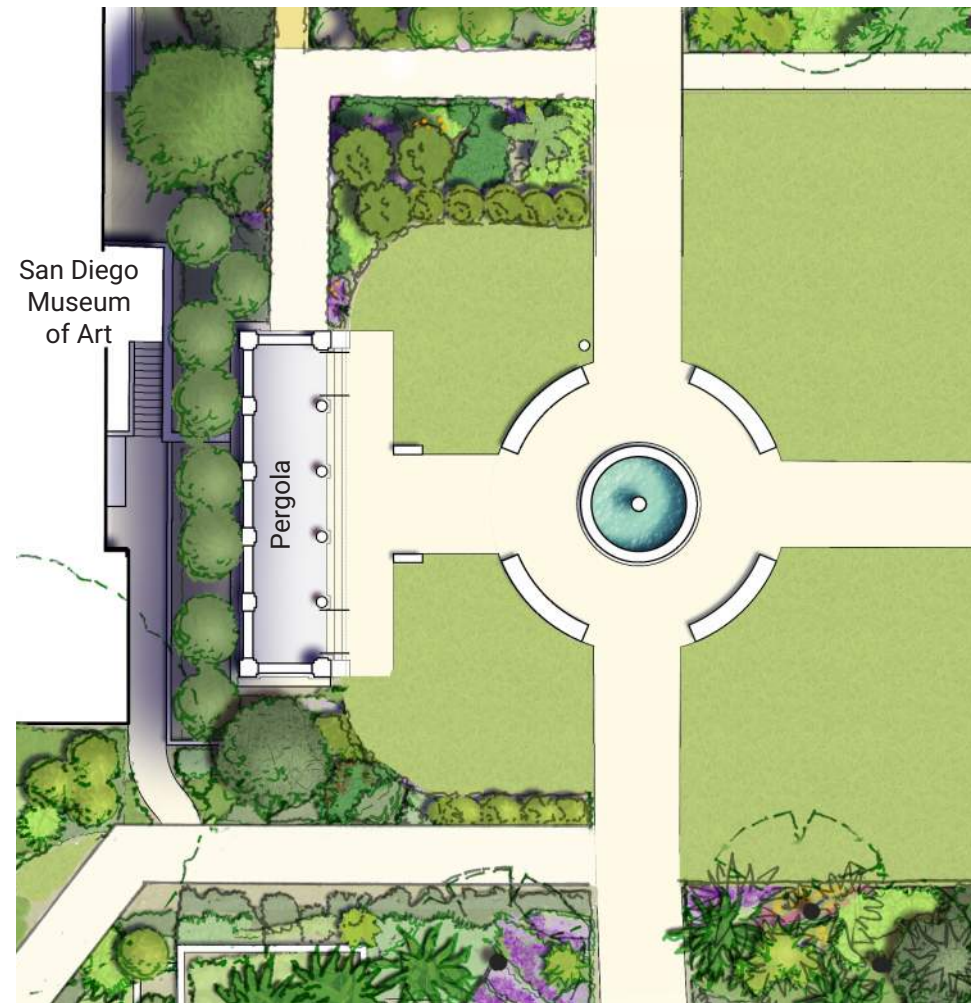
# Botanical Building Gardens - Phase 2 Scope of Work



## Scope of Work

- Reconstruct historic pergola
- Improve accessibility
- Refresh planting and irrigation
- Restore fountains, urns and balustrades
- Improve exterior lighting

# Botanical Building Gardens - Reconstructed Pergola

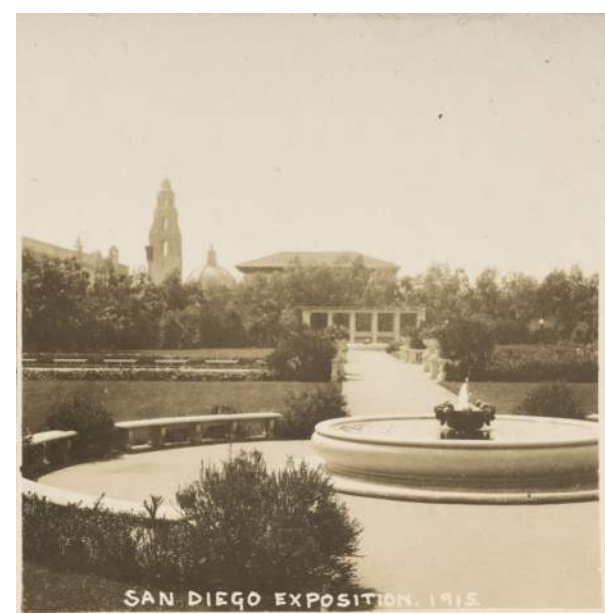


FLOOR PLAN



ISOMETRIC

PROPOSED PERGOLA



# Site Observations

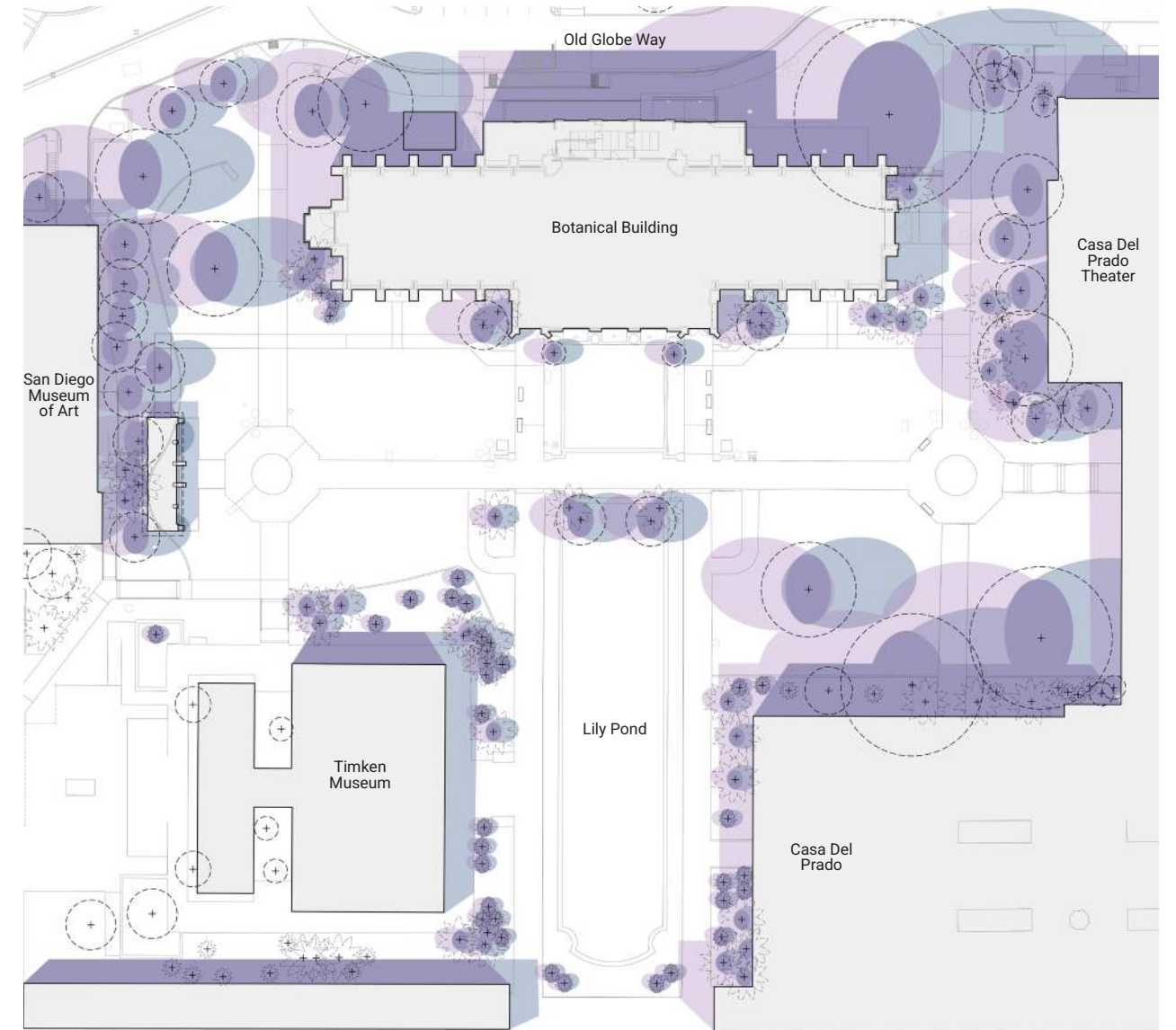
## Trees



### Legend

- ★ Significant Tree (1992 Central Mesa Precise Plan)
- ⊕ Coniferous Evergreen
- ⊕ Canopy
- ⊕ Tropical/Succulent Tree
- 🌴 Palm
- ⊕ Tree out of Scope

## Shade

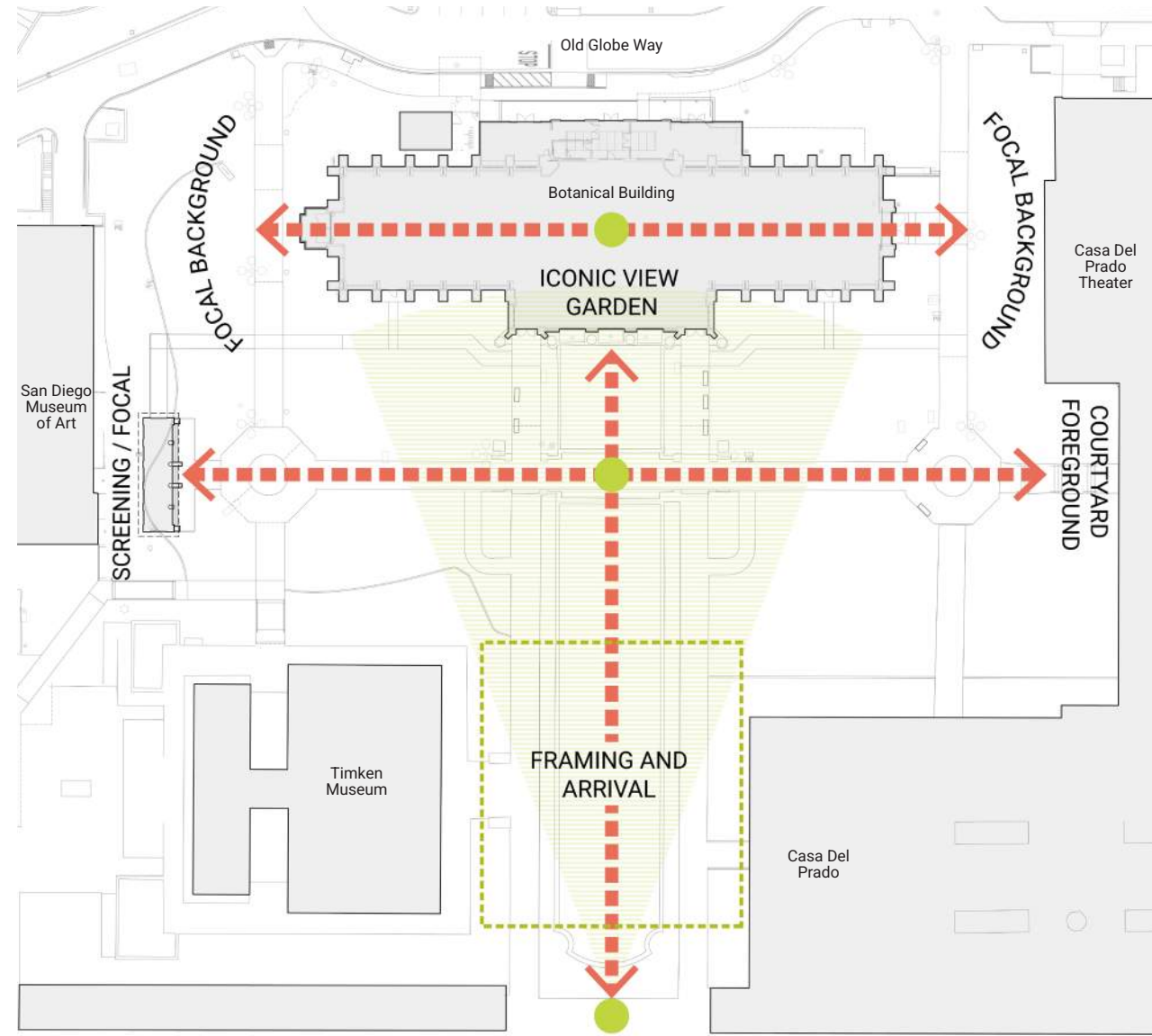


### Legend

- ☐ Morning Shade
- ☐ Afternoon Shade
- ☐ Full Shade

# Site Opportunities

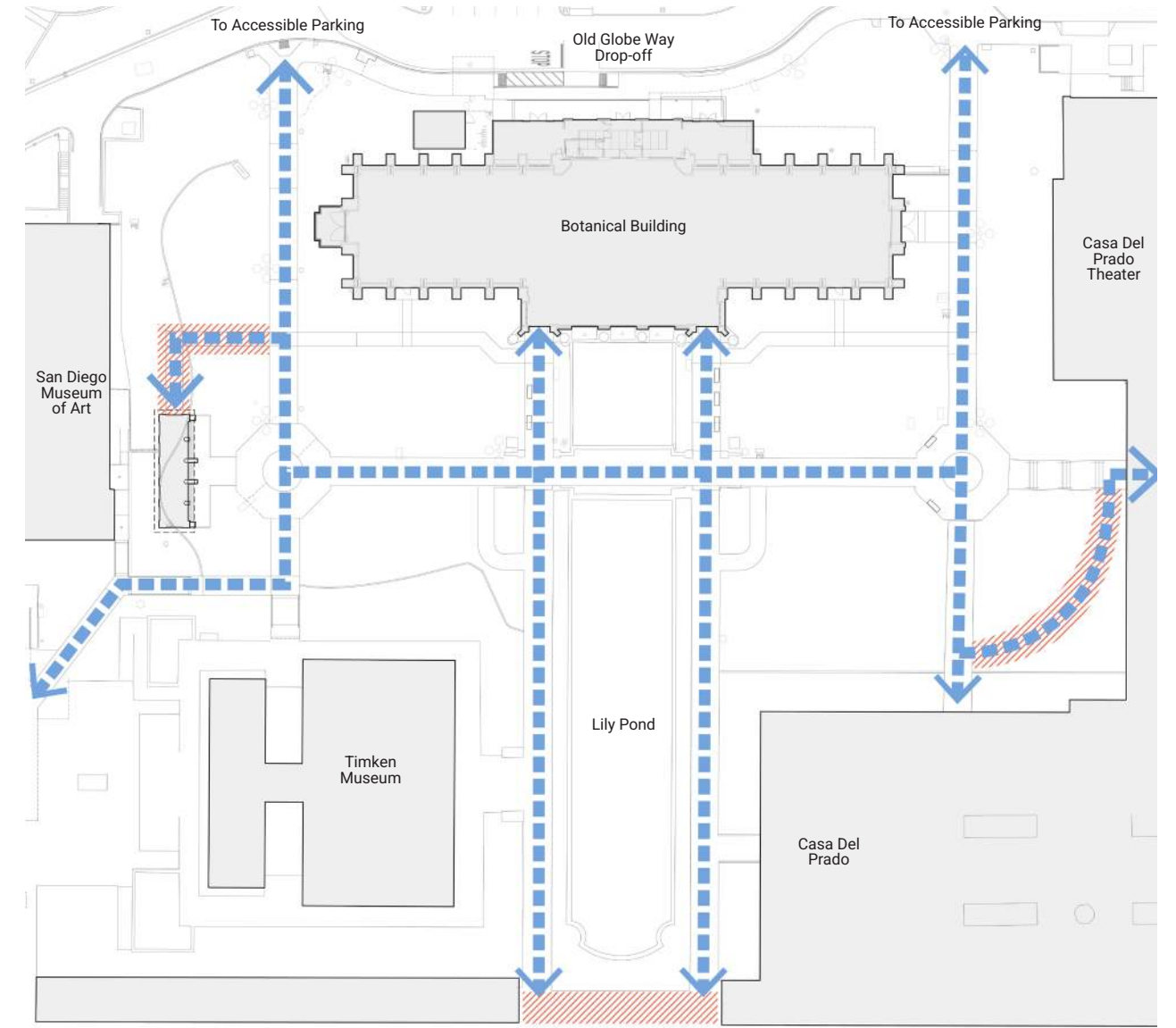
## Views





### Legend

-  Iconic View
-  Views
-  Viewpoint

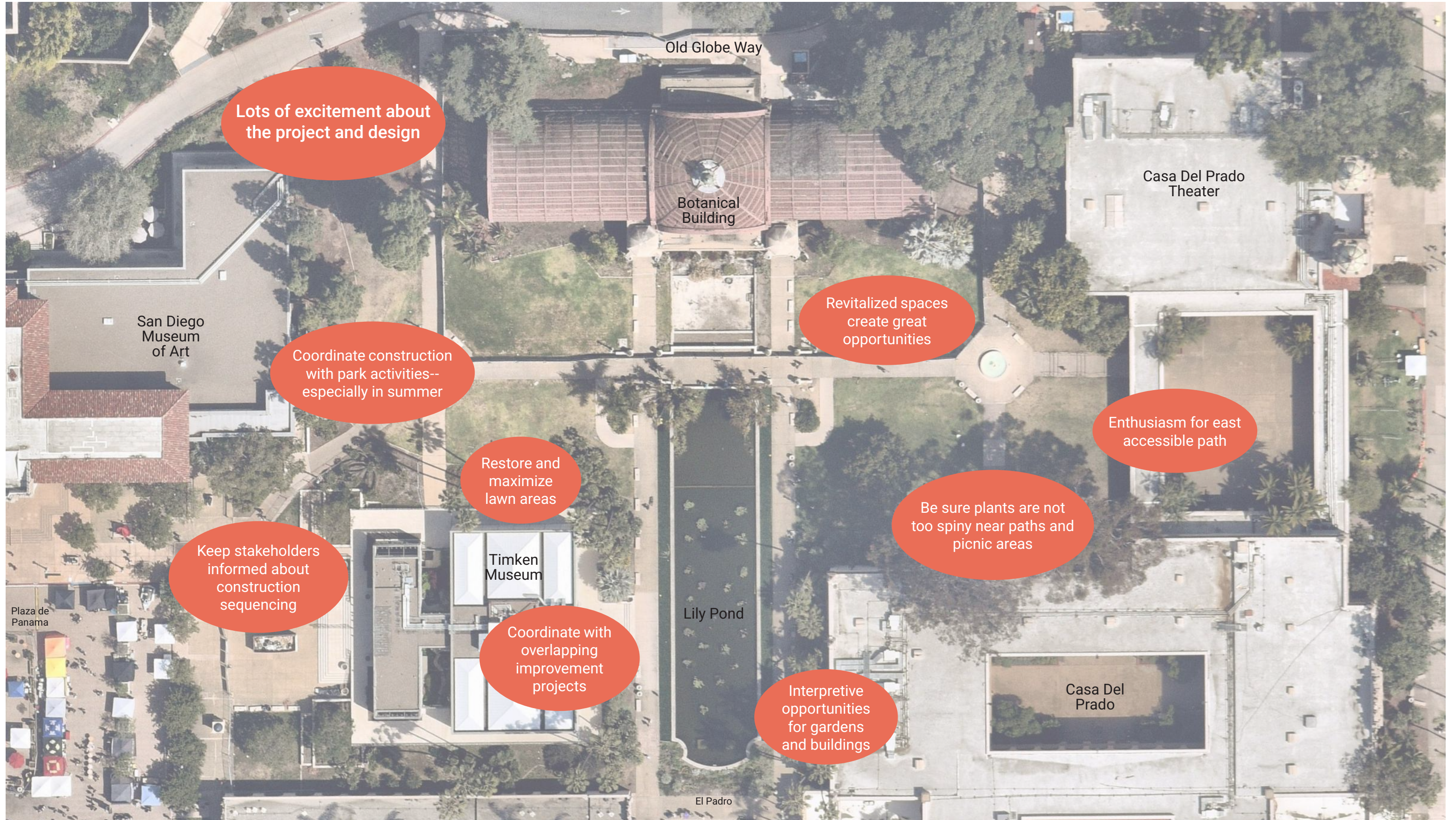
## Accessible Improvements



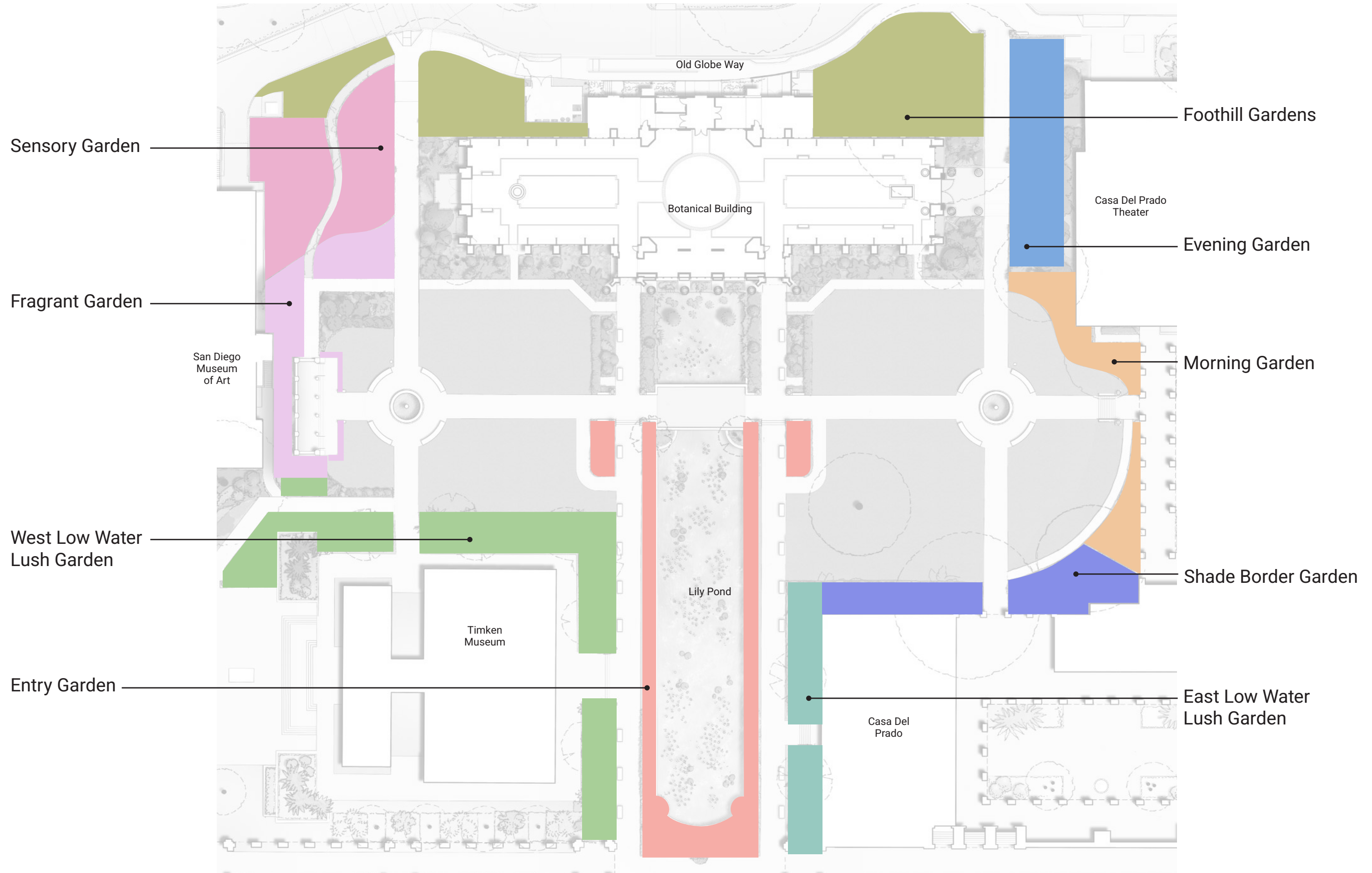
### Legend

-  Accessible Path of Travel
-  Improvements

# Stakeholder Feedback Summary

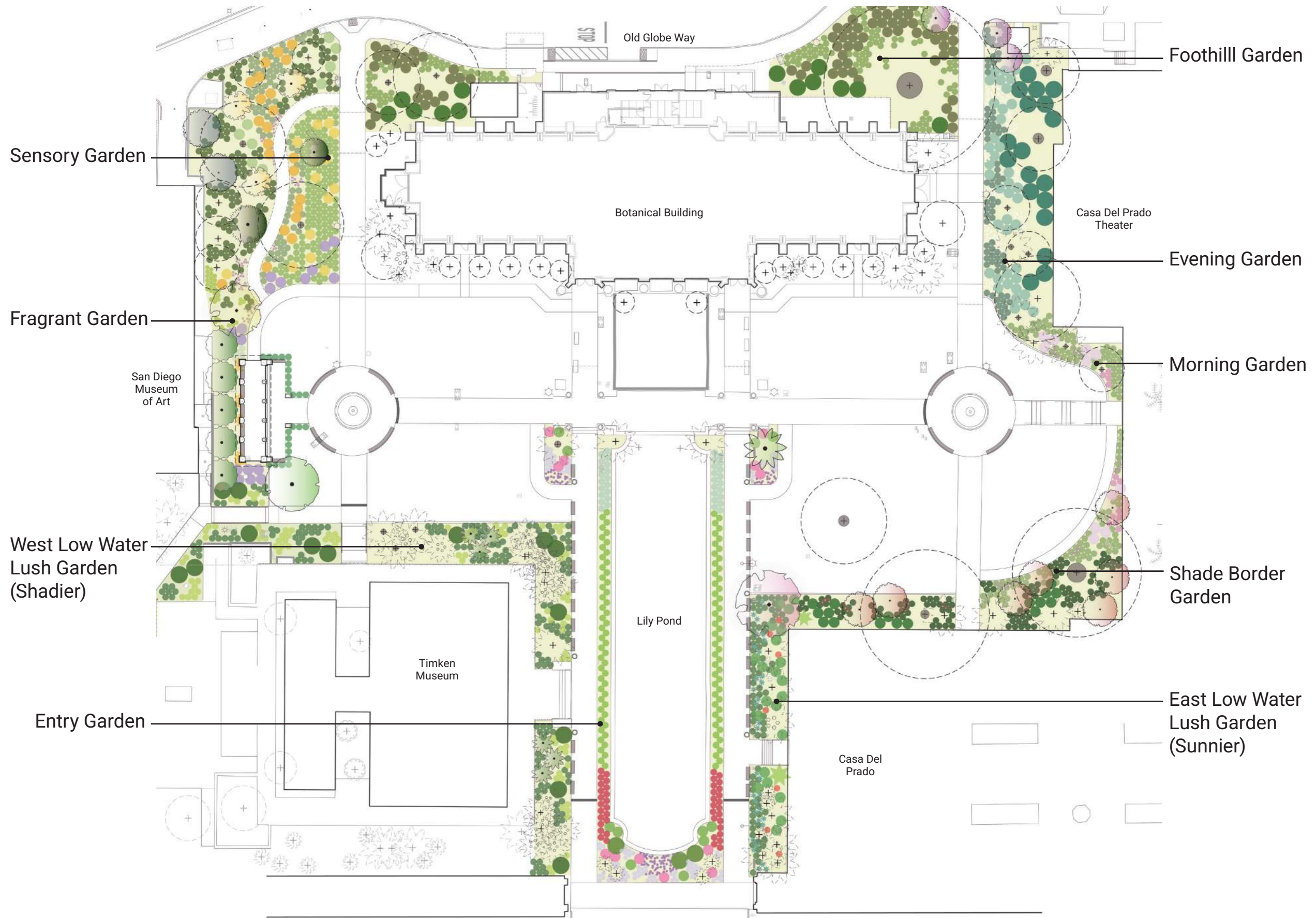


# Global Mediterranean





# Planting Framework



# Entry Garden



KEY MAP

## Character:

- Colorful
- Exuberant
- Captivating
- Color: Pinks, lime greens

## Species such as:

- Agave 'Blue Flame'
- Arctotis
- Calandrinia
- Coleonema pulchellum
- Coprosma
- Cotyledon spp.
- Crassula undulatom
- Mangave spp.
- Pediolanthus
- Sanseveria cylindrica
- Zamia acuminata

## Existing:

- Acoelorrhapha wrightii
- Roystonea regia
- Chamaerops humilis var. argentea



# West Low Water Lush Garden (Shady)



KEY MAP

## Character:

- Sculptural
- Bold contrasts
- Playful scale
- Color: Medium and lime greens, coral accents

## Species such as:

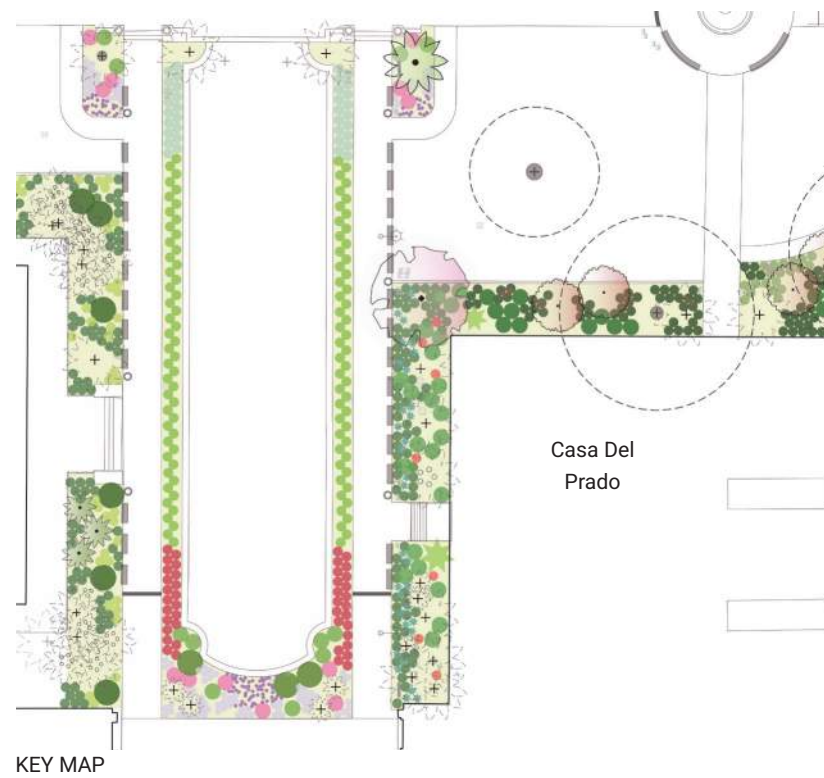
- *Agave gemniflora*
- *Aeonium* spp.
- *Aloe* spp.
- Bromeliad
- *Carex divulsa*
- *Coprosma*
- *Dioon edule*
- *Furcraea macdougallii*
- *Lomandra* 'Breeze'
- *Sanseveria*
- *Zamia acuminata*

## Existing:

- *Chamaerops humilis*
- *Bismarckia nobilis*
- *Livingstonia chinensis*



# East Low Water Lush Garden (Sunnier)



## Character:

- Sculptural
- Spherical forms
- Textural layers
- Color: Blue greens and golden accents

## Species such as:

- *Agave gemniflora*
- *Agave parryi*
- *Agave 'Blue Flame'*
- *Caesalpinia pulcherrima*
- *Crassula undulatum*
- *Dasyilirion longissima*
- *Dudleya brittonii*
- *Dyckia*
- *Euphorbia ingens*
- *Euphorbia resinifera*
- *Juniperus 'Blue Pacific'*
- *Nolina nelsonii*
- *Puya minima*
- *Senecio* spp.
- *Yucca rostrata*
- *Xanthorrhoea preisii*

## Existing:

- *Acoelorrhaphe wrightii*
- *Roystonea regia*
- *Chamaerops humilis* var. *argentea*



# Shade Border Garden



KEY MAP

## Character:

- Lush understory
- Seasonal florals
- Textural overlays
- Color: Deep greens, maroon, red and pink

## Species such as:

- Abutilon spp.
- Aeonium 'Schwartkopf'
- Anthurium plowmanii
- Acanthus mollis
- Aspidistra
- Asplenium
- Bergenia cordifolia
- Carex 'Ice Dance'
- Cercis 'Forest Pansy'
- Dombeya
- Heuchera maxima
- Salvia spathacea
- Tradescantia spathacea

## Existing:

- Archontophoenix cunninghamiana
- Eucalyptus cladocalyx



# Morning Garden



KEY MAP

## Character:

- Airy forms
- Backlit blooms
- Shimmering textures
- Color: Silver, blonde, and lavender

## Species such as:

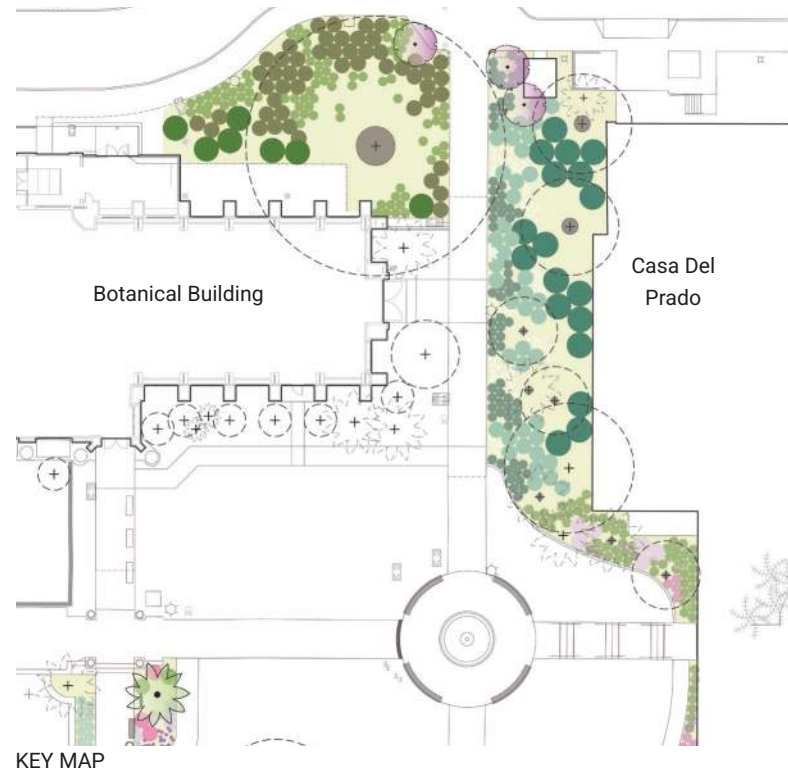
- Artemisia 'Powis Castle'
- Boutelou 'Blonde Ambition'
- Erigeron karvanskianus
- Guara 'White Butterflies'
- Leptospermum scoparium
- Muhlenbergia capillaris
- Salvia greggii
- Verbena bonariensis
- Westringia

## Existing:

- Bauhinia x blakeana
- Livistona chinensis



# Evening Garden



## Character:

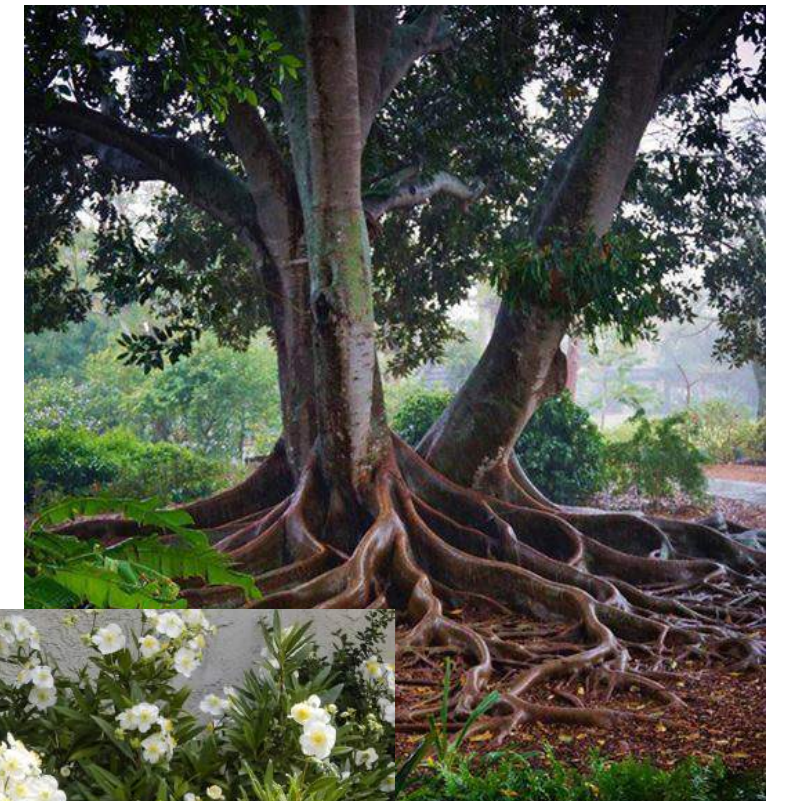
- Dappled understory
- Luminous blooms and foliage
- Sculptural forms
- Color: Dark green, silver, and white

## Species such as:

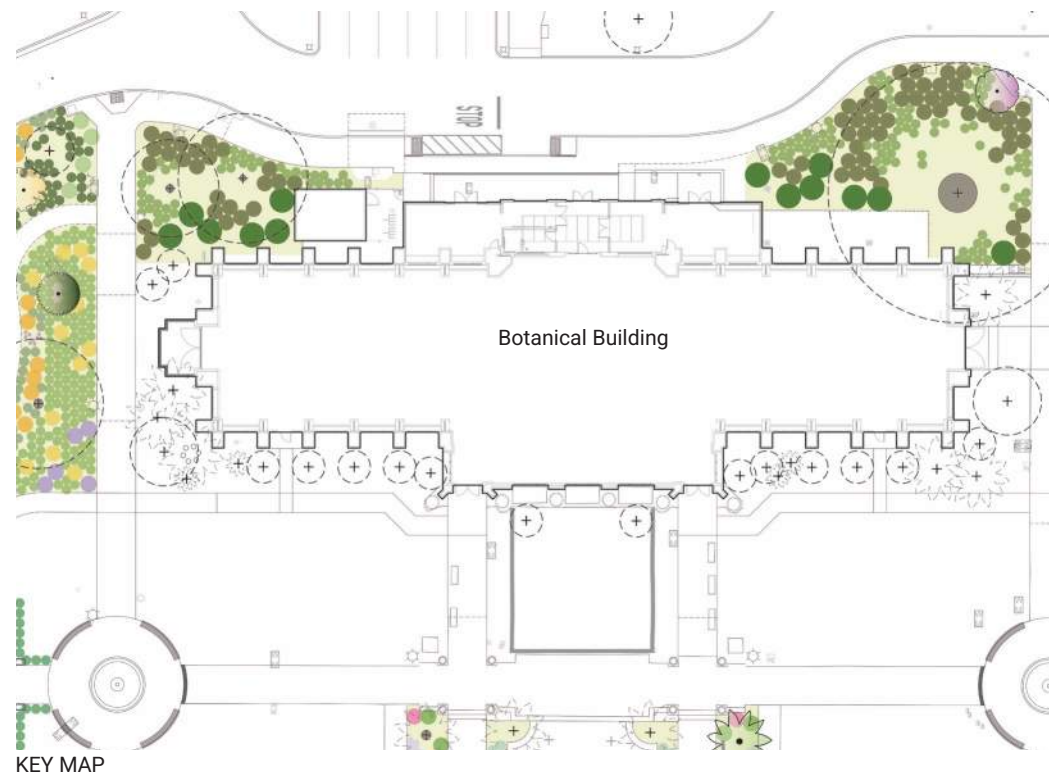
- Camellia
- Carpenteria
- Pittosporum
- Philadelphus
- Plectranthus argentus
- Azalea
- Acanthus spinosus
- Sanseveria ;Moonshine'
- Lomandra 'Platinum'
- Blechnum 'Silver Lady'
- Lamium
- Trachelospermum
- Freesia
- Iris douglasiana
- Narcissus
- Staghorn Fern (suspended overhead from trees)

## Existing:

- *Ficus microphylla*
- *Ficus lyrata*
- *Livistona chinensis*



# Foothills Garden



## Character:

- Subdued evergreens
- Soft textures
- Contrasting drifts
- Color: Dark greens with subtle seasonal color

## Species such as:

- *Heuchera maxima*
- *Myrica californica*
- *Polystichum munitum*
- *Rhamnus 'Eve Case'*
- *Ribes sanguineum* var. *glutinosum*
- *Symphoricarpos albus* var. *laevigatus*
- *Woodwardia fimbriata*

## Existing:

- *Ficus microphylla*
- *Quercus tomentella*
- *Cedrus deodara*





# Sensory Garden



## Character:

- Tactile forms
- Rustling foliage
- Playful color drifts
- Color: Gray blue green, sulphur yellow, and orange

## Species such as:

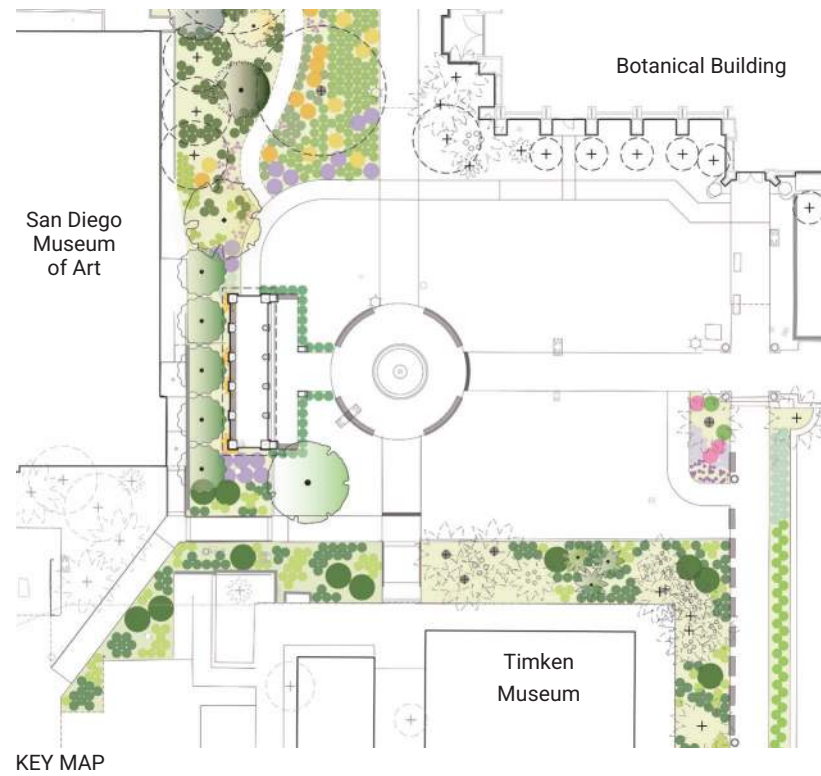
- *Aloe marlothii*
- *Acacia cultriformis*
- *Carex divulsa*
- *Heteromeles 'Davis Gold'*
- *Iris douglasiana*
- *Lomandra 'Breeze'*
- *Mahonia 'Soft Caress'*
- *Polystichum munitum*
- *Rhamnus 'Eve Case'*

## Existing:

- *Pinus canariensis*
- *Cedrus deodara*



# Fragrance Garden



## Character:

- Aromatic
- Romantic
- Enveloping
- Color: Lavender, cream, and gold

## Species such as:

- Jasminium
- Lavandula 'Meerlo'
- Rosmarinus 'Boule'
- Salvia spp.
- Carex divulsa
- Cistus
- Solandra maxima



Thank You!

