

1427

MISSION BEACH

X-SEC.



LEVEL BOOK

No. 100F

ENGINEERING DEPARTMENT,
CITY OF SAN DIEGO,
CALIFORNIA

MICROFILMED

DEC 23 1964

Our Leather Bound Engineers Note Books are carried in the following rulings:

- No. 380 LEVEL BOOK. Left and Right Hand Page the same as Left Hand Page of this Book.
- No. 382 FIELD BOOK. Left Hand Page as in this Book, Right Hand Page 4 x 4 to the inch, Center Line Red.
- No. 384 MINING TRANSIT BOOK. Left Hand Page as in this Book, Right Hand Page 8x8 to the inch, Center Line Red.
- No. 385 FIELD BOOK. Left Hand Page as in this Book, Right Hand Page 8 vertical and 4 horizontal lines to the inch, Center Line Red.

We also carry the Note Books listed above, bound in extra strong Fabri-Hide (otherwise the same quality of book), which can be furnished at a somewhat lower price.

In ordering Fabri-Hide covered books, add the letter "F" to catalog number.

THE FREDERICK POST CO.

ENGINEERING and DRAFTING SUPPLIES

IRVING PARK STATION

CHICAGO, ILL.

INDEXED

Completely

20' wide
Strand Way X Sec.
Queensdown Court to Santa Clara Place

4.18 St. Hill Sommermeier Osborne.
Top Sea Wall S. Santa Clara

BNI. BP	5.26	12.45	7.19
	oo: S. line Queensdown Court.		
W		4.7	7.8
⊕	INDIVID	4.8	7.7
E		4.8	7.7
	o+50 N. line Alley		
E		5.3	7.2
⊕		4.7	7.8
W		4.7	7.8
	o+46 S. line Alley		
W		4.7	7.8
⊕		4.7	7.8
E		5.1	7.4
	o+87 garage on W		
W-6.3	dirt floor	4.7	7.8 ✓
	o+96 garage on W.		
W-5.1	Wood floor	4.7	7.8 ✓
	1+16 N. line Pismo Court.		
E		4.7	7.6
⊕		4.8	7.7
W		4.8	7.7
	1+26 S. line Pismo Court.		
W		4.9	7.6
⊕		4.7	7.8
E		5.0	7.5

12.45
1+48

01

⊕	E-5.5 garage dirt floor	4.8	7.7 ✓
		1+67	
W-6.5	garage wood	4.8	7.7 ✓
	1+76 N. line Alley		
E		4.8	7.7
⊕		4.6	7.9
W		4.7	7.8
	1+92 S. line Alley		
W		4.7	7.8
⊕		4.8	7.7
E		4.9	7.6
	2+42 N. line Portsmouth Court		
E		5.0	7.5
⊕		5.0	7.5
W		5.1	7.4
	2+52 S. line Portsmouth Court.		
W		4.9	7.6
⊕		4.9	7.6
E		5.0	7.5
	2+86		
E		5.1	7.4
⊕		4.9	7.6
W		4.9	7.6
W+1.8	garage dirt floor	4.9	7.6 ✓

2+97.

E-5.5 garage dirt floor 5.5 70 ✓

3+02 N. line Alley

W 5.0 75

E 5.0 75

E 5.2 73

3+18 S. line Alley

E 5.2 73

E 5.0 75

W 5.0 75

3+56

W 5.3 72

E 5.0 75

E 5.3 72

E+1.4 garage dirt floor 5.3 72 ✓

3+98 N. line Santa Clara Place

E 5.7 68

E 5.2 73

W 5.2 73

4+22 S. line Santa Clara Place

W 5.3 72

E 5.3 72

E 5.4 71

Top cent. Blk.

T.P. S.E. Alley S. of Pismo

4.47 7.98

10 wide
6 Board walk
1h center

Queenstown Court & Sec
Mission Blvd. to Bulkhead

INDEXED

12.05

3

I.P. Page R.	4.07	12.05	7.98	+ 2' dirt	12.3	- 0.2
		oo = W. line Mission Blvd.		+ 2 Boardwalk	11.86	0.19
S on W. edge ent. walk	11.64		0.37 ✓	+ 8 " "	11.86	0.19
8 " " " "	11.63		0.42 ✓	+ 8 dirt	12.3	- 0.2
N " " " "	11.69		0.36 ✓	N. " "	12.3	- 0.2
		0.5 W			88' W.	
N dirt	12.4		- 0.3	N. dirt	12.7	- 0.6
+ 2. N. edge Boardwalk	11.95		0.1	+ 2 " "	12.3	- 0.2
+ 2. dirt	12.4		- 0.3	+ 2 Boardwalk	11.78	0.27
+ 8 " & walk	11.99		0.06	+ 8 " "	11.79	0.26
S	12.0		0.1	+ 8 dirt	12.3	- 0.2
		45.7 W		S. "	12.3	- 0.2
S. on E. end. ent. walk	11.85		0.20 ✓	S. door of house - floor	11.18	0.87 ✓
+ 2. " " " "	12.00		0.05		100' W	
+ 8 Boardwalk	12.00		0.05	S. dirt	11.9	0.2
N. dirt	12.2		- 0.1	S. Boardwalk	11.57	0.48
		60' W.		+ 2 " "	11.58	0.47
N. dirt	12.5		- 0.4	+ 8 " "	11.58	0.47
+ 2 " "	12.5		- 0.4	+ 8 dirt	12.3	- 0.2
+ 2. Boardwalk	11.94		0.11	N. " "	12.5	- 0.4
+ 8 " "	11.94		0.11		112' W.	
+ 8 N. End. w. edge ent. walk	12.11		- 0.06 ✓	N. dirt	11.2	0.9
S " " " " + dirt	12.11		- 0.06	+ 2. " "	11.2	0.9
		78' W		+ 2. Boardwalk	11.04	1.01
S. Boardwalk to S.	11.96		0.09 ✓	+ 8 " "	11.03	1.02
S. dirt.	12.3		- 0.2	S " "	11.00	1.05
				S dirt	13.00	- 0.95

Plotted 4-20-31
G.S.H.

12.05

122.5 W.

N. dirt	10.5	1.6
+2' "	10.5	1.6
+2' Board walk	10.12	1.93
+8 " "	10.14	1.91
+8 dirt	10.5	1.6
S " "	10.8	1.3
S. doorway floor	9.19	2.86 ✓

137.8

S. e. Edge board platform	8.45	2.60 ✓
S dirt	9.2	2.9
+2' "	9.2	2.9
+2' N. End E. edge platform	8.48	3.57
+2' Board walls	8.7.9	3.26
+8 " "	8.7.2	3.33
+8 dirt	9.5	2.6
N " "	9.5	2.6

148' W

N dirt	8.3	3.8
+2' "	8.3	3.8
+2' Board walk	7.68	4.37
+8 " "	7.72	4.33
+8 N. End. W. edge Board platform	7.87	4.18 ✓
+8 dirt	8.2	3.9
S " "	8.2	3.9

12.05

Queens town Court.

4

160' W.

S. dirt to E	7.6	4.5
S. " " W	7.0	5.1
+2' " " W	7.0	5.1
+2' " " E	7.6	4.5
+2 Board walk	6.53	5.52
+3 dirt E+W.	7.06	4.99
+8 Board walk	6.46	5.59
+8 dirt	7.1	5.0
N. " "	7.1	5.0

166.5 W.

N. dirt	6.2	5.9
+2' "	6.2	5.9
+2' Board walk	5.89	6.16
+8 " "	5.91	6.14
+8 dirt	6.8	5.3
+8 = E. End - N. edge porch to W.	3.79	8.16 ✓
S = " " " " W.	3.79	8.16
S. dirt	6.8	5.3

180.8 W

S. dirt	4.5	7.6
+2' dirt	4.5	7.6
+2 W. End. N. Edge porch to E.	3.73	8.32 ✓
+2 board walk	4.43	7.62
+8 " "	4.40	7.65
+8 dirt	4.5	7.6
N " "	4.5	7.6

12.05

183'3" W = E. line Strand Way

N. dirt	4.6	7.5
S. "	4.4	7.7
00 = W. line Strand Way.		
s. dirt	4.4	7.7
+ 2. "	4.4	7.7
+ 2. Boardwalk	3.96	8.09
+ 8. " "	3.92	8.03
N. " " to N.	3.92	8.03
N. dirt in Strand way	4.4	7.7
	4.3 W.	
N. dirt	4.4	7.7
N. boardwalk to N.	3.96	8.09
+ 2. " " "	3.96	8.09
+ 2. " " W.	4.12	7.93
+ 2. dirt	4.4	7.7
+ 8. " + Boardwalk	4.14	7.91
S. "	4.2	7.9
40' W.		
S. floor of house	5.24	6.78 ✓
S. dirt	5.7	6.4
+ 2. "	5.7	6.4
+ 2. boardwalk	5.55	6.50
+ 8. " "	5.55	6.50
+ 8. dirt	6.0	6.1
N. "	6.0	6.1

12.05

50' W.

N - 5 dirt	7.2	4.9
N. "	7.2	4.9
+ 2. "	7.2	4.9
+ 2. Boardwalk	6.00	6.05
+ 8. " "	5.95	6.10
+ 8. dirt under walk to S.	6.9	5.2
S. " " " " "	6.9	5.2
68.3 W.		
S - 4 dirt	9.4	2.7
S. "	9.4	2.7
+ 2. "	9.2	2.9
+ 2. Boardwalk +	6.63	5.42
+ 5. dirt	8.7	3.4
+ 8. Boardwalk + S.E. cor Building	6.67	5.38
+ 4. dirt	8.9	3.2
N. "	10.0	2.1
+ 5. "	9.3	2.8
72.2 W.		
N. - dirt	9.0	3.1
N. "	10.4	1.7
+ 2. "	9.0	3.1
+ 2. Boardwalk	6.77	5.28
+ 5. dirt	9.0	3.1
+ 8. Boardwalk + platform to S+W.	6.75	5.30 ✓
+ 8. dirt	9.1	3.0
S. "	9.1	3.0
+ 4. "	9.1	3.0

80.2 W = E. side N 9 S. Boardwalk

s. dirt	2.7	3.4
S.E. Edge Boardwalk	7.07	4.98
+ 2' dirt	8.5	3.6
+ 2' Boardwalk	7.05	5.00
+ 8' Boardwalk S.W. Cor Building	7.05	5.00 ✓
+ 8' dirt	9.6	2.5
N. dirt	9.0	3.1

90.2 W = W. edge N 9 S. Boardwalk

N. dirt	7.5	4.6
N. Boardwalk	7.09	4.96
S " "	7.07	4.98
S dirt	7.5	4.6

92.0 W = E. Edge cnt. walk at Ocean Front.

s. dirt	7.5	4.6
S. cnt. walk	7.44	4.61 ✓
N " "	7.44	4.57 ✓
N dirt	7.5	4.6

Pismo Court.
H. 11.47

4.6 E. of E. line Strand Way. (S.E. cor. Gas Co. M.H.)	4.41	7.06
0.5 S. of N. line N.E. Cor. Gas Co. M.H.	4.41	7.06
2.1 E. of E. line Strand Way.		
0.5 S. of N. line N.W. Cor. Gas Co. M.H.	4.22	7.25
3' " " " S.W. " " " " "	4.22	7.25

10' wide Pismo Court X Sec
 6' Boardwalk in center Mission Blvd to Sea Wall

IMPROVED

T.P. Page 2	3.49	11.47	7.98
		00 = W. line Mission Blvd.	
S. on W. edge emb. walk		11.22	0.25
N. " " " "		11.21	0.26
		0.5 W	
N. dirt		11.7	-0.2
+ 2 "		11.6	-0.1
+ 2 B. walk		11.46	0.01
+ 8 "		11.40	0.07
+ 8 dirt		11.6	-0.1
S "		11.6	-0.1
		38.1 W	
S. dirt		11.4	0.1
+ 2 " + walk		11.40	0.07
+ 8 " " " + S.E. core emb. walk		11.36	0.11 ✓
N. dirt to E.		11.26	0.21
N. emb. walk to W.		11.4	0.1
		47.5 W	
N. emb. walk to E.		11.25	0.22
N. dirt		11.6	-0.1
+ 2 "		11.6	-0.1
+ 2 Board walk + S.W. core emb. walk		11.27	0.20 ✓
+ 8 " " " + dirt		11.28	0.19
S "		11.2	0.3

Plotted 4-22-31

11.47
70' W

S. dirt		11.7	-0.2
+ 2 "		11.7	-0.2
+ 2, Boardwalk		11.08	0.39
+ 8 " "		11.11	0.36
+ 8 dirt		11.3	0.2
N "		11.3	0.2
N. wood patch		10.37	1.10 ✓
		87.5 W	
N. dirt		11.2	0.3
N. wood step		9.63	1.84 ✓
+ 2 " " "		10.32	1.15
+ 2' dirt		11.2	0.3
+ 2' Boardwalk		10.95	0.52
+ 8' " "		10.92	0.55
+ 8 dirt		11.2	0.3
S "		11.3	0.2
		92' W	
S. on S. edge emb. step		10.63	0.84 ✓
+ 2 " N " " " + B. walk		10.79	0.68
		100' W	
S. dirt		10.90	0.57
+ 2 "		10.90	0.57
+ 2 B. walk		10.60	0.87
+ 8 " "		10.68	0.79
+ 8 dirt		10.8	0.7
N "		10.8	0.7

11.47
113.8 W.

N. dirt	10.0	1.5
+ 2. "	10.0	1.5
+ 2 B. walk	9.75	1.72
+ 8 " "	9.75	1.72
+ 8 dirt	10.2	1.3
+ 8. N.E. cor wood porch.	7.97	3.50 ✓
S. dirt	10.2	1.3

115.8 W

2' S. of N. line = S.E. cor. wood porch 7.94 3.53 ✓

121.8 W

2' N. of S. line = N.W. cor wood porch 7.87 3.58 ✓

132. W

N. dirt	8.4	3.1
+ 2. "	8.4	3.1
+ 2. S.W. cor wood porch.	8.04	3.43 ✓
+ 2 B. walk	8.73	3.34
+ 8. " "	8.18	3.29
+ 8. dirt	8.7	2.8
S. " "	8.7	2.8

140.5 W.

S. dirt	8.0	3.5
+ 2. "	8.0	3.5
+ 2 N.E. cor wood porch	6.09	5.38 ✓
+ 2 B. walk	7.35	4.12
+ 8. " "	7.43	4.04
+ 8 dirt	8.2	3.3
N " "	8.2	3.3

11.47
144.5 W.

1' S. of N. line = S.E. cor. wood porch 5.23 6.24 ✓

148. W.

2' N. of S. line = N.W. cor wood porch 6.10 5.27 ✓

151. W

N. + 1' = S.W. cor wood porch 5.21 6.26 ✓

N.H. dirt 7.0 4.5

N + 2. " 7.0 4.5

+ 2. B. walk 6.32 5.15

+ 8. " " 6.58 4.89

+ 8. dirt 7.2 4.3

S " " 7.2 4.3

168. W.

S. dirt 5.6 5.9

+ 2. " 5.6 5.9

+ 2. W. end. B. walk 4.65 6.82

+ 8. " " " 4.50 6.97

+ 8 dirt 5.3 6.2

N " " 5.3 6.2

185.5 W. = S. line Strand way.

N. dirt 4.0 7.5

S. " " 4.0 7.5

00 = W. line strand way

N. dirt 3.8 7.7

S. " " 3.9 7.6

11.47

4.3 w.

s. dirt	4.0	7.5
+2. "	3.8	7.7
+2. B. walk	3.55	7.92
+8. " "	3.53	7.94
+8 dirt	3.8	7.7
N "	3.7	7.8

19.6 w.

N. floor House	3.26	8.21 ✓
N dirt	4.4	7.1
+2. "	4.4	7.1
+2 B. walk	4.16	7.31
+8. " "	4.12	7.35
+8 dirt	4.9	6.6
S "	5.0	6.5

32.1 w.

s. dirt	5.0	6.5
+2. "	5.0	6.5
+2 B. walk	4.52	6.95
+8. " "	4.61	6.86
+8 dirt	5.1	6.4
N "	5.2	6.3

50' w.

-5 dirt	8.0	3.5
N "	8.0	3.5
+2. "	8.0	3.5
+2 B. walk	5.08	5.39

11.47

Pismo Count

9

+8. B. Walk + N.E. Corwood platform	5.13	6.34 ✓
+8. dirt	6.9	4.6
S. "	6.9	4.6
+5 "	7.1	4.4

60' w.

s. dirt	5.7	5.8
+2. "	5.7	5.8
+5 "	6.0	5.5
N "	7.8	3.7
+5 "	7.8	3.7

70.8' w.

N. dirt	6.8	4.7
+2. "	6.8	4.7
+2. B. walk	6.15	5.32
+8. B. " + dirt	6.31	5.26
+8. N.W. cor wood platform	6.31	5.26 ✓
S. dirt	6.4	5.1

80' w.

s. dirt	6.6	4.9
+2. "	6.6	4.9
+2 B. walk	6.47	5.00
+8. " "	6.32	5.15
+8. dirt	6.5	5.0
N "	6.7	4.8

92.1 w. = Edge Cmt. Walk Ocean Front.

N. cmt. walk + dirt	6.88	4.59
S. " " " "	6.86	4.61

10 min
 Portsmouth Court X 500.
 Ocean Front Walk To, Bay side Walk

5-19-31
 Miller
 Sommer
 Osborne.

INDEXED

T.R. Page 2	3.93	11.91	7.98
23. W. of E. line Ocean front - E. edge Bk/Hood.			
S	7.40	4.51	W. edge int. walk
E	7.41	4.49	" " " "
N.	7.42	4.49	" " " "
12. W. of E. line Ocean front - E. edge int. walk			
N	7.23	4.68	E. edge int. walk
E	7.24	4.67	" " " "
S.	7.24	4.67	" " " "
11.8 W. of E. line Ocean Front.			
S sand	7.7	4.2	
N sand	7.6	4.3	
0+00 = E. line Ocean front.			
N sand	7.7	4.2	
+2. Boardwalk	6.6	5.3	
+6. " "	6.6	5.3	
S. sand	7.5	4.4	
0+16. E.			
S. sand	6.5	5.4	
+3.6 Boardwalk	5.9	6.0	
+7.6	5.9	6.0	
N. sand.	6.8	5.1	

Plotted May 21-31 1931

10

	11.91	0+26.3 E	
N. sand	6.7		5.2
+1.5 Boardwalk To E	5.9		6.0
+2.5 " " To W	5.5		6.4
+6.5 " " To W	5.9		6.0
+7.5 " " " E	5.9		6.0
S. sand.	6.7		5.2
	0+30		
S sand.	6.3		5.6
+2.5 walk	5.8		6.1
+7.5 "	5.8		6.1
N	7.1		4.8
	0+31		
N sand.	5.8		6.1
+2.4 sand	5.8		6.1
+2.6 "	6.9		5.0
S " "	7.4		4.5
	0+40		
0.3 N. of S. = Mudge porch.	5.1		6.8
" " " sand.	6.3		5.6
+2. Boardwalk	5.6		6.3
+8 " "	5.5		6.4
N. sand	7.2		4.7
N. Floor of house	4.7		7.2

11.91

0+55

N. sand	6.5	5.4
Boardwalk	4.8	7.1
" "	5.0	6.9
S. sand	5.5	6.4

0+70

S. on N. edge porch	4.0	7.9
S. Brick walk	4.5	7.4
Board walk	4.5	7.4
+2 sand.	5.0	6.9
B. Walk	4.4	7.5
N. sand.	5.5	6.4

0+79 = E. End walk.

N+1.8 walks	4.0	7.9
+7.8 walks	4.0	7.9

0+80 = W. line S/Fand way

S	4.6	7.3
S	4.6	7.3
N	4.6	7.3

0+00 = E. line S/Fand way.

S	4.5	7.4
+2 B. Walk	4.4	7.5
+8 " "	4.4	7.5
N.	4.4	7.5

11.91

Portsmouth Court

0+25

N. on W. edge ent. walk	7.04	4.87 ↓
+2. " " " "	7.05	4.86
+2 B. walk	6.4	5.5
+8 " "	6.3	5.6
S sand.	6.9	5.0

0+30

S. sand.	7.3	4.6
+2.2 B. walk	6.4	5.3
+8.2 " "	6.7	5.2
+8.2 E. Edge ent. walk	7.11	4.80
N. " " " "	7.11	4.80

0+36

S. on N. edge porch	6.73	5.18 ✓
---------------------	------	--------

0+50'

N. sand	8.1	3.8
+1.8	8.1	3.8
+7.8	8.0	3.9
S	8.5	3.4

0+51

S sand	8.6	3.3
N "	8.7	3.2

0+75

S sand	10.1	1.8
+2.2 B. walk	9.6	2.3
+8.2 " "	9.7	2.2
N. sand	10.3	1.6

11

11.91
0+80.

N. sand	10.8	1.1
S. "	10.8	1.1
0+87		
S on N. edge porch	9.7	2.2
1+00		
S. sand	11.7	0.2
+2' B. walk	11.0	0.9
+8' " "	11.0	0.9
N. sand	11.5	0.4

1+25

N. sand	12.0	-0.1
+2' = B. walk	11.8	0.1
+8' = B. "	11.8	0.1
S. sand	12.0	-0.1

1+50

S. sand	12.1	-0.2
+2' B. walk	11.9	0.0
+8' " "	11.9	0.0
N. sand	12.0	-0.1

1+70

N. floor of Cafe.	11.6	0.3
N. sand	12.1	-0.2
+2' B. walk	12.0	-0.1
+8' B. "	12.0	-0.1
S. sand	12.3	-0.4

11.71

1+83 $\frac{1}{2}$ = N. Lin + Mission Blvd

S. on. w. edge cmt. walk	11.73	0.18		
$\frac{1}{2}$ " " " " " B. walk.	11.74	0.17		
N " " " " " "	11.71	0.20		
T.P.	4.24	4.49	11.66	00.25
0+00 = E. Lin + Mission Blvd.				
0+01 = E. edge cmt. walk.				
N. E. edge cmt. walk	4.70	-0.21		
$\frac{1}{2}$ " " " "	4.69	-0.20		
S. " " " "	4.68	-0.19		

0+01⁰⁰

S. sand	5.4	-0.9
+2' B. Walk	4.9	-0.4
+8' B. Walk	4.8	-0.3
N. sand	5.6	-1.1

0+15.

N. sand	5.6	-1.1
+2' B. Walk	4.8	-0.3
+8' " "	4.8	-0.3
S. sand	5.9	-1.4

0+40

S. sand	5.0	-0.5
+2' = B. walk	4.6	-0.1
+8' = " "	4.6	-0.1
N. sand	4.6	-0.1
+2.7 floor house	3.5	1.0

12

4.49
0+65.

N. - 2.6 floor House	3.5	1.0	✓
N. sand	4.3	0.2	
+ 2' B. walk	4.3	0.2	
+ 8' " "	4.3	0.2	
S. sand.	4.6	- 0.1	
+ 0.8 floorhouse	3.1	1.4	✓
	0+88		
S - 1' porch.	3.5	1.0	✓
S. sand	4.6	- 0.1	
+ 2' B. Walk	4.2	0.3	
+ 8' " "	4.1	0.4	
N. sand.	4.3	0.2	
	1+00		
N. sand	4.3	0.2	
+ 2' B. walk	4.1	0.4	
+ 8' " "	4.2	0.3	
S. sand.	5.3	- 0.8	
	1+16		
S. sand.	4.5	0.0	
+ 2' B. walk	4.0	0.5	
+ 8' " "	4.1	0.4	
N. sand	4.3	0.2	
N. on s. edge stoop.	2.9	1.6	✓

4.49
1+40

- 1.1 on s. edge Veranda.	2.8	1.7	✓
N. sand.	4.5	0.0	
+ 2' B. walk	4.3	0.2	
+ 8' " "	4.2	0.3	
S. sand.	4.6	- 0.1	
	1+63		
S + 1.4 N. edge piazza	3.5	1.0	✓
S. sand.	4.5	0.0	
+ 2' B. Walk.	4.3	0.2	
+ 8' B. " "	4.4	0.1	
N. sand.	5.0	- 0.5	
	1+89.		
N - 0.3 s. edge cnt. porch.	3.94	0.55	✓
N - 0.2 N. end. of cnt walk	4.48	0.01	✓
N sand	4.60	- 0.11	
+ 2' B. Walk + s. end. cnt. walk.	4.60	- 0.11	✓
+ 8' " "	4.6	- 0.1	
+ 8' = N. edge porch.	4.2	0.3	✓
	2+00		
S. sand	5.4	- 0.9	
+ 2' B. walk	4.7	- 0.2	
+ 8' " "	4.7	- 0.2	
N. sand.	4.8	- 0.3	

4.49

R+25

N. sand.	4.8	-0.3
+2 B. Walk	4.8	-0.3
+8 " "	4.8	-0.3
S. sand.	5.8	-1.3

R+38

S-1.5 floorhouse	4.4	0.1
------------------	-----	-----

R+45 = E. End B. Walk

S. sand	5.5	-1.0
+2 B. walk	4.8	-0.3
+8 B. "	4.8	-0.3
N. sand	5.1	-0.6

R+46^{1/2} = W. Line Bayside Lane, 16' wide

N. Roadway	5.5	-1.0
S. " "	5.5	-1.0

0+00 = { w. end. B. walk.
E. Line Bayside Lane

S. Roadway	6.0	-1.5
B. walk.	5.2	-0.7
B. walk	5.1	-0.6
N. Roadway	6.0	-1.5

0+05

N. sand.	5.5	-1.0
S. "	5.8	-1.3

0+40

S. sand	6.2	-1.7
B. walk.	5.2	-0.7
" "	5.1	-0.6
N. sand	6.0	-1.5

4.49

Portsmouth Court

14

0+82.30 = W. edge Bayside B. Walk, 6' wide

N. sand	5.2	-0.7
N. on Bayside B. walk.	4.40	0.09
Portsmouth B. walk.	4.40	+0.1 0.09
" " "	4.40	0.09
S. on Bayside " "	4.40	0.09
S. sand.	5.3	-0.8
B.M.	4.99	-0.50
T.P.	11.57 11.82	4.24 +0.25
chk original B.M.	3.82	7.99 = 7.98

16' wide Dayside Lake X see. Queenstown Court to Ostend Court

5-20-31 mill

BM Page 14 3.98 3.48 -0.50

N. Line Queenstown Court, 10' wide

W. 4.5 -1.0

4.6 -1.1

4.6 -1.1

S. Line Queenstown Court.

4.6 -1.1

4.6 -1.1

W. 4.5 -1.0

50'.S = N. Line Alley 16' wide

W. 4.6 -1.1

4.5 -1.0

E. 4.5 -1.0

S. Line Alley

E. 4.4 -0.9

4.5 -1.0

W. 4.6 -1.1

7'.5 Garage on wood floor 5'.5 Back

E-5.5 floor 4.0 -0.5 ✓

50'.S = N. Line Pismo Court 10' wide

W. 4.7 -1.2

4.7 -1.2

E. 4.7 -1.2

Plotted
Mar
22
1931

R = 2453.39 N. Line of 0

3.48

15

S. Line Pismo Court. 4.6 -1.1

4.5 -1.0

W. 4.5 -1.0

50'.S = N. Line Alley 16' wide

W. 4.6 -1.1

4.5 -1.0

E. 4.6 -1.1

S. Line Alley

E. 4.5 -1.0

4.6 -1.1

W. 4.6 -1.1

50'.S. N. Line Portsmouth Court 10' wide

W. 4.5 -1.0

4.7 -1.2

E. 4.9 -1.4

S. Line Portsmouth Court.

E. 5.0 -1.5

4.8 -1.3

W. 4.5 -1.0

16'.5. garage on E. dirt floor 2'. Back

E-2'. floor 4.9 -1.4 ✓

50'.S = N. Line Alley 16' wide

N. 4.8 -1.3

4.7 -1.2

E. 5.0 -1.5

3.48
S. Line Alley N. of Santa Clara

E 4.6 -1.1
± 4.6 -1.1
W. 4.8 -1.3

40' S

W 5.1 -1.6
± 4.9 -1.4
E 4.9 -1.4

80.5 S. = N. Line Santa Clara Place 24' wide

E 4.6 -1.1
± 4.6 -1.1
W 4.7 -1.2

+12' = ± Santa Clara Place

W. 4.2 -0.7
± 4.3 -0.8
E. 4.1 -0.6

S. Line Santa Clara Place

E 4.2 -0.7
± 4.3 -0.8
W. 4.2 -0.7

40' S.

W 4.9 -1.4
± 4.5 -1.0
E. 4.5 -1.0

3.48
68' S. garage on E. Dirt floor 6' Back

Dayside Lane.

16
89

E-6' floor 4.5 -1.0
E 4.5 -1.0
± 4.4 -0.9
W. 4.6 -1.1

99.35 = N. Line Alley 16' wide

W 4.2 -0.7
± 4.2 -0.7
E 4.5 -1.0

M.H. ± Alley and ± Lane

Top M.H. 4.20 -0.72 ✓

8-3' garage dirt floor S. Line Alley.

E 4.3 -0.8 ✓
± 4.4 -0.9
± 4.3 -0.8
W. 4.4 -0.9

21' S. ± Double garage on E. dirt floor 6' Back ✓ 89.

W. 4.7 -1.2
± 4.5 -1.0
E 4.6 -1.1

E+6' floor. 4.7 -1.2 ✓

66.5. garage on E. dirt floor 7' Back ✓

E-7' floor 4.7 -1.2 ✓
E 4.7 -1.2
± 4.6 -1.1
W. 4.8 -1.3

89.5 = N. line Ostend. Court. 10' wide

W.	4.6	-1.1
±	4.5	-1.0
E	4.6	-1.1

S. Line Ostend Court.

E	4.6	-1.1
±	4.5	-1.0
W	4.6	-1.1
chk B.M.	3.98	-0.50 ✓

6' wide Bay side Walk X 5 sec.
 Queenstown Court to Ostend Court.

B.M. Page 14. 4.45 3.95 -0.50
 Bag side walk located by measurements from Mission Blvd. at Courts + Place
 N. Line Queenstown Court

3.4 W. of W. line = W. edge B. walk + sand 3.8 0.1
 W. line on B. walk 3.8 0.1
 + 2.6 E. edge " " 3.7 0.2
 E. sand 4.1 -0.2

INDEXED

S. line Queenstown Court.
 E. sand, 4.0 -0.1
 + 3.4 = E. Edge B. Walk 3.6 0.3
 W. on " " 3.7 0.2
 + 3.4 = W. edge " " 3.7 0.2
 + 3.5 sand, 4.0 -0.1

Plotted May 28-1931

58.2 S.
 W. line B. Walk sand, 3.8 0.1
 " " " " on walk, 3.6 0.3
 E " " " " " 3.7 0.2
 E. " " " " sand, 3.8 0.1
 66 ft " " " " " 4.0 -0.1

116.0 S. = N. Line Pismo Court.
 E. sand 4.2 -0.3
 W. " 3.8 0.1

121.3 S. = G. Pismo Court, 10' wide
 7.8 W. of W. line = W. edge B. Walk 3.4 0.5
 1.8 " " " = E " " " 3.4 0.5 ✓
 1.8 " " " sand 4.6 -0.7
 W. " 4.6 -0.7
 E. " 5.2 -1.3

3.95
 10.5.0 X G. Pismo Court.

18

E sand, 4.1 -0.2
 W " 3.9 0.0

50' S.
 W sand 4.1 -0.2
 E " 4.1 -0.2

126.2 S. = G. Portsmouth Court.
 E sand 4.8 -0.9
 + 4.2 " 4.8 -0.9
 + 4.2 E. edge B. walk 3.8 0.1
 W. on " " 3.8 0.1
 + 4.2 W " " " 3.8 +0.1 0.1
 + 4.2 sand, 4.8 -0.9

50' S.
 W sand, 5.3 -1.2 ✓
 B. walk 4.4 -0.5 ✓
 E. sand, 4.8 -0.9 ✓

100' S.
 E. sand 5.0 -1.1
 B. walk 4.6 -0.7
 W. sand, 5.4 -1.5
 T.P. 2.06 1.54 4.47 -0.52

152' S. = N. Line Santa Clara Place 24' wide
 W. sand, to N. 2.6 -1.1
 W. Roadway to SW. 2.1 -0.6
 W. = W. edge B. Walk. 2.0 -0.5
 E. E. " " " 2.0 -0.5
 E. sand. 2.8 -1.3

⊕ Santa Clara Place

E. = E. edge B. walk & sand. 1.9 -0.4

W = W. " " " & Roadway 2.0 -0.5

5. line Santa Clara Place

W. on w. edge B. walk - sand & Roadway 2.0 -0.5

E. " " " " & " 2.0 -0.5

40' S

E. = E. edge B. walk + sand. 2.1 -0.6

W = W. " " " " " 2.0 -0.5

50' S

W. = W. edge B. walk & sand. 2.0 -0.5

+ 5' sand. under B. walk 2.6 -1.1

E. = E. edge " " 2.1 -0.6

E. on sand. 3.2 -1.7

75' S

E. sand 3.5 -2.0

E. = E. edge B. walk 2.2 -0.7

+ 2' sand. under walk 2.5 -1.0

W. = W. edge B. walk. 2.1 -0.6

100' S

W. = W. edge B. walk + sand. 2.0 -0.5

+ 1. sand. under B. walk 3.2 -1.7

E. = E. edge B. walk 2.1 -0.6

E. sand 4.0 -2.5

125' S

E. sand 4.3 -2.8

E. = E. edge B. walk 1.8 -0.3

+ 5' sand. under walk 3.3 -1.8

W. = W. edge B. walk + sand 2.1 -0.6

130' S

W. = W. edge B. walk + sand 2.1 -0.6

+ 4' sand. under walk 3.3 -1.8

E. = E. edge B. walk 1.8 -0.3

E. sand. 4.4 -2.9

175' S

E. sand 4.4 -2.9

E. on E. edge B. walk 2.0 -0.5

+ 1. sand under " 3.8 -2.3

W. = W. edge B. walk + sand. 2.0 -0.5

212.4 S = ⊕ Ostend Court

W. on W. edge B. walk + sand 2.1 -0.6

+ 1. sand under " " 3.0 1.5

E. " E. " " " 2.1 0.6

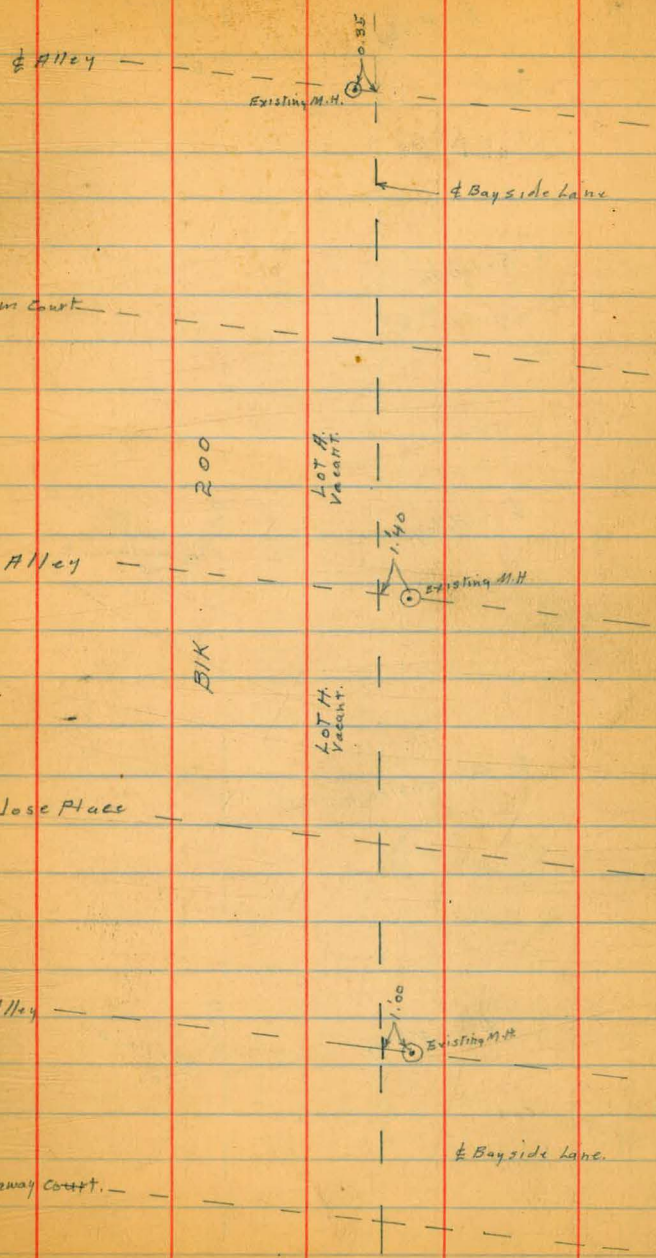
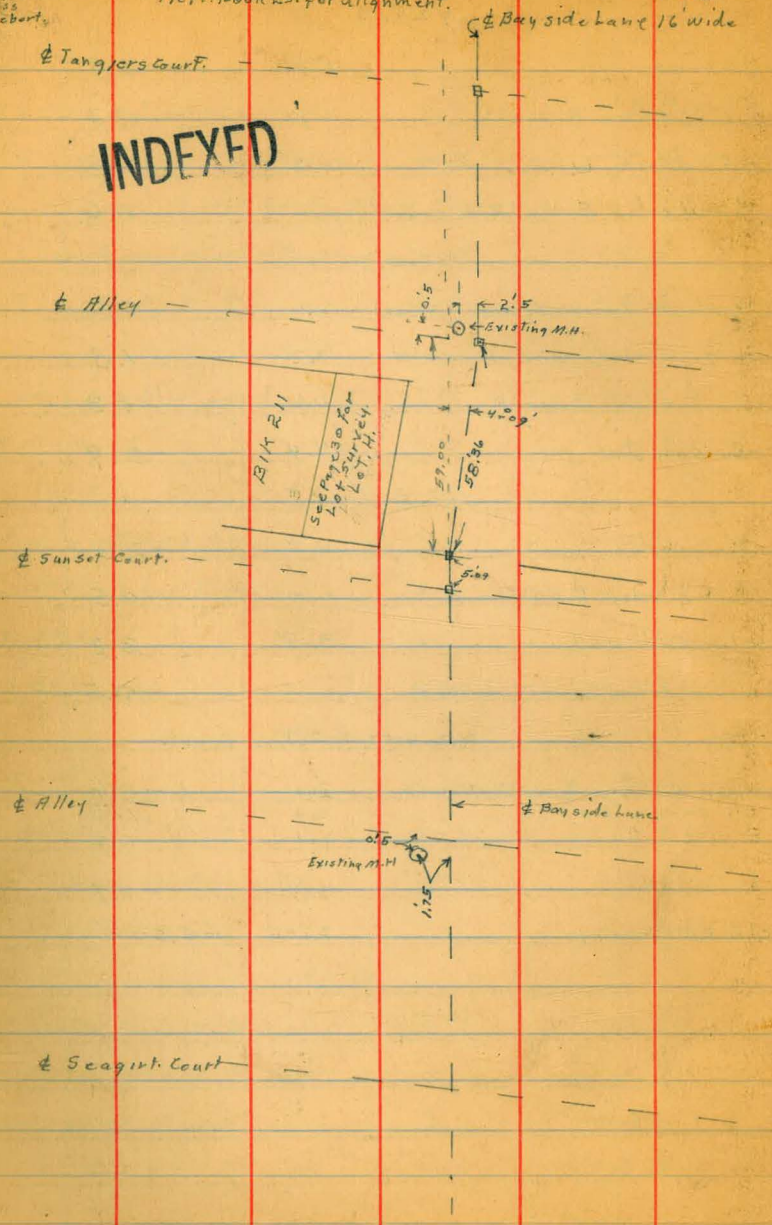
E. sand. 4.4 -2.9

chk. B.M. Page 14 2.04 -0.50 ✓

Miller
Walker
Bliss
Preburt

Location of Sewers in Bayside Lane indexed
e.s.k.
Tie Pt. Book R.5. for alignment.

INDEXED



E - Alley -
 Bayside Lane 16. wide
 Existing M.H.
 1.7

E - Redondo -
 Court.

E - Alley -
 Existing M.H.
 0.5

E - Quochstown -
 Court.

E - Alley -
 Existing M.H.
 0.4

E - Pismo -
 Court.

E - Alley -
 Existing M.H.
 4.0

E - Portsmouth -
 Court.

E - Alley -
 Existing M.H.
 0.5

E - Santa Clara -
 Place.

Cross Section Mickaway Court
 Missions Blvd. to Bay side Walk 10' wide

Station on E of Board Walk

BM 055 763 708
 TP 346 3.69 7.40 0.23

0+0 - 25 = Ely Edge Conc. Walk

S on Walk 3.88 -0.19
 L " INDEXED 4.00 -0.31
 H " 4.00 -0.31

0+0 = E.L. Missions Blvd

H 4.3 -0.6
 +2 = N Edge Existing Board Walk 4.12 -0.43
 +8 - S " " " 4.20 -0.51
 +10.5 Ground 4.30 -0.61
 S Conc. Walk 3.83 -0.14

0+33

S 4.5 -0.8
 +2 = S Edge Board Walk 4.2 -0.5
 +8 = H " " " 4.2 -0.5
 H 4.3 -0.6

0+44 = E Board Walk on N 32' wide

H 4.09 -0.40
 +2 on Board Walk 4.16 -0.47
 +8 " " " 4.17 -0.48
 S 4.5 -0.8

0+52.80 = E Conc. Walk on N 32' wide

S 4.6 -0.9
 +2 on Board Walk 4.24 -0.55

5' W of
 San Jose +
 San Mateo

Plotted on 10/10/00

3.69

+8 = S End Conc. Walk 4.19 -0.50
 H " " " " 4.23 -0.54

0+83.40 = E Brick Walk on S

H 4.3 -0.6
 +2 on Board Walk 4.30 -0.61
 +8 " " " " 4.35 -0.66
 S on Brick Walk 4.43 -0.74
 +2 = E. Junc on Floor of Ho. 3.25 +0.44
 TP 3.37 3.47 3.59 0.10

0+99.2 = E Conc. Walk on N 32' wide

S 4.3 -0.8
 +2 on Board Walk 4.19 -0.70
 +8 = S E of Conc. Walk 4.14 -0.67
 H on " " " 4.15 -0.68

1+01.7 = E Walk Board on S 4' wide

H 4.27 -0.80
 +2 = N E Board Walk 4.15 -0.68
 +8 = S E " " " 4.12 -0.65
 +8 = H of Board 3.42 +0.05
 S 3.31 +0.16
 +2 = Floor House 3.57 +0.90

1+11.5 = E Board Walk on N 10' wide

S 4.4 -0.9
 +2 on Board Walk 4.12 -0.65
 +8 = S E of Board Walk front 4.17 -0.70
 H 4.05 -0.58
 +3.5 House Floor 3.37 +0.10

July 1881
 Moore
 Survey
 North

1+23.5 = 2 Board Walk S

H	• 1.9	-0.9
+2 on Board Walk	4.17	-0.70
+8 " " "	4.18	-0.71
S on Board Walk	4.15	-0.68
+2.5 = House Floor	3.15	+0.32

1+39.6 = 1 1/4 Board Walk on S

S on Board Walk	4.23	-0.76
+2 on " "	4.22	-0.75
+8 " " "	4.21	-0.74
H " " "	4.2	-0.75

1+47.70 = 1 1/2 Board Walk on N

H on Board Walk	4.10	-0.63
+2 " " "	4.21	-0.74
+8 " " "	4.25	-0.78
S " " "	4.23	-0.76

1+52.8 = 1 1/4 Steps in Court

S+2.5 = Top Step	3.67	-0.20
on Board Walk	4.24	-0.77

1+60 = Fly of Walk on N

H on Board Walk	4.20	-0.73
+2 " " "	4.27	-0.80
+7.5 " " "	4.25	-0.78
+7.5 = Top Lower Step	3.67	-0.20
S = House Floor	3.01	+0.37

1+63.4 = Fly Steps in Court

S Top Top Step	3.01	+0.46
+2.5 Top Lower Step	3.66	-0.19
+2.5 on Board Walk	4.22	-0.75
+8 " " "	4.32	-0.85
H " " "	4.5	-1.00

1+68.80 = 2 Board Walk on N

+6 House Floor	3.70	-0.23
H on Walk	4.31	-0.84
+2 " " "	4.35	-0.88
+8 " " "	4.23	-0.76
S " " "	4.24	-0.77

1+76.8 = Fly of Board Walk on S

S on Board Walk	4.29	-0.82
+2 " " "	4.28	-0.81
+8 " " "	4.35	-0.88
H " " "	4.80	-1.33

1+79.70 = 1 1/4 of Walk on S

H " " "	4.8	-1.33
+2 on Board Walk	4.21	-0.81
+8 " " "	4.27	-0.80
S " " "	4.22	-0.75

1+89.70 = Fly of Board Walk on S

S on Board Walk	4.25	-0.88
+2 " " "	4.27	-0.70
+8 " " "	4.28	-0.91
H " " "	4.8	-1.33

2+03.42 = N L Bayside Lane

N	02 Board Walk	430	-0.83
N	02 Ground	480	-1.33
+2		43	-0.8
+8		44	-0.9
S	02 Top Header	44	-0.9
S	" Ground	48	-1.3

0+0 F Line Bayside Lane

S		50	-1.5
+2	02 Board Walk	417	-0.8
+2	" Ground	49	-1.4
+8	" "	49	-1.4
+1	02 Board Walk	414	-0.67
N		49	-1.4

0+12.10 = L Board Walk on N 15 Side

-2	= Basement Floor	350	-0.03
N	02 Board Walk	403	-0.56
+2	" " "	414	-0.67
+8	" " "	418	-0.71
+8	02 Ground	52	-1.7
S		52	-1.7

0+26.9 = L Board Walk on N 25 Side

S		50	-1.5
+2	02 Gr.	49	-1.4
+2	02 Board Walk	410	-0.63
+8		407	-0.60

Plotted REB

N	02 Board Walk	406	-0.59
N	" Ground	50	-1.5

0+31.2

N		49	-1.4
+2	02 Gr.	48	-1.3
+2	02 Walk	402	-0.55
+8	" "	408	-0.61
+8	02 Gr.	49	-1.4
+9	= N 1/2 Edge House	50	-1.5

0+47.70

N+03 = N 1/2 Edge House		45	-1.0
+2	02 Gr.	44	-0.9
+2	02 Walk	391	-0.44
+8	" "	381	-0.34
+8	" Gr.	44	-0.9
N		44	-0.9

0+58.0 = L Board Walk on 3 Side

N		43	-0.8
+2	02 Gr.	43	-0.8
+2	02 Walk	371	-0.24
+8	" "	384	-0.37
S	02 Walk	364	-0.17
S	" Gr.	44	-0.9

078070 = H Edge 6 Board Walk - Bayside Walk

S	03 Board Walk		3.43	+0.04
+2	" " "		3.43	+0.04
+8	" " "		3.40	+0.02
H	" " "		3.41	+0.06
TP	887	7.62	4.72	-1.25
BM			0.55	7.07

SWBP
Slope 5% to SW
708

Cross Section Salem Court
 From East Line Ocean Walk to West Line 10' Wide
 of Bayside Walk

Indexed c.s.k.

9.83

26
 July 18-21

Stationing	BM	11.10	7.08	S.N.B.P. Eolosect Water		0+50.30 = Fly	Porch on N	
	4.62				-10	58	4.0	
		0+0 -12 = E Line Conc Walk			N	Ground	56	4.2
S	07 Conc Walk	639	4.71		N	02 Porch	310	6.73
TP	5.15	983	6.42	4.68	+1	56	4.2	
N	07 Conc Walk	517	4.66		N	07 Beard Walk	3.00	6.83
		0+0 = E Line Ocean Walk			+9	" "	3.07	6.76
N		51	4.4		S		56	4.2
S		53	4.5			0+60		
		0+22			S		50	4.8
S		54	4.4		N	02 Ground	49	3.9
N		58	4.0		N	Board Walk	327	6.56
+5		64	3.4		+9	" "	314	6.69
		0+31 = W/y of Board Porch and			+9	Ground	50	4.8
-10		86	1.2		N		50	4.8
N	07 Ground	66	3.2		+5		40	5.8
N	07 Board Porch	321	6.62			0+79.2 = E End 8' Board Walk		west line Grand Way
S		58	4.0		N		40	5.8
		0+47 = W End of 8' Board Walk			N	Ground	39	5.9
S		56	4.2		N	07 Walk	348	6.35
+10	Ground	56	4.2		+9	" "	341	6.42
+10	Side of Board Walk	300	6.83		+9	Ground	39	5.9
+9	" "	315	6.68		S		39	5.9
N	07 Board Porch	318	6.65					
N	Ground	55	4.3					

plotted MEB

July 13-31

983

East Line Strand May - 010

S	36	6.2
+1 - S Edge Board Walk	351	6.32
+9 - N " " "	357	6.26
N	39	5.9
0+4 = 1/2 of Porch on S		
N	39	5.9
+1 on Board Walk	379	6.04
+9 " " "	379	6.04
+9.5 Top Porch	333	6.50
S Ground	41	5.7
0+20 = 1/2 of Porch on S		
S	48	5.0
S - Top Porch	345	6.38
+1 Board Walk	439	5.44
+9 " " "	440	5.43
N	48	5.0
0+26		
N	50	4.8
+1 - Board Walk	465	5.18
+9 " " "	462	5.21
+9 Ground	56	4.2
S	57	4.1
0+391 = 1/2 Board Walk on S		
S on Walk	512	4.71

983

27

+1 Board Walk	514	4.69
+9 " " "	52	4.6
N	58	4.6
0+64 = 1/2 22 Wide Board Walk on S		
N	64	3.4
+1 Board Walk	64	3.4
+9 " " "	631	3.62
S on Walk	625	3.58
1+00		
S	79	1.9
+1 Board Walk	792	1.90
+9 " " "	798	1.85
N	80	1.8
1+19.2 = 1/2 of House on S		
N	86	1.2
+1 Board Walk	862	1.21
+9 " " "	862	1.21
+9 Ground	95	0.3
S	95	0.3
+3 = 1/2 Do of Facing Wall	945	0.38
1+30.5 = 1/2 House on S		
S - 1/2 26 Door on Floor	935	0.48
704 = Door Sill	944	0.39
+1 on Board Walk	911	0.72
+9 " " "	913	0.70
N	91	0.7

Fit This Door

1 + 4.28 = East End Board Walk =
W.L. Mission Blvd

N		9.6	0.2
+1	Board Walk	9.60	0.23
+9	"	9.55	0.28
S		10.0	-0.2

1 + 97.3 = Fly Edge Core Walk

S	on Core Walk	9.62	0.21
N	"	9.59	0.24
TP	385 4.01	9.67	0.16

2.5' N of E.L. Mission Blvd = Fly Edge Core Walk

N	on Core Walk	4.34	-0.33
S	"	4.31	-0.30

East Line Mission Blvd = 0.0

S		4.7	-0.7
N		4.6	-0.6

0 + 3.5

N		4.5	-0.5
S		4.7	-0.7

0 + 63.8 = 1/4 of Porch on S

S	on Ground	4.7	-0.7
+ad	N Edge Porch Top	3.19	+0.82
N		4.6	-0.6

0 + 71.5 = Fly of Porch on S

N		5.0	-1.0
+9.2	on Ground	4.9	-0.9
+9.2	on Top Porch	3.10	-0.91

S		5.0	-1.0
	0 + 92.2 = 1/2 Hide Porch on S		
S	on Top Porch	3.96	+0.05
+1.0	on Bottom Step	4.41	-0.40
+2.0	Ground	4.9	-0.9
N		5.0	-1.0

1 + 14 = 1/2 Board Walk on N

N	of Door on Floor	4.00	+0.01
N	on Board Walk	4.50	-0.49
S		5.1	-1.1

1 + 26.3 = 1/2 Board Walk on N 2' Hide

S		5.3	-1.3
+6	Fly Board Walk	4.70	-0.69
N	on " "	4.74	-0.73

1 + 32.5 = 1/2 Board Walk on N

N	on Bottom Step	4.25	-0.24
+1	on Board Walk	4.75	-0.74
S		5.2	-1.2

1 + 52.2 = 1/2 5' Board Walk on N

S		5.2	-1.2
+6	S End Walk	4.73	-0.72
N	on Board Walk	4.72	-0.71

1 + 59.2 = 1/2 4' Board Walk on N

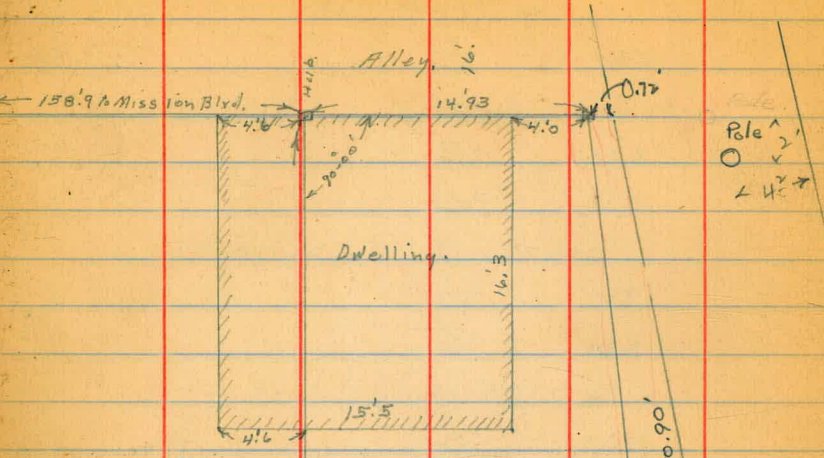
N + 0.4	of Door on Floor	4.12	-0.11
+0.4	on Board Walk	4.5	-0.5
1/2	on " "	4.80	-0.8

4.01 Ford Page 31

S		5.2	-1.2
	1+81.0 = N Line Bayside Lane		
S		5.3	-1.3
N		5.3	-1.3
	1/2 of East Line Bayside Lane		
N		5.5	-1.5
S		5.3	-1.3
	East Line Bayside Lane: 0+0		
S		5.2	-1.2
N		4.8	-0.8
	0+13.4 = 2 1/2 Rock Walk		
N		4.8	-0.8
S	07 Rock Walk	4.8	-0.8
	0+25		
S		5.10	-1.09
N		5.1	-1.1
	0+50		
N		4.4	-0.4
S		5.1	-1.1
	0+81 = N Line Bayside Walk		
S	07 Ground	4.5	-0.5
S	" Guard Walk	39.1	+0.05
N	" " "	39.1	+0.05
N	Ground	4.0	0.0

indexed c.s.k.

Miller
Walker
Bliss
6-19-31

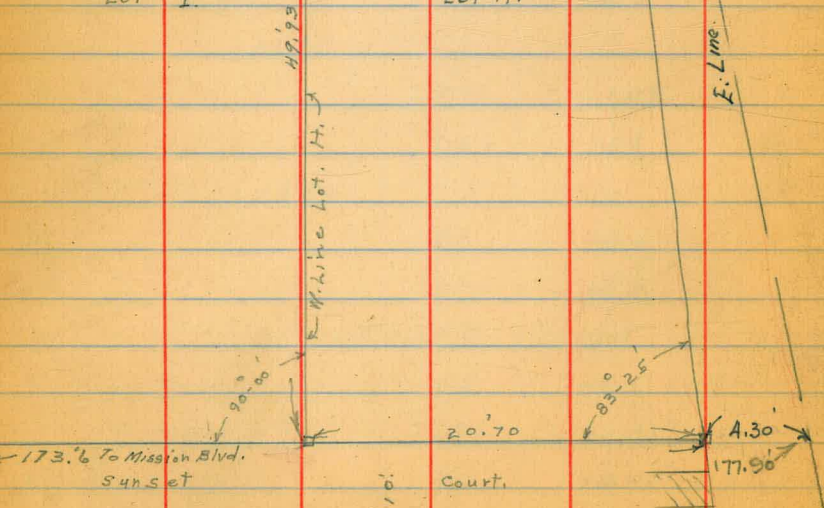


Pole
 O
 X
 < 47°

INDEXED

Lot I.

Lot H.



Cross Section Bayside Loop
From Queenstown to $\frac{1}{2}$ Alley N of Seagirt 16.7 mi

Indexed c.s.k.

31
July 13-21

$\frac{1}{2}$ Stationing	4.01	Hl Bl Ford From 29	
TP	4.76	3.54	5.23 -1.22
TP	4.04	3.35	4.23 -0.69
	$\frac{1}{2}$ Queenstown		
F		4.1	-1.0
$\frac{1}{2}$		4.5	-1.1
H		4.4	-1.0
	6.335 H = $\frac{1}{2}$ Alley Block 187		
H		4.2	-0.8
$\frac{1}{2}$		4.2	-0.8
F		4.2	-0.8
	$\frac{1}{2}$ Redonda		
F		4.2	-0.8
$\frac{1}{2}$		4.3	-0.9
H		4.2	-0.8
	6.376 H $\frac{1}{2}$ Alley Block 192		
H		4.4	-1.0
$\frac{1}{2}$		4.5	-1.1
E		4.5	-1.1
	$\frac{1}{2}$ Pickaway		
F		4.8	-1.4
$\frac{1}{2}$		4.7	-1.3
H		4.7	-1.3
	6.391 $\frac{1}{2}$ Alley Block 195		
H		4.6	-1.2
$\frac{1}{2}$		4.5	-1.1

INDEXED

Placed HEB

			3.35	
F			4.5	-1.1
			$\frac{1}{2}$ San Jose	
F			4.6	-1.2
$\frac{1}{2}$			4.6	-1.2
H			4.4	-1.0
			7.11 H = $\frac{1}{2}$ Alley Block 200	
H			4.5	-1.1
$\frac{1}{2}$			4.6	-1.2
F			4.8	-1.4
			$\frac{1}{2}$ Salem	
F			4.8	-1.4
$\frac{1}{2}$			4.7	-1.3
H			4.6	-1.2
			$\frac{1}{2}$ Alley Block 203	
H			4.4	-1.0
$\frac{1}{2}$			4.5	-1.1
F			4.6	-1.2
			$\frac{1}{2}$ Seagirt	
F			4.7	-1.3
$\frac{1}{2}$			4.6	-1.2
H			4.7	-1.3
			$\frac{1}{2}$ Alley N of Seagirt	
H			4.6	-1.2
$\frac{1}{2}$			4.6	-1.2
F			4.6	-1.2

3.35
4.69
-1.21 = TP

Cross Sect 107 Strand Way
 2 Seagirt to 2 Toulon

20/11/68

SMBP
 Sun Sat &
 Station

BM	433	1141	7.08
TP	472	1068	5.45
		2 Seagirt = 0+0	
M		48	5.9
2		47	6.0
F		47	6.0
		0+50 = 2 Conc Apron on M	
M		480	5.88
		0+129 = 2 Alley Block 207	
M		48	5.9
2		49	5.8
F		50	5.7
		0+75 = 2 Garage Conc Floor on F	
F = Conc Floor		500	5.68
		0+79 = 2 De Garage Conc Floor on M	
M = Conc Floor		473	5.95
		1+25.85 = 2 Sunset	
M		47	6.0
2		48	5.9
F		49	5.8
		20 M of 2 Sunset = 2 Garage on M of WL	
4 M of M-L Conc Floor		49	5.8
		50 M of 2 Sunset = 2 Garage on East	
E.L. = Conc Floor		459	6.09

INDEXED

Plotted MB

Indexed c.s.k.

1068

32
 7-13-81

		2 Alley Block 212	
F		47	6.0
2		47	6.0
M		48	5.9
		15 M of 2 Alley Block 212 = 2 Garage on F	
F = Conc Apron		444	6.24
		2 Tangiers	
M		49	5.8
2		49	5.8
F		49	5.8
		2 Alley Block 215	
F		49	5.8
2		49	5.8
M		49	5.8
		2 Toulon	
M		51	5.6
2		50	5.7
F		50	5.7

Cross Section Ormond Court
Ocean Front Walk - Boardwalk

10' Wide

Station 179

BM	172	891	719	B.P. Top of Walk Santa Clara
				12' N of East Line of Ocean Walk = E of Cove Walk
N	07	421	9.70	
S	"	422	9.69	
				East Line Ocean Front Walk = 0+0
S		45	9.91	
N		46	9.31	
				0+40
N		45	9.41	
S		42	9.71	
				0+80 = W.L. Strand May 20' Wide
S		36	5.31	
N		39	5.01	
				0+100 = E.L. Strand May = E End of Boardwalk
N		39	5.00	
+1	-	390	5.00	W Edge Boardwalk
+9	-	390	5.00	"
S		39	5.00	
				0+155 = E 4 Boardwalk on S
S	07	608	2.83	Walk
+1	"	608	2.83	"
+9	"	608	2.83	"
N		61	2.81	"

INDEXED

Plotted
B.M.

Indexed c.s.k.

891

				0+722 = E 2' Cove Walk on N
N	07	745	1.46	Cove Walk
+1	07	746	1.45	Board "
+9	"	745	1.46	" "
S		8.0	.91	
				0+882 = E 4' Cove Walk on N
S		85	.41	
+1	07	804	.87	Board Walk
+9	"	807	.84	" "
N		805	.86	Cove "
				1+038 = E 2' Cove Walk on N
N	07	850	.41	Cove Walk
+1	07	850	.41	Board "
+9	"	845	.46	" "
S		8.7	.21	
				1+3257 = W.L. Mission Blvd = E End on Walk
S		88	.11	
+1	07	880	.11	Board Walk
+9	"	890	.01	" "
N				
				1+3507 = W Edge Cove Walk
N	07	876	.15	Cove Walk
S		876	.15	"
TP	833	247	877	.14

53
7-14-31
Moore
Singer
Northrup

C.T. Ormond
W.L. Mission Blvd

347

22 H of E.L. Mission Blvd: E.L. Core Walk

S of Core Walk 379 -.32

H " " 382 -.35

E.L. Mission Blvd = 0+0 = Mid of Board Walk

H 430 -.83

+1 = Edge Board Walk 389 -.42

+9 " " 398 -.51

S " " 42 -.73

0+12.4 = 2 3 Board Walk on S

S of Board Walk 420 -.73

+1 " " 420 -.73

+9 " " 408 -.61

H " " 41 -.63

0+35.8 = 2 33 Tile Walk on S

H 44 -.93

+1 Board Walk 437 -.90

+9 " " 438 -.91

S of Tile " 431 -.91

0+51.2 = 2 3 Br. Walk on S

S 46 -1.13

+1 of Board Walk 412 -1.15

+9 " " 459 -1.12

H of " " 459 -1.12

0+76.5 = 2 3 Board Walk on S

H of Board Walk 432 -1.35

+1 " " 467 -1.20

347

34

+9 of Board Walk 477 -1.30

S " " 50 -1.53

0+87.5 = E.L. 2 Br. Walk on S + E.L. 4 Br. Walk on S

S of Board Walk 490 -1.43

+1 " " 490 -1.43

+9 " " 487 -1.40

H " " 490 -1.43

1+08.3 = 2 4 Board Walk on S

H 51 -2.13

+1 of Board Walk 502 -1.55

+9 " " 506 -1.59

S " " 506 -1.59

1+31.5 = 2 4 Board Walk on S

S of Ground 52 -2.43

S of Board Walk 506 -1.59

+1 " " 506 -1.59

+9 " " 502 -1.55

H " " 58 -2.33

1+44.8 = 2 2 Board Walk on S = Mid 4 Br. Walk on S

H 59 -2.43

+1 of Board Walk 505 -1.58

+9 " " 508 -1.61

S " " 508 -1.61

S Ground 59 -2.43

1+49.5 = E.L. 2 Board Walk on S

S Ground 58 -2.33

+1 of Board Walk 514 -1.67

+9	07 Beard Walk	5.05	-1.58
H	" " "	5.05	-1.58
H	Ground	5.9	-2.43
	1+54 = H.L. 3 Beard Walk or H.L. 4 Beard Walk		
H	" " "	5.9	-2.43
+1	07 Beard Walk	5.06	-1.59
+9	" " "	5.17	-1.70
S	" " "	5.17	-1.70
S	Ground	5.8	-2.33
	1+72 = 4 Beard Walk or H		
S	" " "	5.8	-2.33
+1	07 Beard Walk	5.20	-1.73
+9	" " "	5.11	-1.64
H	" " "	5.11	-1.64
H	07 Ground	6.1	-2.63
	1+90.8 = 3 Beard Walk or H		
H	" " "	6.1	-2.63
H	07 Beard Walk	5.8	-1.65
+1	" " "	5.12	-1.65
+9	" " "	5.21	-1.74
S	" " "	5.8	-2.33
	2+35 = 3 Beard Walk or H		
S	" " "	5.1	-1.63
+1	07 Beard Walk	5.01	-1.54
+9	" " "	5.00	-1.53
H	" " "	5.00	-1.53

H	Ground	5.90	-2.43
	2+48.33 = H.L. Bay side Lane - End Beard Walk		
H	" " "	4.90	-1.43
+1	07 Beard Walk	4.90	-1.43
+9	" " "	4.95	-1.48
S	" " "	5.0	-1.53
	0+0 E.L. Bay side Lane = H End 8 Beard Walk		
S	" " "	4.8	-1.33
+1	07 Beard Walk	4.77	-1.30
+9	" " "	4.85	-1.38
H	" " "	4.9	-1.43
	0+30.7 = 2 Beard Walk or H		
H	" " "	5.0	-1.53
+1	07 Beard Walk	4.61	-1.19
+9	" " "	4.69	-1.22
S	" " "	4.69	-1.22
	0+50		
S	" " "	4.4	-0.93
+1	07 Beard Walk	4.40	-0.93
+9	" " "	4.36	-0.89
H	" " "	4.6	-1.13
	0+81.22 = H.L. Bay side Walk		
H	Ground	4.5	-1.03
+1	07 Beard Walk	3.90	-0.43
+9	" " "	3.93	-0.46
S	07 Ground	5.0	-1.53

Cross Section Bay Side Lane
 San Juan Place to Santa Clara 16' wide
 See Map and the Point Book 25
 For Stationing

Indexed c.s.k.

	347		
TP	500	337	510 -1.63
	San Juan Place		
H			51 -1.73
F			50 -1.63
	Alley Block 160		
F			51 -1.73
H			51 -1.73
	Newport Court		
H			51 -1.73
F			50 -1.63
	Alley Block 163		
F			50 -1.63
H			50 -1.63
	Ormond		
H			49 -1.53
F			48 -1.43
	Alley Block 168		
F			44 -1.03
H			42 -.83
	Ostend		
H			45 -1.13
F			45 -1.13
	Alley Block 171		
F			42 -.83
H			41 -.73

INDEXED

Plotter AFB

337
 Santa Clara

H			40	-1.63	
F			40	-1.63	
TP	1014	934	417	-0.80	
BM			221	7.13	BP Santa Clara Block 7.13

INDEXED

Grass Section O Strand Court Indexed c.s.k.
Ocean Front Walk to Strand Way

Existing 5/8 Conc Walk North of 1/2 Court

BM 1.90 9.09 7.19 8 P. J. Hall
Date Close

12 W of East Line Ocean Walk - 1/4 of Conc Walk

1/2 of 5 Conc Walk 1.25 W of 1/2 Court 4.41 4.68

at 0 Fast Line Ocean Walk

1/2 of 5 Conc Walk 1.23 W of 1/2 Court 4.28 4.81

R.V. Hub 6.23 W of 1/2 Court

INDEXED

0140

1/2 of 5 Conc Walk 1.07 W of 1/2 Court 3.89 5.20

Sty Tile Wall 6.07 W of 1/2 Court

0180 - N. L. Strand Way

1/2 of 5 Conc Walk 9.3 W of 1/2 Court 3.48 5.61

R.V. Hub 5.92 W of 1/2 Court

0180.5 - East End of 5 Conc Walk

TP 4.44 10.04 3.49 5.60

Plotted
H.E.B

10.04

Stationing

0+0 of San Juan Place

INDEXED

F	18	5.24
M	46	5.44
	0+88 = 2 Door Garage on W	
M	410	5.94
	¹⁴⁰⁰ 0+96 = 2 Alley	
M	41	5.94
F	42	5.84
	1+06 = 2 3 Door Garage on W Conc Floor	
	-1.6 on Conc Floor	3.47 6.57
M	on Conc Floor	3.77 6.27
	1+94.35 = 2 Alley post	
F	49	5.14
M	49	5.14
	2+75.3 = 2 Do Garage Conc Floor on W	
	3' W of W.L. on Conc Floor	4.81 5.23
	2+81.33 = 2 Alley	
M	47	5.34
F	47	5.34
	3+82.51 = 2 Ormond	
F	50	5.04
M	49	5.14
	4+76.49 = 2 Alley	
M	49	5.14
F	48	5.24

5+30.5 = 2 3 Door Garage on W

	2' W of W.L. Conc Floor	4.50 5.54
	5+70.51 = 2 Ormond	
F	45	5.54
M	47	5.34
M	on Top Conc Walk	4.41 5.63
TP	6.45 12.05	4.44 5.60
	6+09.5 = 2 4 Door Garage on W	
	1' W of W.L. on Conc Floor	6.43 5.62
	6+64.49 = 2 Alley	
M	5.8	6.25
F	5.7	6.35
	7+67.51 = 2 Santa Clara	
F	50	7.05
M	48	7.25
BM	4.88	7.17

Note: This Garage Floor Joint is to be finished by Grade Conting.

Santa Clara + San Hill 7.19

Plotted
7/15/31
AEB

Cross Section of Ostend Cr. 10' wide
 E. STA. Strandway to Bay Side Walk

Top Cem Walk 1.03 6.64 5.61 page 37 1.700

EL Strandway = 0.0

S		1.2	5.2
+ 0.6	S edge board walk	1.2	5.42
N		1.3	5.3
+ 0.7	N " " "	1.3	5.3

INDEXED

0+45			
N - 0.6	2' wide board walk	3.05	3.59
N + 9.4	S edge board walk	3.0	3.62
S	on ground	3.3	3.3

0+61			
S	w/line cem. lawn	3.44	3.20
S + 0.9	edge board walk	3.44	3.20
N		3.45	3.09
+ 0.5	" " "	3.45	3.09
"	" on ground	4.0	2.6

0+78.5			
N - 0.5	2' wide Cem walk	4.11	2.53
N	B. walk	4.11	2.53
+ 9.6	" " "	4.04	2.60
S	on Cem Lawn	4.04	2.60

0+87			
S	2' cem walk 3' wide	4.42	2.22
N		4.5	2.1
+ 0.5	N edge board walk	4.6	2.0

Plotted 11-15-31

6.62

11/30/31
 1960
 39

- 0.5		5.06	1.58
N	edge board walk	5.06	1.58
+ 9.6	" " "	5.0	1.6
S	ground	5.0	1.6
1+25			

0		5.8	0.8
+ 0.4	edge board walk	5.73	0.91
N		5.65	0.99
N + 0.5	" " "	5.65	0.99
1+55.27	= W L Mission		

N	edge board walk	6.45	0.19
0		6.42	0.22
1+55.27 + 2.5			
S	w edge cem walk	6.45	0.19
N		6.44	0.20

EL. - 4.5 - east	edge cem sidewalk		
N		6.97	-0.35
S		6.93	-0.29

EL Mission = 0.0			
S	ground	7.5	-0.9
S	edge board walk	7.4	-0.6
N	" " "	7.4	-0.6

0+38			
N	on ground	6.4	-1.6
N	edge walk	7.78	-1.14

664

S	2' wide Cem walk	7.7	-1.1	
	0+6°			
S	ground	8.3	-1.7	
S	edge bd. walk	7.9	-1.3	
N	"	7.88	-1.24	
N	on ground	8.2	-1.6	
T.P.	4.95	3.43	8.16	-1.52
	0+9.5	#1343		
N	ground	5.4	-2.0	
N	board walk	4.96	-1.51	
S	2' wide Cem walk	4.98	-1.55	
	1+03.5			
S	ground	5.3	-1.9	
S	board walk	4.98	-1.55	
N	2' wide board walk	5.00	-1.57	
	1+08.5			
N	ground	5.3	-1.9	
N	board walk	4.98	-1.55	
S	2' wide Cem walk	5.05	-1.62	
	1+36			
S	edge board walk	4.91	-1.48	
N	2' wide board walk	4.92	-1.49	
	1+50			
N	edge board walk	4.92	-1.49	
S	3' wide Cem "	4.91	-1.48	

343

Ostrand Cr 40

	1759		
S	board walk	4.87	-1.44
N	2' wide brick walk	4.90	-1.47
	1+72		
N	edge board walk	4.95	-1.52
S	2' wide "	4.89	-1.46
	1+84		
S	edge board walk	4.82	-1.39
N	2' wide "	4.84	-1.41
	2+08		
N	edge board walk	4.75	-1.42
S	2' wide Cem "	4.80	-1.47
	2+16		
S	board walk	4.70	-1.37
N	2' wide Cem walk	4.67	-1.24
	2+29		
N	1.5' wide Cem walk	4.64	-1.21
S	board walk	4.66	-1.23
	2+56.43 = wL Bayside Lane		
S	board walk	4.57	-1.14
N	"	4.54	-1.11
	EL Bayside Lane = 00		
N	"	4.43	-1.00
+0.8	board walk	4.37	-0.94
S	"	4.42	-0.99
+0.8	"	4.42	-0.99

0+29

S edge board walk 4.33 -0.90

N 1/2 wide r " 4.40 -0.97

0+63

N 1/2 4' wide cem walk 4.10 -0.67

S edge board walk 4.13 -0.70

0+80.57 - w L Boyside walk

S top board walk 4.00 -0.57

N " " " 3.98 -0.55

TP 7.46 9.37 1.5ⁿ 1.91

SWBP 7.20 7.17 7.19 seam/

0.0ⁿ seam/clerk
error

ESTA. Cross Section of Nantasket Ct. 10' wide
 Ocean Front Walk to Bay Side Walk

WNBP	2.31	9.38	7.07	Ocean Front San Juan Pt.
	-12 = east edge sidewalk			
N	ceem walk	4.73	4.65	
S	" "	4.75	4.63	
	EL ocean front walk = 00			
U	edge bd. walk	4.6	4.8	
N	" "	4.65	4.73	
	0+40			
N	edge bd. walk	4.46	4.92	
S	" "	4.46	4.92	
	0+80 = WIL strandway			
U	edge bd. walk	4.26	5.02	
N	" "	4.26	5.12	
	EL strandway = 00			
N	edge bd. walk	3.96	5.42	
S	" "	4.13	5.25	
	0+40.95			
S	edge bd. walk	6.73	2.63	
N	" " "	6.75	2.63	
	0+80.97 = WIL Mission			
N	edge bd. walk	9.25	0.13	
S	" "	9.28	0.10	
	25' E = wedge ceem walk			
S	" "	9.20	0.18	
N	" "	9.25	0.13	
T.P.	2.96	2.57	9.77	-0.39

INDEXED

Potted AFB
 8-9-31

2.57

42

	EL Mission - 2.5			HT 257
N	Top ceem walk	2.95	-0.41	
S	" " "	3.00	-0.43	
	EL Mission - 15			
N	Top of Court = M.H.	2.97	-0.40	
	EL Mission = 00			
S	Top edge bd. walk	3.05	-0.48	
N	" " "	2.96	-0.39	
	0+10			
N	edge bd. walk	3.14	-0.57	.80
S	" " "	3.23	-0.66	80.97
S	2 3' wide bd. walk	2.67	-0.10	180.96
	0+19			
S	edge bd. walk	3.34	-0.77	16.25
N	" " "	3.20	-0.63	81.76
N	2 9' wide bd. walk	2.65	-0.08	
	0+50			
N	edge bd. walk	3.90	-1.33	
U	" " "	3.85	-1.28	
	0+75			
S	edge bd. walk	4.17	-1.60	
N	" " "	4.18	-1.61	
N	2 3' wide bd. walk	4.00	-1.43	
	0+89.5			
N	2 2' wide bd. walk	4.03	-1.46	
N	edge bd. walk	4.23	-1.66	
S	" " "	4.21	-1.64	

1700
 S edge bd walk 4.29 -1.72
 N " " 4.37 -1.80

1735
 N 4' wide Cent walk 4.50 -1.93
 S edge bd walk 4.41 -1.84
 S ground 4.8 -2.2

1769.78 - WL Bayside Lane
 S edge bd walk 4.73 -2.16
 N " " 4.66 -2.09

FL Bayside = 00
 N edge bd walk 4.78 -2.21
 S " " " 4.77 -2.20

0 + 4.87
 S edge bd walk 3.93 -1.36
 S ground 4.6 -2.0

N edge bd walk 4.02 -1.45
 N ground 4.6 -2.0
 0 + 81.74 = WL Bayside walk

N ground 3.1 -0.6
 N Top walk 2.7ⁿ -0.15
 S " " 2.67 -0.10
 S ground 3.1 -0.50

180.96
 11.18
 169.78

± STA	2.57	INDEXED	
	± San Juan Pl = 00		
W	4.3	-1.7	
C	4.3	-1.7	
E	4.4	-1.6	
	0712.2 = SL San Juan Pl		
E	4.5	-1.9	
C	4.5	-1.9	
W	4.5	-1.9	
	0775		
W	4.8	-2.2	
C	4.6	-2.0	
E	4.8	-2.2	
+v	± Cem Garage floor	4.67	-2.10
	170 ~ ± alley		
E	4.8	-2.2	
C	4.6	-2.0	
W	4.7	-2.1	
	1710		
W	4.6	-2.0	
C	4.6	-2.0	
E + 0v	Cem apron	5.00	-2.43
+ 04	" Garage floor	4.40	-1.83
	1750		
E	5.1	-2.5	
C	4.8	-2.2	
W	5.2	-2.6	

Plotted FEB 8-7-31

±	1797.2	± Nantasket Cr	
W	ground	4.8	-2.2
C	"	4.8	-2.2
E	"	4.8	-2.2
	2+40		
E		3.0	-2.4
C		4.9	-2.3
W		5.0	-2.4
	2+70		
W		4.7	-2.1
C		4.7	-2.1
E		4.7	-2.1
E + v	Cem apron	4.70	-2.13
	2+90 approx ± alley		
E		4.8	-2.2
C		4.7	-2.1
W		4.5	-1.9
	3+00		
W		4.7	-2.1
C		4.6	-2.0
E		4.8	-2.2
+v	Cem apron	4.84	-2.27
	3+45		
E		4.7	-2.1
C		4.5	-1.9
W		4.7	-2.1

Garage

Garage

257

3787 approx $\frac{1}{2}$ Nabont CT

H		4.5	-1.9
C		4.5	-1.9
E		4.5	-1.9

4700

E		4.6	-2.0
C		4.5	-1.9
W		4.6	-2.0

4730

W		4.7	-2.1
C		4.5	-1.9
E		4.6	-2.0

+4	Cent apron	4.30	-1.77	Carage
----	------------	------	-------	--------

4781 approx $\frac{1}{2}$ alley

E		4.50	-2.4
C		4.3	-1.7
W		4.4	-1.8

T.P.	9.60	9.21	2.96	-0.39
------	------	------	------	-------

San Juan Pl		2.12	7.07	7.07 DF
-------------	--	------	------	---------

Gross Section Strand Way
 SL Block 389 Pacific Beach to SL Pacific Ridge Blvd

For Sketch See
 1429 Page 3

6.13 H. Ford From 1489 Paper

SL Block 389 Pacific Beach

W	07 Paving	493	1.50
L	"	548	0.95
F	"	542	1.01

INDEXED

25' H			
F	07 Paving	520	1.23
L	"	529	1.14
W	"	476	1.67

50' H			
W	07 Paving	456	1.87
L	"	507	1.36
F	"	491	1.52

75' H			
L	07 Paving	462	1.81
L	"	486	1.57
W	"	448	1.95

100' H			
W	07 Paving	420	2.23
L	"	463	1.80
F	"	444	1.99

125' H - SL End of Paving			
F	07 Paving	417	2.26
L	"	442	2.01
W	"	404	2.39

149-43/46
 Moore
 Dixon
 Harbison

145' H - N. End of Paving

W	07 Paving	396	2.47
L	"	434	2.09
F	"	410	2.33

175' H			
F	07 Paving	398	2.45
L	"	417	2.26
W	"	375	2.68

200' H			
W	07 Paving	357	2.86
L	"	397	2.46
F	"	381	2.62

225' H			
F	07 Paving	360	2.83
L	"	374	2.69
W	"	330	3.13

270' H - N End of Paving			
W	"	300	3.43
L	"	346	2.97
F	"	327	3.16

Cross Section Hill/Block 389 Pacific Beach
 Strand Hwy to Mission Blvd 20 yds

INDEXED

11	603	0.40
7	645	-0.02
5 on Paving	612	0.31
125 I		
5	593	0.70
7	607	0.36
11 on Paving	571	0.72
150 I		
11	581	1.12
7	575	0.78
5 on Paving	584	1.09
95 I		
5	500	1.43
7	526	1.17
11 on Paving	496	1.47
50 I		
11	450	1.93
7	486	1.57
5 on Paving	459	1.84
25 I of F.S. road Proj.		
5	416	2.27
7	416	2.27
11 on Paving	411	2.32

F.S. Strand Hwy
 643

BM

150 I		
11 on Paving	651	-0.08
7	686	-0.43
5	651	-0.08
17395 I		
5 on Paving	688	-0.45
7	721	-0.78
11	688	-0.45
200 I		
11 on Paving	738	-0.85
7	761	-1.18
5	787	-0.84
23988 I - M.K. Mission Blvd		
5 on Paving	771	-1.28
5	792	-1.29
7	804	-1.61
11	785	-1.42
11 on Paving	784	-1.41
11 on Paving of Mission		
11 on Paving	865	-2.22
7	863	-2.20
5	859	-2.16
11	803	-1.60
5 on Paving	594	0.84
Grading SM. Cor Pacific Beach Mission Blvd	635	-2.51

1
 NE & P
 Pacific Beach
 Mission Blvd
 -193

Cross Section Strandway
San Juan to Alley South of Nantasket

25 Wide

BM	303	1010	707	JHBP San Juan + Seawall
	2 San Juan			
W		45	5.6	
L	INDEXED	47	5.4	
I		48	5.3	
	12 S of 2 San Juan			
I		49	5.2	
L		48	5.3	
W		47	5.4	
	50 S of 2 San Juan			
W		48	5.3	
L		46	5.5	
I		49	5.2	
	90 S			
I		48	5.3	
L		46	5.5	
W		47	5.4	
+4	2 Garage Conc Floor	490	5.40	
	100 S - 2 Alley			
W		47	5.4	
L	on MH Cover	453	5.57	
I		48	5.3	
	148 S			
I		50	5.1	
L		49	5.2	

48
Aug. 1-31
Moore

	1010		
W = Conc Apron	487	5.23	
	192.95 - 2 Nantasket		
W	52	4.9	
L	52	4.9	
I	52	4.9	
	245 S		
I	52	4.9	
L	51	5.0	
W	52	4.9	
+2	2 Garage Dirt Floor	52	4.9
	286 S		
W = 2 Garage Conc	490	5.20	
L	490	5.20	
I	51	5.0	
	300 S		
I on Conc Cb	502	5.08	
L	52	4.9	
W	51	5.0	
TP	443 957	496	5.14
	342 S		
W	48	4.8	
L	47	4.9	
I	46	5.0	
I on Conc Cb	443	5.14	

9.57

373755 = N.2. Nantonal

F 0206 = SF21 436 5.21

F 46 5.0

S 46 5.0

W 47 4.9

1005

W 47 4.9

S 45 5.1

F 47 4.9

1725 = S Alley

F 47 4.9

S 44 5.2

W 47 4.9

RM For Check 246 7.11

BP
El Garmel
Sea Wall

49

760

Cross Section Liverpool Court
Mission Blvd to Ocean Front Walk

W of Side

L 832
West
5350
Northern

Stationing INDEFD

BM	229	938	709	537.84 E/Cornwall Pl 4 Sea Wall
				-35' W of Edge Case Walk Mission Blvd
S	02 Case Walk	781	1.54	
L	"	783	1.55	
H	"	780	1.58	
				W of Line of Mission Blvd - Edge Board Walk
H		78	1.6	
L		80	1.4	
S		79	1.5	
				113' W - E.L. Strand Walk - W of Board Walk
S		46	4.8	
L		46	4.8	
H		45	4.9	
				W Strand Walk
H		46	4.8	
L		46	4.8	
S		46	4.5	
				W.L. Strand Walk - Edge Board Walk
S	Top Board Walk	400	5.38	
S		45	4.9	
L		45	4.9	
H		44	5.0	
H	Top Board Walk	415	5.23	
				10' W of W.L. Mission Blvd
S		48	4.6	
L	-Top Walk	425	5.13	

H	Ground & Board Walk	430	5.08	
				45' W of W.L. Mission Blvd. Entrance to Deck House
H	Top Board Walk	424	5.14	
				68' W - End of Board Walk
H	Top Board	390	5.48	
L	"	390	5.48	
S	"	380	5.58	
				80' W - E.L. Ocean Front Walk
S		49	4.5	
L		50	4.4	
H		49	4.5	
				13' W - Edge Case Walk on Ocean Front Walk
L	02 Case Walk	482	4.56	
L	"	480	4.58	
S	"	476	4.62	
TP	463	9.61	4.40	4.98
				14' W of W.L. Liverpool - E. Dr. George Case Pier
S	W of W.L. Strand Walk	447	4.91	

Cross Section Hobart Court
Ocean Front Walk to Bayside Walk

intended
c/sk 16' wide

9.18

Oct 21/32
Moore
S. H. 102
Hartberg

51

Station	Date	East of Beach	West of Beach	Notes
B.M.	3.11	9.18	7.07	24' Conc Walk
				12' W of E.L. Ocean Front Walk - Fly Conc Walk
N		4.57	4.61	
L		4.57	4.61	
S		4.59	4.59	
				E.L. Ocean Front Walk
S		4.6	4.6	
L		4.9	4.3	
N		5.2	4.0	
				40' E of E.L. Ocean Front Walk
N		4.5	4.7	
L		4.7	4.5	
S		4.8	4.4	
				80' E = W.L. Strand Way
S		4.3	4.9	
L		4.3	4.9	
N		4.3	4.9	
				E.L. Strand Way
N		3.99	5.19	
L		4.1	5.1	
S		4.1	5.1	
				16' E of E.L. Strand Way
S		5.2	4.0	
L		5.2	4.0	
N		5.03	4.15	

INDEXED

Station	Date	East of Beach	West of Beach	Notes
				28' E
				24' Conc Walk
				12' W of E.L. Ocean Front Walk - Fly Conc Walk
				6.56' E = W.L. Mission Blvd
				6.81' E = W.L. Edger Conc Walk
				2.5' W of E.L. Mission Blvd - Fly Edger Conc Walk
				3.65 3.77
				E.L. Mission Blvd
				12' E of E.L. Mission Blvd

B.M.
N
L
S
S
L
N
L
S
S
L
N
L
S
L
N

N
L
S
N
L
S
N
L
S
L
N
L
S
L
N

2.00
3.18
6.0
3.2
6.0
3.2
8.6
0.6
8.5
0.7
8.5
0.7
8.52
0.66
8.52
0.66
8.50
0.68
8.46
0.72
3.70
0.07
3.70
0.07
3.72
0.05
4.0
-0.2
3.8
-0.0
3.9
-0.1
4.52
-0.75
4.6
-0.83
4.6
-0.8

377
 61' E of E.L. Mission 2 B

H		48	-1.0
L		47	-0.9
S	L 21' Conc Walk	478	-1.01
	74' E		
S	L 5' Conc Walk	483	-1.04
L		49	-1.1
H		484	-1.07
	76' E		
H	L 4' Conc Walk	485	-1.08
	85' E		
H	L 3' Conc Walk	487	-1.10
	100' E		
H		51	-1.3
L		50	-1.2
S		52	-1.4
	143.66' E = 111' Bay Side Lane		
S	Top Board Walk	54	-1.6
S	Ground	58	-2.0
L	Top Walk	54	-1.5
L	Ground	58	-2.0
H	Top Walk	535	-1.58
H	Ground	57	-1.9

377
 E.L. Bay side Lane

52

H	Top Board Walk	530	-1.53
H	Ground	58	-2.0
L	"	58	-2.0
L	Top Walk	535	-1.58
S	"	540	-1.63
S	Ground	58	-2.0
	15' E of E.L. Bay side Lane		
S	L 4' Conc Walk	525	-1.48
L		52	-1.5
H		54	-1.6
	4087' E		
H		55	-1.7
L	07' Walk	51	-1.3
S		52	-1.4
	8174' E = 111' Bay side Lane		
S	Ground	50	-1.2
S	Top Board Walk	472	-0.95
L	"	478	-1.01
H	"	478	-1.01
H	Ground	51	-1.3
TP		214	1.63

Occas Front Walk to Bayside Walk 10' wide

995

Stat name Note: Existing Board Walk From Occas Front Walk to Bay Side Walk

10' E of E.L. Strand Way

BM 2.88 995 7.07 S = 4' Board Walk 523 4.72

12' W of E.L. Occas Front Walk Fly Edge Road Walk

S on Case Walk 5.28 4.67 L 5.3 4.7

L " " 5.28 4.67 H 5.27 4.68

H " " 5.28 4.67 H = 2' Board Walk 5.4 4.6

E.L. Occas Front Walk

H INDYFD 5.4 4.6 L 5.1 4.4

L 5.5 4.5 S 5.1 4.4

S 5.7 4.3 S 6.3 3.7

40' E of E.L. Occas Front Walk

S 5.7 4.3 L 6.3 3.2

L 5.6 4.4 H = 2' Board Walk Ground 6.2 3.8

H 5.3 4.7 H on " 5.7 4.3

62' E of E.L. Occas Front Walk

H = 4' Case Walk 4.86 5.09 H = 4' Board Walk 7.05 2.90

L 5.2 4.8 L 7.3 2.7

S 5.4 4.6 S 7.3 2.7

80' E = W.L. Strand Way

S 4.9 5.1 S = 4' Board Walk 7.75 2.20

L 4.9 5.1 L 7.7 2.3

H 4.9 5.1 H 7.7 2.3

E.L. Strand Way

H 4.8 5.2 H 9.4 0.6

L 4.8 5.2 L 9.4 0.6

S 4.8 5.2 S 9.4 0.6

9.95

113.3 F = 1/2 Mississ Blvd.

S		99	+0.1
L		10.0	00
H		10.0	00

115.8 F = 1/4 of Conc Walk

H	07	Conc Walk	970	+0.25
L	"	"	970	+0.25
S	"	"	974	+0.21
TP	240	2.79	956	0.39

2.5 M of E.L. Mississ Blvd = Fly Conc Walk

S	07	Conc Walk	3.13	-0.34
L	"	"	3.13	-0.34
H	"	"	3.11	-0.32

E.L. Mississ Blvd

H	07	Board Walk	3.25	-0.46
L	"	"	3.25	-0.46
S	"	"	2.3	-0.5

40 F of E.L. Mississ Blvd

S		39	-1.1
L		39	-1.1
H		42	-1.3

60 F

H		43	-1.4
L		42	-1.3
S	1/4 of Board Walk	42	-1.3

2.79

80 F

S	= Fly Board Walk	41	-1.8
L		43	-1.5
H	Top Walk	43	-1.5
H	Ground	48	-2.0

100 F

H		44	-1.6
L		44	-1.6
S		44	-1.6

109 F

S		45	-1.7
L		44	-1.6
H	1/3 Conc Walk	440	-1.61

125 F

H		47	-1.9
L		45	-1.7
S	1/3 Board Walk	44	-1.6

150 F

S		50	-2.2
L		45	-1.6
H		50	-2.2

183 F

H		50	-2.2
L		44	-1.6
S	= 1/3 Board Walk	435	-1.56
S	Ground	46	-1.8

54

198 F

S	4.4	-1.6
L	1.3	-1.5
H = L Board Walk	4.4	-1.6
H Ground	4.9	-2.1

225.49 F = HL Boyside Lane

H	4.4	-1.6
L	1.6	-1.8
S	1.6	-1.8

FL Boyside Lane

S	4.4	-1.6
L	4.4	-1.6
H	4.4	-1.6

41 F of FL Boyside Lane

H	4.2	-1.4
H Top Walk	3.6	-0.8
L	3.6	-0.8
S	3.6	-0.8

82.0 F = F = HL Boyside Walk

S Ground	2.4	+0.4
S Top Board Walk	2.2	+0.6
L " " "	2.3	+0.5
H " " "	2.25	+0.74
H Ground	3.0	+0.2
TP = Same TP Page 52	1.15	1.64 = 53 1.63

Cross Section Monterey Court
Ocean Front Walk to Bay Side Walk ... 18' wide

Stationing.

BM	2.50	9.59	7.09	58.80 21' Cor. Walk + 20' Road
	12' W of E.L. Ocean Front Walk - Fly Edge Conc. Walk			
S	on Conc. Walk	5.00	4.59	
L	" " "	5.01	4.58	Note: -
H	" " "	5.03	4.56	No Board Walk But Ocean Front Walk + Strand Way
	E.L. Ocean Front Walk			
N		5.2	4.4	
S		5.2	4.4	
	10' E of E.L. Ocean Front Walk			
S		4.8	5.8	
H		4.7	4.9	
	80' E of E.L. Ocean Front Walk - W. Strand Way			
H		4.6	5.0	
S		4.3	5.3	
	1' E of W.L. Strand Way			
S		4.8	4.8	
H		4.7	4.9	
	E.L. Strand Way			
N	on Board Walk	4.30	5.29	
"	Ground	4.7	4.9	
S	" " "	4.7	4.9	
S	on Board Walk	4.37	5.32	
	7' E of E.L. Strand Way			
H	W of Conc. Walk	4.4	4.95	

INDEXED

Indexed
C.S.K.

1-28-33
Moore
Sisson
Hartman

56

9.59

11' E of E.L. Strand Way

N	W of Conc. Walk	4.90	4.69
	20' E		
H	on Board Walk	5.60	3.99
S	W of Board Walk to House	5.61	3.98
	38' E		
S	W of Board Walk to House	7.20	2.39
	50.2' E - W.L. Mission Bldg		
S	on Board Walk	8.12	1.47
H	" " "	8.11	1.48
	52.7' E - W. Edge Conc. Walk		
H	on Conc. Walk	7.98	1.61
S	" " "	7.91	1.63
	25.5' E of E.L. Mission Bldg - E. Edge Conc. Walk		
S	on Conc. Walk	8.55	1.04
H	" " "	8.56	1.03
	E.L. Mission Bldg		
H	on Board Walk	8.57	1.02
S	" " "	8.54	1.05
	6' E of E.L. Mission Bldg		
S	W of Board Walk to Ho.	8.74	0.85
H	on Board Walk	8.74	0.85
	50' E of E.L. Mission Bldg		
H	on Board Walk	9.93	-0.34
S	" " "	9.83	-0.24

9.59

91 E of FL Mission Blvd

S = 2' Board Walk to House 10.80 -1.21

N = 2' Board Walk 10.96 -1.17

109.5 E

N = 2' 3' Brick Walk 10.98 -1.39

S = 2' 3' Concrete " 11.00 -1.41

125.5 E - W.L. Bayside Lane

S = 2' Board Walk 11.06 -1.47

S = Ground 11.5 -1.9

N = " 11.5 -1.9

N = 2' Board Walk 11.20 -1.61

FL Bayside Lane

N = 2' Board Walk 11.19 -1.60

N = Ground 11.7 -2.1

S = " 11.7 -2.0

S = Board Walk 11.10 -1.51

143.5 E of FL Bayside Lane

S = 2' Board Walk 10.83 -1.24

S = Ground 11.4 -1.8

N = " 11.5 -1.9

N = 2' Board Walk 10.87 -1.28

80.70 E - W.L. Bayside Walk

N = 2' Board Walk 10.13 -0.54

N = Ground 10.6 -1.0

S = " 10.6 -1.0

S = 2' Board Walk 10.13 -0.54

57

Trans Sec 710
 Redondo CT *entire length*

INDEXED

SWBP	216	9.24	7.08	<i>San Diego Seawall</i>
	00-12 carz edge	sidewalk		
N		4.64	4.61	
J		4.65	4.59	
	0700 = El. Ocean Front	walk		
S		4.4	4.8	
C	board walk	4.4	4.8	
N	"	4.4	4.8	
N	sand	4.8	4.4	
	0410			
N	Bd. walk	4.9	5.3	
C	"	4.8	5.4	
+1	N edge Toilet	4.8	5.4	
	0450			
S		2.55	6.69	
+4	N edge Toilet	2.55	6.69	
C	Bd walk	2.55	6.69	
N		2.45	6.79	
	0780 W. Strand Way			
N	ground	1.4	7.8	
C	Bd walk	1.4	7.9	
S	ground	1.6	7.6	
T.P.	0.75	0.44	7.86	

1-21-35
Moore

58

0700 = El. Strand Way

S	ground	1.3	7.3
C	Bd walk	0.78	7.86
N		1.3	7.3
	0450		
N	ground	6.3	2.3
C	Bd walk	5.96	2.68
S	ground	6.6	2.0
	0475		
S	ground	7.2	1.4
C	Bd walk	7.16	1.48
N	ground	7.2	1.4
	1700		
N	ground	7.8	0.8
C	Bd walk	7.57	1.07
S	2 1/2 wide Bd. walk	7.60	1.04
	1720		
S	ground	8.2	0.4
C	Bd walk	7.80	0.84
N		7.80	0.84
	1730		
N	door step	7.95	0.69
C	ground	8.0	0.6
S	"	8.4	0.2

1444

S	ground	8.5	0.1
C		8.2	0.4
N	door step	7.87	0.77
	1456		
N	door step	7.90	0.74
C	ground	8.3	0.3
S		8.6	0.04
	1467		
S	door step	7.93	0.71
S	ground	8.5	0.14
C	"	8.5	0.14
N	"	8.5	0.14
	1476		
N	ground	8.6	0.04
N	Top Cone walk	8.24	0.40
C	"	8.21	0.43
S	"	8.21	0.43
S	ground	8.6	+0.04
T.P.	363 395	8.52	0.82
	0400 EL Mission Blvd.		
S	Cono. side walk	4.27	-0.32
C		4.28	-0.33
N		4.27	-0.32
	0450		
N	ground	4.5	-0.55

C	bd. walk	4.31	-0.36
S	ground	4.5	-0.55
	0480		
S		4.30	-0.35
C		4.36	-0.41
N	tile walk	4.50	-0.55
	1400		
N		5.0	-1.05
C	bd walk	4.38	-0.43
S		4.5	-0.55
	1450		
S		4.8	-0.85
C	bd walk	4.67	-0.72
N		4.7	-0.75
	1466		
N	bd walk	4.28	-0.33
C	bd walk	4.45	-0.60
S		4.9	-0.95
	1487		
S		4.9	-0.95
C	bd walk	4.58	-0.53
N		4.6	-0.65
	1494		
N	door	4.65	+0.30
	21704		
	WL Bay side Lane		
N		4.9	-0.95
C	bd walk	4.60	-0.65
S		4.8	-0.85

0700 - El Bayside Lane

S		5.0	- 1.05
C	Ad. walk	4.76	- 0.81
N		4.9	- 0.95

0710

N		4.63	- 0.68
C	Ad. walk	4.66	- 0.71
S		5.0	- 1.05

0738

S		4.6	- 0.65
C	Ad. walk	4.46	- 0.51
N		4.5	- 0.55

+v 2 door step 3.23 + 0.62

0748

N-3	3' Ad walk	4.45	- 0.50
C		4.57	- 0.42
S		4.5	- 0.55

0780 W. Bayside Walk

S	ground	4.7	- 0.75
S	Ad walk	3.94	+ 0.01
C	"	3.94	+ 0.01
N	"	3.94	+ 0.01
N	ground	4.3	- 0.35

T.P. 6.89 7.33 1.41 2.44

ch. 708M 2.24 7.09 7.08
0.01

Ocean Front Walk

0710



0750



Strandway

10'

Mission Blvd.

X Sec. Manhattan Court. 10' wide
 Ocean Front Walk. to Bayside Walk.

8-14-36
 Miller,
 Walker
 Blinn
 Northerh.

B.M. Top	2.49	9.58	7.09
B.M. Sea wall			
	00-12. = E. Edge Ocean Front Cmt. Walk		
N	cmt walk	4.98	4.60
⊕	" "	5.00	4.58
S	" "	5.01	4.57
	0+00 = E. Line O.F.W.		
S	sand	5.9	3.7
⊕	"	5.7	3.9
N	"	5.8	3.8
	0+17 INDEXED		
N	sand	5.8	3.8
⊕	"	5.9	3.7
S	"	6.0	3.6
	36" wide		
S+68=⊕	N. End. cmt. walk	4.78	4.80
	0+80 = W line Strand. Way 20' wide		
S	sand	4.5	5.1
⊕	"	4.5	5.1
N,	"	4.5	5.1
	0+82		
N	Roadway	4.8	4.7
⊕	"	4.8	4.7
S	"	4.8	4.7
	0+97.5		
S	Roadway	4.8	4.7
⊕	"	4.8	4.7
N	"	4.8	4.7

9.58
 0+98 = W. End. Board. walk = B.W.
 0+98 = Wooden Fence N. of Court. 61
 B.W. + ground 4.1 5.5

N			
⊕	" "	4.0	5.6
S	" " + ground	4.0	5.6
	1+00 = E. line Strand Way = 0+00		
S	B.W. + dirt	4.2	5.5
⊕	B.W	4.25	5.33
N	B.W + Dirt.	4.24	5.34
	0+17		
	N. on S. End ⊕ cmt. walk 36" wide		
N.	B.W.	6.06	3.52
⊕	" "	6.14	3.44
S.	" " + dirt	6.06	3.52
	0+31.48 = W Line Mission Blvd. 80' wide		
S	B.W. + dirt.	7.50	2.08
⊕	" "	7.63	1.95
N	" " + dirt.	7.54	2.00
	0+34 = Wedge cmt. Walk.		
N.	cmt. walk	7.53	2.05
⊕	" "	7.51	2.02
S	" "	7.49	2.09
T.P.	1.46	3.47	7.57
	0+60 - 2.5 = E. edge cmt. Walk		
S	cmt. walk	2.03	1.44
⊕	" "	2.05	1.42
N.	" "	2.01	1.46

		3.47	E. Line - Mission Blvd	
		0+00 =		
N.	B.W. + dirt.	2.10	1.37	
☿	" "	2.14	1.33	
S.	" "	2.05	1.42	
S	dirt	2.3	1.2	
		0+46		
S	B.W. + dirt.	3.27	0.20	
☿	" "	3.26	0.21	
N = S. End. ☿	36" wide cmt. walk	3.18	0.29	
		0+76		
N = S. End. ☿	40" wide cmt. walk	3.83	-0.36	
☿	B.W.	3.91	-0.44	
S	" "	3.95	-0.48	
S.	dirt.	4.2	-0.90	
		1+19 $\frac{1}{2}$ = E. End.	B.W.	
S	B.W. + dirt.	4.8	-1.3	
☿	" "	4.81	-1.34	
N	" " + dirt	4.8	-1.3	
		1+20 $\frac{1}{2}$ = W. Line	Bay Side Lane	16' wide.
N	Roadway.	5.1	-1.6	
☿	" "	5.1	-1.6	
S	" "	5.1	-1.6	
		1+36 $\frac{1}{2}$ = E. Line	Bay Side Lane	± 0+00
S	Roadway	5.3	-1.8	
☿	" "	5.3	-1.8	
N	" "	5.3	-1.8	

		3.47	0+01 = W. End. B.W.	
N	B.W. + dirt.	4.81	-1.34	
☿	" "	4.90	-1.43	
S	" " + dirt.	4.87	-1.40	
		0+17 $\frac{1}{2}$		
S	dirt.	4.8	-1.3	
S	B.W.	4.61	-1.14	
☿	" "	4.64	-1.21	
N = S. End. ☿	48" wide cmt. walk	4.71	-1.24	
		0+37 $\frac{1}{2}$		
N = S. End. ☿	cmt. walk. 60" wide	4.43	-0.96	
☿	B.W.	4.54	-1.02	
S.	" " + dirt.	4.54	-1.02	
		0+81 = W. Edge.	Boardwalk	on Bay Side Walk
S	B.W. + dirt.	4.20	-0.23	
☿	" "	4.18	-0.71	
N	" " + dirt.	4.14	-0.62	
T.P.	7.67	1.47	2.00	
orig. B.M.		2.58	7.09	

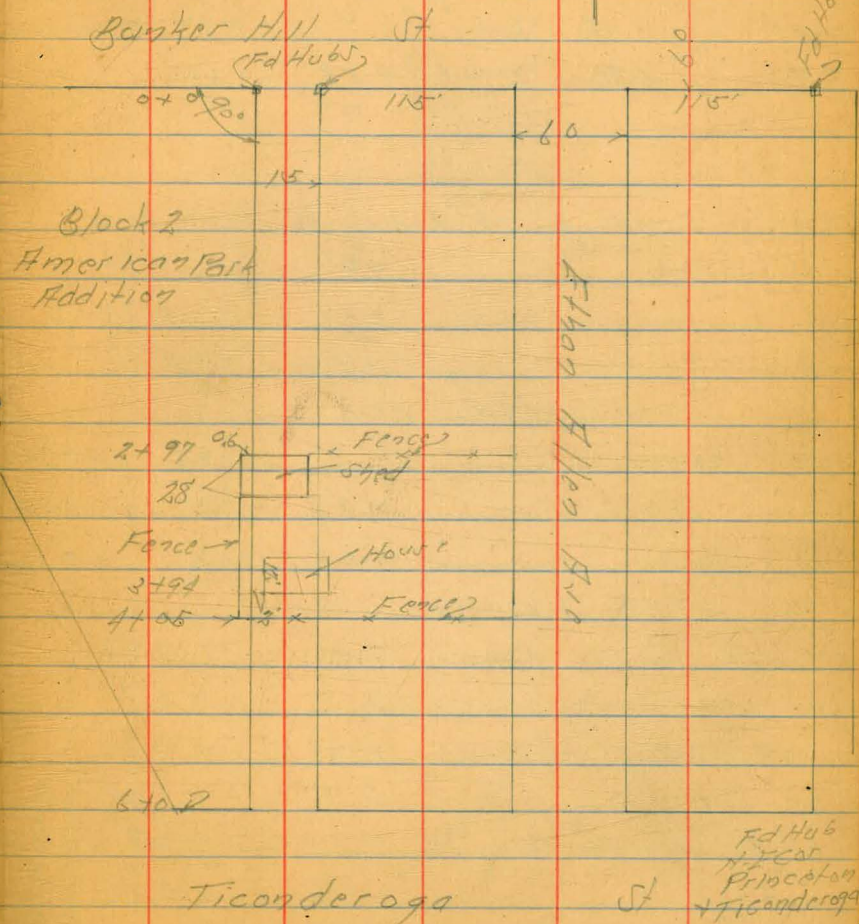
Location Alley Block 2
American Park Add.

April 6-10
Simon
Northey
H Moore

INDEXED
EFB

63

INDEXED



INDEXED
c.s.R.

INDEXED

Xsec of IC alley
Blks 186 + 187 Mission Beach
Mission Blvd. to Bayside walk

NOTE :- 9 STA.

NEBP	4.48	3.66		-0.82
T.P	4.88	3.99	4.55	-0.89

Santa Clara
Bayside Lane

0-10 E. cb. line Mission Blvd.

N	par	4.71	-	0.72
C	"	4.71	-	0.72
S	"	4.72	-	0.73

0-0.35 edge pav.

S	par	4.87	-0.88	-0.87
C	"	4.81	-0.84	-0.80
N	"	4.85	-0.86	-0.82

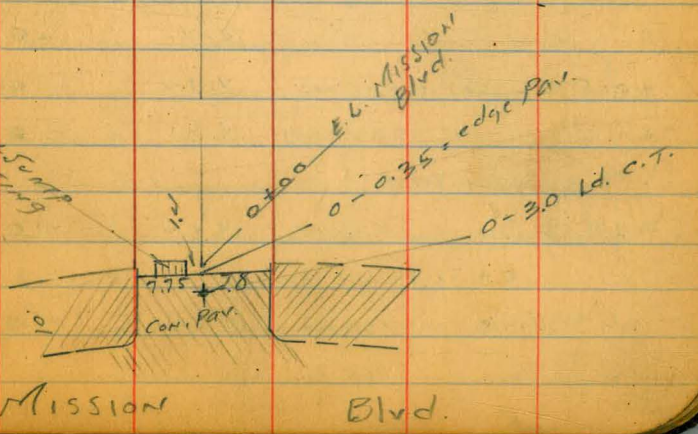
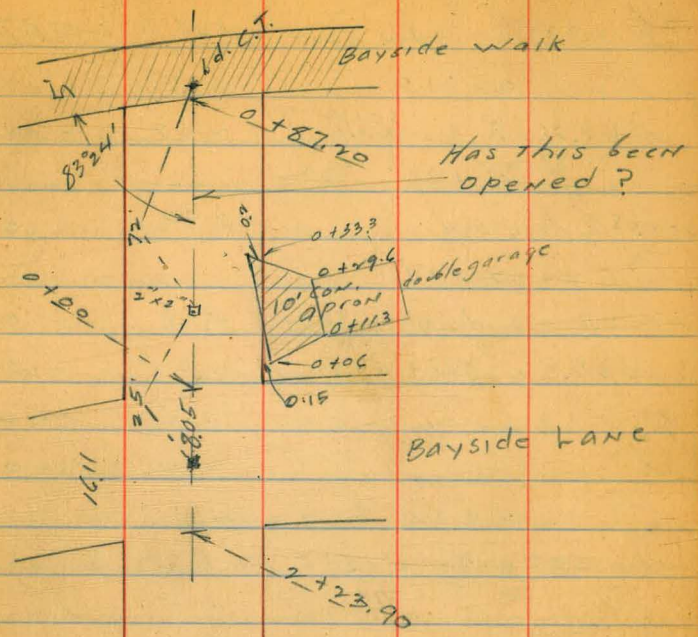
1430-19

0+0 E.L. Mission Blvd.

N	cb	San Con Bldg	4.31	-	0.32
N	dir.T.		4.7	-	0.7
	+4.5	grate of Sunp	4.84	-	0.85
C	dir.T.		5.0	-	1.00
	+7.9	dir.T. W. Con Bldg	4.7	-	0.7
S	cb		4.20	-	0.21
		0+24			
S	-0.05	Bldg	4.3	-	0.3
C			4.5	-	0.5

Reduced & plotted.
Jan. 21-1942 C.B.H.

Wood Pier
Mission Bay Yacht Club.



C + 7.95	1' E of w.l. 3" sdr. cement	4.41	-0.42	drainage on this walk
	0 + 31.5			
N + 0.05	2' 2" cement walk	4.27	-0.28	✓
	0 + 36			
S - 0.05	door sill	3.90	0.09	✓
	0 + 39			
S - 2.7	w.l. do. gar. cement	4.28	-0.29	✓
S - 0.05	1" cement apron	4.52	-0.53	✓
C		4.6	-0.6	
N		4.4	-0.4	
	0 + 35 to 0 + 70			
N - 0.35	7-6 x 8 Guard Posts = 5 edge " "			2' High
	0 + 51.5			
N - 1.8	2' 6" cement walk	4.31	-0.32	✓
	0 + 55			
N		4.4	-0.4	
C		4.7	-0.7	
S		4.4	-0.4	
+ 0.15	EL. cement apron	4.52	-0.53	✓
+ 2.6	" " garage	4.41	-0.42	✓
	0 + 70.5			
S - 3.9	2' SIM. gar. cement	4.40	-0.41	✓
	0 + 71.5			
N - 4	2' 5" cement walk	4.45	-0.26	✓

	0 + 81.5			
S + 1.3	10" P.P. ✓			
S	beg. picket fence outside			
S - 0.05	6" 2' cement walk ^{4.37} parallel with alley		-0.38	✓
	1 + 06 = 2' of 12" Ret. wall of Court			
S - 0.05	Cement Ret. wall	3.6	0.83	✓
S		4.3	-0.3	
C		4.5	-0.5	
N		4.6	-0.6	
	1 + 26.5			
N - 3.15	w.l. cement apron	4.42	-0.43	✓
N - 4.85	" do gar.	4.31	-0.32	✓
	1 + 31			
S - 0.05	end above 2' cement walk	4.37	-0.38	parallel with alley ✓
	1 + 46			
N - 3.4	EL. cement apron	4.54	-0.55	✓
N - 4.85	" do gar.	4.29	-0.30	✓
	1 + 54.5			
N - 4.6	w.l. cement apron	4.60	-0.61	✓
N - 5.05	" do gar.	4.21	-0.22	✓
	1 + 69.3			
N - 4.65	EL. cement apron	4.51	-0.52	✓
N - 5.15	" do gar.	4.25	-0.26	✓
	1 + 74.3			
S - 1.1	2' SIM. gar. cement	4.68	-0.69	✓
S - 0.05	2' cement apron	4.85	-0.86	✓

S	dist	4.7	-0.7
C		4.8	-0.8
N		4.7	-0.7
	1+81		
S	+0.3 10" P.P. ✓		
	2+00		
N		4.9	-0.9
C		4.9	-0.9
S		4.9	-0.9
	2+23.90 w/ Bayside Lane		
S		4.9	-0.9
C		4.9	-0.9
N		4.9	-0.9
	0+0 E.L. Bayside		
N		4.8	-0.8
C		4.9	-0.9
S		4.8	-0.8
	0+02		
S	-5.4 12" P.P. ✓		
	0+06		
S	-0.15 w/ Car apron ^{CEM}	4.99	-1.00 ✓
	0+113		
S	-10 w/ do. garage	4.36	-0.37 ✓ CEM.
	0+20.5		
S	on edge apron	4.88	-0.89

	0+29.6		
S	-10 E.L. do. gar.	4.37	-0.38 ✓ CEM.
	0+33.3		
S	+0.1 E. Car apron ^{CEM}	4.85	-0.86 ✓
C		4.8	-0.8
N		4.6	-0.6
	0+58.73 end of alley P.		Don't think this has been opened
N		4.4	-0.4
C		4.4	-0.4
S		4.4	-0.4
	0+87.20		
C	w/ 5' Sidewalk on Bayside "	4.38	-0.37 ✓

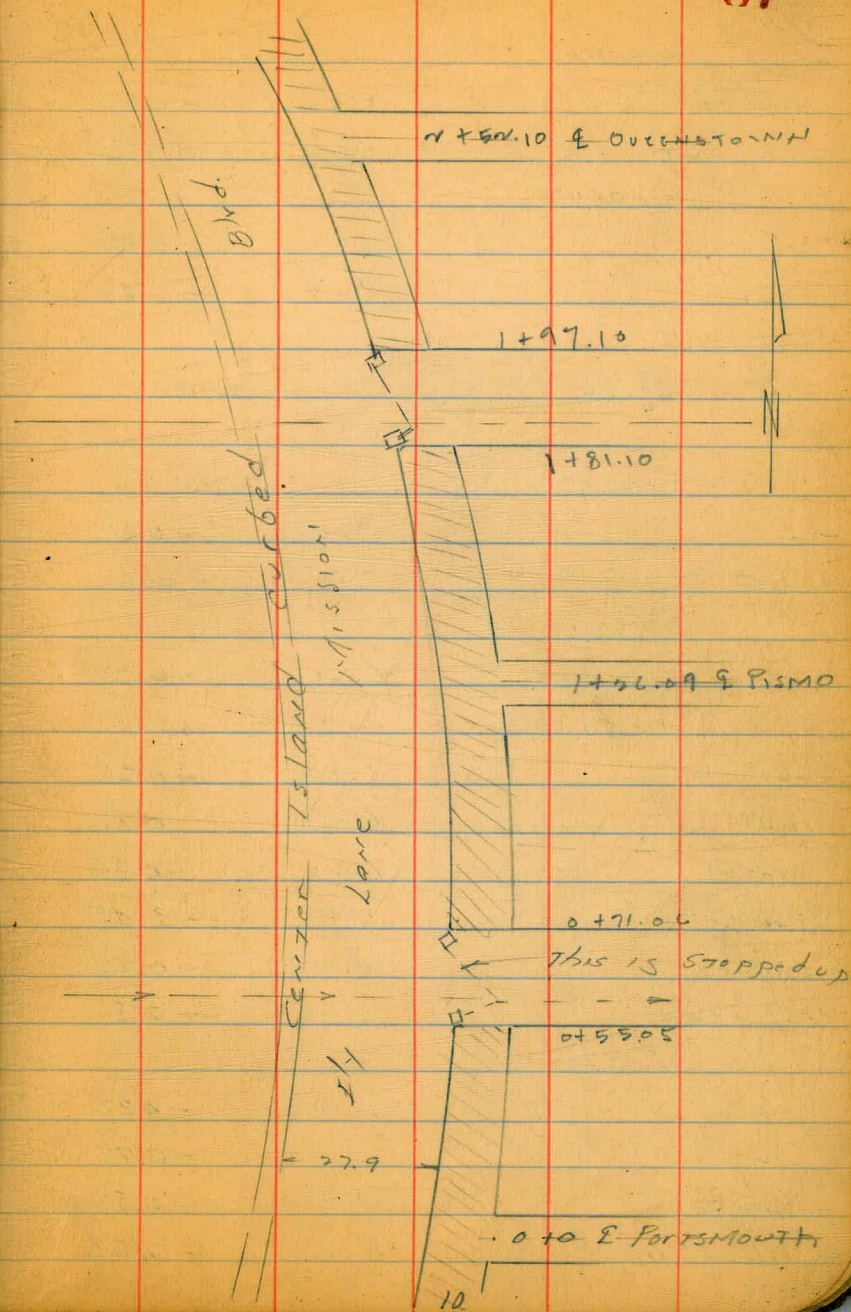
Moore
Rand
Mayne

INDEXED
C.S.K.

INDEXED

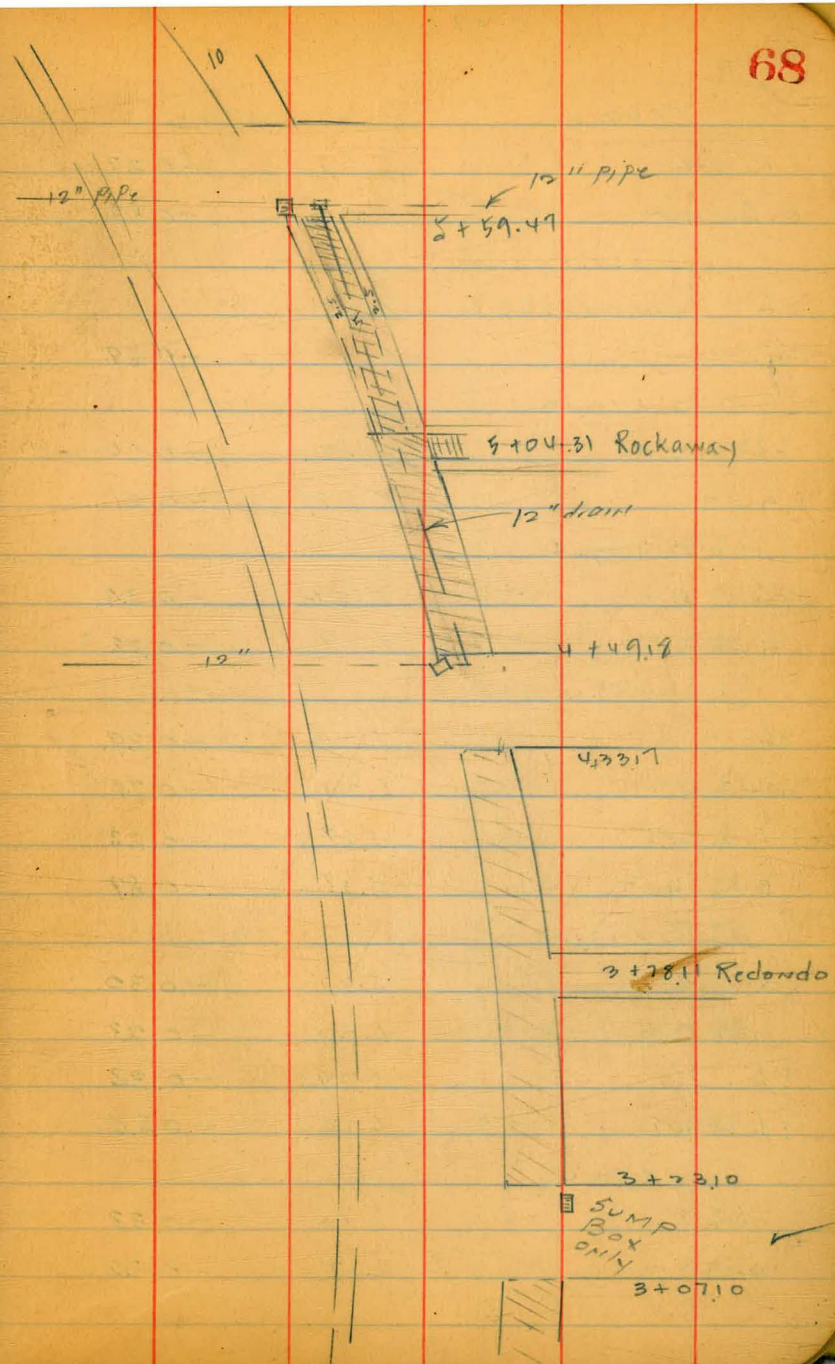
Ely curb & gutter levels
of Ely Lane of Mission Blvd.
Portsmouth Ct. to alley north
of Rockaway Ct.

					Santa Clara Bayside Lane
NEBP	438	3.56		-0.82	
T.P.	577	5.48	3.85	-0.29	
	0+100				
cb			5.84	-0.36	
gvt			6.10	-0.62	
	0+27.50				
cb			5.82	-0.34	
gvt			6.16	-0.68	
	0+55.05				
cb			5.83	-0.35	
gvt			6.29	-0.81	
grate			6.34	-0.86	
E.L. 8" Pipe			8.38	-2.90	
e.h. cb			5.79	-0.31	
E.L. gvt			6.43	-0.95	
	0+71.06				
cb			5.80	-0.32	
gvt			6.26	-0.78	
grate			6.31	-0.83	
E.L. 8" Pipe			7.96	-2.48	



5.48

	0+7106			
E.L. cb		5.70	-0.22	
E.L. gvt		6.35	-0.87	
	0+9857			
cb		5.83	-0.35	
gvt		6.17	-0.69	
T.P.	5.84	5.47	5.85	-0.37
	1+2609			
cb		5.86	-0.39	
gvt		6.10	-0.63	
	1+5359			
gvt in drive		6.21	-0.74	
	1+8110			
cb		5.83	-0.36	
gvt		6.29	-0.82	
grate		6.33	-0.86	
E.L. 12" pipe		8.92	-3.45	
E.L. cb		5.76	-0.29	
E.L. gvt		6.22	-0.86	
	1+9710			
cb		5.79	-0.32	
gvt		6.24	-0.77	
grate		6.29	-0.82	
E.L. 8" pipe		7.99	-2.52	



1+9710			
EH cb	5.74	-0.27	
E.L. gut	6.30	-0.83	
2+22x.6			
cb IN driveway			
gut	6.15	-0.69	
2+5210			
cb	5.87	-0.40	
gut	6.08	-0.61	
2+79.6			
cb	5.81	-0.34	
gut	6.19	-0.72	
3+07.10			
cb	5.76	-0.29	
gut	6.21	-0.74	
EH cb	5.69	-0.22	
EH gut.	6.36	-0.89	
3+2310			
cb	5.77	-0.30	
gut	6.20	-0.73	
EH. cb	5.79	-0.32	
EH. gut	6.33	-0.86	
3+50.5			
cb	5.80	-0.33	
gut	6.17	-0.70	

3+7811			
cb	5.78	-0.31	
gut	6.09	-0.62	
T.P.	5.84	5.52	5.79 -0.32
4+05.64			
gut IN driveway	6.16	-0.64	
4+33.17			
cb	5.86	-0.34	
gut	6.26	-0.74	
EH. cb	5.83	-0.31	
EH. gut	6.40	-0.88	
4+49.18			
cb	5.89	-0.37	
gut	6.33	-0.81	
grate	6.38	-0.86	
EH 12" Pipe	8.78	-3.26	
EH. cb	5.59	-0.07	
E.L. gut	6.24	-0.82	
4+76.73			
gut IN DRIVE	6.27	-0.75	
5+04.31			
cb	5.88	-0.36	
gut	6.17	-0.65	

5231.89

cb 5.87 -0.35

gut 6.21 -0.69

5+59.47

cb 5.87 -0.35

gut 6.34 -0.82

grate 6.42 -0.90

F.L. 9.65 -4.13

F.L. cb 5.78 -0.26

F.L. gut 6.31 -0.79

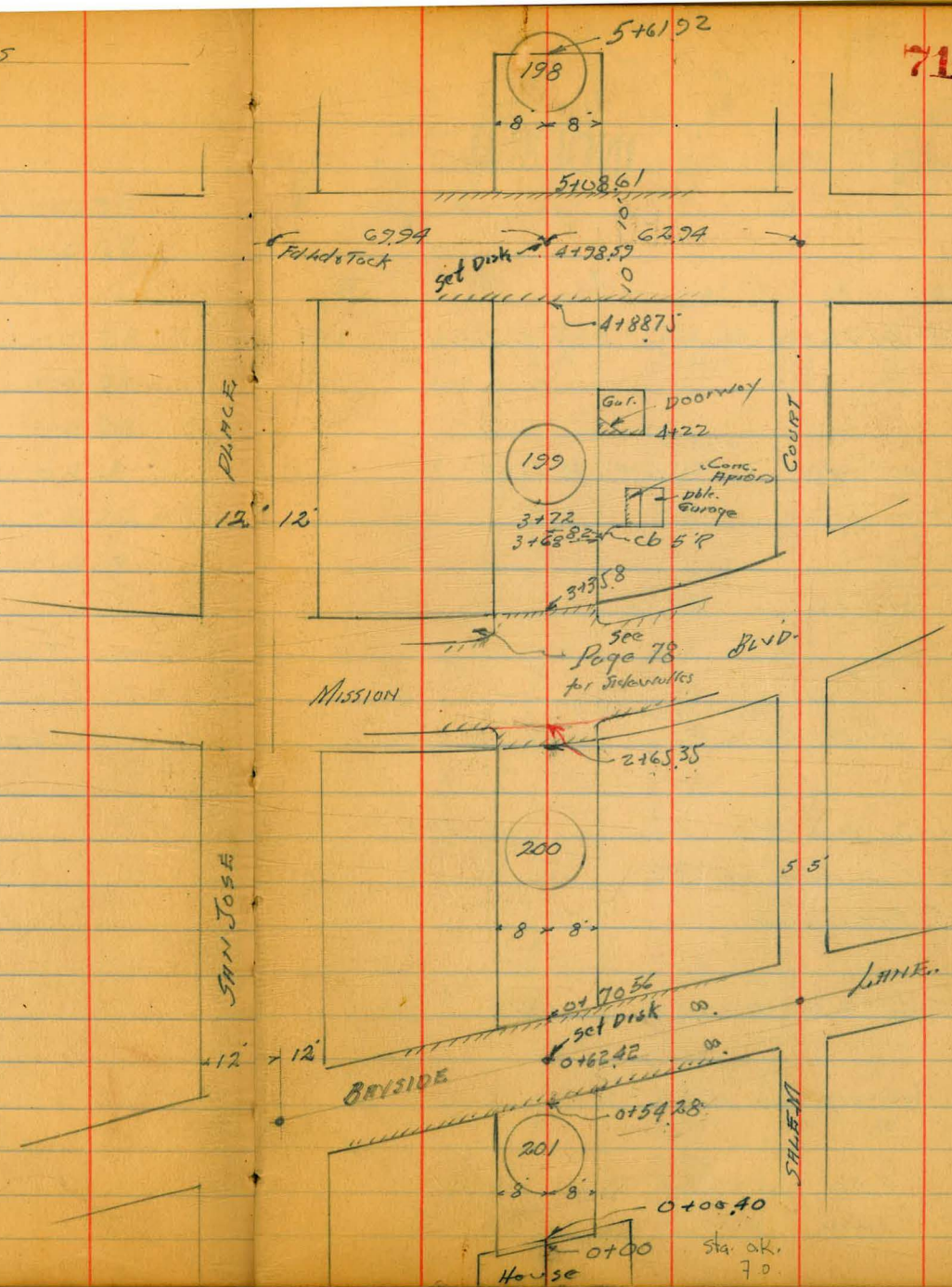
T.P. 3.95 4.04[✓] 5.43 +0.09check to BMBP re cor 5.34 -1.28 -1.27
San Jose Pl & Bayside Lane 4.04 0.01

Walker
Johnson
Pope
Groff
4-4-49

CROSS SECTION ALLEYS
Block 198 to 201
IN MISSION BEACH

INDEXED
WK
APR 5 1949

71



Cross Section Alleys 198-201
Mission Beach

INDEXED

0+62.42 = 1/2 Bayside

0+54.28 = Fly Line Parrying Diag. Sections

0+52 10.2 Lt = ELEC. Tel Pole # P-3809
0+50

0+33 = Pole Anchor 9.3 Lt

0+30

(West Entrance)
0+29 to 0+49 = Frame Garage 8 Ft. Dirt Floor

0+24.5 = End Conc. Floor 2 Car Gar. on Lt

0+20 = 4 Garage on Rt

0+08.5 = Top Conc. Floor

0+03.5 = Top 2 Car Gar. on Lt 7.5 Lt

0+00 = Sec Fly Line Alley

TP 4.30 3.99 8.46 -0.31
1.07 8.15 7.08 ✓

Lt	Lt	Rt	Rt	72
-1.53	-1.13	-1.50	-1.48	-1.49
5.52	5.52	5.49	5.47	5.48
50	38	18	8.14	8.14
Per	Per	Per	Per	Per

-1.39	-1.26	-1.27	-1.41	-1.22	-1.28	-1.36
5.38	5.25	5.26	5.40	5.21	5.27	5.35
50	16	8.14	on Per	8.14	23	50
Per	Per	Per	Per	on Per	Per	Per

-1.0	-1.1	-1.3	-1.3	-1.5
4.7	5.0	5.2	5.2	5.4
13	8		8	13
				Dirt Floor Garage

-1.1	-1.9	-1.2	-1.2	
5.0	4.8	5.1	5.1	
13	8		8	
			9.7.11	

-1.97			-1.08
4.96			
9.3			
	-1.75		
	4.94		5.97
	8		10.3
	on floor		Conc. Floor

-1.2	-1.2	-1.1	-1.0	-1.1
5.1	5.1	5.0	4.9	5.0
13	8		8	13

3.99

SPM SWBP. Cur Log & Sec Wall P-26

1+815 = End 6' Board Fence 7.7 Lt.

1+735 = Reg. Conc. Slab = Reg. 6' Board Fence 7.7 Lt.

INDEXED

1+73

Lt.	2	Fl.	73
.05	.45	.9	.8
3.94	4.44	4.8	4.7
11.8 Floor	8 Toe Conc. Apron	8	12

1+60 = Reg. Garage on 4" Conc. Floor & Apron

0	.49	1.0	.9	1.0
3.29	4.42	4.9	4.8	4.9
11.8 Conc. Floor	8 on Toe Conc. Apron		8	12 at House

1+31

.48	.9	1.1	1.2	1.3
4.47	4.8	5.0	5.1	5.2
8.5 Conc. Floor	8		8	13

1+00

-1.0	-1.0	-1.3	-1.0
4.9	4.9	5.2	4.9
13	8		8 at Garage

0+87 = East end Garage Dirt Floor East Entrance

-1.3	-1.0	-1.3	-1.1	-1.1
5.2	4.9	5.2	5.0	5.0
	8		8 at Car Garage	13 at Doorway

0+70.56 = W. Bayside on Edge of Parking Conc.

3.99

-1.30	-1.29	-1.31	-1.46	-1.35	-1.29	-1.37
5.29	5.26	5.30	5.45	5.34	5.28	5.36
50 Pav.	20 Pav.	8.14 Pav.	3.99 Parking	8.14 Pav.	20 Pav.	50 Pav.

INDEXED

Lt Lt Rt.

2+65.35 = E. cb Mission Blvd sec on Par.

-39	-66	-29	-70	-74	-76	-32	-70	-34
7.12	7.39	7.02	7.51	7.47	7.49	7.05	7.43	7.07
50 cb,	50 cut	8 cb.	8 cut.	8 cut on block Top Putch	8 cut	8 cb.	50 cut.	50 cb.

2+55.48 = Exist Par. Mission Blvd. Diag. sec

-28	-88	-82	-96	-31
7.01	7.61	7.55	7.69	7.04
82 cb.	82 cut.	6.73 Par.	7.8 cut.	7.8 cb.

T.P. 7.04 6.73 4.30 -0.31

2+45

-2	-5	-6	-3	+1
4.1	4.4	4.5	4.2	3.8
13	8		8	13

2+25

+2	-2	-4	-6	-4	0
3.7	4.1	4.3	4.5	4.3	3.9
13	8	6		8	13

2+10

+4	+2	-1	-8	-6	-4	-2
3.5	3.7	4.6	4.7	4.5	4.3	4.1
13	8	3		6	8	13

2+00

-5	-5	-8	-9	-8	-3
4.4	4.4	4.7	4.8	4.7	4.2
13	8	5		8	13

1+89 = Elec Pole # A-324 7.4 = Lt.

1+88 } shed on Lt.
1+81.5 } - 7.7 Lt.

3.99

3.99

Cross Sections - Alleys 198-201
Mission Blvd

3+97 = East end Garage Conc. Floor East Entrance

INDEXED

3+89 = End 2 Car Garage on Rt.

3+72 Beg. 2 Car Garage Conc. Floor & Apron

3+68

3+40

3+35.8 = Mission Blvd. West edge Easting Corner Paving = East Rim MH.
(West Garage Elev.)
= Rim MH -

3+25.75 = W. cb. Lane Mission Blvd.

6.73

	Lt	Rt	Rt	Rt	Rt	75
	2.40 13	1.8 4.9 9	1.8 4.9 8	1.7 5.6	1.7 5.0 8	1.6 5.1 13
	2.0 4.7 13	1.6 5.1 8	1.6 5.1	1.4 5.3 8	1.18 5.45 12.5	1.63 5.10 20.5
	1.1 5.6 13	1.1 5.6 8	1.0 5.7	.8 5.9 8	.83 5.90 13	1.59 5.43 20.9
					.8 5.9 8.2	1.90 5.43 8.2
					5.9 8.2 at cb Rd.	5.43 8.2 Top cb Return
		+1.5 6.2 13	+1.4 6.3 8	+1.2 6.5	+1.2 6.5 4	+1.5 6.2 8
						+1.6 6.1 13
			+1.4 6.59 8	+1.5 6.58 Pav. Rim MH	+1.2 6.61 8.1 Gut.	+1.0 6.33 8.1 cb
	+1.1 6.62 50 cb.	-3.1 7.04 50 Gut.	+1.21 6.52 8 Gut.	-1.8 7.21 8 Landfill Sump	-1.64 7.37 2.7	-1.52 7.25
					-1.4 7.17 8 Gut.	+1.8 6.55 8 cb.
						-3.7 7.10 4.7 Gut.
						+1.2 6.61 2.7 cb.

Cross Sections

Alley: 198-201 - Mission Church

INDEXED

5+15

5+10 = Tel. Pole } Pole
 = E. Elec. } #P-3808 8.8' Lt = 4

5+08.6' - West edge Existing Conc. Pav. way

4+98.59 = 1/2 Strandway

4+88.75 = East edge Pav. Strandway

4+65 = West edge Conc. Walk

4+63 = East edge Conc. Walk

T.P. 5.14 11.04 0.83 5.90

4+22 = East end Garage Conc. Floor. Entrance ^{S East.}

4+11 7.84 = Elec. Pole #P.R-736

6.73

4.

2

At 76

6.3	6.2	6.1	5.9	5.9
4.7	4.8	4.7	5.1	5.1
99 at 814.	8		8	13

6.11	6.02	5.99	5.96	5.91
4.93	5.02	5.05	5.08	5.13
25 Pav.	8 Pav.	Pav.	8 Pav.	25 Pav. way

5.82	5.72	5.69	5.67	5.62
5.22	5.22	5.35	5.37	5.42
25 Pav.	8 Pav.	Pav.	8 Pav.	25 Pav.

6.01	5.92	5.91	5.87	5.86
5.03	5.12	5.13	5.17	5.18
25	8	Pav.	8 Pav.	25 Pav.

5.06
5.98
9
Walls

4.95	4.7	4.7	4.8
6.09	6.3	6.3	6.2
9 Conc. Walk	8	11.04	77 Fence

3.1	2.9	2.7	2.8	2.96
3.6	3.8	4.0	3.9	3.77
11	8		8	8.6 Conc. Floor.
		6.73		

Cross Section Alleys 198-201
Mission Beach

INDEXED

				⁰⁰¹
				708
Chk. Starting BM	314			707
T.P.	563	1021	646	4.58

6+00.6¹ = East edge Conc. Walk

5+88

5+61.92 = End of Alley Block 128

5+51 = Garage on Lt. Dirt Floor

5+45 = Elec. Pole # 710 - 8' Lt. = 2

5+35

11.04
7

Lt.

2

Rt.

77

4.60
6.44
on walk

	3.6	3.6	3.9	4.5
	74	74	71	6.5
	17		8	13
	at House			

	5.1	5.1	5.3	5.5
	5.9	5.9	5.7	5.5
	8		8	13

	5.4	5.4	5.5	5.6	5.6
	5.6	5.6	5.5	5.4	5.4
	8.5	8			13
	Dirt Floor				

	6.3	6.1	5.9	5.8	6.0
	4.7	4.9	5.1	5.2	5.0
	9.9	8		8	13
	at Sid.				

11.04
7

V-Section-Alleys Blocks 198-201

Mission Beach-

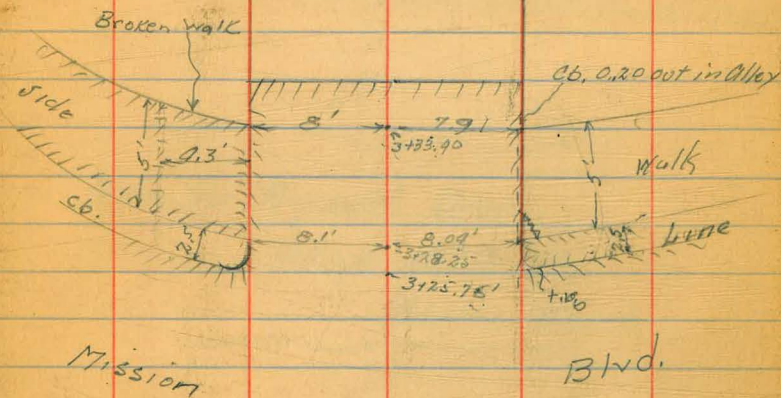
INDEXED

78

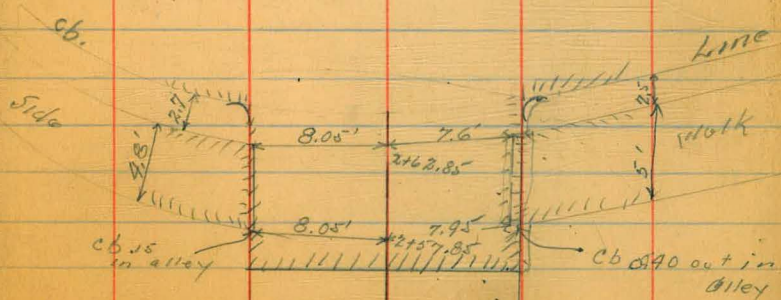
	^{.20}	^{.26}	^{.21}	^{.32}
	<u>5.96</u>	<u>5.40</u>	<u>5.45</u>	<u>5.34</u>
3133.40	17.5' Lt	17.5' Lt	12.3' Lt	8' Lt

	^{x.31}	^{x.20}	199.
	<u>5.29</u>	<u>5.46</u>	
	7.9' Rt.	16.4' Rt	

	^{.20}	^{.23}	^{.18}	^{.26}	^{.21}	^{.37}
	<u>5.96</u>	<u>5.43</u>	<u>5.98</u>	<u>5.20</u>	<u>5.45</u>	<u>5.29</u>
3128.25	16.8' Lt	11.8' Lt	11.6' Lt	8' Lt	16.5' Lt	8' Lt



	^{.28}	^{.28}	^{.33}	^{.90}
	<u>5.94</u>	<u>5.94</u>	<u>5.99</u>	<u>5.26</u>
2162.85	13.05' Lt	8.02' Lt	7.62' Lt	12.6' Lt



	^{.19}	^{.24}	^{.29}	^{.27}
	<u>5.85</u>	<u>5.90</u>	<u>5.95</u>	<u>5.23</u>
2157.85	13.05' Lt	8.02' Lt	7.62' Lt	12.6' Lt

5.97 5.66 -0.31

200

79

cht
ler

6-34 S. D. BINDERY

BENT #3

DATE

ON
E

Over or Under
Expenditure

BENT #4

Notes for Proposed Drain -
Alleys 187 & 186
Mission Beach.

Indexed
C.S.K. Moore
3-26-43

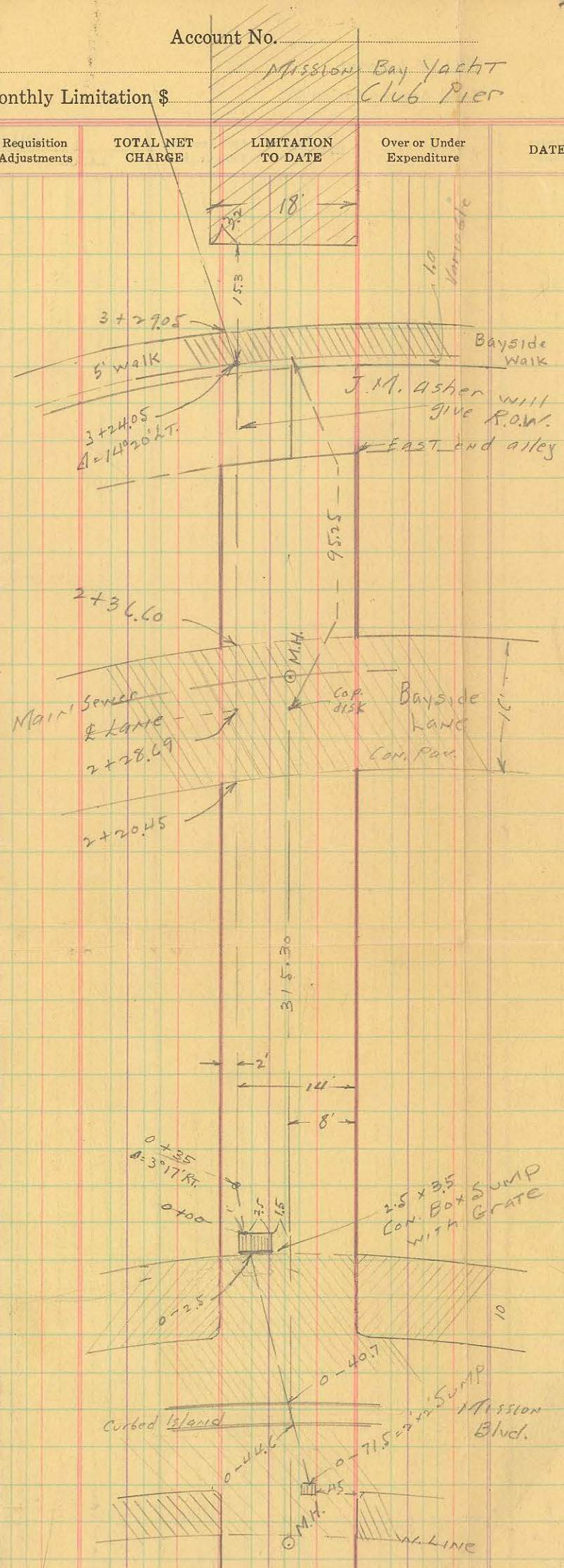
Title of Account
Total Appropriation \$

Monthly Limitation \$

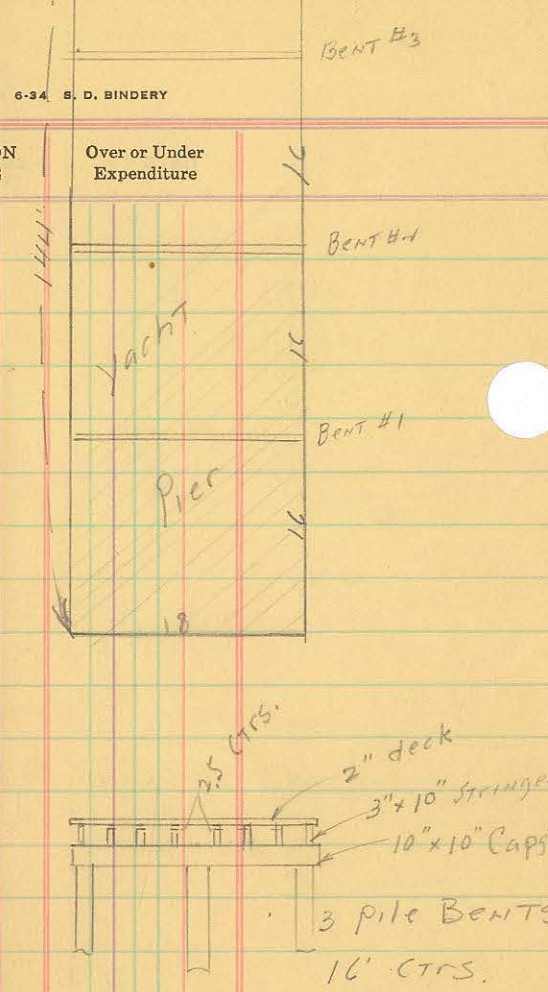
Account No.
MISSION Bay YACHT Club Pier

1000 6-34 S. D. BINDERY

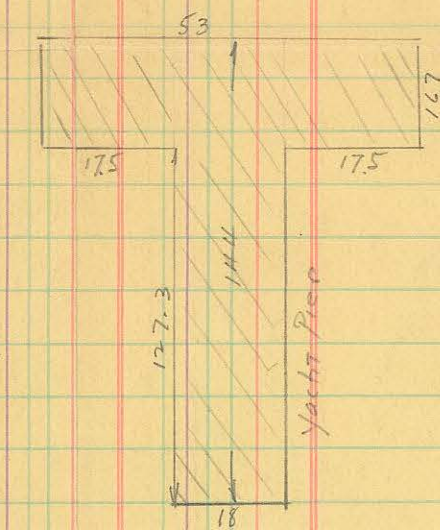
DATE	REQ. NO.	Aud. Transfer, Cash Cr., Etc.	CHARGE		Requisition Adjustments	TOTAL NET CHARGE	LIMITATION TO DATE	Over or Under Expenditure
			LABOR	MATERIAL				
Blk 18C-187 Mission Beach								
Levels for proposed drain in alley								
BET. Queenstown and Redondo Cts.								
Mission Blvd. to Bay								
Sw. Wall	252	9.60	7.08					
T.P.	247	5.45	4.84		2.78			
T.P.	297	4.30	3.92		1.33			
M.H. RIM on Miss. Blvd.	4.22		0.08					
" FL. "			6.32		-2.02			
0-71.5 Sump Grate	4.97		-0.67		-0.67			Sump on West gutter
" " Bot.	8.84		-2.52		-2.52			Mission Blvd.
0-44.6 Pav.	4.20		0.10					
" Top ls. Cb.	3.57		0.73					
0-40.7 " "	3.75		0.55					
" Pav.	4.43		-0.13					
0-13 "	5.02		-0.72					
0-71.5 W. edge 2.5 x 3.5 Sump	5.14		-0.82		-0.82			grate E. line
0-40.0 E " "	5.17		-0.87		-0.87			Mission Blvd.
" Bot. Sump	8.74		-9.49					
0-12.5 Δ = 3° 17' Rt.	4.7		-0.2					
0-17.0 "	4.8		-0.5					
1	4.7		-0.9					
+5.0	5.0		-0.7					
✓	5.3		-1.0					
+20.45 W. Pav. edge	5.07		-0.77					
+18.69 E " "	5.23		-0.93					Bayside Lane
+36.60 E " "	5.01		-0.71					
M.H. RIM on Lane	5.19		-0.89					
" FL. from West	9.72		-5.42					
" " " East	9.64		-5.32					
" " Main Lane	11.04		-6.74					
✓ +5.0	5.1		-0.8					
3	4.6		-0.3					
3 +24.05 Δ = 140° 20' Lt. Wedgework	4.67		-0.37					
3 +29.05 E " "	4.79		-0.69					Bayside Walk
3 +4.0	4.9		-0.6					
3 +5.5	6.9		-2.6					



DATE	REQ. NO.	Aud. Transfer, Cash Cr., Etc.	CHARGE		Requisition Adjustments	TOTAL NET CHARGE	LIMITATION TO DATE	Over or Under Expenditure
			LABOR	MATERIAL				
			4.1					
			4.30					
	3485		8.8	-9.5				
	4400		10.1	-5.8				
	Top Pier deck		4.16	0.19				
	Set B.M. Cap. disk		5.21	-0.91				alley and Bayside Lane
	T.P.	916	9.5	3.94		0.36		
	T.P.	219	9.68	2.03		7.49		
	check to Orig. B.M.		2.60	7.08		7.08		



4/13/43 -
Moore phoned - Top of 6" Sewer Pipe in Alley - 192
at E. Line Mission Beach Blvd = -2.47 Top Pipe -
2" Water main - Same Place. - 3.10 Top Pipe

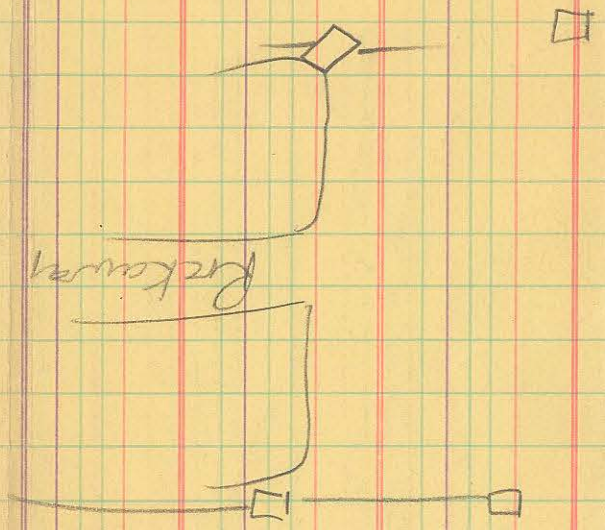


Title of Account _____

Total Appropriation \$ _____

Monthly Limit \$ _____

DATE	REQ. NO.	Aud. Transfer, Cash Cr., Etc.	CHARGE		Requisition Adjustments	TOTAL NET CHARGE	LIMITATION TO DATE	Over or Under Expenditure	DATE	REQ. NO.	Aud. Transfer, Cash Cr., Etc.	CHARGE		Requisition Adjustments	TOTAL NET CHARGE	LIMITATION TO DATE	Over or Expen
			LABOR	MATERIAL								LABOR	MATERIAL				



*Notes for Proposed Drain -
Alleys 187 & 186
Mission Beach*

TABLE X.
MIDDLE ORDINATES OF RAILS
Length of Rail (feet)

C	R	30	28	26	24	22	20	C	R	30	28	26	24	22	20
o	Foot	Inch	Inch	Inch	Inch	Inch	Inch	o	Foot	Inch	Inch	Inch	Inch	Inch	Inch
0-20	17189	.08	.07	.06	.05	.04	.03	8	716.8	1.88	1.64	1.42	1.20	1.01	.84
0-40	8594	.16	.14	.12	.10	.08	.07	9	637.3	2.12	1.84	1.60	1.35	1.14	.94
1-0	5730	.24	.20	.18	.15	.13	.10	10	573.7	2.36	2.05	1.78	1.50	1.27	1.04
1-20	4297	.31	.27	.23	.20	.17	.13	11	521.7	2.59	2.26	1.95	1.65	1.39	1.15
1-40	3438	.39	.34	.29	.25	.21	.17	12	478.3	3.83	2.47	2.15	1.81	1.54	1.26
2-0	2865	.47	.41	.35	.30	.25	.20	13	441.7	3.05	2.66	2.30	1.96	1.66	1.36
2-20	2456	.55	.48	.41	.35	.29	.23	14	410.3	3.30	2.87	2.48	2.10	1.78	1.46
2-40	2149	.63	.55	.47	.40	.33	.27	15	383.1	3.54	3.08	2.68	2.26	1.91	1.57
3-0	1910	.71	.62	.53	.45	.38	.31	16	359.3	3.76	3.28	2.83	2.40	2.04	1.67
3-20	1719	.78	.68	.59	.50	.42	.35	17	338.3	4.00	3.48	3.02	2.57	2.16	1.78
3-40	1563	.86	.75	.65	.55	.46	.38	18	319.6	4.21	3.67	3.18	2.70	2.28	1.87
4-0	1433	.94	.82	.71	.60	.50	.42	19	302.9	4.45	3.89	3.36	2.86	2.41	1.98
4-20	1323	1.02	.89	.77	.65	.55	.45	20	287.9	4.70	4.09	3.55	3.00	2.54	2.09
4-40	1228	1.10	.96	.83	.70	.59	.48	22	262.0	5.16	4.44	3.84	3.30	2.80	2.29
5	1146	1.18	1.03	.89	.75	.63	.52	24	240.5	5.64	4.92	4.20	3.59	3.04	2.50
6	955.3	1.41	1.23	1.06	.90	.76	.62	26	222.3	6.07	5.29	4.58	3.88	3.29	2.70
7	819.0	1.65	1.44	1.24	1.05	.89	.73								

TABLE XI.
SHORT RADIUS CURVES

Radius Feet	Chord Feet	Central Angle	Deflection Angle	Deflection for 1 Foot
35	10	16-26	8-13	49.3
45	10	12-46	6-23	38.3
50	15	17-16	8-38	34.5
60	15	14-22	7-11	28.8
75	15	11-30	5-45	23.0
100	20	11-30	5-45	17.3
120	20	9-34	4-47	14.3
150	20	7-39	3-49	11.5
190	25	7-32	3-46	9.15
200	25	7-10	3-35	8.6
225	25	6-25	3-12	7.7
240	25	5-58	2-59	7.2
250	25	5-44	2-52	6.9
275	25	5-12	2-36	6.2
288	50	9-58	4-59	6.0
300	50	9-32	4-46	5.7
350	50	8-12	4-06	4.9
376	50	7-40	3-50	4.6
400	50	7-10	3-35	4.3
410	50	7-00	3-30	4.2

To find length of curve divide angle from P. C. to P. T. by central angle of chord and multiply by length of chord.

TABLE XII.
INCLINED DISTANCE OF 100 FT. REDUCED TO HORIZONTAL

Slope	Horizontal Distance	Correction	Rise Per Foot	Slope	Horizontal Distance	Correction	Rise Per Foot
0°00'	100.000	0.000	0.000	8°00'	99.027	0.973	0.139
15'	99.999	0.001	0.004	15'	98.965	1.035	0.143
30'	99.996	0.004	0.009	30'	98.902	1.098	0.148
45'	99.991	0.009	0.013	45'	98.836	1.164	0.152
1 00	99.985	0.015	0.017	9 00	98.769	1.231	0.156
15	99.976	0.024	0.022	15	98.700	1.300	0.161
30	99.966	0.034	0.026	30	98.629	1.371	0.165
45	99.953	0.047	0.031	45	98.556	1.444	0.169
2 00	99.939	0.061	0.035	10 00	98.481	1.519	0.174
15	99.923	0.077	0.039	15	98.404	1.596	0.178
30	99.905	0.095	0.044	30	98.325	1.675	0.182
45	99.885	0.115	0.048	45	98.245	1.755	0.187
3 00	99.863	0.137	0.052	11 00	98.163	1.837	0.191
15	99.839	0.161	0.057	15	98.079	1.921	0.195
30	99.813	0.187	0.061	30	97.992	2.008	0.199
45	99.786	0.214	0.065	45	97.905	2.095	0.204
4 00	99.756	0.244	0.070	12 00	97.815	2.185	0.208
15	99.725	0.275	0.074	15	97.723	2.277	0.212
30	99.692	0.308	0.078	30	97.630	2.370	0.216
45	99.657	0.343	0.083	45	97.534	2.466	0.221
5 00	99.619	0.381	0.087	13 00	97.437	2.563	0.225
15	99.580	0.420	0.092	15	97.338	2.662	0.229
30	99.540	0.460	0.096	30	97.237	2.763	0.233
45	99.497	0.503	0.100	45	97.134	2.866	0.238
6 00	99.452	0.548	0.105	14 00	97.030	2.970	0.242
15	99.406	0.594	0.109	15	96.923	3.077	0.246
30	99.357	0.643	0.113	30	96.815	3.185	0.250
45	99.307	0.693	0.118	45	96.705	3.295	0.255
7 00	99.255	0.745	0.122	15 00	96.593	3.407	0.259
15	99.200	0.800	0.126	15	96.479	3.521	0.263
30	99.144	0.856	0.131	30	96.363	3.637	0.267
45	99.087	0.913	0.135	45	96.246	3.754	0.271

TABLE XIII.
MINUTES IN DECIMALS OF A DEGREE.

0 30"	.00833	10' 30"	.17500	20' 30"	.34167	30' 10"	.50833	40' 30"	.67500	50' 10"	.84167
1 00	.01667	11 00	.18333	21 00	.35000	31 00	.51667	41 00	.68333	51 00	.85000
30	.02500	30	.19167	30	.35833	30	.52500	30	.69167	30	.85833
2 00	.03333	12 00	.20000	22 00	.36667	32 00	.53333	42 00	.70000	52 00	.86667
30	.04167	30	.20833	30	.37500	30	.54167	30	.70833	30	.87500
3 00	.05000	13 00	.21667	23 00	.38333	33 00	.55000	43 00	.71667	53 00	.88333
30	.05833	30	.22500	30	.39167	30	.55833	30	.72500	30	.89167
4 00	.06667	14 00	.23333	24 00	.40000	34 00	.56667	44 00	.73333	54 00	.90000
30	.07500	30	.24167	30	.40833	30	.57500	30	.74167	30	.90833
5 00	.08333	15 00	.25000	25 00	.41667	35 00	.58333	45 00	.75000	55 00	.91667
30	.09167	30	.25833	30	.42500	30	.59167	30	.75833	30	.92500
6 00	.10000	16 00	.26667	26 00	.43333	36 00	.60000	46 00	.76667	56 00	.93333
30	.10833	30	.27500	30	.44167	30	.60833	30	.77500	30	.94167
7 00	.11667	17 00	.28333	27 00	.45000	37 00	.61667	47 00	.78333	57 00	.95000
30	.12500	30	.29167	30	.45833	30	.62500	30	.79167	30	.95833
8 00	.13333	18 00	.30000	28 00	.46667	38 00	.63333	48 00	.80000	58 00	.96667
30	.14167	30	.30833	30	.47500	30	.64167	30	.80833	30	.97500
9 00	.15000	19 00	.31667	29 00	.48333	39 00	.65000	49 00	.81667	59 00	.98333
30	.15833	30	.32500	30	.49167	30	.65833	30	.82500	30	.99167
10 00	.16667	20 00	.33333	30 00	.50000	40 00	.66667	50 00	.83333	60 00	1.00000

1914
MAY 10 1914

ENGINEERING DEPARTMENT,
SAN DIEGO,
CITY OF CALIFORNIA.