

The formula for **Success**

connecting people

The ICC, Birmingham

23 - 25 November 2014

**UK & IRELAND SAP
USER GROUP CONFERENCE**

Ian Machin License Audit Manager SAP UKI



www.sapusers.org/conference



@sapuserconf

SAP License audit update - agenda

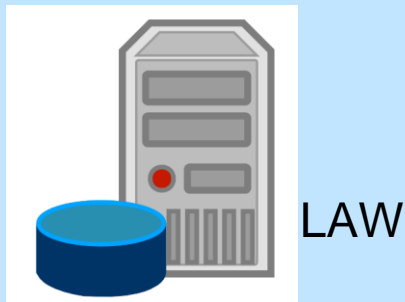
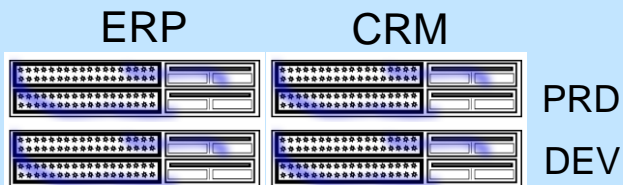
- Key principles
- Overview/ refresher
- Enhancements/ simplification
- Non standard audits
- Tips and tricks/ improving audit measurement accuracy
- AOB/ questions

SAP Audit key principles

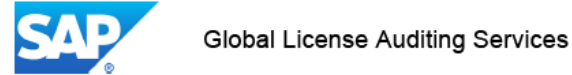
- SAP continues to put the customer in the driving seat, and bases much of the audit on self declaration
- The customer is expected to understand the audit methodology, licensing metrics and software deployment
- The standard audit does not target specific customers or solutions
- The audit tools are not a substitute for good software asset management
- Not all solutions are, and ever will be, covered by the standard SAP audit.

SAP Audit – refresher (*standard annual*)

1. System Measurements



2. Self Declared Products



Customer: [redacted] Plc

Customer number: [redacted]

SAP must receive the results of the audit by 14.10.2013.

No.	Description	Amount	Unit
1	N010 SAP POS Data Management for Retail - Revenue		GBP
2	N021 SAP Price Optimization for Retail - Revenue		GBP
3	N022 SAP GRC Access Control Package - Revenue		GBP
4	N024 SAP BusinessObjects GTS, Bundle - Revenue		GBP
5	N038 SAP Markdown Optimization f. Retail - Revenue		GBP
6	N040 SAP Workforce Deployment for R&W - Revenue		GBP
7	N043 SAP BusinessObjects GTS, Export - Revenue		GBP
8	N046 SAP BusinessObjects GTS, Import - Revenue		GBP
9	N059 SAP Promotion Mgmt. for Retail - Revenue		GBP
10	N079 SAP Archiv.byOpenText (Bus.Exp, Prot) - Licensed User		L.User
11	N089 SAP Interact.Forms byAdobe(indiv. u.)- Licensed User		L.User
12	N124 OCR option for SAP Invoice Management by OpenText - Invoice		Inv.

Remarks

Send results via e-mail to SAP



GLAS Support Portal improvements

URL <https://support.sap.com/keys-systems-installations/Measurement.html> **

The screenshot shows the SAP Support Portal interface. The top navigation bar includes the SAP logo, the slogan 'The Best-Run Businesses Run SAP', and a user profile 'Welcome, Ian Machin'. Below this is a main navigation menu with categories like 'Knowledge Base & Incidents', 'Software Downloads', 'Users & Authorizations', 'Release, Upgrade & Maintenance Info', 'Keys, Systems & Installations' (highlighted), 'Documentation', 'Remote Support', and 'Support Programs & Services'. The breadcrumb trail shows 'Keys, Systems & Installations' > 'System Measurement'. The main content area is titled 'Global License Auditing Service' and contains the following text:

The Global License Auditing Service supports all customers in fulfilling their contractual duty to carry out system measurements

Measuring the system determines the number of users of SAP systems and which SAP products are in use. The following things can be measured:

- All user types of all SAP price lists.
- Software engines, such as Human Resources, Real Estate Management, and so on.
- Additional SAP products like SAP HANA-database and SAP Unwired Platform.

The following tools and the associated documentation are available to you. These tools are constantly being extended and improved.

- Measurement program (transaction USMM) for measuring users and engines.
- License Administration Workbench (transactions SLAW or LICENSE_ADMIN) for the central consolidation of all measurement results.

Please note: Our information site tells you everything you need to know about performing an SAP system measurement - from system data maintenance and user classification through measurement programs and useful notes and tips. You'll also find information and/or documentation on each of the topics, as well as appropriate links (where applicable).

If you have any questions about system measurement, your SAP license auditor will be happy to help. Alternatively, report an incident on component XX-SER-LAS.

User classification help

Engine measurement/
self declaration

LAW help

**C user required

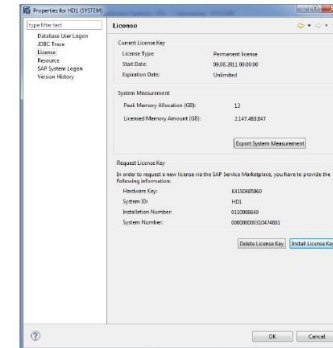
Enhancements (1)

1. User classification by role: (inheritance of user classification from user role management)

2. HANA measurement

https://support.sap.com/content/dam/library/SAP%20Support%20Portal/keys-systems-installations/system-management/info-about-system-measurement/documentation/HANA_MeasLog_UserGuide_EN.pdf

Measures peak amount of allocated memory over the last 12 months

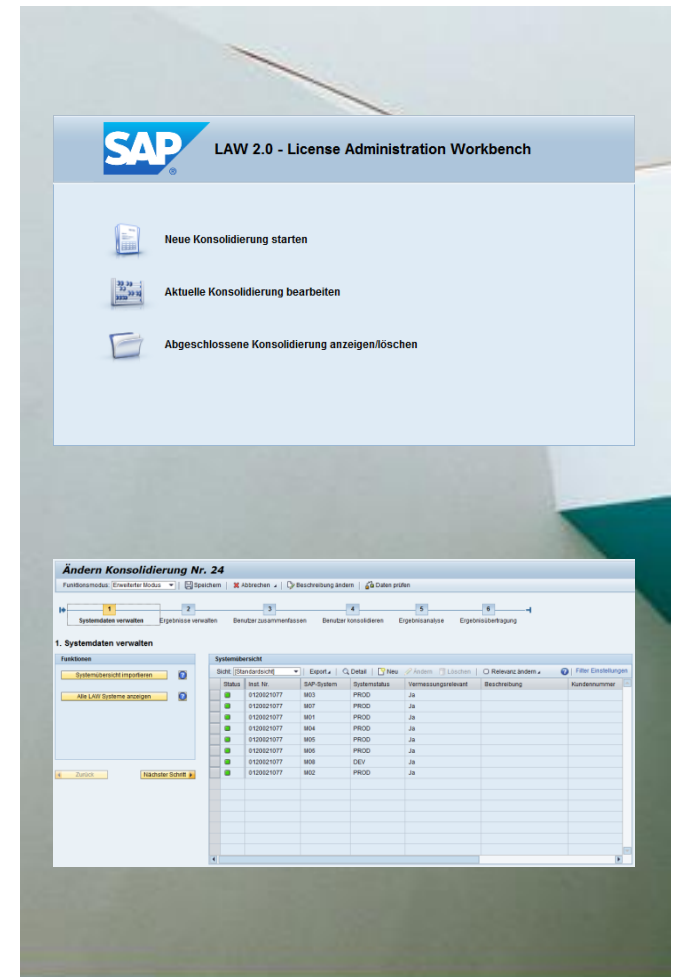


3. LMBI (Business Objects / BI audit)

<https://support.sap.com/keys-systems-installations/Measurement/BusinessObjects-Measurement.html>

Enhancements (2) – LAW 2.0 (License Admin. Workbench)

- LAW 2.0 vs. LAW 1.0
 - New User Interface (Web Dynpro)
 - New Architecture/ data model
- Availability
 - SAP_BASIS 702 Support Package 13 (March 2013)
Delivered with Solution Manager 7.1 (SP 10 / 31.10.2013)
 - SAP_BASIS 740 Support Package 02 (May 2013)
 - Pilot phase in Q4 2013 / Q1 2014
 - Global roll out in Q2 2014
- Prerequisites
 - Implement SAP Note 1995778 for latest corrections



Enhancements (3) – LAW 2.0 (License Admin. Workbench)

- New Functionalities
 - Systems are modelled as masterdata
 - Handling of HANA and Sybase results
 - Display of historical LAW consolidations
 - Analysis diagrams
 - Integrated engine self declaration
 - 2-step user grouping
 - User grouping via external user attributes
 - Customer specific consolidation rules (special user types)
 - Engine preselection for the consolidation results
 - Group consolidation



SAP Focus on Non-standard audit

- SYBASE ASE
- CPU/ CORE based licensing
- Revenue/ turnover based licensing
- Indirect use/ OpenHub (SAP BW data export)

Audit tips and tricks

Understand your contract (license metrics, SLMA and software use rights)

[http://global.sap.com/corporate-en/our-company/agreements/western-europe/agreements.epx?SearchText=&SortBy=&SortOrder=ASC&Filter1=&Filter2=1033&Filter3=AGMT001&Filter4=&page=1&pageSize=20nd SLMA\)](http://global.sap.com/corporate-en/our-company/agreements/western-europe/agreements.epx?SearchText=&SortBy=&SortOrder=ASC&Filter1=&Filter2=1033&Filter3=AGMT001&Filter4=&page=1&pageSize=20nd SLMA)

User classification / user management

- Special module user types (71-79), test users (91)
- Understand Pro/ Limited Pro definitions
- Managing leaver / expired users
- Technical user types

SAP Service Marketplace (system entries)

- Prod and Dev in scope only (system settings in USMM/ SAP SMP)
- JAVA systems excluded
- Remove decommissioned systems from SMP

LAW (License Admin. Workbench)

- Consolidation criteria
- Access to Log report before submission
- Assess

AOB/ Questions?

Ian Machin

ian.machin@sap.com

07808 575344

