

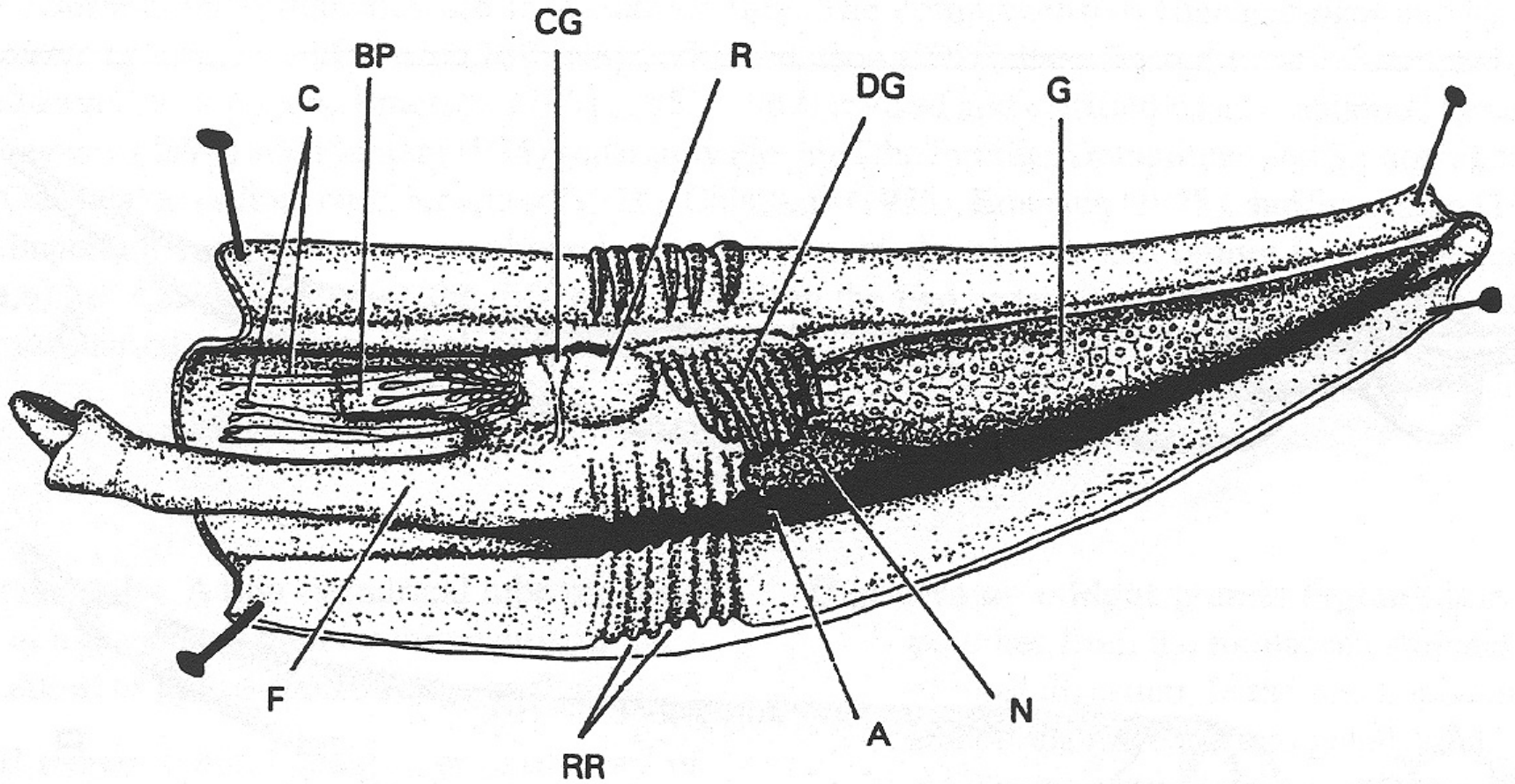
SCAMIT Scaphopod presentation

8 August 2005

WHY SCAPHOPODS?

- Is there an overlooked offshore species, i.e., *Compressidens stearnsii*?
- Is this ID correct?
- Looking for other characters other than shell shape
- Radula comparisons
- A work in progress

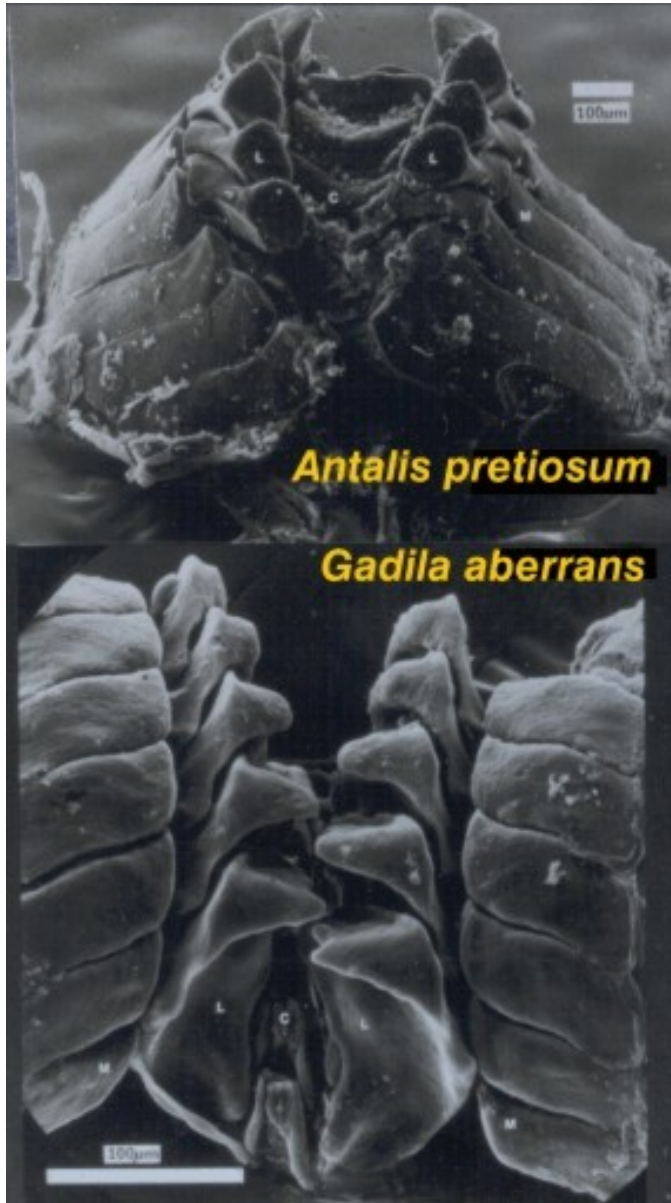
Anatomy



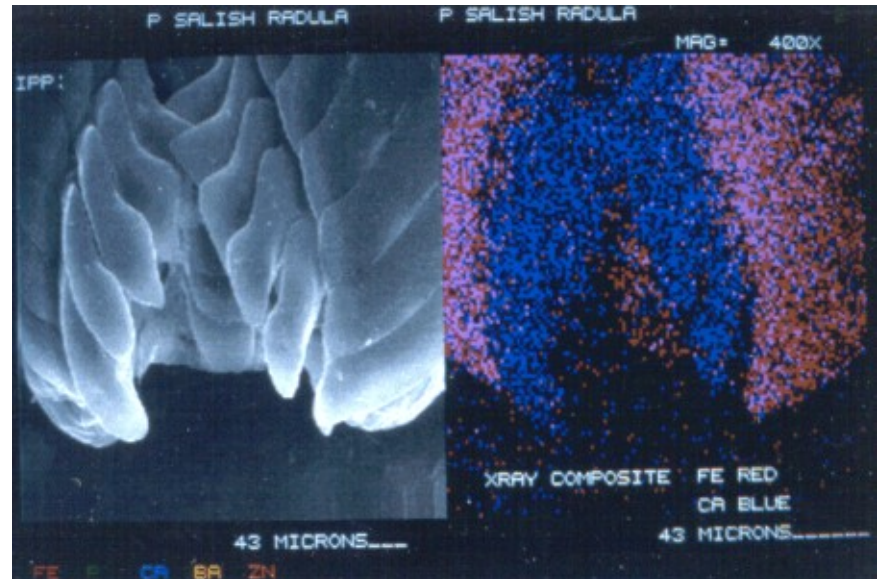
Modified from Shimek, 1998



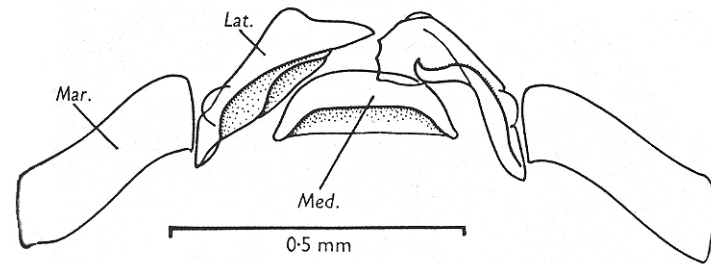
1 mm



from: <http://www.rshimek.com/Scaph1.htm>



from: <http://www.rshimek.com/Scaph1.htm>



Dentalium entalis

modified from Morton, 1959

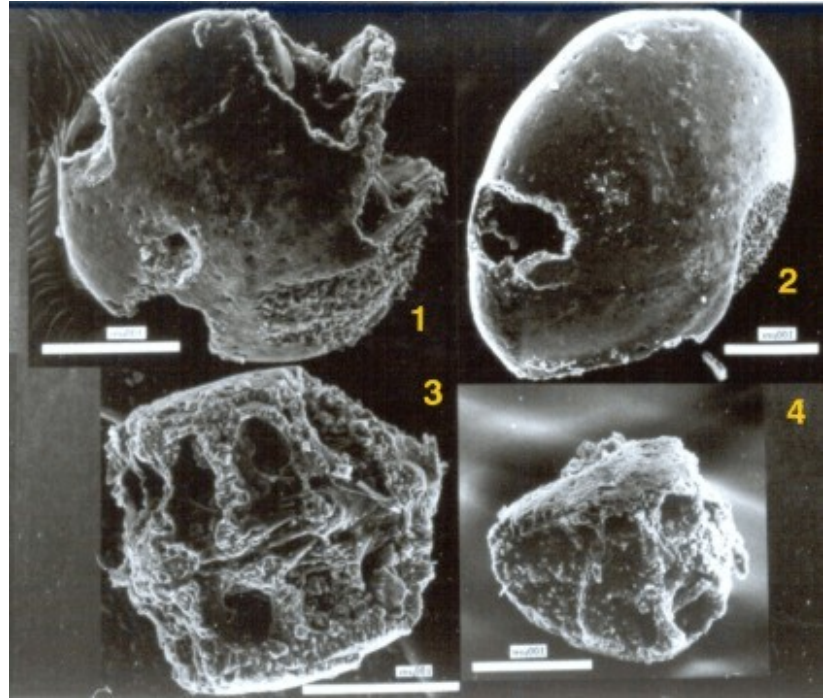
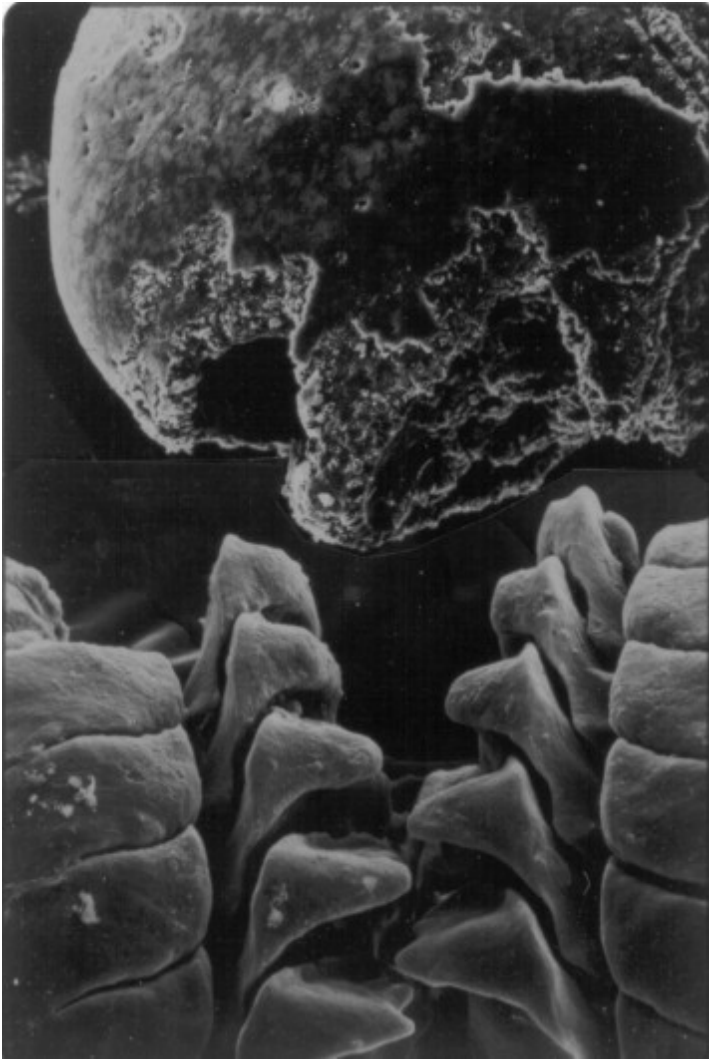


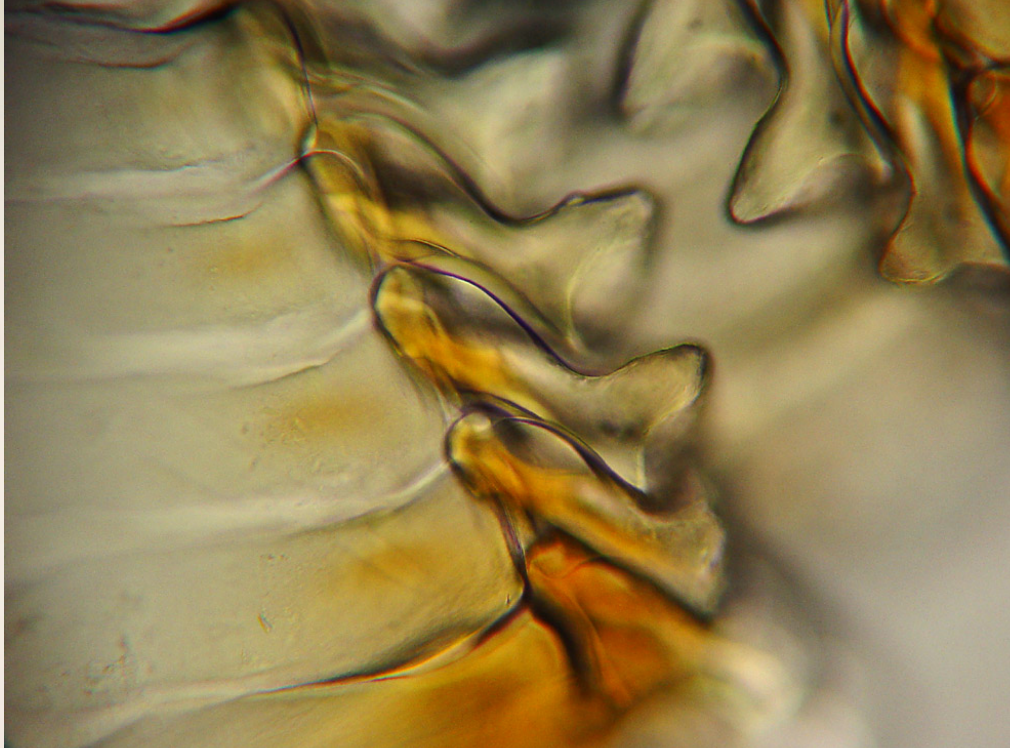
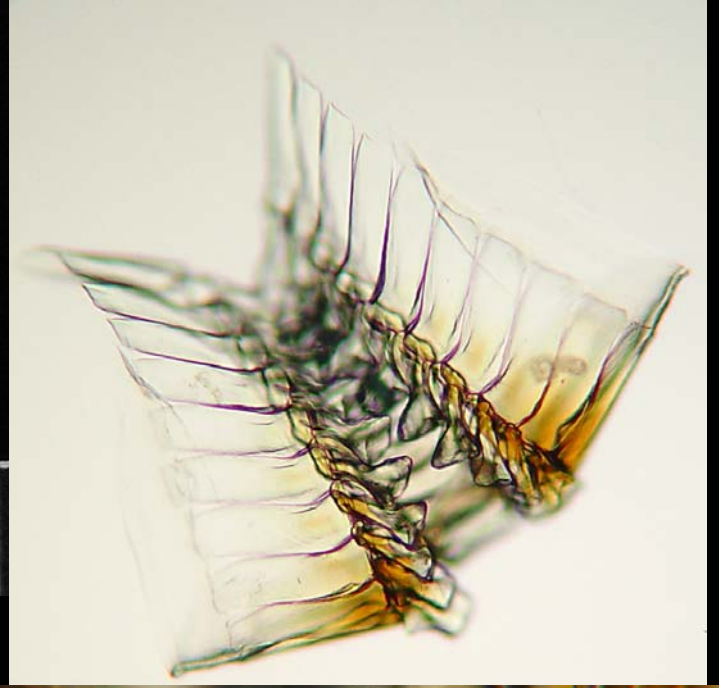
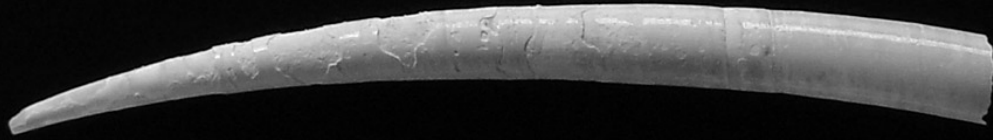
Table of radular characters for the two Scaphopod orders

(from Shimek and Steiner, 1997)

Radular Character	Order	
	Dentalida	Gadilida
Bilaterally symmetric teeth	Yes	No
Rachadian	Wider than high , large	Higher than wide, small
Lateral	Tapering base	Braoad base
Marginal	Without keel	With Keel*
Ribbon	Without folds	With longitudinal folds

*Entalinidae, without keel

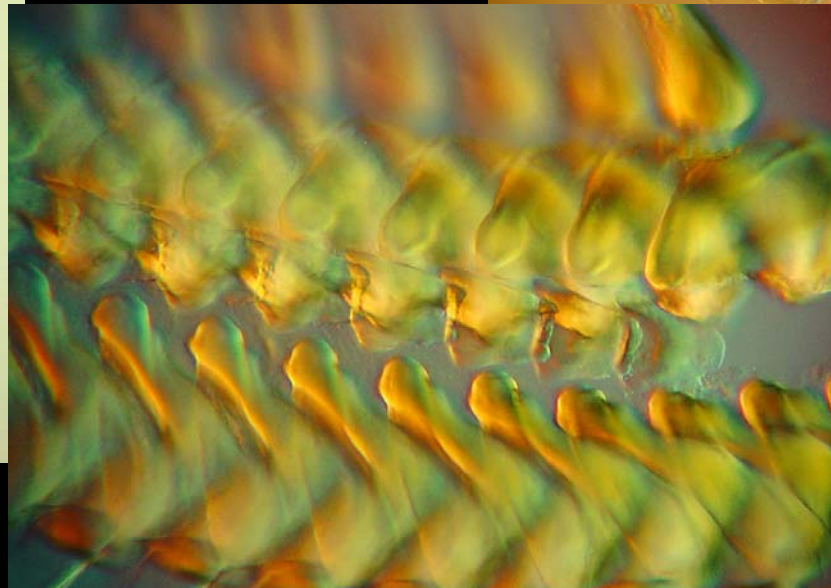
Dentalium vallicolens Raymond, 1904



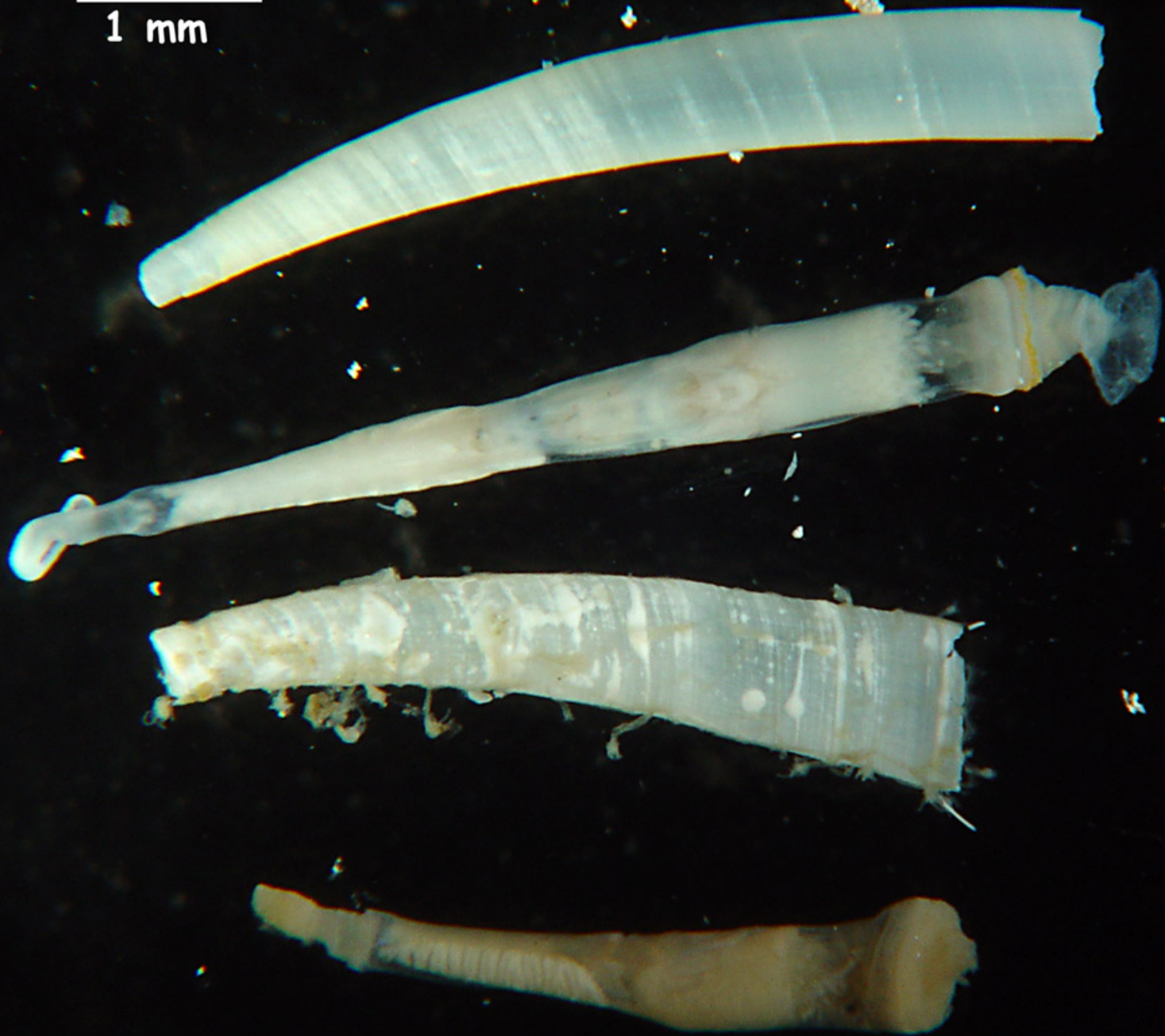
1 mm

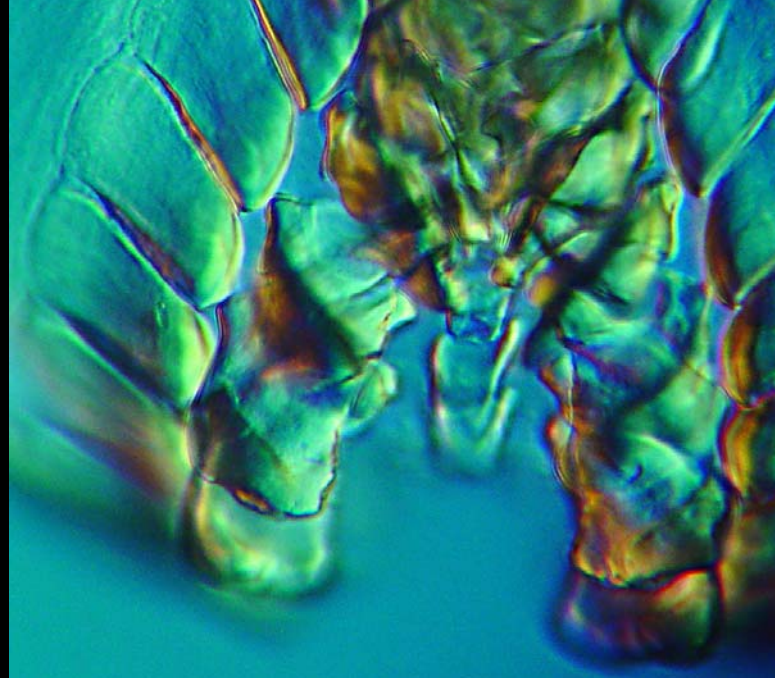


Siphonodentalim quadrifussatum
(Pilsbry & Sharp, 1898)

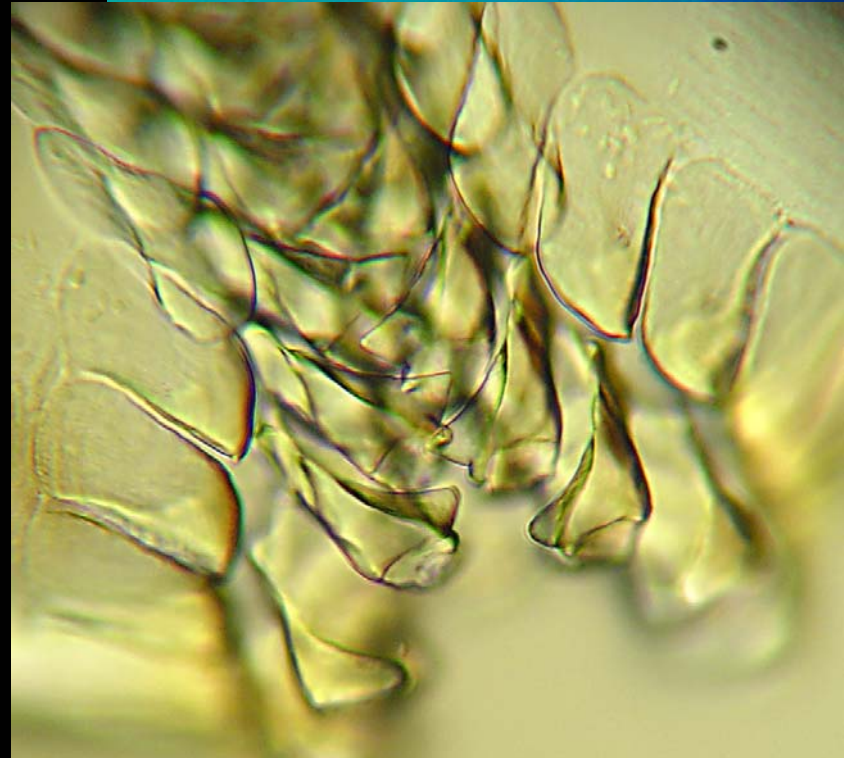
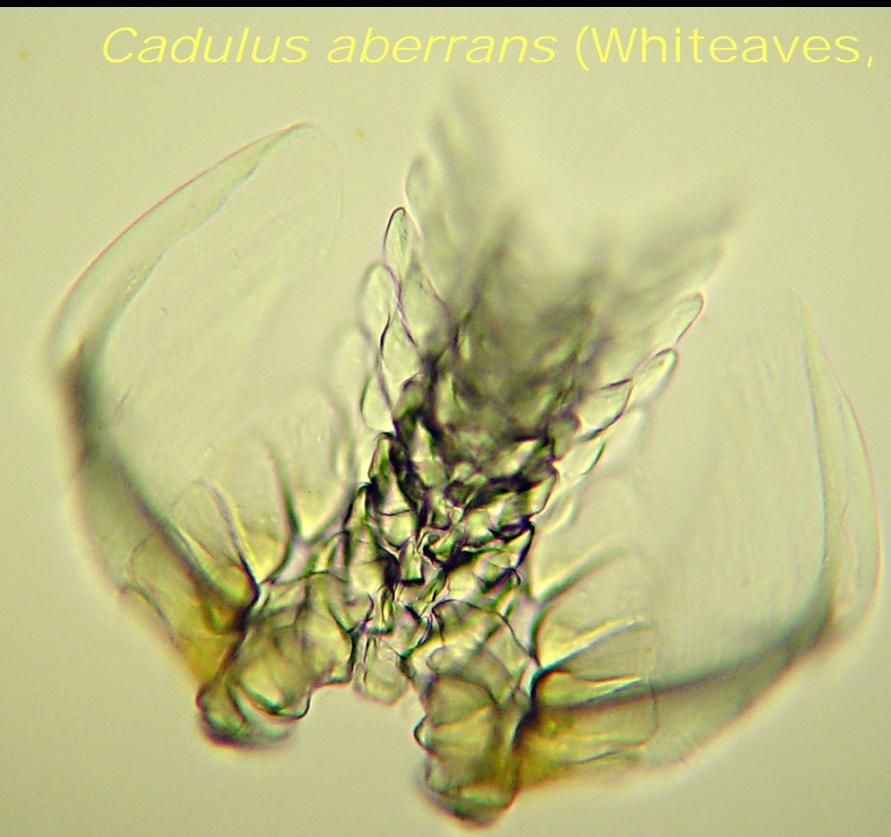


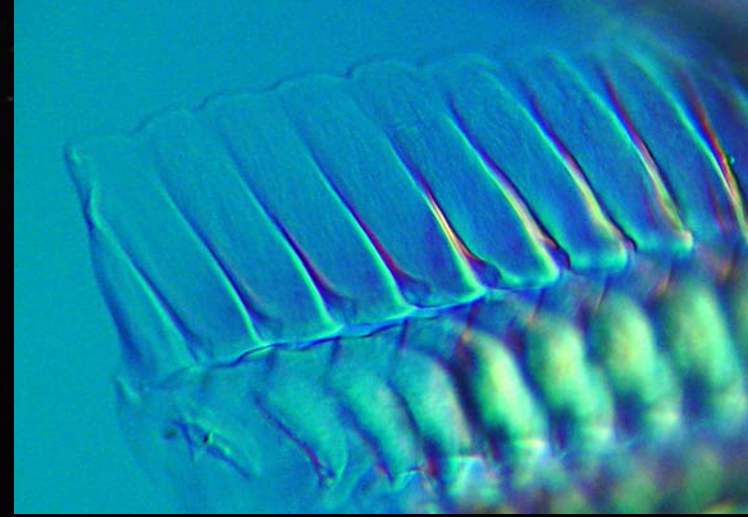
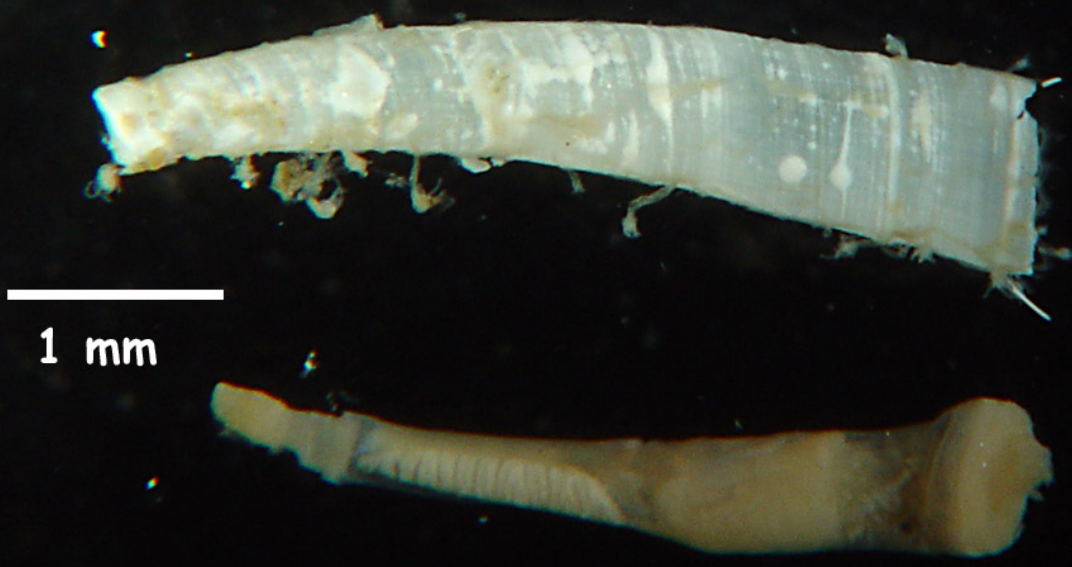
1 mm



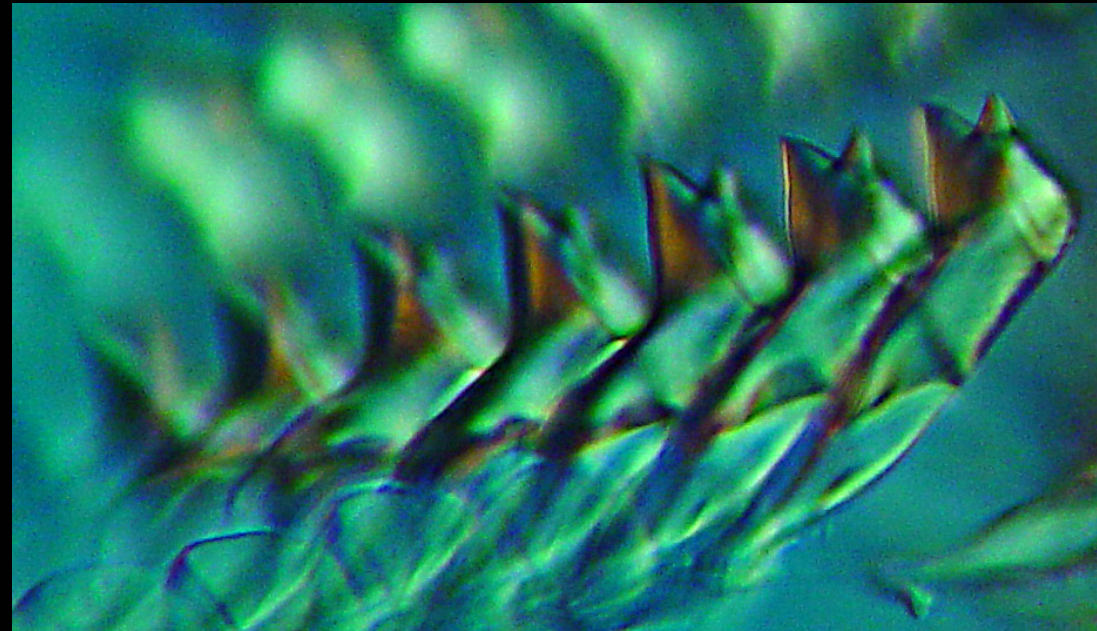


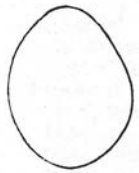
Cadulus aberrans (Whiteaves, 1887)





?*Compressidens stearnsii* Pilsbry & Sharp 1898





IB

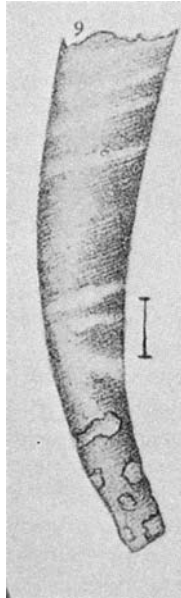


IA



IC

Emerson, 1962



Oldroyd, 1978



B'03 Sta. 4810, 01AUG03, 342m