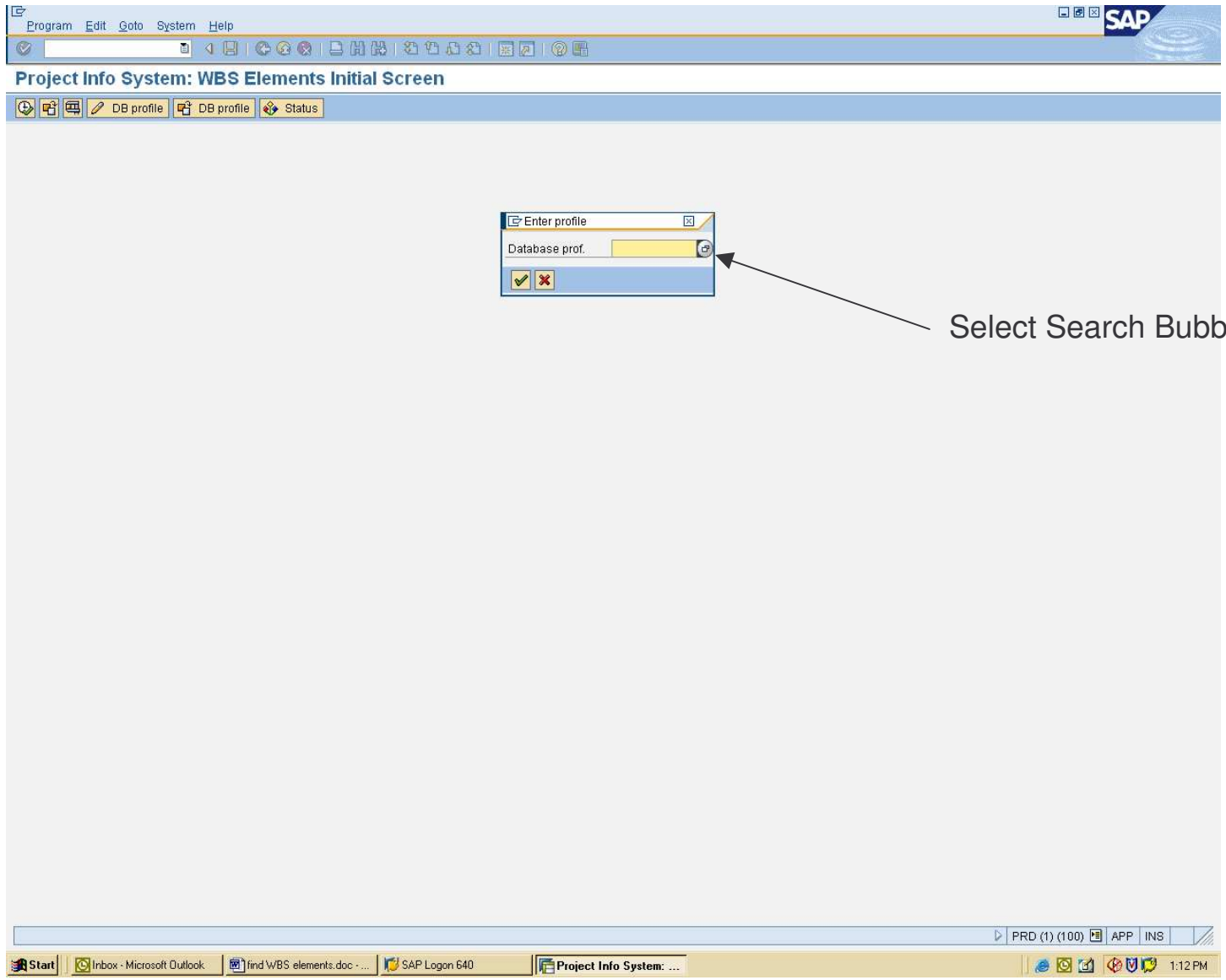


How To Find WBS Elements CN43N

The screenshot displays the SAP Easy Access interface. On the left, a 'Favorites' list contains various transactions, with 'CN43N - Overview WBS Elements' highlighted. Below this is the 'SAP menu' with categories like Office, Cross-Application Components, Logistics, Accounting, Human Resources, and Utilities Industry. The main area features a large circular logo with a mountain range silhouette, the text 'SCWA' in white, and 'PRD' in blue above it. The bottom status bar shows 'PRD (1) (100)' and 'APP INS'. The Windows taskbar at the very bottom includes the Start button, 'Inbox - Microsoft Outlook', 'Find WBS elements.doc...', 'SAP Logon 640', 'SAP Easy Access', and the system clock '1:11 PM'.



Select Search Bubble

Program Edit Goto System Help

Project Info System: WBS Elements Initial Screen

DB profile DB profile Status

Enter profile

Database prof.

Profile for logical database PSJ (1) 10 Entries found

Restrictions

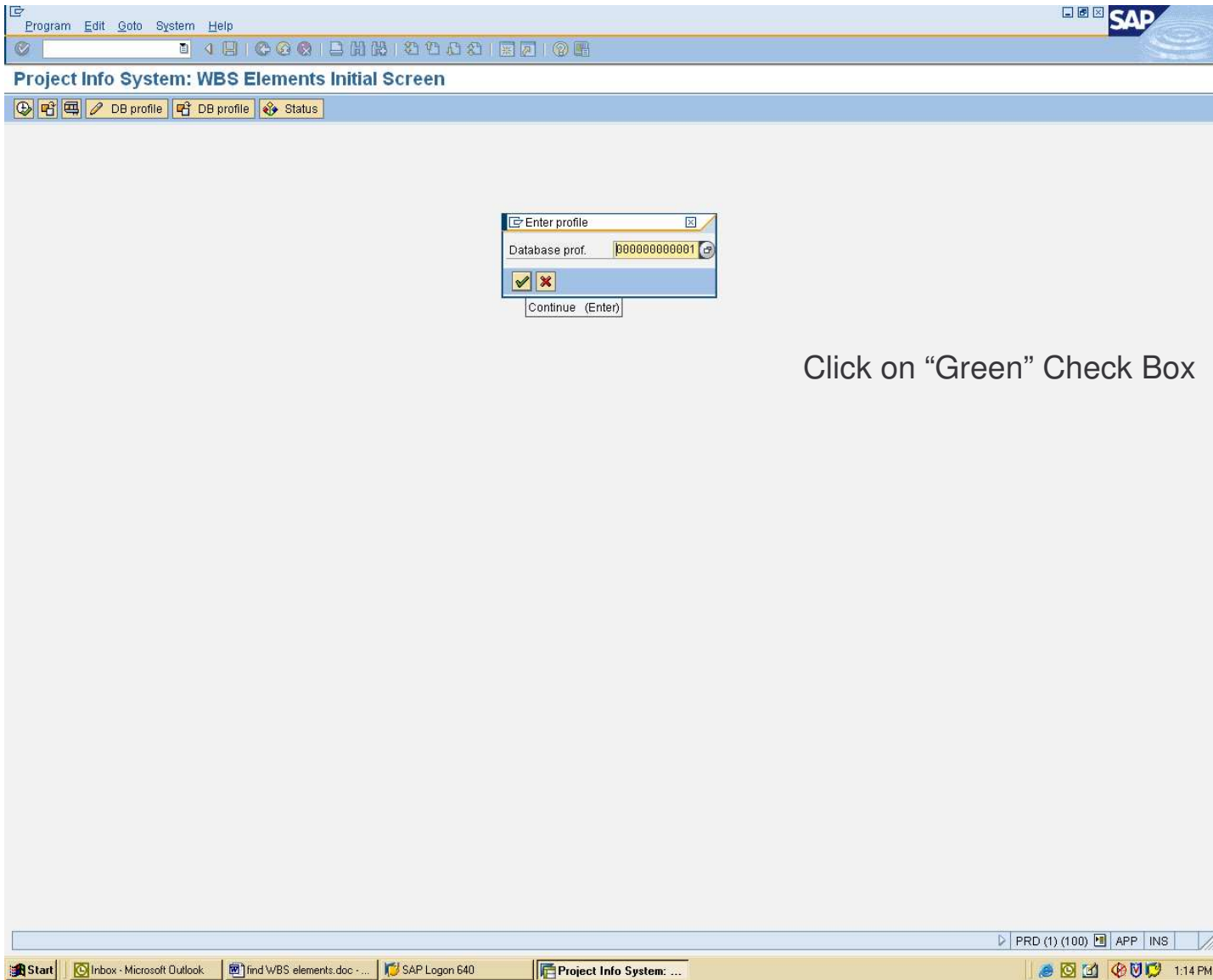
DB profile	Description
000000000001	Standard selection (structure)
000000000002	Standard selection (profit center)
000000000003	Standard selection (cost center hier.)
000000000004	Standard selection (summarization)
000000000005	Standard selection (cap. invest.program)
000000000006	Standard selection (sales view)
000000000007	Standard selection (standard structures)
SAPMEBPMP5	Project Selection for MEB Call in PMPS
SAPMPP000000	Standard Workforce Planning Profile
SAPPS_EV0001	Standard Earned Value Analysis Selection

10 Entries found

PRD (1) (100) APP INS

Start | Inbox - Microsoft Outlook | find WBS elements.doc - ... | SAP Logon 640 | Project Info System: WBS ... | Profile for logical dat... | 1:13 PM

Choose "Standard Selection"



Click on "Green" Check Box

Program Edit Goto System Help

Project Info System: WBS Elements Initial Screen

DB profile DB profile Status

Project Management Selections (DB profile: 000000000001)

Project to

WBS Element 060-08-00

Additional WBS element criteria

Level 1 to 99

Layout 1SAP

PRD (1) (100) APP INS

Start | Inboxes - Microsoft Outlook | find WBS elements.doc - ... | SAP Logon 640 | Project Info System: ... | 1:17 PM

Enter in the Budget Line info
(Or Use Search Bubble)

EXECUTE

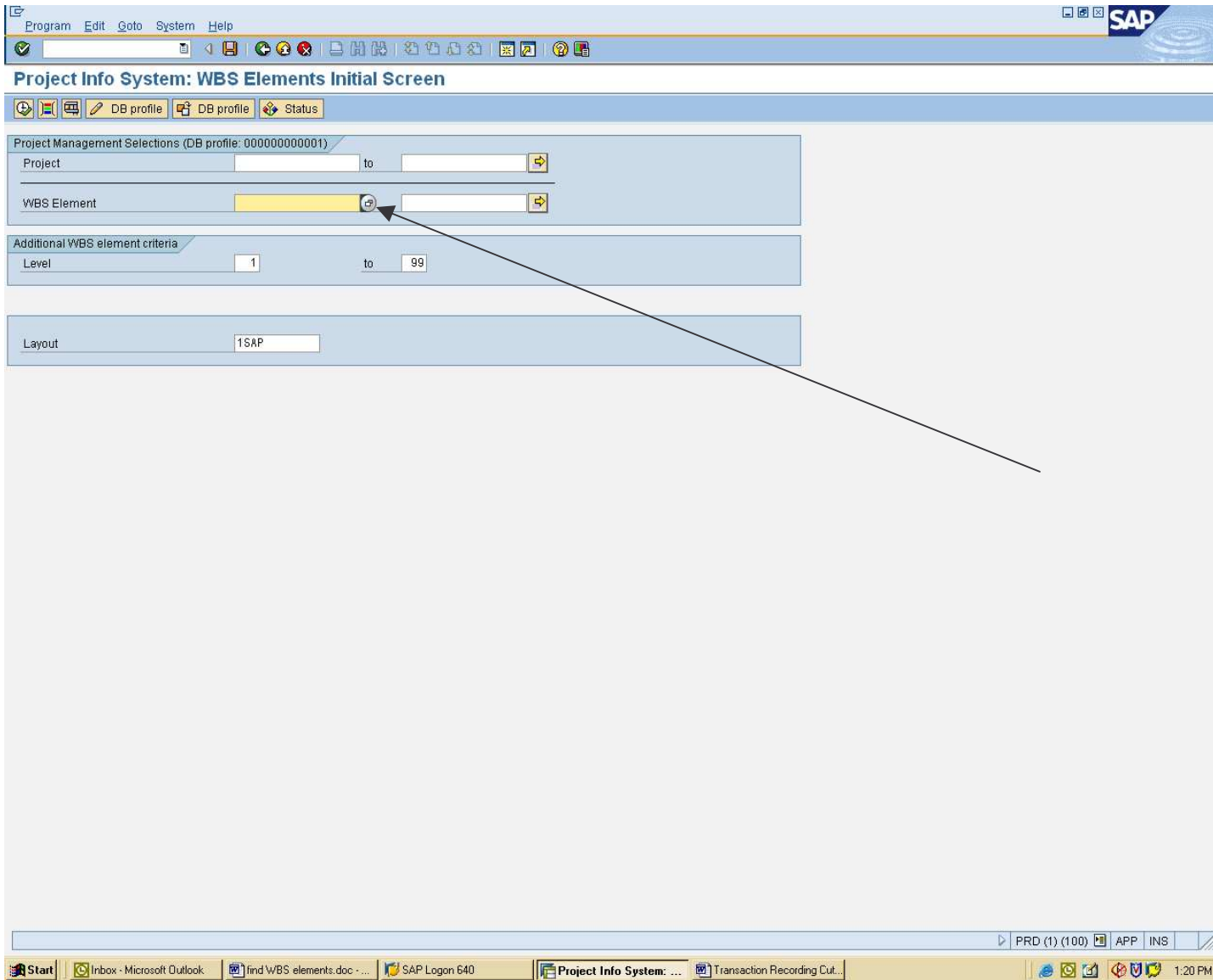
Project Info System: WBS Elements Overview



Project Definition	WBS Element	Description	Lvl	COAr	Respons.	Basic finish	Basic start	Dll
060-08-00	060-08-00	INSTRUMENTS NEW / REPLACEMENT	1	US01				
060-08-00	060-08-00-0004	QUOGUE RIVERHEAD PUMP STA WESTHAMPTO...	2	US01				
060-08-00	060-08-00-0002	2 NITRATE ANALYZERS & WELL LOCKOUT SYSTE...	2	US01				
060-08-00	060-08-00-0003	12 ULTRASONIC LEVEL TRANSMITTERS FOR LIM	2	US01				
060-08-00	060-08-00-0005	CHLORINE ANALYZER AT OLD NECK RD.	2	US01				
060-08-00	060-08-00-0006	WASTE METER REPLACE - IRON REMVL FILTER	2	US01				
060-08-00	060-08-00-0007	LONG SPRINGS RD PUMP STAT PH ANALZER U...	2	US01				
060-08-00	060-08-00-0008	2 NITRATE ANALYZERS/WELL LOCKOUT SYSTE...	2	US01				
060-08-00	060-08-00-0009	12 ULTRASONIC LEVEL TRANSMITTER LIME TNK	2	US01				
060-08-00	060-08-00-0010	LIME TANK LEVEL TRANSMITTERS (10 UNITS)	2	US01				
060-08-00	060-08-00-0011	INSTALL TABLET CHLOR. AT VARIOUS SITES	2	US01				

List of WBS Elements

How to use "Search" Bubble



Program Edit Goto System Help

SAP

Project Info System: WBS Elements Initial Screen

DB profile DB profile Status

Project Management Selections (DB profile: 000000000001)

Project [] to []

WBS Element

Additional WBS element criteria

Level


Layout

Work Breakdown Structure Element (WBS Element) (1)





WBS element: Project definition and description WBS element: short identification

Short ID (WBS elem) []


WBS Element []

Description  Rocky*

Maximum No. of Hits 500

Enter Description,
you can use the asterisk

 Green Enter

PRD (1) (100) APP INS

Start | Inbox - Microsoft Outlook | find WBS elements.doc - ... | SAP Logon 640 | Project Info System: ... | Transaction Recording Cut... | Work Breakdown Structur... | 1:21 PM

Program Edit Goto System Help

SAP

Project Info System: WBS Elements Initial Screen

Work Breakdown Structure Element (WBS Element) (1) 5 Entries found

WBS element: Project definition and description | WBS element: short identification

Project Management Selections (DB profile)

- Project
- WBS Element
- Additional WBS element criteria
- Level
- Layout

Short ID	WBS Element	Description
015-07-00-0032	015-07-00-0032	ROCKY POINT-1068" CONDOR,FLAMINGO,FALC
04-0276	040-27-6	ROCKY POINT LANDING ROAD
04-0350	040-35-0	ROCKY POINT LANDING ROAD
040-07-00-0034	040-07-00-0034	ROCKY POINT RD WELL 5 EAST MARION
045-08-00-0011	045-08-00-0011	ROCKY PT. RD. - REPLACEMENT WELL #1A

5 Entries found

PRD (1) (100) APP INS

Start | Inbox - Microsoft Outlook | find WBS elements.doc | SAP Logon 640 | Project Info System: WBS ... | Transaction Recording Cut... | Work Breakdown Stru... | 1:23 PM

Choose your project

Program Edit Goto System Help

SAP

Project Info System: WBS Elements Initial Screen

DB profile DB profile Status

Project Management Selections (DB profile: 000000000001)

Project to


WBS Element

Additional WBS element criteria

Level to

Layout

TO SEE OVERVIEW CLICK ON THE EXECUTE BUTTON



PRD (1) (100) APP INS

Start | Inboxes - Microsoft Outlook | find WBS elements.doc - ... | SAP Logon 640 | Project Info System: ... | Transaction Recording Cut... | 1:24 PM

Project Info System: WBS Elements Overview

Project Definition	WBS Element	Description	Lvl	COAr	Respons.	Basic finish	Basic start	Dll
045-08-00	045-08-00	REPLACEMENT OF EXISTING WELLS	1	US01				
045-08-00	045-08-00-0011	ROCKY PT. RD. - REPLACEMENT WELL #1A	2	US01				