

Before you Begin

Thank you for selecting the Maxtor Ultra ATA/133 PCI Adapter Card.

Handling Precautions

Adapter cards are sensitive to electrostatic discharge (ESD) damage. Handle the adapter card by its sides. Do not touch the printed circuit board assembly.

Do not connect/disconnect any cables when the system power is on.

Do not force or rock the adapter card connectors into or out of their connection sockets.

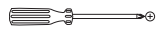
System Requirements

- Pentium II processor or higher
- Available PCI slot
- Windows 98, Me, NT 4.0 SP4, 2000, or XP

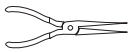
For maximum compatibility, Maxtor recommends that you visit the Microsoft Windows Update site at windowsupdate.microsoft.com for the latest Windows updates.

Note: This card is not Macintosh compatible. Mac-compatible Ultra ATA/133 cards are available from companies such as Sonnet Technologies (www.sonnettech.com).

Tools Required for Installation



Small (#2) Phillips Screwdriver



Small Needle-Nose Pliers



Operating System CD and Boot Diskette



Your System User Manual

Important – Please Read

- Make a backup copy of the files on any existing hard drive(s) prior to installing the new adapter card.
- In order to boot from a drive connected to the ATA card, you may need to change the Boot Order setting in your system BIOS so that "SCSI add-on card" or "Add-on IDE adapter" is first. See your system user manual for details.
- Uninstall any hard drive overlay software (Ontrack, EZ-Drive, or older versions of MaxBlast) on drives you wish to attach to the Ultra ATA/133 card. This may be done *after* you've installed the adapter card and hard drive. Refer to the following URL if the existing hard drive is from Maxtor or Quantum: <http://www.maxtorkb.com>.

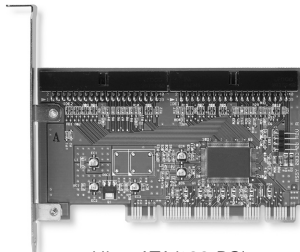
Warning: Removing overlay software from hard drives other than Maxtor can result in data loss. Please contact other hard drive manufacturers for their specific third party overlay removal procedures.

Fujitsu <http://www.fujitsu.com>
Seagate <http://www.seagate.com>
Western Digital <http://www.wdc.com>

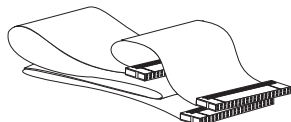
ATAPI Devices (DVD-ROM, Tape Backup)

If your ATAPI device (CD, DVD, Zip, or tape) is not UDMA 66, 100 or 133 compliant and is functioning properly, please leave it on its current ATA channel. These devices will not benefit from the additional performance provided by this card.

Included in this Kit



Ultra ATA/133 PCI Adapter Card



Ultra ATA Interface Cable (necessary for Ultra ATA 66/100/133 devices)



MaxBlast™ Installation CD

1 Install the Card

Adapter Card Installation

1. Turn off the power to your system and remove the system cover.
2. Unscrew and remove the inside slot cover of an available 32-bit PCI slot on the motherboard.
3. Handle the Ultra ATA/133 PCI Adapter Card by its sides and install it into the open slot (Figure 1).

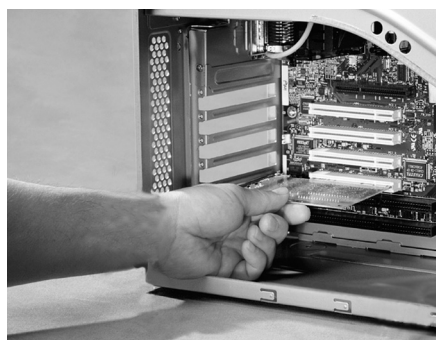


Figure 1
Installing the Adapter Card into a PCI Slot

4. If applicable, attach the LED cable connector on your system case to the LED connector on the Adapter Card (Figure 2). If your system LED connector does not light up, try re-connecting in the opposite direction.

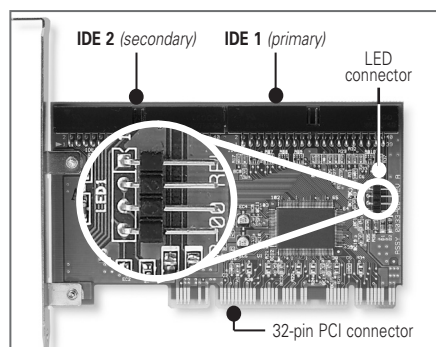


Figure 2
Adapter Card Connections

5. Fasten the adapter card bracket to the system case.

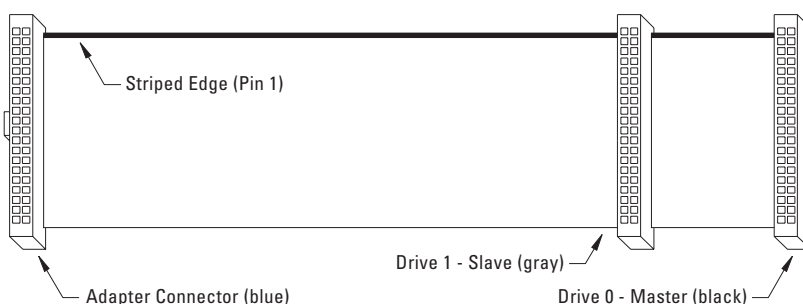


Figure 3
Ultra ATA Interface Cable

2 Connect Hard Drives

Windows NT/2000/XP Note: If you have an existing Windows NT, 2000, or XP installation, please skip to section 3: Install Drivers before connecting any drives to the ATA/133 card.

1. Configure the jumpers of the hard drive(s) you are preparing to install. Maxtor recommends setting all devices connected to the card as Cable Select. Refer to your hard drive manual or the drive label for the correct jumper settings.

Note: Do not set any jumpers that reduce the capacity of the drive such as an Alternate Capacity (AC) or Capacity Limitation (CLJ) jumper.

2. Install the hard drive in an available drive bay in your system. Refer to your system user manual for more information.
3. Connect the hard drive to the IDE1 connector on the ATA/133 card using the included Ultra ATA cable (Figure 3).

The blue cable connector should be plugged into the IDE1 connector on the card. The remaining connections depend on how many drives you are connecting to the card:

- a. If you are connecting a single drive configured as Cable Select or Master, plug the black cable connector into the ATA connector on the drive.
- b. If you are connecting two drives to the same cable, both devices must be configured as Cable Select, or one as Master and the other as Slave. Master devices must be connected to the black cable connector; Slave devices must be connected to the gray. See Figure 3 (below) or your hard drive manual for more details.
- c. If you are connecting more than two drives to the ATA/133 card, you will need to connect a separate Ultra ATA cable to the IDE2 connector on the card. This cable is included with the Maxtor Hard Drive Mounting Kit, available from your local Maxtor retailer or www.maxstore.com.

3 Install Drivers

The next step is to install the drivers that will allow your operating system to recognize the card.

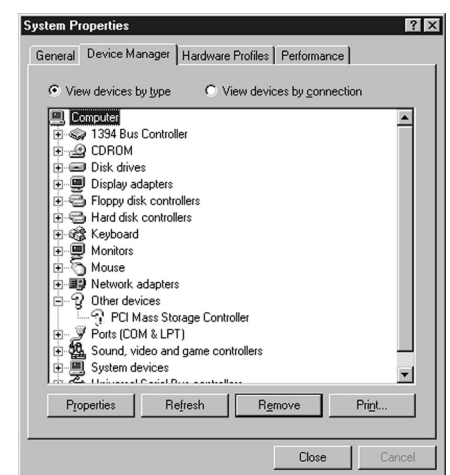
- **Option A:** Installing Drivers with a New Windows 98/Me Installation
- **Option B:** Installing Drivers with an Existing Windows 98/Me Installation
- **Option C:** Installing Drivers During a New Windows NT 4.0/2000/XP Installation
- **Option D:** Installing Drivers with an Existing Windows NT 4.0/2000/XP Installation

Note: If, upon booting, your system doesn't recognize the adapter card, change the card to a different PCI slot. Maxtor recommends using one of the first 3 slots nearest to the processor.

3 Install Drivers (cont.)

Option A: Installing Drivers with a New Windows 98/Millennium OS Installation

1. After installing the Ultra ATA/133 PCI Adapter Card and connecting the hard drives, format and partition the drives using the software included with the drives.
2. Install Windows 9x/Me using your Windows installation diskettes or CD.
3. After installation, go to the "Start" menu and select "Settings."
4. From the "Settings" menu, select "Control Panel."
5. In the "Control Panel" window, double-click on the "System" icon.



6. In the "System" window, select "Device Manager."
7. In the hierarchical display under "Other Devices" is a listing for "PCI Mass Storage Controller." Select it and then press the "Properties" button.



8. Select the "Driver" tab in the "Properties" window, choose "Update Driver..." and then press "Next."



3 Install Drivers (cont.)

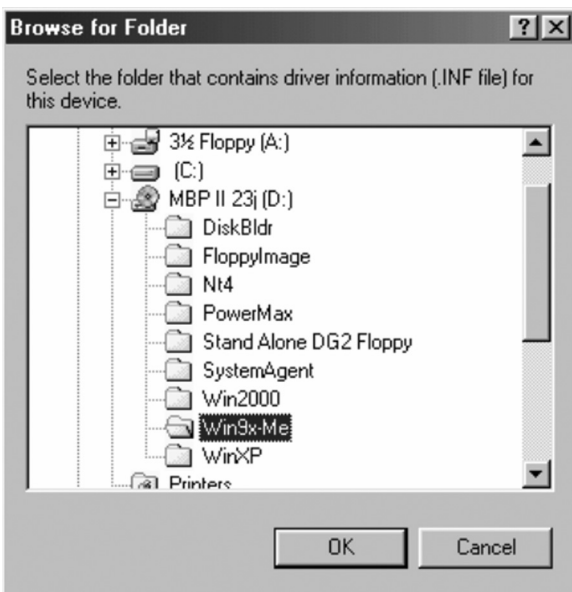
9. Select "Search for a better driver than the one your device is using now (recommended)," and press "Next."



10. Select the "Specify a location:" checkbox and press the "Browse..." button.



11. In the "Browse for Folder" window that appears, select your CD-ROM drive letter. Select the "Win9x-Me" folder, then click "OK."



12. Select the "Next" button on the "Update Device Driver Wizard" screen. Windows will display the name of the Ultra ATA/133 driver file found on your CD-ROM drive.

13. Press "Next", then "Finish," then "Yes" when asked if you want to restart your computer. Be sure to remove the MaxBlast CD from the CD-ROM drive before rebooting.

Option B: Installing Drivers with an Existing Windows 98/Me Installation

1. After installing the Ultra ATA/133 PCI Adapter Card and connecting the hard drives, power up the system and boot into Windows.
2. The "Add New Hardware Wizard" will appear, informing you that it has found a "PCI Mass Storage Controller."

Refer to steps 9 through 13 of Option A to complete the driver installation, then format and partition your hard drives using the software provided with the drives.

Option C: Installing Drivers during a New Windows NT 4.0/2000/XP Installation

Note: Before installing Windows NT, 2000, or XP, the Maxtor Ultra ATA/133 card drivers must be extracted from the MaxBlast CD.

1. Change the boot sequence or boot order in your system BIOS to "A>CD-ROM>C" or "Diskette Drive, CD-ROM, Hard Disk."
2. Boot your system to the MaxBlast CD, and select the "Create Maxtor Ultra ATA Driver Diskette" option.
3. Follow the onscreen prompts to create the driver diskette. When finished, eject the floppy.
4. Depending on the type of Windows installation media you have, perform one of the following OS installations:
 - a. **Floppy Install:** Boot the system using the Windows installation diskettes.
 - b. **CD-ROM Install:** Insert the Windows Install CD, reboot your system, and follow the on-screen prompts.
5. When prompted by the installer, press 'S' to Specify An Additional Device(s).
6. A list of devices will appear. Select "Other."
7. Insert the Maxtor Ultra ATA Driver Diskette into the floppy drive and press the "Enter" key.
8. Select the Maxtor Ultra ATA/133 adapter from the list that appears and press "Enter."
9. Follow the on-screen prompts to complete the Windows installation process.

Option D: Installing Drivers with an Existing Windows NT 4.0/2000/XP Installation

Note: The Ultra ATA/133 drivers must be installed in Windows on the boot drive (running off of an existing ATA port) **before** you connect any hard drives to the Ultra ATA/133 card.

Note: The screenshots under Option A are also applicable for an Option D installation.

1. Select "Settings" from "Start" menu.
2. Select "Control Panel" from the "Settings" menu.
3. Open the "System" control panel.
4. Click on the "Hardware" tab, then select "Device Manager..."
5. Click on the '+' sign next to "SCSI & Raid controllers" and double-click the "Mass Storage controller" item that appears.
6. Click the "Driver" tab, then press the "Update Driver..." button.
7. When the Upgrade Device Driver Wizard appears, click "Next."
8. Select "Search for a suitable driver for my device (recommended)" and click "Next."
9. Select the "Specify a location:" checkbox, and press the "Browse..." button.
10. Click the "Browse..." button.
11. In the "Locate File" window, browse to the folder on the root level of the Maxblast CD that contains the correct driver for your operating system. The folders are named as follows:

| | |
|---------------|---------|
| Windows XP: | WinXP |
| Windows 2000: | Win2000 |
| Windows NT: | NT4 |
12. Select the "ULTRA.INF" file, then click "Open."
13. Select "OK" in the "Upgrade Device Driver Wizard" window.
14. Choose the Maxtor Ultra ATA/133 adapter from the list that appears, and click "Next."
15. If Windows informs you that the driver has not been digitally signed by Microsoft, choose "Yes" to continue. Maxtor drivers have been fully tested for use on Windows.
16. Eject the MaxBlast CD and click "Finish" to restart your system.
17. After you have verified in the Device Manager that the card has been installed properly, shut down your system.
18. Attach your hard drives to the Ultra ATA/133 card, and format and partition them using the software included with the drives.

Driver Confirmation

To confirm that the driver was properly loaded, select "Settings" from the "Start" menu. Select "Control Panel," and then double-click on the "System" icon. Open the Device Manager and click on the '+' sign next to "SCSI Adapters" or "SCSI & RAID controllers." An entry for "Maxtor Ultra ATA/133 Adapter" should appear.

4 Register Your Product

Register your Maxtor Ultra ATA/133 PCI Adapter Card at www.maxtor.com

For more help:

- Go to the Maxtor Knowledge Base at www.maxtorkb.com
- Contact Maxtor Technical Support at www.maxtor.com

Product Warranty

Maxtor's warranty obligations are limited to the terms set forth: Maxtor warrants only to the original consumer purchaser that new Maxtor Ultra ATA/133 PCI Adapter Card products will be free from defects in material and workmanship for 1 year from the date of original purchase.

For a replacement Ultra ATA/133 PCI Adapter Card, the warranty on the replacement card is the remainder of the warranty on the original card or 90 days, whichever is longer. If you discover a defect, Maxtor will replace the Card at no charge to you, provided you return it during the warranty period, with transportation charges prepaid, to Maxtor in Ireland, Singapore or the USA.

Ultra ATA/133 PCI Adapter Cards must be properly packaged in Maxtor packaging or Maxtor approved packaging to obtain warranty service. Before returning a Maxtor Adapter, please contact Maxtor at: +353 1 204 1111 (in Europe) or 1-800-2MAXTOR (in U.S.) to obtain a Return Material Authorization (RMA) number. A copy of the receipt or a bill of sale bearing the appropriate Maxtor serial number and model number may be required for warranty service. The warranty applies only to the Maxtor Ultra ATA/133 PCI Adapter Cards that can be identified by the Maxtor trademark, trade name, serial number or logo affixed to them. Maxtor does not warrant any Card that is not manufactured by, for or with permission from Maxtor.

This warranty is not applicable to: Abnormal wear and tear; Abuse, unreasonable use, mistreatment, or neglect; Damage caused during installation of the Card; Damage caused by the equipment or system with which the Card is used; Damage caused by modification or repair not made or authorized by Maxtor; Cards whose Maxtor Serial Number and/or Material Number label has been removed, torn or defaced; Damage caused by use of non-Maxtor packaging; Damage caused by improper or improperly used packaging; Damage caused by lack of ESD protection; Cards that are determined to be stolen.

THIS WARRANTY AND REMEDIES SET FORTH ABOVE ARE EXCLUSIVE AND IN LIEU OF ALL OTHERS, WHETHER ORAL OR WRITTEN, EXPRESSED OR IMPLIED. MAXTOR SPECIFICALLY DISCLAIMS ANY AND ALL IMPLIED WARRANTIES, INCLUDING, WITHOUT LIMITATION, WARRANTIES OF MERCHANTABILITY AND FITNESS FOR A PARTICULAR PURPOSE AND AGAINST INFRINGEMENT. No Maxtor dealer, agent or employee is authorized to make any modification, extension or addition to this warranty.

MAXTOR IS NOT RESPONSIBLE FOR SPECIAL, INCIDENTAL, INDIRECT OR CONSEQUENTIAL DAMAGES RESULTING FROM ANY BREACH OF WARRANTY, OR UNDER ANY OTHER LEGAL THEORY, INCLUDING BUT

NOT LIMITED TO LOSS OF DATA, LOSS OF PROFITS, DOWNTIME, GOODWILL, DAMAGE OR REPLACEMENT OF EQUIPMENT AND PROPERTY, AND ANY COSTS OF RECOVERING, PROGRAMMING OR REPRODUCING ANY PROGRAM OR DATA STORED IN OR USED WITH MAXTOR DISK DRIVES OR MAXTOR'S ULTRA ATA/133 PCI ADAPTER CARDS.

Some states/jurisdictions do not allow the exclusion or limitation of incidental or consequential damages or exclusions of implied warranties, so the above limitations or exclusions may not apply to you. This warranty gives you specific legal rights, and you may also have other rights that vary from jurisdiction to jurisdiction.

Changes are periodically made to the information herein – which will be incorporated in revised editions of the publication. Maxtor may make changes or improvements in the product(s) described in this publication at any time and without notice.

Copyright© 2003 Maxtor Corporation. All rights reserved. Printed in the U.S.A. 1/03. MaxBlast™ is a trademark and Maxtor® is a registered trademark of Maxtor Corporation. Other brands or products are trademarks or registered trademarks of their respective holders.