

# High Performance Multi Purpose Sound System **TSM 15**



Die TSM 15 ist eine multifunktionale Lautsprecherbox der Oberklasse. Sie ist optimiert für Monitoranwendungen und kann aufgrund des drehbaren Hornes auch für klassische Fullrangeanwendungen oder für die Quermontage eingesetzt werden. Vielfältige Montagemöglichkeiten von Flugzubehör und das dezent moderne Design machen die TSM 15 auch für die Festinstallation interessant. Für Anwendungen bei denen größere Reichweiten gefordert sind, kann die TSM 15 auch mit einem engeren Abstrahlwinkel von 60° x 50° geordert werden.

## PRODUCT SPECIFICATIONS

<b>Speaker Components</b>	15" Nd / 1,4" Nd
<b>Description</b>	Multi Purpose Sound System
<b>Power</b> AES / Peak	600 W / 1800 W
<b>Impedance</b> nominal	8 Ω
<b>SPL</b> 1 W / Peak @ 1 m	98 dB / 131 dB
<b>Usable Range</b>	45 Hz - 18 kHz (-6 dB)
<b>Tuning Frequency</b> excursion minimum	50 Hz
<b>X - Overpoint</b> acoustical	1,0 kHz
<b>Coverage</b> horizontal / vertical	90° x 60° - rotatable 60° x 50° - rotatable (optional)
<b>Max. Splay Angle</b>	---
<b>Connectors</b>	2 x Neutrik Speakon NL4MP in/out Coding: 1 +/- HiMid, 2 +/- loop thru
<b>Handles</b>	2 x
<b>Rigging / Fittings</b>	3 x M10 / 6 x M8 35 mm pole mount
<b>Weight</b>	27 kg
<b>Size</b> height x width x depth	69,8 x 45,0 x 41,0 cm
<b>Order No.</b>	<b>00950/II/9060</b> (90° x 60°-version) <b>00950/II/6050</b> (60° x 50°-version)



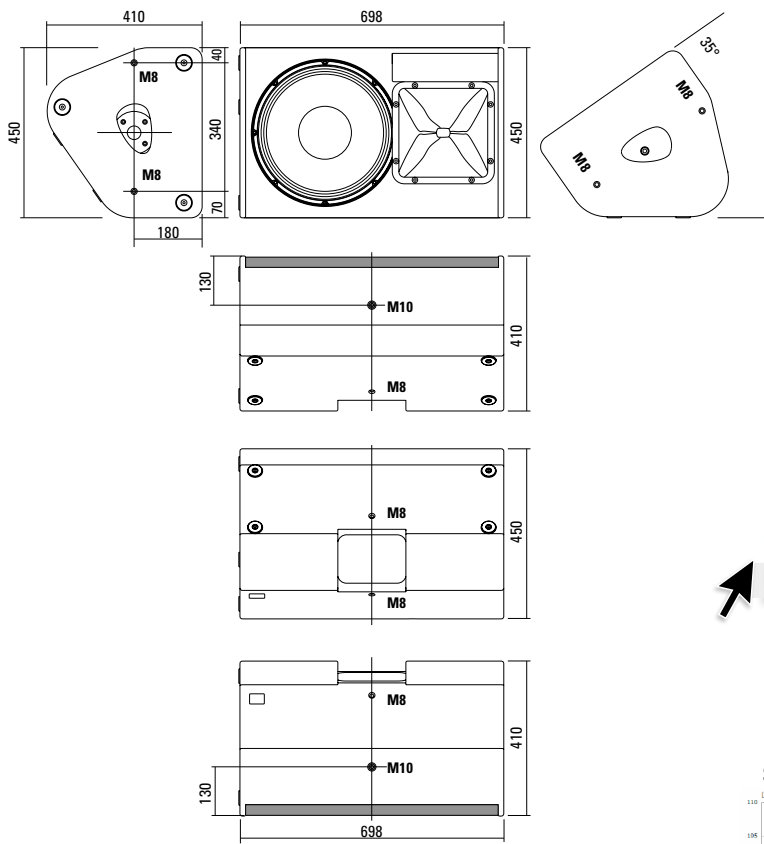
Drehbares 1,4" Metallhorn mit einem Abstrahlwinkel von 90° x 60° oder optional 60° x 50°.



In den Griff integrierte 35 mm Flanschhülse.



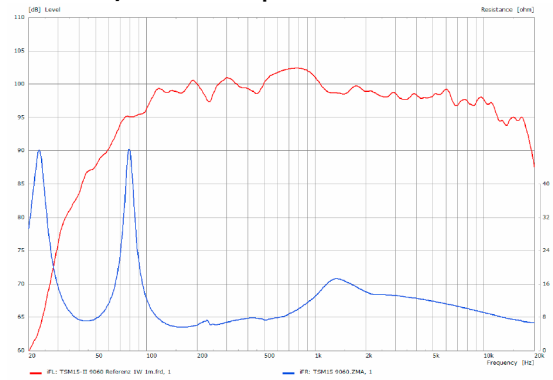
## DIMENSIONS



### Controller Setups:

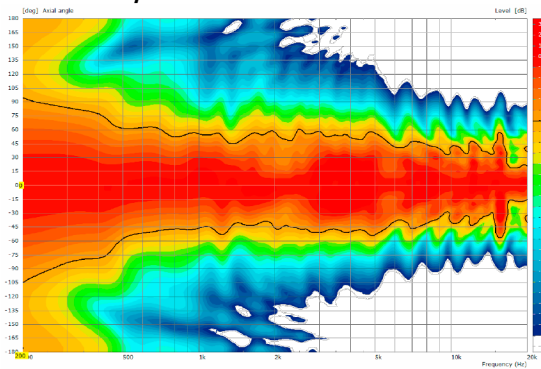
<https://www.seeburg.net/de/downloads>

### Sensitivity 1 W @ 1 m + Impedance

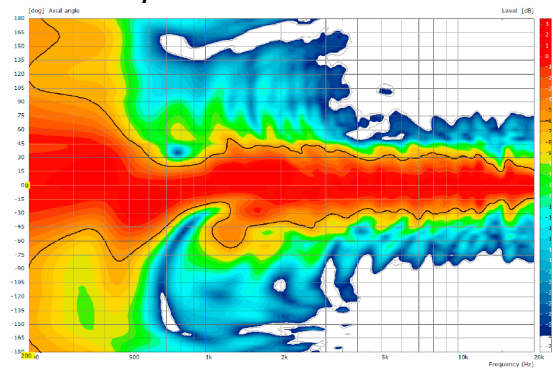


## COVERAGE PATTERNS

### 2D Directivity Plot - horizontal



### 2D Directivity Plot - vertical

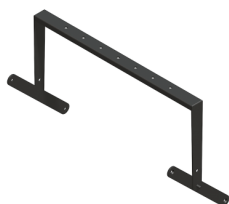


**Flying Bracket**



for TSM 15 / A 8 / F 8  
incl. screws  
(per unit: 2 pcs. M10 x 30 adjustable  
handle screws with axial bearing)  
Order No. **01217/set**

**Flying Bracket**



for TSM 15 / A 8  
horizontal alignment, incl. screws  
(per unit: 2 pcs. adapters, M10 hex  
lock nuts, flat- and rubber washers)  
Order No. **01217/H/set**

**Handle Screw**



for flying brackets,  
axial bearing  
M10 x 30  
Order No. **08374**

**Ergostyle Lobe Knob**



for flying brackets, M10 x 20,  
with grip, adjustable  
Order No. **08171**

**Rubber Washer**



for flying brackets,  
40 mm  
Order No. **01205**

**Flange**



35 mm Ø → M10,  
Order No. **08126**

**Doughty Quick Trigger Clamp**



max. load 250 kg  
Order No. **01223/250 kg**

**Ring Screw**



M10– DIN 580  
Order No. **73700**

**TV Spigot**



10 mm internal thread,  
28 mm Ø  
Order No. **08128**

**Steel Safety**



4 mm x 600 mm, black,  
max. load 10 kg (BGI 810-3),  
quick connector undetachably  
Order No. **01376/4**

**Chain Fastener**



VBS 7 mm  
Order No. **01378**



## ACCESSORIES TSM 15

### Wall Mount



for U-brackets, max. load 40 kg,  
incl. screws  
(M10 x 70 mm socket head screw,  
M10 hex lock nut and flat washer)

for 15" speakers

Order No. **08130/F/400**

### Wall Mount



with tilt unit, max. load 40 kg

Order No. **08130**

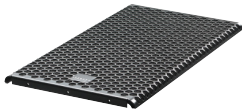
### Speaker Stand



K&M, incl. wind up,  
height 138,5 to 218 cm,  
max. load 50 kg,

Order No. **03011**

### Honeycomb Grille



for TSM 15 front grille version,  
for replacement, foam behind

Order No. **97075/hex/compl.**

### Cover



for TSM 15 / A 8,  
padded

Order No. **01240**

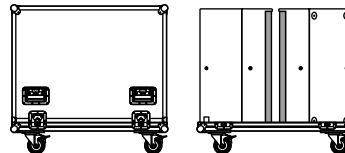
### Rain Cover



for TSM 15 / A 8,

Order No. **01240/outdoor**

### Flight Case



for 2 pcs. TSM 15 / A 8 / A 8 Sub,  
heavy duty, 9,0 mm birch multiplex,  
PVC coated, 6 x recessed sprung  
handles, 4 x butterfly catches, 4 x 100  
mm blue wheels, 2 pcs. with brake,  
interior lined with felt.

Order No. **16012/pro**

