

Phylogeography of the Asian softshell turtle *Amyda cartilaginea* (BODDAERT, 1770): evidence for a species complex

UWE FRITZ^{1*}, RICHARD GEMEL², CHRISTIAN KEHLMAIER¹, MELITA VAMBERGER¹, PETER PRASCHAG³

¹ Museum of Zoology, Senckenberg Dresden, A. B. Meyer Building, 01109 Dresden, Germany — ² Naturhistorisches Museum, Burgring 7, 1014 Wien, Austria — ³ Turtle Island, Turtle Conservation Center, Am Katzelnbach 98, 8054 Graz, Austria — * Corresponding author; uwe.fritz(at)senckenberg.de

Accepted 9.vi.2014.

Published online at www.senckenberg.de/vertebrate-zoology on 15.vii.2014.

Abstract

Using up to 2456 bp mtDNA and up to 2716 bp nDNA of fresh samples and short sequences of three mitochondrial genes of historical museum material, we examine the phylogeography of *Amyda cartilaginea*. This data set provides evidence for the existence of deeply divergent genetic lineages which we interpret as three distinct species, two of which are polytypic. On the Great Sunda Islands, the distribution ranges of the two subspecies of *Amyda cartilaginea* (BODDAERT, 1770) sensu stricto and of an undescribed species match palaeodrainage systems. *Amyda cartilaginea cartilaginea* occurs in the East Sunda palaeodrainage, with records in eastern Borneo and Java. Also a record from Sulawesi, most probably not representing a native population, refers to *A. c. cartilaginea*. In the North Sunda palaeodrainage (Sumatra, western Borneo) lives *Amyda cartilaginea maculosa* subsp. nov., which is described herein. One sample from the Baram river (Sarawak, Malaysia) is genetically highly distinct and represents a new species. We refrain from naming this taxon until more material becomes available for morphological characterization. For the continental populations, we resurrect the species *Amyda ornata* (GRAY, 1861). We identify Asian softshell turtles from the Mekong drainage with the nominotypical subspecies, while the genetically distinct populations from Thailand and Myanmar are assigned to *Amyda ornata phayrei* (THEOBALD, 1868). Samples from Bangladesh are also genetically distinct and represent an undescribed subspecies and the first country record for *Amyda*.

Key words

Amyda cartilaginea cartilaginea; *Amyda cartilaginea maculosa* subsp. nov.; *Amyda ornata ornata*; *Amyda ornata phayrei*; Great Sunda Islands; Southeast Asia, Subspecies; Taxonomy; Testudines; Trionychidae.

Introduction

Among extant turtles, softshells (Trionychidae) belong to the species which deviate most from the general chelonian body plan. Softshell turtles possess a much reduced bony shell and the shell surface is covered by a leathery skin instead of a horny epidermis. The snout is a proboscis resembling a pig nose, and trionychids are the only turtles having fleshy lips. Softshells are highly aquatic, and their paddle-like feet possess extensive webbing. Each foot is

armed with three strong claws (MEYLAN 1987; ERNST et al. 2000; DELFINO et al. 2010) used for killing and dissecting prey. Trionychids belong to the fastest swimming freshwater turtles (WEBB 1962; MEYLAN 1987) with good manoeuvre skills, making many species vigorous predators of fish and crayfish (DELFINO et al. 2010). While most softshell turtles are thought to be completely confined to freshwater habitats (ERNST et al. 2000), two species are

known to enter regularly marine habitat (*Pelochelys cantorii*: DAS 2008; *Trionyx triunguis*: SHANAS *et al.* 2012). The greatest diversity of extant trionychids is found in Asia, where both subfamilies occur (Cyclanorbinae and Trionychinae, with 3 and 21 species in 1 and 10 genera, respectively). This corresponds to 43% of all seven extant cyclanorbine species and 88% of all 24 extant trionychine species. The remaining extant softshell turtles occur in Africa (2 cyclanorbine genera with 4 species) and North America (1 trionychine genus with 3 species). The eponymous genus *Trionyx* (Trionychinae) occurs mainly in Africa but reaches in the eastern Mediterranean region also the Asian continent (*cf.* FRITZ & HAVAŠ 2007; VAN DIJK *et al.* 2012; LE *et al.* 2014).

External morphology of softshell turtles is often only of limited utility for taxonomy and systematics, because drastic ontogenetic changes in coloration and body proportions blur diagnostic characters. Another problem is posed by the fact that many species reach considerable sizes with shell lengths beyond 30–40 cm, so that adult individuals are rarely present in natural history museums. Therefore, much emphasis was given to osteological characters. While this has allowed a pioneering assessment of the phylogenetic relationships (MEYLAN 1987), the rarity of material of many taxa hampered a detailed understanding of the species diversity. Thus, it is not surprising that several studies using molecular genetic approaches have gained a much refined understanding of trionychid taxonomy (WEISROCK & JANZEN 2000; ENGSTROM *et al.* 2002, 2004; PRASCHAG *et al.* 2007, 2011; MCGAUGH *et al.* 2008; FRITZ *et al.* 2010; STUCKAS & FRITZ 2011; LIEBING *et al.* 2012; LE *et al.* 2014) and resulted in the recognition of six additional species (*Chitra chitra*, *C. vandijki*, *Lissemys ceylonensis*, *Pelodiscus axenaria*, *P. maackii*, *P. parviformis*; ENGSTROM *et al.* 2002; MCCORD & PRITCHARD 2003; FRITZ *et al.* 2010; PRASCHAG *et al.* 2011; STUCKAS & FRITZ 2011) and two additional subspecies (*Chitra chitra javanensis*, *Lissemys punctata vittata*; ENGSTROM *et al.* 2002; MCCORD & PRITCHARD 2003; PRASCHAG *et al.* 2011) compared to previous morphology-based assessments (WEBB 1982; MEYLAN 1987). However, molecular studies have not yet been conducted for the majority of trionychid species, so that the existence of further distinct, but currently unrecognized, taxa is most likely. If it is considered that softshells are seriously threatened by massive overexploitation for food and Traditional Chinese Medicine (AULIYA 2000; VAN DIJK & PALASUWAN 2000; KUCHLING *et al.* 2004; CHEN *et al.* 2009), such bad taxonomy may even contribute to the loss of species due to lacking legislative protection based on erroneous categories of threat. Thus, a better understanding of the taxonomy of many softshell turtles is of paramount interest for conservation, although current export practices of samples for scientific study are in this context often completely counterproductive.

The present investigation illustrates this situation and may serve as an exemplar study for turtle species classified in low IUCN categories of threat based on bad taxonomy (*cf.* PETZOLD *et al.* 2014 for another case

study). As currently understood the Asian softshell turtle, *Amyda cartilaginea* (BODDAERT, 1770), is a widely distributed monotypic species (ERNST *et al.* 2000; FRITZ & HAVAŠ 2007; VAN DIJK *et al.* 2012) and listed in the category “Vulnerable” by the IUCN (2013). Asian softshells are large-sized, with adult shell lengths exceeding 40 cm (VAN DIJK 1992) and a reported maximum shell length of 83 cm (ERNST *et al.* 2000). *Amyda cartilaginea* is distributed in northeastern India (Mizoram), Myanmar, Laos, Vietnam, Cambodia and Thailand and ranges through the Malay Peninsula to Sumatra, Java and Borneo (IVERSON 1992; VAN DIJK *et al.* 2012); populations on the Lesser Sunda Islands and Sulawesi are thought to be introduced (KOCH *et al.* 2008; VAN DIJK *et al.* 2012), and this could be also true for Yunnan, China (KUCHLING 1995).

Even though *A. cartilaginea* is generally accepted as a monotypic species, VAN DIJK (1992) distinguished three morphologically distinguishable forms which could represent either distinct taxa or, favoured by VAN DIJK (1992), a single variable species. Here we use fresh samples representing these morphotypes and most of the distribution range of *A. cartilaginea* to generate up to 2456 bp mitochondrial DNA (mtDNA) and up to 2716 bp nuclear DNA (nDNA). Our material also includes samples from three large softshells from the Chittagong region (Bangladesh) which were morphologically identified as *A. cartilaginea*, although the species was not recorded from that country yet (VAN DIJK *et al.* 2012). In addition, we supplement our data set with historical DNA sequences from museum specimens (up to 241 bp mtDNA). We analyse these DNA sequences using standard approaches (Maximum Likelihood, Bayesian Inference) and try to correlate the revealed differentiation pattern with nominal taxa currently synonymised with *A. cartilaginea*. In doing so, we provide for the first time a molecular genetic assessment of the phylogeography and taxonomy of *A. cartilaginea*.

Material and methods

Sampling and laboratory procedures

For the present study, 19 fresh blood or tissue samples of *Amyda cartilaginea* plus 14 tissue samples from historical museum specimens were used (Table S1). For fresh material, three mitochondrial and three nuclear DNA fragments were chosen, which have been successfully used in softshell turtles for phylogenetic and phylogeographic purposes (WEISROCK & JANZEN 2000; ENGSTROM *et al.* 2002, 2004; PRASCHAG *et al.* 2007, 2011; MCGAUGH *et al.* 2008; FRITZ *et al.* 2010; STUCKAS & FRITZ 2011; LIEBING *et al.* 2012; LE *et al.* 2014), namely, part of the 12S ribosomal RNA gene (12S rRNA or 12S), the complete

cytochrome *b* gene (*cyt b*) plus adjacent DNA coding for tRNA-Thr, part of the 3' half of the NADH dehydrogenase subunit 4 gene (ND4) plus adjacent DNA coding for tRNAs, part of the gene coding for oocyte maturation factor Mos (*Cmos*), part of the gene coding for ornithine decarboxylase (ODC), and part of intron 1 of the orphan G protein-coupled receptor gene R35 (R35). For PCR and sequencing of the 12S, ND4, *Cmos*, ODC and R35 fragments of fresh samples, the same primer pairs were applied as in LIEBING et al. (2012). However, for the *cyt b* gene, which was amplified and sequenced in two parts overlapping by 383 bp, the primer pairs *CytbG* + mt-E-Rev2 and mt-c-For2 + mt-f-na (SPINKS et al. 2004; FRITZ et al. 2006) were used.

Since DNA from historical museum specimens is much degraded and fragmented, only short fragments corresponding to highly variable regions of the three mitochondrial markers 12S, *cyt b* and ND4 were sequenced using new primers (Table S2). These primers were designed using consensus sequences of the fresh *Amyda* samples.

Total genomic DNA of fresh samples was extracted using the innuPREP DNA Mini Kit (Analytik Jena AG, Jena, Germany). PCR was performed using 1–5 µl of DNA extraction in a 20 µl volume containing 0.5 µM of each primer, 0.5 mM of each dNTP (Fermentas, St. Leon-Rot, Germany), 1 unit of *Taq* polymerase (Bioron DFS-Taq, Bioron GmbH, Ludwigshafen, Germany), 2 µl PCR buffer 10× incl. MgCl₂, and ultrapure H₂O. For applied PCR programs, see Table S3. PCR products were visualised on a 1% agarose gel and cleaned up using the ExoSAP-IT reagent (USB Europe GmbH, Staufen, Germany; 1:20 dilution, modified protocol: 30 min at 37°C, 15 min at 80°C). If necessary, DNA bands were alternatively excised from a 2% agarose gel and purified using the peqGOLD Gel Extraction Kit (PEQLAB Biotechnologie GmbH, Erlangen, Germany). For cycle sequencing the same forward and reverse primers were used as for PCR. The total reaction volume of 10 µl contained 2 µl sequencing buffer, 1 µl premix, 0.5 µM of the respective primer, 0.5–6 µl DNA template, and ultrapure H₂O. Using the ABI PRISM Big Dye Terminator v.3.1 Cycle Sequencing Kit (Applied Biosystems, Foster City, CA, USA), 25–30 cycles were run at 96°C for 10 s, 50°C for 5 s and 60°C for 4 min. Reaction products were purified using Sephadex™ G-50 fine (GE Healthcare, München, Germany). Sequencing was performed on an ABI 3130xl Genetic Analyser (Applied Biosystems).

Extraction of historical material was carried out in a clean room, which is physically isolated from all other DNA processing facilities. Prior to this study, no *Amyda* material had been studied there (fresh samples used in the present study were processed in the main laboratory, which is located in another building). All work in the clean room was performed in three different HERA-safe KSP 9 safety cabinets (Thermo Fisher Scientific, Waltham, MA, USA) corresponding to the working steps sample preparation, DNA extraction, and PCR setup. Safety cabinets and clean room were irradiated with

UV light for at least 6 h before and after every working step. For DNA extraction, the sbeadex forensic kit (LGC Genomics, Berlin, Germany) was used according to the manufacturer's standard protocol. PCR setup was identical to fresh samples, except that 1 µl of Mg²⁺ and 0.2 µl (20 ng/µl) of Bovine Serum Albumin (Fermentas) were added to each sample. Primers and PCR programs used for historical samples are summarized in Tables S2 and S3. Thermocycling was carried out in the main laboratory, and a positive control (containing DNA of a fresh *Amyda* sample, extracted with standard methods in the normal DNA processing facility) and a negative control (all reagents except the DNA template) were always processed downstream along with the historical samples. Additional working steps were identical as for fresh material. The lengths of the resulting gene fragments (after primers were trimmed) were 63 bp for 12S, 108 bp for *cyt b*, and 70 bp for ND4 (Table S2).

Alignment and phylogenetic analyses, uncorrected *p* distances

Obtained DNA sequences were checked manually for base-calling errors and aligned in BIOEDIT 7.0.9.0 (HALL 1999). For phylogenetic analyses, our newly generated sequences were concatenated and merged with previously published homologous sequences of *Dogania subplana*, *Palea steindachneri*, *Pelodiscus maackii* and all species of *Nilssonina* (Table S1). According to ENGSTROM et al. (2004), *Nilssonina* sensu lato (see PRASCHAG et al. 2007), *D. subplana*, *Palea steindachneri* and *Pelodiscus* represent the successive sister taxa of *Amyda*. Two data sets were used for calculations. One alignment of 2456 bp length comprised only the concatenated mtDNA sequences. In the second alignment of 5172 bp length, nDNA sequences were added as far as available. For phylogenetic analyses, the alignments were partitioned by gene. However, all DNA coding for tRNAs was lumped together in one partition, so that 394 bp corresponded to 12S, 1140 bp to *cyt b*, 710 bp to ND4, 212 bp to the DNA coding for tRNAs, 590 bp to *Cmos*, 1081 bp to ODC, and 1045 bp to R35.

Phylogenetic relationships were then inferred using Bayesian and Maximum Likelihood (ML) approaches. For Bayesian analyses, the best evolutionary model for each partition was established by the Bayesian Information Criterion in JMODELTEST 2.3 (POSADA 2008), resulting in the TrN+G model for 12S, the TIM2+I model for *cyt b*, the TrN+G model for ND4, the TPM3uf+G model for the merged tRNAs, the K80+I model for *Cmos*, the F81 model for ODC, and the HKY model for R35. Calculations were performed with MRBAYES 3.2.1 (RONQUIST et al. 2012) using two parallel runs (each with four chains) and default parameters. The chains ran for 10 million generations with every 100th generation sampled. The calculation parameters were analysed using a burn-in of 2.5 mil-

lion generations to assure that both runs converged. Subsequently, only the plateau of the most likely trees was sampled using the same burn-in, and a 50% majority rule consensus tree was generated. The posterior probability of any individual clade in this consensus tree corresponds to the percentage of all trees containing that clade, and is a measure of clade frequency and credibility.

ML analyses were conducted using RAxML 7.2.8 (STAMATAKIS 2006) and the default GTR+G model. Five independent ML searches were run using different starting conditions and the fast bootstrap algorithm to explore the robustness of the branching patterns by comparing the best trees. Subsequently, 1000 non-parametric thorough bootstrap replicates were calculated and the values plotted against the best tree.

In addition, average uncorrected p distances were obtained for the mitochondrial genes using MEGA 6.06 (TAMURA *et al.* 2013) and the pairwise deletion option. For comparative purposes, all *Nilssonina* sequences from PRASCHAG *et al.* (2007) and LIEBING *et al.* (2012) were included in these calculations.

Results

Phylogenetic inference

The topologies of the ML and Bayesian trees were for each data set (mtDNA *vs.* mtDNA combined with nDNA) completely identical, and there were only minor differences in the topologies when the mitochondrial trees are compared to the trees based on concatenated mitochondrial and nuclear DNA.

With respect to the phylogenetic relationships of *Amyda*, all analyses found the *Amyda* sequences with high support monophyletic (Fig. 1), and *Nilssonina*, *Dogania subplana* and *Palea steindachneri* constituted, with high support, the successive sister taxa. Parenthetically it may be noted that there is no evidence for a close relationship of *Nilssonina formosa* and *Amyda*, as suggested by VAN DIJK (1992) who speculated that both taxa could represent the same genus. *Nilssonina formosa* was placed together with the remaining four *Nilssonina* species in a well-supported monophylum. Within *Amyda*, three deeply divergent clades (A, B, C) were revealed, two of which showed further structuring.

A single sample from the Baram river, Sarawak (Borneo), was highly distinct and sister to all remaining samples of *Amyda* (clade 1/A in Fig. 1). The remaining samples grouped in five additional terminal clades in the analyses based on mtDNA alone (clades 2–6 in Fig. 1), which clustered in the two more inclusive clades B and C. One of the terminal clades of clade B (clade 3) was only weakly supported and not found in the calculations

using concatenated mtDNA and nDNA. Then, the sequences of the respective samples were placed in clade B in a basal polytomy together with the well-supported clade 2 (trees not shown). In addition, *N. formosa* constituted in the trees based on mtDNA and nDNA, with high support, the sister taxon of the remaining *Nilssonina* species (see also LIEBING *et al.* 2012). Otherwise the trees resulting from the merged mtDNA and nDNA sequences were identical to the trees based on mtDNA alone, and support values showed only negligible differences.

Within clade B, samples from Java, Sulawesi and most samples from Kalimantan (Borneo), plus some samples of unknown geographical provenance, were consistently placed in clade 2. In analyses of mtDNA alone, clade 2 was sister to clade 3 which contained also samples from Borneo (Kalimantan, Sarawak) and one sample from Sumatra. Clade B was sister to the moderately supported clade C comprised of the three well-supported terminal clades 4–6. The first of these terminal clades corresponded to samples from Bangladesh (clade 4), the second to samples from Thailand, China (Yunnan) and Myanmar plus one sample without geographical provenance (clade 5), and the third to samples from Cambodia and Laos (clade 6).

Uncorrected p distances

When uncorrected p distances of the different clades of *Amyda* are compared to *Nilssonina* it is obvious that some, but not all, of the six terminal clades show pairwise divergences resembling different *Nilssonina* species (Tables 1–3). For *Nilssonina*, the lowest values are found between the sympatric sister species *N. hurum* and *N. nigricans*, with 0.83% sequence divergence for 12S, 4.87% for *cyt b*, and 3.21% for ND4. The divergences of the single softshell from the Baram river (clade 1/A) clearly exceed these values for each gene, while the pairwise divergences for the terminal clades 2–6 are lower. Yet, most values still resemble the species divergences within *Nilssonina*, even though a sometimes contradictory pattern emerges for the individual genes. The divergences between the more inclusive clades B and C generally exceed or, at least, closely resemble the divergence values between *N. hurum* and *N. nigricans*.

Discussion

We discovered considerable phylogeographic structure within what is currently understood as the monotypic species *Amyda cartilaginea*. Using up to 2456 bp mtDNA and 2716 bp nDNA, we found three deeply divergent

Table 1. Uncorrected *p* distances (percentages) for the partial 12S gene (394 bp) of *Amyda*, *Nilssonina* and allied softshell turtles. Data for *Nilssonina* species are from PRASCHAG et al. (2007) and LIEBING et al. (2012). Between-group distances below diagonal, within-group distances along diagonal in boldface. Critical divergence value of *Nilssonina hurum* and *N. nigricans* bears asterisk.

	<i>n</i>	1 (A)	2	3	4	5	6	B	C	<i>for</i>	<i>gan</i>	<i>hur</i>	<i>lei</i>	<i>nig</i>	<i>sub</i>	<i>ste</i>	<i>maa</i>
<i>Amyda</i> – 1 (A)	1	—															
<i>Amyda</i> – 2	11	3.47	0.38														
<i>Amyda</i> – 3	4	1.98	3.29	0.53													
<i>Amyda</i> – 4	3	3.17	2.39	2.62	0												
<i>Amyda</i> – 5	10	4.77	4.23	5.51	0.93	0											
<i>Amyda</i> – 6	4	4.76	3.50	4.58	0.53	0.13	0										
<i>Amyda</i> – 2+3 (B)	15	3.08	—	—	—	—	—	1.61									
<i>Amyda</i> – 4+5+6 (C)	17	4.49	—	—	—	—	—	4.01	0.29								
<i>Nilssonina formosa</i>	2	7.94	6.38	8.22	4.63	6.96	4.63	6.87	6.00	0.26							
<i>Nilssonina gangetica</i>	18	11.29	6.16	8.14	4.24	7.79	4.51	6.69	6.39	3.23	0						
<i>Nilssonina hurum</i>	11	9.52	4.99	7.24	3.74	5.72	3.74	5.59	4.90	2.43	2.10	0.05					
<i>Nilssonina leithii</i>	2	9.68	5.28	6.08	4.26	6.98	4.52	5.49	5.92	2.46	2.33	2.31	0				
<i>Nilssonina nigricans</i>	18	9.70	5.43	7.68	4.53	6.20	4.53	6.03	5.51	3.24	2.32	0.83*	3.08	0.05			
<i>Dogania subplana</i>	1	9.52	10.16	6.24	6.93	10.77	7.47	9.12	9.31	7.40	6.77	6.52	7.03	6.71	—		
<i>Palea steindachneri</i>	1	6.35	6.79	7.39	7.16	9.29	7.69	6.95	8.54	7.36	8.29	8.01	7.51	8.25	8.05	—	
<i>Pelodiscus maackii</i>	1	12.70	13.12	9.78	9.28	13.53	9.81	12.23	11.91	9.95	10.62	9.82	10.08	10.57	10.91	6.98	—

Table 2. Uncorrected *p* distances (percentages) for the *cyt b* gene (1140 bp) of *Amyda*, *Nilssonina* and allied softshell turtles. DNA coding for tRNA-Thr was removed so that only protein-coding DNA was used for distance calculations. For further explanations, see Table 1.

	<i>n</i>	1 (A)	2	3	4	5	6	B	C	<i>for</i>	<i>gan</i>	<i>hur</i>	<i>lei</i>	<i>nig</i>	<i>sub</i>	<i>ste</i>	<i>maa</i>
<i>Amyda</i> – 1 (A)	1	—															
<i>Amyda</i> – 2	11	8.19	0.34														
<i>Amyda</i> – 3	4	5.13	2.87	0.66													
<i>Amyda</i> – 4	3	5.56	3.95	3.22	0												
<i>Amyda</i> – 5	10	5.58	4.37	3.57	1.96	0.02											
<i>Amyda</i> – 6	4	7.18	5.01	4.23	2.74	2.46	0.39										
<i>Amyda</i> – 2+3 (B)	15	7.38	—	—	—	—	—	1.42									
<i>Amyda</i> – 4+5+6 (C)	17	5.95	—	—	—	—	—	4.24	1.42								
<i>Nilssonina formosa</i>	2	12.04	15.82	14.05	12.81	14.00	12.81	15.34	13.51	0.19							
<i>Nilssonina gangetica</i>	19	12.96	14.85	13.13	11.72	12.89	12.24	14.39	12.53	9.38	0.44						
<i>Nilssonina hurum</i>	12	15.74	16.53	14.62	11.70	14.47	12.56	16.02	13.54	10.06	8.79	0.05					
<i>Nilssonina leithii</i>	2	13.89	15.20	14.51	11.66	13.38	12.19	15.02	12.79	8.77	7.31	8.42	0				
<i>Nilssonina nigricans</i>	17	15.74	15.71	14.38	11.27	14.16	11.98	15.36	13.14	9.51	8.36	4.87*	7.97	0.14			
<i>Dogania subplana</i>	1	12.96	15.67	15.10	13.87	15.38	14.07	15.52	14.81	13.49	14.54	13.29	13.58	12.85	—		
<i>Palea steindachneri</i>	1	14.81	16.57	16.02	13.78	15.04	13.97	16.42	14.56	14.45	14.63	14.39	14.84	13.75	13.97	—	
<i>Pelodiscus maackii</i>	1	12.04	14.42	14.47	15.61	14.79	15.92	14.43	15.20	15.51	16.36	15.45	15.03	15.08	13.87	13.49	—

Table 3. Uncorrected *p* distances (percentages) for the partial ND4 gene (715 bp) of *Amyda*, *Nilssonina* and allied softshell turtles. DNA coding for tRNAs was removed so that only protein-coding DNA was used for distance calculations. For further explanations, see Table 1.

	<i>n</i>	1 (A)	2	3	4	5	6	B	C	<i>for</i>	<i>gan</i>	<i>hur</i>	<i>lei</i>	<i>nig</i>	<i>sub</i>	<i>ste</i>	<i>maa</i>
<i>Amyda</i> – 1 (A)	1	—															
<i>Amyda</i> – 2	11	3.76	0.37														
<i>Amyda</i> – 3	4	4.61	1.15	1.04													
<i>Amyda</i> – 4	3	3.45	2.18	2.53	0												
<i>Amyda</i> – 5	10	5.78	6.00	5.46	4.53	0											
<i>Amyda</i> – 6	4	5.17	5.20	3.21	3.12	4.09	0.33										
<i>Amyda</i> – 2+3 (B)	15	3.99	—	—	—	—	—	0.74									
<i>Amyda</i> – 4+5+6 (C)	17	5.23	—	—	—	—	—	4.94	2.49								
<i>Nilssonina formosa</i>	2	12.07	11.98	7.30	12.40	12.40	12.13	10.73	12.34	0							
<i>Nilssonina gangetica</i>	19	6.90	10.55	6.78	12.45	11.66	12.84	9.54	12.07	9.35	0.30						
<i>Nilssonina hurum</i>	12	10.34	11.39	10.22	12.59	12.08	12.02	11.08	12.16	7.94	10.15	0.05					
<i>Nilssonina leithii</i>	2	12.07	13.24	12.52	13.68	14.53	13.43	13.05	14.12	9.09	8.37	9.08	0				
<i>Nilssonina nigricans</i>	17	12.07	12.35	10.40	13.16	12.96	12.39	11.83	12.86	8.14	10.98	3.21*	9.24	0.07			
<i>Dogania subplana</i>	1	17.24	19.51	17.86	14.34	14.82	13.85	19.07	14.51	12.59	14.00	13.34	14.13	14.25	—		
<i>Palea steindachneri</i>	1	12.07	15.14	10.54	14.86	14.99	15.00	13.91	14.97	13.01	13.07	13.80	12.87	14.29	14.69	—	
<i>Pelodiscus maackii</i>	1	12.07	13.04	8.25	14.85	12.87	13.97	11.76	13.48	14.71	14.81	14.84	14.56	15.30	14.71	14.26	—

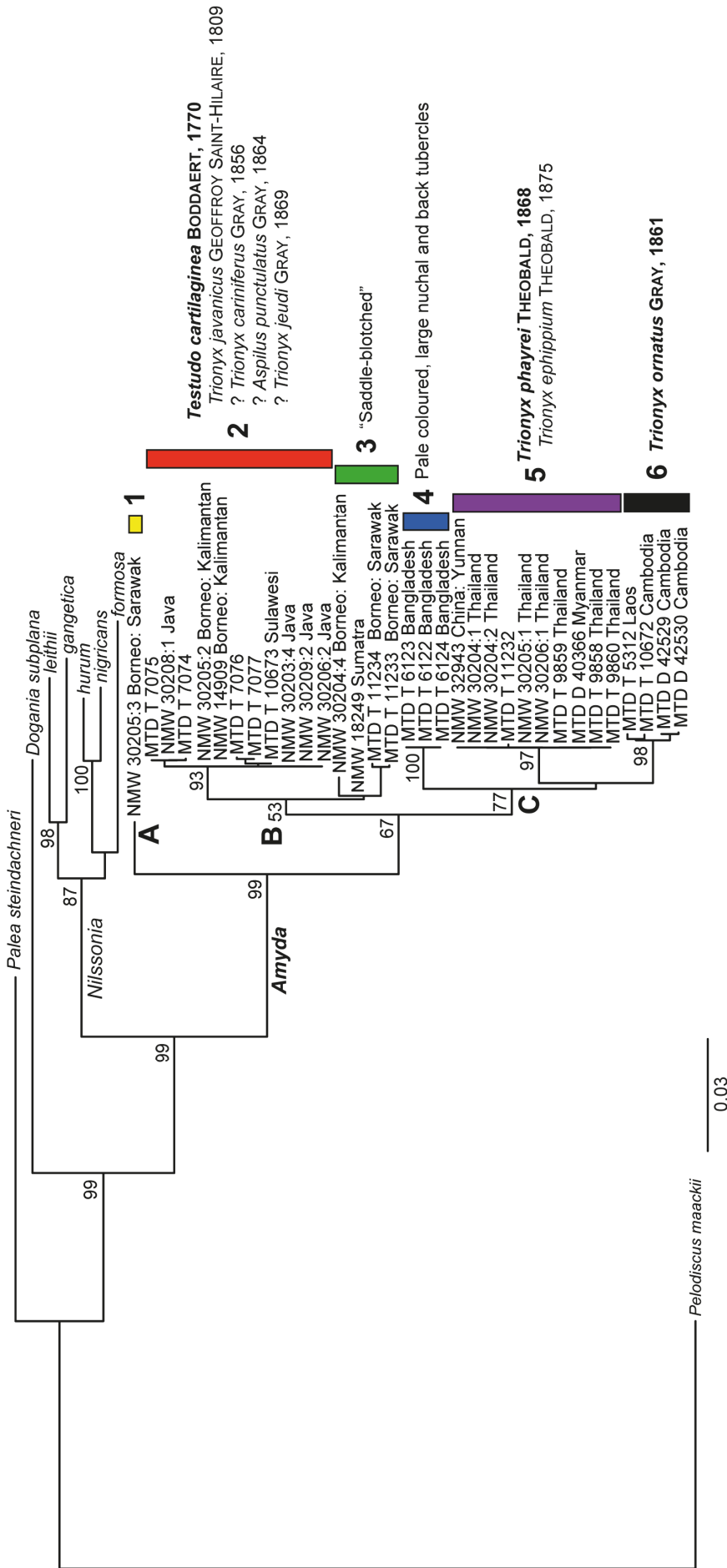


Fig. 1. Maximum Likelihood tree for *Amyda* and allied softshell turtles based on up to 2456 bp mtDNA (12S, cyt b and ND4 plus adjacent DNA coding for tRNAs). Values at nodes are thorough bootstrap values greater than 50 (not shown for some terminal clades with short branch lengths). Clade numbers and letters refer to the text; on the right are available names or morphological characters indicated. Oldest available names in bold. The topology of the Bayesian 50% consensus tree was completely identical. In the Bayesian tree, all nodes for which bootstrap values are shown received 100% support, except for the node with 53% bootstrap support. It received a posterior probability of 0.85. When up to 2716 bp nDNA were added for calculations, the topologies remained for *Amyda* unchanged, except for clade 3 which was no longer found monophyletic. Then, the respective sequences were placed in a basal polytomy together with the well-supported clade 2. This, as well as the weak support for the monophyly of clade 3 using mtDNA alone, results from the short sequences of the historical museum specimens NMW 18249 and NMW 30204:4.

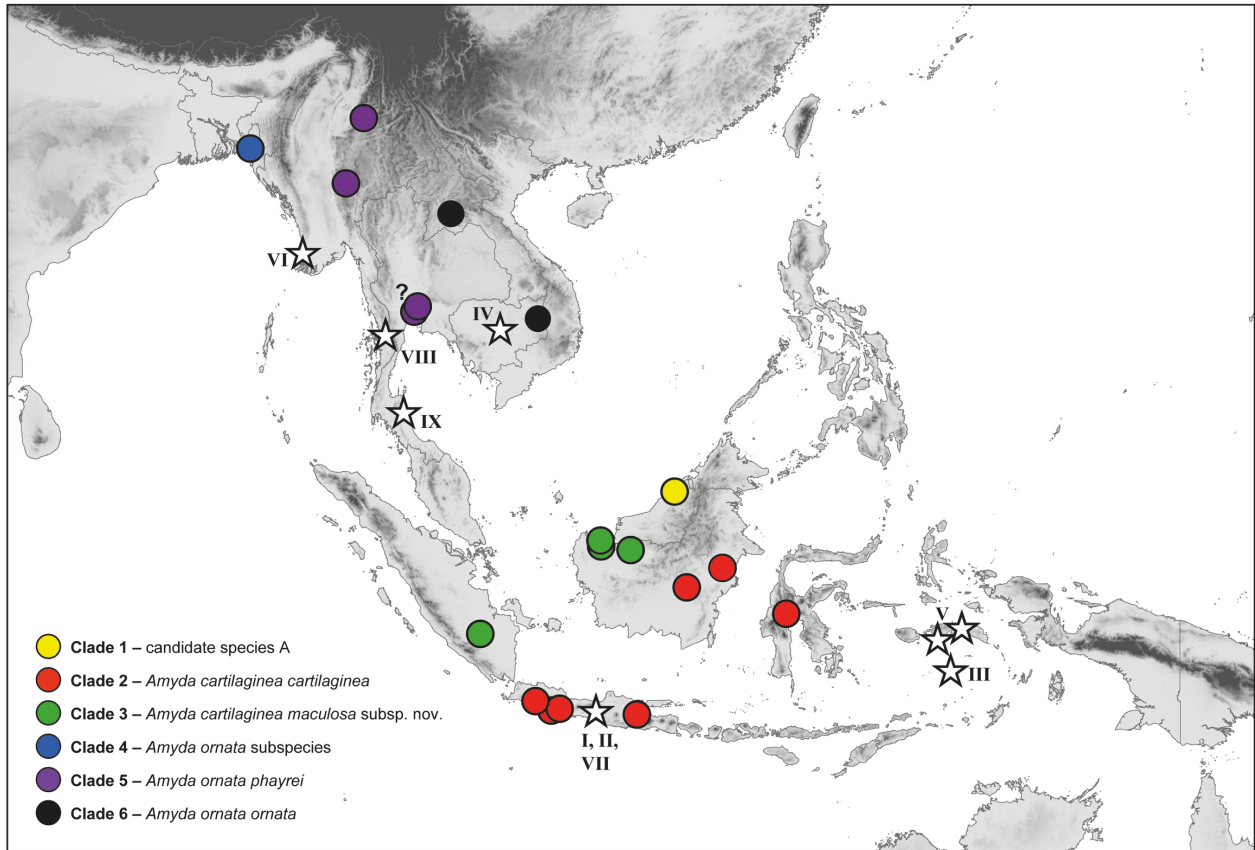


Fig. 2. Geographical distribution of the six terminal clades of *Amyda* and type localities of taxa currently identified with *Amyda cartilaginea* (BODDAERT, 1770). Recommended nomenclature indicated. Site colours correspond to Fig. 1. Question mark denotes doubtful localities in the Bangkok region (possibly translocated turtles). Type localities (FRITZ & HAVAŠ 2007): (I) Java: *Testudo cartilaginea* BODDAERT, 1770; (II) Java and neighbouring islands: *Trionyx javanicus* GEOFFROY SAINT-HILAIRE, 1809; (III) Moluccas: *Trionyx cariniferus* GRAY, 1856; (IV) Cambodia: *Trionyx ornatus* GRAY, 1861; (V) Amboina or Ceram: *Aspilus punctulatus* GRAY, 1864; (VI) Arakan Hills, Bassein District, western Pegu, Burma: *Trionyx phayrei* THEOBALD, 1868; (VII) Java (?): *Trionyx jeudi* GRAY, 1869; (VIII) Tenasserim: *Trionyx ehippium* THEOBALD, 1875; (IX) Nakorn Sri Thammaraj Province, Thailand: *Trionyx nakornsrihammarajensis* NUTAPHAND, 1979.

clades, two of which show further substructure. In total, we identified six terminal clades (Fig. 1). One of these six clades (clade 1) is only known from the Baram river, Borneo (Sarawak, Malaysia), another one (clade 2) has a wide distribution and was recorded in eastern Borneo (Kalimantan, Indonesia) and Java. Also a softshell from Sulawesi, where *A. cartilaginea* is thought to be introduced (KOCH et al. 2008; VAN DIJK et al. 2012), belongs to clade 2. The third clade (clade 3) was recorded from Sumatra and western Borneo (Sarawak, Malaysia; Kalimantan, Indonesia), and the remaining three clades 4–6 were found in Mainland Southeast Asia. Clade 4 was identified from samples from the Chittagong region of Bangladesh and represents the first record of *Amyda* for this country. Previously, *Amyda* was only known from the Indian state of Mizoram (VAN DIJK et al. 2012), which borders Bangladesh. Clade 5 seems to have a wide distribution in Myanmar and Thailand, and was also found in a sample from southwestern Yunnan (China). Clade 6 is represented by samples from Laos and Cambodia (Fig. 2).

The distribution pattern of the different *Amyda* clades on the Great Sunda Islands matches the distribution rang-

es of other freshwater organisms, for instance halfbeak fishes (Zenarchopteridae: *Dermogenys*, *Hemirhamphodon*, *Nomorhamphus*; DE BRUYN et al. 2013). Their ranges largely correspond to Quaternary palaeodrainage patterns in the region (VORIS 2000; DE BRUYN et al. 2013). During the Quaternary, the Great Sunda Islands and southern Mainland Southeast Asia formed a major landmass, with shared drainage systems of what are now different islands and the mainland (Fig. S1). This explains the occurrence of clade 2 in Java and eastern Borneo (East Sunda palaeodrainage system; VORIS 2000) and of clade 3 in western Borneo and Sumatra (North Sunda palaeodrainage system; VORIS 2000). Endemic halfbeak species, paralleling the occurrence of clade 1 in the Baram river, are also known (DE BRUYN et al. 2013).

Like on the Great Sunda Islands, the distribution of the three *Amyda* clades from Mainland Southeast Asia (Fig. 2) could be associated with different drainage systems (clade 4: Karnaphuli river and clade 6: Mekong drainage). Our records of clade 5, though, seem to contradict this hypothesis because they correspond to two distinct major drainages, the Salween (Thanlwin) and Chao Phraya systems. However, our sampled voucher

specimens from the lower course of the Chao Phraya originate from Bangkok and vicinity (Table S1), which is why their locality data should be treated with care. It cannot be excluded that these turtles were collected in the Salween system and transported for sale to the Bangkok region.

While our data provide firm evidence that *A. cartilaginea* as currently understood consists of distinct genetic lineages, their taxonomic assessment remains a challenge. Many recent studies have used uncorrected *p* distances of mtDNA sequences as a tool for species delimitation in turtles and tortoises (e.g. ENGSTROM *et al.* 2002; FRITZ *et al.* 2008, 2012a, b; KINDLER *et al.* 2012; MARTIN *et al.* 2013; PETZOLD *et al.* 2014; TODD *et al.* 2014), in analogy to the well-known barcoding approach (HEBERT *et al.* 2003). However, SHEN *et al.* (2013) have pointed out that no universal threshold can serve to identify species-level variation in different taxonomic groups of chelonians. Therefore, thresholds need to be adapted using the most closely related species as a yardstick (FRITZ *et al.* 2012a, b; KINDLER *et al.* 2012; PETZOLD *et al.* 2014). For assessing the species status of allopatric or parapatric taxa, divergences of closely related sympatric species are particularly valuable (FRITZ *et al.* 2012b; KINDLER *et al.* 2012).

If this approach is applied to *Amyda*, its sister genus *Nilssonina*, with five distinct and in part sympatric species (PRASCHAG *et al.* 2007), offers an ideal model (Tables 1–3). It is obvious that the divergences between the three more inclusive clades of *Amyda* resemble or exceed for all three mtDNA fragments the uncorrected *p* distances between *Nilssonina hurum* and *N. nigricans*, two sympatric sister species. By contrast, the divergences between some of the six terminal clades of *Amyda* are below the critical values between *N. hurum* and *N. nigricans*. On the other hand, the divergences for the *cyt b* gene of the terminal clades of *Amyda* (minimum of 1.96%; Table 2) clearly exceed the divergences between populations of *N. gangetica* in different drainage systems (0.66%–0.75%; LIEBING *et al.* 2012).

Thus, the genetic structure of *Amyda* reflects two differentiation levels, which we interpret as corresponding to three species, two of which are polytypic. Accordingly, we identify the three deeply divergent clades A, B and C with distinct species, and the substructure within clades B and C with subspecific variation.

Besides a better understanding of the taxonomy and diversity of *Amyda*, our genetic data provide a powerful tool for tracing back the regions of origin of traded or confiscated softshells and softshell products.

Taxonomy and nomenclature

There are several nominal species which are traditionally treated as synonyms of *Amyda cartilaginea* (BODDAERT, 1770) (BOULENGER 1889; SMITH 1931; WERMUTH & MERTENS 1961, 1977; FRITZ & HAVAŠ 2007; VAN DIJK *et al.* 2012). When nomina nuda and replacement names are disregarded, nine names need to be discussed. According to their type localities (Fig. 2), some of these nominal species are easy to identify with a genetic lineage, while the assignment of other names remains speculative.

No name is available for the taxon from the Baram river, Sarawak (Malaysia). This species corresponds to clade A (identical with terminal clade 1; Fig. 1). However, we abstain from naming this species. There is too little material available for a morphological characterization of this taxon, and instead we treat it as an unconfirmed candidate species (*sensu* PADIAL *et al.* 2010). Besides the museum specimen which yielded the DNA sequences used in this study (NMW 30205:3, coll. CHARLES HOSE 1901), there is just another specimen with the same data we refer to this species (NMW 30205:4). Both turtles are slightly discoloured small juveniles having very small carapacial nuchal tubercles and well-developed longitudinal carapacial ridges. On the carapace, a slightly darker saddle-shaped blotch is weakly discernible, resembling the pattern of the subspecies of *A. cartilaginea* occurring in Sumatra and Borneo (see below). The soft parts are mainly uniformly dark coloured and only few large light spots are present on the cheeks and on the chin. It is likely that a picture from a softshell from the Loagan Bunut National Park, Sarawak, provided by Indraneil Das, shows the same species (Fig. 3:A). This turtle possesses, in addition to the saddle-shaped pattern, a dark median carapacial stripe and some additional dark blotches. Morphologically, it resembles individuals of clade 3 (see below).

The situation for clade B, with terminal clades 2 and 3 corresponding to two subspecies, is different (Figs 1 and 2). There is no doubt that *Testudo cartilaginea* BODDAERT, 1770 and *Trionyx javanicus* GEOFFROY SAINT-HILAIRE, 1809, each with type locality of Java, represent our terminal clade 2. We also refer *Trionyx jeudi* GRAY, 1869, which is most likely based on material from Java, to this clade. In addition, it is possible that the two nominal species *Trionyx cariniferus* GRAY, 1856 and *Aspilus punctulatus* GRAY, 1864, described from Amboina or Ceram and the Moluccas (from where *Amyda* is unknown), represent clade 2. The oldest name for the subspecies correspond-

→ **Fig. 3.** Live Asian softshell turtles from the Great Sunda Islands. Note in (A), (D) and (E) the saddle-shaped dark mark on the carapace. (A) *Amyda* species (candidate species A?), juvenile, Loagan Bunut National Park, Sarawak, Malaysia (Borneo). Photo: INDRANEIL DAS. (B) *Amyda cartilaginea cartilaginea* (terminal clade 2), West Java, Indonesia (trade specimen). Yellow-spotted form of VAN DIJK (1992). Photo: MARK AULIYA. (C) *Amyda* species (not studied genetically). Rantauprapat, Sumatera Utara, Indonesia (northern Sumatra). Yellow-spotted form of VAN DIJK (1992). Photo: MAREN GAULKE. (D) *Amyda cartilaginea maculosa* subsp. nov. (terminal clade 3), Balai Ringin, near Serian, Sarawak, Malaysia (Borneo). Photo: INDRANEIL DAS. (E) *Amyda cartilaginea maculosa* subsp. nov. (terminal clade 3), juvenile, Tanjung Lasa, Kapuas Hulu, West Kalimantan, Indonesia (Borneo). Note the different facial pattern compared to (A). Photo: MARK AULIYA.



ing to clade 2 is *Testudo cartilaginea* BODDAERT, 1770. Consequently, the subspecies has to be named *Amyda cartilaginea cartilaginea* (BODDAERT, 1770).

Morphologically, *A. c. cartilaginea* matches the typical ‘yellow-spotted form’ of *Amyda* (Fig. 3:B), characterized by VAN DIJK (1992) as having ‘an abundance of yellow spots over the whole body, yellow-rimmed black ocelli on the carapace, black reticulation on a yellow-olive-brown ground colour at the crown of the head’, and often strongly developed nuchal tubercles. Similarly coloured turtles also occur in northern Sumatra (Fig. 3:C) in the Malacca Straits palaeodrainage (VORIS 2000; Fig. S1), from where we could not study any samples genetically. It can only be speculated whether these turtles represent a genetically distinct taxon or *A. c. cartilaginea*. In freshwater fishes, this palaeodrainage system harbours endemic taxa (DE BRUYN *et al.* 2013), so that genetic differentiation in *Amyda* should be expected as well.

No name is available for terminal clade 3, which we describe below as a new subspecies of *A. cartilaginea* (Figs 3:D and 3:E). Turtles of clade 3 correspond to the saddle-blotched colouration type of *Amyda*. This morphotype bears a conspicuous saddle-shaped mark on the carapace. SMITH (1931), VAN DIJK (1992) and AULIYA (2000) pointed out that this form is common in Sumatra and Borneo, and VAN DIJK (1992) believed that it could represent a distinct species. However, also in Myanmar, where another clade occurs, a few similarly patterned turtles have been recorded (THEOBALD 1868; SMITH 1931), and all turtles we identify with clade A show a very similar dark carapacial mark.

With respect to clade C, comprised of terminal clades 4, 5 and 6 (Figs 1 and 2), the identification of *Trionyx ornatus* GRAY, 1861 (type locality: Cambodia) with clade 6 is unambiguous. The type locality of *Trionyx phayrei* THEOBALD, 1868 near Pathein (Bassein), Myanmar, belongs to the delta region of the Irrawaddy (Ayeyarwady), which most probably harbours the same taxon as the neighbouring Salween (Thanlwin) river. Some of our samples of clade 5 originate in the Salween basin, and their morphology matches the turtles studied by KUCHLING *et al.* (2004) in the upper Chindwin, the largest tributary of the Irrawaddy. Consequently, we refer the name *T. phayrei* to clade 5. Furthermore, we tentatively identify *Trionyx ephippium* THEOBALD, 1875 (type locality: Tenasserim) with our clade 5. Thus, as we treat clades 5 and 6 together with clade 4 (for which no name is available) as conspecific, clade 6 has to be named *Amyda ornata ornata* (GRAY, 1861), and clade 5, *Amyda ornata phayrei* (THEOBALD, 1868).

Our assessment of these two subspecies (Figs 4A–C) is completely in line with the conclusions by VAN DIJK (1992) who had, however, no material from Bangladesh or India available. *Amyda ornata* corresponds to his ‘arrow-headed form’ from western Thailand and Cambodia. According to VAN DIJK (1992), this ‘arrow-headed form’ differs from what is now *A. c. cartilaginea* by a lighter base colour and a more diffuse yellow spotting, which is ‘usually restricted to the cheeks, there are no ocelli but

black dots may be present on the carapace, the nuchal tubercles are always weakly developed and the animals always show three (or rarely two) converging black lines on the crown of the head’. However, we wish to point out that some specimens of *A. o. ornata*, including genetically verified ones, closely resemble yellow-spotted *A. c. cartilaginea*, which could be the explanation why VAN DIJK (1992) identified specimens from central Thailand with his ‘yellow-spotted form’.

Our three samples from Bangladesh represent the distinct terminal clade 4, and we identify them with an undescribed subspecies of *A. ornata*. The samples were taken from three live adults which are morphologically characterized by a rather uniform pale colouration and very large tubercles in the nuchal and back region of the carapace (Figs 4:D and 4:E). The lack of museum material for turtles of clade 4 prevents us from describing this taxon.

Finally, the taxonomic allocation of *Trionyx nakornsri-thammarajensis* NUTAPHAND, 1979 remains unclear. Its type locality (Nakorn Sri Thammaraj Province, Thailand; Fig. 2) belongs to the Siam palaeodrainage system (Fig. S1), which harbours endemic freshwater fishes (DE BRUYN *et al.* 2013). Even though we have studied some samples from the vicinity of Bangkok which could originate in the Chao Phraya system, part of the Siam palaeodrainage system (VORIS 2000), we regard their locality data as unreliable (see above). Therefore, we are reluctant to identify the morphologically distinctive *T. nakornsri-thammarajensis* (NUTAPHAND 1979; VAN DIJK 1992) with our terminal clade 5 (*A. o. phayrei*).

Conclusions

The genus *Amyda* is comprised of three genetically deeply divergent species, two of which are polytypic. An undescribed species of *Amyda* seems to be confined to Sarawak, Malaysia (northern Borneo) and is only known from the Baram river.

Amyda cartilaginea cartilaginea (BODDAERT, 1770) occurs in the East Sunda palaeodrainage system, with records in eastern Borneo and Java. In the North Sunda palaeodrainage system (Sumatra, western Borneo) lives a new subspecies of *A. cartilaginea*, which is diagnosed below. A sample from Sulawesi, most probably not from a native population, belongs to the nominotypical subspecies of *A. cartilaginea*.

Samples from Mainland Southeast Asia correspond to the reinstated species *Amyda ornata* (GRAY, 1861), consisting of three genetically well-differentiated subspecies. The distribution range of the nominotypical subspecies of *A. ornata* is associated with the Mekong drainage system, with genetically verified records from Laos and Cambodia. Samples from Thailand, Myanmar and Yunnan (if



Fig. 4. Live Asian softshell turtles from Mainland Southeast Asia. (A) *Amyda ornata ornata* (terminal clade 6), southern Vietnam or Cambodia. Arrow-headed form of VAN DIJK (1992). Note the smooth rear carapace. Photo: TIMOTHY MCCORMACK. (B, C) *Amyda ornata phayrei* (terminal clade 5), Thailand. Note the different head colouration compared to *A. o. ornata* and the pronounced shell tubercles. Photos: PETER PRASCHAG. (D, E) *Amyda ornata* subspecies (terminal clade 4), Chittagong Hills, Bangladesh. Note the pale shell colouration, the indistinct head pattern and the pronounced shell tubercles. Photos: PETER PRASCHAG.

native there) are genetically distinct and identified with the subspecies *Amyda ornata phayrei* (THEOBALD, 1868). Three turtles from Bangladesh are also genetically dis-

tinct and represent an undescribed subspecies and the first country record for *Amyda*. We cannot exclude that further distinct taxa exist in unstudied drainage systems.

Amyda cartilaginea maculosa subsp. nov.

Diagnosis. *Amyda cartilaginea maculosa* differs from the nominotypical subspecies by a more massive head with a relatively short and blunt proboscis, a lighter base colouration (olive to brown instead of dark brown to blackish), the lack of contrasting yellow spotting and less pronounced nuchal tubercles. Juveniles and young adults bear on their back a characteristic saddle-shaped dark mark. In addition, *A. c. maculosa* is genetically well-differentiated from all other taxa of *Amyda*.

Holotype. Natural History Museum Vienna, NMW 30204:3, Nanga Badau, Kalimantan, Indonesia (“Nanga Bandang, Borneo”). FRANZ STEINDACHNER leg. 1874; Fig. 5.

Description of the holotype. Juvenile specimen, carapacial length approximately 60 mm, carapacial width approximately 51 mm; discus length 45 mm (all straight line). Head and neck dorsally dark with diffuse small light spots; occiput with two light triangles with tips meeting in the midline. Carapace olive brownish, with diffuse lighter mottling and a saddle-shaped dark mark in its anterior half; posterior half with dark central line. Nuchal tubercles small, several longitudinal ridges present which dissolve posteriorly in tubercles. Shell ventrally uniform beige.

Paratypes. Natural History Museum Vienna, NMW 18249, subadult, Sumatra, F. SCHUBERT-SOLDERN leg. 22 June 1942; NMW 30204:4, juvenile, same data as holotype; NMW 30210:1, juvenile, Deli, Sumatra, C. MASCHMEYER leg. July 1903.

Derivatio nominis. The subspecies name *maculosa* (‘blotched’) is a Latin adjective in feminine gender, and refers to the characteristic dark carapacial mark of younger individuals.

Distribution. *Amyda cartilaginea maculosa* seems to be endemic to the North Sunda palaeodrainage system (*cf.* VORIS 2000) in eastern Sumatra and western Borneo; but see below.

Remarks. *Amyda cartilaginea maculosa* corresponds to our terminal clade 3 (Fig. 1). The dark carapacial mark gradually fades with age and size and, as shown by the genetically studied paratype NMW 18249, subadult individuals may have a more or less uniform pale olive colouration. The paratype NMW 30210:1, a morphologically typical juvenile of 126 mm carapacial length, from “Deli, Sumatra” suggests that *A. c. maculosa* could also occur beyond the North Sunda palaeodrainage. However, for historical museum specimens often the dispatch location, and not the collection site, has been recorded, so that the locality data of NMW 30210:1 should be treated with care. Nevertheless, it should be noted that at least some *Amyda* from the Malacca Straits palaeodrainage of Su-



Fig. 5. Dorsal aspect of the holotype of *Amyda cartilaginea maculosa* subsp. nov. (Natural History Museum Vienna, NMW 30204:3, Nanga Badau, Kalimantan, Indonesia). PHOTO: PETER PRASCHAG.

matra are morphologically highly distinct and resemble *A. c. cartilaginea* (Fig. 3C). Unfortunately no samples of this population were available for genetic investigation. However, if *A. c. maculosa* should occur sympatrically with the spotted *Amyda* from the Malacca Straits system, this would argue for species status of both taxa.

Supporting Information

The Supporting Information is available electronically at www.vertebrate-zoology.de (Back Volumes).

Fig. S1. Quaternary palaeodrainage systems and shorelines in Southeast Asia according to VORIS (2000).

Table S1. Used samples, GenBank sequences and their accession numbers.

Table S2. Primer sequences and lengths of PCR products for historical samples.

Table S3. PCR conditions for historical and fresh samples.

Acknowledgements

MARK AULIYA, INDRANEIL DAS, MAREN GAULKE and TIM MCCORMACK (Asian Turtle Project) provided photos of some Asian softshell turtles. MARKUS AUER, BRIAN HORNE, RUPALI GOSH and SURESHCHANDRA DAS donated samples. Thanks for inspiring discussions go to BALÁZS FARKAS and BRIAN HORNE.

References

- AULIYA, M. (2000): A colour pattern of the softshell turtle *Amyda cartilaginea* observed in West Kalimantan (Indonesian Borneo). – *Hamadryad*, **25**: 210–214.

- BODDAERT, P. (1770): Brief van de kraakbeenige schildpad. Epistola de testudine cartilaginea. – Kornelis van Tongerlo, Amsterdam, 39 pp.
- BOULENGER, G.A. (1889): Catalogue of the Chelonians, Rhynchocephalians, and Crocodiles in the British Museum (Natural History). New Edition. – British Museum (Natural History), London, x + 311 pp., 6 plates.
- CHEN, T.-H., CHANG, H.-C. & LUE, K.-Y. (2009): Unregulated trade in turtle shells for Chinese Traditional Medicine in East and Southeast Asia: the case of Taiwan. – *Chelonian Conservation and Biology*, **8**: 11–18.
- DAS, I. (2008): *Pelochelys cantorii* Gray 1864 – Asian giant softshell turtle. – In: Rhodin, A.G.J., Pritchard, P.C.H., van Dijk, P.P., Saumure, R.A., Buhlmann, K.A. & Iverson, J.B. (Eds), Conservation Biology of Freshwater Turtles and Tortoises: A Compilation Project of the IUCN/SSC Tortoise and Freshwater Turtle Specialist Group. Chelonian Research Monographs, No. 5. Chelonian Research Foundation, Lunenburg, MA, pp. 011.1–011.6.
- DE BRUYN, M., RÜBER, L., NYLINDER, S., STELBRINK, B., LOVEJOY, N.R., LAVOUÉ, S., TAN, H.H., NUGROHO, E., WOWOR, D., NG, P.K.L., AZIZAH, M.N.S., VON RINTELEN, T., HALL, R. & CARVALHO, G.R. (2013): Paleo-drainage basin connectivity predicts evolutionary relationships across three southeast Asian biodiversity hotspots. – *Systematic Biology*, **62**: 398–410.
- DELFINO, M., FRITZ, U. & SÁNCHEZ-VILLAGRA, M.R. (2010): Evolutionary and developmental aspects of phalangeal formula variation in pig-nose and soft-shelled turtles (Carettochelyidae and Trionychidae). – *Organisms, Diversity & Evolution*, **10**: 69–79.
- ENGSTROM, T.N., SHAFFER, H.B. & McCORD, W.P. (2002): Phylogenetic diversity of endangered and critically endangered Southeast Asian softshell turtles (Trionychidae: *Chitra*). – *Biological Conservation*, **104**: 173–179.
- ENGSTROM, T.N., SHAFFER, H.B. & McCORD, W.P. (2004): Multiple data sets, high homoplasy, and the phylogeny of softshell turtles (Testudines: Trionychidae). – *Systematic Biology*, **53**: 693–710.
- ERNST, C.H., ALTENBURG, R.G.M. & BARBOUR, R.W. (2000): Turtles of the World. World Biodiversity Database, Version 1.2. – Biodiversity Center of ETI, Amsterdam, CD-ROM.
- FRITZ, U. & HAVAŠ, P. (2007): Checklist of chelonians of the world. – *Vertebrate Zoology*, **57**: 149–368.
- FRITZ, U., AUER, M., BERTOLERO, A., CHEYLAN, M., FATTIZZO, T., HUNSDÖRFER, A.K., MARTÍN SAMPAYO, M., PRETUS, J.L., ŠIROKÝ, P. & WINK, M. (2006): A rangewide phylogeography of Hermann's tortoise, *Testudo hermanni* (Reptilia: Testudines: Testudinidae): implications for taxonomy. – *Zoologica Scripta*, **35**: 531–543.
- FRITZ, U., GUICKING, D., AUER, M., SOMMER, R.S., WINK, M. & HUNSDÖRFER, A.K. (2008): Diversity of the Southeast Asian leaf turtle genus *Cyclemys*: how many leaves on its tree of life? – *Zoologica Scripta*, **37**: 367–390.
- FRITZ, U., GONG, S., AUER, M., KUCHLING, G., SCHNEEWEISS, N. & HUNSDÖRFER, A.K. (2010): The world's economically most important chelonians represent a diverse species complex (Testudines: Trionychidae: *Pelodiscus*). – *Organisms, Diversity & Evolution*, **10**: 227–242.
- FRITZ, U., ALCALDE, L., VARGAS-RAMÍREZ, M., GOODE, E.V., FABIUS-TUROBLIN, D.U. & PRASCHAG, P. (2012a): Northern genetic richness and southern purity, but just one species in the *Chelonoidis chilensis* complex. – *Zoologica Scripta*, **41**: 220–232.
- FRITZ, U., STUCKAS, H., VARGAS-RAMÍREZ, M., HUNSDÖRFER, A.K., MARAN, J. & PÄCKERT, M. (2012b): Molecular phylogeny of Central and South American slider turtles: implications for biogeography and systematics (Testudines: Emydidae: *Trachemys*). – *Journal of Zoological Systematics and Evolutionary Research*, **50**: 125–136.
- GEOFFROY SAINT-HILAIRE, [E.] (1809): Mémoire sur les Tortues molles. – *Nouveau Bulletin des Sciences, Société Philomathique de Paris*, **1**: 363–367.
- GRAY, J.E. (1856 [“1855”]): Catalogue of Shield Reptiles in the Collection of the British Museum. Part I. Testudinata (Tortoises). – British Museum, London, (1) + 79 + (2) pp., 42 plates.
- GRAY, J.E. (1861): Description of a soft tortoise from Cambodia. – *Proceedings of the Zoological Society of London*, **1861**: 41–42, plate 5.
- GRAY, J.E. (1864): Revision of the species of Trionychidae found in Asia and Africa, with the descriptions of some new species. – *Proceedings of the Zoological Society of London*, **1864**: 76–98.
- GRAY, J.E. (1869): Notes on the families and genera of tortoises (Testudinata), and on the characters afforded by the study of their skulls. – *Proceedings of the Zoological Society of London*, **1869**: 165–225, plate 15.
- HALL, T.A. (1999): BIOEDIT: a user-friendly biological sequence alignment editor and analysis program for Windows 95/98/NT. – *Nucleic Acids Symposium Series*, **41**: 95–98.
- HEBERT, P.D.N., CYWINSKA, A., BALL, S.L. & DEWAARD, J.R. (2003): Biological identifications through DNA barcodes. – *Proceedings of the Royal Society London, B (Biological Sciences)*, **270**: 313–321.
- IVERSON, J.B. (1992): A Revised Checklist with Distribution Maps of the Turtles of the World. – Richmond, Indiana, Privately Printed, xiii + 363 pp.
- KINDLER, C., BRANCH, W.R., HOFMEYER, M.D., MARAN, J., ŠIROKÝ, P., VENCES, M., HARVEY, J., HAUSWALDT, J.S., SCHLEICHER, A., STUCKAS, H. & FRITZ, U. (2012): Molecular phylogeny of African hinge-back tortoises (*Kinixys*): implications for phylogeography and taxonomy (Testudines: Testudinidae). – *Journal of Zoological Systematics and Evolutionary Research*, **50**: 192–201.
- KOCH, A., IVES, I., ARIDA, E. & ISKANDAR, D.T. (2008): On the occurrence of the Asiatic softshell turtle, *Amyda cartilaginea* (Boddaert, 1770), on Sulawesi, Indonesia. – *Hamadryad*, **33**: 121–127.
- KUCHLING, G. (1995): Turtles at a market in western Yunnan: possible range extensions for some southern Asiatic chelonians in China and Myanmar. – *Chelonian Conservation and Biology*, **1**: 223–226.
- KUCHLING, G., KO KO, W., LWIN, T., MIN, S.A., MYO MYO, K., KHAING (II), T.T., MAR, W.W. & KHAING (I), T.T. (2004): The softshell turtles and their exploitation at the upper Chindwin River, Myanmar: range extensions for *Amyda cartilaginea*, *Chitra vandijki*, and *Nilssonina formosa*. – *Salamandra*, **40**: 281–296.
- LE, M., DUONG, H.T., DINH, L.D., NGUYEN, T.Q., PRITCHARD, P.C.H. & McCORMACK, T. (2014): A phylogeny of softshell turtles (Testudines: Trionychidae) with reference to the taxonomic status of the critically endangered, giant softshell turtle, *Rafetus*

- swinhoei*. – Organisms, Diversity & Evolution, DOI 10.1007/s13127-014-0169-3
- LIEBING, N., PRASCHAG, P., GOSH, R., VASUDEVAN, K., RASHID, S.M.A., RAO, D.-Q., STUCKAS, H. & FRITZ, U. (2012): Molecular phylogeny of the softshell turtle genus *Nilssonina* revisited, with first records of *N. formosa* for China and wild-living *N. nigricans* for Bangladesh. – *Vertebrate Zoology*, **62**: 261–272.
- MARTIN, B.T., BERNSTEIN, N.P., BIRKHEAD, R.D., KOUKL, J.F., MUSSMANN, S.M. & PLACYK, J.S. (2013): Sequence-based molecular phylogenetics and phylogeography of the American box turtles (*Terrapene* spp.) with support from DNA barcoding. – *Molecular Phylogenetics and Evolution*, **68**: 119–134.
- MCCORD, W.P. & PRITCHARD, P.C.H. (2003): A review of the soft-shell turtles of the genus *Chitra*, with the description of new taxa from Myanmar and Indonesia (Java). – *Hamadryad*, **27**: 11–56.
- MCGAUGH, S.E., ECKERMAN, C.M. & JANZEN, F.J. (2008): Molecular phylogeography of *Apalone spinifera* (Reptilia, Trionychidae). – *Zoologica Scripta*, **37**: 289–304.
- MEYLAN, P.A. (1987): The phylogenetic relationships of soft-shelled turtles (family Trionychidae). – *Bulletin of the American Museum of Natural History*, **186**: 1–101.
- NUTAPHAND, W. (1979): *The Turtles of Thailand*. – Mitthadung Press, Bangkok, (7) + 222 pp.
- PADIAL, J.M., MIRALLES, A., DE LA RIVA, I. & VENCES, M. (2010): The integrative future of taxonomy. – *Frontiers in Zoology*, **7**: 16.
- PETZOLD, A., VARGAS-RAMÍREZ, M., KEHLMAYER, C., VAMBERGER, M., BRANCH, W.R., DU PREEZ, L., HOFMEYR, M.D., MEYER, L., SCHLEICHER, A., ŠIROKÝ, P. & FRITZ, U. (2014): A revision of African helmeted terrapins (Testudines: Pelomedusidae: *Pelomedusa*), with descriptions of six new species. – *Zootaxa*, **3795**: 523–548.
- POSADA, D. (2008): jMODELTEST: phylogenetic model averaging. – *Molecular Biology and Evolution*, **25**: 1253–1256.
- PRASCHAG, P., HUNSDÖRFER, A.K., REZA, A.H.M.A. & FRITZ, U. (2007): Genetic evidence for wild-living *Aspideretes nigricans* and a molecular phylogeny of South Asian softshell turtles (Reptilia: Trionychidae: *Aspideretes*, *Nilssonina*). – *Zoologica Scripta*, **36**: 301–310.
- PRASCHAG, P., STUCKAS, H., PÄCKERT, M., MARAN, J. & FRITZ, U. (2011): Mitochondrial DNA sequences suggest a revised taxonomy of Asian flapshell turtles (*Lissemys* Smith, 1931) and the validity of previously unrecognized taxa (Testudines: Trionychidae). – *Vertebrate Zoology*, **61**: 147–160.
- RONQUIST, F., TESLENKO, M., VAN DER MARK, P., AYRES, D.L., DARLING, A., HÖHNA, S., LARGET, B., LIU, L., SUCHARD, M.A. & HUELSENBECK, J.P. (2012): mrbayes 3.2: efficient Bayesian phylogenetic inference and model choice across a large model space. – *Systematic Biology*, **61**, 539–542.
- SHANAS, U., GIDIŞ, M., KASKA, Y., KIMALOV, Y., ROSNER, O. & BEN-SHLOMO, R. (2012): The Nile soft-shell turtle, *Trionyx triunguis*, of Israel and Turkey: two genetically indistinguishable populations? – *Zoology in the Middle East*, **57**: 61–68.
- SHEN, Y.-Y., CHEN, X. & MURPHY, R.W. (2013): Assessing DNA barcoding as a tool for species identification and data quality control. – *PLoS ONE*, **8**: e57125.
- SMITH, M.A. (1931): *Reptilia and Amphibia*, Vol. I. – Loricata. Testudines. In: STEPHENSON, J. (Ed.), *The Fauna of British India, Including Ceylon and Burma*. – Taylor and Francis, London, xxviii + 185 pp., 2 plates, 1 map.
- SPINKS, P.Q., SHAFFER, H.B., IVERSON, J.B. & MCCORD, W.P. (2004): Phylogenetic hypotheses for the turtle family Geoemydidae. – *Molecular Phylogenetics and Evolution*, **32**: 164–182.
- STAMATAKIS, A. (2006): RAxML-VI-HPC: maximum likelihood-based phylogenetic analyses with thousands of taxa and mixed models. – *Bioinformatics*, **22**: 2688–2690.
- STUCKAS, H. & FRITZ, U. (2011): Identity of *Pelodiscus sinensis* revealed by DNA sequences of an approximately 180-year-old type specimen and a taxonomic reappraisal of *Pelodiscus* species (Testudines: Trionychidae). – *Journal of Zoological Systematics and Evolutionary Research*, **49**: 335–339.
- TAMURA, K., STECHER, G., PETERSON, D., FILIPSKI, A. & KUMAR, S. (2013): MEGA6: Molecular Evolutionary Genetics Analysis version 6.0. – *Molecular Biology and Evolution*, **30**: 2725–2729.
- THEOBALD, W. (1868): Catalogue of the reptiles of British Birma, embracing the provinces of Pegu, Martabau, and Tenasserim; with descriptions of new of little-known species. – *Journal of the Linnean Society, Zoology*, **10**: 4–67.
- THEOBALD, W. (1875): Observations on some Indian and Burmese species of *Trionyx*, with a rectification of their synonymy and a description of two new species. – *Proceedings of the Asiatic Society Bengal*, 1875: 170–180, plates 2–5.
- TODD, E.V., BLAIR, D., GEORGES, A., LUKOSCHEK, V. & JERRY, D.R. (2014): A biogeographical history and timeline for the evolution of Australian snapping turtles (*Eelseya*: Chelidae) in Australia and New Guinea. – *Journal of Biogeography*, **41**: 905–918.
- VAN DIJK, P.P. (1992): Variation in the Southeast Asian Soft-shelled Turtle, *Amyda cartilaginea*. – Thesis, National University of Ireland, Department of Zoology, Galway, IV + 71 pp., 3 Appendices.
- VAN DIJK, P.P., IVERSON, J.B., SHAFFER, H.B., BOUR, R. & RHODIN, A.G.J. (2012): Turtles of the world, 2012 update: annotated checklist of taxonomy, synonymy, distribution, and conservation status. – In: RHODIN, A.G.J., PRITCHARD, P.C.H., VAN DIJK, P.P., SAUMURE, R.A., BUHLMANN, K.A., IVERSON, J.B. & MITTERMEIER, R.A. (Eds), *Conservation Biology of Freshwater Turtles and Tortoises: A Compilation Project of the IUCN/SSC Tortoise and Freshwater Turtle Specialist Group*. Chelonian Research Monographs, No. 5. Chelonian Research Foundation, Lunenburg, MA, pp. 000.243–000.328.
- VAN DIJK, P.P. & PALASUWAN, T. (2000): Conservation status, trade, and management of tortoises and freshwater turtles in Thailand. – In: VAN DIJK, P.P., STUART, B.L. & RHODIN, A.G.J. (Eds), *Asian Turtle Trade: Proceedings of a Workshop on Conservation and Trade of Freshwater Turtles and Tortoises in Asia*. Chelonian Research Monographs, No. 2. Chelonian Research Foundation, Lunenburg, MA, pp. 137–144.
- VORIS, H.K. (2000): Maps of Pleistocene sea levels in Southeast Asia: shorelines, river systems and time durations. – *Journal of Biogeography*, **27**: 1153–1167.
- WEBB, R.G. (1962): North American recent soft-shelled turtles (family Trionychidae). – *University of Kansas Publications in Natural History*, **13**: 429–611.
- WEBB, R.G. (1982): Taxonomic notes concerning the trionychid turtles *Lissemys punctata* (Lacepède). – *Amphibia-Reptilia*, **3**: 179–184.

- WEISROCK, D.W. & JANZEN, F.J. (2000): Comparative molecular phylogeography of North American softshell turtles (*Apalone*): implications for regional and wide-scale historical evolutionary forces. – *Molecular Phylogenetics and Evolution*, **14**: 152–164.
- WERMUTH, H. & MERTENS, R. (1961): Schildkröten, Krokodile, Brückenechsen. – VEB Gustav Fischer, Jena, XXVI + (1) + 422 pp.
- WERMUTH, H. & MERTENS, R. (1977): Testudines, Crocodylia, Rhynchocephalia. – *Das Tierreich*, **100**: I–XXVII + 1–174.

Supporting Information

Phylogeography of the Asian softshell turtle *Amyda cartilaginea* (BODDAERT, 1770): evidence for a species complex

UWE FRITZ, RICHARD GEMEL, CHRISTIAN KEHLMAIER,
MELITA VAMBERGER, PETER PRASCHAG

Vertebrate Zoology, **64**(2): 229–243.

ERRATUM

Page 238, right column, sentence starting with line 4 must read:
“However, we wish to point out that some specimens of *A. o. phayrei*, ...”

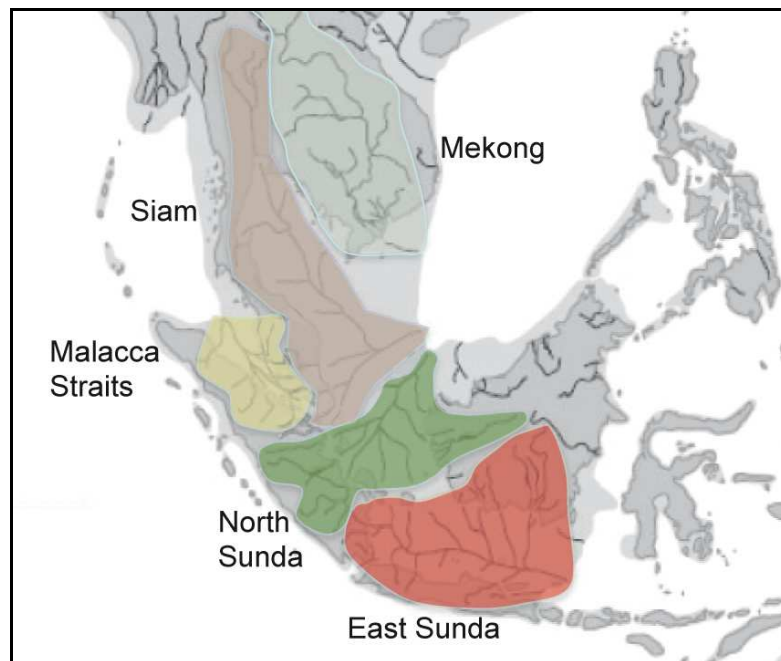


Fig. S1. Quaternary palaeodrainage systems and shorelines in Southeast Asia according to VORIS (2000). Modified from DE BRUYN et al. (2013). Shown is the lowest sea level stand (-120 m).

Table S1. Used samples, GenBank sequences and their accession numbers. For fresh samples, the sequences labelled as *cyt b* and ND4 comprised also adjacent DNA coding for tRNAs. Abbreviations: MTD D – Museum of Zoology, Senckenberg Dresden, Herpetological Collection; MTD T – Museum of Zoology, Senckenberg Dresden, Tissue Collection; NMW – Natural History Museum Vienna. Samples processed in the clean room bear asterisks. Collection year of museum specimens in brackets following locality data. For identification of *Amyda* clades with distinct taxa, see Figure 2.

Taxon	Voucher	Clade	Geographical Provenance	12S	<i>cyt b</i>	ND4	Cmos	ODC	R35
<i>Amyda cartilaginea</i> s.l.	MTD T 6122	4	Bangladesh: hills of Chittagong	LM537429	LM537462	LM537495	LM537528	LM537547	LM537565
<i>Amyda cartilaginea</i> s.l.	MTD T 6123	4	Bangladesh: hills of Chittagong	LM537430	LM537463	LM537496	LM537529	LM537548	LM537566
<i>Amyda cartilaginea</i> s.l.	MTD T 6124	4	Bangladesh: hills of Chittagong	LM537431	LM537464	LM537497	LM537530	LM537549	LM537567
<i>Amyda cartilaginea</i> s.l.	MTD D 42530	6	Cambodia	LM537432	LM537465	LM537498	LM537531	LM537550	LM537568
<i>Amyda cartilaginea</i> s.l.	MTD T 10672	6	Cambodia	LM537433	LM537466	LM537499	LM537532	LM537551	LM537569
<i>Amyda cartilaginea</i> s.l.	MTD D 42529	6	Cambodia: Ratanakiri: Lumphat	LM537434	LM537467	LM537500	LM537533	—	LM537570
<i>Amyda cartilaginea</i> s.l.	NMW 32943*	5	China: Yunnan: Ruili (1993)	LM537435	LM537468	LM537501	—	—	—
<i>Amyda cartilaginea</i> s.l.	NMW 30203:4*	2	Indonesia: East Java: Jombang (1898)	LM537436	LM537469	LM537502	—	—	—
<i>Amyda cartilaginea</i> s.l.	NMW 30206:2*	2	Indonesia: West Java: Garut, Tji Maunk (1928)	LM537437	LM537470	LM537503	—	—	—
<i>Amyda cartilaginea</i> s.l.	NMW 30209:2*	2	Indonesia: West Java: Sukabumi (c. 1900)	LM537438	LM537471	LM537504	—	—	—
<i>Amyda cartilaginea</i> s.l.	NMW 30208:1*	2	Indonesia: West Java: Tasikmalaya (1926)	LM537439	LM537472	LM537505	—	—	—
<i>Amyda cartilaginea</i> s.l.	NMW 30205:2*	2	Indonesia: Kalimantan (Borneo): Liang Buaya (1885)	LM537440	LM537473	LM537506	—	—	—
<i>Amyda cartilaginea</i> s.l.	NMW 14909*	2	Indonesia: Kalimantan (Borneo): Muara Teweh (1883)	LM537441	LM537474	LM537507	—	—	—
<i>Amyda cartilaginea</i> s.l.	NMW 30204:4*	3	Indonesia: Kalimantan (Borneo): Nanga Badau (“Nanga Bandang”; 1874)	LM537442	LM537475	LM537508	—	—	—
<i>Amyda cartilaginea</i> s.l.	MTD T 10673	2	Indonesia: Sulawesi	LM537443	LM537476	LM537509	LM537534	LM537552	LM537571
<i>Amyda cartilaginea</i> s.l.	NMW 18249*	3	Indonesia: Sumatra (1942)	LM537444	LM537477	LM537510	—	—	—
<i>Amyda cartilaginea</i> s.l.	MTD T 5312	6	Laos: Vang Vieng	LM537445	LM537478	LM537511	LM537535	LM537553	LM537572
<i>Amyda cartilaginea</i> s.l.	NMW 30205:3*	1	Malaysia: Sarawak (Borneo): Baram river (1901)	LM537446	LM537479	LM537512	—	—	—
<i>Amyda cartilaginea</i> s.l.	MTD T 11234	3	Malaysia: Sarawak (Borneo): Batang Ai dam	LM537447	LM537480	LM537513	LM537536	LM537554	LM537573
<i>Amyda cartilaginea</i> s.l.	MTD T 11233	3	Malaysia: Sarawak (Borneo): Engkari river near Ukum Longhouse	LM537448	LM537481	LM537514	LM537537	LM537555	LM537574
<i>Amyda cartilaginea</i> s.l.	MTD D 40366	5	Myanmar: Lake Inlé	LM537449	LM537482	LM537515	LM537538	LM537556	LM537575
<i>Amyda cartilaginea</i> s.l.	MTD T 9858	5	Thailand	LM537450	LM537483	LM537516	LM537539	LM537557	LM537576
<i>Amyda cartilaginea</i> s.l.	MTD T 9859	5	Thailand	LM537451	LM537484	LM537517	LM537540	LM537558	LM537577
<i>Amyda cartilaginea</i> s.l.	MTD T 9860	5	Thailand	LM537452	LM537485	LM537518	LM537541	LM537559	LM537578
<i>Amyda cartilaginea</i> s.l.	NMW 30204:1*	5	Thailand (1903)	LM537453	LM537486	LM537519	—	—	—

Table S1 continued									
Taxon	Voucher	Clade	Geographical Provenance	12S	cyt b	ND4	Cmos	ODC	R35
<i>Amyda cartilaginea</i> s.l.	NMW 30204:2*	5	Thailand (1903)	LM537454	LM537487	LM537520	—	—	—
<i>Amyda cartilaginea</i> s.l.	NMW 30205:1*	5	Thailand: Bangkok (1870)	LM537455	LM537488	LM537521	—	—	—
<i>Amyda cartilaginea</i> s.l.	NMW 30206:1*	5	Thailand: vicinity of Bangkok (1972)	LM537456	LM537489	LM537522	—	—	—
<i>Amyda cartilaginea</i> s.l.	MTD T 11232	5	Unknown	LM537457	LM537490	LM537523	LM537542	LM537560	LM537579
<i>Amyda cartilaginea</i> s.l.	MTD T 7074	2	Unknown	LM537458	LM537491	LM537524	LM537543	LM537561	LM537580
<i>Amyda cartilaginea</i> s.l.	MTD T 7075	2	Unknown	LM537459	LM537492	LM537525	LM537544	LM537562	LM537581
<i>Amyda cartilaginea</i> s.l.	MTD T 7076	2	Unknown	LM537460	LM537493	LM537526	LM537545	LM537563	LM537582
<i>Amyda cartilaginea</i> s.l.	MTD T 7077	2	Unknown	LM537461	LM537494	LM537527	LM537546	LM537564	LM537583
<i>Dogania subplana</i>	—	—	Unknown	AF366350	AF366350	AF366350	—	HE801842	—
<i>Nilssonina formosa</i>	MTD T 6068	—	China: Yunnan: Shuangbai	HE801637	HE801688	HE801740	HE801763	HE801806, HE801844	HE801869
<i>Nilssonina gangetica</i>	MTD T 6062	—	Bangladesh: Patuakhali district	HE801642	HE801693	HE801742	HE801768	HE801810, HE801846	HE801874
<i>Nilssonina hurum</i>	MTD T 3421	—	Bangladesh: Khulna	HE801657	HE801709	AM495218	HE801778	HE801819, HE801855	HE801884
<i>Nilssonina leithii</i>	MTD T 3099	—	India: Maharashtra: Purna river	HE801668	HE801721	AM495225	HE801788	HE801828, HE801864	HE801894
<i>Nilssonina nigricans</i>	MTD T 3415	—	Bangladesh: Chittagong: Nasirabad: shrine pond	HE801670	HE801723	AM495227	HE801790	HE801830	HE801896
<i>Palea steindachneri</i>	—	—	Unknown	FJ541030	FJ541030	FJ541030	HE801804	HE801843, HE801868	HE801910
<i>Pelodiscus maackii</i>	MTD T 4235, MTD T 4236	—	Russia: Primorsky Territory: Lake Khanka	FM999003	FM999019	FM999011	HE801805	—	HE801911

Table S2. Primer sequences and lengths of PCR products for historical samples. Nucleotides in brackets represent variable positions.

DNA fragment	Primer	Primer sequence (5'-3')	Length of obtained DNA fragment [bp] ¹
12S rRNA short	AmCa_12s_For1	TAC AAT AGA AAT AAC TAC GG	33
	AmCa_12s_Rev1	TTC TTA ATT TAC TAC TAA ATC C	
12S rRNA long	AmCa_12s_For1b	CAA CTA AGA TGG AAG AAA TGG G	63
	AmCa_12s_Rev1	TTC TTA ATT TAC TAC TAA ATC C	
cyt <i>b</i>	AmCa_cytb_For1	GTT TCT CCG TAG ATA ATG CC	108
	AmCa_cytb_Rev1	TCG GTG TTT GAG TTT AAT CC	
ND4	AmCa_ND4_For1	GTC ACA CCA TCA CAC ACA CG	70
	AmCa_ND4_Rev1	TAT AAG CAG TAT A(AC)T GGG CC	

¹ Length after primers were trimmed.

Table S3. PCR conditions for historical and fresh samples.

DNA fragment		ID	C	Thermocycling conditions			
				D	A	E	FE
12S rRNA short	Historical samples	94°C, 5 min	40	94°C, 30 s	54°C, 30 s	72°C, 30 s	72°C, 10 min
12S rRNA long	Historical samples	94°C, 5 min	40	94°C, 30 s	52°C, 30 s	72°C, 30 s	72°C, 10 min
cyt <i>b</i>	Historical samples	94°C, 5 min	40	94°C, 30 s	46–54°C, 30 s	72°C, 30 s	72°C, 10 min
ND4	Historical samples	94°C, 5 min	40	94°C, 30 s	45–49°C, 30 s	72°C, 30 s	72°C, 10 min
12S rRNA	Fresh samples	94°C, 5 min	30–35	94°C, 30 s	50°C, 30 s	72°C, 60 s	72°C, 10 min
cyt <i>b</i> parts 1 & 2	Fresh samples	94°C, 5 min	30–35	94°C, 30 s	50°C, 30 s	72°C, 60 s	72°C, 10 min
ND4	Fresh samples	94°C, 5 min	35	94°C, 30 s	53°C, 30 s	72°C, 60 s	72°C, 10 min
Cmos	Fresh samples	94°C, 5 min	35	94°C, 30 s	58°C, 30 s	72°C, 60 s	72°C, 10 min
ODC	Fresh samples	94°C, 5 min	30–40	94°C, 30 s	60°C, 30 s	72°C, 60 s	72°C, 10 min
ODC alternative	Fresh samples	94°C, 5 min	40	94°C, 30 s	55°C, 30 s	72°C, 60 s	72°C, 10 min
R35	Fresh samples	94°C, 5 min	35	94°C, 30 s	53°C, 30 s	72°C, 60 s	72°C, 10 min

Abbreviations: ID = initial denaturing, C = number of cycles, D = denaturing, A = annealing, E = extension, FE = final extension.