

Appendix 3

Subfamilies Archiearinae, Desmobathrinae, Sterrhinae, Geometrinae

New World geometrid moths (Lepidoptera: Geometridae):
Molecular phylogeny, biogeography, taxonomic updates
and description of 11 new tribes

Gunnar Brehm, Leidys Murillo, Pasi Sihvonen, Axel Hausmann, B. Christian Schmidt, Erki Õunap,
Daniel Bolt, Florian Bodner, Alfred Moser, Rolf Mörtter, Aare Lindt, Luis E. Parra, Niklas Wahlberg

Compiled by Gunnar Brehm, gunnar.brehm@uni-jena.de

Material and photos provided by:

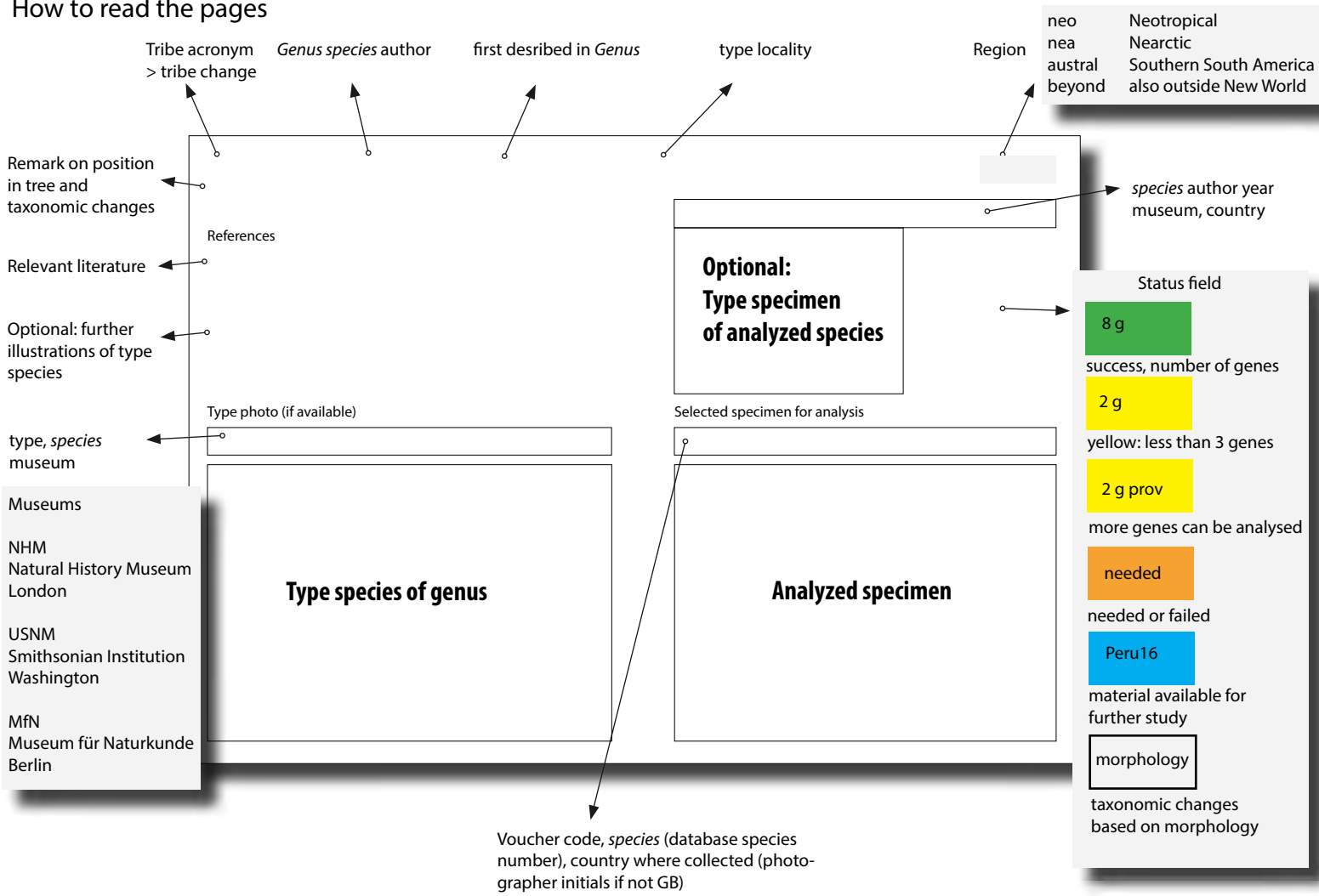
Florian Bodner (FB) Daniel Bolt (DB), Charly Covell (CC), Andreas Kopp (AK), Aare Lindt (AL), Rolf Mörtter (RM),
Alfred Moser (AM), Wolfram Mey (WM), Leidys Murillo Ramos (LMR) Stefan Naumann (SN) Linda Pitkin (Pitkin),
Erki Õunap (EO), Pasi Sihvonen (PS), Dominik Rabl (DR), Jan Vidaalepp (JV), Niklas Wahlberg (NW),
ZSM (Axel Hausmann),

All CNC codes: B. Christian Schmidt,

All USNM codes: P. Gentili-Poole,

All other photos (including specimens "from XX") taken by Gunnar Brehm.

How to read the pages



Remark on position in tree and taxonomic changes

Relevant literature

Optional: further illustrations of type species

type, species museum

- Museums
- NHM
Natural History Museum
London
 - USNM
Smithsonian Institution
Washington
 - MfN
Museum für Naturkunde
Berlin

References

Type photo (if available)

Type species of genus

Optional: Type specimen of analyzed species

Selected specimen for analysis

Analyzed specimen

Voucher code, species (database species number), country where collected (photographer initials if not GB)

- Region
- neo Neotropical
 - nea Nearctic
 - austral Southern South America
 - beyond also outside New World

species author year museum, country

Status field

- 8 g
success, number of genes
- 2 g
yellow: less than 3 genes
- 2 g prov
more genes can be analysed
- needed
needed or failed
- Peru16
material available for further study
- morphology
taxonomic changes based on morphology

Contents

arranged according to alphabetical order

- 1 Archiearinae
- 2 Desmobathrinae
- 3 Geometrinae
- 4 Sterrhinae

1 Archiearinae

AR *Archiearis parthenias* L., 1761 *Phalaena* Sweden

References

9g

Type photo (if available)
no types NHM



Selected specimen for analysis
NW107_1 *A. parthenias* Sweden (NW)



AR *Archiearis partenias* Linnaeus, 1761 *Phalaena* Sweden

nea

References

no types *infans* Möschler, 1862 NHM Canada



9g

Type photo (if available)

no types NHM

Selected specimen for analysis

CNC508477 *A. infans* Canada



AR *Leucobrephos brephoides* Walker, 1857 *Anarta* Canada 3 species

nea-pal

References

9g

Type photo (if available)

type NHM

Selected specimen for analysis

CNC508469 *L. brephoides* Canada



2 Desmobathrinae

Dolichoneura albidentata Warren *Dolichoneura* [Guyana]

neo

Seitz illustration



Type photo (if available)
type *albidentata* NHM



7g

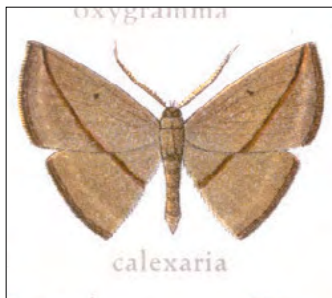
Selected specimen for analysis
AH7160 *D. oxypteraria* (AM#503) Brazil



Leptoctenopsis calexaria Walker *Gynopteryx?* [Brazil]

neo

Seitz illustration



Type photo (if available)

type *calexaria* (NHM)



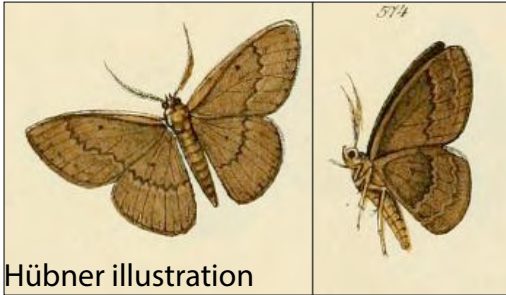
no photo *subpurpurea* Warren, 1897

8 g

Selected specimen for analysis

Pe-Geo-002 *L. subpurpurea* Peru (from RM)





Hübner illustration

Type photo (if available)

no type *injunctaria* NHM



Selected specimen for analysis

ID 19219 *O. coenobiata* (#996) Ecuador

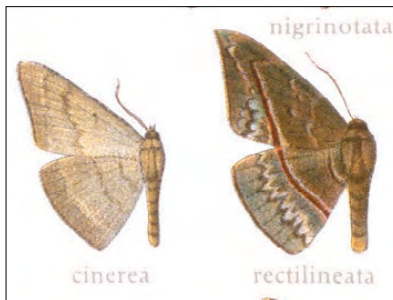


8 g

Pycnoneura rectilineata Warren *Pycnoneura* French Guiana

neo

Seitz illustration



8 g

Type photo (if available)

type *rectilineata* USNM

Selected specimen for analysis

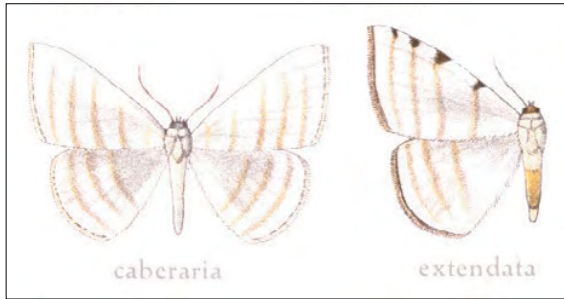
Pe-Geo-1327 *P. rectilineata* Peru



OENO > DESM *Racasta spatiaria* ssp *caberaria* Walker *Racasta* Venezuela
transferred from Oenochrominae to Desmobathrinae (Murillo Ramos et al.)

neo

Seitz illustration



8g

Type photo (if available)

type *spatiaria caberaria* NHM

Selected specimen for analysis

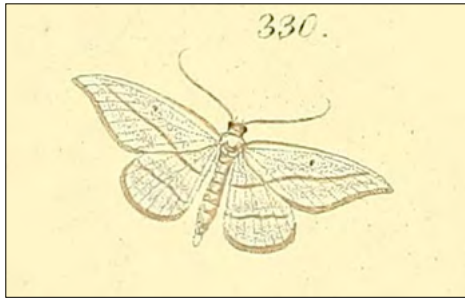
ID 19265 *R. spatiaria extendata* (#2676) Ecuador



Zanclopteryx aculeataria Herrich-Schäffer *Zanclopteryx* Brazil

neo

Herrich-Schäffer illustration



Type photo (if available)

no type *aculeataria* NHM



no photo *uniferata* Walker, [1863] NHM Brazil

3 g

Selected specimen for analysis

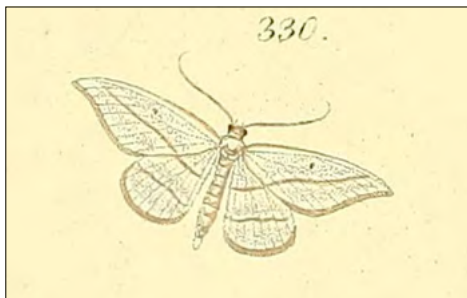
Vz-Geo-004 *Z. uniferata* Venezuela (from RM)



Zanclopteryx aculeataria Herrich-Schäffer *Zanclopteryx* Brazil

neo

Herrich-Schäffer illustration



Type photo (if available)

no type *aculeataria* NHM



Selected specimen for analysis

Pe-Geo-0492 *Zanclopteryx* sp Peru



8 g

3 Geometrinae

hemi *Anomphax gnoma* Butler *Omphax* Chile NHM
transferred from subtribe Lophochoristina to unassigned

neo

References



Type photo (if available)
type NHM



Selected specimen for analysis
bo_chi_433 *A. gnoma* Chile (DB)

7g



nemo *Assachlora assa* Druce, 1892 *Phrudocentra* Costa Rica
tribe assignment confirmed

neo

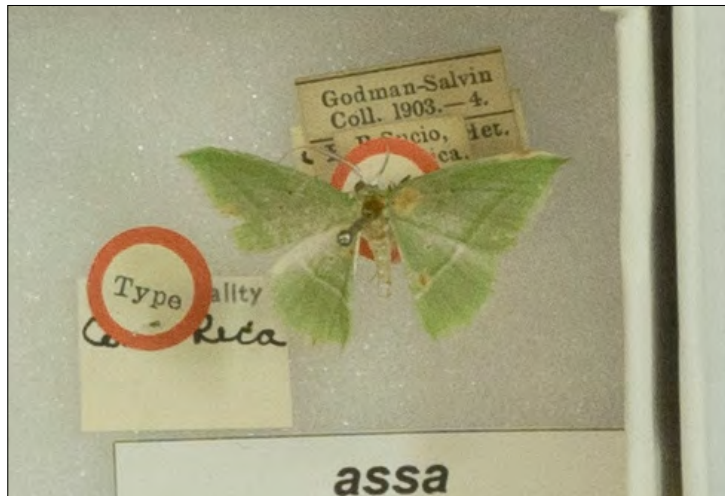
References

Viidalepp J, Lindt A (2012) SHILAP Revista de Lepi-
dopterologia 40.158 (Jun 2012): 171–190

7g

Type photo (if available)

type *assa* NHM



Selected specimen for analysis

IZBE0121639 *A. julietae* paratype Bolivia (from AL)



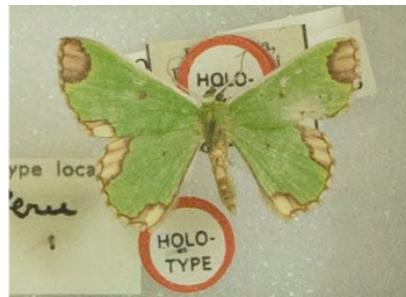
nemo *Chavariella lafayaria* Dognin *Comibaena* Ecuador (S)

tribe assignment confirmed

neo

References

holotype *fallax* Warren, 1907 NHM SE Peru



8 g

Type photo (if available)

type USNM

Selected specimen for analysis

ID 17533 *C. nr fallax* (#721) Ecuador



hemi *Chloropteryx tepperaria* Hulst *Nemoria* [U.S.A.]
tribe assignment confirmed

neo nea

References

type *opalaria* Guenée NHM Brazil

Type photo (if available)
no type NHM



6g

Selected specimen for analysis
ID 17715 *C. nr opalaria* (#2720) Ecuador



nemo *Dichorda iridaria* ssp *remotaria* Walker *Geometra* [U.S.A.]
tribe assignment confirmed

neo-nea

References

7g

Type photo (if available)
holotype NHM



Selected specimen for analysis
CNC573668 *D. iridaria* Canada



nemo *Dichorda iridaria* ssp *remotaria* Walker *Geometra* [U.S.A.]

tribe assignment confirmed

neo nea

References

Type photo (if available)

holotype NHM



type *obliquata* Warren, 1904 NHM Mexico



7g

Selected specimen for analysis

AK-CR-Geo-0003 *D. obliquata* Costa Rica (AK)



UN *Hyalochlora splendens* Druce *Racheospila* Mexico
groups in *Nemoriini* s. str.

neo

References

type *nadia* Herbulot, 1976 ZSM Ecuador (AH)

Type photo (if available)
holotype NHM



8 g

Selected specimen for analysis
ID 49457 *H. nadia* (#343) Ecuador



UN > nemo *Hydata subfenestraria* Walker *Hydata* Venezuela
transferred to Nemoriini

neo

References

6 g

Type photo (if available)
holotype NHM



Selected specimen for analysis
Pe-Geo-3043 *Hydata* sp Peru



UN > nemo *Hydata subfenestraria* Walker *Hydata* Venezuela
transferred to Nemoriini

neo

References

7g

Type photo (if available)
holotype NHM



Selected specimen for analysis
GB-Geo-030 *Hydata* sp Colombia (from ZSM)



UN > nemo *Hydata subfenestraria* Walker *Hydata* Venezuela
transferred to Nemoriini

neo

References

type *metaloba* Prout, 1934 NHM Peru



7g

Type photo (if available)
holotype NHM

Selected specimen for analysis
Pe-Geo-0004 *H. nr metaloba* Peru (from RM)



nemo *Lissochlora flavifimbria* Warren (syn of *bryata* Felder & Roggenhofer) *Aplodes* Colombia
tribe assignment confirmed

neo

References

type *latuta* Dognin, 1898 USNM Ecuador



9 g

Type photo (if available)
lectotype NHM

Selected specimen for analysis
ID 15101 *L. latuta* (#352) Ecuador



hemi *Lophochorista calliope* Druce *Racheospila* Mexico
type genus of subtribe Lophochoristina

neo nea

References

type *curtifascia* Prout, 1933 NHM SE Brazil

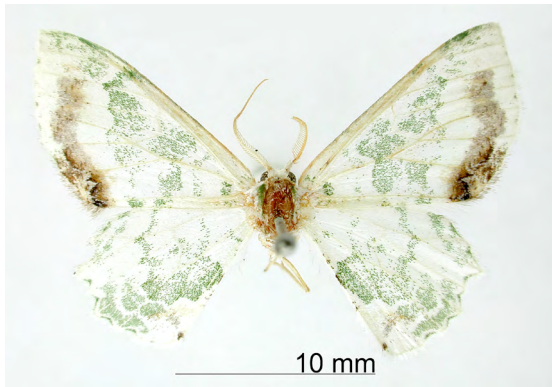


7g

Type photo (if available)
type USNM

Selected specimen for analysis

GB-Geo-083 *L. nr curtifascia* Bolivia (from JV)



nemo *Neagathia corruptata* Felder & Rogenhofer *Nemoria*? [Brazil]
tribe assignment confirmed

neo

References

7g

Type photo (if available)
lectotype NHM



Selected specimen for analysis
ID 49684 *N. corruptata* (#371) Ecuador



nemo *Nemoria bistriaria* Hübner *Nemoria* [U.S.A.]
type genus and type species of Nemoriini

References

Canfield MR et al. (2008) *Molecular Phylogenetics and Evolution* 49: 477–487

Type photo (if available)
no type NHM



neo-nea

Hübner illustration



8 g

Selected specimen for analysis
CNC580945 *N. bistriaria* Canada



nemo "*Nemoria*" *erina* Dognin, 1896 *Achlora* Ecuador
species provisionally excluded from *Nemoria*

neo

References

7g

Type photo (if available)
type *erina* USNM



Selected specimen for analysis
AH7057 "*Nemoria*" nr *erina* Brazil



nemo "*Nemoria*" *nigrisquama* Dognin, 1904 *Miantonota* Peru
species provisionally excluded from *Nemoria*

neo-nea

References

7g

Type photo (if available)

type *nigrisquama* USNM



Selected specimen for analysis

ID 17689 "*N.*" nr *nigrisquama* (#365) Ecuador



rhomb > hemi *Oospila trilunaria* Guenée *Phorodesma* Brazil

neo

References

lectotype *lacteguttata* Warren, 1909 NHM Peru

Type photo (if available)
holotype NHM



4 g

Selected specimen for analysis

ID 17778 *O. lacteguttata* (#365) Ecuador



nemo *Phrudocentra pupillata* Warren *Phrudocentra* [Guyana] British Guiana
tribe assignment confirmed

neo nea

References

Viidalepp J, Lindt A (2012) SHILAP Revista de Lepidopterologia 40.15: 171–190

Type photo (if available)
lectotype NHM



type *affinis* Warren USNM



4 g

Selected specimen for analysis
ID 17485 *P. affinis* (#2649) Ecuador



nemo *Pyrochlora rhanis* Cramer *Phal[aena] Geomet[ra]* [West Indies] Indes Occidentales
groups in Nemoriini s.l.

neo

References

Viidalepp J (2009) *Zootaxa* 1989: 55–65

Cramer illustration



7g

Type photo (if available)

no type NHM

Selected specimen for analysis

ID 17183 *P. rhanis* or near (#1438) Ecuador



nemo *Rhodochlora roseipalpis* Felder & Rogenhofer *Achlora* Venezuela
tribe assignment confirmed

neo

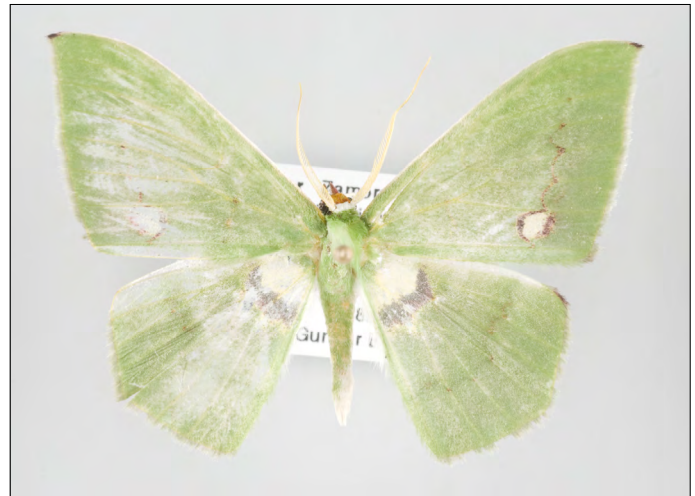
References

10 g

Type photo (if available)
lectotype NHM



Selected specimen for analysis
ID 15177 *R. roseipalpis* group (#2642) Ecuador



sync > nemo *Synchlora aerata* ssp *liquoraria* Guenée USA, California

type genus and type species of Synchlorini

Synchlorini **syn n.** of Nemoriini (Murillo Ramos et al.)

References

neo-nea

8 g

Type photo (if available)

no type *aerata* California NHM



Selected specimen for analysis

CNC541241 *S. aerata* Canada



sync > nemo *Synchlora aerata* ssp *liquoraria* Guenée USA, California
in tree sister to *S. aerata*

neo-nea

References

lectotype *jocunda* F&R (syn of *gerularia* Hübner)



6 g

Type photo (if available)

no type *aerata* California NHM

Selected specimen for analysis

AH3854 *S. gerularia* Brazil (from AM)



nemo *Tachychlora lepidaria* Möschler *Comibaena* Surinam
groups in *Nemoriini* s.l.

neo

References

type *amilletes* Prout, 1932 Costa Rica



7g

Type photo (if available)

Pitkin 1996

Selected specimen for analysis

ID 19233 *T. nr amilletes* (#342) Ecuador



nemo *Tachyphyle acuta* Butler *Tachyphyle* [Brazil]
tribe assignment confirmed

neo

References



7g

Type photo (if available)
lectotype NHM



Selected specimen for analysis
Br-Geo-070 *T. acuta* (AM#232) Brazil



hemi *Xerochlora viridipallens* Hulst *Synchlora* [U.S.A.]
tribe assignment confirmed, sister to *Chloropteryx*

neo-nea

References

5 g

Type photo (if available)
no type NHM



Selected specimen for analysis
CNC535710 *X. viridipallens* USA

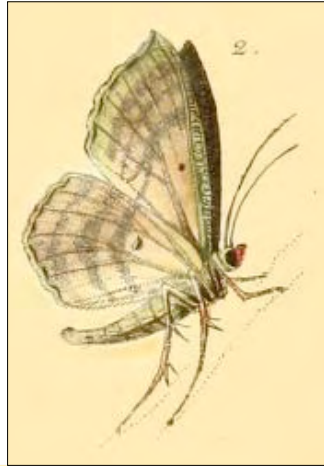


4 Sterrhinae

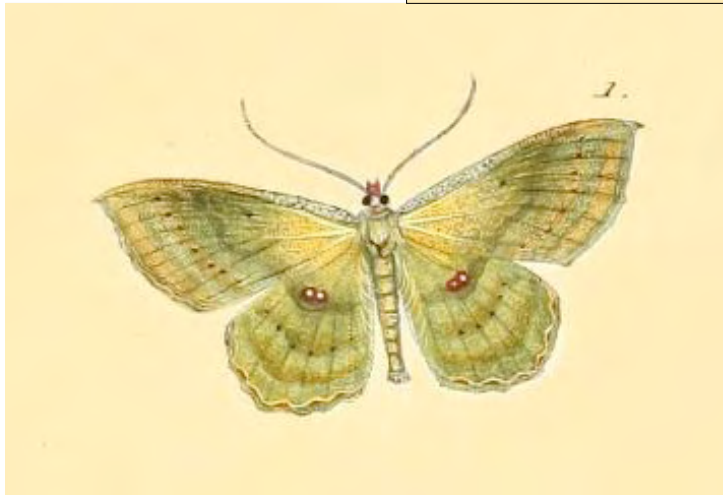
OENO > STER MECO *Ametris nitocris* Cramer *Phal[aena]* *Pyralis* Surinam
transferred to Sterrhinae, Mecoceratini (Sihvonen et al.)

neo-nea

References



Type photo (if available)
Hübner illustration



9g

Selected specimen for analysis
CNCLEP00152613 *A. nitocris* USA



ster? > ster *Aphanophleps vulpina* Warren *Aphanophleps* French Guiana
tribe assignment confirmed

neo

References

3 g

Type photo (if available)
types USNM



Selected specimen for analysis
GB-Geo-082 *A. vulpina* French Guiana (from EO)



ster *Arcobara tergemina* Walker *Arcobara* [Brazil (SE)]
tribe assignment confirmed, sister to all other analyzed Sterrhini

neo

References

8 g

Type photo (if available)

no type *tergemina* NHM



Selected specimen for analysis

AH3951 *A. tergemina* Brazil (from AM)



cyll *Atyria isis* Hübner *Atyria* Brazil

neo



Hübner illustration

Type photo (if available)

no type *isis* NHM



Selected specimen for analysis

AH7746 *A. chibcha* Brazil (ZSM)



6 g

cosy *Cyclophora albipunctata* Hufnagel *Phalaena* [Germany]

tribe assignment confirmed

European and Neotropical *Cyclophora* cluster together

References

beyond

type *rufifrons* Prout, 1938 NHM Peru



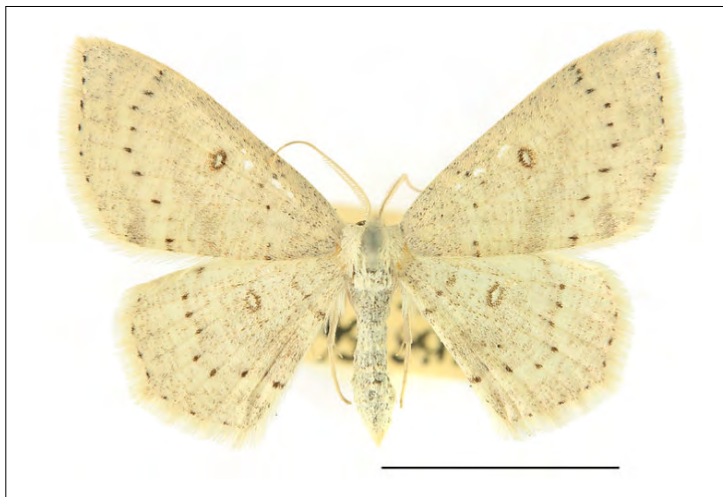
8 g

Type photo (if available)

no type *albipuncta* (PS)

Selected specimen for analysis

ID 19142 *C. rufifrons* (#2861) Ecuador



cosy *Cyclophora albipunctata* Hufnagel *Phalaena* [Germany]

tribe assignment confirmed

European and Neotropical *Cyclophora* cluster together

References

beyond

6g

Type photo (if available)

no type *albipuncta* (PS)



Selected specimen for analysis

TTBO020 *Cyclophora* sp Bolivia (TT)



rhodo > cyll *Dithecodes erasa* Warren *Dithecodes* Japan
pantropical genus

uncertain

References

Type photo (if available)
no type *erasa* (PS)



type *thetis* Warren (syn of *distracta* Walker) NHM



7g

Selected specimen for analysis

ID 19222 *D. distracta* group (2845) Ecuador



OENO > STER MECO *Ergavia bogotaria* Walker (syn of *carinenta*) *Ergavia* [Colombia]
transferred to Sterrhinae, Mecoceratini (Sihvonen et al.)

neo

References

7g

Type photo (if available)
type *bogotaria* NHM



Selected specimen for analysis
ID 17186 *Ergavia* sp (#2677) Ecuador



ster *Euacidalia sericearia* Packard *Euacidalia* [U.S.A.]
tribal assignment confirmed

neo-nea

References

4 g

Type photo (if available)
no type (PS)

Selected specimen for analysis
ID 18890 *Euacidalia* sp (#3091) Ecuador



ster *Eumacrodes gracilis* Warren (syn of *punctulata* Snellen)
tribe assignment confirmed

Eumacrodes Venezuela

neo-nea

type *excilinea* Warren, 1906 USNM French Guiana

References



9 g

Type photo (if available)

holotype *gracilis* (NHM)



Selected specimen for analysis

GB-Geo-077 *E. nr excilinea* French Guiana (from EO)



scop? > haem *Haemalea delotaria* Hübner *Haemalea* Surinam
type genus of new clade Haemaleini (Sihvonen et al.)

neo-nea

References

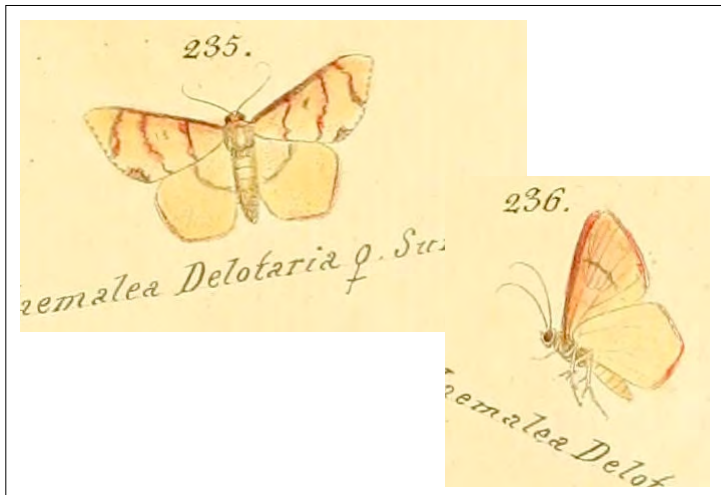
type *imitans* Dognin, 1900 USNM Ecuador



7g

Type photo (if available)

Hübner illustration



Selected specimen for analysis

ID 17504 *H. imitans* (#24) Ecuador



timandr *Haematopis saniaria* Hübner (syn of *grataria* Fabricius) *Haematopis* Surinam
type genus of new clade Haemaleini (Sihvonen et al.)

neo-nea

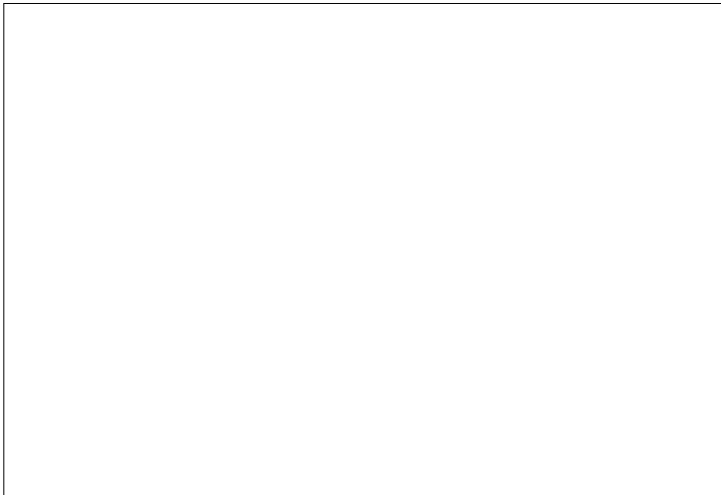
x

References

4 g

Type photo (if available)
no photo

Selected specimen for analysis
AM_94_0358 *H. grataria*



cosy? > cyll *Hemipterodes subnigrata* Warren *Hemipterodes* French Guiana
genus transferred from Cosymbini to Cylopodini

neo

References

type *divaricata* Warren, 1897 NHM Venezuela (CV)



8 g

Type photo (if available)

no type *subnigrata* (NHM)

Selected specimen for analysis

ID 18927 *H. nr divaricata* (#3100) Ecuador



ster *Idaea aversata* Linnaeus *Phalaena (Geometra)* Finland
tribe assignment confirmed

beyond

References

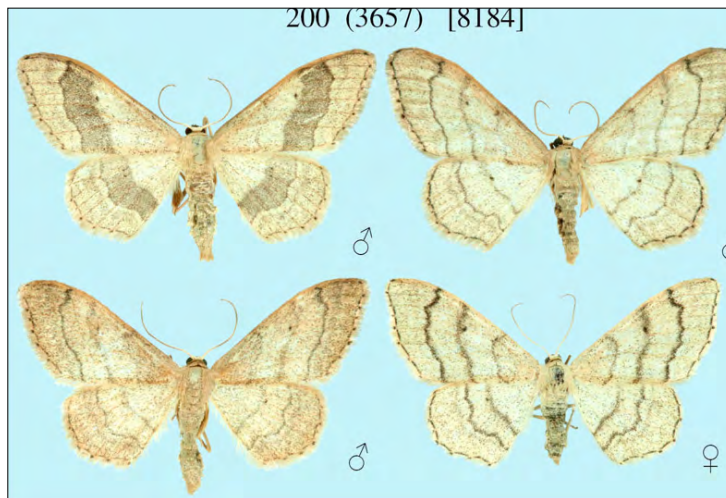
9g

Type photo (if available)

no type *I. aversata* (PS)

Selected specimen for analysis

ID 55869 *Idaea* sp Ecuador



ster *Idea aversata* Linnaeus *Phalaena (Geometra)* Finland
"Idea" nr *fervens* provisionally excluded from *Idea* (Sihvonen et al.)

neo-nea-pal-afr-ori

type *fervens* Butler, 1881 NHM Brazil

References



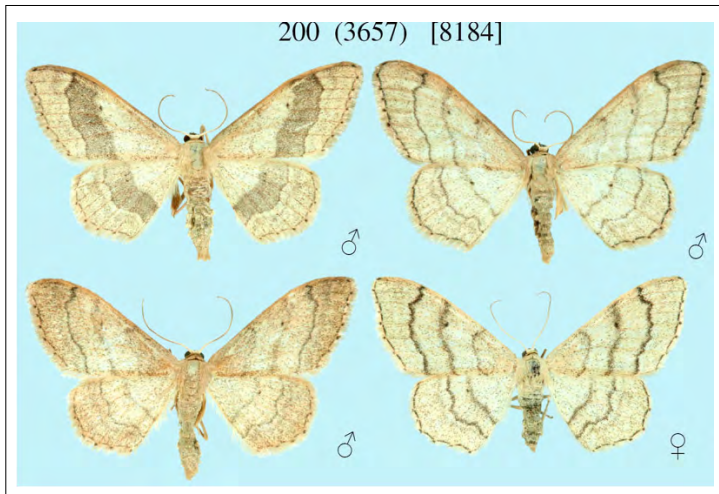
9g

Type photo (if available)

no type *I. aversata* (PS)

Selected specimen for analysis

ID 53288 "*Idea*" nr *fervens* (#3108) Ecuador



cosy > cyll *Lipotaxia rubicunda* Warren *Lipomelia* [Trinidad and Tobago]
genus transferred from Cosymbiini to Cyllopodini

neo

References

type *irregularis* Prout, 1936 NHM French Guiana

Type photo (if available)

holotype *L. rubicunda* (NHM)



Selected specimen for analysis

Pe-Geo-009 *L. irregularis* Peru (from RM)

7g



ster *Lobocleta translineata* Warren (syn of *spoliataria* Guenee) *Lobocleta* French Guiana
tribe assignment confirmed

neo-nea

type *subcincta* USNM

References



7 g

Type photo (if available)

holotype *spoliataria* (NHM)



Selected specimen for analysis

Gu-Geo-002 *L. subcincta* gr. Guatemala (from SN)



ster *Lobocleta translineata* Warren (syn of *spoliataria* Guenee) *Lobocleta* French Guiana
tribe assignment confirmed

References

8 g

Type photo (if available)

holotype *spoliataria* NHM



Selected specimen for analysis

species CR 1198 *L. subcincta* (#1198) Costa Rica



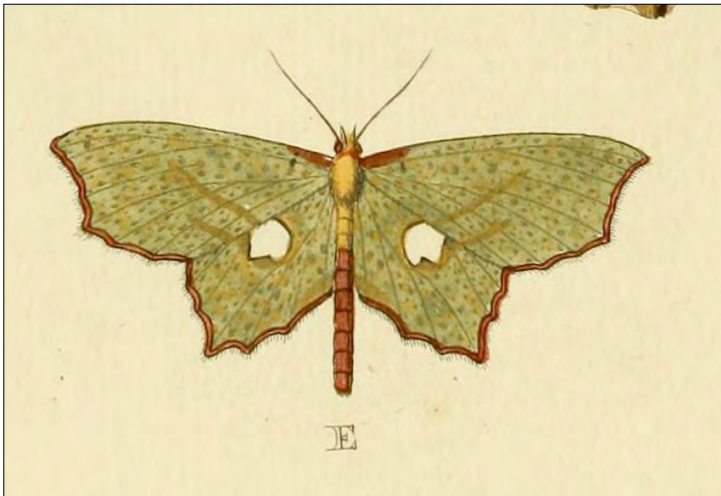
OENO > STER MECO *Macrotis netrix* Cramer *Phal[aena] Geomet[ra]* [Dutch Guiana, Guyana, N Brazil] neo
transferred to Sterrhinae (Sihvonen et al.)

References

7g

Type photo (if available)

Cramer illustration *netrix*



Selected specimen for analysis

ID 22654 *M. netrix* (#2669) Ecuador



cosy *Pleuroprucha molitaria* Möschler *Pleuroprucha* Puerto Rico
tribe assignment confirmed

neo-nea

References

5 g

Type photo (if available)
type MfN (WM)



Selected specimen for analysis
ID 19370 *Pleuroprucha* sp (#972) Ecuador



UN > cyll *Prasinochrysa detracta* Walker *Chrysauga* Venezuela
genus transferred to Cylopodini (Sihvonen et al.)

neo

References

8 g

Type photo (if available)

type spp *polydora* Prout NHM



Selected specimen for analysis

Pe-Geo-0448 *P. detracta* Peru



scop? > haem *Proutoscia mirifica* Schaus *Proutoscia* Costa Rica
genus transferred to new clade Haemaleini (Sihvonen et al.)

neo

References

7g

Type photo (if available)
type USNM

Selected specimen for analysis
GB-Geo-089 *P. mirifica* Costa Rica (from DR)



UN > haem *Pseudasellodes constellata* Warren *Pseudasellodes* Peru
genus transferred to new clade Haemaleini (Sihvonen et al.)

neo-nea

References

type *daphnites* Oberthür (syn of *fenestraria* Gn) NHM

Type photo (if available)

syntype *constellata* NHM



6 g

Selected specimen for analysis

Vz-Geo-005 *P. nr fenestraria* Venezuela (from RM)



ster *Ptychamalia perlata* Warren *Haemalea* [Trinidad & Tobago]
tribe assignment confirmed

neo-nea

References

8 g

Type photo (if available)
holotype *perlata* NHM



Selected specimen for analysis
ID 17508 *Ptychamalia* sp (#1036) Ecuador

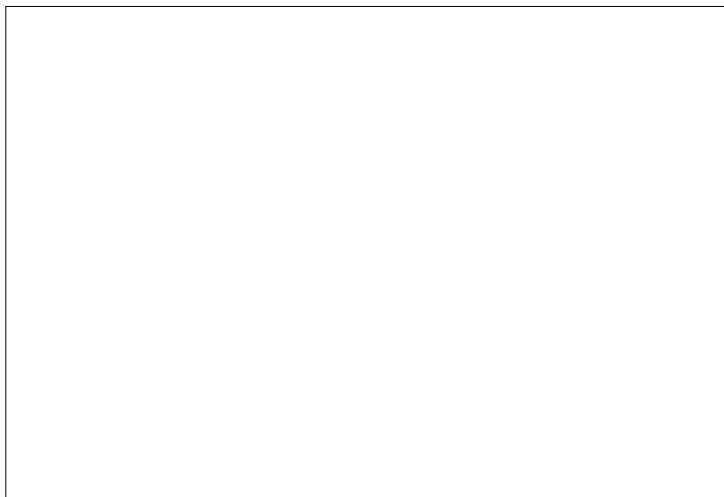


rhodo *Rhodostrophia calabra* Petagna *Phalaena* [Italy]
tribe assignment confirmed

beyond

References

Type photo (if available)
no photo



type *cauquenensis* Butler, 1882 NHM Chile



7g

Selected specimen for analysis
bo_chi_386 *R. cauquenensis* Chile (from DB)



scop *Scopula ornata* Linnaeus *Phalaena (Geometra)* [Portugal] Lusitania
tribe assignment confirmed

beyond

References

7g

Type photo (if available)
no type *ornata* NHM

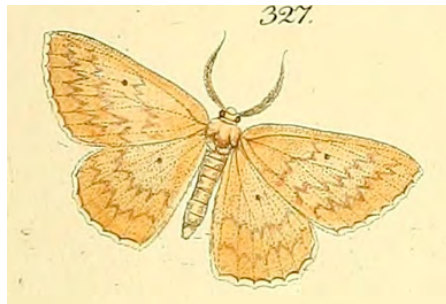


Selected specimen for analysis
MM00586 *S. immorata* Europe



UN > cyll *Semaepus serrilinearia* Herrich-Schäffer
genus transferred to Cyllopodini (Sihvonen et al.)

Herrich-Schäffer illustration



Type photo (if available)

type *hircaria* Guenée (syn of *serrilinearia*) NHM



Semaepus Brazil

neo-nea

type *ladrilla* Dognin, 1893 USNM Ecuador



7g

Selected specimen for analysis

ID 15296 *S. ladrilla* (#22) Ecuador

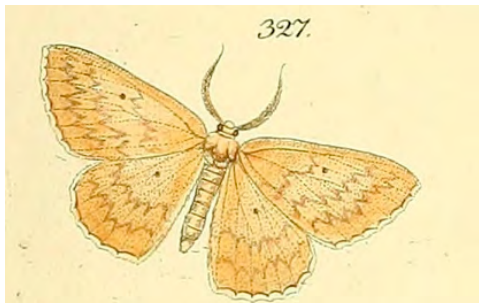


UN > cyll *Semaeopus serrilinearia* Herrich-Schäffer
genus transferred to Cylopodini (Sihvonen et al.)

Semaeopus Brazil

neo-nea

Herrich-Schäffer illustration



Type photo (if available)

type *hircaria* Guenée (syn of *serrilinearia*) NHM



type *varia* Warren, 1895 NHM Guayana



Selected specimen for analysis

Vz-Geo-010 *S. varia* Venezuela (from RM)



6 g

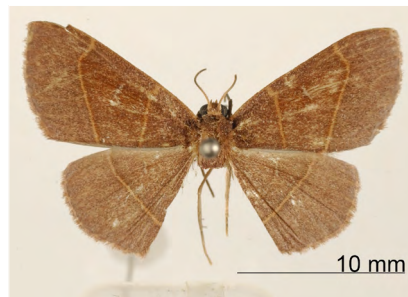
UN > cyll *Semaeopus serrilinearis* Herrich-Schäffer
genus transferred to Cyllopodini (Sihvonen et al.)

Semaeopus Brazil

neo-nea

References

type *purpurea* Warren, 1906 USNM French Guiana



6 g

Type photo (if available)

type *hircaria* Guenée (syn of *serrilinearis*) NHM

Selected specimen for analysis

LMR 129 *Semaeopus* nr *purpurea* Colombia (LMR)



cyll *Smicropus longalis* Hübner *Micropus* Brazil
tribe assignment confirmed

neo

Hübner illustration



Type photo (if available)

type *latifasciata* Warren (syn of *longalis*) NHM



type *ochra* Druce, 1899 NHM Venezuela



4 g

Selected specimen for analysis

ID 16954 *S. nr ochra* (#1064) Ecuador



rhodo *Tricentra flavimarginata* Warren *Tricentra* Ecuador (N)
tribe assignment confirmed

neo

References

Type photo (if available)

holotype *flavimarginata* NHM



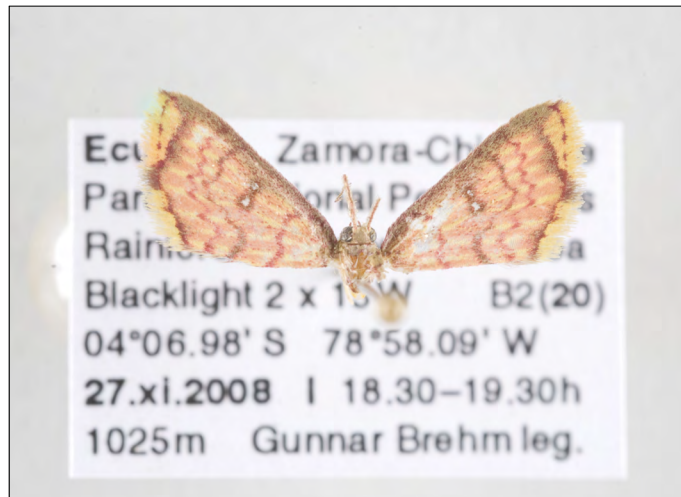
type *necula* Druce, 1892 (syn of *gavisata* Guenée)



7g

Selected specimen for analysis

ID 17542 *T. gavisata* (#714) Ecuador



cyll *Xanthyrus flaveolata* Linnaeus *Phalaena (Geometra)* [unknown location]
tribe assignment confirmed

neo

References

4 g

Type photo (if available)

no type *flaveolata* NHM



Selected specimen for analysis

Ec-NE-Geo-010 *X. flaveolata* Ecuador



rhodo *Zalissolepis subviolaria* Guenée *Amaurinia* [French Guiana]
tribe assignment confirmed

neo

References

6 g

Type photo (if available)

holotype *subviolaria* NHM



Selected specimen for analysis

ID 50242 *Z. subviolaria* (#2846) Ecuador



UN > ster "*Lophochorista*" *porioni* Herbulot *Lophochorista* Peru
species transferred to Sterrhini (Sihvonen et al.)

References

9g

Type photo (if available)
holotype *porioni* ZSM



Selected specimen for analysis
Pe-Geo-0629 "*Lophochorista*" *porioni* Peru

