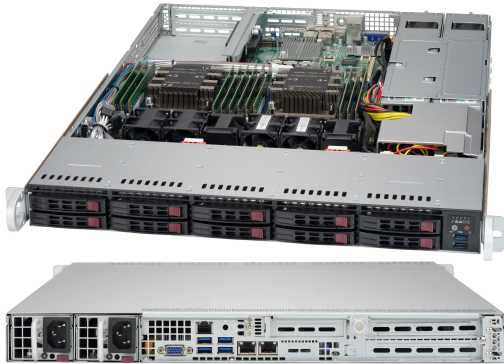


SuperChassis 116AC2-R706WB2



- ▶ [Chassis Manual](#)
- ▶ [Optimization](#)

Note: Image above may show a varied configuration of optional parts. Please refer to parts list for standard parts included.

Key Features

1. 1U chassis for motherboard support size of E-ATX 12"x13", 13.38"x 13.4". Optimized for X11 WIO (W series) motherboards
 2. 10 x 2.5" hot-swap SAS/SATA drive bay
 3. 10-port 1U SAS3 12Gbps Hybrid backplane, support up to 8x 2.5-inch SAS3/SATA3 HDD/SSD and 2x SAS3/SATA3/NVMe Storage Devices
 4. 1U Redundant 700/750W Single Output Power Supply Platinum level, 54.5mm width
 5. 2 full height expansion slot(s) , 1 low-profile expansion slot(s)
 6. 4 x 40x56mm counter-rotation PWM fan(s)
 7. Optional 2 x fans for AOC cooling
-

Specifications

Product SKUs

- **CSE-116AC2-R706WB2** ■ SuperChassis 116AC2-R706WB2

Form Factor

- 1U chassis for motherboard support size of E-ATX 12"x13", 13.38"x 13.4".
- Optimized for X11 WIO (W series) motherboards

Processor Support

- Dual, single Intel® / AMD processors

Dimensions

- **Height** ■ 1.7" (43 mm)
- **Width** ■ 17.2" (437 mm)
- **Depth** ■ 23.5" (597 mm)
- **Gross Weight** ■ 40 lbs (18.14 kg)
- **Packaging (W x H x L)** ■ 24" (610 mm) x 8" (203 mm) x 32" (813 mm)
- **Available Color** ■ Black

Expansion Slots

- 2 full height expansion slot(s)
- 1 low-profile expansion slot(s)

Drive Bays

- 10 x 2.5" hot-sw ap SAS/SATA drive bay

Backplane

- 10-port 1U SAS3 12Gbps Hybrid backplane, support up to 8x 2.5-inch SAS3/SATA3 HDD/SSD and 2x SAS3/SATA3/NVMe Storage Devices

Front Panel

- **Buttons** ■ Power On/Off button
■ Unit Identification (UID) button
- **LEDs** ■ 2 Network Activity LEDs
■ HDD activity LED
■ Power Status LED
■ Unit Identification (UID) LED

Systems Cooling

- **Fans** ■ 4 x 40x56mm counter-rotation PWM fan(s)
■ Optional 2 x fans for AOC cooling

System Monitoring

- Chassis intrusion sw itch

Operating Environment (System)

- **Operating Temperature Range** ■ 5°C - 35°C (41°F - 95°F)
- **Non-Operating Temperature Range** ■ -40°C - 70°C (-40°F - 158°F)
- **Operating Relative Humidity Range** ■ 8% - 90% (non-condensing)
- **Non-Operating Relative Humidity Range** ■ 5% - 95% (non-condensing)

Power Supply

1U Redundant 700/750W Single Output Power Supply Platinum level, 54.5mm width

- **Power Efficiency** ■ 94%
- **Total Output Power and Input** ■ 700W with Input 100 - 140Vac
■ 750W with Input 200 - 240Vac
- **AC Input Frequency** ■ 50-60Hz
- **Dimensions (L x W x H)** ■ 320 x 54.5 x 40.25 mm
- **Output Type** ■ Backplanes (gold finger)
- **+12V** ■ Max: 58A / Min: 0.5A (100Vac - 140Vac)
■ Max: 62A / Min: 0.5A (200Vac - 240Vac)
- **+5Vsb** ■ Max: 3A / Min: 0A
- **Power Distributor** ■ PDB-PT112-S2424
■ O/P: 12V/54A
■ +5V Max: 25
■ +3.3V Max: 25
■ -12V Max: 0.6

Certification



■ Platinum Certified

Regulatory (Power Supply)

- **Power Supply Safety / EMC** ■ BSMI
■ CCC
■ CE/EMC
■ FCC class A
■ UL/CB
■ UL/CUL

Components

Standard Parts List

	Part Number	Qty	Description
Air Shroud	MCP-310-19002-0N	1	SC815/113/116 Intel DP X9, X8 PC air shroud, 12x13MB
HD Backplane	BPN-SAS3-116A-N2	1	10-port 1U SAS3 12Gbps Hybrid backplane, support up to 8x 2.5-inch SAS3/SATA3 HDD/SSD and 2x SAS3/SATA3/NVMe Storage Devices
Cable(S)	CBL-0160L	2	NEMA5-15P to C13 US power cord 16AWG 6ft, PBF (default for high watt)
Cable(S)	CBL-0335L	1	CBL,FRONT CNTL,20 TO 20 PIN,RA,RND TUBE,73CM,28AWG
Fan(s)	FAN-0101L4	4	40x56,4 Pin PWM,Primary for SC809,111, Sec.for SC816,819,808
Front Panel	FPB-FP116-DU3	1	Front control board with two USB 3.0 for SC116/SC119X
Cooling Fan & Accessory	MCP-320-00027-0B	24	Plastic pin for 40x28, 40x56 fan
Cooling Fan & Accessory	MCP-320-00028-0B	1	Fan holder for 6pcs 40x56 fan, assemble-able for SC819/SC119/SC818/SC116
Cooling Fan & Accessory	MCP-340-00035-0B	2	Dummy fan 40x56mm for 40x56 counter-rotating fan (cost-effective)
Drive Tray(s)	MCP-220-00047-0B	10	Black gen 3rd hot-sw ap 2.5inch HDD tray
Power Distributor	PDB-PT112-S2424	1	WIO X11 Support,PDB-PT112-S2424 is based on PDB-PT112-2424
Part(s)	MCP-120-00029-0N	2	Blank FHL bracket without SCSI cutout for SC815,823
Part(s)	MCP-120-00030-0N	1	Blank LPL-bracket (1 row of capsule hole)
Power Supply & Accessory	MCP-250-00009-0N	1	SC113 Redundant Power Distributor Cover
Power Supply & Accessory	PWS-706P-1R	2	1U 750W redundant power width 54.5mm(Platinum),HF,RoHS/REACH,PBF
Mounting Rail(s)	MCP-290-00063-0N	1set	Rail set, quick/quick, default for 1U 17.2"W for SC113/SC116,RoHS/REACH
Rear Window	MCP-240-00098-0N	1	WIO rear window for SC113,SC116, SC815 Redundant PWS

Optional Parts List

	Part Number	Qty	Description
Rail	MCP-290-00056-0N	-	Quick-release outer rail for square hole short-depth rack (19"~26.4")

Motherboard (for CSE- 116AC2-R706WB2)

X11DDW-L

X11DDW-NT

● = Most optimized Chassis for SuperServer Configuration
 Blue color = Compatible
 Green color = Global SKU & Compatible
 Red dot & green color = Optimized + Global SKU

Servers (for CSE- 116AC2-R706WB2)

1029P-WTRT