

Wildlife on DHI

This is a snapshot of some of the animals caught in pitfall traps during wildlife surveys on DHI between 2009 and 2014. A few other (non-survey) wildlife images are also included.



Below - line of pit traps
Left - some pit trap contents



White-bellied sea eagle



Barn owl



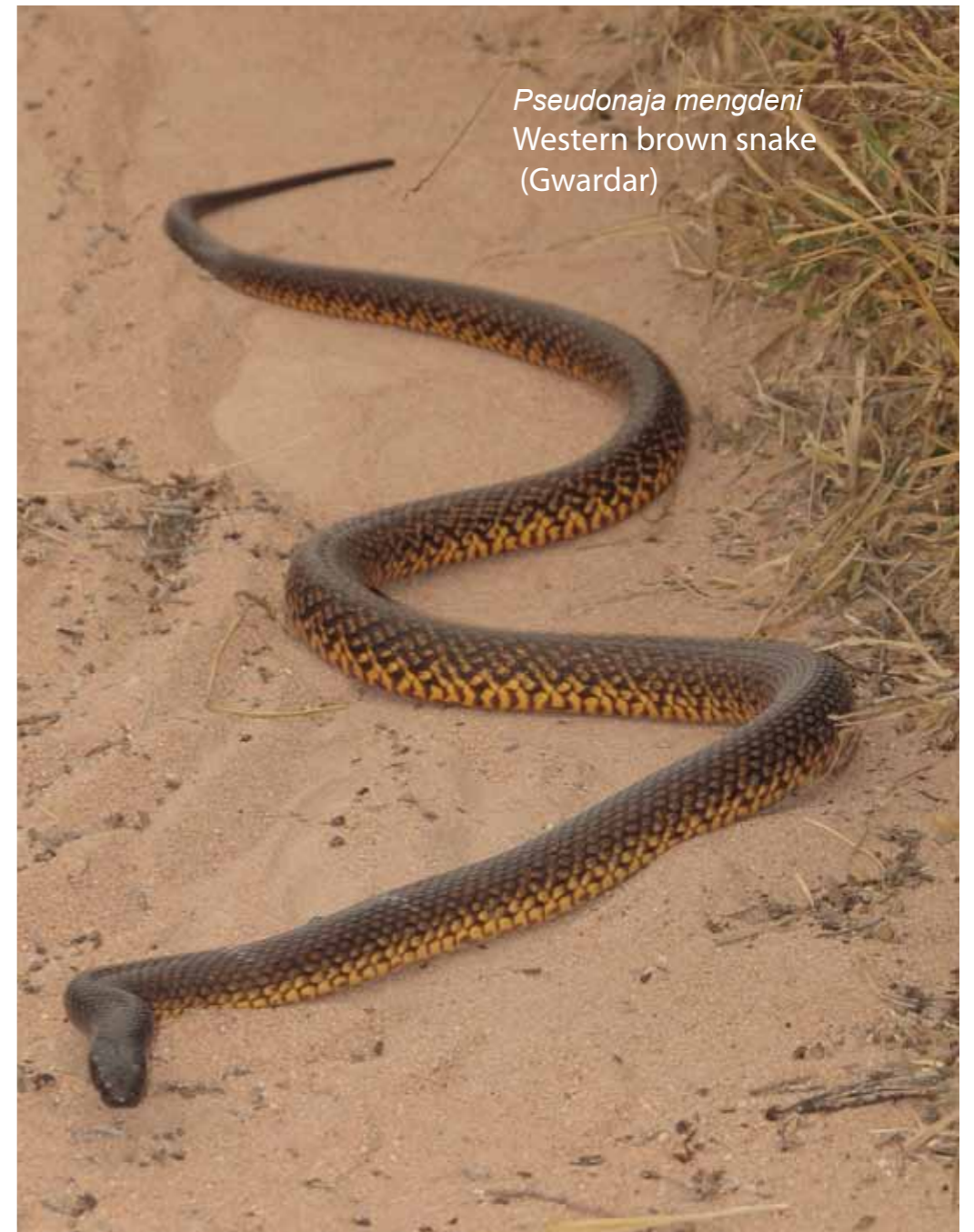
Snakes



Antaresia stimsoni
Stimson's Python



Pseudechis australis
Mulga



Pseudonaja mengdeni
Western brown snake
(Gwardar)



Demansia calodera
Black-necked whipsnake



Ramphotyphlops australis
Southern blind snake



Neelaps bimaculatus
Black-naped snake



Simoselaps littoralis
Burrowing snake

Legless lizards



Skinks



Tiliqua rugosa palarra
Bobtail



Egernia stokesii badia
Gidgee skink (Quoin)



Tiliqua rugosa
Bobtail



Egernia stokesii badia
Gidgee skink (Notch)

Skinks



Cyclodomorphus celatus
Western slender blue-tongue



Ctenotus fallens
West-coast laterite ctenotus



Ctenotus australis
Western limestone ctenotus



Lerista varia
Shark Bay broad-blazed slider



Lerista connivens
Blinking broad-blazed slider



Morethia lineocellata
West coast morethia skink



Lerista lineopunctulata
Dotted-line robust slider



Lerista planiventralis
Keeled slider



C. plagio

Dragons

Rankinia adelaidensis or *R. parviceps butleri*
Heath dragon



Ctenophorus maculatus maculatus
Spotted military dragon



Pogona minor minor
Dwarf bearded dragon



Ctenophorus caudicinctus
Ring-tailed dragon



Dragons



Ctenophorus butleri
Shark Bay heath dragon (female)



Ctenophorus butleri
Shark Bay heath dragon (male)



Ctenophorus reticulatus
Western netted dragon



Ctenophorus adelaidensis
formerly *Tympanocryptis adelaidensis*
Western heath dragon



Ctenophorus maculatus maculatus
Spotted military dragon

Geckoes



Geckoes



Rodents



Pseudomys hermannsburgensis
Sandy inland mouse



Pseudomys hermannsburgensis
Sandy inland mouse



Pseudomys albocinereus
Ash grey mouse



Dasyurid



Sminthopsis dolichura
Little long-tailed dunnart