

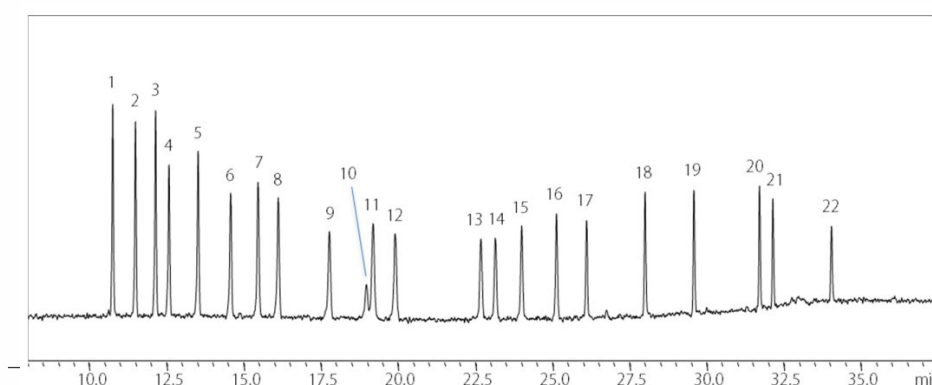
CoreFocus
Report
No.314

GC FPD(P) AOC SH Series

SH-1701

Analysis of Low-Concentration Organophosphorus pesticides

Keywords: High-pressure splitless injection, Organophosphorus pesticides



1. Ethoprophos
2. Phorate
3. Thiometon
4. Terbufos
5. Etrimfos
6. ECP (Dichlofenthion)
7. Dimethoate
8. Tolclofos-methyl
9. Chlorpyrifos
10. Formothion
11. MPP (Fenthion)
12. MEP (Fenitrothion)
13. Isufenphos
14. PAP (Phenthoate)
15. Prothiofos
16. DMTP (Mathidathion)
17. Butamifos
18. Sulprofos
19. Fensulfothion
20. EPN
21. PMP (Phosmet)
22. Pyraclofos
(5 µg/L each)

GC Model	: Nexis™ GC-2030
Detector	: FPD-2030 (P-mode)
Column	: SH-1701 (30 m x 0.25 mm I.D. df = 0.25 µm), P/N: 221-75777-30
Column Temperature	: 60 °C (1 min) - 20 °C/min - 180 °C(0 min) - 5 °C/min - 250 °C(10min) - 7°C/min - 280 °C(5 min) Total 37.4 min
Injection Mode	: High Pressure Splitless (300 kPa, 1 min)
Carrier Gas Controller	: Constant Linear Velocity (He)
Linear Velocity	: 46.8 cm/s
Injection Temperature	: 260 °C
Detector Temperature	: 300 °C
Injection Volume	: 2 µL

Source : Application News G294 ([JP](#), [ENG](#))

CoreFocus and Nexis are trademarks of Shimadzu Corporation or its affiliated companies in Japan and/or other countries.

Shimadzu Corporation
www.shimadzu.com/an/

For Research Use Only. Not for use in diagnostic procedures.

This publication may contain references to products that are not available in your country. Please contact us to check the availability of these products in your country.

The content of this publication shall not be reproduced, altered or sold for any commercial purpose without the written approval of Shimadzu.

Company names, products/service names and logos used in this publication are trademarks and trade names of Shimadzu Corporation, its subsidiaries or its affiliates, whether or not they are used with trademark symbol "TM" or "®".

Third-party trademarks and trade names may be used in this publication to refer to either the entities or their products/services, whether or not they are used with trademark symbol "TM" or "®".

Shimadzu disclaims any proprietary interest in trademarks and trade names other than its own.

The information contained herein is provided to you "as is" without warranty of any kind including without limitation warranties as to its accuracy or completeness. Shimadzu does not assume any responsibility or liability for any damage, whether direct or indirect, relating to the use of this publication. This publication is based upon the information available to Shimadzu on or before the date of publication, and subject to change without notice.