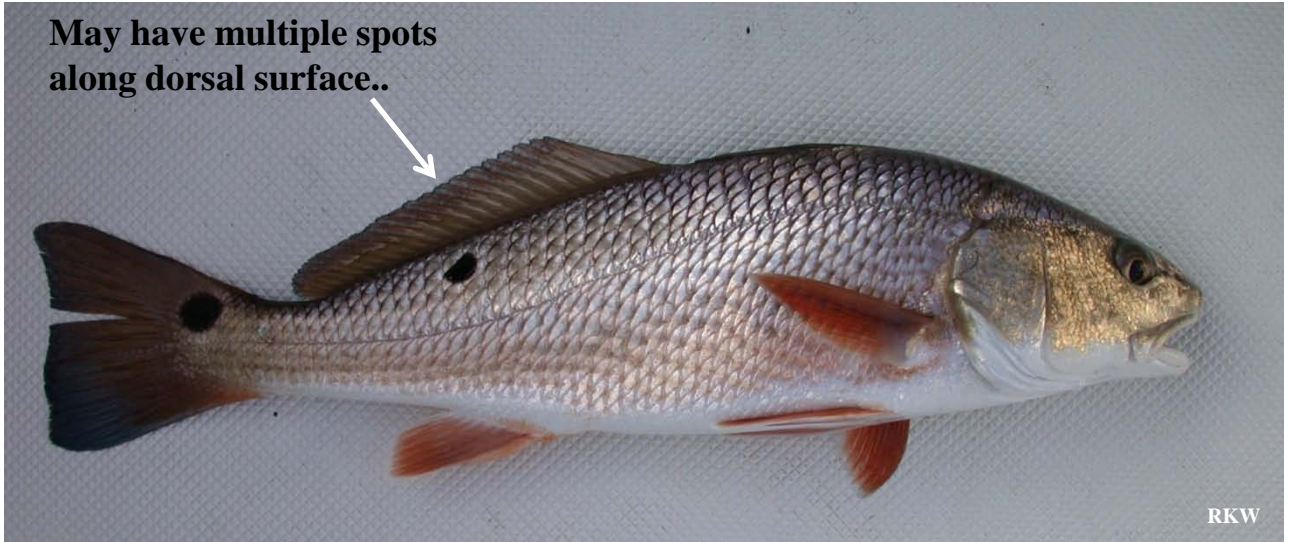




Inshore Fishes

Red Drum
(Spottail, redfish, channel bass, puppy drum,)
Sciaenops ocellatus

May have multiple spots
along dorsal surface..



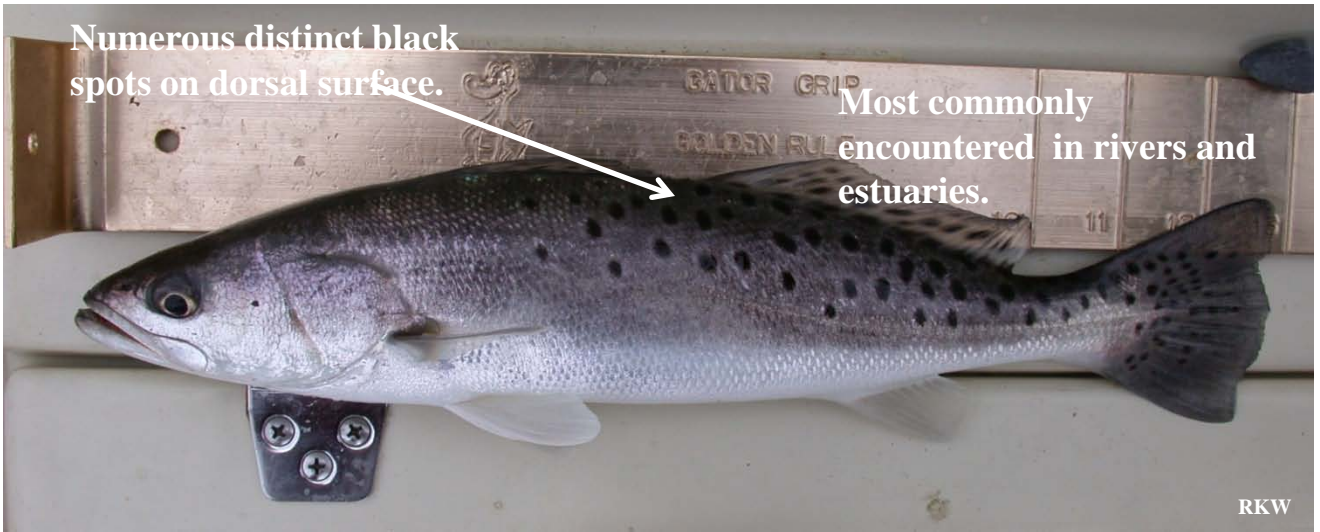
Black Drum
Pogonias cromis

Broad black vertical bars
along body.



Spotted Seatrout (Winter trout, speckled trout)

Cynoscion nebulosus



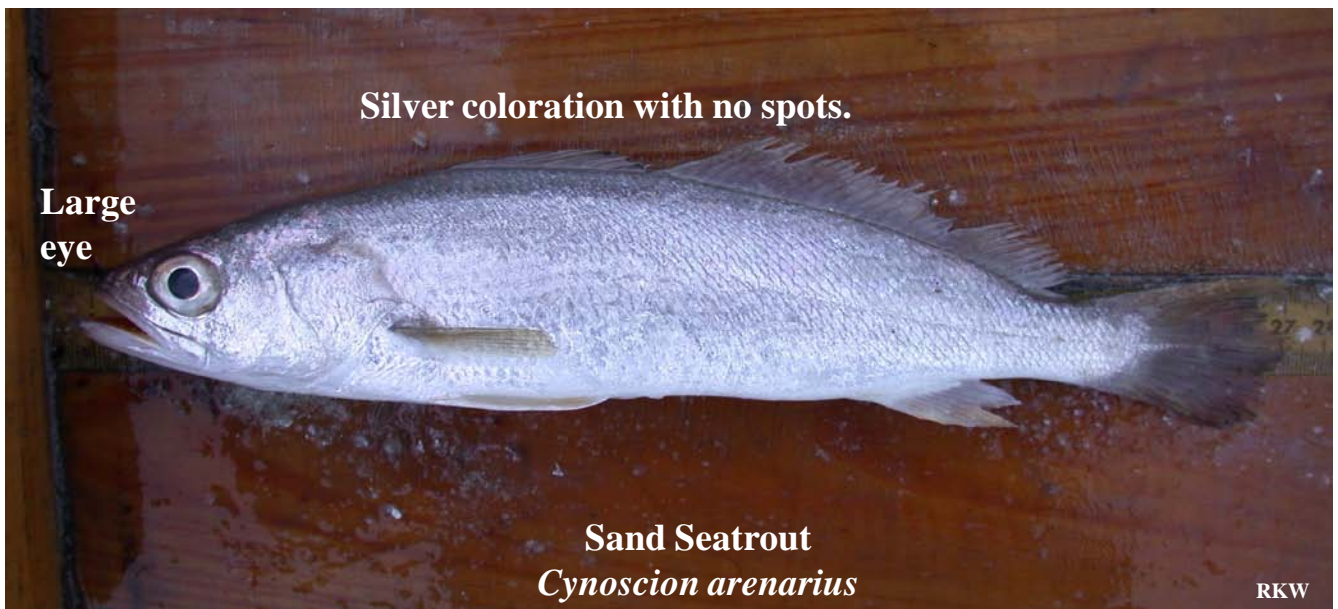
RKW



Weakfish (Summer trout, Gray trout)

Cynoscion regalis

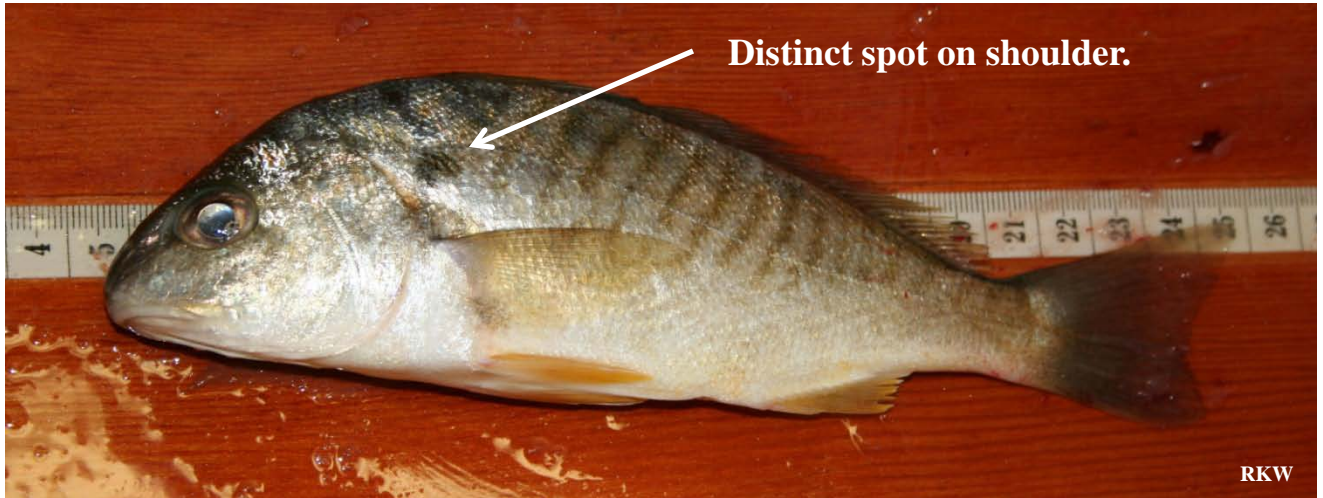
RKW



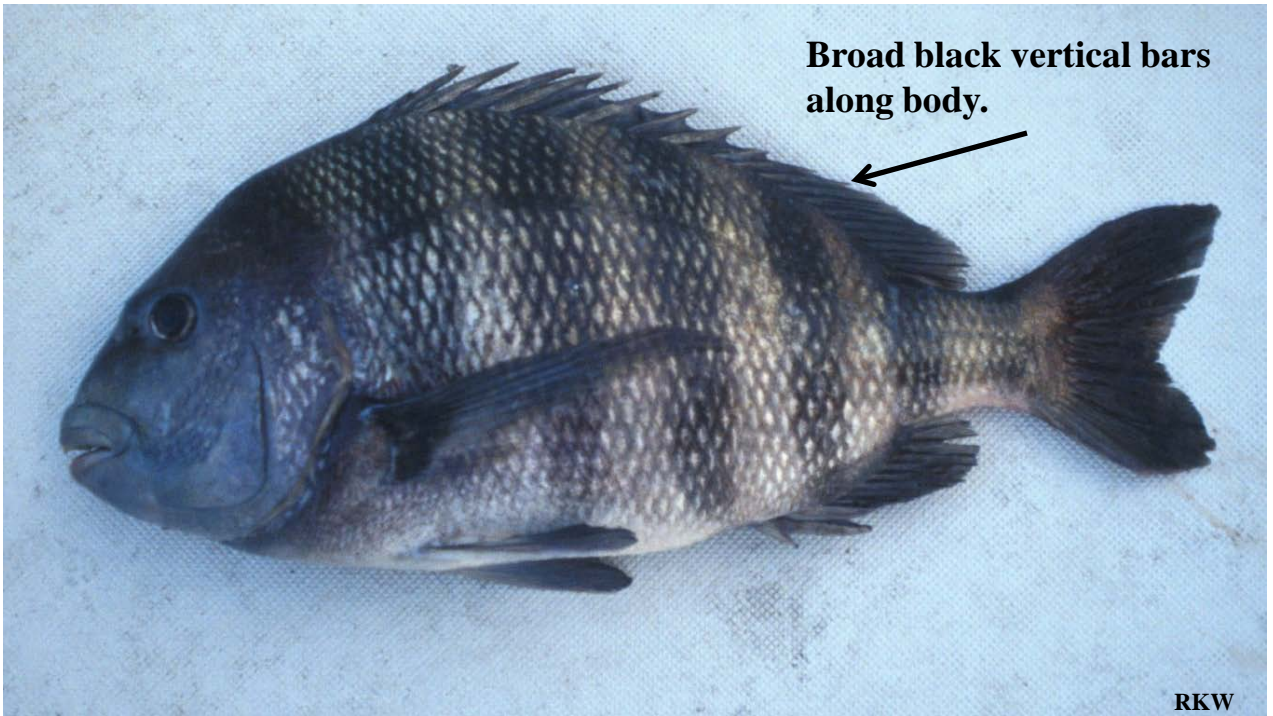
Sand Seatrout
Cynoscion arenarius

RKW

Spot
Leiostomus xanthurus



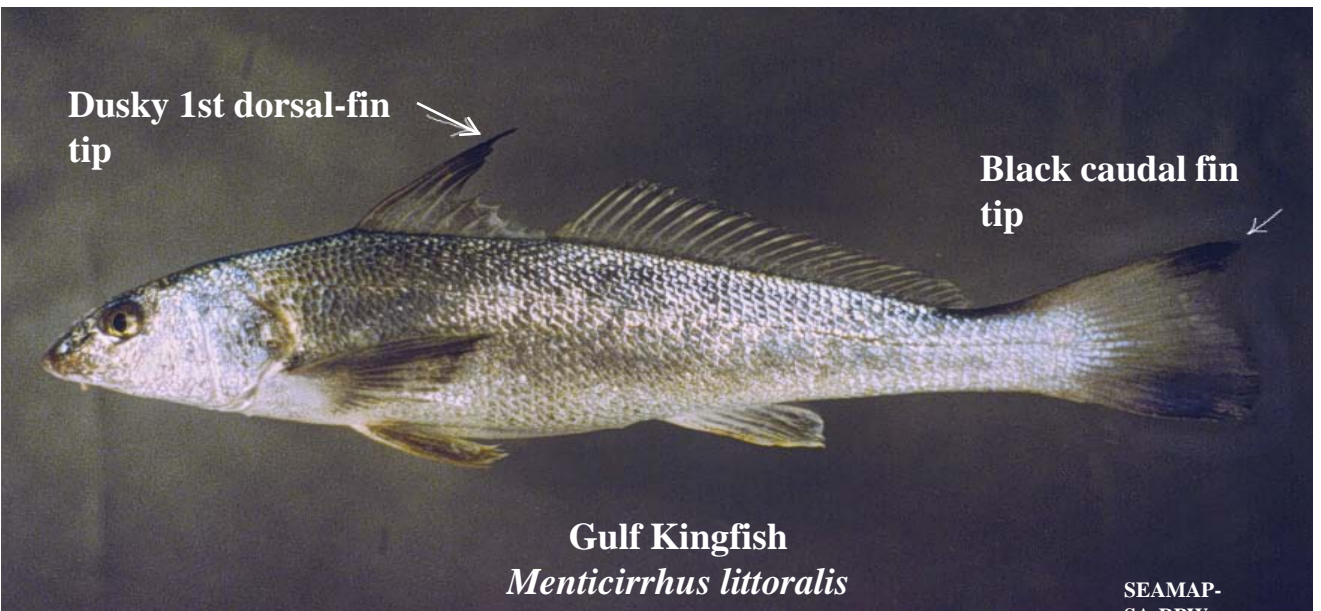
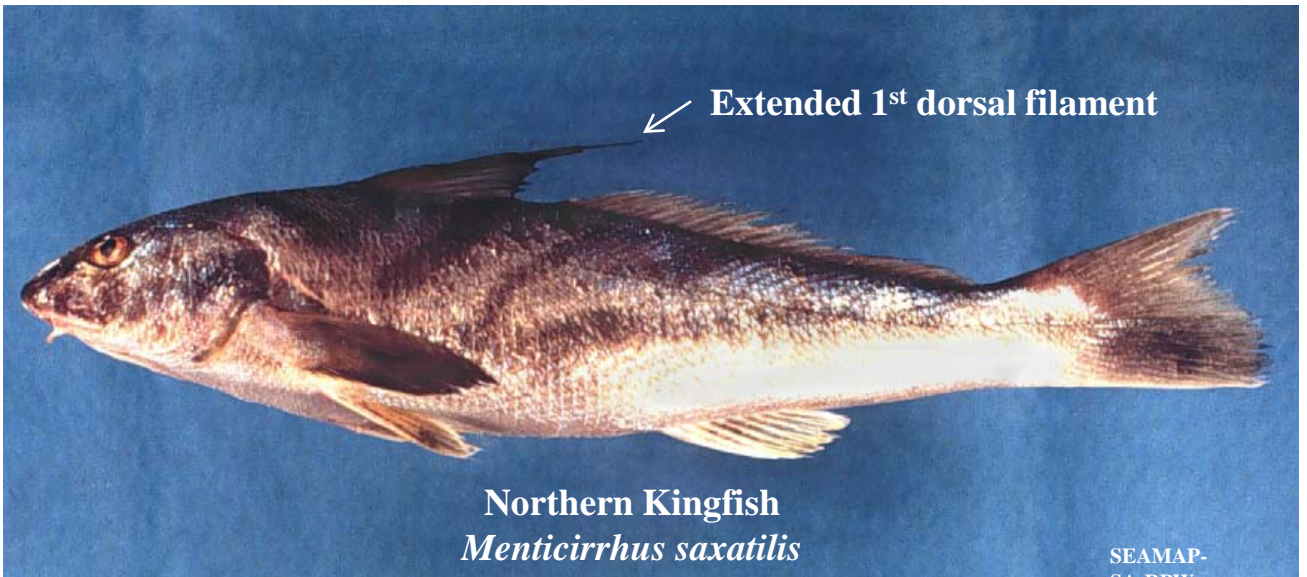
Sheepshead
Archosargus probatocephalus



Pinfish (Sailors Choice)
Lagodon rhomboides



Southern Kingfish (Whiting)
Menticirrhus americanus



Southern flounder
Paralichthys lethostigma



RKW

Bluefish
Pomatomus saltatrix



RKW



Inshore Lizardfish
Synodus foetens

RKW



RKW

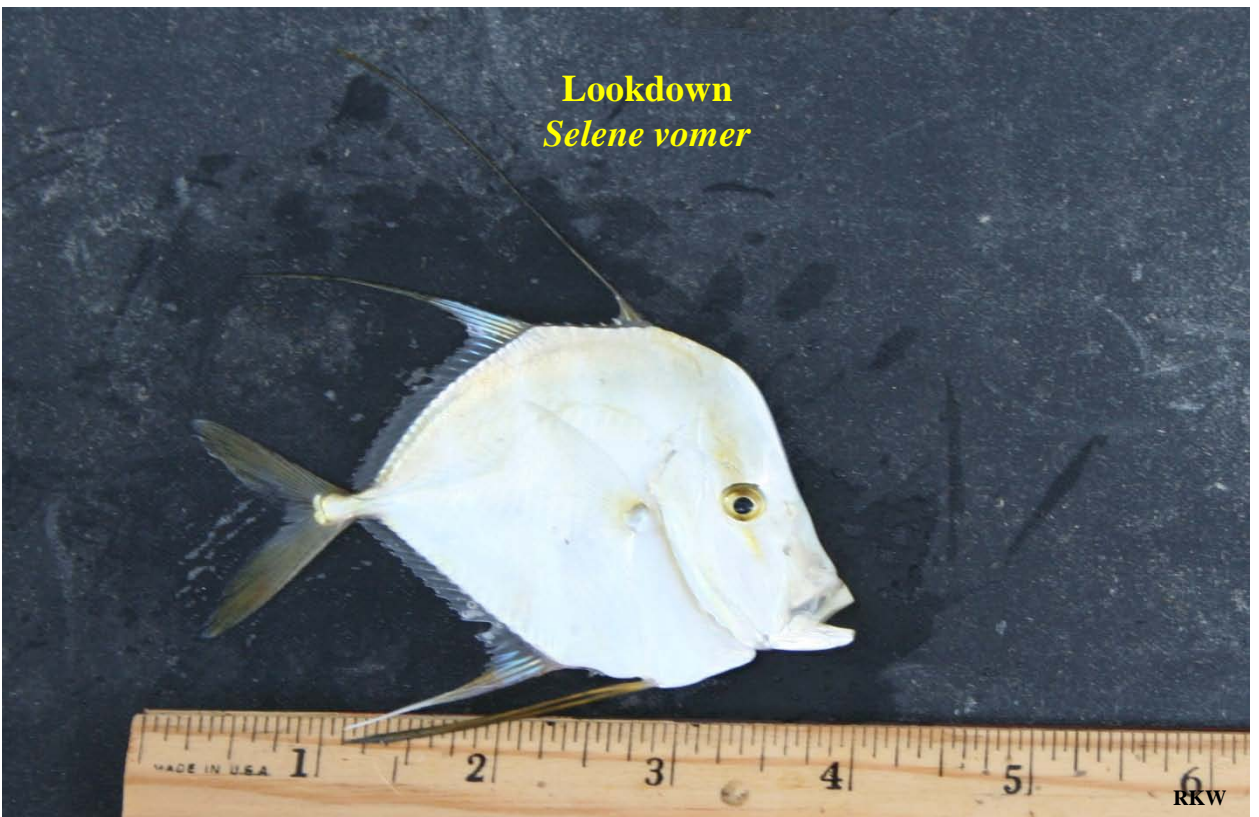
Ladyfish
Elops saurus

Florida Pompano
Trachinotus carolinus



RKW

Lookdown
Selene vomer



RKW

Spadefish

Chaetodipterus faber

Juvenile



Juvenile spadefish are commonly found in SC estuaries. Adults, which look identical to the specimen shown above, are common inhabitants of offshore reefs.

Cobia
Rachycentron canadum

Adult



Juvenile



Adult cobia are considered a coastal migratory species and are commonly encountered in near shore and offshore waters. Juveniles may occasionally be caught inshore.



**Other
Inshore
Fishes**

Striped Burrfish
Chilomycterus schoepfi



E. Vernon

Northern Puffer
Sphoeroides maculatus



E. Vernon

Northern Searobin
Prionotus carolinus



Batfish (sp. Unknown)
Ogcocephalus sp.



“Baitfish”

**or fish commonly caught in cast
nets or traps.**

Striped Mullet
Mugil cephalus



Atlantic Menhaden
Brevoortia tyrannus



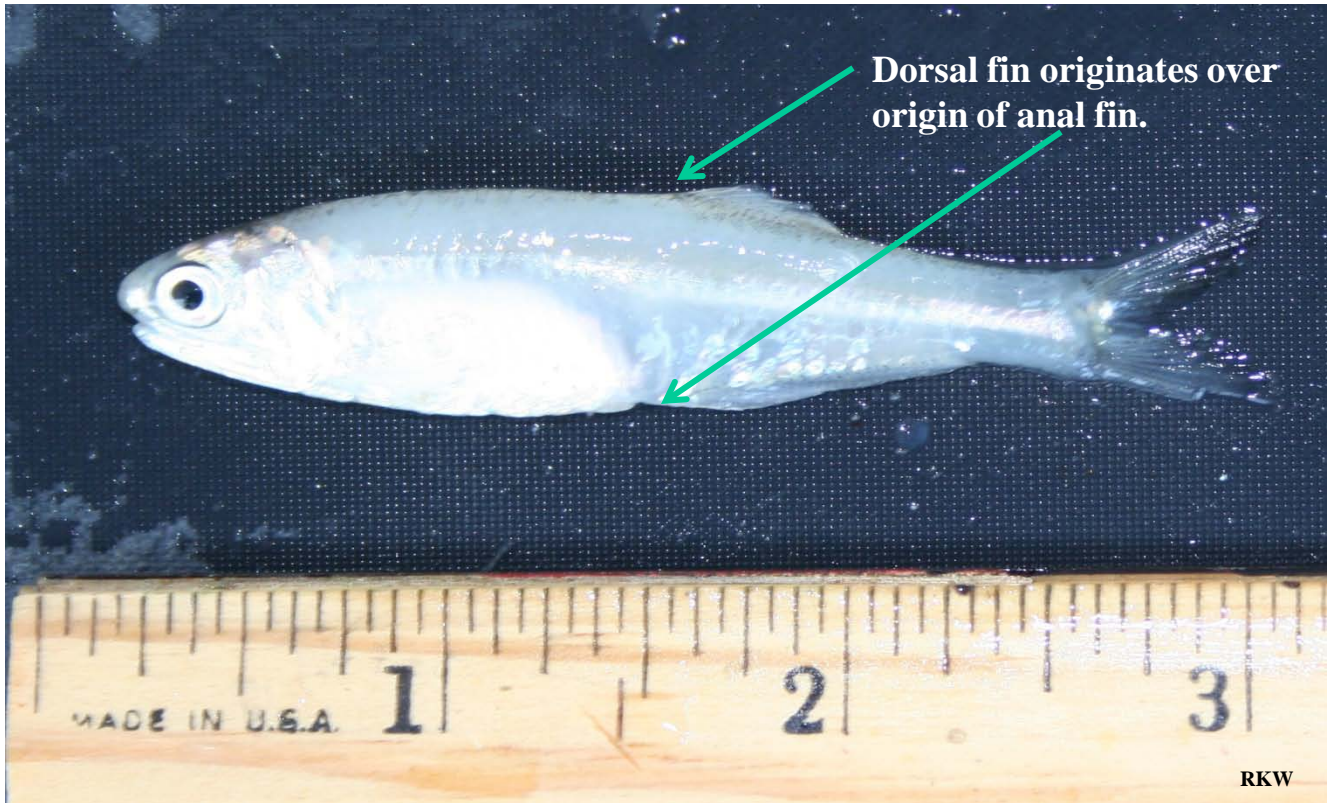
Striped killifish
Fundulus majalis



Mummichog (Mudminnow)
Fundulus heteroclitus



Bay Anchovy
Anchoa mitchilli



Atlantic Bumper
Chloroscombrus chrysurus



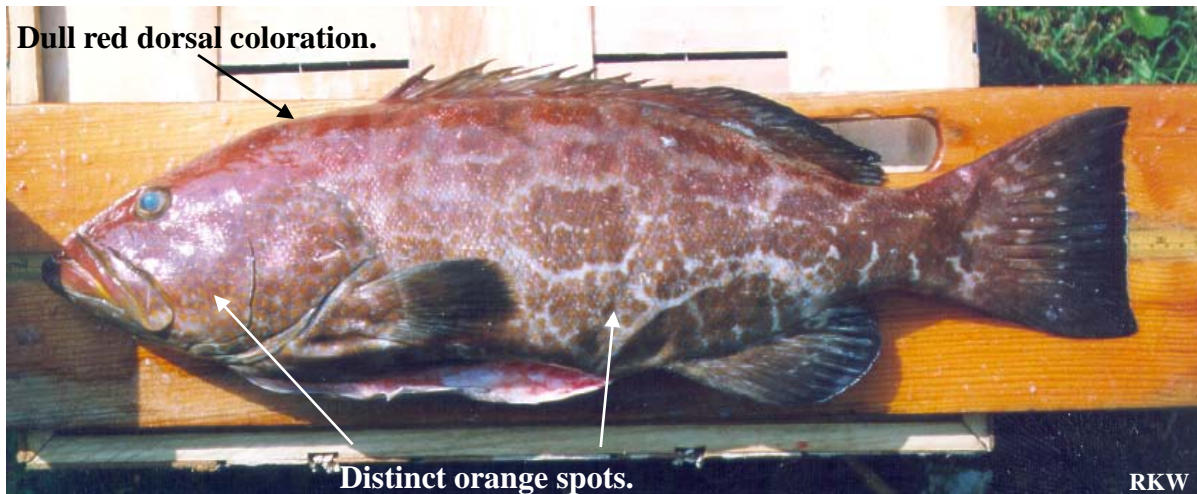


Offshore Fishes

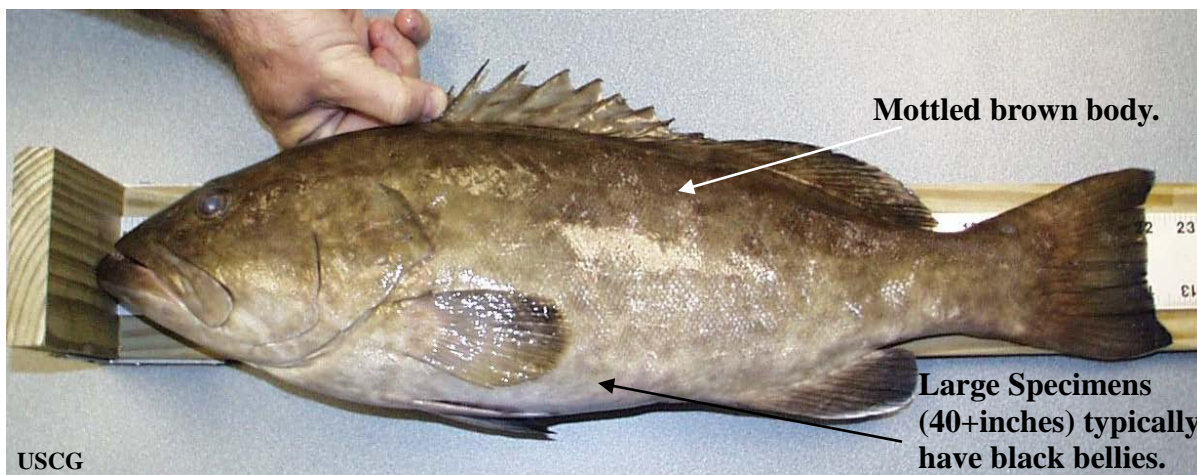


Groupier

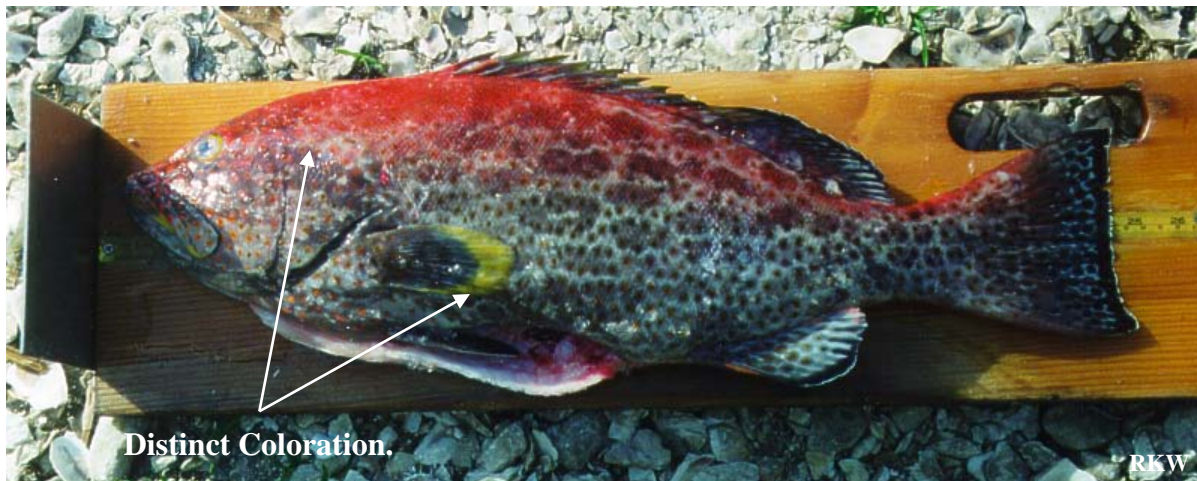
Black Grouper (Carberita)
Mycteroperca bonaci



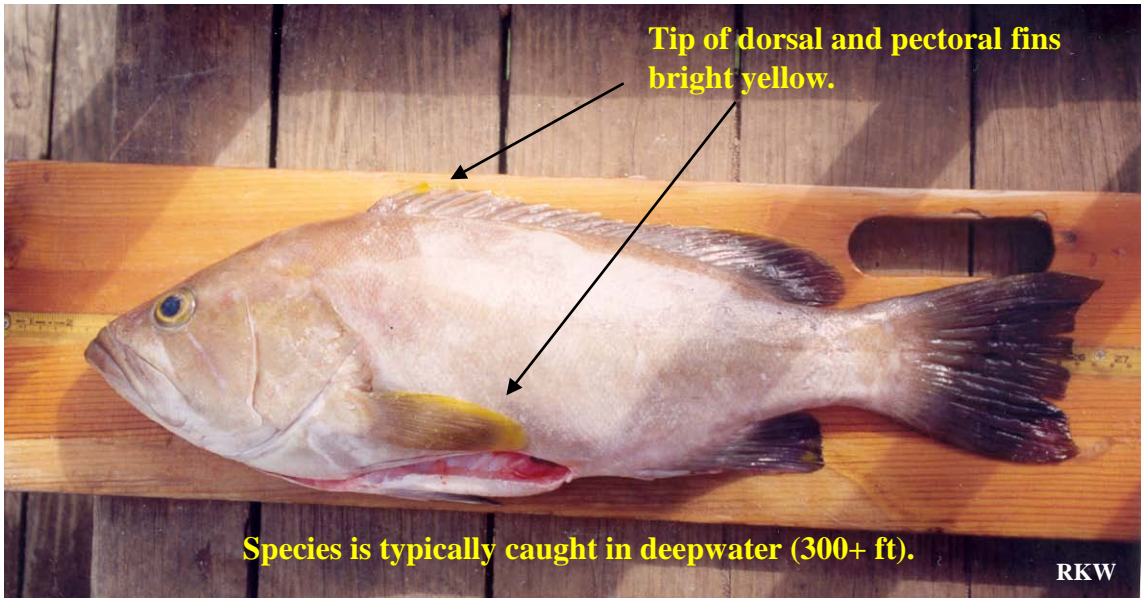
Gag Grouper (Grey, Black Grouper)
Mycteroperca microlepis



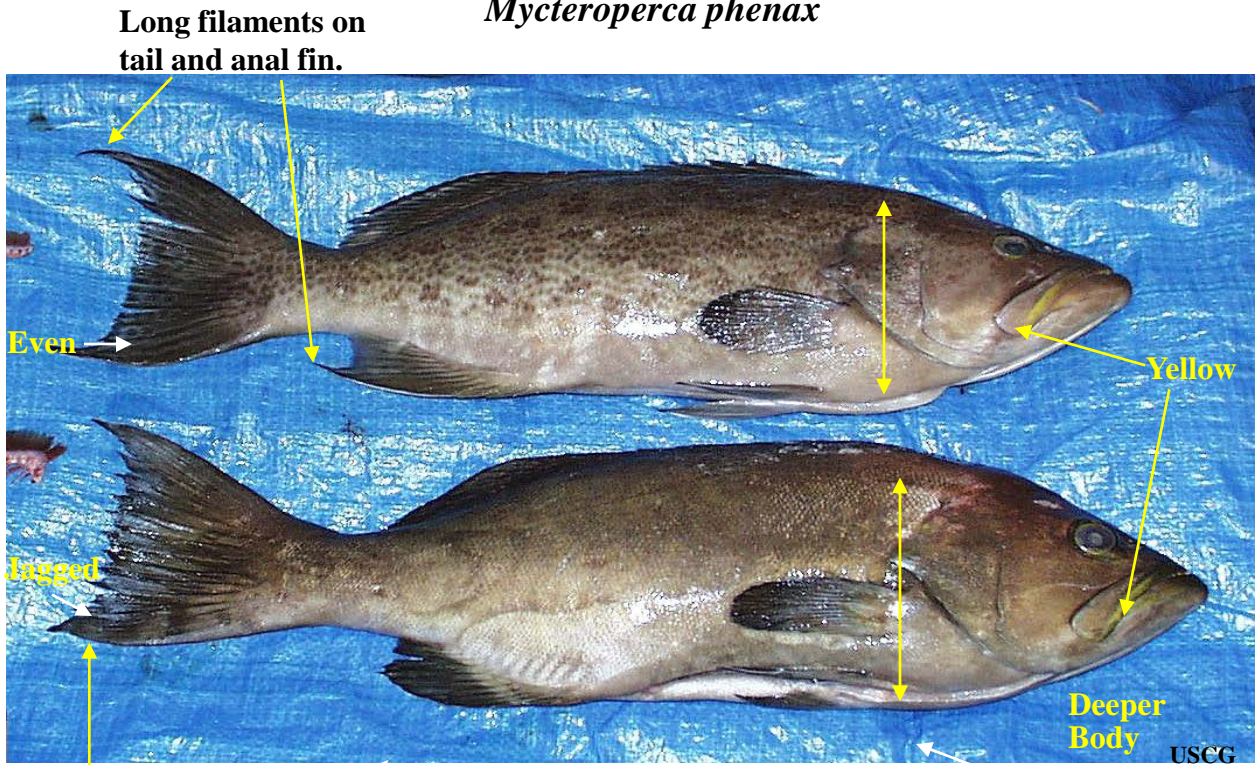
Yellowfin Grouper (Fireback)
Mycteroperca venenosa



Yellowedge Grouper
Epinephelus flavolimbatus



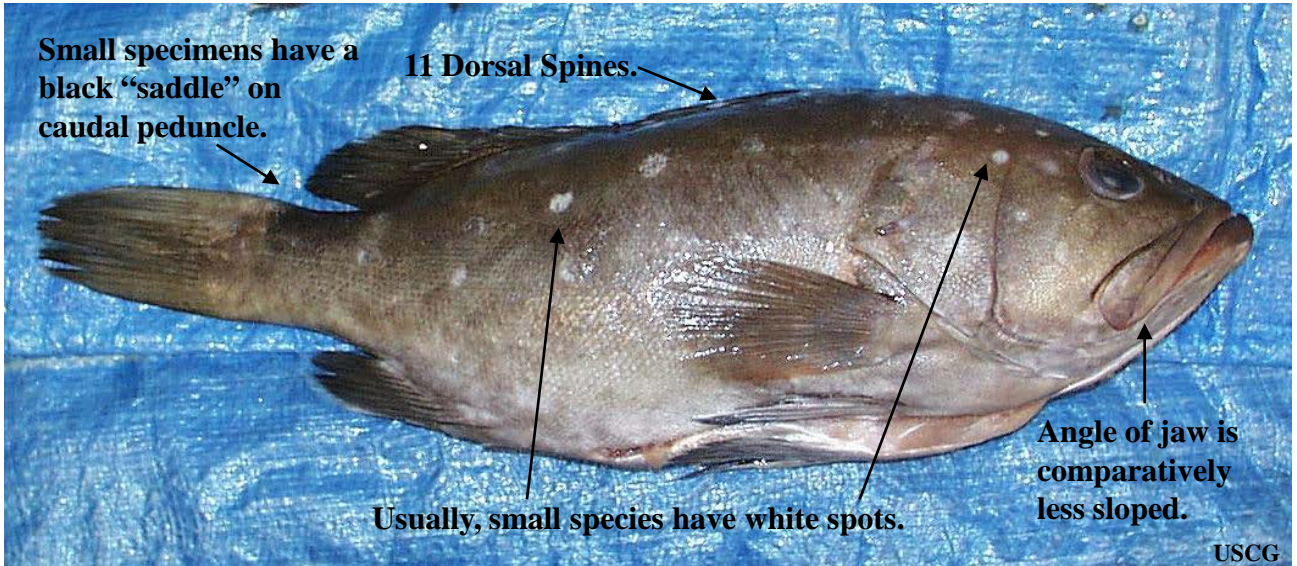
Scamp (Broomtail)
Mycteroperca phenax



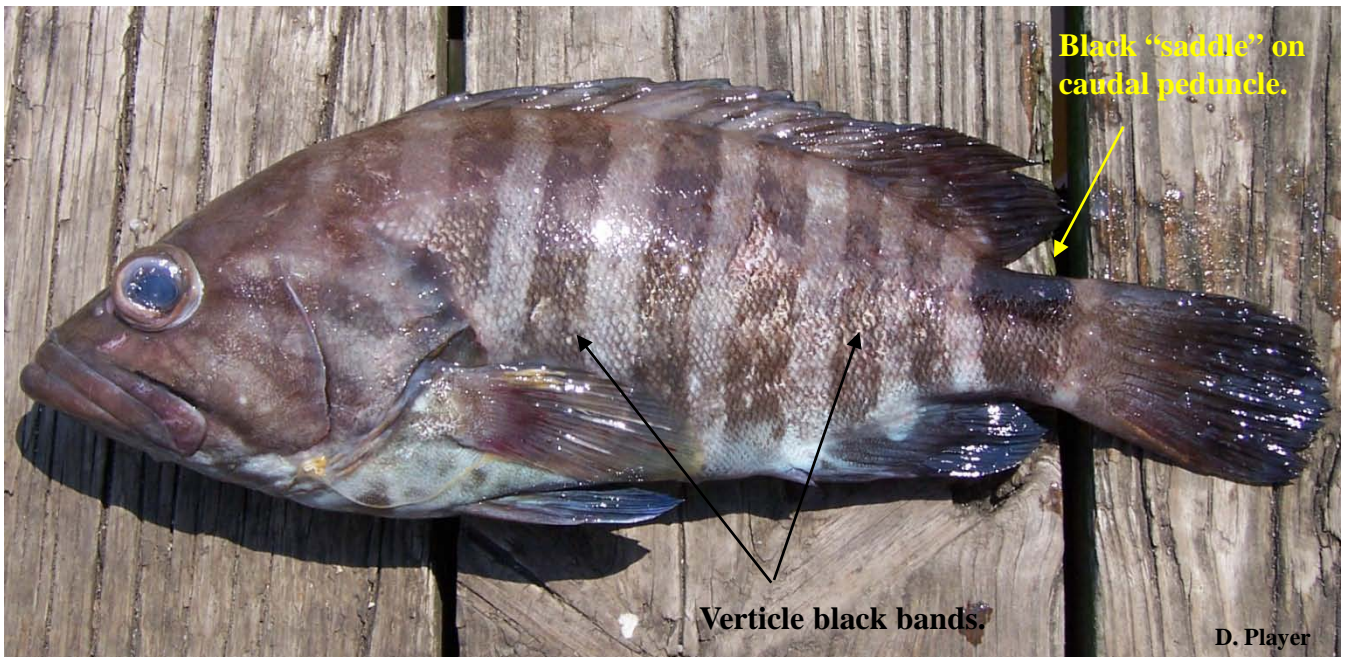
Tail and anal fin lack long filaments.

Yellowmouth Grouper
Mycteroperca interstitialis

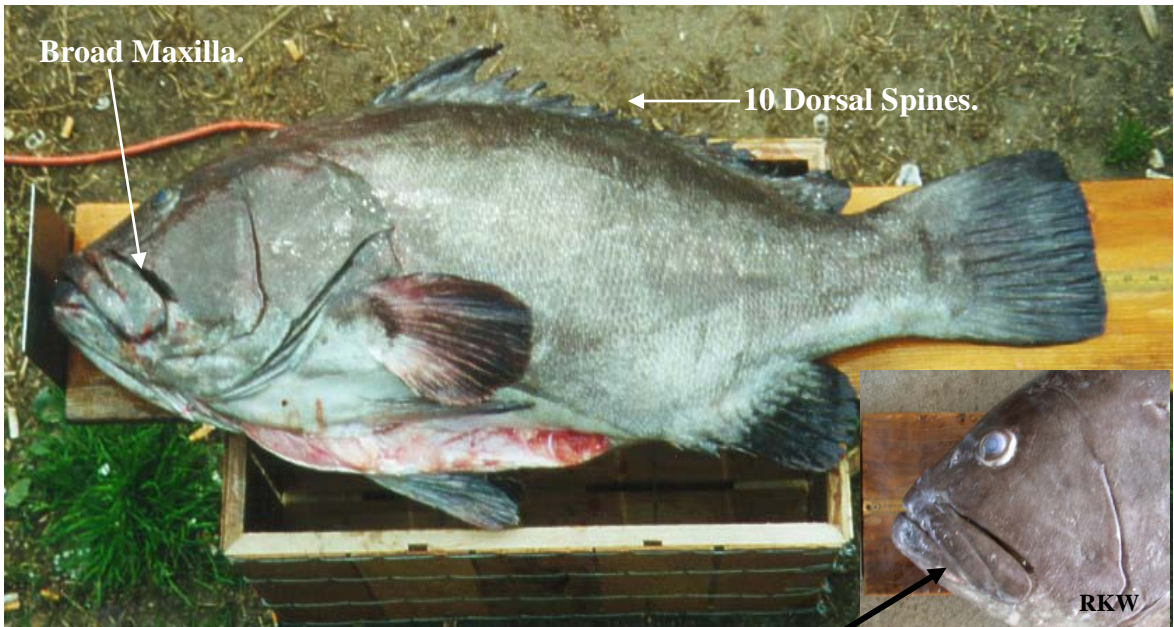
Snowy Grouper
Epinephelus niveatus



Misty Grouper
Epinephelus mystacinus



Warsaw Grouper
Epinephelus nigritus



With mouth closed jaw is at a steep angle and extends to posterior part of eye but not beyond.

Goliath Grouper (Jewfish)
Juvenile
Epinephelus itajara



Membrane between dorsal spines even with the tips of the spines.

Red Grouper
Epinephelus morio



Nassau Grouper
Epinephelus striatus



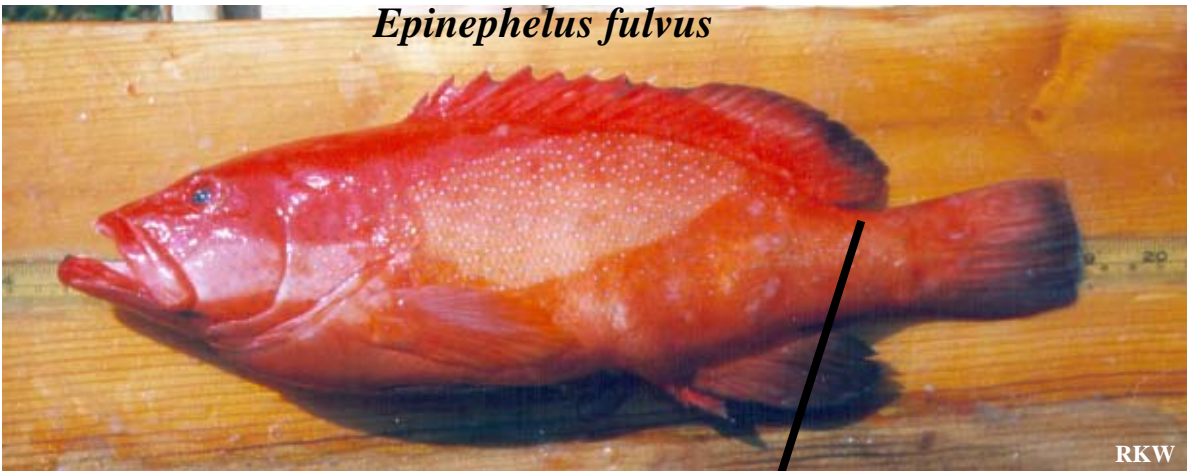
Speckled Hind (Kitty Mitchell, Strawberry)
Epinephelus drummondhayi

Most common color pattern is a dark purple with white specks.



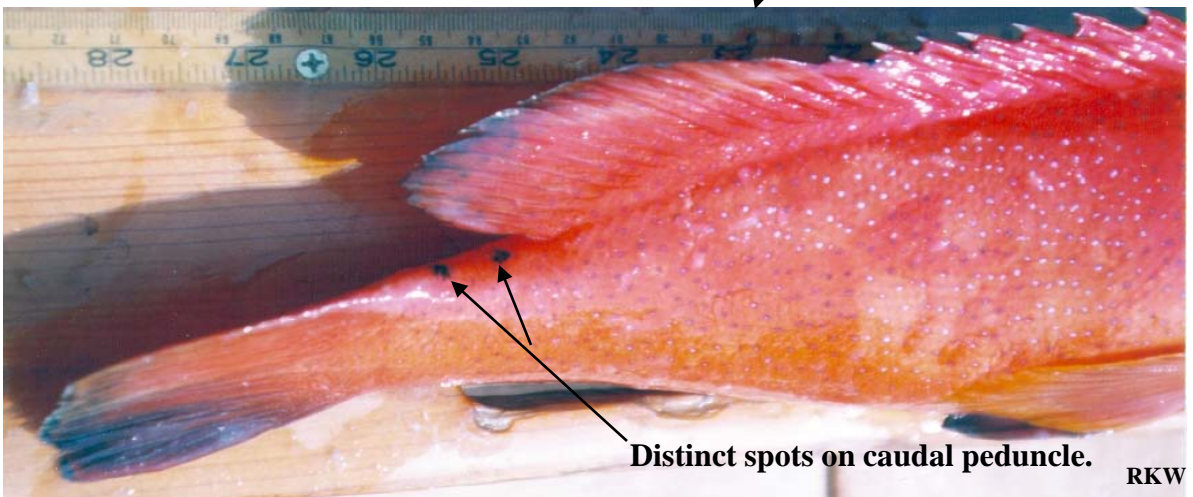
RKW

Coney (Red Phase)
Epinephelus fulvus



RKW

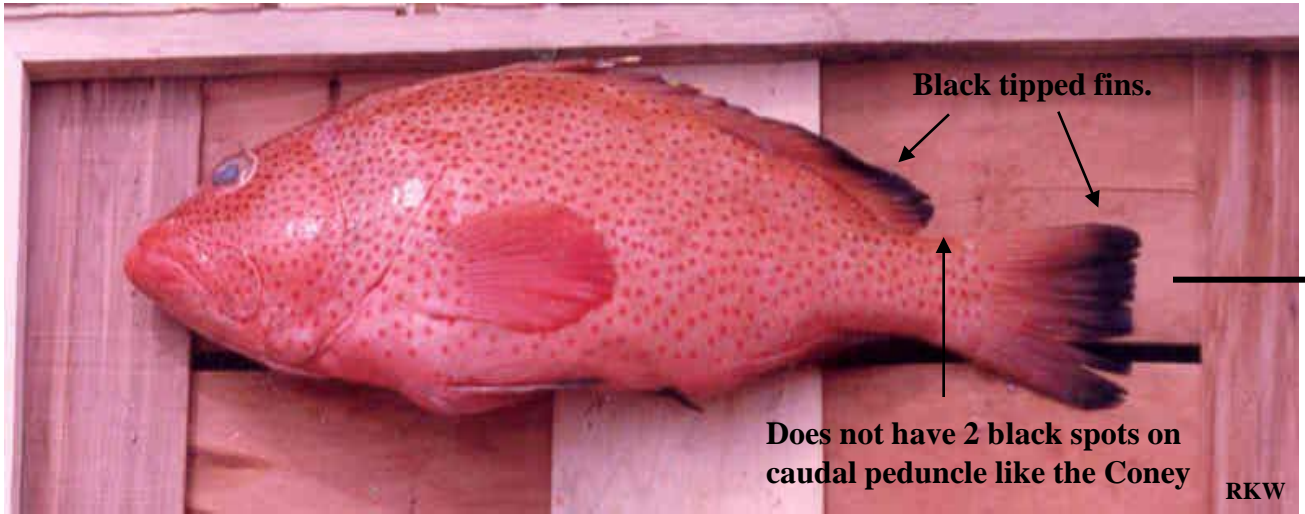
Coney



Distinct spots on caudal peduncle.

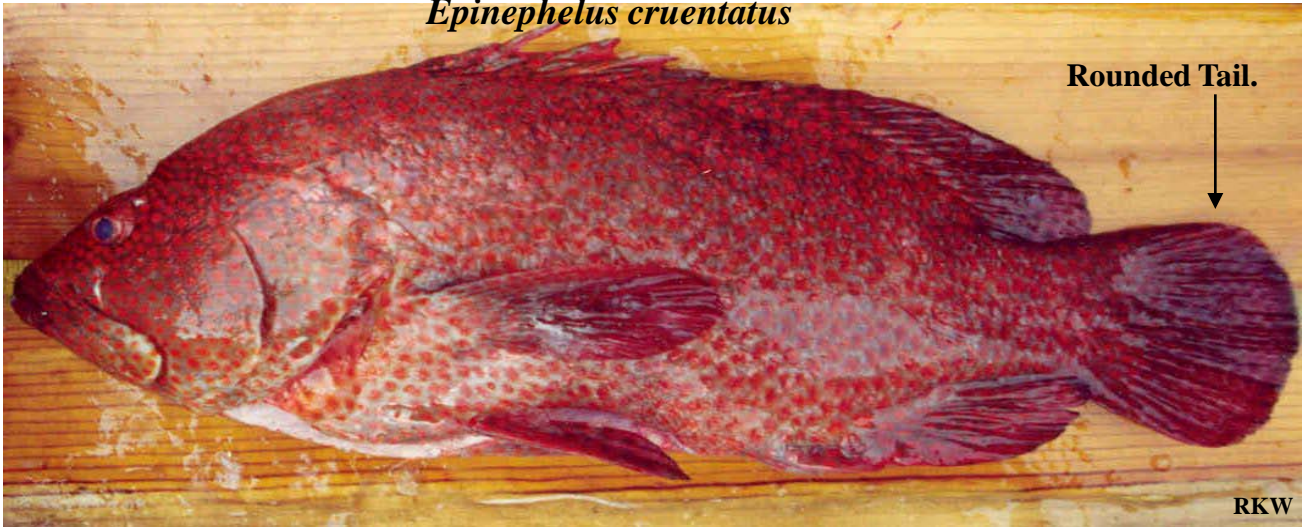
RKW

Red Hind
Epinephelus guttatus



Graysby

Epinephelus cruentatus



Rock Hind (Strawberry Grouper)

Epinephelus adscensionis

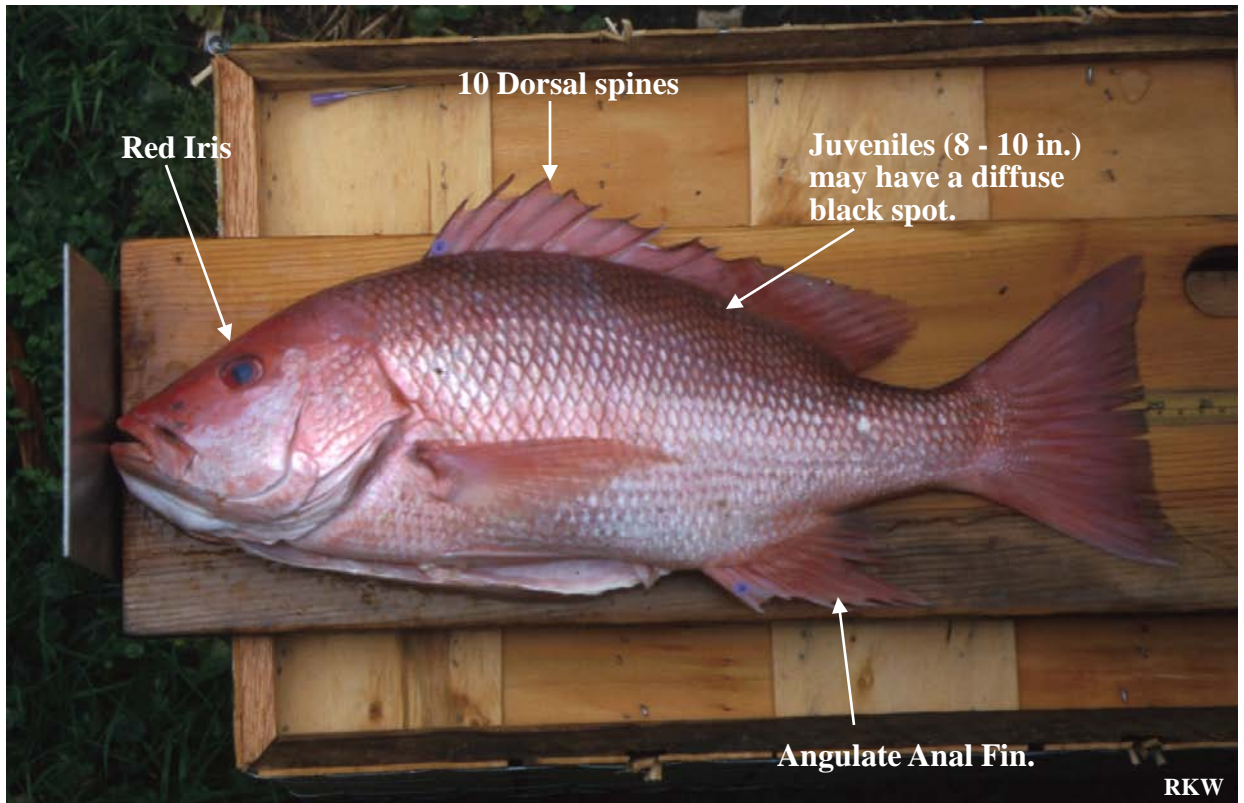


16''

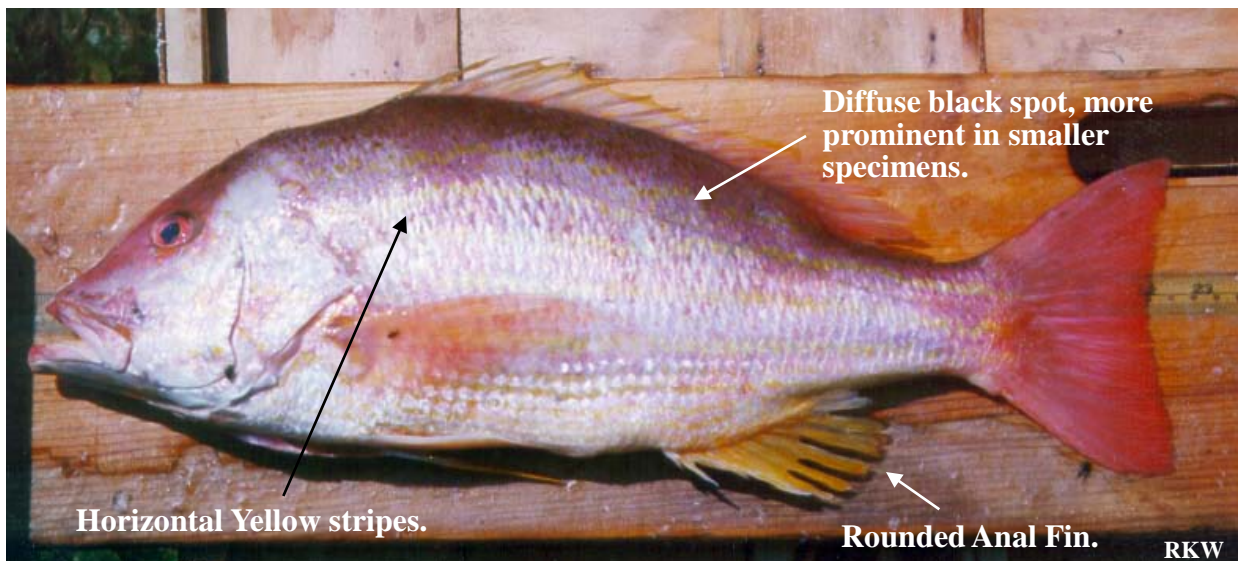


Snapper

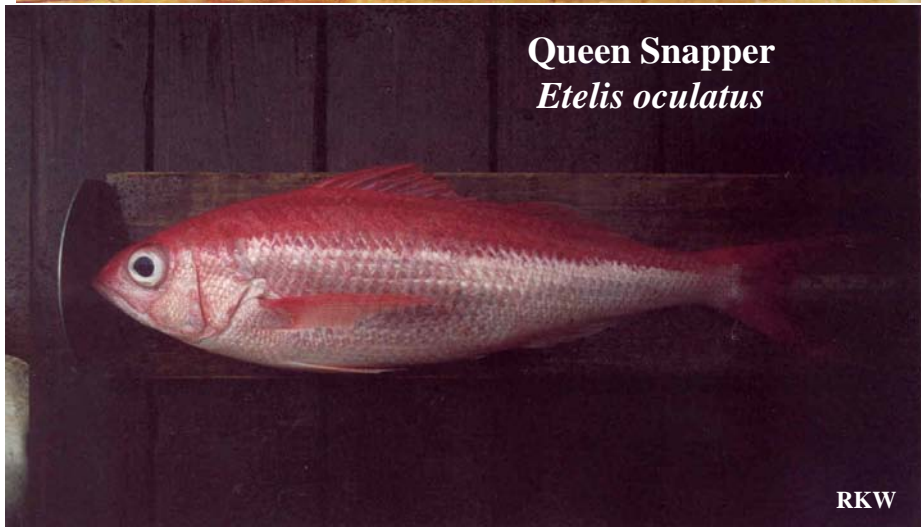
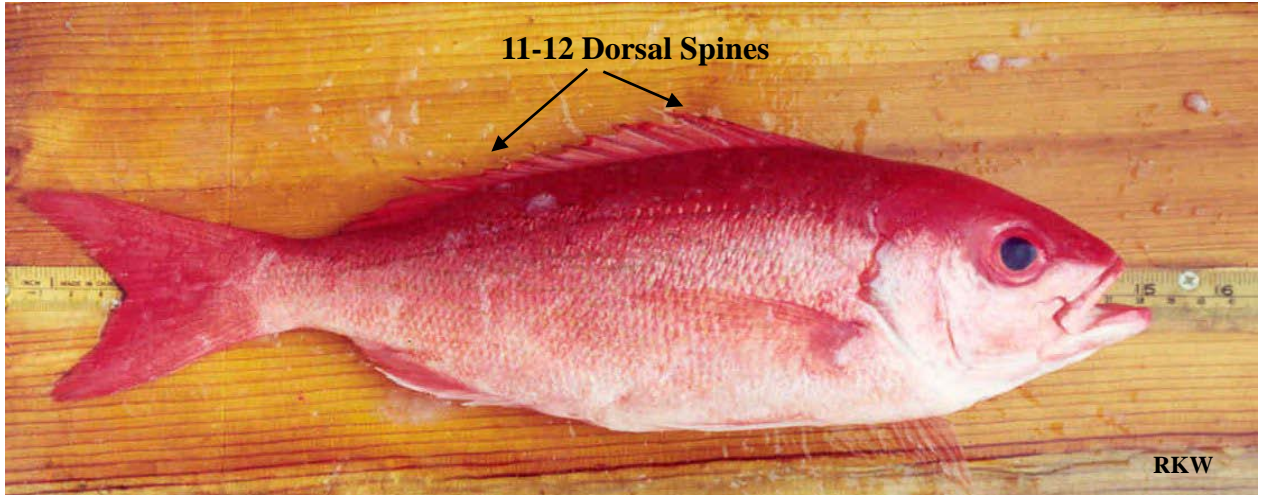
Red Snapper (AM Red, Genuine)
Lutjanus campechanus



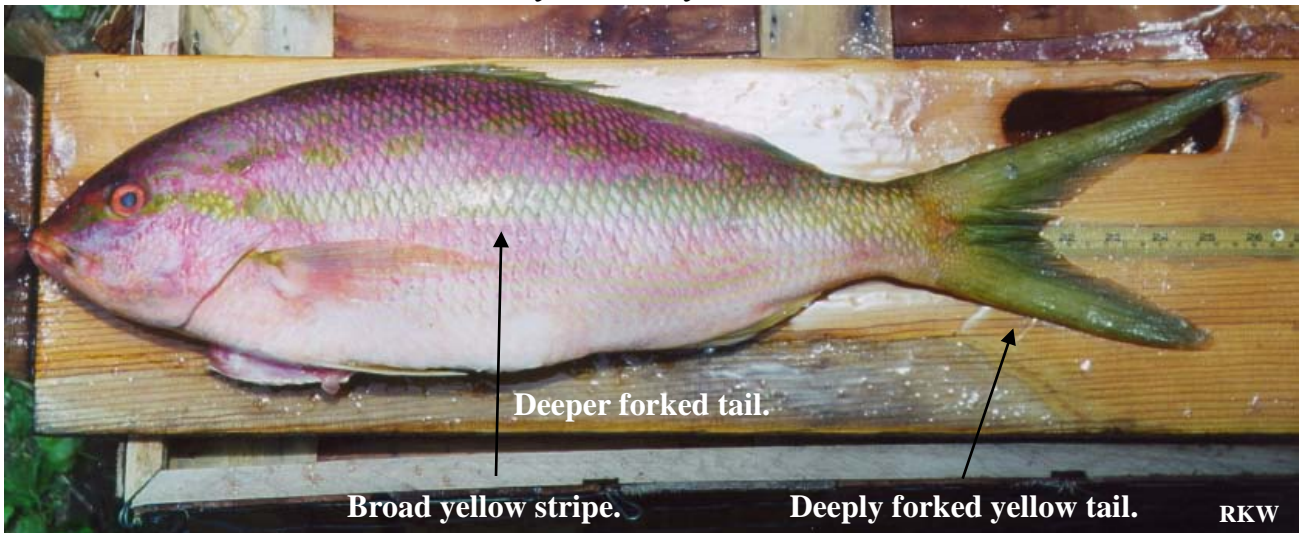
Lane Snapper (Candy Snapper)
Lutjanis synagris



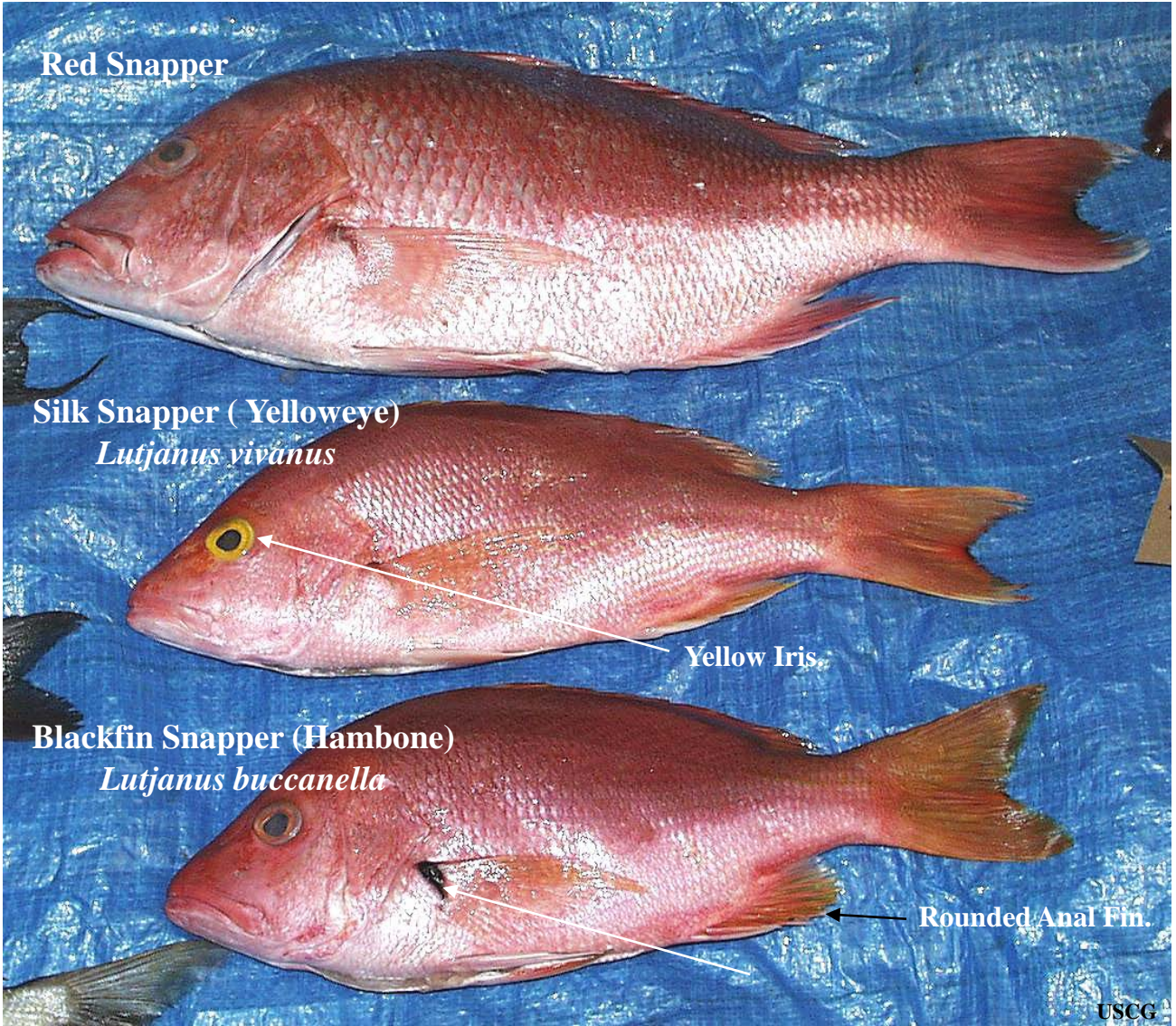
Vermilion Snapper (B-liner)
Rhomboplites aurorubens



Yellowtail Snapper
Ocyurus chrysurus



Snapper Comparison



Red Snapper

Silk Snapper (Yelloweye)
Lutjanus vivanus

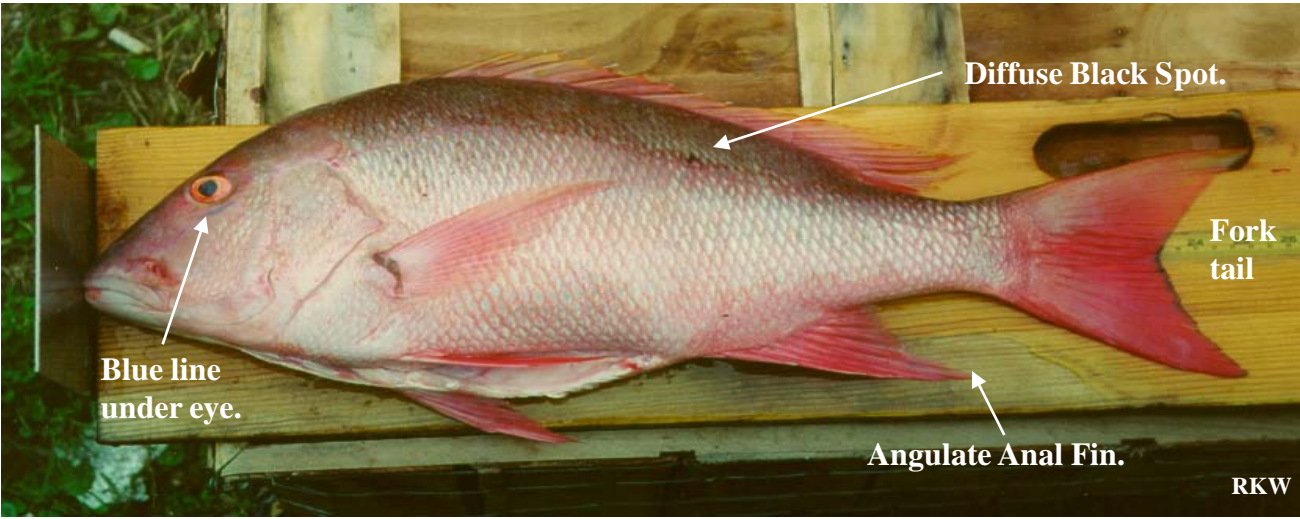
Yellow Iris

Blackfin Snapper (Hambone)
Lutjanus buccanella

Rounded Anal Fin.

USCG

Mutton Snapper *Lutjanus analis*



Diffuse Black Spot.

Fork tail

Blue line under eye.

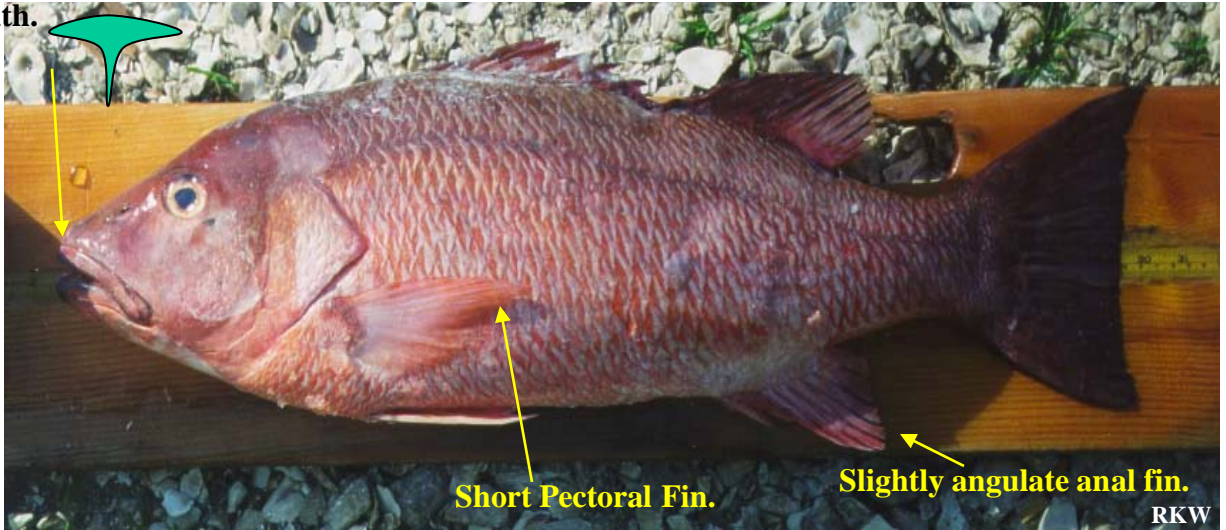
Angulate Anal Fin.

RKW

Gray Snapper (Mangrove Snapper)

Lutjanus griseus

Anchor-shaped tooth patch on roof of mouth.



Short Pectoral Fin.

Slightly angulate anal fin.

RKW

Cubera Snapper

Lutjanus cyanopterus

Chevron-shaped tooth patch on roof of mouth.



Large Canine Teeth.

Long Pectoral Fin.

Rounded Anal Fin.

RKW

Dog Snapper

Lutjanus jocu

Anchor-shaped tooth patch on roof of mouth.



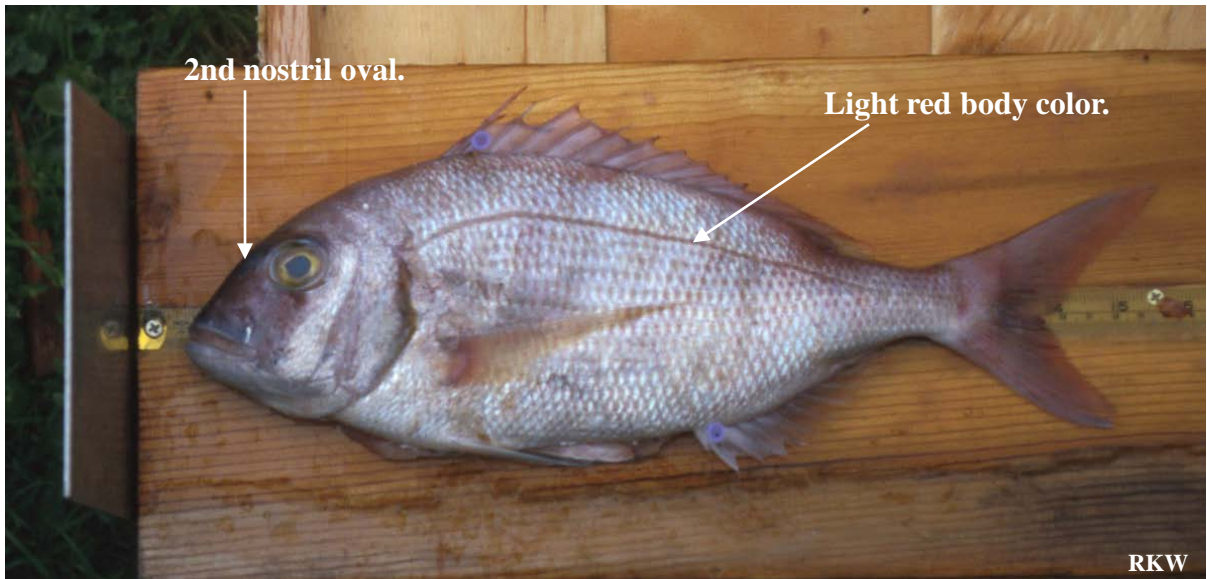
White triangular spot under eye.

RKW

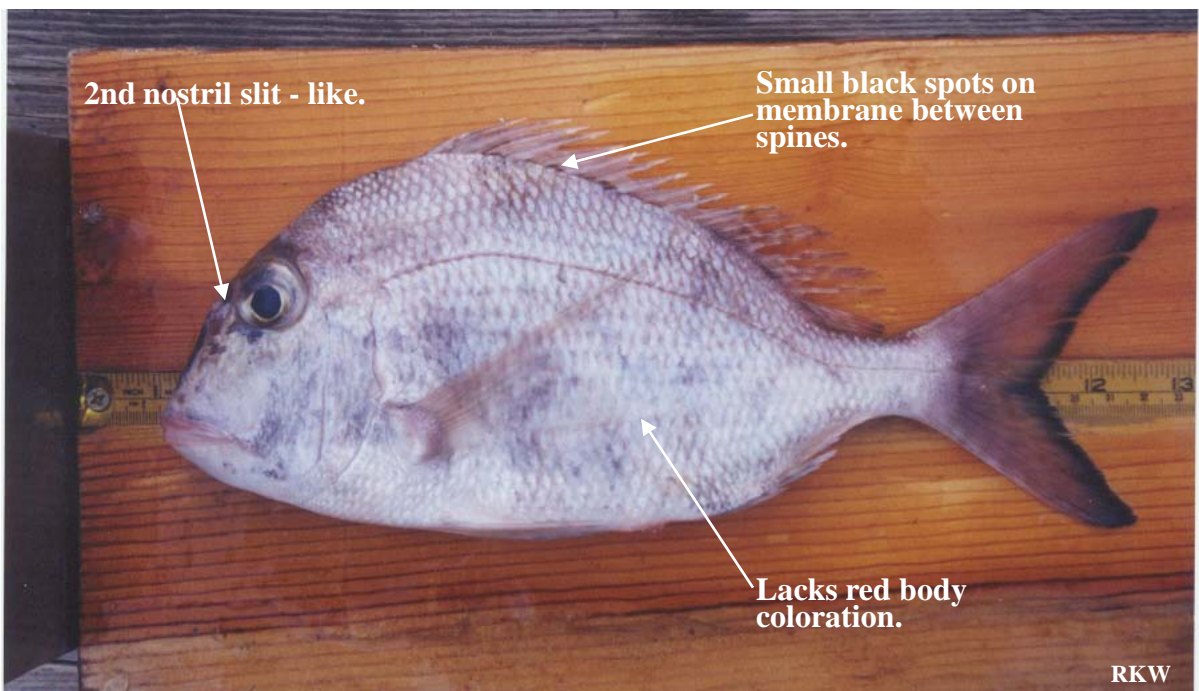


Porgy

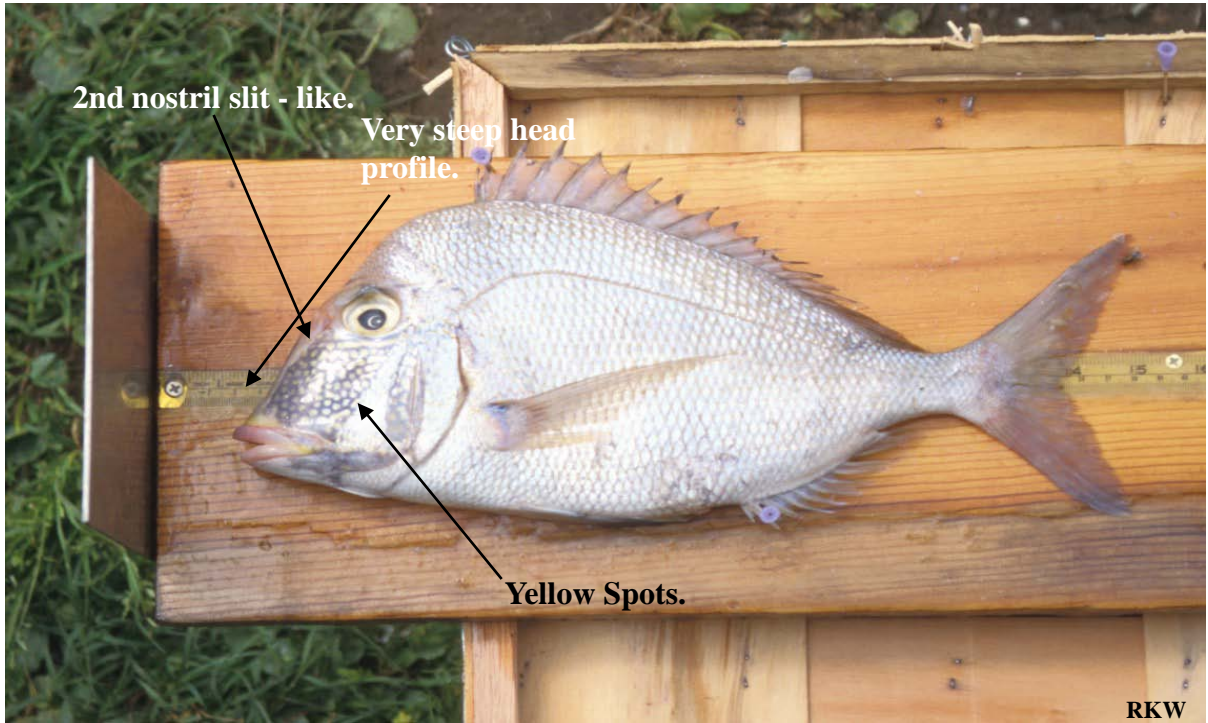
Red Porgy
(Silver Snapper, Pinky, Pink Snapper)
Pagrus pagrus



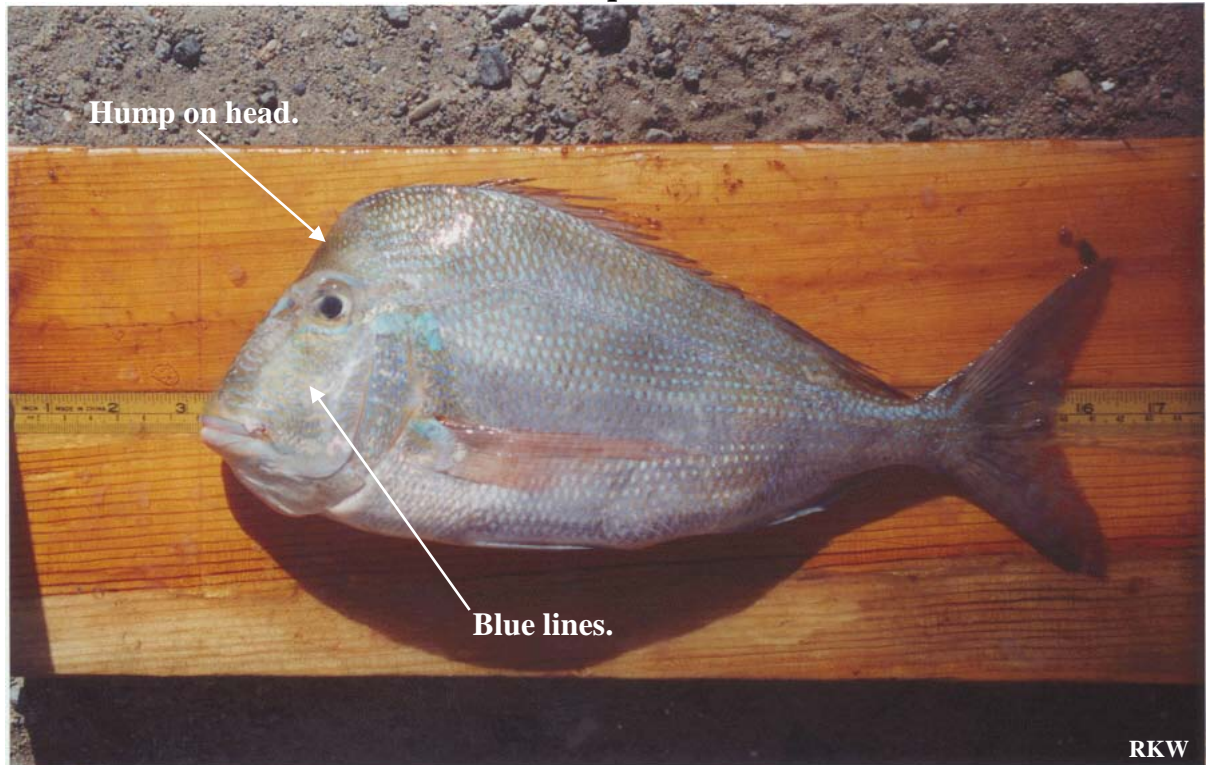
Whitebone Porgy (Chocolate Porgy)
Calamus leucosteus



Knobbed Porgy (Jolthead)
Calamus nodosus



Littlehead Porgy
Calamus proridens

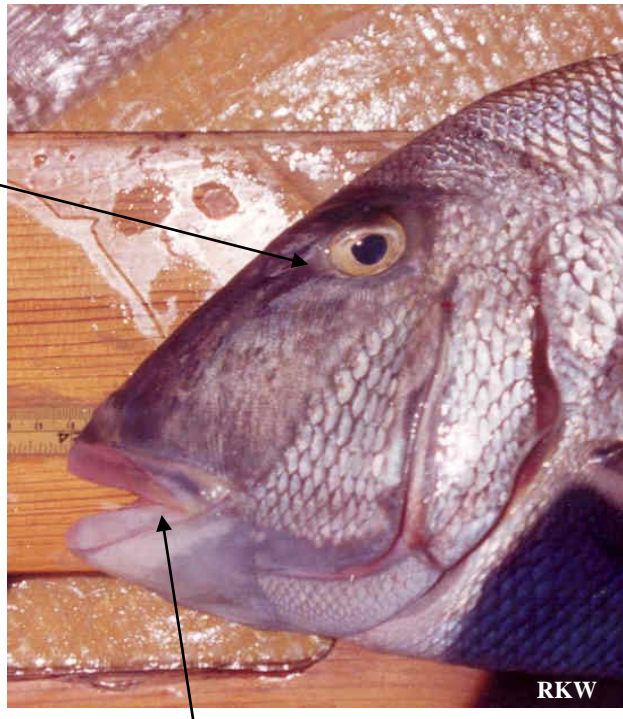


Jolthead Porgy
Calamus bajonado



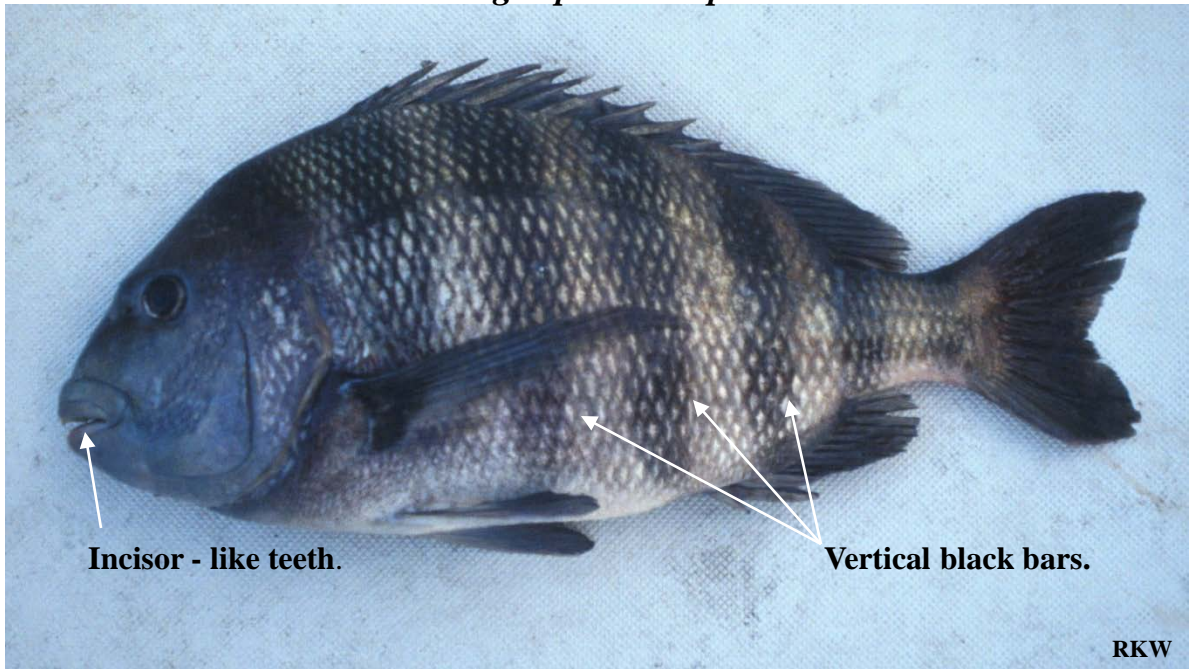
Jolthead Porgy (Anterior)

Distinct blue line under eye.

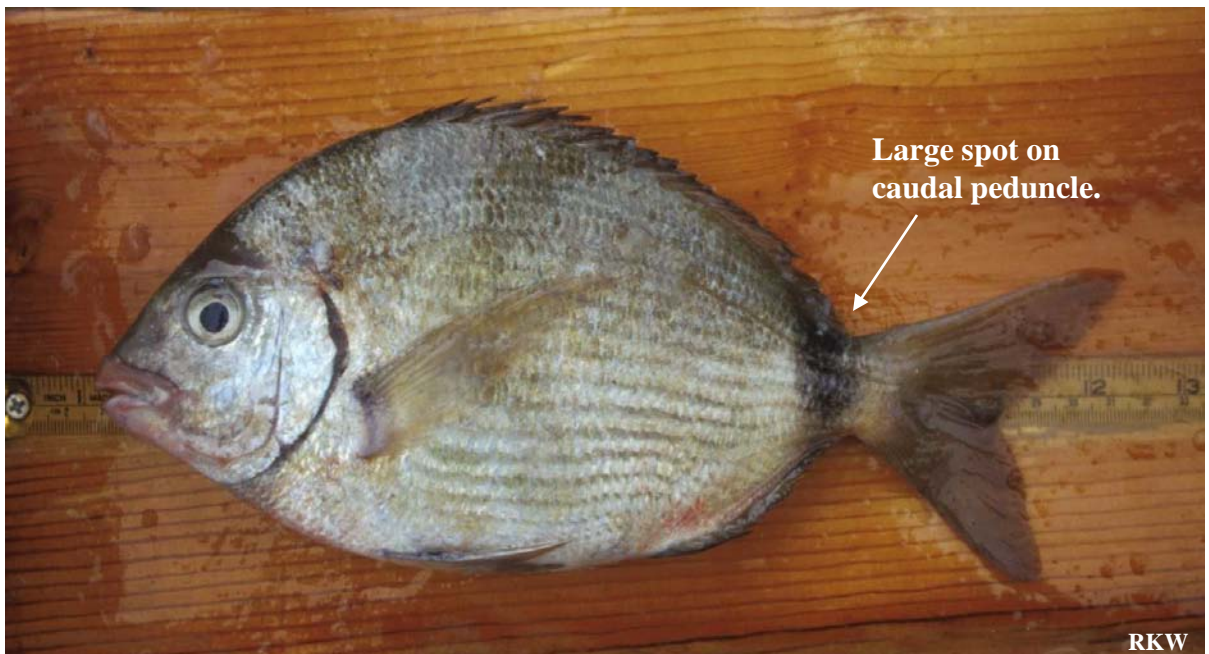


Orange on inside corner of mouth.

Sheepshead
Archosargus probatocephalus



Spottail Pinfish (Ringtail)
Diplodus holbrooki





Seabass

Black Sea Bass (Blackfish)
Centropristis striata

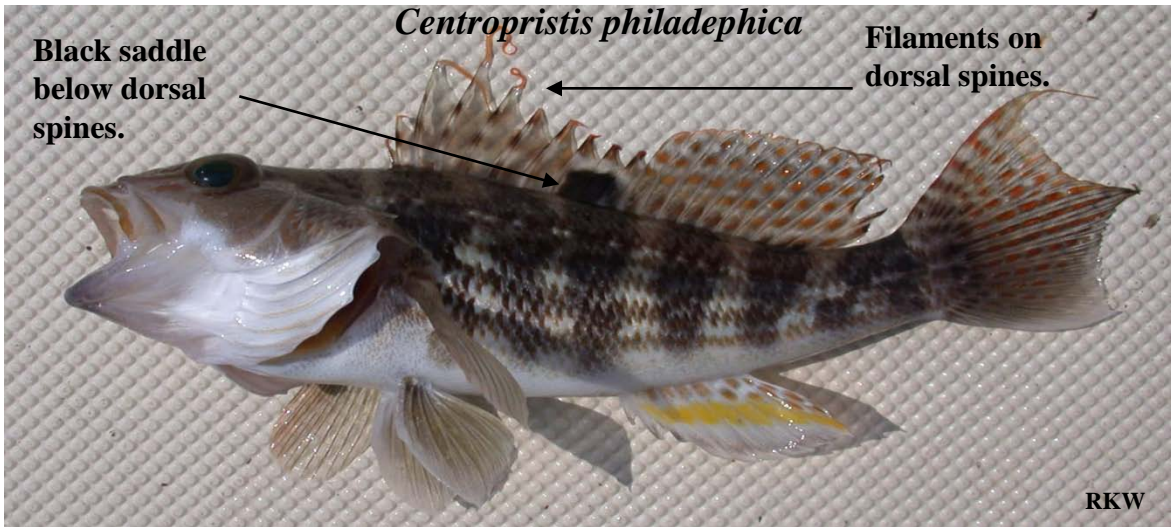


Rock Sea Bass

Centropristis philadelphica

Black saddle
below dorsal
spines.

Filaments on
dorsal spines.

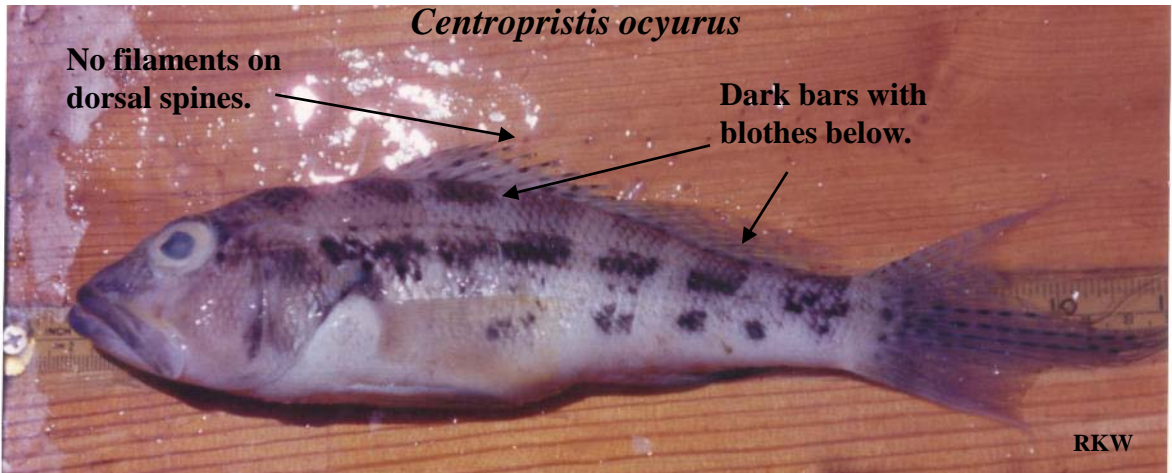


Bank Sea Bass

Centropristis ocyurus

No filaments on
dorsal spines.

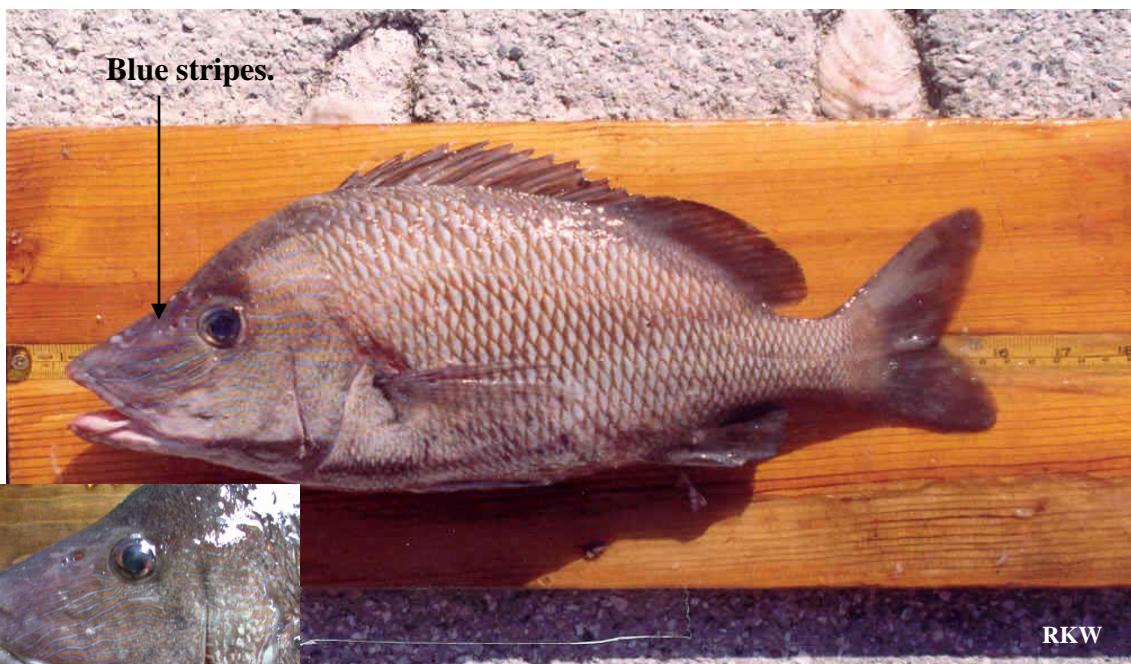
Dark bars with
blotches below.





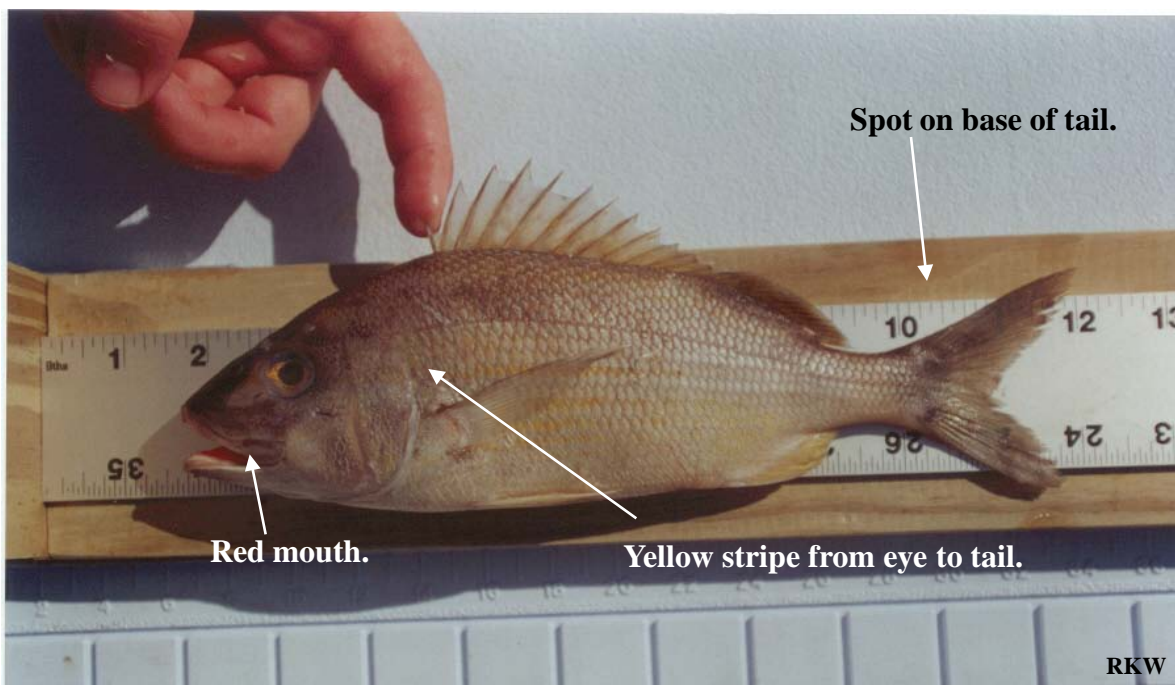
Grunts

White Grunt
Haemulon plumieri



All species of Western Atlantic grunts have red on inside of the mouth.

Tomtate
Haemulon aurolineatum



Bluestriped Grunt
Haemulon sciurus



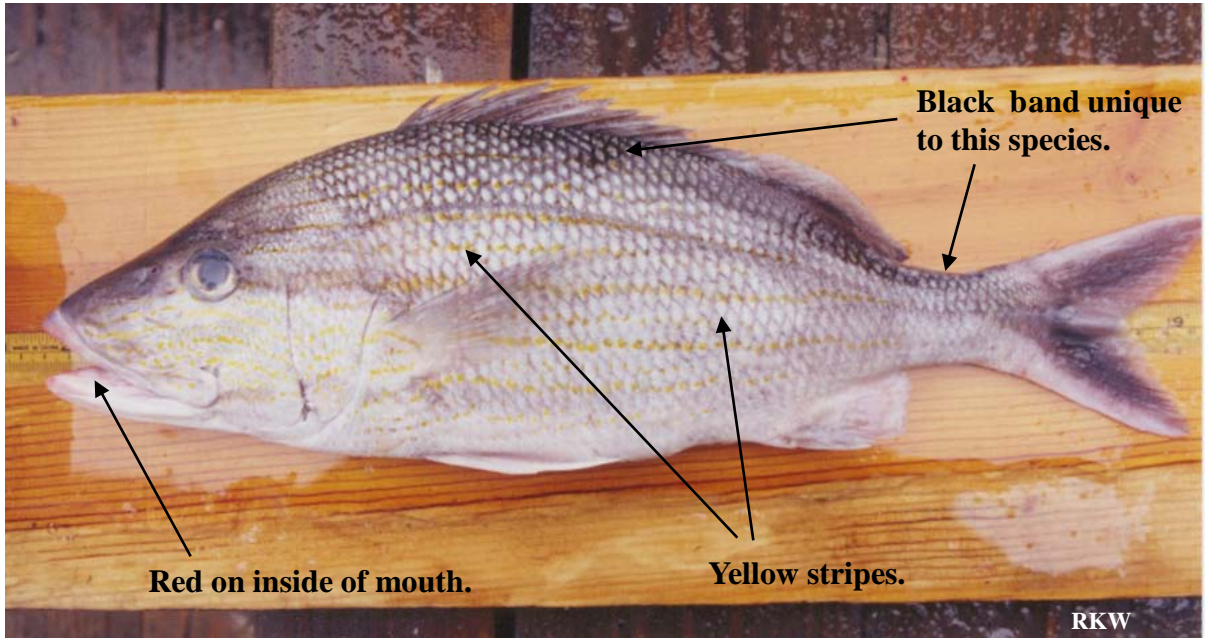
RKW

When compared to the white grunt, the bluestriped grunt has a more golden appearance.



RKW

Cottonwick
Haemulon melanurum

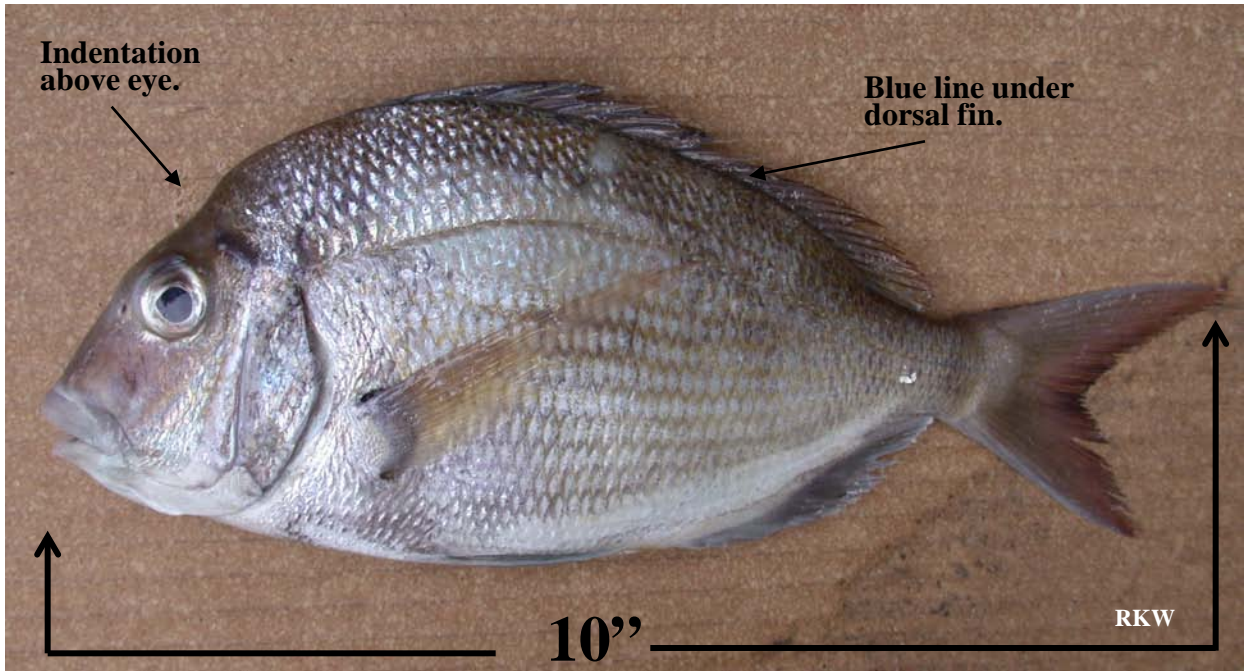


Margate
Haemulon album

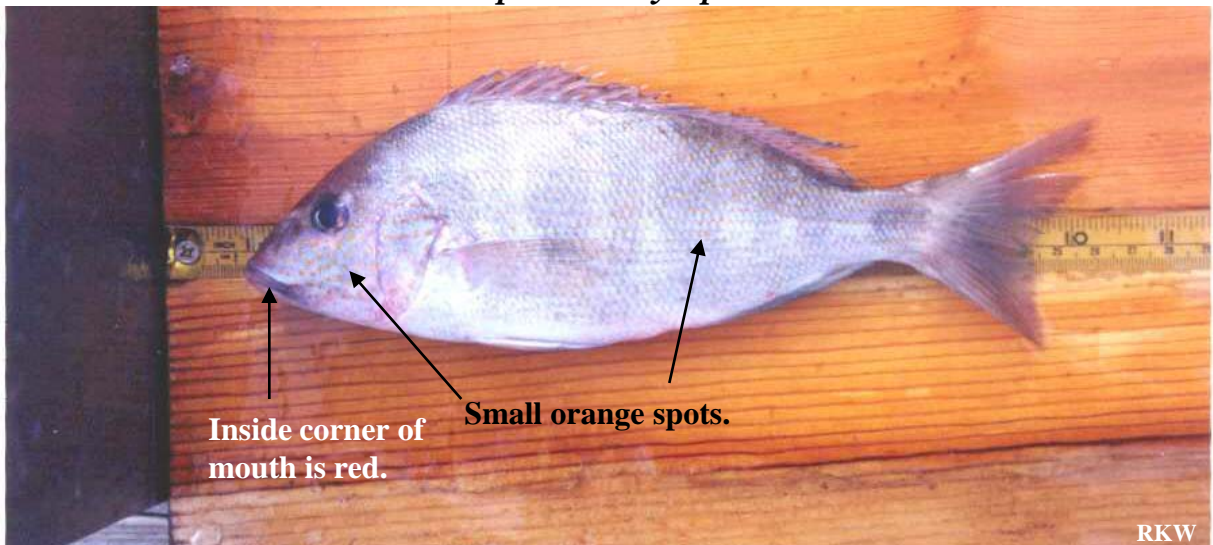


The Margate is the largest of the Western Atlantic grunts.

Scup
Stenotomus chrysops

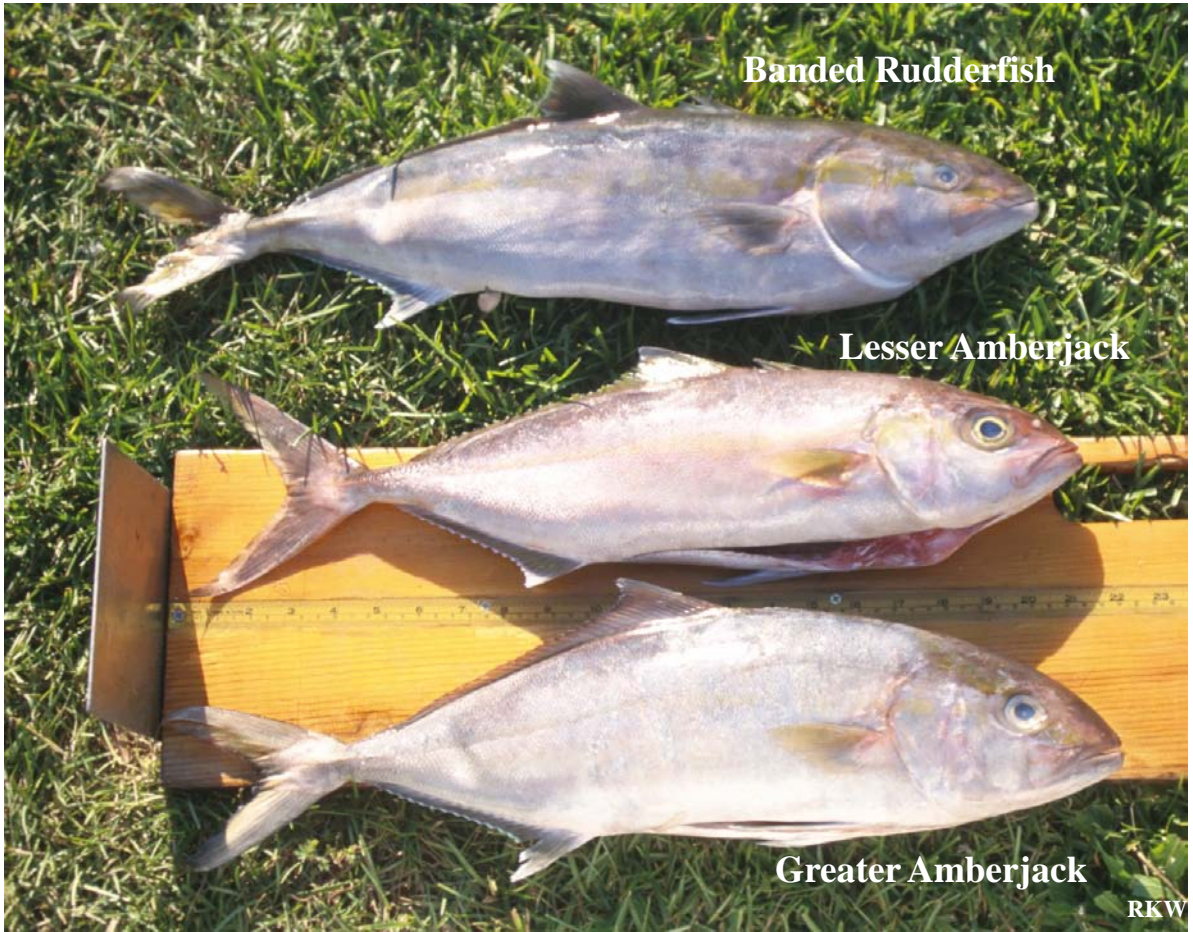


Pigfish
Orthopristis chrysoptera



The background of the image is a dense, repeating pattern of light blue water droplets of various sizes, creating a textured, fresh appearance. The droplets are scattered across the entire frame, with some appearing larger and more prominent than others.

Jacks



Banded Rudderfish

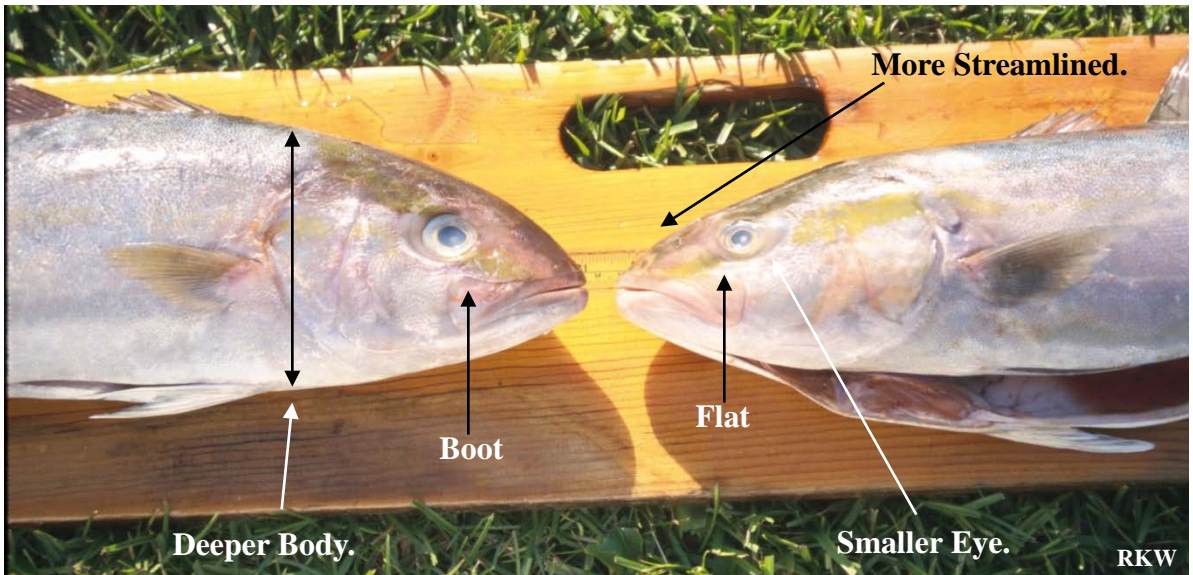
Lesser Amberjack

Greater Amberjack

RKW

Greater Amberjack
Seriola dumerili

Banded Rudderfish (Amberine)
Seriola zonata



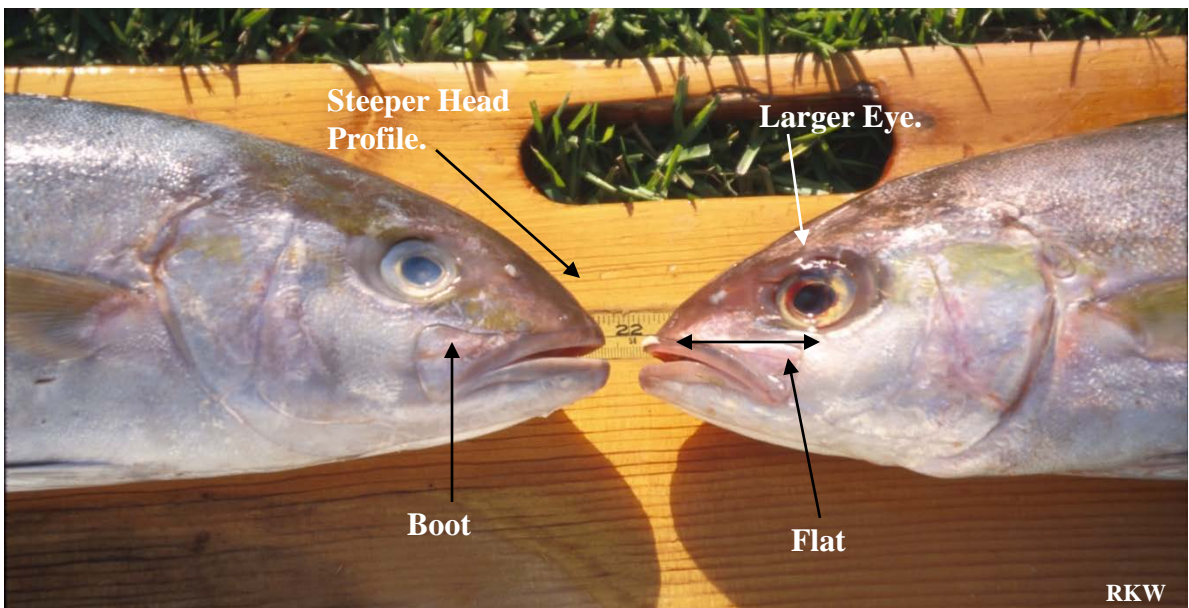
RKW

Juvenile Greater Amberjack



Juvenile Greater Amberjack

Lesser Amberjack *Seriola fasciata*

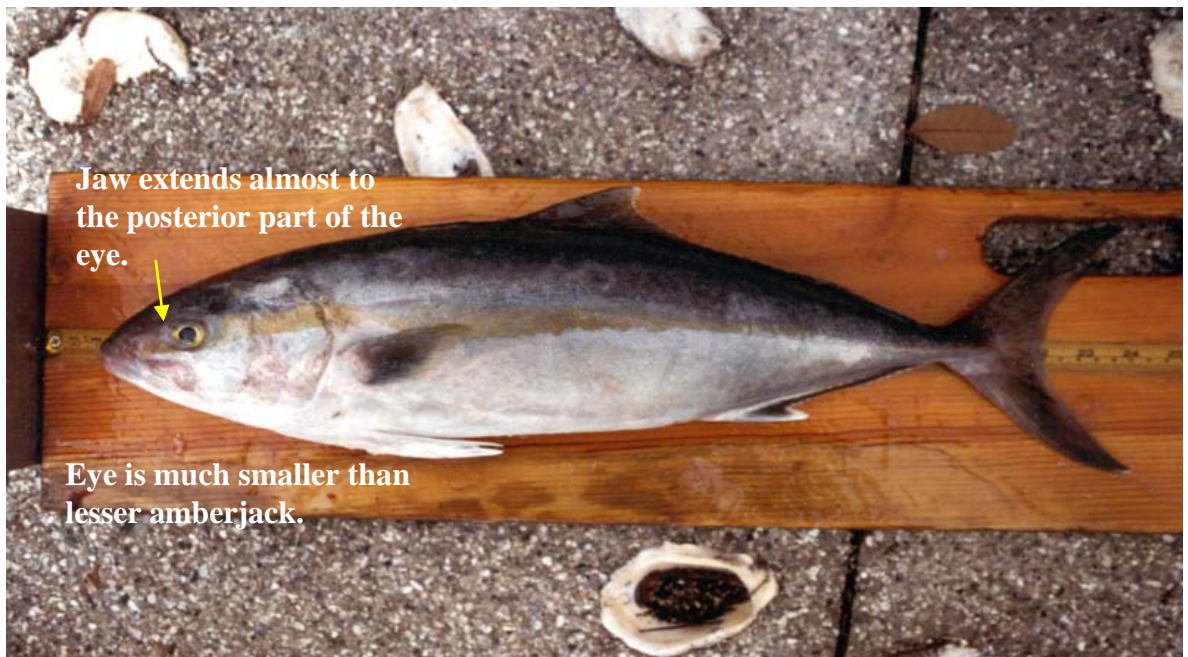


NOTE: Lesser Amberjack are typically caught in deeper water than the other jacks. Fishing vessels having snowy grouper or tilefish will often have lesser amberjacks not banded rudderfish.

Lesser Amberjack
Seriola fasciata

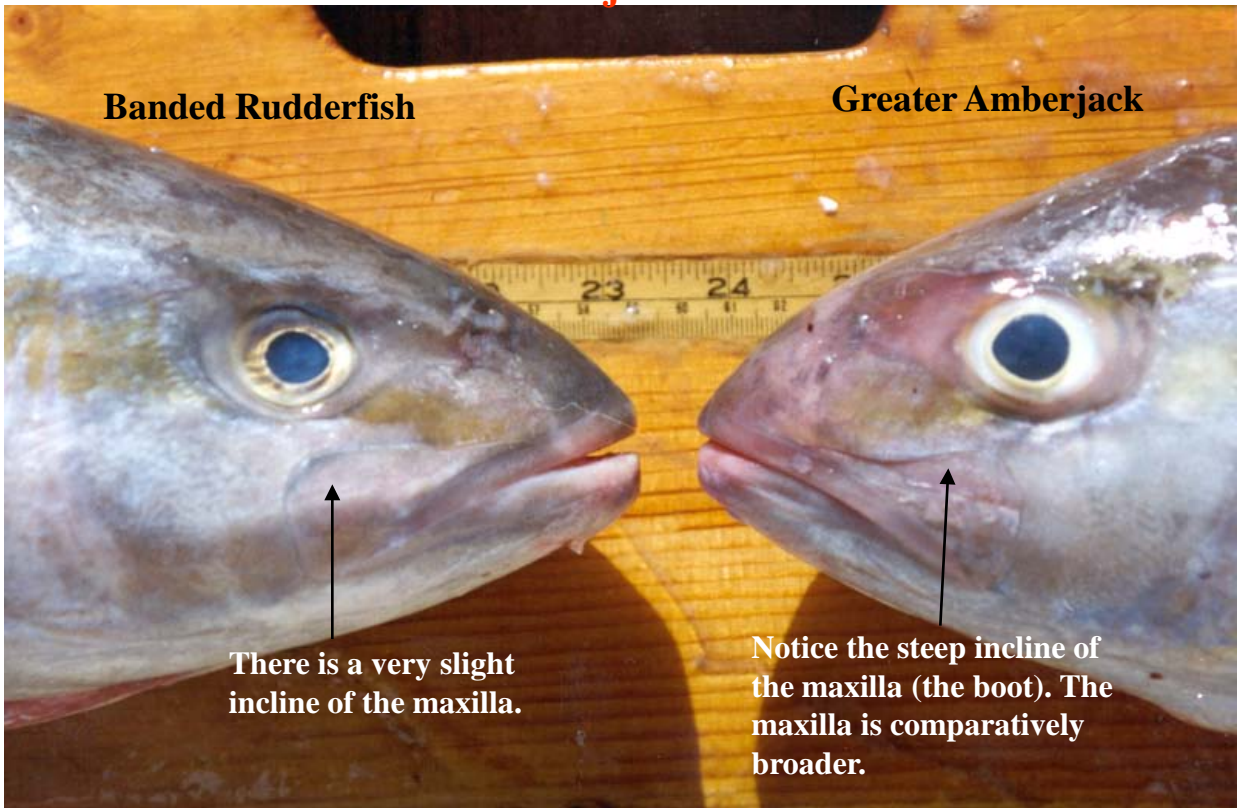


Banded Rudderfish (Amberine)
Seriola zonata



The "Boot"

The posterior part of the maxilla is much more broad on a greater amberjack.



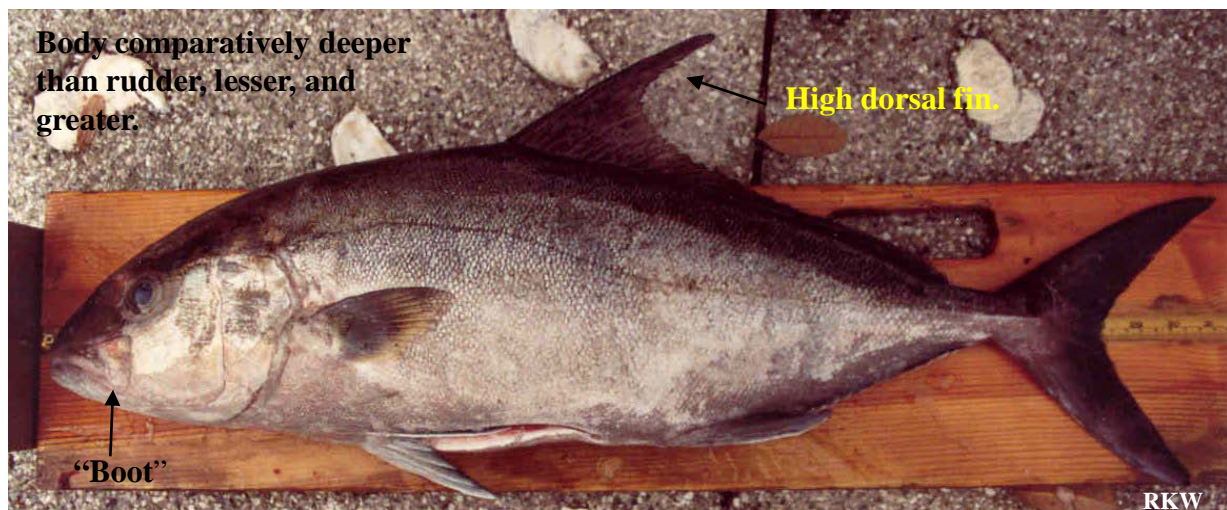
Black Jack
Caranx lugubris



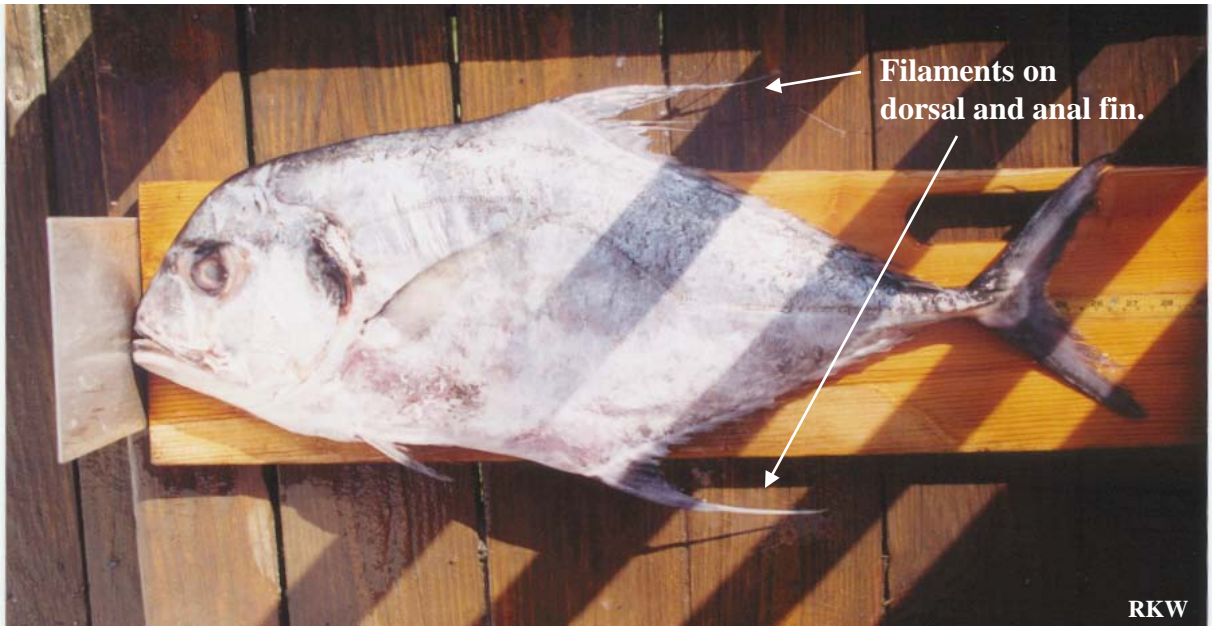
Yellow Jack
Caranx bartholomaei



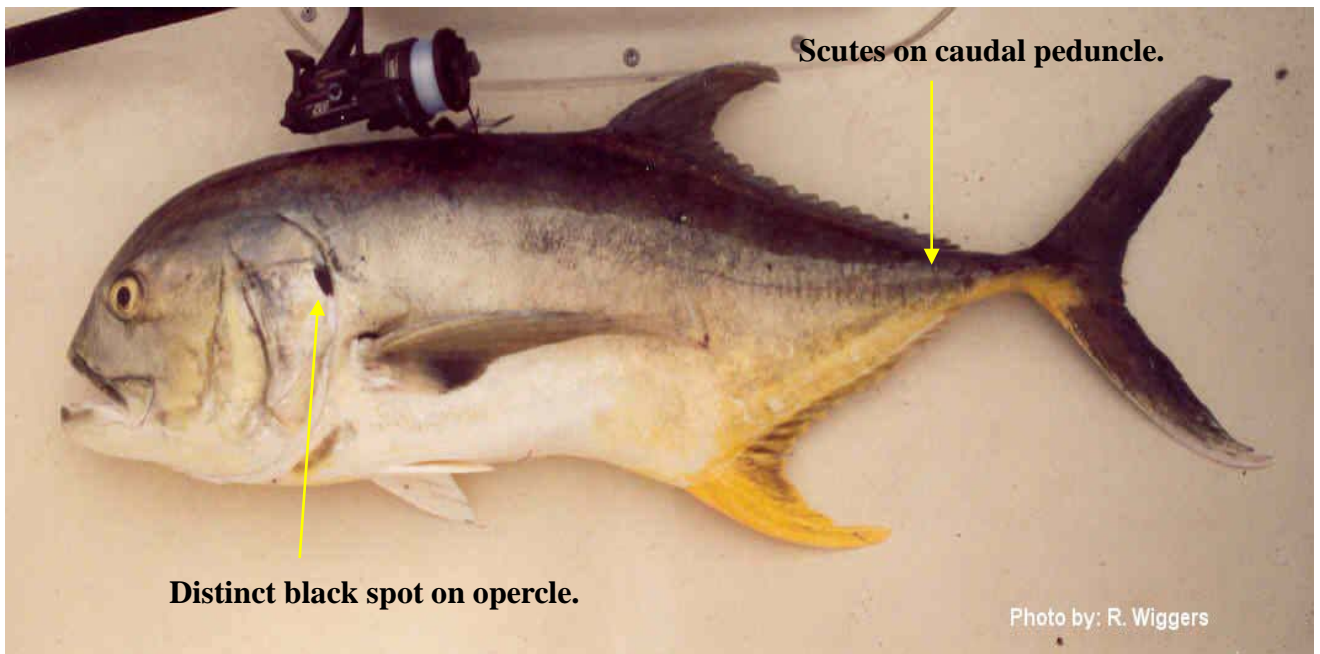
Almaco Jack
Seriola rivoliana



African Pompano
Alectis ciliaris



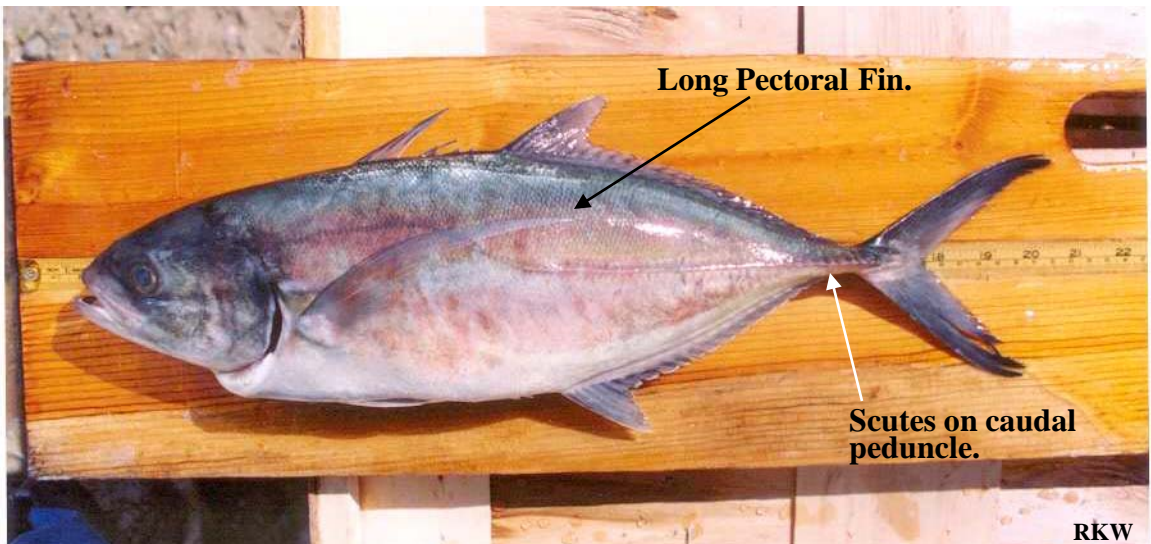
Crevalle Jack
Caranx hippos



Rainbow Runner
Elagatis bipinnulata



Blue Runner
Caranx crysos



Cottonmouth Jack

Uraspis secunda

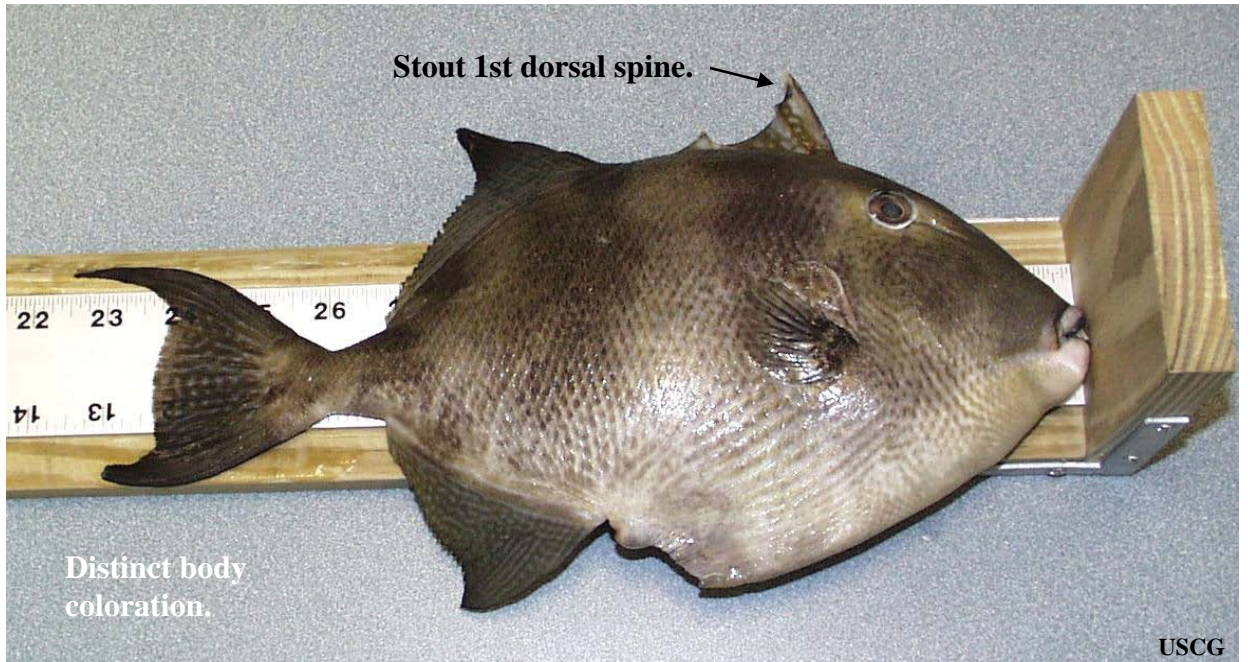


D. Player

Triggerfish

Filefish

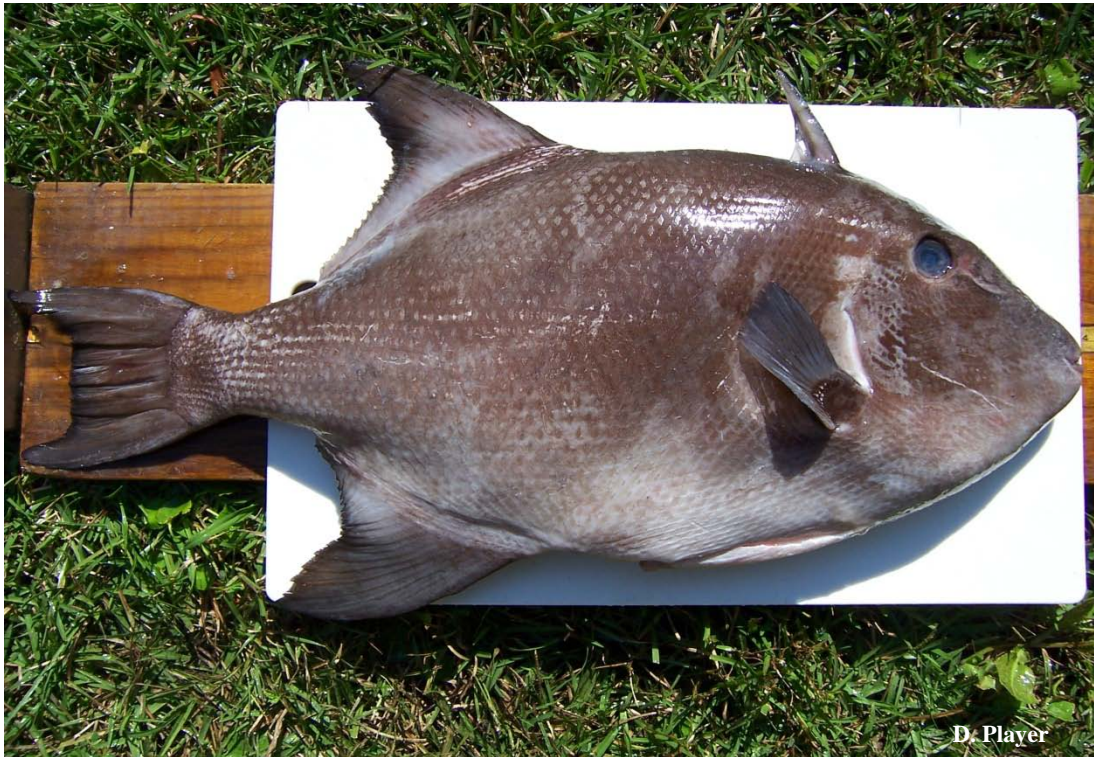
Gray Triggerfish (Leatherjacket)
Balistes capriscus



Queen Triggerfish
Balistes vetula



Ocean Triggerfish
Canthidermis sufflamen

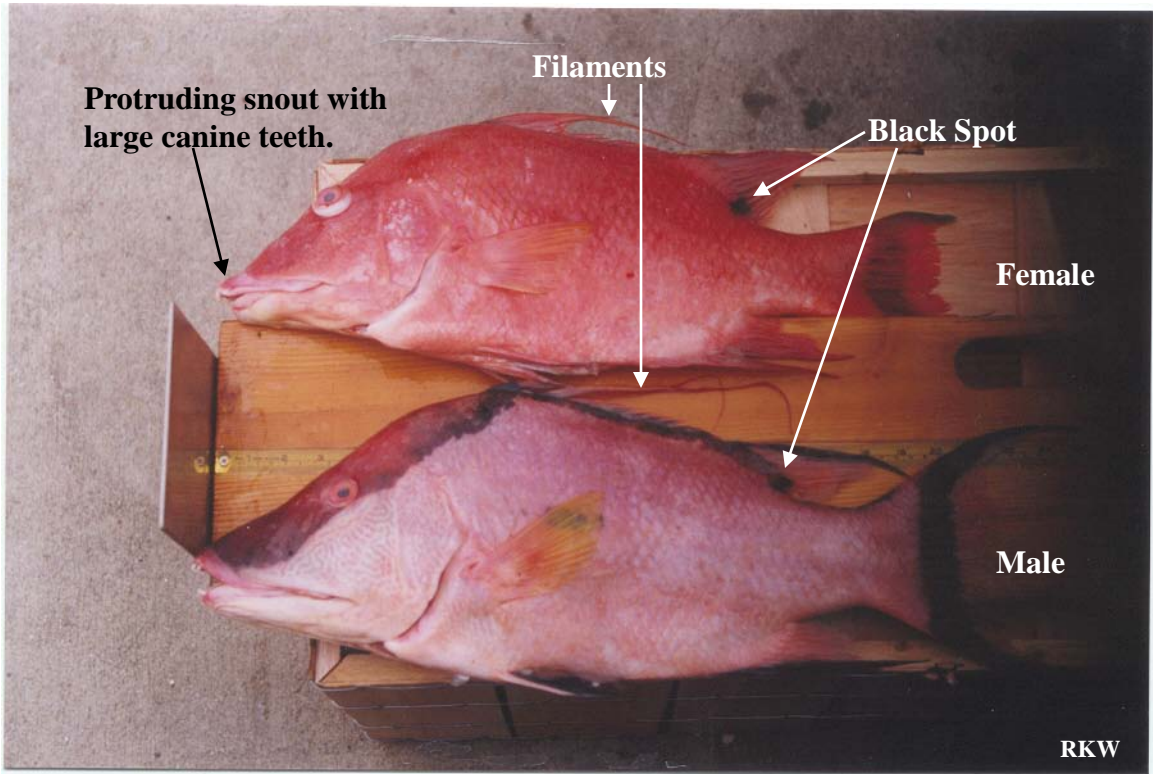


Unicorn Filefish
Aluterus monoceros

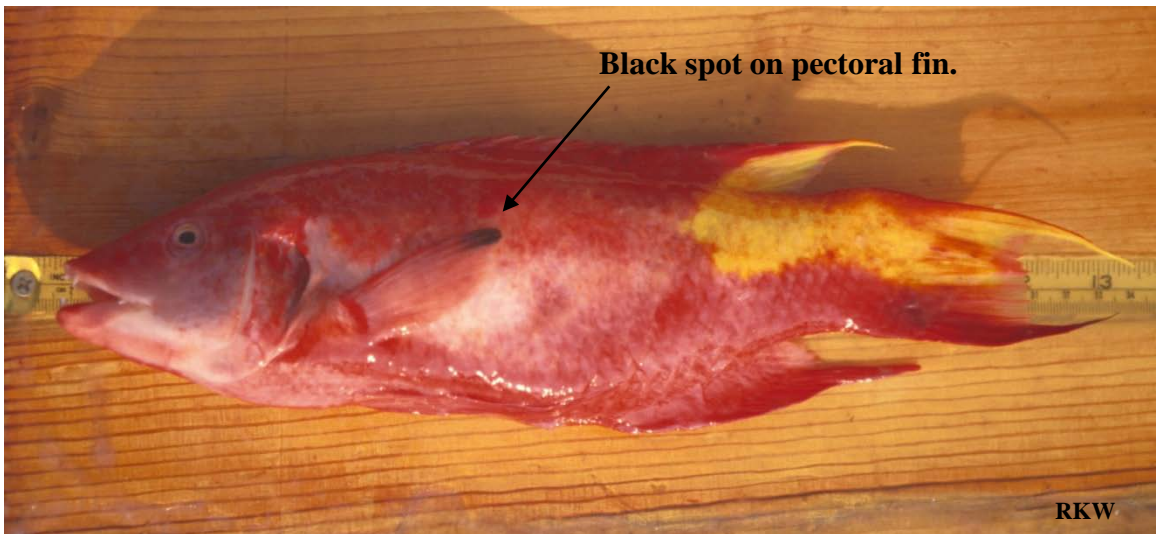


Wrasses

Hogfish (Hog Snapper)
Lachnolaimus maximus



Spotfin Hogfish
Bodianus pulchellus



Painted Wrasse
Halichoeres caudalis



RKW

Puddingwife
Halichoeres radiatus



RKW

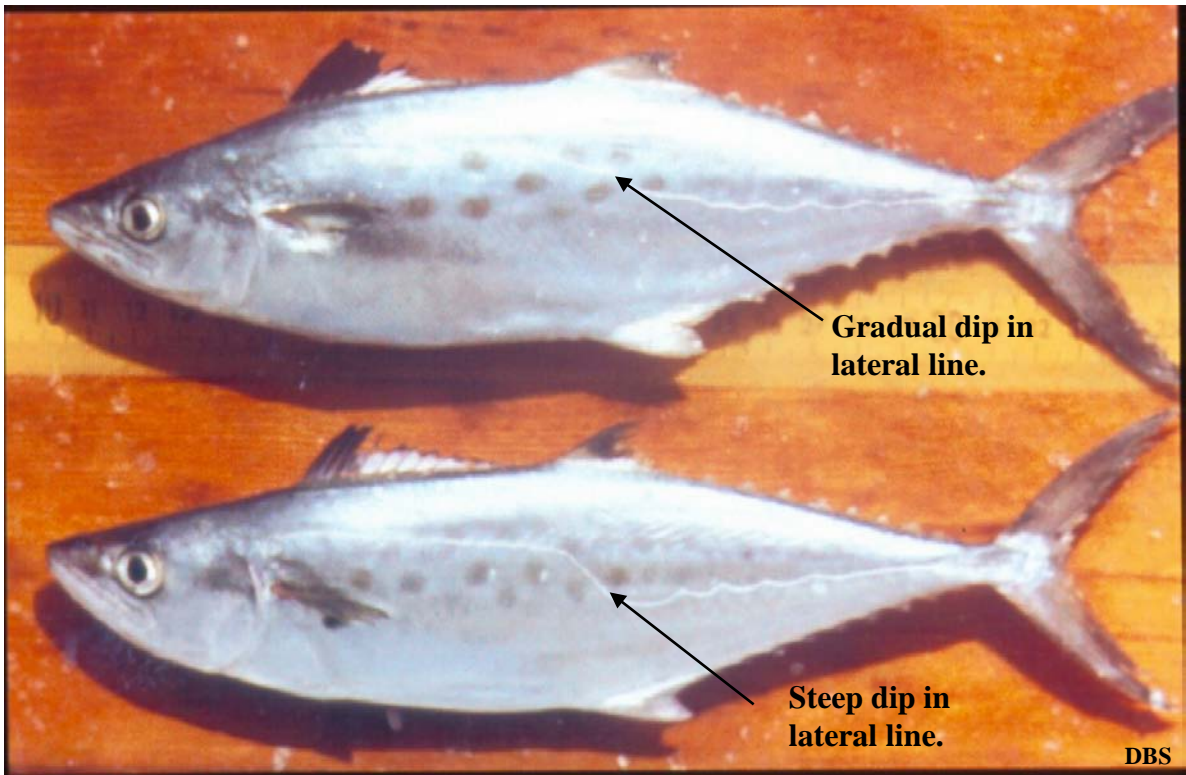
Tautog
Tautoga onitis





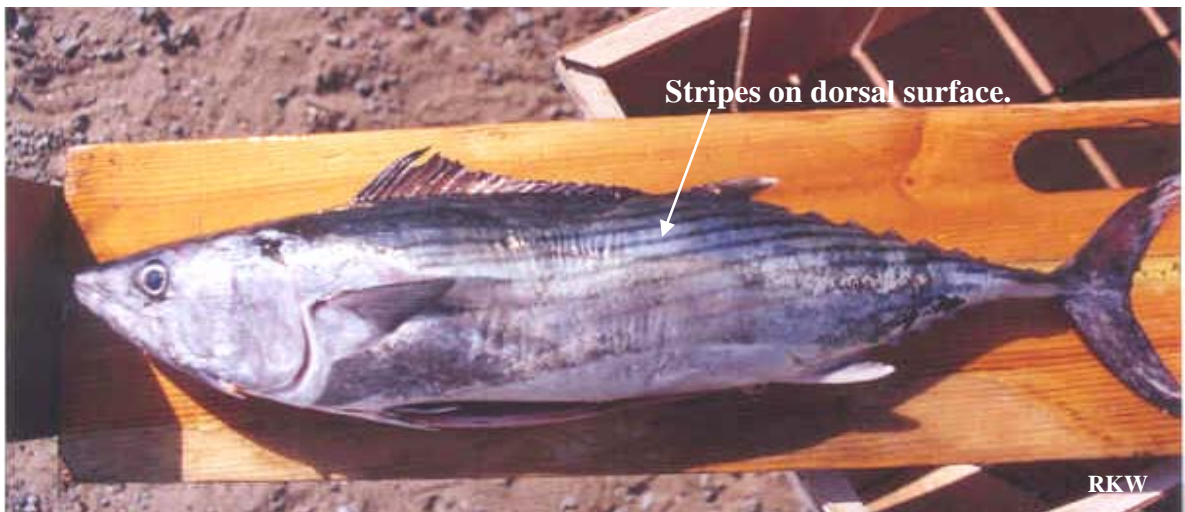
Mackerel

Spanish Mackerel
Scomberomorus maculatus



King Mackerel
Scomberomorus cavalla

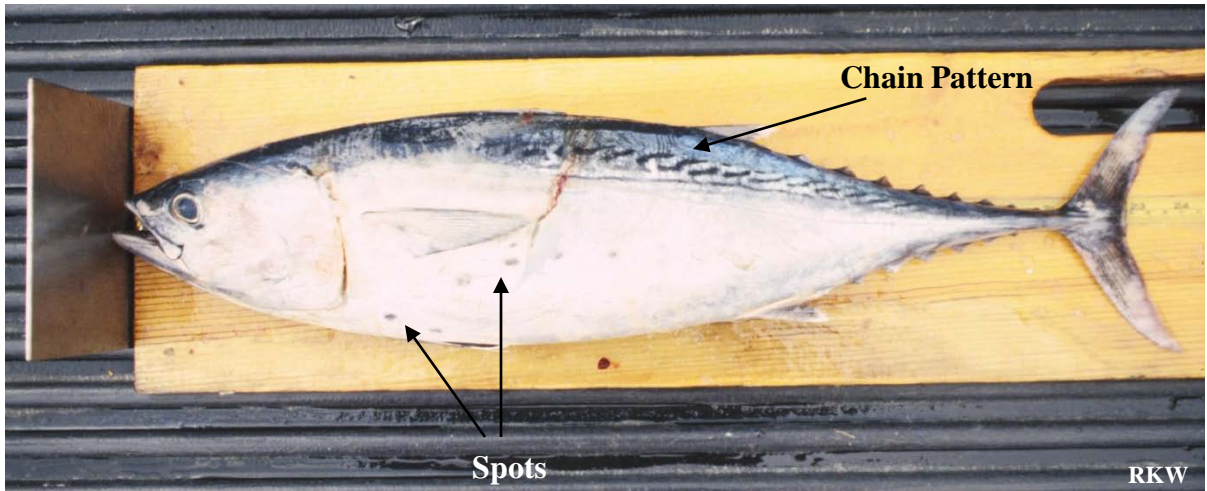
Atlantic Bonito
Sarda sarda





Tuna

Little Tunny (Bonita, False Albacore)
Euthynnus alletteratus



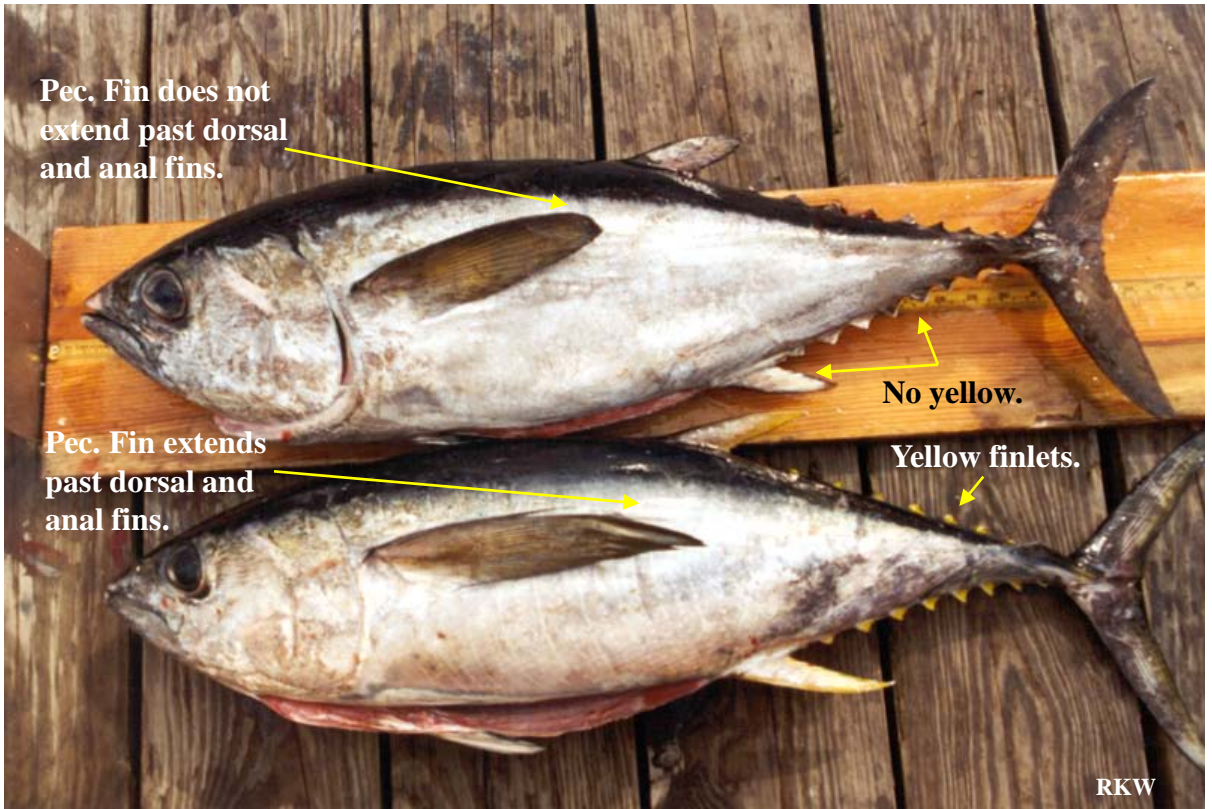
Skipjack Tuna
Katsuwonus pelamis



Albacore
Thunnus alalunga



Blackfin Tuna
Thunnus atlanticus



Yellowfin Tuna
Thunnus albacares

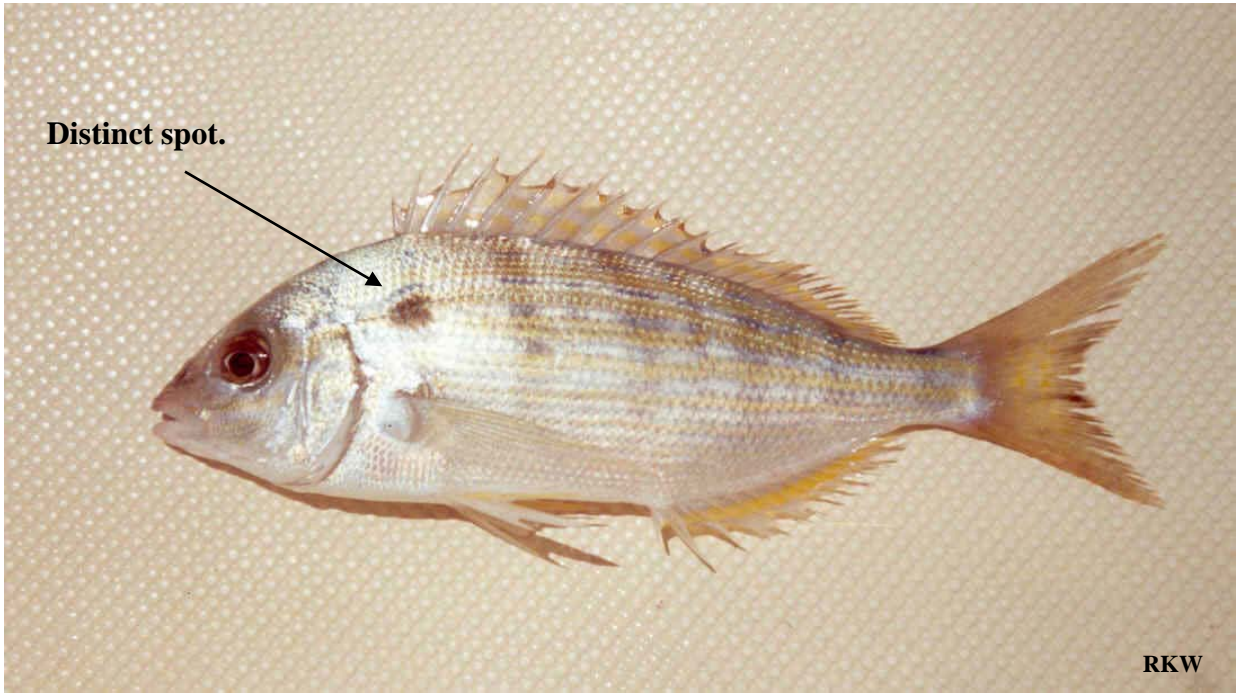
Juvenile Bluefin Tuna
Thunnus thynnus



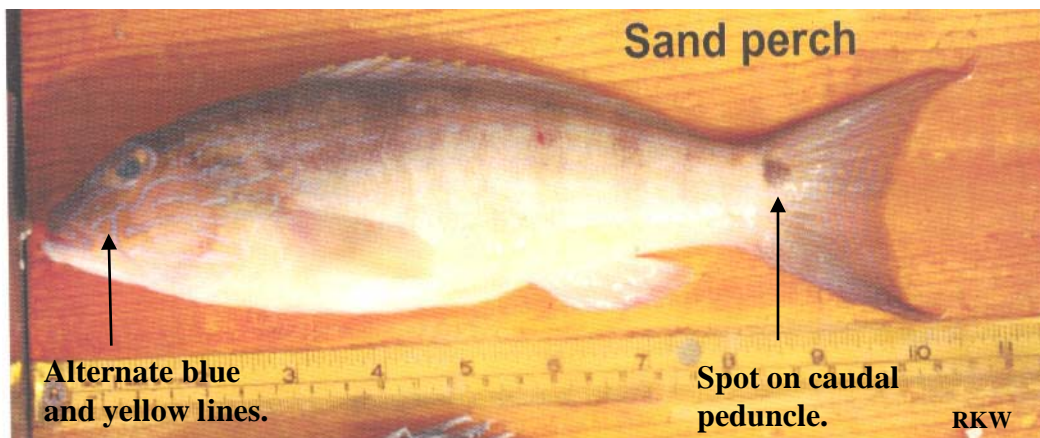


**Other
Offshore
Fishes**

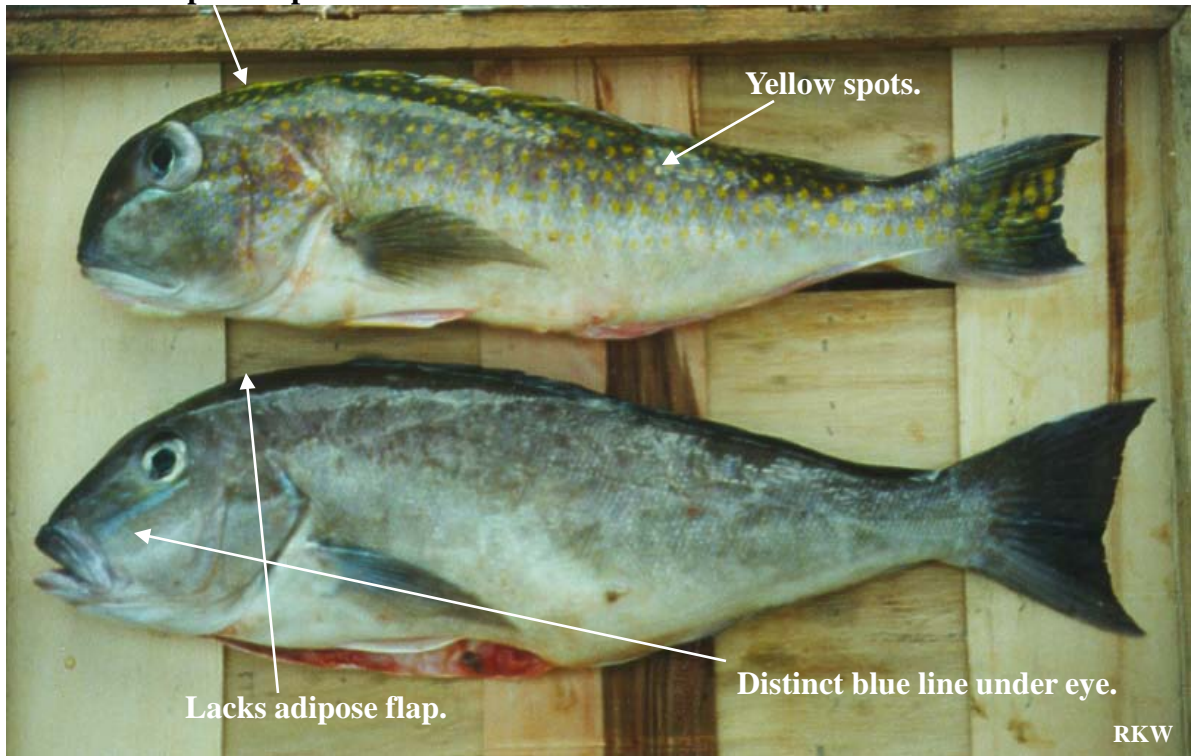
Pinfish (Sailors Choice)
Lagodon rhomboides



Sand Perch
Diplectrum formosum



Tilefish (Golden Tile)
Lopholatilus chamaeleonticeps



Blueline Tilefish (Grey Tile)
Caulolatilus microps



Sand Tilefish (Slippery Dick)
Malacanthus plumieri



Bearded Brotula
Brotula barbata



Southern Hake
Urophycis floridana



Scorpionfish (Sp. unknown)

Scorpaena sp.?



Blackbelly Rosefish

Helicolenus dactylopterus



Spinycheek Scorpionfish

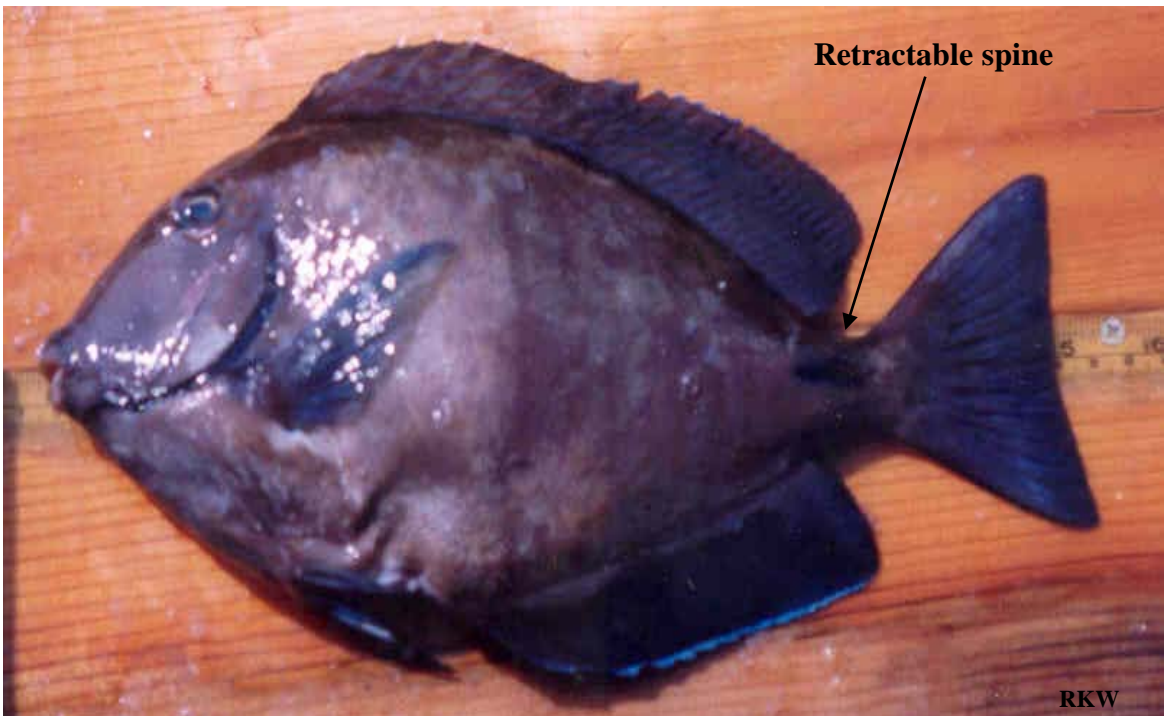
Neomerinthe hemingwayi



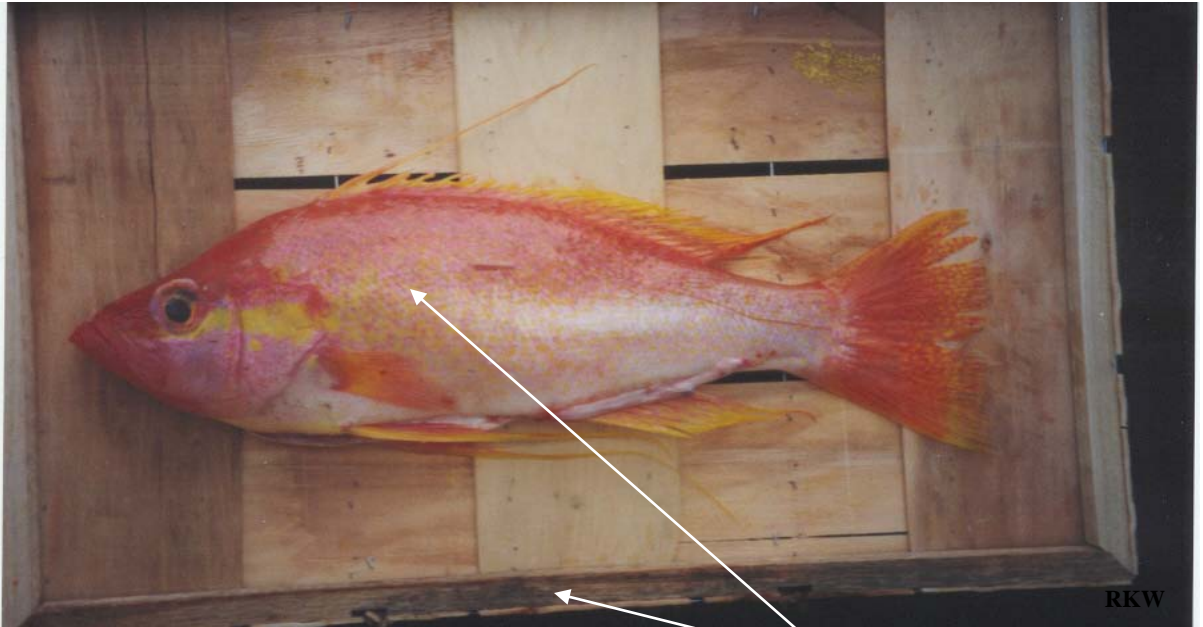
Bermuda Chub
Kyphosus sectatrix



Blue Tang
Acanthurus coeruleus



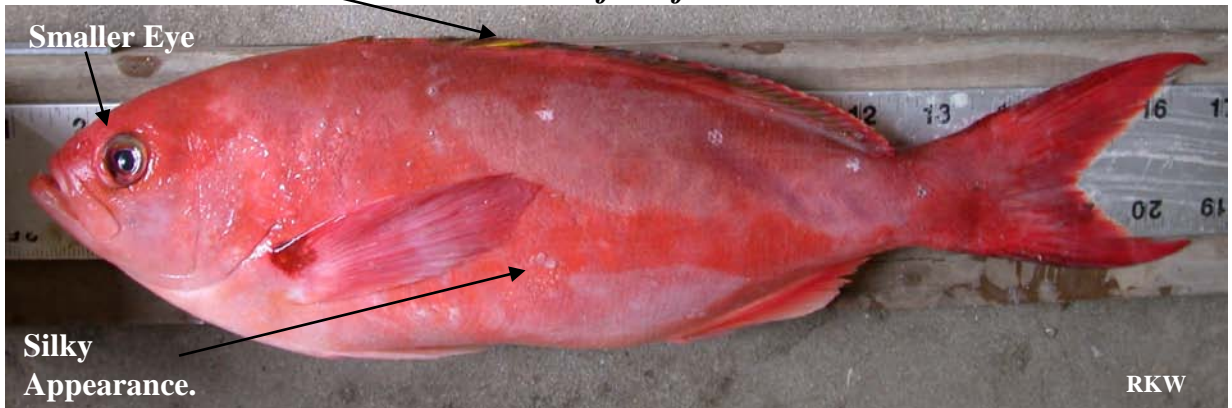
Longtail Bass
Hemanthias leptus



Creole Fish

Yellowish tinge on dorsal fin.

Paranthias furcifer



Spanish Flag

Gonioplectrus hispanus

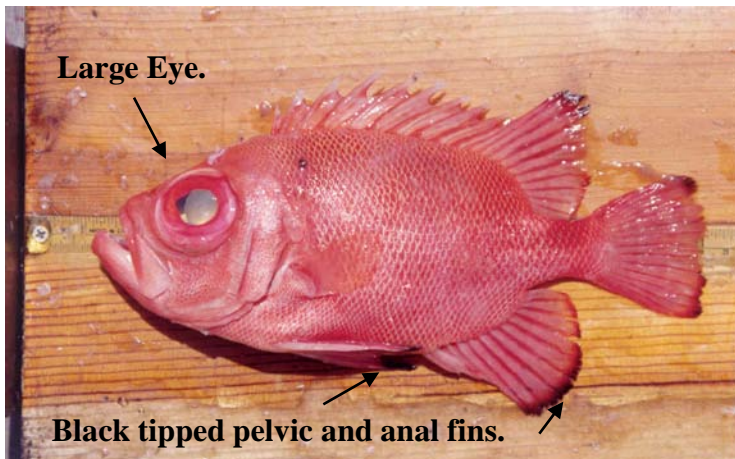


Soldierfish (Sp. Unknown)



Squirrelfish

Holocentrus adscensionis



Large Eye.

Black tipped pelvic and anal fins.

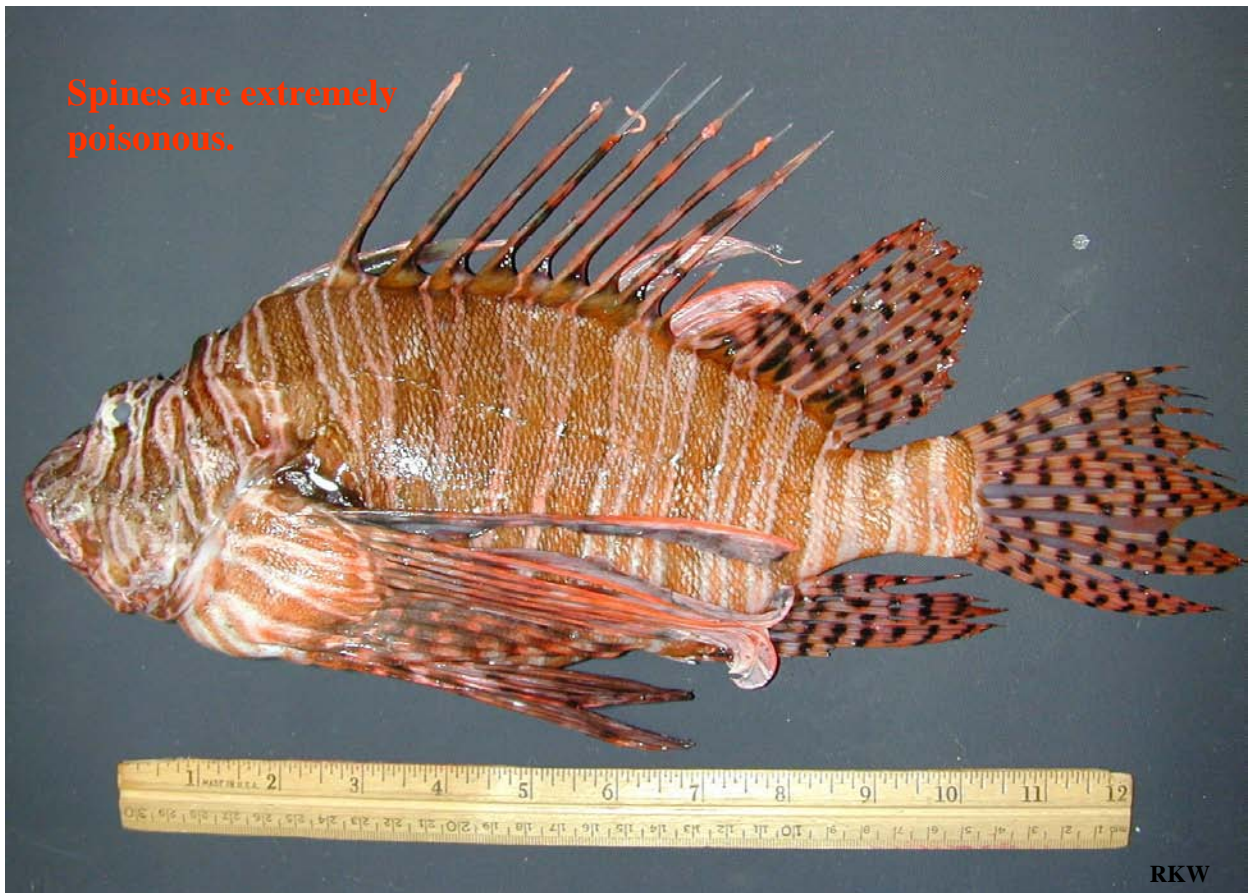
Bigeye (Toro)

Priacanthus arenatus

Cubbyu
Equetus umbrosus



Lionfish



Mutton Hamlet
Epinephelus afer

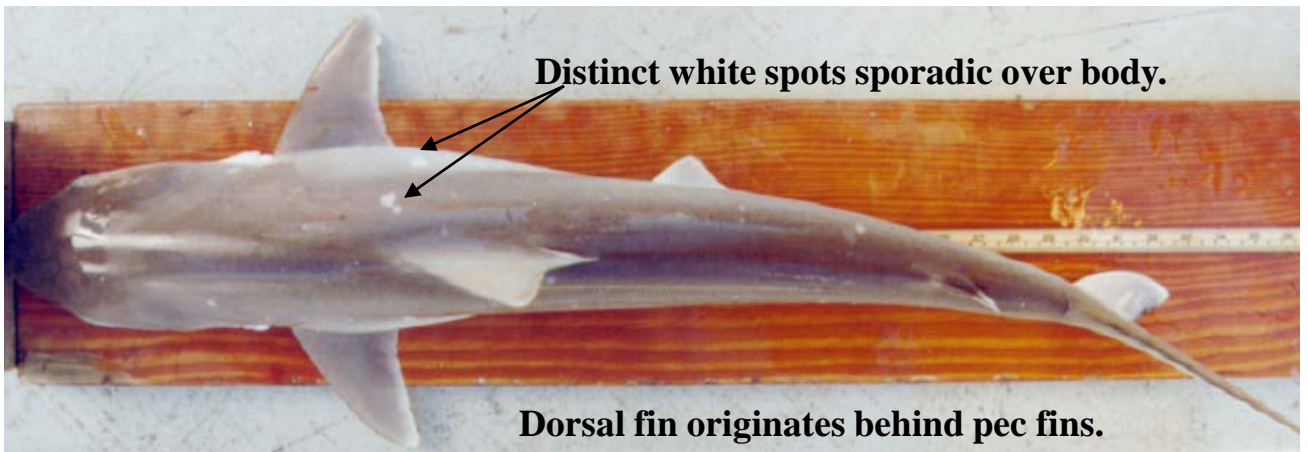




Sharks

Atlantic Sharpnose Shark (Small Coastal)

Rhizoprionodon terraenovae



2nd dorsal is black tipped.



No interdorsal ridge.

Bonnethead (Small Coastal)

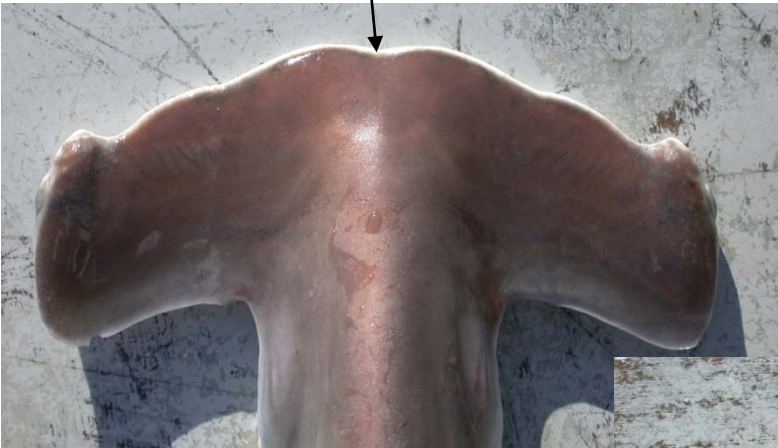
Sphyrna tiburo



Scalloped Hammerhead (Large coastal)

Sphyrna lewini

Indentation on central part of head



Lacks interdorsal ridge →



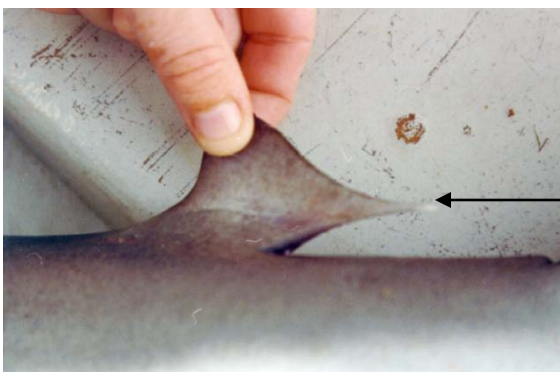
Sandbar Shark (Large Coastal)
Carcharhinus plumbeus



Interdorsal Ridge



Large dorsal fin originating over the midpoint of the pec fins.



Unlike the silky, short rear tip of 2nd dorsal fin.

Blacknose Shark (Small Coastal)

Carcharhinus acronotus



Dorsal originates behind pectoral fins. 2nd dorsal and anal fin have no markings.



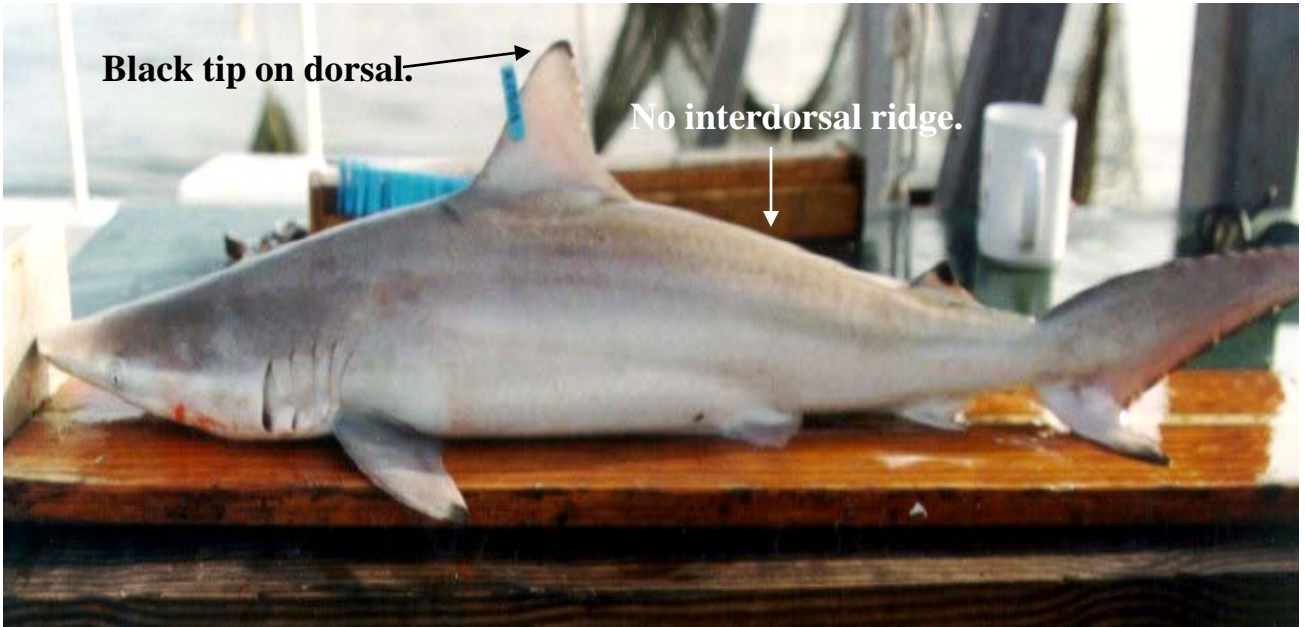
Lacks interdorsal ridge.



Dusky blotch at tip of snout more prominent in juveniles.

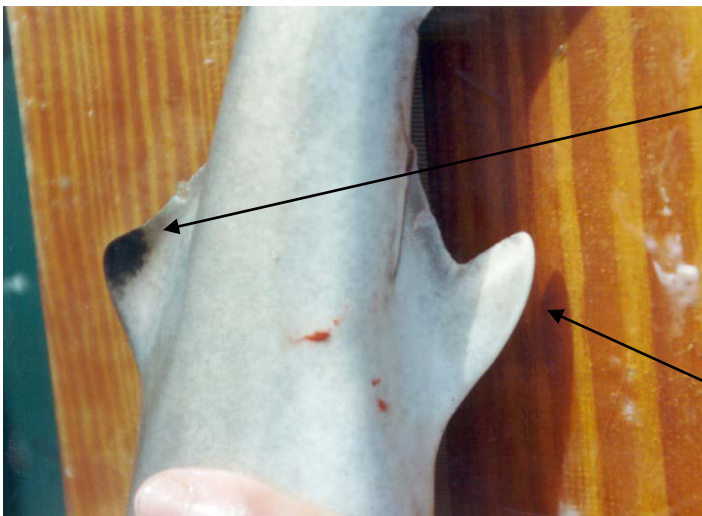
Blacktip Shark (Large Coastal)

Carcharhinus limbatus



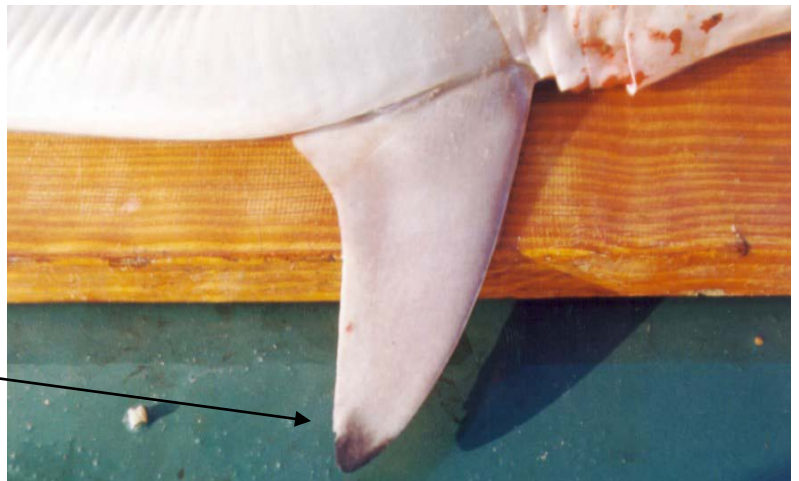
Black tip on dorsal.

No interdorsal ridge.



2nd dorsal is black tipped.

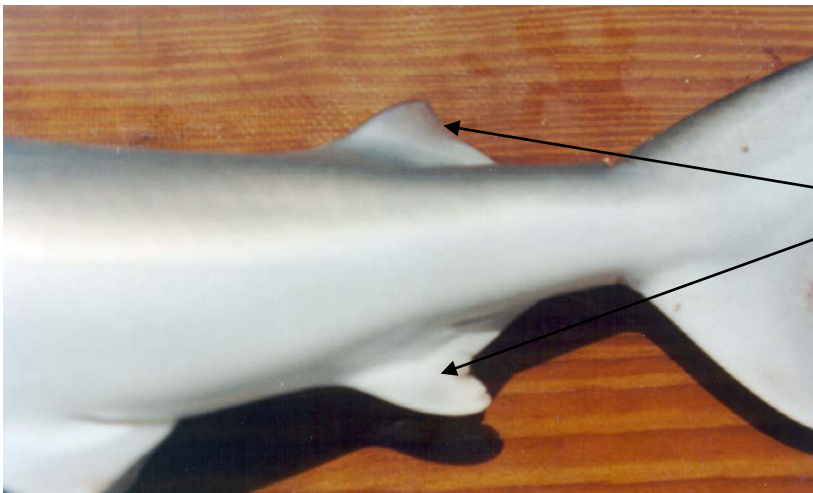
Anal fin is white.



Pectoral fin is black tipped.

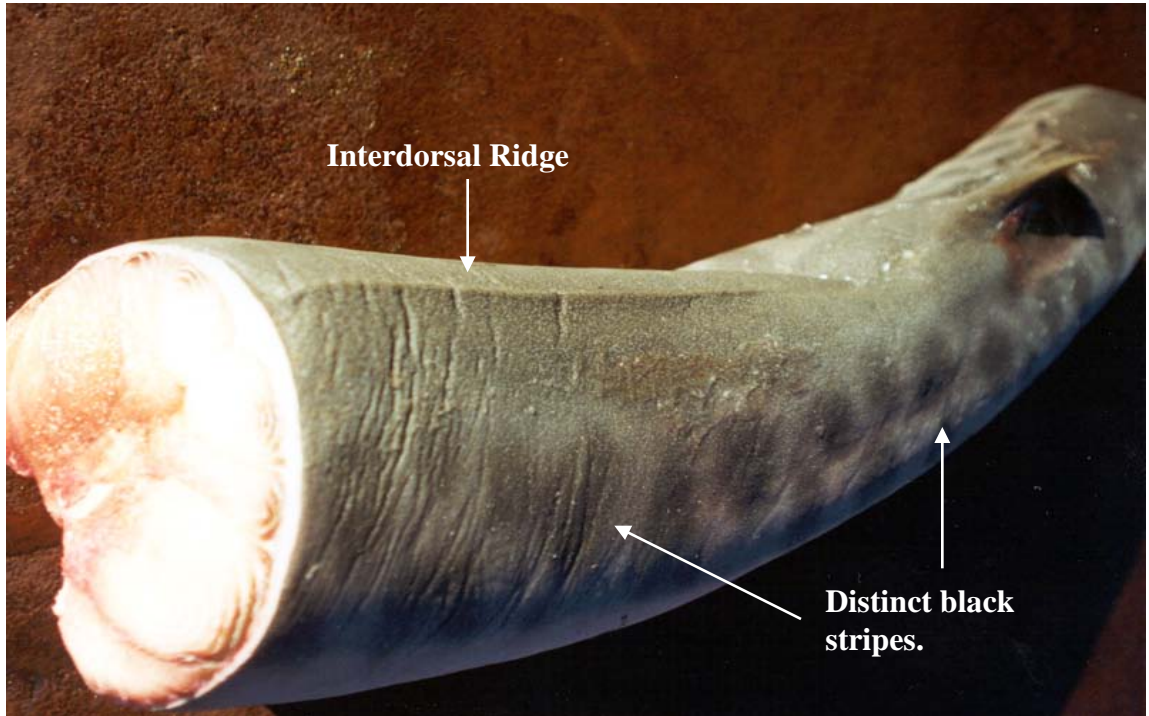
Finetooth Shark (Small Coastal)

Carcharhinus isodon



Tiger Shark (Large Coastal)

Galeocerdo cuvieri



Sand Tiger (Large Coastal)

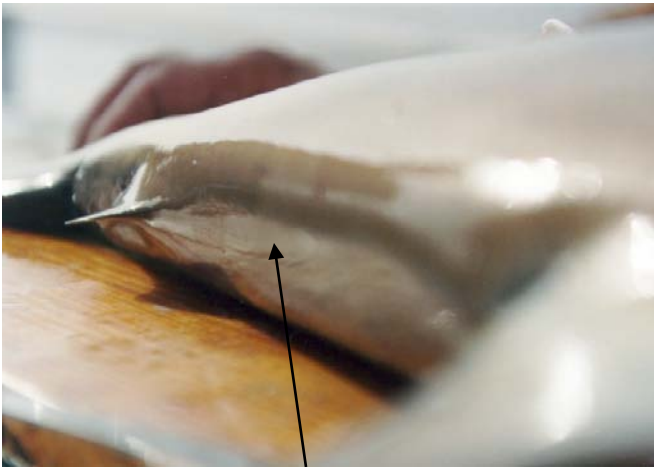
Odontaspis taurus

**View shows
underside of head.**



Spinner Shark (Large Coastal)

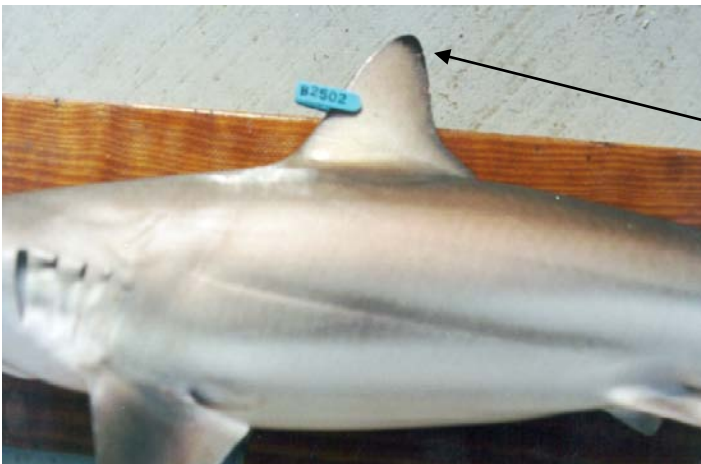
Carcharhinus brevipinna



No interdorsal ridge.

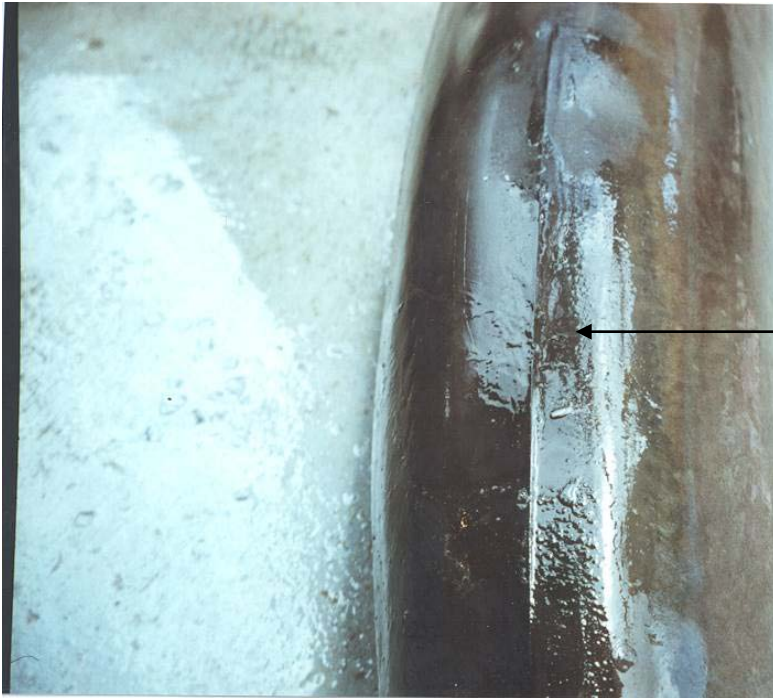


2nd dorsal and anal fin black tipped.

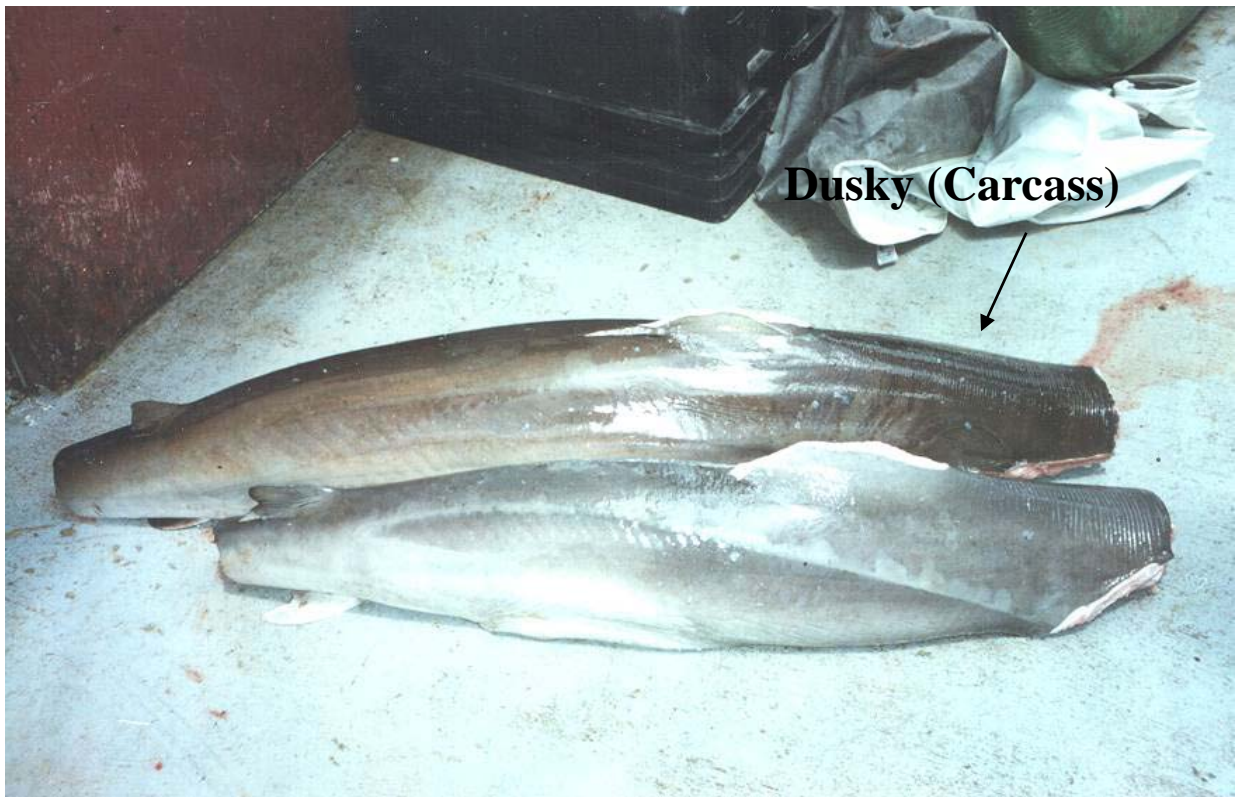


Dorsal fin is black tipped.

Dusky Shark (Large Coastal)
Carcharhinus obscurus

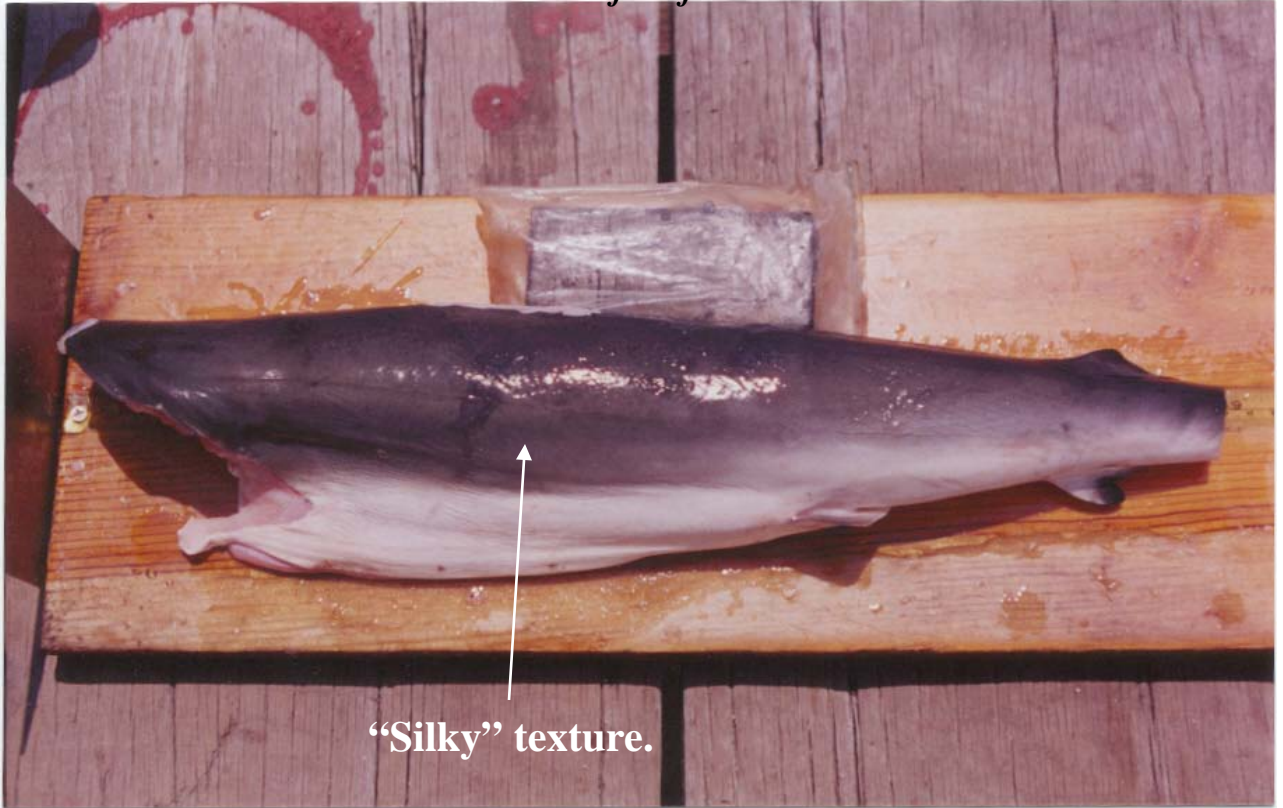


Interdorsal Ridge.

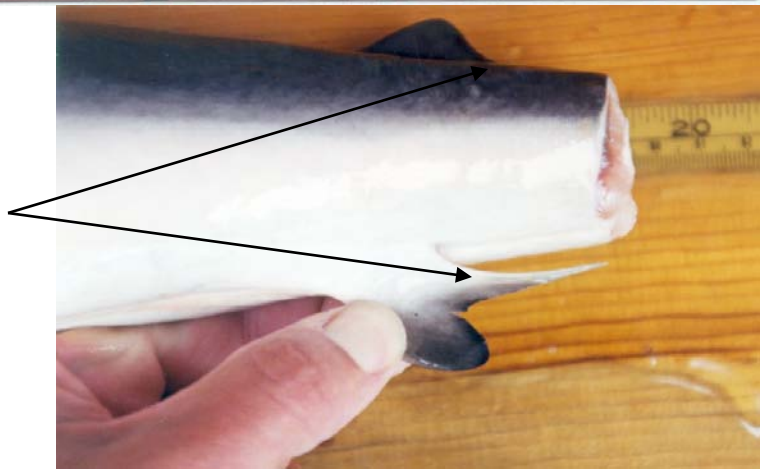


Dusky (Carcass)

Silky Shark (Large Coastal)
Carcharhinus falciformis



Long posterior tip on both 2nd dorsal and anal fin. Anal fin is black tipped.



Interdorsal ridge.