

2023-2024

SIERRA COUNTY VISITORS GUIDE



Discover California's Hidden Playground

**NEW! CHECK OUT
OUR INTERACTIVE MOBILE APP
TO PLAN YOUR VISIT!**

MAY 2023

May 5-6 – Sierra Timberfest Logging Show & Parade. Sierra Timberfest logging show is an American Lumberjack Association sanctioned event. Call: Wesley Palmer 530-209-8765 or Terry 530-993-0247 www.sierratimberfest.com

May 6 – Spring Craft Faire. Celebrate talented local artists at the Sierra Valley Grange in Vinton.

May 13 – Cancer Awareness Walk. Registration at 8:30am. Walks begin at 9am at Downieville School Gym. Lunch, raffle and educational information included. Contact Downieville School 289-3473

May 13 – Indian Taco Feed. Join us at the Sierra Valley Grange Hall for this fundraiser event.

May 20 – Downieville Clean Up Day. Gold Rush Park. 8am-Noon

May 20 – Kentucky Mine Clean-up Day. Kentucky Mine & Museum, 9am

May 26-27 – Downieville High School Drama, The Great Gatsby, Both performances each day at 6pm, Yuba Theatre, Downieville, Tickets \$10 available from Downieville High School, 289-3473

May 26-29 – All-Around Town Yard Sale. Sierra City. Contact the Chamber for more info.

JUNE 2023

June 3 - Lost & Found Gravel Festival. Portola. Live music, libations, dancing, food and some of the most beautiful gravel roads in the west. Choose between three epically grand routes: 35, 60 or 100 miles with elevation gains between 4,000 and 8,000 feet. www.lostandfoundbikeride.com

June 3 – Bouquets to Art Exhibition, Camptonville Community Center, Camptonville, 9am to Noon. Contact Sierra County Arts Council for further information, 289-9822, www.sierracountyartscouncil.org

June 9 - Loyalton High School Graduation. Loyalton.

June (TBD) - Downieville High School Graduation. Downieville.

June 10 – Recycled Relics Car Show, sponsored by: East Sierra Valley Chamber of Commerce, Downtown Loyalton, CA. \$25 entry fee. Vehicle entry, Terry 530-993-0247. Crafters/Vendor Info: Barbara 530-993-4387 or Kayte 530-251-3546. info@eastsierravalleychamber.com - www.eastsierravalleychamber.com

June 11 - Summerfest at the Mine. Kentucky Mine Historic Park & Museum. Noon to 4pm. Free to the public. Entertainment, mine tours, ice cream sundaes. Fun for the whole Family. For further information contact (530) 862-1310 or (530) 277-6408. www.sierracountyhistory.org or museum@sierracountyhistory.org.

June 17 - Movie Night at the Yuba Theatre: Back to the Future III. \$7 suggested donation.

7:00 pm. Downieville. Contact 289-9822 or www.sierracountyartscouncil.org for info

June 18 - Father's Day Fishing Derby. Downieville. A family day experience! Fish the Yuba and Downie Rivers! Registration starts at 7:30am at Sierra Hardware Store, Downieville. Open to kids ages 14 and younger. Bring your own gear. Fish must be measured and weighed by noon at Sierra Hardware Store. Prizes awarded at 1pm. First place - \$75; Second place - \$50; Third place - \$25; and lots of give-a-ways! Join the fun. Contact Mike Galan at 530-289-3595

June 24 - Music At The Mine. Kentucky Mine Amphitheater. Broken Compass with 86 Proof Trio. Gates open at 6pm. Show starts at 7pm. Contact Chris Stockdale for information (530) 277-6408.

JULY 2023

July 1 – Downieville Volunteer Fire Dept. Street Dance, Fireman's Muster & BBQ, Main St., Downieville, Starting at Noon.

July 4 - Downieville 4th of July Parade & Street Races, and Tug-of-War. Noon. Watch it coming and going up and down Main Street. All parade entries are welcome! Enter your kids, dogs, families, cars. It's exciting for all ages! Be creative. The ultimate small town parade ends with the infamous "Downieville Fireless Fireworks"! All ages welcome from one to one hundred. Pull up a curb and watch the fun. Family fun in a traditional small town celebration style. Contact Mindy Strine at (530) 955-5710 for info regarding festivities over the holiday weekend and parade entries.

July 4 - Loyalton 4th of July Parade and BBQ. The parade starts on Main Street in Downtown Loyalton at 9am. Contact Terry (530) 993-0247 to participate in the parade.

July 4 - Downieville Lions Club will have a hamburger/polish dog booth. 10am-2pm in the parking lot of Sierra Hardware, Main Street, Downieville. Come and enjoy the delicious food, and help the many community activities the Lions Club supports. For additional information, contact 289-3595.

July 4 - Country Market Bazaar Meet & Greet & July 4th Parade. Loyalton, CA. Hwy 49 & 2nd St. Crafter/Vendor at chamber kiosk. Info: 530-251-3546

July 4 - Free Community Concert in the Meadow. Sierra Pines Resort, Sierra City. 5-9 PM. Contact Sierra Pines Resort at (530) 862-1151 for more info.

July 8 - Music At The Mine. Kentucky Mine Amphitheater. Mumbo Gumbo. Gates open at 6pm. Show starts at 7pm. Contact Chris Stockdale for information (530) 277-6408

July 13-16 - Downieville Classic Bike Race. 25th Anniversary! Race or ride the epic 26.5 mile cross country to the Sierra Crest and back to town, or take in a double dose with 15 miles of the Downieville Downhill in the All Mountain World Championships. Or just come to enjoy the bike festival for the weekend. Either way, you win. www.downievilleclassic.com.

July 14 - Movie Night at the Yuba Theatre:

Shanghai Noon. \$7 suggested donation. 7:00 pm. Downieville. Contact 289-9822 or www.sierracountyartscouncil.org for info.

July 14-30 - California State Fair. Cal Expo Sacramento

July 15 - Forest City Quilt Show. Forest City Dance Hall. 10 AM - 5 PM.

July 21 - Movie Night at the Yuba Theatre: Silverado. \$7 suggested donation. 7:00 pm. Downieville. Contact 289-9822 or www.sierracountyartscouncil.org for info.

July 22 – Music at the Mine. Kentucky Mine Amphitheater. Boot Juice. Gates open at 6pm. Show starts at 7pm. Contact Chris Stockdale for information (530) 277-6408

July 22 – Downieville Mountain Brewfest. All along Main Street in Downieville. Some of the finest craft beers available in northern California and a variety of food vendors. 2pm-6pm. Check www.downievillebrewfest.com or the Facebook Event Page for Downieville Mountain Brewfest. For further information email to downievillebrew@gmail.com

Jul 27-30 - Plumas Sierra County Fair. Fun & games! A good old-fashioned county fair. Plumas Sierra County Fairgrounds. Quincy. 283-6272 for info

July 28-29 - Agony Ride. Sierra Valley. The Agony is a 24-hour bike-a-thon to raise funds for Christian Encounter Ranch. www.agonyride.org for more info.

AUGUST 2023

August 4 - Movie Night at the Yuba Theatre: The Good, The Bad, and The Ugly. \$7 suggested donation. 7:30 pm. Downieville. Contact 289-9822 or www.sierracountyartscouncil.org for info

August 6 – Country Crafts Bazaar, Meet & Greet: Hwy 49 & 89 Sierraville, CA. Crafter/Vendor Info: 530-251-3546

August 11 - Downieville Gold Rush Days. Downieville. Time TBD. An event that supports local gold prospectors and miners. All event profits donated to local non-profit organizations.

August 11 - Movie Night at the Yuba Theatre: Treasure of Sierra Madre. \$7 suggested donation. 7:30 pm. Downieville. Contact 289-9822 or www.sierracountyartscouncil.org for info.

August 12 – Music At The Mine. Kentucky Mine Amphitheater. Island of Black and White. Gates open at 6pm. Show starts at 7pm. Contact Chris Stockdale for information (530) 277-6408

August 18-20 - Downieville Epic – Trailwork, BBQ, camping, adventure. Contact 289-3010 for more information

August 19 - Movie Night at the Yuba Theatre: Grease Sing-A-Long. \$7 suggested donation. 7:30 pm. Downieville. Contact 289-9822 or www.sierracountyartscouncil.org for info.

August 25-27 - E.C.V. Convention & Annual Meeting. Downieville, Main Street. www.downie1849.com.

SEPTEMBER 2023

September 1 - Movie Night at the Yuba Theatre: True Grit. \$7 suggested donation. 7:30 pm. Downieville. Contact 289-9822 or www.sierracountyartscouncil.org for info.

September 3 – Home Grown Talent. Open Mic. Come share your talent on the stage of the Historic Yuba Theatre, Downieville, 7pm. Contact 289-9822 or www.sierracountyartscouncil.org for info.

September 3 – Country Crafts Bazaar, Meet & Greet: Hwy 49 & 89 Sierraville, CA. Crafter/Vendor Info: 530-251-3546

September 9 – Annual Calpine Marketplace. 10am to 4pm. Calpine Community Park, 131 County Road, Calpine. Professional vendors, classic car & truck show, BBQ, all day raffle, bake sale, kids' corner with prizes, dunk tank & live music. 530-616-0630

September 15 – Big City Rod Run Meet and Greet Community Event. Sierra City Park across from the Country Store. 4pm to 8pm. For more info: 530-862-1170 or jim@buttesresort.com

September 16 – Big City Rod Run Car Show. Main St/Hwy 49 Downtown Sierra City. 10am to 4pm: \$30 entry fee. For more info: 530-862-1170 or jim@buttesresort.com

September 23 – Sierra Valley Art & Ag Trail. 10am to 4pm. Contact Sierra County Arts Council at 289-9822 or info@sierracountyartscouncil.org. Final details should be available at www.sierravalleyartagtrail.org as the date of the event comes closer.

September 24 - Sierra County Historical Society Annual Meeting & Picnic. Kentucky Mine, Sierra City. Time TBD. 862-1310 for info.

September 30 - Wine in the Woods. Sorroco's, Sierra City. 3-6 PM. Contact Cindy Haubl at 862-1151 for more information.

OCTOBER 2023

October 1– Country Crafts Bazaar, Meet & Greet: Hwy 49 & 89 Sierraville, CA. Crafter/Vendor Info: 530-251-3546

October 7 - Swinging for the Schools Golf Tourney. Plumas Pines Golf Resort, Graeagle. Starts at 10:30 AM. Contact www.SierraSchoolsFoundation.org

October 7 - Sierra City Oktoberfest Street Faire: Main St/Hwy 49 Downtown Sierra City. Crafter/Vendor Info: For more info: 530-862-1170 or jim@buttesresort.com

October 14 & 15 - A Walk in the Woods - Exhibition and Art Show. North Yuba Hall, Downieville. Contact www.sierracountyartscouncil.org for info.

October 15 - Forest City Annual Applefest and General Meeting. 12 PM - 4 PM meeting. Call Cheryl Durrett at 287-3133 for more info.

October 20 & 21 – Sierra Turnpike Players Production. A play featuring local talent. Fun for everyone! Yuba Theatre. Downieville. 7:00 pm. 289-9822 or www.sierracountyartscouncil.org for info.

October 27 – Downieville School Halloween Carnival. Downieville School, Downieville. 6pm.

October 27 & 28 – Downieville Halloween History Tour. Tin Cup Diggins / Yuba Theater. Downieville. 6pm. Contact Sierra County Chamber of Commerce info@sierracountychamber.com for additional information.

October 29 - Halloween Harvest Festival & Pumpkin Carving Meet & Greet. 9 till? Hwy 49 & 2nd St. Downtown Loyalton, CA. Costume contest, kids of all ages welcome Call: Bonnie Jessee 530-412-3984 or Kayte 530-251-3546

NOVEMBER 2023

November 4 - Sierra County Arts Council Board Meeting. 11 AM. The Yuba Theater, Downieville & on Zoom.

November 11 - Veterans Day Ceremony. Gathering at Noon with lunch afterwards. Bell Tower. Downieville.

November 11 - Mountain Harvest Fair. Sierra City Community Hall. Contact the chamber for more info & check for details online as event nears.

November 12 - Craft and Home Faire. Sierra Valley Grange Hall, Vinton. 9am. Check the Sierra Valley Grange Hall website at www.sierravalleygrange.org for additional information.

November 18 - Friendsgiving. Sierra City, Community Hall. 5:00 PM. Contact Rebecca Mooers at (530) 277-6885 for more information.

November 23 - Miss Jody's Thanksgiving Dinner. A holiday dining event at the Downieville Community Hall for all locals, visitors and families. Sponsored by the Downieville Lions Club, the United Methodist and the Assembly of God Churches. All donations and contributions benefit the Western Sierra Food Bank. Dinner served from 1pm-4pm. Donations of turkeys, hams, desserts and money are needed and can be given or ordered at the Downieville Grocery Store and the Sierra City Country Store. Volunteers are needed to help set up, cook turkeys, desserts and all the trimmings and serve on Thanksgiving Day. Contact Suzanne Smith 530-289-3213

November 23 - Turkey Trot. Loyalton City Park. 1 or 2 mile fun run/walk. 9am. Contact Amy Filippini, 993-4182

DECEMBER 2023

December 1 - Downieville Tree Lighting. Downieville Park. Time TBD.

December 2 - Downieville School Holiday Show & Baked Goods Auction. 5pm. Yuba Theater. Downieville. 289-3473

December 2 - Holiday on Main Street Craft Show. Come celebrate holiday magic in Downieville. 10am-2pm. Take a free ride with Santa Claus in a historic fire engine. Free stockings for the little ones. Listen to Christmas music as you shop the vendors in the warmth of the Downieville Community Hall. Enjoy good food, unique shops and the enchanting historic Main Street decorated with holiday lights. Sponsored by the Downieville Fire Auxiliary.

December 16 - Kids Holiday Party. Community Hall, Sierra City. Time TBD. Contact Rebecca Mooers at (530) 277-6885 for more information.

JANUARY 2024

January 20 - Annual Sierra City Crab Feed. Sierra City Community Hall. 5:00 PM.

FEBRUARY 2024

Check the Sierra County Chamber of Commerce website: www.sierracountychamber.com for events happening this month.

MARCH 2024

March 2 - The Great Yuba Pass Chili Cook Off. At the Yuba Pass Snow Park. Rain, Snow or Shine. Contact 289-3262 for information

March 16 - Corned Beef & Cabbage Dinner. 6pm. Sierra City Community Hall. www.sierracountychamber.com or contact Chris and Karen Campbell at 862-1632 for additional information

March 30 - Downieville Annual Easter Egg Hunt. School Yard, Downieville. 12:00 PM.

APRIL 2024

First Weekend in April - Banff Mountain Film Festival World Tour. Yuba Theater. Enjoy thrilling mountain adventure and world culture from across the globe in the Historic Yuba Theatre. Downieville. 289-9822 or www.sierracountyartscouncil.org for info

MAY 2024

May 11 - Cancer Awareness Walk. Registration at 8:30am. Walks begin at 9am at Downieville School Gym. Lunch, raffle and educational information included. Contact Downieville School 289-3473

May 18 – Kentucky Mine Pre-Season Clean-Up Day. Kentucky Mine & Museum, Sierra City. Starts at 9am.

May 24-25 – Downieville High School Drama Performance. Both performances each day at 6pm, Yuba Theatre, Downieville, Tickets \$10 available from Downieville High School, 289-3473

May 25-27 – All-Around Town Yard Sale. Sierra City. Contact the Chamber for more info.

COVER PICTURE CREDITS - THANK YOU CONTRIBUTORS

FROM TOP LEFT TO BOTTOM RIGHT: Mary Davey 'Sulpher Butterfly' • Mel Montanez 'Fly Fishing' • Joey Galloway 'Lake Sardine Panorama' • Unknown 'Sierra City Big Springs' • Unknown 'The Yuba Theatre' • Mary Davey 'Lakes Basin Reflection' • Darby Hayes 'Sierra Buttes from Sierra City' • Joey Galloway 'Packer Sunset' • Cindy Haubl 'Mountain Biker' • Mary Davey 'River Fall' • Mary Davey 'Kayaker Loves Falls'

CONTENTS

Calendar of Events.....	Inside cover & Page 1
Welcome to Sierra County.....	2
49 Things to do in Sierra County.....	3
Sierra County Est. 1852.....	4
Sierra County Churches.....	5
Pliocene Ridge.....	6
River Canyon.....	7
Sierra Buttes.....	8
Lakes Basin Recreation Area.....	9
Sierra Valley.....	10
What To Do in Sierra County.....	11-21
Sierra County Map.....	22-23
What To Do in Sierra County.....	24-25
Dine & Drink.....	26
Shopping & Activities.....	27-29
Lodging.....	30-31
Services.....	32-33
Health & Medical.....	34-35
Local Businesses & Event Ads.....	36-45
Lodging Matrix.....	44
Trails Matrix.....	Inside Cover

MILEAGE CHART

Reno to Loyalton.....	42 miles
(Hwy 395, Hwy 70, Hwy 49)	
Reno to Sierraville.....	60 miles
(Hwy I-80, Hwy 89)	
Reno to Sierra City.....	79 miles
(Hwy 395, Hwy 70, Hwy 49)	
Sacramento to Downieville.....	99 miles
(I-80, Hwy 49)	
Sacramento to Sierra City.....	107 miles
(I-80, Hwy 49)	
Nevada City to Downieville.....	44 miles
(Hwy 49)	
Nevada City to Sierra City.....	56 miles
(Hwy 49)	
Loyalton to Downieville.....	49 miles
(Hwy 49)	
Truckee to Sierraville.....	30 miles
(Hwy 89)	
Truckee to Sierra City.....	49 miles
(Hwy 89, Hwy 49)	
Downieville to Sierra City.....	12 miles
(Hwy 49)	
Quincy to Calpine.....	49 miles
(Hwy 70, Hwy 89)	
San Francisco to Sierra City.....	202 miles
(I-80, Hwy 49)	

From Truckee: Hwy 89 N to Hwy 49 S

From the Bay Area: I-80 E to Auburn then Hwy 49 N through Grass Valley.

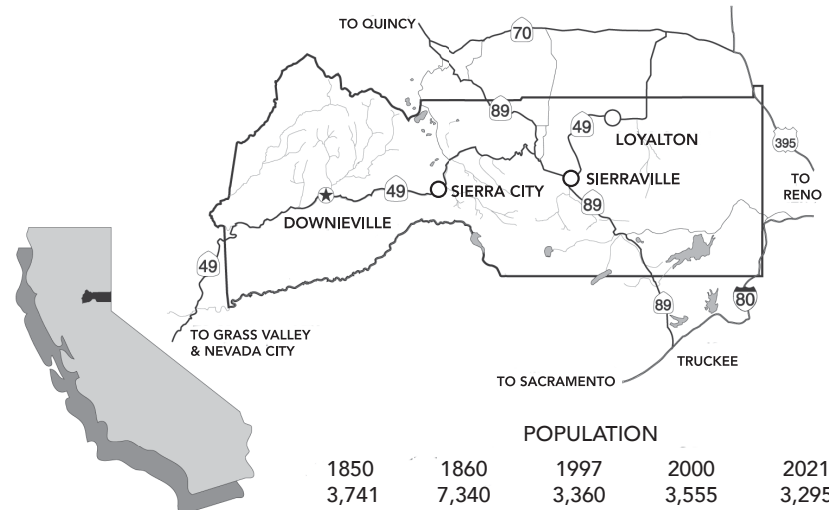
If you want to travel on unpaved roads while exploring Sierra County, it is recommended that you drive a high clearance 4WD vehicle.

Highways 49 & 89 are usually open all year even when interstates are closed due to snow conditions. Call Caltrans at 1-800-427-7623 for current road conditions or check online at: www.dot.ca.gov/cgi-bin/roads.cgi

Produced by the Sierra County Chamber of Commerce
800-200-4949
www.sierracountychamber.com

Design & Production by Yuba Creative
Printing by TIP Printing & Graphics, Truckee, CA.

A BIG thank you to the local photographers who have so graciously donated their work. Many sell their prints if contacted and several are locally available in galleries and shops, hint hint.



WELCOME TO SIERRA COUNTY

Sierra County is located in the heart of the northern section of the Sierra Nevada. It remains today much as it was 150 years ago when the gold-seeking argonauts worked the rivers and mountains in search of their fortune in gold. The rivers run free and the forests and meadows wrap their beauty around mountains that defy contemporary development. It's beautiful in all seasons.

Sierra County provides recreation year-round, and the scenery that sparkles with each new season. For all its wilderness and pristine beauty, Sierra County is easily accessible throughout the year. All major highways in the county are maintained and plowed during snowfall. Fishing, hiking and camping are available

#1 STAY IN TOUCH!

Visit our website at www.SierraCountyChamber.com, call 800-200-4949, or email info@sierracountychamber.com!

for all levels of interest and ability. Much of Sierra County is located within the Tahoe National Forest and residents and visitors alike benefit from the campgrounds, picnic areas, incredible nature experiences, and historic sites.

Bring your camera! Each season has its own character of beauty that can be captured in photographs. Spring melts the tapestry of a winter blanket, then gracefully captures the fields and

No gasoline is available in Downieville or Sierra City. Gasoline is available along Highway 49 in Camptonville during business hours. Gasoline is available at Bassetts Station (5 miles from Sierra City) during regular business hours. Over the Yuba Pass on Highway 49, gasoline is available 24/7 at Sierraville Service Station & Country Store, 126 Lincoln St./Highway 49 in Sierraville and at White's Sierra Station, 508 Main St./Highway 49, Loyalton.

DO NOT RELY ON GPS or online map directions when traveling in Sierra County. Refer to the map in the center of this publication.

rock crevices with a rainbow of color. Golds, reds, and yellows of fall adorn the alpine forests, river canyons, valleys, and mountain peaks. These beautiful mountain highways wander through some of the finest winter recreation sites in California.

Here shopping and dining is enjoyed in historic setting. Amenities range from campgrounds to lodging in comfortable historic buildings with modern conveniences, all surrounded by the rugged beauty of mountain forests, lakes, and rivers.

Sierra County is rich with beauty, natural resources and friendly people, but it has even more to offer. The Washoe and Maidu Indians, early gold miners, loggers, and ranchers left us with a priceless possession—a window to the past. Historic buildings provide a rare and unique look into American history as it spans time and into the present. When you visit, be prepared to take a step back, feel the adventure, sense the struggle, and experience the excitement of gold fever. Imagine the human spirit as it worked its way through this rugged country by foot or on horseback. You can almost hear the sound of creaking wheels and braying mules. Stop, listen, look.

Let others in on the secret—it's all here in the playground of the Sierra.

49 THINGS TO DO

ALONG HWY 49 IN SIERRA COUNTY

Sierra County is full of surprises, delights and fun adventures...

Keep an eye out for the number in a circle, sprinkled throughout this Visitors Guide, for tips, ideas, and suggestions for things to do or see. Remember these are only 49 wonderful things to do in Sierra County. To see more adventures, visit www.sierracountychamber.com or eastsierravalleychamber.com.

The rugged Sierra Nevada is paramount in the mountains and canyons of Sierra County. The rivers, lakes, and forests combined provide recreational opportunities and scenic beauty all year long. To help you explore all that Sierra County has to offer, we have divided this visitors guide into sections representing five distinct regions or areas:

The **Pliocene Ridge** runs west-east along the southern end of the county, straddling a ridge where Hennes Pass Road runs at an elevation around 5,000 ft.

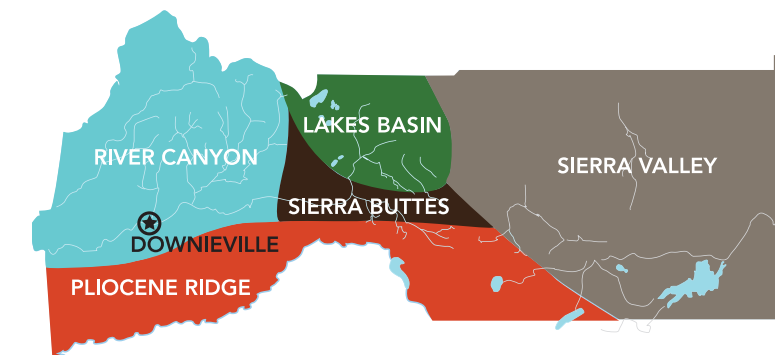
The **River Canyon** is the western middle part of the county, the area from where Highway 49 crosses the North Yuba River and starts running parallel to the river past Goodyears Bar and through Downieville all at around 2,000–3,000 ft.

As the highway climbs in elevation up the North Yuba River Canyon, you come into the **Sierra Buttes** area, where Loganville and Sierra City sit at the foot of the Buttes at about 4,200 ft. The Buttes themselves are almost 8,600 ft.

At Bassetts, Highway 49 meets the Gold Lake Highway which meanders around the north-east side of the Sierra Buttes, taking visitors to the **Lakes Basin** recreation area, where over 45 alpine lakes provide year-round recreation and scenic beauty.

If you continue on Hwy 49 over the Yuba Pass, at 6,702 ft., you drop into the majestic **Sierra Valley**. Situated at approximately 5,000 ft. this is one of the largest sub-alpine valleys in the U.S., famous for its history of ranching and amazing wetlands—a stop over for thousands of migratory birds each season.

Welcome to the best kept secret of the Sierra Nevada!



#9 RAISE YOUR GLASS...

and toast the many hearty souls that came before us. As you enter one of the old Gold Rush-Era saloons that found their home along Hwy 49, you will step back to a time of "free for all" feverish migration, where the merchants were the ones who made their fortune.

#31 RED, WHITE & BLUE...

From parades to street dances and carnivals to dunk tanks, we are sure you'll find a fun way to celebrate your Fourth of July weekend. Be sure to check our event calendar for locations and activities.

#48 HIKE TO A WATERFALL...

There are many waterfalls to be found throughout the county, but one in particular is an especially easy hike: Loves Falls, just east of Sierra City. As you head out of town going east, watch for a brown Pacific Crest Trail sign on your right. A bit further and you will see a large area to pull over and park on the right-hand side. To your right you will see two large trees with a chain running between them. Beyond the chain you will find a trail to the left, follow it along the ridge down to the bridge. The bridge over the falls are a part of the Pacific Crest Trail. The pool below the falls is a great swimming hole later in the summer.

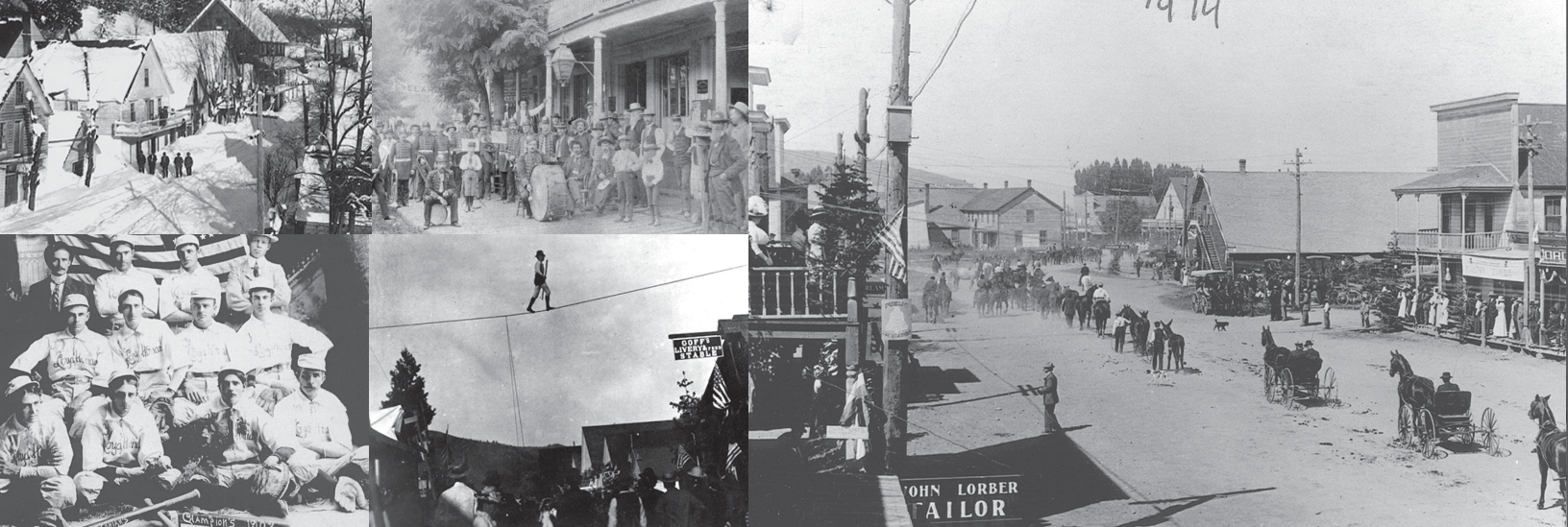
MORE INFO: worldwaterfalldatabase.com

#26 TAKE A STROLL...

Through one of Sierra County's historic towns that you'll find along Historic Route Hwy 49. The best way to experience California's Gold Rush history is to explore our wonderful towns and rural areas. Also look on the map for old ghost towns, though beware, many are accessible only with a 4WD vehicle and reading a paper map. GPS doesn't work well around here; neither do cellphones.

#25 KEEP CALM AND PEDAL ON...

Cycle past the many ranches in Sierra County and enjoy the views! Check out the trail guide on the inside back cover for 18 scenic and bike-friendly rides in Sierra County.



SIERRA COUNTY: EST. 1852

Sierra County is divided by the Pacific crest at the midpoint, with the western side of the county made up of steep canyons and forested ridges. The county was home to both Maidu and Washoe Indians, but its modern history is tied to the California gold rush. The discovery of gold, and subsequent gold rush, resulted in some 16,000 miners settling within the county between 1848 and 1860.

Dozens of communities with colorful names such as Brandy City, Poker Flat, Poverty Hill and Whiskey Diggins, were settled and thrived for a period. The population increased rapidly, and the county doubled in people in just 10 years. As the gold rush waned, Sierra County's population slowly diminished to its present number of a little over 3,000.

The most visible relic of the history of those years is the Sheriff's Gallows from 1885 that

remain standing adjacent to the County courthouse today. Built for the specific execution of a young murderer, James O'Neill, the structure was used only once.

The eastern side of the Pacific crest also has deep canyons and timberland, and, in addition, opens out to the great Sierra Valley, one of the largest sub-alpine valleys in the Sierra Nevada range.

During the gold rush, communities on the eastern side of the county developed to provide commodities to the growing gold camps, with agriculture as their base. A number of century-old ranches still continue the tradition of cattle ranching in the Sierra Valley.

Loyalton, the county's only incorporated city, today has about a thousand residents.



SIERRA COUNTY CHURCHES

DOWNIEVILLE

ASSEMBLY OF GOD CHURCH

114 Main Street, Suite 1
289-3125
Meets at Downieville School Gym
Sunday, 10am Services

IMMACULATE CONCEPTION CATHOLIC CHURCH

110 Sunnyside Drive
289-3102
Sunday, 11:30 am Services

SIERRA CITY

CATHOLIC CHURCH

See Listing for Immaculate Conception Catholic Church for information

SIERRA CITY METHODIST CHURCH

115 Butte Street
289-3140
Sunday, 9:30 am Services

LOYALTON

ASSEMBLY OF GOD CHURCH

803 Main Street
993-0709 for information and service times

CHURCH OF JESUS CHRIST OF LATTER DAY SAINTS

61600 Highway 49
993-4366 for information and service times

HOLY ROSARY CATHOLIC CHURCH

614-4th Street
832-5006
Sunday, 10:30 am Services

LOYALTON COMMUNITY CHURCH

601 Lewis Street
993-4411
Sunday, 10:30 am Services

SIERRAVILLE

SIERRAVILLE COMMUNITY CHURCH

424 S. Lincoln Street
994-3708 for information and service times



SIERRA COUNTY VISITOR CENTERS

DOWNIEVILLE

GOLD RUSH PARK

Contact email: info@sierracountychamber.com or website: sierracountychamber.com for further information

SIERRA CITY

BUTTE STREET - OFF OF HIGHWAY 49 MAIN STREET

Contact email: info@sierracountychamber.com or website: sierracountychamber.com for further information

LOYALTON

CHAMBER KIOSK IS LOCATED AT THE CORNER OF HIGHWAY 49 AND 2ND STREET

Contact email: info@eastsierravalleychamber.com or website: eastsierravalleychamber.com for further information

SIERRAVILLE

KIOSK IS LOCATED AT THE CORNER OF HWYS 49 AND 89

Contact email: info@eastsierravalleychamber.com or website: eastsierravalleychamber.com for further information



#3

TAKE A LOOK BACK AT OUR PAST...

as you stroll through our historic cemeteries in Sierra County. People came from all over the world to be a part of the California Dream. Please be respectful during your visit.

#1

VENTURE THROUGH OUR DOORS...

and explore the display of historical locations and objects from our Gold Rush period. Visit the Kentucky Mine and Museum in Sierra City, Downieville Museum, Goodyears Bar Museum, Underground Gold Miners Museum in Alleghany or The Milton Gottardi Loyalton Museum and Historical park in Loyalton.

MORE INFO:

www.undergroundgold.com
www.sierracountygold.com/History
www.sierracountyhistory.org
www.cityofloyalton.com/loyaltonmuseum.com



The Middle Yuba River forms the south-western border of Sierra County. This remote stretch of river winds through several box canyons and is rich in mining history. The Pliocene Ridge Road off Highway 49 near Camptonville takes you up the Pliocene Ridge above this river, where the towns of Pike, Alleghany and Forest City are nestled in the forest along the crest.

HISTORY

The Maidu and Washoe Indians are the first known residents of the Sierra Nevada. Their permanent homes were in the foothills where the snow wasn't too deep during the winter. But, in the spring they moved up high into the Sierra to gather roots and berries, hunt and fish throughout the summer. As the Europeans began exploring the area and discovered gold, emigration from around the world brought a new cultural era to the region. Mining camps and towns sprang up in Sierra County with each gold discovery. Many of these towns have since disappeared and been reclaimed by the forest, but some still exist today. On the Pliocene Ridge, Alleghany and Forest City remain as windows to our past.

Alleghany developed into a town from the consolidation of several mining locations of the early 1850s. There were hydraulic mining operations here



Lee Kirby

as well as drift tunnels that cut into the mountain's ancient river beds. The still-working Original Sixteen to One gold mine is located in Alleghany.

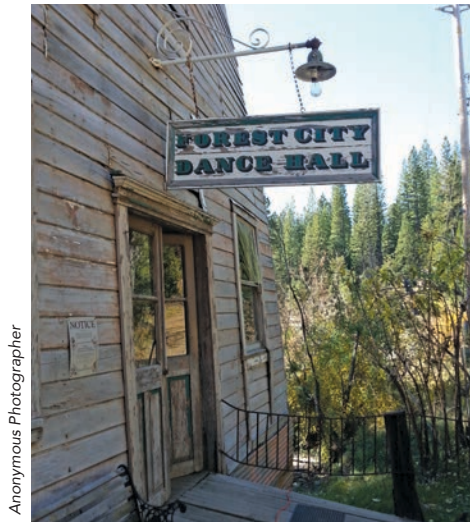
Forest City was established in 1852 and within two years had a population of over 1,000. The exceedingly rich and easily accessible claims continued to pay until the 1860s when much of the gold was worked out of the gravel deposits. Like most early settlements, fires ravaged the town during its early years, but there are still many historic buildings and sites to see and explore.

CULTURAL ATTRACTIONS

The Underground Gold Miners Museum in Alleghany is only open by appointment or during special events. Bring your group or club to the museum for a unique local history presentation including information on the local mines and geology. You also find the famous Original Sixteen to One Mine, which has been in operation for over 100 years, in Alleghany. During the annual gold celebration they do guided tours of the mine, as well as historical walks of Alleghany.

The tiny town of Forest City is its own open air museum. Most buildings date from the 1800s. Old buildings are being renovated on an ongoing basis. Tours of the museum can be arranged.

There is a self-guided walking tour brochure available that detail the town history and sites. Pick up your copy at the mail box in front of the Forest City Dance Hall.

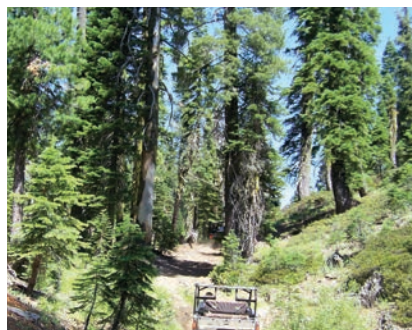


Anonymous Photographer



Mary Davey

#2 CANNON POINT...
At the vista point overlooking the town of Downieville sits a cannon which was purchased by Dr. E. G. Bryant in San Francisco, and brought to Downieville on July 1, 1862. It weighs twelve hundred pounds, fires a twelve pound ball and was used for celebrations, special events, and Independence Day, to add a bit of excitement to the day. It once proved to be deadly, due to a premature discharge. Today it sits as a silent sentry at the entrance of Downieville.



Mason Hemphill



Mary Davey

#10 HOW ABOUT SOME APPLE PIE...
The Annual Apple Harvest Celebration will be held in October, at the Forest City Dance Hall. Featuring our regionally famous apple dessert contest in 3 categories, with live music, stamp mill firing, and BBQ lunch available for purchase. There will also be historic tours of the National Register Townsite and Museum.

#41 IF YOU'RE FEELING LUCKY...
How about a real world outdoor treasure hunt game using GPS-enabled devices. You navigate to a given set of GPS coordinates and then attempt to find the geocache (container) hidden at that location. Happy hunting!

MORE INFO: www.geocaching.com

The River Canyon is the area where Hwy 49 parallels the North Yuba River from the bridge just west of Indian Valley, past Goodyears Bar and into Downieville. The canyon walls and forested hillsides provide a dramatic backdrop to the river and its many seasonal waterfalls. As the river and road wind together through the canyon, recreationists have easy access to swimming, fishing, and camping.

Winter in the River Canyon is mild with just a light snow cover. Summers are warm but not overbearingly hot, and the river is right there in case you need a dip!

At Indian Valley you will find an Outpost Resort surrounded by 5 campgrounds on the North Fork of the Yuba River. The Outpost has been servicing campers and travelers since the 1930s.

HISTORY

The Maidu and Washoe Indians are the first known residents of the Sierra Nevada. In the summers, they came here to hunt and fish. During the fall and winter, they returned to the foothills and valley below. When gold was discovered, emigration from around the world brought a new era to the region. Mining camps and towns sprang up in Sierra County with each gold discovery. Some towns are memories, but many still exist today as windows to our past.

Downieville, county seat of Sierra County, is located on Hwy 49 at the fork of the North Yuba and Downie Rivers. Gold was discovered here in the summer of 1849. By May 1850, Downieville had 15 hotels and gambling houses, 4 bakeries, and 4 butcher shops. 5,000 men wintered in town that year. In the following spring, that population scattered into the surrounding hills and canyons in search of gold. As the population of the area grew, Downieville served as a trading center for the Northern Mines. By the mid-1850s, Downieville was California's fifth-largest town. In 1852, Downieville lost the bid to be the State Capitol to Sacramento by 10 votes. Today, it retains much of its former character.

Goodyears Bar was named for two brothers, Miles and Andrew, who came looking for gold in 1849. In 1862, there were almost 5,000 people and 51 businesses in town, with gold being the main economy. Much of the town burned in 1864 and was never rebuilt, except for the post office which is still in operation. Historic buildings remaining include the Helm's St. Charles Inn and the old Goodyear's Bar Schoolhouse. Built around 1872, it is still used as a community gathering place. It's now a museum, open to

the public, featuring a few different exhibits.

CULTURAL ATTRACTIONS

The Downieville Museum building dates back to 1852 when it was built as a store by Chinese emigrants. Today it contains informative collections that depict life here from gold rush days to the present. It features a detailed model of turn-of-the-century Downieville as well as logging and mining exhibits. It's open weekends mid-May through mid-October (weather permitting) 11 am-4 pm; daily 11-4 from Memorial Day through Labor Day.

The Yuba Theatre was built in 1940 as a movie theater. Since 1996, it has been the home of the Sierra County Arts Council. It currently has fixed seats for 184 and has been transformed into a professional performing arts venue. Year-round events include presentations of live music, community theatre, dance, school drama productions, book-signings, slide shows, and film. The Banff Mountain Film Festival World Tour comes to Downieville.

Main Street in Downieville is narrow, full of character and lined with trees, wooden boardwalks, historic buildings, and benches for a little rest. It's considered the least changed of all the gold rush towns in California. There is a self-guided walking tour brochure available for Downieville that details the town's history and sites.

#5 AND THE SHOW MUST GO ON...
The Historic Yuba Theatre was built in 1940 and is located at 212 Main Street in Downieville. This wonderful & unique theater is home to many community events including movies, film festivals, musical presentations, dance classes, school drama and community theater productions and more.

#18 SIERRA COUNTY SHERIFF'S GALLOWES...
Located at Gallows Road & Courthouse Square, it was built in 1885, and is the only authentic, standing gallows in California. The gallows were designed to be portable. After its one and only use, the last execution in Sierra County, it was dismantled and stored in the attic of the courthouse, eventually forgotten. Discovered by county employees in 1927, it was reassembled adjacent the courthouse and is a California historical landmark.

MORE INFO: <http://noehill.com/sierra/nat1990000118.asp>

#37 CHEERS TO BEERS...
Summer is calling and what better place to be on a hot July day than in Downieville for the Downieville Mountain Brewfest! Relax and unwind while tasting a variety of popular craft beers. Music, food and beer - a winning combination! Check the brewfest website for dates and details:

MORE INFO: www.downievillebrewfest.com



Anonymous Photographer



Mary Davey

Highway 49 parallels the North Yuba River all the way from the River Canyon area, past Loganville and into Sierra City. This scenic drive provides travelers and recreationists easy access to sight-seeing, fishing, camping and swimming.

This stretch of road provides a kaleidoscope of terrain and plant communities. The craggy peaks of the Sierra Buttes are a spectacular site any season, whether in the winter and spring when adorned with a tapestry of snow, the fall when the trees glow in autumn colors, or the summer when flowers abound and the water is a perfect temperature for swimming and play.

HISTORY

Development of communities and recreation in Sierra County was the direct result of the discovery and search for gold in California. As the roads improved, travelers began to stop and enjoy the beauty and wildlife.

Sierra City was established as a mining town in 1850. By 1852, miners were retrieving gold from several tunnels in the nearby Sierra Buttes. At this time, Sierra City had two large buildings, a bakery shop and several gambling houses and saloons. The buildings were crushed under an avalanche of snow in the winter of 1853, forcing the inhabitants to rebuild at the present lower elevation. The Sierra Buttes Mine was active for 80 years and was the second largest gold producer in Sierra County. A continuous body of medium grade ore was processed efficiently, assuring steady employment. Loganville campground is situated east of the former town of Loganville. In

1889, Luigi Lagomarsino planted an orchard, a clover field, and a garden here. This is an example of a typical homestead of that time. Many of the original miners in Loganville and Sierra City were immigrants from Italy, France, and the British Isles.

CULTURAL ATTRACTIONS

The Kentucky Mine, Stamppill, and Museum is located just east of Sierra City on Hwy 49. The museum offers guided tours into the underground mine and also into California's only remaining workable gold ore stamp mill. The museum depicts the gold rush era of Sierra County, life in a mining camp, and the local American Indian culture.

Main Street in Sierra City is charmingly narrow and lined with many late 19th century structures, complete with wooden boardwalks. A free walking tour map is available at most Sierra City businesses.

The Masonic Hall, built in 1864, is the oldest building in town and was also the first schoolhouse in town. Sierra City provides dramatic views of the Sierra Buttes. The Wells Fargo building in Sierra City typifies 1870s Federalist Style architecture. This two-story brick structure was historically used as a mercantile store and Wells Fargo Express and Company stage coach stop in the 1870s.

SIERRA BUTTES



Don Yegge



Jonathan Kibrick

#37 COUNTRY MARKET BAZAAR MEET & GREET
 July 4 - August 6 - September 3 - October 1. At the Chamber Kiosk located at the corner of Highway 49 & 2nd Street, Loyaltown and in Sierraville on select dates. 10am to 2pm.
www.eastsierravalleychamber.com

#19 'EINS, ZWEI, DREI, ZUPPA'...
 What's more fun than Oktoberfest? One in a small Alpine town! Willkommen to Sierra City's annual festival celebrating Oktoberfest. Here you will find live music, beer, kraut and brats, provided by the Sierra City Improvement Group, and vendors lining Main Street for this fun, family event. Join us in early October! Lederhosen are optional but encouraged!

#29 A CELEBRATION OF HOT RODS & LOST YOUTH...
 Find yours at The Big City Rod Run, held on Sierra City's Main Street. Over 100 beautiful cars gather in this cool mountain town for a fun and unique event. They call it a car party and that about sums it up.
MORE INFO: jim@buttesresort.com

#12 MUSIC AT THE MINE...
 Music at the Kentucky Mine Amphitheater, under the stars, provides an outstanding way to enjoy an evening of entertainment.
MORE INFO: sierracountyhistory.org



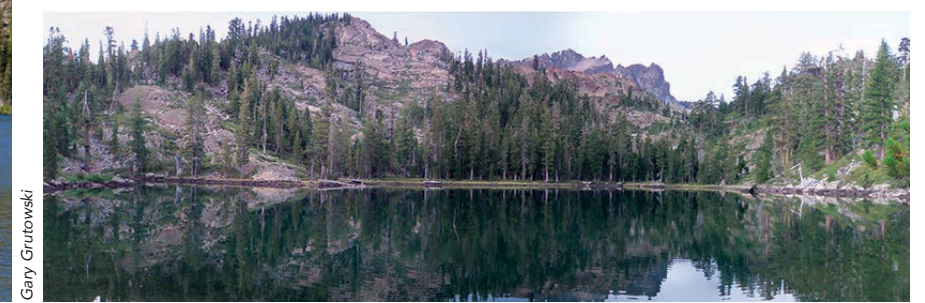
Darby Hayes



Michelle Burr



Jonathan Kibrick



Gary Grutowski

The Lakes Basin Recreation Area is to the north of the Sierra Buttes, along Gold Lake Road. Bassetts Station is considered the gateway into this outdoors wonderland. Numerous glacially formed lakes add to the unique beauty of the landscape and offer recreation in its most pristine form. Upper and Lower Sardine Lakes, Packer Lake, Salmon Lake and Gold Lake are just a few.

The craggy peaks of the Sierra Buttes are a spectacular site, especially in the winter and spring when adorned with a frosting of snow. There are several excellent views of the Sierra Buttes from Gold Lake Road and along Hwy 49. During the winter, cross-country skiers and snowmobilers have a unique opportunity to explore a winter wonderland made more beautiful by the rugged mountainous backdrop.

#6 A POND TO PONDER...
 Sand Pond Interpretive trail in the Lakes Basin, features wheelchair accessible wooden boardwalks that meander through a fern lined path across a wetland with numerous stretches of shallow, clear water. It shows off the flora and fauna of a riparian habitat and provides a wonderful experience for those who cannot hike the typical mountain trail.

#40 A CONNECTION TO THE PAST...
 The Lakes Basin Petroglyphs were left by the Maidu Indians who lived in this area for at least 1,000-2,000 years. Take Hwy 49 to Gold Lake Road and then turn left on Elwell Lodge Road. The Petroglyphs are about 1/2 mile from this point, on your right.

#8 DISCOVER OUR HIDDEN GEMS...
 The Lakes Basin Recreational Area consists of numerous glacially formed lakes. It is located north of the Sierra Buttes, along Gold Lake Road. Bassetts Station is considered the gateway into this outdoor wonderland. It's unique beauty offers recreation in its most pristine form. Sardine, Packer, Salmon, and Gold lakes are just some of these outstanding lakes. Grab your kayak or hiking shoes and be amazed. And don't forget your swimsuit (but stay out of Sardine lake, no swimming allowed!)

#35 THE BEST VIEW EVER!
 This 5-mile hike from Packer Lake Saddle heads up to the historic Sierra Buttes Fire Lookout. At 8,591 ft, it has everything from a 360 degree lookout deck with amazing vistas to some crazy stairs. This is a steep hike and getting to the lookout is not for the faint-of-heart. On a clear day you can even see Mt. Lassen, 100 miles away.
MORE INFO: <http://alltrails.com/trail/us/california/sierra-buttes-lookout-from-pct-trailhead>

Yuba Pass, while not in the Lakes Basin proper, also has camping and recreational trails off Hwy 49 on the way into the Sierra Valley.

HISTORY

Development of communities and recreation in Sierra County was the direct result of the discovery and search for gold in California. As the roads improved, travelers began to stop and enjoy the beauty and wildlife. Californians in the late 1800s were very interested in primitive environments for recreation and relaxation. Wilderness camping and mountain climbing were important aspects of this movement with a special appeal to city people as a temporary relief from the frantic pace of urban life. A form of medical treatment known as the "wilderness cure" enjoyed considerable popularity in California during the late nineteenth century and brought many recreationists to Sierra County. By the late 1920s, the Lakes Basin area boasted a number of popular resorts with fishing, swimming, boating, and lodging available.

Shortly after the mid 1850s, a lodge was built at Gold Lake. Packer Lake was on an early mule-pack trail and in 1926 a lodge was built, along with platform tents and log cabins. Gold Lake Road was constructed in 1913 providing easier access to the lakes and resorts. Bassetts Station, at Hwy 49 and Gold Lake Road, began as a way station over 125 years ago. It continues to provide a rest stop and supply point for travelers. Sardine Lake Resort was constructed in 1941 and multiple guest cabins were added in 1945.

#15 RELAX AND LET IT GO...

Visit the Sierra Hot Springs Resort and Retreat Center, in Sierraville. The resort offers a retreat and workshop center located at the cusp of a beautiful alpine valley and an enchanted forest. The natural springs water is smooth as silk and the pools are a true experience. Here it is impossible to resist the sense of tranquility. For centuries, Native Americans have regarded this land as a sacred healing place. You're now invited to discover its incredible powers for yourself.

MORE INFO: www.sierrahotsprings.org

#17 TOUR DE MANURE...

Pedal through the beautiful Sierra Valley on this bike touring benefiting the Sierraville Fire and Rescue Dept. Metric, half century loops or a 30-mile round trip route give sweeping views with only mild elevation gains. Plans are in process for this event to return in June 2024. Check back next year for more information.

MORE INFO: www.tourdemanure.org

#21 A ROOM WITH A VIEW...

The Calpine Lookout Tower was constructed in 1934 by the Civilian Conservation Corps and is one of three remaining examples of the enclosed windmill-style lookout in California. Imagine spending the night in this unique setting of the Tahoe National Forest! The views are stunning, and the hike there a really nice one.

MORE INFO: 7x7.com/tahoe/escape-sf-tahoes-calpine-fire-lookout

#24 KEEP YOUR EYES OPEN...

for the Sierra Valley Barn Quilt Project. Barn quilts are painted quilt squares mounted on barns. The Barn Quilt Trails can be found in rural counties throughout America. The trails lead you through the countryside exploring the history, culture, and landscape of the area.

MORE INFO: sierracountyartscouncil.org

#36 THEM, REAL COWBOYS?

The beautiful Sierra Valley is the largest intermountain valley in the Sierra Nevada. It lies at a 5,000 ft elevation, just 35 miles northwest of Reno, NV. Nearly the entire valley floor is comprised of large, privately owned ranches. It is covered with sagebrush scrub, broken by freshwater marshes, grasslands, and riparian woodland. It is a recognized IBA—Important Birding Area—by the Audubon Society. At the right time of year, it is possible to see over 100 species in a day.



David Keyes



Katherine Genasci



Don Yegge

CALPINE • SATTLEY • SIERRAVILLE • LOYALTON • SIERRA VALLEY

Sierra Valley is part of the continental crust that was created by the same faulting that raised the Sierra Nevada. The vista point on Hwy 49, east of Yuba Pass, provides a spectacular panoramic view of this beautiful sub-alpine valley where Sattley, Calpine, Sierraville, and Loyalton lie surrounded by the majestic mountains of the Sierra Nevada. The scenery varies from conifer and aspen forests, to drier woodland, to a large valley covered with crops, pastures, and wildflowers. Smaller valleys and meadows are laced with meandering streams. Cattle share the pastures with deer and other wildlife. Old ponderosa pine trees are a special feature in the landscape along the South eastern stretch of Hwy 89 near Truckee.

HISTORY

The Sierra Valley ranches were settled in the 1850s. The ranches provided dairy products, hay, and cattle for Truckee, the western Sierra County mines and the Comstock Mines. The lumber industry was also part of this healthy agricultural economy and its timber supplied the Comstock mines, Central Pacific Railroad, and fruit industry from the 1860s to the turn of the century. The early 1900s marked a decline in the timber demands with the closing of mines, but the lumber industry continued to be an important aspect of the economy and culture of the valley until the late 20th Century.

By the 1880s it was one of the finest agricultural regions of California.

Since 1853, much of the population has been devoted to cattle raising and farming. Many of the existing ranches and barns were built in the 19th century.

CULTURAL ATTRACTIONS

Calpine was built as a company-owned sawmill town for the Davies-Johnson Lumber Company and its 500 workers.

Loyalton was originally known as Smith's Neck. In 1863, the loyalty to the Union Cause during the Civil War led to changing the name to Loyalton. In 1901, it was incorporated as a dry town, the size was set at 50.6 square miles. At that time, it was California's second largest city after Los Angeles. Today, Loyalton is the only incorporated city in Sierra County. The Loyalton Museum is located in the old Loyalton Middle School building. The museum features displays on logging, agriculture, the Washoe Indians, and fraternal organizations including the Rebekah Lodge. Outdoor exhibits include logging wagons, a donkey engine, and farm equipment.

Numerous historic barns and farm houses throughout Sierra Valley date back to the 19th century. Many are still in active use. The brick building by the gas station in Loyalton was built around the turn of the 20th century. This building, along with the old grocery store in Sierraville, are two of the few remaining buildings constructed of Sierra Valley brick.

FIND YOUR NEW FAVORITE THINGS TO SEE & DO IN

SIERRA COUNTY

MOUNTAIN BIKING

Once the snow melts in the Sierras, the sleepy Gold Rush town of Downieville transforms into a mountain bike mecca, as it's surrounded with world-class downhill and cross-country trails. Downieville has become synonymous with seemingly endless singletrack trails running through heavily forested ridge lines, canyons, and crystal clear mountain streams and rivers.

With the steep and rocky terrain surrounding the Downieville area, none of the singletrack trails are beginner trails. However, there are multiple dirt roads throughout the County for those who lack the technical skills for the singletrack trail system. Many trails are multi-use and maintained by local bike shops through volunteer trail work. Remember bike etiquette and yield to

other users.

The 15 mile, 4000' descent of the world-famous Downieville Downhill starts at Packer Saddle with Sunrise Trail linking up with Butcher Ranch Trail, a 150-year-old mining trail set on steep single track terrain with rock gardens and smooth sections of lush trail. Then the decision is whether to take Third Divide, a super-fast, smooth section of singletrack through the forest, or Second Divide with its steep, rolling singletrack along Pauley Creek. Next is Upper First Divide, an old mining flume following Lavezzola Creek, which links to Lower First Divide Trail following Pauley Creek and dropping into Downieville. Pauley Creek, Big Boulder, and Lavezzola Creek Trails are alternate singletrack trails, which can be ridden from Packer Saddle. Traversing and

extra pedaling pays off with fast, narrow trails and numerous rock gardens.

North Yuba and North Yuba Connector Trails run down river for 14 miles and can be ridden in either direction from Downieville or from Indian Valley. The cross-country singletrack trails challenge with equal climbs and descents. Halls Ranch and Fiddle

Creek Trail run adjacent to the North Yuba Trail and offer heart-pounding climbs, beautiful ridge top scenery, and ripping descents. Bring your expert legs and lungs.

Chimney Rock, one of the most scenic trails in the area, reaches 7200' and can be shuttled or pedaled from Downieville. From the top of Chimney Rock, Empire Creek Trail, Rattlesnake Creek Trail, or Herkimer Mine Trail, plunge you 4000' back to town.

The historic mining town of Forest City sits on the Pliocene Ridge and offers access to a network of incredible singletrack, cross-country trails.

The Downieville Classic is a multi-day mountain bike race and festival. There is a cross-country race that starts in Sierra City, traveling over the Sierra Buttes, and down the trails into Downieville, and the following day is a downhill race on the famous Downieville Downhill. Lots of activities take place during the festival, including a river jump competition, live music, bike expo, and street fair. Downieville offers various shuttle services to Packer Saddle as well as rental bikes.

For great road riding, the Sierra Valley offers unsurpassed beauty and never-ending stretches of beautiful meadows, wetlands with uncountable numbers of bird species, free-range cattle, and ranches that have been active since the Gold Rush.

Mary Davey

#13 YAHOOOOOOO! HOLD ON TIGHT...

The Downieville Classic mountain bike festival features a rugged 29-mile point-to-point cross-country race following a Gold Rush-era route. The race weekend also includes a 15-mile downhill race and is peppered with crowd-pleasing events like a river-jump stunt competition and mechanical bull rides.

MORE INFO: www.downievilleclassic.com

#45 FIND YOUR COMFORT ZONE & GO!

Once the snow melts in the Sierras, your choice of world-class downhill and cross-country trails running along heavily forested ridgelines, through canyons and along crystal clear mountain streams and rivers, is endless. For beginners to the extreme there's something for everyone.

MORE INFO: www.downievilleoutfitters.com
www.sierratrails.org
www.yubaexpeditions.com

CAMPING



Mary Davey

Camping in Sierra County is a dream come true whether you're a couple of friends, a family or even several families, a group on a company outing, or a couple out on a romantic trip. Over 70% of Sierra County is National Forest, and there are many different types of campgrounds all across the county.

Campgrounds range from single sites to large group areas with parking lots that can accommodate horse trailers. Some campgrounds are near rivers and streams; some are at the edges of alpine lakes; and some are tucked into the forest or flowering meadows. All are incredible.

In the western end of the county Fiddle Creek Campground near the North Yuba River bridge is popular. It is easily accessed from Hwy 49 and has excellent river access. Rocky Rest Campground is less developed but also offers amazing access to the river for swimming and fishing. These are just two of the many campgrounds in this area along Hwy 49 and the Yuba River.

Further east along Hwy 49, between Downieville and Sierra City, Loganville provides excellent camping facilities in an area with ample shade with dense oak and fir trees. The Loganville Highway Visitor Center & RV Dump Station on the north side of the highway provides maps and basic RV amenities. There are also several RV parks in the county.

At the eastern end of Sierra City, the Wild Plum Campground provides camping right on the beautiful Haypress Creek with lots of hiking trails nearby. There is also excellent swimming, gold panning, and fishing available right from the campground as well as some amazing hiking trails.

Leaving Hwy 49 at Bassetts, Gold Lake Road takes you into the heart of the Lakes Basin Recreation Area and connects Sierra County to Plumas County near Graeagle. The numerous campgrounds in this area, many directly on a lake, offer several levels of amenities including boating, swimming, fishing, piped and stream water, camping stoves, travel trailer spaces, and sites for horse trailers. Imagine a place where you can have a whole lake to yourself on a summer's night. That's the Lakes Basin.

You'll find several campgrounds on the stretch between Bassetts and Yuba Pass along Hwy 49, and there are also many campgrounds along Hwy 89 between Sierraville and Truckee. Groups of up to fifty people can be accommodated at the Prosser Group Campground, which offers opportunities for swimming, cooking stoves as well as space for trailers.



Anonymous Photographer



Darby Hayes

#21 A SLEEPOVER YOU'LL NEVER FORGET...
 There is just something about getting away from the noise and lights of the city that gives you an opportunity to really enjoy our world's beauty at night. It is true—the stars really do put on a show for free. Grab your blanket or sleeping bag and prepare to be amazed.

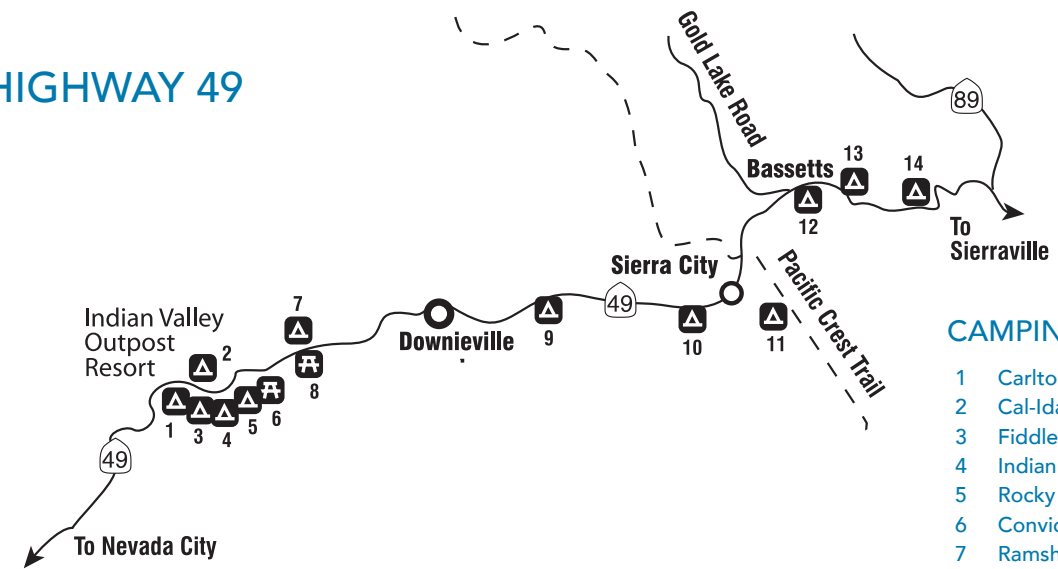
#42 FIND THE PERFECT STICK...
 The art of a perfect roasted marshmallow is in the stick. Find yours and enjoy the outdoors in one of the many campgrounds Sierra County has to offer.

MORE INFO:
www.fs.usda.gov/tahoe
www.recreation.gov
 call 1-877-444-6777

Small resorts tucked in among trees and lakes offer comfort and amenities for those wishing to forgo the sleeping bag experience. Resorts also provide different levels of services such as prepared meals and housekeeping.

CAMPING & DAY USE

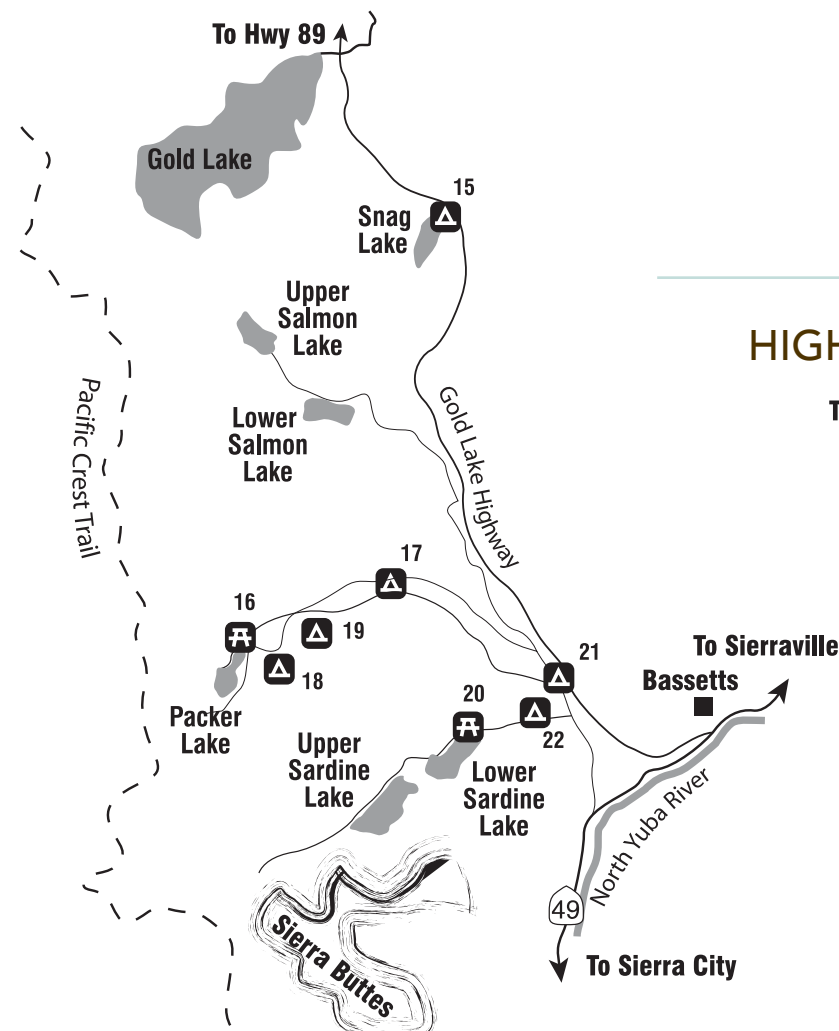
HIGHWAY 49



CAMPING & PICNICKING AREAS

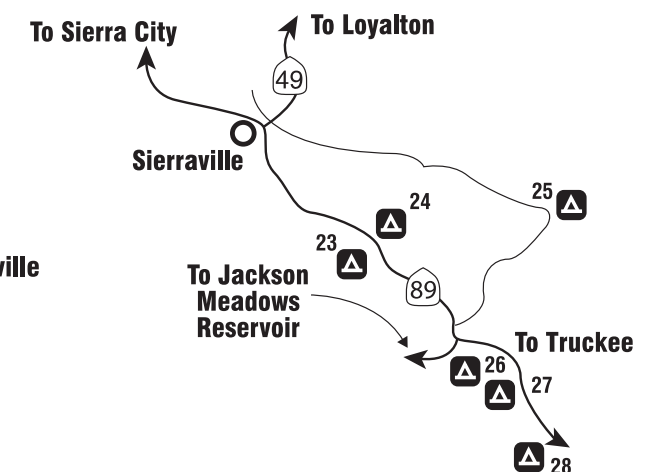
- | | |
|-----------------|------------------|
| 1 Carlton Flat | 8 Indian Rock |
| 2 Cal-Ida | 9 Union Flat |
| 3 Fiddle Creek | 10 Loganville |
| 4 Indian Valley | 11 Wild Plum |
| 5 Rocky Rest | 12 Sierra |
| 6 Convict Flat | 13 Chapman Creek |
| 7 Ramshorn | 14 Yuba Pass |

SIERRA BUTTES & GOLD LAKE HIGHWAY



- | |
|------------------------------|
| 15 Snag Lake Campground |
| 16 Packer Lake Picnic Ground |
| 17 Diablo Camping Area |
| 18 Packsaddle Camping Area |
| 19 Berger Campground |
| 20 Sand Pond Picnic Ground |
| 21 Salmon Creek Campground |
| 22 Sardine Campground |

HIGHWAY 89



- | |
|------------------------------------|
| 23 Cold Creek Campground |
| 24 Cottonwood Campground |
| 25 Bear Valley Campground |
| 26 Upper Little Truckee Campground |
| 27 Lower Little Truckee Campground |
| 28 Sagehen Campground |

MAKE CAMPGROUND RESERVATIONS AT WWW.RECREATION.GOV OR 1-877-444-6777. RESERVATIONS ARE MANDATORY.

BIRD WATCHING



Katherine Genasci

Sierra County is a birdwatcher's paradise. Every area of the County provides outstanding opportunities to see birds both common and rare. And, there are lots of birds!

At dusk, bridges in Downieville are likely to produce swallows and bats foraging for food. During the day Kingfishers, ospreys, and bald eagles feed in the vicinity. The Empire Creek Trail near Downieville passes through large areas of older forests inhabited by pileated woodpeckers, northern goshawks, pine martens, and California spotted owls.

In the Lakes Basin Recreation Area,

Sand Pond Interpretive Trail near Sardine Lake Campground features wheelchair accessible wooden boardwalks that follow fern-lined paths and cross stretches of shallow, clear water. This trail is barrier-free and provides viewing opportunities of a wetland that has been enlarged by a family of beavers. The path also allows visitors to view summer mallard broods and trout close up.

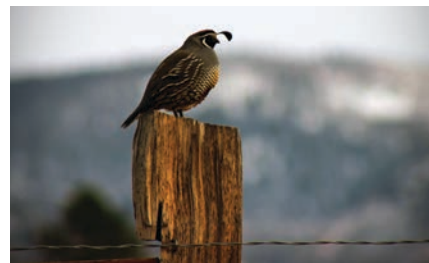
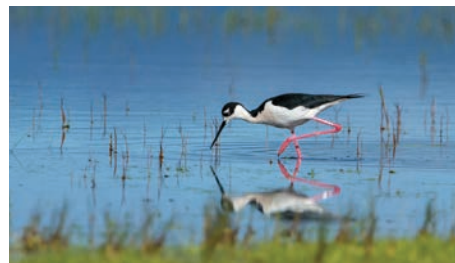
In the Lakes Basin, bald eagles and osprey fish on the many lakes. Many of the meadows in this area such as Church and Howard Meadows provide great viewing of songbirds like the willow flycatcher and various types of warblers. Trails off the Yuba Pass also provide excellent bird-watching opportunities.

In Sierra Valley, the Carman Valley north of Calpine has 30 to 40 acres of vernal habitat during spring and early summer. This area is an excellent place

to view nesting waterfowl, including wood ducks and shorebirds. The Steel Bridge, located over the headwaters of the Feather River, provides an opportunity to view Canadian geese, great blue heron, sandhill cranes, numerous ducks, and songbirds. This is private property, so please do not explore on foot. Sierra Valley is also the home of grouse, chucker, and California mountain quail.

Jackson Meadows Reservoir entertains broods of Canada geese, mergansers, mallards, and green-winged teal. Several meadows offer good evening views of mule deer. Bald eagles visit in the late fall. Kyburz Marsh off Hwy 89, 10 miles north of Truckee, is approximately 200 acres of wildlife refuge. It provides wildlife viewing for waterfowl, shorebirds, songbirds, numerous species of hawks, osprey, and bald eagles. Several waterfowl nesting islands are located within the area.

#21 THIS ONE'S FOR THE BIRDS...
The Great Backyard Bird Count is held in mid-February each year. This annual event takes place world wide and is your chance to help scientists track the health of our bird populations.
MORE INFO: www.birdcount.com



Photos by Darby Hayes

Bre Whitley



FALL FOLIAGE

Mary Davey

Photos by Darby Hayes

FISHING



Darby Hayes

Western Sierra County offers a variety of fishing experiences. With the abundance of lakes in the Lake Basin Recreation Area, as well as many streams and the North Fork of the Yuba River, anglers have options. Spend a little time walking in to Saxsonia Lake for nice rainbows and brookies. A short one-mile four-wheel drive to upper Tamarack Lake can yield cagey brook trout if you are patient. You can get into cut throat trout after an intense hike off Hwy 49 up to Deadman Lake. And if you are really adventurous, there's the descent to Young America Lake for brook trout and a chance at hold-over golden trout from days of yore.

Just want to get right to fishing? Then head out to one of the many lakes such as Packer, Sardine, Salmon, and Gold that you can drive to, have boat ramps, and are full of Rainbow and brook trout. Gold Lake will also give up trophy lake trout if you know how! Many of these lakes are stocked on a regular basis and yield good takes. Check the wildlife.ca.gov website for planting schedules.

Bait and tackle can be found at Sierra Hardware in Downieville, the Sierra Country Store in Sierra City, Bassets Station in Bassetts, and at Sardine Lake Lodge. Sardine Lake Lodge also rents row boats with electric motors. Trolling night crawlers behind flashers on Sardine Lake is very productive.

Fly fishing is effective on all the lakes from the bank or with float tubes, but the streams and river are the real treat.

The North Yuba offers rainbows, brooks and browns top to bottom. It is currently open all year. All the small tributaries including Salmon Creek, Packer Creek, Haskell Creek, and Sardine Creek are challenging, full of brooks, rainbows and an occasional brown. You can't go wrong with a dry-dropper rig although indicator nymphing and streamers in the deeper pools and runs is more likely to get you into larger fish.

These are typically 3-to-5-weight waters.

#44 GET HOOKED...
and enjoy one of the many great fishing spots in beautiful Sierra County.
MORE INFO: sierracountychamber.com
alllaketahoe.com
<https://wildlife.ca.gov/Licensing/Online-Sales-Change>

If you have a 4WD, a cruise down to Gold Valley to Pauley Creek makes for a great day trip and the brook trout are spunky. The North Yuba River below Downieville will give you some bruisers on occasion with lake run fish over 10 pounds caught in the recent past. The Downie River and Lavezzola Creek are excellent fisheries and produce great

action. Basically, if you see the indication of a year round stream on your map it will have at least wild brook trout in all the shady holes.

Our hatches are of the typical Sierra variety: blue winged olives, pale morning duns, an occasional green drake, little yellow sallies, ants, hoppers, golden stones and the usual mess of caddis with an emphasis on October caddis. There's a fly box in Downieville at Sierra Hardware and in Bassetts at Bassets Station. CA Licenses are available in Downieville at Sierra Hardware.

As always check the wildlife.ca.gov regulations to ensure you are in compliance and then spend a few days trying out our fisheries. You won't be disappointed.



WHITE WATER SPORTS

Darby Hayes

When rafting or kayaking on the North Fork Yuba River, you travel through the heavily forested Tahoe National Forest, on waters fed by the snowmelt from the majestic 8000+ peaks of the Sierra Buttes.

Despite its proximity to the Bay Area, the North Fork Yuba River is an uncrowded gem, with just three

permitted outfitters. Tributary Whitewater Tours, a long-time Sierra County Chamber member, is one of the original companies who pioneered this river for commercial rafting in 1981.

During the spring snowmelt, the river provides great Class 4 and 5 whitewater rafting, as well as easier waters for beginners too.

Kayaking can be done all summer long depending on the level of the rivers, and even at lower flows, the North Yuba River still offers exciting rafting in smaller boats. Tributary Whitewater Tours offers 1-4 day rafting thrill trips on over 35 miles of river, including the Maytag, Moss Canyon, and Rossasco Ravine.

SWIMMING

Mary Davey

#47 HEAD FOR A SWIMMING HOLE...

Rivers, streams, and lakes throughout the county provide exceptional swimming. The North Yuba River provides many excellent swimming holes all along Hwy 49. The swimming hole by the Rocky Rest Campground bridge is one of the best, but it's a well known secret so you probably won't have it to yourself. There are plenty of other ones to discover. Pull over where it's safe and explore the river.

Sierra County is a swimmers paradise. Between the North Yuba River, the many creeks and all the lakes there are oodles of places for swimming throughout the county.

As you drive along the river, pull over where safe and see if you can't find yourself a great little spot to take a dip. Or, take of note of where others park, and come back some other time.

In the heart of Downieville, there is a great swimming hole where the Downie River meets the Yuba River, though you'll have competition with eager fishermen.

In the town of Sierra City, accessing the river is a little tricky, but there are plenty of places to get to the river outside of town and many swimming holes nearby. One of the best is by Wild Plum Bridge on Haypress Creek on the way to Wild Plum Campground, and there are several additional swimming holes along Haypress Creek on the way towards the campgrounds. Another great place to swim is by Loves Falls, just east of Sierra City. There are also plenty of places to stop along the river between Downieville and Sierra City or eastward towards the Lakes Basin.

In the Lakes Basin Recreation Area there are numerous lakes and ponds and almost all of them are as made for swimming. Unspoiled lakes reflecting the Sierra Buttes will let you both have fun and relax. Salmon Lake is great for swimming, and a little wading will take you to a fun rock to jump off. Sardine Lake is off-limits as far as swimming goes, but the nearby Sand Pond is great, especially for small kids.

On the eastern side of the County, Jackson Meadows Reservoir is very popular and highly prized for water sports. There are more than 130 campsites, 5 group campsites, and a disposal station available here. This area is best accessed from the Little Truckee Summit at Hwy 89.

These are just some of the many amazing swimming spots available. Get to know a local and maybe they'll show you their favorite spot!



Mary Davey

#30 GRAB YOUR CAMERA...

Be prepared to capture some outstanding photos of autumn, our most beautiful time of year. Mother Nature sets the clock for this colorful time of year, usually sometime October through November, when the nights are cool. She uses a palette of bright yellows, orange, and red, to put on a show like no other. Mark your calendar and we'll see you in the fall.

#22 GET YOUR HOG CALL ON...

at the Plumas-Sierra County Fair. The fair is a 4-day event held July 27th to July 30th, 2023, at the Plumas Sierra County Fairgrounds in Quincy. From hog calling to quilts and livestock to carnival rides—come back to your roots at our county fair.

MORE INFO: plumas-sierracountyfair.net

#4 RULES, WE DONT NEED NO STINKIN' RULES...

The Great Yuba Pass Chili Cook-Off, is always held on the first Saturday in March, at the top of the Yuba Pass, regardless of rain, sleet, or snow. There are no rules, just lots of fun! Bribery is encouraged. Bring your chili and all your gear for a chance to win a second-hand trophy and bragging rights. Judging starts noonish, sharpish.

BOATING

Darby Hayes

The Lakes Basin Recreation Area has dozens of lakes (some say at least 40!) and provide ample space for recreationists to enjoy solitude and

comfort as well as fun and adventure. Boating is restricted to small boats with small or no motors, though Gold Lake is big enough for larger sail boats as well — and a full day of fun. There are many coves to anchor in, to take a break, and a dip.



Dave Keys

Kayaking on the many lakes has become a great outdoor sport. Spend the day kayaking on the lake with a picnic on an island for a perfect day.

Jackson Meadows Reservoir, accessed from Hwy 89, is very popular and highly prized for fishing, swimming, camping, wildlife viewing, water skiing, jet skiing, and sailing.

There are over 130 campsites, 5 group campsites, and a disposal station.

Independence Lake, managed by the Truckee Donner Land Trust and the Nature Conservancy, is open year-round for walk-ins, but staffed and available by car, June through October. It's a great area to do hiking, fishing, motor boating, kayaking, picnicking, wildlife viewing, and more. Watercraft are one of the primary ways aquatic invasive species are introduced into waterways. No boats, float tubes or paddle craft from outside the Preserve are permitted. There's an "in-basin" fleet of watercraft available to the public at no charge. By providing a strictly in-basin fleet this risk is greatly reduced.

#38 GIVE THEM A HEADSTART...

Schaffer's High Sierra Camp is a children's summer camp (and now a family camp too!) with a focus on wilderness adventure activities. They offer archery, backpacking, a ropes challenge course, horseback riding, kayaking, mountain biking, rock climbing, white water rafting, and much, much more. A new adventure awaits.

MORE INFO: www.highsierracamp.com



Tamara Murphy



Photos by Mary Davey



SIERRA COUNTY EVENTS

SNOW SPORTS

Mary Davey

John Geiger



Mary Davey



Darby Hayes

Mary Davey

#34 WINE IN THE WOODS...
 Join us in Sierra City on September 30, 2023 for an afternoon of wonderful wines, hors d'oeuvres and live music. Contact 862-1151 for more info.



Mary Davey



#28 FRESH IS BEST...
 When it comes to choosing a Christmas tree for your home, you won't find a better selection than right here in the middle of the Tahoe National Forest (TNF). Get a permit to cut your very own tree or, let the Downieville Lions Club do the leg work for you, and get a tree at one of their fresh tree lots in Downieville and Sierra City. Available starting mid-November.

Mary Davey



#14 HIT THE ROAD...
 The Yuba River Scenic Byway is located in Sierra County and follows Highway 49, the "Mother Lode Highway"—a route rich with remnants of mining history. Time travel becomes reality as you travel this scenic byway through the historic towns of Sierra City and Downieville along the Yuba River.

Winter is a great time to explore the Lakes Basin Recreation Area. All over Sierra County winter trails for skiers, snowmobilers, and snowshoers wind through valleys and hills and around beautiful alpine lakes. Miles of groomed roads and trails offer excellent cross-country skiing and snowmobiling.

Buy them online at <http://ohv.parks.ca.gov/>

Bassetts Station at the intersection of Hwy 49 and Gold Lake Road is a favorite staging area for snowmobilers and cross-country skiers. It is complete with a general store, cafe, restrooms and gas station. Gold Lake Road is the main access route to many miles of trails. The trip to Graeagle in Plumas County, through the Lakes Basin from Bassetts, is a favorite among local snowmobilers. Yuba Pass Snow Park, 13 miles north east of Sierra City, accesses trails that reach the Little Truckee Summit staging area, Jackson Meadows reservoir and Bassetts staging area, traveling through the woods on forest service roads. Lunch Creek Trail is a cross-country-skiing-only trail. Tubing, sledding, snowshoeing, and snow camping round out the winter fun in this large snowpark facility. Snowpark permits are required.

Sierra Buttes Snowbusters snowmobile club holds monthly meetings in the winter and hosts numerous events through the season, such as group rides on weekends including a dinner ride to Sierraville. The annual Spaghetti Feed raises money for scholarships which are awarded to graduating seniors from Downieville High School and members' families each year.

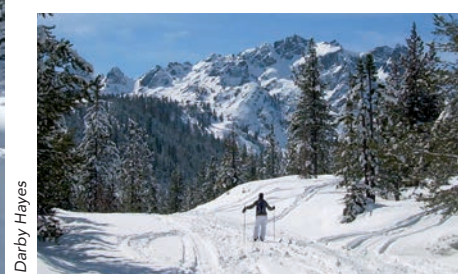
The Little Truckee Summit area located between Sierraville and Truckee on Hwy 89 provides many winter trails, restrooms, and plenty of parking. From here you can follow groomed trails up to the Gold Lakes Recreation Area via the Yuba Pass.

#39 BUILD A SNOWMAN...
 For many, Sierra County is a great day or weekend trip. Without the traffic and lines, you can have an enjoyable weekend in one of the most beautiful places in California—not just in the summer.

#46 GET YOUR CHILL ON...
 Winter is a great time to explore the wilderness of the Lakes Basin Recreation Area. Whether snowmobiling, backcountry skiing, cross country skiing, snowshoeing, or sledding is your passion, a winter wonderland of trails that wind through valleys, hills, and alpine lakes await.

MORE INFO: shoptomssnowmobile.com

There is also excellent cross-country skiing on Henness Pass Road east of Hwy 89, the Wheeler Loop traversing the Kyburz Flat area, an area where snowmobiles aren't allowed. The Treasure Mountain Loop in the Little Truckee Summit area provides groomed trails for both snowmobilers and cross-country skiers. Other groomed trails in this area include the Pass Creek Loop, which leads to Jackson Meadows Reservoir and the Prosser Creek Connection Trail, which travels from the Summit along Prosser Creek downhill into Nevada County, where it ends near Prosser Lake.



Mary Davey

Darby Hayes



Mary Davey



Mary Davey

Jonathan Kibrick

WILDFLOWERS

Mary Davey

Due to the elevation, Sierra County provides one of the longest seasons for wildflower viewing in California. In spring, dogwood blooms profusely in the forest and massive patches of monkey flowers invade the wet seeps of canyon walls. Scotch broom adds brilliant patches of yellow. Summer provides an abundance of flowers and in the fall the dogwood puts on a second display of fiery orange and deep pink.

When the snow melts, the Lakes Basin area abounds in a variety of wildflowers. Orange masses of lilies bloom in the wet creek drainages and wild azaleas are scattered about the hillsides. At the summit of Yuba Pass, magenta penstemon and lacy white yampa decorate the landscape. In the marshy areas, marigolds, elephant heads, corn lilies, and several species of monkey flowers flourish in the spring sun.

In Sierra Valley, fields of red, blue, and orange flowers flow with the breeze during springtime in large swaths of green. Along the waterways, many marshland plants and several species of buttercups paint a picture of color and serenity.



Photots by Mary Davey

Darby Hayes

WILD LIFE

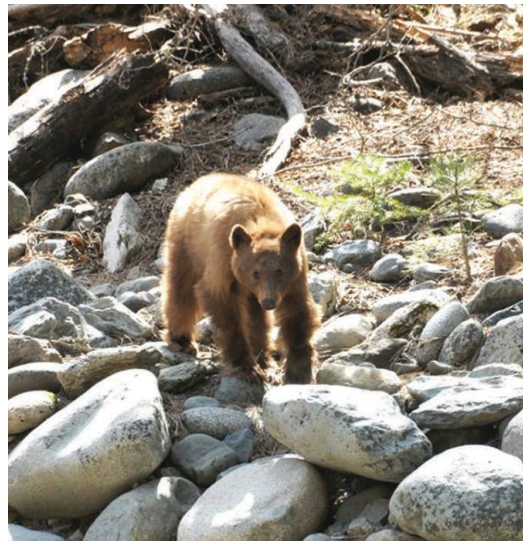
Darby Hayes

Sierra County is home to many mammals such as black bear, foxes, and raccoons. There are also mountain lions and coyotes present but not so visible. It's important to remember this is truly a wild area and to always be aware of your surroundings whether you're taking a walk along a trail or hanging out by the river.

Among other critters, there are plenty of rattlesnakes, so be careful when out hiking. Never put a hand over or step above an area that is not clearly visible. Rattle snakes are commonly found in rock crevices

and heavy brush. Be especially aware when you travel with a dog.

In the spring, the Downieville deer herd moves to the higher elevations to fawn. Sierra Valley, in addition to the ranch cattle, is also home to Nevada mule deer. Antelope Valley is an excellent place to observe deer fawning areas. If you see a lone fawn, please don't touch it. Its mother is nearby. The Smithneck Creek area off Smithneck Road travels through extensive aspen groves with scenes of beaver activity—dams, stick lodges, and beaver-logged timber.



Mary Davey

#37 SCHOOL'S NOW IN SESSION...
 The San Francisco State University's Sierra Nevada Field Campus is located just outside Sierra City. They provide a large number of summer classes open to the public. From flora to fauna, you can learn about fungi, birds, drawing, sketching, and painting, natural history, ecology, and much more.
MORE INFO: www.sierra.sfu.edu

OFF-ROAD / 4WD

Mary Davey

With so much of the county not developed (approx. 70% is National Forest) Sierra County is an off-road person's playground. Explore, but please be careful with our land and only drive on legal trails.

Just NW of Downieville, Chimney Rock, Fir Top, and Poker Flat are three great OHV, 4WD, and dirt bike routes. Chimney Rock goes by the Saddleback Lookout and is exceptional for bikes, as is the Poker Flat trail. A trail-rated SUV, some experience driving difficult back-country, a map, time to spare, and a picnic with you means you can visit the ghost towns of Poker Flat and Howland Flat, crossing Canyon Creek towards Lost Sierra's La Porte.

The Lafayette Ridge OHV Trail near Alleghany takes adventurers through heavy brush that gradually opens up to a stunning, panoramic view of the Middle Yuba River. Many of the off-road trails in this area were once the trails of miners, traders, and mule teams. Drive Henness Pass Road from Camptonville to Verdi. 4WD, a detailed map, compass, and dedicated map reader is strongly recommended! It links the southern part of the county from east to west with historical sites along the way.

In Sierra City and the Lakes Basin recreation area there are many off-road trails popular with 4WDs, including the Sierra Buttes trail which runs from the most scenic transfer station in California (Sierra City's), to the Sierra Buttes Lookout parking lot and then

on to Packer Saddle, traversing the southwestern face of the Buttes with breathtaking views. Don't miss the actual lookout, a short (if steep) hike from the parking lot. There is an amazing viewing platform that runs all around the lookout for 360° views. Not recommended for anyone with fear of heights. Don't forget your camera!

The Lakes Basin has numerous off-road vehicle or 4WD trails ranging from moderate to most difficult. The trails pass through a variety of terrain and offer fishing, wildlife viewing, and exceptional scenery. The area around Gold Lake is a favorite for ATVs and in the winter, snowmobilers.

In the Sierra Valley, The Bear Valley Loop OHV Trail near Sierraville is 18 miles of pure exhilaration and scenic beauty. The trail is open late spring to fall.

GOLD MINING

Tamara Murphy

Almost everywhere you turn in Sierra County you will find a rich history of gold discovery (even modern day gold discoveries). You can have your own gold adventure on any level here; whether it's visiting historic sites, finding your own gold on the river or staking your own gold claim.

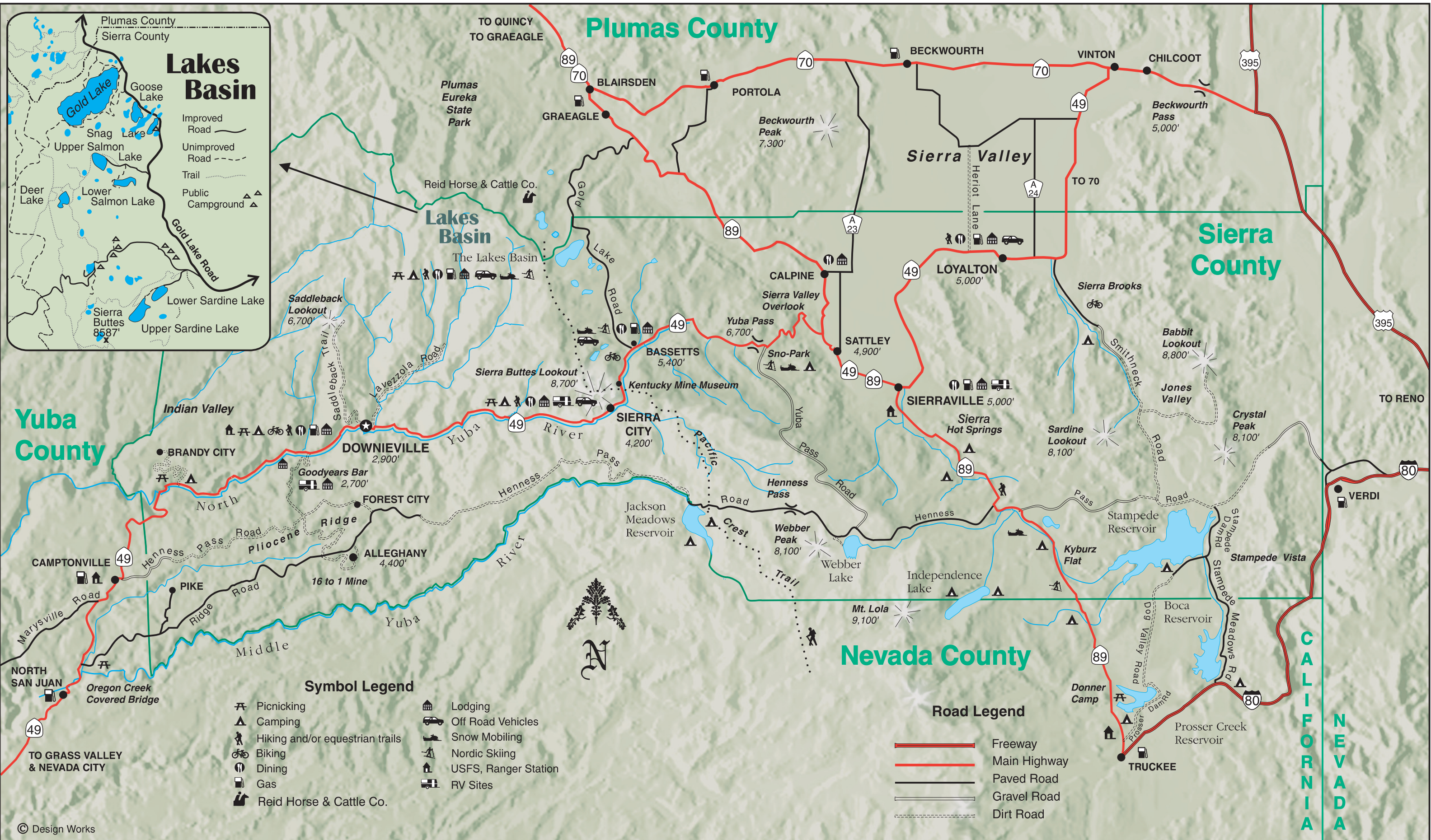
Sierra County is open to many different methods of gold recovery from gold panning, river sluicing, metal detecting, underwater sniping, dry washing, and much more. Camps and day use areas provide places to go recreational gold prospecting.

Make sure you are in a designated area for recreational gold prospecting and mining, and always respect posted mining claim signs. Remember to check with the local authorities and/or the Bureau of Land Management (BLM) before prospecting or mining anywhere in Sierra County to be sure that you are not on a private gold claim.

The Underground Gold Miners Museum in Alleghany and the Kentucky Mine Museum in Sierra City are local resources to help you on your mining adventure.

#11 SOUNDS OF A WORKING GOLD MINE...
 A visit to the Kentucky Mine and Museum (located on Hwy 49 near the town of Sierra City), is a unique opportunity for you and your family to step into the world of the gold seeking miners who worked the mines and built the towns that made California the Golden State. Open Memorial Day weekend through Labor Day.
MORE INFO: www.sierracountyhistory.org

#16 TRY YOUR LUCK...
 at gold panning. Almost everywhere you turn in Sierra County you will find a rich history of gold discovery. You can have your own gold adventure on any level here. Whether it's visiting historic sites, finding your own gold on the river, or staking your own claim. Remember to check with local authorities and/or the Bureau of Land Management before prospecting or mining anywhere to be sure you are not on a private gold claim. Explore the Original Sixteen to One Mine and Museum
MORE INFO: www.origsix.com



Yuba County

Plumas County

Sierra County

Nevada County

CALIFORNIA
NEVADA

- Symbol Legend**
- 🏕 Picnicking
 - 🏠 Lodging
 - 🏕 Camping
 - 🚙 Off Road Vehicles
 - 🚶 Hiking and/or equestrian trails
 - 🏂 Snow Mobiling
 - 🚲 Biking
 - 🎿 Nordic Skiing
 - 🍷 Dining
 - 🏠 USFS, Ranger Station
 - ⛽ Gas
 - 🚐 RV Sites
 - 👤 Reid Horse & Cattle Co.

- Road Legend**
- Freeway
 - Main Highway
 - Paved Road
 - Gravel Road
 - Dirt Road

© Design Works

SIERRA COUNTY, CA.

Sierra County Chamber of Commerce 1-800-200-4949

HIKING & BACKPACKING

Easy to extreme level hiking trails abound in Sierra County. Always bring a map and plenty of water!

In the Plicoene Ridge area, most of the country around the towns is quite rugged and undeveloped with few groomed trails, but the historic Henness Pass Road provides hiking for the adventurous.

West of Downieville, a fully accessible trail passes gently through 500 ft of terrain from the Fiddle Creek Campground to the North Yuba River, just off Hwy 49. The Saddleback Trail climbs up mountainous terrain to the Saddleback Lookout where spectacular views can be

seen and photographed. The Canyon Creek Trail provides level ground and a scenic path alongside the North Yuba as it makes its way towards Bullards Bar. You'll pass through an old miners camp at Shenanigan Flat. The River Trail, starting at the parking lot behind the courthouse in Downieville is an incredibly beautiful hike along the rushing river, with several easy-to-get-to swimming holes.

The Pacific Crest Trail (PCT) winds itself through Sierra County near Sierra City. It crosses Haypress Creek and then emerges at the North Yuba at Loves Falls, just a mile or so north east of Sierra City. Sierra City is a popular stop-over for

wearied PCT hikers, a great place to stock up on provisions, fatten up on burgers and ice cream, and get a comfortable night's sleep in a bed.

Loves Falls are spectacular and a must for Sierra City visitors as it's a nice and easy walk from Hwy 49 just east of town on a leaf-covered woody path.

The Wild Plum Loop Trail starts near the Wild Plum campground and meanders alongside Haypress Creek through riparian hardwood communities that provide a rich birding experience.

If you continue on the PCT northward

#20 FIND YOUR WILD SIDE...
Over 50 miles of the Pacific Crest Trail (PCT) pass through Sierra County. The trail's 2,663 miles run from the California/Mexico border to the Washington/-Canadian border. Grab your backpack and go!
MORE INFO: www.pcta.org/discover-thetrail

#43 TAKE A HIKE...
It's been said that you can't be in a bad mood when taking a hike in the forest. Easy to extreme hiking trails await you in Sierra County. Hikes in this region are what dreams are made of.

you are coming along the PCT from the south or north, or just parked your car at Packer Saddle, do not miss the Sierra Buttes Lookout. The hike there is steep and challenging, but well worth the effort. There is an amazing viewing platform that runs all around the lookout for 360° views. This is definitely not recommended for the faint of heart or anyone with fear of heights!

The Lakes Basin offers many options for nice shorter walks along lakes. Sand Pond Interpretive Trail shows the flora and fauna of a riparian habitat and is accessible to wheelchairs. It provides a wonderful experience for those who cannot hike the typical mountain trail.

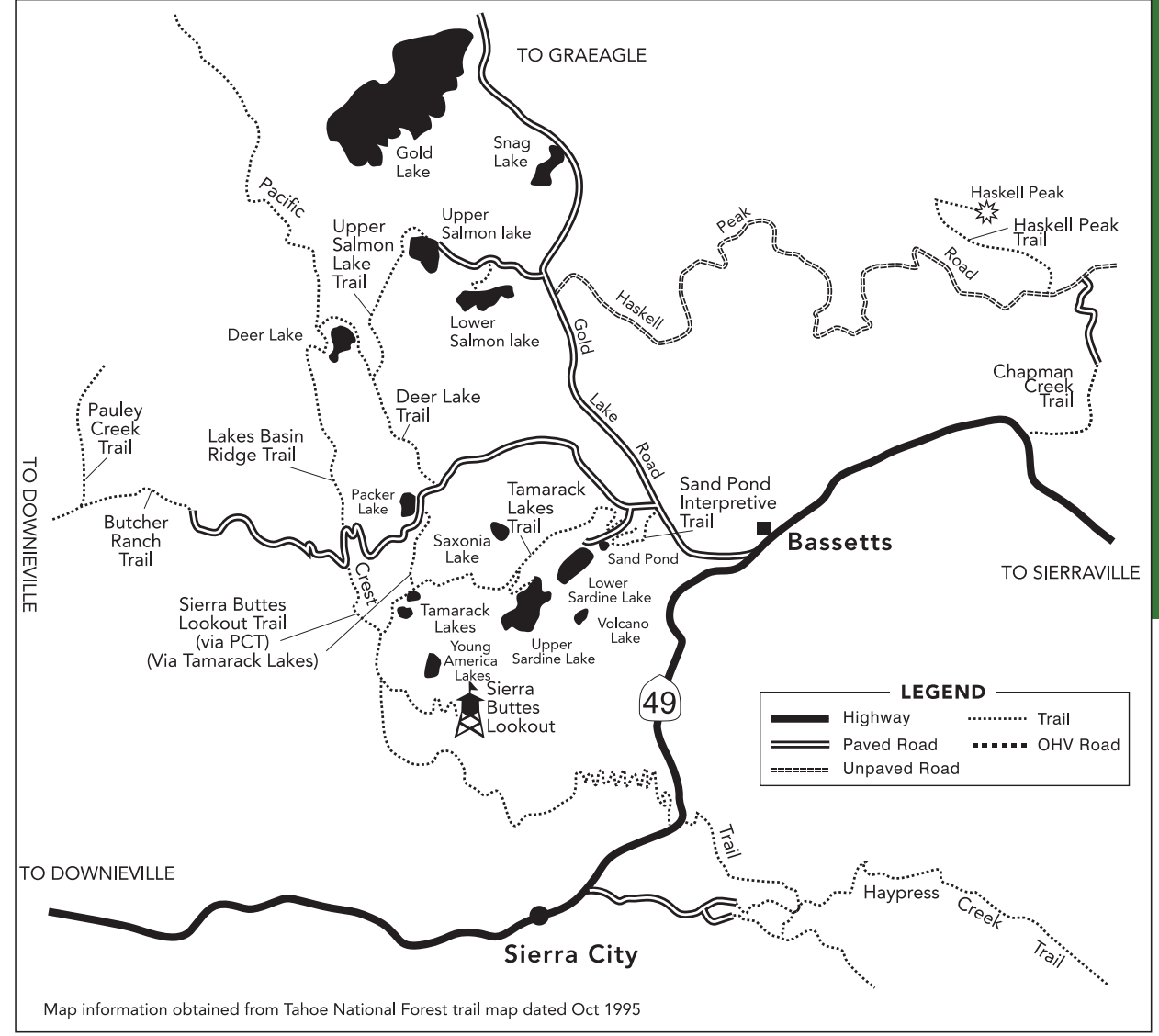
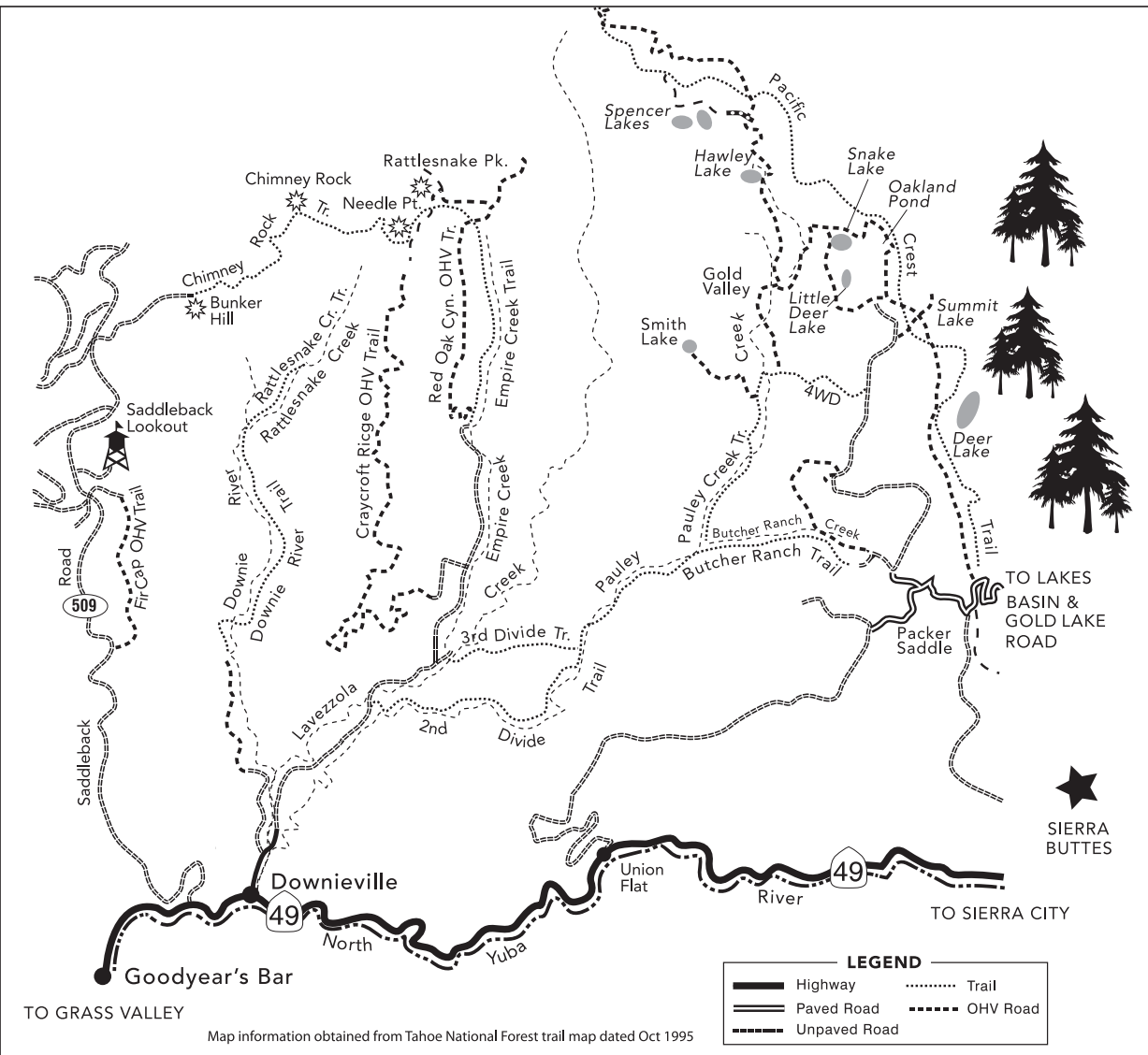
Trails in the Sierra Valley area range from easy walks to rigorous climbs through thick conifer forests. The Cottonwood Overlook Trail is light to moderately difficult and provides panoramic views of the valley in several places along

the trail. The Cottonwood Creek Botanical Trail uses trail markers and a corresponding brochure to identify and describe trees and other plants on this easy walk. Dedicated hikers can climb the steep Badenaugh Trail up to the Babbit Peak Lookout for an outstanding panoramic view of parts of eastern California and western Nevada. Mountain bikers and equestrians share this trail with hikers.

The Jackson Meadows Reservoir area features the Woodcamp Creek Interpretive Trail, which provides an educational and moderately difficult hike with 18 points of interest spelled out in a brochure. The Pacific Crest Trail can be accessed from the Jackson Meadow trail head. The Kyburz Flat interpretive area on Henness Pass Road east of Hwy 89 between Sierraville and Truckee explains the history of three different peoples who inhabited this beautiful mountain meadow starting 2,000 years ago.

as it crosses Hwy 49 near Loves Falls, it climbs in a series of switchbacks across the southwest face of the Sierra Buttes, right above Sierra City, providing a magnificent view. As you get closer to the top of the Sierra Buttes, the PCT provides an interesting trail detour, the Sierra Buttes Lookout Trail. Whether

RIVER CANYON TRAIL MAP



RIVER CANYON

ALLEGHANY

CASEY'S PLACE. 234 Main St. 287-9809

DOWNEVILLE

LA COCINA DE ORO. 322 Main St., 289-3584

SABRINA'S AT THE FORKS. 308 Main St., Restaurant, bar and deli, coffee and espresso, river gear rentals, 289-0155, www.theforksatdownieville.com. sabismith@hotmail.com, Facebook: Sabrina's At The Forks.

ST. CHARLES PLACE. 101 Commercial St. A great place to soak up small town entertainment in the local atmosphere while enjoying your favorite cocktail. Open all year. stcharlesplace.com; 289-3237

TWO RIVERS CAFE. 116 Main St. 289-3540

INDIAN VALLEY

INDIAN VALLEY OUTPOST RESORT. 4601 Hwy 49, Camptonville. 289-3349. www.campinyubariver.com; infiniteindianvalley@gmail.com; Camping resort on North Fork of the Yuba River. Restaurant, pub and store. Restaurant and pub open 8am-9pm May through October. Store open July 1 – September 4, 7 days a week.

SIERRA BUTTES

SIERRA CITY

RED MOOSE CAFE & INN. 224 Main St. 862-1024. Open year round serving Breakfast & Lunch. 8am-2pm, Seasonal – hours vary depending on time of year. Catering available. Rental rooms available. Email: EB570@gmail.com

SIERRA COUNTRY STORE. 213 Main St. Smack dab in the heart of town. Offers everything from hearty breakfast burritos and fresh deli sandwiches to mouth-watering cheeseburgers and pizzas. Stop by for all your needs; ATM, WiFi. See webcam on our website. Open all year. sierracountrystore.com; 862-1560

SIERRA PINES RESORT (formerly Herrington's Sierra Pines), 104 Main St., Fine

dining restaurant and bar open 7 days, May – October for breakfast and dinner. Patio dining available. From November – April we operate as a B&B, serving dinner to guests as needed and to the public on scheduled Saturdays. Check facebook and our website for updates to hours: www.sierrapinesresort.com; info@SierraPinesResort.com; or Facebook: SierraPinesResort. 530-862-1151.

SORRACCO'S SALOON. 203 Main St. The oldest building on main street (circa 1851). The John Sorracco Hotel was established in the 1880s. In 1949, Sorracco's grandson Buddy Zerga & Walter Loffmark reopened as the Zerloff Hotel which closed in 1990. The present owners re-opened the bar as Sorracco's Saloon in 2001. Enjoy fine wine, spirits and micro brews in the bar, on the patio or on the covered front porch. Open all year. Dog friendly. 862-1130

LAKES BASIN

BASSETTS

BASSETTS STATION. A historic business located at the gateway to the Lakes Basin Recreational Area, providing a general store, cafe, gas, diesel, propane and motel accommodations. bassettstation.com; info@bassettstation.com; 862-1297

THE LAKES

GOLD LAKE LODGE. 7000 Gold Lake Forest Highway. Rustic mountain lodge in the heart of the Lakes Basin with restaurant open to the public. Hearty meals. Breakfast is walk-in. Call for dinner reservations (seatings at 5:30pm and 7:30pm) 836-2350. Mid-June to mid-Sept. goldlakelodge.com

PACKER LAKE LODGE. 3901 Packer Lake Lodge Rd. 862-1221. www.packerlakelodge.com. packerlakelodge@gmail.com.

SARDINE LAKE RESORT. Fine dining in a beautiful lakeside setting. Filet Mignon, rack of lamb, seafood, chicken and a couple of nightly specials. Reservations requested. Dining room closed Mon & Tues. Open 8am-10pm Wednesday through Sunday and 8am-4pm Monday and Tuesday. sardine@sccn.net and Facebook: SardineLakeResort. Open mid-May to mid-October. sardinelakeresort.com; 862-1196

SIERRA VALLEY

LOYALTON

GOLDEN WEST SALOON. 711 Main St., 993-4467

THE DRIFTER'S TABLE, 820 Main St. Serving dinner using fresh local produce, seasonal fare, ever changing menu. Call for reservations. Open Friday-Sunday at 4pm. May through New Year's Eve. 993-4312. www.thedrifterstable.com; drifterstable@gmail.com.

TIMBER CAFE. 700 Main St.

WHITE'S SIERRA STATION. 508 Main St., 993-1212. Celebrating 100 years! Continuous family owned and operated since 1923. A convenience store open year round Monday-Saturday 6:00am – 6:00pm. Closed Sundays. We sell fuel (available 24 hours), tires, auto repair. A wonderful deli with hot and cold sandwiches, soda, beer, snacks, ice, hot & cold beverages, Leanin Tree cards, Blue Bunny ice cream. Headquarters for Jefferson swag – Sierra & Plumas Counties. www.whitessierrastation.com, wssi122@psln.com, Facebook: White'sSierraStation,Inc.

SIERRAVILLE

THE FARMHOUSE CAFE. 101 E. Main St.

LOS DOS HERMANOS. 101 Battelle St., 994-1058

SIERRA HOT SPRINGS. 521 Campbell Hot Springs Rd. A non-profit retreat and workshop center at the cusp of Sierra Valley. Offering day use, historic overnight accommodations, camping, massage and spa treatments & organic meals. Open all year. sierrahotspings.org; 994-3773

SIERRAVILLE SERVICE & COUNTRY STORE. 126 S. Lincoln St./Highway 89. Open all year. 994-3529

SMITHNECK FARMS ESPRESSO. 107 East Main St., 320-9907

PLIOCENE RIDGE

ALLEGHANY

UNDERGROUND GOLD MINERS MUSEUM. 356 Main St. Educational & fun, exhibits touch on local history, geology & gold mining, including tales of underground gold miners. Videos tell the history of hard rock mining & document recent history at the 16 to 1 Mine. The gift shop features gold laced quartz specimens and jewelry from the 16 to 1 Mine as well as souvenirs, books, maps & t-shirts. Open seasonally. Open Saturday-Sunday Noon-4pm Memorial Day-Labor Day and by appointment. Admission fee: \$2. Dog friendly. www.undergroundgold.com; 287-3330

RIVER CANYON

GOODYEARS BAR

GOODYEARS BAR MUSEUM. 525 Toll Bridge Rd. Displays, collects, preserves and interprets objects and materials pertinent to Sierra County History. Features exhibits about Native Americans, the Chinese Influence; the Old School House and Mining. Open weekends, July 6th-Labor Day weekend. 289-3297

DOWNEVILLE

DOWNEVILLE DAY SPA AT LA SIERRA BEAUTY BOUTIQUE. 309 Main St. Services for women, men & children. Hair cuts, coloring, highlights, perms. Retreat facials, spa manicures & pedicures, body waxing, airbrush tanning, massage. Bridal & special party service packages. Complete line of professional products for home care. Hair care, nail care, skin care, make-up, bath & body & great gifts. Gift Certificates available. Come relax! Open all year. downievilledayspa.com; 289-3504

DOWNEVILLE GROCERY. 101 Sunnyside Dr. "Best Grocery Store in Town." Swing in for those must have Grocery-Produce-Dairy-Beer-wine-Liquor-Ice-Propane items. Open 7 days a week, year round. 289-3596

DOWNEVILLE LIBRARY. Native Daughters Hall. 118 Commercial St., Open all year. Tues. 10am-2pm, Thurs. 12pm-4pm. 289-3544

DOWNEVILLE LIONS CLUB. A volunteer service organization promoting the welfare of organizations & members of our

community. Meets on 3rd Monday of each month. 289-3595 for info.

DOWNEVILLE MUSEUM. 330 Main St.. Open Fri. through Sun. 11am-4pm. Mon. through Thur. by appointment/docent availability. Contact hangman@jps.net, 289-3506.

DOWNEVILLE OUTFITTERS. 310 Main St., Mountain bike rentals and shuttles. Open 8am-5pm 7 days a week April-November. www.downievilleoutfitters.net. info@downievilleoutfitters.net. Facebook: downievilleoutfitters. 289-0155

FEATHER'S FLOWERS NURSERY GARDEN. 307 Main St. Open Wed-Sun 9am-4pm 289-3584

MICHELLE BURR CREATIONS.

Photography and hand-made creations. Monday-Friday 8am-5pm. 289-3301. mburrcreations@yahoo.com

SABRINA'S AT THE FORKS. 308 Main St. River Gear Rentals. Restaurant, bar and deli., coffee and espresso. 289-0155. www.forksatdownieville.com. sabismith@hotmail.com. Facebook: Sabrina's At the Forks

SIERRA COUNTY ARTS COUNCIL & THE YUBA THEATRE. The mission of the Sierra County Arts Council is to bring together community and art. Home of Sierra Turnpike Players, & offices of Sierra County Arts Council. Music, theatre, dance, school plays & film. The Banff Mountain Film Festival World Tour has three showings each April. Open all year. sierracountyartsCouncil.org; 289-9822

SIERRA HARDWARE & SPORTING GOODS. 305 Main St. General retail, hardware, paint & sporting goods. Hunting & fishing licenses. DFM Agent. Tackle, sporting & camping supplies. Plumbing & electrical. Open all year. Dog friendly. Summer – Monday -Saturday 9am-6pm; Sunday 9am-3pm. Winter: Tuesday – Saturday 9am-5:30pm. Closed Sunday and Monday. 289-3582.

SIERRA BUTTES TRAIL STEWARDSHIP.

The Sierra Buttes Trail Stewardship is committed to building and maintaining trails to be enjoyed for generations to come. Building sustainable recreation-based communities through stewardship, job creation, and world class events. Providing quality outdoor experiences through trail construction and maintenance. 530-283-2426. kyla@sierratrails.org

YUBA GALLERY. 208 Main St. The Yuba Gallery features locally inspired arts & crafts. Open Thurs-Sun 10am-4pm. 289-9822

YUBA THEATER-SIERRA COUNTY ARTS COUNCIL. 212 Main St. The Yuba Theatre features a variety of entertainment and programs throughout the year. 289-9822

INDIAN VALLEY

INDIAN VALLEY OUTPOST RESORT. 4601 Highway 49. Camptonville. 289-3349. www.campinyubariver.com, infiniteindianvalley@gmail.com. Outdoor activities throughout the summer season. Call or check website for details.

SIERRA BUTTES

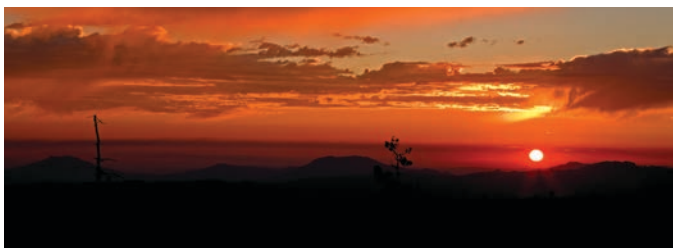
SIERRA CITY

HARMONY LODGE #164 F AND AM, 221 C Main St., Lunar lodge open Thursday after the Full Moon. Contact Mike Galan 289-3595 or michael.galan@sbcglobal.net for more information.

KENTUCKY MINE HISTORIC PARK & MUSEUM/SIERRA COUNTY HISTORICAL SOCIETY. Hwy 49, just east of Sierra City. Explore mining artifacts, a Chinese settler exhibit, stamp mill, photographs & more. Picnic facilities. Gift shop with prints, original art, native gold, artifacts & jewelry. Books on area history, geology & flora. Summer amphitheater concerts. Memorial Day-Labor Day, Open Daily during the season 10am-4pm. Weekends after Labor Day through mid-October. Tours of working stamp mill, gold mine & miners cabin 11am & 2pm. sierracountyhistory.org; museum@sierracountyhistory.org and the Facebook: Kentucky Mine and Museum. 862-1310.

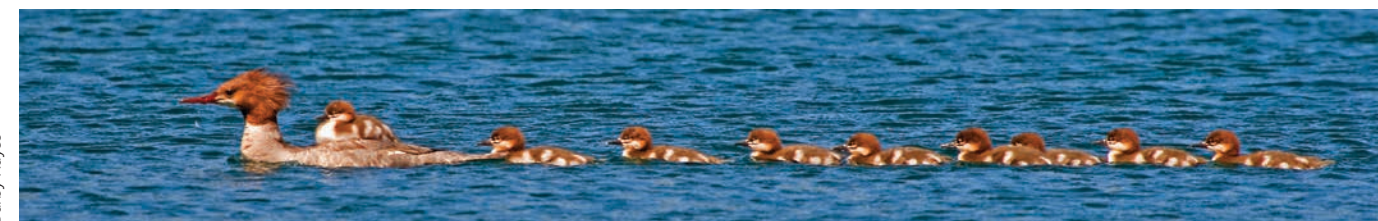
MUSIC AT THE MINE A summer concert series held at the Kentucky Mine Amphitheater during the months of May through September and underwritten by the Sierra County Historical Society. Contact Chris Stockdale 277-6408 or cstockrock@gmail.com. www.sierracountyhistory.org. Facebook: Music at the Mine.

SIERRA BUTTES SNOWBUSTERS. An organization dedicated to promoting and enjoying the sport of snowmobiling. Become a member and join in on the fun. Conditions permitting, we hold club runs



Darby Hayes

Darby Hayes



Darby Hayes

once a month during the winter, an annual holiday dinner, an ice fishing competition for the kids, and a lasagna feed to raise funds for scholarships. The scholarships are awarded to graduating seniors at Downieville High School and family members of the club. For memberships please call Sharon Grenier at 862-1577 for info.

SIERRA CITY LIBRARY. Main St. Open all year. Tues & Thurs 11:30–3:30. 862-0210

SIERRA CITY MERCANTILE. 221 Main St. Open Saturday and Sunday Memorial Day through mid-December. Peak season - Wednesday through Sunday - 10am-3pm. goldbluff2@gmail.com

SIERRA COUNTRY STORE. 213 Main St. Smack dab in the heart of town. Stop by for all your Grocery-Meats-Produce-Beer-Wine-Liquor-Camping-Fishing-Ice-Deli-Catering-Gifts and more-needs. ATM, WiFi, and up to the minute weather station available. See the webcam on our website. Open all year. sierracountrystore.com; 862-1560

SIERRA PINES RESORT TROUT POND. 104 Main St. Trout fishing available for all ages from 10am – 1pm daily. All supplies provided and we will clean and ice pack your catch to take home. 862-1151.

LAKES BASIN

BASSETTS

BASSETT'S STATION. 100 Gold Lake Road. 862-1297. www.bassettsstation.com. info@bassettsstation.com. Café, general store, motel, gasoline, diesel and LPG. Store open 8:00 AM to 6:00 PM, gas available 24 hours.

THE LAKES

SALMON LAKE LODGE RESORT. Summer resort, family-oriented, 10 tent cabins, 4 cabins, boat rentals. Open late May through mid-October. Dog friendly. www.salmonlakelodge.com. salmonlakereservations@gmail.com. 852-0874 (Message).

SARDINE LAKE RESORT. Open daily for boat rentals, tackle & bait, coffee, off-sale beer & cold drinks until 6pm. Mid-May to mid-Oct. sardinelakeresort.com; 862-1196

YUBA PASS

SHAFFER'S HIGH SIERRA CAMP. 38782 State Highway 49. Kids and teens thrive at our overnight wilderness adventure camp program. Accredited for over 20 years, your child will gain confidence, build social skills, make friends and have fun all while being nurtured by mature, caring adults. Open June to August 7 days a week. 415-897-0316. www.highsierracamp.com. lisa@highsierracamp.com.

SIERRA VALLEY

CALPINE

HARVEY FARMS. 916-217-8220. www.annagotwool.com

"NEIGHBORS" MUSICIANS FOR HIRE, JAN DRUMMOND & ART FRANCO. P.O. Box 37, Calpine, CA 96124, 994-3649 or 994-3669 jndrummond123@gmail.com

PLUMAS-SIERRA CATTLEWOMEN. P. O. Box 166, Calpine 96124, (530) 320-0764. A connection of women interested in promoting agriculture in the classroom and beef in our communities. www.plumassieracattlewomen.org

CHILCOOT

GOODWINS GENERAL STORE. 94139 Highway 70, Chilcoot, CA 96105, 993-4683

KJL FASTENERS. 94601 State Route 70, Chilcoot, CA 96105, 530-993-6800, ray@kjlfast.com

LOYALTON

EAST SIERRA VALLEY CHAMBER OF COMMERCE. P.O. Box 366, Loyalton 96118. Sponsors local businesses and encourages visitors to our area with events. info@eastsierravalleychamber.com; www.eastsierravalleychamber.com

HAIR FAIRE. RANDI DURNEY, 703 Main St. 993-4678

LEONARD'S MARKET, 606 Main St., 993-4397

LOMBARDI MERCANTILE. 402 4th St. 519-2704

LOYALTON LIBRARY. 511 Main St., Open Wed–Fri, 1pm–5pm. 993-1105

LOYALTON THRIFT STORE, "LOYALTON'S MACY'S". City Hall Building. Open Tuesday–Friday, 10am–2pm. 993-4770 for info

MILTON GOTTARDI MUSEUM. 605 School St. Right off Hwy 49 behind the Loyalton Pharmacy building, open Memorial Day weekend. Open by appointment only during winter. 993-4012 or 993-6750

MOUNTAIN FEATHER MASSAGE. LOLA GARZA, P.O. Box 723, Loyalton, CA 96118, 993-4852, lolaegarza@gmail.com

MOUNTAIN GARDENS. Kaytee Puckett. 251-3546. www.mtgardensyardscapes.com

MUSICA SIERRA. www.musicasierra.org

SIERRA SUNRISE MASSAGE. 411 2nd St., Loyalton, CA. Leanna Glennon, 448-2287

SIERRA VALLEY EVENT CENTER & SKATEBOARD PARK. Horseback riding, off-road vehicles, hiking, fishing and hunting Call 993-6750 for info

SIERRA VALLEY HOME CENTER. KIM FOLCHI, 411 Main St., 993-4331, fax 993-4094

BETTY THATCHER, ARTIST. P.O. Box 944, Loyalton, CA 96118, 993-1707

WHITE'S SIERRA STATION. 508 Main St. Celebrating 100 years! Mechanic shop, 3 tire deliveries per week. Gas - regular and unleaded and diesel. Convenience store and deli. Open Year Round. Monday-Friday 6am–6pm, Saturday 6am–5pm. Closed Sunday. 993-1212. www.whitesierrastation.com. wssil22@psln.com. Facebook: White's Sierra Station, Inc.

TRUCKEE

TIP PRINTING & GRAPHICS. JOEL GRESSEL, 12177 Business Park Dr., Suite 9, Truckee, CA 96161, 587-3551, 913-9365, fax 587-7926, joel@printtip.com

QUINCY

PLUMAS-SIERRA COUNTY FAIR, 62 acre Event Center featuring the annual Plumas-Sierra County Fair. This year's fair runs from July 28-31, 2022. 204 Fairground Drive, Quincy, 283-6272. www.plumas-sierracountyfair.net email: johnstefanic@countyofplumas.com

SACRAMENTO

CAPITAL GRAPHICS, INC. 2920-36th St., Sacramento, CA 95817, Open Monday-Friday 8:00 am - 5:00 pm. Provider of printed products and advertising specialty products. (916) 455-2777. www.capgraph.com. seldridge@capgraph.com.

SATTLEY

COUNTRY CLASS COLLECTIBLES. Corner of Highways 49 & 89 and A–23 (Sattley Junction), 394-0615 or (513) 309-6369. A collectibles store, selling Indian (Native American) art and items, jewelry, stained glass, minerals and western items. Located in the historic Sattley Store. Open May–October. Thurs–Monday 10am–6pm (open on holidays during this season). Closed Tues & Wed. Fri–Sun open 9am–6pm. Find us on google business and google maps under Sattley Cash Store.

SIERRAVILLE

SIERRA HOT SPRINGS. 521 Campbell Hot Springs Rd. A retreat & workshop center at the cusp of Sierra Valley. Here, it is impossible to resist the overwhelming sense of tranquility. The natural spring water is as smooth as silk & the pools are a true experience. Offering day use, historic overnight accommodations, camping, massage & spa treatments & organic meals. Open year round. info@sierrahotspots.org, sierrahotspots.org; 994-3773

SIERRA VALLEY FEED & RANCH SUPPLY. 101 Main St. Feed supply store, fencing, vaccination for cattle, etc., clothing, gifts, bags, Twisted X, jewelry, etc. Open Year round. Summer hours: Monday-Friday 9am–5pm and Saturday 9am–3pm. Winter hours: Tuesday-Friday 9am–5pm and Saturday 9am–3pm. 994-3091. sproen@aol.com. Facebook: Sierra Valley Feed & Ranch Supply.

SIERRA VALLEY YAKS. A small family-owned ranch in the Sierra Valley. We offer domesticated yak meat and fiber, and are committed to producing a high-quality grass-fed product in a sustainable and responsible manner. P.O. Box 300, Calpine, CA 96124, Appointment On Request, (805) 403-7800 or info@sierravalleyyaks.com. www.sierravalleyyaks.com

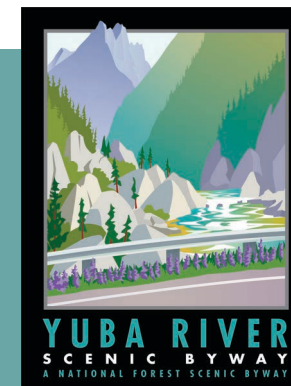
SIERRAVILLE BARBER SHOP. Main Street. Ron Tucker. 775-846-2200

SIERRAVILLE SERVICE & COUNTRY STORE. 126 S. Lincoln St. 994-3529. Summer hours: Monday-Friday 6am–7pm. Saturday-Sunday 7am–7pm. Winter hours: Monday-Friday 6am–6pm. Saturday-Sunday 8am–6pm

TOM'S SNOWMOBILE & SERVICE. 630 South Lincoln St, Sierraville, 994-3522, Recreational, retail and service. Ski-doo sales, parts, accessories; Fox Racing Shox, suspensions. Making faster smoother. Open August to May; www.shoptomssnowmobile.com, info@tomssnowmobile.com



Mary Davey



POSTERS NOW AVAILABLE!

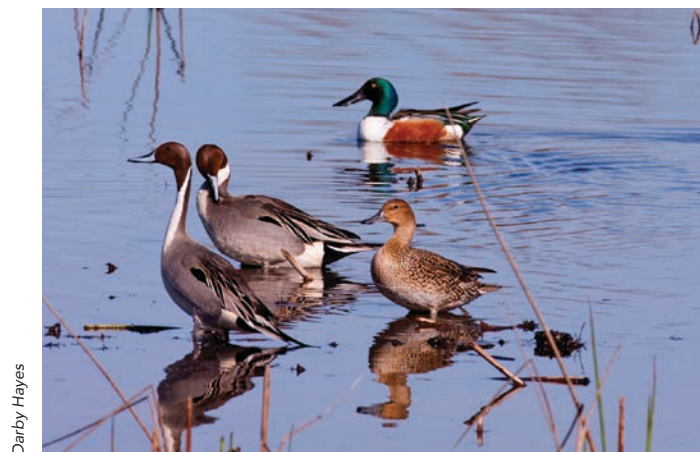
As a thank you for your \$15 donation to the Sierra County Chamber of Commerce you will receive one poster of your choice. With a \$80 donation, you will receive the set of all 9 posters. Each poster is 11x14

Please send us a letter with your donation, which poster you'd prefer if not the whole set, and include your name and mailing address and we'll send you a poster or poster set as a thank you.

Sierra County Chamber of Commerce • PO Box 436 • Sierra City, CA 96125



David Keyes



Darby Hayes



RIVER CANYON

DOWNIEVILLE

CARRIAGE HOUSE INN, 110 Commercial St., 289-3573; 10 room boutique multi-sport hotel in historic downtown Downieville. Open all year. Dog friendly. www.downievillecarriagehouse.com. sonya@downievillecarriagehouse.com. Facebook: Downieville Carriage House.

DOWNIEVILLE LOFT, 208 Main St. 415-218-3469

DOWNIEVILLE RIVER INN RESORT, 121 River St. On the Yuba River, just across the Court House Bridge, still within walking distance to the shops and restaurants. A variety of rooms and cottages, some with kitchens. Bed & Breakfast services, a sauna, heated swimming pool, picnic area and BBQ's, WiFi and in-room movies. Grounds large enough for family reunions and large events. Open all year. Dog friendly. 289-3308. www.downievilleinn.com. reservations@downievilleinn.com. Facebook: Downieville River Inn.

RIVERSIDE MOUNTAIN LODGE, 206 Commercial St. 289-1000. Sonya@RiversideMtnLodge.com

THE LURE. Reopening in Fall 2023 as The Yuba Hub! 100 Lure Bridge Lane. 16 Cabins and Camping Cabins situated along the North Yuba River. We are an adventure resort where families and friends can strengthen their connection with the outdoors. Whether you love hiking, fishing, mountain biking, four wheeling, rock climbing, dirt bikes or just relaxing along the banks of the beautiful North Yuba River. The Yuba Hub welcomes everyone with a passion for getting outside. Open all year. Dog friendly. 289-3465. www.lureresort.com. hello@lureresort.com Facebook: Lure Resort.

A LOCAL BUSINESS? WANT TO BE INCLUDED IN THE VISITORS GUIDE?

JOIN THE SIERRA COUNTY CHAMBER OF COMMERCE

Join our community of local business owners and organizations. We work together to promote our county as well as make it the best place it can be to have a business. Sign up, renew or download an application online at www.sierracountychamber.com
For applications contact Sierra County Chamber at 1-800-200-4949 or email info@sierracountychamber.com.

WILLOUGHBY'S ON THE RIVER, 171 River St., Vacation Rental. April-Thanksgiving. willoughbysriver.com. dallasps1@cox.net. 602-253-6562

INDIAN VALLEY

INDIAN VALLEY OUTPOST RESORT, 4601 Hwy 49, Camptonville. 289-3349. infiniteindianvalley@gmail.com. IVO Resort is a cozy Mom & Pop campground on the North Fork of the Yuba River on Highway 49. We have a 5 star group cabin creekside which sleeps 11 guests. Four RV hook ups. Glamour camping is fun in our fully furnished teepees. We have a Restaurant (open weekends), store & pub. Free outdoor movies on Friday and Saturday nights. Reservations are made online at www.campingyubariver.com.

SIERRA BUTTES

SIERRA CITY

BUTTES RESORT, 230 Main st. Vacations are expensive, why take a chance? Tastefully appointed cabins, fully equipped with kitchens & unparalleled views of the Yuba River. Best rates in Sierra City. Open all year. www.buttresort.com; 862-1170

MY SISTERS COTTAGE, 207 Main St. 862-1505. Open June-October. Vacation rental. Renovated motor lodge . WiFi. 4 rooms, queen bed, kitchenette, coffee bar, showers, private garden area. No pets. mysisterscottage.com. mysisterscottage@yahoo.com

RED MOOSE CAFÉ & INN, 224 Main St. 862-1024. Open 8:00am-2:00pm serving breakfast and lunch. Lodging and rental rooms. Catering available. Seasonal – varies depending on time of year. eb570@gmail.com Facebook: Red Moose Café.

SIERRA CHALET VACATION CABIN, 113 Main St. 862-1193. A year-round A-frame chalet vacation rental where friends and family can gather to enjoy vacation time in Sierra City, CA

SIERRA CITY HOUSE, 126 Butte St. 2 blocks from center of town, this private house on a 1 acre lot has a small brook that runs year-round past a large hardwood deck. 3 Bdr & 1.5 Ba. Sleeps 6 to 8 comfortably with 3 queen & 2 twin beds. Sounds of the creek in every room. Back yard patio with BBQ. WiFi. Available all year. Dog friendly. sierravacation.com; 707-338-6901

SIERRA PINES RESORT Lodge and Restaurant. 104 Main St. 530-862-1151. 800-682-9848. Open 7 days, May – October and operates as a Bed & Breakfast November

– April. 22 room lodge and fine dining restaurant. Many rooms with river views, some with kitchens and a renovated trailer with waterfall view. Pet friendly. Large meadow with BBQ and firepit. Private river access. Trout pond! www.sierrapinesresort.com. info@sierrapinesresort.com. Facebook: SierraPinesResort.

SIERRA SKIES RV PARK. On the river in Sierra City with views of the Sierra Buttes & private access to the river. All sites are full hook-ups. Daily, weekly & monthly rates. 29 units. Year-round storage units. Dog friendly. sierraskiesrvpark.com; 862-1166

YUBA RIVER INN. Located on 25 acres of accessible river frontage, the Yuba River Inn offers well appointed accommodations in 1 and 2 bedroom log cabin units, most with fully equipped kitchens. Relax and enjoy the natural beauty and rushing sounds of the Yuba River from the privacy of your cabin or from our large deck overlooking the river. Enjoy the private river frontage exclusively for our guests. 862-1122 or www.yubariverinn.com for info.

LAKES BASIN

BASSETTS

BASSETTS STATION, 100 Gold Lake Rd. The Motel has three housekeeping units each with private entrances and full functional kitchens. Conveniently located just a short walk or drive to hiking, fishing, bird-watching or any adventure that you would like to take on. BBQ, kitchen units available, TV, patio/balcony/deck, pet friendly, river access. General store, café, gas, diesel and propane. Store open 8:00 AM to 6:00 PM, gas available 24 hours. 862-1297. [www.bassettsstation.com](http://bassettsstation.com). info@bassettsstation.com

THE LAKES

GOLD LAKE LODGE, 7000 Gold Lake Forest Highway. Rustic mountain lodge with 12 cabins located in the heart of the Lakes Basin. Hearty meals included. Open mid-June to mid-September. \$100 to \$200 a night. goldlakelodge.com; 836-2350

PACKER LAKE LODGE, 3901 Packer Lake Lodge Rd. Open Memorial Day weekend through Columbus Day weekend. 862-1221. packerlakelodge.com. packerlakelodge@gmail.com.

SALMON LAKE LODGE RESORT. Call for cabin reservations. Rowboat rentals \$40/day, cash only, at lake no reservations needed. Open late May to mid-Oct. Dog friendly. 852-0874. www.salmonlakelodge.com, salmonlakereservations@gmail.com

SARDINE LAKE RESORT. A small, family-run resort, since 1941. On Lower Sardine Lake, at the base of the Sierra Buttes. 9 housekeeping cabins. Restaurant closed Mon & Tues. Cabins generally rent by the week, Sat. – Sat. Mid-May to mid-October Boats, fishing. sardinelakeresort.com; sardine@sccn.net. 862-1196

SIERRA VALLEY

LOYALTON

THE GILDED DRIFTER INN, 820 Main St., A quiet place in a beautiful place. The Gilded Drifter is a 120 year old building lovingly restored for vacationers in 2017. The hotel offers 6 guest rooms including private and group suites with options for private and shared bath starting at \$65/night. All guests share a full kitchen, library/dining room and the summerhouse and gardens. Open all year. 428-5015. www.gildeddrifterinn.com. gildeddrifter@gmail.com

GOLDEN WEST, 711 Main S. 993-4467

TOP STORY B&B, 413 Beckwith St. Loyalton, CA 775-722-8776

SIERRAVILLE

CONSTELLATION CREEK, 622 Old Truckee Road, Sierraville, CA. Newly renovated creekside cabins in the heart of the Sierras. Open Year Round. Check in, switch off, tune into the sound of the babbling creek and look up at Mother Nature. Visit www.constellationcreek.com or call 323-767-4877 to plan your stay. hello@constellationcreek.com

SIERRA HOT SPRINGS/GLOBE HOTEL. A non-profit retreat & workshop center at the cusp of Sierra Valley. Here, it is impossible to resist the overwhelming sense of tranquility. Offering day use, historic overnight accommodations, camping, massage & spa treatments & organic meals. Open year round. info@sierrahotspots.org, www.sierrahotspots.org; 994-3773



Mary Davey

PHOTO CREDITS

This visitors guide, chamber website and our Sierra County Fair Exhibit would not be possible without the generous donations of photos by many incredible photographers. Individual photo credits accompany the pictures.

If you like their photos presented in this Guide or on our website, prints are available locally in galleries and stores.

Mary Davey's photographs can be customized for your logos, cards, and fine art. Framed art available for sale at the Yuba Gallery in Downieville. Also check photos on the facebook page "As the Yuba Flows" or contact Mary at marydaveyphoto@gmail.com or 862-1193 for more info.

DOWNIEVILLE COMMUNITY HALL RENTAL

Space available for your special events needs. Meetings, dances, parties, weddings, etc. Table and chairs included in the rental; kitchen area usage is an extra charge. For further information and rental availability, contact Mindy Strine at 530-955-5710. downievillecommunityhall@gmail.com

SIERRA CITY COMMUNITY HALL RENTAL

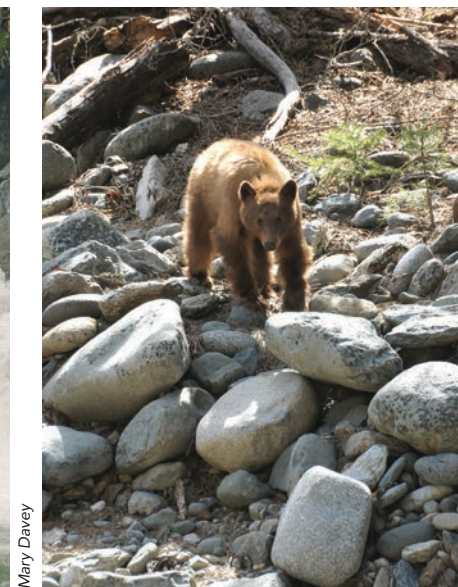
The Sierra City Community Hall is a log cabin style building built in the 40s by local residents. It has a full kitchen, a stage, movie screen and three bathrooms. The Community Hall seats 120 people for dinners with tables and chairs available. The hall's rustic style provides a warm environment for weddings, parties, dances and business meetings. If interested in renting the building, please call Mary Jungi at 530-862-1580



Darbey Hayes



Darbey Hayes



Mary Davey

FOR MORE INFORMATION ABOUT EVENTS, WHERE TO PLAY & STAY OR TO LIVE & WORK IN SIERRA COUNTY, SEE WWW.SIERRACOUNTYCHAMBER.COM

CONSTRUCTION

BUCK'S APPLIANCE, PARTS & SERVICE. 993-4265, cell 249-0191

JAQUEZ CUSTOM CRAFT. RUDY JAQUEZ. 993-1336

RANGE OF LIGHT CONSTRUCTION. BOB & PAM MACEY. P.O. Box 23, Loyalton, CA 96118, 993-4337, bobmacey@yahoo.com

DAWSON WOOD INTERIORS. Sierraville, CA 96126. 563-8029, md@dawsonwoodinteriors.com

MCCORMACK CONSTRUCTION. BRENDAN MCCORMICK. Sierraville, CA 96126, 994-3812, mccormackgreen@gmail.com

SCOTT R. BURR CONSTRUCTION. P.O. Box 321, Downieville 95936. 289-3301. burrconstruction@yahoo.com. Building and re-model Contractor.

EVENT RENTALS

CITY OF LOYALTON AUDITORIUM, 603 School St. Loyalton, CA 530-993-6750

DOWNIEVILLE COMMUNITY HALL. 322 Main St., Downieville Rental for events & parties. downievillecommunityhall@gmail.com 955-5710

HARVEY RANCH. 6780 Harvey Ranch Rd. By appointment. 916-217-8220. www.harveyranch.com. harveyranchcalpine@gmail.com. Working ranch venue for all occasions.

SIERRA CITY COMMUNITY HALL. Rental. Open all year. Reserve your event online at sierracitycommunityhall.com or call 862-1580

SIERRA VALLEY EVENT CENTER. Contact City of Loyalton. 993-6750

SIERRA VALLEY GRANGE HALL. PAM OLIVIERI/RICH MOORE. 92202 Highway 70, Vinton, CA 96135, (831) 345-9840, fax 993-1181, svgcbpoetry@yahoo.com

SIERRAVILLE SCHOOL & COMMUNITY CENTER, Rental Facility for Parties & Events, 103 Lincoln St., Sierraville. Miriam Dines 289-3201

FINANCE

ATM Available - Main Street, Loyalton (next to Leonard's Market) and Sierra Country Store in Sierra City.

LINDA BEESON INCOME TAX & BOOKKEEPING SERVICES. 272-3239, lbeesonrust@yahoo.com

WELLS FARGO BANK. ATM Only located next to Sierra Hardware on Main Street. Downieville.

PLUMAS BANK. Truckee 96161 Portola 96122. 832-4405, Fax: 832-0621

GAS

BASSETTS STATION. 100 Gold Lake Rd. A historic business located at the gateway to the Lakes Basin Recreational Area, providing a general store, gas & propane. Store open 8:00 AM to 6:00 PM, gas available 24 hours. bassettstation.com; 862-1297

SIERRAVILLE SERVICE STATION & COUNTRY STORE. 126 S. Lincoln St, Sierraville. 994-3529. Summer hours: Monday-Friday 6am-7pm. Saturday-Sunday 7am-7pm. Winter hours: Monday-Friday 6am-6pm. Saturday-Sunday 7am-7pm. Open all Year.

WHITE'S SIERRA STATION. 508 Main St., Loyalton, 993-1212, www.whitesierrastation.com Gas pumps open 24/7, Auto repair; tire sales

INSURANCE

FLANIGAN-LEAVITT INSURANCE AGENCY. 400 Main St. Quincy. 283-1112. Established in 1883. Independent insurance agency offering all lines of insurance, personal or commercial products and services. Additional locations in Susanville and Reno, NV. www.flaniganleavitt.com. mike-flanigan@leavitt.com.

LSI INSURANCE, 411 Second St, Loyalton, 832-4477, Fax: 429-4018

LEGAL

SANDRA GROVEN, DISTRICT ATTORNEY. Sierra County, 289-3269

C. INGRID LARSON, ATTORNEY AT LAW. PO Box 564, Downieville CA 95936, 289-3654. cingridlarson@gmail.com

MEDICAL & DENTAL

EASTERN PLUMAS HEALTH CARE. 703 Main St. Loyalton, CA. Clinic- 993-1231, Skilled Nursing- 993-1225

JASON BALDWIN, D.D.S., 703 Main St., Loyalton, 993-4728

JON PEEK, DVM. Veterinarian, Ret. 524-9911

SIERRA FRONTIER MEDICAL RESOURCES, SFMR helps fund and support primary, urgent, and emergency medical care for residents and visitors in western Sierra County. You can help maintain these vital services by making a tax-deductible donation to our 501(c)(3) non-profit corporation. Please send your contributions to P.O. Box 393, Downieville, CA 95936 www.sierrafrontier.org

WESTERN SIERRA DENTAL CLINIC. 17 Front St., Downieville. 289-3199

WESTERN SIERRA MEDICAL CLINIC. 209 Nevada St., Downieville. Open Monday-Thursday 8am-5pm. On call after hours. Comprehensive medical and dental services with a focus on Wellness Care and Chronic Disease Management. Medical - 289-3298; Dental - 289-3199; wsmcmcd.org

MISCELLANEOUS

SIERRA COUNTY LAND TRUST. Goal: preserve environmental & recreational assets & important open space areas for public use. Funded by grants & private donations. Focus on the Sierra Buttes and the Lakes Basin. The Land Trust owns 1525 acres of land for public use including Young America Lake, Volcano Lake, frontage on Upper and Lower Sardine Lakes, parts of Packer Saddle and the Lookout trail to the Sierra Buttes, the start of the Downieville Downhill trail and a large expanse of the face of the Buttes. sierracountylandtrust.org; 990-8043

SIERRA VALLEY SR. APARTMENTS. 100 Hill St., Loyalton. (530) 993-4307, fax 993-4308

SIERRA VALLEY YAKS. Family-owned ranch in Sierra Valley. We offer domesticated yak meat and fiber, and produce a high-quality grass-fed product in a sustainable and responsible manner. P.O. Box 300, Calpine, CA 96124, (805) 403-7800 or info@sierravalleyyaks.com. www.sierravalleyyaks.com

TOP STORY HOUSE KEEPING, Yard Maintenance & Window Service. 775-722-8776

NEWS

SIERRA BOOSTER, SIERRA COUNTY'S PICTORIAL NEWSPAPER. PO Box 8, Loyalton, 96118. 993-4379; fax 844-272-8583; jrbuck@psln.com; sierrabooster.com

MOUNTAIN MESSENGER. 313 Main St., P.O. Drawer A, Downieville, 289-3262 info@themountainmessenger.org

REAL ESTATE & NOTARY

Rebecca Mooers. Remax Gold. Specializing in Downieville, Sierra City and Nevada County properties. 224 Main St., Sierra City. 277-6885. www.rebeccamooers.com, rebecca.mooers6@gmail.com, Facebook: RebeccaMooers, Realtor Re/Max Gold

ANOTARYNOW.COM. All Notary services including mobile services and office appointments to avoid travel fees. 20 years experience. Copy – scan – General Administrative services, too. On call mobile notary services. Monday-Sunday including holidays. Office hours by appointment Bonded & insured. (Sierra, Plumas, East Placer, Nevada & Lassen County). Call or text for quickest response. 320-0764.

CENTURY 21 TAHOE NORTH REALTORS. AMBER DONNELLY. P.O. Box 271, Loyalton, CA 96118, 410-9397, amberjdonnelly@yahoo.com

DICKSON REALTY. Bonnie Jessee, 411 2nd St. Loyalton, CA 530-412-3984 bjessee@dicksonrealty.com

MARLENE BOGGS, CALIFORNIA OUTDOOR PROPERTIES. 412-2897, marleneboggs@gmail.com CaliforniaOutdoorProperties.com LandLeader.com

RE/MAX SUCCESS. Renee Vasnaik. 221B Main St. Sierra City. 805-471-4254. Located in the historic Masonic Building. Serving clients in the greater Sierra City area, Downieville and Greene Acres, representing both buyers and sellers. Member of the Plumas Association of Realtors, CAR & NAR. Licensed Real Estate Broker. Open Year Round by Appointment. www.rvasnaik.com. remax.com. rvasnaik@remax.net.

SENIOR SERVICES

GOLDEN RAYS TRANSPORATION. Downieville. 798-8555

LOYALTON SENIOR CENTER. 301 First St., Loyalton. Lunch Mon-Fri at Noon. Open all year. Reservations 993-4770

WESTERN SIERRA COUNTY SENIOR CENTER. Downieville. Lunch & commodities. Open all year. 289-3250

STORAGE

SIERRA SKIES STORAGE. Sierra City. Storage units. Open all year. sierraskiesrvpark.com; 862-1166

UTILITIES & WATER

DOWNIEVILLE PUBLIC UTILITY DISTRICT. P.O. Box 444, Downieville. 289-2774 OR 289-3370

LIBERTY UTILITIES. 701 National Ave., Tahoe Vista, CA 96148, 800-782-2506. **PG&E.** Gas & electric svcs. www.pge.com.

PLUMAS-SIERRA RURAL ELECTRIC COOPERATIVE & TELECOMMUNICATIONS. 73233 State Route 70, Portola, CA 96122. 832-4261. Plumas-Sierra REC & its subsidiary provide Electricity, Internet and Broadband services with a high level of reliability for fair and reasonable costs. Office hours: Monday-Friday 8am-5pm. Open all year. www.psrec.coop.

R.R. LEWIS WATER COMPANY. 855-RR-LEWIS.

SIERRA CITY WATERWORKS, INC. Water serving company. Open all year. 273-6447.

WORKFORCE

ALLIANCE FOR WORKFORCE DEVELOPMENT. 305 S. Lincoln St., Sierraville, CA 96126, 994-3349, www.aworkforce.org

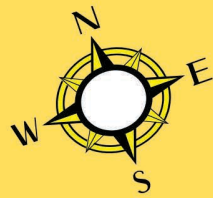


SIERRA FRONTIER MEDICAL RESOURCES, INC.

Supporting primary, urgent, and emergency medical services for residents and visitors in western Sierra County since 2014.

SFMR is a 501(c)(3) non-profit corporation. Contributions are tax-deductible.

PLEASE SEND DONATIONS TO:
P.O. Box 393
Downieville, CA 95936
www.sierrafrontier.org



Welcome to Sierra County California!

Familiarizing yourself with some of the unique Public Health & Medical Emergency information in our rural environment will maximize your safety and enjoyment while skiing, camping, hiking, biking, relaxing and playing in the Sierras.

As remote and sparsely populated as Sierra County is, we have a great volunteer base. Volunteer Fire Departments are located in Alleghany, Pike, Downieville, Sierra City, Sattley, Sierra Brooks, Calpine, Sierraville & Loyalton. Fire departments have ongoing training for firefighters and EMTs to keep current on their skills & certifications. At the sound of the siren, personnel leave their regular jobs and show up, seemingly out of nowhere, to take care of you. So while vacationing or visiting the area, play safe, but if faced with an emergency, rest assured, help is right around the bend. Use caution while navigating our narrow curvy scenic highways. **Remember when you see those emergency lights coming, get as far off the path as safely possible.**



Personal Preparedness goes a long way in avoiding meeting our trusty search and rescue volunteers. Let somebody know where you are going and when you expect to return. Do not count on your cell phone working. Carry basic first aid supplies, any required prescription meds, flashlight, jacket, blankets, bug repellent, sun-screen, snacks and water. Do not count on your GPS device working or being entirely accurate. **NOTE: Local stores will not be open in the evening.**



Should you need advanced medical attention while in Sierra County there is a high likelihood you will be transported by air. Many have discovered after receiving air transport, this service is not always covered by regular insurance. **Costs start at \$20,000.00 per trip.** Purchasing membership with a medical transport company in advance is a prudent option. For an annual fee averaging \$45- \$85 you can have peace of mind for you and your household.



AirMedCareNetwork (Reach for life & Calstar)
1-800-793-0010 <http://www.airmedcarenetwork.com/>
Enloe Flight Care 530-332-6774 <http://www.enloe.org/>
Care Flight 775-858-5700
<https://www.remsahealth.com/membership/>

When swimming, fishing, or engaging in water sports, being a strong swimmer is not a good rationale for not wearing a life jacket. Besides buoyancy, a life jacket has additional safety purposes to consider. A life jacket will help protect a person against hypothermia, an important threat when a rescue might be slow in coming. Most life jackets are brightly colored assisting in rescue efforts. They can also absorb some of the impact of a fall and minimize injuries. Seeing adults wear a life jacket sets a positive example for children.



911 calls made from cell phones are often routed to larger dispatch centers then transferred back locally. This can cause a delay in getting assistance. **Specify you are in Sierra County.**

In order to expedite the handling of an emergency call from your cellular phone you can program the direct dial number for Sheriff's Office Dispatch into your phone and use it instead of 911 while in Sierra County.



530-289-3700

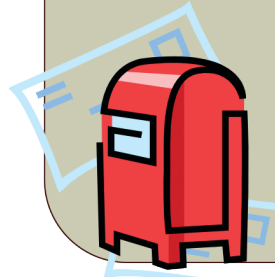
DO NOT RELY ON GPS or online map directions when traveling in Sierra County. Refer to the map in the center of this publication.

The Senior Center located in Loyalton is a public **Cooling Off Center** during the summer and offers a place to warm-up in the winter.

302 1st Street
Loyalton CA 96118 530-993-4770



Local Post Offices & Community Bulletin Boards are information sharing hubs. Post Offices are located on Main Street in the following towns; Loyalton, Sierraville, Calpine, Sierra City, Downieville, Alleghany, North San Juan (serves Pike).



Examples of information commonly posted:

- Road Closures & Traffic Controls
- Wild Fire Status Information
- Community Events
- Health Warnings

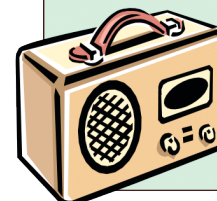
Should you require advanced medical attention while in Sierra County you will likely be transported to one of the following facilities:

- UC Davis Medical Center, Sacramento CA
- Enloe Medical Center, Chico CA
- Sierra Nevada Memorial Hospital, Grass Valley CA
- Renown Regional Medical Center, Reno NV
- Sutter Roseville Medical Center, Roseville CA
- Eastern Plumas District Hospital, Portola CA
- Tahoe Forest Hospital, Truckee CA



Very little radio signal is available on the mountainous West Side of the County. Some station options on the East Side are:

- Reno: 98.1FM 104.5FM 88.7FM 780AM 1270AM 1340AM (Spanish)
- Susanville: 92.3FM 93.3FM 1240AM
- Truckee: 101.5FM



This document was created through a collaboration involving Downieville Volunteer Fire & Ambulance, Eastern Plumas Healthcare & Ambulance, Western Sierra Medical Clinic, Sierra County Sheriffs Office & Office of Emergency Services, Child Care Council and others through their participation in the Sierra County Health Care Coalition. Contact LeTina Vanetti, Public Health Educator/Emergency Preparedness Coordinator 530-993-6737 lvanetti@sierracounty.ca.gov

Some Local Health & Medical Providers serving Sierra County:



NO pharmacies are located in Sierra County. Closest is Portola Village Pharmacy 530-832-4218



Eastern Plumas Health Care
700 Third Loyalton CA 96118
530-993-1231

Sierra County Public Health
202 Front St Loyalton CA 96118
530-993-6701
NOT Primary Care -Family Planning & Immunizations

Western Sierra Medical Clinic & Dental 209 Nevada St Downieville CA 95936
530-289-3298

Some limited emergency & pharmacy abilities.

Dr. Jason Baldwin DDS
703 Main St Loyalton CA 96118
530-993-4728

Sierra Family Medical Clinic
15301 Tyler Foote Road Nevada City 95959
530-292-3478

NO Gas or Diesel available in Sierra City or Downieville.

Gas available in Sierraville, Bassett and Loyalton.



Veterinarians serving Sierra County

Dr. Dennis Spence is in Downieville at the Sierra Hardware parking lot most Tuesdays. 530-273-5331

Plumas Vet Service, Beckwourth CA
530-832-4485

Large Animal Vet Services Chilcoot
530-993-1400



SIERRA CITY'S ORIGINAL

BIG CITY

ROD RUN

2023

SATURDAY

16

SEPTEMBER

\$30

REGISTRATION FORMS
AVAILABLE ONLINE

HWY 49 MAIN STREET

In Beautiful

DOWNTOWN SIERRA CITY

SHOW FROM 10AM TO 4PM

FOOD

AWARDS

MUSIC

RAFFLE PRIZES

FAMILY FUN EVENT

WWW.BUTTESRESORT.COM/CAR-SHOW

(530) 862-1170 FOR MORE INFO



Wine in the Woods

Taste a variety of wines & delicious food in a spectacular garden setting to benefit Sierra City Volunteer Fire Department



Saturday, Sept. 30 ~ 3:00-6:00 pm

Live
Music!

Sorracco's Gardens

203 Main Street, Sierra City



(530) 862-1151 for tickets & info

Tickets \$30 in advance or \$35 at the door. Ages 21+ only

Music at the Mine 2023



Kentucky Mine Amphitheater

Sierra City, CA

Saturday, June 24th • 7:00 PM

Broken Compass Bluegrass (feat. Kyle Ledson) w/ 86 Proof

• Progressive Bluegrass & Beyond •

Saturday, July 8th • 7:30 PM

MUMBO GUMBO

• 30th Anniversary Party •

Saturday, July 22nd • 7:30 PM

Boot Juice

• Rockin' Americana / Cosmic Rock n' Roll •

Saturday, August 12th • 7:30 PM

The Island of Black & White

• Dynamic Mash-up of Rock, Blues, Funk & Reggae •

Saturday, August 26th • 7:00 PM

Merrygold w/ Juliet Gobert

• Whiskey Soaked Americana / Angelic Female Vocalists •



SIERRA
COUNTY
HISTORICAL
SOCIETY

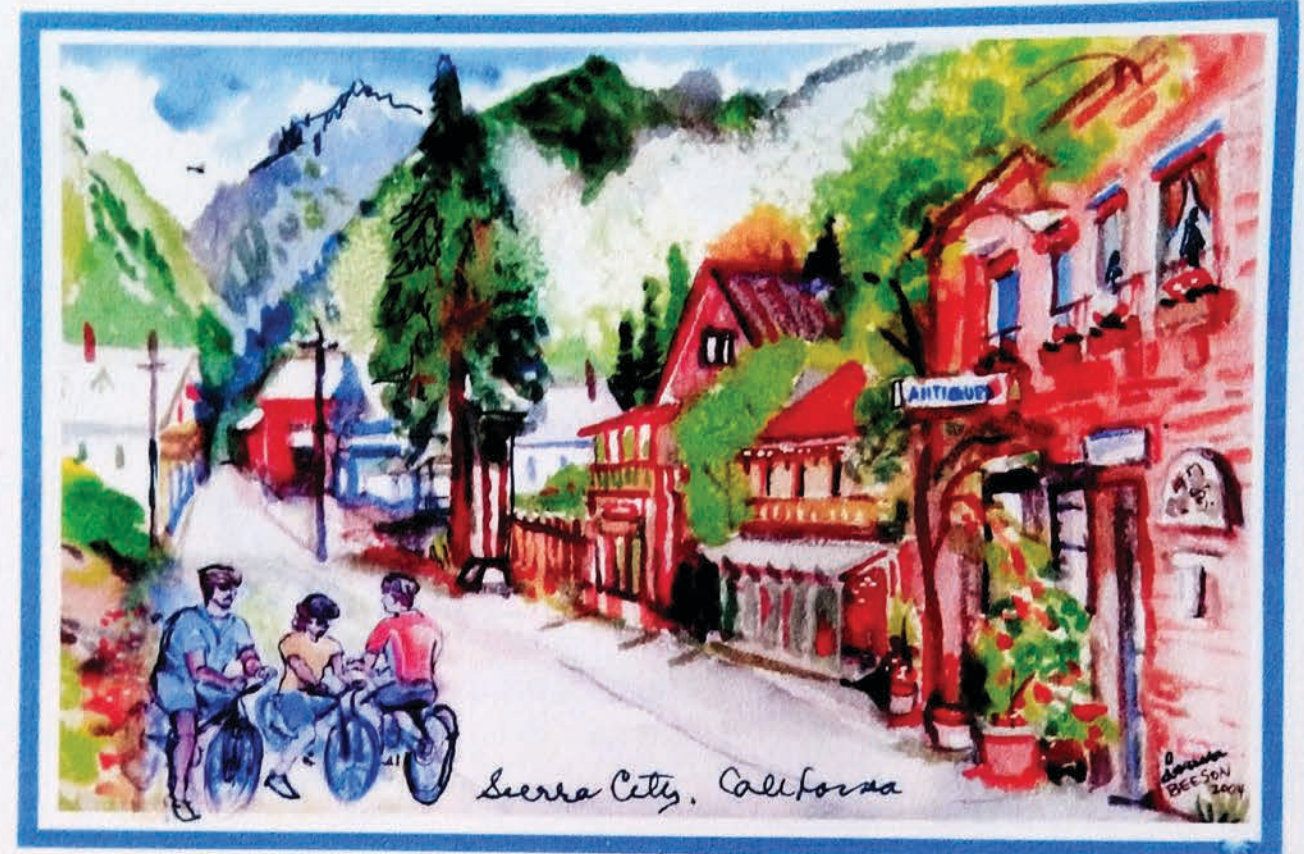
Tickets \$30.00 • Students / \$15.00 • Kids 10 and under FREE

On-Line tickets available at www.sierracountyhistory.org

Information / Questions / Concerns

Call Chris Stockdale: (530) 277-6408 / cstockrock@gmail.com

22nd annual OKTOBERFEST



In Downtown Sierra City, California

OCTOBER 7th, 2023

Saturday 10am to 4pm
Food, Fun, Music Vendors

History comes alive in
Downieville, CA
 \$5 - Seniors, Students & Kids
 \$10 - Adults
 Saturday, October 28th - 3pm
 All Tours Start at Tin Cup Diggin's Park

**DOWNIEVILLE
 Halloween
 HISTORY
 TOUR
 2023**

Get ready to explore this idyllic village tucked in the Lost Sierra and hear about its grizzly past...

Early California Pioneers came to Downieville for gold. Learn about some buried in the cemetery from local historians.

VisitSierraCounty.com

TRICK-OR-TREAT
 Walk along Main St for a spooky good time!

TAKE A SPOOKY STEP BACK IN TIME!

ASK ABOUT SPECIAL WEEKEND RATES FOR THE TOUR

Enjoy panoramic nature views as you are guided through the historic town built between two rivers.

Enjoy pre-tour libations at Boomtown Lounge and afterparty at St. Charles Place.

St. Charles Costume Party

St. Charles Place

Logos: Riverside Mountain Lodge, Downieville Museum, Discover Downieville, Sierra County Arts Council, Carriage House Inn, St. Charles Place, Sierra County Historical Society, Downieville River Inn.

**2023
 Downieville
 Gold Rush Days**

HISTORIC DOWNTOWN!

LIVE MUSIC

RIVER FUN!

GET YOUR GOLD!

PRESENTED BY ICMJ PROSPECTING & MINING JOURNAL,
 DISCOVER DOWNIEVILLE & HWY 49 ADVENTURES
AUGUST 10TH - 13TH, 2023
 DOWNIEVILLE, CA

TO BENEFIT DOWNIEVILLE NON-PROFITS, THE MUSEUM, AND COMMUNITY GROUPS!

Downieville Mountain Brewfest
 Saturday, July 22nd • 2 - 6pm
 Main Street, Downieville, California
 Music by Crossing 49

Tickets: \$35 in advance
 \$45 at the door
www.Eventbrite.com or
 purchase in Downieville
www.DownievilleBrewfest.com

Come to Downieville to experience some of the finest Brews, Music & Food!
 Must be 21 for beer tasting • Food available for purchase
 No charge for Designated Drivers or non-drinkers
 Please no dogs in the Brewfest area

Sponsored by Downieville Improvement Group and music sponsor: Sierra County Arts Council

Rebecca Mooers
 REALTOR® | DRE#02025755
 530.277.6885
 rebecca.mooers6@gmail.com
 776 Freeman Lane
 Grass Valley, CA. 95945
 www.rebeccamooers.com
 RE/MAX GOLD

BASSETTS STATION
 Est. 1865

Tim & Becky Robinson
 100 Gold Lake Road
 Sierra City, CA
 96125
 530-862-1297

Sierra Pines Resort
 Recharge • Dream • Venture Out

Cindy & Glen Haubl

(530) 862-1151
 (800) 682-9848
 SierraPinesResort@gmail.com

104 Main Street
 PO Box 142
 Sierra City, CA 96125
 www.SierraPinesResort.com

DOWNIEVILLE DAY SPA

KATHY FISCHER
 OWNER & COSMETOLOGIST SINCE 1985

RETREAT FACIALS SPA MANICURES SPA PEDICURES
 CUSTOM HAIR COLORING ~ CUTTING ~ STYLING
 GEL NAILS ACRYLIC NAILS CND SHELLACS
 BODY WAXING

530-289-3504
 309 MAIN ST. DOWNIEVILLE, CA. 95936
 DOWNIEVILLEDAYSPA@ATT.NET

Sonya Ziegler Meline
 Hotel Manager

110 Commercial Street
 Downieville, CA. 95936

(619) 379-1088 (530) 289-3573
 sonya@downievillecarriagehouse.com
 www.downievillecarriagehouse.com

**carriage
 HOUSE INN**

SIERRA COUNTRY STORE
 FULL SERVICE GROCERY

LARRY/KATHY BREED
 JANITORS & BURGER BUILDERS

GROCERIES • DELI • CATERING & MORE

smack dab in the middle of town

213 MAIN ST
 PO BOX 196
 530-862-1560
 916-487-1700
 409CHEVY@SBCGLOBAL.NET
 www.sierracountrystore.com
 NOW FEATURING A WEBCAM!

Red Moose Café & Inn

 Sierra City, California
 Steve & Jenny Traverso

224 Main Street
 P.O. Box 213
 Sierra City, CA 96125
 530-862-1024

RedMooseCafe.com
 Rental Rooms Available

The Sierra City House
 Relaxing streamside vacation rental
 Tobias Young

Contact info:
 P.O. Box 944
 Petaluma, CA 94953
 707-338-6901

tyoung@sierravacation.com
 www.sierravacation.com

Music at the Mine

 Kentucky Mine Amphitheater
 Sierra City, CA


 SABRINA SMITH
 308 MAIN STREET
 DOWNIEVILLE, CA 95936
 EMAIL: SABISMITH@HOTMAIL.COM
 PHONE: (916) 730-2070

Tom's Snowmobile & Service
 MAKING FASTER SMOOTHER
 Ski-Doo Sales, Parts, Accessories
 Tom Dines
 Owner
 630 South Lincoln
 St., Sierraville
 96126
 530-994-3522
 530.862.1148 fax
 info@tomssnowmobile.com
 www.shoptomssnowmobile.com




Bike. Hike. Fish. Swim. Relax.

Downieville River Inn
 www.downievilleinn.com

Michael & Teresa Taylor | 121 River St / P.O. Box 35
 Proprietors | Downieville, CA 95936
 (530) 289-3308 | reservations@downievilleinn.com

St. Charles Place
 Jim & Steve
 Roos, proprietors

P.O. Box 548 | 101 & 103 Commercial St.
 highsierrarealty@bcglobal.net | Downieville, CA 95936

My Sisters Cottage
 Amanda Sedano
 Owner
 A Unique Boutique Motel

mysisterscottage.com | 207 Main Street
 (530) 862-1505 | Sierra City, CA 96125

SIERRACOUNTY.COM
 LIFE DOESN'T GET ANY BETTER THAN THIS


SIERRA COUNTY HISTORICAL SOCIETY
 Kentucky Mine Historic Park & Museum
 100 Kentucky Mine Road
 P.O. Box 260, Sierra City, CA 96125
 (530) 862-1310
 www.sierracountyhistory.org



Country Class Collectibles
 Old Sattley Cash Store
 530-394-0615
 Marjorie Voorhees & Scott Perry
 Native American, Stained Glass, Jewelry, Minerals
 & Relics

La Cocina De Oro
 Taqueria
 322 Main Street
 Downieville, California 95936
 (530) 289-3584
 La Vida Loca



East Sierra Valley Chamber of Commerce
 Serving Those Who Serve The Community
 P.O. Box 366 Loyalton, CA 96118

Visit us:
 www.eastsierravalleychamber.com

Contact:
 info@eastsierravalleychamber.com




The YUBA GALLERY 208 Main St., Downieville
The YUBA THEATRE 212 Main St., Downieville

Information: B.J. Jordan
 info@sierracountyartscouncil.org
 Phone: 530-289-9822
 www.sierracountyartscouncil.org




SIERRA BOOSTER
 A PICTORIAL NEWSPAPER...
 AGGRESSIVELY DEVOTED TO THE BEST INTERESTS
 OF SIERRA, EASTERN PLUMAS and PARTS of
 LASSEN, NEVADA and YUBA COUNTIES.



Yuba River Inn
 • Housekeeping Cabins
 • River Frontage

Highway 49 / P.O. Box 236
 Sierra City, CA 96125
 (530) 862-1122

Rick & Mike Hertzberg
 Proprietors



Sierra Hardware
 A hardware store like they used to be.
 Cindy McCreary
 Owner
 530-289-3582 Fax 530-289-3259
 305 Main Street, Downieville, Ca. 95936
 P.O. Box 256 Downieville, Ca. 95936
 shardware@att.net
 sierrahardwarestore.com



 **WHITE'S SIERRA STATION, INC.**
 SINCE 1923

FOOD MART, GAS, TIRES
A.S.E. CERTIFIED AUTO MECHANICS
 Fresh Deli Sandwiches
 Largest Selection of Candy in Sierra Valley • Parrot Ice
 Cappuccino • Deli Items • Roller Grill • Nachos
 Soft Pretzels • Tamales • Picnic Supplies • Bait/Tackle
 Leanin' Tree Cards • Iced Coffee

Bonnie M. White, Food Mart Manager
 508 Main St. Loyalton, CA 96118 • PH 530 993-1212 FAX 993-1821
 WSSI is a We Care/We Card Vendor


203 Main St. (Box 195)
 Sierra City, CA 96125

SORRACCO'S SALOON


Ron & Cheryl
 530-862-1130
 ron@sorraccos.com

Fine Wines
 Spirits
 Micro Brews

On the North Fork of the Yuba River in historic Sierra City

Sierra Skies RV Park.COM


RIVERSIDE MOUNTAIN LODGE
 DOWNIEVILLE, CA 1949

Sonya Ziegler Meline Hotel Manager
 (530) 289-1000 (619) 379-1088

sonya@riversidemtnlodge.com
 www.riversidemtnlodge.com

Jennifer Malone
 Chief Executive Officer
 jenniferm@wsmed.org

Western Sierra Medical Clinic
 Better Health Together

844 Old Tunnel Road
 Grass Valley, CA 95945
 Phone (530) 273-3813
 Fax (530) 273-4573
 www.wsmed.org

PLUMAS SIERRA CATTLEWOMEN

Beef Promotion & Education
POB 406

PORTOLA CA, 96122

?s 510-219-1082

www.plumassierracattlewomen.org

Sierra Buttes SNOWBUSTERS

Sharon Grenier
 Member Chair

Phone 530-862-1577
 Fax: 916-927-3310
 email: donna@johnson-ind.com.

AN ACTIVE CLUB FOR ALL

Willoughby's on the River

171 River Street
 Downieville, CA 95936

(602) 253-6562 - Dallas Porter-Stowe
 dallasps1@cox.net
 www.willoughbysriver.com

Leavitt Group

Mike Flanigan
 Flanigan-Leavitt Insurance
 Co-Owner

Quincy, Susanville, Reno

530.283.1112 ext. 1185
 866.781.3110 fax
 CA License OE05639
 NV License 17793

mike-flanigan@leavitt.com
 400 W. Main Street
 Quincy, CA 95971
 www.flaniganleavitt.com

DOWNIEVILLE OUTFITTERS
 Est. 1996

www.downievilleoutfitters.net
 info@downievilleoutfitters.net
 Find us on FB

310 MAIN STREET
 DOWNIEVILLE, CA 95936
 (530) 289-0155

DICKSON REALTY
 EXTRAORDINARY EXPERIENCE™

Lil Schaller Broker-Manager
 11836 Donner Pass Road, Truckee, CA 96161
 O. 530.550.5007 F. 530.587.8064 TF. 800.541.4440
 DicksonTruckee.com | lschaller@dicksonrealty.com | BRE#00806684

Sardine Lake Resort

THOMAS HUNT

POST OFFICE BOX 216
 SIERRA CITY, CA 96125

(530) 862-1196 • sardine@sccn.net • sardinelakeresort.com

Linda Voracek Consulting

Retail * Consumer Products * Hospitality

linda@lmvandcompany.com
 925-766-8084 or 817-403-5531

LMV & Co Ventures, LLC

Services

- Retail Strategy
- Business Development
- Brand Building
- Market Research
- Product Development
- Organization Process Framework

WAIC Shaffer's HIGH SIERRA CAMP
 Overnight Summer Camp for Boys & Girls Ages 8-17

FUN FRIENDS ADVENTURE

Lisa & Scott Shaffer, Directors
 HighSierraCamp.com, LisaAndScott@HighSierraCamp.com (415) 897-0316

Salmon Lake Lodge

Rowboat rentals
 \$40/day cash only, no rsvn needed

Cabin reservations: 530-852-0874
 www.salmonlake.net

SIERRA CITY CALIFORNIA

Buttes Resort

Cabins and rooms on
 the North fork of the
 Yuba river

530-862-1170
 Buttesresort.com

SIERRA HOT SPRINGS RESORT & RETREAT CENTER

Hot Springs, Lodging, Camping Massage
 & Spa Treatments & More

530.994.3773
 www.sierrahotsprings.org

PLUMAS-SIERRA RURAL ELECTRIC CO-OP PSREC

73233 State Route 70
 Portola, CA 96122

530.832.4261
 800.555.2207

Fax: 530.832.5761

www.psrec.coop

Downieville Grocery

101 Sunnyside Dr
 Downieville Ca 95936

530-289-3596

DOWNIEVILLE LIONS CLUB

A volunteer community service organization
 promoting the welfare of organizations and
 members of our communities.

PO Box 24 Downieville, CA 95936

Sierra City Improvement Group
 A 501(c)(3) Organization
 PO BOX 234 Sierra City, CA 96125

SCIG
 PO BOX 234
 SIERRA CITY, CA 96125

RE/MAX SUCCESS

RENEE NEEL

Real Estate Advising & Solutions
 DRE# 01942360

805-471-4254
 P.O. Box 134
 Sierra City, CA 96125
 renee@realteam360.com

Family Roots in Sierra City since 1962

DICKSON
REALTY

EXTRAORDINARY EXPERIENCE™


Bonnie Jessee REALTOR® Associate, ABR, RSPS
289 Commercial Street, Portola, CA 96122
530.412.3984
Welcometohometruckee.com | bjessie@dicksonrealty.com
CA BRE# 01264171



Discover California's Hidden Playground
Sierra County
Visitors Bureau

visitsierracounty.com

Adventure | Trails | Day Trips | Lodging | Dining
History | Deals | Health & Safety



INTERACTIVE
RESOURCES
architects + engineers

Thomas Butt, FAIA, LEED AP BD+C
Architect | Principal

117 Park Place
Richmond, CA 94801
510.236.7435 MAIN
510.231.7502 DIRECT
510.220.1577 MOBILE
tom.butt@intres.com
www.intres.com



SPIRITUAL
ALIGNMENT

Center for Inner Transformation
Retreats | Holistic Healing | Leadership Coaching

530-289-3475
Contact@SpiritualAlignment.com
www.SpiritualAlignment.com
23581 Hwy-49, Downieville, CA 95936

530-283-6272



PLUMAS-SIERRA
The Last Best Little
COUNTY FAIR
QUINCY, CALIFORNIA



Welcome to
DOWNIEVILLE
"Where two rivers meet in a Lost Sierra Oasis"


RIVERSIDE MOUNTAIN LODGE
Downieville, CA



... Gilded Drifter Inn ...
Loyalton CA, 13 Miles NE of Sierra Hot Springs
Rooms and Suites starting at \$60/Night

530.428.5015
GildedDrifterInn.com

Jon Peek DVM
retired - mostly



"Beer Money" Practice
Advice and More

530-524-9911
jonpeekdvm@att.net

THE SIERRA COUNTY
CHAMBER OF
COMMERCE THANKS
Cheryl Madrid
FOR HER SUPPORT!



SIERRA COUNTY
California
CHAMBER OF COMMERCE



4601 STATE HIGHWAY 49 CAMPTONVILLE, CA 95922
INDIAN VALLEY
OUTPOST
EST 1839
WWW.CAMPINGYUBARIVER.COM

GENERAL STORE
RESTAURANT
BAR
CREEKSIDE
LODGING &
VINTAGE SHOP!
(530) 289-3349




COLD RUSH
COFFEE ICE CREAM
DOWNIEVILLE • CALIFORNIA

Discover Downieville

SCAN ME

CHECK US OUT ON
DISCOVERDOWNIEVILLE.COM



Sierra City Mercantile
Gallery & Gifts
221 Main Street | Sierra City, CA

Website | squareup.com/store/sierra-city-mercantile/
facebook | www.facebook.com/sierracitymercantile/
Phone | 415-407-2124 / 530-862-1247



UNDERGROUND GOLD
MINERS MUSEUM

356 MAIN STREET, ALLEGHANY

OPEN WEEKENDS
MEMORIAL DAY THRU LABOR DAY
NOON TO 4, OR BY APPOINTMENT

UNDERGROUNDGOLD.COM (530) 287-3330

Sierra Buttes Trail Stewardship



Our mission is building sustainable recreation-based communities through stewardship, job creation and world-class events. Providing quality outdoor experiences through trail construction and maintenance in the Lost Sierra.

www.SierraTrails.org



www.BarefootShiatsu.Life

Leah Gillman (510) 543-3450

Sierra Frontier Medical Resources, Inc.

"Seeking Pathways to Emergency and Urgent Healthcare Solutions in Western Sierra County"

501(c)3 Non-Profit Organization Serving Our Community

http://www.sierrafreem.org



THE
Sierra
Chalet

"Any time of Year
is a great time here!"



Sierraville Service & Country Store
(530) 994-3529
126 S Lincoln St. Sierraville, CA 96126

#49 ALL PLANS SHALL BE PUT ON HOLD...

Give yourself a break! Just follow along to wherever the day takes you. It's a lost art, this moseying business, so today let's put it on the top of your list, where you can mosey, dilly-dally and dawdle to your hearts content. Life happens in the little things, so follow that ant trail, skip that rock and reconnect with your better self. Enjoy!



SIERRA COUNTY
California
CHAMBER OF COMMERCE



PO BOX 436
SIERRA CITY, CA 96125

1-800-200-4949

WWW.SIERRACOUNTYCHAMBER.COM

Sierra County Sheriff's office, Downieville: 289-3700
Call 911 for all emergencies.

As remote and sparsely populated as Sierra County is, we have a great Volunteer base. Volunteer Fire Departments are located in Alleghany, Pike, Downieville, Sierra City, Sattley, Calpine, Sierraville & Loyalton. Many of the towns also have active Fire Auxiliaries which are constantly putting on functions to support the Fire Departments.

Fire departments have ongoing training for the firefighters, and the EMT's have

continuous training to keep current on their skills & certifications. Even part-time residents can join the fire department, stop by the local firehouse.

At the sound of the siren, fire personnel including EMT's and First Responders show up, seemingly out of nowhere to take care of you.

So while vacationing or visiting the area, play