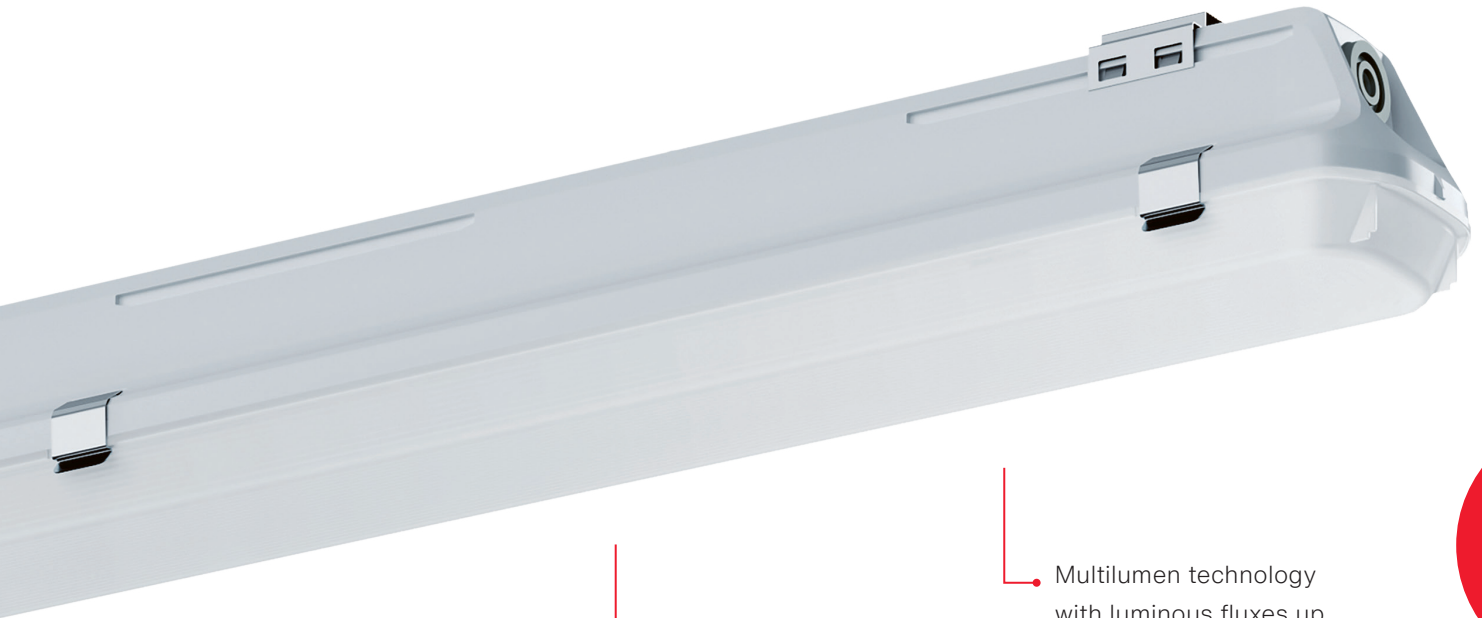


siteco



Monsun® 12

• Durable and reliable with up to 100,000 hours of service life

• Suitable for exposed outdoor areas with ambient temperatures up to 50° C

• Multilumen technology with luminous fluxes up to 12,000 lm for a maximum of adaptability

Monsun® Luminaire range

The next level of damp-proof lighting.

Monsun® 11 Xtreme



Undeniably the top model of damp-proof luminaires.

- Full service lifetime in ambient temperatures from -35° C to +55° C
- UGR < 25 through longitudinal prisms in all performance levels
- Suitable for use in livestock farming

Features

- Extremely temperature resistant
- Ammonia-resistant with PMMA variants
- 2 light distributions
- Emergency lighting variants
- DALI or ON / OFF

Technical specifications

Luminous flux lm	4,000 – 7,000
Luminous efficacy lm / W	up to 162
Rated service life	50,000 h (L85 / B50); 70,000 h (L80 / B50) each at ta max.
Protection rating	IP66
Ambient temperature	max. -35° C to +55° C
Impact resistance	Cover in PMMA (IK03) or PC (IK08), housing and cover inseparably connected
Certifications	CE, VDE, ENEC, D-Symbol, meets requirements of IFS
Size in mm L × W × H	1,196 × 102 × 85

Monsun® 12



The next level in damp-proof lighting.

- Luminous fluxes up to 12,000 lm for maximum adaptability
- Multilumen technology for flexible lighting packages
- With smart features such as constant lumen output and the interface to SITECO Connect

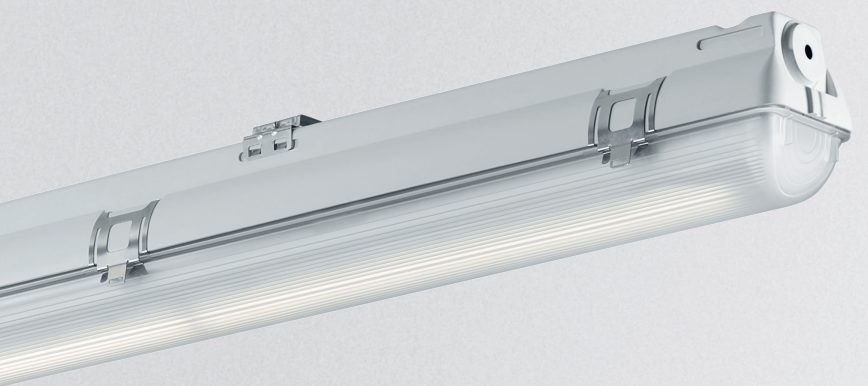
Features

- Up to 100,000 h
- Increased chemical resistance
- For exposed outdoor areas
- 3 light distributions
- Tunable White
- 6,500 K
- Car park variants
- Emergency lighting variants
- Luminous flux adjustment

Technical specifications

Luminous flux lm	3,800 – 12,000
Luminous efficacy lm / W	up to 182
Rated service life	70,000 h L80 / B50 at 35° C; 50,000 h; L90 / B50 at 35° C
Protection rating	IP66
Ambient temperature	max. -35° C to +40° C
Impact resistance	Cover in PMMA (IK04), PC (IK08), PA (IK08), PMMA impact resistant (IK06)
Certifications	CE, VDE, ENEC, D-Symbol, meets requirements of IFS
Size in mm L × W × H	1,590 × 90 × 88

Monsun® 21



Economical and easy to install.

- For retrofitting of 1 × 36 W and 2 × 36 W systems
- „Monitoring-ready“ via Siteco Connect with DALI control option
- Also with practical through-wiring for easy installation

Features

- DALI or ON / OFF
- Covers in PMMA and PC

Technical specifications

Luminous flux lm	2,400 – 4,300
Luminous efficacy lm / W	up to 141
Rated service life	50,000 h (L80 / B50) at 25° C
Protection rating	IP65
Ambient temperature	max. -25° C to +35° C
Impact resistance	Cover in PMMA (IK03), PC (IK08)
Certifications	CE, VDE, ENEC, D-Symbol, meets requirements of IFS
Size in mm L × W × H	1,577 × 84 × 102

Monsun® 22



Reliable, intelligent, well thought out.

- Excellent glare control for industry and craft (UGR up to < 22)
- With intelligent and retrofittable features for use in industry and car parks
- Luminaire can be opened without tools despite protection class IP66

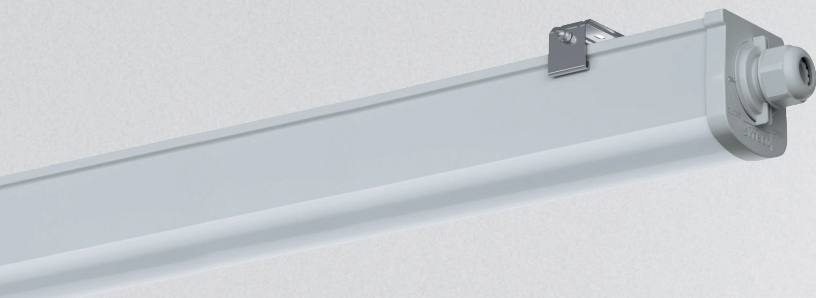
Features

- Optics with medium / wide distributions
- DALI, ON / OFF multi-lumen technology
- Increased chemical resistance
- 6,500 K
- Car park variants
- Emergency lighting variants
- Luminous flux adjustment

Technical specifications

Luminous flux lm	2,600 – 6,000
Luminous efficacy lm / W	up to 145
Rated service life	50,000 h L80 / B50 at 25° C
Protection rating	IP66
Ambient temperature	max. -25° C to +35° C
Impact resistance	Cover in PMMA (IK04), PC (IK08), PA (IK08)
Certifications	CE, VDE, ENEC, D-Symbol, meets requirements of IFS
Size in mm L x W x H	1,590 x 90 x 88

Monsun® 31



Simple damp-proof lighting with clever features.

- Efficient and uncomplicated refurbishment solution by using existing mounting points thanks to freely positionable mounting clips
- Quick and easy installation thanks to extractable connection terminal
- Pre-installed through-wiring for even easier installation of the luminaire

Features

- DALI, ON / OFF
- Extractable connection terminal and pre-installed through-wiring
- 3 / 5 x 2.5 mm²
- Optional emergency lighting 3 h

Technical specifications

Luminous flux lm	2,300 – 6,700
Luminous efficacy lm / W	up to 135
Rated service life	50,000 h (L80 / B50) at 25° C
Protection rating	IP66
Ambient temperature	max. -20° C to +40° C
Impact resistance	IK 08, housing and cover inseparably connected
Certifications	CE, D-Symbol, meets requirements of IFS
Size in mm L x W x H	558 / 1,158 / 1,458 x 69 x 77

Monsun® 41



Simple, practical, robust.

- Freely positionable mounting clips for renovation of existing fixing points
- Short installation time thanks to one-sided In-out wiring with accessories

Features

- ON / OFF
- In/out wiring with accessories

Technical specifications

Luminous flux lm	2,000 – 6,000
Luminous efficacy lm / W	up to 120
Rated service life	50,000 h (L70 / B50) at 25° C
Protection rating	IP65
Ambient temperature	max. -20° C to +40° C
Impact resistance	IK 08, housing and cover inseparably connected
Certifications	CE
Size in mm L x W x H	1,200 / 1,500 x 57 x 67

Monsun[®] 11 Xtreme

Main distinguishing feature	Colour temperature K	Luminous flux lm	Power W	Efficacy lm / W	Ambient temperature	Control	Cover	Optics	Order number
Narrow distribution	4,000	4,100	26	158	-35 ... +55°C	ON / OFF	PMMA	narrow	5LS51271TAN
	4,000	4,100	26	158	-35 ... +50°C	ON / OFF	PMMA	narrow	5LS51271TAN003
	4,000	4,100	37	111	-25 ... +40°C	DALI	PMMA	narrow	5LS512D1TCN
	4,000	4,100	37	111	-25 ... +40°C	DALI	PMMA	narrow	5LS512D1TCN005
	4,000	4,000	26	154	-35 ... +55°C	ON / OFF	PC	narrow	5LS52271TAN003
	4,000	4,000	37	108	-25 ... +40°C	DALI	PC	narrow	5LS522D1TCN
	4,000	4,000	37	108	-25 ... +40°C	DALI	PC	narrow	5LS522D1TCN005
	4,000	6,300	42	150	-35 ... +50°C	ON / OFF	PMMA	narrow	5LS51276TAN
	4,000	6,300	42	150	-35 ... +50°C	ON / OFF	PMMA	narrow	5LS51276TAN003
	4,000	6,300	43	145	-25 ... +45°C	DALI	PMMA	narrow	5LS512D6TCN
	4,000	6,300	43	145	-25 ... +45°C	DALI	PMMA	narrow	5LS512D6TCN005
	4,000	6,100	42	144	-35 ... +50°C	ON / OFF	PC	narrow	5LS52276TAN
	4,000	6,100	42	144	-35 ... +50°C	ON / OFF	PC	narrow	5LS52276TAN003
	4,000	6,000	43	140	-25 ... +45°C	DALI	PC	narrow	5LS522D6TCN
	4,000	6,000	43	140	-25 ... +45°C	DALI	PC	narrow	5LS522D6TCN005
4,000	7,000	52	135	-25 ... +45°C	DALI	PC	narrow	5LS522D7TCN	
Wide distribution	4,000	4,200	26	162	-35 ... +55°C	ON / OFF	PMMA	wide	5LS51271TAW
	4,000	4,200	26	162	-35 ... +50°C	ON / OFF	PMMA	wide	5LS51271TAW003
	4,000	4,200	37	114	-25 ... +40°C	DALI	PMMA	wide	5LS512D1TCW
	4,000	4,200	37	114	-25 ... +40°C	DALI	PMMA	wide	5LS512D1TCW005
	4,000	4,100	26	157	-35 ... +55°C	ON / OFF	PC	wide	5LS52271TAW
	4,000	4,100	26	157	-35 ... +50°C	ON / OFF	PC	wide	5LS52271TAW003
	4,000	4,100	37	110	-25 ... +40°C	DALI	PC	wide	5LS522D1TCW005
	4,000	5,200	33	158	-35 ... +50°C	ON / OFF	PMMA	wide	5LS51274TAW
	4,000	5,200	33	158	-35 ... +50°C	ON / OFF	PMMA	wide	5LS51274TAW003
	4,000	6,500	42	155	-35 ... +50°C	ON / OFF	PMMA	wide	5LS51276TAW
	4,000	6,500	42	155	-35 ... +50°C	ON / OFF	PMMA	wide	5LS51276TAW003
	4,000	6,500	43	150	-25 ... +45°C	DALI	PMMA	wide	5LS512D6TCW
	4,000	6,500	43	150	-25 ... +45°C	DALI	PMMA	wide	5LS512D6TCW005
	4,000	6,300	42	149	-35 ... +50°C	ON / OFF	PC	wide	5LS52276TAW
	4,000	6,300	42	149	-35 ... +50°C	ON / OFF	PC	wide	5LS52276TAW003
4,000	6,200	43	144	-25 ... +45°C	DALI	PC	wide	5LS522D6TCW	
Emergency lighting	4,000	4,200	37	114	+5 ... +40°C	DALI	PMMA	wide	5LS512D1TEWB
	4,000	4,000	42	95	+5 ... +40°C	DALI	PC	narrow	5LS522D1TENB
	4,000	4,100	42	97	+5 ... +40°C	DALI	PC	wide	5LS522D1TEWB

Includes non-replaceable LED modules of energy efficiency classes A++, A+, A (range A++ to E)

Monsun® 12

Main distinguishing feature	Colour temperature K	Luminous flux lm	Power W	Efficiency lm / W	Ambient temperature	Control	Cover	Optics	Additional information	Order number	
Standard-variants	4,000	4,000	22	179	-35 ... +40° C	ON/OFF	PMMA	wide		51FP107P430H	
	4,000	5,800	35	174	-35 ... +40° C	ON/OFF	PMMA	wide		51FP107P460H	
	4,000	12,000	66	182	-35 ... +35° C	ON/OFF	PMMA	wide		51FP107P4B0Q	
	4,000	6,100	35	175	-25 ... +40° C	DALI	PMMA	wide		51FP10DP460H	
	4,000	12,100	68	179	-40 ... +35° C	DALI	PMMA	wide		51FP10DP4B0Q	
	4,000	4,000	25	157	-35 ... +40° C	ON/OFF	PC	wide		51FP207P430H	
	4,000	5,900	38	156	-35 ... +40° C	ON/OFF	PC	wide		51FP207P460H	
	4,000	10,600	66	160	-35 ... +35° C	ON/OFF	PC	wide		51FP207P4B0Q	
	4,000	5,300	35	154	-25 ... +40° C	DALI	PC	wide		51FP20DP460H	
	4,000	10,700	68	158	-40 ... +35° C	DALI	PC	wide		51FP20DP4B0Q	
Tunable White function	TW, 2,700 – 6,500	6,000	37	160	-25 ... +35° C	DALI	PMMA	wide		51FP10TP960X	
		5,400	37	147	-25 ... +35° C	DALI	PC	wide		51FP20TP960X	
100,000 h L80 / B50 at 25° C	4,000	4,000	22	179	-35 ... +40° C	ON/OFF	PMMA	wide	100,000 h	51FP108P430H	
	4,000	6,000	34	180	-35 ... +40° C	ON/OFF	PMMA	wide	100,000 h	51FP108P460H	
	4,000	3,800	22	172	-25 ... +40° C	DALI	PMMA	wide	100,000 h	51FP10EP430H	
	4,000	6,100	35	175	-25 ... +40° C	DALI	PMMA	wide	100,000 h	51FP10EP460H	
	4,000	4,000	25	157	-35 ... +40° C	ON/OFF	PC	wide	100,000 h	51FP208P430H	
	4,000	5,400	34	158	-35 ... +40° C	ON/OFF	PC	wide	100,000 h	51FP208P460H	
	4,000	5,300	35	154	-25 ... +40° C	DALI	PC	wide	100,000 h	51FP20EP460H	
Multilumen ECG	4,000	4,100 – 8,000	45	178	-35 ... +40° C	Multi / ON / OFF	PMMA	wide		51FP10MP480H	
	4,000	4,100 – 8,000	45	176	-35 ... +40° C	Multi / ON / OFF	PMMA	medium		51FP12MP480H	
	4,000	8,100 – 12,000	67	182	-35 ... +35° C	Multi / ON / OFF	PMMA	wide		51FP10MP4B0Q	
	4,000	8,000 – 12,000	67	177	-35 ... +35° C	Multi / ON / OFF	PMMA	narrow		51FP11MP4B0Q	
	4,000	8,000 – 11,900	67	176	-35 ... +35° C	Multi / ON / OFF	PMMA	medium		51FP12MP4B0Q	
	4,000	3,600 – 8,000	52	154	-35 ... +40° C	Multi / ON / OFF	PC	wide		51FP20MP480H	
	4,000	7,100 – 10,600	66	161	-35 ... +35° C	Multi / ON / OFF	PC	wide		51FP20MP4B0Q	
	4,000	7,000 – 10,300	66	156	-35 ... +35° C	Multi / ON / OFF	PC	medium		51FP22MP4B0Q	
Constant lumen output CLO	4,000	4,100	25	163	-35 ... +40° C	ON/OFF	PMMA	wide	CLOi ¹⁾	51FP109P440H	
	4,000	6,100	38	161	-35 ... +40° C	ON/OFF	PMMA	wide	CLOi ¹⁾	51FP109P460H	
	4,000	6,100	35	175	-25 ... +40° C	DALI	PMMA	wide	CLOi ¹⁾	51FP10FP460H	
	4,000	5,400	38	141	-35 ... +40° C	ON/OFF	PC	wide	CLOi ¹⁾	51FP209P460H	
	4,000	5,300	35	154	-25 ... +40° C	DALI	PC	wide	CLO	51FP20FP460H	
6,500 K	6,500	4,100 – 8,000	45	176	-35 ... +40° C	Multi / ON / OFF	PMMA	wide		51FP10MP680H	
	6,500	6,000	35	172	-25 ... +40° C	DALI	PMMA	wide		51FP10DP660H	
Emergency lighting	4,000	6,000	35	175	-25 ... +40° C	DALI	PMMA	wide	DC-capable	51FP10DP468H2	
	4,000	3,800	25	157	+5 ... +35° C	ON/OFF	PMMA	wide	3 h self test	51FP107P437H3G	
	4,000	6,100	37	163	+5 ... +35° C	ON/OFF	PMMA	wide	3 h self test	51FP107P467H3G	
	4,000	6,100	37	163	+5 ... +35° C	DALI	PMMA	wide	3 h DALI-monitoring	51FP10DP467H3H	
	4,000	6,100	35	175	-25 ... +35° C	DALI	PMMA	wide	with changeover relay	51FP10DP460HR	
	4,000	4,000	28	142	+5 ... +35° C	ON/OFF	PC	wide	3 h self test	51FP207P437H3G	
	4,000	5,300	37	143	+5 ... +35° C	ON/OFF	PC	wide	3 h self test	51FP207P467H3G	
	4,000	5,300	37	143	+5 ... +35° C	DALI	PC	wide	3 h DALI-monitoring	51FP20DP467H3H	
	4,000	5,300	35	154	-25 ... +35° C	DALI	PC	wide	with changeover relay	51FP20DP460HR	
	Special chemical resistance	4,000	3,900 – 7,600	45	168	-35 ... +40° C	Multi / ON / OFF	PA	wide		51FP30MP480H
4,000		5,700	35	165	-25 ... +40° C	DALI	PA	wide		51FP30DP460H	
Parking	4,000	4,700	29.2	161	-30 ... +40° C	ON/OFF	PC	wide		51FG207P440H	
		70,000 h L90 / B50 at 25° C	4,700	30.8	154	-25 ... +40° C	DALI	PC	wide		51FG20DP440H
	4,000	4,700	33.8	140	-25 ... +40° C	DALI	PC	wide	HC1 with DALIeco controller	51FG20DP440HHD	
	4,000	4,700	32.4	146	-25 ... +40° C	DALI	PC	wide	HC1 with DALIpro sensor coupler	51FG20DP440HHC	
Location: exposed outdoor	4,000	4,200 – 6,100	33.5	182	-35 ... +50° C	Multi / ON / OFF	PMMA impact resistant	wide	Rated Service life up to 50,000 h L80 / B50 at 50° C	51FF40MP460H	

Monsun[®] 21

Main distinguishing feature	Colour temperature K	Luminous flux lm	Power W	Efficacy lm / W	Ambient temperature	Control	Cover	Optics	Additional information replaces ca.²	Order number
Standard-variants	4,000	2,600	18	144	-25° C ... +35° C	ON / OFF	PMMA	wide	1 × 36 W	5LS71271T24B
	4,000	4,300	31	139	-25° C ... +35° C	ON / OFF	PMMA	wide	2 × 36 W	5LS71271T44B
	4,000	2,600	20	130	-25° C ... +35° C	DALI	PMMA	wide	1 × 36 W	5LS712D1T24B
	4,000	4,300	33	130	-25° C ... +35° C	DALI	PMMA	wide	2 × 36 W	5LS712D1T44B
	4,000	2,400	18	133	-25° C ... +35° C	ON / OFF	PC	wide	1 × 36 W	5LS72271T24B
	4,000	4,000	31	129	-25° C ... +35° C	ON / OFF	PC	wide	2 × 36 W	5LS72271T44B
	4,000	4,000	33	121	-25° C ... +35° C	DALI	PC	wide	2 × 36 W	5LS722D1T44B
Emergency Lighting	4,000	4,300	30	143	+5° C ... +35° C	DALI	PMMA	wide	2 × 36 W	5LS712D1T44C3
	4,000	4,000	30	133	+5° C ... +35° C	DALI	PC	wide	2 × 36 W	5LS722D1T44C3

Includes non-replaceable LED modules of energy efficiency classes A++, A+, A (range A++ to E)

* in individual cases please check with lighting design

Monsun[®] 22

Main distinguishing feature	Colour temperature K	Luminous flux lm	Power W	Efficacy lm / W	Ambient temperature	Control	Cover	Optics	Additional information	Order number
Standard-variants	4,000	2,600	18	145	-25 ... +35° C	ON / OFF	PMMA	wide		51FB107P420A
	4,000	4,500	31	141	-25 ... +35° C	ON / OFF	PMMA	wide		51FB107P440A
	4,000	4,300	31	139	-25 ... +35° C	DALI	PMMA	wide		51FB10DP440A
	4,000	3,700	26	144	-25 ... +35° C	ON / OFF	PMMA	wide		51FB107P430A
	4,000	5,800	43	135	-25 ... +35° C	ON / OFF	PMMA	wide		51FB107P460A
	4,000	3,800	27	140	-25 ... +35° C	DALI	PMMA	wide		51FB10DP430A
	4,000	6,000	45	133	-25 ... +35° C	DALI	PMMA	wide		51FB10DP460A
	4,000	3,600	29	125	-25 ... +35° C	ON / OFF	PC	wide		51FB207P430A
	4,000	5,400	46	118	-25 ... +35° C	ON / OFF	PC	wide		51FB207P460A
	4,000	5,400	46	116	-25 ... +35° C	DALI	PC	wide		51FB20DP460A
Through wiring 5 × 2.5 mm	4,000	3,700	26	146	-25 ... +35° C	ON / OFF	PMMA	wide	5 × 2.5 mm²	51FB107P430A005
	4,000	5,800	43	135	-25 ... +35° C	ON / OFF	PMMA	wide	5 × 2.5 mm²	51FB107P460A005
	4,000	5,400	46	118	-25 ... +35° C	ON / OFF	PC	wide	5 × 2.5 mm²	51FB207P460A005
Emergency Lighting	4,000	3,800	30	128	+5 ... +25° C	ON / OFF	PMMA	wide	3 h self test	51FB107P437A3G
	4,000	6,000	49	122	+5 ... +25° C	ON / OFF	PMMA	wide	3 h self test	51FB107P467A3G
	4,000	3,800	27	140	+5 ... +25° C	DALI	PMMA	wide	3 h DALI-monitoring	51FB10DP437A3H
	4,000	6,000	45	134	+5 ... +25° C	DALI	PMMA	wide	3 h DALI-monitoring	51FB10DP467A3H
	4,000	3,600	32	113	+5 ... +25° C	ON / OFF	PC	wide	3 h self test	51FB207P437A3G
	4,000	5,400	50	108	+5 ... +25° C	ON / OFF	PC	wide	3 h self test	51FB207P467A3G
	4,000	5,400	49	110	+5 ... +25° C	DALI	PC	wide	3 h DALI-monitoring	51FB20DP467A3H
Multilumen	4,000	3,900 – 6,000	27 – 45	135	-25 ... +35° C	Multi / ON / OFF	PMMA	wide		51FB10MP460A
	4,000	3,800 – 6,000	27 – 45	134	-25 ... +35° C	Multi / ON / OFF	PMMA	medium		51FB12MP460A
	4,000	3,400 – 5,400	27 – 45	119	-25 ... +35° C	Multi / ON / OFF	PC	wide		51FB20MP460A
6,500 K	6,500	3,600 – 5,700	27 – 45	126	-25 ... +35° C	Multi / ON / OFF	PMMA	wide		51FB10MP660A
	6,500	5,700	45	126	-25 ... +35° C	DALI	PMMA	wide		51FB10DP660A
Special chemical resistance	4,000	3,700 – 5,700	27 – 45	127	-25 ... +35° C	Multi / ON / OFF	PA	wide		51FB30MP460A
	4,000	5,700	45	127	-25 ... +35° C	DALI	PA	wide		51FB30DP460A
Parking	4,000	4,800	40	120	-25 ... +35° C	ON / OFF	PC	wide		51FG207P440A
	4,000	4,800	41	118	-25 ... +35° C	DALI	PC	wide		51FG20DP440A
	4,000	4,800	44	110	-25 ... +35° C	DALI	PC	wide	HC1 with DALIeco controller	51FG20DP440AHD
	4,000	4,800	42	114	-25 ... +35° C	DALI	PC	wide	HC1 with DALIpro sensor coupler	51FG20DP440AHC

Includes non-replaceable LED modules of energy efficiency classes A++, A+, A (range A++ to E)

Monsun® 31

Main distinguishing feature	Colour temperature K	Luminous flux lm	Power W	Efficacy lm / W	Ambient temperature	Control	Cover	Optics	Order number	Additional information Length in mm
Standard-variants	4,000	2,300	19	135	-20 ... +40° C	ON / OFF	PC	diffuse	51FA207D420B	558
	4,000	3,000	22	135	-20 ... +40° C	ON / OFF	PC	diffuse	51FA207K430B	1,158
	4,000	5,100	38	135	-20 ... +40° C	ON / OFF	PC	diffuse	51FA207K450B	1,158
	4,000	3,800	28	135	-20 ... +40° C	ON / OFF	PC	diffuse	51FA207P430B	1,458
	4,000	6,700	50	135	-20 ... +40° C	ON / OFF	PC	diffuse	51FA207P460B	1,458
	4,000	2,300	19	135	-20 ... +40° C	DALI	PC	diffuse	51FA20DD420B	558
	4,000	3,000	22	135	-20 ... +40° C	DALI	PC	diffuse	51FA20DK430B	1,158
	4,000	5,100	38	135	-20 ... +40° C	DALI	PC	diffuse	51FA20DK450B	1,158
	4,000	3,800	28	135	-20 ... +40° C	DALI	PC	diffuse	51FA20DP430B	1,458
	4,000	6,700	50	135	-20 ... +40° C	DALI	PC	diffuse	51FA20DP460B	1,458
Emergency Lighting	4,000	450	5	90			PC	diffus	58FA207A403B3G	280

Monsun® 41

Colour temperature K	Luminous flux lm	Power W	Efficacy lm / W	Ambient temperature	Control	Cover	Optics	Order number	Additional information Length in mm
4,000	2,000	17	118	-20 ... +40° C	ON / OFF	PC	extremely wide	0LS2297BL0840	1,200
4,000	4,000	33	121	-20 ... +40° C	ON / OFF	PC	extremely wide	0LS2297BH0840	1,200
4,000	3,400	28	121	-20 ... +40° C	ON / OFF	PC	extremely wide	0LS2297CL0840	1,500
4,000	6,000	50	120	-20 ... +40° C	ON / OFF	PC	extremely wide	0LS2297CH0840	1,500

Includes non-replaceable LED modules of energy efficiency classes A++, A+, A (range A++ to E)

Monsun® Accessories

Monsun® 11 Extreme

Description	Order number
Anti-theft device	5LS59201
Luminaire mounting insert, ECG, for Modario® trunking rail, 5 × SE	5LS59000A
Luminaire mounting insert, DALI, for Modario® trunking rail, 5 × SE	5LS59000C

Monsun® 21

Description	Order number
Link chain, steel, galvanised	5LY9001
Link chain, stainless steel (V2A)	5LY9002
Quick-release link, stainless steel (V2A)	5LY9004
Mounting-Set, for tool-free installation of the luminaire on the DUS® mounting rail	5LS44002
Mounting-Set, wall-fastening	5LS44003
Anti-theft device	5LS59201

Monsun® 12 and Monsun® 22

Description	Order number
Cover PMMA	59FW001
Cover PC	59FW002
Cover PA	59FW003
Cover Facade	59FW004
Through-wiring-set 3 × 2.5 mm ²	58FV003
Through-wiring-set 5 × 2.5 mm ²	58FV005
Through-wiring-set 7 × 2.5 mm ²	58FV007
Through-wiring-set 5 × 2.5 mm ² for continuous LOR	58FV009
Link chain, steel, galvanised	5LY9001
Link chain, stainless steel (V2A)	5LY9002
Quick-release link, stainless steel (V2A)	5LY9004
Assembly spring Licross®	58FM001
Rotatable wall fastening	58FM002
Pipe clip fixing	58FM003
Pipe clip fixing 2	58FM004
Mounting set GRP rail	58FM005
Fixing reinforcement	58FM006
Wall fastening	58FM007
Assembly spring DUS®	58FM008
Anti-theft device	5LS59201
Licross® mounting rail 1,590 mm, 1-length	58FS001
Licross® mounting rail 3,180 mm, 2-length	58FS002
Licross® mounting rail 4,770 mm, 3-length	58FS003
Connector Licross® mounting rail	58FS005
End caps Licross®, white	59TL1S
Cable infeed M20	59FT001
Cable infeed set M25	58FT002
Cable infeed, twin cable gland	58FV00D
Cable infeed M20, cable gland with climate membrane	58FT003
Cable infeed M25 (incl. Extension)	58FT004
Cable infeed M25, cable gland with climate membrane (incl. Extension)	58FT005
Sensor Retrofit-Set DALIeco-Controller, Master, Sensor HC1 (formerly 5LS792HD1)	58FSHD1
Sensor Retrofit-Set DALIpro-Sensor coupler Slave, Sensor HC1 (formerly 5LS792HC1)	58FSHC1

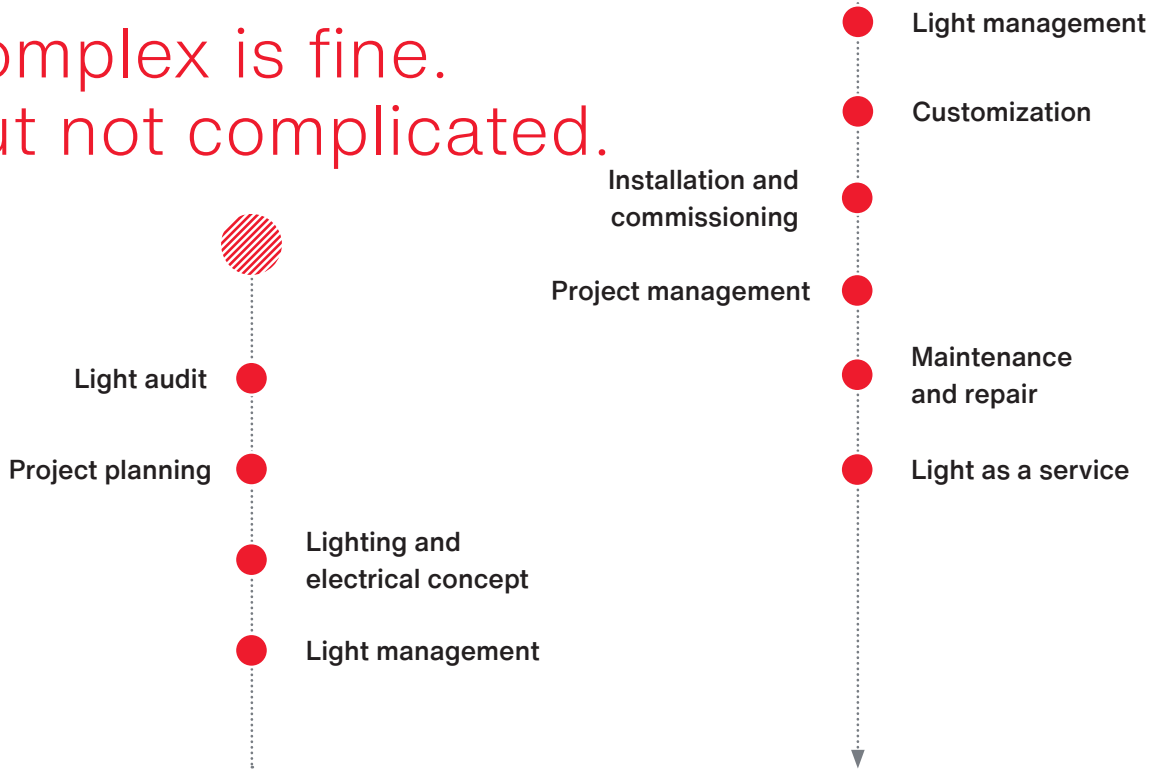
Monsun® 31

Description	Order number
Link chain, steel, galvanised	5LY9001
Link chain, stainless steel (V2A)	5LY9002
Quick-release link, stainless steel (V2A)	5LY9004

Monsun® 41

Description	Order number
Cable infeed, twin cable gland, PC, for cables Ø 8..12mm	0LS22901
Link chain, steel, galvanised	5LY9001
Link chain, stainless steel (V2A)	5LY9002
Quick-release link, stainless steel (V2A)	5LY9004

Complex is fine. But not complicated.



Whether functional lighting or complex lighting solutions – each project is individual and depends on the lighting requirements, the existing conditions and the architectural demands. SITECO supports you in defining these parameters and converting them into an overall concept. We also speak your language – putting complex technologies into plain words. This is how we make sure that your specific requirements are taken into account and successfully implemented in the project.

SITECO – the planning and development partner for your lighting solution.

Intelligent expansion, control and monitoring of Monsun®: With SITECO Connect.

From simple plug & play lighting controls to integrated software systems and SITECO HCL ^{live} applications – SITECO Connect offers you perfectly tailored solutions for local or central control, monitoring and use of your lighting system as a data highway. We are happy to support you throughout the entire process: planning, configuration and commissioning. For further information please visit www.siteco.com/solutions/siteco-connect





Project: VW parking garage, Baunatal, Germany
Product: Monsun® 11 Xtreme

Contact.

Siteco GmbH

Georg-Simon-Ohm-Str. 50
83301 Traunreut, Germany
Tel. +49 8669 330
info@siteco.com

siteco.com

Technical Support

Tel. +49 8669 338 44
technicalsupport@siteco.com