



## Owner's Manual

# RM-2

## Two-Way Wi-Fi Remote Control



*This remote control was Custom Programmed for you by:*

*For questions about your Custom Programming call:*

---

---

*Custom Programming of a complex home theater and/or a multi-room system is one of the most challenging tasks within an audio/video installation. It involves an intimate knowledge of how the components interact and exact details on the proper sequences of control.*

*Only a ccGEN2 dealer has the requisite experience and training to quickly and effectively customize a remote control for true automated operation.*

*Congratulations on your choice!*

*RM-2 Owner's Manual © 2013 Universal Remote Control, Inc.*

*The information in this owner's manual is copyright protected. No part of this manual may be copied or reproduced in any form without prior written consent from Universal Remote Control, Inc.*

*UNIVERSAL REMOTE CONTROL, INC. SHALL NOT BE LIABLE FOR OPERATIONAL, TECHNICAL OR EDITORIAL ERRORS/OMISSIONS MADE IN THIS MANUAL.*

*The information in this owner's manual may be subject to change without prior notice.*

*URC - Control the Experience is a registered trademark of Universal Remote Control, Inc.*

*ccGEN2 is a registered trademark of Universal Remote Control, Inc.*

*All other brand or product names are trademarks or registered trademarks of their respective companies or organizations.*



500 Mamaroneck Avenue, Harrison, NY 10528  
Phone: (914) 835-4484 Fax: (914) 835-4532

Congratulations!	1
Features and Benefits	1
Before Getting Started	2
Parts Guide	2
Connecting the Battery Pack	3
Using the Charging Base	3
Two-Way via Wi-Fi	3
Using the RM-2	4
Displaying the Settings Menu	5
Sleep Settings	6
Wireless Network Settings	6
Brightness	6
System	7
Button Light	7
Power	7
Date and Time	7
Sound	8
Pickup	8
Factory Default	8
Exit	8
Specifications	9
Limited Warranty Statement	10
End User Agreement	12
Precautions and Information Concerning Rechargeable Lithium Polymer Batteries	13
Federal Communication Commission Interference Statement	14
Declaration of Conformity	15

## Congratulations!

---

Thank you for purchasing the RM-2 Two-Way Wi-Fi remote control for your ccGEN2 system. This remote offers two-way control of your connected devices throughout the home or small office space. With the integrated Rooms Menu, controlling devices in other areas is simple using the RM-2's Two-Way Wi-Fi communication.

## Features and Benefits

---

- **Quick Connect Wi-Fi**

When picked up, the RM-2 connects to Wi-Fi within moments to control your ccGEN2 system and devices.

- **Two-way meta-data feedback**

Experience two-way feedback right on the remote's screen when used with compatible devices like URC's iPod Dock (PSX-2), or selection of IP Cameras. Enjoy the same feedback when used in conjunction with an ever expanding line of 3rd party products (speak with your custom professional to learn more.)

- **Pick-up sensor**

Lifting the remote immediately wakes it up, turns on the backlight, the LCD screen, and quickly connects to the local Wi-Fi for control of your ccGEN2 system.

- **Rechargeable Lithium Polymer Battery and charger base**

Save money and protect the environment by using the included charging base and rechargeable lithium ion polymer battery.

## Before Getting Started

---

- **Only for use in a ccGEN2 System**

When used with a CP-1 Central Processor, the RM-2 can control your system without being in line-of-sight of the equipment by sending the commands over your home network.

- **Programmable only by a URC certified professional programmer onsite or offsite via the Internet**

To fully automate your audio/video system, the programmer must have detailed knowledge of each component, LAN configuration, Wi-Fi optimization and how the system is connected and operated. With the ability to connect the RM-2 to a CP-1 Central Processor, your installer can program the remote, with your permission, from a remote location should the need arise. Only a trained and certified professional audio/video installer can install a RM-2 remote control in a timely and efficient manner.

## Parts Guide

---

What's included with the RM-2:

- RM-2 Wi-Fi Remote Control
- Lithium Ion Polymer Rechargeable Battery
- AC Power Adapter for Charger Base
- Charger Base
- Room Labels
- Cleaning Cloth
- Owner's Manual

## Connecting the Battery Pack

---

Press the spring lock down to unlock and remove the cover. The battery is included in the box when shipped from the factory. Place the battery into the battery compartment, making sure to align the contacts on the battery to the contacts on the RM-2. The battery will snap into place when aligned properly. Replace the cover.

## Using the Charging Base

---

Plug the 6V DC adapter into a power outlet and into the rear of the charging base. (Also plugs into the remote for direct charging.) Gently place the RM-2 into the cradle. The remote automatically aligns itself to the contacts on the charging base. The status light should immediately illuminate.

- Red indicates that it is charging.
- Blue shows that it is fully charged.



## Two-Way via Wi-Fi

---

To use the RM-2 with any two-way companion product, it must be configured by your installer to be part of a LAN (local area network) via a Wi-Fi b/g access point or router. This is not user configurable. If you have any questions, consult your custom installer.

## Using the RM-2

The RM-2's Main Menu pages display the activities and devices in your system. Press the **Main** page button to view your activities and devices. Large systems may have more than one page. Press either of the **Page** buttons to view additional pages.

Once within a Device or Activity, the Page buttons may reveal additional buttons. Press any button adjacent to the screen, to select an activity or device.

Press the **Main** button to return to that page and select a new device or activity.



## Displaying the Settings Menu

You can enter the Settings menu by pressing and holding the **Main** and **Enter** buttons for three seconds. When the Settings menu appears, any further action must be completed within 60 seconds, at which point the remote will revert back to the Main Menu screen.

Use the **Page** buttons to navigate between the two Settings pages. To select a setting, press the button on the LCD screen. To go back a step or to get out of the **Settings** menu, press the **Main** button.



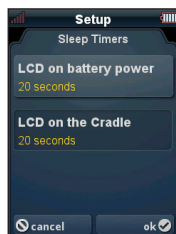
Page 2 of the Settings Screen

Page buttons reveal the rest of the settings.



## Sleep Settings

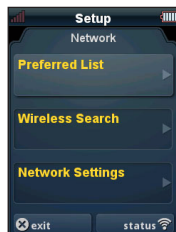
You can adjust the amount of time the LCD remains ON when the remote is not in use. The time can be set independently based on whether the remote is using battery power or sitting on the cradle.



Once the Sleep Timers are adjusted, press the **Ok** button. Pressing the **Cancel** button will revert to the remotes last saved setting.

## Wireless Network Settings

**WARNING!** Only use this button when instructed to by Technical Support or your Custom Professional. The screen displays network information about your RM-2 and the connected wireless network. Do not make any changes on this screen!



## Brightness

Adjust the screen brightness by pressing the adjacent hard buttons to increase or decrease the brightness level.

Once the brightness is adjusted, press the **Ok** button. Pressing the **Cancel** button will revert to the remotes last saved setting.



*Note: The higher the brightness, the faster the batteries will deplete.*

## System

The System Information screen displays data about your RM-2's Operating System, Memory etc.

Press the **More** button to view further system information. Pressing the **Cancel** button will exit to the remote's settings menu.



## Button Light

You can adjust the brightness of the LEDs that backlight the buttons of the RM-2. Press the adjacent hard buttons to increase or decrease the button light level.

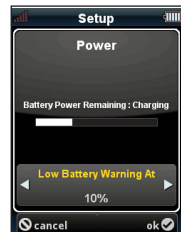
Once the button light is adjusted, press the **Ok** button. Pressing the **Cancel** button will revert to the remote's last saved setting.



## Power

You can display the remaining battery level by selecting Power. You can also adjust when the Low Battery warning screen will appear.

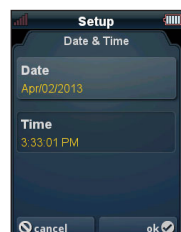
Once the power is adjusted, press the **Ok** button. Pressing the **Cancel** button will revert to the remote's last saved setting.



## Date and Time

The RM-2's date and time has been previously set. If you need to, you can adjust the date and time by changing the settings on this screen.

After adjusting the date and time, press the **Ok** button. Pressing the **Cancel** button will revert to the remote's last saved setting.

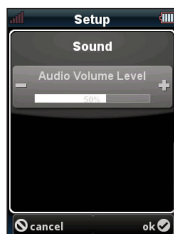


## Sound

---

You can adjust the button beep of the RM-2. Press the adjacent hard buttons to increase or decrease the volume level.

Once the sound is adjusted, press the **Ok** button. Pressing the **Cancel** button will revert to the remotes last saved setting.

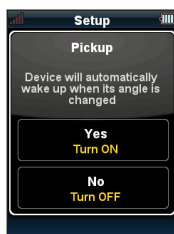


## Pickup

---

You can set your RM-2 to turn on when the remote is picked up. Simply select **Yes** (Turn ON) or **No** (Turn OFF).

Once the pickup is adjusted, press the **Ok** button. Pressing the **Cancel** button will revert to the remote's last saved setting.



## Factory Default

---

**WARNING!** Only use this button when instructed to by Technical Support. It resets the memory of the RM-2 to the factory settings. All your programming will be lost!

## Exit

---

When you have finished adjusting Settings, simply press the **Exit** button to return to normal operation.

## Specifications

---

**Microprocessor:** ARM9 454MHz

**RAM:** 64Mbyte Mobile DDR

**NAND:** 128Mbyte

**LCD:** 2 Inch Screen (240 by 320) LCD Backlighting by LED

**Sound:** Mono 1 watt

**Devices:** Supports up to 255 Devices with text, less with heavy graphics

**Usage Pages:** Supports up to 255 Pages on each Device with text, less with heavy graphics usage

**Macro Capability:** Up to 255 steps each, however nesting is allowed

**Wi-Fi:** IEEE 802.11b/g/n

**Battery:** Lithium polymer, 1,960mAh

**Battery Charging Time:** 5 Hours

**Size:** 8.46" H x 2.04" W x 1.02" D

**Battery Warranty:** 1 Year

**Weight (with battery loaded):** 6.04 oz

## Limited Warranty Statement

---

### 1. Limited Warranty and Disclaimers

Universal Remote Control, Inc. ("URC") warrants that the URC equipment shall be free from defects in material and workmanship under normal usage for one (1) year from purchase when such is purchased from URC. **This limited warranty is valid only in the United States of America.** URC warrants that the software will substantially conform in any material respect to its functional specifications at the time of delivery. URC SHALL NOT BE LIABLE FOR OPERATIONAL, TECHNICAL OR EDITORIAL ERRORS AND/OR OMISSIONS MADE IN THE URC DOCUMENTATION. URC DOES NOT WARRANT THAT THE URC SOFTWARE IS BUG-FREE OR ERROR FREE OR THAT THERE ARE NO ERRORS/BUGS IN THE URC SOFTWARE.

URC warrants that at the time of purchase the URC equipment and the URC software complied with all applicable regulations and policies of the Federal Communications Commissions ("FCC") regarding electromagnetic interference caused by electronic/computing devices and to the extent that the URC equipment and/or the URC software fails to so comply, URC shall, at its own expense, take all reasonable measures to promptly cause such to comply.

**URC equipment purchases from other than an authorized URC dealer or distributor are without warranty.**

THIS LIMITED WARRANTY DOES NOT COVER TECHNICAL ASSISTANCE FOR HARDWARE OR SOFTWARE USAGE EXCEPT AS EXPRESSLY PROVIDED FOR HEREIN, THE EQUIPMENT, SOFTWARE AND DOCUMENTATION OF URC ARE SUPPLIED "AS IS" WITHOUT ANY WARRANTY, EXPRESS, STATUTORY OR IMPLIED, OF ANY KIND. TO THE MAXIMUM EXTENT PERMITTED BY APPLICABLE LAW, URC EXPRESSLY DISCLAIMS ALL WARRANTIES, EXPRESS, STATUTORY OR IMPLIED, INCLUDING BUT NOT LIMITED TO THE WARRANTIES OF MERCHANTABILITY AND FITNESS FOR A PARTICULAR PURPOSE. URC DOES NOT WARRANT, GUARANTEE, OR MAKE ANY REPRESENTATIONS REGARDING THE USE OF, OR THE RESULTS OF THE USE OF, THE EQUIPMENT, SOFTWARE OR DOCUMENTATION IN TERMS OF CORRECTNESS, ACCURACY, RELIABILITY OR OTHERWISE.

EXCEPT AS EXPRESSLY PROVIDED FOR HEREIN, TECHNICAL SERVICES ARE SUPPLIED "AS IS", WITHOUT ANY WARRANTY, EXPRESS, STATUTORY OR IMPLIED, OF ANY KIND. TO THE MAXIMUM EXTENT PERMITTED BY APPLICABLE LAW, URC EXPRESSLY DISCLAIMS ALL WARRANTIES, EXPRESS, STATUTORY OR IMPLIED, INCLUDING BUT NOT LIMITED TO THE WARRANTIES OF QUALITY OR REASONABLE

SKILL AND CARE, OR OUTCOME OR RESULTS.

WITHOUT IN ANY WAY LIMITING THE GENERALITY OF THE OTHER PROVISIONS HEREIN, WARRANTY DOES NOT COVER: (I) DAMAGE FROM MISUSE, NEGLIGENCE OR ACTS OF NATURE, (II) MODIFICATIONS, (III) INTEGRATION WITH THIRD PARTY CONTENT (IV) BEYOND THE WARRANTY PERIOD AND/ OR FAILURE TO FOLLOW URC WARRANTY CLAIM PROCEDURE.

The warranty limitations and warranty disclaimers may not apply to end user in whole or in part, where such are restricted or excluded by applicable law and such shall apply to the maximum extent permitted by applicable law.

In the event of any warranty claim, URC will, at its sole option, repair the URC equipment using new or comparable rebuilt parts, or exchange the URC equipment for new or rebuilt equipment. **In the event of a defect, these are the end user's exclusive remedies.**

All the URC equipment returned for service, exchange or repair require an RGA number. To obtain an RGA number, you must complete a Return Request Form which you may obtain by calling (914) 835-4484 or contacting URC at [returnrequest@universalremote.com](mailto:returnrequest@universalremote.com). To obtain warranty service, end user must deliver the URC equipment, freight prepaid, in its original packaging or packaging affording adequate protection to URC at 420 Columbus Avenue, Valhalla, NY 10595. It is end user's responsibility to backup any macro programming, artwork, software or other materials that may have been programmed into the unit. It is likely that such data, software, or other materials will be lost during service and URC will not be responsible for any such damage or loss. A dated purchase receipt, bill of sale, installation contract or other verifiable proof of purchase is required. For the URC equipment support and other important information, please visit URC's website available at [www.universalremote.com](http://www.universalremote.com) or call the Customer Service Center at (914) 835-4484.

This limited warranty only covers the URC equipment issues caused by defects in material or workmanship during ordinary consumer use. It does not cover product issues caused by any other reason, including but not limited to product issues due to commercial use, acts of God, third-party installation, misuse, limitations of technology, or modification of or to any part of the URC equipment. This limited warranty does not cover the URC equipment sold as used, as is, refurbished, so called "B stock" or consumables (such as batteries). This limited warranty is invalid if the factory applied serial number has been altered or removed from the URC equipment. **This limited warranty specifically excludes the URC equipment sold by unauthorized resellers.**

With the exception of URC's IR-only, broad-based consumer remotes, none of URC's PC programmable remotes or any of our ccGEN2™ whole-house

equipment are authorized for online internet sales. Buying URC's PC programmable remotes or any of our ccGEN2™ whole-house equipment online means buying equipment that does not have a URC's limited warranty. Such equipment is not eligible for URC tech support or software support, either.

## **2. URC'S Limitations of Liability**

IN NO EVENT SHALL URC BE LIABLE FOR INDIRECT, SPECIAL, INCIDENTAL, EXEMPLARY, PUNITIVE OR CONSEQUENTIAL DAMAGES OF ANY KIND OR LOSS OF PROFITS OR BUSINESS OPPORTUNITY, EVEN IF URC IS ADVISED OF THE POSSIBILITY OF SUCH DAMAGES.

IN NO EVENT SHALL URC BE LIABLE FOR LOSS OF OR DAMAGE TO DATA, COMPUTER SYSTEMS OR COMPUTER PROGRAMS. URC'S LIABILITY, IF ANY, FOR DIRECT DAMAGES OF ANY FORM SHALL BE LIMITED TO ACTUAL DAMAGES, NOT IN EXCESS OF AMOUNTS PAID BY END USER FOR THE URC EQUIPMENT.

IN NO EVENT SHALL URC BE LIABLE FOR ANY EVENTS BEYOND ITS CONTROL, INCLUDING ANY INSTANCE OF FORCE MAJEURE. IN NO EVENT SHALL URC BE LIABLE FOR THE ACTS OR OMISSIONS OF END USER OR ANY THIRD PARTY.

THE LIMITATIONS OF LIABILITY MAY NOT APPLY TO END USER IN WHOLE OR IN PART, WHERE SUCH ARE RESTRICTED LIMITED OR EXCLUDED BY APPLICABLE LAW AND SUCH SHALL APPLY TO THE MAXIMUM EXTENT PERMITTED BY APPLICABLE LAW.

URC SHALL NOT BE HELD RESPONSIBLE FOR THE STATEMENTS MADE BY OTHERS.

SOME STATES OR JURISDICTIONS DO NOT ALLOW THE EXCLUSION OR LIMITATION OF INCIDENTAL OR CONSEQUENTIAL DAMAGES, OR ALLOW LIMITATIONS ON HOW LONG AN IMPLIED WARRANTY LASTS, SO THE ABOVE LIMITATIONS OR EXCLUSIONS MAY NOT APPLY TO END USER. THIS LIMITED WARRANTY GIVES END USER SPECIFIC LEGAL RIGHTS AND END USER MAY HAVE OTHER RIGHTS WHICH VARY FROM STATE TO STATE OR JURISDICTION TO JURISDICTION.

## **End User Agreement**

---

The terms and conditions of the End User Agreement is available at [www.universalremote.com/eua.php](http://www.universalremote.com/eua.php) shall apply.

## Precautions and Information Concerning Rechargeable Lithium Polymer Batteries

---

- ◆ If you will not be using your remote control for an extended period of time, be sure to remove the battery
- ◆ Do not attempt to disassemble, alter or apply heat to the battery.
- ◆ Use care to avoid dropping the battery or subjecting it to severe impact that could damage the case.
- ◆ The battery should not be immersed in water.
- ◆ Risk of explosion if battery is replaced by an incorrect type.
- ◆ Dispose of used batteries according to the instructions.
- ◆ Lithium Polymer Batteries are recyclable. For the address of a recycle drop-off location near you call toll free 1-800-822-8837 or visit <http://www.rbc.com>



## Federal Communication Commission Interference Statement

---

This equipment has been tested and found to comply with the limits for a Class B digital device, pursuant to part 15 of the FCC Rules. These limits are designed to provide reasonable protection against harmful interference in a residential installation. This equipment generates, uses and can radiate radio frequency energy and, if not installed and used in accordance with the instructions, may cause harmful interference to radio communications. However, there is no guarantee that interference will not occur in a particular installation. If this equipment does cause harmful interference to radio or television reception, which can be determined by turning the equipment off and on, the user is encouraged to try to correct the interference by one more of the following measures:

- ◆ Reorient or relocate the receiving antenna.
- ◆ Increase the separation between the equipment and receiver.
- ◆ Connect the equipment into an outlet on a circuit different from that to which the receiver is connected.
- ◆ Consult the dealer or an experienced radio/TV technician for help.

### **Warning!**

Changes or modifications not expressly approved by the manufacturer could void the user's authority to operate the equipment.

Note : The manufacturer is not responsible for any Radio or TV interference caused by unauthorized modifications to this equipment. Such modifications could void the user's authority to operate the equipment.

### **FCC Caution**

This device complies with Part 15 of the FCC Rules. Operation is subject to the following two conditions: (1) this device may not cause harmful interference, and (2) this device must accept any interference received, including interference that may cause undesired operation.

Any changes or modifications not expressly approved by the party responsible for compliance could void the authority to operate equipment.

The antenna(s) used for this transmitter must not be co-located or operating in conjunction with any other antenna or transmitter.

### **Federal Communication Commission (FCC) Radiation Exposure Statement**

This remote device is approved as a hand-held and hand-operated only portable (relative to hand) device which is normally operated at 20 cm from a person's body.

# Declaration of Conformity

Company Name : OH SUNG ELECTRONICS CO., LTD.  
 Company Address : #181 GONG DAN-DONG, GUMI, GYEONG BUK,  
 REPUBLIC OF KOREA  
 Contact Information : Phone: +82-54-468-7281, Fax: +82-54-461-8368  
 Brand Name : UNIVERSAL remote control  
 Product Name : TWO-WAY Wi-Fi REMOTE  
 Model Name : RM-2

This product herewith complies with the requirements of EMC Directive (2004/108/EC) and R&TTE Directive(1995/5/EC) issued by the Commission of the European Community

Compliance with these directives implies conformity to the following European Community

- EMC Directive
  - EN 55022 (2010)
  - EN 55024 (2010)
  - EN 61000-3-2 (2006) + A1 (2009) + A2 (2009)
  - EN 61000-3-3 (2008)
- R&TTE Directive
  - EN 60950-1 (2006) + A11 (2009) + A1 (2010) + A12 (2011)
  - ETSI EN 301 489-1 V1.9.2 (2011), ETSI EN 301 489-17 V2.1.1 (2012)
  - ETSI EN 300 328 V1.7.1 (2006)

List of test reports and/or certificate verified compliance with the standards above

- EMC Directive
  - Report No.
  - Testing Laboratory : Gumi College EMC Center
- R&TTE Directive
  - Certificate No.
  - Certificate Body : SIEMIC (No. 2200)

Date of issue : \_\_\_\_\_ March 1, 2013 \_\_\_\_\_

Name and signature of authorized person : \_\_\_\_\_ Quality Assurance Team \_\_\_\_\_  
 OH SUNG ELECTRONICS CO., LTD.





*500 Mamaroneck Avenue, Harrison, NY 10528*

*Phone: (914) 835-4484 Fax: (914) 835-4532*

[www.universalremote.com](http://www.universalremote.com)



OCE-0073E Rev 01