

SONY

make.believe

2012.9

Sony Overseas Models Products Catalog

索尼海外规格产品目录
オーバーシーズモデル総合カタログ

The latest Sony products you can enjoy around the world

您在全球范围内可享受到的最新索尼产品



**Sony
Overseas
Models**

索尼海外规格产品



DSC-TX200(JE)



HDR-PJ760(JE)



NWZ-W262(JE)

sony.jp/overseas/



Sony Overseas Models

索尼海外规格产品

Warranty service covering 53 countries and regions

在53个国家和地区均可享受保修服务

Latin America

Puerto Rico / Chile / Panama / Venezuela / Mexico / Costa Rica / Ecuador / El Salvador / Guatemala / Honduras / Nicaragua

Asia^{*1}

Singapore / Malaysia / Hong Kong / Korea / Philippines / Maldives / Thailand / Taiwan / India / Indonesia / Japan / China^{*2}

North America

U.S.A. / Canada

Oceania^{*1}

Australia / New Zealand / Fiji / Tahiti / New Caledonia

Middle East^{*1}

U.A.E. / Qatar / Bahrain / Lebanon / Tunisia

Europe^{*3}

Belgium / Switzerland / Germany / Denmark / Spain / Portugal / Austria / Greece / France / Finland / Italy / Norway / Netherlands / Sweden / U.K. / Russia / Ukraine

Africa^{*1}

South Africa

How about Sony Overseas Models sold only in Japan as a souvenir?

买个限定在日本销售的索尼海外规格产品作为礼物吧?



Digital Still Camera 数码相机
DSC-TX66(JE) P19



Digital Still Camera 数码相机
DSC-WX170(JE) P20



Card size radio 卡片收音机
SRF-220(JE) P27



Multi-lingual menus and instruction manuals 多国语言菜单和使用说明书

Multi-lingual menus and instruction manuals are also available for Sony Overseas Models

索尼海外规格产品还会提供多国语言菜单和使用说明书

Sony Overseas Models product instructions come in various languages, such as English, Chinese, Korean, German, French, Spanish, Portuguese and Russian. (Available languages depend on the model) The menu display on the products of certain "Handycam," "Cyber-shot," etc. are able to display several languages besides English. (Available languages depend on the model) 索尼海外规格产品的使用说明书提供英语、中文、韩语、德语、法语、西班牙语、葡萄牙语和俄语等多种语言。(提供的语言取决于机型)部分"Handycam"数码相机、"Cyber-shot"数码相机等产品的菜单显示能够显示英语等多国语言。(提供的语言取决于机型)

After-sales service^{*4} 售后服务^{*4}

The Overseas Models are covered by a common warranty in a wide range of countries/regions

海外规格产品在许多国家/地区均可享受保修服务

Common warranty service is offered in 53 countries/regions. 53个国家/地区享受保修服务。

In case you should experience problems with Japanese version products, you may face a number of difficulties when trying to resolve these outside of Japan. For example, there may be no spare parts available, or it may take long repair time or additional fees. However, with Sony Overseas Models, you automatically receive a common 1 year warranty, which is valid in 53 countries/regions around the world. This ensures you free 1 year coverage on your purchased products.

如果遇到日语版本产品方面的问题，尝试在日本以外的地区解决可能会面临许多困难。例如，可能没有备件，维修时间过长或产生额外费用。但是对于索尼海外规格产品，可自动获得在全球53个国家/地区有效的1年保修服务，确保您所购买产品享受1年免费保修。

^{*1} For Middle Eastern, African, Asian or Oceanian countries and regions not listed above, please Email us from the "Contact Us" section at: <http://www.css.ap.sony.com> 有关上述未列的中东、非洲、亚洲或大洋洲国家和地区，请在下列网址的"联系我们"网页中发送电子邮件给我们：<http://www.css.ap.sony.com> ^{*2} China Limited Warranty sticker should be attached on the warranty card. 保修卡上须附有中国保修贴条。 ^{*3} For European countries not listed above, please contact: The European Sony Customer Care Center in Belgium. 有关上述未列的欧洲国家，请联系：位于比利时的欧洲索尼客服中心。 ^{*4} Warranty services for some products may not be provided, or differ in some countries and regions. For more details, please consult your nearest Sony Overseas Models dealers in Japan. 部分产品可能无法提供保修服务，或者因国家和地区而异。如需了解详情，请就近向日本的索尼海外规格产品经销商联系咨询。

Broadcasting System 广播系统

The broadcasting system differs for each country and region. Please confirm the system used in your region. 广播系统因国家和地区而异。请确认所在地区所使用的系统类型。

| Country / Region 国家/地区 | Voltage & frequency 电压与频率 | Color system 彩色制式 | | | Channel system 频道系统 | | | | | | | Broadcasting system 广播系统 | | |
|---------------------------|------------------------------|-----------------------|--------------|------------------|------------------------|------------------|------------------|--------------|------------------------------|----------------|--------------|-----------------------------|--------------|---|
| | | NTSC/3.58 制式(3.58) | PAL PAL制式 | SECAM SECAM制式 | VHF VHF频段 | | | | UHF UHF频段 | | | VHF VHF频段 | UHF UHF频段 | |
| | | | | | American 美洲 | W.European 西欧 | E.European 东欧 | Others 其他 | American 美洲 | European 欧洲 | Others 其他 | | | |
| Japan | 100/200V, 50/60Hz | ★ | | | | | | | Japanese | | | | M | M |
| Argentina | 220V, 50Hz | | | | ★ | | | | | | | | N | |
| Australia | 240/250V, 50Hz | | | | | | | | Australian | | | | B | G |
| Austria | 220/230V, 50Hz | | | | | | | | | | | | B | G |
| Belgium | 220/230V, 50Hz | | | | | | | | | | | | B | H |
| Canada | 120V, 60Hz | ★ | | | ★ | | | | | ★ | | | M | M |
| Canary Islands | 127/220V, 50Hz | | | | | | | | | | | | B | G |
| Chile | 220V, 50Hz | ★ | | | ★ | | | | | | | | M | |
| China | 220V, 50Hz | | | | | | | | Chinese | | | | D | |
| Czech (Rep.) | 220V, 50Hz | | | ▲ | | | | ▲ | | | | E. European | D | K |
| Denmark | 220/230V, 50Hz | | | | | | | | | | | | B | G |
| Finland | 220/230V, 50Hz | | | | | | | | | | | | B | G |
| Germany | 220/230V, 50Hz | | | | | | | | | | | | B | G |
| Greece | 220/230V, 50Hz | | | ▲ | | | | | | | | | B | G |
| Hong Kong | 220V, 50Hz | | | | | | | | | | | | | I |
| India | 220/230V, 50Hz | | | | | | | | | | | | B | |
| Indonesia | 127/220V, 50Hz | | | | | | | | | | | | B | |
| Iran | 220/230V, 50Hz | | | ▲ | | | | | | | | | B | |
| Iraq | 220V, 50Hz | | | ▲ | | | | | | | | | B | |
| Italy | 220V, 50Hz | | | | | | | | Italian | | | | B | G |
| Kenya | 240V, 50Hz | | | | | | | | | | | | B | |
| Korea (D.P.R.) | 220V, 60Hz | | | | | | | ▲ | | | | | D | |
| Korea (Rep.) | 110/220V, 60Hz | ★ | | | ★ | | | | | ★ | | | M | M |
| Malaysia | 240V, 50Hz | | | | | | | | | | | | B | |
| Mexico | 120/220V, 60Hz | ★ | | | ★ | | | | | ★ | | | M | M |
| Netherlands | 220/230V, 50Hz | | | | | | | | | | | | B | G |
| New Caledonia | 220V, 50Hz | | | ▲ | | | | | French O.S.T. New Zealand | | | | K1 | |
| New Zealand | 230/240V, 50Hz | | | | | | | | | | | New Zealand | B | G |
| Nigeria | 230V, 50Hz | | | | | | | | | | | | B | G |
| Norway | 230V, 50Hz | | | | | | | | | | | | B | G |
| Pakistan | 220/230V, 50Hz | | | | | | | | | | | | B | |
| Peru | 220V, 60Hz | ★ | | | ★ | | | | | ★ | | | M | M |
| Philippines | 230/240V, 60Hz | ★ | | | ★ | | | | | | | | M | |
| Poland | 220V, 50Hz | | | | | | | | | | | E. European | D | K |
| Portugal | 220/230V, 50Hz | | | | | | | | | | | | B | G |
| Russia | 127/220V, 50Hz | | | ▲ | | | | ▲ | | | | E. European | D | K |
| Saudi Arabia | 127/220V, 60Hz | | | ▲ | | | | | | | | | B | G |
| Singapore | 230V, 50Hz | | | | | | | | | | | | B | |
| South Africa | 220/230/250V, 50Hz | | | | | | | | | | | South African | I | I |
| Spain | 127/220/230V, 50Hz | | | | | | | | | | | | B | G |
| Sweden | 220/230V, 50Hz | | | | | | | | | | | | B | G |
| Switzerland | 220/230V, 50Hz | | | | | | | | | | | | B | G |
| Taiwan | 110V, 60Hz | ★ | | | ★ | | | | | | | | M | |
| Thailand | 220V, 50Hz | | | | | | | | | | | | B | |
| Turkey | 220V, 50Hz | | | | | | | | | | | | B | G |
| U.K. | 240V, 50Hz | | | | | | | | | | | U.K. | I | |
| U.S.A. | 120V, 60Hz | ★ | | | ★ | | | | | ★ | | | M | M |

| Color system 彩色制式 | Channel system 频道系统 | Broadcasting system 广播系统 | Power supply 电源 |
|----------------------|--|---|---------------------------|
| ▲/★ PAL / SECAM | VHF VHF频段 W. & E. European / Moroccan / Chinese / Italian / French O.S.T. / South African / Irish CATV Sor-Sos, Si-S41 / Australian / New Zealand | UHF UHF频段 European / U.K. / Australian / New Zealand | AC 110 to 240 V, 50/60 Hz |
| ★ NTSC/3.58 | American / Japanese / CATV A-6-W-64 | UHF UHF频段 American / Japanese | |

●The power supply situation and broadcasting system of each country may be changed without a preliminary announcement. You may obtain reconfirmation by yourself before purchase. ●The televisions listed in this catalog cannot be used in Argentina, Brazil, Laos, France, Paraguay or Uruguay. Please ask your Sony dealer for help when making your purchase. ●每个国家的供电情况和广播系统均有可能在未事先通知的情况下发生变更。请在购买产品之前，自行重新确认。 ●本目录中所列电视机型号不适用于阿根廷、巴西、老挝、法国、巴拉圭和乌拉圭国家。在购买产品时，请向当地的索尼产品经销商咨询。

INDEX

目录

P4 Digital Camcorder
数码摄像机

P12 Portable Speaker for Camcorder
摄像机专用便携式扬声器

P21 Digital Camcorder Accessories
数码摄像机配件

P13 Digital Recording Binoculars
摄影望远镜

P14 Digital Still Camera
数码相机

P21 Digital Still Camera Accessories
数码相机配件

P22 Interchangeable Lens Digital Camera
数码微单相机 / 数码单反相机

P26 Digital Photo Frame
数码相框

P26 Recording Media
索尼存储卡

P27 Radio
收音机

P28 Walkman®
MP3播放器

P29 Compact Cassette Recorder
小型盒带录音机

P29 CD Walkman®
CD播放器

P30 Headphones
耳机

P32 Speaker
扬声器

P33 IC Recorder
数码录音棒

P34 Specifications
规格表

HANDYCAM®

Digital Camcorder
数码摄像机

Give Joy. Share with "Handycam"

用“Handycam”数码摄像机展现乐趣、分享欢乐。

Capture the moments, true to life, in HD (High Definition). With "Handycam," 1920 x 1080 recording — finely detailed HD video is in your hands.

高清捕捉真实瞬间。“Handycam”数码摄像机成就1920x1080录制——精致高清视频在握。



"Full HD 1080" refers to consumer electronics products designed, manufactured, and sold by the Sony Corporation that have the capability of recording, display and/or playback of HD (High Definition) images with more than 1080 vertical scanning lines.

"全高清1080"是指具有录制、显示和/或播放1080以上垂直扫描线高清影像功能的消费类电子产品。由索尼公司设计、制造和销售。

Built-in Projector

内置投影机

HDR-PJ760 / PJ720 / PJ600 / PJ580 / PJ260 / PJ200

Share Anywhere with the Built-in Projector and High Quality Speaker

利用内置投影机和高品质立体扬声器随时随地分享

Watching your favorite memories on a big screen is no longer limited to your living room. Packed with a built-in projector and a pair of high quality stereo speakers^{*1}, Our projector model allows you to easily and instantly share your latest adventure with your friends and family at a bar, in a camp, and many other locations. In a dark environment, you can even project your videos up to 100-inch diagonally. With the concept of a personal mobile theater in mind, the built-in projector is accompanied by a pair of Clear Phase stereo speakers^{*1} that pumps out true-to-life sound that makes your stories come alive.

在大屏幕上观赏您最美的回忆从此不再受限于您的客厅。我们的投影机内置投影机 and 一对高品质的立体扬声器，能让您方便的与朋友和家人在酒吧、营地和众多其他场所即时分享您最新的独特经历。在昏暗的环境中，您甚至可以将您的视频对角投影到最大100英寸。内置投影机嵌入了个人移动影院的概念，附有一对Clear Phase立体扬声器，能够迸发出栩栩如生的声音，使您的经历跃然于荧幕之上。

^{*1} PJ200: monaural speaker
PJ200: 单声道扬声器



Projector Specifications 投影机规格

| | HDR-PJ760 / PJ720 | HDR-PJ600 / PJ580 / PJ260 | HDR-PJ200 |
|---|---------------------------------------|---------------------------------------|---------------------------------------|
| Light Output 光输出 | Up to 20 lumen | Up to 13 lumen | Up to 10 lumen |
| Resolution Output 分辨率输出 | 640 x 360 | | |
| Screen Coverage 屏幕范围 | 10 type - 100 type | | |
| Throw Distance 投射距离 | Approx. 0.5m - 5m | | |
| Endurance (Battery Life) (Approx.) 连续使用时间 (电池寿命) (约) | 1h. 40min. (Max)(Supplied Battery) | 1h. 25min. (Max)(Supplied Battery) | 1h. 10min. (Max)(Supplied Battery) |

360 degrees speaker offers more powerful sound when enjoying projector movie!
360度扬声器在欣赏投影机的动态影像时提供更为强劲的声音!

Portable Speaker
便携式扬声器
RDP-CA1 (JE)
Open Price



▶ Please refer to page 12 for RDP-CA1. 关于RDP-CA1, 请参阅第12页。

"Exmor R" CMOS Sensor

"Exmor R" CMOS影像传感器

HDR-PJ760 / PJ720 / PJ600 / PJ580 / PJ260 / PJ200 / TD20 / GW77

Capture Stunning Video Even in Low Light 即使在低照度下亦能捕捉精彩视频

The "Exmor R" CMOS Sensor is capable of producing superb image quality even in low light conditions. Having twice the sensitivity compared to conventional CMOS sensors, "Exmor R" CMOS Sensor enables users to record their precious moments even in low light situations such as indoor birthday parties, fireworks, night sceneries, etc.

即使在低光照条件下，“Exmor R” CMOS影像传感器也能再现卓越的影像品质。

相对于传统CMOS影像传感器，“Exmor R” CMOS影像传感器具有两倍的感光度，在室内生日聚会、烟火或夜景等低光照条件下也能拍摄珍贵的瞬间。

^{*2} Comparison between our conventional model and the model with "Exmor R" CMOS Sensor. 索尼传统产品与搭载了“Exmor R” CMOS影像传感器的产品对比。



Conventional CMOS Sensor
传统CMOS影像传感器



2x increase in sensitivity^{*2}
感光度提升2倍^{*2}

"Exmor R" CMOS Sensor
"Exmor R" CMOS影像传感器

Extended Zoom

延伸变焦

HDR-PJ760 / PJ720 / PJ600 / PJ580 / PJ260 / PJ200 / TD20 / GW77

Reach Further with Extended Zoom 利用延伸变焦达到更远的距离

Extended Zoom enables users to zoom in beyond the zoom range of optical zoom for an even further reach. When Optical SteadyShot Active Mode is in use, Extended Zoom will be enabled automatically. "Handycam" camcorder with optical zoom of 10x, 12x, 25x, 30x, will have Extended Zoom of 17x, 20x, 30x and 55x respectively.

延伸变焦能让您在光学变焦的变焦范围之外进行放大，达到更远的距离。使用光学防抖增强模式时，延伸变焦将会自动启用。配备10倍、12倍、25倍、30倍光学变焦的“Handycam”数码摄像机将会分别具备17倍、20倍、30倍和55倍的延伸变焦。

- HDR-PJ760E/PJ720E/GW77E---17x
- HDR-PJ600E/PJ580E---20x
- HDR-PJ260E---55x
- HDR-PJ200E/PJ200---30x
- HDR-TD20E---17x (2D), 12x (3D)



55x Extended Zoom^{*3}
55倍延伸变焦

^{*3} HDR-PJ260

Advanced Sound Processor

高级声音处理器

HDR-PJ760 / PJ720 / PJ600 / PJ580 / PJ260 / TD20

Sound Quality Enhancement 音质增强

A new "Advanced Sound Processor" provides the essential audio noise reduction processing for the Auto Wind Noise Reduction and Closer Voice features. Recording clear, high-intelligibility audio is now easier than ever.

全新的“高级声音处理器”为自动风噪减弱和Closer Voice功能提供必不可少的音频降噪处理。现在录制高度清晰易懂的音质比以往更加容易。



Wind Noise Reduction OFF
风噪减弱 关



Wind Noise Reduction ON
风噪减弱 开

★All insets contained here in are simulated pictures only. ★此处包含的所有插图均为模拟图片，仅供参考。

Full HD 1080i
AVCHD Progressive

Flagship "Handycam" with revolutionary Balanced Optical SteadyShot and a Built-in Projector

旗舰级“Handycam”数码摄像机，
具备革命性的平稳光学防抖功能，并内置投影机



Still Image Size
24.1 Megapixels
2410万像素静态
图像尺寸

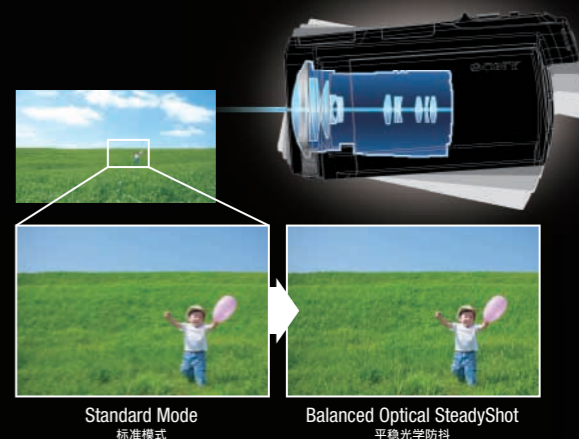
Balanced Optical SteadyShot; Up to 13x*1 more stable from wide to telephoto

平稳光学防抖：从广角到远距的稳定性最多提高13倍*1

By controlling the entire optical path including the image sensor as one floating unit, image stabilization is improved by as much as 13 times*1 compared to previous Image Stabilization technology. That applies to the full zoom range from wide to telephoto. Beautiful image quality with minimum blur is assured whether you're shooting scenery on vacation, or zooming in to catch an expression on a child's face.

相对于原先的影像稳定技术，该技术通过将包括影像传感器在内的完整光路作为一个浮动单元加以控制，影像稳定性提高了13倍*1之多。适用于广角到远距的全程变焦范围。无论是拍摄度假美景还是放大捕捉儿童脸部表情，均能确保美丽的影像品质以及最低程度的模糊。

*1 Compared to standard-mode image stabilization angle on the HDR-CX700 相对于HDR-CX700的标准模式影像稳定性视角



Catch everything you want in the frame

在取景框中捕捉任何想要的事物

HDR-PJ760E / PJ720E can now shoot at a focal length of at least 26.0mm (35mm equiv, 16:9 video mode), making it possible to pack a large building or a big group of friends in the frame even in tight spaces. The lens itself is high-performance Carl Zeiss type that delivers outstanding resolution, contrast, and color rendition for first-class overall image quality.

HDR-PJ760E / PJ720E现在能够以最短26.0mm的焦距拍摄（相当于35mm，16:9视频模式），即使拍摄空间狭小，也能将大型建筑物或一大群朋友收入取景框中。采用高性能的卡尔·蔡司镜头，具备出色的分辨率、对比度和色彩渲染力，造就一流的整体影像品质。

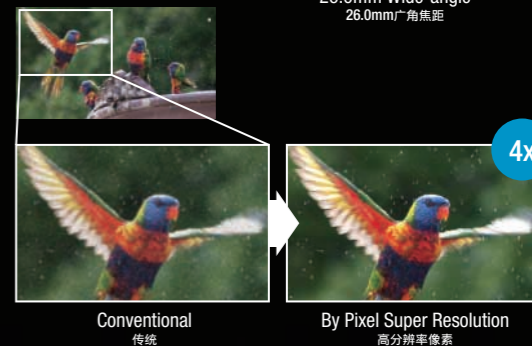


By Pixel Super Resolution increases the number of pixels recorded by up to 4x for high-resolution images

高分辨率像素将录制的像素值最大提高4倍，获得高分辨率影像

Here's an advanced featured that provides outstanding image quality for both video and stills. By Pixel Super Resolution technology analyzes and processes not only the pixels to be directly affected, but also the surrounding pixels as well, and then combines the resultant data with that from a database that contains hundreds of variations to achieve optimum processing for each individual pixel. The end result is significantly improved image resolution.

此项高级功能可以为视频和静态图像提供出色的影像品质。高分辨率像素技术不仅可以分析并处理直接受影响的像素，还可以分析并处理周边像素，然后将所得数据与含有数以百计变量的数据库中的数据相结合，达到单个像素的最佳处理状态。从而使影像分辨率得到显著提高。



96GB Flagship Full HD Camcorder with Projector

配备投影机功能的96GB旗舰级全高清摄像机

- Balanced Optical SteadyShot
- 24.1M still picture
- 26mm wide angle Carl Zeiss Lens
- Electronic Viewfinder
- 平稳光学防抖
- 2410万像素静态图像
- 26mm广角卡尔·蔡司镜头
- 电子取景器

| | | |
|--------------------------------------|---|--------------------|
| Internal Memory 96GB 内存 | Recording Time Up to Approx. AVCHD 5M (LP) mode (2 channels sound) | 39h. 55min. |
| | 最长记录时间 约 在AVCHD 5M(LP)模式下(2声道) | 39小时55分钟 |

| | | | | | | | | |
|--|---|------------------------------------|------------------------------------|-------------------------------------|---------------------------------|------------------|--|-----------------------------------|
| 26.0mm Wide-angle 26.0mm广角焦距 | Balanced Optical SteadyShot (Active Mode) 平稳光学防抖(增强模式) | Progressive Mode 50p/25p 逐行扫描模式 | 10x Optical Zoom 10倍光学变焦 | 17x Extended Zoom 17倍延伸变焦 | 5.1ch / 2ch MIC 5.1 / 2声道麦克风 | Lens hood 镜头盖 | Built-in USB Cable for charge update 内置USB充电线 | AUTO WIND NOISE REDUCTION 自动降噪 |
|--|---|------------------------------------|------------------------------------|-------------------------------------|---------------------------------|------------------|--|-----------------------------------|

| | | | |
|--------------------------------------|--|-----------------------------|---|
| Multilingual Menu Display 多语言菜单显示 | English / Chinese (Simplified Chinese / Traditional Chinese) 中文(简体中文 / 繁体中文) / French / Italian / German / Spanish / Dutch / Russian / Portuguese / Greek / Arabic / Persian / Thai / Turkish / Polish / Czech / Hungarian / Romanian / Indonesian / Malay | Instruction Manual 使用说明书 | English / Russian / Chinese (Simplified Chinese) 中文(简体中文) |
| | English / Chinese (Simplified Chinese / Traditional Chinese) 中文(简体中文 / 繁体中文) / French / Italian / German / Spanish / Dutch / Russian / Portuguese / Greek / Arabic / Persian / Thai / Turkish / Polish / Czech / Hungarian / Romanian / Indonesian / Malay | | English / Russian / Chinese (Simplified Chinese) 中文(简体中文) |



3.0 type [Touch Panel]

921K dots TruBlack



Exmor R CMOS Sensor

MADE IN JAPAN
日本制造(主机)

PAL **HDR-PJ760E(JE)**
Open Price

| | | | | | |
|--|---------------------------------|------------|-------------------------|---|--|
| LCD ON Viewfinder OFF 开启液晶显示屏 关闭取景器 | NP-FV100 | NP-FV70 | NP-FV50 [Supplied] [配备] | Video compression (5.1 channels sound) 视频压缩(5.1声道) | 96GB Internal Memory 96GB内存 |
| | HDR-PJ760E ※AVCHD 9M (HD-HQ) | 7h. 25min. | 3h. 50min. | 1h. 50min. | AVCHD 28M (PS) 7h. 55min. AVCHD 24M (FX) 9h. 20min. AVCHD 17M (FH) 12h. 40min. AVCHD 9M (HQ) 22h. 20min. AVCHD 5M (LP) 38h. 35min. |

64GB Flagship Full HD Camcorder with Projector

配备投影机功能的64GB旗舰级全高清摄像机

- Balanced Optical SteadyShot
- 24.1M still picture
- 26mm wide angle Carl Zeiss Lens
- 平稳光学防抖
- 2410万像素静态图像
- 26mm广角卡尔·蔡司镜头

| | | |
|--------------------------------------|---|--------------------|
| Internal Memory 64GB 内存 | Recording Time Up to Approx. AVCHD 5M (LP) mode (2 channels sound) | 26h. 05min. |
| | 最长记录时间 约 在AVCHD 5M(LP)模式下(2声道) | 26小时05分钟 |

| | | | | | | | | |
|--|---|------------------------------------|------------------------------------|-------------------------------------|---------------------------------|------------------|--|-----------------------------------|
| 26.0mm Wide-angle 26.0mm广角焦距 | Balanced Optical SteadyShot (Active Mode) 平稳光学防抖(增强模式) | Progressive Mode 50p/25p 逐行扫描模式 | 10x Optical Zoom 10倍光学变焦 | 17x Extended Zoom 17倍延伸变焦 | 5.1ch / 2ch MIC 5.1 / 2声道麦克风 | Lens hood 镜头盖 | Built-in USB Cable for charge update 内置USB充电线 | AUTO WIND NOISE REDUCTION 自动降噪 |
|--|---|------------------------------------|------------------------------------|-------------------------------------|---------------------------------|------------------|--|-----------------------------------|

| | | | |
|--------------------------------------|--|-----------------------------|---|
| Multilingual Menu Display 多语言菜单显示 | English / Chinese (Simplified Chinese / Traditional Chinese) 中文(简体中文 / 繁体中文) / French / Italian / German / Spanish / Dutch / Russian / Portuguese / Greek / Arabic / Persian / Thai / Turkish / Polish / Czech / Hungarian / Romanian / Indonesian / Malay | Instruction Manual 使用说明书 | English / Russian / Chinese (Simplified Chinese) 中文(简体中文) |
| | English / Chinese (Simplified Chinese / Traditional Chinese) 中文(简体中文 / 繁体中文) / French / Italian / German / Spanish / Dutch / Russian / Portuguese / Greek / Arabic / Persian / Thai / Turkish / Polish / Czech / Hungarian / Romanian / Indonesian / Malay | | English / Russian / Chinese (Simplified Chinese) 中文(简体中文) |



3.0 type [Touch Panel]

921K dots TruBlack



Exmor R CMOS Sensor

MADE IN JAPAN
日本制造(主机)

PAL **HDR-PJ720E(JE)**
Open Price

| | | | | | |
|--|---------------------------------|------------|-------------------------|---|---|
| LCD ON Viewfinder OFF 开启液晶显示屏 关闭取景器 | NP-FV100 | NP-FV70 | NP-FV50 [Supplied] [配备] | Video compression (5.1 channels sound) 视频压缩(5.1声道) | 64GB Internal Memory 64GB内存 |
| | HDR-PJ720E ※AVCHD 9M (HD-HQ) | 7h. 25min. | 3h. 50min. | 1h. 50min. | AVCHD 28M (PS) 5h. 10min. AVCHD 24M (FX) 6h. 05min. AVCHD 17M (FH) 8h. 15min. AVCHD 9M (HQ) 14h. 35min. AVCHD 5M (LP) 25h. 15min. |

*Please refer to page 34 for product specifications and page 21 for accessories. 关于本产品的规格，请参阅第34页；配件请参阅第21页。

★For information about the prices of "Open Price" products, please contact your nearest Sony product retailer. ★All insets contained here in are simulated pictures only.

★如需了解关于"Open Price(价格未定)"产品的价格信息，请就近向索尼产品零售商家联系咨询。★此处包含的所有插图均为模拟图片，仅供参考。

Full HD 1080 AVCHD Progressive

220GB Advanced Full HD Camcorder with Projector

配备投影机功能的220GB高级全高清摄像机

- Optical SteadyShot
- 20.4M still picture
- 26.8mm wide angle Sony "G Lens"
- 光学防抖
- 2040万像素静态图像
- 26.8mm广角索尼"G镜头"

Still Image Size **20.4** Megapixels
2040万像素静态图像尺寸



Built-In PROJECTOR

MADE IN JAPAN 日本制造(主机)

PAL **HDR-PJ600E(JE)** Open Price

3.0 type [Touch Panel]
921K dots TruBlack

Exmor R™ CMOS Sensor

HDD 220GB 内置硬盘

Recording Time Up to Approx. AVCHD 5M (LP) mode (2 channels sound) **91h. 50min.**
最长记录时间约 **91小时50分钟**
在AVCHD 5M(LP)模式下(2声道)

| | | | | |
|--|--|---------------------------------------|------------------------------------|-------------------------------------|
| 26.8mm Wide-angle 26.8mm广角焦距 | Optical SteadyShot (Active Mode) 光学防抖(增强模式) | Progressive Mode 50p/25p 逐行扫描模式 | 12x Optical Zoom 12倍光学变焦 | 20x Extended Zoom 20倍延伸变焦 |
| 5.1ch / 2ch MIC 5.1 / 2声道麦克风 | Lens hood | Built-in USB Cable for charge/updates | AUTO WIND NOISE REDUCTION | |

Battery continuous recording duration (Approx.)
电池连续工作时间(约)

| | | | | | |
|---------------------------------|------------|------------|-----------------------|--|---|
| LCD ON 开启液晶显示屏 | NP-FV100 | NP-FV70 | NP-FV50 [Supplied] 配备 | Video compression (5.1 channels sound) 视频压缩(5.1声道) | 220GB HDD 220GB硬盘 |
| HDR-PJ600E ※AVCHD 9M (HD-HQ) | 6h. 35min. | 3h. 15min. | 1h. 35min. | AVCHD 28M (PS) AVCHD 24M (FX) AVCHD 17M (FH) AVCHD 9M (HQ) AVCHD 5M (LP) | 18h. 10min. 21h. 30min. 29h. 10min. 51h. 20min. 88h. 40min. |

Movie recording [High-Definition] (Approx.)
动态影像录制时间[高清](约)

Full HD 1080 AVCHD Progressive

16GB Stylish Full HD Camcorder with Projector

配备投影机功能的16GB时尚全高清摄像机

- Optical SteadyShot
- 55x Extended Zoom (30x optical)
- 29.8mm wide angle Sony "G Lens"
- 光学防抖
- 55倍延伸变焦(30倍光学)
- 29.8mm广角索尼"G镜头"

Still Image Size **8.9** Megapixels
890万像素静态图像尺寸



Built-In PROJECTOR

MADE IN JAPAN 日本制造(主机)

PAL **HDR-PJ260E(JE)** Open Price

3.0 type [Touch Panel]
230k dots

Exmor R™ CMOS Sensor

Internal Memory 16GB 内存

Recording Time Up to Approx. AVCHD 5M (LP) mode (2 channels sound) **6h. 30min.**
最长记录时间约 **6小时30分钟**
在AVCHD 5M(LP)模式下(2声道)

| | | | | |
|--|--|---------------------------------------|------------------------------------|-------------------------------------|
| 29.8mm Wide-angle 29.8mm广角焦距 | Optical SteadyShot (Active Mode) 光学防抖(增强模式) | Progressive Mode 50p 逐行扫描模式 | 30x Optical Zoom 30倍光学变焦 | 55x Extended Zoom 55倍延伸变焦 |
| 5.1ch / 2ch MIC 5.1 / 2声道麦克风 | Lens hood | Built-in USB Cable for charge/updates | AUTO WIND NOISE REDUCTION | |

Battery continuous recording duration (Approx.)
电池连续工作时间(约)

| | | | | | |
|---------------------------------|------------|------------|-----------------------|--|--|
| LCD ON 开启液晶显示屏 | NP-FV100 | NP-FV70 | NP-FV50 [Supplied] 配备 | Video compression (5.1 channels sound) 视频压缩(5.1声道) | 16GB Internal Memory 16GB内存 |
| HDR-PJ260E ※AVCHD 9M (HD-HQ) | 9h. 40min. | 4h. 50min. | 2h. 20min. | AVCHD 28M (PS) AVCHD 24M (FX) AVCHD 17M (FH) AVCHD 9M (HQ) AVCHD 5M (LP) | 1h. 15min. 1h. 30min. 2h. 05min. 3h. 40min. 6h. 20min. |

Movie recording [High-Definition] (Approx.)
动态影像录制时间[高清](约)

Full HD 1080 AVCHD Progressive

32GB Advanced Full HD Camcorder with Projector

配备投影机功能的32GB高级全高清摄像机

- Optical SteadyShot
- 20.4M still picture
- 26.8mm wide angle Sony "G Lens"
- 光学防抖
- 2040万像素静态图像
- 26.8mm广角索尼"G镜头"

Still Image Size **20.4** Megapixels
2040万像素静态图像尺寸



Built-In PROJECTOR

MADE IN JAPAN 日本制造(主机)

PAL **HDR-PJ580E(JE)** Open Price

3.0 type [Touch Panel]
921K dots TruBlack

Exmor R™ CMOS Sensor

Internal Memory 32GB 内存

Recording Time Up to Approx. AVCHD 5M (LP) mode (2 channels sound) **13h. 15min.**
最长记录时间约 **13小时15分钟**
在AVCHD 5M(LP)模式下(2声道)

| | | | | |
|--|--|---------------------------------------|------------------------------------|-------------------------------------|
| 26.8mm Wide-angle 26.8mm广角焦距 | Optical SteadyShot (Active Mode) 光学防抖(增强模式) | Progressive Mode 50p/25p 逐行扫描模式 | 12x Optical Zoom 12倍光学变焦 | 20x Extended Zoom 20倍延伸变焦 |
| 5.1ch / 2ch MIC 5.1 / 2声道麦克风 | Lens hood | Built-in USB Cable for charge/updates | AUTO WIND NOISE REDUCTION | |

Battery continuous recording duration (Approx.)
电池连续工作时间(约)

| | | | | | |
|---------------------------------|------------|------------|-----------------------|--|---|
| LCD ON 开启液晶显示屏 | NP-FV100 | NP-FV70 | NP-FV50 [Supplied] 配备 | Video compression (5.1 channels sound) 视频压缩(5.1声道) | 32GB Internal Memory 32GB内存 |
| HDR-PJ580E ※AVCHD 9M (HD-HQ) | 8h. 20min. | 4h. 10min. | 2h. 00min. | AVCHD 28M (PS) AVCHD 24M (FX) AVCHD 17M (FH) AVCHD 9M (HQ) AVCHD 5M (LP) | 2h. 35min. 3h. 05min. 4h. 10min. 7h. 25min. 12h. 45min. |

Movie recording [High-Definition] (Approx.)
动态影像录制时间[高清](约)

Full HD 1080 AVCHD Progressive

Compact Full HD Camcorder with Projector

配备投影机功能的紧凑型全高清摄像机

- Built-in Projector
- SteadyShot
- 30x Extended Zoom (25x optical)
- 内置投影机
- 电子防抖
- 30倍延伸变焦(25倍光学)

Still Image Size **5.3** Megapixels
530万像素静态图像尺寸



Built-In PROJECTOR

MADE IN JAPAN 日本制造(主机) ※HDR-PJ200E(JE) only. 仅限HDR-PJ200E(JE)。

PAL **HDR-PJ200E(JE)** Open Price

2.7 type [Touch Panel]
230k dots

Exmor R™ CMOS Sensor

NTSC **HDR-PJ200(JE)** Open Price

2.7 type [Touch Panel]
230k dots

| | | | | |
|--|--|------------------------------------|-------------------------------------|---------------------------------------|
| 36.0mm Wide-angle 36.0mm广角焦距 | SteadyShot (Active Mode) 电子防抖(增强模式) | 25x Optical Zoom 25倍光学变焦 | 30x Extended Zoom 30倍延伸变焦 | Built-in USB Cable for charge/updates |
|--|--|------------------------------------|-------------------------------------|---------------------------------------|

Battery continuous recording duration (Approx.)
电池连续工作时间(约)

| | | | | | | |
|--|-------------|------------|------------|-----------------------|--|---|
| LCD ON 开启液晶显示屏 | NP-FV100 | NP-FV70 | NP-FV50 | NP-FV30 [Supplied] 配备 | Video compression (2 channels sound) 视频压缩(2声道) | 16GB "Memory Stick" / SD Memory Card ² |
| HDR-PJ200 HDR-PJ200E ※AVCHD 9M (HD-HQ) | 12h. 25min. | 6h. 15min. | 3h. 00min. | 1h. 35min. | AVCHD 28M (PS) AVCHD 24M (FX) AVCHD 17M (FH) AVCHD 9M (HQ) AVCHD 5M (LP) | — 1h. 30min. 2h. 00min. 3h. 35min. 6h. 20min. |

Movie recording [High-Definition] (Approx.)
动态影像录制时间[高清](约)

Multilingual Menu Display 多语言菜单显示
English / Chinese (Simplified Chinese / Traditional Chinese) 中文(简体中文 / 繁体中文) / French / Italian / German / Spanish / Dutch / Russian / Portuguese / Greek / Arabic / Persian / Thai / Turkish / Polish / Czech / Hungarian / Romanian / Indonesian / Malay

Instruction Manual 使用说明书
English / Russian / Chinese (Simplified Chinese) 中文(简体中文)

※Please refer to page 34-35 for product specifications and page 21 for accessories. 关于本产品的规格, 请参阅第34-35页; 配件请参阅第21页。

Multilingual Menu Display 多语言菜单显示
NTSC: English / Chinese (Traditional Chinese) 中文(繁体中文) / Portuguese / French / Spanish / Korean
PAL: English / Chinese (Simplified Chinese / Traditional Chinese) 中文(简体中文 / 繁体中文) / French / Italian / German / Spanish / Dutch / Russian / Portuguese / Greek / Arabic / Persian / Thai / Turkish / Polish / Czech / Hungarian / Romanian / Indonesian / Malay

Instruction Manual 使用说明书
NTSC: English / Portuguese / Spanish / Korean
PAL: English / Russian / Chinese (Simplified Chinese) 中文(简体中文)

※Please refer to page 35 for product specifications and page 21 for accessories. 关于本产品的规格, 请参阅第35页; 配件请参阅第21页。

★For information about the prices of "Open Price" products, please contact your nearest Sony product retailer. ★All insets contained here in are simulated pictures only. ★如需了解关于"Open Price(价格未定)"产品的价格信息, 请就近向索尼产品零售商联系咨询。★此处包含的所有插图均为模拟图片, 仅供参考。

1920 x 1080
Full HD 3D
AVCHD
3D / Progressive

3D
World
Created by Sony

Relive your fondest memories in 3D! The smaller, lighter "Double Full HD" 3D "Handycam"

以3D形式再现您最钟情的记忆!
更小更轻的“两倍全高清”
3D "Handycam" 数码摄像机

Still Image Size
20.4 Megapixels
2040万像素静态
图像尺寸



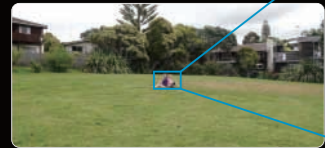
Shot with two lenses and processed with two image processors 双镜头拍摄, 双影像处理器处理

Driven by not one but two Wide Angle Sony "G Lenses," two "Exmor R" CMOS Sensors, and two powerful "BIONZ" image processors, HDR-TD20 is able to shoot 3D images in "Double Full HD." You can enjoy 3D images in Full HD quality just as you can with conventional 2D "Handycam" HD camcorders.

采用双重系统驱动! HDR-TD20凭借两个广角索尼"G镜头", 两个"Exmor R" CMOS影像传感器, 以及两个功能强大的"BIONZ"影像处理器, 实现"两倍全高清"3D影像的拍摄。如同欣赏传统2D "Handycam" 高清数码相机拍摄的影像一样, 可以尽情欣赏全高清品质的3D影像。



Shoot 3D using 10x optical zoom 采用10倍光学变焦拍摄3D影像



10x
optical zoom
10倍光学变焦

Dynamic 3D images without 3D glasses 无需3D眼镜即可观赏动态3D影像



3D depth adjustment delivers natural 3D images in any situation 3D深度调整可在任何情形下再现自然3D影像

MADE IN JAPAN
日本制造 (主机)

PAL **HDR-TD20E(JE)**
Open Price



3.5 type
[Touch Panel]
1,229K dots
TruBlack



Battery continuous recording duration (Approx.) 电池连续工作时间 (约)

| LCD ON 开启液晶显示屏 | NP-FV100 | NP-FV70 [Supplied] [配备] | Video compression (5.1 channels sound) 视频压缩 (5.1声道) | 64GB Internal Memory 64GB内存 |
|-------------------------------------|------------|-------------------------------|--|--|
| HDR-TD20E (3D) ※AVCHD 9M (HD-HQ) | 5h. 00min. | 2h. 30min. | AVCHD 28M (3D) AVCHD 28M (PS) AVCHD 24M (FX) AVCHD 17M (FH) | 4h. 55min. 4h. 55min. 5h. 45min. 7h. 55min. |
| HDR-TD20E (2D) ※AVCHD 9M (HD-HQ) | 7h. 20min. | 3h. 40min. | AVCHD 9M (HQ) AVCHD 5M (LP) | 13h. 55min. 24h. 00min. |

Movie recording [High-Definition] (Approx.) 动态影像录制时间 [高清] (约)

| Internal Memory 64GB 内存 | Recording Time Up to Approx. AVCHD 28M (3D) mode (5.1 channels sound) 最长记录时间 约 4小时55分钟 | Recording Time Up to Approx. AVCHD 5M (LP) mode (2 channels sound) 最长记录时间 约 24小时50分钟 |
|-------------------------------|--|--|
| 3D | 4h. 55min. | 24h. 50min. |
| 2D | 4h. 55min. | 24h. 50min. |

| | | | | | | |
|---|--|--|--------------------------------|--|---------------------------------|---|
| 33.4mm (3D) / 29.8mm (2D) Wide-angle 33.4mm (3D) / 29.8mm (2D) 广角焦距 | Optical SteadyShot (Active Mode) 光学防抖 (增强模式) | Progressive Mode 50p/25p (2D only) 逐行扫描模式 (仅限2D) | 10x Optical Zoom 10倍光学变焦 | 12x (3D) / 17x (2D) Extended Zoom 12倍 (3D) / 17倍 (2D) 延伸变焦 | 5.1ch / 2ch MIC 5.1 / 2声道麦克风 | Built-in USB Cable for charge upload AUTO WIND NOISE REDUCTION |
|---|--|--|--------------------------------|--|---------------------------------|---|

Multilingual Menu Display
多语言菜单显示
English / Chinese (Simplified Chinese / Traditional Chinese) 中文 (简体中文 / 繁体中文) / French / Italian / German / Spanish / Dutch / Russian / Portuguese / Greek / Arabic / Persian / Thai / Turkish / Polish / Czech / Hungarian / Romanian / Indonesian / Malay

Instruction Manual
使用说明书
English / Russian / Chinese (Simplified Chinese)
中文 (简体中文)

Full HD
1080
AVCHD
Progressive

Reinvent your creativity, discover your passion

唤醒您的创意 挥洒您的激情

Still Image Size
16.1 Megapixels
1610万像素静态
图像尺寸



Image Sensor 影像传感器

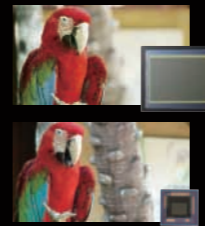
With an image sensor that is approximately 19.5 times larger than those used in conventional camcorders, you can capture dramatic defocusing effects and use the shallow depth of field to focus the audience's attention on different subjects at will.

新影像传感器约为旧影像传感器的19.5倍大, 可捕捉富有表现力的散焦效果, 并可自由地采用浅景深使观众关注不同拍摄主体。

Exmor™
APS HD CMOS

"Exmor" APS HD CMOS Sensor
"Exmor" APS HD CMOS 影像传感器

1/2.88-type
compact camcorder
image sensor
1/2.88"型小型摄像机
影像传感器



Interchangeable Lenses 可更换镜头

A whole new level of creative expression is now possible with NEX-VG20EH. You can take full advantage of both the E-mount and A-mount*2 lenses to capture anything and everything between macro and super telephoto.

*2 An optional mount adaptor (LA-EA2, LA-EA1) is required.

使用NEX-VG20EH, 能够实现全新水平的创意表现, 您可以充分利用E卡口和A卡口*2镜头在微距和超级远距之间捕捉任何景物及所景物。 *2 需要使用选购的卡口适配器 (LA-EA2, LA-EA1)。



E-mount lens with
Optical SteadyShot
E卡口镜头
具备光学防抖功能



E-mount lenses E卡口镜头

Microphone 麦克风

NEX-VG20EH features a unique Quad Capsule Spatial Array Microphone high directivity and clear, low-noise stereo / 5.1ch surround sound recording.

NEX-VG20EH采用独特的四胶囊空间阵列麦克风, 确保高定向性且清晰的低噪立体声 / 5.1声道环绕声录制。



Microphone capsule structure 麦克风胶囊结构

MADE IN JAPAN
日本制造 (主机)

PAL **NEX-VG20EH(JE)**
Open Price

Kit lens: E 18-200mm F3.5-6.3 OSS

3.0 type
921K dots
TruBlack



Battery continuous recording duration (Approx.) 电池连续工作时间 (约)

| LCD ON Viewfinder OFF 开启液晶显示屏 关闭取景器 | NP-FV100 | NP-FV70 [Supplied] [配备] | Video compression (5.1 channels sound) 视频压缩 (5.1声道) | 32GB "Memory Stick" / SD Memory Card*3 |
|--|------------|-------------------------------|--|---|
| NEX-VG20EH ※AVCHD 9M (HD-HQ) | 5h. 50min. | 2h. 55min. | AVCHD 28M (PS) AVCHD 24M (FX) AVCHD 17M (FH) AVCHD 9M (HQ) AVCHD 5M (LP) | 2h. 30min. 3h. 00min. 4h. 05min. 7h. 10min. 12h. 25min. |

| | | | |
|----------------------------|---------------------------------------|--------------------------------|---------------------------------|
| Optical SteadyShot 光学防抖 | Progressive Mode 50p/25p 逐行扫描模式 | 11x Optical Zoom 11倍光学变焦 | 5.1ch / 2ch MIC 5.1 / 2声道麦克风 |
|----------------------------|---------------------------------------|--------------------------------|---------------------------------|

*3 Sold separately 另售 *4 Kit Lens E 18-200mm F3.5-6.3 OSS

Multilingual Menu Display
多语言菜单显示
English / Chinese (Simplified Chinese / Traditional Chinese) 中文 (简体中文 / 繁体中文) / French / Italian / German / Spanish / Dutch / Russian / Portuguese / Greek / Thai / Polish / Czech / Hungarian / Romanian

Instruction Manual
使用说明书
English / Russian / Chinese (Simplified Chinese)
中文 (简体中文)

* CMOS Sensor photo is an image. CMOS影像传感器是图像。 * Please refer to page 35-36 for product specifications and page 21 for accessories. 关于本产品的规格, 请参阅第35-36页; 配件请参阅第21页。

* For information about the prices of "Open Price" products, please contact your nearest Sony product retailer. * All insets contained here in are simulated pictures only.

* 如需了解关于"Open Price(价格未定)"产品的价格信息, 请就近向索尼产品零售店联系咨询。 * 此处包含的所有插图均为模拟图片, 仅供参考。

Full HD 1080
AVCHD Progressive

16GB Stylish and Waterproof Full HD Camcorder
16GB时尚防水型全高清摄像机

- Optical SteadyShot
- 20.4M still picture
- 29.8mm wide angle Sony "G Lens"
- 光学防抖
- 2040万像素静态图像
- 29.8mm广角索尼"G镜头"

Still Image Size
20.4 Megapixels
2040万像素静态图像尺寸



(W) White (B) Black

※Please refer to page 39 for "Battery, memory card and multi connector cover," "Maintenance after using the camera in wet environments" and "Shock Resistance 1.5 m (5 ft)*4".
关于“电池/存储卡和多用途接口盖”、“潮湿环境下使用摄像机后的保养”以及“1.5m防震能力*4”，请参阅第39页。

MADE IN JAPAN
日本制造(主机)

PAL HDR-GW77E(JE)
Open Price NEW



Internal Memory 16GB 内存
Recording Time Up to Approx. 6h. 30min.
AVCHD 5M (LP) mode (2 channels sound)
最长记录时间约 6小时30分钟
在AVCHD 5M(LP)模式下(2声道)

| | | | |
|--|--|--|--|
| 29.8mm Wide-angle 29.8mm广角焦距 | Optical SteadyShot (Active Mode) 光学防抖(增强模式) | Progressive Mode 50p 逐行扫描模式 | Waterproof 防水 IEC 60529 IPX8*2 compliant 符合5.0m水深60分钟时长的IEC 60529 IPX8*2标准 |
| 10x Optical Zoom 10倍光学变焦 | 17x Extended Zoom 17倍延伸变焦 | 2ch MIC 2声道麦克风 | Dustproof 防尘 IEC 60529 IP5X*2 compliant 符合IEC 60529 IP5X*2标准 |
| 5.0m / 16ft. for 60min. IEC 60529 IPX8*2 compliant 符合5.0m水深60分钟时长的IEC 60529 IPX8*2标准 | | Shockproof 防震*3*4 1.5m MIL-STD810F Method 516.5-Shock | |

| | | | |
|--|------------|--|---|
| Battery continuous recording duration (Approx.) 电池连续工作时间(约) | | Movie recording [High-Definition] (Approx.) 动态影像录制时间[高清](约) | |
| LCD ON 开启液晶显示屏 | NP-FG1 | NP-BG1 [Supplied 配备] | Video compression (2 channels sound) 视频压缩(2声道) |
| HDR-GW77E ※AVCHD 9M (HD-HQ) | 1h. 30min. | 1h. 30min. | 16GB Internal Memory 16GB内存 |
| | | | AVCHD 28M (FS) 1h. 15min. |
| | | | AVCHD 24M (FX) 1h. 30min. |
| | | | AVCHD 17M (FH) 2h. 05min. |
| | | | AVCHD 9M (HQ) 3h. 45min. |
| | | | AVCHD 5M (LP) 6h. 30min. |

1920 x 1080 Full HD 3D
AVCHD 3D / Progressive

Share the thrill of discovery
分享激动人心的发现



Still Image Size
7.1 Megapixels
710万像素静态图像尺寸



360 degrees speaker offers more powerful sound when enjoying projector movie!
360度扬声器在欣赏投影机的动态影像时提供更为强劲的声音!

RDP-CA1(JE)

Open Price

- Easily attach to Active Interface Shoe
- No battery needed. Supplies power from camcorder
- Wide sound covering down to approx. 250Hz
- 易于安装至有源接口端系统
- 无需电池，通过摄像机供电
- 涵盖低至约250Hz的宽广声音



Compatibility Model
HDR-PJ760E(JE) HDR-PJ720E(JE)
HDR-PJ600E(JE) HDR-PJ580E(JE)

- Dimensions (D x H) 尺寸(深x高): 57 x 86 mm
- Mass 重量: 80g (only main body)
- Supplied Accessories 随机配件: Audio Connection Cable, Carrying Pouch



※Photo shown is image. 所示照片仅供参考。

Circle Sound Technology 环形声音技术

Sony unique angled diffuser allows sound to be delivered efficiently in 360 degrees.
索尼独特的斜角扩散器能让声音360度有效播放。



Multilingual Menu Display
多语言菜单显示

HDR-GW77E: English / Chinese (Simplified Chinese / Traditional Chinese) 中文(简体中文 / 繁体中文) / French / Italian / German / Spanish / Dutch / Russian / Portuguese / Greek / Arabic / Persian / Thai / Turkish / Polish / Czech / Hungarian / Romanian / Indonesian / Malay

Instruction Manual 使用说明书
HDR-GW77E: English / Russian / Chinese (Simplified Chinese) 中文(简体中文)
RDP-CA1: Japanese / English / French / Spanish / German / Dutch / Italian / Portuguese / Swedish / Ukrainian / Russian / Korean / Chinese (Simplified Chinese / Traditional Chinese) 中文(简体中文 / 繁体中文)

*1 Movies and still images recorded with this camera can be output by TV that supports PAL System. 支持PAL制式的电视可输出本相机拍摄动态影像和静态图像。*2 JIS / IEC International Protection Rating equivalent (Based on Sony Testing standards) 相当于JIS / IEC国际防护等级(基于索尼测试标准)。Note: Protection against damage and leakage are not guaranteed. Temperature and drop data results were internally determined by Sony. 注:不能保证不会发生损坏及漏水。温度及跌落数据结果由索尼内部测定。*3 As for dust-proof / shock-proof performance, there is no guarantee that the camcorder will not become scratched or dented. 关于防尘/防震性能,并不保证摄像机不会出现刮伤或凹痕。*4 Meeting MIL-STD 810F Method 516.5-Shock standards, this product has passed the required tests when dropped from a height of 1.5m above a 5cm-thick plywood board (with the LCD screen closed, facing toward the camcorder body) 该产品符合MIL-STD 810F Method 516.5-Shock标准,通过了从5cm厚度胶合板上1.5m高度跌落时所需的测试(液晶屏幕朝摄像机机身关闭的状态下)。*5 * Depending on use conditions and circumstances, no guarantee is made regarding damage to, malfunction of, or the water-proof performance of this camcorder. As for dust-proof / shock-proof performance, there is no guarantee that the camcorder will not become scratched or dented. * 根据使用状况和条件的不同,对于本摄像机的损坏、故障或防水性能不作保证。对于防尘/防震性能,并不保证摄像机不会出现刮伤或凹痕。

DEV-3(JE)

Open Price



Exmor R CMOS Sensor

View and record the world in lifelike Full HD video
以逼真的全高清视频观看并拍摄世界

The Digital Recording Binoculars can record in Full HD video (1920 x 1080 video)*5 for high resolution and accurate reproduction of details. Since binoculars are intrinsically 2-channel devices, two top-quality lenses, two precision "Exmor R" CMOS image sensors, and two high-speed "BIONZ" image processing engines are employed. That's one lens, sensor, and processing engine for each eye. The left- and right-eye images can be separately recorded and playback via the corresponding EVFs for immersive 3D viewing.*6 In addition to viewing in 3D, the Digital Recording Binoculars let you record in 3D as well,*7 for a new "dimension" of enjoyment.

摄录望远镜可以拍摄全高清视频(1920x1080视频)*5,实现高分辨率细节的准确再现。由于双筒望远镜实质上属于2通道设备,因此采用两个顶级品质的镜头、两个精密的"Exmor R" CMOS影像传感器和两个高速的"BIONZ"影像处理引擎。也就是每只眼睛对应一个镜头、一个传感器和一个处理引擎。通过相应的EVF电子取景器,左眼和右眼影像可以单独拍摄并播放,实现逼真的3D观赏*6。除了3D观赏以外,摄录望远镜还可以让您进行3D拍摄*7,实现全新"层次"的享受。

Stable viewing and blur-free recording with Optical SteadyShot (Active mode)
采用光学防抖(增强模式)稳定观赏并清晰拍摄

采用光学防抖(增强模式)稳定观赏并清晰拍摄

Locate, close in, capture. Unprecedented binocular functionality
定位、拉近、捕捉。前所未有的双筒望远镜功能

| | | | |
|----------------------------|-------------|-------|---------------------------|
| | Zoom 变焦 | AF AF | image stabilization 影像稳定性 |
| Optical Binoculars 光学双筒望远镜 | Some*8 部分*8 | — | Some*9 部分*9 |
| DEV-3 | ● | ● | ● |

Multilingual Menu Display 多语言菜单显示
Japanese / English / Chinese (Simplified Chinese / Traditional Chinese) 中文(简体中文 / 繁体中文) / French / Italian / German / Spanish / Dutch / Russian / Romanian / Portuguese / Greek / Arabic / Persian / Thai / Korean / Turkish / Polish / Czech / Hungarian / Indonesian / Malay

Instruction Manual 使用说明书
Japanese / English / Chinese (Simplified Chinese / Traditional Chinese) 中文(简体中文 / 繁体中文) / French / Italian / German / Spanish / Dutch / Russian / Portuguese / Korean / Arabic / Persian

*5 "Full-HD video with 1920 x 1080 pixels" refers to video recordings with 1920 pixels in the horizontal direction and 1080 pixels in the vertical direction. "1920 x 1080 pixels full HD video" refers to horizontal 1920 pixels and vertical 1080 pixels video content. *6 For 2D viewing the image from one channel is simultaneously played back via both EVFs. 对于2D观赏,一个通道的影像通过两个EVF电子取景器同时进行播放。*7 Up to a maximum magnification of 5.4x. 最高放大倍率5.4倍。*8 Some zooming binoculars are available. 部分变焦双筒望远镜提供。*9 Some image stabilized binoculars are available. 部分影像稳定双筒望远镜提供。
★For information about the prices of "Open Price" products, please contact your nearest Sony product retailer. ★All insets contained here in are simulated pictures only. ★如需了解关于"Open Price(价格未定)"产品的价格信息,请就近向索尼产品零售商联系咨询。★此处包含的所有插图均为模拟图片,仅供参考。

Cyber-shot

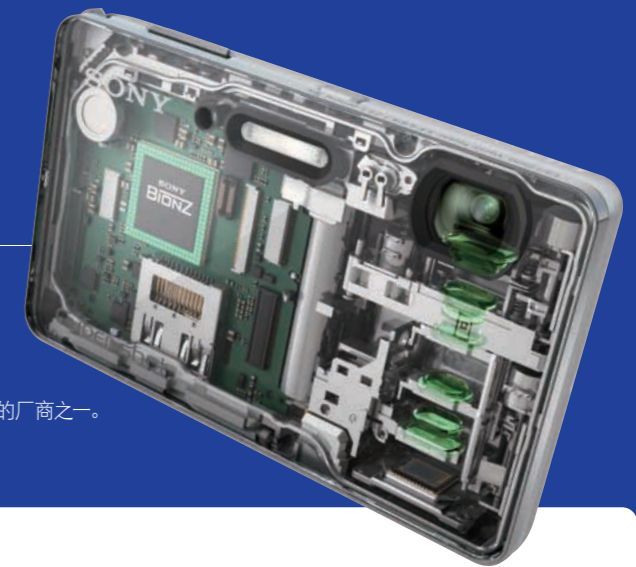
Digital Still Camera
数码相机

Imaging Technology — Excellence on the Inside

成像技术 — 内部卓越

Sony is one of the few manufacturers that develops all key components used in digital still cameras, such as lenses, image sensors and imaging processors.

索尼是少数自行开发镜头、影像传感器和影像处理器等用于数码相机内部所有关键组件的厂商之一。



Always Great Shots with Sony!

索尼始终成就精彩拍摄!

Clear Image Zoom 清晰影像缩放

DSC-TX200 / TX66 / RX100 / HX200 / HX10 / WX170

Sony introduces brand-new "Clear Image Zoom" that boosts magnification without lowering pixel count in the final image. Exclusive to Sony, "By Pixel Super Resolution" processing further extends the camera's Optical Zoom range, allowing full-resolution images with a maximum zoom.

索尼引入崭新的“清晰影像缩放”，在不降低最终影像像素数的情况下提升放大倍率。索尼独一无二的“高分辨率像素技术”处理进一步扩展了相机的光学变焦范围，可以使用最大变焦拍摄全分辨率影像。



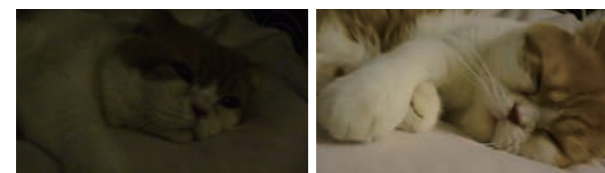
10x Clear Image Zoom 10倍清晰影像缩放

Extra High Sensitivity 超高感光度

DSC-TX200 / TX66 / RX100 / HX200 / HX10 / WX170

"Exmor R," Pixel Binning, Superimposing and "By Pixel Super Resolution" together reduce noise drastically down to 1/6. You can shoot object more clearly even in night with "Superior Auto."

"Exmor R"、像素组合、叠加和“高分辨率像素技术”的结合运用，将噪点大幅度减少至1/6。使用增强自动功能，即使在夜晚也能拍摄更加清晰的物体。



Conventional Model 传统机型

New Model 全新机型

Optical SteadyShot (Active Mode) 光学防抖(增强模式)

DSC-TX200 / TX66 / RX100 / HX200 / HX10 / WX170 / W630

Shaky, wobbly movements now have remarkably lesser impact on your videos, thanks to Optical SteadyShot with Active Mode. Whether you're shooting while you walk or zooming in, the anti-shake technology compensates for camera shake to help you get sharper videos.

Now you can create steadier videos and smoother footage that you'd love to share.

凭借增强模式的光学防抖，抖动及摇摆动作对于视频的影响现已显著降低。无论是行走时拍摄还是放大拍摄，防抖技术都会对相机抖动进行补偿，帮助您获得更加清晰的视频。

现在您可以为想分享的影像创建更加稳定的视频和更流畅的素材。

"Exmor R" CMOS Sensor "Exmor R" CMOS影像传感器

DSC-TX200 / TX66 / HX200 / HX10 / WX170

For low light moments, the back-illuminated "Exmor R" CMOS Sensor captures the mood and reduces the noise. The high-speed throughput of CMOS Sensors contribute to higher quality images even in low light and new shooting functions.

对于低光照条件，背照式"Exmor R" CMOS影像传感器可捕捉气氛、减少噪点。凭借CMOS影像传感器的高速处理能力，即使在低光照条件下也能助您实现出众的图像质量，尽享全新拍摄功能乐趣。



New Excellent Shooting Experience!

卓越的全新拍摄体验!

HD Movie in AVCHD AVCHD格式高清动态影像

DSC-TX200 / TX66 / RX100 / HX200 / HX10 / WX170

"Cyber-shot" can now shoot Full HD movie in AVCHD (1920 x 1080, 50i/50p) format, Adding new dimension to the camera's existing video capability. You can take great movies as well as pictures.

"Cyber-shot"数码相机现已能够拍摄AVCHD (1920 x 1080, 50i / 50p) 格式的全高清动态影像。您可以像拍照片一样拍摄卓越动态影像。



Recording functions of the "Handycam" camcorder in a compact design
融汇"Handycam"数码摄像机的摄像功能精髓

Sweep Panorama 扫描全景模式

DSC-TX200 / TX66 / RX100 / HX200 / HX10 / WX170 / W630 / W610

From beautiful views to group photos, get the whole scene into one wide-angle shot.

Just press the shutter button, sweep the camera over the scene...left to right or up and down, and let "Cyber-shot" stitch the scene together with beautifully natural results. In case DSC-W630 and DSC-W610, you can shoot 360° Panorama.

从优美的风景到集体合影，将整个场景融入一个广角拍摄画面。只需按下快门按钮，扫描整个场景……从左往右或从上到下，让"Cyber-shot"数码相机拼接成一张美丽自然的场景。DSC-W630和DSC-W610可以拍摄360度全景。



Picture Effect 照片效果

DSC-TX200 / TX66 / RX100 / HX200 / HX10 / WX170 / W630

Express your imagination and choose from a wide range of artistic effects like Toy Camera, High Monochrome and Partial Color — a unique effect that lets you capture one particular color in an otherwise black-and-white image.

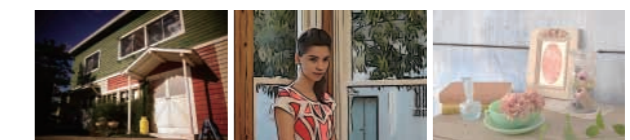
像玩具相机一样展现您的想象力，各种艺术效果任您选择。强反差色调，局部彩色-在原本黑白色的影像中捕捉一种特定色彩的独特效果。



HDR Painting HDR绘画

Richtone Monochrome 丰富色调黑白

Partial Color 局部彩色



Toy Camera 玩具相机

Illustration 插图

Soft High-key 柔光亮调



Pop Color 流行色彩

Miniature 微缩景观

Watercolor 水彩



Brand New "R" Series with Enormous 1.0 type "Exmor" CMOS Sensor

全新的“R”系列，配备大型1.0型“Exmor”CMOS影像传感器



MADE IN JAPAN
日本制造(主机)

PAL DSC-RX100(JE)
Open Price NEW

| | | | | |
|---|---|---|---|---------------------------------------|
| 20.2 Megapixels 2020万有效像素 | 1.0 type "Exmor" CMOS Sensor 1.0型"Exmor" CMOS影像传感器 | 3.6x Optical Zoom 3.6倍光学变焦 | Up to 7.2x Clear Image Zoom 最高7.2倍清晰影像变焦 | 28mm Wide-angle 28mm广角焦距 |
| Optical *2 SteadyShot 光学防抖 | AVCHD Full HD Movie AVCHD格式全高清动态影像 | Hi-speed AF 自动对焦功能 | 13 Picture Effect 13照片效果 | Background Defocus 背景虚化 |
| Superior Auto iA+ 增强自动 | 360 Sweep Panorama 扫描全景 | Smile Shutter 微笑快门 | | |

TruBlack 1,229K dots
Xtra Fine TruBlack



Leave the world of compromise behind 精益求精

Enormous 1.0 type "Exmor" CMOS Sensor 大型1.0型"Exmor" CMOS影像传感器

The huge dimensions of this specially developed "Exmor" CMOS Sensor capture more light from your scene and reproduce every stunning detail with greater fidelity. Original dual noise reduction and column A/D conversion also decrease noise to ensure smooth, clear reproduction even in low-light conditions at approx. 20.2-megapixel effective resolution.

这款专门开发的"Exmor" CMOS影像传感器尺寸庞大，能从场景中捕捉更多光线，以更高的保真度完美地再现每处细节。另外，独创的双重降噪技术和列A/D转换技术可以减少噪点，即使在低光照条件下，也能确保以大约2020万像素的有效分辨率平稳、清晰地再现影像。

High-performance Carl Zeiss Vario-Sonnar T* lens 高性能卡尔·蔡司Vario-Sonnar T*镜头



Legendary Carl Zeiss optics and unrivaled Sony imaging technology come together in one extraordinary lens. Despite compact dimensions, it offers supremely accurate performance, powerful 3.6x optical zoom capabilities and an enormous F1.8 circular aperture for gorgeous background defocusing with beautiful bokeh.

卡尔·蔡司传奇性的光学技术和索尼无与伦比的成像技术相结合，造就了这款非凡的镜头。尽管体积较小，但它具有极为精确的性能、强大的3.6倍光学变焦能力，以及大型F1.8圆形光圈，可以通过精美的焦外成像实现完美的背景虚化。

Sophisticated high-speed "BIONZ" image processor 精密的高速"BIONZ"影像处理器

Sony's blazing-fast "BIONZ" imaging engine employs powerful algorithms to transform data captured by the CMOS Sensor into stunningly beautiful images with accurate color, rich tonal gradations and minimal noise. Its advanced design also handles demanding tasks like 10 fps continuous shooting and Multi Frame NR with utmost precision.

索尼的超快"BIONZ"成像引擎采用强大的算法将CMOS影像传感器采集的数据转换成非同寻常的精美影像，色彩准确、色调丰富而且噪点极少。此外，它的先进设计可以应对苛刻的任务，例如，每秒10张连拍和以极高的精度进行多帧降噪。



Multilingual Menu Display
多语言菜单显示

English / Chinese (Simplified Chinese / Traditional Chinese) 中文 (简体中文 / 繁体中文) / French / Korean / Portuguese / Spanish / Arabic / Persian / Thai / Malay

Instruction Manual
使用说明书

English / Chinese (Simplified Chinese / Traditional Chinese) 中文 (简体中文 / 繁体中文) / Korean / Spanish / Portuguese

Full HD movie & 3D in one body 30x ultra high zoom with Hi-speed AF 集全高清动态影像和3D影像拍摄于一体， 30倍超高变焦，自动对焦功能



MADE IN JAPAN
日本制造(主机)

PAL DSC-HX200(JE)
Open Price

| | | | | |
|---|--|---------------------------------------|---|---------------------------------------|
| 18.2 Megapixels 1820万有效像素 | "Exmor R" CMOS Sensor "Exmor R" CMOS影像传感器 | 30x Optical Zoom 30倍光学变焦 | Up to 60x Clear Image Zoom 最高60倍清晰影像变焦 | 27mm Wide-angle 27mm广角焦距 |
| Optical *2 SteadyShot 光学防抖 | AVCHD Full HD Movie AVCHD格式全高清动态影像 | Hi-speed AF 自动对焦功能 | 9 Picture Effect 9照片效果 | Background Defocus 背景虚化 |
| Superior Auto iA+ 增强自动 | 3D Sweep Panorama 3D扫描全景 | Smile Shutter 微笑快门 | | |

TruBlack 921K dots
Xtra Fine TruBlack



Full HD movie & 3D in one body 16x high zoom with Hi-speed AF 集全高清动态影像和3D影像拍摄于一体， 16倍高变焦，自动对焦功能



Photo Creativity 照片创作

You can easily change color, Brightness, Vividness, picture effects of the scene with intuitive operation.
通过直观操作便可轻松更改场景的色彩、亮度、鲜明度、照片效果。



PAL DSC-HX10(JE)
Open Price

| | | | | |
|---|--|---------------------------------------|---|---------------------------------------|
| 18.2 Megapixels 1820万有效像素 | "Exmor R" CMOS Sensor "Exmor R" CMOS影像传感器 | 16x Optical Zoom 16倍光学变焦 | Up to 32x Clear Image Zoom 最高32倍清晰影像变焦 | 24mm Wide-angle 24mm广角焦距 |
| Optical *2 SteadyShot 光学防抖 | AVCHD Full HD Movie AVCHD格式全高清动态影像 | Hi-speed AF 自动对焦功能 | 9 Picture Effect 9照片效果 | Background Defocus 背景虚化 |
| Superior Auto iA+ 增强自动 | 3D Sweep Panorama 3D扫描全景 | Smile Shutter 微笑快门 | | |

921K dots
Xtra Fine TFT LCD



Multilingual Menu Display
多语言菜单显示

English / Chinese (Simplified Chinese / Traditional Chinese) 中文 (简体中文 / 繁体中文) / French / Korean / Portuguese / Spanish / Arabic / Persian / Thai / Malay / Indonesian / Vietnamese / Brazilian Portuguese

Instruction Manual
使用说明书

English / Chinese (Simplified Chinese / Traditional Chinese) 中文 (简体中文 / 繁体中文) / Korean / Brazilian Portuguese / Spanish

*1 Movies and still images recorded with this camera can be output by TV that supports PAL System. 支持PAL制式的电视可输出本相机拍摄动态影像和静态图像。 *2 The SteadyShot function may not work with excessive camera shake or extremely slow shutter speeds. 幅度过大的相机震动或反应过慢的快门速度均有可能使防抖功能失效。 *3 Depending on the shooting environment, there may be times when faces cannot be detected and the shutter does not function. Faces may be indistinguishable because of the shooting environment or individual subject traits. 由于拍摄环境的不同，有时人脸未能被检测出来，此时快门不起作用。因拍摄环境或拍摄主体的某些特性不同，均有可能导致人脸未能被识别出来。

※ CMOS Sensor photo is an image. CMOS影像传感器是图像。 ※Please refer to page 37 for product specifications and page 21 for accessories. 关于本产品的规格，请参阅第37页；配件请参阅第21页。 ★For information about the prices of "Open Price" products, please contact your nearest Sony product retailer. ★All insets contained here in are simulated pictures only. ★如需了解关于"Open Price(价格未定)"产品的价格信息，请就近向索尼产品零售店咨询。★此处包含的所有插图均为模拟图片，仅供参考。



Full HD movie & 3D in one Waterproof body with 3.3" Wide & Touch OLED panel

防水机身, 集全高清动态影像和3D影像拍摄于一体, 具备3.3"宽屏触摸OLED (有机发光显示屏) 面板



MADE IN JAPAN 日本制造(主机)

PAL DSC-TX200(JE) Open Price

| | | | | |
|--|---|-------------------------------------|---|---------------------------------------|
| 18.2 Megapixels 1820万有效像素 | "Exmor R" CMOS Sensor "Exmor R" CMOS影像传感器 | 5x Optical Zoom 5倍光学变焦 | Up to 10x Clear Image Zoom 最高10倍清晰影像变焦 | 26mm Wide-angle 26mm广角焦距 |
| Optical *2 SteadyShot 光学防抖 | AVCHD Full HD Movie AVCHD格式全高清动态影像 | Hi-speed AF 自动对焦功能 | 9 Picture Effect 9照片效果 | Background Defocus 背景虚化 |
| Superior Auto iA+ 增强自动 | 3D 3D Sweep Panorama 3D扫描全景 | Smile Shutter 微笑快门 | | |

Waterproof / Dustproof 防水 / 防尘

Designed to fit seamlessly into your active lifestyle, this innovative camera is certified waterproof and dustproof.

本款创新型相机的设计能完美融入您积极的生活方式, 经过了防水和防尘认证。



5.0m / 16ft. for 60min.
符合IEC 60529 IPX8*4标准
符合5.0m水深60分钟时长的IEC 60529 IPX8*4标准

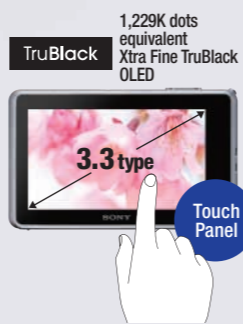
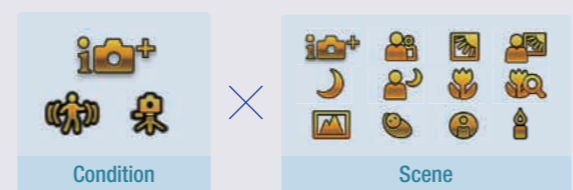
IEC 60529 IP5X*4 compliant
符合IEC 60529 IP5X*4标准

*4 JIS / IEC International Protection Rating equivalent (Based on Sony Testing standards) 相当于JIS / IEC国际防护等级 (基于索尼测试标准) Note: Protection against damage and leakage are not guaranteed. Temperature and drop data results were internally determined by Sony. 注: 不能保证不会发生损坏及漏水。温度及跌落数据结果由索尼内部测定。

Superior Auto 增强自动

It recognizes up to 36 patterns of scenes and automatically selects the optimal shooting mode. Its "Tracking Focus" function always keeps your subject in focus, while the enhanced "HDR Mode" recognizes backlit conditions.

可识别多达36种场景并自动选择最佳拍摄模式。其“焦点跟踪”功能自始至终将拍摄对象保持在对焦状态, 而增强的“HDR模式”可识别背光状态。



Multilingual Menu Display 多语言菜单显示
English / Chinese (Simplified Chinese / Traditional Chinese) 中文 (简体中文 / 繁体中文) / French / Korean / Portuguese / Spanish / Arabic / Persian / Thai / Malay / Indonesian / Vietnamese / Brazilian Portuguese

Instruction Manual 使用说明书
English / Chinese (Simplified Chinese / Traditional Chinese) 中文 (简体中文 / 繁体中文) / Korean / Brazilian Portuguese / Spanish

DSC-TX200 Usage Notes ● **Precautions regarding covers** Battery/memory card cover and multi connector cover ● Be sure to keep the cover areas free from sand, hair, dust and other small particles. ● Before using "Cyber-shot" in wet environments, make sure the gaskets on the covers are not damaged and that nothing is lodged between them and the covers since even minor damage and small particles can cause leaks. Remove sand, hair, dust and other particles adhering to the camera with a soft, lint-free cloth. In order to prevent damage to the gaskets and covers, do not clean the camera with sharp items. ● Never open either cover when using "Cyber-shot" in wet environments. ● **Lens cover** ● Do not open or close the cover in sandy water since sand may get inside the cover. Once inside, it may be difficult to remove. ● **Maintenance after using the camera in wet environments** ● Water or sand may enter "Cyber-shot" when opening the battery/memory card cover or multi connector cover. Before opening or closing either cover, make sure hands and camera are clean and dry. ● After using "Cyber-shot" in wet environments, soak it in tap water for at least 5 minutes within 1 hour of use. While soaking, lightly shake the camera to remove any salt, sand or other particles that may adhere to it. ● Opening and closing the battery/memory cover and multi connector cover may eventually cause deterioration of the gaskets. We recommend bringing the camera to the store where purchased or a Sony Service Center once a year to replace the gaskets (fee required).

*1 Movies and still images recorded with this camera can be output by TV that supports PAL System. 支持PAL制式的电视可输出本相机拍摄动态影像和静态图像。 *2 The SteadyShot function may not work with excessive camera shake or extremely slow shutter speeds. 幅度过大的相机震动或反应过慢的快门速度均有可能使防抖功能失效。 *3 Depending on the shooting environment, there may be times when faces cannot be detected and the shutter does not function. Faces may be indistinguishable because of the shooting environment or individual subject traits. 由于拍摄环境的不同, 有时人脸未能被检测出来, 此时快门不起作用。因拍摄环境或拍摄主体的某些特性不同, 均有可能导致人脸未能被识别出来。

Original "Mt. Fuji with cherry blossom" stamp for the DSC-TX66(JE)

DSC-TX66(JE) "富士山和樱花" 原创印花



Exception: Original Stamp is not available for the DSC-TX66(JE) White
例外: 白色款DSC-TX66(JE)无法使用原创印花



Original Stamp Exclusively for Overseas Models
海外规格产品专享的原创印花

For your Commemoration of Japan
亲历日本留念

PAL DSC-TX66(JE) Open Price

| | | | | |
|--|---|-------------------------------------|---|---------------------------------------|
| 18.2 Megapixels 1820万有效像素 | "Exmor R" CMOS Sensor "Exmor R" CMOS影像传感器 | 5x Optical Zoom 5倍光学变焦 | Up to 10x Clear Image Zoom 最高10倍清晰影像变焦 | 26mm Wide-angle 26mm广角焦距 |
| Optical *2 SteadyShot 光学防抖 | AVCHD Full HD Movie AVCHD格式全高清动态影像 | Hi-speed AF 自动对焦功能 | 9 Picture Effect 9照片效果 | Background Defocus 背景虚化 |
| Superior Auto iA+ 增强自动 | 3D 3D Sweep Panorama 3D扫描全景 | Smile Shutter 微笑快门 | | |

* Image only; may differ in appearance from the actual stamp.
图片仅供参考, 可能与实际印花有所不同。



Touch Panel 触摸屏

Navigate easily with a simple touch on the touch panel by swiping on the display to scroll through your images. Along with a simple drag-and-drop operation, you can customize your screen to suit your style. Additionally, the high quality color reproduction on the 3.3" OLED Touch Panel produces breathtaking images in lifelike colors, you may forget that you're looking at a camera display.

为您提供直观操作, 只需滑动或轻击触摸屏即可进行轻松浏览。配合简单的拖放操作, 可以根据自己的风格定制屏幕。此外, 3.3" OLED (有机发光显示屏) 触摸屏具备高品质色彩再现能力, 以逼真的色彩再现令人惊叹的影像, 您或许都会忘记了自己观看的是相机屏幕。



Easy 3D Shooting 轻松3D拍摄

A wide range of subjects can now be shot in 3D, including close-ups of flowers, food shots, portraits and other objects. Creating 3D photos of everyday objects is now easy.

包括花朵特写、美食摄影、人像及其他景物在内的各种各样拍摄主体, 现均可采用3D模式进行拍摄。每日轻松创作景物的3D照片。



Multilingual Menu Display 多语言菜单显示
English / Chinese (Simplified Chinese / Traditional Chinese) 中文 (简体中文 / 繁体中文) / French / Korean / Portuguese / Spanish / Arabic / Persian / Thai / Malay / Indonesian / Vietnamese / Brazilian Portuguese

Instruction Manual 使用说明书
English / Chinese (Simplified Chinese / Traditional Chinese) 中文 (简体中文 / 繁体中文) / Korean / Brazilian Portuguese / Spanish

DSC-TX200 使用注意事项 ● **盖子相关注意事项** 电池/存储卡盖及多用途接口盖 ● 请确保盖子区域避免接触沙粒、头发、灰尘及其他微小杂质。● 在潮湿环境下使用"Cyber-shot"数码相机之前, 请确保盖子上的垫圈没有破损且垫圈与盖子之间没有嵌入任何杂质, 否则即使轻微的破损或微小的杂质都可能造成漏水。请用柔软的无纺布清除粘附在相机上的沙粒、头发、灰尘及其他杂质。● 为了避免垫圈和盖子的破损, 请勿使用锐利的物品清洁相机。● 在潮湿环境下使用"Cyber-shot"数码相机的过程中, 切勿开启盖子。● **镜头盖** ● 请勿在混有沙粒的水中开启或关闭盖子, 否则沙粒可能进入盖子内部。一旦进入则很难清除。● **潮湿环境下使用相机后的保养** 开启电池/存储卡盖或多用途接口盖时, 水或沙粒可能会进入"Cyber-shot"数码相机。开启或关闭电池/存储卡盖之前, 请确保手和相机清洁干燥。● 在潮湿环境下使用"Cyber-shot"数码相机之后, 需在使用后的1小时以内于自来水中浸泡至少5分钟。浸泡过程中, 请轻轻晃动相机清除所有可能黏附着的盐分、沙粒或其他杂质。● 开启和关闭电池/存储卡盖及多用途接口盖可能会最终导致垫圈性能下降。建议将相机每年一次送至购买商店或索尼服务中心进行垫圈更换 (需要收费)。

* Please refer to page 37-38 for product specifications and page 21 for accessories. 关于本产品的规格, 请参阅第37-38页; 配件请参阅第21页。
★ For information about the prices of "Open Price" products, please contact your nearest Sony product retailer. ★ All insets contained here in are simulated pictures only.
★ 如需了解关于"Open Price(价格未定)"产品的价格信息, 请就近向索尼产品零售商联系咨询。★ 此处包含的所有插图均为模拟图片, 仅供参考。



Full HD movie & 3D in one compact body with 10x optical zoom

机身小巧, 集全高清影像和3D影像拍摄于一体, 10倍光学变焦

Original Stamp Exclusively for Overseas Models 海外规格产品专享的原创印花



For your Commemoration of Japan 亲历日本留念

DSC-WX170(JE) PAL Open Price NEW

Table with 5 columns: 18.2 Megapixels, Exmor R CMOS Sensor, 10x Optical Zoom, Up to 20x Clear Image Zoom, 25mm Wide-angle. Includes features like Superior Auto iA+, Intelligent Sweep Panorama, and Smile Shutter.

Image only; may differ in appearance from the actual stamp. 图片仅供参考, 可能与实际印花有所不同。



16.1 Megapixels CCD and 25mm wide-angle Carl Zeiss lens with 5x zoom

1610万像素CCD及5倍变焦的25mm广角卡尔·蔡司镜头



DSC-W630(JE) Open Price

Table with 4 columns: 16.1 Megapixels, Super HAD CCD, 5x Optical Zoom, 25mm Wide-angle. Includes features like Optical SteadyShot, 720p HD Movie, and Intelligent Auto.

14.1 Megapixels CCD and 26mm wide-angle lens with 4x zoom

1410万像素CCD及4倍变焦的26mm广角镜头



DSC-W610(JE) Open Price

Table with 4 columns: 14.1 Megapixels, Super HAD CCD, 4x Optical Zoom, 26mm Wide-angle. Includes features like SteadyShot, Motion JPEG, and Intelligent Auto.

Multilingual Menu Display 多语言菜单显示 English / Chinese (Simplified Chinese / Traditional Chinese) 中文 (简体中文 / 繁体中文) / French / Korean / Portuguese / Spanish / Arabic / Persian / Thai / Malay / Indonesian / Vietnamese / Brazilian Portuguese

Instruction Manual 使用说明书 English / Chinese (Simplified Chinese / Traditional Chinese) 中文 (简体中文 / 繁体中文) / Korean / Brazilian Portuguese / Spanish

Please refer to page 38-39 for product specifications and page 21 for accessories. 关于本产品的规格, 请参阅第38-39页; 配件请参阅第21页。

*1 Movies and still images recorded with this camera can be output by TV that supports PAL System. *2 The SteadyShot function may not work with excessive camera shake or extremely slow shutter speeds. *3 Depending on the shooting environment, there may be times when faces cannot be detected and the shutter does not function.

Digital Camcorder Accessories 数码摄像机配件

Please refer to page 39 for compatibility. 有关兼容性的内容, 请参阅第39页。

Overseas Models 海外规格产品

Rechargeable Battery Pack 可重复充电电池

NP-FV100(JE) Open Price



ActiFORCE™ Voltage 6.8V Capacity 26.5Wh (3,900mAh) Mass 195g

NP-FV70(JE) Open Price



ActiFORCE™ Voltage 6.8V Capacity 14.0Wh (2,060mAh) Mass 96g

NP-FV50(JE) Open Price



ActiFORCE™ Voltage 6.8V Capacity 7.0Wh (1,030mAh) Mass 51g

Accessory Kit 配件套装

ACC-FV50B(JE) Open Price



Mass 260g Bundled Accessories: Rechargeable Battery: NP-FV50 / Soft Carrying Case: LCS-X21

ACC-BBV5(JE) Open Price



Mass 70g Bundled Accessories: Rechargeable Battery: NP-FV50 / Soft Carrying Case: LCS-BBD B

Shooting Grip with Mini Tripod 小型三脚架拍摄手柄

GP-AVT1(JE) Open Price



Dimensions: Max. Height 96mm, Folded Length 132mm, Mass 114g

Convenient built-in Tripod 方便使用的内置三脚架

Remote Control Functions 遥控功能

Other Accessories Available in Japan 在日本可购买的其他配件

Carrying Case 便携包

LCS-U30 M.S.R.P. 4,410 yen (tax excluded 4,200 yen)



Dimensions: 290 x 170 x 140mm Mass 405g

LCS-U20 M.S.R.P. 3,255 yen (tax excluded 3,100 yen)



Dimensions: 220 x 150 x 140mm Mass 315g

LCS-U10 M.S.R.P. 2,730 yen (tax excluded 2,600 yen)



Dimensions: 170 x 130 x 100mm Mass 215g

LCS-ACB M.S.R.P. 4,410 yen (tax excluded 4,200 yen)



Dimensions: 115 x 200 x 90mm Mass 140g

LCS-BBG M.S.R.P. 3,255 yen (tax excluded 3,100 yen)



Dimensions: 100 x 280 x 95mm Mass 110g

ActiFORCE™ is a new generation power system. Battery capacity, boost charge, and the speed and accuracy of battery time remaining calculations have been improved when compared with previous "InfoLITHIUM" P-series batteries.

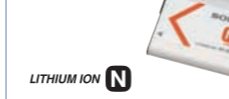
Digital Still Camera Accessories 数码相机配件

Please refer to page 39 for compatibility. 有关兼容性的内容, 请参阅第39页。

Overseas Models 海外规格产品

Rechargeable Battery Pack 可重复充电电池

NP-BN1(JE) Open Price



LITHIUM ION Voltage 3.6V Capacity 2.3Wh (630mAh) Mass 15g

NP-FG1(JE) Open Price



ActiFORCE™ Voltage 3.6V Capacity 3.4Wh (960mAh) Mass 27g

NP-BX1(JE) Open Price NEW



LITHIUM ION Voltage 3.6V Capacity 4.5Wh (1,240mAh) Mass 25g

2NP-BN1(JE) Open Price



LITHIUM ION Dual rechargeable battery pack Includes 2x NP-BN1

ACC-CTBN(JE) Open Price



Mass 60g Bundled Accessories: Soft Carrying Case: LCS-CTBN / Rechargeable battery: NP-BN1 / Tripod: VCT-ACA

Other Accessories Available in Japan 在日本可购买的其他配件

Carrying Case 便携包

LCS-TWH M.S.R.P. 2,205 yen (tax excluded 2,100 yen)



Dimensions: 118 x 84 x 22mm

LCS-THQ M.S.R.P. 3,150 yen (tax excluded 3,000 yen)



Dimensions: 68 x 101 x 23mm

LCS-WM M.S.R.P. 3,255 yen (tax excluded 3,100 yen)



Dimensions: 72 x 118 x 40mm

*4 The mass of the soft carrying case. 软便携包的重量。

For information about the prices of "Open Price" products, please contact your nearest Sony product retailer. All insets contained here in are simulated pictures only. 如需了解关于"Open Price(价格未定)"产品的价格信息, 请就近向索尼产品零售商家联系咨询。



Professional quality in your pocket

掌中专业品质



NEX-7K(JE)

Open Price
Single lens kit
Kit lens: E 18-55mm F3.5-5.6 OSS (B)

| | | | |
|--|---------------------------------------|---|---|
| 24.3 Megapixels 2430万有效像素 | ISO 100-16000 ISO 100-16000 | Full HD Movie 50p / 50i / 25p 全高清动态影像 50p / 50i / 25p | Continuous shooting Up to 10 fps 最高每秒10帧的连拍 |
|--|---------------------------------------|---|---|

- Quick response, including Hi-speed AF and release time lag of only 0.02 sec.
- Customizable, intuitive new TRINAVI operation for freer expression
- Speed Priority Continuous shooting at up to 10 fps
- Lightweight and robust magnesium-alloy body

- 配合自动对焦功能, 可实现最快约0.02秒的快门速度
- 可定制的直观全新TRINAVI操作, 任您自由表现
- 速度优先连续拍摄, 连拍最高可达每秒10张
- 轻便耐用的镁合金机身



921K dots Xtra Fine LCD TruBlack monitor



NEX-5ND(JE)

Open Price
Double lens kit
Kit lens: E 16mm F2.8 E 18-55mm F3.5-5.6 OSS

| | |
|---|---|
| 16.1 Megapixels 1610万有效像素 | ISO 100-25600 ISO 100-25600 |
| Full HD Movie 50p / 50i / 25p 全高清动态影像 50p / 50i / 25p | Continuous shooting Up to 10 fps 最高每秒10帧的连拍 |



- Quick response, including Hi-speed AF and release time lag of only 0.02 sec.
- Touch screen operation for adjusting, shooting and viewing
- Lightweight and robust magnesium-alloy body
- 配合自动对焦功能, 可实现最快约0.02秒的快门速度
- 触摸屏操作, 适合调节、拍摄和浏览
- 轻便耐用的镁合金机身



Multilingual Menu Display 多语言菜单显示
English / Chinese (Simplified Chinese / Traditional Chinese) 中文 (简体中文 / 繁体中文) / French / Korean / Portuguese / Spanish / Arabic / Persian / Thai / Malay



NEX-F3K(JE)

Open Price
Single lens kit
Kit lens: E 18-55mm F3.5-5.6 OSS

| | |
|---|---|
| 16.1 Megapixels 1610万有效像素 | ISO 200-16000 ISO 200-16000 |
| Full HD Movie 50i / 25p 全高清动态影像 50i / 25p | Continuous shooting Up to 5.5 fps 最高每秒5.5帧的连拍 |



- Auto Portrait Framing for professional-looking photos
- Clear Image Zoom for clear, high-resolution telephoto shots
- 自动肖像构图可拍摄出专业级的照片
- 清晰影像缩放造就清晰的高分辨率远摄拍照

180°tiltable LCD screen for easy self-portraits 方便自拍的180°可翻转液晶屏



Instruction Manual 使用说明书
English / Chinese (Simplified Chinese / Traditional Chinese) 中文 (简体中文 / 繁体中文) / Korean / Spanish / Portuguese

“Exmor” APS HD CMOS Sensor for SLR-class photographic quality

“Exmor” APS高清CMOS影像传感器, 实现单反相机级别的摄影品质



Exmor APS HD CMOS

Background Defocus Control brings foreground subjects to life

背景虚化控制, 令前景拍摄主体栩栩如生



More background defocusing 更多背景虚化

Less background defocusing 更少背景虚化

Picture Effect

Amazing new Picture Effect function for artistic expression

照片效果 惊艳的照片效果功能, 完美诠释艺术表现力



Interchangeable Lens Digital Camera Accessories 数码微单相机配件

[For NEX-7 / NEX-5N / NEX-F3]

Rechargeable Battery Pack 可重复充电电池

NP-FW50(JE)
Open Price

• Voltage 电压: 7.2V
• Capacity 容量: 7.7Wh (1080mAh)
• Mass 重量: 57g



MADE IN JAPAN 日本制造 (主机)

Accessory Kit 配件套装

ACC-FWCA(JE)
Open Price

• Bundled Accessories 随机配件:
Rechargeable Battery: NP-FW50 / Wrapping Cloth: LCS-WR1AM / Shoulder Strap: STP-XS2AM / Lens Cap Holder: LCS-LC1AM



MADE IN JAPAN 日本制造 (主机)

ACC-HDFW(JE)
Open Price

• Bundled Accessories 随机配件:
Rechargeable Battery: NP-FW50 / HDMI mini cable 2.0m: DLC-HEM20



MADE IN JAPAN 日本制造 (主机)

※Please refer to page 40 for product specifications and page 23 for accessories. 关于本产品的规格, 请参阅第40页; 配件请参阅第23页。

★The maximum length of time you can shoot continuously is approx. 29 minutes. The size of a movie file is limited to approx. 2GB. ★最长连续拍摄时间约为29分钟。动态影像档案大小上限约为2GB。

★Movies and still images recorded with this camera can be output by TV that supports PAL System. 支持PAL制式的电视可输出本相机拍摄的动态影像和静态图像。

※CMOS Sensor photo is an image. CMOS影像传感器照片是示意图。

★For information about the prices of “Open Price” products, please contact your nearest Sony product retailer. ★All insets contained here in are simulated pictures only.

★如需了解关于“Open Price(价格未定)”产品的价格信息, 请就近向索尼产品零售商联系咨询。★此处包含的所有插图均为模拟图片, 仅供参考。



Never miss the moment

绝不错失良机



PAL **SLT-A77VQ(JE)** Single lens kit
Open Price Kit lens: DT 16-50mm F2.8 SSM

| | | | |
|--|---------------------------------------|---|---|
| 24.3 Megapixels 2430万有效像素 | ISO 100-16000 ISO 100-16000 | Full HD Movie 50p / 50i / 25p 全高清动态影像 50p / 50i / 25p | Continuous shooting Up to 12 fps 最高每秒12帧的连拍 |
|--|---------------------------------------|---|---|

- Ultra-high-speed 12 fps continuous shooting with Full-time Continuous AF
- 19-point AF system with 11 cross sensors
- New XGA OLED Tru-Finder with 100% coverage
- Rigid Magnesium alloy body
- 全时自动对焦, 连拍最高可达每秒12张
- 11个十字传感器, 19点自动对焦系统
- 100%覆盖范围的全新XGA OLED Tru-Finder
- 坚固的镁合金机身

921K dots Xtra Fine LCD TruBlack monitor

3.0 type

Translucent Mirror Technology

Full HD 1080

3D world Created by Sony

Exmor™ FPS HD CMOS

AVCHD Progressive

XGA OLED Tru-Finder

3D Sweep Panorama

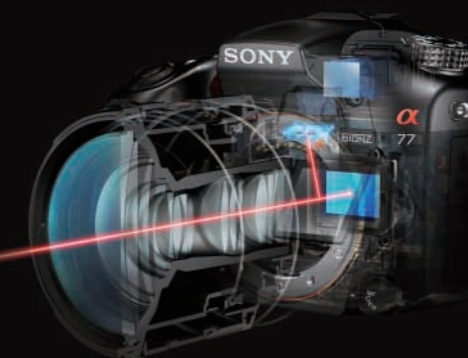
Translucent Mirror Technology

Translucent Mirror Technology for Full-time Continuous AF

半透镜技术实现, 全时连续AF

Exclusive Sony Translucent Mirror Technology eliminates the need for mechanical mirror movement and enables continuous precision phase-detection autofocus whether you're shooting stills or movies, or viewing via the viewfinder or LCD monitor. Another advantage is that the subject stays in view at the moment of capture.

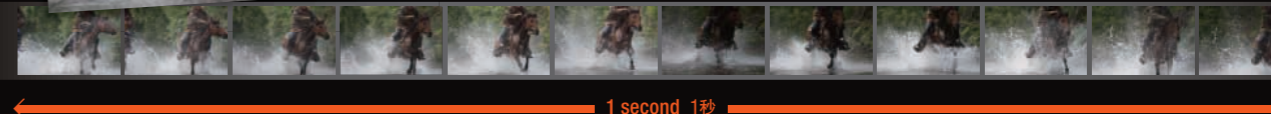
无论是拍摄静态图像或动态影像, 还是通过取景器或液晶屏浏览, 索尼独特的半透镜技术实现均可以免除机械反光镜的移动, 并且能够进行连续精确的相位检测自动对焦。另外一个优势是在拍摄时拍摄主体总处于视线之内。



Ultra high-speed response 超高速响应

Sony's mirror-drive-free Translucent Mirror Technology enables professional level performance — 12 fps continuous shooting with Full-time Continuous AF at 24.3-megapixel resolution. (SLT-A77V)

无需反光镜升降动作的索尼半透镜技术实现能够实现专业级性能 — 2430万像素分辨率和全时自动对焦, 连拍最高可达每秒12张。(SLT-A77V)



1 second 1秒

Quick AF movie 快速AF动态影像

Translucent Mirror Technology enables Full-time Continuous AF during movie shooting while face detection maintains fast, high-precision subject focus at all times.

半透镜技术实现能够在拍摄动态影像时全时连续对焦, 同时通过人脸检测始终维持对拍摄主体的快速、高精度的对焦。



PAL **SLT-A65VK(JE)** Single lens kit
Open Price Kit lens: DT 18-55mm F3.5-5.6 SAM

| | | | |
|--|---------------------------------------|---|---|
| 24.3 Megapixels 2430万有效像素 | ISO 100-16000 ISO 100-16000 | Full HD Movie 50p / 50i / 25p 全高清动态影像 50p / 50i / 25p | Continuous shooting Up to 10 fps 最高每秒10帧的连拍 |
|--|---------------------------------------|---|---|

- Ultra-high-speed 10 fps continuous shooting with Full-time Continuous AF
- 15-point AF system with 3 cross sensors for pinpoint focus
- New XGA OLED Tru-Finder with 100% coverage
- 全时自动对焦, 连拍最高可达每秒10张
- 3个十字传感器, 15点自动对焦系统
- 100%覆盖范围的全新XGA OLED Tru-Finder

921K dots Xtra Fine LCD TruBlack monitor

3.0 type

Translucent Mirror Technology

Full HD 1080

3D world Created by Sony

Exmor™ FPS HD CMOS

AVCHD Progressive

XGA OLED Tru-Finder

3D Sweep Panorama



PAL **SLT-A57M(JE)** Single lens kit
Open Price **NEW** Kit lens: DT 18-135mm F3.5-5.6 SAM

| | | | |
|--|---------------------------------------|---|---|
| 16.1 Megapixels 1610万有效像素 | ISO 100-16000 ISO 100-16000 | Full HD Movie 50p / 50i / 25p 全高清动态影像 50p / 50i / 25p | Continuous shooting Up to 12 fps 最高每秒12帧的连拍 |
|--|---------------------------------------|---|---|

- Ultra-high-speed 12 fps continuous shooting with Full-time continuous AF
- 15-point AF system with 3 cross sensors for pinpoint focus
- Auto Portrait Framing for professional-looking photos
- Clear Image Zoom for clear, high-resolution telephoto shots
- 全时自动对焦, 连拍最高可达每秒12张
- 3个十字传感器, 15点自动对焦系统
- 自动肖像构图, 可拍摄专业水准照片
- 清晰影像缩放, 实现清晰的高分辨率远摄

921K dots Xtra Fine LCD TruBlack monitor

3.0 type

Translucent Mirror Technology

Full HD 1080

3D world Created by Sony

Exmor™ FPS HD CMOS

AVCHD Progressive

XGA OLED Tru-Finder

3D Sweep Panorama

Picture Effect: tools for greater expressive impact 照片效果: 增强表现力的工具

With DT 35mm F1.8 SAM (SAL35F18) in Picture Effect "Partial Color (Red)" mode 采用DT 35mm F1.8 SAM (SAL35F18), 照片效果 "局部彩色 (红)" 模式



Sweep Panorama (2D/3D) 扫描全景 (2D/3D)



With DT 16-105mm F3.5-5.6 (SAL16105) in Sweep Panorama Mode 采用DT 16-105mm F3.5-5.6 (SAL16105), 扫描全景模式

Multilingual Menu Display 多语言菜单显示
English / Chinese (Simplified Chinese / Traditional Chinese) 中文 (简体中文 / 繁体中文) / French / Korean / Portuguese / Spanish / Arabic / Persian / Thai / Malay

Instruction Manual 使用说明书
English / Chinese (Simplified Chinese / Traditional Chinese) 中文 (简体中文 / 繁体中文) / Korean / Portuguese / Spanish

Interchangeable Lens Digital Camera Accessories

数码单电相机配件

[For SLT-A77V / SLT-A65V / SLT-A57]

Rechargeable Battery Pack 可重复充电电池

NP-FM500H(JE) Open Price
• Voltage 电压: 7.2V
• Capacity 容量: 11.8Wh (1650mAh)
• Mass 重量: 78g



MADE IN JAPAN 日本制造 (主机)



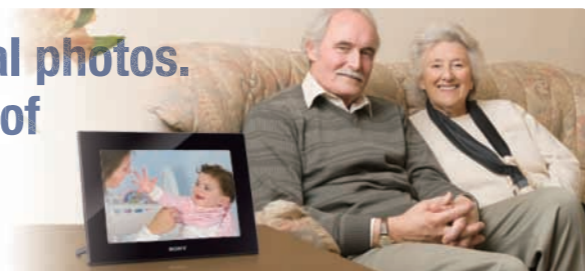
*Please refer to page 41 for product specifications and page 25 for accessories. 关于本产品的规格, 请参阅第41页; 配件请参阅第25页。
★The maximum length of time you can shoot continuously is approx. 29 minutes. The size of a movie file is limited to approx. 2GB. ★最长连续拍摄时间约为29分钟。动态影像档案大小上限约为2GB。
† Movies and still images recorded with this camera can be output by TV that supports PAL System. 支持PAL制式的电视可输出本相机拍摄的动态影像和静态图像。

★For information about the prices of "Open Price" products, please contact your nearest Sony product retailer. ★All insets contained here in are simulated pictures only.
★如需了解关于"Open Price(价格未定)"产品的价格信息, 请就近向索尼产品零售商联系咨询。★此处包含的所有插图均为模拟图片, 仅供参考。



A fantastic way of displaying your digital photos. It allows you to expand your enjoyment of photos after taking them

数码照片的梦幻显示方式。延展照片拍摄之后的乐趣

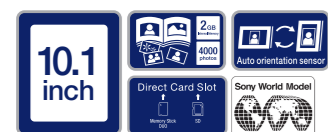


※Photo shown is image. 所示照片仅供参考。

High Quality LCD widescreen and Full HD playback

高品质宽屏液晶屏和全高清播放

Internal Memory 2GB DPF-HD1000(JE) Open Price



(B) Black

Stylish, contemporary looks and a clear view of your photos

时尚潮流外观，清晰欣赏照片

No Internal Memory DPF-C800(JE) Open Price



(B) Black

(N) Gold

Come with Overseas Model original exchangeable panel

海外规格特别产品，附送可更换面板



Internal Memory 128MB DPF-E710(JE) Open Price



Simple function, Easy to use

功能简单，使用方便

No Internal Memory DPF-C70A(JE) Open Price



(B) Black

It's a photo frame and printer all-in-one

数码相框照片打印一体机

Internal Memory 256MB DPP-F800(JE) Open Price



(W) White



4 x 6 inch Color Print Pack 4x6英寸彩色打印套装 SVM-F120P(JE) Open Price

Instruction Manual 使用说明书

Japanese / English / Chinese (Simplified Chinese) 中文 (简体中文) / Korean

※Please refer to page 40-41 for product specifications. 关于本产品的规格，请参阅第40-41页。

Recording Media 索尼存储卡

"Memory Stick PRO Duo"



- 4GB MS-MT4G(JE) Open Price
2GB MS-MT2G(JE) Open Price

MAGICGATE™

"Memory Stick PRO-HG Duo HX"



- 8GB MS-HX8B(JE) Open Price

SDHC Memory Card



- 32GB SF-32N4(JE) Open Price
16GB SF-16N4(JE) Open Price
8GB SF-8N4(JE) Open Price
4GB SF-4N4(JE) Open Price

SD Memory Card



- 2GB SF-2N1(JE) Open Price

microSDHC Memory Card



- 16GB SR-16A4(JE) Open Price
8GB SR-8A4(JE) Open Price
4GB SR-4A4(JE) Open Price

SD Memory Card conversion adaptor supplied. 附带SD存储卡转换适配器。



Card size radio [Traditional Japanese design]

卡片收音机 [传统日本设计]



MADE IN JAPAN 日本制造(主机)

SRF-220(JE) M.S.R.P. 6,300 yen (tax excluded 6,000 yen)



(L) Mt. Fuji



(V) Night Scene (R1) Bidoro wo fuku musume



(L1) Namiura (W) Shinkansen (B1) Sumou Wrestling

International shortwave broadcast receivable radio

可接收国际短波广播的收音机

MADE IN JAPAN 日本制造(主机)

ICF-SW7600GR(JE) M.S.R.P. 42,000 yen (tax excluded 40,000 yen)



Stereo

ICF-SW35(JE) M.S.R.P. 20,790 yen (tax excluded 19,800 yen)



Stereo

MADE IN JAPAN 日本制造(主机)

ICF-SW22(JE) M.S.R.P. 13,650 yen (tax excluded 13,000 yen)



Monaural

ICF-SW11(JE) M.S.R.P. 8,190 yen (tax excluded 7,800 yen)



Stereo

※Please refer to page 42 for product specifications. 关于本产品的规格，请参阅第42页。

Compact size radio

小型收音机

MADE IN JAPAN 日本制造(主机)

SRF-T615(JE) M.S.R.P. 9,870 yen (tax excluded 9,400 yen)



- FM stereo / AM / PLL synthesizer radio
FM立体声/AM/PLL 合成器收音机

SRF-M97(JE) M.S.R.P. 8,190 yen (tax excluded 7,800 yen)



- Clip (on back side) for carrying convenience
夹子位于背面携带更方便

SRF-S84(JE) M.S.R.P. 5,040 yen (tax excluded 4,800 yen)



- Compact, cigarette-lighter-sized body
小巧的机身，大小如同打火机

ICF-R46(JE)

M.S.R.P. 6,825 yen (tax excluded 6,500 yen)



- Only 12.4mm slimness and slips easily into your breast pocket
仅12.4mm的纤薄机身，可轻易置于胸袋内

ICF-T46(JE)

M.S.R.P. 4,725 yen (tax excluded 4,500 yen)



- Only 12.4mm slimness and slips easily into your breast pocket
仅12.4mm的纤薄机身，可轻易置于胸袋内

Instruction Manual 使用说明书

ICF-SW22: English / Korean / Japanese

Others: English / Chinese (Simplified Chinese) 中文 (简体中文) / Korean / Japanese

★For information about the prices of "Open Price" products, please contact your nearest Sony product retailer. ★All insets contained here in are simulated pictures only. ★如需了解关于“Open Price(价格未定)”产品的价格信息，请就近向索尼产品零售商联系咨询。★此处包含的所有插图均为模拟图片，仅供参考。

A series



NWZ-A866(JE)
● (B) Black

NWZ-A865(JE)
● (W) White ● (B) Black

Hybrid Operation with touch panel, and Wireless Streaming with superior sound experience
采用触摸屏混合操作 超高音质无线世界体验

Built-in Memory
32GB NWZ-A866(JE)
Open Price

Built-in Memory
16GB NWZ-A865(JE)
Open Price

Bluetooth®
The Bluetooth function is applicable in Bahrain / Iran / Kuwait / Lebanon / Qatar / Saudi Arabia / UAE / Bangladesh / Bhutan / Brunei / Cambodia / Indonesia / Malaysia / Maldives / Myanmar / Nepal / Philippines / Singapore / Sri Lanka / Thailand / Vietnam / Hong Kong / Korea / Taiwan / Australia / New Zealand

FMtuner FM调谐器
87.5 >>>> 108.0 MHz

Music 音乐
Continuous Playback 23 h.
连续播放23小时

Video 视频
Continuous Playback 5 h.
连续播放5小时

12 TONE ANALYZER

Audio Formats (Codec) 音频格式(编解码器)
MP3 / WMA*3 / AAC-LC*3 / Linear PCM

Touch Panel 触摸屏
Digital Amplifier 数字放大器
Bluetooth® 蓝牙
Karaoke Mode 卡拉OK模式
Synchronized Lyrics 歌词同步
Language Study 语言学习

※Please refer to the feature icons below. 关于功能图标, 请参阅本页以下部分。

W series



● (P) Pink ● (W) White
● (L) Blue ● (B) Black

Wire-free and Water-resistant Compact and light desing for comfortable fit
无线且防水 佩戴舒适的小巧轻便设计

Built-in Memory
2GB NWZ-W262(JE)
Open Price

Music 音乐
Continuous Playback 8 h.
连续播放8小时

Water Resistance 防水

12 TONE ANALYZER

ZAPPIN®

Audio Formats (Codec) 音频格式(编解码器)
MP3 / WMA / AAC-LC*3 / Linear PCM

Water Resistance 防水
Washing under running water • Place under running tap (low/medium flow) and wash with hand. • Do not use brush, sponge, soap or detergent.
Taking a shower • Do not immerse in water. • Avoid contact with use of shampoo, conditioner, face wash and soap. • Do not use with high pressure showers.
流水清洗 • 置于(低速/中速)流动的自来水下并用手清洗。 • 请勿使用刷子、海绵、肥皂或洗涤剂。 • 避免接触使用洗发水、护发剂、洁面乳和肥皂。 • 请勿使用高压喷头。

Instruction Manual *6 使用说明书 English / Chinese (Simplified Chinese / Traditional Chinese) 中文(简体中文 / 繁体中文) / Korean / Arabic / French / German / Spanish / Dutch / Italian / Portuguese / Swedish / Danish / Finnish / Russian / Hungarian / Czech / Turkish / Polish / Greek / Slovak / Norwegian / Ukrainian / Brazilian Portuguese / Romanian / Bulgarian / Slovene

S series



NWZ-S764(JE)
● (N) Gold ● (W) White ● (B) Black

NWZ-S764BT(JE)
● (B) Black

Wireless listening Experience and File sharing with premium sound and long battery life
享受无线世界及轻松传输功能 高品质音质和长寿命电池

Built-in Memory
8GB NWZ-S764(JE)
Open Price

Built-in Memory
8GB NWZ-S764BT(JE)
Open Price

Bluetooth®
The Bluetooth function is applicable in Bahrain / Iran / Kuwait / Lebanon / Qatar / Saudi Arabia / UAE / Bangladesh / Bhutan / Brunei / Cambodia / Indonesia / Malaysia / Maldives / Myanmar / Nepal / Philippines / Singapore / Sri Lanka / Thailand / Vietnam / Hong Kong / Korea / Taiwan / New Zealand

FMtuner FM调谐器
87.5 >>>> 108.0 MHz

Music 音乐
Continuous Playback 50 h.
连续播放50小时

Video 视频
Continuous Playback 10 h.
连续播放10小时

12 TONE ANALYZER

Audio Formats (Codec) 音频格式(编解码器)
MP3 / WMA*3 / AAC-LC*3 / Linear PCM

Bluetooth® headphones supplied 附带Bluetooth®耳机

※Please refer to the feature icons below. 关于功能图标, 请参阅本页以下部分。

B series



● (B) Black ● (P) Pink
● (R) Red ● (N) Gold
● (L) Blue

Simple & Easy function. Pushing the "ZAP / BASS" button, you can enjoy powerful bass sound
功能简单易用。只需按下“ZAP/BASS”按钮便可欣赏强劲的低音

Built-in Memory
2GB NWZ-B172F(JE)
Open Price

FMtuner FM调谐器
87.5 >>>> 108.0 MHz

Music 音乐
Continuous Playback 18 h.
连续播放18小时

ZAPPIN®

Audio Formats (Codec) 音频格式(编解码器)
MP3 / WMA*3

Multilingual Menu Display 多语言菜单显示 English / French / Spanish / Russian / Chinese (Simplified Chinese / Traditional Chinese) 中文(简体中文 / 繁体中文) / Korean / Portuguese / German

Instruction Manual *6 使用说明书 English / Chinese (Simplified Chinese / Traditional Chinese) 中文(简体中文 / 繁体中文) / Korean / Arabic

E series



NWZ-E473(JE)
● (RQ) Red ● (N) Gold ● (GQ) Green ● (LQ) Blue ● (PQ) Vivid Pink ● (B) Black

NWZ-E473K(JE)
● (B) Black

Fun and Fresh colors and unique attractive design, with an enriched user interface
愉快鲜艳的色彩, 独具魅力的设计, 丰富的用户界面

Built-in Memory
4GB NWZ-E473(JE)
Open Price **NEW**

Built-in Memory
4GB NWZ-E473K(JE)
Open Price **NEW**

Stereo speaker supplied
附带立体声扬声器

Games pre-installed 已预装游戏
Puyo POP FEVER 魔法气泡狂热版
Number Place 九宫数独

FMtuner FM调谐器
87.5 >>>> 108.0 MHz

Music 音乐
Continuous Playback 36 h.
连续播放36小时

Video 视频
Continuous Playback 6 h.
连续播放6小时

12 TONE ANALYZER

Audio Formats (Codec) 音频格式(编解码器)
MP3 / WMA*3 / AAC-LC*3 / Linear PCM

※Please refer to the feature icons below. 关于功能图标, 请参阅本页以下部分。

Compact Cassette Recorder / CD Walkman® 小型盒带录音机 / CD播放器

TCM-400DV(JE)
M.S.R.P. 5,250 yen (tax excluded 5,000 yen)

- V.O.R feature automatically starts recording when sound is detected
- Double-recording-time mode, doubles the recording time
- V.O.R声控录音功能, 能够在检测到声音时自动开始进行录音
- 在Double-recording-time(录音时长加倍)模式下, 可获得双倍录音时长

D-NE241(JE)
Open Price

- Playback of CD-R and CD-RW is enabled
- Incorporates G-Protection, a powerful anti-skip feature
- 可以进行CD-R和CD-RW的重放
- 搭载了永不跳音的G-Protection防止声音跳读

23h. of PLAYBACK
MP3 when using 2 AA alkaline batteries.

Instruction Manual 使用说明书 TCM-400DV: English / Russian / Chinese (Simplified Chinese / Traditional Chinese) 中文(简体中文 / 繁体中文) / Korean / Japanese

D-NE241: English / Chinese (Simplified Chinese) 中文(简体中文)

Feature Icons 功能图标

Touch Panel 触摸屏

Digital Amplifier 数字放大器

Bluetooth® 蓝牙

Karaoke Mode 卡拉OK模式

Synchronized Lyrics 歌词同步

Language Study 语言学习

Multilingual Menu Display 多语言菜单显示 German / English / Spanish / French / Italian / Polish / Portuguese / Russian / Turkish / Japanese / Korean / Chinese (Simplified Chinese / Traditional Chinese) 中文(简体中文 / 繁体中文)

Instruction Manual *6 使用说明书

NWZ-A866 / A865 / S764 / S764BT: English / Chinese (Simplified Chinese / Traditional Chinese) 中文(简体中文 / 繁体中文) / Korean / Arabic / Spanish / Russian / Turkish / Ukrainian

NWZ-E473 / E473K: English / Chinese (Simplified Chinese / Traditional Chinese) 中文(简体中文 / 繁体中文) / Arabic

※Please refer to page 42-43 for product specifications. 关于本产品的规格, 请参阅第42-43页。

*1 When playing MP3 128kbps. The time is approximated when "Bluetooth," "DSEE," "Clear Stereo," "Equalizer," "VPT," "Dynamic Normalizer," "DPC (speed control)," "Display Lyrics," "Karaoke/Language Study," "Battery Care" are deactivated, the Brightness of the Common Setting is set to "3", and "Screen Off Timer" is set to "30 seconds". 当播放MP3 128kbps时, 对于所估算的大致时长, 其估算条件为: "Bluetooth(蓝牙)"、"DSEE(数码音效提升引擎)"、"Clear Stereo(高保真立体声)"、"Equalizer(均衡器)"、"VPT(虚拟环绕立体声技术)"、"Dynamic Normalizer(音量动态平衡器)"、"DPC(数码播放速度控制)"、"Display Lyrics(歌词显示)"、"Karaoke/Language Study(卡拉OK/语言学习)"、"Battery Care(电池保养)"功能均被取消, 并将Common Setting(一般设定)选项中的Brightness(亮度)设置为"3", "Screen Off Timer(屏幕关闭定时器)"设置为"30 seconds(30秒)". *2 When playing MPEG-4 384kbps. The time is approximated when "Bluetooth," "DSEE," "Clear Stereo," "Equalizer," "VPT," "Dynamic Normalizer," "DPC (speed control)," "Display Lyrics," "Karaoke/Language Study," "Battery Care" are deactivated, the Brightness of the Common Setting is set to "3", and "Screen Off Timer" is set to "30 seconds". 当播放MPEG-4 384kbps时, 对于所估算的大致时长, 其估算条件为: "Bluetooth(蓝牙)"、"DSEE(数码音效提升引擎)"、"Clear Stereo(高保真立体声)"、"Equalizer(均衡器)"、"VPT(虚拟环绕立体声技术)"、"Dynamic Normalizer(音量动态平衡器)"、"DPC(数码播放速度控制)"、"Display Lyrics(歌词显示)"、"Karaoke/Language Study(卡拉OK/语言学习)"、"Battery Care(电池保养)"功能均被取消, 并将Common Setting(一般设定)选项中的Brightness(亮度)设置为"3", "Screen Off Timer(屏幕关闭定时器)"设置为"30 seconds(30秒)". *3 Copyright protected files cannot be played back. 不会播放受版权保护的文件。 *4 When playing MP3 128kbps. The time is approximated when "DSEE," "Clear Stereo," "Equalizer," "VPT," "Dynamic Normalizer," "DPC (speed control)," "Display Lyrics," "Karaoke/Language Study," "Battery Care" are deactivated, the Brightness of the Common Setting is set to "3", and "Screen Off Timer" is set to "30 seconds". 当播放MP3 128kbps时, 对于所估算的大致时长, 其估算条件为: "DSEE(数码音效提升引擎)"、"Clear Stereo(高保真立体声)"、"Equalizer(均衡器)"、"VPT(虚拟环绕立体声技术)"、"Dynamic Normalizer(音量动态平衡器)"、"DPC(数码播放速度控制)"、"Display Lyrics(歌词显示)"、"Karaoke/Language Study(卡拉OK/语言学习)"、"Battery Care(电池保养)"功能均被取消, 并将Common Setting(一般设定)选项中的Brightness(亮度)设置为"3", "Screen Off Timer(屏幕关闭定时器)"设置为"30 seconds(30秒)". *5 When playing MPEG-4 384kbps. The time is approximated when "DSEE," "Clear Stereo," "Equalizer," "VPT," "Dynamic Normalizer," "DPC (speed control)," "Display Lyrics," "Karaoke/Language Study," "Battery Care" are deactivated, the Brightness of the Common Setting is set to "3", and "Screen Off Timer" is set to "30 seconds". 当播放MPEG-4 384kbps时, 对于所估算的大致时长, 其估算条件为: "DSEE(数码音效提升引擎)"、"Clear Stereo(高保真立体声)"、"Equalizer(均衡器)"、"VPT(虚拟环绕立体声技术)"、"Dynamic Normalizer(音量动态平衡器)"、"DPC(数码播放速度控制)"、"Display Lyrics(歌词显示)"、"Karaoke/Language Study(卡拉OK/语言学习)"、"Battery Care(电池保养)"功能均被取消, 并将Common Setting(一般设定)选项中的Brightness(亮度)设置为"3", "Screen Off Timer(屏幕关闭定时器)"设置为"30 seconds(30秒)". *6 In the built-in memory. 内置记忆体中。 *7 Support LRC file format. 支持LRC文件格式。 *8 The time may differ depending on ambient temperature or the status of use. 时长会因环境温度或使用状态而异。 *9 During continuous playback in MP3 128kbps at power save mode "Super" when "LED" is set to "Off," "Equalizer," "Bass" are not in use. Actual battery life may vary based on usage patterns, environment and battery condition. 在节能模式设置为"Super(超级)"、"LED(发光二极管)"设置为"Off(关闭)"、"Equalizer(均衡器)"和"Bass(重低音)"均未启用的状态下, 以MP3 128kbps连续播放时, 电池的实际使用寿命可能会因使用方式、环境条件和电池本身的不同而异。

★ Availability is limited to model in stock. ★ For information about the prices of "Open Price" products, please contact your nearest Sony product retailer. ★ All insets contained here in are simulated pictures only. ★ 产品的供应因各型号产品库存情况而异。 ★ 如需了解关于"Open Price(价格未定)"产品的价格信息, 请就近向索尼产品零售商家联系咨询。 ★ 此处包含的所有插图均为模拟图片, 仅供参考。

Balanced Armature Headphones

平衡电枢耳机

Sony's BA Premium Headphones

索尼BA高品质耳机

Feature of Balanced Armature 平衡电枢功能

Compact Size Driver 精简尺寸驱动单元

Sony's Balanced Armature Drivers are 40% smaller than the traditional 9mm Dynamic Driver Units. This allows you to enjoy a lighter, more comfortable fit without compromising on high quality sound.

相对于传统的9mm动态驱动单元，索尼的平衡电枢驱动尺寸小40%。因而能够让您在不失高品质声音的同时获得重量更轻、佩戴更舒适的享受。



Noise Isolation 噪声隔离

The sealed housing structure of Sony Balanced Armature Headphones is designed to isolate noise and prevent sound leakage to and from your environment. So you'll be able to immerse yourself in your favourite tracks without any disturbance.

索尼平衡电枢耳机采用密封外壳结构设计，能够隔离外界环境噪声并防止声音向外环境泄露。因此您能够沉浸在自己喜欢的音乐中，而不会受到任何干扰。

Noise / Water 噪声 / 水

XBA-1(JE)
Open Price

- Single Balanced Armature Full Range
- Crystal Clear and Profound Vocal Sound
- 单平衡电枢全音域
- 透彻深厚的音质

Balanced Armature
BA Driver *1
MADE IN JAPAN

L shaped stereo mini plug

Full Range

XBA-2(JE)*2
Open Price

- Dual Balanced Armature Full Range + Woofer
- Powerful Bass with Crisp, Clear Vocals
- 双平衡电枢全音域+低音喇叭
- 强劲低音，清爽音质

Balanced Armature
BA Driver *1
MADE IN JAPAN

L shaped stereo mini plug

Full Range
Woofer

XBA-3(JE)*2
Open Price

- Triple Balanced Armature Full Range + Woofer + Tweeter
- Bright & Detailed High Frequency, Powerful Bass & Clear Vocal Sound
- 三平衡电枢全音域+低音喇叭+高音喇叭
- 鲜明且细节丰富的高频，强劲低音和清晰音质

Balanced Armature
BA Driver *1
MADE IN JAPAN

L shaped stereo mini plug

Full Range
Tweeter
Woofer

XBA-4(JE)*2
Open Price

- Quad Balanced Armature Full Range + Woofer + Tweeter + Super Woofer
- Rich Expression Across All Frequencies
- 四平衡电枢全音域+低音+高音+超低音
- 饱满的全频表现

Balanced Armature
BA Driver *1
MADE IN JAPAN

L shaped stereo mini plug

Woofer
Tweeter
Full Range
Super Woofer

XBA-S65(JE)
Open Price

- High Sound Transmission Waterproof Film
- Active Sports Style Washable and Tight Fit Designs
- 声音高穿透性防水膜
- 活力运动风格、可清洗的紧凑佩戴设计

Balanced Armature
BA Driver *1
MADE IN JAPAN

L shaped stereo mini plug

(B) Black (W) White

XBA-NC85D(JE)
Open Price

- World's Smallest and Lightest Digital Noise-Cancelling Headphones
- Revolutionary Control Box-free Design
- 全球最小最轻的数字降噪耳机
- 革命性的无控制盒设计

DIGITAL NC
Balanced Armature

Reduces up to 97.5%*3 Ambient noise
最高降低97.5%环境噪声

In-flight plug adaptor supplied

L shaped stereo mini plug

MADE IN JAPAN

Instruction Manual 使用说明书
XBA-1 / 2 / 3 / 4 / S65 / NC85D:
English / Chinese (Traditional Chinese) 中文 (繁体中文) / Korean

MDR-NC600D / NC300D / NC200D / NC100D / NC33 / NC8:
English / Japanese

Noise Canceling Headphones

降噪耳机



Greatly enhanced digital noise canceling capability
高效降噪功能

Reduces up to 99%*3 Ambient noise
最高降低99%环境噪声

MDR-NC600D(JE)
Open Price



Large 16mm driver units with digital equalizer and Full Digital Amplifier
16mm大驱动单元，带有数字均衡器和全数字放大器

Reduces up to 98.4%*3 Ambient noise
最高降低98.4%环境噪声

MDR-NC300D(JE)
Open Price



Large 40mm driver units, Full Digital Amplifier and Digital Equalizer with light weight design
40mm大驱动单元，全数字放大器和数字均衡器，轻便设计

Reduces up to 98.2%*3 Ambient noise
最高降低98.2%环境噪声

MDR-NC200D(JE)
Open Price

DIGITAL NC Sony World Model

In-flight plug adaptor supplied

L shaped stereo mini plug

13.5mm driver units and vertical in-the-ear design for greater comfort
13.5mm驱动单元，垂直入耳设计，更加舒适

(B) Black (L) Blue (T) Brown

Reduces up to 98.2%*3 Ambient noise
最高降低98.2%环境噪声

MDR-NC100D(JE)
Open Price

(W) White

DIGITAL NC Sony World Model

In-flight plug adaptor supplied

L shaped stereo mini plug

High sound quality and wearing comfort in three color variations
高音质，佩戴舒适，三种颜色可选

(B) Black (V) Violet (W) White

Reduces up to 90%*3 Ambient noise
最高降低90%环境噪声

MDR-NC33(JE)
Open Price

DIGITAL NC NOISE CANCELING Sony World Model

In-flight plug adaptor supplied

L shaped stereo mini plug

Easy to carry and store with two-way folding design
双向折叠设计，携带与存放极为方便

(B) Black (W) White

Reduces up to 90%*3 Ambient noise
最高降低90%环境噪声

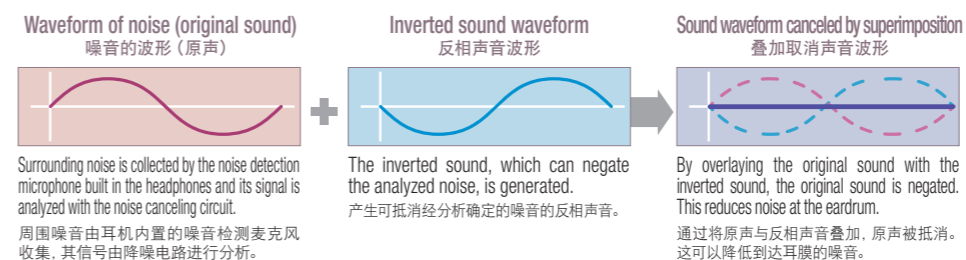
MDR-NC8(JE)
Open Price **Coming Soon**

DIGITAL NC NOISE CANCELING Sony World Model

In-flight plug adaptor supplied

L shaped stereo mini plug

Principle of operation of the noise canceling headphones 降噪耳机的工作原理



*1 Sony's Balanced Armature Driver is made in Japan. (Driver Only) *2 It cannot be used with the following products. WALKMAN: NWD-B100 Series, NWZ-B170 / B160 / B160F / B150 / B150F / B140 / B140F / B130 / B100 / B370 / E360 / E340 / E440 / E430 / S540 Series 无法搭配下列产品使用: WALKMAN:NWD-B100系列、NWZ-B170 / B160 / B160F / B150 / B150F / B140 / B140F / B130 / B100 / B370 / E360 / E340 / E440 / E430 / S540系列 *3 Under the Sony measurement standard. The noise canceling effect may not be pronounced in a very quiet environment, or some noise may be heard. Ambient noise is not reduced to zero. 根据索尼测试标准，在非常安静的环境中，降噪功能的效果也许并不显著，或者有可能会听到某些噪音。环境噪音不会被降低至零。 *4 Extension cord 延长线

★For information about the prices of "Open Price" products, please contact your nearest Sony product retailer.
★如需了解关于"Open Price(价格未定)"产品的价格信息，请就近向索尼产品零售商联系咨询。



Inner Ear

入耳式

MDR-EX10LP(JE)
Open Price

- Choose from 14 colors to suit your personal music player and your fashion sense
- 14种颜色任选, 搭配您的个性音乐播放器, 满足您的时尚品味

Colors: (PV) Pink Violet, (B) Black, (W) White, (H) Gray, (P) Hot Pink, (G) Green, (L) Cobalt Blue, (V) Violet, (R) Red, (D) Orange, (Y) Yellow, (P) Pale Pink, (L) Blue Yellow, (L) Turquoise Blue, (G) Mint Green, (L) Soda Blue, (V) Grape Violet.

MDR-EX20LP(JE)
Open Price

- Fun and cool colors, ensuring good sound quality
- 酷而有趣的颜色, 确保优良音质

Colors: (PJ) Cassis Pink, (PI) Cherry Pink, (P) Peach Pink, (R) Raspberry Red, (DI) Apricot Orange, (D) Mango Orange, (Y) Lemon Yellow, (W) Milk White, (G) Muscat Green, (GI) Mint Green, (L) Soda Blue, (V) Grape Violet.

MDR-EX37B(JE)
Open Price

- High quality 9mm driver units provide dynamic audio performance
- 高品质9mm驱动单元展现动态音频性能

Colors: (B) Black, (R) Red, (L) Blue, (Y) Yellow.

MDR-EX100LP(JE)
Open Price **NEW**

- Enjoy, high-resolution treble and midrange with powerful bass sound
- 欣赏高分辨率的高音和中音以及强劲的低音

Colors: (B) Black, (G) Green, (Y) Yellow, (W) White, (P) Pink, (L) Turquoise Blue, (G) Lime, (D) Orange.

MDR-EX220LP(JE)
Open Price **NEW**

- Capable of producing premium sound quality with 13.5mm high-sensitivity driver units
- 能够凭借13.5mm高灵敏度驱动单元产生高品质声音

Colors: (R) Red, (B) Black, (P) Pink, (L) Blue, (W) White.

Head Band

头戴式

MDR-XB400(JE)
Open Price **Coming Soon**

- Powerful bass sound is realized through 30mm XB(Extra Bass) driver units
- Tightly sealed acoustic design for a high level of sound isolation & bass sounds
- Ultra-thick pressure-relieving earpads cushion your ears for unbeatable comfort
- 通过30mm XB(超强重低音)驱动单元实现强劲低音
- 密封的声学设计实现高度声音隔离和低沉的低音
- 超厚减压耳垫, 佩戴无比舒适

Colors: (B) Black, (W) White, (L) Blue, (R) Red, (G) Green, (P) Pink, (V) Violet.

MDR-ZX100(JE)
Open Price

- Closed-type 30mm driver units
- Slim, folding design for easy portability
- 封闭式30mm驱动单元
- 易于携带的纤细型折叠设计

Colors: (B) Black, (W) White, (P) Pink, (R) Red.

MDR-ZX300(JE)
Open Price

- Closed-type 30mm driver units
- Neodymium magnet*1 delivers powerful sound
- Slim, folding design for easy portability
- 封闭式30mm驱动单元
- 钕磁*1营造强劲声音
- 易于携带的纤细型折叠设计

Colors: (B) Black, (L) Blue, (R) Red, (N) Gold.

Clip Style Headphones & Speaker

挂耳式耳机和扬声器

MDR-Q68LW(JE)
Open Price

- Just press a button to retract both neck and plug cords
- 仅需轻触一键, 即可收回颈链式耳机线和插头连线

Colors: (B) Black, (L) Blue, (W) White, (S) Silver.

SRS-TD60(JE)
Open Price

- Aluminum-cone satellite speakers for clear vocal midrange playback
- 铝质锥形卫星喇叭可提供清晰的中频声音再现

Color: (W) White.

Instruction Manual MDR-Q68LW: English / Chinese (Simplified Chinese / Traditional Chinese) / 中文(简体中文 / 繁体中文) / Korean

SRS-TD60: English / French / Spanish / Korean / Chinese (Simplified Chinese / Traditional Chinese) / 中文(简体中文 / 繁体中文)

Others: English / Chinese (Traditional Chinese) / 中文(繁体中文) / Korean

Head Set

耳麦式

DR-EX12IP(JE)
For iPod / iPhone / iPad
Open Price **NEW**

Colors: (B) Black, (L) Turquoise Blue, (PI) Hot Pink, (R) Red, (V) Violet, (W) White.

- In-line microphone with volume control for hands-free phone calls
- 带有音量控制的线控麦克风, 适合免提通话

Remote control / Microphone
遥控器和麦克风部分

DR-EX12IP

- Volume control (+/- buttons)
- Call / End call
- Play music
- 音量控制(+/-按钮)
- 接听/结束通话
- 播放音乐

DR-EX14VP

- Volume control
- Call / End call
- 音量控制
- 接听/结束通话

PC Headset DR-EX13DPV(JE)
Open Price **NEW**

- For Skype™, Windows Live™ Messenger, MSN™ Messenger, Yahoo!Messenger™, Google Talk™
- 适用于Skype™, Windows Live™ Messenger, MSN™ Messenger, Yahoo!Messenger™, Google Talk™

Colors: (B) Black, (W) White.

Active Style Headphones [Designed for workouts]

运动式耳机 [专为体育锻炼而设计]

MDR-AS51G(JE)
Open Price

- Lightweight, soft neck band design
- 重量极轻的软颈带式设计

Colors: (B) Black, (P) Pink, (Y) Yellow.

MDR-AS21J(JE)
Open Price

- The vertical and soft loop-hangers are great for intense workouts
- 直立的软环挂架非常适合于从事较为激烈的活动

Colors: (B) Black, (P) Pink, (Y) Yellow.

MDR-AS41EX(JE)
Open Price

- Recommended for fast movement and high-impact workouts
- 建议用于快速运动或高冲击性活动中

Colors: (B) Black, (L) Blue, (P) Pink, (Y) Yellow.

IC Recorder | 数码录音棒

IC RECORDER

ICD-SX713(JE)
4GB Internal Memory
Open Price

- CD Quality Recording for Business and Live Music recording High Quality microphone capture voice clearly at distance recording
- CD品质录音, 适合商务会议和现场音乐录音
- 高品质麦克风捕捉清晰人声, 适合远距离录音

for Windows® 7 / Vista / XP for Macintosh® 10.2.8 or later

LinearPCM MP3 S-MiC RECORDING SYSTEM

ICD-TX50(JE)
4GB Internal Memory
Open Price

- Easy to read Bright Organic EL Display
- Stylish Thin & Clip Style Design
- Easy Recording Setting with Scene Select Function
- 易于阅读的明亮有机EL显示屏
- 时尚轻薄的背夹式设计
- 简易录制设定, 具备场景选择功能

for Windows® 7 / Vista / XP for Macintosh® 10.3.9 or later

LinearPCM MP3 S-MiC RECORDING SYSTEM

ICD-BX112(JE)
2GB Internal Memory
Open Price

- Easy to use IC recorder with 2GB internal memory for extended recording
- 易用型数码录音棒, 2GB内存容量, 适合长时间录音

MP3

ICD-UX523F(JE)
4GB Internal Memory
Open Price

- All-in-1 Recording with Direct USB
- Capable of Linear PCM recording
- Built-in FM tuner
- 采用直连USB的一体化录制
- 具有线性PCM录音功能
- 内置FM调频

for Windows® 7 / Vista / XP for Macintosh® 10.3.9 or later

LinearPCM MP3 S-MiC RECORDING SYSTEM

Multilingual Menu Display ICD-SX713 / TX50 / UX523F: English / Chinese (Simplified Chinese / Traditional Chinese) / 中文(简体中文 / 繁体中文) / French / German / Italian / Japanese / Korean / Russian / Spanish / Thai

Instruction Manual ICD-SX713: English / Chinese (Simplified Chinese / Traditional Chinese) / 中文(简体中文 / 繁体中文) / Korean / Spanish

ICD-BX112: English ICD-UX523F: English / Chinese (Simplified Chinese / Traditional Chinese) / 中文(简体中文 / 繁体中文) / Korean / Spanish / Arabic / Persian

*1 Neodymium magnet: Reproduces deeper bass and clearer treble sound 钕磁: 再现下潜更深的低音和更清澈的高音 *2 Conversion cord 转换线 *3 Extension cord 延长线

※ Please refer to page 43 for rec time. 关于拍摄时间, 请参阅第43页。
★ Availability is limited to model in stock. ★ For information about the prices of "Open Price" products, please contact your nearest Sony product retailer.
★ 产品的供应因各型号产品库存情况而异。★ 如需了解关于"Open Price(价格未定)"产品的价格信息, 请就近向索尼产品零售商家咨询。

Digital Camcorder Specifications | 数码摄像机规格

| Model Name 机型名称 | HDR-PJ760E(JE) P6 | HDR-PJ720E(JE) P7 | HDR-PJ600E(JE) P8 | HDR-PJ580E(JE) P8 | HDR-PJ260E(JE) P9 | HDR-PJ200(JE) HDR-PJ200E(JE) P9 | HDR-TD20E(JE) P10 | HDR-GW77E(JE) P12 | |
|---|---|---|---|---|--|--|---|---|--|
| High-Definition [1920 x 1080] | | | | | | | | | |
| Image Sensor (Approx.) 影像传感器 (约) | 1/2.88 Type "Exmor R" CMOS Sensor | 1/2.88 Type "Exmor R" CMOS Sensor | 1/3.91 Type "Exmor R" CMOS Sensor | 1/3.91 Type "Exmor R" CMOS Sensor | 1/3.91 Type "Exmor R" CMOS Sensor | 1/5.8 Type "Exmor R" CMOS Sensor | 2x 1/3.91 Type "Exmor R" CMOS Sensor | 1/3.91 Type "Exmor R" CMOS Sensor | |
| Number of pixels 像素数 | MAX. 24.1 Megapixels | MAX. 24.1 Megapixels | MAX. 20.4 Megapixels | MAX. 20.4 Megapixels | MAX. 8.9 Megapixels | MAX. 5.3 Megapixels | MAX. 20.4 Megapixels | MAX. 20.4 Megapixels | |
| Gross pixels (Approx.) 总像素 (约) | 6,650K pixels | 6,650K pixels | 5,430K pixels | 5,430K pixels | 5,430K pixels | 1,500K pixels | 2x 5,430K pixels (3D HD) / 5,430K pixels(2D) | 5,430K pixels | |
| Effective pixels of moving pictures (Approx.) 动态影像有效像素 (约) | 6,140K pixels (16:9) / 4,600K pixels (4:3) | 6,140K pixels (16:9) / 4,600K pixels (4:3) | 5,020K pixels (16:9) / 3,760K pixels (4:3) | 5,020K pixels(16:9) / 3,760K pixels (4:3) | 2,230K pixels (16:9) / 1,670K pixels (4:3) | 1,310K pixels (16:9) / 980K pixels (4:3) | 3D: 2x 3,980K pixels(16:9) / 2D: 5,020K pixels (16:9), 3,760K pixels (4:3) | 5,020K pixels(16:9) / 3,760K pixels (4:3) | |
| Effective pixels of still images (Approx.) 静态图像有效像素 (约) | 6,140K pixels (16:9) | 6,140K pixels (16:9) | 5,020K pixels (16:9) | 5,020K pixels (16:9) | 2,230K pixels (4:3) | 1,310K pixels (4:3) | 5,020K pixels (16:9) (2D) | 5,020K pixels (16:9) | |
| Lens 镜头 | Carl Zeiss Vario-Sonnar T* | Carl Zeiss Vario-Sonnar T* | "G Lens" | "G Lens" | "G Lens" | Carl Zeiss Vario-Tessar Lens | "G Lens" | "G Lens" | |
| Zoom 变焦 | Optical 10x (Digital 120x*1), Extended 17x | Optical 10x (Digital 120x*1), Extended 17x | Optical 12x (Digital 160x*1), Extended 20x | Optical 12x (Digital 160x*1), Extended 20x | Optical 30x (Digital 350x*1), Extended 55x | Optical 25x (Digital 300x*1), Extended 30x | Optical 10x (Digital 120x (2D only)*1), Extended 12x (3D) 17x (2D) | Optical 10x (Digital 120x*1), Extended 17x | |
| Focus System 对焦系统 | Auto / Manual (Touch Panel / Dial) | Auto / Manual (Touch Panel / Dial) | Auto / Manual (Touch Panel) | Auto / Manual (Touch Panel) | Auto / Manual (Touch Panel) | Auto / Manual (Touch Panel) | Auto / Manual (Touch Panel / Dial) | Auto / Manual (Touch Panel) | |
| F F | F1.8-3.4 | F1.8-3.4 | F1.8-3.4 | F1.8-3.4 | F1.8-3.4 | F1.8-3.2 | F1.8-3.4 | F1.8-3.4 | |
| f (Focal distance) f (焦距) | f=3.8-38.0mm | f=3.8-38.0mm | f=2.9-34.8mm | f=2.9-34.8mm | f=2-1.63.0mm | f=2-5-62.5mm | f=3-2-32.0mm | f=3-2-32.0mm | |
| f (35mm conversion) f (35mm转换) | f=26.0-260mm (16:9) / 31.8-318mm (4:3) | f=26.0-260mm (16:9) / 31.8-318mm (4:3) | f=26.8-321.6mm (16:9) / 32.8-393.6mm (4:3) | f=26.8-321.6mm (16:9) / 32.8-393.6mm (4:3) | f=29.8-894mm (16:9) / 36.5-1,095mm (4:3) | f=36-1,080mm (16:9) / 44-1,320mm (4:3) | 3D: 33.4-400.8mm (16:9) / 2D: 29.8-298mm (16:9) / 36.3-363mm (4:3) | f=29.8-298mm (16:9) / 36.3-363mm (4:3) | |
| Filter Diameter 滤镜直径 | 52mm | 52mm | 30mm | 30mm | 37mm | — | — | — | |
| Viewfinder/Monitor 取景器/显示屏 | Viewfinder 取景器 | — | — | — | — | — | — | — | |
| LCD Screen 液晶屏 | 3.0 type (16:9) 921K dots (TruBlack) | 3.0 type (16:9) 921K dots (TruBlack) | 3.0 type (16:9) 921K dots (TruBlack) | 3.0 type (16:9) 921K dots (TruBlack) | 3.0 type (16:9) 230K dots | 2.7 type (16:9) 230K dots | 3.5 type (16:9) 1,229K dots 3D display (TruBlack) | 3.0 type (16:9) 921K dots | |
| Projector 投影机 | Light Output 光输出 | Up to 20 lumen | Up to 13 lumen | Up to 13 lumen | Up to 13 lumen | Up to 10 lumen | — | — | |
| Camera 相机 | Minimum Illumination (without Nightshot) 最低亮度 (不含夜视) | STD: 6lux*2 / LOW: 3lux*3 / Nightshot: 0lux*2 | STD: 6lux*2 / LOW: 3lux*3 / Nightshot: 0lux*2 | STD: 6lux*2 / LOW: 3lux*3 | STD: 6lux*2 / LOW: 3lux*3 | STD: 6lux*2 / LOW: 3lux*3 | STD: 11lux*2 / LOW: 3lux*3 | STD: 6lux*2 / LOW: 3lux*3 | |
| SteadyShot 防抖功能 | Balanced Optical SteadyShot (Active mode)*4 | Balanced Optical SteadyShot (Active mode)*4 | Optical SteadyShot (Active mode)*4 | Optical SteadyShot (Active mode)*4 | Optical SteadyShot (Active mode)*4 | Electrical SteadyShot (Active mode) | Optical SteadyShot (Active mode)*4 | Optical SteadyShot (Active mode)*4 | |
| Recorder / Player 录像机/播放机 | Recording Media 录制媒体 | Internal Memory / "Memory Stick PRO Duo" (Mark2) / "Memory Stick PRO-HG Duo" / SD / SDHC / SDXC Memory Card*5 | Internal Memory / "Memory Stick PRO Duo" (Mark2) / "Memory Stick PRO-HG Duo" / SD / SDHC / SDXC Memory Card*5 | Internal HDD / "Memory Stick PRO Duo" (Mark2) / "Memory Stick PRO-HG Duo" / SD / SDHC / SDXC Memory Card*5 | Internal Memory / "Memory Stick PRO Duo" (Mark2) / "Memory Stick PRO-HG Duo" / SD / SDHC / SDXC Memory Card*5 | Internal Memory / "Memory Stick PRO Duo" (Mark2) / "Memory Stick PRO-HG Duo" / SD / SDHC / SDXC Memory Card*5 | Internal Memory / "Memory Stick PRO Duo" (Mark2) / "Memory Stick PRO-HG Duo" / SD / SDHC / SDXC Memory Card*5 | Internal Memory / "Memory Stick PRO Duo" (Mark2) / "Memory Stick PRO-HG Duo" / SD / SDHC / SDXC Memory Card*5 | |
| Internal Media 内置媒体 | Flash Memory 96GB | Flash Memory 64GB | HDD 220GB (HDD Smart Protection) | Flash Memory 32GB | Flash Memory 16GB | — | Flash Memory 64GB | Flash Memory 16GB | |
| Movie Recording Format 动态影像录制格式 | HD: MPEG4-AVC/H.264 SD: MPEG2-PS | HD: MPEG4-AVC/H.264 SD: MPEG2-PS | HD: MPEG4-AVC/H.264 SD: MPEG2-PS | HD: MPEG4-AVC/H.264 SD: MPEG2-PS | HD: MPEG4-AVC/H.264 SD: MPEG2-PS | HD: MPEG4-AVC/H.264 SD: MPEG2-PS | 3D HD: MPEG4-MVC/H.264 2D HD: MPEG4-AVC/H.264 SD: MPEG2-PS | HD: MPEG4-AVC/H.264 SD: MPEG2-PS | |
| Progressive Mode (HD) 逐行扫描模式 (HD) | 50p / 25p | 50p / 25p | 50p / 25p | 50p / 25p | 50p | — | 50p / 25p | 50p | |
| Audio Compression Format 音频压缩格式 | Dolby Digital 5.1ch / Dolby Digital 2ch | Dolby Digital 5.1ch / Dolby Digital 2ch | Dolby Digital 5.1ch / Dolby Digital 2ch | Dolby Digital 5.1ch / Dolby Digital 2ch | Dolby Digital 5.1ch / Dolby Digital 2ch | Dolby Digital 2ch | Dolby Digital 5.1ch / Dolby Digital 2ch | Dolby Digital 2ch | |
| Built-in Zoom Microphone 内置变焦麦克风 | ● | ● | ● | ● | ● | ● | ● | ● | |
| Speaker 扬声器 | Clear Phase Stereo Speaker | Clear Phase Stereo Speaker | Clear Phase Stereo Speaker | Clear Phase Stereo Speaker | Clear Phase Stereo Speaker | Monoral Speaker | Clear Phase Stereo Speaker | Monoral Speaker | |
| Auto Wind Noise Reduction 自动风噪减弱 | ● (Off / On) | ● (Off / On) | ● (Off / On) | ● (Off / On) | ● (Off / On) | — | ● (Off / On) | — | |
| Still Picture 静态图像 | Image Size (Approx.) 图像尺寸 (约) | Photo Mode 照片模式 | Photo Mode 照片模式 | Photo Mode 照片模式 | Photo Mode 照片模式 | Photo Mode 照片模式 | Photo Mode 照片模式 | Photo Mode 照片模式 | |
| Flash 闪光灯 | ● | ● | ● | ● | ● | — | ● | ● | |
| Jack 插孔 | A/V Remote Terminal A/V 遥控端子 | Video / Audio / Remote | Video / Audio / Remote | Video/Audio/Remote | Video / Audio / Remote | Video / Audio / Remote | Video / Audio / Remote | — | |
| Mic. Input 麦克风输入 | ● | ● | ● | ● | ● | — | ● | — | |
| Phone Jack 耳机插孔 | ● | ● | ● | ● | ● | — | ● | — | |
| USB Port USB端口 | ● (mini AB / Hi-Speed) | ● (mini AB / Hi-Speed) | ● (mini AB / Hi-Speed) | ● (mini AB / Hi-Speed) | ● (mini AB / Hi-Speed) | ● (mini AB / Hi-Speed) | ● (mini AB / Hi-Speed) | ● (micro B / USB2.0 Hi-Speed (mass-storage / MTP)) | |
| HDMI Terminal HDMI高清多媒体接口 | ● (mini) | ● (mini) | ● (mini) | ● (mini) | ● (mini) | ● (mini) | ● (mini) | ● (micro) | |
| Other 其他 | Active Interface Shoe 有源接口靴 | ● | ● | ● | — | — | ● | — | |
| Power Requirements 电源要求 | AC adaptor 8.4V / Battery 7.2V, 6.8V | AC adaptor 8.4V / Battery 7.2V, 6.8V | AC adaptor 8.4V / Battery 7.2V, 6.8V | AC adaptor 8.4V / Battery 7.2V, 6.8V | AC adaptor 8.4V / Battery 7.2V, 6.8V | AC adaptor 8.4V / Battery 7.2V, 6.8V | AC adaptor 8.4V / Battery 7.2V, 6.8V | AC adaptor 5.0V / Battery 3.6V | |
| Power Consumption (Recording mode / Recording media : Default Setting) (Approx.) 功耗 (录制模式/录制媒体: 默认设置) (约) | HD: 3.4W | HD: 3.4W | HD: 3.9W | HD: 3.1W | HD: 2.7W | HD: 2.1W | 3D HD: 5.1W / HD: 3.5W | HD: 2.3W | |
| Dimension (WxHxD) (Including Protrusions) (Approx.) 尺寸 (宽x高x深) (包括突出部位) (约) | 71.5 x 73.5 x 137.5mm | 71.5 x 72 x 124mm | 64 x 66 x 117.5mm | 58.5 x 64.5 x 116.5mm | 58.5 x 64.5 x 116.5mm | 58 x 56 x 106.5mm | 71.5 x 63.5 x 130.5mm | 32.2 x 105.5 x 70.2mm | |
| Mass (without Recording Media, Battery, etc.) (Approx.) 重量 (不含录制媒体、电池等) (约) | 575g | 560g | 400g | 340g | 320g | 210g | 450g | 188g | |
| Mass (with Supplied Battery) (Approx.) *6 重量 (含电池) (约) *6 | 675g (Supplied NP-FV50) | 665g (Supplied NP-FV50) | 480g (Supplied NP-FV50) | 420g (Supplied NP-FV50) | 370g (Supplied NP-FV50) | 252g (Supplied NP-FV30) | 545g (Supplied NP-FV70) | 220g (Supplied NP-BG1) | |
| Supplied Accessories 随机配件 | Rechargeable Battery Pack (NP-FV50), AC adaptor, Power Cord, HDMI (mini) Cable, A/V Connecting Cable, USB Connection Support Cable, Lens Hood, Step Down Ring, Remote Commander | Rechargeable Battery Pack (NP-FV50), AC adaptor, Power Cord, HDMI (mini) Cable, A/V Connecting Cable, USB Connection Support Cable, Lens Hood, Step Down Ring, Remote Commander | Rechargeable Battery Pack (NP-FV50), AC adaptor, Power Cord, HDMI (mini) Cable, A/V Connecting Cable, USB Connection Support Cable, Lens Hood, Remote Commander | Rechargeable Battery Pack (NP-FV50), AC adaptor, Power Cord, HDMI (mini) Cable, A/V Connecting Cable, USB Connection Support Cable, Lens Hood, Remote Commander | Rechargeable Battery Pack (NP-FV50), AC adaptor, Power Cord, HDMI (mini) Cable, A/V Connecting Cable, USB Connection Support Cable | Rechargeable Battery Pack (NP-FV30), AC adaptor, Power Cord, HDMI (mini) Cable, A/V Connecting Cable, USB Connection Support Cable | Rechargeable Battery Pack (NP-FV70), AC adaptor, Power Cord, HDMI (mini) Cable, A/V Connecting Cable, USB Connection Support Cable, USB Adaptor Cable, Remote Commander | Rechargeable Battery Pack (NP-BG1), AC adaptor, Power Cord, HDMI (micro) Cable, micro USB cable, Wrist Strap | |

*1 With optical zoom. 带光学变焦。 *2 1/60 Shutter Speed (NTSC), 1/50 Shutter Speed (PAL). 1/60 快门速度 (NTSC), 1/50 快门速度 (PAL)。 *3 1/30 Shutter Speed (NTSC), 1/25 Shutter Speed (PAL). 1/30 快门速度 (NTSC), 1/25 快门速度 (PAL)。

*4 Movie only. 仅限动态影像。 *5 Class 4 or higher. Class 4 或更高。 *6 Including a battery pack and media (if a lens hood is supplied, including it too). 包括电池和媒体 (如果附带镜头遮光罩, 则也包括)。

International shortwave broadcast receivable radio Specifications 可接收国际短波广播的收音机规格

Table with 5 columns: Model Name (机型名称), ICF-SW7600GR(JE) P27, ICF-SW35(JE) P27, ICF-SW22(JE) P27, ICF-SW11(JE) P27. Rows include Circuitry, Reception Frequency, Antenna, Synchronisation, SSB, Memories, Rec./out. Terminals, Ext. Antenna Terminal, Earphone Jack, Dimensions, Mass, Power Supply, Power Output, Speaker, and Supplied Accessories.

Shortwave Reception frequencies for each model 各个机型的短波接收频率

Table with 13 columns: Meter band (broadcasting band), 120m, 90m, 75m, 60m, 49m, 41m, 31m, 25m, 22m, 19m, 16m, 13m, 11m. Rows include Frequency (kHz), Principal stations, and specific model frequency ranges (ICF-SW7600GR(JE), ICF-SW35(JE), ICF-SW22(JE), ICF-SW11(JE)).

*1 The ICF-SW7600GR(JE) can also pick up many stations throughout the world, such as ones in China, that are not members of international agreements... *2 NHK Radio Japan is responsible for NHK broadcasts to countries overseas and can not be received within Japan.

IC Recorder Rec Time (Approx.) 数码录音棒录音时长 (约)

Table with 8 columns: Frequency / Bit rate (频率 / 比特率), LPCM 44.1kHz/16bit, MP3 320kbps, MP3 192kbps, MP3 160kbps (MONO), MP3 128kbps, MP3 48kbps (MONO), MP3 8kbps (MONO). Rows include ICD-SX713(JE), ICD-TX50(JE), ICD-UX523F(JE), and ICD-BX112(JE).

Walkman® Specifications MP3播放器规格

Large table with 10 columns: Model Name (机型名称), NWZ-A866(JE) P28, NWZ-A865(JE) P28, NWZ-S764(JE) P28, NWZ-S764BT(JE) P28, NWZ-E473(JE) P28, NWZ-E473K(JE) P28, NWZ-W262(JE) P29, NWZ-B172F(JE) P29. Rows include Capacity, Colors, Use, Audio Formats, Video Formats, Photo Format, Podcast, Display, FM Tuner, Casual Game, Dimensions, Mass, Supplied Accessories, Music Searching Methods, Music Play Mode, Photo Play Mode, Sound Effects, Power Source, USB-based Charging Time, Continuous Playback Time, 3minutes Charge, and System Requirements Computer.

*1 Copyright protected files cannot be played back. 不会播放受著作权保护的文件。 *2 Some WMV files can be played back only by transferring using Windows Media® Player. 某些WMV文件只能通过Windows Media® Player传送后才能播放。

approximated when "DSEE," "Clear Stereo," "Equalizer," "VPT," "Dynamic Normalizer," "DPC (speed control)," "Display Lyrics," "Karaoke/Language Study," "Battery Care" are deactivated, the Brightness of the Common Setting is set to "3", and "Screen Off Timer" is set to "30 seconds".

Striving to achieve a zero environmental footprint

Sony Road to Zero Environmental Plan

The zero in Road to Zero means a zero environmental footprint. This is the ultimate goal of our environmental plan, which inspires innovative thinking and technology. To put Sony firmly on the road to zero, environmental goals are based on these four perspectives.

Promoting biodiversity

Respecting the natural environment

Controlling chemical substances

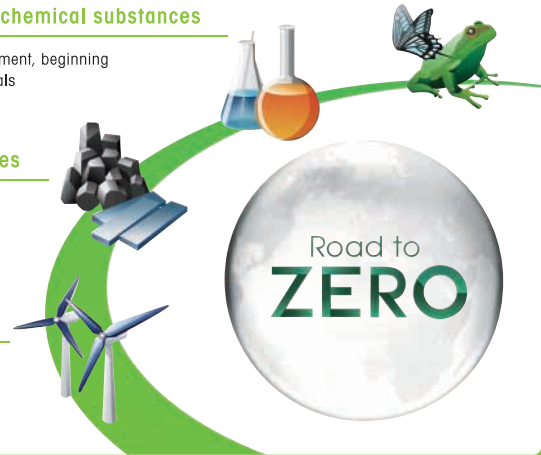
Careful management, beginning with raw materials

Conserving resources

Eliminating use of virgin materials

Curbing climate change

Toward zero-emission products



Visit Sony Overseas Models Website 访问索尼海外规格产品网站

sony.jp/overseas/

Please access to Sony Overseas Models website for product information, shop locations, and support & service for products purchased.

如需了解更多产品信息、商铺位置以及所购产品的技术支持与服务，请浏览索尼海外规格产品网站。



Note: Screens shown in this illustration are as of July 2012

Safety Cautions 安全注意事项

To ensure correct use of this product, read the "Instruction Manual" prior to use. Failure to follow all safeguards can result in fire, electric shock, or other accidents. Do not use headphones while driving and cycling, etc.

为确保正确使用本产品，使用前请仔细阅读“使用说明书”。如果未能遵守所有安全防护事项，可能会导致火灾、电击或其他事故的发生。在从事车辆驾驶或骑自行车等活动时，请勿使用耳机。

● **Sony Corporation**
Sony Marketing (Japan) Inc.
 1-7-1 Konan Minato-ku, Tokyo, 108-0075 Japan

● **Sony Customer Information Center Japan**

◎ For information about how to purchase or use our products, and for other assistance, please call our Customer Hotline.

Free Dial 0120-777-886

(Toll-free number available only in Japan. Assistance available in Japanese language only.)

- Mobile/PHS phone callers please dial **0466-31-2546**
- Service available
 Mon. to Fri. 9:00-18:00
 Sat., Sun. and Holidays ... 9:00-17:00

● **Showroom 样品陈列室**
 Tokyo: Sony Bldg., 3-1 Ginza 5-chome, Chuo-ku, (03)3573-2563
 东京都：中央区银座5丁目3-1 索尼大厦 (03)3573-2563

Come see the Showroom to find wide range of Sony products and selected items listed in this catalog.

You can experience leading technology and design, all in one place.

欢迎莅临索尼样品陈列室，包括本目录精选产品在内，您可浏览更多、更丰富的索尼产品。在这里，足不出户，即可体验当今世界上最先进的科技和设计理念。

- "SONY" and "make.believe" are trademarks of Sony Corporation.
- "Cyber-shot," **Cyber-shot**, **α**, "Handycam," **HANDYCAM**, "InfoLITHIUM," "ActiFORCE," **ActiFORCE**, "Walkman," **WALKMAN**, **W**, are registered trademarks of Sony Corporation.
- "G Lens," **G**, "Exmor," "Exmor R," "BIONZ," "Memory Stick," "Memory Stick Duo," "Memory Stick PRO," "Memory Stick PRO Duo," "Memory Stick PRO-HG Duo," "Memory Stick Micro," **MEMORYSTICK**, **MEMORY STICK DUO**, **MEMORY STICK PRO**, **MEMORY STICK PRO DUO**, "Memory Stick PRO-HG Duo," "MagicGate" and **MAGICGATE** are trademarks of Sony Corporation.
- "AVCHD" and **AVCHD** are trademarks of Panasonic Corporation and Sony Corporation.
- HDMI, **HDMI** and High-Definition Multimedia Interface are trademarks or registered trademarks of HDMI Licensing LLC.
- Microsoft, Windows, Windows Vista, Windows Media are trademarks or registered trademarks of Microsoft Corporation.
- Macintosh, Mac OS, the Mac OS logo, iMac, iBook, PowerBook, Power Mac and eMac are trademarks or registered trademarks of Apple Inc.
- The Bluetooth word mark, figure mark, and combination mark are all trademarks that are owned by the Bluetooth SIG and licensed out for use to companies that are incorporating Bluetooth wireless technology into their products.
- SD and SDHC Logo are trademarks of SD-3C, LLC.
- All other product and company names are trademarks or registered trademarks of their respective companies.
- Availability is limited to model in stock. 产品的供应因各型号产品库存情况而异。
- Design and specifications are subject to change without notice. 产品设计及参数可能会发生变更，恕不事先通知。
- M.S.R.P.: Manufacture's Suggested Retail Price. M.S.R.P.: 制造商建议零售价。
- For more information on the products listed in this catalog, see the catalogs of the individual products or ask a retailer. 关于此综合目录中产品的详情，请参考每个品目的产品目录，或与销售店联系咨询。

Contents of this catalog are valid as of August 2012

Sony Showroom

Sony Building / Sukiyabashi,
 Ginza, Chuo-ku, Tokyo
 URL: sonybuilding.jp/e/

