

Masdevallia amanda

RCHB.F. & WARSZ.
BONPLANDIA 2: 115, 1854

Synonyms: *Spilotantha amanda* (Rchb.f. & Warsz.) Luer, Monogr. Syst. Bot. Missouri Bot. Gard. 105: 15. 2006.

Type: Ecuador (holotype, W).

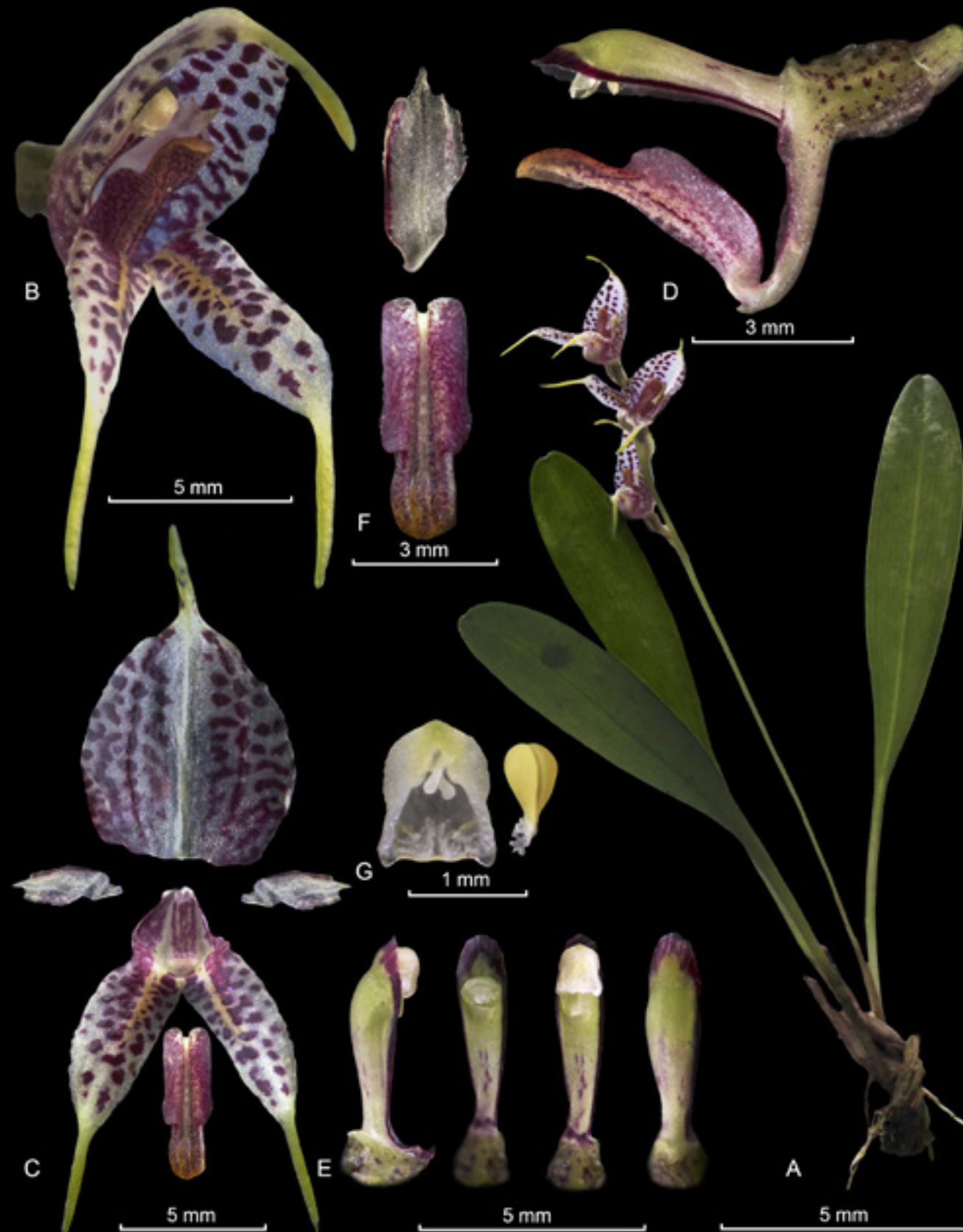
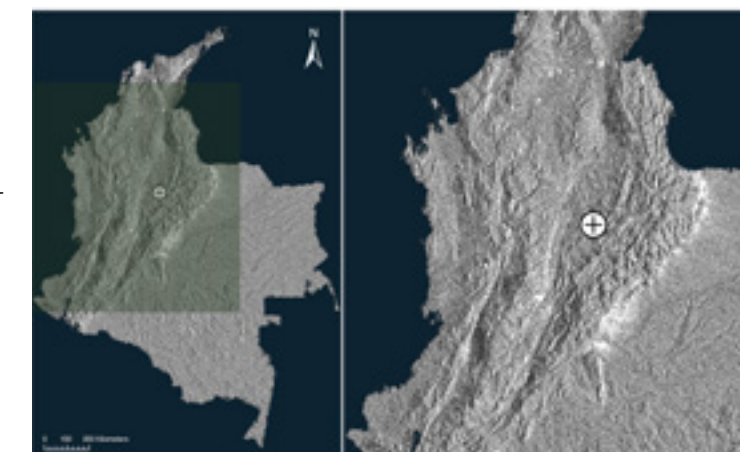
Illustrated specimen: Colombia, Santander, Provincia de Vélez, Municipio de La Belleza, Vereda Vista Hermosa, edge of the forest, 2570 m, mountain pluvial forest, 18 Jul. 2016, N. Gutiérrez M. 018 (JBB; LCDP voucher).

Plant epiphytic to terrestrial, caespitose, 9.8 cm tall. *Roots* flexuous, 1 mm in diameter. *Ramicauls* erect, up to 9 mm long, enclosed by 2–3 thin tubular sheaths. *Leaves* erect, thinly coriaceous, petiolate, the blade elliptical, subacute to obtuse, lamina 6.4–7.0 cm long including the petiole, 9.2–10.4 mm wide. *Inflorescence* a loosely few-flowered, erect to suberect raceme of 3 simultaneous flowers, 9.8 cm long including the peduncle. *Peduncle* erect, green, up to 8.6 cm long, with 2 tubular bracts, one near to the base and the other at the base. *Floral bract* inflated, 4 mm long. *Pedicel* 1.8–2.4 mm long. *Ovary* green with purple spots, 2.4 mm long, with 3 undulating crests. *Dorsal sepal* white, suffused with pale yellow above the middle, striped-spotted with purple, ovate, concave, glabrous, lamina 7.8 × 6.8 mm, connate to the lateral sepals for about 2.4 mm, to form a shallow, gaping cup, the rounded apex contracted into a slender green-yellow tail 2.4 mm long. *Lateral sepals* pale yellow-green or whitish, with purple dots or bars arranged transversely, glabrous, oblong, lamina 6.9 × 2.6 mm, the oblique apices contracted into greenish tails similar to that of the dorsal sepal, 3.4 mm long. *Petals* translucent white, top margin purple and dotted with purple in the bottom margin, more or less oblong, 4.1 × 1.5 mm, the truncate apex apiculate, both margins denticulate above the middle, the labellar margin with a longitudinal callus. *Lip*, purple to dull orange at the apex, oblong-subpan-durate, with obtuse marginal folds above the middle, the epichile rounded, the hypochile oblong with the base truncate, cleft, hinged below; 4.5 × 1.6 mm. *Column* pale green with purple margins, semiterete, 4.5 × 1 mm, with an incurved foot 3.4 mm long. *Stigma* ventral. *Pollinia* yellow, two, ovoid. *Anther cap* cucullate, apical.

Masdevallia amanda are usually small, but depending upon the habitat, is variable in size and color of the flowers, and in the lengths of the inflorescences, from short to elongate. Impoverished plants may produce only one flower, very often, the racemes are loosely two to four flowered, but sometimes as many as seven or eight flowers are present. A delicate strap connects the base of the lip to the tip of the extension of the column-foot, or just under the tip of the extension as in subgenus *Meleagris*. Is relatively frequent in Ecuador, all three cordilleras of Colombia, westernmost Venezuela, and less frequent as far as southern Ecuador.

References:

Luer, C. A. 2003. Icones Pleurothallidarum 25. Systematics of *Masdevallia* part five. *Monographs in systematic botany from the Missouri Botanical Garden* 91, 1049–1293.



LCDP: *Masdevallia amanda* Rchb.f. & Warsz. A. Habit. B. Flower. C. Dissected perianth. D. Ovary with column and lip, E. Colum side, ventral and dorsal view. F. Lip and petal. G. Anther cap and pollinia.

