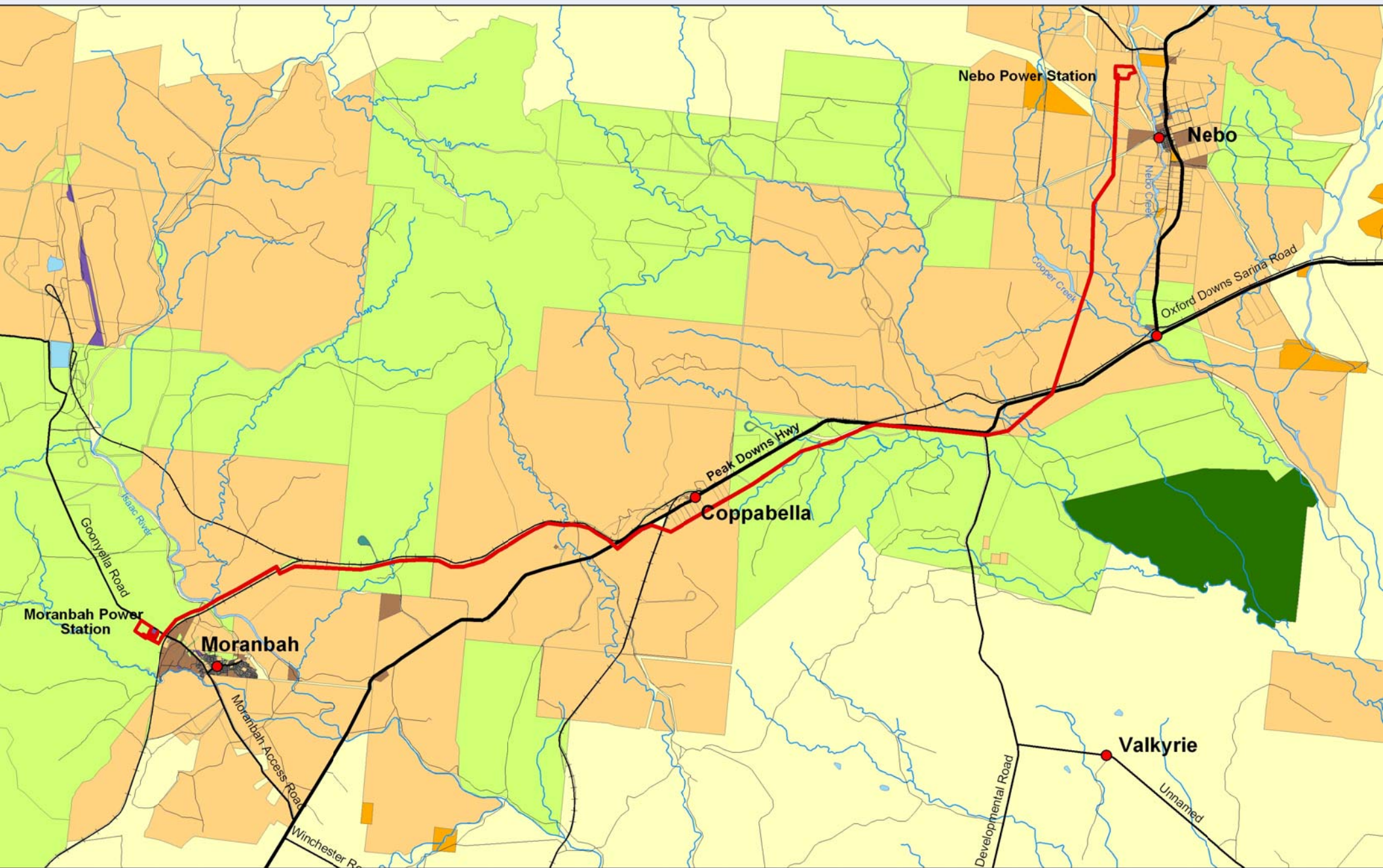


Appendix A Figures



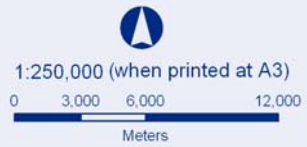
ab 2006

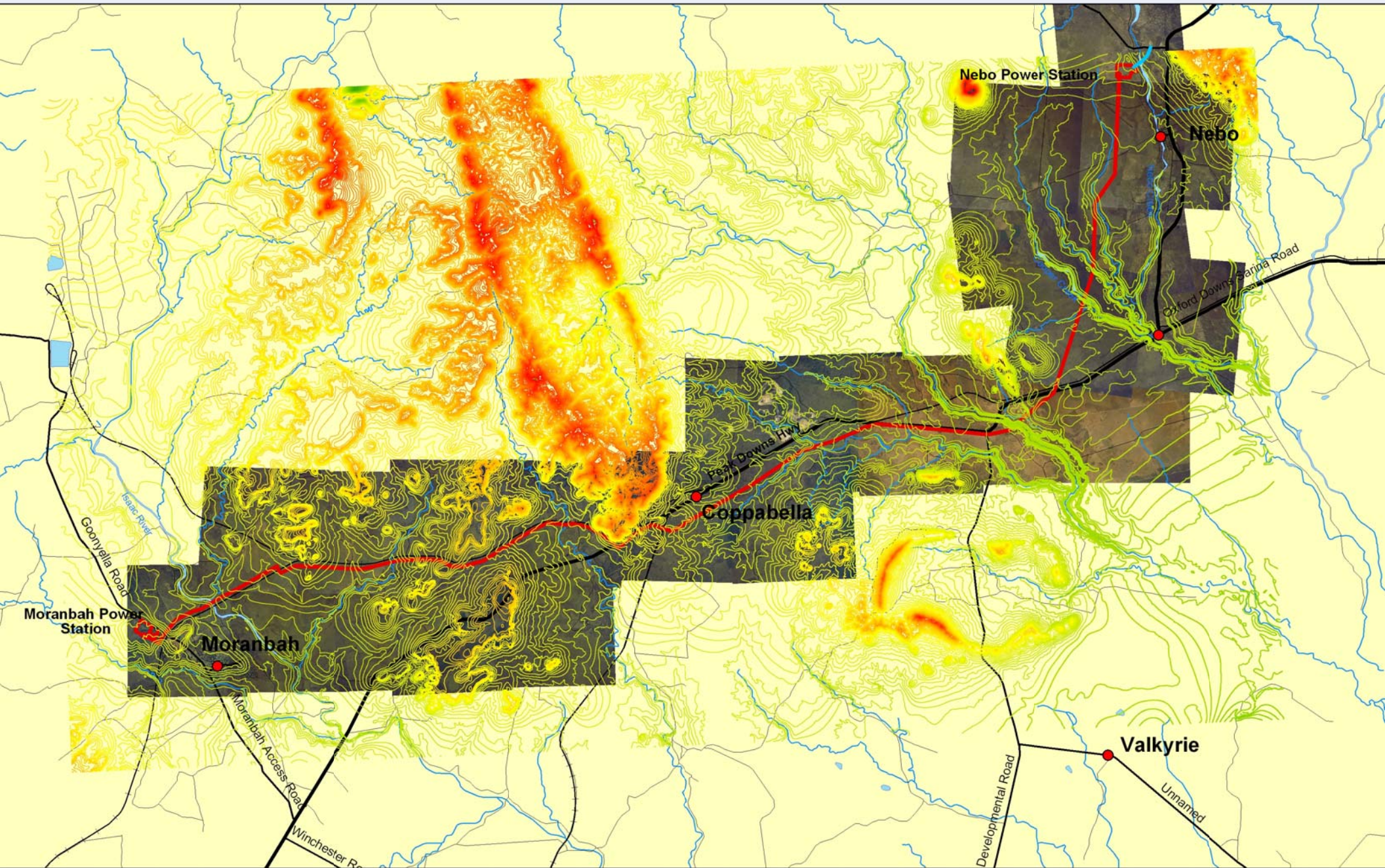
MGA94

Figure A1 Proposed Power Station and Pipeline Route

Data sources: Road Data - MapData Sciences 2005

- | | | | |
|----------------|---------------|---------------|------------|
| Towns | — Roads | Freehold | Reserve |
| Proposed Route | Waterways | Land Lease | Railway |
| Highways | Railways | National Park | State Land |
| Main Roads | State Forests | | |





ab 2006

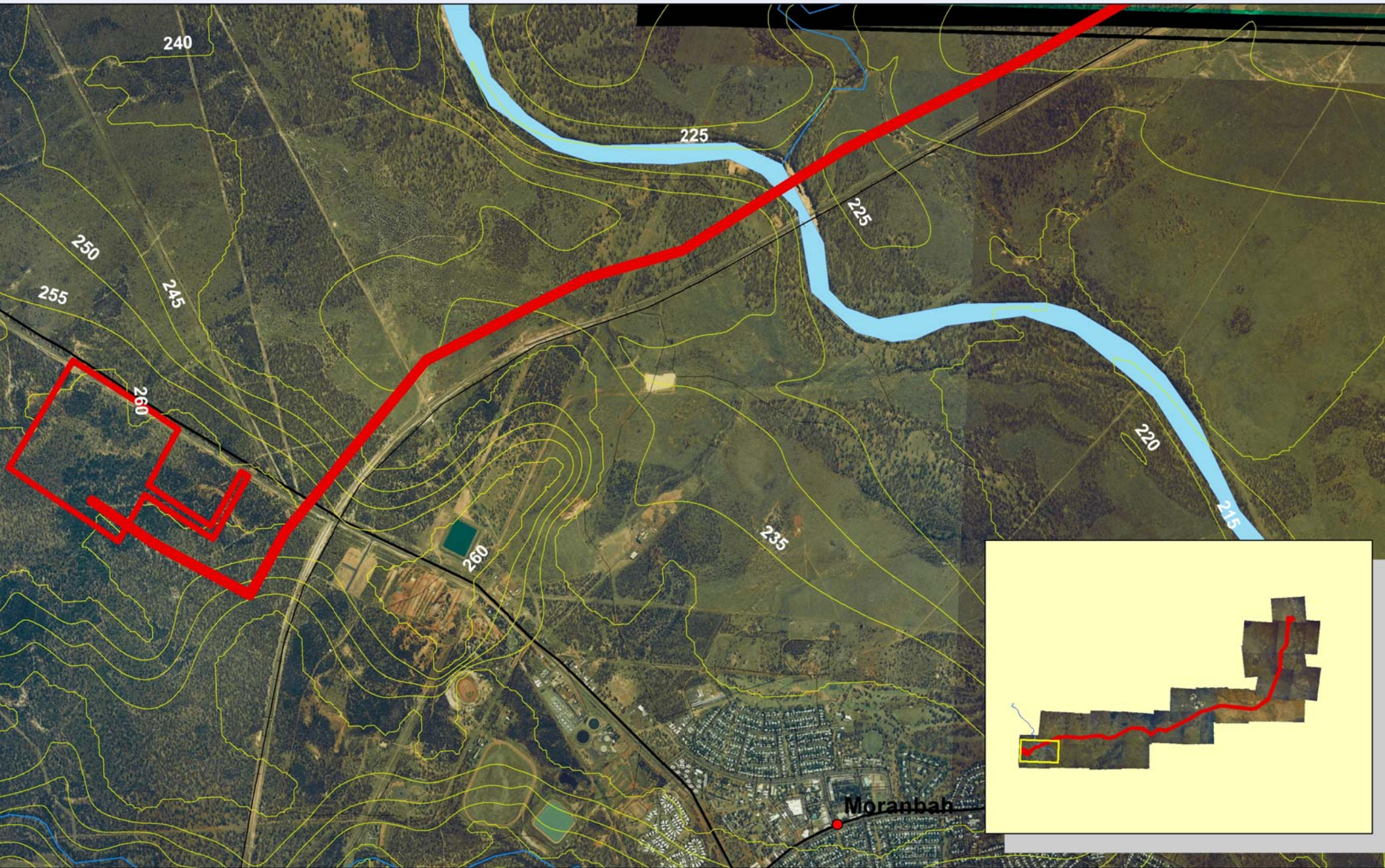
MGA94

Figure A2 Aerial Photographs and Topography

Data sources: Road Data - MapData Sciences 2005
Aerial Photo's - DNRM 28/06/2004

- Towns
- Nebo Site to Switch Yard Easement
- Proposed Route
- Highways
- Main Roads
- Roads
- Waterways
- Railways

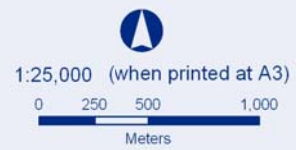




Feb 2006

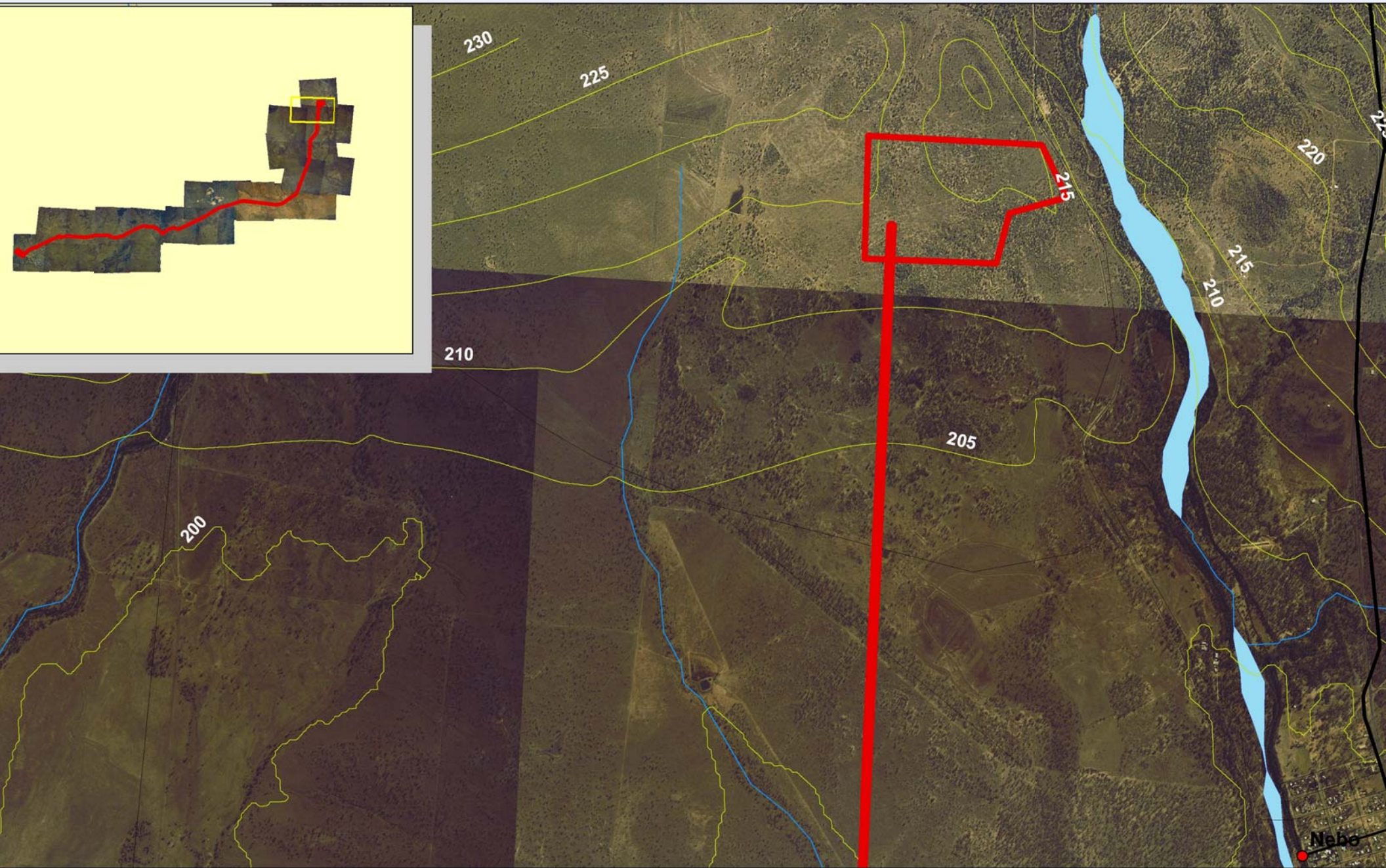
- Proposed Infrastructure
- ~ Waterways
- Towns
- +— Railways
- Highways
- Main Roads
- Roads

Figure A3 Moranbah Power Station



Data sources: Road Data - MapData Sciences 2005
Aerial Photo's - NRMW 28/06/2004

MGA94



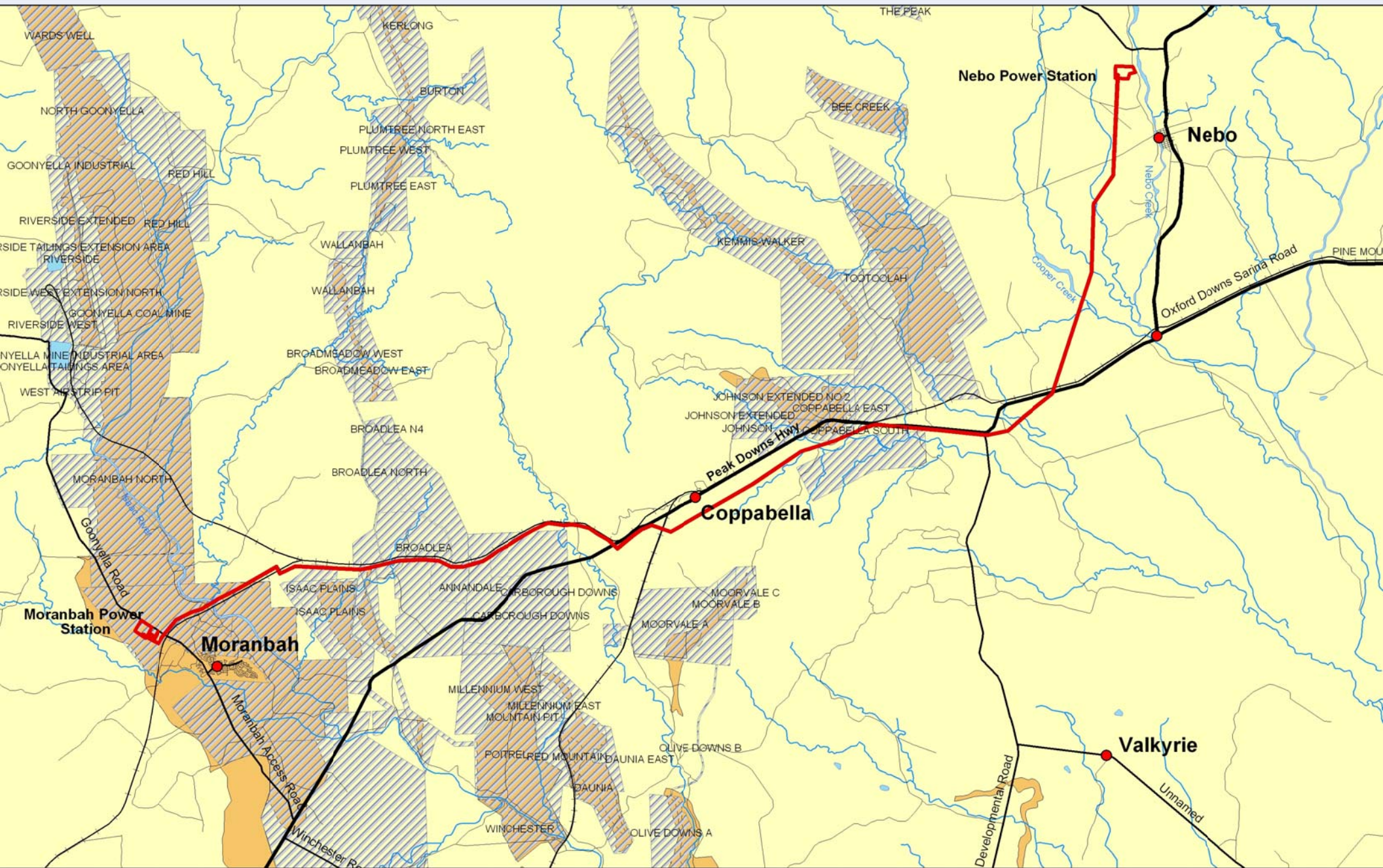
Feb 2006

- Proposed Infrastructure
- ~ Waterways
- Towns
- + + + Railways
- Highways
- Main Roads
- Roads

Figure A4 Nebo Power Station



Data sources: Road data - MapData Sciences 2005
Aerial Photo's - NRMW 28/06/2004



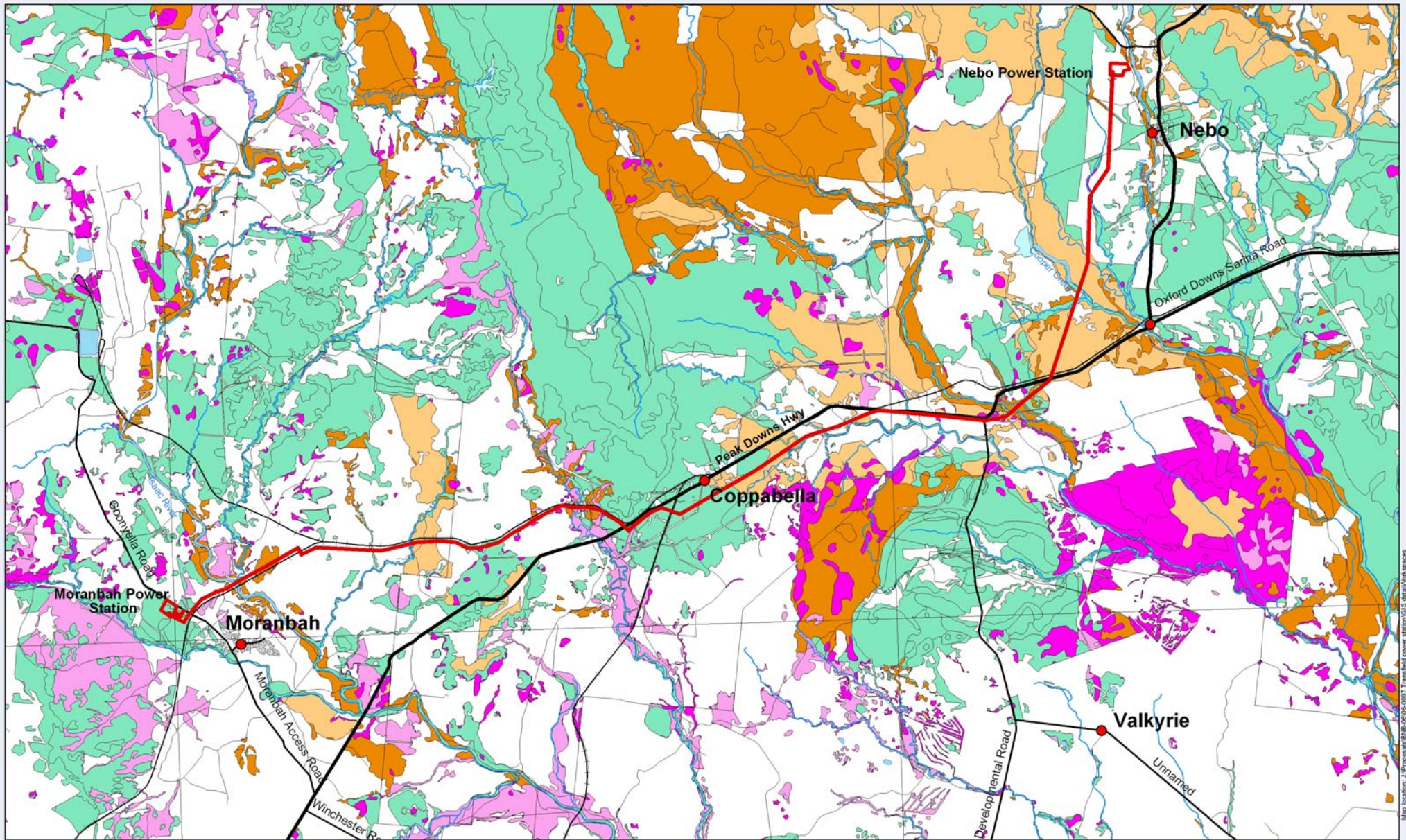
2006

- Towns
- Proposed Route
- Highways
- Main Roads
- Roads
- ~ Waterways
- Railways
- Mining Leases
- Coal Resource Areas

Figure A5 Mining Leases and Coal Resource Areas



Data sources: Road Data - MapData Sciences 2005
 Coal Resource Areas and Mining Leases - Interactive Re
 and Tenure Mapping QLD, NRMW 2006



17 Feb 2006

MGA94 Zone 55



Figure A6 Remnant Vegetation



Data sources: Road Data - MapData Sciences 2005
Regional Ecosystem Data V5 - EPA, November 2005

Map location: I:\Proposals\BIB-0506-0007_Transfield power station\GIS_data\Workspaces

Appendix B Database Searches



Queensland Government

Environmental Protection Agency Queensland Parks and Wildlife Service

Wildlife Online Extract

Search Criteria: Species List for a Defined Area

Species: All

Status: All

Date: All

Latitude: 21.5775 to 21.9047

Longitude: 148.595 to 148.7156

Email: bronwen.forsyth@maunsell.com

Date submitted: Monday 13 Feb 2006 12:04:54

Date extracted: Monday 13 Feb 2006 12:15:07

The number of records retrieved = 169

Kingdom	Class	Family	Scientific Name	Common Name	NCA	EPBC Recs
animals	amphibians	Hylidae	<i>Litoria inermis</i>	bumpy rocketfrog	C	1
animals	birds	Accipitridae	<i>Milvus migrans</i>	black kite	C	4
animals	birds	Accipitridae	<i>Haliastur sphenurus</i>	whistling kite	C	2
animals	birds	Anatidae	<i>Anas gracilis</i>	grey teal	C	1
animals	birds	Anatidae	<i>Anas superciliosa</i>	Pacific black duck	C	2
animals	birds	Anatidae	<i>Chenonetta jubata</i>	Australian wood duck	C	1
animals	birds	Anhingidae	<i>Anhinga melanogaster</i>	darther	C	1
animals	birds	Ardeidae	<i>Ardea alba</i>	great egret	C	1
animals	birds	Ardeidae	<i>Egretta novaehollandiae</i>	white-faced heron	C	3
animals	birds	Ardeidae	<i>Egretta garzetta</i>	little egret	C	1
animals	birds	Ardeidae	<i>Ardea ibis</i>	cattle egret	C	1
animals	birds	Artamidae	<i>Gymnorhina tibicen</i>	Australian magpie	C	5
animals	birds	Artamidae	<i>Strepera graculina</i>	pied currawong	C	1
animals	birds	Artamidae	<i>Artamus personatus</i>	masked woodswallow	C	1
animals	birds	Artamidae	<i>Artamus cinereus</i>	black-faced woodswallow	C	1
animals	birds	Artamidae	<i>Cracticus nigrogularis</i>	pied butcherbird	C	3
animals	birds	Cacatuidae	<i>Cacatua galerita</i>	sulphur-crested cockatoo	C	5
animals	birds	Cacatuidae	<i>Calyptorhynchus banksii</i>	red-tailed black-cockatoo	C	1
animals	birds	Cacatuidae	<i>Cacatua roseicapilla</i>	galah	C	3
animals	birds	Campephagidae	<i>Coracina papuensis</i>	white-bellied cuckoo-shrike	C	2
animals	birds	Campephagidae	<i>Coracina novaehollandiae</i>	black-faced cuckoo-shrike	C	4
animals	birds	Centropodidae	<i>Centropus phasianinus</i>	pheasant coucal	C	5
animals	birds	Climacteridae	<i>Climacteris picumnus</i>	brown treecreeper	C	1
animals	birds	Columbidae	<i>Geopelia striata</i>	peaceful dove	C	3
animals	birds	Columbidae	<i>Ocyphaps lophotes</i>	crested pigeon	C	2
animals	birds	Coraciidae	<i>Eurystomus orientalis</i>	dollarbird	C	1
animals	birds	Corcoracidae	<i>Struthidea cinerea</i>	apostlebird	C	3
animals	birds	Corvidae	<i>Corvus orru</i>	Torresian crow	C	7
animals	birds	Cuculidae	<i>Cuculus pallidus</i>	pallid cuckoo	C	1
animals	birds	Cuculidae	<i>Eudynamys scolopacea</i>	common koel	C	4
animals	birds	Cuculidae	<i>Cacomantis variolosus</i>	brush cuckoo	C	1
animals	birds	Cuculidae	<i>Scythrops novaehollandiae</i>	channel-billed cuckoo	C	2
animals	birds	Dicaeidae	<i>Dicaeum hirundinaceum</i>	mistletoebird	C	1
animals	birds	Dicruridae	<i>Myiagra rubecula</i>	leaden flycatcher	C	1
animals	birds	Dicruridae	<i>Dicrurus bracteatus</i>	spangled drongo	C	1
animals	birds	Dicruridae	<i>Grallina cyanoleuca</i>	magpie-lark	C	6
animals	birds	Dicruridae	<i>Rhipidura fuliginosa</i>	grey fantail	C	1
animals	birds	Dicruridae	<i>Rhipidura leucophrys</i>	willie wagtail	C	4
animals	birds	Gruidae	<i>Grus rubicunda</i>	brolga	C	3
animals	birds	Halcyonidae	<i>Dacelo leachii</i>	blue-winged kookaburra	C	3
animals	birds	Halcyonidae	<i>Todiramphus macleayii</i>	forest kingfisher	C	1
animals	birds	Halcyonidae	<i>Todiramphus sanctus</i>	sacred kingfisher	C	1
animals	birds	Halcyonidae	<i>Dacelo novaeguineae</i>	laughing kookaburra	C	6
animals	birds	Hirundinidae	<i>Hirundo nigricans</i>	tree martin	C	2
animals	birds	Maluridae	<i>Malurus melanocephalus</i>	red-backed fairy-wren	C	1

Kingdom	Class	Family	Scientific Name	Common Name	NCA	EPBC Recs
animals	birds	Meliphagidae	<i>Entomyzon cyanotis</i>	blue-faced honeyeater	C	. 5
animals	birds	Meliphagidae	<i>Lichmera indistincta</i>	brown honeyeater	C	. 6
animals	birds	Meliphagidae	<i>Philemon corniculatus</i>	noisy friarbird	C	. 5
animals	birds	Meliphagidae	<i>Melithreptus albogularis</i>	white-throated honeyeater	C	. 6
animals	birds	Meliphagidae	<i>Lichenostomus virescens</i>	singing honeyeater	C	. 1
animals	birds	Meliphagidae	<i>Philemon citreogularis</i>	little friarbird	C	. 1
animals	birds	Meliphagidae	<i>Manorina melanocephala</i>	noisy miner	C	. 1
animals	birds	Meliphagidae	<i>Melithreptus gularis</i>	black-chinned honeyeater	R	. 1
animals	birds	Meliphagidae	<i>Lichenostomus fuscus</i>	fuscous honeyeater	C	. 1
animals	birds	Meliphagidae	<i>Manorina flavigula</i>	yellow-throated miner	C	. 2
animals	birds	Meliphagidae	<i>Lichenostomus flavus</i>	yellow honeyeater	C	. 2
animals	birds	Meropidae	<i>Merops ornatus</i>	rainbow bee-eater	C	. 3
animals	birds	Neosittidae	<i>Daphoenositta chrysoptera</i>	varied sittella	C	. 1
animals	birds	Oriolidae	<i>Oriolus sagittatus</i>	olive-backed oriole	C	. 1
animals	birds	Oriolidae	<i>Sphecotheres viridis</i>	figbird	C	. 2
animals	birds	Pachycephalidae	<i>Colluricincla harmonica</i>	grey shrike-thrush	C	. 1
animals	birds	Pachycephalidae	<i>Pachycephala rufiventris</i>	rufous whistler	C	. 1
animals	birds	Pardalotidae	<i>Gerygone olivacea</i>	white-throated gerygone	C	. 2
animals	birds	Pardalotidae	<i>Pardalotus striatus</i>	striated pardalote	C	. 5
animals	birds	Pardalotidae	<i>Smicromnis brevirostris</i>	weebill	C	. 3
animals	birds	Passeridae	<i>Taeniopygia bichenovii</i>	double-barred finch	C	. 2
animals	birds	Petroicidae	<i>Microeca flavigaster</i>	lemon-bellied flycatcher	C	. 1
animals	birds	Phalacrocoracidae	<i>Phalacrocorax melanoleucos</i>	little pied cormorant	C	. 1
animals	birds	Pomatostomidae	<i>Pomatostomus temporalis</i>	grey-crowned babbler	C	. 2
animals	birds	Psittacidae	<i>Platycercus adscitus</i>	pale-headed rosella	C	. 5
animals	birds	Psittacidae	<i>Trichoglossus haematodus haematodus</i>	rainbow lorikeet	C	. 8
animals	birds	Psittacidae	<i>Trichoglossus chlorolepidotus</i>	scaly-breasted lorikeet	C	. 1
animals	birds	Psittacidae	<i>Aprosmictus erythropterus</i>	red-winged parrot	C	. 2
animals	birds	Ptilonorhynchidae	<i>Chlamydera nuchalis</i>	great bowerbird	C	. 1
animals	birds	Rallidae	<i>Gallinula tenebrosa</i>	dusky moorhen	C	. 1
animals	birds	Sylviidae	<i>Cincloramphus mathewsi</i>	rufous songlark	C	. 1
animals	birds	Threskiornithidae	<i>Threskiornis molucca</i>	Australian white ibis	C	. 1
animals	birds	Threskiornithidae	<i>Threskiornis spinicollis</i>	straw-necked ibis	C	. 1
animals	mammals	Dasyuridae	<i>Dasyurus hallucatus</i>	northern quoll	C	E 1
animals	mammals	Macropodidae	<i>Lagorchestes conspicillatus</i>	spectacled hare-wallaby	C	. 2
animals	mammals	Peramelidae	<i>Isoodon macrourus</i>	northern brown bandicoot	C	. 1
animals	mammals	Vespertilionidae	<i>Chalinolobus picatus</i>	little pied bat	R	. 1
animals	reptiles	Gekkonidae	<i>Oedura monilis</i>		C	. 1
animals	reptiles	Gekkonidae	<i>Gehyra catenata</i>		C	. 1
animals	reptiles	Gekkonidae	<i>Nephurus asper</i>	spiny knob-tailed gecko	C	. 2
animals	reptiles	Gekkonidae	<i>Diplodactylus vittatus</i>	wood gecko	C	. 1
animals	reptiles	Scincidae	<i>Ctenotus robustus</i>		C	. 1
animals	reptiles	Scincidae	<i>Egernia striolata</i>	tree skink	C	. 1
plants	higher dicots	Acanthaceae	<i>Rostellularia adscendens</i>		C	. 1
plants	higher dicots	Acanthaceae	<i>Hypoestes floribunda var. floribunda</i>		C	. 1

Kingdom	Class	Family	Scientific Name	Common Name	NCA	EPBC Recs
plants	higher dicots	Aizoaceae	<i>Zaleya galericulata</i>		C	. 1
plants	higher dicots	Apocynaceae	<i>Carissa ovata</i>	currantbush	C	. 1
plants	higher dicots	Apocynaceae	<i>Cascabela thevetia</i>	yellow oleander		. 1
plants	higher dicots	Asteraceae	<i>Pluchea dentex</i>	owl daisy	C	. 1
plants	higher dicots	Asteraceae	<i>Cirsium vulgare</i>	spear thistle		. 1
plants	higher dicots	Asteraceae	<i>Cotula australis</i>	common cotula	C	. 1
plants	higher dicots	Asteraceae	<i>Tridax procumbens</i>	tridax daisy		. 1
plants	higher dicots	Asteraceae	<i>Verbesina encelioides</i>	crownbeard		. 1
plants	higher dicots	Asteraceae	<i>Xanthium spinosum</i>	Bathurst burr		. 1
plants	higher dicots	Asteraceae	<i>Camptacra barbata</i>		C	. 1
plants	higher dicots	Bignoniaceae	<i>Tecoma stans</i>	tecoma		. 1
plants	higher dicots	Cactaceae	<i>Opuntia tomentosa</i>	velvety tree pear		. 1
plants	higher dicots	Caesalpiniaceae	<i>Lysiphyllum hookeri</i>	Queensland ebony	C	. 1
plants	higher dicots	Capparaceae	<i>Capparis lasiantha</i>	nipan	C	. 1
plants	higher dicots	Casuarinaceae	<i>Casuarina cristata</i>	belah	C	. 1
plants	higher dicots	Celastraceae	<i>Cassine australis var. angustifolia</i>		C	. 1
plants	higher dicots	Combretaceae	<i>Macropteranthes leichhardtii</i>	bonewood	C	. 1
plants	higher dicots	Convolvulaceae	<i>Merremia dissecta</i>			. 1
plants	higher dicots	Convolvulaceae	<i>Polymeria pusilla</i>		C	. 1
plants	higher dicots	Ebenaceae	<i>Diospyros humilis</i>	small-leaved ebony	C	. 1
plants	higher dicots	Euphorbiaceae	<i>Phyllanthus maderaspatensis</i>		C	. 1
plants	higher dicots	Euphorbiaceae	<i>Adriana urticoides var. urticoides</i>		C	. 1
plants	higher dicots	Euphorbiaceae	<i>Alchornea ilicifolia</i>	native holly	C	. 1
plants	higher dicots	Euphorbiaceae	<i>Acalypha eremorum</i>	soft acalypha	C	. 1
plants	higher dicots	Euphorbiaceae	<i>Chamaesyce hirta</i>	asthma plant		. 1
plants	higher dicots	Fabaceae	<i>Glycine tabacina</i>	glycine pea	C	. 1
plants	higher dicots	Fabaceae	<i>Crotalaria montana</i>		C	. 1
plants	higher dicots	Fabaceae	<i>Desmodium filiforme</i>		C	. 1
plants	higher dicots	Fabaceae	<i>Alysicarpus aurantiacus</i>		C	. 1
plants	higher dicots	Fabaceae	<i>Alysicarpus muelleri</i>		C	. 1
plants	higher dicots	Fabaceae	<i>Stylosanthes scabra</i>			. 1
plants	higher dicots	Fabaceae	<i>Desmodium muelleri</i>		C	. 4
plants	higher dicots	Fabaceae	<i>Vigna radiata var. sublobata</i>		C	. 1
plants	higher dicots	Fabaceae	<i>Galactia tenuiflora var. lucida</i>		C	. 2
plants	higher dicots	Lamiaceae	<i>Leucas lavandulifolia</i>			. 1
plants	higher dicots	Malvaceae	<i>Sida spinosa</i>	spiny sida		. 2
plants	higher dicots	Malvaceae	<i>Abutilon oxycarpum forma acutatum</i>		C	. 1
plants	higher dicots	Malvaceae	<i>Sida pleiantha</i>		C	. 2
plants	higher dicots	Mimosaceae	<i>Acacia harpophylla</i>	brigalow	C	. 1
plants	higher dicots	Myoporaceae	<i>Eremophila deserti</i>		C	. 1
plants	higher dicots	Myrtaceae	<i>Corymbia papuana</i>	ghost gum	C	. 1
plants	higher dicots	Myrtaceae	<i>Eucalyptus coolabah</i>	coolabah	C	. 1
plants	higher dicots	Myrtaceae	<i>Eucalyptus raveretiana</i>	black ironbox	V	V 4
plants	higher dicots	Nyctaginaceae	<i>Boerhavia schomburgkiana</i>		C	. 1
plants	higher dicots	Pittosporaceae	<i>Citriobatus spinescens</i>	wallaby apple	C	. 1

Kingdom	Class	Family	Scientific Name	Common Name	NCA	EPBC	Recs
plants	higher dicots	Rhamnaceae	<i>Ventilago viminalis</i>	supplejack	C	.	1
plants	higher dicots	Rubiaceae	<i>Canthium odoratum</i>		C	.	1
plants	higher dicots	Rutaceae	<i>Geijera salicifolia</i>	brush wilga	C	.	1
plants	higher dicots	Rutaceae	<i>Flindersia dissosperma</i>		C	.	1
plants	higher dicots	Sapindaceae	<i>Atalaya hemiglauca</i>		C	.	1
plants	higher dicots	Solanaceae	<i>Solanum torvum</i>	devil's fig		.	1
plants	higher dicots	Solanaceae	<i>Solanum parvifolium</i>		C	.	1
plants	higher dicots	Thymelaeaceae	<i>Thecanthes cornucopiae</i>		C	.	1
plants	monocots	Poaceae	<i>Eulalia aurea</i>	silky browntop	C	.	1
plants	monocots	Poaceae	<i>Panicum effusum</i>		C	.	1
plants	monocots	Poaceae	<i>Eriochloa crebra</i>	spring grass	C	.	2
plants	monocots	Poaceae	<i>Thellungia advena</i>	coolibah grass	C	.	1
plants	monocots	Poaceae	<i>Aristida leptopoda</i>	white speargrass	C	.	1
plants	monocots	Poaceae	<i>Aristida personata</i>		C	.	1
plants	monocots	Poaceae	<i>Digitaria bicornis</i>		C	.	1
plants	monocots	Poaceae	<i>Digitaria porrecta</i>		R	E	1
plants	monocots	Poaceae	<i>Eragrostis brownii</i>	Brown's lovegrass	C	.	1
plants	monocots	Poaceae	<i>Eragrostis sororia</i>		C	.	1
plants	monocots	Poaceae	<i>Aristida gracilipes</i>		C	.	1
plants	monocots	Poaceae	<i>Sporobolus fertilis</i>	giant Parramatta grass		.	2
plants	monocots	Poaceae	<i>Eragrostis tenellula</i>	delicate lovegrass	C	.	1
plants	monocots	Poaceae	<i>Iseilema vaginiflorum</i>	red flinders grass	C	.	2
plants	monocots	Poaceae	<i>Brachyachne convergens</i>	common native couch	C	.	1
plants	monocots	Poaceae	<i>Enneapogon intermedius</i>		C	.	2
plants	monocots	Poaceae	<i>Paspalidium globoideum</i>	sago grass	C	.	1
plants	monocots	Poaceae	<i>Eragrostis spartinoides</i>		C	.	2
plants	monocots	Poaceae	<i>Sporobolus jacquemontii</i>			.	1
plants	monocots	Poaceae	<i>Digitaria divaricatissima</i>	spreading umbrella grass	C	.	1
plants	monocots	Poaceae	<i>Hyparrhenia rufa subsp. rufa</i>			.	1
plants	monocots	Poaceae	<i>Aristida calycina var. calycina</i>		C	.	1
plants	monocots	Poaceae	<i>Setaria sphacelata var. sericea</i>			.	1
plants	monocots	Poaceae	<i>Dichanthium sericeum subsp. sericeum</i>		C	.	2
plants	monocots	Poaceae	<i>Bothriochloa decipiens var. decipiens</i>		C	.	1
plants	monocots	Poaceae	<i>Bothriochloa decipiens var. cloncurrans</i>		C	.	1

CODES

NCA - Indicates the conservation status of each taxon under the *Nature Conservation Act 1992*.

The codes are Presumed Extinct (PE), Endangered (E), Vulnerable (V), Rare (R), Common (C) or Not Protected ().

EPBC - Indicates the conservation status of each taxon under the *Environment Protection and Biodiversity Conservation Act 1999*.

The codes are Conservation Dependent (CD), Critically Endangered (CE), Endangered (E), Extinct (EX), Extinct in the Wild (XW) and Vulnerable (V).

Recs - Indicates the number of records of the species contained within the database for the area searched.



Queensland Government

Environmental Protection Agency Queensland Parks and Wildlife Service

Wildlife Online Extract

Search Criteria: Species List for a Defined Area

Species: All

Status: All

Date: All

Latitude: 21.5717 to 22.055

Longitude: 148.00 to 148.67

Email: bronwen.forsyth@maunsell.com

Date submitted: Monday 13 Feb 2006 11:50:11

Date extracted: Monday 13 Feb 2006 12:00:39

The number of records retrieved = 474

Kingdom	Class	Family	Scientific Name	Common Name	NCA	EPBC Recs
animals	amphibians	Hylidae	<i>Litoria rothii</i>	northern laughing treefrog	C	1
animals	amphibians	Hylidae	<i>Litoria inermis</i>	bumpy rocketfrog	C	2
animals	amphibians	Hylidae	<i>Litoria rubella</i>	ruddy treefrog	C	1
animals	amphibians	Hylidae	<i>Litoria latopalmata</i>	broad palmed rocketfrog	C	2
animals	amphibians	Hylidae	<i>Cyclorana novaehollandiae</i>	eastern snapping frog	C	1
animals	amphibians	Hylidae	<i>Cyclorana alboguttata</i>	greenstripe frog	C	1
animals	amphibians	Myobatrachidae	<i>Limnodynastes ornatus</i>	ornate burrowing frog	C	6
animals	birds	Accipitridae	<i>Aquila audax</i>	wedge-tailed eagle	C	4
animals	birds	Accipitridae	<i>Haliastur sphenurus</i>	whistling kite	C	4
animals	birds	Accipitridae	<i>Accipiter cirrhocephalus</i>	collared sparrowhawk	C	2
animals	birds	Accipitridae	<i>Hieraaetus morphnoides</i>	little eagle	C	1
animals	birds	Accipitridae	<i>Accipiter fasciatus</i>	brown goshawk	C	1
animals	birds	Accipitridae	<i>Milvus migrans</i>	black kite	C	3
animals	birds	Aegothelidae	<i>Aegotheles cristatus</i>	Australian owl-nightjar	C	1
animals	birds	Anatidae	<i>Anas gracilis</i>	grey teal	C	3
animals	birds	Anatidae	<i>Anas superciliosa</i>	Pacific black duck	C	6
animals	birds	Anatidae	<i>Dendrocygna eytoni</i>	plumed whistling-duck	C	2
animals	birds	Anatidae	<i>Chenonetta jubata</i>	Australian wood duck	C	4
animals	birds	Anatidae	<i>Aythya australis</i>	hardhead	C	1
animals	birds	Anhingidae	<i>Anhinga melanogaster</i>	darther	C	4
animals	birds	Ardeidae	<i>Ardea alba</i>	great egret	C	1
animals	birds	Ardeidae	<i>Ardea pacifica</i>	white-necked heron	C	1
animals	birds	Ardeidae	<i>Egretta novaehollandiae</i>	white-faced heron	C	3
animals	birds	Artamidae	<i>Artamus cinereus</i>	black-faced woodswallow	C	2
animals	birds	Artamidae	<i>Artamus leucorhynchus</i>	white-breasted woodswallow	C	3
animals	birds	Artamidae	<i>Cracticus nigrogularis</i>	pied butcherbird	C	14
animals	birds	Artamidae	<i>Cracticus torquatus</i>	grey butcherbird	C	8
animals	birds	Artamidae	<i>Gymnorhina tibicen</i>	Australian magpie	C	21
animals	birds	Artamidae	<i>Strepera graculina</i>	pied currawong	C	5
animals	birds	Burhinidae	<i>Burhinus grallarius</i>	bush stone-curlew	C	1
animals	birds	Cacatuidae	<i>Cacatua galerita</i>	sulphur-crested cockatoo	C	12
animals	birds	Cacatuidae	<i>Cacatua roseicapilla</i>	galah	C	10
animals	birds	Campephagidae	<i>Lalage sueurii</i>	white-winged triller	C	3
animals	birds	Campephagidae	<i>Coracina tenuirostris</i>	cidabird	C	3
animals	birds	Campephagidae	<i>Coracina novaehollandiae</i>	black-faced cuckoo-shrike	C	11
animals	birds	Campephagidae	<i>Coracina papuensis</i>	white-bellied cuckoo-shrike	C	1
animals	birds	Campephagidae	<i>Coracina maxima</i>	ground cuckoo-shrike	C	1
animals	birds	Caprimulgidae	<i>Eurostopodus mystacalis</i>	white-throated nightjar	C	1
animals	birds	Casuariidae	<i>Dromaius novaehollandiae</i>	emu	C	1
animals	birds	Centropodidae	<i>Centropus phasianinus</i>	pheasant coucal	C	5
animals	birds	Charadriidae	<i>Vanellus miles</i>	masked lapwing	C	1
animals	birds	Charadriidae	<i>Elseyornis melanops</i>	black-fronted dotterel	C	3
animals	birds	Charadriidae	<i>Vanellus miles miles</i>	masked lapwing (northern subspecies)	C	1
animals	birds	Ciconiidae	<i>Ephippiorhynchus asiaticus</i>	black-necked stork	R	2
animals	birds	Climacteridae	<i>Climacteris picumnus</i>	brown treecreeper	C	1

Kingdom	Class	Family	Scientific Name	Common Name	NCA	EPBC Recs
animals	birds	Columbidae	<i>Geopelia striata</i>	peaceful dove	C	9
animals	birds	Columbidae	<i>Ocyphaps lophotes</i>	crested pigeon	C	6
animals	birds	Columbidae	<i>Phaps chalcoptera</i>	common bronzewing	C	2
animals	birds	Columbidae	<i>Geopelia humeralis</i>	bar-shouldered dove	C	4
animals	birds	Columbidae	<i>Geophaps scripta scripta</i>	squatter pigeon (southern subspecies)	V	V
animals	birds	Columbidae	<i>Geophaps scripta</i>	squatter pigeon	C	1
animals	birds	Coraciidae	<i>Eurystomus orientalis</i>	dollarbird	C	4
animals	birds	Corcoracidae	<i>Struthidea cinerea</i>	apostlebird	C	12
animals	birds	Corcoracidae	<i>Corcorax melanorhamphos</i>	white-winged chough	C	1
animals	birds	Corvidae	<i>Corvus orru</i>	Torresian crow	C	27
animals	birds	Corvidae	<i>Corvus bennetti</i>	little crow	C	1
animals	birds	Cuculidae	<i>Cacomantis variolosus</i>	brush cuckoo	C	1
animals	birds	Cuculidae	<i>Chrysococcyx minutillus</i>	little bronze-cuckoo	C	1
animals	birds	Cuculidae	<i>Eudynamys scolopacea</i>	common koel	C	3
animals	birds	Cuculidae	<i>Chrysococcyx lucidus</i>	shining bronze-cuckoo	C	1
animals	birds	Cuculidae	<i>Chrysococcyx basalis</i>	Horsfield's bronze-cuckoo	C	1
animals	birds	Cuculidae	<i>Cuculus saturatus</i>	oriental cuckoo	C	1
animals	birds	Cuculidae	<i>Cuculus pallidus</i>	pallid cuckoo	C	5
animals	birds	Cuculidae	<i>Scythrops novaehollandiae</i>	channel-billed cuckoo	C	2
animals	birds	Dicaeidae	<i>Dicaeum hirundinaceum</i>	mistletoebird	C	1
animals	birds	Dicruridae	<i>Myiagra rubecula</i>	leaden flycatcher	C	3
animals	birds	Dicruridae	<i>Rhipidura leucophrys</i>	willie wagtail	C	5
animals	birds	Dicruridae	<i>Rhipidura fuliginosa</i>	grey fantail	C	8
animals	birds	Dicruridae	<i>Monarcha melanopsis</i>	black-faced monarch	C	2
animals	birds	Dicruridae	<i>Grallina cyanoleuca</i>	magpie-lark	C	12
animals	birds	Falconidae	<i>Falco berigora</i>	brown falcon	C	1
animals	birds	Falconidae	<i>Falco cenchroides</i>	nankeen kestrel	C	4
animals	birds	Gruidae	<i>Grus rubicunda</i>	brolga	C	1
animals	birds	Halcyonidae	<i>Dacelo leachii</i>	blue-winged kookaburra	C	3
animals	birds	Halcyonidae	<i>Todiramphus sanctus</i>	sacred kingfisher	C	2
animals	birds	Halcyonidae	<i>Todiramphus pyrrhopygia</i>	red-backed kingfisher	C	3
animals	birds	Halcyonidae	<i>Todiramphus macleayii</i>	forest kingfisher	C	2
animals	birds	Halcyonidae	<i>Dacelo novaeguineae</i>	laughing kookaburra	C	9
animals	birds	Hirundinidae	<i>Hirundo ariel</i>	fairy martin	C	2
animals	birds	Hirundinidae	<i>Hirundo nigricans</i>	tree martin	C	1
animals	birds	Hirundinidae	<i>Hirundo neoxena</i>	welcome swallow	C	1
animals	birds	Maluridae	<i>Malurus cyaneus</i>	superb fairy-wren	C	1
animals	birds	Maluridae	<i>Malurus melanocephalus</i>	red-backed fairy-wren	C	12
animals	birds	Maluridae	<i>Malurus lamberti</i>	variegated fairy-wren	C	6
animals	birds	Meliphagidae	<i>Meliphaga lewinii</i>	Lewin's honeyeater	C	2
animals	birds	Meliphagidae	<i>Entomyzon cyanotis</i>	blue-faced honeyeater	C	13
animals	birds	Meliphagidae	<i>Manorina flavigula</i>	yellow-throated miner	C	8
animals	birds	Meliphagidae	<i>Lichenostomus flavus</i>	yellow honeyeater	C	1
animals	birds	Meliphagidae	<i>Melithreptus gularis</i>	black-chinned honeyeater	R	1
animals	birds	Meliphagidae	<i>Manorina melanocephala</i>	noisy miner	C	6

Kingdom	Class	Family	Scientific Name	Common Name	NCA	EPBC Recs
animals	birds	Meliphagidae	<i>Plectorhyncha lanceolata</i>	striped honeyeater	C	6
animals	birds	Meliphagidae	<i>Melithreptus albogularis</i>	white-throated honeyeater	C	13
animals	birds	Meliphagidae	<i>Acanthagenys rufogularis</i>	spiny-cheeked honeyeater	C	1
animals	birds	Meliphagidae	<i>Lichenostomus virescens</i>	singing honeyeater	C	5
animals	birds	Meliphagidae	<i>Philemon citreogularis</i>	little friarbird	C	5
animals	birds	Meliphagidae	<i>Philemon corniculatus</i>	noisy friarbird	C	14
animals	birds	Meliphagidae	<i>Lichmera indistincta</i>	brown honeyeater	C	7
animals	birds	Meropidae	<i>Merops ornatus</i>	rainbow bee-eater	C	9
animals	birds	Motacillidae	<i>Anthus novaeseelandiae</i>	Richard's pipit	C	1
animals	birds	Neosittidae	<i>Daphoenositta chrysoptera</i>	varied sittella	C	5
animals	birds	Oriolidae	<i>Oriolus sagittatus</i>	olive-backed oriole	C	7
animals	birds	Oriolidae	<i>Sphecotheres viridis</i>	figbird	C	2
animals	birds	Otididae	<i>Ardeotis australis</i>	Australian bustard	C	2
animals	birds	Pachycephalidae	<i>Colluricincla harmonica</i>	grey shrike-thrush	C	10
animals	birds	Pachycephalidae	<i>Pachycephala rufiventris</i>	rufous whistler	C	7
animals	birds	Pardalotidae	<i>Pardalotus striatus</i>	striated pardalote	C	24
animals	birds	Pardalotidae	<i>Chthonicola sagittata</i>	speckled warbler	C	2
animals	birds	Pardalotidae	<i>Smicromnis brevirostris</i>	weebill	C	16
animals	birds	Pardalotidae	<i>Gerygone fusca</i>	western gerygone	C	1
animals	birds	Pardalotidae	<i>Acanthiza apicalis</i>	inland thornbill	C	2
animals	birds	Pardalotidae	<i>Gerygone olivacea</i>	white-throated gerygone	C	6
animals	birds	Pardalotidae	<i>Acanthiza reguloides</i>	buff-rumped thornbill	C	4
animals	birds	Passeridae	<i>Passer domesticus</i>	house sparrow	C	1
animals	birds	Passeridae	<i>Lonchura castaneothorax</i>	chestnut-breasted mannikin	C	1
animals	birds	Passeridae	<i>Taeniopygia bichenovii</i>	double-barred finch	C	5
animals	birds	Passeridae	<i>Taeniopygia guttata</i>	zebra finch	C	1
animals	birds	Petroicidae	<i>Microeca flavigaster</i>	lemon-bellied flycatcher	C	1
animals	birds	Phalacrocoracidae	<i>Phalacrocorax melanoleucos</i>	little pied cormorant	C	2
animals	birds	Phalacrocoracidae	<i>Phalacrocorax sulcirostris</i>	little black cormorant	C	3
animals	birds	Phasianidae	<i>Coturnix pectoralis</i>	stubble quail	C	1
animals	birds	Podargidae	<i>Podargus strigoides</i>	tawny frogmouth	C	3
animals	birds	Podicipedidae	<i>Tachybaptus novaehollandiae</i>	Australasian grebe	C	2
animals	birds	Pomatostomidae	<i>Pomatostomus temporalis</i>	grey-crowned babbler	C	9
animals	birds	Psittacidae	<i>Platycercus adscitus</i>	pale-headed rosella	C	9
animals	birds	Psittacidae	<i>Aprosmictus erythropterus</i>	red-winged parrot	C	8
animals	birds	Psittacidae	<i>Trichoglossus haematodus haematodus</i>	rainbow lorikeet	C	16
animals	birds	Psittacidae	<i>Platycercus adscitus palliceps</i>	pale-headed rosella (southern form)	C	4
animals	birds	Psittacidae	<i>Platycercus adscitus adscitus</i>	pale-headed rosella (northern form)	C	2
animals	birds	Ptilonorhynchidae	<i>Chlamydera maculata</i>	spotted bowerbird	C	1
animals	birds	Ptilonorhynchidae	<i>Chlamydera nuchalis</i>	great bowerbird	C	1
animals	birds	Rallidae	<i>Gallinula tenebrosa</i>	dusky moorhen	C	2
animals	birds	Rallidae	<i>Porphyrio porphyrio</i>	purple swamphen	C	1
animals	birds	Strigidae	<i>Ninox connivens</i>	barking owl	C	1
animals	birds	Strigidae	<i>Ninox novaeseelandiae</i>	southern boobook	C	1
animals	birds	Sylviidae	<i>Cisticola exilis</i>	golden-headed cisticola	C	2

Kingdom	Class	Family	Scientific Name	Common Name	NCA	EPBC Recs
animals	birds	Sylviidae	<i>Cincloramphus mathewsi</i>	rufous songlark	C	. 1
animals	birds	Sylviidae	<i>Acrocephalus stentoreus</i>	clamorous reed-warbler	C	. 1
animals	birds	Threskiornithidae	<i>Platalea regia</i>	royal spoonbill	C	. 1
animals	birds	Threskiornithidae	<i>Threskiornis spinicollis</i>	straw-necked ibis	C	. 1
animals	birds	Threskiornithidae	<i>Threskiornis molucca</i>	Australian white ibis	C	. 1
animals	birds	Threskiornithidae	<i>Platalea flavipes</i>	yellow-billed spoonbill	C	. 1
animals	birds	Turnicidae	<i>Turnix varia</i>	painted button-quail	C	. 1
animals	birds	Zosteropidae	<i>Zosterops lateralis</i>	silvereve	C	. 1
animals	insects	Nymphalidae	<i>Euploea core corinna</i>	common crow	.	. 6
animals	insects	Nymphalidae	<i>Acraea andromacha andromacha</i>	glasswing	.	. 2
animals	insects	Nymphalidae	<i>Junonia orithya albicincta</i>	blue argus	.	. 2
animals	insects	Nymphalidae	<i>Danaus chrysippus petilia</i>	lesser wanderer	.	. 1
animals	insects	Nymphalidae	<i>Hypolimnna bolina nerina</i>	varied eggfly	.	. 1
animals	insects	Nymphalidae	<i>Tirumala hamata hamata</i>	blue tiger	.	. 1
animals	insects	Nymphalidae	<i>Melanitis leda bankia</i>	common evening-brown	.	. 1
animals	insects	Nymphalidae	<i>Junonia villida calybe</i>	meadow argus	.	. 5
animals	insects	Papilionidae	<i>Papilio anactus</i>	dingy swallowtail	.	. 2
animals	insects	Papilionidae	<i>Cressida cressida cressida</i>	greasy swallowtail	.	. 1
animals	insects	Pieridae	<i>Eurema smilax</i>	small grass-yellow	.	. 1
animals	insects	Pieridae	<i>Catopsilia pomona pomona</i>	lemon migrant	.	. 6
animals	insects	Pieridae	<i>Cepora perimale scyllara</i>	caper gull (Australian subspecies)	.	. 1
animals	insects	Pieridae	<i>Belenois java teutonia</i>	caper white	.	. 6
animals	insects	Pieridae	<i>Elodina parthia</i>	striated pearl-white	.	. 1
animals	mammals	Dasyuridae	<i>Dasyurus hallucatus</i>	northern quoll	C	E 1
animals	mammals	Dasyuridae	<i>Sminthopsis macroura</i>	stripe-faced dunnart	C	. 1
animals	mammals	Emballonuridae	<i>Taphozous troughtoni</i>	Troughton's sheath-tail bat	E	. 1
animals	mammals	Emballonuridae	<i>Saccolaimus flaviventris</i>	yellow-bellied sheath-tail bat	C	. 1
animals	mammals	Macropodidae	<i>Macropus parryi</i>	whiptail wallaby	C	. 1
animals	mammals	Macropodidae	<i>Wallabia bicolor</i>	swamp wallaby	C	. 1
animals	mammals	Macropodidae	<i>Macropus giganteus</i>	eastern grey kangaroo	C	. 3
animals	mammals	Macropodidae	<i>Petrogale inornata</i>	unadorned rock-wallaby	C	. 1
animals	mammals	Macropodidae	<i>Macropus robustus</i>	common wallaroo	C	. 1
animals	mammals	Macropodidae	<i>Macropus dorsalis</i>	black-striped wallaby	C	. 2
animals	mammals	Macropodidae	<i>Lagorchestes conspicillatus</i>	spectacled hare-wallaby	C	. 2
animals	mammals	Molossidae	<i>Mormopterus sp.</i>		.	. 1
animals	mammals	Molossidae	<i>Chaerephon jobensis</i>	northern freetail bat	C	. 4
animals	mammals	Molossidae	<i>Mormopterus beccarii</i>	Beccari's freetail bat	C	. 1
animals	mammals	Muridae	<i>Mus musculus</i>	house mouse	.	. 6
animals	mammals	Muridae	<i>Pseudomys delicatulus</i>	delicate mouse	C	. 5
animals	mammals	Phalangeridae	<i>Trichosurus vulpecula</i>	common brushtail possum	C	. 1
animals	mammals	Phascolarctidae	<i>Phascolarctos cinereus</i>	koala	C	. 1
animals	mammals	Potoroidae	<i>Aepyprymnus rufescens</i>	rufous bettong	C	. 1
animals	mammals	Pseudocheiridae	<i>Petauroides volans</i>	greater glider	C	. 1
animals	mammals	Pteropodidae	<i>Pteropus scapulatus</i>	little red flying-fox	C	. 1
animals	mammals	Tachyglossidae	<i>Tachyglossus aculeatus</i>	short-beaked echidna	C	. 3

Kingdom	Class	Family	Scientific Name	Common Name	NCA	EPBC Recs
animals	mammals	Vespertilionidae	<i>Nyctophilus sp.</i>			1
animals	mammals	Vespertilionidae	<i>Chalinolobus gouldii</i>	Gould's wattled bat	C	7
animals	mammals	Vespertilionidae	<i>Scotorepens balstoni</i>	inland broad-nosed bat	C	1
animals	mammals	Vespertilionidae	<i>Vespadelus troughtoni</i>	eastern cave bat	C	2
animals	mammals	Vespertilionidae	<i>Chalinolobus nigrogriseus</i>	hoary wattled bat	C	3
animals	mammals	Vespertilionidae	<i>Vespadelus baverstocki</i>	inland forest bat	C	1
animals	mammals	Vespertilionidae	<i>Miniopterus australis</i>	little bent-wing bat	C	7
animals	mammals	Vespertilionidae	<i>Chalinolobus picatus</i>	little pied bat	R	8
animals	mammals	Vespertilionidae	<i>Scotorepens greyii</i>	little broad-nosed bat	C	9
animals	mammals	Vespertilionidae	<i>Chalinolobus morio</i>	chocolate wattled bat	C	3
animals	mammals	Vespertilionidae	<i>Nyctophilus gouldi</i>	Gould's long-eared bat	C	3
animals	reptiles	Agamidae	<i>Pogona barbata</i>	bearded dragon	C	2
animals	reptiles	Agamidae	<i>Diporiphora australis</i>		C	3
animals	reptiles	Boidae	<i>Antaresia maculosus</i>		C	2
animals	reptiles	Boidae	<i>Aspidites melanocephalus</i>	black-headed python	C	1
animals	reptiles	Colubridae	<i>Boiga irregularis</i>	brown tree snake	C	1
animals	reptiles	Elapidae	<i>Suta suta</i>	myall snake	C	1
animals	reptiles	Elapidae	<i>Pseudonaja textilis</i>	eastern brown snake	C	1
animals	reptiles	Elapidae	<i>Hoplocephalus bitorquatus</i>	pale-headed snake	C	1
animals	reptiles	Gekkonidae	<i>Gehyra dubia</i>		C	4
animals	reptiles	Gekkonidae	<i>Oedura monilis</i>		C	3
animals	reptiles	Gekkonidae	<i>Heteronotia binoei</i>	Bynoe's gecko	C	13
animals	reptiles	Gekkonidae	<i>Nephrurus asper</i>	spiny knob-tailed gecko	C	2
animals	reptiles	Gekkonidae	<i>Gehyra catenata</i>		C	3
animals	reptiles	Gekkonidae	<i>Strophurus williamsi</i>	soft-spined gecko	C	2
animals	reptiles	Gekkonidae	<i>Diplodactylus steindachneri</i>	Steindachner's gecko	C	11
animals	reptiles	Gekkonidae	<i>Diplodactylus conspicillatus</i>	fat-tailed diplodactylus	C	8
animals	reptiles	Gekkonidae	<i>Diplodactylus vittatus</i>	wood gecko	C	1
animals	reptiles	Pygopodidae	<i>Lialis burtonis</i>	Burton's legless lizard	C	1
animals	reptiles	Scincidae	<i>Ctenotus taeniolatus</i>	copper-tailed skink	C	12
animals	reptiles	Scincidae	<i>Lerista punctatovittata</i>		C	1
animals	reptiles	Scincidae	<i>Cryptoblepharus carnabyi</i>		C	2
animals	reptiles	Scincidae	<i>Menetia timlowi</i>		C	1
animals	reptiles	Scincidae	<i>Carlia pectoralis</i>		C	15
animals	reptiles	Scincidae	<i>Ctenotus strauchii</i>		C	1
animals	reptiles	Scincidae	<i>Ctenotus robustus</i>		C	5
animals	reptiles	Scincidae	<i>Lerista fragilis</i>		C	8
animals	reptiles	Scincidae	<i>Morethia boulengeri</i>		C	4
animals	reptiles	Scincidae	<i>Cryptoblepharus virgatus</i>		C	6
animals	reptiles	Typhlopidae	<i>Ramphotyphlops affinis</i>		C	1
animals	reptiles	Typhlopidae	<i>Ramphotyphlops unguirostris</i>		C	1
animals	reptiles	Varanidae	<i>Varanus tristis</i>	black-tailed monitor	C	2
plants	ferns	Adiantaceae	<i>Cheilanthes distans</i>	bristly cloak fern	C	1
plants	higher dicots	Acanthaceae	<i>Rostellularia adscendens</i>		C	1
plants	higher dicots	Acanthaceae	<i>Pseuderanthemum variabile</i>	pastel flower	C	1

Kingdom	Class	Family	Scientific Name	Common Name	NCA	EPBC Recs
plants	higher dicots	Acanthaceae	<i>Harnieria sp. (Lornesleigh E.J.Thompson+ CHA75)</i>		C	. 1
plants	higher dicots	Aizoaceae	<i>Trianthema triquetra</i>	red spinach	C	. 1
plants	higher dicots	Amaranthaceae	<i>Deeringia amaranthoides</i>	redberry	C	. 1
plants	higher dicots	Amaranthaceae	<i>Amaranthus cochleitepalus</i>		C	. 1
plants	higher dicots	Amaranthaceae	<i>Ptilotus polystachyus forma polystachyus</i>		C	. 1
plants	higher dicots	Anacardiaceae	<i>Pleiogynium timorense</i>	Burdekin plum	C	. 1
plants	higher dicots	Apocynaceae	<i>Alyxia ruscifolia</i>		C	. 1
plants	higher dicots	Apocynaceae	<i>Wrightia pubescens</i>		C	. 1
plants	higher dicots	Apocynaceae	<i>Parsonsia lanceolata</i>	northern silkpod	C	. 3
plants	higher dicots	Apocynaceae	<i>Carissa ovata</i>	currantbush	C	. 2
plants	higher dicots	Apocynaceae	<i>Wrightia versicolor</i>		C	. 1
plants	higher dicots	Araliaceae	<i>Polyscias elegans</i>	celery wood	C	. 1
plants	higher dicots	Araliaceae	<i>Astrotricha biddulphiana</i>		C	. 1
plants	higher dicots	Asclepiadaceae	<i>Secamone elliptica</i>		C	. 1
plants	higher dicots	Asclepiadaceae	<i>Marsdenia viridiflora subsp. viridiflora</i>		C	. 1
plants	higher dicots	Asteraceae	<i>Calotis dentex</i>	white burr daisy	C	. 1
plants	higher dicots	Asteraceae	<i>Camptacra barbata</i>		C	. 1
plants	higher dicots	Asteraceae	<i>Xanthium spinosum</i>	Bathurst burr		. 1
plants	higher dicots	Asteraceae	<i>Pterocaulon serrulatum var. serrulatum</i>		C	. 1
plants	higher dicots	Asteraceae	<i>Parthenium hysterophorus</i>	parthenium weed		. 2
plants	higher dicots	Asteraceae	<i>Gamochaeta pensylvanica</i>			. 1
plants	higher dicots	Asteraceae	<i>Wedelia spilanthoides</i>		C	. 1
plants	higher dicots	Asteraceae	<i>Calotis cuneifolia</i>	burr daisy	C	. 1
plants	higher dicots	Asteraceae	<i>Tridax procumbens</i>	tridax daisy		. 1
plants	higher dicots	Asteraceae	<i>Cirsium vulgare</i>	spear thistle		. 1
plants	higher dicots	Asteraceae	<i>Pluchea dentex</i>	bowl daisy	C	. 1
plants	higher dicots	Asteraceae	<i>Calotis cuneata</i>		C	. 1
plants	higher dicots	Bignoniaceae	<i>Pandorea pandorana</i>	wonga vine	C	. 1
plants	higher dicots	Boraginaceae	<i>Ehretia membranifolia</i>	weeping koda	C	. 1
plants	higher dicots	Boraginaceae	<i>Heliotropium geocharis</i>		C	. 1
plants	higher dicots	Brassicaceae	<i>Lepidium virginicum</i>	Virginian peppergrass		. 1
plants	higher dicots	Cactaceae	<i>Opuntia tomentosa</i>	velvety tree pear		. 2
plants	higher dicots	Caesalpiniaceae	<i>Cassia brewsteri</i>		C	. 2
plants	higher dicots	Caesalpiniaceae	<i>Cassia tomentella</i>		C	. 1
plants	higher dicots	Caesalpiniaceae	<i>Senna surattensis subsp. retusa</i>		C	. 1
plants	higher dicots	Caesalpiniaceae	<i>Lysiphyllum hookeri</i>	Queensland ebony	C	. 1
plants	higher dicots	Capparaceae	<i>Capparis</i>		C	. 1
plants	higher dicots	Capparaceae	<i>Capparis shanesiana</i>		C	. 1
plants	higher dicots	Capparaceae	<i>Capparis lasiantha</i>	nipan	C	. 1
plants	higher dicots	Casuarinaceae	<i>Casuarina cristata</i>	belah	C	. 1
plants	higher dicots	Celastraceae	<i>Maytenus disperma</i>	orange boxwood	C	. 1
plants	higher dicots	Celastraceae	<i>Maytenus cunninghamii</i>	yellow berry bush	C	. 1
plants	higher dicots	Celastraceae	<i>Elaeodendron australe var. integrifolium</i>		C	. 1
plants	higher dicots	Celastraceae	<i>Cassine australis var. angustifolia</i>		C	. 1
plants	higher dicots	Chenopodiaceae	<i>Enchylaena tomentosa</i>		C	. 1

Kingdom	Class	Family	Scientific Name	Common Name	NCA	EPBC Recs
plants	higher dicots	Chenopodiaceae	<i>Chenopodium auricomiforme</i>		C	. 1
plants	higher dicots	Clusiaceae	<i>Hypericum gramineum</i>		C	. 1
plants	higher dicots	Combretaceae	<i>Macropteranthes leichhardtii</i>	bonewood	C	. 1
plants	higher dicots	Convolvulaceae	<i>Ipomoea gracilis</i>		C	. 1
plants	higher dicots	Cucurbitaceae	<i>Diplocyclos palmatus subsp. palmatus</i>		C	. 1
plants	higher dicots	Ebenaceae	<i>Diospyros humilis</i>	small-leaved ebony	C	. 1
plants	higher dicots	Elatinaceae	<i>Elatine gratioloides</i>	waterwort	C	. 1
plants	higher dicots	Erythroxylaceae	<i>Erythroxylum australe</i>	cocaine tree	C	. 1
plants	higher dicots	Euphorbiaceae	<i>Croton insularis</i>	Queensland cascarilla	C	. 2
plants	higher dicots	Euphorbiaceae	<i>Acalypha eremorum</i>	soft acalypha	C	. 2
plants	higher dicots	Euphorbiaceae	<i>Croton phebaliioides</i>	narrow-leaved croton	C	. 2
plants	higher dicots	Euphorbiaceae	<i>Claoxylon tenerifolium</i>	Queensland brittlewood	C	. 1
plants	higher dicots	Euphorbiaceae	<i>Bridelia leichhardtii</i>		C	. 2
plants	higher dicots	Euphorbiaceae	<i>Chamaesyce coghlanii</i>		C	. 1
plants	higher dicots	Euphorbiaceae	<i>Bertya pedicellata</i>		R	. 3
plants	higher dicots	Euphorbiaceae	<i>Phyllanthus lacunarius</i>		C	. 1
plants	higher dicots	Euphorbiaceae	<i>Euphorbia tannensis subsp. eremophila</i>		C	. 1
plants	higher dicots	Euphorbiaceae	<i>Adriana urticoides var. urticoides</i>		C	. 2
plants	higher dicots	Euphorbiaceae	<i>Phyllanthus lamprophyllus</i>		C	. 1
plants	higher dicots	Fabaceae	<i>Glycine falcata</i>		C	. 1
plants	higher dicots	Fabaceae	<i>Glycine tabacina</i>	glycine pea	C	. 1
plants	higher dicots	Fabaceae	<i>Rhynchosia minima</i>		C	. 1
plants	higher dicots	Fabaceae	<i>Desmodium muelleri</i>		C	. 3
plants	higher dicots	Fabaceae	<i>Canavalia papuana</i>	wild jack bean	C	. 1
plants	higher dicots	Fabaceae	<i>Glycine tomentella</i>	woolly glycine	C	. 1
plants	higher dicots	Fabaceae	<i>Indigofera australis</i>		C	. 1
plants	higher dicots	Fabaceae	<i>Desmodium macrocarpum</i>		R	. 1
plants	higher dicots	Fabaceae	<i>Zornia muelleriana subsp. muelleriana</i>		C	. 1
plants	higher dicots	Fabaceae	<i>Zornia dyctiocarpa var. filifolia</i>		C	. 1
plants	higher dicots	Fabaceae	<i>Vigna radiata var. sublobata</i>		C	. 1
plants	higher dicots	Fabaceae	<i>Desmodium campylocaulon</i>		C	. 1
plants	higher dicots	Fabaceae	<i>Desmodium brachypodum</i>	large ticktrefoil	C	. 1
plants	higher dicots	Fabaceae	<i>Alysicarpus muelleri</i>		C	. 2
plants	higher dicots	Fabaceae	<i>Stylosanthes scabra</i>		.	. 1
plants	higher dicots	Haloragaceae	<i>Haloragis aspera</i>	raspweed	C	. 1
plants	higher dicots	Lamiaceae	<i>Leucas lavandulifolia</i>		.	. 1
plants	higher dicots	Lamiaceae	<i>Plectranthus diversus</i>		C	. 1
plants	higher dicots	Lamiaceae	<i>Teucrium integrifolium</i>		C	. 1
plants	higher dicots	Malvaceae	<i>Sida</i>		C	. 1
plants	higher dicots	Malvaceae	<i>Sida virgata</i>		C	. 1
plants	higher dicots	Malvaceae	<i>Sida cordifolia</i>		.	. 1
plants	higher dicots	Malvaceae	<i>Abutilon subviscosum</i>		C	. 1
plants	higher dicots	Malvaceae	<i>Abelmoschus ficulneus</i>	native rosella	C	. 1
plants	higher dicots	Malvaceae	<i>Sida sp. (Musselbrook M.B.Thomas+ MRS437)</i>		C	. 1
plants	higher dicots	Malvaceae	<i>Malvastrum americanum var. americanum</i>		.	. 1

Kingdom	Class	Family	Scientific Name	Common Name	NCA	EPBC Recs
plants	higher dicots	Malvaceae	<i>Abutilon asiaticum var. australiense</i>		C	. 2
plants	higher dicots	Malvaceae	<i>Abutilon oxycarpum forma acutatum</i>		C	. 1
plants	higher dicots	Malvaceae	<i>Hibiscus krichauffianus</i>		C	. 1
plants	higher dicots	Malvaceae	<i>Abutilon micropetalum</i>		C	. 2
plants	higher dicots	Malvaceae	<i>Hibiscus divaricatus</i>		C	. 2
plants	higher dicots	Malvaceae	<i>Sida filiformis</i>		C	. 1
plants	higher dicots	Mimosaceae	<i>Acacia conferta</i>		C	. 2
plants	higher dicots	Mimosaceae	<i>Acacia oswaldii</i>	miljee	C	. 1
plants	higher dicots	Mimosaceae	<i>Acacia shirleyi</i>	lancewood	C	. 1
plants	higher dicots	Mimosaceae	<i>Acacia fodinalis</i>		C	. 1
plants	higher dicots	Mimosaceae	<i>Acacia fimbriata</i>	Brisbane golden wattle	C	. 1
plants	higher dicots	Mimosaceae	<i>Acacia bidwillii</i>		C	. 1
plants	higher dicots	Mimosaceae	<i>Acacia salicina</i>	doolan	C	. 1
plants	higher dicots	Mimosaceae	<i>Acacia flavescens</i>	toothed wattle	C	. 1
plants	higher dicots	Mimosaceae	<i>Neptunia gracilis forma gracilis</i>		C	. 1
plants	higher dicots	Mimosaceae	<i>Acacia blakei subsp. blakei</i>		C	. 1
plants	higher dicots	Mimosaceae	<i>Archidendropsis thozetiana</i>		C	. 1
plants	higher dicots	Mimosaceae	<i>Acacia bancroftiorum</i>		C	. 1
plants	higher dicots	Mimosaceae	<i>Acacia harpophylla</i>	brigalow	C	. 1
plants	higher dicots	Moraceae	<i>Ficus platypoda</i>		C	. 1
plants	higher dicots	Myoporaceae	<i>Myoporum montanum</i>	boobiella	C	. 3
plants	higher dicots	Myoporaceae	<i>Myoporum acuminatum</i>	coastal boobiella	C	. 1
plants	higher dicots	Myrtaceae	<i>Corymbia papuana</i>	ghost gum	C	. 1
plants	higher dicots	Myrtaceae	<i>Corymbia clarksoniana</i>		C	. 1
plants	higher dicots	Myrtaceae	<i>Melaleuca fluviatilis</i>		C	. 1
plants	higher dicots	Myrtaceae	<i>Eucalyptus raveretiana</i>	black ironbox	V	V 3
plants	higher dicots	Myrtaceae	<i>Micromyrtus capricornia</i>		C	. 1
plants	higher dicots	Myrtaceae	<i>Eucalyptus crebra x E.orgadophila</i>		C	. 1
plants	higher dicots	Myrtaceae	<i>Eucalyptus tholiformis</i>		C	. 1
plants	higher dicots	Myrtaceae	<i>Austromyrtus bidwillii</i>	python tree	C	. 1
plants	higher dicots	Myrtaceae	<i>Eucalyptus persistens</i>		C	. 1
plants	higher dicots	Myrtaceae	<i>Eucalyptus tenuipes</i>	narrow-leaved white mahogany	C	. 1
plants	higher dicots	Myrtaceae	<i>Eucalyptus crebra</i>	narrow-leaved red ironbark	C	. 1
plants	higher dicots	Oleaceae	<i>Notelaea microcarpa</i>		C	. 1
plants	higher dicots	Oleaceae	<i>Jasminum simplicifolium subsp. australiense</i>		C	. 1
plants	higher dicots	Onagraceae	<i>Ludwigia</i>		C	. 1
plants	higher dicots	Oxalidaceae	<i>Oxalis radicata</i>		C	. 2
plants	higher dicots	Pittosporaceae	<i>Bursaria incana</i>		C	. 1
plants	higher dicots	Pittosporaceae	<i>Citriobatus spinescens</i>	wallaby apple	C	. 1
plants	higher dicots	Plumbaginaceae	<i>Plumbago zeylanica</i>	native plumbago	C	. 1
plants	higher dicots	Portulacaceae	<i>Portulaca</i>		C	. 1
plants	higher dicots	Proteaceae	<i>Persoonia amaliae</i>		R	. 2
plants	higher dicots	Proteaceae	<i>Grevillea pteridifolia</i>	golden parrot tree	C	. 1
plants	higher dicots	Proteaceae	<i>Hakea lorea subsp. lorea</i>		C	. 1
plants	higher dicots	Rhamnaceae	<i>Alphitonia excelsa</i>	soap tree	C	. 1

Kingdom	Class	Family	Scientific Name	Common Name	NCA	EPBC Recs
plants	higher dicots	Rhamnaceae	<i>Ventilago viminalis</i>	supplejack	C	2
plants	higher dicots	Rubiaceae	<i>Psyrdrax odorata</i>		C	1
plants	higher dicots	Rubiaceae	<i>Psyrdrax saligna forma saligna</i>		C	1
plants	higher dicots	Rubiaceae	<i>Oldenlandia mitrasacmoides subsp. trachymenoides</i>		C	1
plants	higher dicots	Rubiaceae	<i>Psyrdrax odorata subsp. australiana</i>		C	1
plants	higher dicots	Rubiaceae	<i>Spermacoce multicaulis</i>		C	1
plants	higher dicots	Rubiaceae	<i>Canthium odoratum</i>		C	1
plants	higher dicots	Rubiaceae	<i>Larsenaikia ochreatea</i>		C	2
plants	higher dicots	Rubiaceae	<i>Spermacoce brachystema</i>		C	1
plants	higher dicots	Rutaceae	<i>Citrus glauca</i>		C	1
plants	higher dicots	Rutaceae	<i>Flindersia australis</i>	crow's ash	C	1
plants	higher dicots	Sapindaceae	<i>Alectryon connatus</i>	grey birds-eye	C	1
plants	higher dicots	Sapindaceae	<i>Alectryon diversifolius</i>	scrub boonaree	C	1
plants	higher dicots	Sapindaceae	<i>Cupaniopsis anacardioides</i>	tuckeroo	C	1
plants	higher dicots	Sapindaceae	<i>Atalaya hemiglauca</i>		C	1
plants	higher dicots	Sapotaceae	<i>Pouteria pohlmaniana var. (Gilbert River C.T.White 1409)</i>		C	1
plants	higher dicots	Scrophulariaceae	<i>Stemodia glabella</i>		C	1
plants	higher dicots	Simaroubaceae	<i>Quassia sp. (Dam Creek T.S.Ryan 1006)</i>		C	1
plants	higher dicots	Solanaceae	<i>Solanum esuriale</i>	quena	C	1
plants	higher dicots	Solanaceae	<i>Solanum parvifolium</i>		C	1
plants	higher dicots	Solanaceae	<i>Solanum seaforthianum</i>	Brazilian nightshade		1
plants	higher dicots	Solanaceae	<i>Solanum ellipticum</i>	potato bush	C	1
plants	higher dicots	Sterculiaceae	<i>Hannafordia shanesii</i>		C	1
plants	higher dicots	Sterculiaceae	<i>Brachychiton populneus subsp. trilobus</i>		C	1
plants	higher dicots	Sterculiaceae	<i>Brachychiton australis</i>	broad-leaved bottle tree	C	2
plants	higher dicots	Sterculiaceae	<i>Melhanina oblongifolia</i>		C	1
plants	higher dicots	Tiliaceae	<i>Grewia latifolia</i>	dysentery plant	C	1
plants	higher dicots	Verbenaceae	<i>Lantana camara</i>			1
plants	higher dicots	Violaceae	<i>Hybanthus stellarioides</i>		C	1
plants	higher dicots	Vitaceae	<i>Cayratia clematidea</i>	slender grape	C	1
plants	lower dicots	Hernandiaceae	<i>Gyrocarpus americanus</i>		C	1
plants	lower dicots	Menispermaceae	<i>Tinospora smilacina</i>	snakevine	C	1
plants	lower dicots	Nymphaeaceae	<i>Nymphaea violacea</i>		C	1
plants	monocots	Alismataceae	<i>Caldesia oligococca</i>		C	1
plants	monocots	Cyperaceae	<i>Cyperus bifax</i>	western nutgrass	C	1
plants	monocots	Cyperaceae	<i>Gahnia aspera</i>		C	1
plants	monocots	Cyperaceae	<i>Cyperus fulvus</i>		C	2
plants	monocots	Cyperaceae	<i>Cyperus concinnus</i>		C	1
plants	monocots	Cyperaceae	<i>Cyperus gracilis</i>		C	2
plants	monocots	Cyperaceae	<i>Scleria brownii</i>		C	1
plants	monocots	Cyperaceae	<i>Abildgaardia ovata</i>		C	1
plants	monocots	Cyperaceae	<i>Cyperus leiocaulon</i>		C	1
plants	monocots	Cyperaceae	<i>Fimbristylis microcarya</i>		C	1
plants	monocots	Cyperaceae	<i>Cyperus sesquiflorus</i>			1
plants	monocots	Cyperaceae	<i>Cyperus esculentus</i>	yellow nutgrass		1

Kingdom	Class	Family	Scientific Name	Common Name	NCA	EPBC Recs
plants	monocots	Hydrocharitaceae	<i>Ottelia ovalifolia</i>	swamp lily	C	. 1
plants	monocots	Najadaceae	<i>Najas tenuifolia</i>	water nymph	C	. 1
plants	monocots	Poaceae	<i>Bothriochloa erianthoides</i>	satintop grass	C	. 1
plants	monocots	Poaceae	<i>Dichanthium queenslandicum</i>		V	V 1
plants	monocots	Poaceae	<i>Eriochloa pseudoacrotricha</i>		C	. 1
plants	monocots	Poaceae	<i>Eragrostis longipedicellata</i>		C	. 2
plants	monocots	Poaceae	<i>Aristida calycina</i> var. <i>calycina</i>		C	. 1
plants	monocots	Poaceae	<i>Aristida holathera</i> var. <i>holathera</i>		C	. 1
plants	monocots	Poaceae	<i>Sporobolus fertilis</i>	giant Parramatta grass		. 1
plants	monocots	Poaceae	<i>Paspalidium gracile</i>	slender panic	C	. 1
plants	monocots	Poaceae	<i>Leptochloa digitata</i>		C	. 1
plants	monocots	Poaceae	<i>Eragrostis elongata</i>		C	. 1
plants	monocots	Poaceae	<i>Dichanthium setosum</i>		R	V 2
plants	monocots	Poaceae	<i>Eragrostis brownii</i>	Brown's lovegrass	C	. 3
plants	monocots	Poaceae	<i>Echinochloa colona</i>	awnless barnyard grass		. 3
plants	monocots	Poaceae	<i>Digitaria ciliaris</i>	summer grass		. 1
plants	monocots	Poaceae	<i>Digitaria bicornis</i>		C	. 1
plants	monocots	Poaceae	<i>Eragrostis alveiformis</i>		C	. 1
plants	monocots	Poaceae	<i>Enneapogon intermedius</i>		C	. 1
plants	monocots	Poaceae	<i>Aristida queenslandica</i>		C	. 1
plants	monocots	Poaceae	<i>Whalleya subxerophila</i>		C	. 1
plants	monocots	Poaceae	<i>Setaria australiensis</i>	scrub pigeon grass	C	. 1
plants	monocots	Poaceae	<i>Iseilema vaginiflorum</i>	red flinders grass	C	. 1
plants	monocots	Poaceae	<i>Eragrostis tenuifolia</i>	elastic grass		. 1
plants	monocots	Poaceae	<i>Elytrophorus spicatus</i>		C	. 1
plants	monocots	Poaceae	<i>Digitaria breviglumis</i>		C	. 2
plants	monocots	Poaceae	<i>Paspalidium albobillosum</i>		C	. 2
plants	monocots	Poaceae	<i>Echinochloa telmatophila</i>	swamp barnyard grass	C	. 1
plants	monocots	Poaceae	<i>Sporobolus jacquemontii</i>			. 1
plants	monocots	Poaceae	<i>Pseudoraphis spinescens</i>	spiny mudgrass	C	. 1
plants	monocots	Poaceae	<i>Paspalidium caespitosum</i>	brigalow grass	C	. 1
plants	monocots	Poaceae	<i>Eragrostis spartinoides</i>		C	. 3
plants	monocots	Poaceae	<i>Eragrostis megalosperma</i>		C	. 2
plants	monocots	Poaceae	<i>Calyptochloa gracillima</i>		C	. 1
plants	monocots	Poaceae	<i>Ancistrachne uncinulata</i>	hooky grass	C	. 2
plants	monocots	Poaceae	<i>Paspalidium criniforme</i>		C	. 2
plants	monocots	Poaceae	<i>Paraneurachne muelleri</i>		C	. 1
plants	monocots	Poaceae	<i>Moorochloa eruciformis</i>			. 1
plants	monocots	Poaceae	<i>Dichanthium aristatum</i>	angleton grass		. 1
plants	monocots	Poaceae	<i>Whiteochloa airoides</i>		C	. 1
plants	monocots	Poaceae	<i>Sporobolus elongatus</i>		C	. 1
plants	monocots	Poaceae	<i>Iseilema macratherum</i>		C	. 1
plants	monocots	Poaceae	<i>Eragrostis tenellula</i>	delicate lovegrass	C	. 1
plants	monocots	Poaceae	<i>Eragrostis lacunaria</i>	purple lovegrass	C	. 1
plants	monocots	Poaceae	<i>Digitaria longiflora</i>		C	. 1

Kingdom	Class	Family	Scientific Name	Common Name	NCA	EPBC	Recs
plants	monocots	Poaceae	<i>Dichanthium fecundum</i>	curly bluegrass	C	.	1
plants	monocots	Poaceae	<i>Chrysopogon fallax</i>		C	.	1
plants	monocots	Poaceae	<i>Chloris ventricosa</i>	tall chloris	C	.	1
plants	monocots	Poaceae	<i>Aristida personata</i>		C	.	1
plants	monocots	Poaceae	<i>Thellungia advena</i>	coolibah grass	C	.	1
plants	monocots	Poaceae	<i>Panicum paludosum</i>	swamp panic	C	.	1
plants	monocots	Poaceae	<i>Eriochloa procera</i>	slender cupgrass	C	.	1
plants	monocots	Poaceae	<i>Urochloa foliosa</i>		C	.	1
plants	monocots	Poaceae	<i>Themeda avenacea</i>		C	.	1
plants	monocots	Poaceae	<i>Aristida lignosa</i>		C	.	1
plants	monocots	Poaceae	<i>Eriachne obtusa</i>		C	.	1
plants	monocots	Poaceae	<i>Eleusine indica</i>	crowsfoot grass		.	1
plants	monocots	Poaceae	<i>Eulalia aurea</i>	silky browntop	C	.	2
plants	monocots	Poaceae	<i>Eriachne rara</i>		C	.	1
plants	monocots	Poaceae	<i>Chloris divaricata</i> var. <i>divaricata</i>	slender chloris	C	.	1
plants	monocots	Poaceae	<i>Setaria pumila</i> subsp. <i>pallidifusca</i>			.	1
plants	monocots	Poaceae	<i>Dichanthium sericeum</i> subsp. <i>sericeum</i>		C	.	3
plants	monocots	Poaceae	<i>Bothriochloa decipiens</i> var. <i>decipiens</i>		C	.	1
plants	monocots	Poaceae	<i>Leptochloa decipiens</i> subsp. <i>peacockii</i>		C	.	1
plants	monocots	Poaceae	<i>Aristida jerichoensis</i> var. <i>subspinulifera</i>		C	.	4
plants	monocots	Poaceae	<i>Eriachne mucronata</i> forma (<i>Alpha C.E.Hubbard 7882</i>)		C	.	1
plants		Hemerocallidaceae	<i>Dianella nervosa</i>		C	.	1
plants		Laxmanniaceae	<i>Lomandra longifolia</i>		C	.	1
plants		Laxmanniaceae	<i>Eustrephus latifolius</i>	wombat berry	C	.	1

CODES

NCA - Indicates the conservation status of each taxon under the *Nature Conservation Act 1992*.

The codes are Presumed Extinct (PE), Endangered (E), Vulnerable (V), Rare (R), Common (C) or Not Protected ().

EPBC - Indicates the conservation status of each taxon under the *Environment Protection and Biodiversity Conservation Act 1999*.

The codes are Conservation Dependent (CD), Critically Endangered (CE), Endangered (E), Extinct (EX), Extinct in the Wild (XW) and Vulnerable (V).

Recs - Indicates the number of records of the species contained within the database for the area searched.



Queensland Government

Environmental Protection Agency Queensland Parks and Wildlife Service

Wildlife Online Extract

Search Criteria: Species List for a Defined Area

Species: All

Status: All

Date: All

Latitude: 21.8736 to 21.9422

Longitude: 147.9408 to 148.5572

Email: bronwen.forsyth@maunsell.com

Date submitted: Monday 13 Feb 2006 12:04:14

Date extracted: Monday 13 Feb 2006 12:15:02

The number of records retrieved = 109

Kingdom	Class	Family	Scientific Name	Common Name	NCA	EPBC Recs
animals	amphibians	Bufo	<i>Bufo marinus</i>	cane toad		1
animals	amphibians	Hylidae	<i>Litoria caerulea</i>	common green treefrog	C	1
animals	amphibians	Hylidae	<i>Cyclorana novaehollandiae</i>	eastern snapping frog	C	4
animals	birds	Accipitridae	<i>Aquila audax</i>	wedge-tailed eagle	C	1
animals	birds	Accipitridae	<i>Haliastur sphenurus</i>	whistling kite	C	1
animals	birds	Artamidae	<i>Gymnorhina tibicen</i>	Australian magpie	C	4
animals	birds	Artamidae	<i>Cracticus nigrogularis</i>	pied butcherbird	C	2
animals	birds	Cacatuidae	<i>Cacatua galerita</i>	sulphur-crested cockatoo	C	2
animals	birds	Cacatuidae	<i>Cacatua roseicapilla</i>	galah	C	1
animals	birds	Columbidae	<i>Ocyphaps lophotes</i>	crested pigeon	C	2
animals	birds	Corcoracidae	<i>Struthidea cinerea</i>	apostlebird	C	1
animals	birds	Corvidae	<i>Corvus orru</i>	Torresian crow	C	4
animals	birds	Corvidae	<i>Corvus bennetti</i>	little crow	C	1
animals	birds	Dicruridae	<i>Grallina cyanoleuca</i>	magpie-lark	C	2
animals	birds	Dicruridae	<i>Rhipidura fuliginosa</i>	grey fantail	C	1
animals	birds	Falconidae	<i>Falco berigora</i>	brown falcon	C	1
animals	birds	Falconidae	<i>Falco cenchroides</i>	nankeen kestrel	C	1
animals	birds	Halcyonidae	<i>Dacelo leachii</i>	blue-winged kookaburra	C	1
animals	birds	Maluridae	<i>Malurus melanocephalus</i>	red-backed fairy-wren	C	1
animals	birds	Meliphagidae	<i>Entomyzon cyanotis</i>	blue-faced honeyeater	C	1
animals	birds	Meliphagidae	<i>Lichmera indistincta</i>	brown honeyeater	C	1
animals	birds	Meliphagidae	<i>Melithreptus albogularis</i>	white-throated honeyeater	C	2
animals	birds	Meliphagidae	<i>Manorina melanocephala</i>	noisy miner	C	2
animals	birds	Meliphagidae	<i>Manorina flavigula</i>	yellow-throated miner	C	1
animals	birds	Meropidae	<i>Merops ornatus</i>	rainbow bee-eater	C	1
animals	birds	Otididae	<i>Ardeotis australis</i>	Australian bustard	C	1
animals	birds	Pardalotidae	<i>Pardalotus striatus</i>	striated pardalote	C	3
animals	birds	Pardalotidae	<i>Smicromnis brevirostris</i>	weebill	C	1
animals	birds	Passeridae	<i>Taeniopygia bichenovii</i>	double-barred finch	C	1
animals	birds	Psittacidae	<i>Platycercus adscitus</i>	pale-headed rosella	C	1
animals	birds	Psittacidae	<i>Trichoglossus haematodus haematodus</i>	rainbow lorikeet	C	1
animals	mammals	Dasyuridae	<i>Sminthopsis macroura</i>	stripe-faced dunnart	C	2
animals	mammals	Emballonuridae	<i>Saccolaimus flaviventris</i>	yellow-bellied sheath-tail bat	C	1
animals	mammals	Molossidae	<i>Mormopterus sp.</i>			1
animals	mammals	Vespertilionidae	<i>Chalinolobus gouldii</i>	Gould's wattled bat	C	1
animals	mammals	Vespertilionidae	<i>Chalinolobus nigrogriseus</i>	hoary wattled bat	C	2
animals	reptiles	Agamidae	<i>Pogona barbata</i>	bearded dragon	C	1
animals	reptiles	Agamidae	<i>Amphibolurus burnsi</i>		C	1
animals	reptiles	Agamidae	<i>Diporiphora australis</i>		C	1
animals	reptiles	Boidae	<i>Antaresia maculosus</i>		C	5
animals	reptiles	Boidae	<i>Aspidites melanocephalus</i>	black-headed python	C	3
animals	reptiles	Colubridae	<i>Dendrelaphis punctulata</i>	common tree snake	C	1
animals	reptiles	Elapidae	<i>Suta suta</i>	myall snake	C	3
animals	reptiles	Elapidae	<i>Demansia psammophis</i>	yellow-faced whip snake	C	1
animals	reptiles	Elapidae	<i>Simoselaps australis</i>	coral snake	C	1

Kingdom	Class	Family	Scientific Name	Common Name	NCA	EPBC Recs
animals	reptiles	Elapidae	<i>Hoplocephalus bitorquatus</i>	pale-headed snake	C	1
animals	reptiles	Elapidae	<i>Rhinoplocephalus boschmai</i>	Carpentaria whip snake	C	4
animals	reptiles	Gekkonidae	<i>Oedura monilis</i>		C	1
animals	reptiles	Gekkonidae	<i>Strophurus williamsi</i>	soft-spined gecko	C	3
animals	reptiles	Gekkonidae	<i>Diplodactylus steindachneri</i>	Steindachner's gecko	C	7
animals	reptiles	Gekkonidae	<i>Heteronotia binoei</i>	Bynoe's gecko	C	1
animals	reptiles	Pygopodidae	<i>Lialis burtonis</i>	Burton's legless lizard	C	1
animals	reptiles	Scincidae	<i>Ctenotus robustus</i>		C	3
animals	reptiles	Typhlopidae	<i>Ramphotyphlops ligatus</i>		C	1
plants	higher dicots	Amaranthaceae	<i>Deeringia amaranthoides</i>	redberry	C	1
plants	higher dicots	Anacardiaceae	<i>Pleiogynium timorense</i>	Burdekin plum	C	1
plants	higher dicots	Apocynaceae	<i>Carissa ovata</i>	currantbush	C	1
plants	higher dicots	Apocynaceae	<i>Wrightia versicolor</i>		C	1
plants	higher dicots	Apocynaceae	<i>Parsonsia lanceolata</i>	northern silkpod	C	1
plants	higher dicots	Apocynaceae	<i>Wrightia pubescens</i>		C	1
plants	higher dicots	Asclepiadaceae	<i>Secamone elliptica</i>		C	1
plants	higher dicots	Asteraceae	<i>Calotis cuneifolia</i>	burr daisy	C	1
plants	higher dicots	Bignoniaceae	<i>Pandorea pandorana</i>	wonga vine	C	1
plants	higher dicots	Boraginaceae	<i>Ehretia membranifolia</i>	weeping koda	C	1
plants	higher dicots	Cactaceae	<i>Opuntia tomentosa</i>	velvety tree pear		1
plants	higher dicots	Caesalpiniaceae	<i>Cassia brewsteri</i>		C	1
plants	higher dicots	Caesalpiniaceae	<i>Senna surattensis subsp. retusa</i>		C	1
plants	higher dicots	Capparaceae	<i>Capparis</i>		C	1
plants	higher dicots	Capparaceae	<i>Capparis shanesiana</i>		C	1
plants	higher dicots	Cucurbitaceae	<i>Diplocyclos palmatus subsp. palmatus</i>		C	1
plants	higher dicots	Erythroxylaceae	<i>Erythroxylum australe</i>	cocaine tree	C	1
plants	higher dicots	Euphorbiaceae	<i>Croton insularis</i>	Queensland cascarilla	C	1
plants	higher dicots	Euphorbiaceae	<i>Acalypha eremorum</i>	soft acalypha	C	1
plants	higher dicots	Euphorbiaceae	<i>Bridelia leichhardtii</i>		C	1
plants	higher dicots	Euphorbiaceae	<i>Bertya pedicellata</i>		R	3
plants	higher dicots	Euphorbiaceae	<i>Claoxylon tenerifolium</i>	Queensland brittlewood	C	1
plants	higher dicots	Fabaceae	<i>Canavalia papuana</i>	wild jack bean	C	1
plants	higher dicots	Fabaceae	<i>Indigofera australis</i>		C	1
plants	higher dicots	Fabaceae	<i>Glycine tomentella</i>	woolly glycine	C	1
plants	higher dicots	Malvaceae	<i>Sida</i>		C	1
plants	higher dicots	Malvaceae	<i>Sida filiformis</i>		C	1
plants	higher dicots	Malvaceae	<i>Abutilon micropetalum</i>		C	1
plants	higher dicots	Malvaceae	<i>Hibiscus krichauffianus</i>		C	1
plants	higher dicots	Malvaceae	<i>Hibiscus divaricatus</i>		C	1
plants	higher dicots	Moraceae	<i>Ficus platypoda</i>		C	1
plants	higher dicots	Myrtaceae	<i>Austromyrtus bidwillii</i>	python tree	C	1
plants	higher dicots	Myrtaceae	<i>Micromyrtus capricornia</i>		C	1
plants	higher dicots	Oleaceae	<i>Notelaea microcarpa</i>		C	1
plants	higher dicots	Oxalidaceae	<i>Oxalis radicata</i>		C	1
plants	higher dicots	Plumbaginaceae	<i>Plumbago zeylanica</i>	native plumbago	C	1

Kingdom	Class	Family	Scientific Name	Common Name	NCA	EPBC	Recs
plants	higher dicots	Rhamnaceae	<i>Alphitonia excelsa</i>	soap tree	C	.	1
plants	higher dicots	Rubiaceae	<i>Spermacoce brachystema</i>		C	.	1
plants	higher dicots	Rutaceae	<i>Flindersia australis</i>	crow's ash	C	.	1
plants	higher dicots	Sapindaceae	<i>Alectryon connatus</i>	grey birds-eye	C	.	1
plants	higher dicots	Sapindaceae	<i>Cupaniopsis anacardioides</i>	tuckeroo	C	.	1
plants	higher dicots	Sapindaceae	<i>Diploglottis macrantha</i>		C	.	1
plants	higher dicots	Solanaceae	<i>Solanum seaforthianum</i>	Brazilian nightshade	.	.	1
plants	higher dicots	Sterculiaceae	<i>Brachychiton australis</i>	broad-leaved bottle tree	C	.	1
plants	higher dicots	Tiliaceae	<i>Grewia latifolia</i>	dysentery plant	C	.	1
plants	higher dicots	Verbenaceae	<i>Lantana camara</i>		.	.	1
plants	higher dicots	Vitaceae	<i>Cayratia clematidea</i>	slender grape	C	.	1
plants	lower dicots	Hernandiaceae	<i>Gyrocarpus americanus</i>		C	.	1
plants	lower dicots	Menispermaceae	<i>Tinospora smilacina</i>	snakevine	C	.	1
plants	monocots	Poaceae	<i>Eragrostis brownii</i>	Brown's lovegrass	C	.	1
plants	monocots	Poaceae	<i>Paspalidium criniforme</i>		C	.	1
plants	monocots	Poaceae	<i>Ancistrachne uncinulata</i>	hooky grass	C	.	1
plants	monocots	Poaceae	<i>Eragrostis megalosperma</i>		C	.	1
plants	monocots	Poaceae	<i>Paraneurachne muelleri</i>		C	.	1
plants		Laxmanniaceae	<i>Lomandra longifolia</i>		C	.	1

CODES

NCA - Indicates the conservation status of each taxon under the *Nature Conservation Act 1992*.

The codes are Presumed Extinct (PE), Endangered (E), Vulnerable (V), Rare (R), Common (C) or Not Protected ().

EPBC - Indicates the conservation status of each taxon under the *Environment Protection and Biodiversity Conservation Act 1999*.

The codes are Conservation Dependent (CD), Critically Endangered (CE), Endangered (E), Extinct (EX), Extinct in the Wild (XW) and Vulnerable (V).

Recs - Indicates the number of records of the species contained within the database for the area searched.

Family_Name	Botanical_Name	Status
Acanthaceae	Brunoniella australis (Cav.) Bremek.	
Acanthaceae	Dipteracanthus australasicus subsp. corynothecus (F.Muell. ex	
Acanthaceae	Harnieria sp. (Lornesleigh E.J.Thompson+ CHA75)	
Acanthaceae	Hypoestes floribunda R.Br. var. floribunda	
Acanthaceae	Hypoestes floribunda R.Br. var. floribunda	
Acanthaceae	Pseuderanthemum	
Acanthaceae	Pseuderanthemum variabile (R.Br.) Radlk.	
Acanthaceae	Pseuderanthemum variabile (R.Br.) Radlk.	
Acanthaceae	Pseuderanthemum variabile (R.Br.) Radlk.	
Acanthaceae	Rostellularia adscendens (R.Br.) R.M.Barker	
Acanthaceae	Rostellularia adscendens (R.Br.) R.M.Barker	
Acanthaceae	Rostellularia adscendens var. hispida (Domin) R.M.Barker	
Aizoaceae	Trianthema triquetra Rottb. ex Willd.	
Aizoaceae	Zaleya galericulata (Melville) H.Eichler	
Amaranthaceae	Achyranthes aspera L.	
Amaranthaceae	Alternanthera denticulata R.Br.	
Amaranthaceae	Alternanthera micrantha (Benth.) Domin	
Amaranthaceae	Alternanthera nana R.Br.	
Amaranthaceae	Amaranthus cochleitepalus Domin	
Anacardiaceae	Euroschinus falcatus var. angustifolius Benth.	
Anacardiaceae	Pleiogonium timorense (DC.) Leenh.	
Apocynaceae	Alyxia ruscifolia R.Br.	
Apocynaceae	Cascabela thevetia (L.) Lippold	*
Apocynaceae	Cascabela thevetia (L.) Lippold	*
Apocynaceae	Parsonsia lanceolata R.Br.	
Apocynaceae	Parsonsia lanceolata R.Br.	
Apocynaceae	Parsonsia lanceolata R.Br.	
Apocynaceae	Parsonsia lanceolata R.Br.	
Apocynaceae	Parsonsia lanceolata R.Br.	
Apocynaceae	Parsonsia latifolia (Benth.) S.T.Blake	
Apocynaceae	Wrightia versicolor S.T.Blake	
Araceae	Typhonium brownii Schott	
Araliaceae	Astrotricha biddulphiana F.Muell.	
Araliaceae	Polyscias elegans (C.Moore & F.Muell.) Harms	
Asclepiadaceae	Gomphocarpus physocarpus E.Mey.	*
Asclepiadaceae	Marsdenia viridiflora R.Br. subsp. viridiflora	
Asclepiadaceae	Sarcostemma viminale subsp. brunonianum (Wight & Arn.)	
Asclepiadaceae	Tylophora erecta F.Muell. ex Benth.	
Asteraceae	Acanthospermum hispidum DC.	*
Asteraceae	Bidens bipinnata L.	*
Asteraceae	Calotis cuneata (F.Muell. ex Benth.) G.L.R.Davis	
Asteraceae	Calotis cuneata (F.Muell. ex Benth.) G.L.R.Davis	
Asteraceae	Calotis cuneifolia R.Br.	
Asteraceae	Calotis dentex R.Br.	
Asteraceae	Calotis squamigera C.T.White	
Asteraceae	Camptracta barbata N.T.Burb.	
Asteraceae	Camptracta barbata N.T.Burb.	
Asteraceae	Carthamus lanatus L.	*
Asteraceae	Centipeda minima (L.) A.Braun & Asch. subsp. minima	
Asteraceae	Chrysocephalum apiculatum (Labill.) Steetz	
Asteraceae	Cirsium vulgare (Savi) Ten.	*
Asteraceae	Conyza sumatrensis (Retz.) E.Walker	*
Asteraceae	Cotula australis (Sieber ex Spreng.) Hook.f.	
Asteraceae	Cyanthillium cinereum (L.) H.Rob.	
Asteraceae	Cyanthillium cinereum (L.) H.Rob.	
Asteraceae	Eclipta prostrata (L.) L.	
Asteraceae	Gamochoeta pensylvanica (Willd.) Cabrera	*
Asteraceae	Gamochoeta pensylvanica (Willd.) Cabrera	*
Asteraceae	Glossocardia bidens (Retz.) Veldkamp	
Asteraceae	Helichrysum glutinosum (Hook.) Benth.	
Asteraceae	Helichrysum lanuginosum A.Cunn. ex DC.	
Asteraceae	Ozothamnus eriocephalus (J.H.Willis) Anderb.	V
Asteraceae	Parthenium hysterophorus L.	*
Asteraceae	Parthenium hysterophorus L.	*
Asteraceae	Parthenium hysterophorus L.	*
Asteraceae	Parthenium hysterophorus L.	*
Asteraceae	Parthenium hysterophorus L.	*
Asteraceae	Parthenium hysterophorus L.	*
Asteraceae	Peripleura hispidula (F.Muell. ex A.Gray) G.L.Nesom var.	
Asteraceae	Pluchea dentex R.Br. ex Benth.	
Asteraceae	Pluchea dentex R.Br. ex Benth.	
Asteraceae	Pterocaulon serrulatum (Montrouz.) Guillaumin var. serrulatum	
Asteraceae	Pterocaulon sphacelatum (Labill.) F.Muell.	
Asteraceae	Pterocaulon sphacelatum (Labill.) F.Muell.	
Asteraceae	Senecio brigalowensis I.Thomps.	
Asteraceae	Senecio brigalowensis I.Thomps.	
Asteraceae	Streptoglossa odora (F.Muell.) Dunlop	
Asteraceae	Tridax procumbens L.	*
Asteraceae	Tridax procumbens L.	*

Asteraceae	Verbesina encelioides (Cav.) Benth. & Hook.f. ex A.Gray	*
Asteraceae	Verbesina encelioides (Cav.) Benth. & Hook.f. ex A.Gray	*
Asteraceae	Wedelia spilanthis F.Muell.	
Asteraceae	Wedelia spilanthis F.Muell.	
Asteraceae	Xanthium spinosum L.	*
Bignoniaceae	Tecoma stans (L.) Juss. ex Kunth	*
Boraginaceae	Ehretia acuminata var. pilosula (F.Muell.) I.M.Johnst.	
Boraginaceae	Ehretia membranifolia R.Br.	
Boraginaceae	Ehretia membranifolia R.Br.	
Boraginaceae	Heliotropium amplexicaule Vahl	*
Boraginaceae	Heliotropium geocharis Domin	
Boraginaceae	Heliotropium indicum L.	*
Boraginaceae	Heliotropium ovalifolium Forssk.	
Boraginaceae	Trichodesma zeylanicum (Burm.f.) R.Br. var. zeylanicum	
Boraginaceae	Trichodesma zeylanicum var. latisepalum F.Muell. ex Benth.	
Brassicaceae	Lepidium virginicum L.	*
Caesalpiniaceae	Barklya syringifolia F.Muell.	
Caesalpiniaceae	Cassia brewsteri (F.Muell.) F.Muell. ex Benth.	
Caesalpiniaceae	Cassia brewsteri (F.Muell.) F.Muell. ex Benth.	
Caesalpiniaceae	Cassia brewsteri (F.Muell.) F.Muell. ex Benth.	
Caesalpiniaceae	Cassia tomentella (Benth.) Domin	
Caesalpiniaceae	Chamaecrista exigua var. minor Pedley	
Caesalpiniaceae	Lysiphyllum hookeri (F.Muell.) Pedley	
Caesalpiniaceae	Lysiphyllum hookeri (F.Muell.) Pedley	
Caesalpiniaceae	Parkinsonia aculeata L.	*
Caesalpiniaceae	Petalostylis labicheoides R.Br.	
Caesalpiniaceae	Petalostylis labicheoides R.Br.	
Caesalpiniaceae	Petalostylis labicheoides R.Br.	
Caesalpiniaceae	Senna artemisioides subsp. coriacea (Benth.) Randell	
Caesalpiniaceae	Senna coronilloides (Benth.) Randell	
Caesalpiniaceae	Senna coronilloides (Benth.) Randell	
Caesalpiniaceae	Senna coronilloides (Benth.) Randell	
Campanulaceae	Pratia concolor (R.Br.) Domin	
Campanulaceae	Wahlenbergia communis Carolin	
Campanulaceae	Wahlenbergia queenslandica Carolin ex P.J.Sm.	
Capparaceae	Apophyllum anomalum F.Muell.	
Capparaceae	Capparis	
Capparaceae	Capparis lasiantha R.Br. ex DC.	
Capparaceae	Capparis lasiantha R.Br. ex DC.	
Capparaceae	Capparis shanesiana F.Muell.	
Capparaceae	Capparis umbonata Lindl.	
Capparaceae	Cleome viscosa L.	
Capparaceae	Cleome viscosa L.	
Caryophyllaceae	Polycarpaea corymbosa var. minor Pedley	
Casuarinaceae	Allocasuarina luehmannii (R.T.Baker) L.A.S.Johnson	
Casuarinaceae	Casuarina cristata Miq.	
Celastraceae	Denhamia oleaster (Lindl.) F.Muell.	
Celastraceae	Denhamia oleaster (Lindl.) F.Muell.	
Celastraceae	Denhamia oleaster (Lindl.) F.Muell.	
Celastraceae	Denhamia oleaster (Lindl.) F.Muell.	
Celastraceae	Denhamia pittosporoides subsp. angustifolia Jessup	
Celastraceae	Elaeodendron australe var. integrifolium (Tratt.) DC.	
Celastraceae	Elaeodendron australe var. integrifolium (Tratt.) DC.	
Celastraceae	Elaeodendron australe Vent. var. australe	
Celastraceae	Elaeodendron australe Vent. var. australe	
Celastraceae	Maytenus cunninghamii (Hook.) Loes.	
Celastraceae	Maytenus cunninghamii (Hook.) Loes.	
Celastraceae	Maytenus cunninghamii (Hook.) Loes.	
Chenopodiaceae	Atriplex lindleyi Moq.	
Chenopodiaceae	Chenopodium auricomiforme Murr & Thell.	
Chenopodiaceae	Enchylaena tomentosa R.Br.	
Chenopodiaceae	Sclerolaena birchii (F.Muell.) Domin	
Chenopodiaceae	Sclerolaena tricuspis (F.Muell.) Ulbr.	
Clusiaceae	Hypericum gramineum G.Forst.	
Combretaceae	Macropteranthes leiocaulis P.I.Forst.	R
Combretaceae	Macropteranthes leiocaulis P.I.Forst.	R
Combretaceae	Macropteranthes leiocaulis P.I.Forst.	R
Combretaceae	Terminalia oblongata F.Muell. subsp. oblongata	
Combretaceae	Terminalia oblongata F.Muell. subsp. oblongata	
Commelinaceae	Cyanotis axillaris (L.) D.Don	
Convolvulaceae	Convolvulus graminetinus R.W.Johnson	
Convolvulaceae	Evolvulus alsinoides (L.) L.	
Convolvulaceae	Evolvulus alsinoides var. villosicalyx Ooststr.	
Convolvulaceae	Ipomoea brownii Roem. & Schult.	
Convolvulaceae	Ipomoea plebeia R.Br.	
Convolvulaceae	Ipomoea plebeia R.Br.	
Convolvulaceae	Ipomoea polymorpha Roem. & Schult.	
Convolvulaceae	Jacquemontia paniculata (Burm.f.) Hallier f.	
Convolvulaceae	Merremia dissecta (Jacq.) Hallier f.	*
Convolvulaceae	Polymeria longifolia Lindl.	

Convolvulaceae	<i>Polymeria pusilla</i> R.Br.	
Cyperaceae	<i>Abildgaardia ovata</i> (Burm.f.) Kral	
Cyperaceae	<i>Abildgaardia vaginata</i> R.Br.	
Cyperaceae	<i>Bulbostylis barbata</i> (Rottb.) C.B.Clarke	
Cyperaceae	<i>Bulbostylis barbata</i> (Rottb.) C.B.Clarke	
Cyperaceae	<i>Cyperus bifax</i> C.B.Clarke	
Cyperaceae	<i>Cyperus concinnus</i> R.Br.	
Cyperaceae	<i>Cyperus concinnus</i> R.Br.	
Cyperaceae	<i>Cyperus difformis</i> L.	
Cyperaceae	<i>Cyperus esculentus</i> L.	*
Cyperaceae	<i>Cyperus exaltatus</i> Retz.	
Cyperaceae	<i>Cyperus fulvus</i> R.Br.	
Cyperaceae	<i>Cyperus fulvus</i> R.Br.	
Cyperaceae	<i>Cyperus gracilis</i> R.Br.	
Cyperaceae	<i>Cyperus gracilis</i> R.Br.	
Cyperaceae	<i>Cyperus leiocaulon</i> Benth.	
Cyperaceae	<i>Cyperus sesquiflorus</i> (Torr.) Mattf. & Kuek.	*
Cyperaceae	<i>Cyperus tuberosus</i> Rottb.	*
Cyperaceae	<i>Eleocharis pallens</i> S.T.Blake	
Cyperaceae	<i>Exocarya scleroides</i> (F.Muell.) Benth.	
Cyperaceae	<i>Fimbristylis microcarya</i> F.Muell.	
Cyperaceae	<i>Gahnia aspera</i> (R.Br.) Spreng.	
Cyperaceae	<i>Lipocarpa microcephala</i> (R.Br.) Kunth	
Cyperaceae	<i>Scleria brownii</i> Kunth	
Ebenaceae	<i>Diospyros pentamera</i> (Woolfs & F.Muell.) F.Muell.	
Elaeocarpaceae	<i>Sloanea langii</i> F.Muell.	
Elaeocarpaceae	<i>Sloanea macbrydei</i> F.Muell.	
Elaeocarpaceae	<i>Sloanea macbrydei</i> F.Muell.	
Erythroxylaceae	<i>Erythroxylum australe</i> F.Muell.	
Erythroxylaceae	<i>Erythroxylum australe</i> F.Muell.	
Euphorbiaceae	<i>Acalypha eremorum</i> Muell.Arg.	
Euphorbiaceae	<i>Acalypha eremorum</i> Muell.Arg.	
Euphorbiaceae	<i>Adriana urticoides</i> (A.Cunn.) Guymer var. <i>urticoides</i>	
Euphorbiaceae	<i>Adriana urticoides</i> (A.Cunn.) Guymer var. <i>urticoides</i>	
Euphorbiaceae	<i>Alchornea ilicifolia</i> (J.Sm.) Muell.Arg.	
Euphorbiaceae	<i>Alchornea ilicifolia</i> (J.Sm.) Muell.Arg.	
Euphorbiaceae	<i>Alchornea thozetiana</i> (Baill.) Baill. ex Benth.	
Euphorbiaceae	<i>Antidesma erostre</i> F.Muell. ex Benth.	
Euphorbiaceae	<i>Baloghia inophylla</i> (G.Forst.) P.S.Green	
Euphorbiaceae	<i>Bertya pedicellata</i> F.Muell.	R
Euphorbiaceae	<i>Bertya pedicellata</i> F.Muell.	R
Euphorbiaceae	<i>Bertya pedicellata</i> F.Muell.	R
Euphorbiaceae	<i>Bertya pedicellata</i> F.Muell.	R
Euphorbiaceae	<i>Breynia oblongifolia</i> (Muell.Arg.) Muell.Arg.	
Euphorbiaceae	<i>Bridelia leichhardtii</i> Baill. ex Muell.Arg.	
Euphorbiaceae	<i>Chamaesyce coghlanii</i> (F.M.Bailey) D.C.Hassall ex P.I.Forst.	
Euphorbiaceae	<i>Chamaesyce drummondii</i> (Boiss.) D.C.Hassall	
Euphorbiaceae	<i>Chamaesyce hirta</i> (L.) Millsp.	*
Euphorbiaceae	<i>Croton insularis</i> Baill.	
Euphorbiaceae	<i>Croton insularis</i> Baill.	
Euphorbiaceae	<i>Croton phebaloides</i> F.Muell. ex Muell.Arg.	
Euphorbiaceae	<i>Croton phebaloides</i> F.Muell. ex Muell.Arg.	
Euphorbiaceae	<i>Croton phebaloides</i> F.Muell. ex Muell.Arg.	
Euphorbiaceae	<i>Drypetes deplanchei</i> (Brongn. & Gris) Merr.	
Euphorbiaceae	<i>Glochidion ferdinandi</i> (Muell.Arg.) F.M.Bailey	
Euphorbiaceae	<i>Jatropha gossypifolia</i> L.	*
Euphorbiaceae	<i>Leptopus decaisnei</i> (Benth.) Pojark. var. <i>decaisnei</i>	
Euphorbiaceae	<i>Petalostigma banksii</i> Britten & S.Moore	
Euphorbiaceae	<i>Petalostigma pubescens</i> Domin	
Euphorbiaceae	<i>Petalostigma pubescens</i> Domin	
Euphorbiaceae	<i>Petalostigma pubescens</i> Domin	
Euphorbiaceae	<i>Petalostigma pubescens</i> Domin	
Euphorbiaceae	<i>Phyllanthus fuernrohrii</i> F.Muell.	
Euphorbiaceae	<i>Phyllanthus fuernrohrii</i> F.Muell.	
Euphorbiaceae	<i>Phyllanthus lacunarius</i> F.Muell.	
Euphorbiaceae	<i>Phyllanthus lamprophyllus</i> Muell.Arg.	
Euphorbiaceae	<i>Phyllanthus maderaspatensis</i> L.	
Euphorbiaceae	<i>Phyllanthus virgatus</i> G.Forst.	
Euphorbiaceae	<i>Phyllanthus virgatus</i> G.Forst.	
Euphorbiaceae	<i>Rockinghamia angustifolia</i> (Benth.) Airy Shaw	
Fabaceae	<i>Alysicarpus aurantiacus</i> Pedley	
Fabaceae	<i>Alysicarpus muelleri</i> Schindl.	
Fabaceae	<i>Alysicarpus muelleri</i> Schindl.	
Fabaceae	<i>Cajanus reticulatus</i> (Dryand.) F.Muell. var. <i>reticulatus</i>	*
Fabaceae	<i>Crotalaria alata</i> Buch.-Ham. ex D.Don	*
Fabaceae	<i>Crotalaria incana</i> L. subsp. <i>incana</i>	*
Fabaceae	<i>Crotalaria laburnifolia</i> L.	
Fabaceae	<i>Crotalaria laburnifolia</i> L.	
Fabaceae	<i>Crotalaria mitchellii</i> Benth. subsp. <i>mitchellii</i>	
Fabaceae	<i>Crotalaria montana</i> Heyne ex Roth	

Fabaceae	Desmodium brachypodum A.Gray	
Fabaceae	Desmodium filiforme Zoll. & Moritzi	
Fabaceae	Desmodium macrocarpum Domin	R
Fabaceae	Desmodium muelleri Benth.	
Fabaceae	Desmodium muelleri Benth.	
Fabaceae	Desmodium muelleri Benth.	
Fabaceae	Desmodium muelleri Benth.	
Fabaceae	Galactia tenuiflora var. lucida Baker	
Fabaceae	Galactia tenuiflora var. lucida Baker	
Fabaceae	Glycine falcata Benth.	
Fabaceae	Glycine tabacina (Labill.) Benth.	
Fabaceae	Glycine tomentella Hayata	
Fabaceae	Hovea longipes Benth.	
Fabaceae	Indigofera australis Willd.	
Fabaceae	Indigofera brevidens Benth.	
Fabaceae	Indigofera hirsuta L.	
Fabaceae	Indigofera linifolia (L.f.) Retz.	
Fabaceae	Indigofera linnaei Ali	
Fabaceae	Rhynchosia minima (L.) DC.	
Fabaceae	Rhynchosia minima var. australis (Benth.) C.Moore	
Fabaceae	Stylosanthes scabra Vogel	*
Fabaceae	Tephrosia astragaloides var. (Belyando Crossing	
Fabaceae	Tephrosia brachyodon var. longifolia (Benth.) Domin	
Fabaceae	Tephrosia filipes Benth. subsp. filipes	
Fabaceae	Tephrosia filipes Benth. subsp. filipes	
Fabaceae	Vigna radiata var. sublobata (Roxb.) Verdc.	
Fabaceae	Vigna radiata var. sublobata (Roxb.) Verdc.	
Fabaceae	Zornia dyctiocarpa DC. var. dyctiocarpa	
Fabaceae	Zornia dyctiocarpa var. filifolia (Domin) S.T.Reynolds &	
Fabaceae	Zornia dyctiocarpa var. filifolia (Domin) S.T.Reynolds &	
Fabaceae	Zornia muelleriana Mohlenbr. subsp. muelleriana	
Fabaceae	Zornia muelleriana Mohlenbr. subsp. muelleriana	
Goodeniaceae	Goodenia glabra R.Br.	
Goodeniaceae	Goodenia sp. (Mt Castletower M.D.Crisp 2753)	
Goodeniaceae	Scaevola spinescens R.Br.	
Grossulariaceae	Abrophyllum ornans (F.Muell.) Hook.f. ex Benth. var. ornans	
Grossulariaceae	Polyosma alangiacea F.Muell.	
Grossulariaceae	Polyosma rhytophloia C.T.White & W.D.Francis	
Haloragaceae	Haloragis aspera Lindl.	
Hypoxidaceae	Hypoxis arillacea R.J.F.Hend.	
Lamiaceae	Basilicum polystachyon (L.) Moench	
Lamiaceae	Basilicum polystachyon (L.) Moench	
Lamiaceae	Leucas lavandulifolia Sm.	*
Lamiaceae	Plectranthus diversus S.T.Blake	
Lamiaceae	Plectranthus graveolens R.Br.	
Lamiaceae	Plectranthus parviflorus Willd.	
Lamiaceae	Prostanthera	
Lamiaceae	Spartothamnella juncea (A.Cunn. ex Walp.) Briq.	
Lamiaceae	Spartothamnella juncea (A.Cunn. ex Walp.) Briq.	
Lamiaceae	Stachys arvensis L.	*
Lamiaceae	Teucrium integrifolium F.Muell.	
Lamiaceae	Teucrium integrifolium F.Muell.	
Lauraceae	Beilschmiedia collina B.Hyland	
Lauraceae	Beilschmiedia collina B.Hyland	
Lauraceae	Beilschmiedia collina B.Hyland	
Lauraceae	Beilschmiedia collina B.Hyland	
Lauraceae	Beilschmiedia collina B.Hyland	
Lauraceae	Cryptocarya angulata C.T.White	
Lauraceae	Cryptocarya densiflora Blume	
Lauraceae	Cryptocarya onoprienkoana B.Hyland	
Laxmanniaceae	Eustrephus latifolius R.Br. ex Ker Gawl.	
Laxmanniaceae	Eustrephus latifolius R.Br. ex Ker Gawl.	
Laxmanniaceae	Lomandra longifolia Labill.	
Laxmanniaceae	Lomandra longifolia Labill.	
Laxmanniaceae	Lomandra longifolia Labill.	
Loranthaceae	Amyema miquelii (Lehm. ex Miq.) Tiegh.	
Loranthaceae	Amyema miquelii (Lehm. ex Miq.) Tiegh.	
Loranthaceae	Amyema quandang (Lindl.) Tiegh.	
Loranthaceae	Dendrophthoe homoplastica (Blakely) Danser	
Malvaceae	Abelmoschus ficulneus (L.) Wight & Arn. ex Wight	
Malvaceae	Abelmoschus ficulneus (L.) Wight & Arn. ex Wight	
Malvaceae	Abutilon	
Malvaceae	Abutilon asiaticum var. australiense (Hochr. ex Britten)	
Malvaceae	Abutilon asiaticum var. australiense (Hochr. ex Britten)	
Malvaceae	Abutilon auritum (Wall. ex Link) Sweet	
Malvaceae	Abutilon fraseri (Hook.) Hook. ex Walp. subsp. fraseri	
Malvaceae	Abutilon fraseri (Hook.) Hook. ex Walp. subsp. fraseri	
Malvaceae	Abutilon micropetalum Benth.	
Malvaceae	Abutilon micropetalum Benth.	

Malvaceae	Abutilon micropetalum Benth.	
Malvaceae	Abutilon oxycarpum forma acutatum Benth.	
Malvaceae	Abutilon oxycarpum var. subsagittatum Domin	
Malvaceae	Abutilon subviscosum Benth.	
Malvaceae	Hibiscus divaricatus Graham	
Malvaceae	Hibiscus divaricatus Graham	
Malvaceae	Hibiscus heterophyllus Vent.	
Malvaceae	Hibiscus krichauffianus F.Muell.	
Malvaceae	Hibiscus sp. (Emerald S.L.Everist 2124)	
Malvaceae	Hibiscus sturtii Hook. var. sturtii	
Malvaceae	Hibiscus sturtii Hook. var. sturtii	
Malvaceae	Malvastrum americanum (L.) Torr. var. americanum	*
Malvaceae	Malvastrum americanum var. stellatum S.R.Hill	
Malvaceae	Sida	
Malvaceae	Sida	
Malvaceae	Sida	
Malvaceae	Sida cordifolia L.	*
Malvaceae	Sida cordifolia L.	*
Malvaceae	Sida cordifolia L.	*
Malvaceae	Sida corrugata Lindl.	
Malvaceae	Sida filiformis A.Cunn.	
Malvaceae	Sida filiformis A.Cunn.	
Malvaceae	Sida filiformis A.Cunn.	
Malvaceae	Sida pleiantha F.Muell. ex Benth.	
Malvaceae	Sida pleiantha F.Muell. ex Benth.	
Malvaceae	Sida rohlenae Domin subsp. rohlenae	
Malvaceae	Sida rohlenae Domin subsp. rohlenae	
Malvaceae	Sida spinosa L.	*
Malvaceae	Sida spinosa L.	*
Malvaceae	Sida spinosa L.	*
Malvaceae	Sida virgata Hook.	
Meliaceae	Toona ciliata M.Roem.	
Menispermaceae	Tinospora smilacina Benth.	
Mimosaceae	Acacia bancroftiorum Maiden	
Mimosaceae	Acacia bancroftiorum Maiden	
Mimosaceae	Acacia bancroftiorum Maiden	
Mimosaceae	Acacia bancroftiorum Maiden	
Mimosaceae	Acacia bancroftiorum Maiden	
Mimosaceae	Acacia bidwillii Benth.	
Mimosaceae	Acacia bidwillii Benth.	
Mimosaceae	Acacia blakei Pedley subsp. blakei	
Mimosaceae	Acacia cambagei R.T.Baker	
Mimosaceae	Acacia conferta A.Cunn. ex Benth.	
Mimosaceae	Acacia conferta A.Cunn. ex Benth.	
Mimosaceae	Acacia cretata Pedley - A.leiocalyx (Domin) Pedley	
Mimosaceae	Acacia cretata Pedley - A.leiocalyx (Domin) Pedley	
Mimosaceae	Acacia decora Rchb.	
Mimosaceae	Acacia fimbriata A.Cunn. ex G.Don	
Mimosaceae	Acacia fimbriata A.Cunn. ex G.Don	
Mimosaceae	Acacia flavescens A.Cunn. ex Benth.	
Mimosaceae	Acacia fodinalis Pedley	
Mimosaceae	Acacia fodinalis Pedley	
Mimosaceae	Acacia fodinalis Pedley	
Mimosaceae	Acacia harpophylla F.Muell. ex Benth.	
Mimosaceae	Acacia hyaloneura Pedley	
Mimosaceae	Acacia hyaloneura Pedley	
Mimosaceae	Acacia julifera Benth. subsp. julifera	
Mimosaceae	Acacia julifera Benth. subsp. julifera	
Mimosaceae	Acacia julifera subsp. curvinervia (Maiden) Pedley	
Mimosaceae	Acacia julifera subsp. curvinervia (Maiden) Pedley	
Mimosaceae	Acacia julifera subsp. curvinervia (Maiden) Pedley	
Mimosaceae	Acacia lazaridis Pedley	
Mimosaceae	Acacia lazaridis Pedley	
Mimosaceae	Acacia ligulata A.Cunn. ex Benth.	
Mimosaceae	Acacia orthocarpa F.Muell.	
Mimosaceae	Acacia oswaldii F.Muell.	
Mimosaceae	Acacia rhodoxylon Maiden	
Mimosaceae	Acacia salicina Lindl.	
Mimosaceae	Acacia shirleyi Maiden	
Mimosaceae	Acacia shirleyi Maiden	
Mimosaceae	Acacia shirleyi Maiden	
Mimosaceae	Acacia shirleyi Maiden	
Mimosaceae	Acacia tenuissima F.Muell.	
Mimosaceae	Acacia tenuissima F.Muell.	
Mimosaceae	Archidendron hendersonii (F. Muell.) I.C.Nielsen	
Mimosaceae	Archidendropsis thozetiana (F. Muell.) I.C.Nielsen	
Mimosaceae	Neptunia gracilis Benth. forma gracilis	
Mimosaceae	Neptunia gracilis Benth. forma gracilis	
Mimosaceae	Neptunia monosperma F.Muell. ex Benth.	
Mimosaceae	Pararchidendron pruinosum (Benth.) I.C.Nielsen var.	

Mimosaceae	<i>Prosopis pallida</i> (Humb. & Bonpl. ex Willd.) Kunth	*
Molluginaceae	<i>Mollugo cerviana</i> (L.) Ser.	
Monimiaceae	<i>Wilkiea macrophylla</i> (A.Cunn.) A.DC.	
Monimiaceae	<i>Wilkiea macrophylla</i> (A.Cunn.) A.DC.	
Moraceae	<i>Ficus opposita</i> Miq.	
Moraceae	<i>Ficus racemosa</i> L. var. <i>racemosa</i>	
Moraceae	<i>Streblus brunonianus</i> (Endl.) F.Muell.	
Myoporaceae	<i>Eremophila debilis</i> (Andrews) Chinnock	
Myoporaceae	<i>Eremophila deserti</i> (A.Cunn. ex Benth.) Chinnock	
Myoporaceae	<i>Myoporum acuminatum</i> R.Br.	
Myoporaceae	<i>Myoporum acuminatum</i> R.Br.	
Myoporaceae	<i>Myoporum montanum</i> R.Br.	
Myoporaceae	<i>Myoporum montanum</i> R.Br.	
Myoporaceae	<i>Myoporum montanum</i> R.Br.	
Myoporaceae	<i>Myoporum montanum</i> R.Br.	
Myrtaceae	<i>Archirhodomyrtus beckeri</i> (F.Muell.) A.J.Scott	
Myrtaceae	<i>Callistemon viminalis</i> (Sol. ex Gaertn.) G.Don ex Loudon	
Myrtaceae	<i>Callistemon viminalis</i> (Sol. ex Gaertn.) G.Don ex Loudon	
Myrtaceae	<i>Corymbia aureola</i> (Brooker & A.R.Bean) K.D.Hill &	
Myrtaceae	<i>Corymbia clarksoniana</i> (D.J.Carr & S.G.M.Carr) K.D.Hill &	
Myrtaceae	<i>Corymbia dallachiana</i> (Benth.) K.D.Hill & L.A.S.Johnson	
Myrtaceae	<i>Corymbia dallachiana</i> (Benth.) K.D.Hill & L.A.S.Johnson	
Myrtaceae	<i>Corymbia dallachiana</i> (Benth.) K.D.Hill & L.A.S.Johnson	
Myrtaceae	<i>Corymbia setosa</i> subsp. <i>pedicellaris</i> K.D.Hill & L.A.S.Johnson	
Myrtaceae	<i>Corymbia tessellaris</i> (F.Muell.) K.D.Hill & L.A.S.Johnson	
Myrtaceae	<i>Eucalyptus coolabah</i> Blakely & Jacobs	
Myrtaceae	<i>Eucalyptus coolabah</i> Blakely & Jacobs	
Myrtaceae	<i>Eucalyptus coolabah</i> Blakely & Jacobs x <i>E.melanophloia</i>	
Myrtaceae	<i>Eucalyptus crebra</i> F.Muell.	
Myrtaceae	<i>Eucalyptus crebra</i> F.Muell. x <i>E.orgadophila</i> Maiden & Blakely	
Myrtaceae	<i>Eucalyptus crebra</i> F.Muell. x <i>E.populnea</i> F.Muell.	
Myrtaceae	<i>Eucalyptus drepanophylla</i> F.Muell. ex Benth.	
Myrtaceae	<i>Eucalyptus drepanophylla</i> F.Muell. ex Benth.	
Myrtaceae	<i>Eucalyptus exserta</i> F.Muell.	
Myrtaceae	<i>Eucalyptus melanophloia</i> F.Muell.	
Myrtaceae	<i>Eucalyptus melanophloia</i> F.Muell.	
Myrtaceae	<i>Eucalyptus persistens</i> L.A.S.Johnson & K.D.Hill	
Myrtaceae	<i>Eucalyptus persistens</i> L.A.S.Johnson & K.D.Hill	
Myrtaceae	<i>Eucalyptus persistens</i> L.A.S.Johnson & K.D.Hill	
Myrtaceae	<i>Eucalyptus platyphylla</i> F.Muell.	
Myrtaceae	<i>Eucalyptus platyphylla</i> F.Muell.	
Myrtaceae	<i>Eucalyptus platyphylla</i> F.Muell. x <i>E.tereticornis</i> Sm.	
Myrtaceae	<i>Eucalyptus platyphylla</i> F.Muell. x <i>E.tereticornis</i> Sm.	
Myrtaceae	<i>Eucalyptus populnea</i> F.Muell.	
Myrtaceae	<i>Eucalyptus populnea</i> F.Muell.	
Myrtaceae	<i>Eucalyptus populnea</i> F.Muell.	
Myrtaceae	<i>Eucalyptus populnea</i> F.Muell.	
Myrtaceae	<i>Eucalyptus raveretiana</i> F.Muell.	V
Myrtaceae	<i>Eucalyptus raveretiana</i> F.Muell.	V
Myrtaceae	<i>Eucalyptus raveretiana</i> F.Muell.	V
Myrtaceae	<i>Eucalyptus raveretiana</i> F.Muell.	V
Myrtaceae	<i>Eucalyptus raveretiana</i> F.Muell.	V
Myrtaceae	<i>Eucalyptus tenuipes</i> (Maiden & Blakely) Blakely & C.T.White	
Myrtaceae	<i>Eucalyptus tereticornis</i> Sm. subsp. <i>tereticornis</i>	
Myrtaceae	<i>Eucalyptus tereticornis</i> Sm. subsp. <i>tereticornis</i>	
Myrtaceae	<i>Eucalyptus tholiformis</i> A.R.Bean & Brooker	
Myrtaceae	<i>Eucalyptus thozetiana</i> F.Muell. ex R.T.Baker	
Myrtaceae	<i>Eucalyptus thozetiana</i> F.Muell. ex R.T.Baker	
Myrtaceae	<i>Eucalyptus thozetiana</i> F.Muell. ex R.T.Baker	
Myrtaceae	<i>Gossia hillii</i> (Benth.) N.Snow & Guymer	
Myrtaceae	<i>Gossia hillii</i> (Benth.) N.Snow & Guymer	
Myrtaceae	<i>Gossia hillii</i> (Benth.) N.Snow & Guymer	
Myrtaceae	<i>Lophostemon confertus</i> (R.Br.) Peter G.Wilson & J.T.Waterh.	
Myrtaceae	<i>Lophostemon grandiflorus</i> (Benth.) Peter G.Wilson &	
Myrtaceae	<i>Lophostemon grandiflorus</i> (Benth.) Peter G.Wilson &	
Myrtaceae	<i>Melaleuca bracteata</i> F.Muell.	
Myrtaceae	<i>Melaleuca fluviatilis</i> Barlow	
Myrtaceae	<i>Melaleuca fluviatilis</i> Barlow	
Myrtaceae	<i>Melaleuca nervosa</i> (Lindl.) Cheel subsp. <i>nervosa</i>	
Myrtaceae	<i>Melaleuca nervosa</i> (Lindl.) Cheel subsp. <i>nervosa</i>	
Myrtaceae	<i>Melaleuca trichostachya</i> Lindl.	
Myrtaceae	<i>Micromyrtus capricornia</i> A.R.Bean	
Myrtaceae	<i>Rhodamnia costata</i> A.J.Scott	
Myrtaceae	<i>Rhodomyrtus trineura</i> (F.Muell.) F.Muell. ex Benth. subsp.	
Myrtaceae	<i>Rhodomyrtus trineura</i> (F.Muell.) F.Muell. ex Benth. subsp.	
Myrtaceae	<i>Rhodomyrtus trineura</i> (F.Muell.) F.Muell. ex Benth. subsp.	
Myrtaceae	<i>Syzygium erythroxylum</i> (S.Moore) B.Hyland	
Nyctaginaceae	<i>Boerhavia schomburgkiana</i> Oliv.	
Oleaceae	<i>Jasminum simplicifolium</i> subsp. <i>australiense</i> P.S.Green	
Oleaceae	<i>Notelaea microcarpa</i> R.Br. var. <i>microcarpa</i>	

Oleaceae	Notelaea microcarpa R.Br. var. microcarpa	
Oleaceae	Olea paniculata R.Br.	
Onagraceae	Ludwigia	
Onagraceae	Ludwigia peploides subsp. montevidensis (Spreng.)	
Orchidaceae	Bulbophyllum schillerianum Rchb.f.	
Orchidaceae	Caladenia carnea R.Br. var. carnea	
Orchidaceae	Cymbidium canaliculatum R.Br.	
Orchidaceae	Habenaria propinquoior Rchb.f.	
Orchidaceae	Thelymitra pauciflora R.Br.	
Orchidaceae	Thelymitra pauciflora R.Br.	
Oxalidaceae	Oxalis radicata A.Rich.	
Papaveraceae	Argemone ochroleuca Sweet subsp. ochroleuca	*
Pedaliaceae	Martynia annua L.	*
Pittosporaceae	Bursaria incana Lindl.	
Pittosporaceae	Bursaria incana Lindl.	
Pittosporaceae	Pittosporum spinescens (F.Muell.) L.W.Cayzer, Crisp &	
Poaceae	Ancistrachne uncinulata (R.Br.) S.T.Blake	
Poaceae	Ancistrachne uncinulata (R.Br.) S.T.Blake	
Poaceae	Ancistrachne uncinulata (R.Br.) S.T.Blake	
Poaceae	Ancistrachne uncinulata (R.Br.) S.T.Blake	
Poaceae	Aristida calycina R.Br. var. calycina	
Poaceae	Aristida calycina R.Br. var. calycina	
Poaceae	Aristida calycina R.Br. var. calycina	
Poaceae	Aristida calycina R.Br. var. calycina	
Poaceae	Aristida gracilipes (Domin) Henrard	
Poaceae	Aristida holathera Domin var. holathera	
Poaceae	Aristida holathera Domin var. holathera	
Poaceae	Aristida holathera Domin var. holathera	
Poaceae	Aristida holathera Domin var. holathera	
Poaceae	Aristida jerichoensis var. subspinulifera Henrard	
Poaceae	Aristida jerichoensis var. subspinulifera Henrard	
Poaceae	Aristida jerichoensis var. subspinulifera Henrard	
Poaceae	Aristida jerichoensis var. subspinulifera Henrard	
Poaceae	Aristida latifolia Domin	
Poaceae	Aristida leptopoda Benth.	
Poaceae	Aristida lignosa B.K.Simon	
Poaceae	Aristida perniciosa Domin	
Poaceae	Aristida personata Henrard	
Poaceae	Aristida personata Henrard	
Poaceae	Aristida personata Henrard	
Poaceae	Arundinella nepalensis Trin.	
Poaceae	Bothriochloa bladhii (Retz.) S.T.Blake subsp. bladhii	
Poaceae	Bothriochloa bladhii (Retz.) S.T.Blake subsp. bladhii	
Poaceae	Bothriochloa bladhii (Retz.) S.T.Blake subsp. bladhii	
Poaceae	Bothriochloa decipiens (Hack.) C.E.Hubb. var. decipiens	
Poaceae	Bothriochloa decipiens (Hack.) C.E.Hubb. var. decipiens	
Poaceae	Bothriochloa decipiens var. cloncurrans (Domin) C.E.Hubb.	
Poaceae	Bothriochloa decipiens var. cloncurrans (Domin) C.E.Hubb.	
Poaceae	Bothriochloa erianthoides (F.Muell.) C.E.Hubb.	
Poaceae	Bothriochloa erianthoides (F.Muell.) C.E.Hubb.	
Poaceae	Bothriochloa ewartiana (Domin) C.E.Hubb.	
Poaceae	Brachyachne convergens (F.Muell.) Stapf	
Poaceae	Calyptochloa gracillima C.E.Hubb.	
Poaceae	Chionachne hubbardiana Henrard	
Poaceae	Chionachne hubbardiana Henrard	
Poaceae	Chloris divaricata R.Br. var. divaricata	
Poaceae	Chloris divaricata R.Br. var. divaricata	
Poaceae	Chloris divaricata R.Br. var. divaricata	
Poaceae	Chloris divaricata R.Br. var. divaricata	
Poaceae	Chloris inflata Link	*
Poaceae	Chloris ventricosa R.Br.	
Poaceae	Chloris ventricosa R.Br.	
Poaceae	Chloris ventricosa R.Br.	
Poaceae	Chloris virgata Sw.	*
Poaceae	Chrysopogon fallax S.T.Blake	
Poaceae	Chrysopogon fallax S.T.Blake	
Poaceae	Chrysopogon fallax S.T.Blake	
Poaceae	Chrysopogon fallax S.T.Blake	
Poaceae	Chrysopogon fallax S.T.Blake	
Poaceae	Chrysopogon fallax S.T.Blake	
Poaceae	Cleistochloa subjuncea C.E.Hubb.	
Poaceae	Cymbopogon queenslandicus S.T.Blake	
Poaceae	Cymbopogon refractus (R.Br.) A.Camus	
Poaceae	Dactyloctenium radulans (R.Br.) P.Beauv.	
Poaceae	Dichanthium annulatum (Forssk.) Stapf	*
Poaceae	Dichanthium aristatum (Poir.) C.E.Hubb.	*
Poaceae	Dichanthium queenslandicum B.K.Simon	V
Poaceae	Dichanthium queenslandicum B.K.Simon	V
Poaceae	Dichanthium queenslandicum B.K.Simon	V
Poaceae	Dichanthium sericeum (R.Br.) A.Camus subsp. sericeum	

Poaceae	Dichanthium sericeum (R.Br.) A.Camus subsp. sericeum	
Poaceae	Dichanthium sericeum (R.Br.) A.Camus subsp. sericeum	
Poaceae	Dichanthium sericeum (R.Br.) A.Camus subsp. sericeum	
Poaceae	Dichanthium sericeum (R.Br.) A.Camus subsp. sericeum	
Poaceae	Dichanthium sericeum (R.Br.) A.Camus subsp. sericeum	
Poaceae	Dichanthium setosum S.T.Blake	R
Poaceae	Dichanthium setosum S.T.Blake	R
Poaceae	Dichanthium tenue (R.Br.) A.Camus	
Poaceae	Digitaria bicornis (Lam.) Roem. & Schult.	
Poaceae	Digitaria breviglumis (Domin) Henrard	
Poaceae	Digitaria brownii (Roem. & Schult.) Hughes	
Poaceae	Digitaria ciliaris (Retz.) Koeler	*
Poaceae	Digitaria divaricatissima (R.Br.) Hughes	
Poaceae	Digitaria eriantha Steud. cv. Pangola	
Poaceae	Digitaria porrecta S.T.Blake	R
Poaceae	Digitaria violascens Link	*
Poaceae	Echinochloa colona (L.) Link	*
Poaceae	Echinochloa colona (L.) Link	*
Poaceae	Echinochloa colona (L.) Link	*
Poaceae	Echinochloa colona (L.) Link	*
Poaceae	Echinochloa inundata P.W.Michael & Vickery	
Poaceae	Echinochloa telmatophila P.W.Michael & Vickery	
Poaceae	Echinochloa turneriana (Domin) J.M.Black	
Poaceae	Eleusine indica (L.) Gaertn.	*
Poaceae	Elionurus citreus (R.Br.) Munro ex Benth.	
Poaceae	Elytrophorus spicatus (Willd.) E.G.Camus & A.Camus	
Poaceae	Enneapogon intermedius N.T.Burb.	
Poaceae	Enneapogon intermedius N.T.Burb.	
Poaceae	Enneapogon intermedius N.T.Burb.	
Poaceae	Enneapogon lindleyanus (Domin) C.E.Hubb.	
Poaceae	Enneapogon nigricans (R.Br.) P.Beauv.	
Poaceae	Enneapogon robustissimus (Domin) N.T.Burb.	
Poaceae	Enneapogon truncatus Kakudidi	
Poaceae	Enteropogon ramosus B.K.Simon	
Poaceae	Enteropogon ramosus B.K.Simon	
Poaceae	Enteropogon unispiceus (F.Muell.) Clayton	
Poaceae	Eragrostis alveiformis Lazarides	
Poaceae	Eragrostis brownii (Kunth) Nees ex Wight	
Poaceae	Eragrostis brownii (Kunth) Nees ex Wight	
Poaceae	Eragrostis brownii (Kunth) Nees ex Wight	
Poaceae	Eragrostis elongata (Willd.) J.Jacq.	
Poaceae	Eragrostis elongata (Willd.) J.Jacq.	
Poaceae	Eragrostis elongata (Willd.) J.Jacq.	
Poaceae	Eragrostis exigua Lazarides	
Poaceae	Eragrostis falcata (Gaudich.) Gaudich. ex Steud.	
Poaceae	Eragrostis lacunaria F.Muell. ex Benth.	
Poaceae	Eragrostis lacunaria F.Muell. ex Benth.	
Poaceae	Eragrostis leptostachya (R.Br.) Steud.	
Poaceae	Eragrostis leptostachya (R.Br.) Steud.	
Poaceae	Eragrostis leptostachya (R.Br.) Steud.	
Poaceae	Eragrostis longipedicellata B.K.Simon	
Poaceae	Eragrostis longipedicellata B.K.Simon	
Poaceae	Eragrostis megalosperma F.Muell. ex Benth.	
Poaceae	Eragrostis megalosperma F.Muell. ex Benth.	
Poaceae	Eragrostis sororia Domin	
Poaceae	Eragrostis sororia Domin	
Poaceae	Eragrostis spartinoides Steud.	
Poaceae	Eragrostis spartinoides Steud.	
Poaceae	Eragrostis spartinoides Steud.	
Poaceae	Eragrostis spartinoides Steud.	
Poaceae	Eragrostis speciosa (Roem. & Schult.) Steud.	
Poaceae	Eragrostis speciosa (Roem. & Schult.) Steud.	
Poaceae	Eragrostis tenellula (Kunth) Steud.	
Poaceae	Eragrostis tenuifolia (A.Rich.) Hochst. ex Steud.	*
Poaceae	Eriachne mucronata forma (Alpha C.E.Hubbard 7882)	
Poaceae	Eriachne mucronata forma (Alpha C.E.Hubbard 7882)	
Poaceae	Eriachne mucronata forma (Alpha C.E.Hubbard 7882)	
Poaceae	Eriachne obtusa R.Br.	
Poaceae	Eriachne rara R.Br.	
Poaceae	Eriachne rara R.Br.	
Poaceae	Eriochloa crebra S.T.Blake	
Poaceae	Eriochloa crebra S.T.Blake	
Poaceae	Eriochloa procera (Retz.) C.E.Hubb.	
Poaceae	Eriochloa pseudoacrotricha (Stapf ex Thell.) J.M.Black	
Poaceae	Eriochloa pseudoacrotricha (Stapf ex Thell.) J.M.Black	
Poaceae	Eriochloa pseudoacrotricha (Stapf ex Thell.) J.M.Black	
Poaceae	Eulalia aurea (Bory) Kunth	
Poaceae	Eulalia aurea (Bory) Kunth	
Poaceae	Heteropogon contortus (L.) P.Beauv. ex Roem. & Schult.	
Poaceae	Heteropogon triticeus (R.Br.) Stapf	

Poaceae	Hyparrhenia rufa (Nees) Stapf subsp. rufa	*
Poaceae	Iseilema macratherum Domin	
Poaceae	Iseilema vaginiflorum Domin	
Poaceae	Iseilema vaginiflorum Domin	
Poaceae	Iseilema vaginiflorum Domin	
Poaceae	Iseilema vaginiflorum Domin	
Poaceae	Iseilema vaginiflorum Domin	
Poaceae	Leptochloa decipiens subsp. asthenes (Roem. & Schult.)	
Poaceae	Leptochloa decipiens subsp. peacockii (Maiden & Betche)	
Poaceae	Leptochloa digitata (R.Br.) Domin	
Poaceae	Leptochloa digitata (R.Br.) Domin	
Poaceae	Leptochloa ligulata Lazarides	
Poaceae	Megathyrsus maximus var. coloratus (C.T.White) B.K.Simon	*
Poaceae	Moorochloa eruciformis (Sm.) Veldkamp	*
Poaceae	Ophiuros exaltatus (L.) Kuntze	
Poaceae	Ophiuros exaltatus (L.) Kuntze	
Poaceae	Oxychloris scariosa (F.Muell.) Lazarides	
Poaceae	Panicum buncei F.Muell. ex Benth.	
Poaceae	Panicum decompositum R.Br. var. decompositum	
Poaceae	Panicum effusum R.Br.	
Poaceae	Panicum paludosum Roxb.	
Poaceae	Panicum simile Domin	
Poaceae	Panicum simile Domin	
Poaceae	Paspalidium albobillosum S.T.Blake	
Poaceae	Paspalidium albobillosum S.T.Blake	
Poaceae	Paspalidium caespitosum C.E.Hubb.	
Poaceae	Paspalidium caespitosum C.E.Hubb.	
Poaceae	Paspalidium caespitosum C.E.Hubb.	
Poaceae	Paspalidium criniforme S.T.Blake	
Poaceae	Paspalidium criniforme S.T.Blake	
Poaceae	Paspalidium globoideum (Domin) Hughes	
Poaceae	Paspalidium gracile (R.Br.) Hughes	
Poaceae	Paspalidium gracile (R.Br.) Hughes	
Poaceae	Paspalidium gracile (R.Br.) Hughes	
Poaceae	Paspalum conjugatum Bergius	*
Poaceae	Pseudoraphis spinescens (R.Br.) Vickery	
Poaceae	Sarga plumosum (R.Br.) Spangler	
Poaceae	Schizachyrium fragile (R.Br.) A.Camus	
Poaceae	Setaria australiensis (Scribn. & Merr.) Vickery	
Poaceae	Setaria palmifolia (J.Koenig) Stapf	*
Poaceae	Setaria pumila subsp. pallidifusca (Schumach.) B.K.Simon	*
Poaceae	Setaria sphacelata var. sericea (Stapf) Clayton	*
Poaceae	Sorghum bicolor (L.) Moench	*
Poaceae	Sorghum x alnum Parodi	*
Poaceae	Sporobolus australasicus Domin	
Poaceae	Sporobolus australasicus Domin	
Poaceae	Sporobolus caroli Mez	
Poaceae	Sporobolus elongatus R.Br.	
Poaceae	Sporobolus elongatus R.Br.	
Poaceae	Sporobolus fertilis (Steud.) Clayton	*
Poaceae	Sporobolus fertilis (Steud.) Clayton	*
Poaceae	Sporobolus fertilis (Steud.) Clayton	*
Poaceae	Sporobolus fertilis (Steud.) Clayton	*
Poaceae	Sporobolus jacquemontii Kunth	*
Poaceae	Sporobolus jacquemontii Kunth	*
Poaceae	Sporobolus mitchellii (Trin.) C.E.Hubb. ex S.T.Blake	
Poaceae	Sporobolus scabridus S.T.Blake	
Poaceae	Sporobolus scabridus S.T.Blake	
Poaceae	Sporobolus sessilis B.K.Simon	
Poaceae	Thellungia advena Stapf ex Probst	
Poaceae	Thellungia advena Stapf ex Probst	
Poaceae	Themeda avenacea (F.Muell.) Maiden & Betche	
Poaceae	Themeda quadrivalvis (L.) Kuntze	*
Poaceae	Tragus australianus S.T.Blake	
Poaceae	Triraphis mollis R.Br.	
Poaceae	Urochloa foliosa (R.Br.) R.D.Webster	
Poaceae	Vacoparis laxiflorum (F.M.Bailey) Spangler	
Poaceae	Whalleya subxerophila (Domin) K.E.Wills & J.J.Bruhl	
Poaceae	Whalleya subxerophila (Domin) K.E.Wills & J.J.Bruhl	
Poaceae	Whiteochloa airoides (R.Br.) Lazarides	
Polygonaceae	Persicaria lapathifolia (L.) Gray	
Polygonaceae	Polygonum plebeium R.Br.	
Portulacaceae	Portulaca	
Portulacaceae	Portulaca	
Portulacaceae	Portulaca sp. (Blackall G.Le Gros AQ101965)	
Potamogetonaceae	Potamogeton javanicus Hassk.	
Proteaceae	Grevillea decora Domin subsp. decora	
Proteaceae	Grevillea parallela Knight	
Proteaceae	Grevillea parallela Knight	
Proteaceae	Grevillea pteridifolia Knight	

Proteaceae	Grevillea sessilis C.T.White & W.D.Francis	
Proteaceae	Hakea lorea (R.Br.) R.Br. subsp. lorea	
Proteaceae	Hakea lorea (R.Br.) R.Br. subsp. lorea	
Proteaceae	Hakea lorea (R.Br.) R.Br. subsp. lorea	
Proteaceae	Persoonia amaliae Domin	R
Proteaceae	Persoonia amaliae Domin	R
Proteaceae	Persoonia falcata R.Br.	
Rhamnaceae	Alphitonia excelsa (A.Cunn. ex Fenzl) Reissek ex Benth.	
Rhamnaceae	Ventilago viminalis Hook.	
Rhamnaceae	Ventilago viminalis Hook.	
Rhamnaceae	Ventilago viminalis Hook.	
Rhamnaceae	Ventilago viminalis Hook.	
Rubiaceae	Antirhea putaminosa (F.Muell.) F.M.Bailey	
Rubiaceae	Asperula conferta Hook.f.	
Rubiaceae	Larsenaikia ochreatea (F.Muell.) Tirveng.	
Rubiaceae	Larsenaikia ochreatea (F.Muell.) Tirveng.	
Rubiaceae	Oldenlandia coerulescens (F.Muell.) F.Muell.	
Rubiaceae	Oldenlandia mitrasacmoides subsp. trachymenoides (F.Muell.)	
Rubiaceae	Pavetta australiensis Bremek.	
Rubiaceae	Pogonolobus reticulatus F.Muell.	
Rubiaceae	Psydrax longipes S.T.Reynolds & R.J.F.Hend.	
Rubiaceae	Psydrax odorata (G.Forst.) A.C.Sm. & S.P.Darwin	
Rubiaceae	Psydrax odorata (G.Forst.) A.C.Sm. & S.P.Darwin	
Rubiaceae	Psydrax odorata subsp. australiana S.T.Reynolds &	
Rubiaceae	Psydrax saligna S.T.Reynolds & R.J.F.Hend. forma saligna	
Rubiaceae	Richardia brasiliensis Gomes	*
Rubiaceae	Spermacoce	
Rubiaceae	Spermacoce brachystema R.Br. ex Benth.	
Rubiaceae	Timonius timon (Spreng.) Merr. var. timon	
Rubiaceae	Triflorensia ixoroides (F.Muell.) S.T.Reynolds	
Rubiaceae	Triflorensia ixoroides (F.Muell.) S.T.Reynolds	
Rutaceae	Acronychia laevis J.R.Forst. & G.Forst.	
Rutaceae	Citrus glauca (Lindl.) Burkill	
Rutaceae	Citrus glauca (Lindl.) Burkill	
Rutaceae	Citrus glauca (Lindl.) Burkill	
Rutaceae	Flindersia australis R.Br.	
Rutaceae	Flindersia dissosperma (F.Muell.) Domin	
Rutaceae	Flindersia dissosperma (F.Muell.) Domin	
Rutaceae	Flindersia dissosperma (F.Muell.) Domin	
Rutaceae	Flindersia schottiana F.Muell.	
Rutaceae	Geijera salicifolia Schott	
Rutaceae	Geijera salicifolia Schott	
Rutaceae	Geijera salicifolia Schott	
Rutaceae	Geijera salicifolia Schott	
Rutaceae	Geijera salicifolia Schott	
Rutaceae	Geijera salicifolia Schott	
Rutaceae	Geijera salicifolia Schott	
Rutaceae	Geijera salicifolia Schott	
Rutaceae	Geijera salicifolia Schott	
Rutaceae	Murraya ovatifoliolata (Engl.) Domin	
Santalaceae	Exocarpos latifolius R.Br.	
Santalaceae	Exocarpos latifolius R.Br.	
Sapindaceae	Alectryon diversifolius (F.Muell.) S.T.Reynolds	
Sapindaceae	Alectryon diversifolius (F.Muell.) S.T.Reynolds	
Sapindaceae	Alectryon diversifolius (F.Muell.) S.T.Reynolds	
Sapindaceae	Alectryon oleifolius subsp. elongatus S.T.Reynolds	
Sapindaceae	Alectryon oleifolius subsp. elongatus S.T.Reynolds	
Sapindaceae	Alectryon oleifolius subsp. elongatus S.T.Reynolds	
Sapindaceae	Arytera divaricata F.Muell.	
Sapindaceae	Arytera divaricata F.Muell.	
Sapindaceae	Arytera divaricata F.Muell.	
Sapindaceae	Atalaya hemiglauca (F.Muell.) F.Muell. ex Benth.	
Sapindaceae	Atalaya hemiglauca (F.Muell.) F.Muell. ex Benth.	
Sapindaceae	Atalaya hemiglauca (F.Muell.) F.Muell. ex Benth.	
Sapindaceae	Atalaya hemiglauca (F.Muell.) F.Muell. ex Benth.	
Sapindaceae	Cardiospermum halicacabum L. var. halicacabum	*
Sapindaceae	Cardiospermum halicacabum L. var. halicacabum	*
Sapindaceae	Diploglottis obovata S.T.Reynolds	
Sapindaceae	Dodonaea stenophylla F.Muell.	
Sapindaceae	Dodonaea viscosa subsp. burmanniana (DC.) J.G.West	
Sapindaceae	Guioa semiglauca (F.Muell.) Radlk.	
Sapindaceae	Harpullia hillii F.Muell.	
Sapindaceae	Jagera pseudorhus (A.Rich.) Radlk. var. pseudorhus	
Sapindaceae	Mischarytera lautereriana (F.M.Bailey) H.Turner	
Sapindaceae	Mischarytera lautereriana (F.M.Bailey) H.Turner	
Sapindaceae	Mischarytera lautereriana (F.M.Bailey) H.Turner	
Sapindaceae	Mischarytera lautereriana (F.M.Bailey) H.Turner	
Sapindaceae	Sarcopteryx martyana (F.Muell.) Radlk.	
Sapotaceae	Niemeyera prunifera (F.Muell.) F.Muell.	
Sapotaceae	Niemeyera prunifera (F.Muell.) F.Muell.	

Sapotaceae	Pouteria cotinifolia var. pubescens (P.Royen) Jessup	
Sapotaceae	Pouteria myrsinodendron (F.Muell.) Jessup	
Sapotaceae	Pouteria papyracea (P.Royen) Baehni	
Sapotaceae	Pouteria pohlmiana (F.Muell.) Baehni	
Sapotaceae	Pouteria pohlmiana var. (Gilbert River C.T.White 1409)	
Sapotaceae	Pouteria queenslandica (P.Royen) Jessup	
Sapotaceae	Pouteria queenslandica (P.Royen) Jessup	
Sapotaceae	Pouteria queenslandica (P.Royen) Jessup	
Scrophulariaceae	Gratiola pedunculata R.Br.	
Scrophulariaceae	Mecardonia procumbens (Mill.) Small	*
Scrophulariaceae	Mecardonia procumbens (Mill.) Small	*
Scrophulariaceae	Mimulus gracilis R.Br.	
Scrophulariaceae	Scoparia dulcis L.	*
Scrophulariaceae	Scoparia dulcis L.	*
Scrophulariaceae	Stemodia glabella W.R.Barker	
Scrophulariaceae	Stemodia glabella W.R.Barker	
Simaroubaceae	Quassia sp. (Dam Creek T.S.Ryan 1006)	
Smilacaceae	Ripogonum album R.Br.	
Smilacaceae	Ripogonum brevifolium Conran & Clifford	
Smilacaceae	Smilax australis R.Br.	
Smilacaceae	Smilax glycyphylla Sm.	
Solanaceae	Datura stramonium L.	*
Solanaceae	Solanum adenophorum F.Muell.	E
Solanaceae	Solanum ellipticum R.Br.	
Solanaceae	Solanum ellipticum R.Br.	
Solanaceae	Solanum esuriale Lindl.	
Solanaceae	Solanum furfuraceum R.Br.	
Solanaceae	Solanum galbinum A.R.Bean	
Solanaceae	Solanum parvifolium R.Br. subsp. parvifolium	
Solanaceae	Solanum parvifolium R.Br. subsp. parvifolium	
Solanaceae	Solanum seaforthianum Andrews	*
Solanaceae	Solanum torvum Sw.	*
Sterculiaceae	Brachychiton australis (Schott & Endl.) A.Terracc.	
Sterculiaceae	Brachychiton populneus subsp. trilobus Guymer	
Sterculiaceae	Hannafordia shanesii F.Muell.	
Sterculiaceae	Keraudrenia hookeriana Walp.	
Sterculiaceae	Keraudrenia hookeriana Walp.	
Sterculiaceae	Keraudrenia hookeriana Walp.	
Sterculiaceae	Melhania oblongifolia F.Muell.	
Sterculiaceae	Melhania oblongifolia F.Muell.	
Sterculiaceae	Melochia pyramidata L.	
Sterculiaceae	Waltheria indica L.	
Sterculiaceae	Waltheria indica L.	
Thymelaeaceae	Pimelea haematostachya F.Muell.	
Thymelaeaceae	Thecanthes cornucopiae (Vahl) Wikstr.	
Tiliaceae	Corchorus trilocularis L.	
Tiliaceae	Grewia latifolia F.Muell. ex Benth.	
Tiliaceae	Grewia retusifolia Kurz	
Tiliaceae	Triumfetta rhomboidea Jacq.	*
Ulmaceae	Aphananthe philippinensis Planch.	
Ulmaceae	Trema tomentosa (Roxb.) Hara var. tomentosa	
Ulmaceae	Trema tomentosa (Roxb.) Hara var. tomentosa	
Ulmaceae	Trema tomentosa var. viridis (Planch.) Hewson	
Ulmaceae	Trema tomentosa var. viridis (Planch.) Hewson	
Violaceae	Hybanthus enneaspermus (L.) F.Muell.	
Violaceae	Hybanthus enneaspermus (L.) F.Muell.	
Violaceae	Hybanthus stellarioides (Domin) P.I.Forst.	
Viscaceae	Viscum articulatum Burm.f.	
Vitaceae	Tetrastigma nitens (F.Muell.) Planch.	
Zannichelliaceae	Lepilaena bilocularis Kirk	
Zygophyllaceae	Roepera apiculata (F.Muell.) Beier & Thulin	
Zygophyllaceae	Tribulus micrococcus Domin	
Dicranaceae	Campylopus pyriformis (Schultz) Brid.	
Parmeliaceae	Parmotrema poolii (C.W.Dodge) Krog & Swinscow	
Physciaceae	Heterodermia comosa (Eschw.) Follman & Redon	
Physciaceae	Heterodermia leucomela (L.) Poelt	
Physciaceae	Physcia crispa Nyl.	
Physciaceae	Physcia jackii Moberg	
Physciaceae	Pyxine desudans Kalb	
Ramalinaceae	Ramalina celastris (Spreng.) Krog & Swinscow subsp. celastris	
Ramalinaceae	Ramalina inflata Hook.f. & Taylor	
Ramalinaceae	Ramalina peruviana Ach.	
Adiantaceae	Cheilanthes distans (R.Br.) Mett.	
Dennstaedtiaceae	Histiopteris incisa (Thunb.) J.Sm.	
Lomariopsidaceae	Teratophyllum brightiae (F.Muell.) Holttum	
Marsileaceae	Marsilea exarata A.Braun	

* = Introduced but considered naturalised

Class	Family	Genus	Species	Location
Frogs	MYOBATRACHIDAE	Limnodynastes	ornatus	Walker Ck., Nebo
Frogs	MYOBATRACHIDAE	Limnodynastes	ornatus	Walker Ck, Nebo
Frogs	MYOBATRACHIDAE	Limnodynastes	ornatus	Walker Ck, Nebo
Frogs	MYOBATRACHIDAE	Limnodynastes	ornatus	Walker Ck, Nebo
Frogs	MYOBATRACHIDAE	Limnodynastes	ornatus	Moranbah, 6km S
Frogs	MYOBATRACHIDAE	Limnodynastes	ornatus	Moranbah, 6kms S
Frogs	MYOBATRACHIDAE	Limnodynastes	ornatus	Moranbah, 5km S
Frogs	MYOBATRACHIDAE	Limnodynastes	tasmaniensis	Walker Ck, Nebo
Frogs	MYOBATRACHIDAE	Limnodynastes	tasmaniensis	Walker Ck, Nebo
Frogs	MYOBATRACHIDAE	Notaden	bennettii	Moranbah, 5km S
Frogs	MYOBATRACHIDAE	Notaden	bennettii	Moranbah, 6kms S
Frogs	HYLIDAE	Cyclorana	alboguttata	Walker Ck, Nebo
Frogs	HYLIDAE	Cyclorana	alboguttata	Walker Ck, Nebo
Frogs	HYLIDAE	Cyclorana	alboguttata	Walker Ck, Nebo
Frogs	HYLIDAE	Cyclorana	alboguttata	BHP S Walker Ck Coal Mine, 40km W Nebo
Frogs	HYLIDAE	Cyclorana	brevipes	Walker Ck, Nebo
Frogs	HYLIDAE	Cyclorana	brevipes	Walker Ck, Nebo
Frogs	HYLIDAE	Cyclorana	brevipes	Walker Ck, Nebo
Frogs	HYLIDAE	Cyclorana	brevipes	Walker Ck, Nebo
Frogs	HYLIDAE	Cyclorana	brevipes	Walker Ck, Nebo
Frogs	HYLIDAE	Cyclorana	brevipes	Walker Ck, Nebo
Frogs	HYLIDAE	Cyclorana	brevipes	Moranbah, 6km S
Frogs	HYLIDAE	Cyclorana	novaeollandiae	Walker Ck, Nebo
Frogs	HYLIDAE	Cyclorana	novaeollandiae	Walker Ck, Nebo
Frogs	HYLIDAE	Cyclorana	novaeollandiae	Walker Ck, Nebo
Frogs	HYLIDAE	Cyclorana	novaeollandiae	BHP S Walker Ck Coal Mine, 40km NW Nebo
Frogs	HYLIDAE	Litoria	caerulea	Dipperu NP
Frogs	HYLIDAE	Litoria	caerulea	Dipperu NP
Frogs	HYLIDAE	Litoria	caerulea	BHP S Walker Ck Coal Mine, 40km W Nebo
Frogs	HYLIDAE	Litoria	inermis	Seven Mile Ck, Homevale, Carrinyah boundary, Nebo
Frogs	HYLIDAE	Litoria	inermis	Walker Ck, Nebo
Frogs	HYLIDAE	Litoria	inermis	BHP S Walker Ck Coal Mine, 40km NW Nebo
Frogs	HYLIDAE	Litoria	latopalmata	Dipperu NP
Frogs	HYLIDAE	Litoria	rubella	Dipperu NP
Frogs	HYLIDAE	Litoria	rubella	Walker Ck, Nebo
Frogs	HYLIDAE	Litoria	rubella	Walker Ck, Nebo
Frogs	HYLIDAE	Litoria	rubella	Moranbah, 6km S
Frogs	HYLIDAE	Litoria	rubella	Moranbah, 6kms S
Reptiles	GEKKONIDAE	Diplodactylus	conspicillatus	5km South of Moranbah
Reptiles	GEKKONIDAE	Diplodactylus	conspicillatus	Moranbah, 5km S
Reptiles	GEKKONIDAE	Diplodactylus	conspicillatus	Moranbah, 5km S
Reptiles	GEKKONIDAE	Diplodactylus	steindachneri	Dipperu NP, via Nebo
Reptiles	GEKKONIDAE	Diplodactylus	steindachneri	Walker Ck, Nebo
Reptiles	GEKKONIDAE	Diplodactylus	steindachneri	Moranbah, 6km S
Reptiles	GEKKONIDAE	Diplodactylus	vittatus	Dipperu NP, via Nebo
Reptiles	GEKKONIDAE	Diplodactylus	vittatus	Dipperu NP
Reptiles	GEKKONIDAE	Diplodactylus	vittatus	Walker Ck, Nebo
Reptiles	GEKKONIDAE	Gehyra	catenata	Dipperu NP
Reptiles	GEKKONIDAE	Gehyra	catenata	Dipperu NP
Reptiles	GEKKONIDAE	Gehyra	catenata	Dipperu NP via Nebo
Reptiles	GEKKONIDAE	Gehyra	catenata	Dipperu NP
Reptiles	GEKKONIDAE	Gehyra	dubia	Dipperu NP
Reptiles	GEKKONIDAE	Gehyra	dubia	Dipperu NP via Nebo
Reptiles	GEKKONIDAE	Gehyra	dubia	Collinsville - Glenden Road
Reptiles	GEKKONIDAE	Gehyra	dubia	Dipperu NP, via Nebo
Reptiles	GEKKONIDAE	Gehyra	dubia	Walker Ck, Nebo
Reptiles	GEKKONIDAE	Gehyra	dubia	BHP S Walker Ck Coal Mine, 40km W Nebo
Reptiles	GEKKONIDAE	Heteronotia	binoei	Dipperu NP, nr Nebo
Reptiles	GEKKONIDAE	Heteronotia	binoei	Dipperu NP, via Nebo
Reptiles	GEKKONIDAE	Heteronotia	binoei	Walker Ck, Nebo

Reptiles	GEKKONIDAE	Heteronotia	binoei	5km South of Moranbah
Reptiles	GEKKONIDAE	Heteronotia	binoei	BHP S Walker Ck Coal Mine, 40km NW Nebo
Reptiles	GEKKONIDAE	Nephurus	asper	Dipperu NP
Reptiles	GEKKONIDAE	Nephurus	asper	Dipperu NP
Reptiles	GEKKONIDAE	Nephurus	asper	Dipperu NP
Reptiles	GEKKONIDAE	Nephurus	asper	Dipperu NP
Reptiles	GEKKONIDAE	Oedura	ocellata	Dipperu NP
Reptiles	GEKKONIDAE	Oedura	ocellata	Dipperu NP
Reptiles	GEKKONIDAE	Oedura	ocellata	Dipperu NP
Reptiles	GEKKONIDAE	Oedura	ocellata	Graham's Lagoon, Dipperu NP
Reptiles	GEKKONIDAE	Oedura	ocellata	Dipperu NP, via Nebo
Reptiles	GEKKONIDAE	Oedura	ocellata	Walker Ck, Nebo
Reptiles	SCINCIDAE	Carlia	foliorum	Walker Ck, Nebo
Reptiles	SCINCIDAE	Carlia	foliorum	Walter Creek, Nebo
Reptiles	SCINCIDAE	Carlia	foliorum	Walker Ck, Nebo
Reptiles	SCINCIDAE	Carlia	foliorum	Walker Ck, Nebo
Reptiles	SCINCIDAE	Carlia	munda	Dipperu NP
Reptiles	SCINCIDAE	Carlia	munda	Dipperu NP
Reptiles	SCINCIDAE	Carlia	pectoralis	Dipperu NP
Reptiles	SCINCIDAE	Carlia	pectoralis	Dipperu NP
Reptiles	SCINCIDAE	Carlia	pectoralis	Collinsville - Glenden Road
Reptiles	SCINCIDAE	Carlia	pectoralis	Dipperu NP, via Nebo
Reptiles	SCINCIDAE	Carlia	pectoralis	Walker Ck, Nebo
Reptiles	SCINCIDAE	Carlia	pectoralis	Walker Ck, Nebo
Reptiles	SCINCIDAE	Carlia	pectoralis	Walter Creek, Nebo
Reptiles	SCINCIDAE	Carlia	pectoralis	Walker Ck, Nebo
Reptiles	SCINCIDAE	Carlia	pectoralis	Moranbah, 5km S
Reptiles	SCINCIDAE	Carlia	pectoralis	BHP S Walker Ck Coal Mine, 40km NW Nebo
Reptiles	SCINCIDAE	Cryptoblepharus	carnabyi	Moranbah Township
Reptiles	SCINCIDAE	Cryptoblepharus	plagiocephalus	Walker Ck, Nebo
Reptiles	SCINCIDAE	Cryptoblepharus	plagiocephalus	Walker Ck, Nebo
Reptiles	SCINCIDAE	Cryptoblepharus	virgatus	Dipperu NP
Reptiles	SCINCIDAE	Cryptoblepharus	virgatus	Dipperu NP, via Nebo
Reptiles	SCINCIDAE	Ctenotus	strauchii	Dipperu NP
Reptiles	SCINCIDAE	Ctenotus	strauchii	Walker Ck, Nebo
Reptiles	SCINCIDAE	Ctenotus	strauchii	Walker Ck, Nebo
Reptiles	SCINCIDAE	Ctenotus	strauchii	Moranbah, 5km S
Reptiles	SCINCIDAE	Ctenotus	strauchii	Moranbah, 5km S
Reptiles	SCINCIDAE	Ctenotus	strauchii	BHP S Walker Ck Coal Mine, 40km NW Nebo
Reptiles	SCINCIDAE	Ctenotus	taeniolatus	Dipperu NP, via Nebo
Reptiles	SCINCIDAE	Ctenotus	taeniolatus	Walker Ck, Nebo
Reptiles	SCINCIDAE	Ctenotus	taeniolatus	Moranbah, 6km S
Reptiles	SCINCIDAE	Egernia	striolata	Dipperu NP, via Nebo
Reptiles	SCINCIDAE	Egernia	striolata	Walker Ck, Nebo
Reptiles	SCINCIDAE	Eulamprus	martini	Dipperu NP, via Nebo
Reptiles	SCINCIDAE	Lampropholis	delicata	Moranbah - Central highlands
Reptiles	SCINCIDAE	Lerista	fragilis	Nebo, c. 75km W in Kerlong Range
Reptiles	SCINCIDAE	Menetia	greyii	Walker Ck, Nebo
Reptiles	SCINCIDAE	Menetia	greyii	Moranbah, 5km S
Reptiles	SCINCIDAE	Menetia	timlowi	Walker Ck, Nebo
Reptiles	SCINCIDAE	Menetia	timlowi	Walter Creek, Nebo
Reptiles	SCINCIDAE	Morethia	taeniopleura	Dipperu NP
Reptiles	SCINCIDAE	Morethia	taeniopleura	Dipperu NP, via Nebo
Reptiles	SCINCIDAE	Morethia	taeniopleura	Walker Ck, Nebo
Reptiles	SCINCIDAE	Morethia	taeniopleura	Walker Ck, Nebo
Reptiles	AGAMIDAE	Diporiphora	australis	Dipperu NP
Reptiles	AGAMIDAE	Diporiphora	australis	Dipperu NP, via Nebo
Reptiles	AGAMIDAE	Diporiphora	australis	Dipperu NP, via Nebo
Reptiles	AGAMIDAE	Pogona	barbata	Dipperu NP, via Nebo
Reptiles	Pythonidae	Morelia	spilota	Mackay, 75km W, on rd to Nebo

Reptiles	COLUBRIDAE	Tropidonophis	mairii	Walker Ck, Nebo
Reptiles	ELAPIDAE	Denisonia	maculata	Dipperu NP
Mammals	Muridae	Mus	musculus	Dipperu NP
Mammals	Muridae	Mus	musculus	Dipperu NP
Mammals	Muridae	Mus	musculus	BHP Sth Walker Ck Coal Mine, 40km NW Nebo
Mammals	Muridae	Pseudomys	delicatulus	Moranbah, 5km S
Frogs	MYOBATRACHIDAE	Limnodynastes	ornatus	BHP S Walker Ck Coal Mine, 40km NW Nebo
Frogs	MYOBATRACHIDAE	Limnodynastes	sp	Walker Ck., Nebo
Frogs	MYOBATRACHIDAE	Limnodynastes	tasmaniensis	BHP S Walker Ck Coal Mine, 40km NW Nebo
Frogs	MYOBATRACHIDAE	Limnodynastes	terraereginae	BHP S Walker Ck Coal Mine, 40km W Nebo
Frogs	MYOBATRACHIDAE	Notaden	bennettii	Goonyella
Frogs	MYOBATRACHIDAE	Uperoleia	sp	BHP S Walker Ck Coal Mine, 40km NW Nebo
Frogs	HYLIDAE	Cyclorana	alboguttata	BHP S Walker Ck Coal Mine, 40km W Nebo
Frogs	HYLIDAE	Cyclorana	brevipes	Moranbah, 5km S
Frogs	HYLIDAE	Cyclorana	novaehollandiae	BHP S Walker Ck Coal Mine, 40km W Nebo
Frogs	HYLIDAE	Litoria	caerulea	BHP S Walker Ck Coal Mine, 40km W Nebo
Frogs	HYLIDAE	Litoria	inermis	BHP S Walker Ck Coal Mine, 40km W Nebo
Frogs	HYLIDAE	Litoria	latopalmata	BHP S Walker Ck Coal Mine, 40km NW Nebo
Frogs	HYLIDAE	Litoria	rubella	BHP S Walker Ck Coal Mine, 40km NW Nebo
Reptiles	GEKKONIDAE	Diplodactylus	conspicillatus	BHP S Walker Ck Coal Mine, 40km W Nebo
Reptiles	GEKKONIDAE	Diplodactylus	steindachneri	Moranbah, 5km S
Reptiles	GEKKONIDAE	Diplodactylus	vittatus	5km South of Moranbah
Reptiles	GEKKONIDAE	Gehyra	catenata	Clermont, 160km N
Reptiles	GEKKONIDAE	Gehyra	dubia	BHP S Walker Ck Coal Mine, 40km W Nebo
Reptiles	GEKKONIDAE	Heteronotia	binoei	BHP S Walker Ck Coal Mine, 40km W Nebo
Reptiles	GEKKONIDAE	Nephrurus	asper	Mackay, 80km SW
Reptiles	GEKKONIDAE	Oedura	ocellata	BHP S Walker Ck Coal Mine, 40km NW Nebo
Reptiles	SCINCIDAE	Carlia	foliorum	BHP S Walker Ck Coal Mine, 40km NW Nebo
Reptiles	SCINCIDAE	Carlia	munda	BHP S Walker Ck Coal Mine, 40km NW Nebo
Reptiles	SCINCIDAE	Carlia	mundivensis	Homevale, Mt Britten Mine
Reptiles	SCINCIDAE	Carlia	pectoralis	Coppabella, 4km E, via Nebo
Reptiles	SCINCIDAE	Carlia	vivax	Homevale, Mt Britten Mine
Reptiles	SCINCIDAE	Cryptoblepharus	carnabyi	Moranbah, 5km S
Reptiles	SCINCIDAE	Cryptoblepharus	plagiocephalus	5km South of Moranbah
Reptiles	SCINCIDAE	Cryptoblepharus	virgatus	Moranbah - Central highlands
Reptiles	SCINCIDAE	Ctenotus	robustus	BHP S Walker Ck Coal Mine, 40km NW Nebo
Reptiles	SCINCIDAE	Ctenotus	strauchii	BHP S Walker Ck Coal Mine, 40km NW Nebo
Reptiles	SCINCIDAE	Ctenotus	taeniolatus	BHP S Walker Ck Coal Mine, 40km NW Nebo
Reptiles	SCINCIDAE	Egernia	striolata	Dipperu NP. Singles Lagoon
Reptiles	SCINCIDAE	Eulamprus	martini	Dipperu NP, via Nebo
Reptiles	SCINCIDAE	Lampropholis	delicata	Moranbah
Reptiles	SCINCIDAE	Merista	fragilis	5km South of Moranbah
Reptiles	SCINCIDAE	Menetia	greyii	BHP S Walker Ck Coal Mine, 40km NW Nebo
Reptiles	SCINCIDAE	Menetia	timlowi	BHP S Walker Ck Coal Mine, 40km NW Nebo
Reptiles	SCINCIDAE	Morethia	boulengeri	Moranbah, 5km S
Reptiles	SCINCIDAE	Morethia	taenioleura	BHP S Walker Ck Coal Mine, 40km NW Nebo
Reptiles	AGAMIDAE	Chlamydosaurus	kingii	BHP S Walker Ck Coal Mine, 40km NW Nebo
Reptiles	AGAMIDAE	Diporiphora	australis	Walker Ck, Nebo
Reptiles	AGAMIDAE	Pogona	barbata	BHP S Walker Ck Coal Mine, 40km NW Nebo
Reptiles	VARANIDAE	Varanus	tristis	BHP S Walker Ck Coal Mine, 40km NW Nebo
Reptiles	Pythonidae	Morelia	kinghorni	Mackay, Nebo
Reptiles	Pythonidae	Morelia	spilota	Dipperu NP, via Nebo
Reptiles	COLUBRIDAE	Dendrelaphis	punctulata	Peak Downs Hwy, 3.2km S Nebo
Reptiles	COLUBRIDAE	Tropidonophis	mairii	BHP S Walker Ck Coal Mine, 40km NW Nebo
Reptiles	ELAPIDAE	Brachyurophis	australis	Walker Ck, Nebo
Reptiles	ELAPIDAE	Demansia	psammophis	Walker Ck, Nebo
Reptiles	ELAPIDAE	Demansia	vestigiata	BHP S Walker Ck Coal Mine, 40km NW Nebo
Reptiles	ELAPIDAE	Denisonia	maculata	Walker Ck, Nebo
Reptiles	ELAPIDAE	Pseudonaja	textilis	Nebo area
Birds	PACHYCEPHALIDA	Colluricincla	megarhyncha	Clarke Range, Chelmans Rd

Birds	CORVIDAE	Corvus	orru	Nebo, 64km W on Peak Downs H'way
Mammals	Dasyuridae	Planigale	maculata	Walker Ck, Nebo
Mammals	Peramelidae	Isodon	macrourus	Sutton R, 150km N of Clermont
Mammals	Petauridae	Petaurus	breviceps	Moranbah
Mammals	Macropodidae	Macropus	robustus	Bundarra Hsd, via Nebo
Mammals	Muridae	Mus	musculus	BHP Sth Walker Ck Coal Mine, 40km NW Nebo
Mammals	Muridae	Pseudomys	delicatulus	BHP Sth Walker Ck Coal Mine, 40km NW Nebo
Mammals	Muridae	Rattus	sordidus	BHP Sth Walker Ck Coal Mine, 40km NW Nebo