

Corporate Data

Contents

Principal Subsidiaries and Associated Companies	82
Global Network	88
Officers and Corporate Auditors	90
Organization	92



Principal Subsidiaries and Associated Companies

■ Metal Products Business Unit

SC Grainger Co., Ltd.
Common Stock : ¥ 1,953 millions
Ownership : 38.29%
Electric-commerce of MRO (maintenance, repair, and operations) products

Sumisho Tekko Hanbai Co., Ltd.
Common Stock : ¥ 310 millions
Ownership : 100%
Sale of steel products

SC Material Co., Ltd.
Common Stock : ¥ 50 millions
Ownership : 100%
Scrapyard for ferrous and non-ferrous metals

Sekisho Shoji Kaisha, Ltd.
Common Stock : ¥ 44 millions
Ownership : 50%
Scrapyard for ferrous and non-ferrous metals

Hokkaido Shearing Kaisha, Ltd.
Common Stock : ¥ 210 millions
Ownership : 96.4%
Fabrication and sale of steel products

Sumisho Iron and Steel Co., Ltd.
Common Stock : ¥ 100 millions
Ownership : 90%
Sale of specialty steel

SC Steel Trade Co., Ltd.
Common Stock : ¥ 10 millions
Ownership : 100%
Sale of steel sheet

Fibercoat Co., Ltd.
Common Stock : ¥ 150 millions
Ownership : 64.63%
Manufacture and sale of fiber-coated steel

SC Tubulars Co., Ltd.
Common Stock : ¥ 50 millions
Ownership : 100%
Sale of specialty tubular products

Sumisho Pipe and Steel Co., Ltd.
Common Stock : ¥ 679 millions
Ownership : 100%
Sale of steel piping and other steel products

Mazda Steel Co., Ltd.
Common Stock : ¥ 60 millions
Ownership : 51%
Shearing, slitting, and blanking of steel sheet

Sumisho Metalex Corporation
Common Stock : ¥ 1,170 millions
Ownership : 69.62%
Sale of non-ferrous metal products, materials for home heat solution

Summit Aluminum Ltd.
Common Stock : ¥ 400 millions
Ownership : 77.8%
Production of aluminum alloy ingots

Alcut Co., Ltd.
Common Stock : ¥ 96 millions
Ownership : 65%
Shearing, slitting, and blanking of aluminum coils, sheets, and circles

SC Steel Investment, Inc. (U.S.)
Common Stock : US\$ 22,408 thousands
Ownership : 100%
Investment in Arkansas Steel Associates

CST Steel Center Co., Ltd. (Thailand)
Common Stock : BAHT 75,000 thousands
Ownership : 48%
Sale of construction steel products

Asian Steel Company Ltd. (Singapore)
Common Stock : S\$ 34,603 thousands
Ownership : 100%
Investment in steel service centers and other operations in Asia

Pandai Steel Industry Pte. Ltd. (Singapore)
Common Stock : S\$ 8,000 thousands
Ownership : 100%
Shearing, slitting, and sale of steel plates

Petro-Summit Mechanical Co., Ltd. (Vietnam)
Common Stock : US\$ 3,674 thousands
Ownership : 51%
Manufacture of steel drum

P.T. Super Steel Karawang (Indonesia)
Common Stock : US\$ 4,000 thousands
Ownership : 75%
Shearing, slitting, and sale of steel plates

P.T. Super Steel Indah (Indonesia)
Common Stock : RP 3,573,000 thousands
Ownership : 40.02%
Shearing, slitting, and sale of steel plates

CS Metal Co., Ltd. (Thailand)
Common Stock : BAHT 360,000 thousands
Ownership : 47.33%
Shearing, slitting, and sale of steel plates

United Steel Center Manila Incorporated (Philippines)
Common Stock : P.PESO 300,000 thousands
Ownership : 90%
Investment in steel service center

Mactan Steel Center Inc. (Philippines)
Common Stock : P.PESO 70,000 thousands
Ownership : 100%
Shearing, slitting, and sale of steel plates

Calamba Steel Center Inc. (Philippines)
Common Stock : P.PESO 281,000 thousands
Ownership : 100%
Shearing, slitting, and sale of steel plates

S.Y. Metal Ltd. (Hong Kong)
Common Stock : HK\$ 80,000 thousands
Ownership : 98.75%
Investment in steel service center, sale of steel materials

Dong Guan S.Y. Metal Ltd. (China)
Common Stock : RMB¥ 50,968 thousands
Ownership : 80%
Shearing, slitting, and sale of steel plates

Shanghai Summit Metal Products Co., Ltd. (China)
Common Stock : US\$ 6,000 thousands
Ownership : 80%
Shearing, slitting, and sale of steel plates

Tianjin Hua Zhu Metal Products Co., Ltd. (China)
Common Stock : US\$ 5,000 thousands
Ownership : 53.9%
Shearing, slitting, and sale of steel plates

Myanmar Sai Steel Industry Co., Ltd. (Myanmar)
Common Stock : KYAT 22,800 thousands
Ownership : 51%
Manufacture and sale of galvanized plates

Shanghai Hi-Tec Metal Products Co., Ltd. (China)
Common Stock : US\$ 4,800 thousands
Ownership : 90%
Manufacture and sale of metal-processing products

Thai Special Wire Co., Ltd. (Thailand)
Common Stock : BAHT 160,000 thousands
Ownership : 73.5%
Manufacture and sale of PC wire and strand

SC Pipe Services Inc. (U.S.)
Common Stock : US\$ 3,050 thousands
Ownership : 100%
Investment in VAMPTS Co.

SC Metal Pty. Ltd. (Australia)
Common Stock : A\$ 23,208 thousands
Ownership : 100%
Investment in aluminum smelting operation in Australia

CS Non-Ferrous Center Co., Ltd. (Thailand)
Common Stock : BAHT 110,000 thousands
Ownership : 42%
Shearing, slitting, and sale of non-ferrous metal sheets

■ Transportation & Construction Systems Business Unit

Sumisho Machinery Trade Corporation
Common Stock : ¥ 450 millions
Ownership : 100%
Trading of machinery and equipment

Sumisho Marine Co., Ltd.
Common Stock : ¥ 30 millions
Ownership : 100%
Central management of Sumitomo Corp.'s loans and shipping fleet

Sumisho Aero-Systems Corporation
Common Stock : ¥ 70 millions
Ownership : 100%
Sale of aerospace equipment

Sumisho Auto Leasing Co., Ltd.
Common Stock : ¥ 2,751 millions
Ownership : 54.9%
Leasing of motor vehicles

R.B.I.
Common Stock : ¥ 490 millions
Ownership : 100%
Automotive e-business operator

Blue-Tech Corporation
Common Stock : ¥ 250 millions
Ownership : 100%
Rental of aerial work platforms

FCS Dis Ticaret Limited Sirketi (Turkey)
Common Stock : T.LIRA 190,000,000 thousands
Ownership : 100%
Sales of automotive spare parts and accessories

Summit Motors (Vladivostok) (Russia)
Common Stock : RB 15,081 thousands
Ownership : 100%
Sale of Toyota motor vehicles

Nissan Otomotiv A.S. (Turkey)
Common Stock : T.LIRA 5,685,334,000 thousands
Ownership : 97.62%
Sale and import of Nissan motor vehicles

Summit Development S.A. (Belgium)
Common Stock : EURO 32,259 thousands
Ownership : 100%
Car business holding unit

Summit Motors (Cameroun) S.A. (Cameroun)
Common Stock : CFAF 500,000 thousands
Ownership : 100%
Sale of motor vehicles

Summit Investment Australia Pty Limited (Australia)
Common Stock : A\$ 27,000 thousands
Ownership : 100%
Holding and management company of automotive dealership

▶ Summit Auto Lease Australia Pty Limited (Australia)
Common Stock : A\$ 12,000 thousands
Summit Investment Australia's ownership : 100%
Motor vehicle leasing to corporate customers

Summit Auto Management (Thailand)
 Common Stock : BAHT 240,000 thousands
 Ownership : 100%
 Holding and management company of automotive dealership

Summit Motors Investment (U.K.) Limited (U.K.)
 Common Stock : STGE 28,456 thousands
 Ownership : 100%
 Holding and management company of automotive dealership

P.T. Oto Multiartha (Indonesia)
 Common Stock : RP 325,000,000 thousands
 Ownership : 95.96%
 Financing of vehicles

Komatsu Canada Limited (Canada)
 Common Stock : CANS 24,800 thousands
 Ownership : 100%
 Wholesale of construction machinery and management of dealers in Canada

Komatsu Espana S.A. (Spain)
 Common Stock : PTAS 350,000 thousands
 Ownership : 66.66%
 Sale of construction machinery

SMS International Corporation (U.S.)
 Common Stock : US\$ 12,000 thousands
 Ownership : 100%
 Sale of construction machinery

Red Australia Equipment Pty Ltd. (Australia)
 Common Stock : AS 5,000 thousands
 Ownership : 100%
 Forklift hire/rental, and sale/service for material handling equipment in Australia

SC Construction Machinery (Shanghai) Ltd. (China)
 Common Stock : RMBY 41,398 thousands
 Ownership : 100%
 Sale of construction machinery

Beijing HY Construction & Machinery Ltd. (China)
 Common Stock : RMBY 4,140 thousands
 Ownership : 60%
 Sale of construction machinery

Sumitec International, Ltd. (Russia)
 Common Stock : RB 20,055 thousands
 Ownership : 100%
 Sale and aftersales service of construction, mining machinery and material handling equipment in Russia

Machinery & Electric Business Unit

Sumisho Machinery Trade Corporation
 Common Stock : ¥ 450 millions
 Ownership : 100%
 Trading of machinery and equipment

SC Machinex Corporation
 Common Stock : ¥ 450 millions
 Ownership : 100%
 Sale of machinery and equipment

SC Machinex Kansai Corporation
 Common Stock : ¥ 360 millions
 Ownership : 100%
 Sale of machinery and equipment

SC BioSciences Corporation
 Common Stock : ¥ 480 millions
 Ownership : 100%
 Sales of biotechnology instruments/technology

Hokkaido District Heating Co., Ltd.
 Common Stock : ¥ 800 millions
 Ownership : 45.63%
 District heating and cooling in Sapporo

Inamoto Manufacturing Co., Ltd.
 Common Stock : ¥ 96 millions
 Ownership : 70.24%
 Manufacture and sale of industrial washing machines

Inax Corporation
 Common Stock : ¥ 100 millions
 Ownership : 97.44%
 Sale and maintenance of industrial washing machines

SC Wado Co., Ltd.
 Common Stock : ¥ 300 millions
 Ownership : 100%
 Sale of machine tools

Chugoku Systech Corporation
 Common Stock : ¥ 80 millions
 Ownership : 85%
 Sale and installation of air-conditioning equipment

GE Packaged Power, Ltd.
 Common Stock : ¥ 20 millions
 Ownership : 49%
 Service and maintenance of gas-turbine power plants

Media, Electronics & Network Business Unit

Nippon Card Co., Ltd.
 Common Stock : ¥ 1,500 millions
 Ownership : 18.87%
 Production and sale of point-card systems and equipment

VA Linux Systems Japan K.K.
 Common Stock : ¥ 100 millions
 Ownership : 71.6%
 Sale of Linux Server

MS Communications Co., Ltd.
 Common Stock : ¥ 5,458 millions
 Ownership : 50%
 Sales of telephone circuits and equipment

Cross Beam Networks Corporation
 Common Stock : ¥ 100 millions
 Ownership : 100%
 Sales of broadband systems, e-commerce ASP

Lycos Japan, Inc.
 Common Stock : ¥ 4,525 millions
 Ownership : 44.72%
 Internet portal

Asia Internet Holding Co., Ltd.
 Common Stock : ¥ 1,624 millions
 Ownership : 31.61%
 Providing international Internet-related telecommunications services

Jupiter Programming Co., Ltd. (JPC)
 Common Stock : ¥ 16,834 millions
 Ownership : 50%
 Management and operation of programming services

JPC's main operating channels

▶ Cable Soft Network Corporation
 Common Stock : ¥ 1,788 millions
 JPC's ownership : 100%
 Supplier of movie programming

▶ Jupiter Golf Network Co., Ltd.
 Common Stock : ¥ 1,700 millions
 JPC's ownership : 89.41%
 Supplier of golf programming

▶ Jupiter Shop Channel Co., Ltd.
 Common Stock : ¥ 4,400 millions
 JPC's ownership : 70%
 Supplier of live TV shopping programming

▶ Discovery Japan Inc.
 Common Stock : ¥ 3,890 millions
 JPC's ownership : 50%
 Supplier of documentary programming

▶ J-Sports Co., Ltd.
 Common Stock : ¥ 5,451 millions
 JPC's ownership : 66.66%
 Supplier of sports programming

▶ La La Media, Co., Ltd.
 Common Stock : ¥ 495 millions
 JPC's ownership : 100%
 Supplier of women's entertainment programming

▶ Animal Planet Japan K.K.
 Common Stock : ¥ 41 millions
 JPC's ownership : 33.33%
 Supplier of animal entertainment programming

Asmik Ace Entertainment Inc.
 Common Stock : ¥ 917 millions
 Ownership : 49.62%
 Production and distribution of movies, videos, and game software

Step Visual Corporation
 Common Stock : ¥ 490 millions
 Ownership : 91.84%
 Production and sale of visual software

United Cinema Co., Ltd.
 Common Stock : ¥ 1,600 millions
 Ownership : 40%
 Construction and operation of multiplex cinemas

Jupiter Telecommunications Co., Ltd. (J-COM Broadband)
 Common Stock : ¥ 47,003 millions
 Ownership : 36.28%
 Cable television multiple system operator (MSO)

J-COM Broadband managed franchises

▶ J-COM Tokyo Co., Ltd.
 Common Stock : ¥ 10,075 millions
 J-COM's ownership : 79.41%
 Cable television operation

▶ J-COM Shonan Co., Ltd.
 Common Stock : ¥ 5,772 millions
 J-COM's ownership : 78.83%
 Cable television operation

▶ Urawa Cable Television Network Co., Ltd.
 Common Stock : ¥ 1,600 millions
 J-COM's ownership : 50.1%
 Cable television operation

▶ Media Saitama Co., Ltd.
 Common Stock : ¥ 2,993 millions
 J-COM's ownership : 50.22%
 Cable television operation

▶ Tsuchiura Cable Television Co., Ltd.
 Common Stock : ¥ 1,500 millions
 J-COM's ownership : 70%
 Cable television operation

▶ Kisarazu Cable Television Co., Ltd.
 Common Stock : ¥ 1,800 millions
 J-COM's ownership : 81.69%
 Cable television operation

▶ Cable Network Yachiyo Co., Ltd.
 Common Stock : ¥ 1,600 millions
 J-COM's ownership : 58.4%
 Cable television operation

▶ Super Network U Inc.
 Common Stock : ¥ 3,395 millions
 J-COM's ownership : 59.09%
 Cable television operation

- ▶ Izumi CATV Co., Ltd.
Common Stock : ¥ 676 millions
J-COM's ownership : 67.31%
Cable television operation
- ▶ J-COM Gunma Co., Ltd.
Common Stock : ¥ 1,100 millions
J-COM's ownership : 100%
Cable television operation
- ▶ Hokusetsu Cable Net Co., Ltd.
Common Stock : ¥ 2,000 millions
J-COM's ownership : 55%
Cable television operation
- ▶ J-COM Kansai Co., Ltd.
Common Stock : ¥ 15,500 millions
J-COM's ownership : 84.48%
Cable television operation
- ▶ Cablenet Kobe Ashiya Co., Ltd.
Common Stock : ¥ 2,900 millions
J-COM's ownership : 52.62%
Cable television operation
- ▶ Cable Net Shimonoseki Co., Ltd.
Common Stock : ¥ 1,000 millions
J-COM's ownership : 50%
Cable television operation
- ▶ J-COM Kitakyushu Co., Ltd.
Common Stock : ¥ 1,801 millions
J-COM's ownership : 81.43%
Cable television operation
- ▶ Cablevision 21 Inc.
Common Stock : ¥ 3,166 millions
J-COM's ownership : 69.47%
Cable television operation
- ▶ Fukuoka Cable Network Co., Ltd.
Common Stock : ¥ 2,000 millions
J-COM's ownership : 45%
Cable television operation
- ▶ J-COM Kanto Co., Ltd.
Common Stock : ¥ 30,004 millions
J-COM's ownership : 100%
Cable television operation
- ▶▶ J-COM Sapporo Co., Ltd.
Common Stock : ¥ 8,800 millions
J-COM Kanto's ownership : 81.82%
Cable television operation

Kansai Multimedia Service Co., Ltd.
Common Stock : ¥ 2,000 millions
Ownership SC : 6.5%
J-COM : 25.75%

Cable-Internet service provider

@NetHome Co., Ltd.

Common Stock : ¥ 7,800 millions
Ownership SC : 12.56%
J-COM : 87.44%

Cable-Internet service provider

AJCC Corporation

Common Stock : ¥ 400 millions
Ownership : 57.5%
Leasing of cable television converters

Cable System Engineering Corporation

Common Stock : ¥ 490 millions
Ownership : 40%
Engineering and construction of CATV transmission networks and station equipment

Billingsoft Japan Co., Ltd.

Common Stock : ¥ 100 millions
Ownership : 49%
Development and sale of CATV billing software

JSAT Corporation

Common Stock : ¥ 53,770 millions
Ownership : 14.12%
Satellite communications

SKY Perfect Communications Inc.

Common Stock : ¥ 139,456 millions
Ownership : 3.1%
Satellite digital broadcasting

AlphaBridge Corporation

Common Stock : ¥ 370 millions
Ownership : 64.19%
Digital contents delivery storage/services over broadband network

Sumisho Computer Systems Corporation

Common Stock : ¥ 21,153 millions
Ownership : 40%
Data processing services; development and sale of computer software

Sumisho Electronics Co., Ltd.

Common Stock : ¥ 1,782 millions
Ownership : 65.27%
Sale of office computers, systems, and software

SC ComTex, Inc.

Common Stock : ¥ 300 millions
Ownership : 80%
Sale of corporate data communications systems

SC Hightech Corporation

Common Stock : ¥ 300 millions
Ownership : 100%
Sale of software designed for semiconductors

G-Plan Inc.

Common Stock : ¥ 800 millions
Ownership : 35%
Point e-market place

SC Venture Partners & Co.

Common Stock : ¥ 50 millions
Ownership : 100%
Consulting of investment and fund management

SC Semicon Technology Corporation

Common Stock : ¥ 300 millions
Ownership : 85%
Marketing and maintenance of, and consulting for semiconductor manufacturing systems

Sumitronics Corporation

Common Stock : ¥ 200 millions
Ownership : 100%
Sale of electronics products and parts

Pleomart, Inc.

Common Stock : ¥ 1,100 millions
Ownership : 27.27%
Intermediate commodities e-market place provider

WAM!NET Japan K.K.

Common Stock : ¥ 30 millions
Ownership : 80.03%
Digital graphics data transfer service

Sumitronics Inc. (U.S.)

Common Stock : US\$ 7,800 thousands
Ownership : 100%
Sale of electronics equipment and parts

Sumitronics Taiwan Co., Ltd. (Taiwan)

Common Stock : NT\$ 10,000 thousands
Ownership : 100%
Sale of electronics materials and parts

Sumitronics Asia Holding Pte. Ltd. (Singapore)

Common Stock : S\$ 14,120 thousands
Ownership : 100%
Management and operation of Sumitronics group

SC Electronics Korea Ltd. (Korea)

Common Stock : W 1,000,000 thousands
Ownership : 100%
Sale of electronics products and parts

Technoclean Philippines, Inc. (Philippines)

Common Stock : P.PESO 125,622 thousands
Ownership : 100%
High-tech cleaning service of clean room garments

Chemical Business Unit

Sumitomo Shoji Chemicals Co., Ltd.

Common Stock : ¥ 480 millions
Ownership : 100%
Sale of chemical products

Sumisho Air Water Co., Ltd.

Common Stock : ¥ 480 millions
Ownership : 40%
Manufacturing and sales of hydrogen and other industrial gases

Goei Shoji Kaisha, Ltd.

Common Stock : ¥ 138 millions
Ownership : 86.79%
Sale of pharmaceuticals and industrial chemicals

Summit Pharmaceuticals International Corporation

Common Stock : ¥ 480 millions
Ownership : 80%
A comprehensive provider of innovative and biotechnology oriented pharmaceutical & diagnostic R&D related services

Summit Agro International, Ltd.

Common Stock : ¥ 320 millions
Ownership : 100%
Sale of agricultural chemicals, fertilizers, and other materials; sale and leasing of related equipment

Sumitomo Shoji Plastics Co., Ltd.

Common Stock : ¥ 900 millions
Ownership : 100%
Sale and trade of plastics

SPS Minerals Technology Sdn. Bhd. (Malaysia)

Common Stock : M\$ 4,450 thousands
Ownership : 59.93%
Pulverization, processing, and sale of feldspar, etc.

Interacid Trading S.A. (Switzerland)

Common Stock : S.FR 20,000 thousands
Ownership : 85%
International trade of sulfur and sulfuric acid

Summit Agro Europe Ltd. (U.K.)

Common Stock : EURO 22,919 thousands
Ownership : 100%
Investment in agricultural chemicals in Europe

Cantex Inc. (U.S.)

Common Stock : US\$ 15,000 thousands
Ownership : 100%
Manufacture and sale of polyvinyl chloride pipes

New Port Bulk Terminal Sdn. Bhd. (Malaysia)

Common Stock : M\$ 2,000 thousands
Ownership : 70%
Storage, transportation, and sale of liquid chemicals

Mineral Resources & Energy Business Unit

Sumisho Reftech Co., Ltd.

Common Stock : ¥ 200 millions
Ownership : 100%
Manufacture and sale of and technical service for fire-proof materials; import and sale of steel-related materials and equipment

Nusa Tenggara Mining Corporation
Common Stock : ¥ 14,000 millions
Ownership : 74.28%
Investment in and financing of the Batu Hijau copper/gold mine development project in Indonesia

Sumisho Oil Corporation
Common Stock : ¥ 500 millions
Ownership : 100%
Sale of petroleum products and operation of gas stations

Sumisho Ekika Gas Kaisha, Ltd.
Common Stock : ¥ 495 millions
Ownership : 100%
Sale and distribution of LPG in Honshu, Shikoku, and Kyushu

Sumisho Daiichi Sekiyu Gas Kaisha, Ltd.
Common Stock : ¥ 250 millions
Ownership : 100%
Sale and distribution of LPG in Hokkaido

LNG Japan Corporation
Common Stock : ¥ 8,002 millions
Ownership : 50%
Trading of LNG, investment and financing related to LNG business

Nippon Nuclear Service Corporation
Common Stock : ¥ 40 millions
Ownership : 100%
Nuclear fuel transport and related services and sale of related equipment

Summit Energy Corporation
Common Stock : ¥ 50 millions
Ownership : 70%
Power retailing business

Sumisho Coal Australia Pty. Ltd. (Australia)
Common Stock : AS 60,000 thousands
Ownership : 100%
Investments in Oaky Creek coal mine and other mines

SC Mineral Resources Pty. Ltd. (Australia)
Common Stock : AS 14,100 thousands
Ownership : 100%
Investments in the North Parks copper mine in Australia

SC Minerals America, Inc. (U.S.)
Common Stock : US\$ 1 thousand
Ownership : 100%
Development of non-ferrous metals exploration and investment in SMMA for the Morenci copper mine in the U.S. and the La Candelaria copper mine in Chile

Consumer Goods & Service Business Unit

Sumisho Nosan Kaisha, Ltd.
Common Stock : ¥ 55 millions
Ownership : 100%
Sale of fertilizers and agriculture-related materials

Nittoh Bion Co., Ltd.
Common Stock : ¥ 1,304 millions
Ownership : 50%
Manufacture and sale of fertilizer

SC Fertilizer Investment Co., Ltd.
Common Stock : ¥ 370 millions
Ownership : 100%
Fertilizer investment

Sumisho Fresh Meat Co., Ltd.
Common Stock : ¥ 100 millions
Ownership : 100%
Sale of beef, pork, and processed meats, including chicken

Chiba Grain Handling Center, Ltd.
Common Stock : ¥ 708 millions
Ownership : 50.5%
Grain storage

Ryohan Co., Ltd.
Common Stock : ¥ 95 millions
Ownership : 97.89%
Retail of rice

Sumisho Feed Co., Ltd.
Common Stock : ¥ 10 millions
Ownership : 100%
Sale of hay and feedstuff

Summit Oil Mill Co., Ltd.
Common Stock : ¥ 97 millions
Ownership : 51%
Manufacture and sale of vegetable oil and oil meal

Yoshihara Oil Mill, Ltd.
Common Stock : ¥ 2,120 millions
Ownership : 33.34%
Manufacture and sale of vegetable oil and oil meal

SC Foods Co., Ltd.
Common Stock : ¥ 495 millions
Ownership : 100%
Import, development, and sale of foodstuffs

Shinko Sugar Co., Ltd.
Common Stock : ¥ 1,495 millions
Ownership : 66.6%
Sugar refining

Sumifru Corporation
Common Stock : ¥ 150 millions
Ownership : 100%
Import and sale of fruits and vegetables

Allied Co., Ltd.
Common Stock : ¥ 60 millions
Ownership : 100%
Import of flowers

Summit Inc.
Common Stock : ¥ 3,920 millions
Ownership : 100%
Supermarket chain

Summit Colmo, Inc.
Common Stock : ¥ 100 millions
Ownership : 100%
General merchandise store chain

Mammy Mart Corporation
Common Stock : ¥ 2,660 millions
Ownership : 20%
Supermarket chain

Sumisho Drugstores Inc.
Common Stock : ¥ 160 millions
Ownership : 100%
Drugstore chain

Otto-Sumisho Inc.
Common Stock : ¥ 7,150 millions
Ownership : 49%
Mail-order business with Otto-Versand, Germany

Eddie Bauer Japan Inc.
Common Stock : ¥ 3,000 millions
Ownership : 34.3%
Sale of Eddie Bauer brand casual wears & goods through mail-order & retailstore chain

Club Createurs Beaute Japon, Inc.
Common Stock : ¥ 1,150 millions
Ownership : 29.4%
Mail-order business of brand cosmetics offered by the top French creators such as agnés b. and Michel Klein

Sumisho Hermes General Service Inc.
Common Stock : ¥ 250 millions
Ownership : 51%
Fulfillment service provider for mail-order business

Sumisho Gourmet Coffee Inc.
Common Stock : ¥ 150 millions
Ownership : 100%
Italian Cafe chain

Coach Japan, Inc.
Common Stock : ¥ 50 millions
Ownership : 50%
Sale of Coach brand handbags and accessories

Oriental Diamond, Inc.
Common Stock : ¥ 270 millions
Ownership : 100%
Wholesale and retail sales of polished diamonds and jewelry products

Taisei Coins Corporation
Common Stock : ¥ 200 millions
Ownership : 80%
Sale of the numismatic coins & commemorative coins covering all over the world

Sumisho Fine Goods Corporation
Common Stock : ¥ 50 millions
Ownership : 100%
Space & interior designing and installation, import and wholesale of consumer goods such as furniture for residential and contract use

Sumifert Sdn. Bhd. (Malaysia)
Common Stock : MS 500 thousands
Ownership : 50%
Sale of fertilizers

Summit-Quinphos (NZ) Ltd. (New Zealand)
Common Stock : NZ\$ 1,818 thousands
Ownership : 60%
Import and sale of fertilizers in New Zealand

Summit Specialty Oil Co., Inc. (U.S.)
Common Stock : US\$ 3,716 thousands
Ownership : 100%
Contracting of vegetable oil crushing and refining in the U.S.

Pressa Holding, Inc. (U.S.)
Common Stock : US\$ 2,460 thousands
Ownership : 100%
Investment in hay compressing operation in the U.S.

SC Agri Produce Pty Ltd (Australia)
Common Stock : AS 1,500 thousands
Ownership : 100%
Investment in hay compressing operation in Australia

Sumitex Hong Kong Limited (Hong Kong)
Common Stock : HK\$ 10,000 thousands
Ownership : 100%
Sale of textile products and materials

Dalian Huayou Knitting Co., Ltd. (China)
Common Stock : RMBY 11,000 thousands
Ownership : 100%
Manufacture and sale of tussah silk sweaters

Materials & Real Estate Business Unit

S.C. Cement Co., Ltd.
Common Stock : ¥ 200 millions
Ownership : 100%
Sale of ready-mixed concrete and concrete products

Sumisho & Mitsubussan Kenzai Co., Ltd.
Common Stock : ¥ 2,500 millions
Ownership : 50%
Sale of building materials

Sumisho Paper Co., Ltd.
Common Stock : ¥ 400 millions
Ownership : 100%
Sale of pulp, wastepaper and paper products

Daiichi Packaging Co., Ltd.
Common Stock : ¥ 271 millions
Ownership : 61.78%
Manufacture and sale of corrugated carton boxes (flexography printed and offset printed)

SC Tire International Co., Ltd.
Common Stock : ¥ 50 millions
Ownership : 100%
Import, export and sales of tires and tubes

Sumisho Building Management Co., Ltd.
Common Stock : ¥ 100 millions
Ownership : 100%
Management and operation of office buildings and shopping centers

Sumisho Urban Kaihatsu Co., Ltd.
Common Stock : ¥ 100 millions
Ownership : 100%
Planning, development, management, and operation of shopping centers; microbrewery

SC Properties Co., Ltd.
Common Stock : ¥ 3,400 millions
Ownership : 100%
Ownership and leasing of office buildings and other real estate

Yokohama City Management Co., Ltd.
Common Stock : ¥ 100 millions
Ownership : 25.5%
Management, operation, and leasing of multipurpose facilities in Minato Mirai 21

Yokohama Izumi Corporation
Common Stock : ¥ 1,600 millions
Ownership : 52.5%
Ownership and leasing of a building complex in Minato Mirai 21

Harumi Corporation
Common Stock : ¥ 110 millions
Ownership : 18.18%
Management of Harumi Island Triton Square

Sumisho Tatemono Kaisha, Ltd.
Common Stock : ¥ 400 millions
Ownership : 100%
Sale and management of residential properties; house remodeling

Sumisho Estate Co., Ltd.
Common Stock : ¥ 20 millions
Ownership : 100%
Sale and management of residential properties in Sendai

Yasato Kosan Kaisha, Ltd.
Common Stock : ¥ 90 millions
Ownership : 100%
Owning and operating of golf course; Summit Golf Club (Ibaraki Pref.)

Sumisho Development Co., Ltd. (Thailand)
Common Stock : BAHT 15,000 thousands
Ownership : 98.83%
Leasing of apartment and office buildings

P.T. Summitas Property (Indonesia)
Common Stock : US\$ 12,500 thousands
Ownership : 40%
Leasing of office buildings

Financial & Logistics Business Unit

Digitalnonbank Co., Ltd.
Common Stock : ¥ 490 millions
Ownership : 65%
Financial services

Sumisho Finance Co., Ltd.
Common Stock : ¥ 100 millions
Ownership : 100%
Financial services

Sumisho Capital Management Co. (Cayman)
Common Stock : ¥ 200 millions
Ownership : 100%
Financial services

SC Bio Capital Co., Ltd.
Common Stock : ¥ 60 millions
Ownership : 100%
Financial services

Sumisho Materials Corporation
Common Stock : ¥ 200 millions
Ownership : 100%
Manufacturing, processing, and trading of precious metals and other products

All Trans Co., Ltd.
Common Stock : ¥ 200 millions
Ownership : 100%
Logistics service provider

Sumisho Logistics Co., Ltd.
Common Stock : ¥ 150 millions
Ownership : 100%
Logistics service provider

Sumitrans (Japan) Corporation
Common Stock : ¥ 400 millions
Ownership : 100%
Global logistics provider

Bluewell Corporation
Common Stock : ¥ 125 millions
Ownership : 100%
Agent for casualty insurance and life insurance

Summit Air Service Corporation
Common Stock : ¥ 100 millions
Ownership : 100%
Travel agency

Sumitomo Corporation Capital Asia Pte. Ltd. (Singapore)
Common Stock : US\$ 15,000 thousands
Ownership : 100%
Investment activities in venture businesses and financial services to group companies

Nava Nakorn Distribution Centre Co., Ltd. (Thailand)
Common Stock : BAHT 120,000 thousands
Ownership : 53.08%
Warehousing and distribution services

P.T. Indo Summit Logistics (Indonesia)
Common Stock : US\$ 5,480 thousands
Ownership : 81.32%
Warehousing and distribution services

Dragon Logistics Co., Ltd. (Vietnam)
Common Stock : DON 11,085,960 thousands
Ownership : 27%
Integrated logistics services

AR Summit L.L.C. (UAE)
Common Stock : DH 11,000 thousands
Ownership : 25%
Warehousing and distribution services

Shanghai Huayou International Forwarding Co., Ltd. (China)
Common Stock : RMB¥ 16,570 thousands
Ownership : 25%
Warehousing, distribution, and processing

Summit Logitech Korea, Limited (Korea)
Common Stock : W 1,500,000 thousands
Ownership : 75%
International logistics services

Bluewell Insurance (Singapore) Pte. Ltd. (Singapore)
Common Stock : S\$ 1,200 thousands
Ownership : 91%
Captive insurance company

Thang Long Industrial Park Corporation (Vietnam)
Common Stock : DON 210,214,086 thousands
Ownership : 58%
Development, sales, and operation of industrial estate in Vietnam

P.T. East Jakarta Industrial Park (Indonesia)
Common Stock : US\$ 8,550 thousands
Ownership : 60%
Sales, operation, and maintenance of industrial estate in Indonesia

Domestic

Fukusaki Coil Center Company, Ltd.
Common Stock : ¥ 300 millions
Ownership : 90%
Processing and sale of steel sheets

Sumisho Steel Sheets Works Co., Ltd.
Common Stock : ¥ 462 millions
Ownership : 89.18%
Fabrication and sale of steel products

Daiei Steel Pipe Co., Ltd.
Common Stock : ¥ 30 millions
Ownership : 93.17%
Sale of steel piping, especially seamless type

Nippon Katan Co., Ltd.
Common Stock : ¥ 886 millions
Ownership : 37.76%
Manufacture and sale of hardware for transmitters and automotive parts

Sumisho Textile Company, Ltd.
Common Stock : ¥ 350 millions
Ownership : 100%
Processing and sale of textile goods

Tortoise Co., Ltd.
Common Stock : ¥ 50 millions
Ownership : 80%
Processing and sale of interior goods and home furnishing to consumers' cooperatives

Sumisho Montblanc Co., Ltd.
Common Stock : ¥ 80 millions
Ownership : 87.5%
Processing and sale of work uniforms and related clothing products

SC Interior Co., Ltd.
Common Stock : ¥ 80 millions
Ownership : 100%
Sale and installation of office carpeting, curtains, and other interior products

Sumisho Estem Corporation
Common Stock : ¥ 350 millions
Ownership : 100%
Sale and management of residential properties

Osaka Hokko Development Co., Ltd.
Common Stock : ¥ 40 millions
Ownership : 100%
Ownership, leasing, management, and operations of shopping centers

SC Building Management Corporation
Common Stock : ¥ 40 millions
Ownership : 60%
Management and operation of office buildings

Reibi Corporation
Common Stock : ¥ 30 millions
Ownership : 48.23%
Management of buildings

SC Machinex Kobe Corporation
Common Stock : ¥ 50 millions
Ownership : 100%
Sale of machinery and equipment

Tamashima Sport Plaza Co., Ltd. Common Stock : ¥ 150 millions Ownership : 85% Sports club	Servilamina Summit Mexicana S.A. de C.V. (Mexico) Common Stock : US\$ 12,000 thousands Ownership : 100% Steel service center (processing and sale of steel sheets)	Sumitrans Corporation (U.S.) Common Stock : US\$ 3,082 thousands Ownership : 100% International intermodal transport
Summit Wool Spinners Limited (New Zealand) Common Stock : NZ\$ 10,000 thousands Ownership : 100% Manufacture and sale of wool yarn for carpets	Distributor Metals Corporation (U.S.) Common Stock : US\$ 372 thousands Ownership : 100% Sale of stainless steel materials	Presidio Venture Partners, L.L.C. (U.S.) Common Stock : US\$ 79,176 thousands Ownership : 100% Investments in IT ventures
Hokkaido Sekisan Kogyo Co., Ltd. Common Stock : ¥ 10 millions Ownership : 100% Macadam production	Premier Pipe, Inc. (U.S.) Common Stock : US\$ 3,501 thousands Ownership : 100% Investment in Total Premier Service	Summit Motor Management, Inc. (U.S.) Common Stock : US\$ 19,463 thousands Ownership : 100% Holding and management company of automotive dealerships
SC Machinex Tohoku Corporation Common Stock : ¥ 100 millions Ownership : 100% Sale of machinery and equipment	Clickstream Capital L.L.C. (U.S.) Common Stock : US\$ 7,164 thousands Ownership : 100% Investment in venture capital funds	Pressa Agri GP (U.S.) Common Stock : US\$ 2,835 thousands Ownership : 100% Sale of hay
Chukyo Kokan Co., Ltd. Common Stock : ¥ 80 millions Ownership : 100% Sale of steel piping and other steel materials	SCOA Capital LLC (U.S.) Common Stock : US\$ 14,003 thousands Ownership : 100% Investments in buyouts	Geo Focus LLC (U.S.) Common Stock : US\$ 3,800 thousands Ownership : 100% Development and sale of Train Trucking System
Summit FA System Co., Ltd. Common Stock : ¥ 10 millions Ownership : 92% Sale of various kinds of machines and equipment	Diversified CPC International, Inc. (U.S.) Common Stock : US\$ 25,000 thousands Ownership : 96.67% Mixing, refining, and sale of aerosol gases	Summit Biotech Inc. (U.S.) Common Stock : US\$ 1,300 thousands Ownership : 100% Business development and investment in biotech industry
Sumisho Chemicals & Plastics Nagoya Co., Ltd. Common Stock : ¥ 120 millions Ownership : 100% Wholesaling of general composite resins and chemicals	Summit Agriculture Co., Inc. (U.S.) Common Stock : US\$ 720 thousands Ownership : 100% Investment in carnation seedling production and sale	Summit Chemicals Europe GmbH (Germany) Common Stock : EURO 3,829 thousands Ownership : 100% Sale of fine chemicals
SC Machinex Chubu Corporation Common Stock : ¥ 150 millions Ownership : 100% Sale of machinery and equipment	Summit Pulp & Paper Inc. (U.S.) Common Stock : US\$ 5,000 thousands Ownership : 100% Processing and sale of wastepaper	Summit Pharmaceuticals Europe Ltd. (U.K.) Common Stock : STG £ 500 thousands Ownership : 100% Sale of pharmaceuticals products
Sumisho Material Chugoku Co., Ltd. Common Stock : ¥ 30 millions Ownership : 100% Sale of civil engineering and construction steel materials, pottery industry materials, and manufactured goods	Treadways Corporation (U.S.) Common Stock : US\$ 21,123 thousands Ownership : 100% Sale of tires	Sumitrans Europe GmbH (Germany) Common Stock : EURO 1,023 thousands Ownership : 100% Forwarding, logistics business
Sumisho Infra Service Co., Ltd. Common Stock : ¥ 40 millions Ownership : 67.5% Sale of civil engineering and construction materials	600 Third Avenue Associates (U.S.) Common Stock : US\$ 66,187 thousands Ownership : 100% Office building leasing	Summit Chemicals Asia Pte. Ltd. (Singapore) Common Stock : S\$ 1,500 thousands Ownership : 100% Trading of and investment in fine chemicals in ASEAN and west Asian regions
Sumisho Chemicals & Plastics Kyushu Co., Ltd. Common Stock : ¥ 120 millions Ownership : 100% Sale of chemicals and related materials in the Kyushu region	Summit Chemicals Holding Corp. (U.S.) Common Stock : US\$ 4,000 thousands Ownership : 100% Specialty chemicals trade and sales	Others
Sumisho Management Kyushu Co., Ltd. Common Stock : ¥ 30 millions Ownership : 100% Contracting of administrative work and accounting	Steel Summit Holdings, Inc. (U.S.) Common Stock : US\$ 14,501 thousands Ownership : 100% Steel service center (processing and sale of steel sheets)	Sumisho Administration Service Co., Ltd. Common Stock : ¥ 30 millions Ownership : 100% Personnel & general affair service
SC Machinex Kyushu Corporation Common Stock : ¥ 100 millions Ownership : 100% Sale of machinery and equipment	SCOA Residential L.L.C. (U.S.) Common Stock : US\$ 27,505 thousands Ownership : 100% Investment in house/apartment developments	SC Four-S Inc. Common Stock : ¥ 200 millions Ownership : 100% Information services, including the development of business software as a system integrator
Overseas	Atlantic Hills Corporation (U.S.) Common Stock : US\$ 19,000 thousands Ownership : 100% Residential area development	Sumitomo Shoji Financial Management Co., Ltd. Common Stock : ¥ 800 millions Ownership : 100% Financial services such as cash management, trade settlement, and accounting services to Sumitomo Corporation and its subsidiaries
AB Tube Processing, Inc. (U.S.) Common Stock : US\$ 2,600 thousands Ownership : 100% Tube processing for airbag inflators	SCOA Finance Company (U.S.) Common Stock : US\$ 3,000 thousands Ownership : 100% Financial services	Sumisho Lease Co., Ltd. Common Stock : ¥ 14,760 millions Ownership : 33.91% Leasing
Michigan Steel Processing, Inc. (U.S.) Common Stock : US\$ 12,284 thousands Ownership : 100% Steel service center (slitting and blanking of steel sheet for automotive industry)	SCOA Investment Corporation (U.S.) Common Stock : US\$ 30 thousands Ownership : 100% Financial investments	Sumitomo Corporation Capital Europe Plc (U.K.) Common Stock : US\$ 125,000 thousands STG £ 5,765 thousands Ownership : 100% Financial services to group companies
	Bluewell (U.S.A.), Incorporated (U.S.) Common Stock : US\$ 30 thousands Ownership : 100% Casualty insurance brokerage and reinsurance	

Global Network

ASIA

Beijing
Shanghai
Tianjin
Dalian
Shenyang
Qingdao
Nanjing
Chengdu
Guangzhou
Shenzhen
Xiamen
Hong Kong
Taipei
Kaohsiung
Seoul
Ulaanbaatar
Bangkok
Singapore
Manila
Kuala Lumpur
Kuching
Kota Kinabalu
Jakarta
Surabaya
Bandung
Medan

Hanoi
Ho Chi Minh City
Vung Tau
Danang
Phnom Penh
Vientiane
Yangon
New Delhi
Calcutta
Mumbai
Chennai
Bangalore
Karachi
Lahore
Islamabad
Colombo
Dhaka
Chittagong
Kathmandu

MIDDLE EAST

Bahrain
Teheran
Istanbul
Ankara
Abu Dhabi
Dubai
Amman
Damascus
Kuwait
Sanaa
Tel Aviv
Doha
Baghdad
Muscat
Riyadh
Jeddah
Alkhobar

EUROPE AND CIS

London
Oslo
Stockholm
Brussels
Rotterdam
Düsseldorf
Paris
Milan
Turin
Madrid
Barcelona
Athens
Warsaw
Krakow
Prague
Budapest

Moscow
Khabarovsk
Vladivostok
Yuzhno-Sakhalinsk
St. Petersburg
Kiev
Almaty
Tashkent
Bishkek
Ashgabat
Baku

AFRICA

Algiers
Casablanca
Cairo
Nairobi
Addis Ababa
Dar es Salaam
Lusaka
Harare
Antananarivo
Maputo
Luanda
Abidjan
Dakar
Johannesburg



NORTH AMERICA

New York
 Philadelphia
 Detroit
 Pittsburgh
 Washington, D.C.
 Atlanta
 Chicago
 Houston
 Denver
 Portland
 Los Altos
 Los Angeles
 Vancouver
 Calgary
 Toronto
 Montreal

CENTRAL AMERICA AND SOUTH AMERICA

Mexico City
 Monterrey
 Guatemala
 San Salvador
 Managua
 Havana
 Panama
 Quito
 Caracas
 Port of Spain
 Bogota
 Lima
 Buenos Aires
 Santiago
 Sao Paulo
 Rio de Janeiro
 Porto Alegre
 Recife

OCEANIA

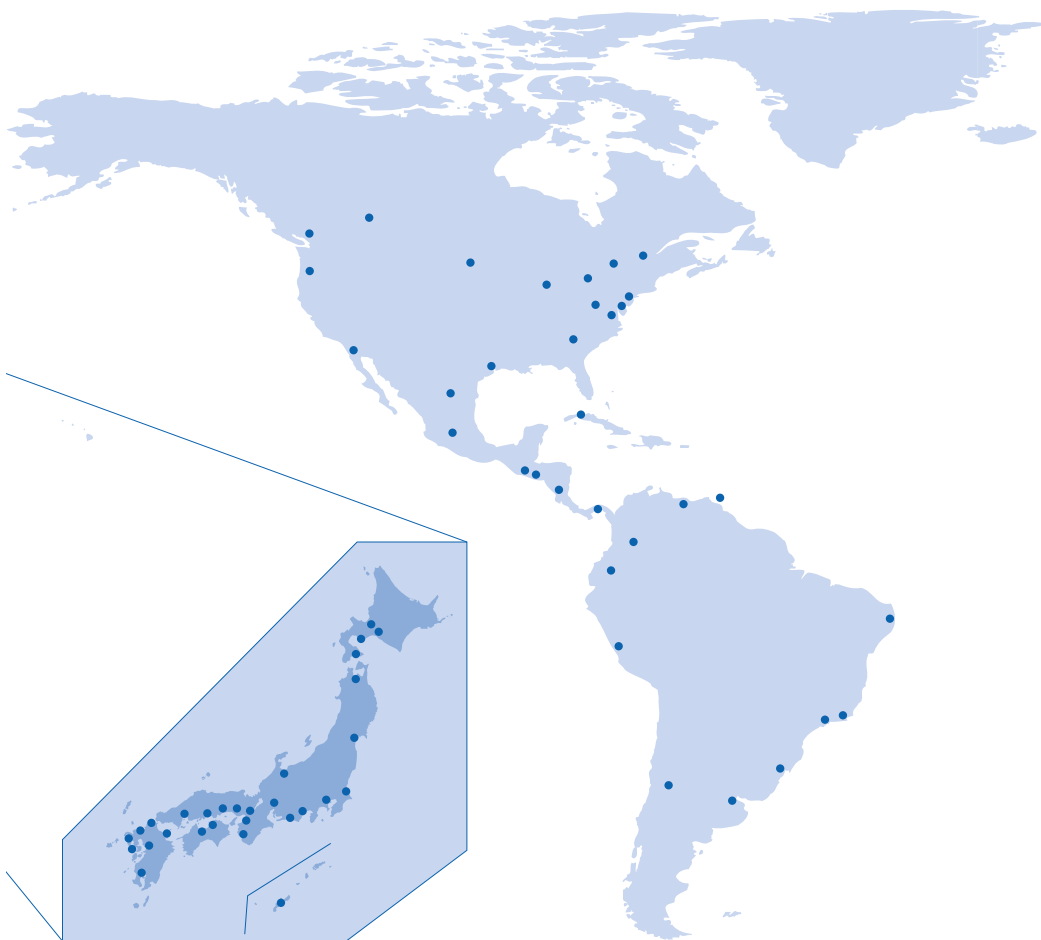
Sydney
 Melbourne
 Perth
 Brisbane
 Auckland

JAPAN

Tokyo
 Sapporo
 Chitose
 Muroran
 Hakodate
 Sendai
 Aomori
 Ibaraki
 Shizuoka
 Hamamatsu
 Nagoya
 Toyama
 Osaka

(As of July 1, 2002)

Kyoto
 Wakayama
 Kobe
 Himeji
 Okayama
 Takamatsu
 Niihama
 Hiroshima
 Kita-Kyushu
 Fukuoka
 Nagasaki
 Oshima
 Oita
 Kumamoto
 Kagoshima
 Naha



Overseas:	84 countries
Subsidiaries	41 / 81 locations
Branches	3 / 3 locations
Offices	65 / 65 locations
Total	149 locations

Japan:	
Headquarters	1 / 1 location
Subsidiaries	1 / 4 locations
Branches	3 / 20 locations
Offices	3 / 4 locations
Branch Office	1 / 1 location
Total	30 locations

Officers and Corporate Auditors

(As of July 1, 2002)



Kosaburo Morinaka
Executive Vice President

Atsushi Nishijo
Executive Vice President

Shigemi Hiranuma
Executive Vice President

Kenji Miyahara
Chairman of the
Board of Directors

Motoyuki Oka
President and CEO

Naoki Kuroda
Executive Vice President

CHAIRMAN OF THE BOARD OF DIRECTORS

Kenji Miyahara

PRESIDENT AND CEO

Motoyuki Oka

EXECUTIVE VICE PRESIDENTS

Shigemi Hiranuma

General Manager, Metal Products
Business Unit

Naoki Kuroda

General Manager, Mineral Resources &
Energy Business Unit

Atsushi Nishijo

General Manager for the Americas
Director & President,
Sumitomo Corporation of America

Kosaburo Morinaka

General Manager, Machinery & Electric
Business Unit

SENIOR MANAGING DIRECTORS

Masabumi Kimura

General Manager, Kansai Regional
Business Unit

Hironori Kato

General Manager, Chemical Business Unit
General Manager, Materials & Real Estate
Business Unit

Hideki Yamane

General Manager for China
Director & President,
Sumitomo Corporation (China)
Holding Ltd.

Kenichi Nagasawa

General Manager, Consumer Goods &
Service Business Unit

MANAGING DIRECTORS

Koji Nakajima

Deputy General Manager, Kansai Regional
Business Unit
General Manager, Textile Div.

Yuji Tamura

General Manager, Media, Electronics &
Network Business Unit

Takaaki Shibata

General Manager for Europe
Director & President,
Sumitomo Corporation Europe
Holding Limited
Chairman, President & Director,
Sumitomo Corporation Europe Plc

Shuji Hirose

General Manager, Transportation &
Construction Systems Business Unit

Kenzo Okubo

Assistant General Manager, Metal Products
Business Unit
General Manager, Iron & Steel Div., No.2

Tadahiko Mizukami

General Manager, Financial & Logistics
Business Unit

Shizuka Tamura

Assistant General Manager, Chemical
Business Unit
General Manager, Life Science Div.

Masaomi Bando

Assistant General Manager, Materials &
Real Estate Business Unit
General Manager, Construction &
Real Estate Div.
General Manager, General Construction
Development & Coordination Dept.

Noriaki Shimazaki

Responsible for Internal Auditing Dept.
Responsible for Human Resources
Development & Information Management
Group
Responsible for Financial Resources
Management Group
General Manager, Human Resources
Development & Information Management
Group

Nobuhide Nakaido

Assistant General Manager, Media,
Electronics & Network Business Unit
General Manager, Network Div.
Responsible for e-Business Dept.

DIRECTORS

Takehiro Yamanaka

General Manager, Tubular Products Div.

Katsuichi Kobayashi

General Manager, Chubu Regional
Business Unit

Susumu Kato

General Manager, Corporate Planning &
Coordination Office

Michio Ogimura

General Manager, Machinery &
Electric Systems Div.
General Manager, Power Project Div.

STANDING CORPORATE AUDITORS

Takashi Nomura

Isao Yamamoto

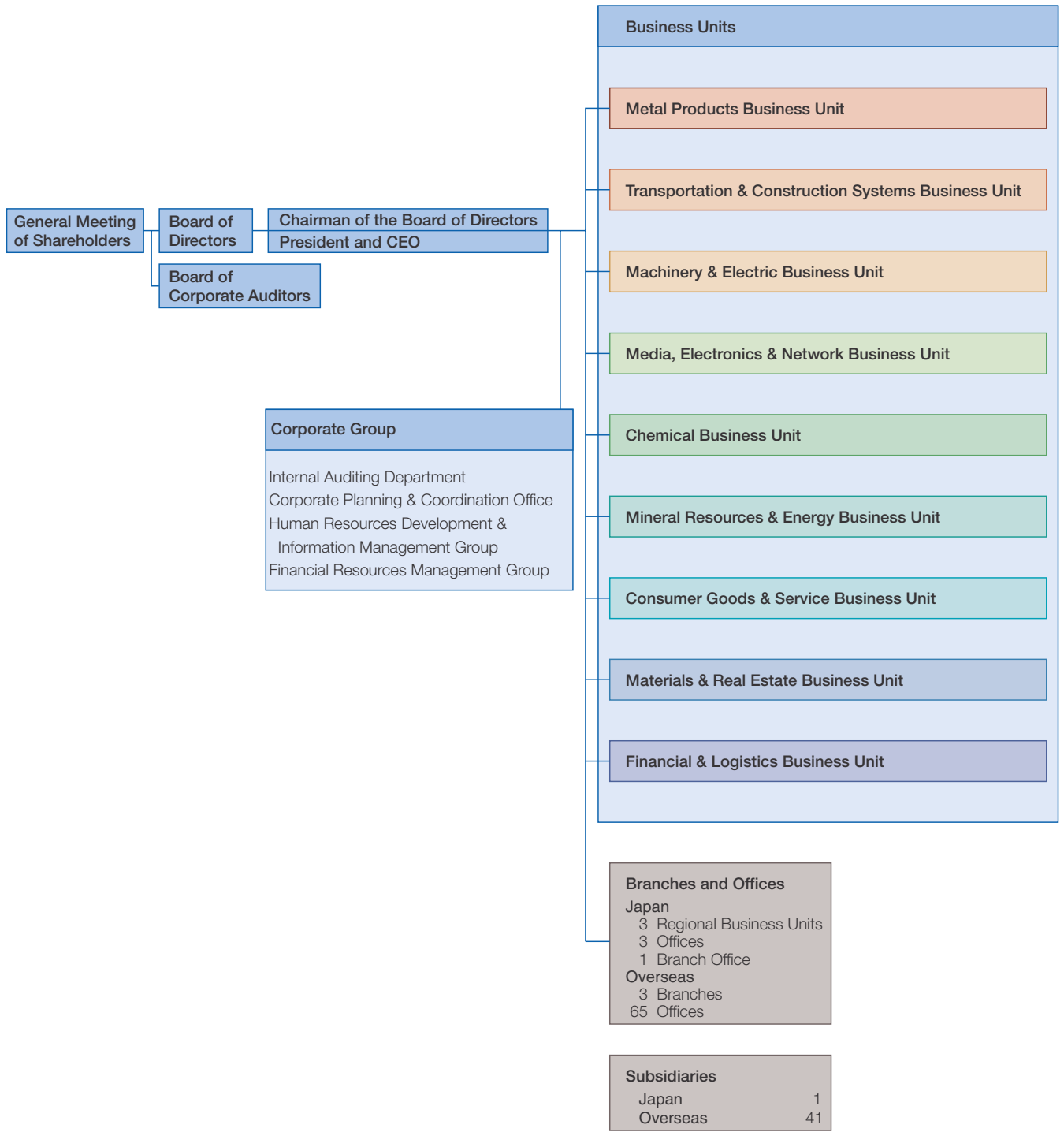
CORPORATE AUDITORS

Hiroshi Maeda

Itsuo Sonobe

Organization

(As of July 1, 2002)



Corporate Information

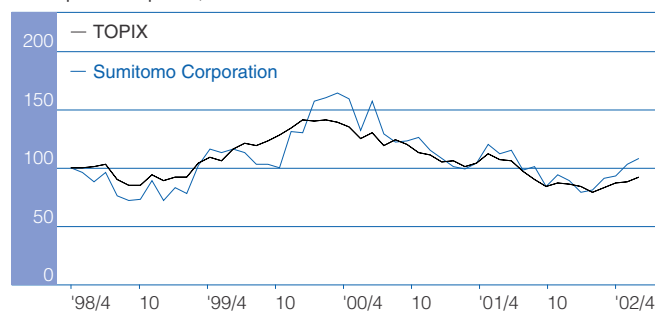
(As of March 31, 2002)

Date of Establishment:	December 24, 1919
Paid-in Capital:	¥169,439 million
Number of Offices* :	Overseas 149 (84 Countries)
	Domestic 30
	Total 179
Number of Consolidated Subsidiaries:	Overseas 338
	Domestic 185
Associated Companies:	Overseas 110
(equity method)	Domestic 87
	Total 720
Stock Listings:	Tokyo, Osaka, Nagoya, Fukuoka, Frankfurt
Fiscal Year ends:	March 31
Headquarters:	1-8-11, Harumi, Chuo-ku, Tokyo 104-8610, Japan
Number of Employees:	30,264 (Total including Consolidated Subsidiaries)
	4,829 (Non-Consolidated)
Homepage Address:	http://www.sumitomocorp.co.jp/english/

*As of July 1, 2002

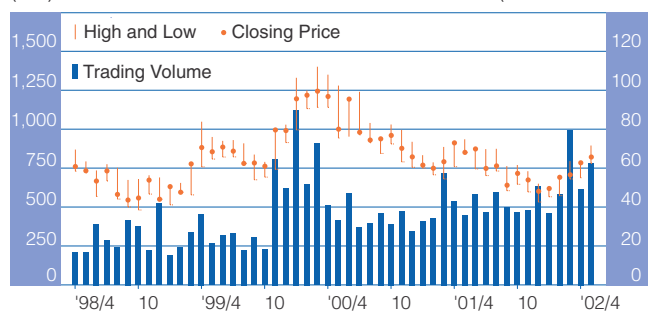
■ Stock Index

Share price on April 30, 1998=100



■ Stock Price and Trading Volume

(Yen) (Millions of Shares)



	'01/4	5	6	7	8	9	10	11	12	'02/1	2	3	4	5	
Stock Price (Yen)	High	920	935	883	872	874	763	770	730	650	634	704	795	789	895
	Low	759	851	745	702	731	605	646	597	532	566	573	680	688	781
Trading Volume	43,380	36,185	46,971	37,357	47,983	40,185	37,551	38,383	51,015	36,915	46,862	79,490	49,535	62,557	

Note: Above stock prices and trading volume are based on Tokyo Stock Exchange data.

For further information contact:

Investor Relations Dept., Sumitomo Corporation
 1-8-11, Harumi, Chuo-ku, Tokyo 104-8610, Japan
 Telephone: 81(3)-5166-3487
 Facsimile: 81(3)-5166-6292
 e-mail: ir@sumitomocorp.co.jp

