

## Business Operating Structure

### Directors, Corporate Auditors and Executive Officers

(As of August 1, 2015)



**Hiroyuki Inohara**  
Executive Vice  
President

**Naoki Hidaka**  
Executive Vice  
President

**Michihiko Kanegae**  
Executive Vice  
President

**Kazuo Ohmori**  
Chairman

**Kuniharu Nakamura**  
President and CEO

#### Directors

Chairman  
**Kazuo Ohmori**

President and CEO  
**Kuniharu Nakamura\***

Director  
**Naoki Hidaka\***

Director  
**Hiroyuki Inohara\***

Director  
**Michihiko Kanegae\***

Director  
**Hideki Iwasawa\***

Director  
**Masahiro Fujita\***

Director  
**Masao Tabuchi\***

Director  
**Hirohiko Imura\***

Director  
**Makoto Horie\***

Director  
**Akio Harada\*<sup>1</sup>**

Director  
**Kazuo Matsunaga\*<sup>1</sup>**

Director  
**Yayoi Tanaka\*<sup>1</sup>**

#### Corporate Auditors

Standing Corporate Auditor  
(Full-Time)  
**Takahiro Moriyama**

Corporate Auditor (Full-Time)  
**Nobuhiko Yuki**

Corporate Auditor  
(Certified Public Accountant)  
**Tsuguoki Fujinuma\*<sup>2</sup>**

Corporate Auditor (Lawyer)  
**Mutsuo Nitta\*<sup>2</sup>**

Corporate Auditor (Lawyer)  
**Haruo Kasama\*<sup>2</sup>**

Notes: 1. Representative Directors are indicated by an asterisk (\*).  
2. Outside Directors are indicated by an asterisk (\*1).  
Outside Corporate Auditors are indicated by an asterisk (\*2).

## Executive Officers

### ■ President and CEO

#### Kuniharu Nakamura

### ■ Executive Vice Presidents

#### Naoki Hidaka

General Manager, Transportation & Construction Systems Business Unit

#### Hiroyuki Inohara

Chief Financial Officer

#### Michihiko Kanegae

General Manager, Environment & Infrastructure Business Unit

### ■ Senior Managing Executive Officers

#### Masaru Nakamura

Responsible for Kansai Region; General Manager, Kansai Office

#### Hideki Iwasawa

Chief Administration Officer

#### Masahiro Fujita

General Manager, Mineral Resources, Energy, Chemical & Electronics Business Unit

#### Koichi Takahata

Assistant CFO, Accounting; General Manager, Accounting Controlling Dept.

### ■ Managing Executive Officers

#### Kiyoshi Ogawa

General Manager, Internal Auditing Dept.

#### Masao Sekiuchi

General Manager for Asia & Oceania; CEO of Sumitomo Corporation Asia & Oceania Group; President and CEO, Sumitomo Corporation Asia & Oceania Pte. Ltd.

#### Masato Sugimori

Assistant CFO, Risk Management

#### Akira Satake

Assistant CFO, Finance

#### Hiroki Inoue

General Manager for East Asia; CEO of Sumitomo Corporation China Group; General Manager, Sumitomo Corporation (China) Holding Ltd.

#### Masao Tabuchi

Chief Strategy Officer, Managing Executive Officer, Responsible for Chubu Region

#### Hirohiko Imura

General Manager, Media, Network, Lifestyle Related Goods & Services Business Unit

#### Kiyoshi Sunobe

General Manager for Europe, Middle East, Africa & CIS; General Manager for Europe; CEO of Sumitomo Corporation Europe Group; Managing Director, Sumitomo Corporation Europe Holding Limited; Chairman and Managing Director, Sumitomo Corporation Europe Limited

#### Makoto Horie

General Manager, Metal Products Business Unit

#### Toshikazu Nambu

General Manager for the Americas; President and CFO of Sumitomo Corporation of Americas Group; Director and President of Sumitomo Corporation of Americas

#### Masayuki Hyodo

General Manager, Corporate Planning & Coordination Dept.

### ■ Executive Officers

#### Fumihiro Koba

General Manager, Steel Sheet & Construction Steel Products Division

#### Shoichi Kato

President, KI Fresh Access, Inc.

#### Atsushi Shinohara

President and CEO, Jupiter Shop Channel Co., Ltd.

#### Shingo Ueno

General Manager, Energy Division

#### Michihiko Hosono

Assistant CAO, General Affairs & Legal

#### Akira Tsuyuguchi

Senior Managing Executive Officer, Sumitomo Mitsui Auto Service Company, Limited

#### Hiroyuki Takai

President and CEO, Sumitomo Corporation Global Research Co. Ltd.

#### Takeshi Saraoka

General Manager, Planning & Administration Dept., Mineral Resources, Energy, Chemical & Electronics Business Unit

#### Shuichi Suzuki

General Manager, Tubular Products Division

#### Hideo Ogawa

General Manager, Planning & Administration Dept., Media, Network, Lifestyle Related Goods & Services Business Unit

#### Daisuke Mikogami

Director, Executive Vice President, Jupiter Telecommunications Co., Ltd.

#### Shoichiro Oka

General Manager, Automobile Division, No. 2

#### Tsuyoshi Oikawa

General Manager, Mineral Resources Division No. 2

#### Tsutomu Akimoto

General Manager, Global Power Infrastructure Business Division

#### Masato Ishida

Assistant General Manager for Europe, Middle East, Africa & CIS; General Manager for Middle East; Managing Director, Sumitomo Corporation Middle East FZE

#### Takeshi Murata

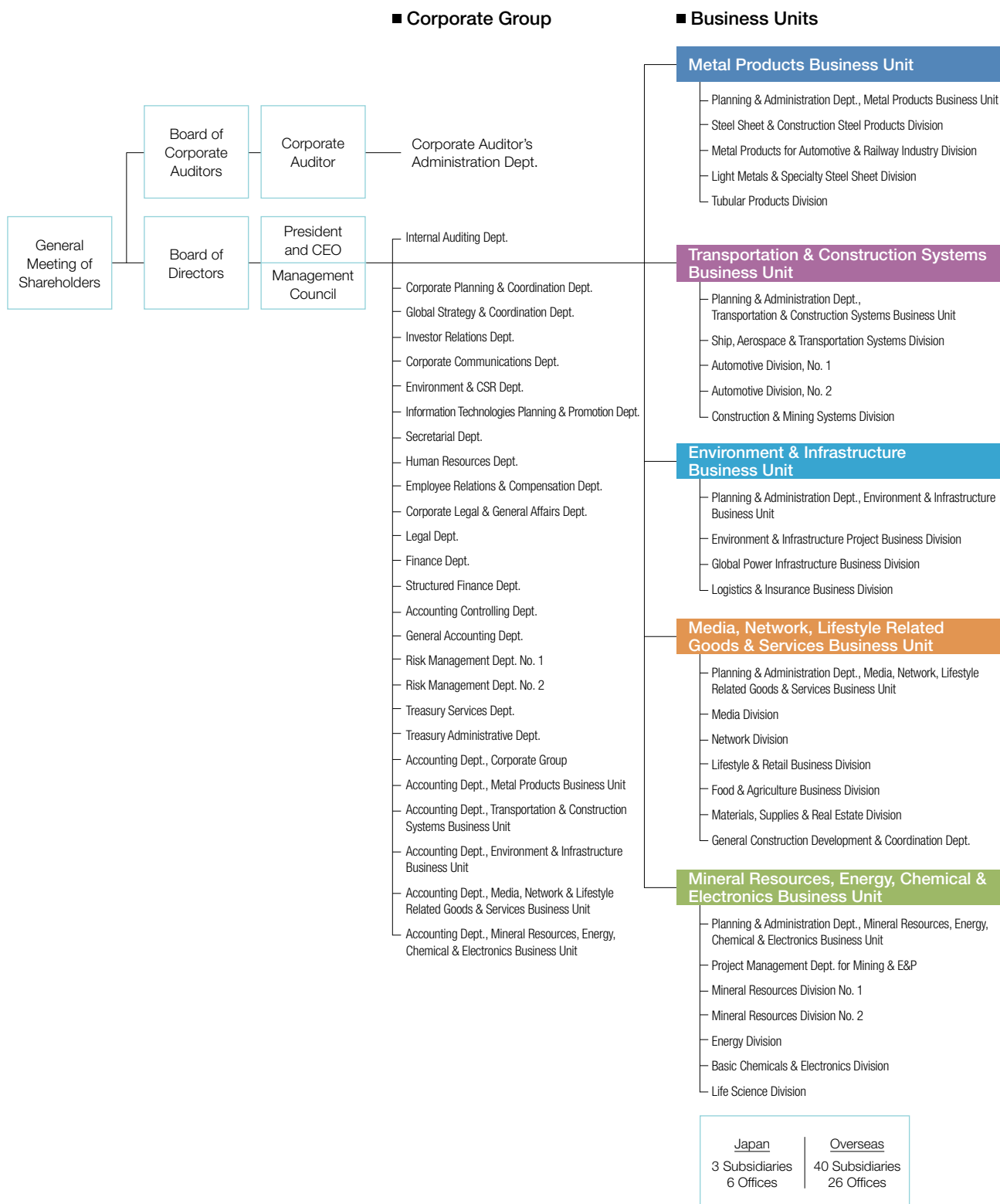
General Manager, Ship, Aerospace & Transportation System Division

#### Nobuki Ando

General Manager, Materials, Supplies & Real Estate Division

# Organization

(As of July 1, 2015)



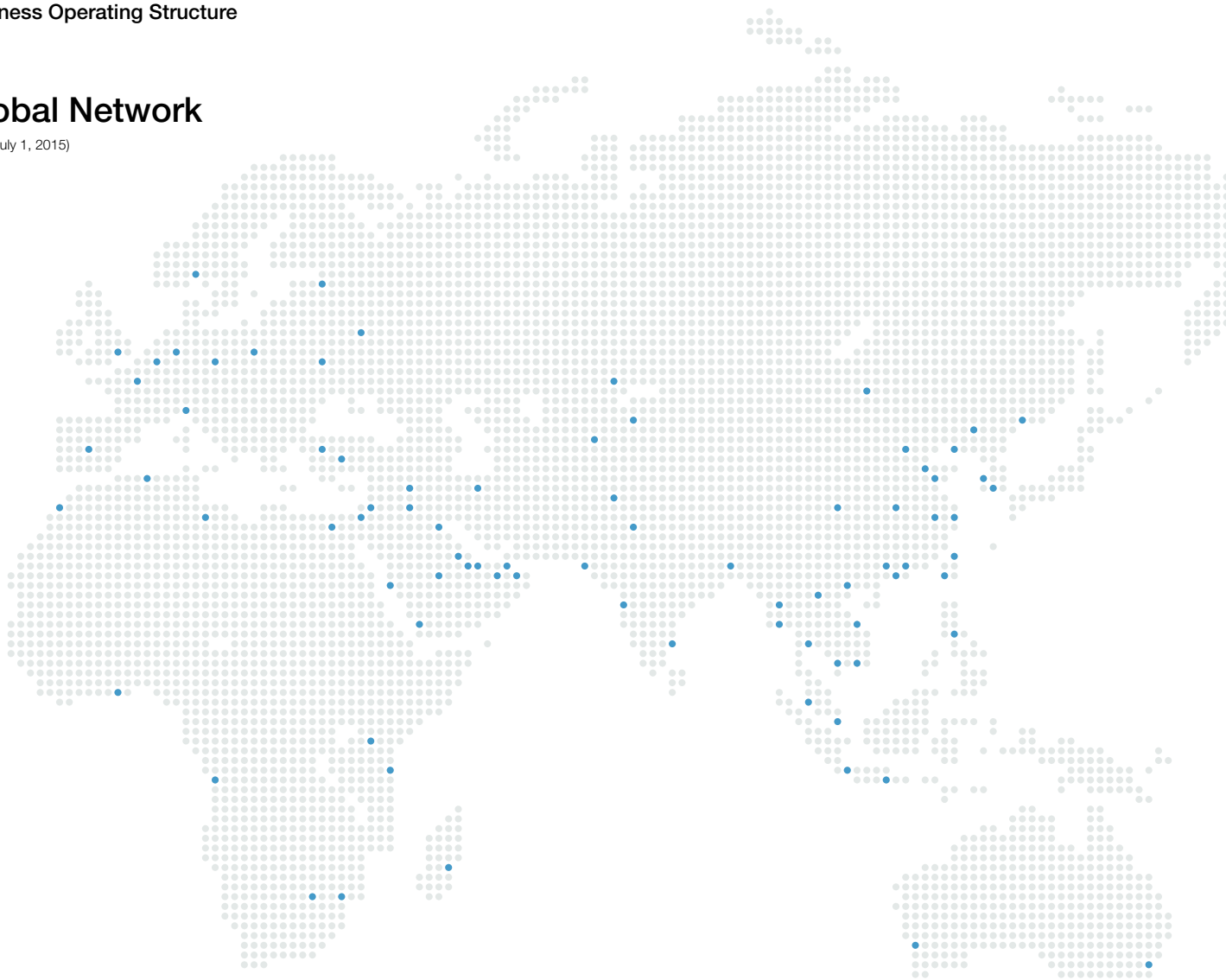
# Regional Subsidiaries

(As of July 1, 2015)

Region	Name of Subsidiary	Location
Japan	Sumitomo Corporation Kyushu Co., Ltd.	Fukuoka
	Sumitomo Corporation Hokkaido Co., Ltd.	Sapporo
	Sumitomo Corporation Tohoku Co., Ltd.	Sendai
East Asia	Sumitomo Corporation (China) Holding Ltd.	Beijing
	Sumitomo Corporation (China) Limited	Beijing
	Sumitomo Corporation (Shanghai) Limited	Shanghai
	Sumitomo Corporation (Tianjin) Ltd.	Tianjin
	Sumitomo Corporation (Qingdao) Ltd.	Qingdao
	Sumitomo Corporation (Guangzhou) Ltd.	Guangzhou
	Shenzhen Sumitomo Corporation Ltd.	Shenzhen
	Sumitomo Corporation (Hong Kong) Limited	Hong Kong
	Sumitomo Corporation Taiwan Ltd.	Taipei
Sumitomo Corporation Korea Ltd.	Seoul	
Southeast and Southwest Asia	Sumitomo Corporation Asia & Oceania Pte. Ltd.	Singapore
	Sumitomo Corporation Thailand, Ltd. Sumi-Thai International Limited	Bangkok
	Sumur Cahaya Sdn. Bhd.	Kuala Lumpur
	Sumitomo Corporation of the Philippines	Manila
	PT. Sumitomo Indonesia	Jakarta
	Sumitomo Corporation Vietnam LLC	Hanoi
	Sumitomo Corporation India Private Limited	New Delhi
Oceania	Sumitomo Australia Pty Ltd	Sydney
Europe	Sumitomo Corporation Europe Holding Limited	London
	Sumitomo Corporation Europe Limited	London
	Sumitomo Corporation España S.A.	Madrid
	Sumitomo Deutschland GmbH	Dusseldorf
	Sumitomo France S.A.S. Sumitomo Benelux S.A./N.V.	Paris Brussels
Africa	Sumitomo Corporation Africa Pty Ltd	Johannesburg
Middle East	Sumitomo Corporation Middle East FZCO	Dubai
	Sumitomo Corporation Iran, Ltd.	Teheran
	Sumitomo Corporation Dis Ticaret A.S.	Istanbul
	Sumitomo Corporation Saudi Arabia Ltd.	Alkhobar
CIS	Sumitomo Corporation (Central Eurasia) LLC	Moscow
North America	Sumitomo Corporation of Americas	New York
	Sumitomo Canada Limited	Calgary
Central America and South America	Sumitomo Corporation de Mexico S.A. de C.V.	Mexico City
	Sumitomo Corporation do Brasil S.A.	Sao Paulo
	Sumitomo Corporation del Ecuador S.A.	Quito
	Sumitomo Corporation de Venezuela, S.A.	Caracas
	Sumitomo Corporation Colombia S.A.S.	Bogota
	Sumitomo Corporation del Peru S.A. Sumitomo Corporation Argentina S.A. Sumitomo Corporation (Chile) Limitada	Lima Buenos Aires Santiago

# Global Network

(As of July 1, 2015)



## EUROPE

- London
- Oslo
- Praha
- Warsaw
- Milan
- Madrid
- Dusseldorf
- Paris
- Brussels

## AFRICA

- Algiers
- Casablanca
- Johannesburg
- Nairobi
- Dar es Salaam
- Luanda
- Antananarivo
- Accra
- Maputo

## MIDDLE EAST

- Dubai
- Teheran
- Istanbul
- Ankara
- Alkhobar
- Riyadh
- Jeddah
- Abu Dhabi
- Muscat
- Baghdad
- Erbil
- Doha
- Kuwait
- Bahrain
- Sanaa
- Cairo
- Amman
- Damascus
- Tripoli

## CIS

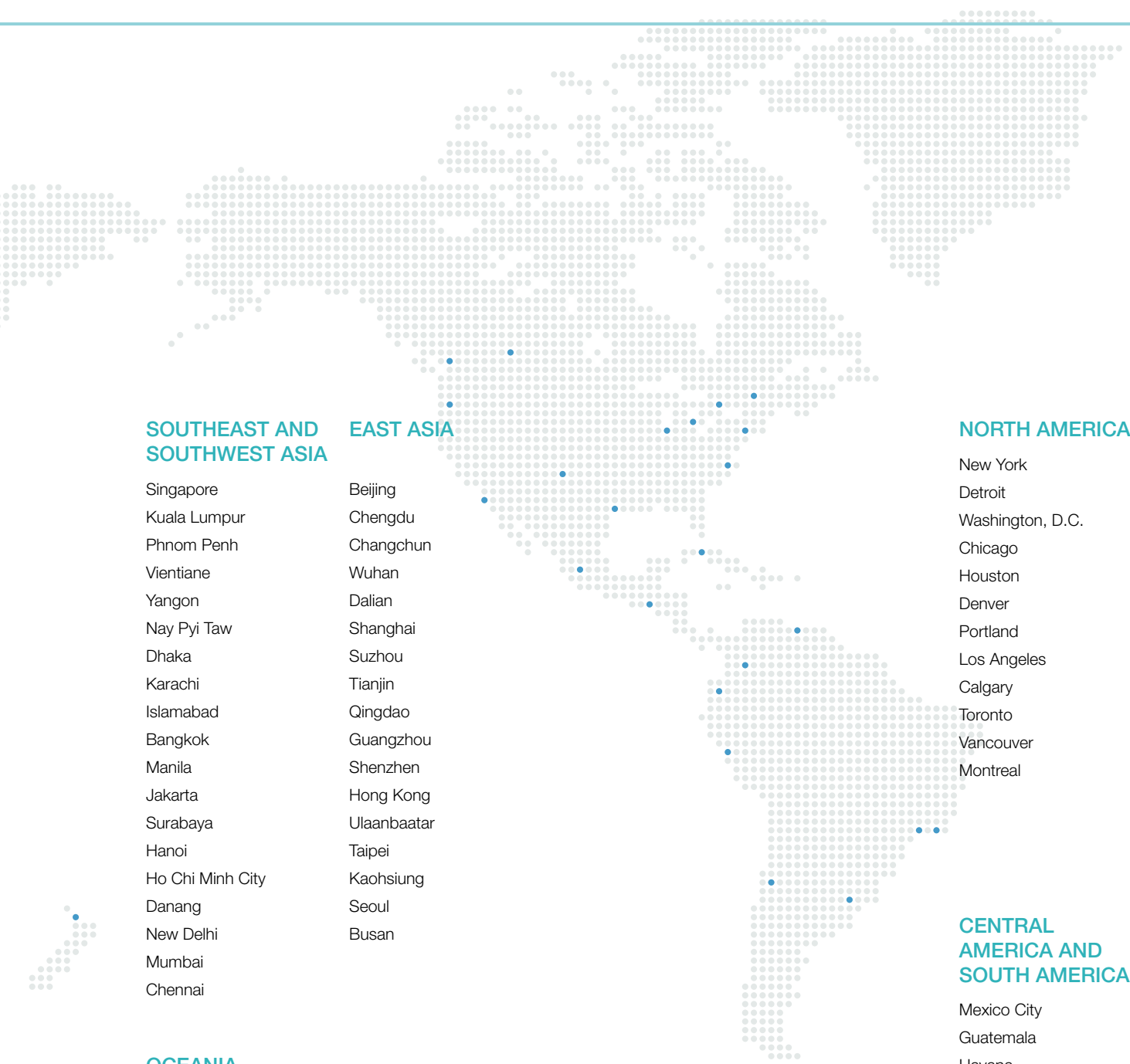
- Moscow
- Vladivostok
- St. Petersburg
- Kiev
- Almaty
- Astana
- Tashkent

### Overseas: 66 countries

40 Subsidiaries / 83 locations
2 Branches / 2 locations
1 Sub-Branch / 1 location
26 Offices / 26 locations
<b>Total 112 locations</b>

### Japan:

Headquarters
3 Subsidiaries / 9 locations
6 Offices / 13 locations
<b>Total 23 locations</b>



### SOUTHEAST AND SOUTHWEST ASIA

- Singapore
- Kuala Lumpur
- Phnom Penh
- Vientiane
- Yangon
- Nay Pyi Taw
- Dhaka
- Karachi
- Islamabad
- Bangkok
- Manila
- Jakarta
- Surabaya
- Hanoi
- Ho Chi Minh City
- Danang
- New Delhi
- Mumbai
- Chennai

### EAST ASIA

- Beijing
- Chengdu
- Changchun
- Wuhan
- Dalian
- Shanghai
- Suzhou
- Tianjin
- Qingdao
- Guangzhou
- Shenzhen
- Hong Kong
- Ulaanbaatar
- Taipei
- Kaohsiung
- Seoul
- Busan

### NORTH AMERICA

- New York
- Detroit
- Washington, D.C.
- Chicago
- Houston
- Denver
- Portland
- Los Angeles
- Calgary
- Toronto
- Vancouver
- Montreal

### CENTRAL AMERICA AND SOUTH AMERICA

- Mexico City
- Guatemala
- Havana
- Sao Paulo
- Rio de Janeiro
- Quito
- Caracas
- Bogota
- Lima
- Buenos Aires
- Santiago

### OCEANIA

- Sydney
- Melbourne
- Perth
- Auckland

### JAPAN

- Tokyo
- Sapporo
- Muroran
- Sendai
- Niigata
- Hamamatsu
- Nagoya
- Osaka
- Kobe
- Hiroshima
- Imabari
- Takamatsu
- Niihama
- Kita-Kyushu
- Fukuoka
- Nagasaki
- Kagoshima
- Naha



## Business Operating Structure

## Principal Subsidiaries and Associated Companies

(As of March 31, 2015)

		Subsidiary/ Associated Company	Main Business	
<b>Metal Products Business Unit</b>				
<b>Japan</b>	Hokkaido Shearing Kaisha, Ltd.	Sub.	Shearing, slitting, and sale of steel sheets	
	KS Summit Steel Co., Ltd.	Sub.	Shearing, slitting, and sale of steel sheets	
	Mazda Steel Co., Ltd.	Ass.	Shearing, slitting, and sale of steel sheets	
	Nippon Katan Co., Ltd.	Sub.	Manufacture and sale of power line hardware	
	SC Pipe Solutions Co., Ltd.	Sub.	Sale of steel piping and other steel products	
	SC Tubulars Co., Ltd.	Sub.	Sale of specialty tubular products	
	Sofuku-koki Co., Ltd.	Sub.	Manufacture and sale of steel racks	
	Sumisho Metalex Corporation	Sub.	Sale of non-ferrous metal products, materials for home heat solution	
	Sumisho Specialty Steel Corporation	Sub.	Stock, sale, and processing of specialty steel	
	Sumisho Tekko Hanbai Co., Ltd.	Sub.	Sale of steel products	
	Summit Steel Co., Ltd.	Sub.	Shearing, slitting, and sale of steel sheets	
	Summit Steel Corporation	Sub.	Sale of metal products	
	<b>Asia</b>	Eastern Steel Industry Corporation (Cambodia)	Sub.	Manufacture and sale of galvanized steel sheets
Dong Guan Summit Metal Products Co., Ltd. (China)		Sub.	Shearing, slitting, and sale of steel sheets	
Foshan Summit Nikka Mold & Metal Products Co., Ltd. (China)		Sub.	Stock, sale, and processing of tool steel	
Shanghai Nikka Metal Products Co., Ltd. (China)		Sub.	Stock, sale, and processing of tool steel	
Tianjin Hua Zhu Metal Products Co., Ltd. (China)		Sub.	Shearing, slitting, and sale of steel sheets	
Wuxi Summit-Bao Metal Products Co., Ltd. (China)		Sub.	Shearing, slitting, and sale of steel sheets	
Zhongshan Nomura Steel Product Co., Ltd. (China)		Sub.	Shearing, slitting, and sale of steel sheets	
India Steel Summit Private Limited (India)		Sub.	Shearing and slitting of steel plates and manufacture of metal stamping parts and dies	
P.T. Summit Electrical Steel Processing Indonesia (Indonesia)		Sub.	Core cutting, slitting, and sale of electrical steel sheets	
P.T. Super Steel Karawang (Indonesia)		Sub.	Shearing, slitting, and sale of steel sheets	
Steel Centre Malaysia Sdn. Bhd. (Malaysia)		Sub.	Shearing, slitting, and sale of steel sheets	
Sumiputeh Steel Centre Sdn. Bhd. (Malaysia)		Ass.	Shearing, slitting, and sale of steel sheets	
Calamba Steel Center, Inc. (Philippines)		Sub.	Shearing, slitting, and sale of steel sheets	
Mactan Steel Center, Inc. (Philippines)		Sub.	Shearing, slitting, and sale of steel sheets	
Mason Metal Industry Co., Ltd. (Taiwan)		Sub.	Shearing, slitting, and sale of steel sheets	
CS Metal Co., Ltd. (Thailand)		Ass.	Shearing, slitting, and sale of steel sheets	
CS Non-Ferrous Center Co., Ltd. (Thailand)		Ass.	Shearing, slitting, and sale of non-ferrous metal sheets	
Sumisho Metal (Thailand) Co., Ltd. (Thailand)		Sub.	Shearing, slitting, and sale of steel sheets	
Hanoi Steel Center Co., Ltd. (Vietnam)		Sub.	Shearing, slitting, and sale of steel sheets	
Saigon Steel Service & Processing Co., Ltd. (Vietnam)		Ass.	Shearing, slitting, and sale of steel sheets	
<b>Middle East</b>		Summit Steel (M.E.) FZCO (UAE)	Sub.	Trade of various steel products and shearing, slitting, and sale of steel sheets
<b>Europe</b>		Steel Center Europe, S.R.O. (Czech)	Ass.	Shearing, slitting, and sale of steel sheets
		Kienle + Spiess GmbH (Germany)	Sub.	Manufacturing and sale of motor cores
<b>The Americas</b>	Servilamina Summit Mexicana S.A. de C.V. (Mexico)	Sub.	Shearing, slitting, and sale of steel sheets	
	Arkansas Steel Associates LLC (U.S.)	Ass.	Steel mini mill (manufacture of railroad tie plates)	
	SC Pipe Services Inc. (U.S.)	Sub.	Investment in pipe manufacturing and sales company in the U.S.	
<b>Oceania</b>	SC Metal Pty. Ltd. (Australia)	Sub.	Investment in aluminum smelting operation in Australia	

	Subsidiary/Associated Company	Main Business
<b>Transportation &amp; Construction Systems Business Unit</b>		
<b>Japan</b>	KIRIU Corporation	Sub. Automotive components manufacturer (disc rotors, brake drums, etc.)
	Oshima Shipbuilding Co., Ltd.	Ass. Shipbuilding
	SC Machinery & Service Co., Ltd.	Sub. Sales of equipment for automotive industries and factory automation products
	SC-ABeam Automotive Consulting	Sub. Automotive industry-focused consulting
	SMBC Aviation Capital Japan Co., Ltd.	Ass. Aircraft operating lease
	Sumisho Aero-Systems Corporation	Sub. Sale of aerospace equipment
	Sumisho Machinery Trade Corporation	Sub. Trading of machinery, equipment, and automobiles
	Sumisho Marine Co., Ltd.	Sub. Ship-related operational services
	Sumitomo Mitsui Auto Service Company, Limited	Ass. Leasing of motor vehicles
	Sumitomo Mitsui Finance and Leasing Company, Limited	Ass. Finance and lease
	<b>Asia</b>	Chongqing Sumisho Yunxin Logistics Co., Ltd. (China)
Fujiwa Machinery Industry (Kunshan) Co., Ltd. (China)		Ass. Automotive components manufacturing and sales (brake disc, brake drum, knuckle, etc.)
SC Construction Machinery (Shanghai) Corporation (China)		Sub. Sale, rental, and other services of construction equipment
Shanghai Baosteel Summit Auto Trading Co., Ltd. (China)		Ass. Dealership of motor vehicles
J.J. IMPEX (Dehli) PRIVATE LIMITED (India)		Ass. Maruti Suzuki Authorized After-sales Service station
Kubota Agricultural Machinery India Private Ltd. (India)		Ass. Sale of tractors, combines and rice transplanters in India
SML Isuzu Limited (India)		Ass. Commercial vehicle manufacturer
P.T. Asuransi Sumit Oto (Indonesia)		Sub. Insurance for automobiles and motorcycles
P.T. Oto Multiartha (Indonesia)		Sub. Financing of automobiles
P.T. Summit Oto Finance (Indonesia)		Sub. Financing of motorcycles
P.T. Traktor Nusantara (Indonesia)		Ass. Forklift hire and rental. Sale and service of forklift, farm tractor and industrial equipment
Summit SPA Motors, Ltd. (Myanmar)		Sub. Aftersales service for Hino Motors trucks and busses
Sumisho Motor Finance Corporation (Philippines)		Ass. Financing of motorcycles
Dunlop Tire Thailand Co., Ltd. (Thailand)		Ass. Wholesale of tires to the replacement tire market in Thailand
Summit Auto Management (Thailand)		Sub. Holding and management company of automotive dealership and finance companies
Summit Capital Leasing Co., Ltd. (Thailand)		Sub. Financing of motorcycles
HAL Vietnam Co., Ltd (Vietnam)		Ass. Manufacturing and sale of aluminum casting
Toyota Can Tho Company Ltd. (Vietnam)		Ass. Dealership of Toyota motor vehicles
Toyota Giai Phong Company (Vietnam)		Ass. Dealership of Toyota motor vehicles
Toyota Ly Thuong Kiet (Vietnam)		Sub. Dealership of Toyota motor vehicles
<b>Middle East</b>		SAS Automotive Services Co., Ltd. (Iraq)
	Summit Auto Trade Facilities (Jordan)	Sub. Financing of automobiles
	ABDUL LATIF JAMEEL SUMMIT COMPANY LIMITED (Saudi Arabia)	Ass. Operates dealership of Komatsu construction equipment and others
	Shaheen Tyres Company L.L.C. (UAE)	Ass. Import and sale of tires in the UAE
<b>Europe</b>	SMBC Aviation Capital Limited (Ireland)	Ass. Aircraft operating lease
	Sumisho Aero Engine Lease B.V. (Netherlands)	Sub. Aircraft engine lease
	Dunlop Tire CIS, LLC (Russia)	Ass. Import and sale of tires in CIS (except Ukraine/Moldova)
	Sumitec International, Ltd. (Russia)	Sub. Sale and after-sales service of construction, mining and material handling equipment
	Summit Motors (Madivostok) (Russia)	Sub. Dealership of Toyota motor vehicles
	TECNOLOGÍA PARA LA CONSTRUCCION Y MINERIA S.L. (Spain)	Sub. Holding and management company of Komatsu distributor and other business
	Toyota Canarias, S.A. (Canary Islands, Spain)	Sub. Import and wholesale of Toyota and Lexus motor vehicles and parts
	Summit Motors Ukraine (Ukraine)	Sub. Dealership of Toyota and Lexus motor vehicles
	Toyota Ukraine (Ukraine)	Sub. Import and wholesale of Toyota and Lexus motor vehicles and parts
<b>The Americas</b>	SMS Construction and Mining Systems Inc. (Canada)	Sub. Holding and management company of Komatsu distributor and other business
	SMS Equipment Inc. (Canada)	Sub. Operates dealership of Komatsu construction, mining, and other equipment
	HAL Aluminum Mexico, S.A. de C.V. (Mexico)	Ass. Manufacturing and sale of aluminum casting
	Hirotec Mexico, S.A. de C.V. (Mexico)	Ass. Manufacturing and sale of body stamping assembly and exhaust system
	Mazda de Mexico Vehicle Operation (Mexico)	Ass. Manufacturing and sale of Mazda motor vehicles
	Linder Industrial Machinery Company (U.S.)	Sub. Operates dealership of Komatsu construction equipment and others
	SMS International Corporation (U.S.)	Sub. Holding and management company of Komatsu distributor and other business
	Summit Auto Group Holding, LLC (U.S.)	Sub. Holding and management company of automotive dealerships
	Sunstate Equipment Co., LLC (U.S.)	Sub. Rental of construction equipment
	TBC Corporation (U.S.)	Sub. Retail and wholesale of tires
<b>Oceania</b>	Sumitomo Rubber Australia Pty. Ltd. (Australia)	Ass. Import and wholesale of tires
	Summit Auto Lease Australia Pty Limited (Australia)	Ass. Motor vehicle leasing to corporate customers
<b>Africa</b>	Toyota Libya FZC (Libya)	Sub. Import and wholesale of Toyota motor vehicles and parts



	Subsidiary/Associated Company	Main Business
<b>Environment &amp; Infrastructure Business Unit</b>		
<b>Japan</b>	Bluewell Insurance Brokers Ltd.	Sub. Broker for casualty insurance and re-insurance
	MMS Thilawa Development Company Limited	Ass. Investment in Special Economic Zone Development in Myanmar
	SC Hiroshima Energy Corporation	Sub. Electricity and steam supply (energy service provider)
	Sumisho Global Logistics Co., Ltd.	Sub. Global logistics provider
	Sumisho Insurance Corporation	Sub. Agent for casualty insurance and life insurance
	Sumisho Machinery Trade Corporation	Sub. Trading of machinery, equipment, and automobiles in Japan
	Sumitomo Shoji Machinex Co., Ltd.	Sub. Sale of machinery and equipment
	Summit Air Service Corporation	Sub. Travel agency
	Summit Energy Corporation	Sub. Power retail and wind power generation business in Japan
	Tomra Japan Limited	Ass. Collection and recycling of used beverage containers
<b>Asia</b>	Nanjing CMSCL Co., Ltd. (China)	Ass. Automobile related transportation in China
	Sumisho Global Logistics (China) Co., Ltd. (China)	Sub. Warehousing and distribution services in China
	Eastern Water Co., Limited (Hong Kong)	Ass. Development and investment of water business in China
	P.T. East Jakarta Industrial Park (Indonesia)	Ass. Development, sales, and operation of industrial estate in Indonesia
	PT. Indomobil Summit Logistics (Indonesia)	Ass. Automobile related logistics in Indonesia
	PT Sumisho Global Logistics Indonesia (Indonesia)	Sub. Warehousing and distribution services in Indonesia
	PT Supreme Energy Muara Laboh (Indonesia)	Ass. Power generation and supply of geothermal electricity in Indonesia
	PT Supreme Energy Rajabasa (Indonesia)	Ass. Power generation and supply of geothermal electricity in Indonesia
	Thilawa Global Logistics Co., Ltd. (Myanmar)	Sub. Warehousing and distribution services in Myanmar
	First Philippine Industrial Park, Inc. (Philippines)	Ass. Development, sales, and operation of industrial estate in Philippines
	Sumisho Global Logistics (Thailand) Co., Ltd. (Thailand)	Sub. Warehousing and distribution services in Thailand
	Summit Sunrise Energy Co., Ltd. (Thailand)	Sub. Investment company for power plant asset in Thailand
	Dragon Logistics Co., Ltd. (Vietnam)	Ass. Warehousing and distribution services in Vietnam
	Mekong Energy Company Ltd. (Vietnam)	Ass. Power generation and supply of electricity in Vietnam
	Thang Long Industrial Park Corporation (Vietnam)	Sub. Development, sales, and operation of industrial estate in Vietnam
	Thang Long Industrial Park II Corporation (Vietnam)	Sub. Development, sales, and operation of industrial estate in Vietnam
<b>Middle East</b>	Hidd Power Company (Bahrain)	Ass. Power generation and sea water desalination project company in Bahrain
	Shamal Az-Zour Al-Oula K.S.C. (Kuwait)	Ass. Power generation and sea water desalination project company in Kuwait
	Muscat City Desalination Company S.A.O.C. (Oman)	Ass. Sea Water Desalination Project Company in Oman
	Sahara Cooling Limited (UAE)	Ass. District cooling project company in the UAE
	Shuweihat Asia Power Company PJSC (UAE)	Ass. Power generation project company in the UAE
	Shuweihat CMS International Power Company PJSC (UAE)	Ass. Power generation and sea water desalination project company in the UAE
<b>Europe</b>	Sumisho Global Logistics Europe GmbH (Germany)	Sub. Warehousing and distribution services in Europe
	CBK Netherlands Holdings B.V. (Netherlands)	Ass. Holding company of CBK Power Company Ltd., which operates a hydraulic power plant in the Philippines
	Energia Verde De La Macaronesia, S.L. (EVM) (Spain)	Ass. Development and management of solar power generation plant in Spain
	EVM2 Energias Renovables S.L. (EVM2) (Spain)	Ass. Development and management of solar power generation plant in Spain
	Bluewell Reinsurance Company (Bermuda) Ltd. (U.K.)	Sub. Captive insurance company (Rent A Captive)
	Summit Renewable Energy Europe Ltd. (U.K.)	Sub. Development and management of offshore wind power generation plants in Europe
	Summit Water Limited (U.K.)	Sub. Investment vehicle for Sutton & East Surrey Water plc. water supply and distribution company in England, and other related subsidiaries
<b>The Americas</b>	Mesquite Creek Wind, LLC (U.S.)	Sub. Development and management of wind power generation plant in the U.S.
	Perennial Power Holdings Inc. (U.S.)	Sub. Development, ownership, and management of power plant in the U.S.
	Sumisho Global Logistics (USA) Corporation (U.S.)	Sub. International intermodal transport in the U.S.
	Summit Solar Americas, Inc. (U.S.)	Sub. Development and management of solar power generation plant in the U.S.
	Summit Wind Energy, Inc. (U.S.)	Sub. Development and management of wind power generation plant in the U.S.
	Summit Wind Power Texas, Inc. (U.S.)	Sub. Development and management of wind power generation plant in the U.S.
<b>Oceania</b>	Summit Southern Cross Power Holdings Pty Ltd (Australia)	Sub. Development, ownership, and management of power plant in Australia
	Bluewell Reinsurance (Micronesia) Ltd. (Micronesia)	Sub. Captive insurance company

	Subsidiary/Associated Company	Main Business	
<b>Media, Network, Lifestyle Related Goods &amp; Services Business Unit</b>			
<b>Japan</b>	Akachan House 1.2.3 Co., Ltd.	Sub. Online retailer of baby related items	
	Chiba Flour Milling Co., Ltd.	Ass. Flour milling	
	Chiba Kyodo Silo Co., Ltd.	Sub. Operation of silo facility and handling of grain, such as wheat, barley, and corn	
	IG Kogyo Co., Ltd.	Sub. Manufacture and sale of insulated metal panels for roofing and walls	
	Jupiter Shop Channel Co., Ltd.	Ass. Operation of TV shopping channel	
	Jupiter Telecommunications Co., Ltd. (J:COM)	Ass. Operation of multiple cable TV systems (MSO) and channels (MCO)	
	KI Fresh Access, INC.	Ass. Fresh product wholesale	
	Mammy Mart Corporation	Ass. Supermarket chain	
	MARC JACOBS JAPAN K.K.	Ass. Import and sale of bags, apparel, and accessories, "MARC JACOBS" and "MARC BY MARC JACOBS"	
	Nissin Sugar Co., Ltd.	Ass. Sugar refining	
	REIBI CO., LTD.	Sub. Facility management of buildings in Kansai region	
	S.C. BUILDING SERVICE CO., LTD.	Sub. Facility management of buildings in Kanto region	
	S.C. Cement Co., Ltd.	Sub. Sale of cement, ready-mixed concrete, and concrete products	
	S.C. Cement (Kyushu) Co., Ltd.	Sub. Sale of ready-mixed concrete, concrete products, cement, and aggregate	
	SC Foods Co., Ltd.	Sub. Import, development, and sale of foodstuffs	
	SCSK Corporation	Sub. System integration, IT infrastructure implementation, and IT management	
	SEVEN INDUSTRIES CO., LTD.	Ass. Manufacture and sale of laminated lumber and wood products	
	Soukai Drug Co., Ltd.	Sub. Internet drugstore	
	SRJ Co., Ltd.	Ass. Development and Distribution of Learning Enhancement, English Education and Career Training tools and services	
	Sumifru Corporation	Sub. Import and sale of fruits and vegetables	
	Sumisho Airbag Systems Co., Ltd.	Sub. Manufacture and sale of cushions for side curtain airbags	
	Sumisho & Mitsuibussan Kenzai Co., Ltd.	Ass. Sale of building materials	
	Sumisho Brand Management Corporation	Sub. Import, design, and sale of the German luxury line of Chenille fabrics brand "FEILER" and women's apparel and accessories brand "NARA CAMICIE"	
	SUMISHO BUILDING MANAGEMENT CO., LTD.	Sub. Property management of office buildings	
	Sumisho Interior International Inc.	Sub. Interior designing and installation, import and sale of furniture	
	Sumisho Montblanc Co., Ltd.	Sub. Processing and sale of work uniforms and related clothing products	
	Sumisho Realty Management Co., Ltd.	Sub. Asset management business of real estate	
	SUMISHO TATEMONO CO., LTD.	Sub. Sale and management of residential properties and housing remodeling	
	Sumisho Urban Kaihatsu Co., Ltd.	Sub. Planning, development, management, and operation of shopping centers	
	Sumitex International Co., Ltd.	Sub. Production and sale of textile products and materials	
	Summit, Inc.	Sub. Supermarket chain	
	Summit Oil Mill Co., Ltd.	Sub. Refining and sale of vegetable oil	
	T-Gaia Corporation	Ass. Sale of cellular phones and fixed-line telecommunication services	
	TOMOD'S INC.	Sub. Drugstore chain	
	<b>Asia</b>	Sumitomo Corporation Equity Asia Limited (Hong Kong)	Sub. Strategic venture investment in Asia
		PT. Summit Biomass Indonesia (Indonesia)	Sub. Manufacture and sale of carbonized Palm Kernel Shell (PKS)
		MobiCom Corporation LLC (Mongolia)	Ass. Integrated telecommunication service in Mongolia
		KDDI SUMMIT GLOBAL SINGAPORE (Singapore)	Ass. Provision of telecommunications business in Myanmar through Myanmar Subsidiary
		SANYOU DRUGSTORES, LTD. (Taiwan)	Ass. Drugstore chain in Taiwan
		3S Holding CO., LTD (Thailand)	Ass. Investing in sugar sales & manufacturing business in Thailand
		SHOP Global (Thailand) Co., Ltd. (Thailand)	Ass. Development of multi-media retail business in Thailand
	CJ-SC Global Milling (Vietnam)	Ass. Production, distribution, sales, and exports of wheat flour and flour pre-mix	
	<b>Europe</b>	OA0 Terneyles (Russia)	Ass. General forest products company
	<b>The Americas</b>	Volterra S.A. (Chile)	Ass. Afforestation, manufacture, and sale of woodchip for paper
		Presidio Ventures, Inc. (U.S.)	Sub. Strategic venture investment in the U.S.
	<b>Oceania</b>	Emerald Grain Pty Ltd (Australia)	Sub. Grain accumulation, trading, and marketing and grain storage and port operation
		Suprema Holdings Pty Ltd (Australia)	Ass. Manufacturing and sale of frozen dough
Juice Products New Zealand Ltd (New Zealand)		Sub. Manufacturing of squeezed juice from vegetables & fruit, mainly from carrots	
Summit Forests New Zealand Ltd. (New Zealand)		Sub. Forest management in New Zealand	

	Subsidiary/Associated Company	Main Business
<b>Mineral Resources, Energy, Chemical &amp; Electronics Business Unit</b>		
<b>Japan</b>	Enessance Holdings Co., Ltd.	Ass. Planning strategy of LPG & home solution business, controlling its subsidiaries, and LPG wholesale
	Gyxis Corporation	Ass. Manufacture, storage, transport, sale and import/export of LP gas
	LNG Japan Corporation	Ass. Trading of LNG and investment and financing related to LNG business
	Nippon Power Graphite Co., Ltd.	Ass. Manufacture and sale of lithium-ion battery anode material
	Nusa Tenggara Mining Corporation	Sub. Investment in and financing of the Batu Hijau copper/gold mine project in Indonesia
	Osakagas Summit Resources Co., Ltd.	Ass. Investment in oil and natural gas development business
	Petrocoke Japan Ltd.	Sub. Manufacture and sale of petroleum needle coke
	Petro Summit E & P Corporation	Sub. Exploration, development, production, and sale of and investment in oil and natural gas, etc.; investment in and financing business of the same kind
	Soda Ash Japan Co., Ltd.	Sub. Sale of soda ash from the United States
	Sumisho Materials Corporation	Sub. Trading of precious metals and other products
	Sumitomo Shoji Chemicals Co., Ltd.	Sub. Sale and trade of chemicals and plastics
	Sumitronics Corporation	Sub. Electronics manufacturing service
	Summit Agri-Business Corporation	Sub. Manufacture and sale of fertilizer and agriculture-related materials
	Summit Agro International, Ltd.	Sub. Development and distribution of crop protection products, household insecticides, and pet care products
	Summit CRM, Ltd.	Sub. Trading of carbon-related materials (coke, etc.), refractories, and ferrous raw materials
	Summit Pharmaceuticals International Corporation	Sub. Drug discovery services, pharmaceutical development, and supply of active pharmaceutical ingredients, intermediates, and formulations
<b>Asia</b>	Cepsa Quimica China S.A. (China)	Ass. Manufacture petrochemicals (phenol) in China
	Summit Agro China Co., Ltd. (China)	Sub. Distribution of crop protection products in China
	Summit Fertilizer (Foshan) Co., Ltd. (China)	Ass. Manufacture and sale of chemical fertilizer in China
	Summit Fertilizer (Qingdao) Co., Ltd. (China)	Ass. Manufacture and sale of chemical fertilizer in China
	Sakura Ferroalloys Sdn. Bhd (Malaysia)	Ass. Production and marketing of manganese alloy
	Union Harvest (M) Sdn. Bhd. (Malaysia)	Sub. Import, manufacture, and sale of fertilizer in Malaysia
	Petro Summit Pte. Ltd. (Singapore)	Sub. International trade of crude oil and petroleum products
	Sumitronics Taiwan Co., Ltd. (Taiwan)	Sub. Sale of electronics materials and parts
<b>Europe</b>	Sumi Agro Turkey Tarim Ilaclari Sanayi Ve Ticaret A.S. (Turkey)	Sub. Distribution of crop protection products in Turkey
	C&O Pharmaceutical Technology (Holdings) Limited (Bermuda Islands)	Ass. R&D, manufacture, import, and sale of pharmaceutical products
	Appak LLP (Kazakhstan)	Ass. Development of uranium mine in Kazakhstan and production and sale of uranium ore concentrates
	SMM Cerro Verde Netherlands B.V. (Netherlands)	Ass. Investment in the Cerro Verde copper mine in Peru
	Alcedo S.R.L. (Romania)	Sub. Integrated sale of agricultural materials in Romania
	LLC Russian Quartz (Russia)	Ass. Manufacture and sale of high-purity quartz
	Interacid Trading S.A. (Switzerland)	Sub. International trade of sulfur and sulfuric acid
	Summit Minerals GmbH (Switzerland)	Sub. Sale of silver, zinc, and lead concentrates produced in the San Cristobal project in Bolivia
	Sumi Agro Europe Limited (U.K.)	Sub. Investment in crop protection business in Europe
	Sumitomo Corporation Global Commodities Limited (U.K.)	Sub. Trading of Market Commodities
	Summit Exploration & Production Limited (U.K.)	Sub. Exploration, development, production, and sale of and investment in oil and natural gas in the U.K. North Sea
	Summit Pharmaceuticals Europe Ltd. (U.K.)	Sub. Supply of active pharmaceutical ingredients, intermediates, and distribution of cosmetic raw materials
<b>The Americas</b>	Summit-Agro Argentina S.A. (Argentina)	Sub. Distribution of crop protection products in Argentina
	Minera San Cristobal S.A. (Bolivia)	Sub. Mining of San Cristobal silver, zinc, and lead project in Bolivia
	Agro Amazonia Productos Agropecuarios S.A. (Brazil)	Sub. Integrated supply of agricultural materials in Brazil
	Cosmotec Internacional Especialidades Cosmeticas Ltda. (Brazil)	Sub. Distribution of cosmetic raw materials and development of formulation recipe for the cosmetic and personal care markets
	Mineração Usiminas S.A. (Brazil)	Ass. Exploitation, production, and export of iron ore and development of related infrastructure
	SMM Sierra Gorda Inversiones Limitada (Chile)	Ass. Investment in the Sierra Gorda copper and molybdenum mine in Chile
	Summit Agro South America SpA (Chile)	Sub. Investment in crop protection business in South America
	Summit Agro Mexico S.A. de C.V. (Mexico)	Sub. Distribution of crop protection products in Mexico
	Pacific Summit Energy LLC (U.S.)	Sub. Natural gas and power trade
	Presperse Corporation (U.S.)	Sub. Distribution of cosmetic raw materials and development of formulation recipe for the cosmetic and personal care markets
	SC Minerals America, Inc. (U.S.)	Sub. Investment in the Morenci copper mine and the Pogo gold mine in the U.S. and the Candelaria and Ojos del Salado copper mines in Chile
	Summit Agro USA, LLC (U.S.)	Sub. Distribution of crop protection products in the U.S.
	Summit Discovery Resources, II, III, LLC. (U.S.)	Sub. Exploration, development, production, sale of and investment in natural gas in North America
	Summit Mining International Inc. (U.S.)	Sub. Management support of the San Cristobal Project in Bolivia and development and consulting service for new mining investment
	The Hartz Mountain Corporation (U.S.)	Ass. Manufacturing, distribution, and sales of pet care products
<b>Oceania</b>	SC Mineral Resources Pty. Ltd. (Australia)	Sub. Investment in the Northparkes copper mine in Australia
	Sumisho Coal Australia Pty. Ltd. (Australia)	Sub. Investment in coal mines in Australia
	Summit Rural Western Australia Pty. Ltd. (Australia)	Sub. Import, manufacture, and sale of fertilizer in Western Australia
<b>Africa</b>	Ambatovy Minerals S.A. (Madagascar)	Ass. Mining of the Ambatovy nickel project in Madagascar
	Dynatec Madagascar S.A. (Madagascar)	Ass. Processing and refining for the Ambatovy nickel project in Madagascar
	Oresteel Investments (Proprietary) Limited (South Africa)	Ass. Investment in the Assmang iron ore and manganese mine in South Africa

	Subsidiary/Associated Company	Main Business	
<b>Overseas</b>			
<b>Asia</b>	Huayou Tubular Co., Ltd. (China)	Ass. Stock and sale of speciality tubular products for boilers	
	Shanghai Hi-Tec Metal Products Co., Ltd. (China)	Sub. Manufacture and sale of metal-processing products	
	Shanghai Summit Metal Products Co., Ltd. (China)	Sub. Shearing, slitting, and sale of steel sheets	
	OMS Holdings Pte. Ltd. (Singapore)	Sub. Manufacturing, shearing, slitting, and sale of tubular products for the oil and gas industry	
	Summit Sunrise Energy Co., Ltd. (Thailand)	Sub. Ownership of power plant in Asia	
<b>Middle East</b>	Mezon Stainless Steel FZCO (JAE)	Sub. Sale of stainless steel tubular, pipes, and plates	
<b>Europe</b>	Sumisho Global Logistics Europe GmbH (Germany)	Sub. Forwarding and logistics business	
	Summit D&V Kft. (Hungary)	Sub. OEM supply, sub-assembly, and sequence delivery of automotive components	
	Summit Auto Poland Sp. z.o.o. (Poland)	Sub. Dealership of Honda motor vehicles	
	Summit Motors Poland Sp. z.o.o. (Poland)	Sub. Dealership of Ford motor vehicles	
	Summit Motors Slovakia s.r.o (Slovakia)	Sub. Import and sale of Ford motor vehicles and parts	
	Summit Leasing Slovenija d.o.o. (Slovenia)	Sub. Financing of motor vehicles	
	Summit Motors Ljubljana d.o.o. (Slovenia)	Sub. Import and sale of Ford motor vehicles and parts	
	Tecnosumit (Tecnologia para La Construccion y Minería S.L.) (Spain)	Sub. Holding and management company of Komatsu distributors and other business in Europe	
	SC Motors Sweden AB (Sweden)	Sub. Management company of automotive distributorship and wholesale of parts and accessories	
	ERYNGIUM Ltd. (U.K.)	Sub. Manufacturing, processing, and distribution of speciality metals for OCTG market	
	Sumitomo Corporation Capital Europe Plc (U.K.)	Sub. Financial services to Group companies	
	<b>The Americas</b>	Summit Tubulars Corporation (Canada)	Sub. Sales of tubular products for the oil and gas industry
		Atlantic Hills Corporation (U.S.)	Sub. Investment in house developments
Diversified CPC International, Inc. (U.S.)		Sub. Mixing, refining, and sale of aerosol gases	
Edgen Group Inc. (U.S.)		Sub. Sales of specialized products for energy and infrastructure industry and tubular products for oil and gas industry	
Global Stainless Supply, Inc. (U.S.)		Sub. Wholesale of stainless steel tubes	
Linder Industrial Machinery Company (U.S.)		Sub. Sales and rental of construction equipment	
Maruichi Leavitt Pipe & Tube, LLC (U.S.)		Ass. Manufacturing of structural tubing	
Oxford Finance LLC (U.S.)		Ass. Specialty finance dedicated to the life science and healthcare industry	
Perennial Power Holdings Inc. (U.S.)		Sub. Development, ownership, and management of power plant in the U.S.	
Pipeco Services, Inc. (U.S.)		Sub. Sales of tubular products for the oil and gas industry	
Premier Pipe LLC (U.S.)		Sub. Sales of tubular products for the oil and gas industry	
Pyramid Tubular Products, L.P. (U.S.)		Ass. Sales of tubular products for the oil and gas industry	
SCOA Residential, LLC (U.S.)		Sub. Investment in house/apartment developments	
SMS International Corporation (U.S.)		Sub. Holding and management company of Komatsu distributor and other business	
Stanton Wind Energy, LLC (U.S.)		Ass. Investment in wind power plant projects	
Steel Summit Holdings, Inc. (U.S.)		Sub. Shearing, slitting, and sale of steel sheets	
Steel Summit International, Inc. (U.S.)		Sub. Sales of steel products	
Sumisho Global Logistics (USA) Corporation (U.S.)		Sub. International intermodal transport	
Summit Solar Americas, Inc. (U.S.)		Sub. Development and management of solar power generation plant	
Summit Wind Energy Inc. (U.S.)		Sub. Investment in wind power plant projects	
Sunstate Equipment Co., LLC (U.S.)		Sub. Rental of construction equipment	
TBC Corporation (U.S.)		Sub. Retail and wholesale of tires	
The Hartz Mountain Corporation (U.S.)		Ass. Manufacturing, distribution, and sales of pet care products	
TKOS I, LLC (U.S.)		Sub. Office building leasing	
TKOS II, LLC (U.S.)		Sub. Office building leasing	
Tubular Solutions Alaska, LLC (U.S.)		Sub. Sales of tubular products for the oil and gas industry	
Unique Machine, LLC (U.S.)		Sub. Threading and processing of tubular products for the oil and gas industry	
VAM USA, LLC (U.S.)		Ass. Threading and processing of tubular products for the oil and gas industry	
V&M Star LP (U.S.)		Ass. Seamless tubular products mill	
Agro Amazonia Produtos Agropecuarios S.A. (Brazil)		Sub. Agricultural input distributor	
<b>Others</b>			
<b>Japan</b>		Sumisho Administration Services Co., Ltd.	Sub. Personnel and general affairs services
	Sumitomo Shoji Financial Management Co., Ltd.	Sub. Financial services such as cash management, trade settlement, and accounting services to Sumitomo Corporation and its subsidiaries	
	Sumitomo Corporation Global Research Co. Ltd.	Sub. Research and consulting arm of Sumitomo Corporation Group	

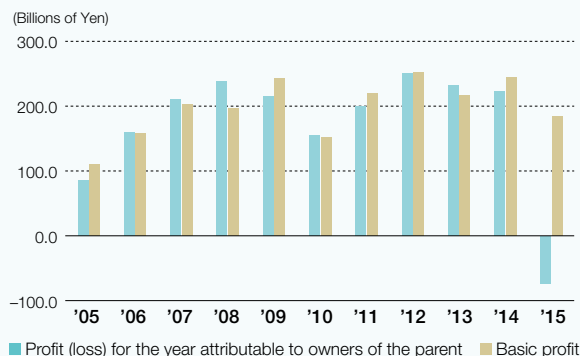
## Financial Highlights

For the years ended March 31

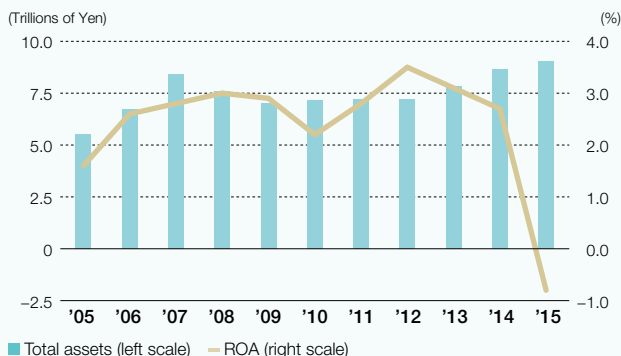
We have prepared consolidated financial statements in accordance with U.S. GAAP for 2010 or earlier and International Financial Reporting Standards ("IFRSs") for 2011 or later.

Financial Data	AA Plan	AG Plan		GG Plan
	2005	2006	2007	2008
<b>Results of operations:</b>				
Gross profit	¥ 563.1	¥ 706.6	¥ 857.7	¥ 934.5
Financial income (expense)	(2.3)	(9.5)	(23.0)	(27.6)
Interest expense, net	(8.6)	(20.0)	(37.1)	(42.8)
Dividends	6.4	10.4	14.1	15.3
Share of profit of investments accounted for using the equity method*	37.4	51.4	70.3	56.9
Profit (loss) for the year attributable to owners of the parent*	85.1	160.2	211.0	238.9
<b>Financial position at year end:</b>				
Total assets	5,533.1	6,711.9	8,430.5	7,571.4
Equity attributable to owners of the parent*	934.9	1,304.0	1,473.1	1,492.7
Interest-bearing liabilities (net)* <sup>1</sup>	2,376.0	2,622.2	2,913.3	3,247.6
<b>Cash flows:</b>				
Net cash from operating activities	(19.4)	(60.8)	194.3	323.7
Net cash used in investing activities	(52.7)	(137.9)	(449.7)	(298.0)
Free cash flows	(72.0)	(198.7)	(255.5)	25.6
Net cash from (used in) financing activities	111.2	256.7	169.7	7.9
<b>Amounts per share:</b>				
Profit (loss) for the year attributable to owners of the parent*:				
Basic	¥ 72.83	¥ 130.18	¥ 169.93	¥ 192.51
Diluted	72.82	130.17	169.90	192.47
Equity attributable to owners of the parent*	776.61	1,047.88	1,192.35	1,194.20
Cash dividends declared for the year* <sup>2</sup>	11.00	25.00	33.00	38.00
<b>Ratios:</b>				
Equity attributable to owners of the parent ratio (%)*	16.9	19.4	17.5	19.7
ROE (%)	10.2	14.3	15.2	16.1
ROA (%)	1.6	2.6	2.8	3.0
Debt-Equity Ratio (net) (times)	2.5	2.0	2.0	2.2
<b>For reference:</b>				
Total trading transactions* <sup>3</sup>	¥9,898.6	¥10,336.3	¥10,528.3	¥11,484.6
Basic profit* <sup>4</sup>	110.0	158.3	202.9	197.1

### Profit (loss) and basic profit



### Total assets and ROA



\* Under U.S. GAAP, "Share of profit of investments accounted for using the equity method" corresponds to "Equity in earnings of associated companies, net," "Profit (loss) for the year attributable to owners of the parent" corresponds to "Net income (loss) attributable to Sumitomo Corporation," "Equity attributable to owners of the parent" corresponds to "Sumitomo Corporation shareholders' equity" and "Equity attributable to owners of the parent ratio" corresponds to "Sumitomo Corporation shareholders' equity ratio."

\*1 Interest-bearing liabilities (net) excludes cash and cash equivalents and time deposits from interest-bearing liabilities.

\*2 Cash dividends per share represents the cash dividends declared applicable to each respective year, including dividends paid after the year-end.

\*3 Total trading transactions represents the gross transaction volume of trading activities, or the nominal aggregate value of the transactions for which the Companies act as a principal or as an agent. Total trading transactions is a measure commonly used by Japanese trading companies and is presented in a manner customarily used in Japan solely for Japanese investors' purposes. It is not to be construed as equivalent to, or a substitute for, sales or revenues under accounting principles generally accepted in the United States of America ("U.S. GAAP") or IFRSs.

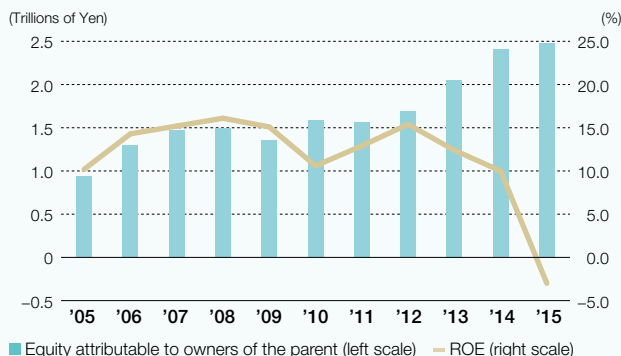
\*4 Basic Profit = (Gross profit + Selling, general and administrative expenses (excluding provision for doubtful receivables) + Interest expense, net + Dividends) x (1 - Tax rate) + Share of profit of investments accounted for using the equity method

<Tax rate was 41% for 2005 through 2012, 38% for 2013 and 2014, and 36% for 2015.>

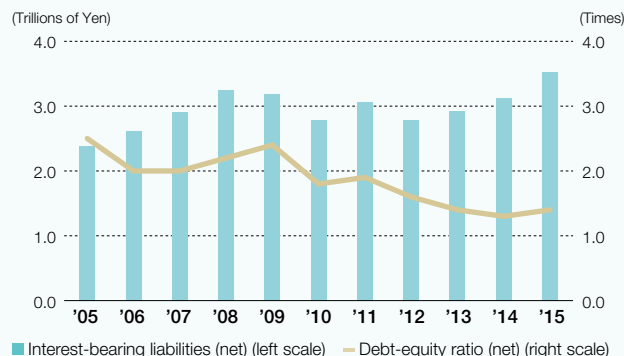
\*5 The U.S. Dollar amounts represent transactions of Japanese yen amounts at the rate of ¥120 = U.S.\$1.

GG Plan	FOCUS' 10		f(x)		BBBO2014		BBBO2014	
	2009	2010	2011	2012	2013	2014	2015	
¥ 935.2	¥ 779.5	¥ 864.0	¥ 918.8	¥ 827.0	¥ 894.4	¥ 952.9	\$ 7,941	
(21.5)	(12.8)	(8.1)	(3.9)	(2.3)	(2.6)	4.3	35	
(36.1)	(24.1)	(18.1)	(15.1)	(15.8)	(17.4)	(13.0)	(109)	
14.6	11.3	10.0	11.2	13.4	14.9	17.2	144	
90.0	76.1	95.6	110.6	107.4	126.2	49.1	409	
215.1	155.2	200.2	250.7	232.5	223.1	(73.2)	(610)	
7,018.2	7,137.8	7,230.5	7,226.8	7,832.8	8,668.7	9,021.4	75,178	
1,353.1	1,583.7	1,570.5	1,689.1	2,052.8	2,404.7	2,481.4	20,679	
3,186.8	2,781.8	3,056.3	2,786.7	2,930.3	3,123.5	3,517.5	29,312	
348.8	510.4	219.5	190.4	280.3	278.2	243.7	2,031	
(261.5)	(59.4)	(469.4)	(35.7)	(186.2)	(249.9)	(399.6)	(3,330)	
87.3	451.0	(249.9)	154.7	94.1	28.4	(155.9)	(1,299)	
(5.8)	(150.1)	155.9	(33.3)	(24.7)	145.9	(74.8)	(623)	
							Yen	U.S. Dollars
¥ 172.06	¥ 124.15	¥ 160.17	¥ 200.52	¥ 185.92	¥ 178.59	¥ (58.64)	\$ (0.49)	
172.03	124.12	160.09	200.39	185.79	178.46	(58.64)	(0.49)	
1,082.47	1,266.93	1,256.31	1,351.10	1,641.60	1,927.37	1,988.62	16.57	
34.00	24.00	36.00	50.00	46.00	47.00	50.00	0.42	
							% , Times	
19.3	22.2	21.7	23.4	26.2	27.7	27.5		
15.1	10.6	12.9	15.4	12.4	10.0	(3.0)		
2.9	2.2	2.8	3.5	3.1	2.7	(0.8)		
2.4	1.8	1.9	1.6	1.4	1.3	1.4		
							Billions of Yen	Millions of U.S. Dollars
¥10,750.0	¥ 7,767.2	¥ 8,349.4	¥ 8,273.0	¥ 7,502.7	¥ 8,146.2	¥ 8,596.7	\$71,639	
243.0	151.4	220.5	251.5	216.5	245.0	184.0	1,533	

### Equity attributable to owners of the parent and ROE



### Interest-bearing liabilities (net) and DER (net)



# Summary of Management's Discussion and Analysis of Financial Condition and Results of Operations

## 1. Economic Environment

During the period under review (fiscal 2014, i.e., April 1, 2014, through March 31, 2015), on the global economic front, although the United States maintained its strong performance, recovery from the downturn was delayed in Europe and the economies of emerging countries generally slowed down, resulting in only moderate growth overall. Geopolitical risks in Ukraine, the Middle East, and North Africa also came to the surface, increasing uncertainties about the outlook for the

global economy. International commodity markets faced increased downward pressure due to mounting doubts over future demand and concerns about oversupply. In the Japanese economy, although there was weakness in personal spending and housing investment after the consumption tax rate was raised in April 2014, the employment and income environment and corporate performance continued to improve, resulting in a gradual recovery trend in the second half.

## 2. Overall Business Performance and Financial Condition

### (1) Business Performance

Consolidated net income (loss) for fiscal 2014 amounted to a loss of ¥73.2 billion, a decrease of ¥296.2 billion from the previous fiscal year. Basic profit of our non-mineral resources businesses, such as the tubular products business, leasing business, overseas power infrastructure business, and media-related business, continued in an upward trend, driven by the earnings pillars which showed robust performance, but also driven by profit contributions from investments made in recent years. However, in addition to the sluggish performance in our mineral resources businesses due to a drop in commodity prices, we posted impairment losses of ¥310.3 billion in total in the several projects, such as Tight oil development project in the U.S. and Iron ore mining project in Brazil; as a result we reported a net loss.

• **Gross Profit.** Gross profit totaled ¥952.9 billion, up by ¥58.5 billion, from ¥894.4 billion in the previous year. This was due to factors such as a robust performance by tubular products business in North America and the new consolidation of Edgen Group.

• **Selling, General and Administrative Expenses.** Selling, general and administrative expenses totaled ¥755.2 billion, an increase of ¥48.8 billion, from ¥706.4 billion in the previous year. This was owing mainly to the yen's depreciation, and to the new consolidation of Edgen Group.

• **Impairment losses on long-lived assets.** Impairment losses on long-lived assets totaled ¥278.6 billion, up by ¥247.2 billion, from ¥31.4 billion in the previous year. This was owing mainly to impairment losses on Tight oil development project in the U.S., Shale gas project in the U.S., Coal-mining projects in Australia, Tire business in the U.S., and Oil field interests in the North Sea.

• **Share of profit of investments accounted for using the equity method.** Share of profit of investments accounted for using the equity method totaled ¥49.1 billion, a decrease of ¥77.1 billion, from ¥126.2 billion in the previous year. This was owing mainly to impairment losses on Iron ore mining project in Brazil.

### (2) Financial Condition

#### 1) Assets, Liabilities, and Equity

As of March 31, 2015, Total assets stood at ¥9,021.4 billion, representing an increase of ¥352.6 billion from the previous fiscal year-end due to new investments and the yen's depreciation despite a decrease caused by impairment losses in the several projects including Tight oil development project in the U.S. and Iron ore mining project in Brazil. As of March 31, 2015, Equity attributable to owners of the parent totaled to ¥2,481.4 billion, an increase of ¥76.8 billion from the previous fiscal year-end, due primarily to an increase in Exchange differences on translating foreign operations caused by the yen's depreciation despite a decrease in Retained earnings by incurring Loss for the year attributable to owners of the parent. The ratio of Equity attributable to owners of the parent to Total assets was 27.5%. Meanwhile, Interest-bearing liabilities (net) rose by ¥394.1 billion from the previous fiscal year-end, to ¥3,517.5 billion. Consequently, the net debt-equity ratio (Interest-bearing liabilities (net) / Equity attributable to owners of the parent) was 1.4.

#### 2) Cash Flows

Net cash provided by operating activities totaled ¥243.7 billion, as our core businesses performed well in generating cash. Net cash used in investing activities was ¥399.6 billion due mainly to new investments of approx. ¥450.0 billion. As a result, Free cash flow, calculated as Net cash provided by operating activities plus Net cash used in investing activities, totaled ¥155.9 billion outflow. Net cash used in financing activities was ¥74.8 billion. As a result, Cash and cash equivalents as of March 31, 2015 decreased by ¥215.3 billion from March 31, 2014 to ¥895.9 billion.

# Principal Subsidiaries and Associated Companies Contributing to Consolidated Results/Overseas Four Broad Regions

(Billions of yen)

	Shares in equity (End of FY2014) (%)	Main business	FY2013 equity in earnings	FY2014 equity in earnings
<b>Metal Products Business Unit</b>				
ERYNGIUM Ltd.*1	*100.00%	Manufacture, processing, and distribution of speciality metals for OCTG market	4.8	6.2
SC Pipe Services Inc.	100.00%	Investment in pipe manufacturing and sales company in the U.S.	2.8	3.2
Sumisho Metalex Corporation	100.00%	Sale of non-ferrous metal products, materials for home heat solution	1.4	1.2
Aluminium smelting business in Malaysia	*20.00%	Aluminum smelting business in Malaysia	(0.2)	0.9
Edgen Group Inc.	*100.00%	Sale of specialized products for energy and infrastructure industry and tubular products for oil and gas industry	0.2	0.3
<b>Transportation &amp; Construction Systems Business Unit</b>				
Sumitomo Mitsui Finance and Leasing Company, Limited	*40.00%	Finance and lease	17.1	18.3
Sumitomo Mitsui Auto Service Company, Limited	46.00%	Leasing of motor vehicles	4.0	4.4
P.T. Summit Oto Finance	*100.00%	Financing of motorcycles	3.0	2.9
P.T. Oto Multiartha	*100.00%	Financing of automobiles	4.2	2.3
Sumisho Machinery Trade Corporation*2	*100.00%	Trading of machinery, equipment, and automobiles in Japan	1.3	1.8
TBC Corporation*3,4	*100.00%	Retail and wholesale of tires	(3.0)	(24.8)
<b>Environment &amp; Infrastructure Business Unit</b>				
Sumisho Global Logistics Co., Ltd.	100.00%	Global logistics provider	1.4	1.3
Perennial Power Holdings Inc.	*100.00%	Development, ownership, and management of power plants in the U.S.	1.1	1.3
<b>Media, Network &amp; Lifestyle Related Goods &amp; Services Business Unit</b>				
Jupiter Telecommunications Co., Ltd. (J:COM)	50.00%	Operation of multiple cable TV systems (MSO) and channels (MCO)	31.6	26.1
Jupiter Shop Channel Co., Ltd.	50.00%	Operation of TV shopping channel	7.0	7.1
SCSK Corporation	50.77%	System integration, IT infrastructure implementation, and IT management	7.4	3.3
Summit, Inc.	100.00%	Supermarket chain	0.9	2.4
2 companies in the banana business	*-	Import and sale of fruits and vegetables	1.6	1.9
MobiCom Corporation LLC	33.98%	Integrated telecommunication service in Mongolia	1.1	1.0
S.C. Cement Co., Ltd.	*100.00%	Sale of cement, ready-mixed concrete, and concrete products	1.0	0.9
Sumisho Brand Management Corporation	*100.00%	Import, design, and sale of the German luxury line of Chenille fabrics brand "FEILER" and women's apparel and accessories brand "NARA CAMICIE"	0.9	0.0
Grain business companies in Australia*5,6	*100.00%	Grain accumulation and investment in grain storage and export terminal operating business	0.9	(2.3)
<b>Mineral Resources, Energy, Chemical &amp; Electronics Business Unit</b>				
2 silver, zinc, and lead business companies in Bolivia	*100.00%	Investment in silver, zinc, and lead mines operating, and ore concentrate sales companies in Bolivia	5.4	11.8
LNG Japan Corporation	50.00%	Trading of LNG and investment and financing related to LNG business	5.1	9.3
Oresteel Investments (Proprietary) Limited	*49.00%	Investment in the Assmang iron ore and manganese mine in South Africa	15.9	7.9
SC Minerals America, Inc.	*100.00%	Investment in the Morenci copper mine and the Pogo gold mine in the U.S. and the Candelaria and Ojos del Salado copper mines in Chile	5.4	4.3
Sumitronics Corporation	100.00%	Electronics manufacturing service	1.2	1.5
SMM Cerro Verde Netherlands B.V.	20.00%	Investment in the Cerro Verde copper mine in Peru	2.4	1.5
Sumitomo Shoji Chemicals Co., Ltd.	100.00%	Sale and trade of chemicals and plastics	1.5	1.4
2 companies with oil field interests in the North Sea*4	*-	Development, production, and sale of crude oil and natural gas in the British and Norwegian zones of the North Sea	2.4	(0.4)
Nusa Tenggara Mining Corporation	74.28%	Investment in and financing of the Batu Hijau copper/gold mine project in Indonesia	0.4	(4.3)
Nickel mining and refining business in Madagascar	-	Investment in and financing of the Ambatovy nickel mining project in Madagascar	(1.1)	(10.1)
Companies related to coal business in Australia*4	*-	Investment in coal mines in Australia	(26.7)	(28.2)
Shale gas business in the U.S.*4	*100.00%	Exploration, development, production, sale of and investment in natural gas in the U.S.	(0.3)	(30.5)
Iron ore mining business in Brazil*4	*-	Iron ore mining business in Brazil	5.1	(60.3)
Tight oil business in the U.S.*4	*100.00%	Exploration, development, production, and sale of and investment in tight oil and natural gas in North America	(0.1)	(197.9)
<b>Overseas</b>				
Europe, Middle East, Africa & CIS*4	-	Export, import, and wholesale	11.1	12.3
Asia & Oceania*4	-	Export, import, and wholesale	4.9	8.1
East Asia	-	Export, import, and wholesale	4.3	4.2
Americas*4	-	Export, import, and wholesale	21.0	(47.6)

Notes (\*) Shares in equity and equity in earnings for companies marked with an asterisk are the percentage shares and equity amounts company-wide including other segments.

(\*1) We changed our consolidated periods from FY2013, the results show equity in earnings of Jan.-Dec., 2013 for FY2013, Apr., 2014-Mar., 2015 for FY2014 respectively.

(\*2) The majority shareholder was changed from Environment & Infrastructure business unit to Transportation & Construction Systems business unit.

(\*3) This company has been transferred to Transportation & Construction Systems business unit according to business restructuring since April 1, 2015.

(\*4) The impairment losses included in FY2014 Results: Companies related to TBC Corporation -18.8, 2 companies with oil field interests in the North Sea -3.6, Coal business in Australia -24.4, Shale gas project in the U.S.-31.1, Iron ore mining business in Brazil -62.3, Tight oil business in the U.S. -199.2 (billions of yen)

Some portions of the impairment losses are included in FY2014 Results of Europe, Middle East, Africa & CIS, Asia & Oceania and Americas. (Europe, Middle East, Africa & CIS -0.5, Asia & Oceania -3.5,

Americas -71.0 (billions of yen)

(\*5) In February 2014, our shares in Grain business companies in Australia were increased to 100.00%. (FY2013 Apr.-Dec.: 50.00%)

(\*6) We changed our consolidated periods from FY2013, the results show equity in earnings of Mar., 2013 Mar., 2014 for FY2013, Apr., 2014-Mar., 2015 for FY2014 respectively.