

Installing a Star Ethernet Printer with a Static IP Address on Windows 7/Vista/XP Using StarPRNT

Introduction

This application note shows how to install a Star Ethernet Printer with a static IP Address using the StarPRNT Intelligence Driver/Configuration Utility package. While these instructions were written using the TSP700II, this document suffices for the below models.

Supported Printers: FVP10, TSP650, TSP700II, TSP800II, SP700, SP500, TUP500

Supported Interfaces: Ethernet

Supported Environments: Windows 7 (32/64-bit), Windows Vista (32/64-bit), Windows XP

Star Tools Needed: StarPRNT Intelligence Configuration Utility found on the Installation CD

Table of Contents

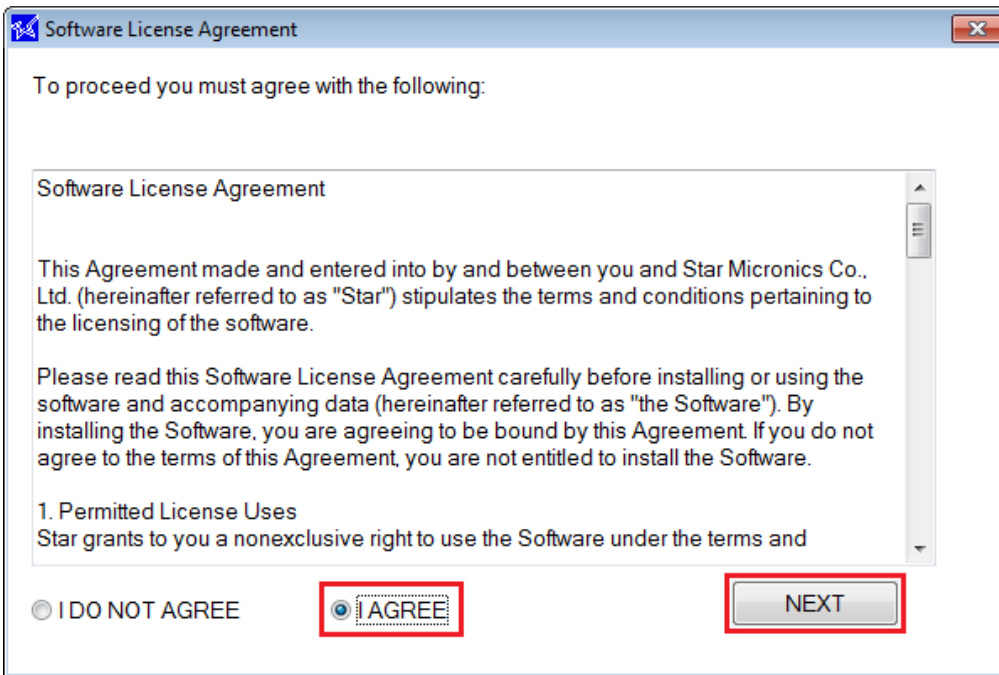
| | |
|-------------------------------------------------------------------------|---------|
| I. StarPRNT Installation | Page 1 |
| II. Ethernet Printer Installation (Static) | Page 6 |
| III. Manually Assigning an IP Address in StarPRNT | Page 16 |
| IV. Brief Overview of StarPRNT | Page 19 |

I. StarPRNT Installation

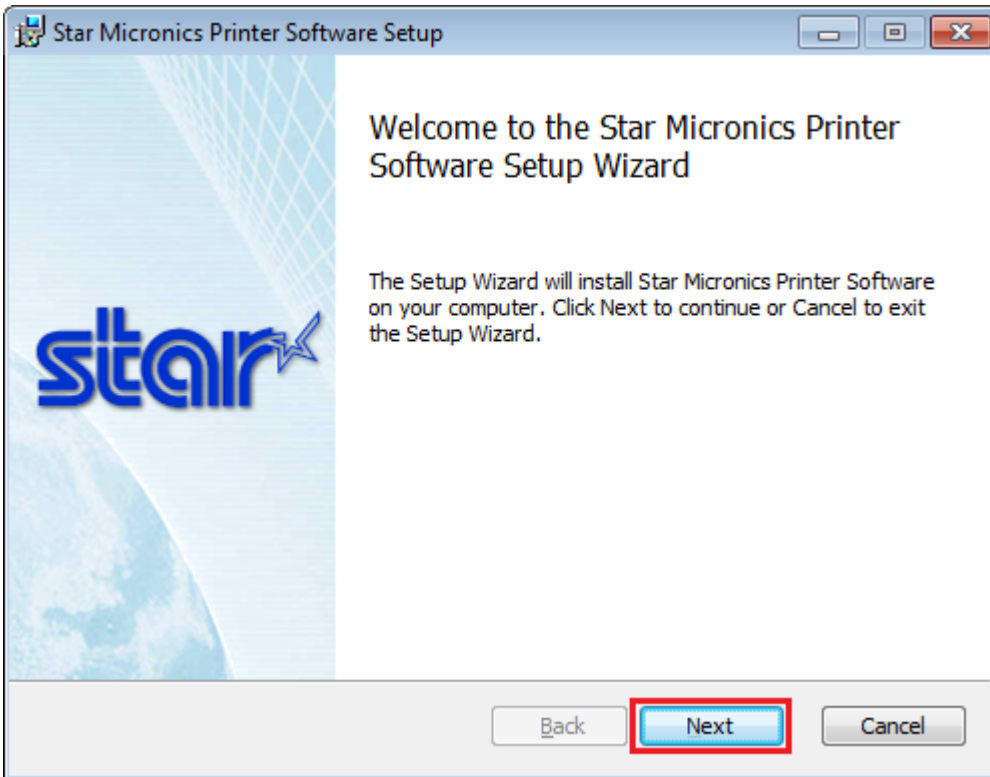
1. Insert the CD into the CDRom drive or click "Autorun.exe" in the main directory to execute the installer. If the CD was misplaced, the contents can be downloaded from the [Star Global Support Site](#) for free.



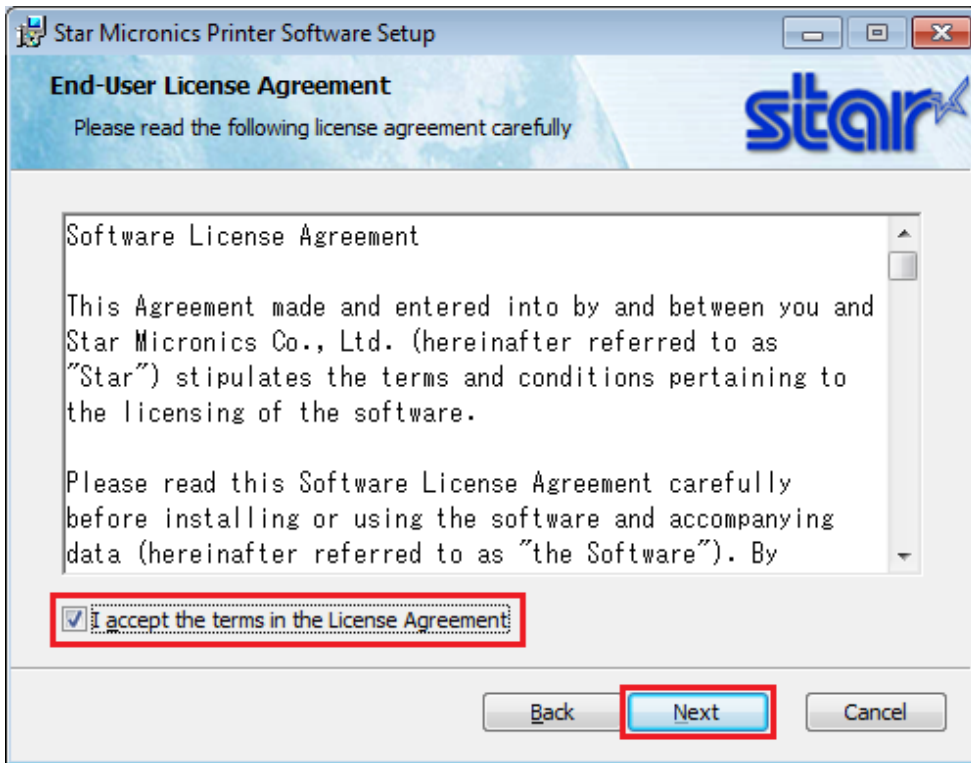
2. Click "Install".



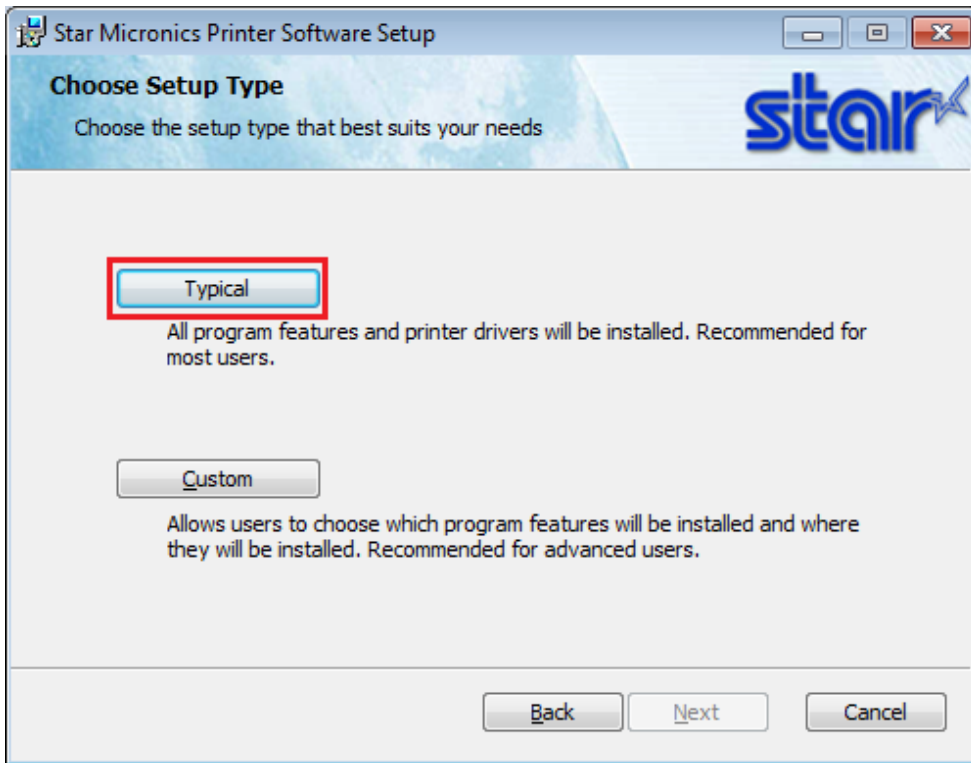
3. Click "I AGREE" and click "NEXT".



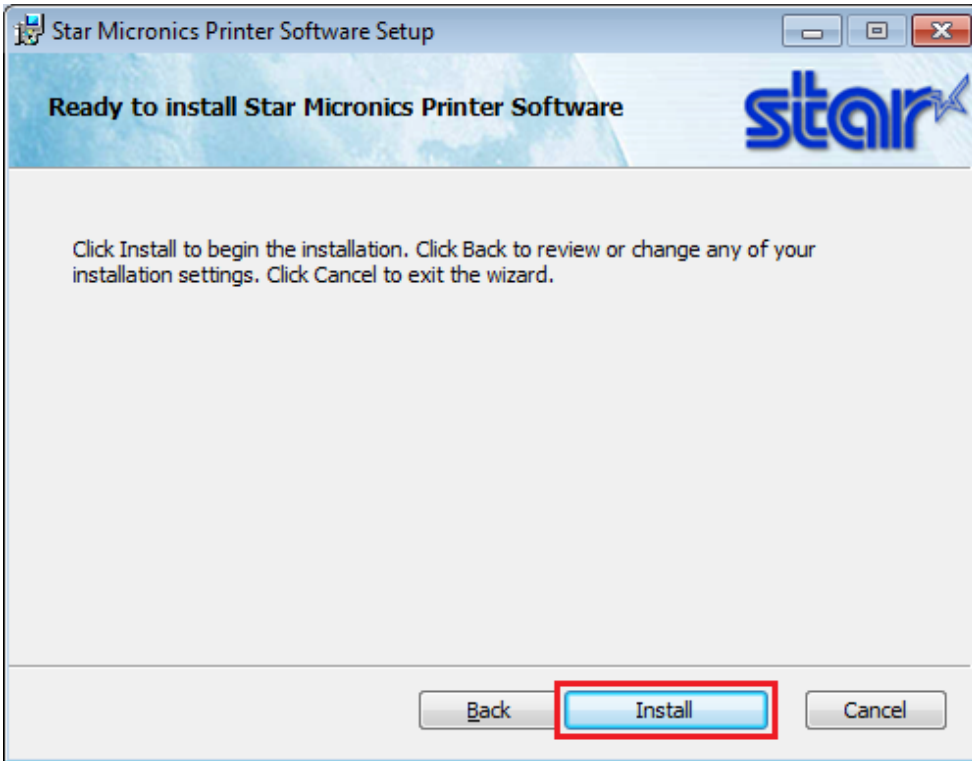
4. Click "Next".



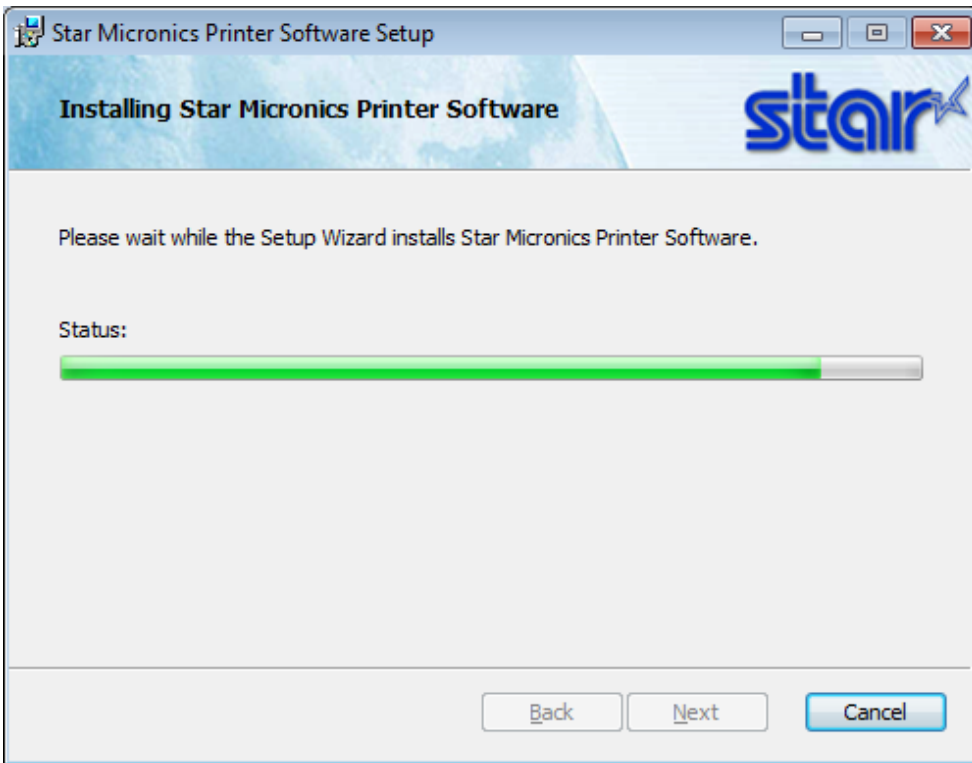
5. Check "I accept the terms in the License Agreement" and click "Next".



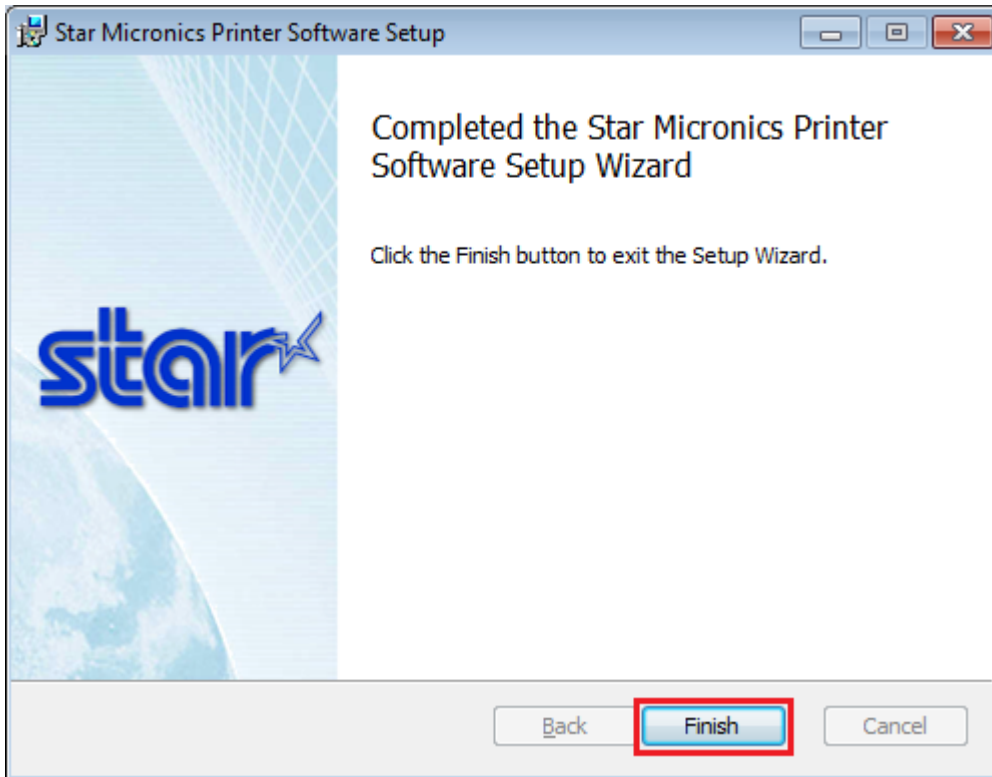
6. Click "Typical".



7. Click "Install".



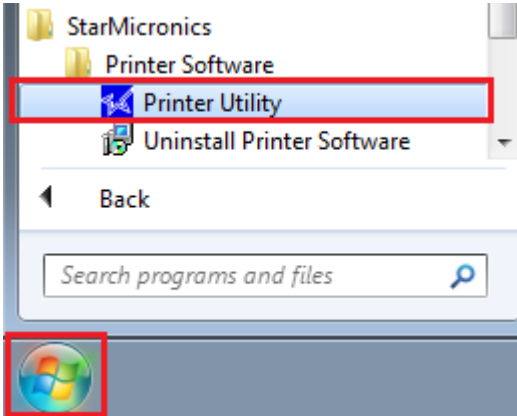
8. The installer completes installation of StarPRNT Intelligence.



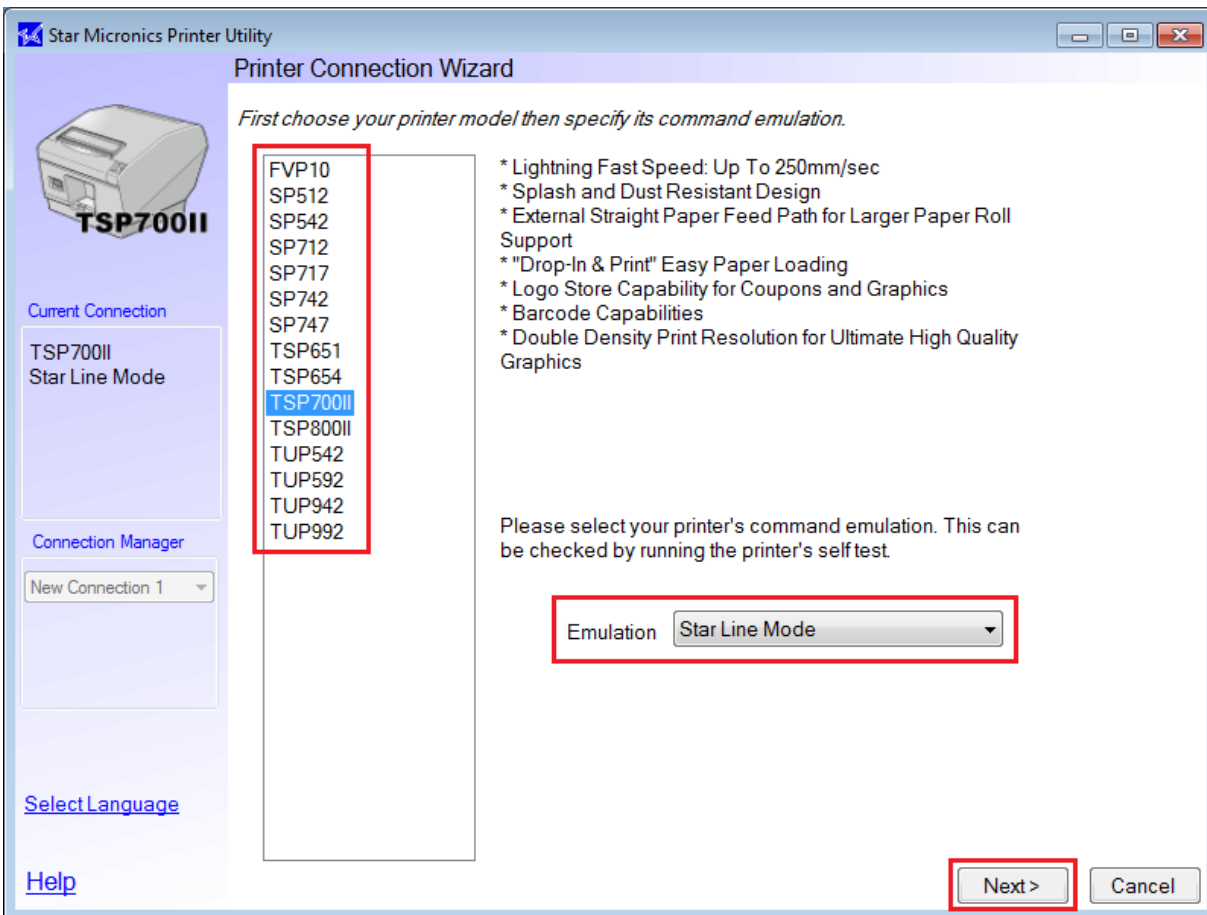
9. Click "Finish".

II. Ethernet Printer Installation (Static IP)

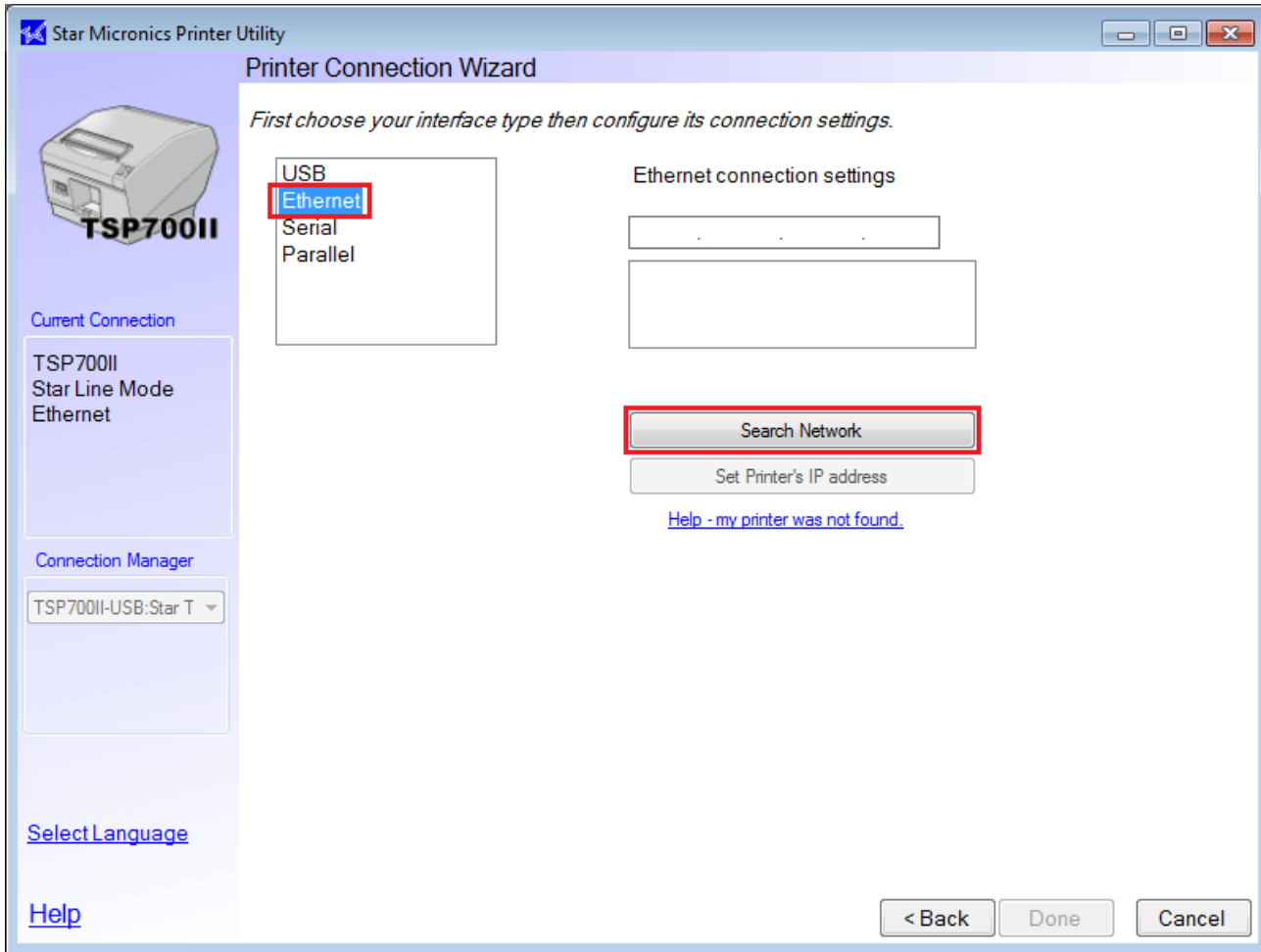
1. At this time, the printer should be powered on and connected to the same network as the PC.



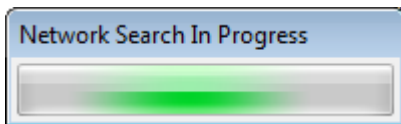
2. Click the Windows Start button and navigate StarMicronics > Printer Software > Printer Utility.



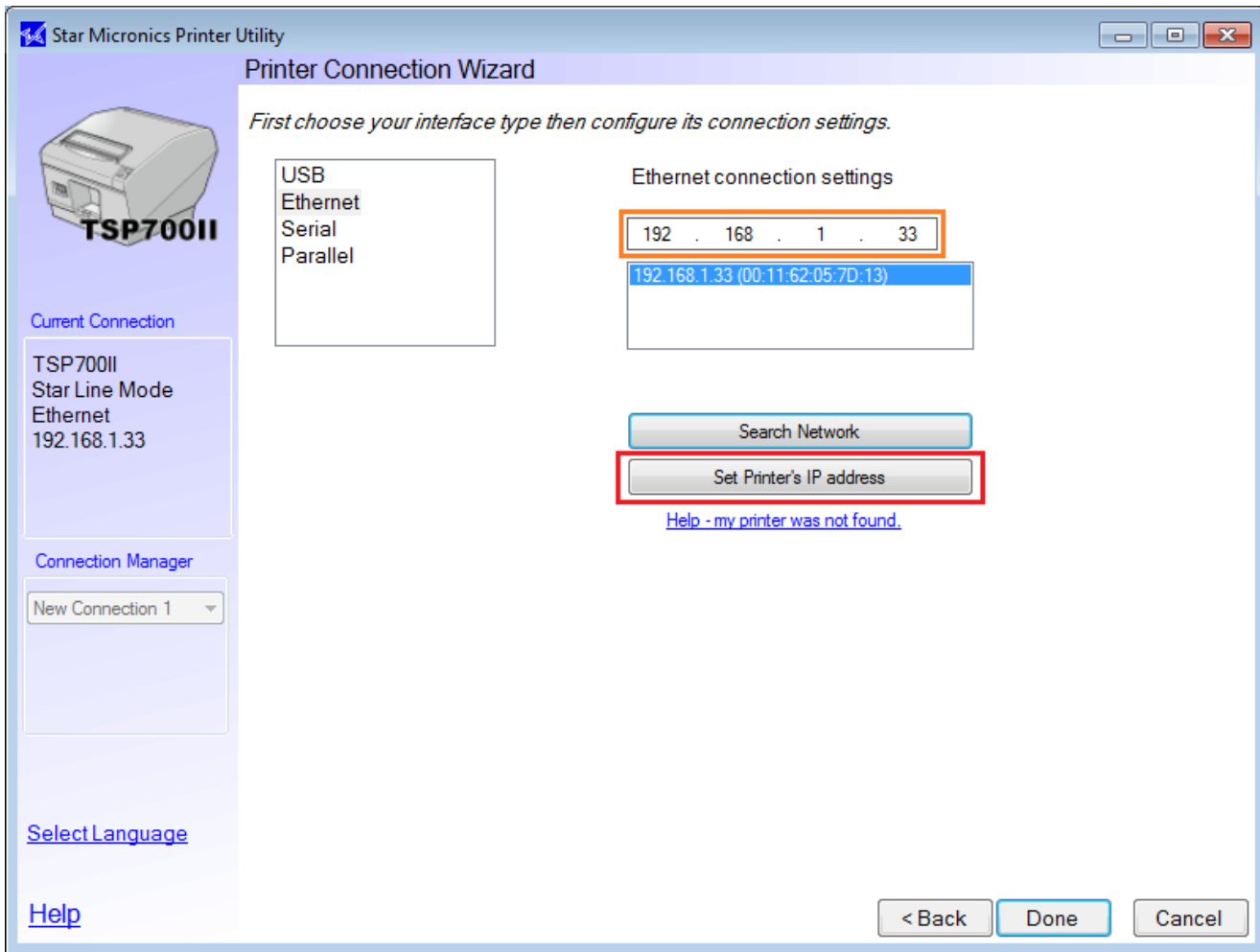
3. Select the printer model in the left menu bar. Set the Emulation to “Star Line Mode”. Click “Next”.



4. Select “Ethernet” in the left menu bar. Then, click “Search Network”.

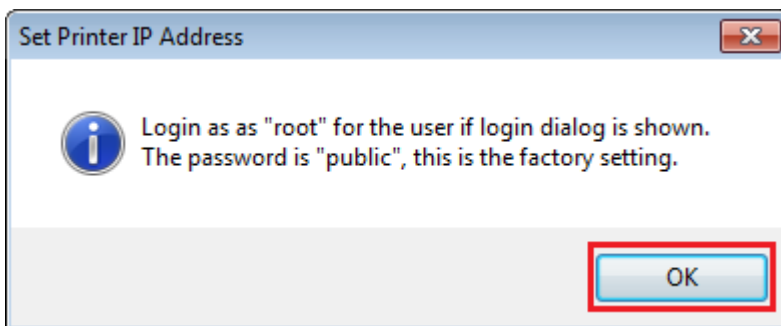


5. StarPRNT searches the network for the printer.

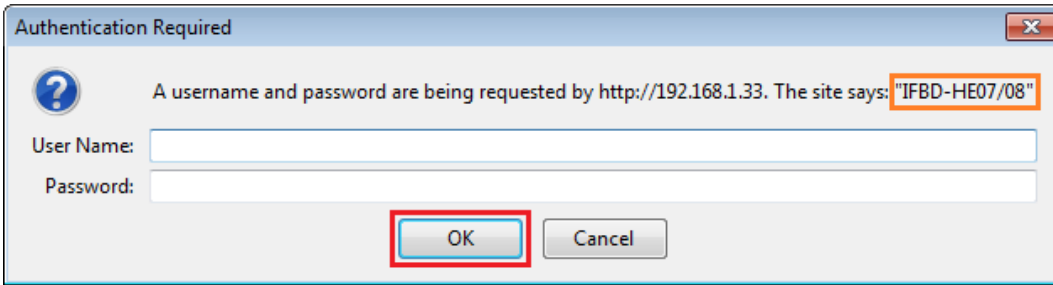


6. The printer's dynamic IP Address appears in the section highlighted by the orange box. Click the button highlighted by the red box reading "Set Printer's IP address".

* If no Star Printer was found on the network, [click here to jump to III Manually Assigning an IP Address in StarPRNT.](#)



7. Click "OK".



8. Log in. The model of the ethernet card in use is displayed where the orange box highlights.

For IFBD-HE07/08 and IFBD-HE05/06 Models

User Name: root

Password: public

For IFBD-HE03/04 Models

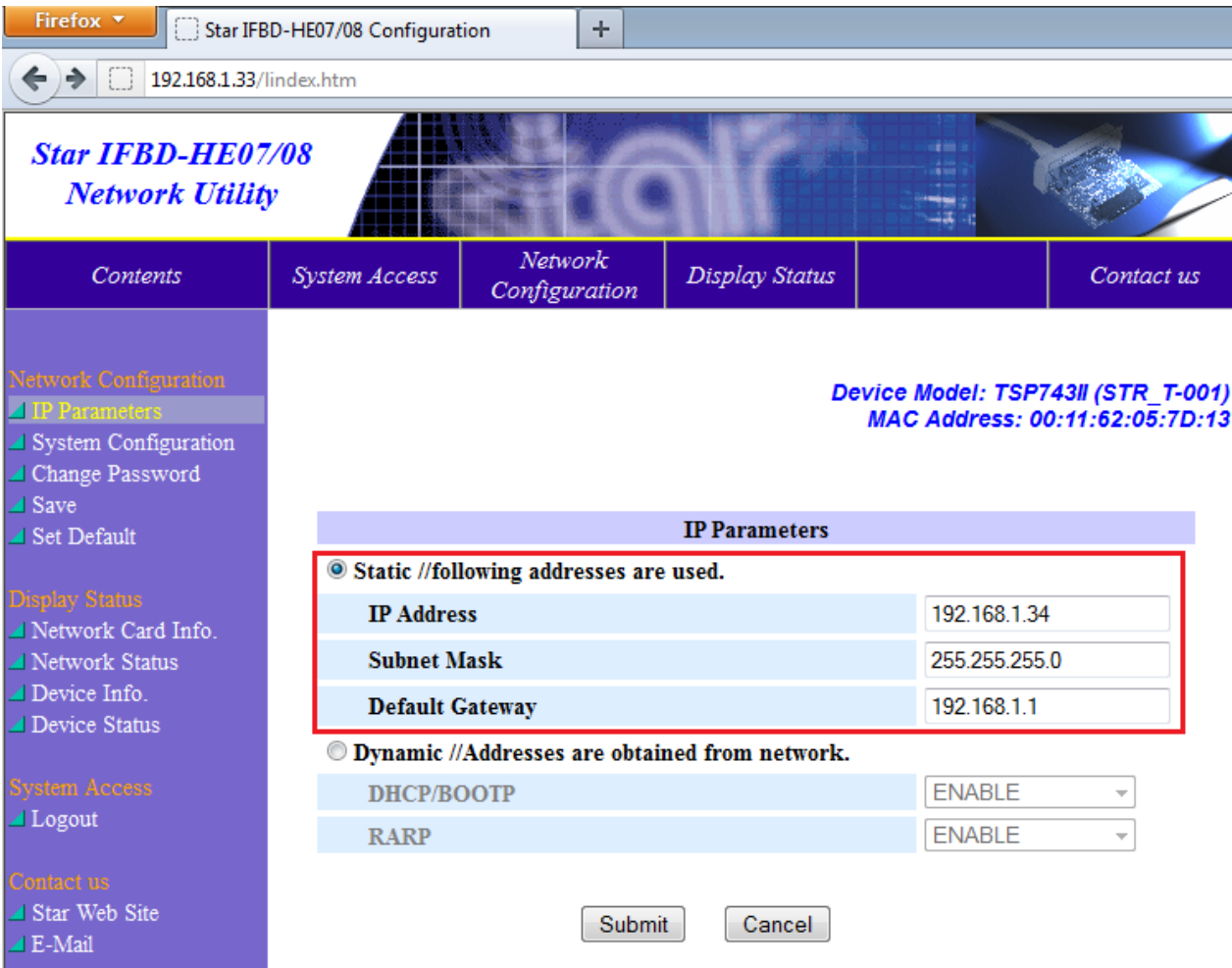
User Name: root

Password:

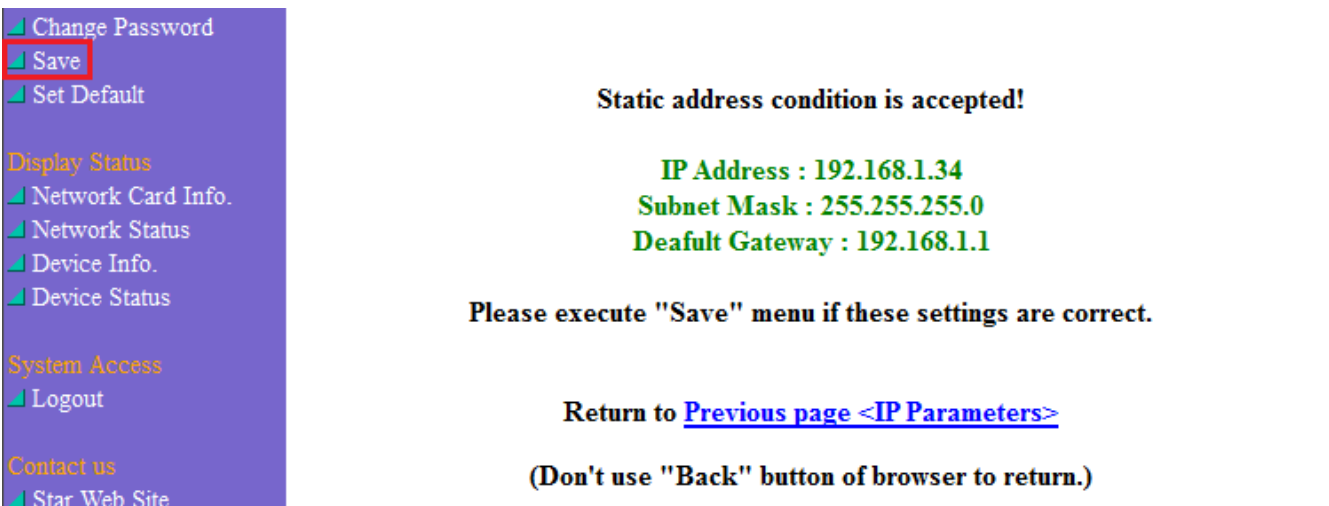
(No password)



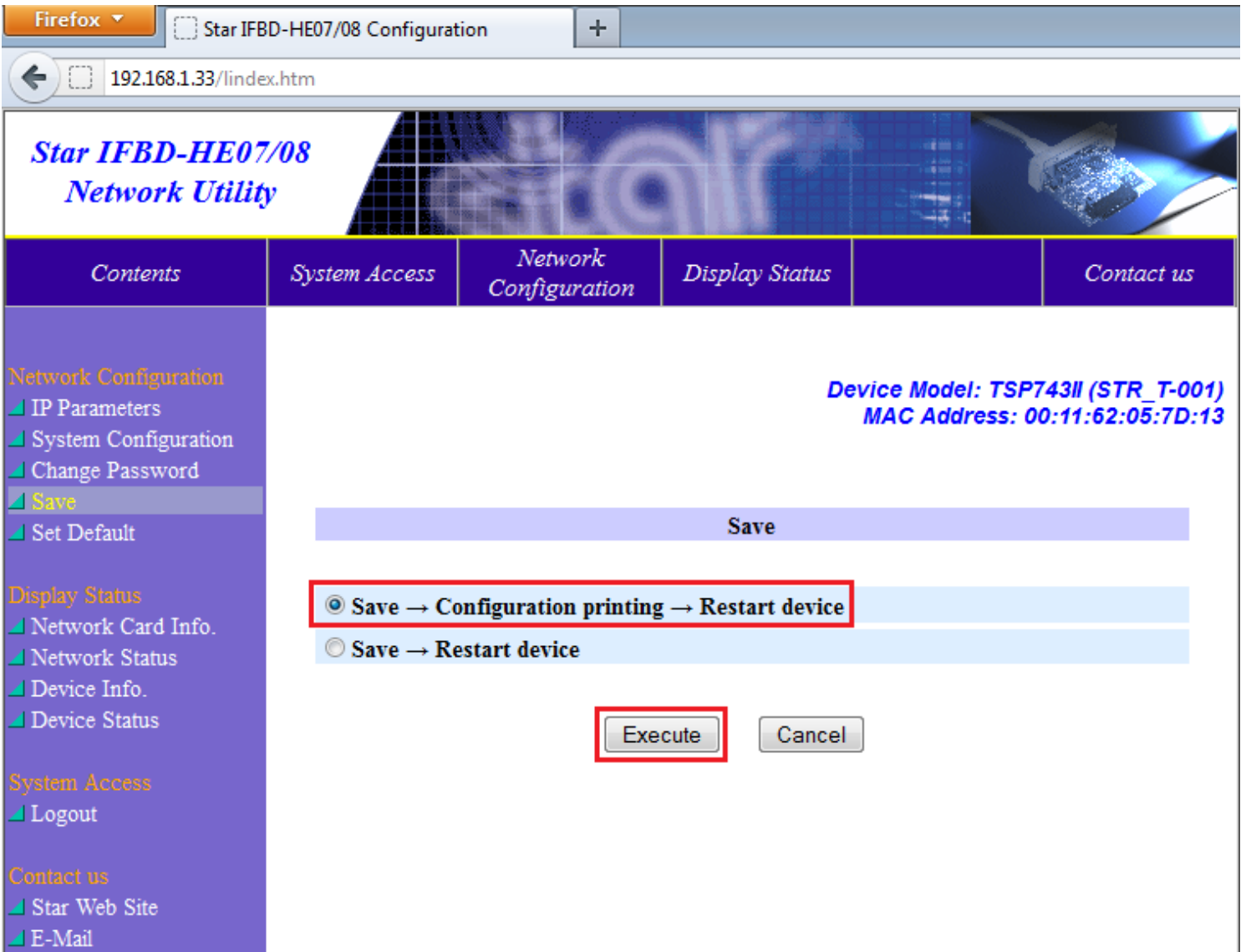
9. Click "IP Parameters" in the left menu bar.



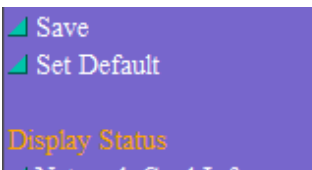
10. Select "Static". Then enter the desired Static IP Address, Subnet Mask, and Default Gateway. Click "Submit".



11. This page confirms the information set. Click "Save" in the left menu bar.

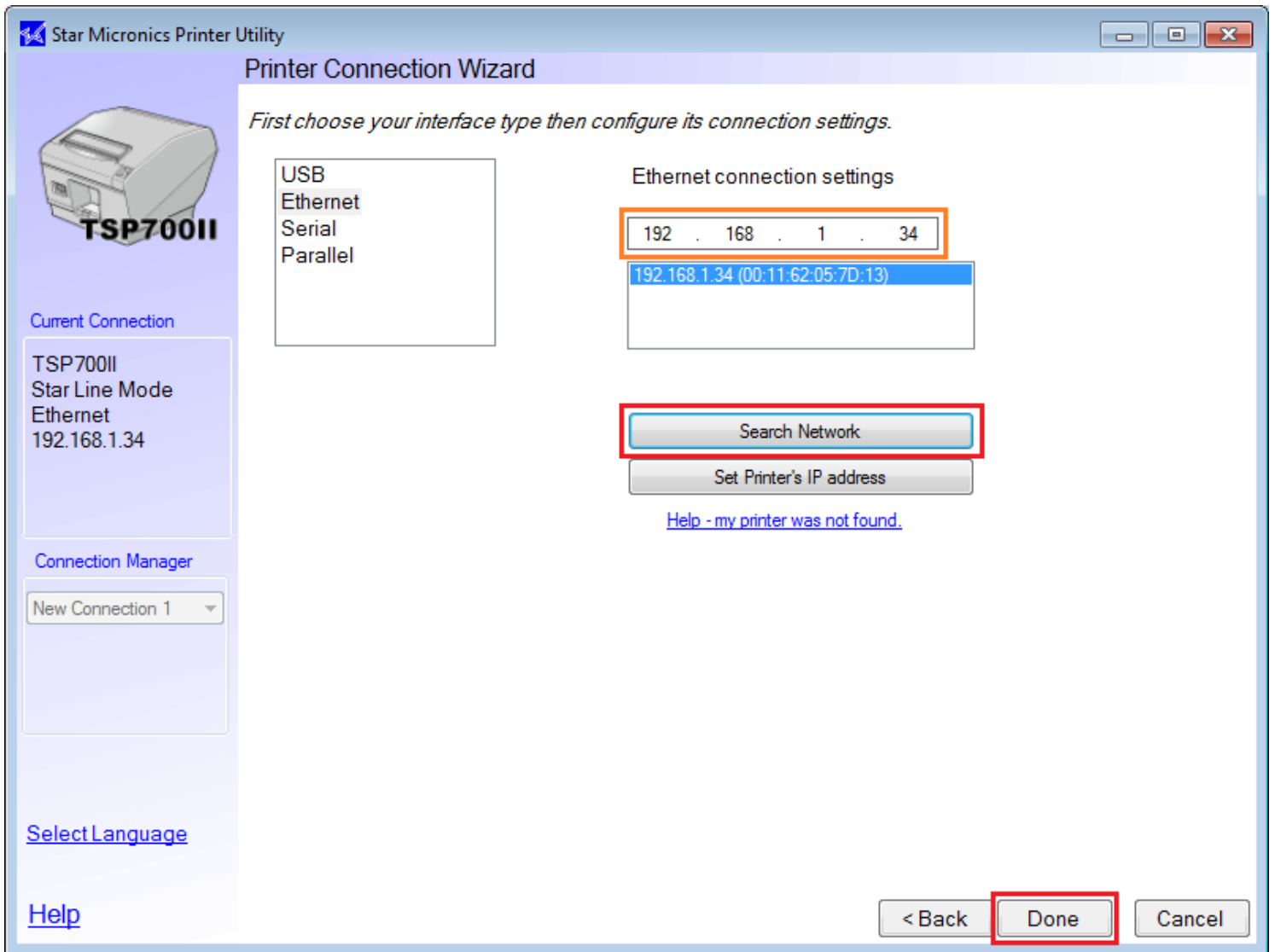


12. Click “Save → Configuration printing → Restart device” to save settings and print a test page.

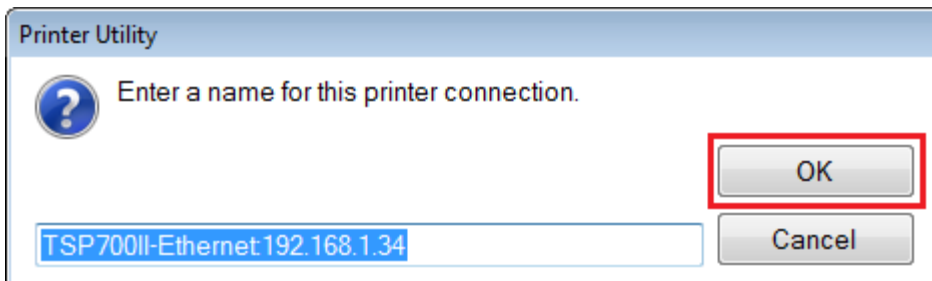


**Setting of network card was succeeded.
Please wait for device restart,
and close browser.**

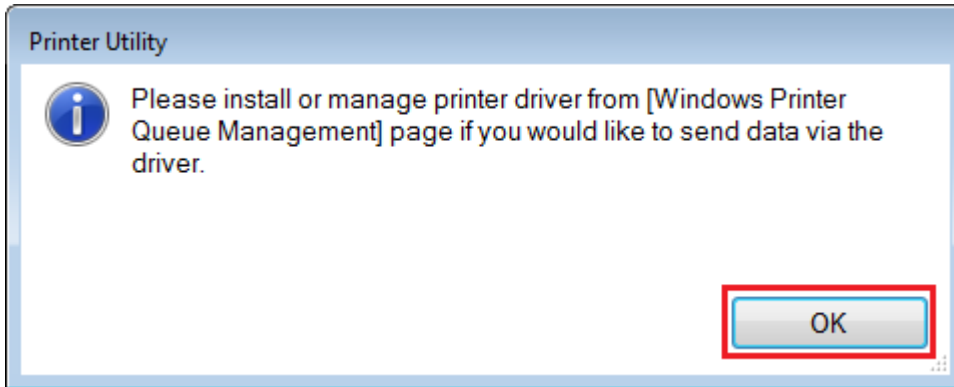
13. It will take about ten seconds for the printer to restart with the new configuration settings. At this point, close the browser window.



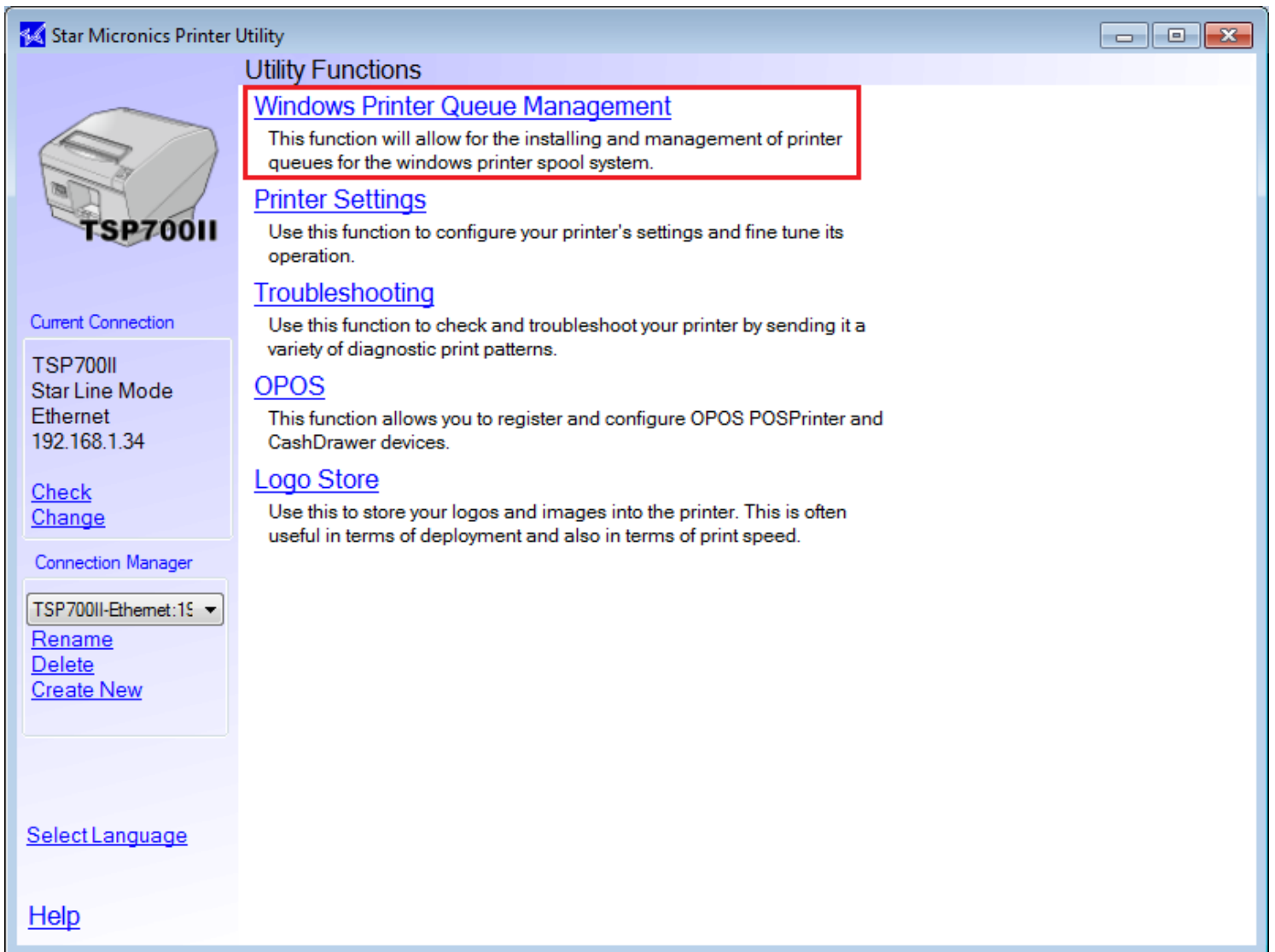
14. Back in StarPRNT, click “Search Network”. The new Static IP Address will appear in the orange box. Click “Done”.



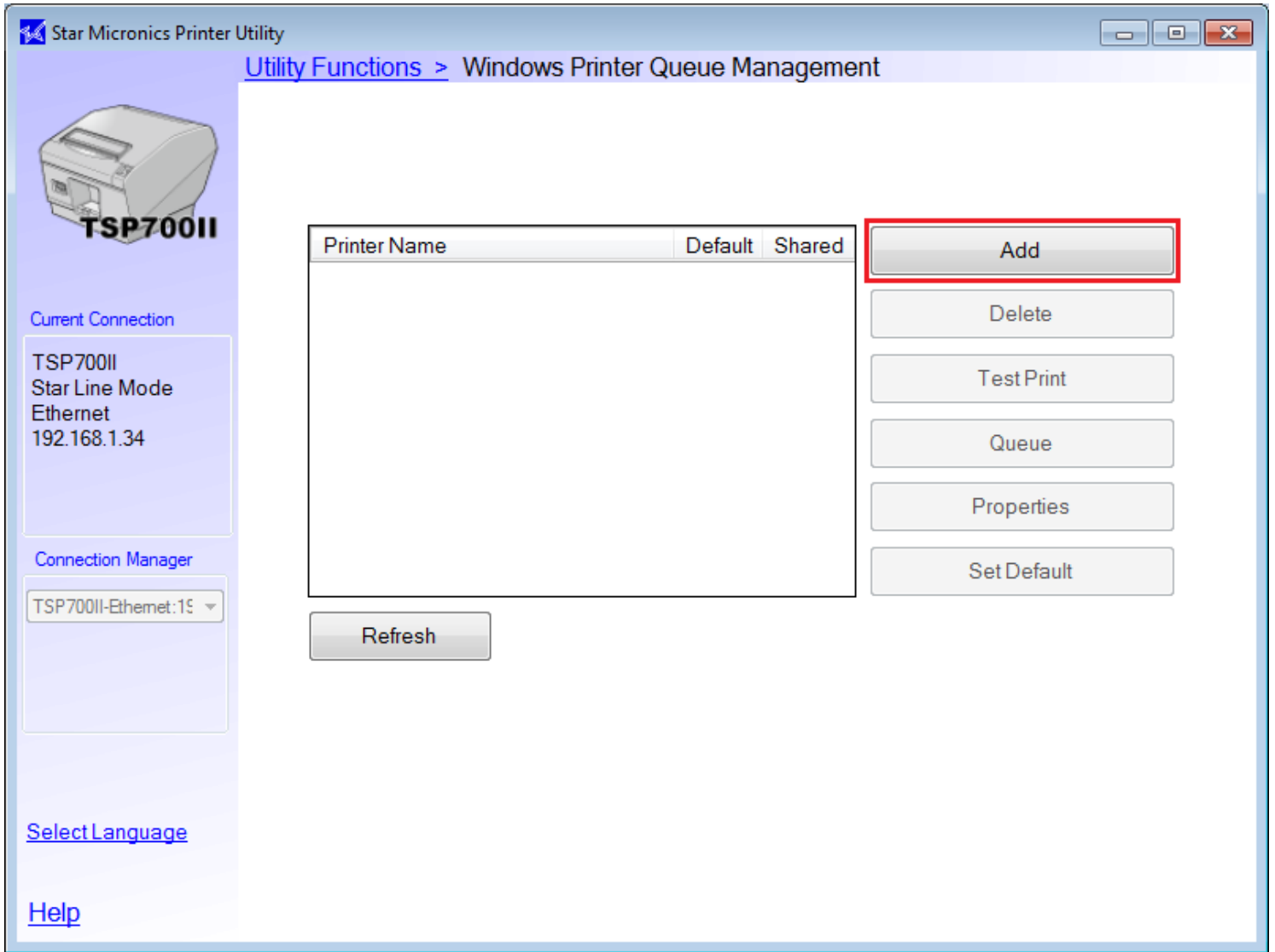
15. Enter a name to call the printer in the StarPRNT Utility. This will not change the printer name in the Printers and Devices (Printers and Faxes) folder.



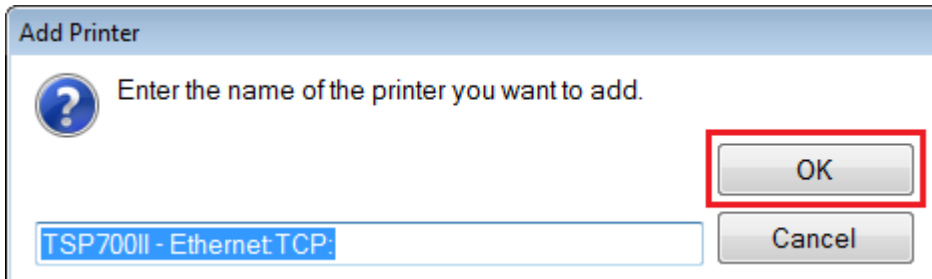
16. Click "OK".



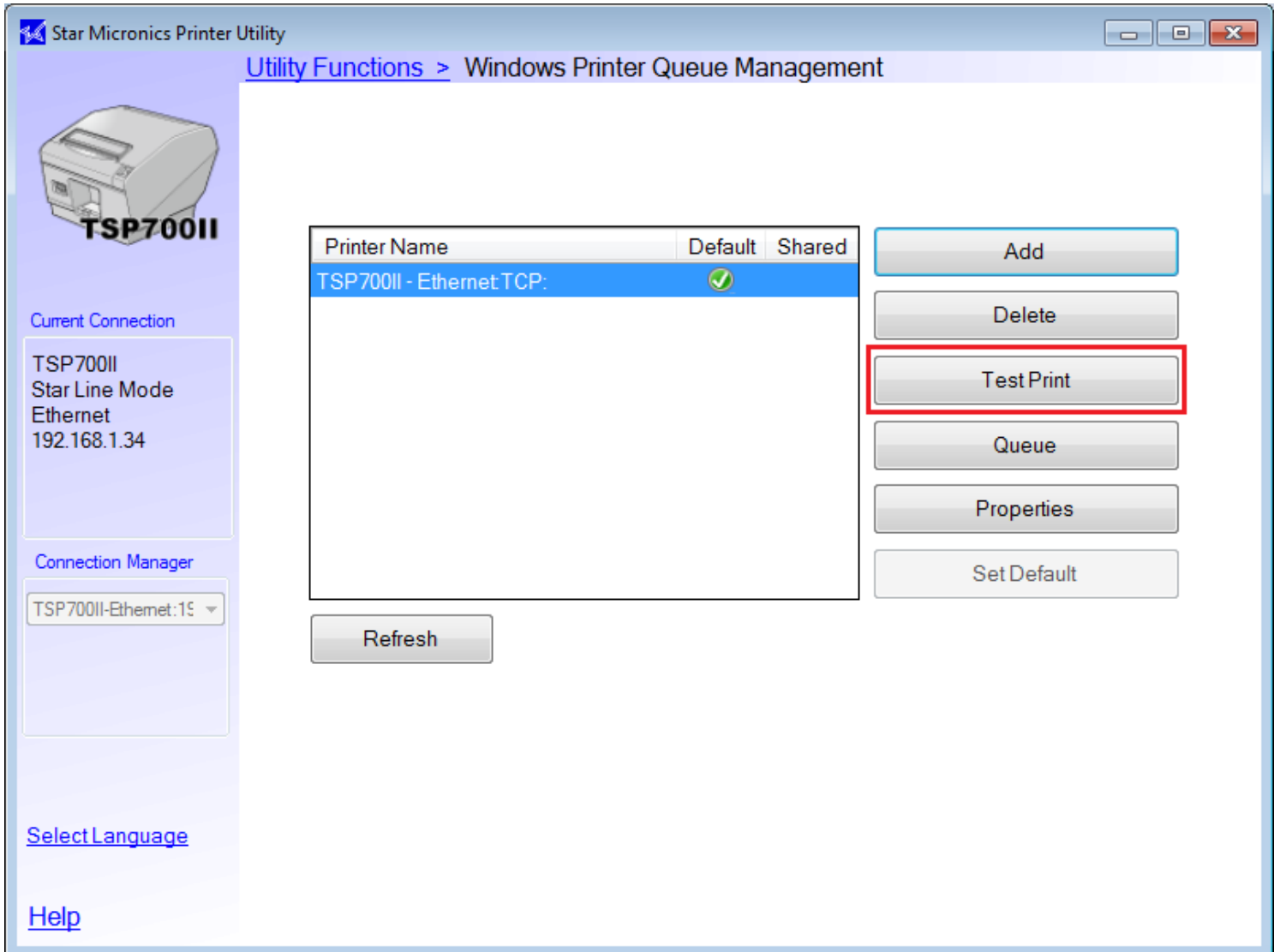
17. Click "Windows Printer Queue Management".



18. Click "Add".



19. Enter the printer name. This name will be used in the Windows Devices and Printers (Printers and Faxes) folder.



20. The printer is added. The name shown here is exactly the same as the printer queue added in the Windows Devices and Printers (Printers and Faxes) folder.

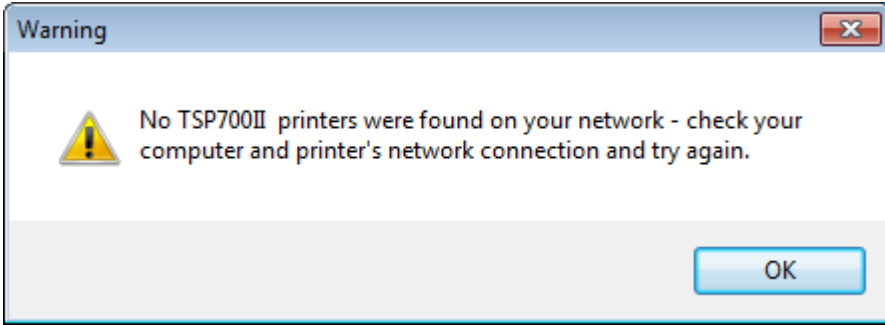
21. Click “Test Print” to confirm successful printing from Windows.

Congratulations! You have successfully configured your ethernet Star Printer with a static IP Address.

[Click here to jump to IV Brief Overview of StarPRNT Utility Sections.](#)

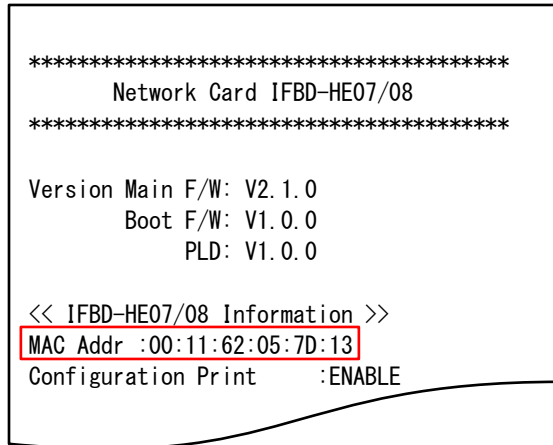
III. Manually Assigning an IP Address in StarPRNT

If StarPRNT could automatically discover the Star ethernet printer on the network, skip this section.



This message displays if the printer does not automatically have an IP Address assigned when connected to the network.

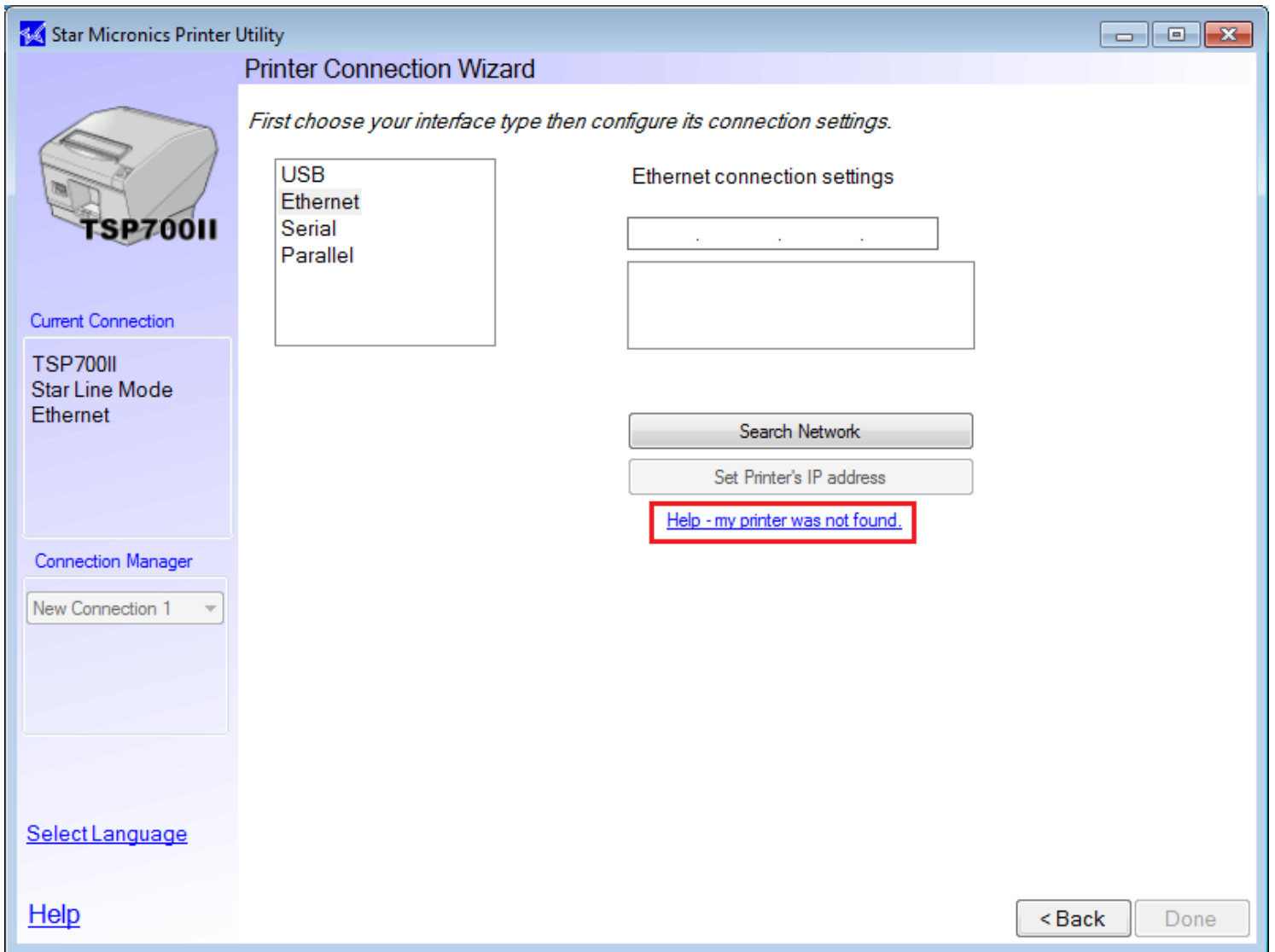
1. Ensure the printer is connected to the same network as the PC.



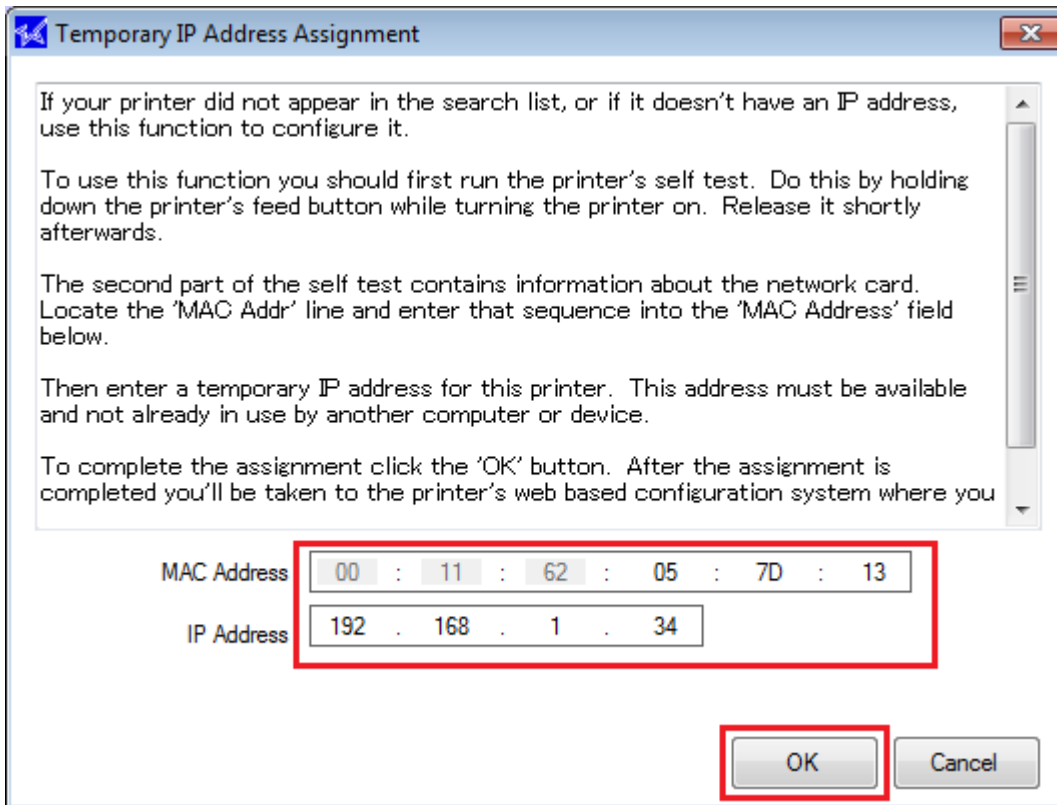
Above: Second self test result automatically prints with network information

2. Run a self test by following this procedure: Power off the printer. Press and hold the feed button while turning the power back on. Release the feed button as the printer’s first hardware self test prints immediately.

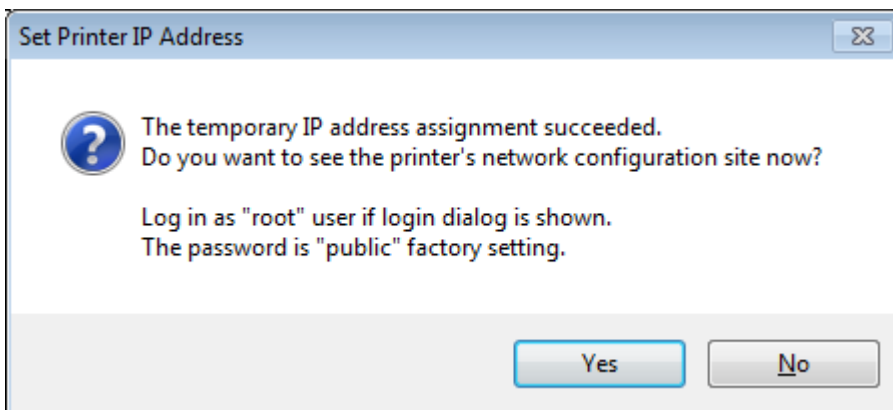
The Power and Caution LEDs (green and yellow) flash. The printer attempts to initialize itself on the network. About ten seconds after the first self test printed, a second self test will automatically print showing information about the ethernet interface, as shown in the above image. Keep this second print out, as the MAC address printed on it is needed soon.



3. Click “Help – my printer was not found.”



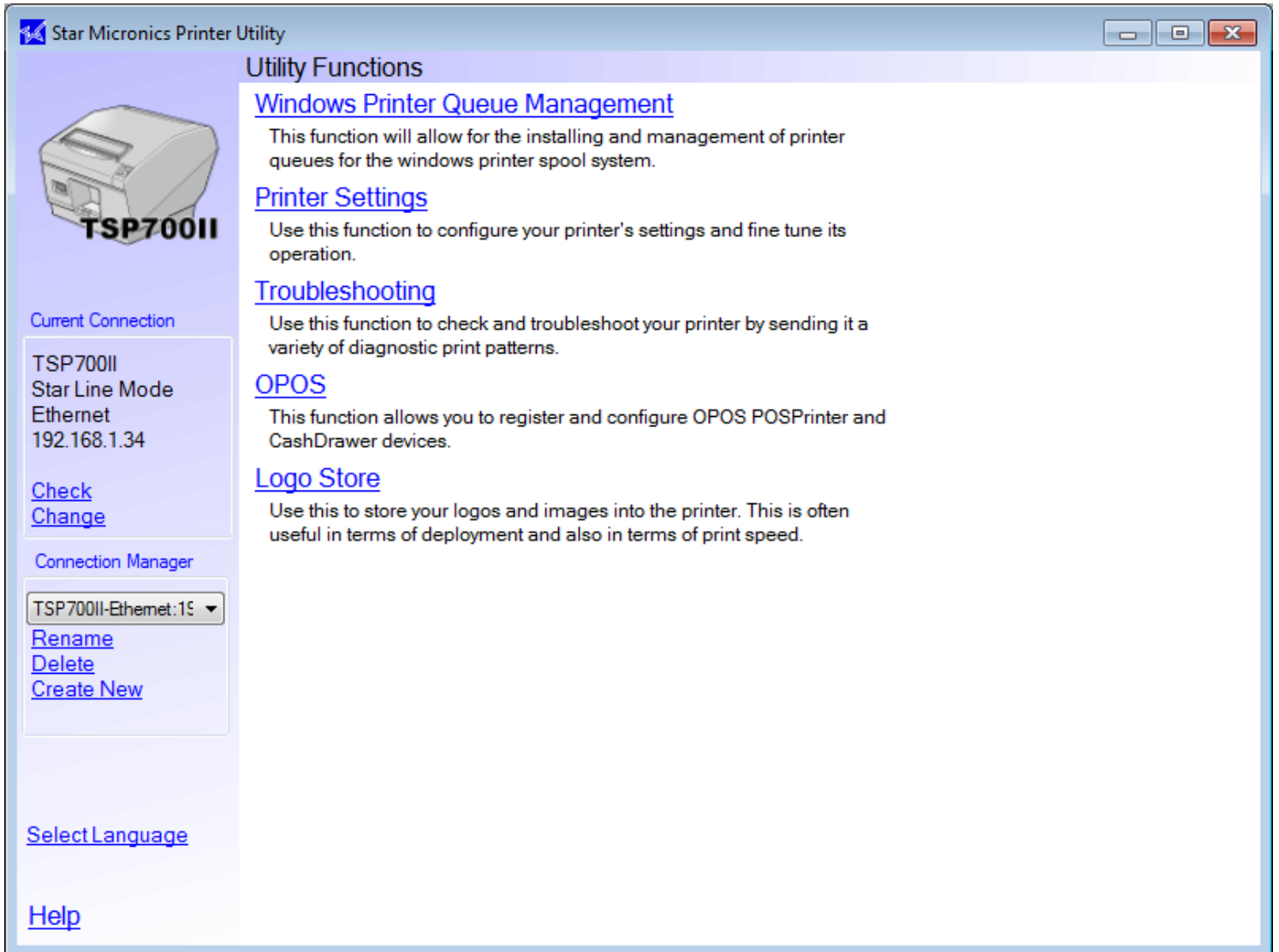
4. Type in the MAC Address printed on the self test. Then, type a temporary IP Address for the printer. Be sure the IP Address typed in is not already assigned to another device on the network.



5. The printer resets. Click "Yes" to assign a static IP address to the printer. All self tests printed can be discarded at this point.

[Click here to jump to the instructions detailing what to do next.](#)

IV. Brief Overview of StarPRNT Utility Sections



Star Micronics Printer Utility

Utility Functions

Windows Printer Queue Management
This function will allow for the installing and management of printer queues for the windows printer spool system.

Printer Settings
Use this function to configure your printer's settings and fine tune its operation.

Troubleshooting
Use this function to check and troubleshoot your printer by sending it a variety of diagnostic print patterns.

OPOS
This function allows you to register and configure OPOS POSPrinter and CashDrawer devices.

Logo Store
Use this to store your logos and images into the printer. This is often useful in terms of deployment and also in terms of print speed.

Current Connection
TSP700II
Star Line Mode
Ethernet
192.168.1.34

[Check Change](#)

Connection Manager
TSP700II-Ethernet:15

[Rename](#)
[Delete](#)
[Create New](#)

[Select Language](#)

[Help](#)

[Windows Printer Queue Management](#): User-friendly utility to Add/Delete/Rename the printer in Windows

[Printer Settings](#): Change memory switches to customize printer output

[Troubleshooting](#): Run diagnostic tests to confirm successful printing and other functionality

[OPOS](#): Easily set up, configure, or delete an OPOS device name

[Logo Store](#): Customize a graphic and save it to the printer to brand receipts



Star Micronics is a global leader in the manufacturing of small printers. We apply over 50 years of knowhow and innovation to provide elite printing solutions that are rich in stellar reliability and industry-respected features. Offering a diverse line of Thermal, Hybrid, Mobile, Kiosk and Impact Dot Matrix printers, we are obsessed with exceeding the demands of our valued customers every day.

We have a long history of implementations into Retail, Point of Sale, Hospitality, Restaurants and Kitchens, Kiosks and Digital Signage, Gaming and Lottery, ATMs, Ticketing, Labeling, Salons and Spas, Banking and Credit Unions, Medical, Law Enforcement, Payment Processing, and more!

High Quality POS Receipts, Interactive Coupons with Triggers, Logo Printing for Branding, Advanced Drivers for Windows, Mac and Linux, Complete SDK Packages, Android, iOS, Blackberry Printing Support, OPOS, JavaPOS, POS for .NET, Eco-Friendly Paper and Power Savings with Reporting Utility, ENERGY STAR, MSR Reading, *future*PRNT, StarPRNT... How can Star help you fulfill the needs of your application?

Don't just settle on hardware that won't work as hard as you do. Demand everything from your printer. Demand a Star!

Star Micronics Worldwide

Star Micronics Co., Ltd.
536 Nanatsushinya
Shimizu-ku, Shizuoka 424-0066
Japan
+81-54-347-2163
<http://www.star-m.jp/eng/index.htm>

Star Micronics America, Inc.
1150 King Georges Post Road
Edison, NJ 08837
USA
1-800-782-7636
+1-732-623-5500
<http://www.starmicronics.com>

Star Micronics EMEA
Star House
Peregrine Business Park, Gomm Road
High Wycombe, Buckinghamshire HP13 7DL
UK
+44-(0)-1494-471111
<http://www.star-emea.com>

Star Micronics Southeast Asia Co., Ltd.
Room 2902C. 29th Fl. United Center Bldg.
323 Silom Road, Silom Bangrak, Bangkok 10500
Thailand
+66-2-631-1161 x 2
<http://www.starmicronics.co.th/>