



Supernico Workstation Solutions

CES 2021



**If you are not familiar with
Supermicro...**

Here is Supermicro At-a-Glance



**FOUNDED AND
HEADQUARTERED IN
SILICON VALLEY**



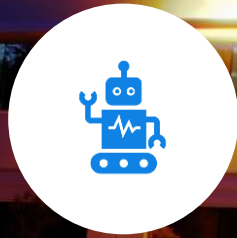
**\$3.5 BILLION IN REVENUE
IN FY19**



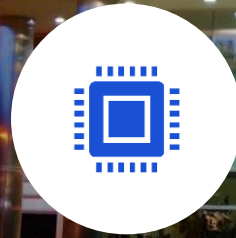
**GLOBAL OPERATIONS IN
100+ COUNTRIES**



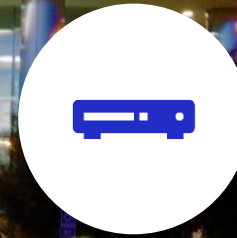
**RANKED AMONG THE
FORTUNE 1000
COMPANIES**



**2M SQUARE FEET GLOBAL
MANUFACTURING, OVER
50% IN US**



**ENGINEERING EXPERTISE
WITH THE INDUSTRY'S
BROADEST PRODUCT
PORTFOLIO**



**1.2M SERVER AND
STORAGE NODES SHIPPED
IN FY19, #5 SERVER
VENDOR PER IDC**



**FIRST-TO-MARKET
LEADER IN ENTERPRISE,
CLOUD, AI, AND EDGE**

Why Supermicro Workstation?

A server workstation is shown in a rack. The workstation has a power supply unit on the left, a fan in the center, and a network interface on the right. The text is overlaid on a semi-transparent dark grey box.

Built and Tested in USA

All US Workstations are assembled and tested at our San Jose production facility.

For EMEA and APAC customers, we built our workstations at production facility in Netherlands and Taiwan.

Featuring the latest technologies

We support and validate a wide array of latest components, i.e. NVMe storage, latest CPU and GPU, to optimally configure the system to your need.

All workstations use industry standard components for high degree of flexibility and upgradability.



Local engineering support and global service

All support issues are managed by our local, in-house, support engineers and product managers.

Global Services, and next day onsite options are available.

For Manufacturing and Product Design

Whether you are building complex 3D models, rendering photo-realistic designs, or simulating product performance, Supermicro Workstation solutions have the best product selections and configurations to accelerate your productivity.

Recommended Configurations:



	For Design and Modeling	For smaller Electromagnetics, CFD and Mechanical simulations	For larger Electromagnetics, CFD and Mechanical simulations
Barebone	Supermicro SYS-5039A-I	Supermicro SYS-5049A-T	Supermicro SYS-7039A-I
Processor	Intel® Xeon® W-2265, 12 cores at 3.5Ghz	Intel® Xeon® Scalable processor Gold 6212U, 24 Core at 2.4Ghz	Dual Intel® Xeon® Scalable processor Gold 6238R, 28 Core at 2.2Ghz
CPU Frequency	3.5Ghz base / 4.8Ghz turbo	2.4Ghz base / 3.7Ghz turbo	2.2Ghz base / 4.0Ghz turbo
Memory	128GB DDR4-2933 ECC Registered Memory	192GB DDR4-2933 ECC Registered Memory	256GB DDR4-2933 ECC Registered Memory
Graphics	NVIDIA® Quadro® P2200	NVIDIA® Quadro® RTX 4000	NVIDIA® Quadro® RTX 6000
Primary Storage	1TB M.2 NVMe	1TB M.2 NVMe	2x 1TB M.2 NVMe in RAID 0
Secondary Storage	6TB 3.5" SATA HDD	3x 6TB 2.5" SATA SSD	2x 2TB 2.5" SATA SSD in RAID 0 or 1
Front I/O	2x USB 3.1 Gen 1, Mic and Headset	2x USB 3.1 Gen 1, Mic and Headset	2x USB 3.1 Gen 1, Mic and Headset
Network	Intel® I219LM GbE LAN Aquantia AQC108 5GbE LAN	Intel® I210-AT GbE LAN Aquantia AQC107 10GbE LAN GbE LAN for IPMI	Dual Intel GbE LAN
Available Expansion	2x PCIe x16 1x PCIe x4	5x PCIe x16	3x PCIe x16 1x PCIe x8

For Media and Entertainment

Major movie studios, post houses and VFX studios select Supermicro server solutions for reliability, performance and scalability. Supermicro now delivers the same features and values in certified workstation solutions.

Recommended Configurations:



	For 3D Modeling and Animations	For Rendering	For Larger Rendering
Barebone	Supermicro SYS-5039A-I	Supermicro SYS-5049A-T	Supermicro SYS-7049A-T
Processor	Intel® Xeon® W-2255, 10 cores at 3.7Ghz	Intel® Xeon® Scalable processor Gold 6212U, 24 Core at 2.4Ghz	Dual Intel® Xeon® Scalable processor Gold 6230R, 26 Core at 2.4Ghz
CPU Frequency	3.7Ghz base / 4.7Ghz turbo	2.4Ghz base / 3.7Ghz turbo	2.1Ghz base / 4.0Ghz turbo
Memory	64GB DDR4-2933 Registered ECC	128GB Registered ECC DDR4-2933 Memory	128GB DDR4-2933 Registered ECC
Graphics	NVIDIA® Quadro® RTX4000	NVIDIA® Quadro® RTX 5000	NVIDIA® Quadro® RTX 6000
Primary Storage	1TB M.2 NVMe	2x 1TB M.2 NVMe in RAID 0	2x 1TB M.2 NVMe in RAID 0
Secondary Storage	2x 6TB 3.5" SATA HDD	4x 6TB 2.5" SATA SSD	4x 2TB 2.5" SATA SSD
Front I/O	2x USB 3.1 Gen 1, Mic and Headset	2x USB 3.1 Gen 1, Mic and Headset	2x USB 3.1 Gen 1, Mic and Headset
Network	Intel® I219LM GbE LAN Aquantia AQC108 5GbE LAN	Intel® I210-AT GbE LAN Aquantia AQC107 10GbE LAN GbE LAN for IPMI	Intel® I219LM GbE LAN Aquantia AQC108 5GbE LAN
Available Expansion	2x PCIe x16 1x PCIe x4	5x PCIe x16	2x PCIe x16 1x PCIe x4



For Architecture, Engineering and Construction

Powered by NVIDIA® Quadro® professional GPUs, high clock frequency Intel® Core™ processor, and enterprise-grade NVMe storage, Supermicro Workstations are fast, reliable, and cost-effective for your business needs.

Recommended Configurations:



	For 2D Design	For 3D Modeling and Animation
Barebone	Supermicro SYS-5039C-T	Supermicro SYS-5039AD-I
Processor	Intel® Xeon® E-2286, 6 cores at 4.0Ghz	Intel® Core™ i9-10900X processor , 10 Core at 3.7Ghz
CPU Frequency	4.0Ghz base / 4.9Ghz turbo	3.7Ghz base / 4.7Ghz turbo
Memory	32GB DDR4-2933 ECC UDIMM	64GB DDR4-2933 non-ECC UDIMM Memory
Graphics	NVIDIA® Quadro® P2200	NVIDIA® Quadro® RTX 4000
Primary Storage	512GB M.2 NVMe	1TB M.2 NVMe
Secondary Storage	2TB 3.5" SATA HDD	3x 6TB 2.5" SATA SSD
Front I/O	2x USB 3.1 Gen 1, Mic and Headset	2x USB 3.1 Gen 1, Mic and Headset
Network	Dual Intel GbE LAN	Intel® I210-AT GbE LAN Aquantia AQC107 10GbE LAN GbE LAN for IPMI
Available Expansion	1x PCIe x16 1x PCIe x4 1x PCIe x1 1x PCI 32bit	3x PCIe x16 1x PCIe x1

For Deep Learning and AI

Delivering incredible performance running Deep Learning applications, the Supermicro SYS-5049A-TR is an ideal development workstation designed for engineers or researchers who need a robust system with high CPU and GPU computational core counts right at their desks.

Recommended Configurations:



	Performance	High Performance
Barebone	Supermicro SYS-5049A-TR	Supermicro SYS-5049A-TR
Processor	Intel® Xeon® Scalable processor Gold 6208U, 16 Core at 2.9Ghz	Intel® Xeon® W-3245, 16 Core at 3.2Ghz
CPU Frequency	2.9Ghz base / 3.9Ghz turbo	3.2Ghz base / 4.6Ghz turbo
Memory	128GB DDR4-2933 ECC Registered Memory	192GB DDR4-2933 ECC Registered Memory
Graphics	2x NVIDIA® Quadro® RTX6000	4x NVIDIA® Quadro® RTX6000
Primary Storage	1TB M.2 NVMe	2x 1TB 2.5" SATA SSD
Secondary Storage	6TB 3.5" SATA HDD	3x 2TB 2.5" SATA SSD
Front I/O	2x USB 3.1 Gen 1, Mic and Headset	2x USB 3.1 Gen 1, Mic and Headset
Network	Intel® I210-AT GbE LAN Aquantia AQC107 10GbE LAN GbE LAN for IPMI	Intel® I210-AT GbE LAN Aquantia AQC107 10GbE LAN GbE LAN for IPMI
Available Expansion	None	None

Where to Buy:



US:



EMEA:





Got questions, comments?

ws@supermicro.com

DISCLAIMER

Super Micro Computer, Inc. may make changes to specifications and product descriptions at any time, without notice. The information presented in this document is for informational purposes only and may contain technical inaccuracies, omissions and typographical errors. Any performance tests and ratings are measured using systems that reflect the approximate performance of Super Micro Computer, Inc. products as measured by those tests. Any differences in software or hardware configuration may affect actual performance, and Super Micro Computer, Inc. does not control the design or implementation of third party benchmarks or websites referenced in this document. The information contained herein is subject to change and may be rendered inaccurate for many reasons, including but not limited to any changes in product and/or roadmap, component and hardware revision changes, new model and/or product releases, software changes, firmware changes, or the like. Super Micro Computer, Inc. assumes no obligation to update or otherwise correct or revise this information.

SUPER MICRO COMPUTER, INC. MAKES NO REPRESENTATIONS OR WARRANTIES WITH RESPECT TO THE CONTENTS HEREOF AND ASSUMES NO RESPONSIBILITY FOR ANY INACCURACIES, ERRORS OR OMISSIONS THAT MAY APPEAR IN THIS INFORMATION.

SUPER MICRO COMPUTER, INC. SPECIFICALLY DISCLAIMS ANY IMPLIED WARRANTIES OF MERCHANTABILITY OR FITNESS FOR ANY PARTICULAR PURPOSE. IN NO EVENT WILL SUPER MICRO COMPUTER, INC. BE LIABLE TO ANY PERSON FOR ANY DIRECT, INDIRECT, SPECIAL OR OTHER CONSEQUENTIAL DAMAGES ARISING FROM THE USE OF ANY INFORMATION CONTAINED HEREIN, EVEN IF SUPER MICRO COMPUTER, Inc. IS EXPRESSLY ADVISED OF THE POSSIBILITY OF SUCH DAMAGES.

ATTRIBUTION

© 2020 Super Micro Computer, Inc. All rights reserved.

Thank You



www.supermicro.com