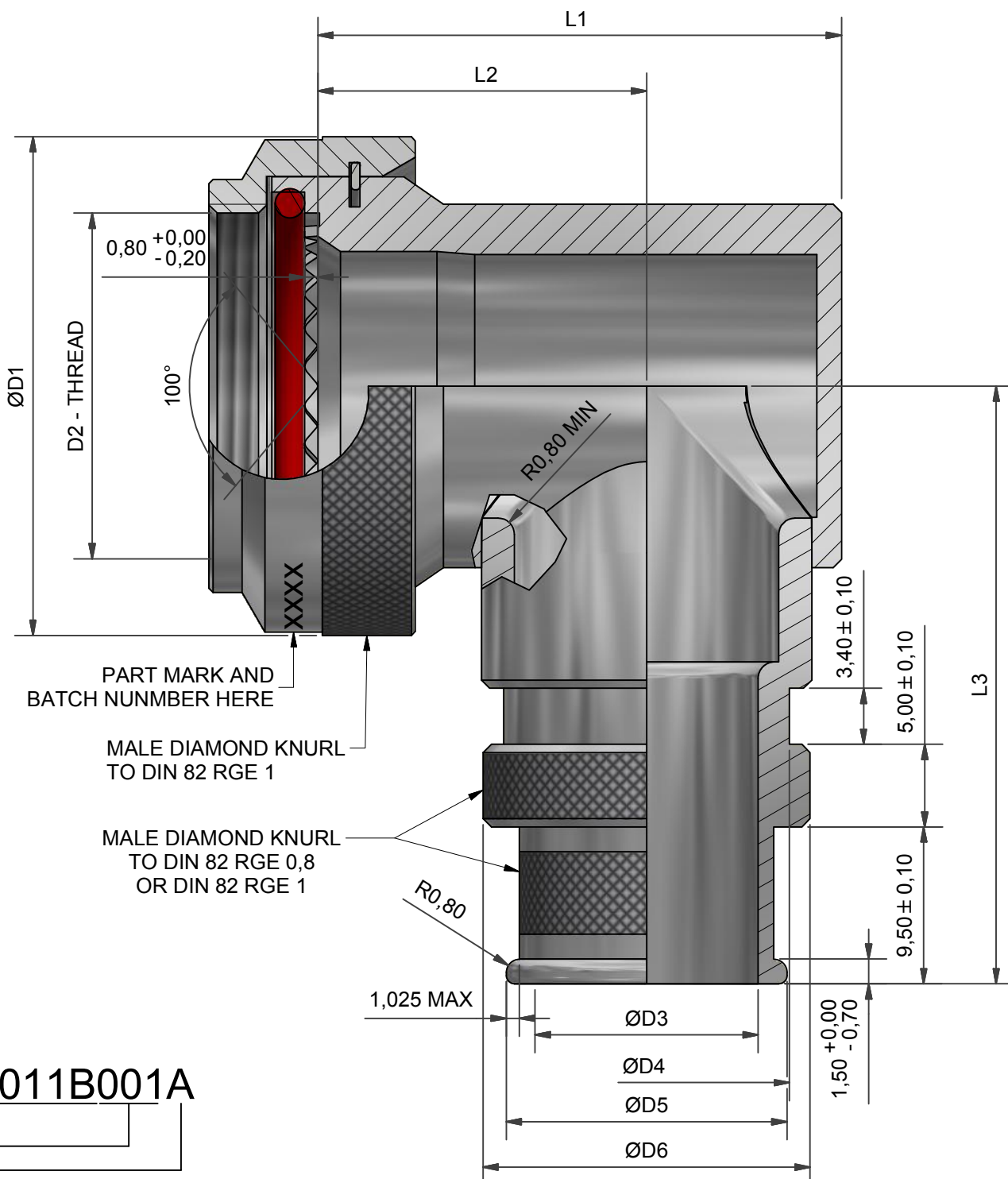




VG PART NUMBERING

VG95319-1011B001A

VG SERIES _____
 DASH NUMBER _____
 MATERIAL AND FINISH OPTION _____
 A = ALUMINIUM ALLOY - CADMIUM OLIVE DRAB OVER ELECTROLESS NICKEL
 B = ALUMINIUM BRONZE - SHOT BLAST
 S = STAINLESS STEEL - PASSIVATED



POLAMCO PART NUMBERING

PVG1BH3-001-1-B

POLAMCO SERIES _____
 INTERFACE _____
 ANGLE (3=90°) _____
 DASH NUMBER (TABLE 1) _____
 MATERIAL _____
 FINISH (TABLE 2) _____

ANY OPTIONS OUTSIDE THOSE POSSIBLE WITH VG PART NUMBER ARE AVAILABLE BUT WILL NOT BE VG APPROVED PARTS. FOR FULL LIST OF MATERIAL AND PLATING OPTIONS PLEASE VISIT OUR WEBSITE

TABLE 1

DASH NO.	SHELL SIZE	ØD1 MAX	D2	ØD3 ± 0,2	ØD4 ± 0,1	ØD5 ± 0,1	ØD6 ± 0,1	L1 MAX	L2 MAX	L3 MAX	NO. OF TEETH	MASS (g) MAX
001	09	19,5	M12 X 1	9,0	12,8	12,5	15,3	24,0	16,4	31,2	12,0	30,0
002	11	23,0	M15 X 1	12,5	16,3	16,0	18,8	27,8	18,4	32,8	16,0	30,0
003	13	25,9	M18 X 1	12,0	15,8	15,5	18,3	29,5	20,0	34,2	20,0	35,0
004	15	30,2	M22 X 1	13,5	17,3	17,0	19,8	31,9	21,2	36,4	24,0	45,0
005	17	33,0	M25 X 1	12,8	16,6	16,3	19,1	35,0	22,8	37,8	28,0	55,0
006	17	33,0	M25 X 1	23,5	27,3	26,9	29,8	37,7	22,8	37,8	28,0	55,0
007	19	35,9	M28 X 1	18,0	21,8	21,6	24,3	37,4	24,0	39,2	32,0	65,0
008	21	39,2	M31 X 1	19,0	22,8	22,6	25,3	40,6	25,6	40,9	36,0	75,0
009	23	42,4	M34 X 1	23,0	26,8	26,4	29,3	43,8	27,1	42,5	40,0	85,0
010	25	45,0	M37 X 1	28,5	32,3	32,0	34,8	46,3	28,4	43,8	44,0	95,0

TABLE 2

CODE	FINISH
C	ELECTROLESS NICKEL
B	CADMIUM OLIVE DRAB OVER ELECTROLESS NICKEL
ZB	ZINC COBALT OLIVE DRAB OVER ELECTROLESS NICKEL
ZN	ZINC NICKEL BLACK PASSIVATE OVER ELECTROLESS NICKEL

SEE SS0076 FOR FULL RANGE OF FINISH OPTIONS

DRAWN		DATE		3RD ANGLE PROJECTION NOT TO SCALE	PART NUMBER: VG95319-1011B SERIES			
P.FRYER		08/07/2010			TITLE: BACKSHELL			
DESIGN APPROVAL		DATE		UNLESS OTHERWISE SPECIFIED ALL DIMENSIONS IN MILLIMETRES GENERAL TOL LINEAR +/-0,25MM ANGULAR +/- 1°	ASSY USED ON: VG95319-1006, VG95319-1007, VG95319-1008, VG96938-3 (MIL-DTL-38999 SERIES III)			
DOC TYPE	Customer Drawing				THIS DRAWING IS COPYRIGHT AND THE PROPERTY OF POLAMCO LTD IT MUST NOT BE COPIED, USED FOR MANUFACTURE OR OTHERWISE DISCLOSED WITHOUT PRIOR WRITTEN CONSENT OF THE COMPANY.			
ISSUE/REV	DCR	WEIGHT		POLAMCO LTD, WESTON LOCK, LOWER BRISTOL ROAD, BATH BA2 1EP		SHT	DRAWING NO:	
EA	---	31.20 g				1	P17366	
NCAGE CODE U5792								