

## Phantom 75 LED Spot

Code DM-SH40188 Black

DM-SH40188W White

- 24.500 Lux @ 1 M
- 7 Rotating Gobos & 8 Colors
- 16 Built-in programs selectable by DMX
- Gobo shake, gobo rotate and 3-facet prism
- Motorized focus

### Specifications

#### Output:

Light Source: 1 x 75 W White LED

Lux @ 1 m: 34,500

Beam Angle: 17° - 20° Manual

Max. Ambient Temperature: 40°C / 104°F

#### Electrical:

Power Input: 100-240vAC

Power Consumption: 170 W max. at full output

Current Draw: 16.5 amps

#### Control:

Operating Modes: DMX512 , Display for auto,  
Sound control & Master/Slave

DMX Channels: Advanced 14ch /Basic 8ch

#### Optical system:

Dimmer: 0-100%

Strobe: 0-20Hz

Focus: Motorized

Prism: 3-facet prism

#### Movement:

Pan/Tilt: 540°/270°

Pan/Tilt Resolution: 16-bit

Special: Pan/Tilt movement blackout,

User-selectable Pan & Tilt ranges,

540°/360°/180° , Reverse Pan / Tilt movement

#### Gobos & Color:

Gobo: 2 glass + 5 metal gobos (replaceable)

Gobo functions: Gobo-flow effect, Gobo shake

Rotation: Bi-directional

Gobo inner diameter: 20 mm gobo outer diameter: 24 mm

Colors: 8 dichroic-filters + white Color functions: Split colors,  
Rainbow-flow effect

#### Physical:

Fixture Connection: XLR Data in/out, IEC Power in  
Size (WxDxH): 13.4" x 9.8" x 17.6"

Weight: 11 kgs/24.2 lbs

Color: Black, White

Material: Metal and Flame-retardant plastic

The Showtec Phantom 75 LED Spot is a medium size powerful moving head with a 75 W White LED light-source. It comes complete with 7 Gobos, 8 dichroic filters and lots of extra functions like gobo-shake, gobo-rotate, prism, split & rainbow colors. Because of the LED source the shutter is electronic not mechanical. Focus is motorized and it has a mechanical zoom. You can choose between 8 or a 14 DMX channels. If you like to operate without controller you can use the 16 built-in programs which can run automatically, sound-active or in master/slave mode. The stylish design and lightweight housing make this moving head very attractive and ergonomic. The gobos can be changed very easily by a handy lid.



# Phantom 50 LED Spot

Code DM-SH40200 Black

DM-SH40187W White



- 18.500 Lux @ 1 M
- 7 Rotating Gobo's & 9 Colors
- Easy accessible replaceable gobo's
- Gobo shake, gobo rotate and 3-facet prism
- 16 Built-in programs selectable by DMX

The Showtec Phantom 50 LED Spot is the bigger brother of the 25 LED Spot and has a 50 W white LED light source. Besides the stronger output, the 50 LED Spot also has some extra functions like rotating gobos and a 3-facet prism. The 50 LED Spot has 7 gobos with shake effect and the 9 dichros are the same as the 25 LED Spot. This makes them easy to combine. The 50 LED Spot can also be used as a master for the 25 LED Spot in a master/slave setup. It has 2 personalities, an advanced 13-channel and a basic 8-channel setting. The weight is 12.32 lbs and it has only one clamp bracket which makes it easy to handle and position in truss systems.

## Specifications

### Output:

Light Source: 1 x 50 W White LED

Lux @ 1m: 18.500

Beam Angle: 17°

Max. Ambient Temperature: 40°C / 104°F

### Electrical:

Power Input: 100-240vAC

Power Consumption: 93 W max. at full output

Current Draw: 2 amps

### Control:

Display for auto and Sound control

Operating Modes: DMX512

DMX Channels: Advanced 13ch /Basic 8ch

### Optical system:

Dimmer: 0-100%

Strobe: 0-20Hz

Focus: Manual focus

Prism: 3-facet prism

### Movement:

Pan/Tilt: 540°/270°

Pan/Tilt Resolution: 16-bit

Special: Pan/Tilt movement blackout,

User-selectable Pan & Tilt ranges, 540°/360°/180°

Reverse Pan/Tilt movement

### Gobos & Colors:

Gobo: 2 glass + 5 metal gobos (replaceable)

Gobo functions: Gobo-flow effect, Gobo shake

Rotation: Bi-directional

Gobo inner diameter: 20 mm gobo outer diameter: 24 mm

Colors: 8 dichroic-filters + white

Color Functions: Split colors, Rainbow-flow effect

### Physical:

Fixture Connection: XLR Data in/out, IEC Power in

Size (WxDxH): 8.3" x 8.85" x 13.4"

Weight: 5.6 kgs/12.32 lbs

Color: Black, White

Material: Metal & Flame-retardant plastic



The Showtec Performer 1000 LED is an extremely bright and compact lighting fixture that is suitable for a wide range of applications. Fantastic dimming and smooth zoom range provides lighting designers with an incredibly useful lighting tool.

**Specifications**

**Output:**

Light Source: 9 LEDs  
Max. Flux: 3,090 Lumens  
Peak Intensity: 27,000 cd  
Color Rendering: >83Ra  
Color Temperature: 3100 K  
Refresh rate: 600Hz

**Electrical:**

Power Input: 100-240vAC  
Max. Power: 100 W  
Current Draw: 3 amps

**Control:**

Operating Modes: DMX512  
DMX Channels: 1, 2, 3

**Optical System:**

Dimmer: 0-100%  
Manual Zoom: 10° - 60°

**Physical:**

Fixture Connection: DMX in/out, power in/out  
Cooling: Forced air  
Operation Temperature: -20°C – 40°C  
Size: 12.8" x 11.1" x 10.5"  
Weight: 5.5 kgs/ 12.1 lbs  
Color: Black  
Material: Aluminum



**Optional Accessories for DL-SH33030**

**Code**

TA-BDRSH33032 Barndoor Performer 1000 - Size: 6.25"

TA-FRAMESH33033 Filter Frame Performer 1000 - Size: 6.25"



# Performer 2000 LED Fresnel, 3100 K

Code TF-SH33040



- LED light source
- Wide Electric Zoom Range
- DMX control
- Color temperature 3100 K

The Showtec Performer 2000 LED Fresnel brings a new revolution in theatre spots with LED light source. With only 16 LED's the fixture can create over 5,300 Lumen / 10,000 lux (@ 2 m). For optimal flexibility, the Performer 2000 LED Fresnel has a motorized zoom by DMX which can be adjusted between 13 and 41 degrees. On the backside it has full connectivity with 3-Pin and 5-Pin XLR connectors as well as Neutrik powerCon in/out. It's built-in DIM4 dimming technology ensure smooth dimming like a traditional tungsten fixture. Also, the back panel has manual control for local applications. The Performer 2000 LED Fresnel is a true workhorse for theatres, TV-studio and rental.

## Specifications

### Output:

Light Source: 16 LEDs  
Max. Flux: 5,300 Lumens  
Peak Intensity: 41900 cd  
Color Rendering: >83Ra  
Color Temperature: 3100 K  
Refresh rate: 600Hz

### Electrical:

Power Input: 100-240vAC  
Power Consumption: 195 W  
Current Draw: 3 amps

### Control:

Operating Modes: DMX512  
DMX Channels: 1, 2, 5  
DMX Connectors: DMX in/out, Power in/out

### Optical System:

Dimmer 0-100%  
Motorized Zoom: 13° - 41°

### Physical:

Fixture Connection: DMX In/out, Power In/out  
Cooling: Forced, Air convection, Silent fan  
Size: 16.4" x 11.3" x 10.2"  
Weight: 6.6 kgs/14.52 lbs  
Color: Black  
Material: Aluminium

## Optional Accessories for DL-SH33040

### Code

TA-BDRSH33041 Barndoor Performer 2000 - Size: 7.5"

TA-FRAMESH33042 Filter Frame Performer 2000 - Size: 7.5"



# Performer 3000 LED Fresnel, 3200 K

Code TF-SH33043



The Showtec Performer 3000 LED Fresnel is like the complete performer series a true workhorse. It combines the classic looks in a strong housing with LED technology and warm color temperature with a perfect CRI. It is equipped with powerCON in/out and 3-Pin and 5-Pin DMX connectors. For optimal flexibility, the Performer 3000 LED Fresnel has a motorized zoom by DMX which can be adjusted between 15 and 60 degrees. With the built-in dim4 Technology you can select 4 different dim curves to satisfy your personal preference.

### Specifications

#### Output:

Light Source: 32 x 10 W Cree LEDs

Lighting Output: 8,400 Lumens

Lux@2m 15°: 20,497

Peak Intensity: 82,091 cd

Color Rendering: >85Ra

Color Temperature: 3200 K

Refresh rate: 600Hz

#### Electrical:

Power Input: 100-240vAC

Power Consumption: 300 W @FO

Current Draw: 3 amps

#### Control:

Operating Modes: DMX-512

DMX Channels: 1, 2, 5

#### Optical System:

Dimmer: 0-100%

Dim Curve: Dimm4 technology, 4 presets

Electronic Zoom: 15°- 60°

#### Physical:

Power Connectors: Neutrik powerCON True1 in/out

Data Connectors: XLR 3-Pin in/out

Cooling: Silent Fan

Size: 17.9" x 13.1" x 12.7"

Weight: 7.5 kgs/16.5 lbs

Color: Powder coated Black

Material: Aluminum



### Optional Accessories for DL-SH33043

#### Code

TA-BDRSH33044 Barndoor Performer 3000 - Size: 10.3"



# Performer 5000 LED Fresnel, 3000 K - 4000 K

Code TF-SH33050



The Showtec Performer 5000 LED is a tunable white LED Theatre spot with a high output. It can control its color temperature between 3000 and 4000 K creating a maximum Flux of 5,250 Lumens with a CRI of >83Ra. It has built-in motorized zoom which can be controlled between 8 and 40 degrees. All functions are controllable by DMX or standalone by its built-in menu. For full connectivity, the Performer 5000 LED has 3-Pin and 5-Pin DMX on board as well as a Neutrik powerCON Input

## Specifications

### Output:

Light Source: 61 LEDs

Max. Flux: 5,250 Lumens

Peak Intensity: 131000 cd

Color Rendering: >83Ra

Color Temperature: Adjustable 3000 K - 4000 K

Refresh rate: 1200Hz

### Electrical:

Power Input: 100-240vAC

Power Consumption: 200 W

Current Draw: 3 amps

### Control:

Operating Modes: DMX512

DMX Channels: 1, 2, 5, 10

### Optical System:

Dimmer: 0-100%

Beam Angle: 6° - 40°

Motorized Zoom

### Physical:

Fixture Connection: DMX In/out, Power In

Cooling: Forced, Air convection, Silent fan

Size: 14.8" x 14.3" x 14.1"

Weight: 8.8 kgs/19.36 lbs

Color: Black

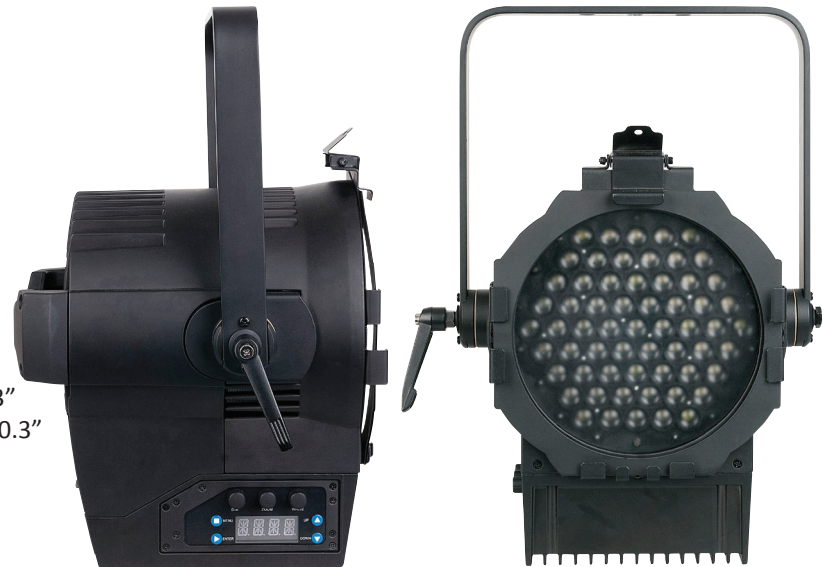
Material: Aluminium

## Optional Accessories for DL-SH33050

### Code

TA-BDRSH33051 Barndoor Performer 5000 - Size: 10.3"

TA-FRAMESH33052 Filter Frame Performer 5000 - Size: 10.3"



# Performer Profile 600 LED DDT

Code TH-SH33063



- COB LED LightsourceD
- 3-Pin & 5-Pin DMX control
- Color temperature 3200 K

The Showtec Profile 600 DDT is engineered as the only real replacement for the tungsten 750 W Lamp. Designed as an extremely versatile and rugged piece of lighting equipment. The Profile 600 is ideal for both theatre and rental applications. The body fits all major brand lenses which eliminate the need of exchanging existing lenses. Another advantage of this profile spot is the integrated Digital Dimming Technology (DDT), which allows you to dim the COB LED with a traditional dimmer. In short: you get all benefits of LED technology without having to change your complete infrastructure. The Performer Profile 600 DDT is completely controllable via DMX and only consumes 270 W at full power.

## Specifications

Output:

Light Source: 1 x 250 W LEDs

Refresh Rate: 1200Hz

Max. Flux: 6,522 Lumens

Peak Intensity: 71,900 cd

Color Rendering: >890Ra

Color Temperature: 3200 K

Electrical:

Power Input: 100-240vAC

Max. Power: 230 W

Control:

Dimmer: 0-100%

Dim Curve: Dimm4 technology, 4 presets

Beam Angle: 19°/26°/36°/50° (Optional)

Physical:

Fixture Connection: DMX In/Out, Power In/Out

Cooling: Forced, Air convection, Silent Fan

Size: 28.35" x 14.96" x 13.4"

Weight: 9.6 kgs/21.12 lbs

Color: Black

Material: Aluminium



Optional lenses for DL-SH33063, the unit requires one, sold separately:

Code TA-SH33072 Performer Profile Lens 19 degree

Code TA-SH33075 Performer Profile Lens 26 degree

Code TA-SH33073 Performer Profile Lens 36 degree

Code TA-SH33074 Performer Profile Lens 50 degree



Optional Zoom lenses for DL-SH33063 sold separately:

Code TA-SH33070 Performer Profile Zoom Lens 15-30 degrees

Code TA-SH33071 Performer Profile Zoom Lens 26 degree



## Performer Profile Mini Black, body without lens

Code TH-SH33081



- 10 W LED light source
- Directly Triac Dimming
- 0-10 V
- Color temperature 3200 K

With the Performer Profile Mini we bring you the perfect complement in function and form to our Performer Profile 600 in a tiny fixture that's just one-third the size of the Profile 600. Equipped with a 10 W warm white LED, Gobo holder and a four-blade shutter system, it has an extremely clear cutting edge, sharp gobo images and also can create a crystal bright projection effect. The Performer Profile Mini is available in three field angles: 19°, 26° and 36°. Versatile for small to medium applications such as bars, pubs, museums, restaurants, and other small scale installations.

### Specifications

#### Output:

Light source: 1 x 10 W Warm White LEDs

Max. Flux: 380 Lumen (19°)

Peak Intensity: 6,608 cd (19°)

Color Rendering: >85Ra

Color Temperature: 3200 K

#### Electrical:

Power Input: 120-240vAC

Max. Power: 15 W

Current Draw: 1 amp

#### Control:

Dimmer: 0-10 V Silicon controlled Rectifier  
directly on triac

Beam angle: 19°/26°/36° (Optional)

#### Physical:

Mount Features: Portable/Track-mount

Cooling: Forced, Air convection

Size: 11.42" x 4.25" x 9.29"

Weight: 1.6 kgs/3.52 lbs

Color: Black/White

Material: Aluminium



Optional lenses for DL-SH33081, unit requires one, sold separately:

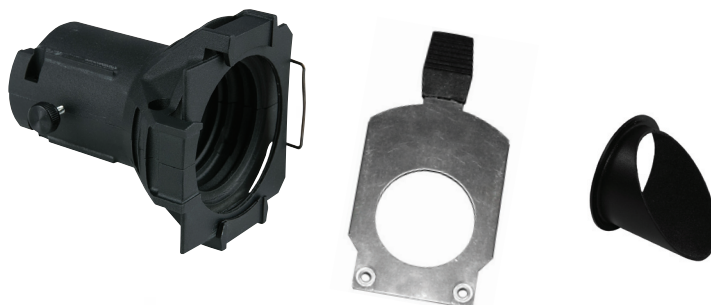
Code TA-SH33082 Performer Profile Mini Lens 19 degree

Code TA-SH33083 Performer Profile Mini Lens 26 degree

Code TA-SH33084 Performer Profile Mini Lens 36 degree

Code GH-SH33086 Performer Profile Mini Gobo Holder

Code: TA-SH33085 Performer Profile Half Hat Shield





- Extensive zoom range
- Solid aluminium housing
- RGB backlight glare effect

The Showtec NanoQ 12 Q4 offers an extensive wide zoom range from 6 degree up to 60 degree in combinations with full RGBW color control and a vivid back light effect. It has a compact and sturdy housing which is designed to meet the demands of the most extreme tours. The fixture has a double bracket with quick-lock connector which makes it possible to use the fixture in any position without the need of any tools. (Dedicated bracket option available). It has full connectivity with 3-Pin and 5-Pin XLR connectors as well as Blue and White Power connectors. A bright LCD displays makes it easy to control all settings or select the right pre-programed color either program.

### Specifications

#### Output:

Light Source: 12 x 10 W RGBW LEDs

Backlight System: 21 x RGB 5050 SMD

Output@2 m: 14300 lux (5°)

#### Electrical:

Power Input: 100-240vAC 50/60Hz

Power Consumption: 130 W

#### Control:

Operating Modes: Auto/ Built-in Programs, Master/Slave, DMX

DMX channels: 6, 10, 14

#### Optical System:

Dimmer: 0-100%

Strobe: 0-20Hz

Beam Angle: 5°-60°

#### Physical:

Power Connectors: Pro Power connector

Data Connectors: XLR 3-Pin & 5-Ppin

Cooling: Forced

Operation Temperature: -10 – 40°C / 14 – 104°F

Insulation rating: IP20

Size: 8.0315" x 10.08" x 11.3"

Weight: 4.1 kgs/9.02 lbs

Color: Powder coated Black

Material: Aluminium



# EventLITE 177IR

Code DB-SH44010



- Compact and lightweight
- Long battery life
- Built-in battery charger and protection
- Smooth color mixing

The Showtec EventLITE 177IR is a compact, lightweight and powerful mobile spot. Special led-matrix and very precise electronics ensures a smooth color mixing. The double bracket and special designed housing makes it easy to use this EventLITE as a uplighter ore as a normal spot. Connectors on both sides are placed to make data linking as easy as possible. Built-in programs, master/slave mode and pre-programed colors eliminate the need of complicated controllers and will contribute in faster build up times for your events.

## Specifications

### Output:

Light Source: 177 x 10 mm (60 x Red, 60 x Green, 57 x Blue) LEDs

Lux @2 m: 700

Color Range: 16.7 million additive RGB colors

Beam Angle: 30°

### Electrical:

Power Input: 100-240vAC 50/60Hz

Max. Power: 30 W

LCD display

### Control:

Operation Modes: Built-in Programs, Auto Running, DMX, Master/Slave, Sound Active, and Static Colors

DMX channels: 2, 3, 5

### Battery:

Battery Type: 8 Ah

Battery Capacity (non-stop): 6 hrs 6 hrs non-stop with all LEDs on

Battery Charging Cycle: 10 hrs (LED blackout when charging)

### Physical:

Fixture Connection: Data in/out, Power in/out

Cooling: Convection

Insulation Rating: IP20

Operation Temperature: -10 – 40°C / 14 – 104°F

Size: 11.4" x 4.13386" x 11.8"

Weight: 4.36 kgs/9.6 lbs

Color: Black

Material: ABS plastic

## Accessories

UR-5 Universal IR Remote

Code CT-SH44002



# Spectral M950

Code DL-SH43630 Tour Spectral M950 SW

DL-SH43631 Tour Spectral M950 Q4

DL-SH43632 IP65 Spectral M950 Q4



- CW WW Amber Color mixing
- RGBA Color Mixing
- Preprogrammed colors
- OLED Display
- 3-Pin & 5-Pin XLR (Tour)
- powerCON TRUE1 & 3-Pin (IP65)



Due to the fast and ever changing technology in LED, Showtec updated the Spectral series with the M850 and M950. On board are very powerfull 4-in-1 RGBA LED with specially chosen color wavelengths resulting in a true color mixing as close to natural as possible. They offer a clear OLED display, 3-and 5 pin XLR connectors, Pro Power in-and outputs on the Tour version, dedicated IP-65 power connectors on the IP version, quick-lock connector for fast connecting a clamp and Pre-programmed LEE colors which are accessible in stand-alone modus and by DMX. The compact and rugged die cast aluminium housing is re-designed to ensure a better heat-dissipation together with a re-designed stronger bracket.



## Specifications

Output:

DL-SH43630 Light Source: 18 x 8 W 3-in-1 CW/WW/Amber LEDs

DL-SH43631 Light Source: 18 x 8 W 4-in-1 RGBA LEDs

DL-SH43632 Light Source: 18 x 8 W 4-in-1 RGBA LEDs

Refresh Rate: 400 Hz

Dimmer: 0-100%

Strobe: 0-20Hz

Beam Angle: 25°

Electrical:

Power Input: 100-240vAC 50/60Hz

Power Consumption: 160 W max @FO

Control:

Operating Modes: DMX512, Auto, Manual

OLED Display

Physical:

Fixture Connection: Power in + Data in/out

Cooling: Convection

DL-SH43630 Insulation Rating: IP20 (Tour)

DL-SH43631 Insulation Rating: IP20 (Tour)

DL-SH43632 Insulation Rating: IP65 (IP-65)

Approvals: ETL

Size: 11.73" x 8.7" x 12.24"

Weight: 5.5 kgs/12.1 lbs

Color: Black

Material: Aluminium

Lens Plate: Tempered glass



DL-SH43632 IP65



DL-SH43630 Tour

DL-SH43631 Tour

Optional Accessories for DL-SH43630, DL-SH43631, DL-SH43632

Code

TA-BDRSH43636 Barndoor Spectral M950 - Size: 10.3"

TA-FRAMESH43635 Filter Frame Spectral M950 - Size: 10.3"



# Spectral PC 600Z IP

Code DL-SH43551



- Wide zoom range
- RGBW color mixing
- Fast zoom
- IP65 rated

The Spectral PC600Z IP is a hybrid version of a PC light and a parcan.

It offers many features of the Spectral series combined with superior optics creating a stunning PC projection combined with an impressive zoom range of 4.5° to 45°.

The Spectral PC600Z IP has a 60 W RGBW COB chip which projects an even and fully homogenized beam. It has a full IP65 rating ensuring reliable use outdoor in the most severe weather conditions.

## Specifications

Output:

Light Source: 1 x 60 W RGBW LED

Light Output: (4.5°): 19200 Lux @ 2 meter, (45°): 560 Lux @ 2 meter

Refresh Rate: 12Khz

Max. Ambient Temperature: 40°C / 104°F

Dimmer: 0-100%

Strobe: 0-25Hz

Beam Angle: 4.5° to 45°

Field Angle: 8° to 55°

Electrical:

Power Input: 90-2240vAC

Power Consumption: 85 W

Current Draw: 4A

Control:

Operating Modes: DMX512

Control Personality: HSiC, SSP, TOUR, TR16, STD.Y

DMX Channels: 9, 12, 17

Display for easy set up

Selectable PWM: 600 Hz, 1200 Hz, 2000 Hz, 2400 Hz, 6000 Hz, 25000 Hz

Physical:

Fixture Connection: IP65 3-Pin XLR power connector

Cooling: Convection

Approvals: CE

Size: 9.53" x 9.53" x 13.6"

Weight: 4.5 kgs/11.44 lbs

Color: Black

Material: Aluminium



# Helios 200 COB Q4

Code DL-SH43715



- COB RGBW LED
- Die cast housing
- 3-Pin & 5-Pin XLR connections
- 60° Beam angle

The Showtec Helios 200 COB is a die cast spot with RGBW color mixing. The COB technology with RGBW colors offers an excellent color mix to make both high saturated and pastel colors. The 16 character display with a user friendly menu structure makes it convenient to apply your desired settings. 3-Pin and 5-Pin XLR connections, blue and white power in- and output together with the die cast housing and double bracket makes the Helios 200 rental proof.

## Specifications

Output:

Light Source: 1 x 60 W RGBW LED

Light Output: Lux @2m: 2036

Refresh Rate: 12Khz

Max. Ambient Temperature: 40°C / 104°F

Dimmer: 0-100%

Strobe: 0-20Hz

Beam Angle: 60°

Electrical:

Power Input: 100-240vAC

Power Consumption: 200 W

Current Draw: 1700m

Control:

Operating Modes: DMX512

DMX Channels: 4, 6, 8

Display for easy set up

Physical:

Fixture Connection: Power in + Data in/out

Cooling: Fan

Approvals: CE

Size: 10.6" x 8.03" x 17.2"

Weight: 5.2 kgs/11.44 lbs

Color: Black

Material: Aluminium



- Compact Housing
- Wireless DMX
- IP54 Rating
- LED

The Helix 4000 Q4 is a powerful panel fixture with an IP54 insulation rating. It has an extreme high LED output and suitable for illumination of large areas indoor as well as temporary outdoor applications. The Helix 4000 Q4 is equipped with 40 pieces RGBW LEDs offering rich and vivid colors. Wireless DMX (Wireless Solutions) comes standard and has quick locks for fast rigging and mounting.

### Specifications

#### Output:

Light Source: 40 x RGBW 4-in-1 10W LEDs  
Light Output: Output @2m: 54000 lux  
Refresh Rate: 3.0 KHz

Dimmer: 0-100%  
Strobe: 0-20Hz  
Beam Angle: 45°

#### Electrical:

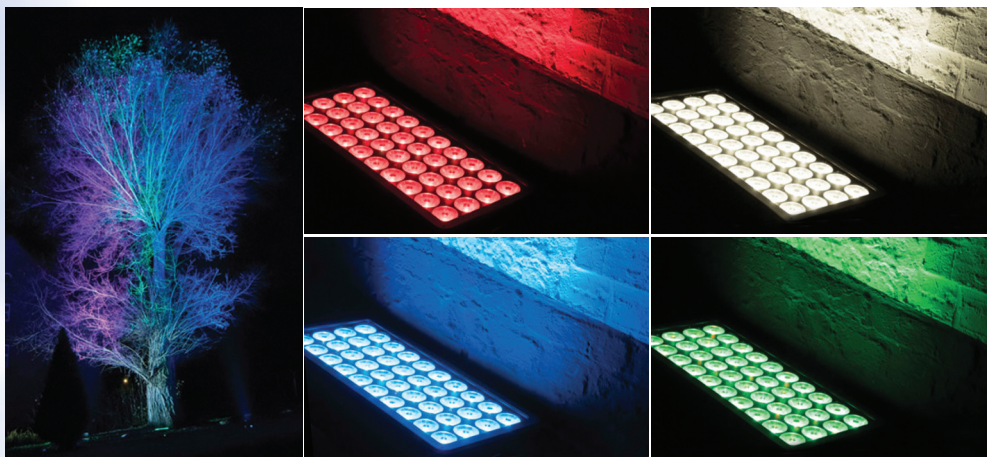
Power Input: 100-240vAC  
Power Consumption: 390 W  
Current Draw: 1700 m

#### Control:

Operating Modes: Auto/ build-in programs, Master/slave, DMX  
DMX Channels: 4, 6, 8  
Display for easy set up

#### Physical:

Power Connectors: powerCON True1  
Data Connectors: XLR-HD 3-Pin  
Cooling: Forced-air  
Insulation Rating: IP54  
Operation temperature: -10~40°C  
Size: 20.95" x 12.6" x 4.84"  
Weight: 9.5 kgs/20.24 lbs  
Color: Black  
Material: Aluminium



# Phantom 300 LED Matrix

Code DM-SH40060



- 25 x 10 W RGBW LEDs
- DMX & Artnet
- Pixel control
- Continuous pan & tilt

The Showtec Phantom 300 LED Matrix, is a 5x5 matrix moving head with 25 pcs 10W RGBW LEDs and 15° optics. Even though it has a 5x5 matrix it is a compact fixture with a 270x270mm head and a 360x230mm base. It has a 12, 20 and a 120 channel personality to serve the basic users as well as the advanced users that like to have full pixel control. In all personalities preset colors, color programs, built-in animations, gobos and characters are selectable by DMX. Because of the 120 channel personality it is also equipped with Artnet. It has IFS Technology which helps the user to combine other IFS fixtures with similar functions to get synchronized. This makes it easy to program similar colors, programs, strobes, and speed.

## Specifications

### Output:

Light Source: 40 x RGBW 4-in-1 10W LEDs

Light Output: Lux @ 2m: 44950 lux

Refresh Rate: 3.0 KHz

Dimmer: 0-100%

Dimmer Curves: Linear, Square, I-Square, S curve

Strobe: 0-20Hz

Beam Angle: 15°

Max. Ambient Temperature: 40°

### Electrical:

Power Input: 100-240vAC

Power Consumption: 700 W

### Control:

Operating Modes: DMX, Auto, Sound, Master/Slave, Artnet

DMX Channels: 12, 20, 120

Display including gravity sensor

### Movement:

Pan/Tilt: 540° / 270° & Continuous

Pan/Tilt resolution: 16-bit

Special: Pan/ Tilt reverse & Black out by DMX

### Physical:

Power Connectors: Pro power In/Out

Data Connectors: XLR 3-Pin & RJ-45

Approvals: CE

Size: 14.8" x 9.41" x 18.9"

Weight: 15 kgs/28.6 lbs

Color: Black

Material: Metal & Flame Retardant material



# LED Par 64 Aircraft

Code DL-SH30743



- 18x 3W WW LEDs
- powerCON In/Out
- Double Bracket
- Shooting range 100 m

The LED Par 64 Aircraft brings an old school effect back to life with all advantaged of the new technologies. Due to the 3° lenses and powerful 18 x 3 W LEDs it creates a very narrow warm white beam just like the aircrafts we used to know. Because of LED and DMX technology there is no need for heavy dimmer racks and difficult cabling. Another advantage is that each aircraft can be programmed separately to create even more dynamic effects. It has a solid housing, a heavy duty double bracket and powerCON In/Out to fulfill all high demanding rental needs.

## Specifications

Output:

Light Source: 18 x 3 W WW LEDs

Distance: >100m

Refresh Rate: 400Hz

Dimmer: 0-100%

Strobe: 0-20Hz

Beam Angle: 3°

Electrical:

Power Input: 100-240vAC

Power Consumption: 65 W @FO

Control:

Operating Modes: DMX512, Auto, Manual

DMX Channels: 1, 2, 3

2 x 8 Character Display

Physical:

Power Connectors: powerCON In/Out XLR 3-Pin

Cooling: Convection

Insulation Rating: IP20

Size: 20.3" x 10.2" x 10.2"

Weight: 3.5 kgs/7.7 lbs

Color: Black

Material: Aluminium





- 10x 75 W GU10
- 16 built-in patterns
- Manual dimmer
- Neutrik powerCON in/out
- Mounting/Floor brackets

The Showtec Sunstrip Active is the successor of the already popular Sunstrip I and II. However, this Sunstrip is fully active and has a built-in dimmerpack. When you select different DMX modes: 1 channel, 2 channel, 5 channel and 10 channel, the unit becomes more versatile for many applications. For stand-alone applications, the Sunstrip Active is equipped with 16 built-in patterns as well as a manual dimmer. With its Neutrik powerCON in/out, the Sunstrip is suitable for the most demanding users on the road. For easy mounting, the Sunstrip Active is equipped with two mounting Wall/Floor brackets and several M10 nuts, in order to put your clamp in any desired position.

**Specifications**

Output:

Light Source: 10 x Showtec 75 W GU10 lamps

Electrical:

Power Input: 120vAC 50/60 Hz (Available in 240vAC)

Power Consumption: 800 W

Current Draw: 3.5 amps

Fuse: 6.3A

Control:

Display for easy Set Up

Operating Modes: 16 Built-in Programs, Sound Active,  
Master/Slave, DMX

DMX Channels: 1, 2, 5, 10

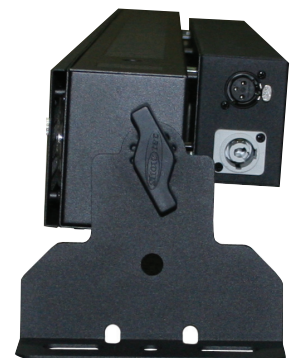
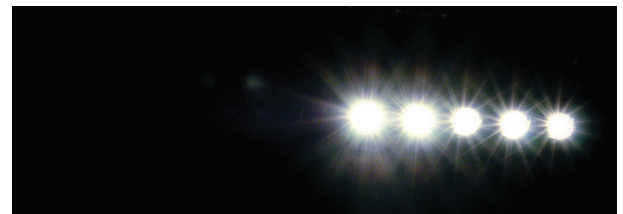
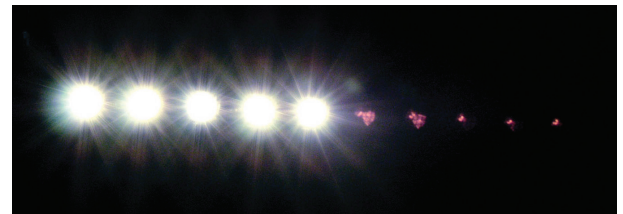
Physical:

Power Connector: Neutrik Powercon in/out

Data Connector: Neutrik XLR In/Out (3-Pin)

Size: 39.4" x 5.12" x 3.03"

Weight: 5.3 kgs/11.66 lbs



## UV LED Bar 100 cm

Code DL-SH80328

---



- Plug & Play
- 18 x 3 W UV LEDs
- Retro Blacklight effect
- Low profile

The Showtec UV LED Bars create a blacklight effect with LEDs. They are available in the standard 100 cm (3.3 ft) and 50 cm (1.64 ft) lengths. The UV LED bars are high power, less fragile than the conventional tubes and have a long life time.

### Specifications

Output:

Light Source: 18 x 3 W UV LEDs

Beam Angle: 120 Degrees

Electrical:

Power Input: 100-240vAC 47/63Hz

Power Consumption: 60 W max

Current Draw: 680mA

Physical:

Size: 38.8" x 2.4" x 4.53"

Weight: 2.30 kgs/5.06 lbs



## UV LED Bar 50 cm

Code DL-SH80327

---



- Plug & Play
- 9 x 3 W UV LEDs
- Retro Blacklight effect

The Showtec UV LED Bars create a blacklight effect with LEDs. They are available in the standard 100 cm (3.3 ft) and 50 cm (1.64 ft) lengths. The UV LED bars are high power, less fragile than the conventional tubes and have a long life time.

### Specifications

Output:

Light Source: 9 x 3 W UV LEDs

Beam Angle: 120 Degrees

Electrical:

Power Input: 100-240vAC 47/63Hz

Power Consumption: 30 W max

Current Draw: 680mA

Physical:

Size: 19.7" x 2.4" x 4.53"

Weight: 1.34 kgs/5.06 lbs



# Hydrogen DMX MKII

Code EL-SH43151



- 20 W LEDs Red, Green, Blue, Purple, Yellow and White
- 4 DMX channels
- Multi-voltage

The Showtec Hydrogen DMX is the bigger brother of the Hydrogen. It has a DMX interface and a stronger light output due to the 20W LED source. Both colors and water project on can be fixed or scrolling. If the colors are set to scrolling it makes the color change Red, Green, Blue, Purple, Yellow and White.

## Specifications

Output:

Light Source: 1 x 20 W LEDs

Beam angle: +/- 30 Degrees

Electrical:

Power Input: 100-230vAC 50/60Hz

Power Consumption: 35 W

Control:

Operating Modes: Auto, Custom, Master/Slave, DMX

DMX channels: 4

4-Digit LED display

Physical:

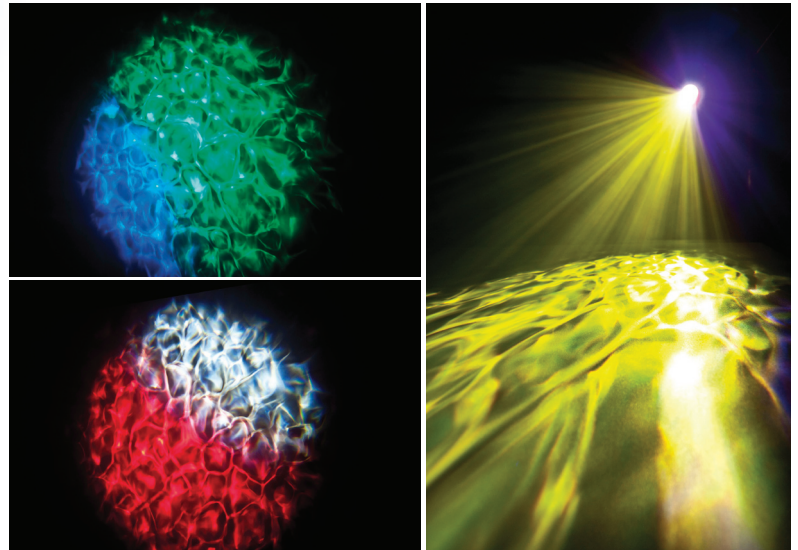
Power Connector: IEC In/Out

Data Connector: XLR 3-Pin In/Out

Size: 10.51" x 9.1" x 4.8" (excl. bracket)

Weight: 3.5 kgs/7.7 lbs

Color: Black



- Intelligent Music Control
- 10 W RGBW 4 in 1 LEDs
- IEC In- and output
- Auto and sound programs selectable by DMX

The Showtec Cyclone 4 is a compact dynamic light effect with a big coverage on the dance floor. It has a 4-in-1 10 W RGBW LED light source and creates laser-sharp beams by 8 optimized lenses. The Cyclone 4 is equipped with IMC, Intelligent Music Control, this is a special sound-to-light module that reacts to your music like a real light-jockey. If you are playing easy-listening music, nice slow programs will be selected. If you are playing party-music the IMC will select the uplifting programs and different strobe patterns to entertain your audience. The Cyclone also has built-in programs and if you like to control it yourself you can use the DMX mode. DMX control will give you full control over Operation Mode, Colors, Strobe and Motor speed. It is very user-friendly due to the menu with 4-digit display. DMX and IEC in/out with the Master/Slave mode will make this unit easily linkable.

**Specifications**

Output:

Light Source: 1 x 10 W 4-in-1 RGBW LEDs

Beam Angle: +/- 30 Degrees

Electrical:

Power Input: 100-230vAC 50/60Hz

Power Consumption: 36 W

Control:

Operating Modes: Auto, Custom, Master/Slave, DMX

DMX channels: 4

4-Digit LED display

Physical:

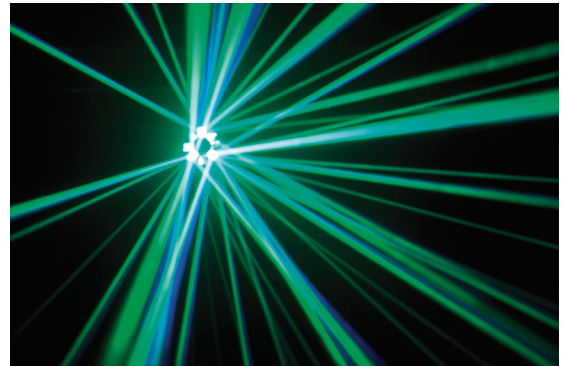
Power Connector: IEC In/Out

Data Connector: XLR 3-Pin In/Out

Size: 10.63" x 9.8" x 7.9" (excl. bracket)

Weight: 3.6 kgs/7.92 lbs

Color: Black



- 42 LED matrix patterns
- 4 in 1 Light effect
- RGBWA colors
- Wide beam angle

The Showtec Dynamic LED DMX 4-Flower offers 256 powerful 5 mm LEDs, distributed on 4 lenses. Use a fog machine "Dynamic LED" shows through razor-sharp with color saturated rays. The 256 LEDs are divided in 5 colors: red, green, blue, yellow and white. Control takes place either via the sound-to-light mode (built-in, microphone) or automatic mode. The laser is particularly varied with 42 programs stored in the fixture. The Dynamic LED can be controlled via DMX (2 or 3 channels). The on-board LCD menu with 4-key operation, makes setting up functions easy. The Dynamic LED also has a master/slave mode.

**Specifications**

Output:

Light Source: 256 x 17 W LEDs

Electrical:

Power Input: 90-250vAC 50/60Hz

Power Consumption: 20 W

Control:

Operating Modes: Master/Slave, DMX

DMX channels: 2, 3

Music mode

4-Digit LED display

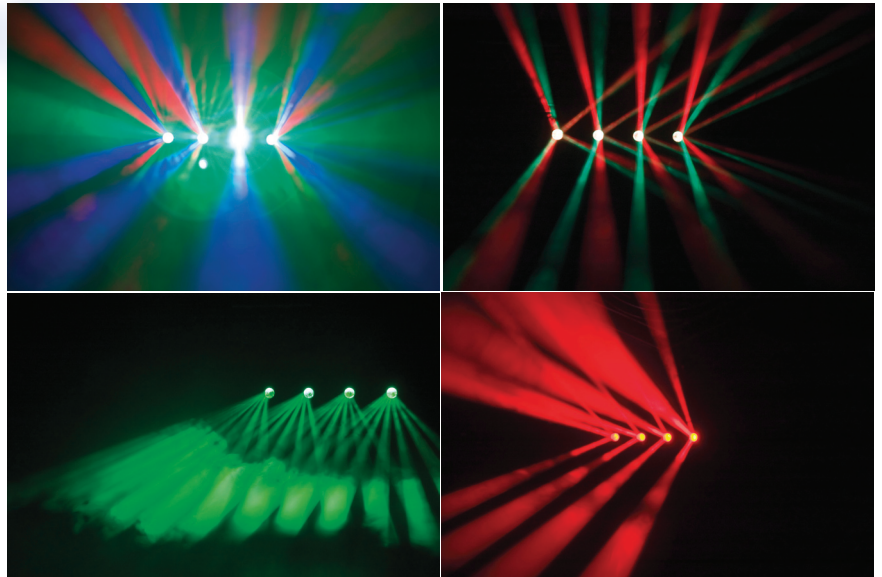
Physical:

Data Connector: XLR 3-Pin In/Out

Size: 39" x 8.3" x 6.7" (excl. bracket)

Weight: 5.7 kgs/12.54 lbs

Color: Black



# Showmaster 48 MKII Controller

Code CT-SH50831



- 48 Multifunctional channel faders
- Up to 96 Scenes / Chases with max 999 steps
- Detachable frame
- Midi In & Out
- Remote black out/full on possibility

The Showmaster 48 MKII is the bigger brother of the “normal” Showmaster: with 48 channels instead of 24! The Showmaster 48 MKII is a 2-banks 24 fader, 1-bank 48 fader mixing console. The Showmaster 48 MKII controls DMX and has also the capability to be used with MIDI protocol to allow real-time programs. The Showmaster 48 MKII controls 2x24 channels (single bank) or 48 channels. The Showmaster 48 MKII can program 96 scenes or chases of 999 steps or a loop with a total of 23976 steps. Programs can be run automatically or by external or internal music input. It is also possible to control your light show by the built-in MIDI-interface to allow a real-time live-show to your music. Includes side panels and 1 power adapter.

## Specifications

- 48 channels
- 96 scenes or 96 chase programs with 999 steps
- program loop with a total of 23,976 steps
- 2 independent crossfaders
- 3-digit LED display
- MIDI IN/OUT
- Audio IN
- Sound-controlled mode
- Speed-controlled mode
- Scene-mix and Scene/Chase-Loop
- Chase reverse fader, Tap-Sync and Step-Mode
- DMX invertible
- MIDI IN, MIDI OUT, MIDI Thru
- Master fader control
- Power Input: 100-240vAC 50/60hz
- Power Supply: DC 12-20V 500mA
- Size: 28" x 10.5" x 3.5" (LxWxH) 19" x 5HE
- Weight: 6.2 kgs/13.64 lbs
- Color: Gray



# LED Operator 6 Controller

Code CT-SH50728



- Up to 6 zones
- RGBWA-UV control
- Color preset buttons
- Easy to use

The LED Operator 6 is an universal, compact but powerful controller which is capable of controlling up to 6 channels per fixture. Therefore the LED Operator 6 is suitable to control any LED fixture with 6 colors LED (RGBWA-UV) in 6 different groups. The LED Operator 6 allows you to control effects by simultaneously operating each fixture in different playback modes, with variable fade times. The LED Operator 6 offers unlimited flexibility with numerous playback options that include RGBWA-UV, automatic and sound-active modes. Increase control with adjustable audio sensitivity, strobe and black-out effects.

## Specifications

- Fixtures: 6
- Fixture channels: 6
- DMX Channels: 36
- Color Presets: 18
- Chases: 18
- DMX Connector: 3-Pin XLR
- Power Input: 12vDC, 500mA
- Size: 15.5" x 5.51" x 1.9" (LxWxH)
- Weight: 1.8 kgs/3.96 lbs

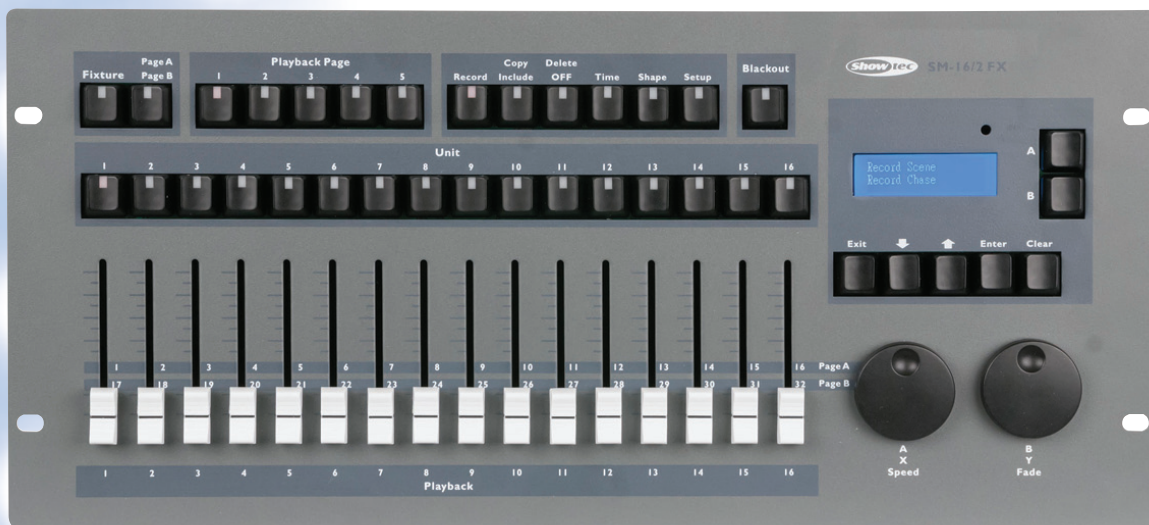


- Intelligent light DMX controller
- Control 16 fixtures up to 32 channels each
- Patchable channels for each fixture
- ready-to-use Shape Engine
- show backup on USB

The Showtec SM-16/2 FX. 32 Channel Lighting Desk with ready-to-use Shape Engine. Control 16 fixtures up to 32 channels each with patchable channels for each fixture. Show backup on USB.

**Specifications**

- 32 channels
- 80 scenes (5 banks), 80 chase programs (5 banks) with 100 steps
- Run Mode: Auto, Manual
- Patch Mode: Each fixture free assignable channels
- DMX Channels: DMX-512 standard
- DMX Connectors: 3-Pin and 5-Pin XLR female
- Power Input: 100-240vAC 50/60hz
- Size: 18.98" x 8.66" x 2.95" (LxWxH)
- Weight: 3.7 kgs/8.14 lbs
- Color: Gray





# LED Commander PRO Controller

Code CT-SH50725



- 8 Individual programmable channel displays
- Control 8 LED fixtures up to 8 channels each
- Free patchable channels
- Memory for 16 scenes and 16 chases
- 2 Aux channels to control foggers and strobes

The Showtec LED Commander Pro is the successor of the LED commander. The upgrade is simple but unique and very useful. The LED commander Pro has displays above each channel fader that shows the actual channel function. Because there are many different led fixtures and all with other channel settings it is hard to remember which channel has which function. The displays above the channels are fully programmable by the user. Now you can program your channel name in these displays which will be very useful during live operation. The displays show the programmed channel names and the channel value. Besides this unique function the LED commander pro also has all the benefits of the already successful LED commander. It can control 8 different group of fixtures simultaneously. With the 8 patchable channel faders you can control all functions of the LED par in your desired order. It has 2 auxiliary channels which are very useful for foggers or strobes. Furthermore the unit has 16 programmable scenes and 16 programmable chases.

## Specifications

- Fixtures: 8 + 2 Aux channels
- Scenes: 16
- Chases: 16
- Run Mode: Auto, Music, Manual
- DMX-512: 66 Channels
- DMX Connector: 3-Pin Female XLR
- USB: 5vDC for mini-light
- Audio Input: RCA, 100mv - 1Vpp
- MIDI: In, Out, Thru
- MIDI connector: 5-Pin DIN
- Power Connector: Adapter (included)
- Power Consumption: 20 W
- Power Input: 9-12VDC - 1000mA
- Size: 19" x 6.14" x 3" (LxWxH)
- Weight: 3.1 kgs/6.82 lbs



# Creator Compact DMX Controller

Code CT-SH50729



- Control 32 fixtures up to 24 channels each (768 channels)
- 60 Scenes/Chases
- Each chase can store 120 steps
- Easy to use Shape generator
- Intelligent jog wheels

The Creator Compact can control up to 32 fixtures. This is the most compact moving light controller in its family. It is easy to setup and operate due to an innovating and simple menu. The USB makes it possible to store your settings and shows. The Creator Compact comes with built-in shape effects of pan/tilt circle, RGB rainbow, beam dimming waves, etc. 10 scenes and 5 built-in shapes can be output simultaneously. Faders can be used to output scenes and adjust the intensity of the dimmer channels in the scenes

## Specifications

- Fixtures: 32
- Fixture channels: 6
- Channels for each fixture: 24
- DMX Channels: 36
- Color Presets: 18
- Chases: 60
- Chase to run simultaneously: 10
- Chase step: 120
- Time control of scenes Fade in/out, LTP slope
- Shapes for each scene 5
- Shape generator Shapes of Dimmer, Pan/Tilt, RGB, CMY, Color, Gobo, Iris and Focus
- Shapes to run simultaneously 5
- USB Memory FAT32 supported for storing settings and shows.
- Size: 19.02" x 8.92" x 3.42"(LxWxH)
- Display language: EN/FR/DE
- Weight: 4.6 kgs/10.12 lbs
- Flightcase: optional



## Flightcase 19" x 3U for Scanmaster Series

Code RO-SHD7403



### Specifications

- Suitable for Showtec Scanmaster 1, Scanmaster 2 MKII, Light Jockey 24, Fademaster 16, Lite 8 Pro & SM-8/2
- 3U 19" Sloped Rackmount Rail
- Space at rear for DMX and audio connections
- Power Supply Storage Compartment
- Size: 5.51" x 2.28" x 9.67" (HxWxD)
- Weight: 4.6 kgs/10.12 lbs



## Flightcase 19" x 7U for Scanmaster Series

Code RO-SHD7401



### Specifications

- 7U 19" Sloped Rackmount Rail
- Space at rear for DMX and audio connections
- Power Supply Storage Compartment
- Size: 20.31" x 15.04" x 5.8" (HxWxD)
- Weight: 5.2 kgs/11.44 lbs



