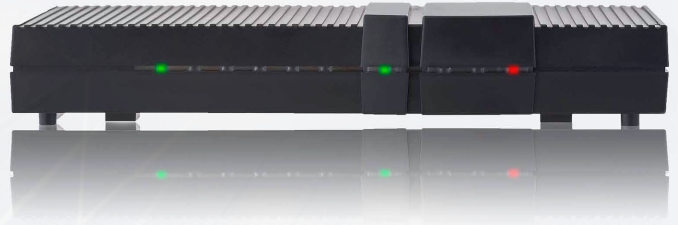


# VoIPBox BRI 4



## —○ Datasheet

### You will be glad to know it

The VoIPBox BRI keeps users always on the safe side: The Gateway is fully compatible with existing ISDN systems offering 100% interoperability and allowing its users to continue working with their existing ISDN equipment in order to protect their investment.

In addition the Gateway can act as a SIP registrar and location server, enabling SIP devices to register on the box and maintain service even when the IP network is not available.

A wealth of management and provisioning tools are at disposal to meet the requirements of multiple customers' profiles. In the event the network operator and users fully transition to VoIP, the TELES Gateway can remain operable as demarcation point (E-SBC) in the IP network.

#### BENEFITS AT A GLANCE

- VoIP Gateway with 4 BRI's
- Highly precise 5ppm clock
- Smooth migration from ISDN to VoIP
- All ISDN services, full ISDN quality
- Demarcation point for customer premises
- Auto provisioning

VoIPBox BRI 4	
<b>Scalability</b>	
Concurrent calls	8
BRI	4
<b>System Management</b>	
Remote access via IP or ISDN, Network Management System, TR69, Web configuration interface, Alarm Management (SNMP), Call Detail Records (CDR)	
<b>Protocols</b>	
WAN Ethernet	⊙
VLAN	⊙
DSS1 (Q.931, national variants), Q.SIG-BC, NT/TE, Point-to-Point & Point-to-Multipoint	⊙
ISDN Supplementary Services Interworking	⊙
SIP (RFC 3261)	⊙
H.323 (v4)	⊙
G.711, G.729, G.168	⊙
Fax T.38 with G.711 fallback	⊙
ISDN data via <i>clear channel</i> (RFC 4040)	⊙
<b>Call Routing</b>	
Number & header manipulation	⊙
Multilevel alternative routing; time dependent	⊙
Support of ENUM & DB routing	⊙
Support of multiple Gatekeepers (H.225) & registrars (SIP)	⊙
Overlap/en-bloc conversion	⊙
Black/white list	⊙
QoS routing	⊙
Codec translation/transrating	⊙

## Advanced Features

Integrated SIP registrar & location server	⊙
Integrated callback / two-stage dialing server	⊙
RTP multiplex bandwidth reduction	⊙
Integrated enterprise session border controller feature set	⊙
AoC generation (AOC-D, AOC-E)	⊙
Dynamic PSTN fallback	⊙
RADIUS	⊙

## EXTERNAL INTERFACES

Ethernet	2 x 10/100/1000 Base-T RJ45
ISDN	4 BRI - 1st BRI: TE or NT Power Feeding on 2 BRI Highly precise 5ppm clock
Power supply	12 VDC, 3A

## PHYSICAL PARAMETERS

Size (W x H x D)	280 mm x 38 mm x 138 mm
Material	ABS
Mounting	Wall

## ENVIRONMENTAL CONDITIONS

Temperature	+5 C to +40 C
Humidity	5 % to 80 % (non-condensing)

## APPROVALS

EMC, Safety, CE

TELES AG Informationstechnologien  
Ernst-Reuter-Platz 8  
10587 Berlin  
Germany

T +49 (30) 399 28 00  
F +49 (30) 399 28 01  
contact@teles.com

[www.teles.com](http://www.teles.com)

**TELES**  
AG  
Informationstechnologien