

tevelec

accessories



catalogue

Tevelec Limited - Serving the wire and cable industry since 1977.

With experienced and knowledgeable staff, the **Tevelec** purpose is to be of value to every customer we service with quality products delivered on a timely basis. Most of the products we inventory carry both UL and CSA approvals as well as being compliant with the RoHS initiatives. More specifically, **Tevelec** provides wire and cable solutions for O.E.M., Security, Telecommunications, Construction, Voice and Data Markets. The following is a partial list of our products and services. For items not listed, please contact our customer service desk.

- Audio Communication
- Central Office and Switchboard Cable
- Connectors
- Control and Instrumentation Cable
- Custom Designed and Manufactured Cables
- Custom Manufactured Harnesses and Cable Assemblies
- Data-UTP/STP Category 3, 5E, 6
- Direct Burial & Aerial Cable
- DLO Diesel Locomotive Cable
- Energy Management
- Fiber/Copper Patch Cables
- Fiber Optic Cable
- Fire and Burglar Alarm Cables, Security, Access Control, CCTV Cables
- Frame to Station Connectivity
- High Temperature Wire and Cable
- High Voltage Lead Wire, Ignition (GTO-15)
- Hook-up and Lead Wire
- Medium and High Voltage Power
- MIL-SPEC
- Patch Panels
- Plenum Cables FT-4, FT-6, CMP
- Portable Cords & Welding Cables
- Telephone and Intercom
- Thermostat (LVT)
- Tools & Test Equipment
- Wall Plates

value added services

Cut and Strip, Striping, Dyeing, Twisting, Armouring, Bundling and Sourcing of Uncommon or Specialty Wire and Cable.

Table of Contents

Connectivity	2 - 9
Keystone Jacks, Smooth Face Plates	2
Décor Type Face Plates, Smooth Face Plates c/w Windows	3
Stainless Steel Face Plates, Mounting Brackets	4
Surface Mount Boxes, Cat5e & Cat6 Patch Cord	5
Patch Panels	6
BIX Type Products, Telco Assemblies, Power Bars	7
Telco Plates, Modular Plugs	8
'J' Hooks, Cable Ties	9
Coax Connectors	10 - 13
Push and Seal Coax Connectors	10
BNC Crimp on Connectors and Adapters	12 - 13
Cable	14 - 18
Cat3, Quad	14
Cat5e, Cat6	15
RG6, RG11, RG59	16
Siamese Cable R59, RG6	17
Audio Control Cables	18
Greenlee Tools	19 - 26
Wire and Cable Cutters and Strippers	19
Fish Tape	20
Fish Stix and Pulling Grips	21
Quick Extensions and Bits	22
Poly Line and Lube	23
Hand Tools	24-26
Paladin & Datashark Tools	27 - 32
Testers, Strippers, Knives, Connectors	27 - 32
Hammond Products	33 - 39
Data Racks	33
Wall Mount Brackets	34
Shelving, Wire Management	35-37
Cabinets	38
Power Bars and Accessories	39

All information in this catalogue is presented solely as a guide to product selection and is believed to be reliable. All printing errors are subject to correction in subsequent releases of this catalogue. Although Tevelec has taken precautions to ensure the accuracy of the product specifications at the time of publication, the specifications of all products contained herein are subject to change without notice.

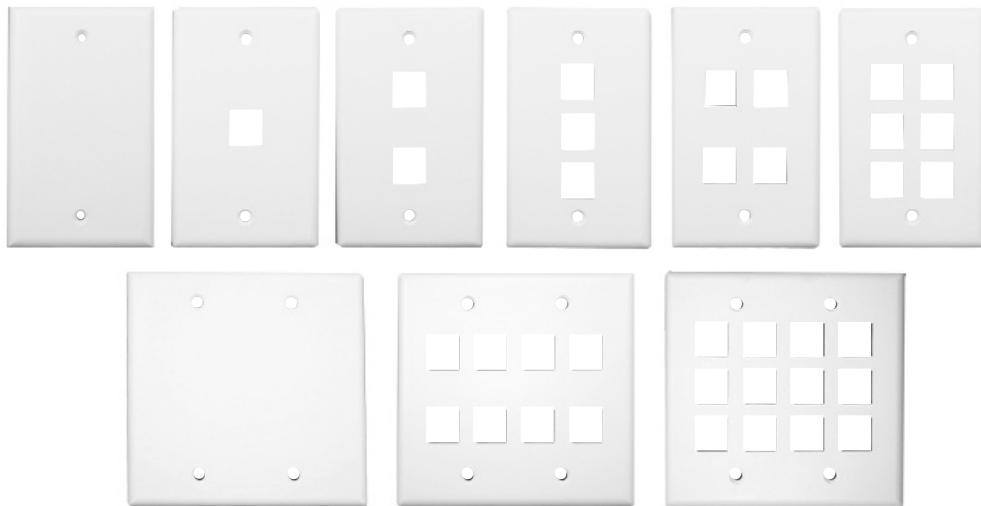
TAC10

Keystone Jacks



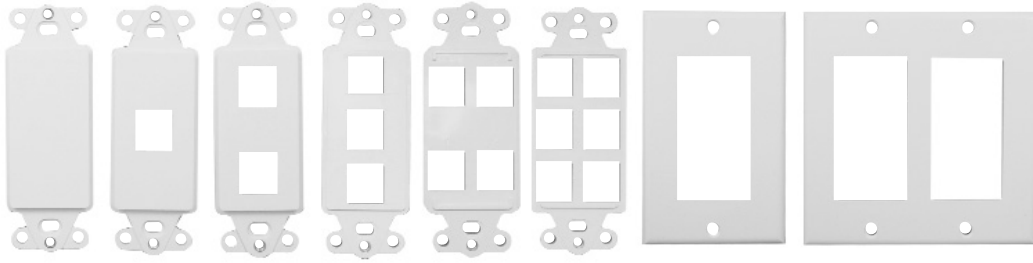
Part Number	Description	Colours
D0201	Cat 3 Keystone Jack 6C, 110 Punch Down	Black, White
D0205	Cat 5e Keystone Jack T568A/T568B, 110 Punch Down	Black, White, Red, Blue, Ivory
D0207	Cat 6 Keystone Jack T568A/T568B, 110 Punch Down	Black White, Green, Blue
D0302	Insert F-Type TV Flush Mount 3GHZ	White
D0303	BNC Keystone Jack	White
D0305	3 Way Binding Post for Audio Speakers	Black or Red Stripe
D0210	ST Fiber Keystone Jack	White
D0209	SC Fiber Keystone Jack	White
D0304	Blank Keystone Insert	White
D1691	110 Punch Down Termination Puck for D0201, D0205, D0207	Blue

Smooth Flush Mount Plate White



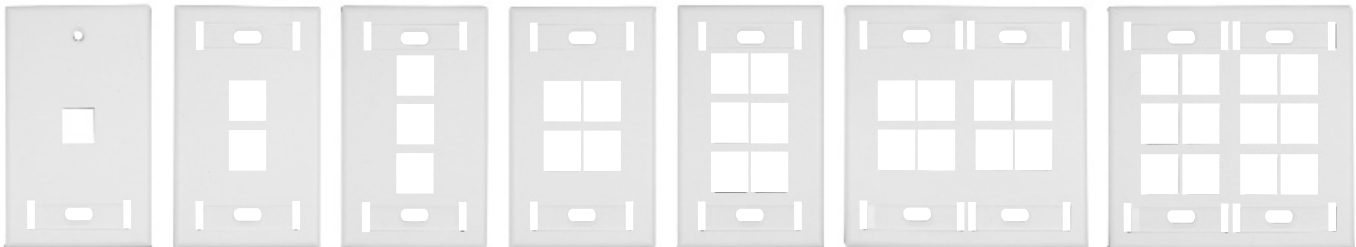
Part Number	Description
D2000	Blank Smooth Flush Mount Keystone Plate
D2001	1 Port Smooth Flush Mount Keystone Plate
D2002	2 Port Smooth Flush Mount Keystone Plate
D2003	3 Port Smooth Flush Mount Keystone Plate
D2004	4 Port Smooth Flush Mount Keystone Plate
D2006	6 Port Smooth Flush Mount Keystone Plate
D2200	Blank Double Gang Smooth Flush Mount Keystone Plate
D2208	8 Port Smooth Flush Mount Keystone Plate
D2212	12 Port Smooth Flush Mount Keystone Plate

Décor Style Inserts and Plates White



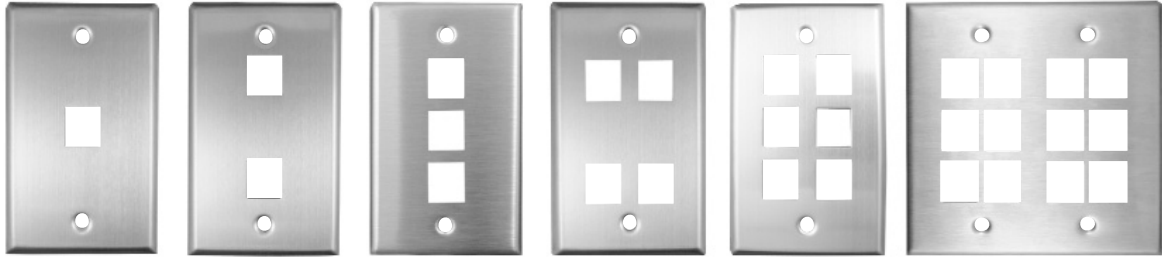
Part Number	Description
D0700	Blank Décor Insert
D0701	1 Port Décor Insert
D0702	2 Port Décor Insert
D0703	3 Port Décor Insert
D0704	4 Port Décor Insert
D0706	6 Port Décor Insert
D0707	Single Gang Décor Faceplate
D0708	Double Gang Décor Faceplate

Smooth Flush Mount Face Plate c/w ID Window White



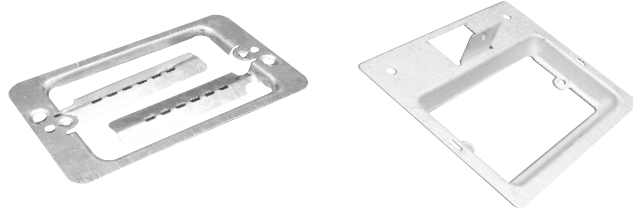
Part Number	Description
D5001	1 Port Single Gang with ID Window
D5002	2 Port Single Gang with ID Window
D5003	3 Port Single Gang with ID Window
D5004	4 Port Single Gang with ID Window
D5006	6 Port Single Gang with ID Window
D5208	8 Port Double Gang with ID Window
D5212	12 Port Double Gang with ID Window

Stainless Steel Face Plates



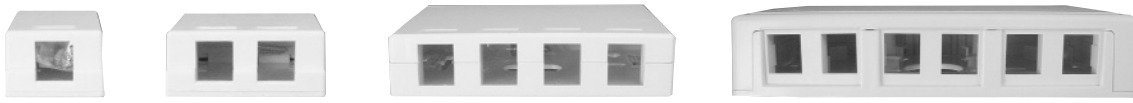
Part Number	Description
D4001	1 Port Stainless Steel Face Plate
D4002	2 Port Stainless Steel Face Plate
D4003	3 Port Stainless Steel Face Plate
D4004	4 Port Stainless Steel Face Plate
D4006	6 Port Stainless Steel Face Plate
D4212	Double Gang 12 Port Stainless Steel Face Plate

Mounting Brackets



Part Number	Description
D0380	Single Gang Aluminum Low Voltage Mounting Bracket
D0382	Pre Drywall Single Gang Aluminum Low Voltage Mounting Bracket

Surface Mount Keystone Boxes White



Part Number	Description
D0151	1 Port Surface Mount Multimedia Keystone Box
D0152	2 Port Surface Mount Multimedia Keystone Box
D0154	4 Port Surface Mount Multimedia Keystone Box
D0156	6 Port Surface Mount Multimedia Keystone Box

Above items come with 2 screws and adhesive binding.

Cat 5e Patch Cords Molded



Part Number	Description
D1001	1 ft. Cat 5e Patch Cord
D1003	3 ft. Cat 5e Patch Cord
D1006	6 ft. Cat 5e Patch Cord
D1007	7 ft. Cat 5e Patch Cord
D1010	10 ft. Cat 5e Patch Cord
D1015	15 ft. Cat 5e Patch Cord
D1025	25 ft. Cat 5e Patch Cord
D1050	50 ft. Cat 5e Patch Cord
D1100	100 ft. Cat 5e Patch Cord

Custom Lengths Available

Colours Available: 01-Black 02-White 03-Red 04-Orange 05-Yellow
06-Green 07-Blue 08-Brown 10-Grey 19-Violet

Cat 6 Patch Cable Molded

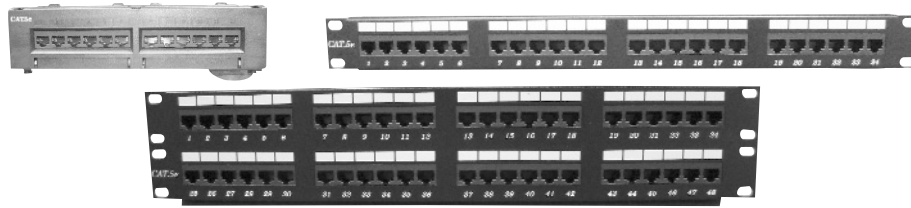


Part Number	Description
D3001	1 ft. Cat 6 Patch Cable
D3003	3 ft. Cat 6 Patch Cable
D3005	5 ft. Cat 6 Patch Cable
D3007	7 ft. Cat 6 Patch Cable
D3010	10 ft. Cat 6 Patch Cable
D3015	15 ft. Cat 6 Patch Cable
D3020	20 ft. Cat 6 Patch Cable
D3025	25 ft. Cat 6 Patch Cable

Custom Lengths Available

Colours Available: 01-Black 02-White 03-Red 04-Orange 05-Yellow
06-Green 07-Blue 08-Brown 10-Grey 19-Violet

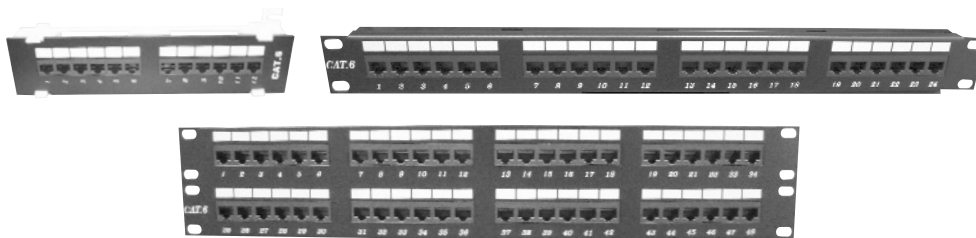
Cat 5e Patch Panels



Part Number	Description
D0512	12 Port Category 5e Patch Panel comes with wallmount bracket
D0524	24 Port Category 5e Patch Panel
D0548	48 Port Category 5e Patch Panel

- UL/cUL Verified Cat 5e
- 110 IDC, 24 & 48 port fits 19" standard size for rack or cabinet mount
- Meets or exceeds EIA/TIA-568B.2.1 Specs. for Cat 5e performance

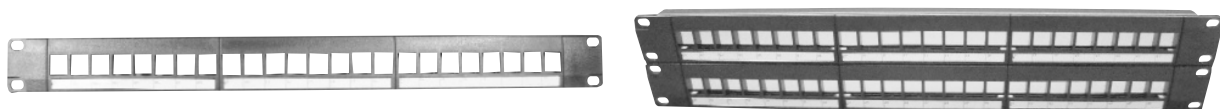
Cat 6 Patch Panels



Part Number	Description
D0612	12 Port Category 6 Patch Panel comes with wallmount bracket
D0624	24 Port Category 6 Patch Panel
D0648	48 Port Category 6 Patch Panel

- UL/cUL Verified Cat 6
- 110 IDC, 24 & 48 port fits 19" standard size for rack or cabinet mount
- Meets or exceeds EIA/TIA-568B.2.1 Specs. for Cat 6 performance

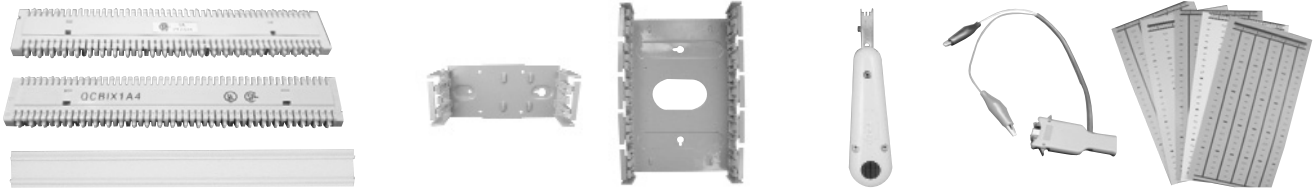
Blank Patch Panels



Part Number	Description
D0500	24 Port Blank Patch Panel
D0501	48 Port Blank Patch Panel

- UL/cUL 1863 Listed
- EIA 19" standard size for rack or cabinet mount

BIX-Type Products



Part Number	Description
D1201	1A BIX-Type Product 5 pair marking
D1202	1A4 BIX-Type Product 4 pair marking
D1225	BIX 20A Designation Strip White
D1214	10C Bix Type 2 Position Bracket
D1212	10A BIX-Type 10 Position Bracket
D1223	16A BIX Punch Tool
D1224	17A BIX-Type Test Clip, 1 pair
D1226	BIX Labels in green, red, yellow, white & blue, 5 labels per card

Telco Assembly



Part Number	Description
D0801	15FT FM-FM 50 Pin Telco
D0802	24FT FM-FM 50 Pin Telco

Custom lengths and configurations available upon request.

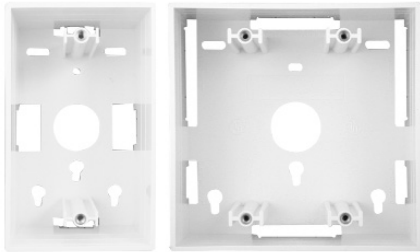
6 Outlet Compact Surge Protector



Part Number	Description
P0604	6 Outlet Compact Surge Protector

Note: Also available for cabinets listed on page 40.

Flush Mount Telco/Coax Plates and Boxes White



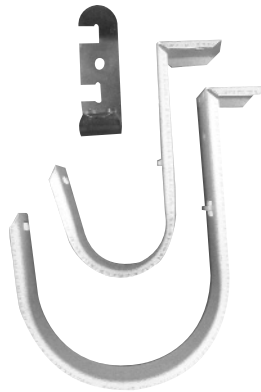
Part Number	Description
D2151	6P4C Smooth Flush Mount Jack
D2152	Duplex 4C X 4C 6P4C Smooth Flush Mount Jack
D2155	CATV Smooth Flush Mount Jack with F81 Connector
D2156	CATV Smooth Flush Mount Jack with Dual F81 Connector
D2157	Combo 4C x CATV Flush Mount Jack with F81 Connector
D2149	4C Jack for Wall Mount Phone
D0711	Décor Style Faceplate with HDMI Connector
D2161	6P4C Surface Mount Jack
D2162	Duplex 4C Surface Mount Jack
D0721	Single Gang 1.89" Depth Box White
D0722	Double Gang 1.89" Depth Box White

Mod Plugs & Connectors



Part Number	Description
D0005	Modular Plug 6P4C for Solid Wire RJ 11
D0006	Modular Plug 6P6C RJ12
D0007	Modular Plug Cat 6 8P8C for Solid/Stranded Wire RJ45
D0008	Modular Plug 8P8C Solid Wire RJ45
D0018	Modular Plug 8P8C Stranded Wire RJ45
D0002	UR Connector 3 Wire Butt Connector, Red, 100 Box
D0001	B-Connectors for Low Voltage Connections
D3914	14 ft. Telephone Cable Extension Silver Satin
D0601	2 Way Splitter 5-900 MHZ Performance CATV

J Hooks



Part Number	Description
J1	J-Hook Spring Steel for Plenum
J2	J-Hook 18 G.A Steel 2 Inches
J4	J-Hook 18 G.A. Steel 4 Inches

Cable Ties



Part Number	Description
F04018	4" 18 lb. Cable Tie Black or Natural, 1000 pack
F07050	7.5" 50 lb. Cable Tie Black or Natural, 1000 pack
F11050	11" 50 lb. Cable Tie, Black or Natural, 1000 pack
F14050	14" 50 lb. Cable Tie, Black or Natural, 100 pack

Large variety available. Please contact your rep.

F Type Female Push and Seal



Part Number	Description	Colour Code
K20001	PS F Type RG6 F T4662/T4708	Blue
K20002	PS F Type Connector RG6 Quad Plenum	Black
K20013	PS F Type connector RG6 Plenum	Grey

BNC Male Push and Seal



Part Number	Description	Colour Code
K20008	PS BNC Male RG59 Male	Brown
K20009	PS BNC Male RG6	Black
K20012	PS BNC Male Connector RG6 Plenum	Grey
K20014	PS BNC Male Connector RG59 Plenum	Brown

RCA Male Push and Seal



Part Number	Description	Colour Code
K20015	PS RCA Male Connector RG59 Plenum	Brown

BNC Plug Twist Male



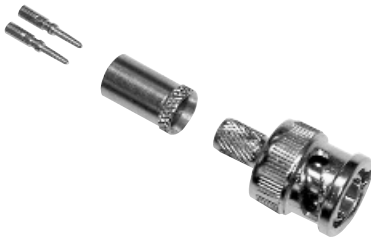
Part Number	Description
K01500	BNC Plug Twist Male 50 Ohm RG58 TOBNC10-58
K01521	BNC Plug Twist Male 75 Ohm TOBNC17-59/62
K01522	BNC Plug Twist Plenum 75 Ohm TOBNC17-59T
K01505	BNC Plug Twist Male TFE 50 Ohm RG59 TOBNC10-59T
K01512	BNC Plug Twist Male TFE 50 Ohm RG62 TOBNC10-62T

BNC Plug - 2 PC



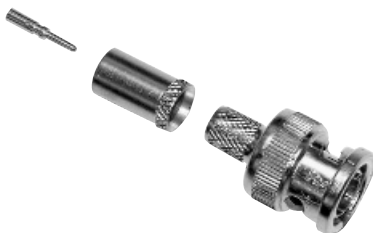
Part Number	Description
K05501	BNC Plug 2PC RG59 75 Ohm SCBNC17-9167
K05505	BNC Plug 2PC 75 Ohm Plenum SCBNC17-59T

BNC Plug - 3 PC, 2 Pins



Part Number	Description
K07724	BNC Plug 3PC Male 75 Ohm RG59 2 Pins COBNC 17-59M62

BNC Plug - 3 PC



Part Number	Description
K07712	BNC Plug 3PC RG6 75 Ohm COBNC17
K07713	BNC Plug 3PC RG6 75 Ohm COBNC17-6M
K07501	BNC Plug 3PC Male RG59 50 Ohm COBNC10-59/62
K07502	BNC Plug 3PC Male RG59T 50 Ohm COBNC10-59MT
K07504	BNC Plug 3PC Plenum 75 Ohm COBNC17-59MT
K07512	BNC Plug Male 3PC RG6 50 Ohm COBNC10-6M
K07514	BNC Plug 3PC RG59 75 Ohm COBNC17-59/62
K07505	BNC Plug 3PC Male RG59 TFE 50 Ohm COBNC10-59T
K07597	BNC Plug 3PC Male 75 Ohm COBNC17-21/597

BNC Jack Adapter



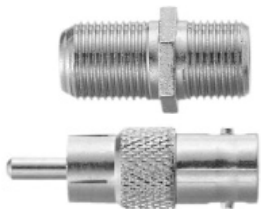
Part Number	Description
K11002	BNC Jack Adapter BNC97-1 Splice

BNC Jack Adapter



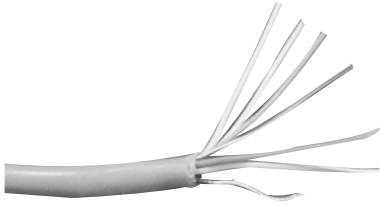
Part Number	Description
K11005	BNC Goal Post Adapter BNC110-2

Adapters



Part Number	Description
K60119	Adapter Jack to Jack FS81 Type Splice
K60103	Adapter RCA Plug to BNC Jack

Cat 3 - CMR / FT4



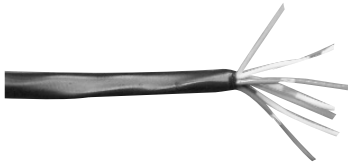
Part Number	AWG Size	No. of Pairs	Stranding	Description	Jacket Colour
T6303	24	3	Solid	Category 3 (UTP)	Grey
T6304	24	4	Solid	Category 3 (UTP)	Grey
T6325	24	25	Solid	Category 3 (UTP)	Grey

Cat 3 - CMP / FT6



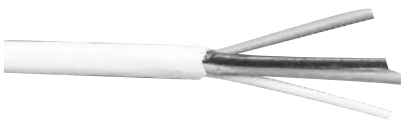
Part Number	AWG Size	No. of Pairs	Stranding	Description	Jacket Colour
T16303	24	3	Solid	Category 3 (UTP)	White
T16304	24	4	Solid	Category 3 (UTP)	White
T16325	24	25	Solid	Category 3 (UTP)	White

3 Pr Telco - Direct Burial



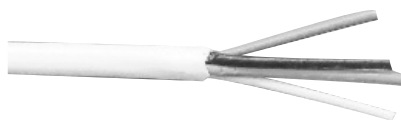
Part Number	AWG Size	No. of Pairs	Stranding	Description	Jacket Colour
T2473	22	3	Solid	(UTP)	Black

Quad Z Station Wire CMR / FT4



Part Number	AWG Size	Conductors	Stranding	Description	Jacket Colour
T3994	22	4	Solid	Station 'Z' Wire	White, Red, Brown, Beige, Grey

Quad Z Station Wire CMP / FT6



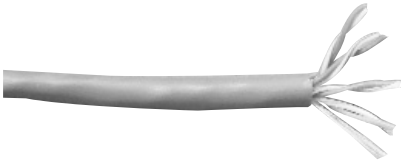
Part Number	AWG Size	Conductors	Stranding	Description	Jacket Colour
T13994	22	4	Solid	Station 'Z' Plenum	White

Quad Z Station Wire Direct Burial



Part Number	AWG Size	Conductors	Stranding	Description	Jacket Colour
T3968	22	4	Solid	Station 'Z' Burial	Black

Cat 5E - CMR/FT4



Part Number	AWG Size	No. of Pairs	Stranding	Description	Jacket Colour
T6944	24	4	Solid	Category 5E UTP	Blue, White, Yellow, Red, Green, Grey

Cat 5E - CMP/FT6



Part Number	AWG Size	No. of Pairs	Stranding	Description	Jacket Colour
T16984	24	4	Solid	Category 5E UTP	Blue, White

Cat 5E - Direct Burial, Dry Type



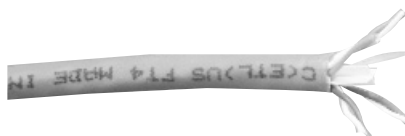
Part Number	AWG Size	No. of Pairs	Stranding	Description	Jacket Colour
T6938	24	4	Solid	Category 5E - Outdoor Aerial Burial	Black

Cat 5E - Direct Burial, Gel Filled



Part Number	AWG Size	No. of Pairs	Stranding	Description	Jacket Colour
T6939	24	4	Solid	Category 5E - Outdoor Aerial Burial	Black

Cat 6 - CMR / FT4



Part Number	AWG Size	No. of Pairs	Stranding	Description	Jacket Colour
T8864	23	4	Solid	Category 6 Enhanced UTP	Blue, White, Red, Green

Cat 6 - CMP / FT6



Part Number	AWG Size	No. of Pairs	Stranding	Description	Jacket Colour
T18864	23	4	Solid	Category 6 Enhanced UTP	Blue, White, Yellow

Coax - RG 6 CMR / FT4



Part Number	AWG Size	Description	Jacket Colour
T4708	18 Solid Bare Copper	95% BC Braid	Black, White
T4662	18 Solid CCS	60% AL Braid & Foil Shield	Black, White

Coax - RG 6 CMP / FT6



Part Number	AWG Size	Description	Jacket Colour
T14561	18 Solid Bare Copper	95% BC Braid	Black, White

Coax - RG 11 CMR / FT4



Part Number	AWG Size	Description	Jacket Colour
T4579	14 Solid Bare Copper	60% AL Braid & Foil Shield	Black, White

Coax - RG 11 CMP / FT6



Part Number	AWG Size	Description	Jacket Colour
T14579	14 Solid Bare Copper	60% AL Braid & Foil Shield	Black, White

Coax - RG 59 CMR / FT4



Part Number	AWG Size	Description	Jacket Colour
T4541	20 Solid Bare Copper	95% BC Braid	Black, White

Coax - RG 59 CMP / FT6



Part Number	AWG Size	Description	Jacket Colour
T14541	20 Solid Bare Copper	95% BC Braid	White

Composite - RG 59 Siamese Cable CMR / FT4



Part Number	AWG Size	Jacket Colour
T4611	20 Solid Bare Copper & 1 PR 18 Stranded Foil Shield	Black

Composite - RG 59 Siamese Cable CMP / FT6



Part Number	AWG Size	Jacket Colour
T14611	20 Solid Bare Copper & 1 PR 18 Stranded Foil Shield	White

Composite - RG 59 Siamese Cable Direct Burial



Part Number	AWG Size	Jacket Colour
T4658	20 Solid Bare Copper & 18/2 Stranded Unshielded	Black

Composite - RG 6 Siamese Cable CMR / FT4



Part Number	AWG Size	Jacket Colour
T4687	18 Solid Bare Copper & 18/2 C Stranded Unshielded	Black

Composite - RG 6 Siamese Cable CMP / FT6



Part Number	AWG Size	Jacket Colour
T14687	18 Solid Bare Copper & 18/2 Stranded Unshielded	White

Composite - RG 6 Siamese Cable Direct Burial



Part Number	AWG Size	Jacket Colour
T04740	18 Solid Bare Copper & 18/2 C Stranded Unshielded	Black

Composite - RG 6 Combo CAT 5E CMR / FT4



Part Number	AWG Size	Jacket Colour
T4746	18 Solid Bare Copper & 4 pr Cat 5e	Blue

Unshielded Audio Control Cable CMR / FT4



Part Number	Conductors	AWG Size	Stranding	Jacket Colour
T5452	2	18	16	Grey
T5454	4	18	16	Grey
T5480	2	16	24	Grey
T5482	4	16	26	Grey
T5252	2	14	41	Grey
T5254	4	14	41	Grey

Unshielded Audio Control Cable CMP / FT6



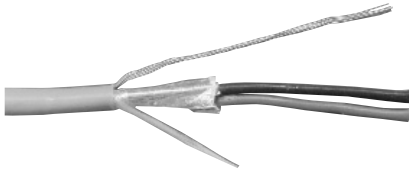
Part Number	Conductors	AWG Size	Stranding	Jacket Colour
T15452	2	18	7	Grey
T15454	4	18	7	Grey
T15480	2	16	7	Grey
T15252	2	14	7	Grey
T15254	4	14	7	Grey

Shielded Audio Control Cable CMR / FT4



Part Number	Conductors	AWG Size	Stranding	Jacket Colour
T5550	2	18	16	Grey
T5552	4	18	16	Grey
T5575	2	16	26	Grey
T5577	4	16	26	Grey

Shielded Audio Control Cable CMP / FT6



Part Number	Conductors	AWG Size	Stranding	Jacket Colour
T15550	2	18	7	Grey
T15552	4	18	7	Grey
T15575	2	16	7	Grey
T15577	4	16	7	Grey

In-Wall Speaker Cable CMR / FT4 (Round Jacket)



Part Number	Conductors	AWG Size	Stranding	Jacket Colour
T3174	2	16	26	Blue
T3175	4	16	26	Blue
T3176	2	14	41	Green
T3177	4	14	41	Green
T3178	2	12	65	Yellow

Sequential meter marked with zone and room printed on jacket.

Individually Shielded Pairs Control Cable



Part Number	Pairs	AWG Size	Stranding	Fire Rating	Jacket Colour
T3401	2	22	7	FT4 CMR	Grey
T13401	2	22	7	FT6 CMP	Grey

Tevelec stocks a large variety of wire and cable. Please reference our Master Catalogue or website for all wire and cable requirements.

Greenlee Products

Cable Cutter



Product Code	727
Description	<ul style="list-style-type: none">• Easily cuts heavier copper and aluminum cables up to 2/0 (70 mm²)• Plastic-coated, high-leverage handles for easier cuts• Heat-treated for long life• Made of heavy-duty forged steel• Precision ground, shear action, curved cutting blades• Rust-resistant black oxide finish.• Made in the USA
Capacity	Copper, Aluminum, Communications Cable
Length	9-1/4" (235 mm)
Weight	1 lb. (.45 kg)

Pro Wire Strippers



Product Code	1955
Description	<ul style="list-style-type: none">• Strips the outer jacket off both solid and stranded wire• Machined stripping stations with a positive stop provide precise stripping diameters• Ergonomically designed, extra-long cushioned handles add superior comfort and reduce hand fatigue• Long curved cutter blades reduce force required by 25% and can cut NM in a single cut• Lock tab protects cutting edges during storage• Pliers nose for working with small nuts and pulling wire• Hole in jaws for looping wires• Opening stop prevents spring from disengaging• Easy-to-read graphics• Cuts screws
Capacity	Strips 10-18 AWG solid, 12-20 AWG stranded Cuts #6-32 and #8-32 screws
Length	7-3/8" (187 mm)

Wire Strippers/Cutters



Product Code	1916
Description	<ul style="list-style-type: none">• Precision ground blades ensure consistent stripping and cutting• Heat-treated for long life• Cushioned-grip vinyl handle for comfortable use• Serrated nose grip for wire pulling and straightening• Stamped from high-carbon tool steel• Pivot joints have hardened steel bushings• Rust-resistant black oxide finish
Capacity	Copper, Aluminum, Communications Cable
Length	9-1/4" (235 mm)
Weight	1 lb. (.45 kg)

Magnum Pro Steel Fish Tape



Product Code FTS438-65BP
Specifications Steel Fish Tape - 1/8" x 65'
Weight 3.1 lbs

Product Code FTS438-100BP
Specifications Steel Fish Tape - 1/4" x 100'
Weight 7.2 lbs

Product Code FTS438-125BP
Specifications Steel Fish Tape - 1/8" x 125'
Weight 5.5 lbs

Product Code FTS438-200BP
Specifications Steel Fish Tape - 1/4" x 200'
Weight 7.2 lbs

Product Code FTS438-240BP
Specifications Steel Fish Tape - 1/8" x 240'
Weight 8.5 lbs

Description Used for general fishing in conduit

- Maximum durability
- Improved low profile tip for easy fishing through all sizes of conduit
- Available in 50'(15.2m), 65'(19.8m), 125'(38.1m) and 240'(73.2m) lengths
- 1/8", 1/4" and flat steel profiles to accommodate different fishing situations
- Advanced comfort grip and rugged case design (Patent Pending)
- Superior rapid grip tape payout and rewind (Patent Pending)
- Viewing ports to see amount of tape in case and allow quick debris removal

Fish Stix



Description

- High visible green color rods can be easily threaded together and seen when working above ceilings, down walls, or under raised floors
- 1/4" (6.4 mm) diameter fiberglass rods provide added rigidity when multiple sections are connected
- 200 lbs (0.9 kN) minimum pulling strength for long lasting durability and peace of mind
- Two different threaded tips available to accommodate various bundles of wire or cable
- 540-24 includes one 3' Glo Stix" section for improved tip visibility
- Optional Whisk Nose Tip is available for fishing over obstacles, and can be used to guide extended Glo Stix sideways above ceilings by rotating. Can also be used to fish longer lengths by providing a tip that can be snagged from the opposite direction with another extended Fish or Glo Stix with a hook nose tip

Specifications

Length	540-12:	12' (3.6 m) - (3) 4' (12 mm) Fish Stix sections
	540-24:	24' (7.3 m) - (3) 6' (1.8 mm) Fish Stix sections, (1) 3'(0.9 m) Fish Stix section, and (1) 3' Glo Stix section
Material	540-12:	1/4" (6.4 mm) dia. fiberglass rod
	540-24:	1/4" (6.4 mm) dia. fiberglass rod

Part Number	Description
540-6	Fish Stix 6' (1.8m) kit with bullet nose and 'J' hook threaded tips
540-8M	3/16" x 8' (2.4m) with bullet nose and 'J' hook threaded tips
540-12	Fish Stix 12' (3.6m) kit with bullet nose and 'J' hook threaded tips
540-15	Fish Stix 15' (4.5m) kit with bullet nose and 'J' hook threaded tips
540-18	Fish Stix 18' (5.4m) kit with bullet nose and 'J' hook threaded tips
540-20P	Professional Installers Kit: Includes (3) 1/4" x 4' Fish Stix sections, (2) 3/16" x 2' Glo Stix sections & (1) 5/32" x 4' Glo Stix section, (1) whisk, (1) 'J' hook, (1) bullet nose
540-24	Fish Stix 24' (7.3m) kit with bullet nose and 'J' hook threaded tips

Wire & Cable Pulling Grips



Description

- Can grip attach to standard D'Versibit or to any standard 1/4" Quick Connect Adapter.
- Swivel design reduces twisting.
- Mesh design holds wire or cable during pulling.
- Capacity: 100 lbs. pulling force

Specifications

For pulling wire, cable or fish tape through walls
Pulling Strength: 100 lbs.

Part Number	Description
125Q	For 3/8" to 1/2" wire
150Q	For 1/2" to 9/16" wire
168Q	For 3/4" to 1" wire

Quick Connect Extensions



Description

- Flexible shaft allows easy access to difficult and tight areas
- Convenient 1/4" quick connect receiver accepts most standard quick change accessories.
- Multiple extensions can be easily joined to create the perfect length for any job.

Specifications

- Capacity: Any 1/4" quick change accessory 3/4" diameter and under.

Part Number	Description	Weight
921	Quick Change Extension on System Kit	
921-12	Extension, Quick Change	3116x12
921-18	Extension, Quick Change	3116x18
921-24	Extension, Quick Change	3116x24
921-36	Extension, Quick Change	3116x36

Stubby Auger Bit



Part Number

60A-1: 1" Quick Change Bit
60A-3/4: 3/4" Quick Change Bit

Description

- Over center single flute design for cleaner holes and less splintering.
- Unique cutting edge design for fast and smooth cutting action.
- Shorter than the top competitor's bit for better access to tight spaces between studs and joists.
- Perfect for drilling 2" and 4" joists.
- Self-Feeding screw point draws bit through all wood types with less operator fatigue.
- Eliminates the need for special tools such as expensive right angle drills or multiple steps to cut the hole to size.
- 1/4" hex quick change design for fast and easy use in all drill types.
- Clearly marked with bit diameter and catalog number on shank for easy identification.

Specifications

Maximum bit capacity for Quick Connect Extensions is 3/4".
Not for use in wood with nails.
Hole Diameter: 1" (25,4mm) or 3/4"
Overall Length: 4.5" (144mm)
Weight: .4 lbs. (199g)

Poly Line



Product Code 430

- Description**
- Ready-to-use, pre-punched hole in lid with resealable cap
 - Use with power fishing systems directly from the container
 - Resists tangling when dispensing
 - Rot and mildew resistant
 - Handy reusable plastic dispenser pail with handle keeps the line dry
 - Use to pull rope through conduit

Specifications

Length 6500' (1981 m)
Capacity 210 lbs. (934 N) average breaking strength
Weight 11 lbs. (5 kg)

Clear Lube Pulling Lubricant



Product Code CLR-Q

- Description**
- Designed for use within electrical or datacom cable pulls.
 - Clear and colorless for quick, easy clean-up.
 - Excellent lubricity for fast pulls (.27-.29 COF).
 - Environmentally safe, non-hazardous, non-toxic and non-corrosive.
 - Easy to apply either by hand, brush or pump.

- Specifications**
- Temperature Range Remains stable over a wide range of temperatures, 20° F to 190° F (-6° C to 88° C)
 - Polymer base with no silicon additives.
 - Average coefficient of friction (IEEE, 375-2 test procedure), .27 in PVC and .29 in EMT.
 - Three-year shelf life with no deterioration in lubricant

Telephone Ratchet Crimper - Economy



Product Code

45553

Description

- Combination tool terminates RJ11 6P4C, RJ12 6P6C and RJ45 8P8C modular style plugs
- No need to change crimping dies
- Full-cycle ratchet mechanism provides consistent, quality terminations every cycle
- Straight action ensures uniform crimp
- Small, compact design
- Built-in wire cutter and stripper
- All-steel frame has rust-resistant, black oxide finish

Telephone Ratchet Crimper for 4-, 6- and 8-position Modular Plugs - Pro



Product Code

45575

Description

- Combination tool terminates 8-position, 6-position, and 4-position modular style plugs
- No need to change crimping dies
- Full-cycle ratchet mechanism provides consistent, quality terminations every cycle
- Straight action ensures uniform crimp
- Small, compact design
- Built-in wire cutter and stripper for flat cable
- All-steel frame has rust-resistant, black oxide finish

Specifications

Typically used for Modular Plug Connectors. Our Telephone Ratchet Crimper was designed with a compact head to fit into tight spaces and ergonomic handles for operator comfort

Kwik Stripper - Twisted Pair Stripper



Product Code

45579

Description

- No tool is better for trimming the jacket from twisted pair cable without damaging the individual conductors
- Blade depth adjustment ensures precise cutting depth
- Blade penetration controlled by tension loop
- Strip length gauge

Specifications

Typically used for Modular Plug Connectors

Compression Crimping Tool



Product Code	60807
Description	<ul style="list-style-type: none">• Requires less force than a traditional hex-style crimp.• Ergonomic Sanoprene grips reduce hand fatigue.• Terminates most compression-style connectors.• Fully adjustable for crimping different coax connector types.
Specifications	7.2" x 2.2" x 0.8" Cable preparation: Braid and Dielectric - 1/4" Center Conductor - 5/16"

Punchdown Tool



Product Code	46023
Description	<ul style="list-style-type: none">• Inserts wire for a corrosion-resistant termination and trims off excess wire.• Terminates 66, 110, BIX and Krone cross-connect and wall jacks.• Spring-loaded for fast, low effort wire seating and termination.• Internal impact mechanism eliminates jamming for longer, trouble-free service life.• Adjustable low- and high- impact force settings.• Bayonet-style blade locking mechanism.• Neoprene pad for shock absorption.• Spare blade storage in the handle.• Color-coded yellow on the cut side of tool.

Replacement Blades for Punchdown Tool



Product Code	46024
Description	<ul style="list-style-type: none">• Cut side labeled to eliminate costly punching errors.• Made of high-carbon tool steel, heat-treated and precision ground for long life.• Reversible blades for seating/cut or seating only for jumper wires.• Rust-resistant finish.
Specifications	<ul style="list-style-type: none">• Cut side labeled to eliminate costly punching errors.• Made of high-carbon tool steel, heat-treated and precision ground for long life.• Reversible blades for seating/cut or seating only for jumper wires.• Rust-resistant finish.

Utility Knife



Product Code	0652-11
Description	<ul style="list-style-type: none"> • Over-molded for secure, comfortable grip. • Retractable three-position blade for safety and convenience. • Easy front-loading design provides for quick blade change. • Blade storage in pop-up holder. • Packaged with three heavy-duty patented serrated blades (Cat # 9952-11). <p>Note: This is not an insulated tool.</p>
Specifications	<p>Overall Length: (closed) 6-3/16" (15.7 cm) Weight .44 lb. (.20 kg)</p>

Blades for Utility Knife



Product Code	9952-11
Description	<ul style="list-style-type: none"> • Replacement blades for 0652-11 • 5 blades per pack

Non-Contact Self-Testing Voltage Detector



Product Code	GT-12
Description	Used to detect voltage in outlets, lighting fixtures, circuit breakers, wires and cables or to find a break in a wire.
Specifications	<p>Voltage Detection: 50V-1000VAC Frequency: 50-500Hz Measurement Category: CAT IV, 1000V</p>
Features	<ul style="list-style-type: none"> • Automatic self-test verifies the integrity of the unit • Bright LED's and audible alarm sound if voltage is present • Silent-mode feature for use in quiet settings • Safe, non-contact voltage detection • Automatically turns off after five minutes of non-use to conserve battery life. • Low battery indicator • Lifetime Limited Warranty

Paladin Products

SureStrip - Combo UTP, Coax Stripper and Cutter



Product Code	PA1119
Description	<ul style="list-style-type: none">• Professional all-in-one cutter and stripper for both twisted pair and coaxial cables!• Cuts UTP/STP and coaxial cables, Strips Cat6, Cat5e, Cat5, Strips RG6, RG6 Quad and RG59 coaxial cables for 2-level cable TV "F" connector
Specifications	RG6/6 Quad, RG59, Cat5, Cat5e, Cat6

Twisted Pair, Coax, Tester



Product Code	PA1543
Description	<ul style="list-style-type: none">• Test data & telephone cable for proper pairing for EIA/TIA-568A & B, Token Ring, 10 Base T & common Cat5, Cat5e, Cat6 configurations• Also tests continuity of 50 & 75 ohm coaxial cables with BNC, RCA or "F" terminations
Specifications	EIA/TIA-568A & B, Token Ring, 10 Base T

All-in-one Crimping Tool



Product Code	PA1556
Description	<ul style="list-style-type: none">• Truly an all-in-one phone & data tool with multi-function cutting, stripping and crimping capabilities!• Crimping cavities for RJ45, RJ11/RJ12 & RJ22 handset modular plugs. Cuts and strips round UTP/STP phone and data cable along with flat satin phone cable
Specifications	28-22 AWG (.08 - .34 mm ²) flat or round; solid or stranded telephone & data cables

Tone and Probe, Cable Check Tester



Product Code	PA1573
Description	<ul style="list-style-type: none">• Identify connector & cable pin-out with true cable mapping for both patch cords and installed cables• Also perform full-range continuity testing, line condition, signal tracing & wire identification with tone generator and tone probe cable tracer
Specifications	Cables up to 600 ft.

LAN and Cable Check Tester



Product Code	PA1574
Description	<ul style="list-style-type: none">• Continuity tester for UTP and flat satin cables with RJ45 terminations• Tests both data & telephone connection schemes including patch cords & installed cables
Specifications	Cables up to 1650 ft.

Data/Link ID and Cable-Check



Product Code	PA1576
Description	<ul style="list-style-type: none">• Tests UTP Cables, Detects and Identifies 10/100 Network Traffic• Tests UTP, STP & flat satin cables with RJ45 termination• Tests both data & phone connection schemes including patch cords & installed cables to identify: Good connections, opens, shorts, cross-connection.• Identifies data & link transmission speeds with real time detection: 100 MB & 10 M.• Includes 9V battery, 2 RJ45 patch cords and nylon carrying case with belt loop

Coax, LAN, Cable Tester



Product Code	PA1594
Description	<ul style="list-style-type: none">• Quickly and easily test RJ45, cable TV "F", RCA, and BNC cabling used in smart home installations• Tests RJ45 patch cords and network installations to identify good connections, opens, shorts or cross-connections
Specifications	Works w/phone, data lines.

Butt Set Tester



Product Code	PA1780
Description	Portable handset for installers, repair technicians and other authorized personnel to use for line testing and temporary communications.
Specifications	Analog
Features	<ul style="list-style-type: none">• Phone line powered eliminates need for external power source.• Provides DTMF (touch tone) and dial pulse output .• Talk, ring and monitor modes.• High impedance monitor mode does not interfere with data, conversation or signaling.• LED identifies polarity.• Analog
Advantages	<ul style="list-style-type: none">• Memory storage for 10 frequently dialed numbers.• Water resistant housing.• Field replaceable line cord.• Headset jack included.• ABN cord set and AT&T snap-clip included.

GripPack Kit



Product Code	PA4942
Specifications	Kit: 6 Pieces
Features	<ul style="list-style-type: none">• Easy-on, easy-off with quick release belt clip, Belt clip swivels so the holster moves with you and the tools stay out of the way• Datacomm scissors have serrated blades & ergonomic handles• SurePunch Pro punchdown tool terminates cable with a single punch!• Get a grip on your cabling projects with this complete kit.
Includes	<ul style="list-style-type: none">• (1) Data SureStrip Cat5e, Cat6, Phone Cutter/Stripper 1116• (1) Datacomm & Telecom Scissors 1925• (1) SurePunch Pro PDT Handle Only 3589• (1) SurePunch Pro PDT Detachable Light 4599• (1) 110/66 Blade - SurePunch & SurePunch Pro PDTs 4571• (1) GripPack Tool Holster (Empty) 4940

GripPack SurePunch® Pro Installer's Kit



Product Code	PA6520
Description	GripPack SurePunch® Pro Installer's Kit
Specifications	Tool: 30 Tools in One
Features	<ul style="list-style-type: none">• Compound Leverage System delivers twice the gripping & cutting power yet requires less hand force• Unique interlocking gears operate the tool smoothly you'll feel the difference and feel the power• Effortless one-hand flip open• Pivoting handle covers protect palms from folding components• Bit adapter holds any and all 1/4" bits• PowerLocks secure folding components when in use• #1 Phillips and 1/4" Socket Drive also lock at 90 degree angle for maximum torque
Includes	<ul style="list-style-type: none">• (1) Needle Nose & Gripping Pliers• (1) 110 & 66 Punchdown Blades• (1) Wire Hook & Spudger• (1) 18/20/22/24 AWG Strippers Built-Into Punchdown Blades• (1) Large ROMEX non-metallic building electrical wire & Hard Wire Cutter• (1) UTP & Round Cable Stripper• (1) 12/14/16 AWG & ROMEX Stripper• (1) SOG Knife with 1/2 Serrated Blade• (1) 1/4" Socket Drive with Hex Bit Adapter• (1) 26-18 AWG Smaller Terminal Lug Crimper• (1) 16-10 AWG Large Terminal Lug Crimper• (1) #4 Slotted Screwdriver• (1) #6 Slotted Screwdriver• (1) #1 Phillips Screwdriver• (1) 3-in-1 File• (1) Bottle Cap Opener• (1) Scissors

PowerPlay - PowerBlade Multi-Tool Knife



Product Code

PA6575

Description

PowerPlay - PowerBlade Multi-Tool Knife

- 12 Tools-in-One! Electrician's knife and 11 separate strippers for wire and cable.
- Features patent pending wire and cable stripping system.

Features

- SOG® beveled-edge knife
- .150"-.250" cable strippers built into handle of tool
- UTP stripper with spring-loaded blade and V-notch to adjust to cable
- 22-10 AWG wire strippers for both solid and stranded wire
- Total length is 7.5 in., and the blade length is 3 in.

DataShark All-in-One Crimper



Product Code

PA70005

Description

DataShark All-in-One Crimper for Crimping RJ45 RJ11/12 WE/SS Plugs; Cuts / Strips Flat and Round Cable.

- All-in-one crimper crimps RJ45 computer plugs and RJ11/12 telephone plugs, also cuts and strips round and flat cables.

DataShark DIY Crimp Bundle



Product Code

PA70009

Description

DataShark DIY Crimp Bundle

- Bundle includes: universal cable stripper, all-in-one RJ45/11/12 modular plug crimper, 10-RJ45 modular plugs, 10-RJ11/12 modular plugs

Contains

All-in-One Crimper, Universal Stripper, Connectors in Clamshell

DataShark Compression Crimper Cable TV "F"



Product Code

PA70014

Description

DataShark Compression Crimper Cable TV "F" for Crimping Waterproof Cable TV "F" Compression Connectors

- Crimps compression connectors to create cables for satellite and cable TV, works with RG6, RG6 Quad and RG59 coax cable, compatible with DataShark and Paladin Tools connectors (cable TV "F" compression only)

DataShark RG6 & RG6Q Cable TV 'F' Compression Connectors



Product Code

PA70024

Description

DataShark RG6 & RG6Q Cable TV "F" Compression Connectors 10pk

- Large hex nut for easy installation, weather tight 360 degree cable gripping sleeve, 10 pack come in a clamshell

Specifications

RG6 & RG6Q

DataShark Network Cable Tester



Product Code

PA70025

Description

DataShark Network Cable Tester for Testing UTP & Phone Patch Cables and Installed Cable

- Identifies good connections, opens, shorts, and cross connections, LED clearly lights each pin, ability to choose between slow and fast speeds, kit includes: main transmitting unit, remote unit, 2-RJ45 shielded patch cables, carrying case

DataShark Network Tool Kit with Cable



Product Code PA70027

Description **DataShark Network Tool Kit with Cable**

- Kit includes: universal cable stripper, all-in-one RJ45/11/12 modular plug crimper, non-impact punchdown tool, 10-RJ45 modular plugs, 75' of Cat5e twisted pair cable

DataShark Home Entertainment Tool Kit with Cable



Product Code PA70028

Description **DataShark Home Entertainment Tool Kit with Cable**

- Kit includes: round cable cutter, coax cable stripper, compression crimper for RCA, BNC and cable TV "F", 75' of RG6 coax cable

DataShark Universal Cable TV/UTP Cutter Stripper



Product Code PA70029

Description **DataShark Universal Cable TV/UTP Cutter Stripper**

- Universal tool that cuts and strips UTP and coax cables, spring-loaded, adjust blade cutting depth for network cable, coax stripping blades pre-set for 2-level 0.25"/0.25" strip for RG6/6 Quad, RG59/7/11

Specifications 0.25"/0.25" coax strip

DataShark 110-Style Punchdown Tool



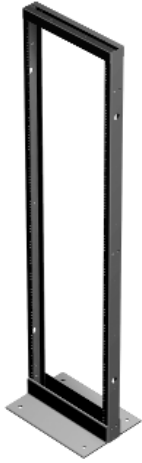
Product Code PA70034

Description **DataShark 110-Style Punchdown Tool**
for Terminating 110-Style Jacks and Patch Panels. Fixed Blade

Specifications 110 IDC Punchdown

Hammond Products

2 Post Open Relay Rack Welded



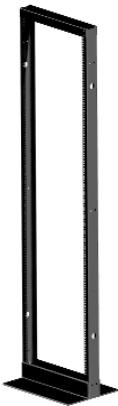
Product Code

DNRR77HDW

Description

- Suitable for many 19" or 23" rack mount applications, providing complete access to equipment
- No assembly required
- Fabricated in 10-gauge welded steel or light duty (12-gauge steel) version available
- Universal EIA (5/8 - 5/8 - 1/2 inch) spacing
- For use as a single, free standing unit for sturdy support of standard 19" & 23" (ie...DNRR2377HDWB & DNRR2384HDWB) rack mount devices
- Base can be lagged to floor or will accept casters & dollies. Part Numbers RRLDCASTER, RRLPDOL or RRHDDOL (19" versions only)
- Finished in rugged textured black powder paint

2 Post Knockdown Open Relay Rack



Product Code

DC2R44

Description

- **Shipped knockdown in a flat pack container for easy handling and shipping protection.**
- 19" Mounting Rail Posts (universal square-hole) with 77" (44U) panel height
- Front flange is punched with square holes.
- EIA Unit space marking holes help you mount your equipment in the correct location.
- Fabricated in 12-gauge steel construction.
- Finished in premium black powder paint.
- Base can be lagged to floor or will accept casters & dollies (Part Numbers RRLDCASTER, RRLPDOL or RRHDDOL).

4 Post Relay Rack 32"-48" Deep



Product Code

DC4R4448

Description

- 19" rail mounting posts
- Choice of 24U or 44u panel height
- Choice of 24"- 36" or 32" - 48" models - adjustable over-all depth
- 20.5" over-all Width
- Shipped knockdown in a flat-pack for easy handling and shipping protection. (Can be assembled on a skid - on special order).
- 4 x 19"-Mounting Rail Posts (12 gauge, universal square-hole)
- Premium black textured (powder) paint
- 1 x (set of 2) Horizontal cable management bars included (DC4RSHCM)
- Load capacity 2000 lbs
- Optional third rail permits two different hardware mounting depths

Hinged Panel Bracket KD 2U



Product Code

HPB19003BK1

Description

- Fixed depth bracket for 19" rack mount equipment
- Includes mounting template for easy installation
- Full EIA hole centers (5/8 - 5/8 - 1/2 inch spacing) drilled and tapped for 10-32 hardware
- Hinged on one side
- Smooth 8" x 1.5" hole on the rear for wire access
- Multiple cable lacing tie offs punched into unit
- Fixed depth of 6"
- Rear has key holes for ease of wall mounting
- Includes 10-32 black rack screws with integral - factory installed, mar resistant black nylon washer
- 16 gauge formed steel
- Rugged textured black powder paint finish
- Wall mounting hardware not included

Adjustable Depth Panel Bracket 4U



Product Code

APB19007BK1

Description

- Adjustable depth bracket rack for 19" rack mount equipment.
- Full EIA hole centers (5/8 - 5/8 - 1/2 inch spacing) drilled and tapped for 10-32 hardware.
- Double hinged on one side to access rear of equipment.
- Smooth 8" x 2.5" hole on the rear for wire access.
- Includes mounting template for easy installation.
- Adjustable depth from 12 to 18".
- Rear mounting holes are key holes for easy installation.
- Multiple cable lacing tie offs punched into unit.
- Includes 10-32 black rack screws with integral - factory installed, mar resistant black nylon washer.
- 14 gauge formed steel.
- Weight load tested (APB19007) to 70 pounds.
- Rugged textured black powder paint finish.
- Wall mounting hardware not included.

Adjustable Depth Panel Bracket 8U



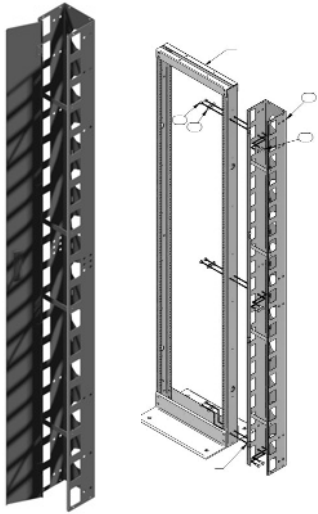
Product Code

APB19014BK1

Description

- Adjustable depth bracket rack for 19" rack mount equipment.
- Full EIA hole centers (5/8 - 5/8 - 1/2 inch spacing) drilled and tapped for 10-32 hardware.
- Double hinged on one side to access rear of equipment.
- Smooth 8" x 2.5" hole on the rear for wire access.
- Includes mounting template for easy installation.
- Adjustable depth from 12 to 18".
- Rear mounting holes are key holes for easy installation.
- Multiple cable lacing tie offs punched into unit.
- Includes 10-32 black rack screws with integral - factory installed, mar resistant black nylon washer.
- 14 gauge formed steel.
- Weight load tested (APB19007) to 70 pounds.
- Rugged textured black powder paint finish.
- Wall mounting hardware not included.

Vertical Wire Manager



Product Code

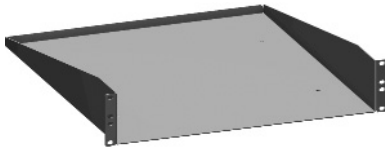
RRCM44UD

Description

- For use with DNRR__HD racks ONLY
- Used to organize bundles of connecting wire
- Manufactured in 16 Ga. steel
- Mounts to either side of open relay rack (includes mounting hardware)
- Models with doors include a front facing hinged door secured with magnets
- Finished in rugged black textured powder paint
- Two units shown here, with a heavy duty - open relay rack

Part Number	Profile	Includes Door	Use with Rack Panel Height	
			Inches	Units
RRCM44UD	6" x 5"	Yes	77/78.75	44/45

2U Unvented Rack Mount Shelf



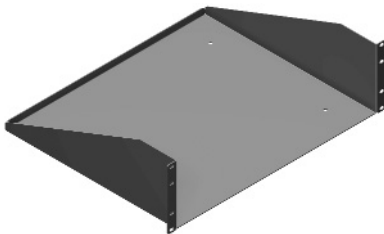
Product Code

RASU190315BK

Description

- Fits any standard 19-inch rack and can accommodate up to 200lbs of equipment.
- 14 gauge steel
- Black powder coat finish
- 15" depth

3U Unvented Rack Mount Shelf



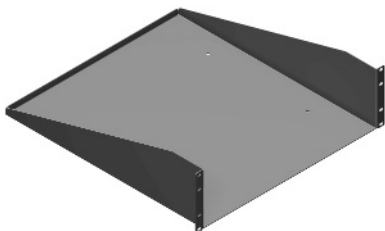
Product Code

RASU190515BK1

Description

- Fits any standard 19-inch rack and can accommodate up to 200lbs of equipment.
- 14 gauge steel
- Black powder coat finish
- 15" depth

3U Unvented Panel Rail Mounted Fixed Chassis/Shelf



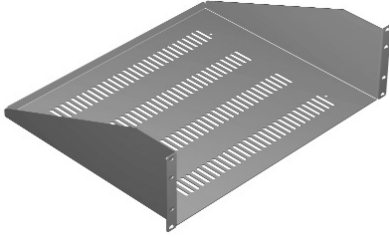
Product Code

RASU190520BK1

Description

- Shelves feature formed 14-gauge steel construction
- Choice of four heights - 1.75"(1U), 3.5"(2U), 5.25"(3U) or 7"(4U) of panel space
- Rear lip folded up for extra strength & acts as a rear equipment retainer
- Weight load tested: 200 pounds
- Mounts to front rail either as an internal shelf or external shelf/work area
- 20" depth
- Rugged powder paint finish

1U Vented Rack Mount Shelf



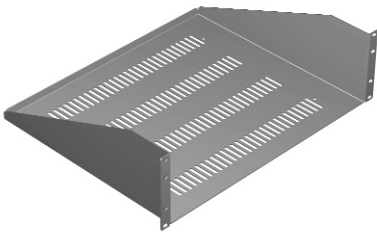
Product Code

RASV190115BK1

Description

- Fits any standard 19-inch rack and can accommodate up to 200lbs of equipment.
- 15" depth
- 14 gauge steel
- Black powder coat finish
- Available in solid or vented

3U Vented Rack Mount Shelf



Product Code

RASV190515BK1

Description

- Fits any standard 19-inch rack and can accommodate up to 200lbs of equipment.
- 15" depth
- 14 gauge steel
- Black powder coat finish
- Available in solid or vented

2U Unvented Panel Centre Shelf



Product Code

DNDMS19BK1

Description

- Dual modem shelf permits front and rear access to modems on open relay racks
- Overall 19.5" deep
- 16-gauge steel construction
- Front & rear lip folded for extra strength & become equipment retainers

2U Vented Panel Rail Mounted Dual Modem Center Shelf



Product Code

DNDMV19BK1

Description

- Dual modem shelf permits front and rear access to modems on open relay racks
- Vented 19"
- Uses 3.5" (2U) of vertical panel space
- Overall 19.5" deep
- The vented version provides a sturdy shelf without obstructing upward heat movement
- 16-gauge steel construction
- Front & rear lip folded for extra strength & become equipment retainers
- Colour Black

2U Cable Manager Panel



Product Code

PCMDD19003BK1

Description

- Continuous hinged door with magnetic closure strip.
- Four oblong openings (3.5" x 1.56") top & bottom - allowing for cable exit top and/or bottom.
- Openings in the rear for cable entry/exit.
- Standard 19" rack panel mount.
- Available in 3 panel heights (1U and 3U models pictured).
- 2.5" overall depth.
- Rugged textured black powder paint finish.
- Requires mounting hardware.

2U Flat Steel Panel



Product Code

PBPS19003BK2

Description

- Strong 14 Gauge steel.
- More economical than aluminum.
- Standard 19" rack panels.
- Rugged powder paint finish.
- Smooth paint finish for easy labelling.
- Standard rack mount punching on both ends.
- Requires mounting hardware

4U Flat Steel Panel



Product Code

PBPS19007BK2

Description

- Strong 14 Gauge steel
- More economical than aluminum
- Standard 19" rack panels
- Rugged powder paint finish
- Smooth paint finish for easy labelling
- Standard rack mount punching on both ends
- Requires mounting hardware

Swing-out Wall Mount Cabinet



Product Code

SWCC1901021BK2

Description

- Economic, light duty design - wall mount - 19" rack cabinet.
- Ventilated slots front & side.
- Body is hinged from wall mount section - 3.9" (100 mm) depth
- Pre-punched top for optional fans.
- Wall mount section includes cable access panels top & bottom.
- Both side panels are removable. Knockouts provided for optional lock installation (part number 1427BK).
- Includes 2 - pair of mounting rails (square hole punched - with starter pack of push in nuts).
- Includes smoked tempered glass door.
- Glass door opens a full 180 degrees for easy access to rack mount equipment.
- Glass door is easily removable and can be hinged either side.
- Glass door is complete with lock & key.
- Shipped assembled - ready to install.
- Recommended maximum static load weight - 80 pounds.
- Rugged black powder paint finish.

Server Cabinet Assembly



Product Code

DC2004224 (24U)
DC2004242 (42U)

Description

- Available in two heights: 42U & 24U models
- 43.3" Over-all Depth
- 23.6" Over-all Width
- Qty 4 - 19" Rack Mounting Rails (universal square-hole)
- Enhanced Locking Door Handles
- Front perforated door w/ over 65% airflow
- Split rear perforated "barn" doors w/ over 65% airflow
- Top has 2 round cable egress (cw/solid filler panels)
- Open bottom to allow raised tile floor cable and air access
- Removable rear plate for floor-level cable entry
- Black textured (powder) paint
- Includes a pair of solid removable side panels
- 4 x Leveling feet and casters included
- Ships on standard pallet

Horizontal Rack Mount Outlet Strip



Product Code

1583T12B1BKX

Description

- Designed for power distribution from both the front and rear of the unit.
- 6 Front/6 Rear
- With lighted on/off switch or red pilot light to indicate power on with surge protection.
- Heavy 14 gauge wire cord - 14/3 SJTW for extreme temperature ranges and integral molded plug.
- Plug types NEMA 5-15P straight blade.
- Includes 15 Amp, 125 VAC circuit breaker to prevent accidental overload.
- Panel dimensions are 1.75" high (1U) and 19" rack width.
- CSA certified, Standards C22.2 (No. 21-95 and No. 42-99)
- UL recognized, Standard UL1363 - file # E166039
- Colour Black

Large variety available. Please contact your rep.

10-32 Screw w/Washer Package



Product Code

1421ABK100

Quantity

100

Description

- 10-32 x 0.625"
- Slotted & phillips combination pan head screws
- Black oxide finish
- Includes integral - factory installed, mar resistant black nylon washer
- Saves installation time & panel space (required when mounting multiple 1U (1.75") panels or 1U equipment close spaced)

Zinc Plated 10-32 Cage Nuts



Product Code

1421CNA100

Description

- 10-32 cage nuts for square hole punched panel rails
- Has the holding strength of a 10-32 nut
- Zinc plated

<u>TEVELEC</u>	<u>PAGE</u>	<u>TEVELEC</u>	<u>PAGE</u>	<u>TEVELEC</u>	<u>PAGE</u>	<u>TEVELEC</u>	<u>PAGE</u>	<u>TEVELEC</u>	<u>PAGE</u>
430	23	D0380	4	D2200	2	K07505	12	T13401	18
727	19	D0382	4	D2208	2	K07512	12	T13994	14
921	22	D0500	6	D2212	2	K07514	12	T14541	16
1916	19	D0501	6	D3001	5	K07597	12	T14561	16
1955	19	D0512	6	D3003	5	K07712	12	T14579	16
13178	18	D0524	6	D3005	5	K07713	12	T14611	17
45553	24	D0548	6	D3007	5	K07724	12	T14687	17
45575	24	D0601	8	D3010	5	K11002	13	T15252	18
45579	24	D0612	6	D3015	5	K11005	13	T15254	18
46023	25	D0624	6	D3020	5	K20001	10	T15452	18
46024	25	D0648	6	D3025	5	K20002	10	T15454	18
60807	25	D0700	3	D3914	8	K20008	10	T15480	18
0652-11	26	D0701	3	D4001	4	K20009	10	T15550	18
125Q	21	D0702	3	D4002	4	K20012	10	T15552	18
1421ABK100	39	D0703	3	D4003	4	K20013	10	T15575	18
1421CNA100	39	D0704	3	D4004	4	K20014	10	T15577	18
150Q	21	D0706	3	D4006	4	K20015	10	T16303	14
1583T12B1BKX	39	D0707	3	D4212	4	K60103	13	T16304	14
168Q	21	D0708	3	D5001	3	K60119	13	T16325	14
540-12	21	D0711	8	D5002	3	K70501	11	T16984	15
540-15	21	D0721	8	D5003	3	K70502	11	T18864	15
540-18	21	D0722	8	D5004	3	K70503	11	T2473	14
540-20P	21	D0801	7	D5006	3	K70504	11	T3174	18
540-24	21	D0802	7	D5208	3	K70505	11	T3175	18
540-6	21	D1001	5	D5212	3	P0604	7	T3176	18
540-8M	21	D1003	5	DC2004224	38	PA1119	27	T3177	18
60A-1	22	D1006	5	DC2004242	38	PA1543	27	T3401	18
60A-3/4	22	D1007	5	DC2R4	33	PA1556	27	T3968	14
921-12	22	D1010	5	DC4 R4448	33	PA1573	27	T3994	14
921-18	22	D1015	5	DNDMS19BK1	36	PA1574	28	T4541	16
921-24	22	D1025	5	DNDMV19BK1	36	PA1576	28	T4579	16
921-36	22	D1050	5	DNRR77HDW	33	PA1594	28	T4611	17
9952-11	26	D1100	5	F04018	9	PA1780	28	T4658	17
APB19007BK1	34	D1201	7	F07050	9	PA4942	29	T4662	16
APT19014BK1	34	D1202	7	F11050	9	PA6520	29	T4687	17
CLR-Q	23	D1212	7	F14050	9	PA6575	30	T4708	16
D0001	8	D1214	7	FTS438-100BP	20	PA70005	30	T4746	17
D0002	8	D1223	7	FTS438-125BP	20	PA70009	30	T5252	18
D0005	8	D1224	7	FTS438-200BP	20	PA70014	31	T5254	18
D0006	8	D1225	7	FTS438-240BP	20	PA70024	31	T5452	18
D0007	8	D1226	7	FTS438-65BP	20	PA70025	31	T5454	18
D0008	8	D1691	2	GT-12	26	PA70027	32	T5480	18
D0018	8	D2000	2	HPB19003BK1	34	PA70028	32	T5482	18
D0151	5	D2001	2	J1	9	PA70029	32	T5550	18
D0152	5	D2002	2	J2	9	PA70034	32	T5552	18
D0154	5	D2003	2	J4	9	PBPS19003BK2	37	T5575	18
D0156	5	D2004	2	K01500	12	PBPS19007BK2	37	T5577	18
D0201	2	D2006	2	K01505	12	PCMDD19003BK1	37	T6303	14
D0205	2	D2149	8	K01512	12	RASU190315BK	35	T6304	14
D0207	2	D2151	8	K01521	12	RASU190515BK1	35	T6325	14
D0209	2	D2152	8	K01522	12	RASU190520BK1	35	T6938	15
D0210	2	D2155	8	K05501	12	RASV190115BK1	36	T6939	15
D0302	2	D2156	8	K05505	12	RASV190515BK1	36	T6944	15
D0303	2	D2157	8	K07501	12	RRCM44UD	35	T8864	15
D0304	2	D2161	8	K07502	12	SWCC1901021BK2	38		
D0305	2	D2162	8	K07504	12	T04740	17		

Other capabilities include the following:

Custom Cable Assemblies

Bulk Cable Assemblies

Flat Ribbon Cable Assemblies

Electro-Mechanical Assemblies

Coaxial Cable Assemblies

.8mm VHDCI Cable Assemblies

SCSI Cable Assemblies

Ultra SCSI Cable Assemblies

HSSI (High-Speed Serial Interface Assemblies)

RJ45 Patch Cable Assemblies

Cat 5E Patch Cable Assemblies

Cat 6 Patch Cable Assemblies

Network Cable Assemblies

V.24 Cable Assemblies

V.35 Cable Assemblies

Telco Cable Assemblies

Computer Cable Assemblies

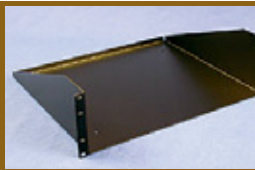
D-Sub Cable Assemblies

Molded Power Cords

OEM Cable Equivalents

Fiber Optic Cable Assemblies

Sub-Contract Manufacturing



An ISO 9000 Certified Company

Tevelec Limited
5350 Timberlea Blvd.
Mississauga, Ontario
Canada
L4W 2S6

Tel.: (905) 624-5241
Toll Free: 1-877-TEVELEC
Fax: (905) 625-2462
email: sales@tevelec.com

Visit us on the web at
www.tevelec.com

BELDEN
SENDING ALL THE RIGHT SIGNALS

M HAMMOND
MANUFACTURING™
W

G GREENLEE
A Teston Company

Paladin Tools

LEVITON