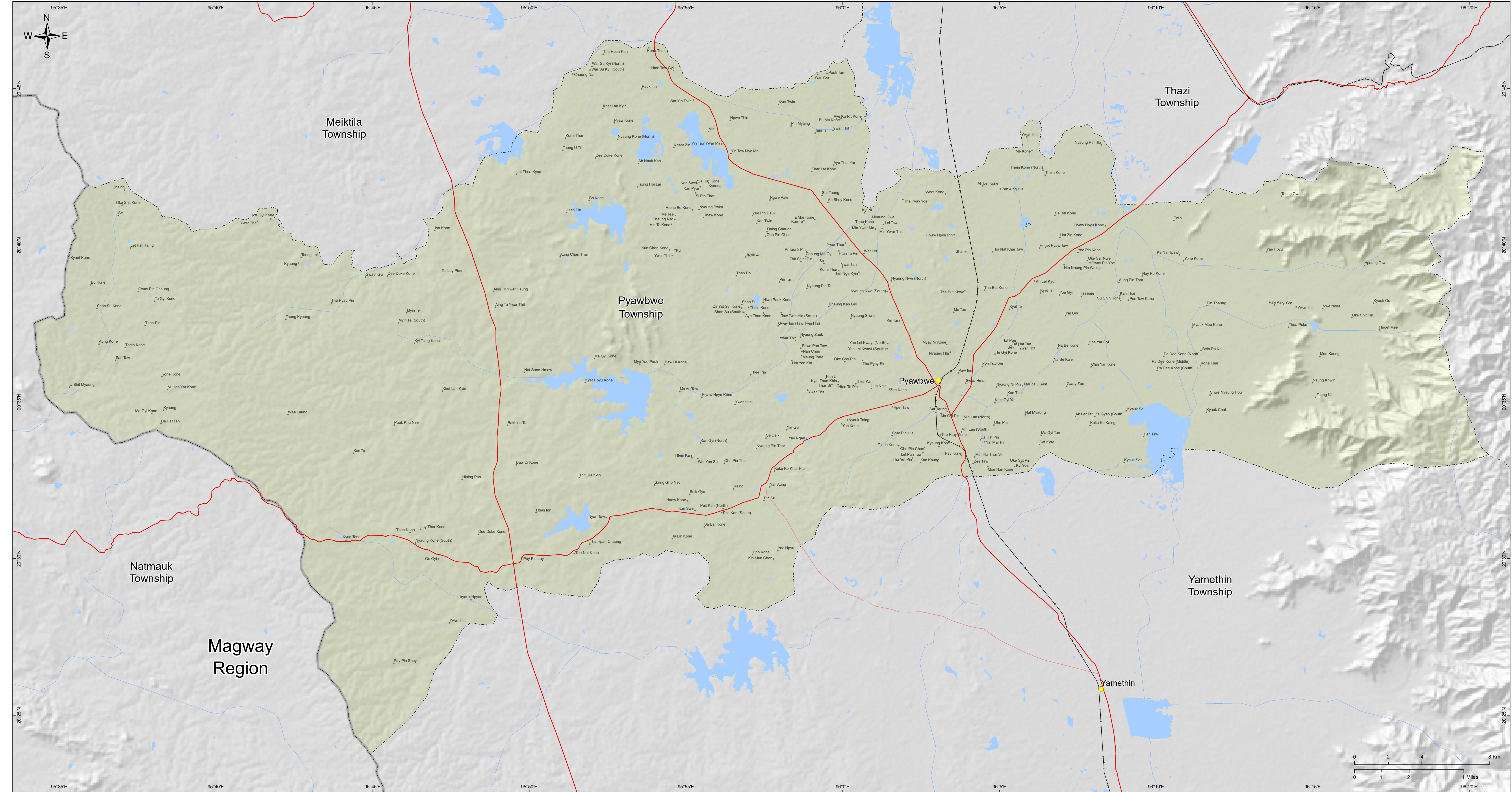




# Pyawbwe Township

## Mandalay Region, Myanmar



**Legend**

<b>Towns/ Village</b>	<b>Transportation</b>	<b>Boundary</b>	<b>Hydrography</b>
★ Union Capital	✈ Airport	- - - Township Boundary	— River and Stream
● State/Region Capital	— Rail Road	— State/Region Boundary	— Ocean
● Main Town	— Main Road	— International Boundary	
● Other Town	— Secondary Road		
● Village	— Tertiary Road		

**Map ID:** MIMU154v05  
**Production Date:** 20 April 2020  
**Paper Size:** A1  
**Projection/Datum:** Geographic/WGS84  
**Base map:** MIMU, OSM  
**Boundaries:** MIMU  
**Elevation:** MERIT DEM

Place Names: General Administration Department (GAD) and field sources. Place names on this product are in line with the general cartographic practice to reflect the names of such places as designated by the government concerned. Transliteration by MIMU. Some place names could not be displayed on this map due to space limitations.

The information contained on this product is provided "as is", for reference purposes only, based on current available information. The United Nations and the MIMU specifically do not make any warranties or representations as to the accuracy or completeness of such information nor does it imply official endorsement or acceptance by the United Nations. Please share updates on any errors or omissions via [maps@themimu.info](mailto:maps@themimu.info).

This map has been prepared for informational purposes only, to support humanitarian and development activities in Myanmar. It does not represent an on-ground survey. It represents only the approximate relative location of villages and boundaries. There is no warrant the data is either complete or accurate.

The Myanmar Information Management Unit / MIMU is a service of the Office of the UN Resident and Humanitarian Coordinator to support the information management needs and decision-making of humanitarian, development and peace-focused actors across Myanmar.

© 2020 Myanmar Information Management Unit. MIMU products are not for sale and can be used free of charge with attribution. For more information see <http://themimu.info/mimu-terms-conditions>. This notice cannot be modified or removed.  
 Email: [info.mimu@undp.org](mailto:info.mimu@undp.org) Website: [www.themimu.info](http://www.themimu.info)

**Disclaimer:** The boundaries and the names shown and the designations used on this map do not imply official endorsement or acceptance by the United Nations.

