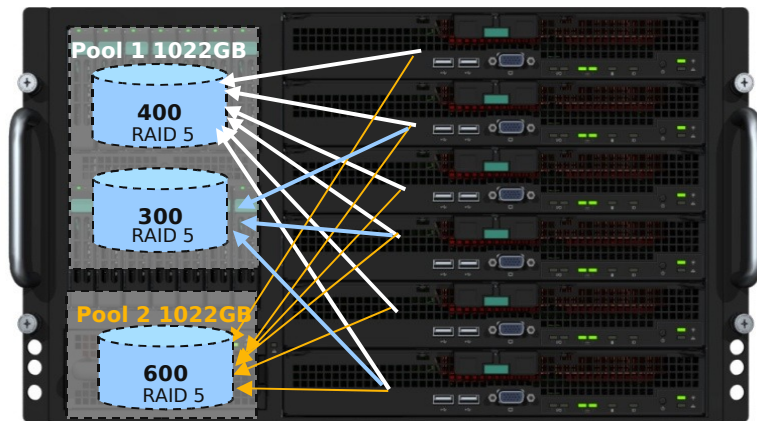


What is Intel® Shared LUN upgrade?

Enable running advanced Virtualization and High-Availability Clusters on Modular Server without an external storage system

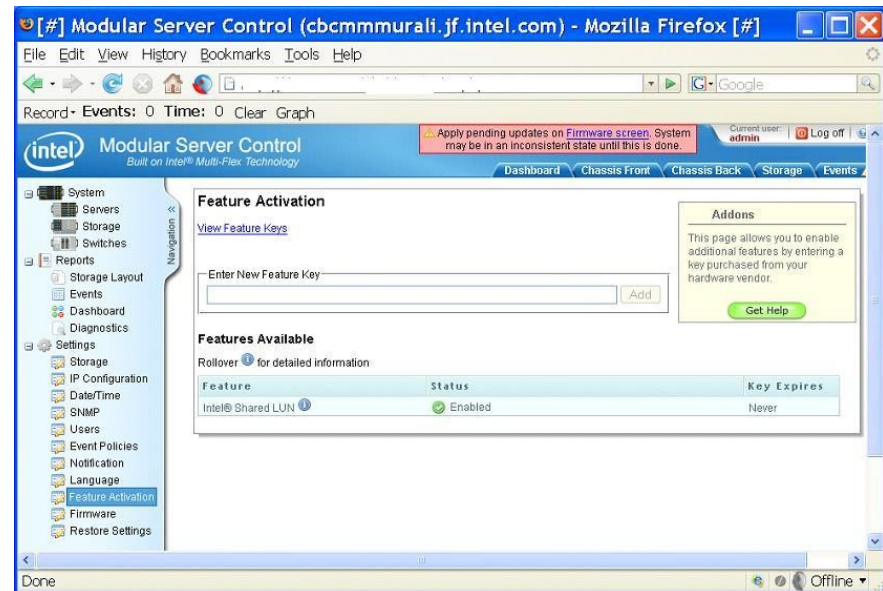
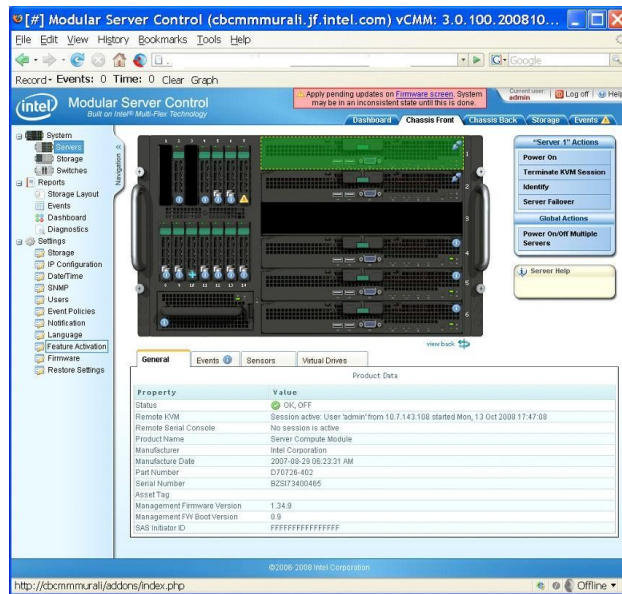


- Features:
 - > Each Virtual Drive can be mapped up to 6 compute modules
 - > Simple Point & Click configuration with IMS server control GUI
- Benefits:
 - Single Box solution for advanced Virtualization and HA Clusters
 - > VMware ESX HA, Vmotion, DRS
 - > Microsoft Windows Server Clusters
 - > Linux Server Clusters

- 1. One box solution! No external SAN storage required!!**
- 2. Single point and simple IMS server control GUI for Intel® Shared LUN activation, configuration and server management!!!**

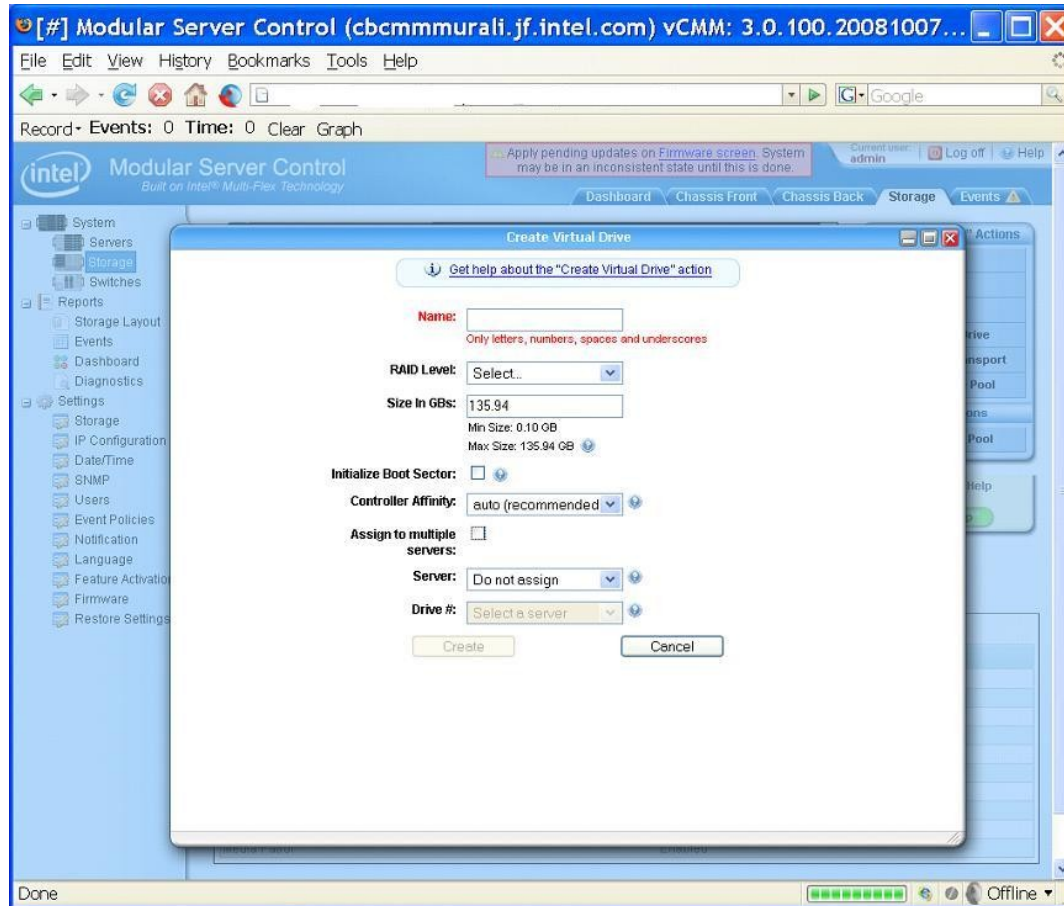
Details to activate Intel® Shared LUN

- Log in the Intel® Modular Server Control GUI
- Click on the Feature Activation link and enter the license key in the Enter New Feature Key box and click on Add to enable the feature



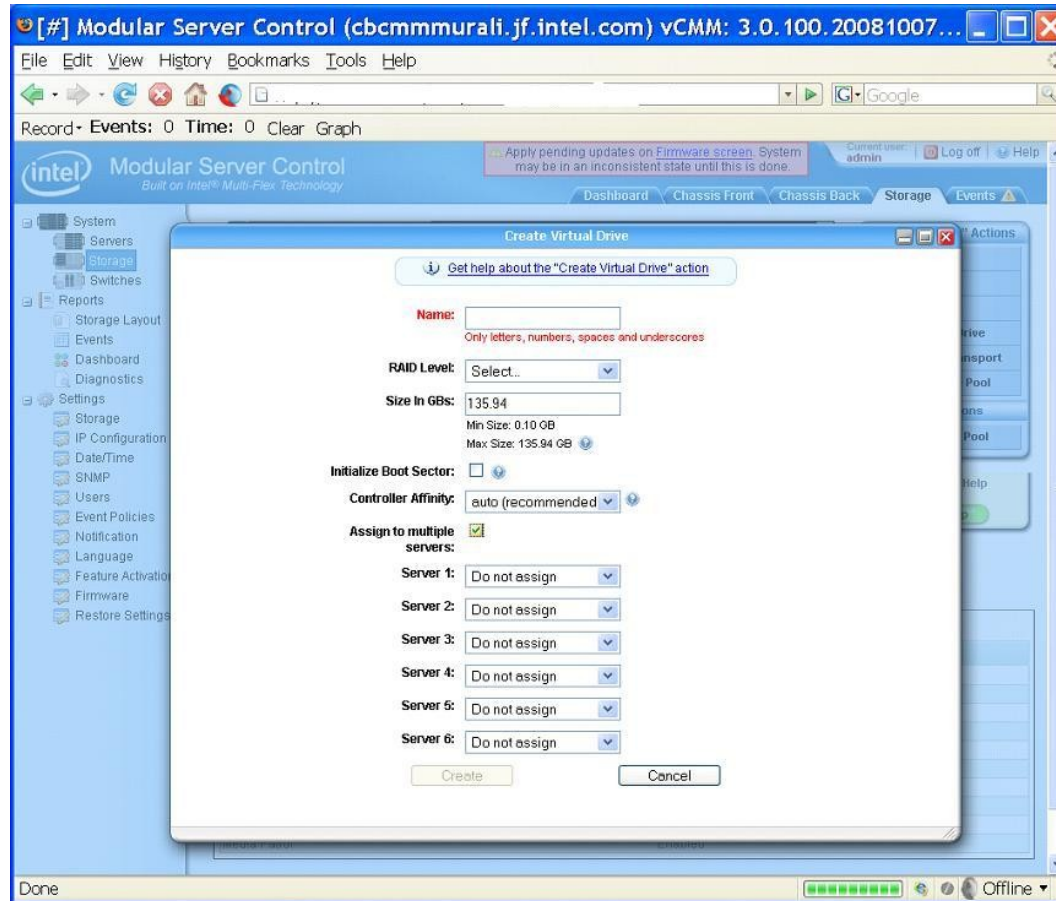
How to share LUN with multiple servers (1)

Check “Assign to multiple servers” box



How to share LUN with multiple servers (2)

Select multiple servers to assign



How to share LUN with multiple servers (3)

A virtual drive is assigned to more than one server.

Move mouse over the virtual drive to see the servers that are assigned to

Record - Events: 0 Time: 0 Clear Graph

Apply pending updates on Firmware screen. System may be in an inconsistent state until this is done.

Current user: admin Log off Help

Dashboard Chassis Front Chassis Back Storage Events

Navigation: System, Servers, Storage, Switches, Reports, Storage Layout, Events, Dashboard, Diagnostics, Settings, Storage, IP Configuration, Date/Time, SNMP, Users, Event Policies, Notification, Language, Feature Activation, Firmware, Restore Settings

Web Server 1 271.94 GB

- vd1 10GB RAID1E Server 2 Drive 110
- vd2 10GB RAID0 Server 6 Drive 1
- one 1GB RAID1 Server 2 Drive 0
- two 1GB RAID1 Server 2 Drive 1
- MySQL 14 36GB RAID1 Assigned to...
- jacksonte... 10GB RAID1 Assigned to...
- test 2GB RAID1E Not assigned
- trying 1GB RAID1 Not assigned
- Unallocated 135.94 GB

Assigned to:

- Server 2 Drive 5
- Server 6 Drive 4

test 135.97 GB

“Web Server 1” Actions

- Rename
- Delete
- Identify
- Create Virtual Drive
- Prepare For Transport
- Expand Storage Pool
- Global Actions
- Create Storage Pool

Storage Pool Help Get Help

General Events Physical Drives Virtual Drives Spares Background Tasks

Storage Pool Properties

Property	Value
Status	OK
Name	Web Server 1
ID	B2C1320400000000
Total Managed Space	271.94GB
Total Unallocated Space	135.94GB
Max Contiguous Space	135.94GB
Number Of Drives	2
Number of Virtual Drives	8
Predictive Data Migration	Enabled
Media Patrol	Enabled

Done Offline

How to share LUN with multiple servers (4)

Clicking unassign will cause the dialogue box shown below to pop up

Modular Server Control (cbcmurali.jf.intel.com) vCMM: 3.0.100.20081007....

File Edit View History Bookmarks Tools Help

Record- Events: 0 Time: 0 Clear Graph

Apply pending updates on Firmware screen. System may be in an inconsistent state until this is done.

Current user: admin Log off Help

Dashboard Chassis Front Chassis Back Storage Events

System Servers Storage Switches Reports Storage Layout Events Dashboard Diagnostics Settings Storage IP Configuration Date/Time SNMP Users Event Policies Notification Language Feature Activation Firmware Restore Settings

Web Server 1 271.94 GB

vd1 10GB RAID1E Server 2 Drive 110

vd2 10GB RAID0 Server 6 Drive 1

one 1GB RAID1 Server 2 Drive 0

two 1GB RAID1 Server 2 Drive 1

MySQL 14 2GB RAID1 Assigned to...

jacksontest... 10GB RAID1 Assigned to...

test 2GB RAID1E Not assigned

trying 1GB RAID1 Not assigned

Unallocated 135.94 GB

test 135.97 GB

"jacksontest" Actions

- Assign
- Delete
- Rename
- Expand
- Initialize Boot Sector
- Change Affinity
- Clone Virtual Drive
- Global Actions
- Create Storage Pool

Virtual Drive Help

Get Help

General Events Background Tasks

Virtual Drive Properties

Property	Value
Status	OK
Name	jacksontest
ID	226700155F238AE
Size	10.00GB
RAID Level	RAID1
Affinity/Active	SCM 2/SCM 1

Assigned to	Drive Number
Server 2	5
Server 6	4

©2006-2008 Intel Corporation

Done Offline

How to share LUN with multiple servers (5)

Unassign Servers from the unassign dialog box
A pop up screen below will show up

