

CITY OF SNEEDVILLE



SR 33 / Main Street Complete Streets Plan

September 2019



U.S. Department
of Transportation
**Federal Highway
Administration**



TDOT
Department of
Transportation



KCI
TECHNOLOGIES

Table of Contents

CHAPTER 1 - INTRODUCTION	3
Study Background and Need	3
Study Purpose	4
Planning Process.....	4
CHAPTER 2 - EXISTING CONDITIONS	5
Sneedville	5
Overview	5
Demographics	6
Employment and Commuting Characteristics	7
Study Corridor	9
Overview	9
Functional Classification	11
Traffic Volumes.....	11
Crash History	13
Land Use.....	16
Non-Motorized Network	18
CHAPTER 3 - RECOMMENDATIONS	20
Recommended Near-Term Improvements	21
Bulb-Outs.....	21
Crosswalks	23
Recommended Long-Term Improvements.....	24
Recommended Improvement Cost Estimates	31
CHAPTER 4 - CONCLUSION	36
APPENDIX A - PUBLIC ENGAGEMENT	37

List of Tables

Table 1 Crash Types and Severity (Past 10 Years).....	13
Table 2 Land Use Acreage for Parcels with Corridor Frontage.....	16
Table 3 Recommended Improvement Cost Estimates	31

List of Figures

Figure 1 Planning Process Schedule	4
Figure 2 Location of Sneedville, Tennessee.....	5
Figure 3 Sneedville Demographics	6
Figure 4 Job and Worker Locations within Sneedville	8
Figure 5 Study Corridor and Key Destinations.....	9
Figure 6 Example Cross-Sections Along the Existing Corridor	10
Figure 7 Roadway Functional Classification and General Characteristics.....	11
Figure 8 Roadway Functional Classification and Traffic Volumes.....	12
Figure 9 Crash Type (Past 10 Years)	14
Figure 10 Crash Severity (Past 10 Years)	15
Figure 11 Land Use.....	17
Figure 12 Travel Times by Alternate Modes of Travel	18
Figure 13 Sidewalk Network.....	19
Figure 14 Bulb-Out Design Guidance.....	22
Figure 15 Typical TDOT Crosswalk Designs.....	23
Figure 16 Alternate Crosswalk Striping Design Guidance	23
Figure 17 Walnut Avenue / Newman Street Intersection	24
Figure 18 Long-Term Improvement Figure Key	24
Figure 19 Long-Term Vision for SR 33 / Main Street Cross-Section in Downtown Sneedville	25
Figure 20 Section A Recommended Long-Term Improvements.....	26
Figure 21 Section B Recommended Long-Term Improvements	27
Figure 22 Section C Recommended Long-Term Improvements	28
Figure 23 Section D Recommended Long-Term Improvements.....	29
Figure 24 Section E Recommended Long-Term Improvements	30

CHAPTER 1 - INTRODUCTION

Transportation plays a critical role in a community’s livability and economic vitality. A seamless transportation network, whether driving, walking, or biking, provides residents access to jobs, health care, educational opportunities, entertainment, goods, and other resources. Safe and convenient opportunities to walk and bike to community destinations provides further value to the community as it relates to affordability, public health (physical activity), senior resident independence, and civic engagement, to name a few.

Study Background and Need

Sneedville Tennessee’s Main Street corridor is also a state route facility, State Route (SR) 33. Shaped by the nearby steep ridges, SR 33 / Main Street acts as the backbone to the community’s roadway network. Within the past 10 years, the City of Sneedville received a grant to complete a sidewalk connection that connects the majority of the town’s population with the Hancock County Middle/High School, which is located approximately 1.5 miles east of the town center. With this key connection completed, Sneedville’s focus turned to the western portion of SR 33 / Main Street where the majority of the town’s population is located. While a sidewalk network exists, it is aging, contains gaps, and in some locations, is not compliant with the American Disabilities Act of 1990 and the Public Rights-of-Ways Accessibility Guidelines (ADA/PROWAG) guidance. Marked crosswalks across SR 33 / Main Street are limited. Furthermore, worn on-street parking striping and unmarked, haphazard off-street parking creates conflict points for pedestrians and cyclists as they navigate around parked vehicles, sometimes in the travel lane, along the corridor.



Above, open frontage for private businesses create safety concerns for pedestrians and cyclists along this stretch of SR 33 / Main Street where there is no sidewalk connection and vehicular movements are not clearly defined.



The photo to the right illustrates an example of existing curb ramps along SR 33 / Main Street (at the intersection with Court Street) which are not ADA/PROWAG-compliant.

With a goal of improving multimodal accessibility and safety, as well as vehicular operations along the community’s Main Street corridor, the City pursued a Community Transportation Planning Grant (CTPG) through the Tennessee Department of Transportation (TDOT) in order to develop a complete streets plan. The CTPG assists rural communities across the state in planning efforts that support a safer and more efficient transportation system, particularly where critical local and state infrastructure overlap (i.e., state routes). As described on TDOT’s website, the core goals of the program mirror those expressed by the community. These include:

- “[T]ransportation cohesiveness between multimodal transportation systems and local land use objectives that achieve the statewide transportation goals”
- “[I]mprovements to the transportation system that support improvements in traffic flow, safety, and overall efficiency of the transportation system”
- Promotion of economic growth by achieving community visions relating to transportation and land use needs



Study Purpose

The purpose of the SR 33 / Main Street Complete Streets Plan is to document existing conditions within the community, specifically as it relates to the transportation network, understand the movements and needs of various users along the study corridor, and identify implementable, cost-effective improvements for achieving a more complete street. The ultimate long-term vision for the corridor will be achieved through a combination of routine TDOT resurfacing projects, municipal efforts (using grant funding), development/redevelopment opportunities, and/or through targeted economic development efforts. Planning-level cost estimates for recommended improvements as well as basic design guidance are also provided within this document.

Planning Process

As illustrated in Figure 1, the plan development process began with an initial kick-off meeting with the project team in December 2018 where scope tasks were refined, and a project schedule was established. The project team included representatives from the Town of Sneedville, the First Tennessee Rural Planning Organization (RPO), TDOT, the Tennessee Department of Health’s Office of Primary Prevention, and TDOT’s consultant team, KCI Technologies, Inc. The project team communicated at key milestones throughout the plan’s development to gather critical information on the community’s needs as well as ensure tasks were completed as outlined and on schedule. Results from the community online survey may be found in Appendix A.

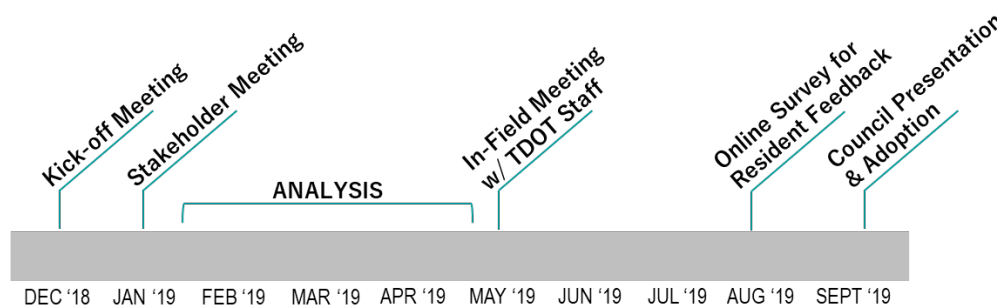


Figure 1 Planning Process Schedule

CHAPTER 2 - EXISTING CONDITIONS

This section highlights important existing conditions along the corridor and within the greater community that are relevant to the transportation planning process. This includes information regarding community demographics, land use patterns, and the transportation network. Information gleaned from these analyses will help inform the plan’s recommendations.



Sneedville Overview

Sneedville is located within TDOT Region 1 in northeastern Tennessee, as shown in Figure 2. It is the county seat of Hancock County, one of the state’s smallest counties in terms of population. The county is one of Tennessee’s 15 counties that is categorized as ‘economically distressed’ by the Appalachian Regional Commission (ARC), meaning it is among the top 10% of most distressed counties in the U.S. A transportation system that is safe, convenient, and attractive is, therefore, especially critical for Sneedville. Being able to access jobs and resources safely and efficiently, especially by foot or by bike, is paramount for residents.

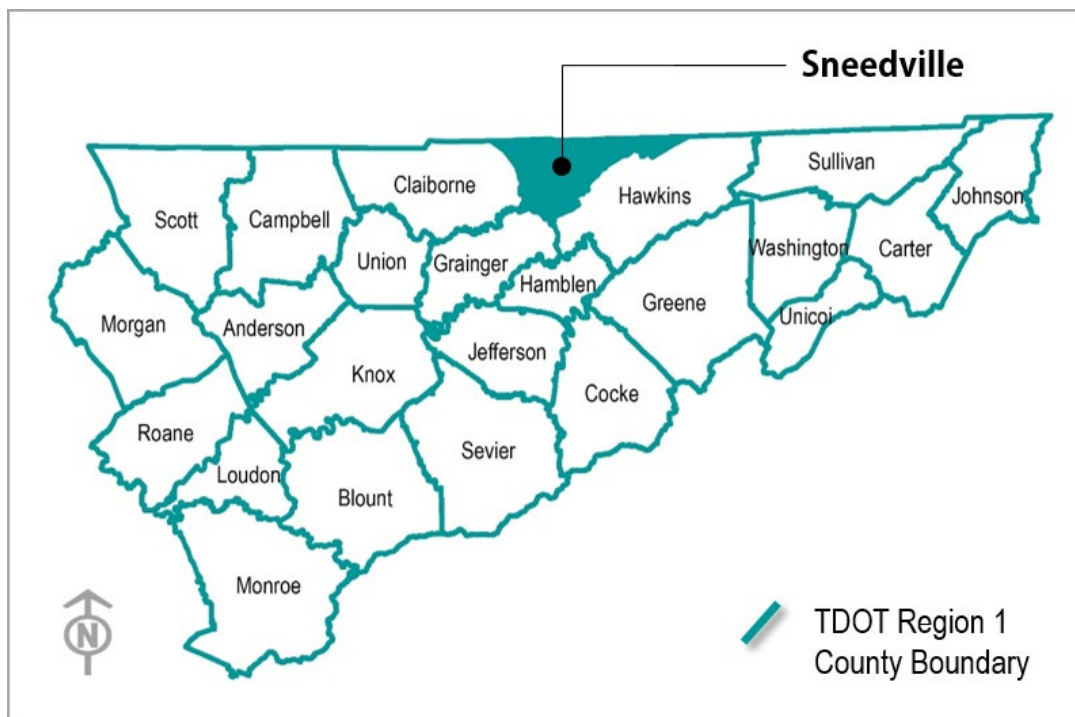


Figure 2 Location of Sneedville, Tennessee

Demographics

Demographic information, i.e., characteristics about the community’s population, is important when planning transportation facilities. This helps to create a general understanding of the varying types of needs from the spectrum of transportation users in a community. Information contained within this section is sourced from the U.S. Census Bureau’s American Community Survey (ACS) 2017 Five-Year Estimates which is highlighted in Figure 3. These numbers are estimates based on 2010 Census numbers.

In 2017, Sneedville had an estimated population of 1,347, which was roughly 20% of Hancock County’s overall estimated population that year. The number is slightly down as compared to the actual count from the 2010 Census which identified Sneedville’s population at 1,387. The median age of Sneedville’s residents was 35.5, which was slightly younger than the statewide average, but considerably younger than that of the greater county (44.6). Approximately 26% of residents were younger than 18 years old, while 16% of residents were 65 years and older. That equates to almost 570 residents whom may not own or drive a vehicle and/or may chose not to drive.

Sneedville residents had an estimated median household income of \$21,264, almost half that of the statewide average. This equates to approximately 46% of residents, or 620 individuals, living below the poverty line in 2017. Being able to walk or bike around the community for these residents is especially critical. A safe and seamless transportation system in Sneedville not only allows these residents to access key goods and services, but it also provides safe walking and biking opportunities for those vulnerable road users, children, adolescents, and seniors.

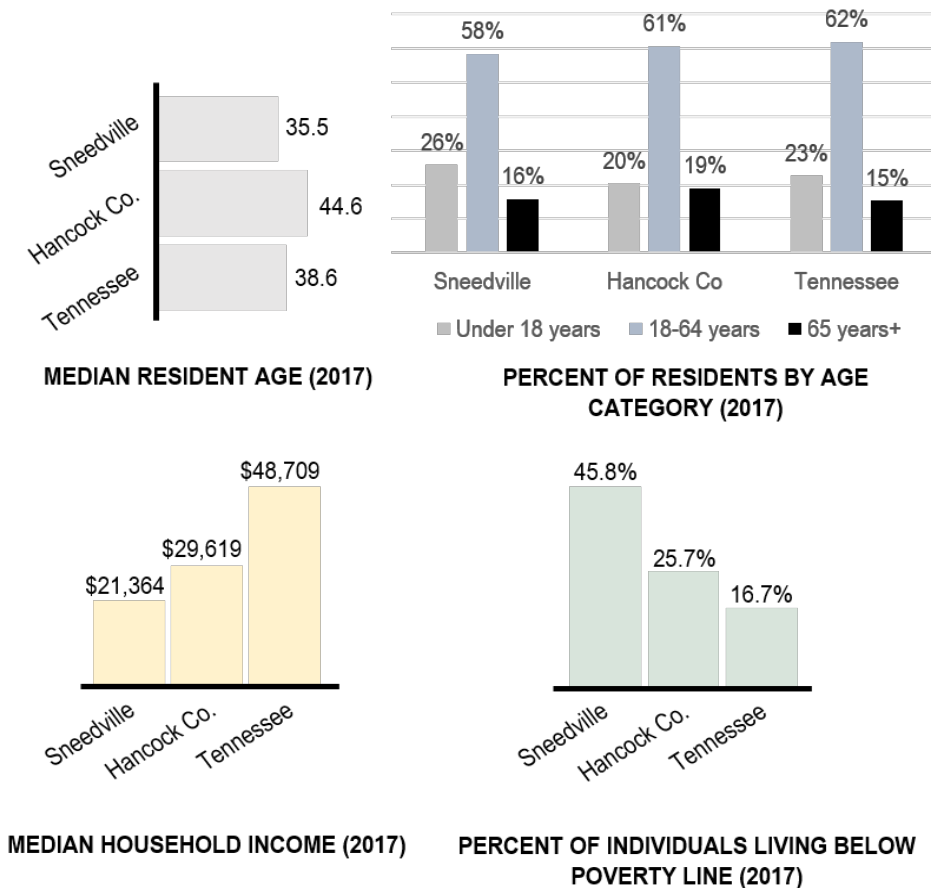


Figure 3 Sneedville Demographics

Employment and Commuting Characteristics

OnTheMap is a web-based mapping application that displays where workers live and where they are employed. The application is offered through the U.S. Census Bureau's Longitudinal Employer-Household Dynamics (LEHD) Program's 2015 Origin-Destination Employment Statistics (LODES). The application allows users to understand where employed Sneedville residents work within the community, as well as where employees that work within Sneedville live. General travel patterns between home and work destinations are illustrated in the application.

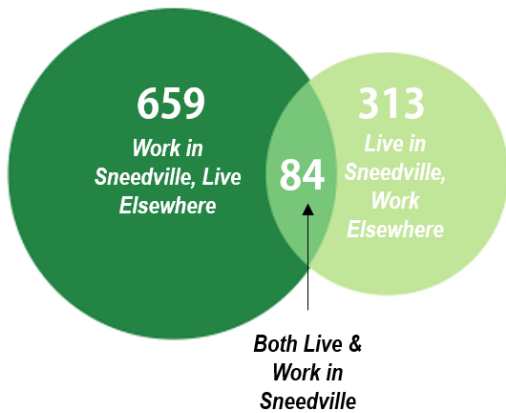
Figure 4 details OnTheMap output for the community of Sneedville. In 2015, there were 743 filled jobs located within the municipal limits, while 397 employed workers lived in Sneedville during that time. 84 individuals both lived and worked in Sneedville. The top three job types by industry sector in the community in 2015 included Educational Services, Health Care and Social Assistance, and Retail Trade. A little over half (54.4%) of these workers traveled less than 10 miles to get to their place of employment with a majority traveling from the northeast direction. For Sneedville residents that are employed, the majority work in the Manufacturing industry sector with the greatest amount of residents traveling generally to the southwest from their home to their place of employment. Approximately 80% of Sneedville residents commute outside of the municipal limits for their job. Retail Trade and Health Care and Social Assistance round out the top three industry sectors in which employed Sneedville residents work.



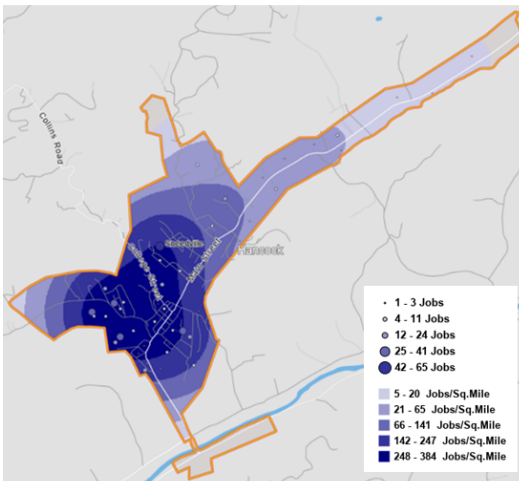
All types of modes and vehicle types use the SR 33 / Main Street corridor, including delivery and tanker trucks, farm equipment, motorcyclists, demand-response transit vehicles, school buses, and bicycles.



Inflow / Outflow Commuting Characteristics



Job Locations



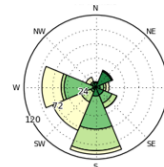
Total Number of Filled Jobs in Sneedville:
743

Top 3 Job Types by NAICS Industrial Sector for Jobs Located in Sneedville:

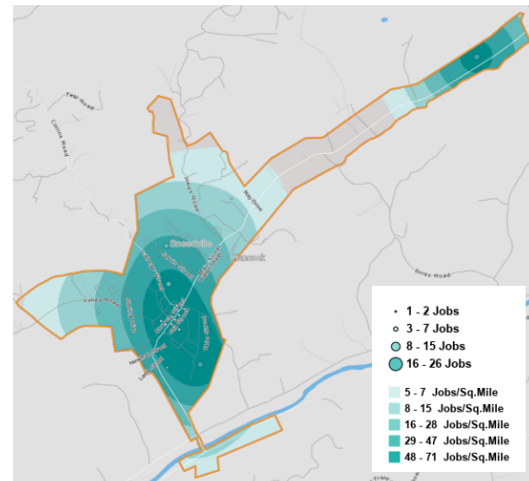
- 1) Educational Services (24.6%)
- 2) Health Care & Social Assistance (18.3%)
- 3) Retail Trade (15.2%)

Distance & Direction to Home Place

Employed Workers:	Count	Share
Less than 10 miles	743	100.0%
10 to 24 miles	404	54.4%
25 to 50 miles	147	19.8%
Greater than 50 miles	112	15.1%
	80	10.8%



Worker Locations



Total Number of Employed Workers Living in Sneedville:
397

Top 3 Job Types by NAICS Industrial Sector for Workers Living in Sneedville:

- 1) Manufacturing (21.2%)
- 2) Retail Trade (13.1%)
- 3) Health Care & Social Assistance (12.8%)

Distance & Direction to Work Place

Employed Residents:	Count	Share
Less than 10 miles	397	100.0%
10 to 24 miles	88	22.2%
25 to 50 miles	135	34.0%
Greater than 50 miles	72	18.1%
	102	25.7%

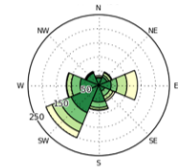


Figure 4 Job and Worker Locations within Sneedville

Study Corridor Overview

As previously described, this Plan focuses upon the western portion of SR 33 / Main Street (highlighted in Figure 5) given the critical role this corridor plays for a majority of movements within and through Sneedville. Study termini include Satterfield Street to the northeast and Cemetery Street to the southwest. The community’s development pattern and transportation network is molded by the ridge-valley topography, which characterizes the region. Given the size of the community and proximity of destinations, this results in an environment conducive for walking and biking. Key destinations are identified to establish a general understanding of the direction and demand of travel movements within the community.

SR 33 / Main Street is a two-lane facility for the length of the study section. Figure 6 illustrates the two predominant cross-sections along the corridor. Lane width varies between 10 and 11 feet. The presence of a shoulder also varies ranging from a one to two-foot paved shoulder to striped on-street parallel parking in the downtown core. In some instances within the downtown, the paved shoulder tapers into open business frontage. The posted speed limit along the study corridor is 30 mph.

The remainder of this section highlights existing conditions and performance of the transportation network within the area of the study corridor, including roadway functional classification, traffic volumes, crash history, land use, as well as the existing and proposed non-motorized network (sidewalks). This information establishes the foundation upon which the recommendations of this plan are identified.

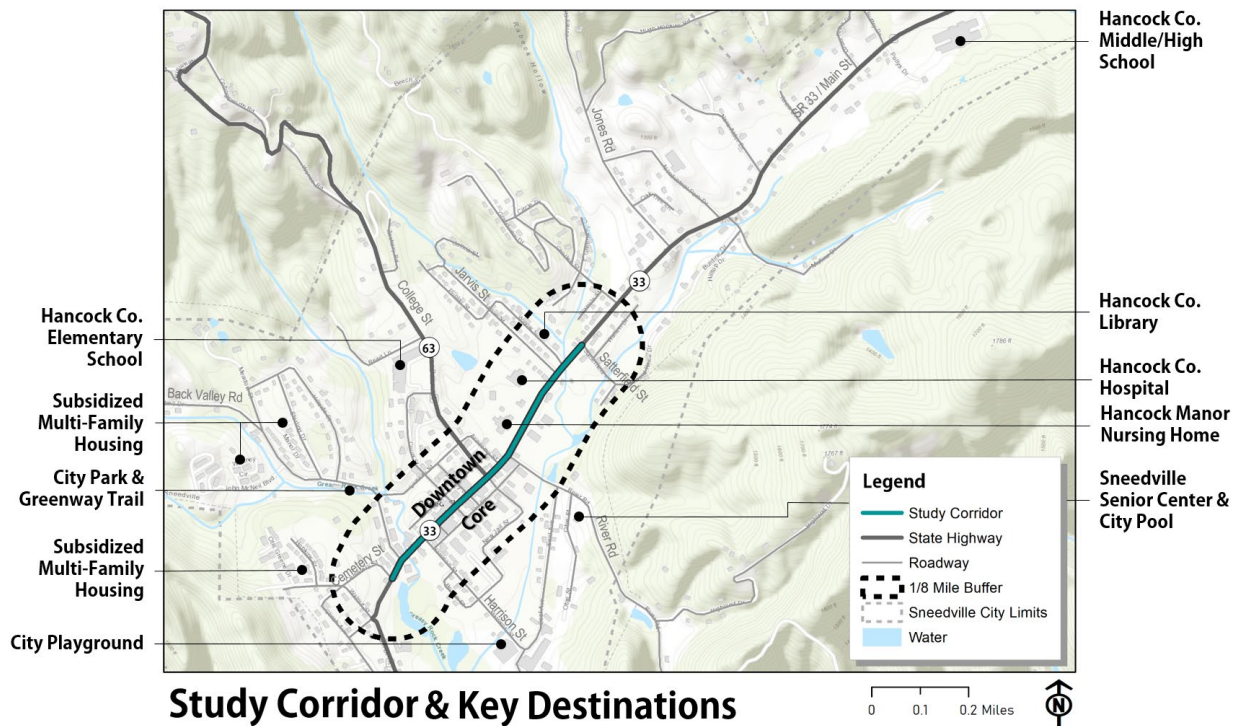


Figure 5 Study Corridor and Key Destinations

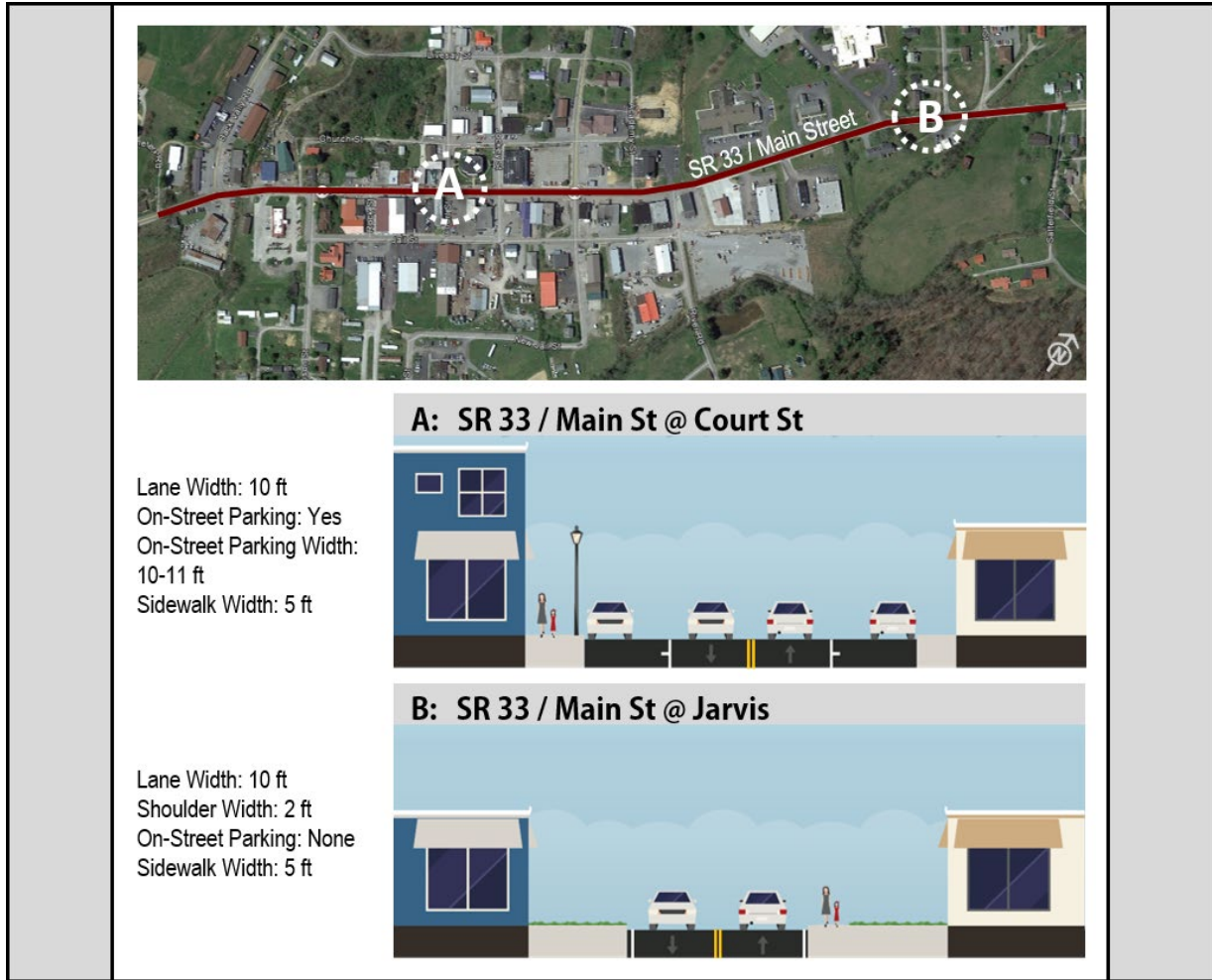


Figure 6 Example Cross-Sections Along the Existing Corridor



This portion of SR 33 / Main Street (near the Post Office) illustrates an example of where the paved shoulder tapers into private business parking areas.

Functional Classification

Functional classification describes the role a roadway plays within the greater hierarchical transportation system – whether providing for more long-distance trips, shorter distance trips, or a combination of both. Classification informs roadway design and determines eligibility for Federal-Aid funding. This hierarchy of classifications is similar in concept to waterbodies within a watershed in that arterials carry the highest traffic volumes, collectors carry a moderate amount, and local streets carry the least amount of traffic. Figure 7 further describes the general levels within the roadway functional classification system.

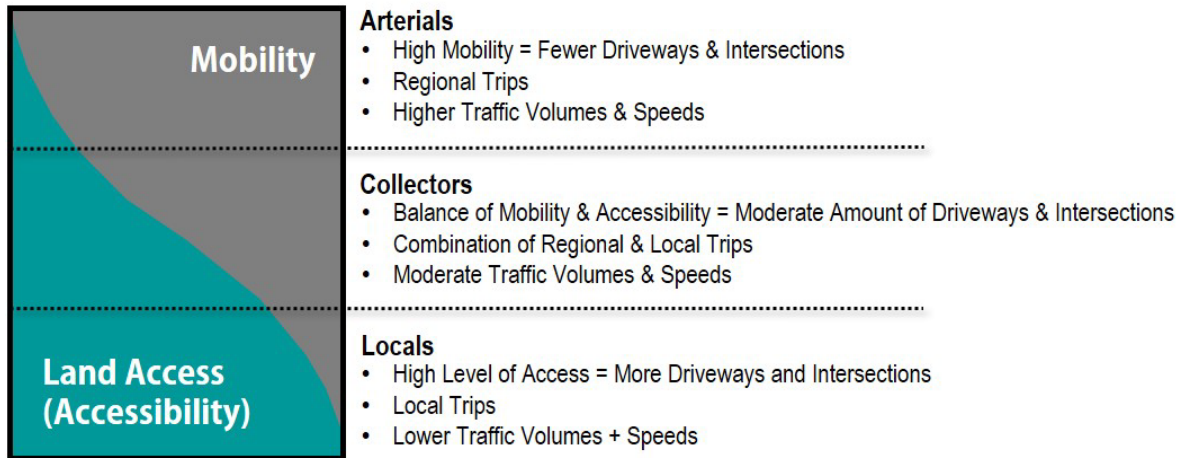
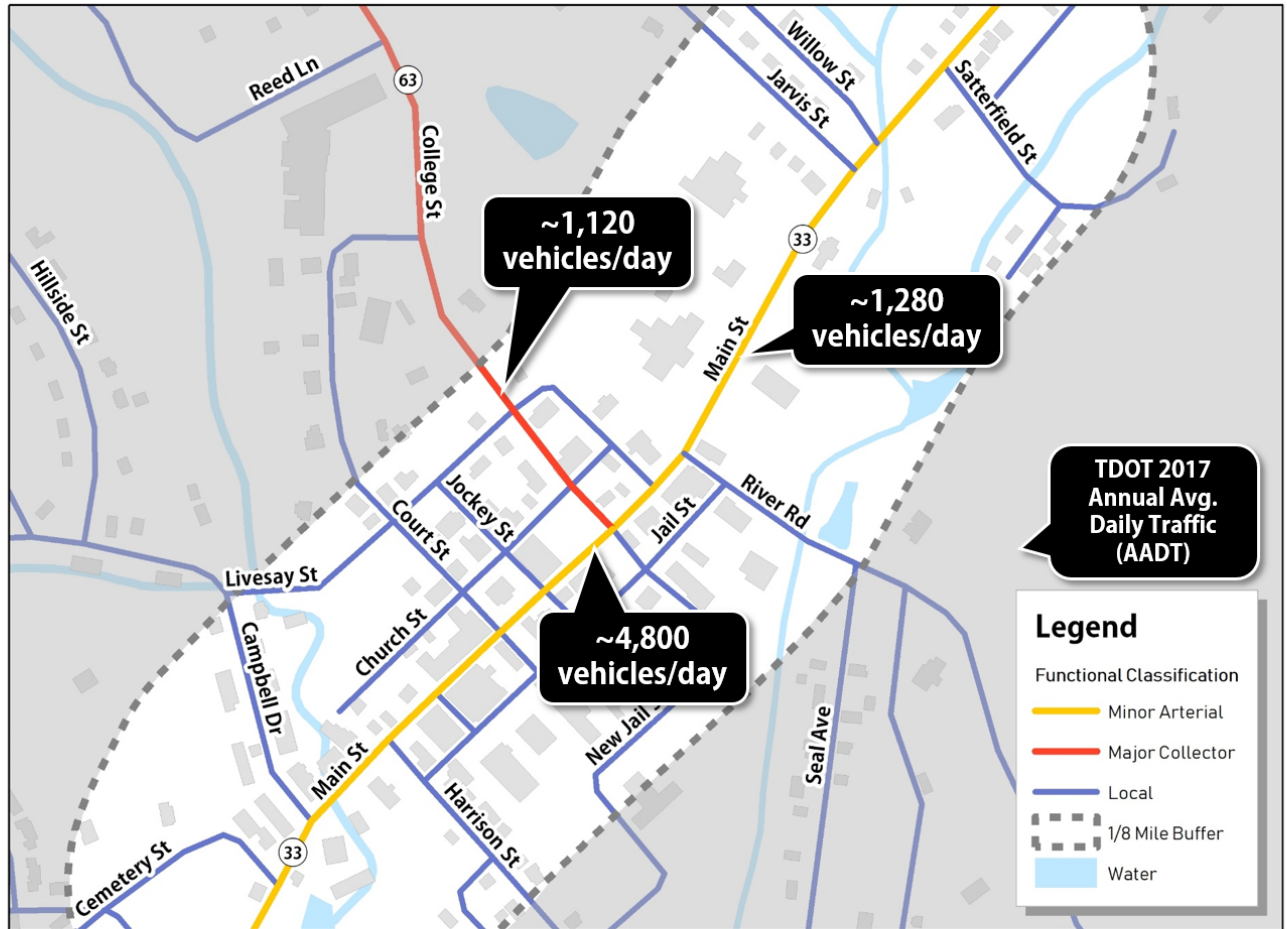


Figure 7 Roadway Functional Classification and General Characteristics

Figure 8 illustrates the functional classification of the roadway network within the area of the study corridor. This information assists in understanding traffic patterns that, in turn, assists in the identification of recommended safety and operational improvements. SR 33 / Main Street is classified as a Minor Arterial and provides east-west connectivity across the county to communities including Kyles Ford and Xenophone and ultimately, Dixie Highway to the southwest in Claiborne County. SR 63 / College Street is classified as a Major Collector and provides north-south connectivity within the county. SR 63 / College Street directly connects to the study corridor near the Post Office. The remainder of the roadways within the study area are classified as local streets. In the downtown area, local streets parallel to the study corridor provide excellent lower volume alternatives for pedestrians and cyclists traveling east-west in the area.

Traffic Volumes

Annual average daily traffic (AADT) for both state routes is also noted in Figure 8. TDOT collects a yearly traffic volume sample at thousands of count stations across the state for monitoring purposes. SR 63 / College Street and the study corridor north of SR 63 / College Street both have relatively similar volumes, approximately 1,200 vehicles per day on average. The heaviest volumes are found along SR 33 / Main Street south of College Street (which includes the downtown core), with approximately 4,800 vehicles per day reflecting the number of destinations that are accessible off of SR 33 / Main Street. While not functionally classified, Campbell Drive/Back Valley Road provides important connectivity to and from Sneedville. Three of the five multifamily complexes in Sneedville are also located off of this roadway.



Roadway Network



Figure 8 Roadway Functional Classification and Traffic Volumes

Crash History

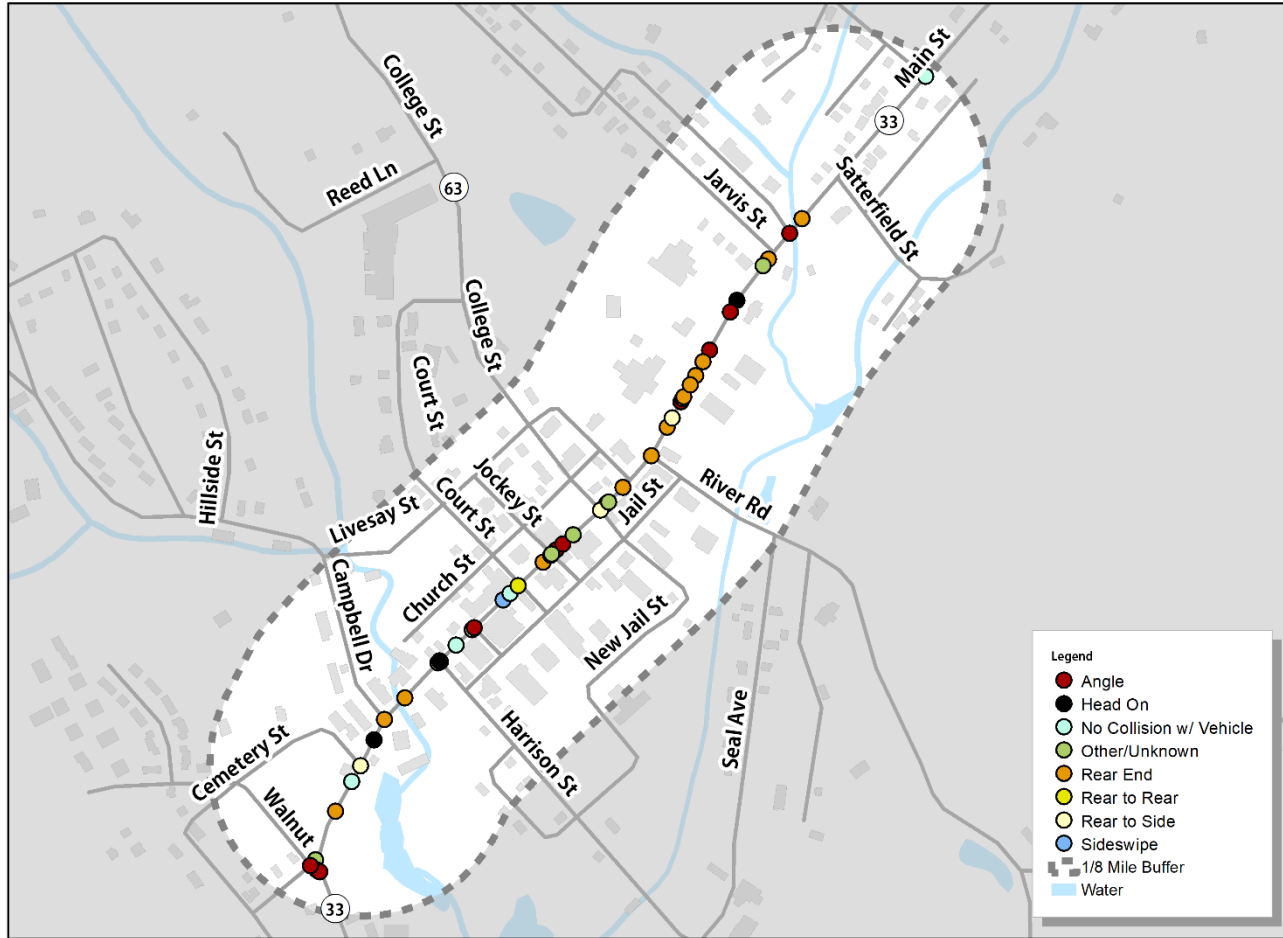
Ten-years of crash data, pulled from TDOT’s Enhanced Tennessee Roadway Information Management System (eTRIMS), was evaluated for the study corridor. The timeframe analyzed includes February 2009 through February 2019. eTRIMS pulls crashes directly from the Tennessee Department of Safety and Homeland Security’s Tennessee’s Integrated Traffic Analysis Network (TITAN), which consolidates all crash reports submitted by law enforcement agencies from across the state.

Within the 1/8 mile buffer area, there were 84 crashes reported to the police over the past 10 years. Figure 9 illustrates these crashes by type while Table 1 describes the number and percentage of each crash type. Rear end and angle collisions make up the greatest percentage of crash types. Furthermore, Figure 10 illustrates the locations of the fatal as well as serious and minor injury crashes along the corridor. The fatal crash involved a single vehicle leaving the roadway and hitting a tree, while the two suspected serious injury crashes were an angle and rear end crash. The majority of the suspected minor injury crashes were due to rear end collisions.

For this segment of the highway (~0.86 miles), the crash rate is 5.58. According to TDOT’s *Statewide Average Crash Rates for Sections and Spots* summary document from the Highway Safety Improvement Program (HSIP) 2014-2016 Study, the average crash rate for a rural state route facility that has two or three lanes is 1.647. Sneedville’s higher crash rate is likely attributed to the urban environment, i.e., there are a greater number of driveways and intersections along the roadway facility thus increasing the number of conflict points along the corridor. There were no reported crashes involving pedestrians or cyclists within the 1/8 mile buffer area within the past 10 years.

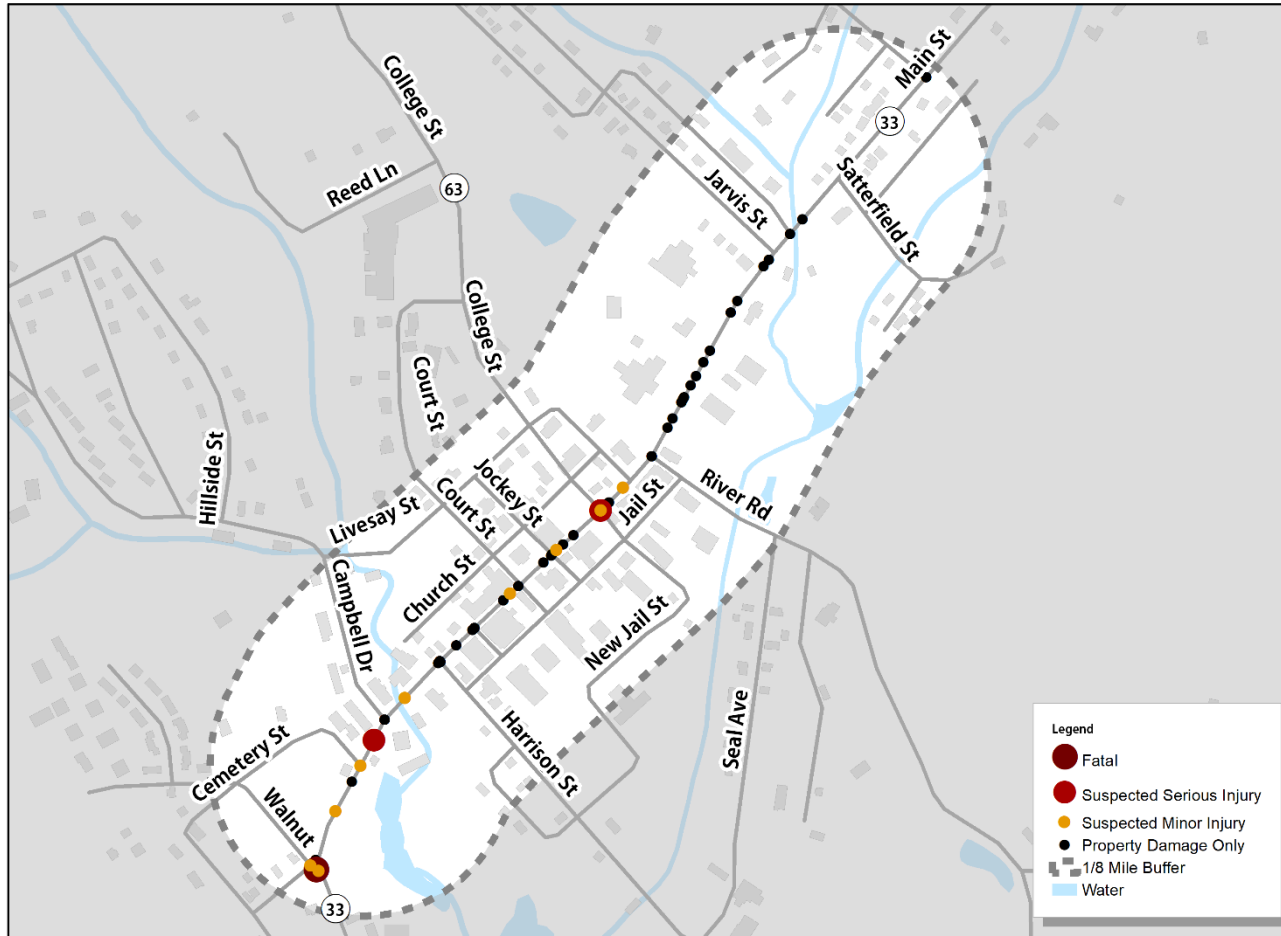
Table 1 Crash Types and Severity (Past 10 Years)

Crash Type	Number	% of Total
Angle	27	32.1%
Head On	3	3.6%
No Collision with Vehicle	6	7.1%
Other/Unknown	8	9.5%
Rear End	32	38.1%
Rear to Rear	1	1.2%
Rear to Side	5	6.0%
Sideswipe	2	2.4%
Total	84	100%
Crash Severity	Number	% of Total
Fatal	1	1.2%
Suspected Serious Injury	2	2.4%
Suspected Minor Injury	10	11.9%
Property Damage (High)	63	75.0%
Property Damage (Low)	8	9.5%
Total	84	100%



Crash Type (Past 10 Years)

Figure 9 Crash Type (Past 10 Years)



Crash Severity (Past 10 Years)

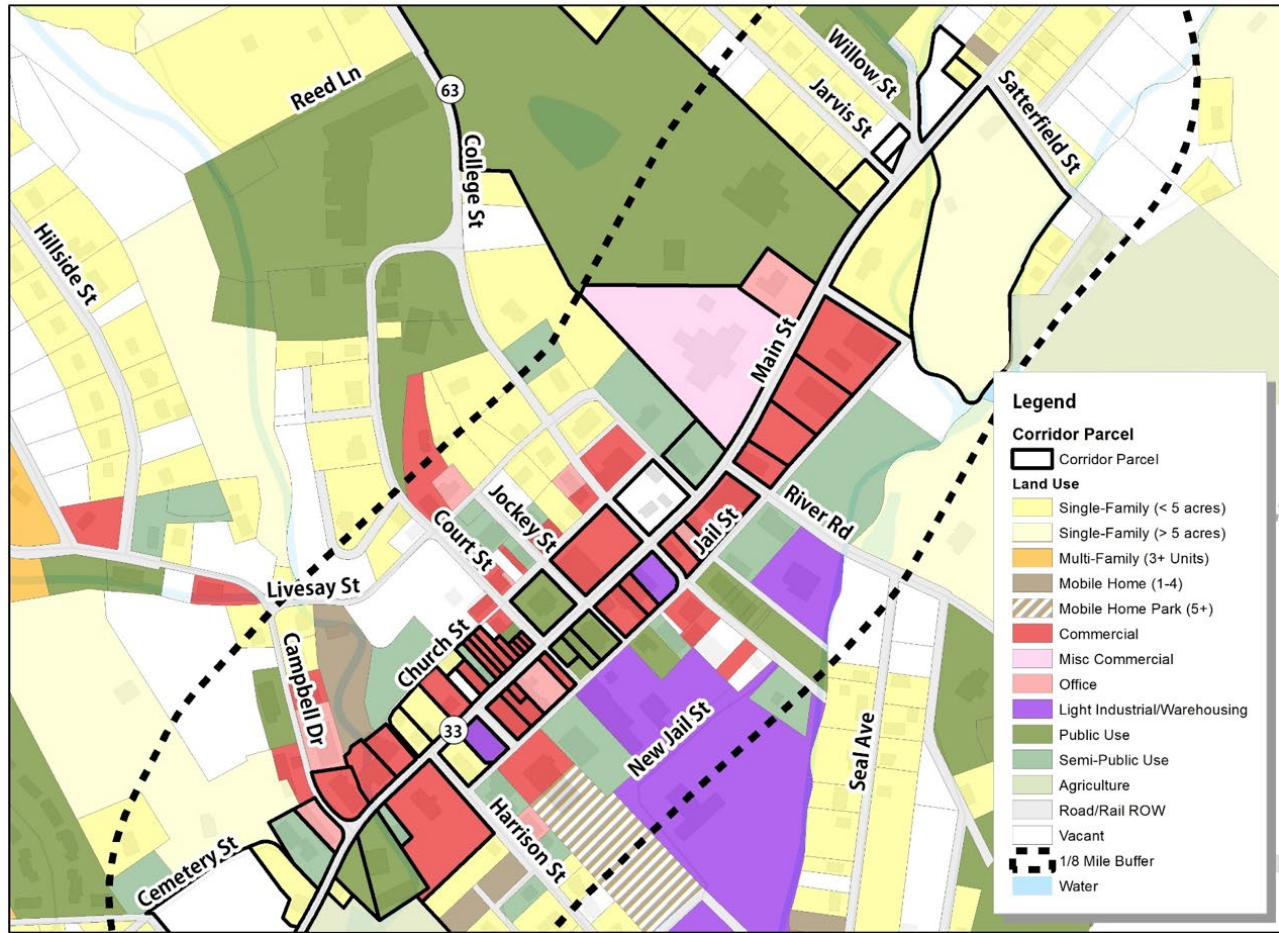
Figure 10 Crash Severity (Past 10 Years)

Land Use

Land use data illustrated in Figure 11 is sourced from the Tennessee Comptroller of the Treasury. The map illustrates the mix and distribution of uses within Sneedville. Parcels that touch the study corridor are highlighted using a thick black border. Table 2 describes the acreage of these parcels, which are broken down by land use. It is important to note that while 'Agriculture' is shown as the largest use by acreage, only a small section of the parcel falls along the southwest portion of the study corridor. 'Public Use' parcels include the Hancock County Courthouse, Hospital, Highway Department, and other County-owned parcels. The land use patterns along the corridor, and within the greater community, provide for a walkable community, meaning there is a moderate mix of uses versus clustered uses.

Table 2 Land Use Acreage for Parcels with Corridor Frontage

General Land Use Type of Corridor Parcels	Acreage	% of Total
Agriculture	39.0	41.6%
Public Use (i.e., County-Owned)	23.7	25.3%
Commercial	8.9	9.5%
Single-Family Residential (> 5 Acres)	6.2	6.6%
Miscellaneous Commercial	4.8	5.1%
Single-Family Residential (< 5 Acres)	4.2	4.5%
Vacant	3.6	3.8%
Office	1.4	1.5%
Semi-Public Use	1.3	1.4%
Light Industrial / Warehousing	0.6	0.6%
Total Parcel Acreage	93.7	100%



Land Use

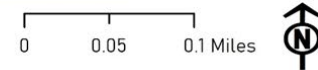


Figure 11 Land Use

Non-Motorized Network

Sneedville's small geographic footprint, low traffic volumes, proximity of uses, and the structure of the roadway network (blocks versus curvilinear) provide for a conducive environment for walking and biking. The website Walk Score helps users to identify walkable communities and neighborhoods using an algorithm that considers proximity to amenities, population densities, and roadway metrics, such as block lengths and intersection densities. Using the website's Travel Time Analysis tool, Figure 12 illustrates the distance one can travel from the Courthouse within 20 minutes, whether walking or biking at an average pace. All destinations within Sneedville fall within a 20-minute bike ride from the Courthouse; however, while most of the community's major destinations are reachable by a 20-minute walk or less, this is not true for the Middle/High School and residences located to the east of the community's core along SR 33 / Main Street (given the linear nature of the corridor and municipal limits in this area). Walking at an average pace from the Courthouse to the school campus, takes roughly 30 minutes.

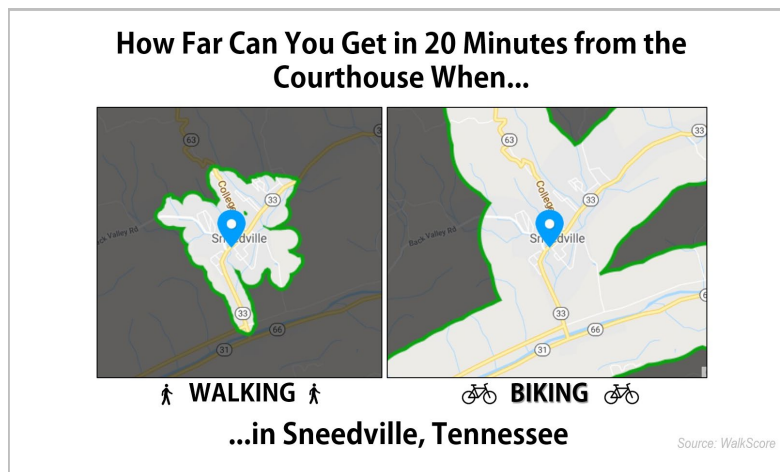
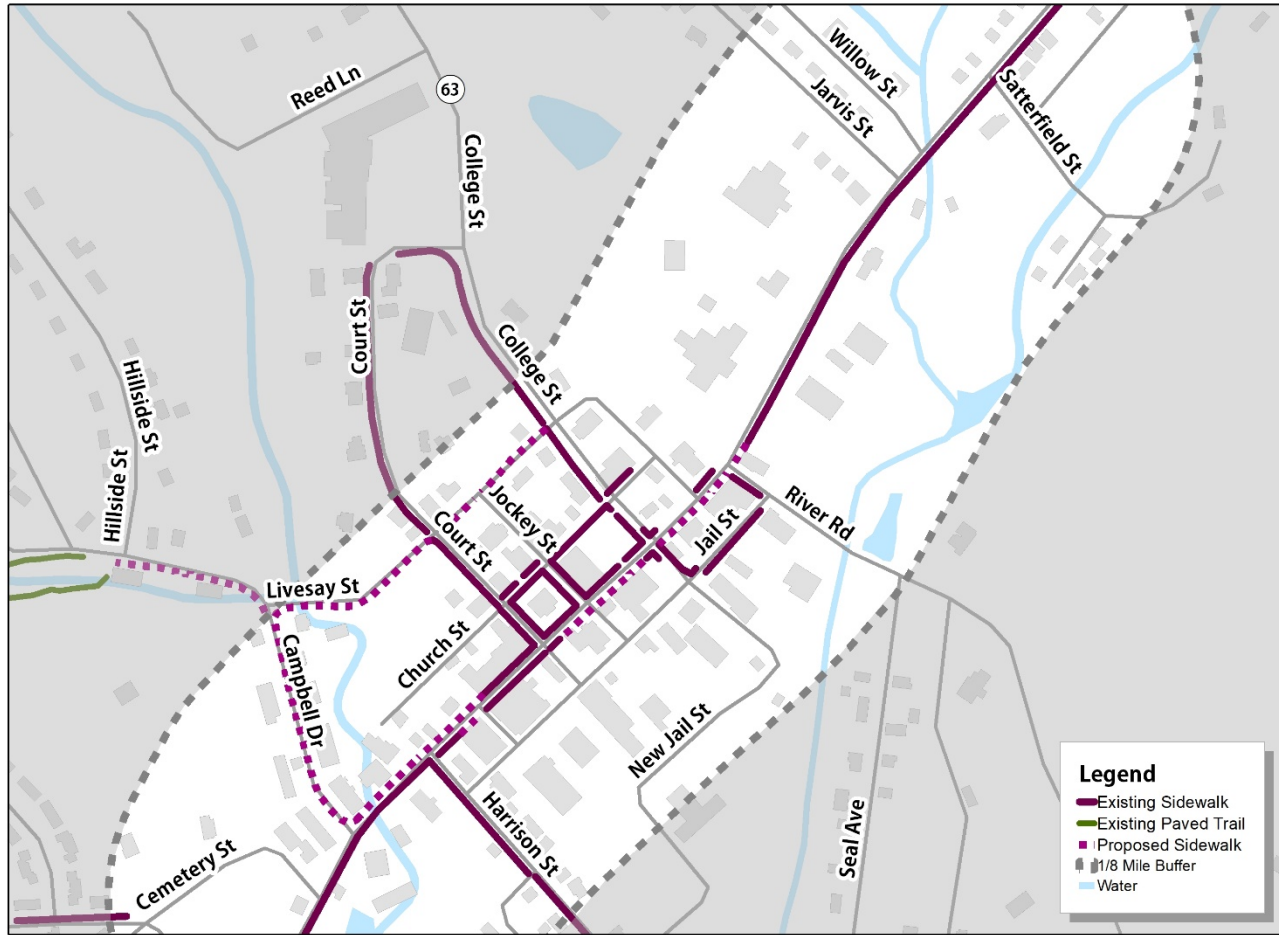


Figure 12 Travel Times by Alternate Modes of Travel

While there are no dedicated bicycle facilities, Sneedville has an extensive sidewalk network for a community of its size, as illustrated in Figure 13. The mileage of existing sidewalks is approximately 2.7 miles. The paved trail in the community park located along Campbell Drive / Back Valley Road is 0.2 miles. Grant opportunities have helped construct key sidewalk connections along SR 33 / Main Street, College Street, and Court Street providing linkages between the school campuses and the town's core. Evident in the map, gaps exist within the downtown acting as a barrier for pedestrians. In addition, critical community destinations located northwest of downtown, including three of Sneedville's four multifamily housing units and the community's paved walking trail, lack a safe connection along Campbell Drive/Back Valley Road to the core, as well as along Livesay Street to Hancock County Elementary School. While the sidewalk network to Sneedville's other two multifamily housing complexes is incomplete (to the west of SR 33 / Main Street along Cemetery Street), Cemetery Street and Walnut Avenue are considered safe for walking given the lack of any through connections (i.e., low traffic volume roadways).

Proposed sidewalks illustrated in Figure 13 were identified in Sneedville's 2018 TDOT Multimodal Grant. These recommendations were developed through a joint effort between City staff, a local engineering firm, and other regional and state agency representatives. Several recommended segments were removed (and thus are not illustrated) following a detailed evaluation of the corridor's existing conditions. A little over 0.7 miles of sidewalk are proposed for construction.



Sidewalk Network

Figure 13 Sidewalk Network

CHAPTER 3 - RECOMMENDATIONS

Chapter 3 includes recommended near-term and long-term conceptual improvements for the SR 33 / Main Street corridor. Improvements are the result of a culmination of efforts, including data collection, field visits, discussions with community leaders and TDOT staff, a previous TDOT multimodal grant application, and the results of the analyses in Chapter 2. Projects focus on providing safe pedestrian and bicycle accommodations, including proposed construction of new sidewalk, rehabilitation of existing sidewalk segments, striping crosswalks, addressing non-ADA/PROWAG-compliant curb ramps, and the addition of bulb-outs at key intersections to encourage safe crossings across SR 33 / Main Street. Descriptions of specific design elements, such as bulb-outs and crosswalks, are further described in the near-term recommendation section.

Recommendations are considered to be the long-term vision for the study corridor and are intended to be implemented over time through both the upcoming TDOT routine resurfacing of SR 33 / Main Street (tentatively scheduled for spring 2020) or by securing grant monies. Having a plan such as this one with desired improvements identified will better position the City to successfully secure grants. Grants relating to transportation, health, and tourism are the most likely candidates for potentially funding these projects. In addition, the plan gives the City bargaining power when a parcel is developed or redeveloped in terms of requiring improvements to be made by the developer.

Chapter 3 is broken down by near-term recommendations (those intended for TDOT’s consideration during the resurfacing project), long-term recommendations, and, finally, planning-level cost estimates. General design guidance for specific improvements is also provided in the near-term recommendation section. It should be noted that the Rite Aid was rebranded to a Walgreens prior to completion of the study.



Recommended Near-Term Improvements

As previously mentioned, a routine resurfacing of SR 33 / Main Street is slated to occur in spring 2020. These types of projects typically occur every 10-12 years. During such projects, TDOT paves and restripes the roadway, while making an effort (within reason) to upgrade non-ADA/PROWAG-compliant curb ramps. Additionally, TDOT may construct concrete median islands, intersection bulb-outs, and/or small sections of new sidewalk within the State’s right-of-way as a part of these projects. An initial assessment by TDOT engineers for the near-term resurfacing of SR 33 / Main St identified challenging drainage issues along the corridor, given the lack, or limited amount, of drainage infrastructure; therefore, most of the non-ADA/PROWAG-compliant curb ramps within the study section will not be addressed in the upcoming resurfacing project. As a result, curb ramps will need to be brought up to ADA/PROWAG compliance through municipal efforts, such as securing TDOT’s Multimodal Access Grant and other grants to address the need for stormwater infrastructure. This section consists of design elements, particularly bulb-outs and crosswalks, TDOT should consider implementing during the upcoming resurfacing project.

Bulb-Outs

Bulb-outs are structures that extend the curb line out into the shoulder or parking lane to physically/visually narrow the roadway, while keeping curb radii to a minimum. Ideally, bulb-outs are constructed out of concrete and are an extension of the sidewalk; however, where funding is limited, bulb-outs may be implemented using striping and other physical features, such as bollards, curbs, and planters (as illustrated in the photos below). Benefits of bulb-outs include a shorter crossing distance for pedestrians, improved sight distances for both motorists and pedestrians, and narrower travel lanes which helps to slow vehicular traffic.



Bulb-outs, also known as curb extensions, can be constructed out of concrete (as illustrated in the bottom left photo) or can be accomplished through a combination of striping and/or painting as well as physical barriers (such as bollards or curbs). The photos on the top row illustrate examples of the latter, which is a much cheaper alternative to concrete.

Bulb-out locations are identified in the long-term improvement figures at key intersections within the community's core. These include SR 33 / Main Street intersections with Court St, Jockey St, and College St. While these cross streets have limited width, excess pavement width along SR 33 / Main Street (where the on-street parking drops within 30 feet of the intersection) allows for bulb-out structures to be constructed. These three intersections were identified based on the lack of an existing seamless sidewalk connection on the south side of SR 33 / Main Street, in addition to the presence of pedestrian-generating destinations on either side of the corridor within these four blocks of downtown. This infrastructure will assist pedestrians in navigating to existing sidewalks on the northern side of SR 33 / Main Street. Constructing bulb-outs will



Looking westbound from the SR 33 / Main Street / Court Street intersection, this image shows the excess pavement space that could be utilized for the construction of bulb-outs at key intersections.

also mean that the new curb ramps will be ADA/PROWAG-compliant. If envisioned bulb-outs are not constructed at all identified intersections, the curb ramps will still need to be brought up to standard.

Figure 14 illustrates general design guidelines for bulb-outs. The curb radius is an important aspect of the design as this impacts turning vehicle speeds. The larger the radii the greater the encouragement for vehicles to move quickly when turning. Desired turning speeds for vehicles should be limited to 15 mph or less in an urban environment. This is crucial for the safety of pedestrians and cyclists as intersections are where motorists are most likely cross paths with non-motorized users. In addition, a larger radius creates a longer crossing distance leading to greater exposure to conflicts with vehicles; therefore, the curb radii should be kept to a minimum where possible. Truck movements should be considered when identifying appropriate curb radii and/or intersections for bulb-outs.

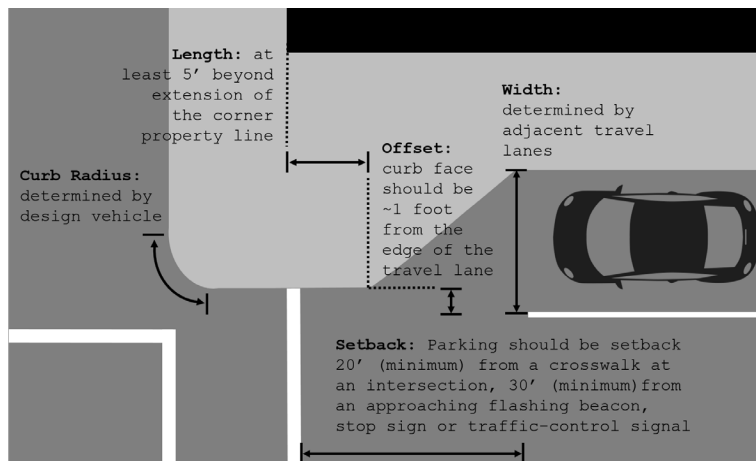


Figure 14 Bulb-Out Design Guidance

Recommended Long-Term Improvements

Prior to describing improvements for the study corridor, one intersection (just beyond the study's limits) should be mentioned given its importance for non-motorized connectivity in the community. Two of Sneedville's five multifamily complexes are located just beyond the extent of the map in Figure 17 (to the north and west of the Walnut Avenue / Newman Street and SR 33 / Main Street intersection). The City should evaluate the need for a potential marked crosswalk at this intersection to encourage a safe crossing for potential pedestrians and cyclists making their way to the existing sidewalk on the eastside of SR 33 / Main Street and into downtown. It should be noted that striping a crosswalk requires two ADA/PROWAG-compliant curb ramps on either side of the crosswalk (which would need to be constructed). Given the curvature of SR 33 / Main Street at this location, consideration for additional measures, such as painted rumble strips and/or additional warning signage, should be given. While an important connection, this location should be considered a secondary priority to the proposed crosswalk at Campbell Drive, which is a key nexus intersection in Sneedville's non-motorized network.



Figure 17 Walnut Avenue / Newman Street Intersection

The corridor has been broken down into five sections for purposes of illustrating conceptual recommendations, as illustrated in Figure 18. Sidewalk projects are denoted by letters (A, B, C, etc.) and correspond to planning-level cost estimates provided in this section. Sections are roughly as follows:

- Section A – Cemetery Rd to Harrison St
- Section B – Harrison St to Court St
- Section C – Court St to College St
- Section D – College St to Family Dollar
- Section E – Jarvis St and Willow St intersections with SR 33 / Main St

PROPOSED CORRIDOR IMPROVEMENTS FIGURE KEY



Figure 18 Long-Term Improvement Figure Key

Figure 19 illustrates the long-term vision for Section C in the downtown core, specifically near the Rite Aid/Walgreens, Marathon Gas Station, and Sneedville Laundromat. For this segment of the corridor, the construction of a sidewalk on the southern side is envisioned. This recommendation will ultimately remove the open frontage (and thus, open parking) for several businesses on the south side between Court Street and River Road. On-street parking, however, will be part of the new roadway cross-section providing alternative parking areas for these businesses. Additional challenges associated with the new sidewalk connection, particularly the need for drainage infrastructure, are highlighted in Figure 20 – Figure 24.

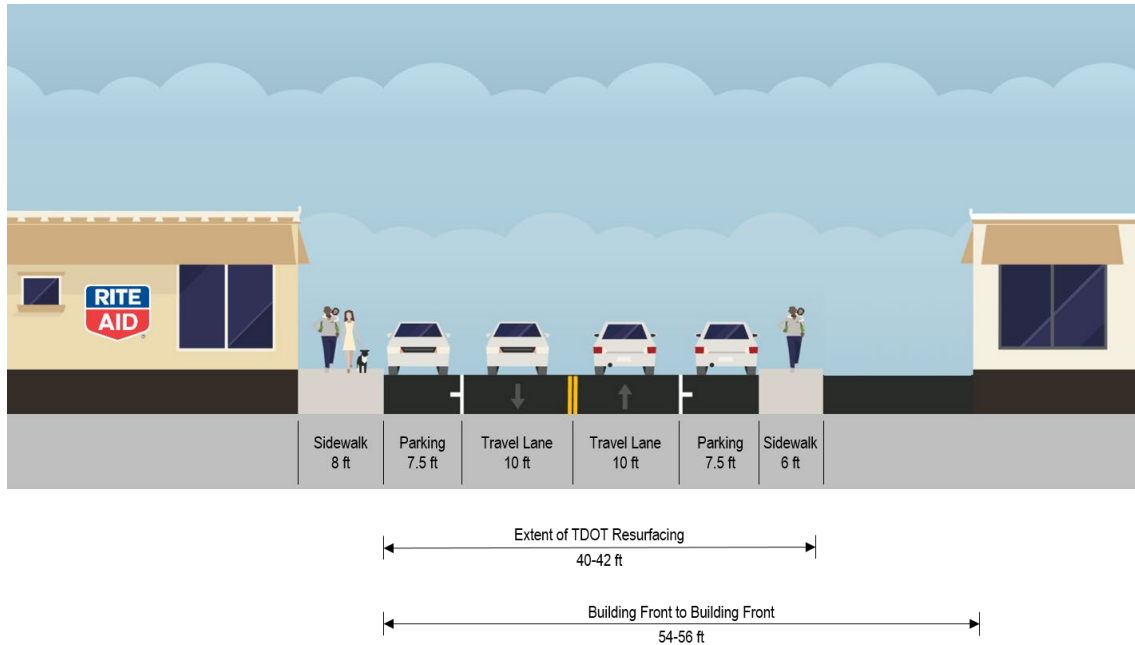


Figure 19 Long-Term Vision for SR 33 / Main Street Cross-Section in Downtown Sneedville



Rendering of how a new sidewalk and on-street parking could look along the south side of SR 33 / Main Street in Downtown.

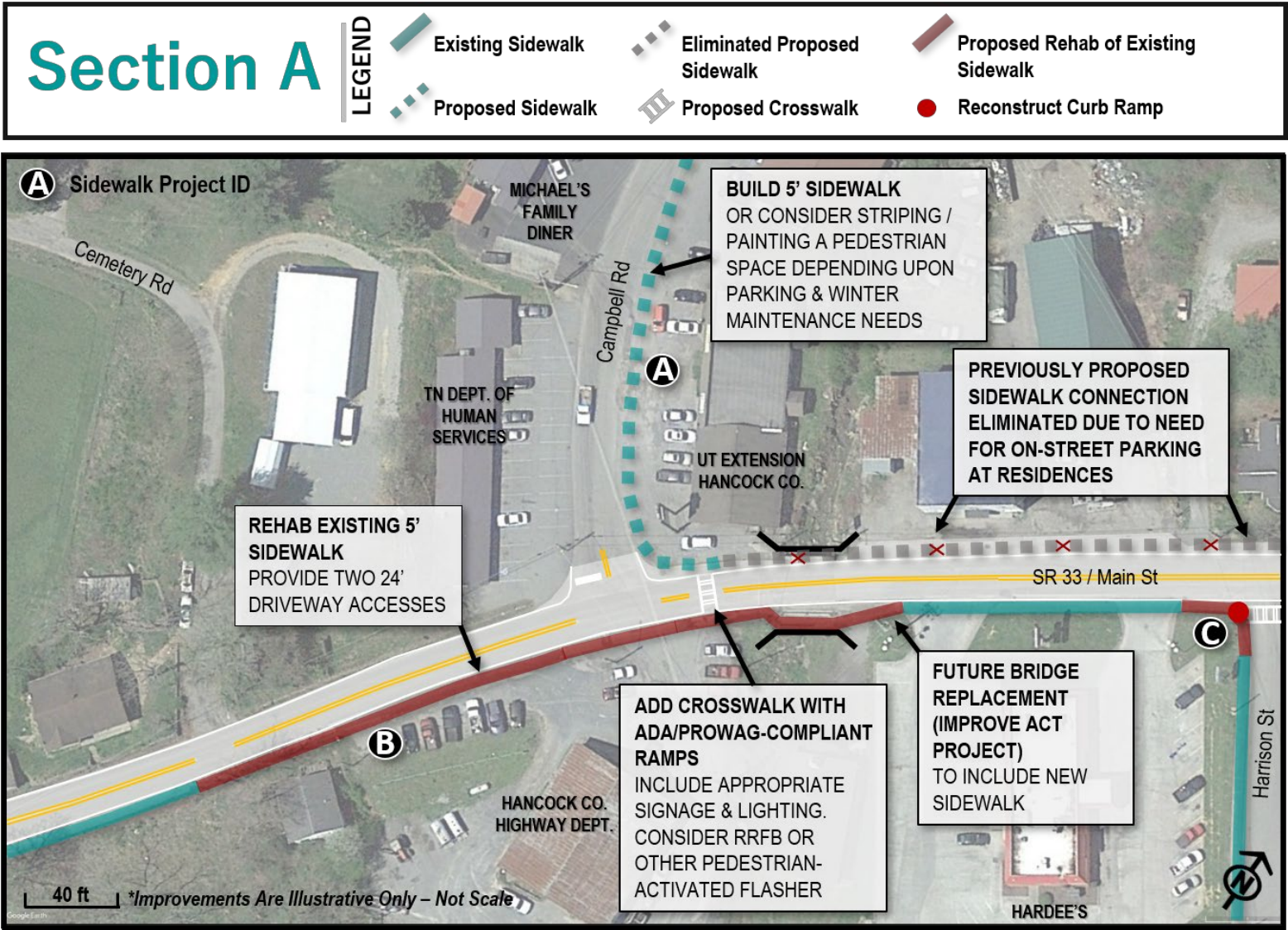


Figure 20 Section A Recommended Long-Term Improvements

Section B

LEGEND					
	Existing Sidewalk		Proposed Rehab of Existing Sidewalk		Proposed On-Street Parking
	Proposed Sidewalk		Proposed Crosswalk		Proposed Bulb-Out
					Reconstruct Curb Ramp

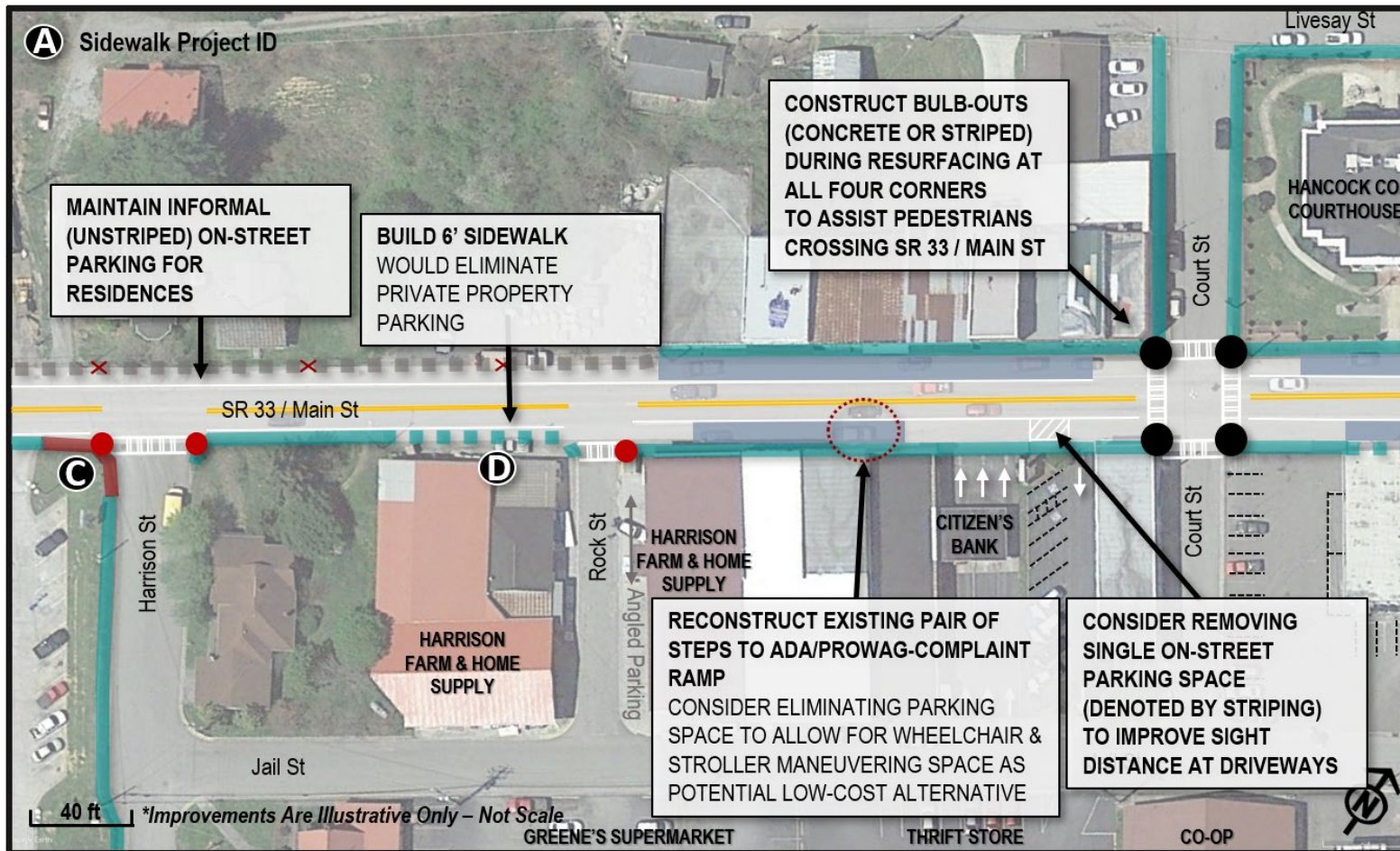


Figure 21 Section B Recommended Long-Term Improvements

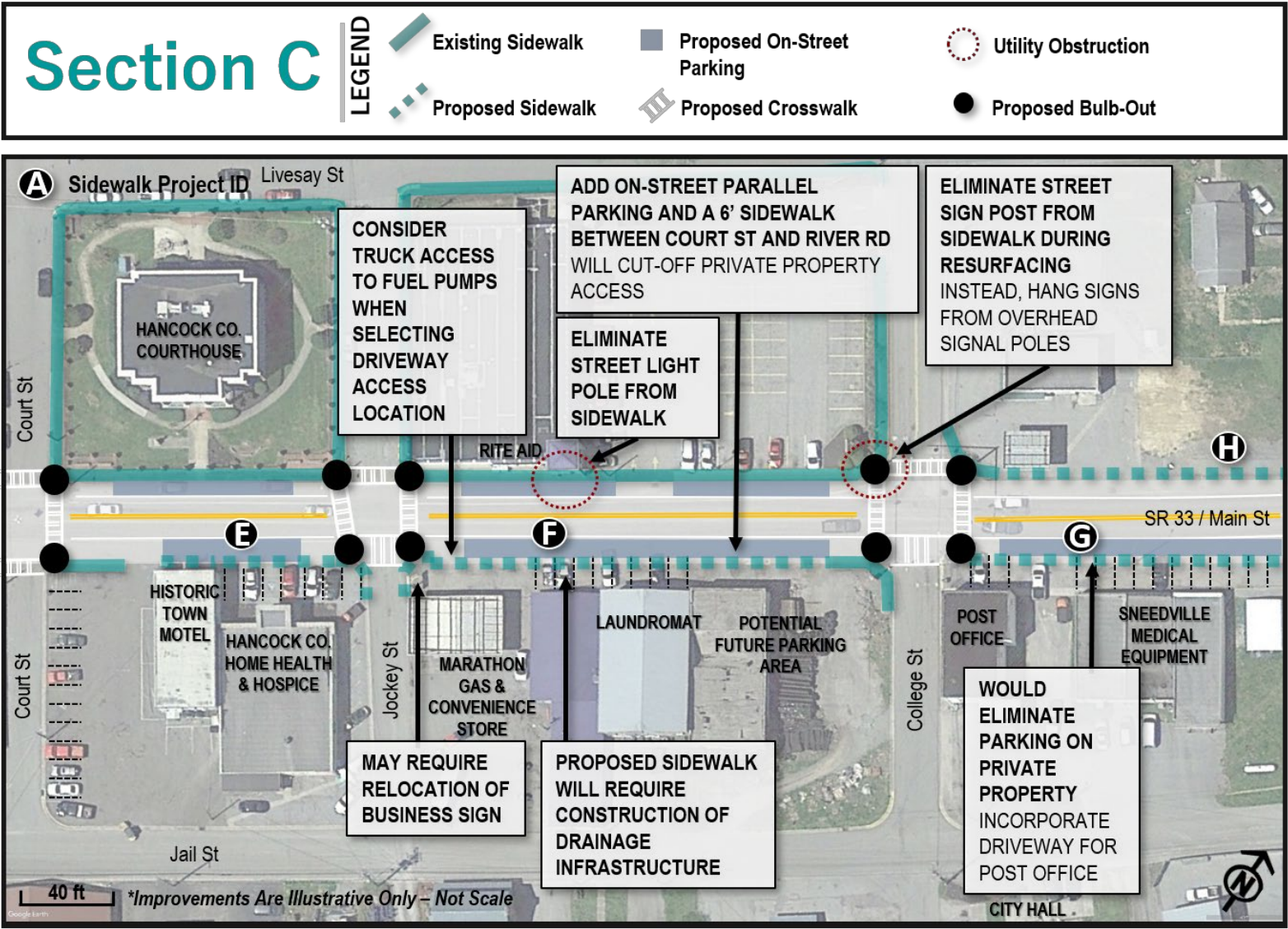


Figure 22 Section C Recommended Long-Term Improvements

Section D

LEGEND

-  Existing Sidewalk
-  Proposed Sidewalk
-  Proposed Rehab of Existing Sidewalk
-  Proposed Crosswalk

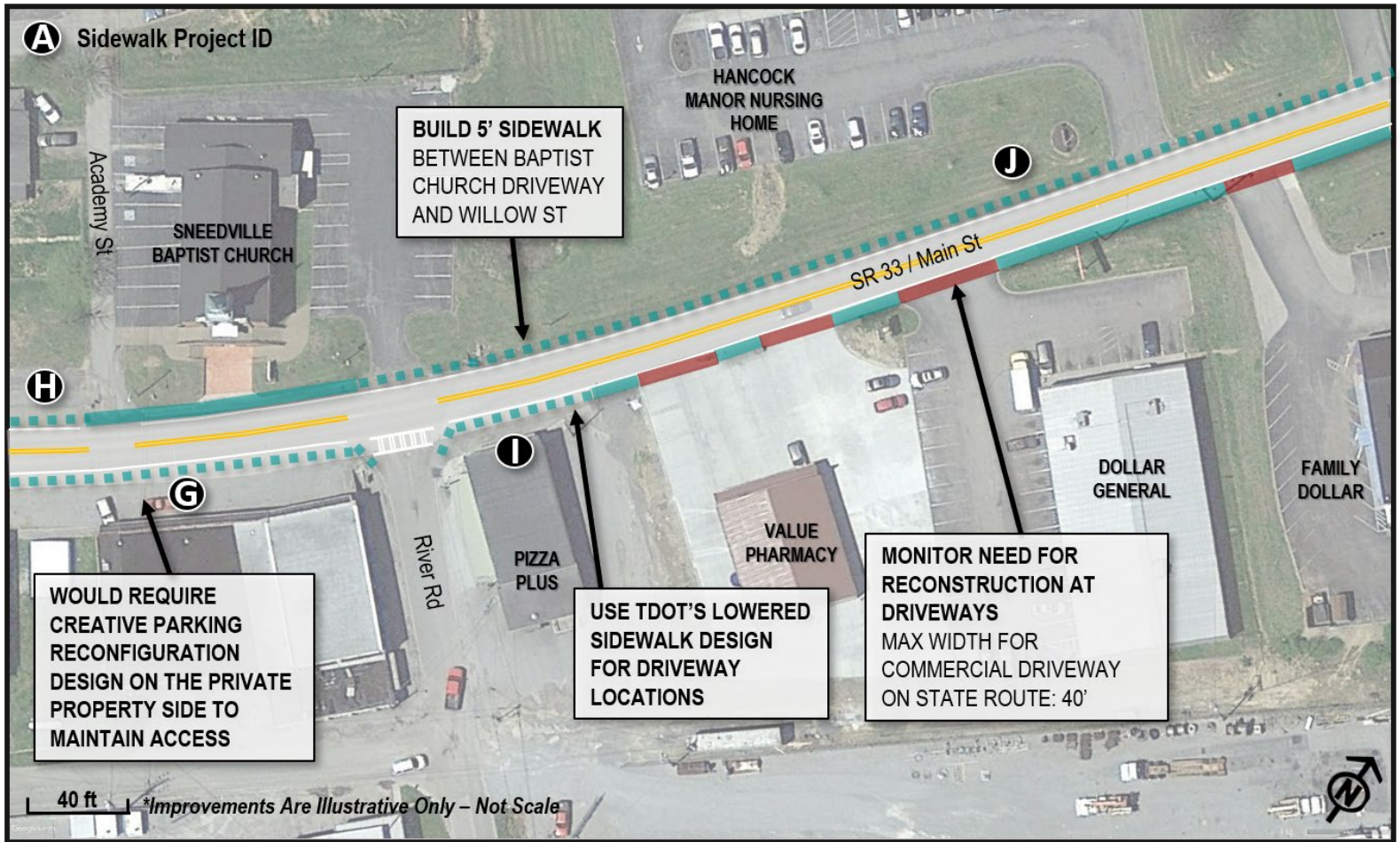


Figure 23 Section D Recommended Long-Term Improvements

Section E

LEGEND

-  Existing Sidewalk
-  Proposed Rehab of Existing Sidewalk
-  Proposed Sidewalk
-  Proposed Crosswalk

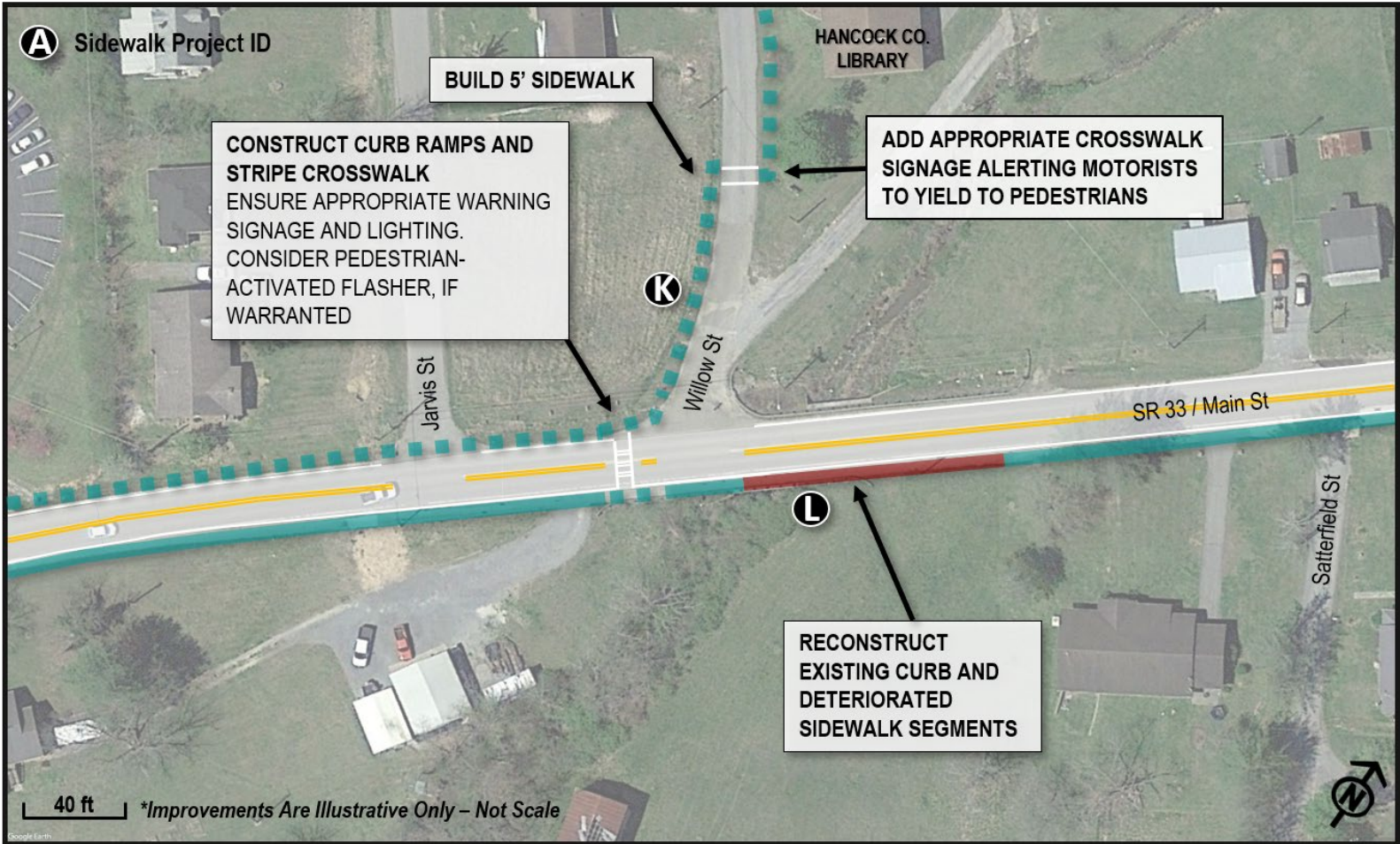


Figure 24 Section E Recommended Long-Term Improvements

Recommended Improvement Cost Estimates

Planning-level cost estimates provided in Table 3 were developed largely using TDOT’s Average Unit Prices (2018) from awarded contracts as well as prices. When available, the average unit price for Region 1 was used; if one was not provided specifically for the region, then the statewide average value was used. A contingency value of 30% was applied to cost estimates for CEI services (Construction, Engineering, and Inspection) for all estimates. It should be noted that cost savings could be realized if projects are bundled for implementation. In addition, drainage costs were calculated using the assumption that trench drains would be utilized in combination with Type 12 catch basins; however, more robust drainage may be required.

Table 3 Recommended Improvement Cost Estimates

Project Description	Number of Measures (If Applicable)	Project Measurement	Measurement Unit*	Avg. Cost / Unit	Cost for Proposed Recommendations	Contingency (30%)	Cost Estimate + Contingency	Cost Estimate Rounded to Nearest Tenth	Assumptions
Existing Sidewalk Rehabilitation									
PROJECT B - CAMPBELL DR									
REMOVAL OF RIGID PVMT, SIDEWALK, ETC.	-	500	SY	\$ 66.15	\$ 33,075.00	\$ 9,922.50	\$ 42,997.50	\$43,000	Sidewalk width: 5' (consider Lowered Standard Concrete Driveways at needed locations)
CONCRETE SIDEWALK (4 ")	-	1500	SF	\$ 8.66	\$ 12,990.00	\$ 3,897.00	\$ 16,887.00	\$16,890	
<i>SUB-TOTAL</i>								\$59,890	
PROJECT C - HARRISON ST									
REMOVAL OF RIGID PVMT, SIDEWALK, ETC.	-	22	SY	\$ 66.15	\$ 1,455.30	\$ 436.59	\$ 1,891.89	\$1,900	
CONCRETE SIDEWALK (4 ")	-	200	SF	\$ 8.66	\$ 1,732.00	\$ 519.60	\$ 2,251.60	\$2,260	
<i>SUB-TOTAL</i>								\$4,160	
PROJECT L - WILLOW ST									
REMOVAL OF RIGID PVMT, SIDEWALK, ETC.	-	67	SY	\$ 66.15	\$ 4,432.05	\$ 1,329.62	\$ 5,761.67	\$5,770	
CONCRETE SIDEWALK (4 ")	-	600	SF	\$ 8.66	\$ 5,196.00	\$ 1,558.80	\$ 6,754.80	\$6,760	
<i>SUB-TOTAL</i>								\$12,530	
PROJECT TYPE SUB-TOTAL								\$76,580	

Project Description	Number of Measures (If Applicable)	Project Measurement	Measurement Unit*	Avg. Cost / Unit	Cost for Proposed Recommendations	Contingency (30%)	Cost Estimate + Contingency	Cost Estimate Rounded to Nearest Tenth	Assumptions
New Sidewalk Construction									
PROJECT A - CAMPBELL DR [BETWEEN SR 33 & STERLING DR]									
CONCRETE SIDEWALK (4 ")	-	7,125	SF	\$ 8.66	\$ 61,702.50	\$ 18,510.75	\$ 80,213.25	\$80,220	Sidewalk width: 6' (consider Lowered Standard Concrete Driveways at needed locations)
CONCRETE CURB AND GUTTER	-	1,425	LF	\$ 25.00	\$ 35,625.00	\$ 10,687.50	\$ 46,312.50	\$46,320	
CONCRETE CURB RAMP	2	220	SF	\$ 21.56	\$ 4,743.20	\$ 1,422.96	\$ 6,166.16	\$6,170	
PLASTIC PAVEMENT MARKING (8IN LINE)	-	0.02	LM	\$ 8,016.24	\$ 160.32	\$ 48.10	\$ 208.42	\$210	
SIGNAGE	4	4	EACH	\$ 300.00	\$ 1,200.00	\$ 360.00	\$ 1,560.00	\$1,600	
TRENCH DRAINS	-	1,425	LF	\$ 195.11	\$ 278,031.75	\$ 83,409.53	\$ 361,441.28	\$361,450	
CATCH BASINS, TYPE 12, 0' - 4' DEPTH	14	14	EACH	\$ 4,079.40	\$ 57,111.60	\$ 17,133.48	\$ 74,245.08	\$74,250	
<i>SUB-TOTAL</i>								\$570,220	
PROJECT D - ROCK ST									
CONCRETE SIDEWALK (4 ")	-	530	SF	\$ 8.66	\$ 5,507.76	\$ 1,652.33	\$ 7,160.09	\$7,160	
CONCRETE CURB AND GUTTER	-	106	LF	\$ 25.00	\$ 2,650.00	\$ 795.00	\$ 3,445.00	\$3,450	
TRENCH DRAINS	-	106	LF	\$ 195.11	\$ 20,681.66	\$ 6,204.50	\$ 26,886.16	\$26,890	
CATCH BASINS, TYPE 12, 0' - 4' DEPTH	1	1	EACH	\$ 4,079.40	\$ 4,079.40	\$ 1,223.82	\$ 5,303.22	\$5,310	
<i>SUB-TOTAL</i>								\$42,810	
PROJECT E - COURT ST TO JOCKEY ST									
CONCRETE SIDEWALK (4 ")	-	530	SF	\$ 8.66	\$ 5,507.76	\$ 1,652.33	\$ 7,160.09	\$7,160	
CONCRETE CURB AND GUTTER	-	106	LF	\$ 25.00	\$ 2,650.00	\$ 795.00	\$ 3,445.00	\$3,450	
TRENCH DRAINS	-	106	LF	\$ 195.11	\$ 20,681.66	\$ 6,204.50	\$ 26,886.16	\$26,890	
CATCH BASINS, TYPE 12, 0' - 4' DEPTH	1	1	EACH	\$ 4,079.40	\$ 4,079.40	\$ 1,223.82	\$ 5,303.22	\$5,310	
<i>SUB-TOTAL</i>								\$42,810	
PROJECT F - JOCKEY ST TO COLLEGE ST									
CONCRETE SIDEWALK (4 ")	-	1,266	SF	\$ 8.66	\$ 10,963.56	\$ 3,289.07	\$ 14,252.63	\$14,260	

Project Description	Number of Measures (If Applicable)	Project Measurement	Measurement Unit*	Avg. Cost / Unit	Cost for Proposed Recommendations	Contingency (30%)	Cost Estimate + Contingency	Cost Estimate Rounded to Nearest Tenth	Assumptions	
CONCRETE CURB AND GUTTER	-	211	LF	\$ 25.00	\$ 5,275.00	\$ 1,582.50	\$ 6,857.50	\$6,860	Sidewalk width: 6' (consider Lowered Standard Concrete Driveways at needed locations)	
TRENCH DRAINS	-	211	LF	\$ 195.11	\$ 41,168.21	\$ 12,350.46	\$ 53,518.67	\$53,520		
CATCH BASINS, TYPE 12, 0' - 4' DEPTH	2	2	EACH	\$ 4,079.40	\$ 8,158.80	\$ 2,447.64	\$ 10,606.44	\$10,610		
<i>SUB-TOTAL</i>								\$85,250		
PROJECT G - COLLEGE ST TO RIVER RD										
CONCRETE SIDEWALK (4 ")	-	1,850	SF	\$ 8.66	\$ 16,021.00	\$ 4,806.30	\$ 20,827.30	\$20,830		
CONCRETE CURB AND GUTTER	-	370	LF	\$ 25.00	\$ 9,250.00	\$ 2,775.00	\$ 12,025.00	\$12,030		
TRENCH DRAINS	-	370	LF	\$ 195.11	\$ 72,190.70	\$ 21,657.21	\$ 93,847.91	\$93,850		
CATCH BASINS, TYPE 12, 0' - 4' DEPTH	3	3	EACH	\$ 4,079.40	\$ 12,238.20	\$ 3,671.46	\$ 15,909.66	\$15,910		
<i>SUB-TOTAL</i>								\$142,620		
PROJECT H – COLLEGE ST TO ACADEMY ST										
CONCRETE SIDEWALK (4 ")	-	930	SF	\$ 8.66	\$ 8,053.80	\$ 2,416.14	\$ 10,469.94	\$10,470		
CONCRETE CURB AND GUTTER	-	155	LF	\$ 25.00	\$ 3,875.00	\$ 1,162.50	\$ 5,037.50	\$5,040		
TRENCH DRAINS	-	155	LF	\$ 195.11	\$ 30,242.05	\$ 9,072.62	\$ 39,314.67	\$39,320		
CATCH BASINS, TYPE 12, 0' - 4' DEPTH	2	2	EACH	\$ 4,079.40	\$ 8,158.80	\$ 2,447.64	\$ 10,606.44	\$10,610		
<i>SUB-TOTAL</i>								\$65,440		
PROJECT I - RIVER RD										
CONCRETE SIDEWALK (4 ")	-	636	SF	\$ 8.66	\$ 5,507.76	\$ 1,652.33	\$ 7,160.09	\$7,160		
CONCRETE CURB AND GUTTER	-	106	LF	\$ 25.00	\$ 2,650.00	\$ 795.00	\$ 3,445.00	\$3,450		
TRENCH DRAINS	-	106	LF	\$ 195.11	\$ 20,681.66	\$ 6,204.50	\$ 26,886.16	\$26,890		
CATCH BASINS, TYPE 12, 0' - 4' DEPTH	1	1	EACH	\$ 4,079.40	\$ 4,079.40	\$ 1,223.82	\$ 5,303.22	\$5,310		
<i>SUB-TOTAL</i>								\$42,810		
PROJECT J – BAPTIST CHURCH DRIVE TO WILLOW ST										
CONCRETE SIDEWALK (4 ")	-	6,750	SF	\$ 8.66	\$ 58,455.00	\$ 17,536.50	\$ 75,991.50	\$76,000		

Project Description	Number of Measures (If Applicable)	Project Measurement	Measurement Unit*	Avg. Cost / Unit	Cost for Proposed Recommendations	Contingency (30%)	Cost Estimate + Contingency	Cost Estimate Rounded to Nearest Tenth	Assumptions
CONCRETE CURB AND GUTTER	-	1,125	LF	\$ 25.00	\$ 28,125.00	\$ 8,437.50	\$ 36,562.50	\$36,570	
TRENCH DRAINS	-	1,125	LF	\$ 195.11	\$ 219,498.75	\$ 65,849.63	\$ 285,348.38	\$285,250	
CATCH BASINS, TYPE 12, 0' - 4' DEPTH	11	11	EACH	\$ 4,079.40	\$ 44,873.40	\$ 13,462.02	\$ 58,335.42	\$58,340	
RETAINING WALL	-	385	SF	\$ 107.29	\$ 41,306.65	\$ 12,392.00	\$ 53,698.65	\$53,700	
REMOVE AND RELOCATE UTILITY POLE	3	3	EACH	\$ 4,000.00	\$ 12,000.00	\$ 3,600.00	\$ 15,600.00	\$15,600	
<i>SUB-TOTAL</i>								\$525,460	
PROJECT K - WILLOW ST [BETWEEN SR 33 & LIBRARY DRIVEWAY]									
CONCRETE SIDEWALK (4 ")	-	1,625	SF	\$ 8.66	\$ 14,072.50	\$ 4,221.75	\$ 18,294.25	\$18,300	
CONCRETE CURB AND GUTTER	-	317	LF	\$ 25.00	\$ 7,925.00	\$ 2,377.50	\$ 10,302.50	\$10,310	
CONCRETE CURB RAMP	4	440	SF	\$ 21.56	\$ 9,486.40	\$ 2,845.92	\$ 12,332.32	\$12,340	
REMOVAL OF RIGID PVMT, SIDEWALK, ETC.	-	65	SY	\$ 66.15	\$ 4,299.75	\$ 1,289.93	\$ 5,589.68	\$5,590	
PLASTIC PAVEMENT MARKING (8IN LINE)	-	0.02	LM	\$ 8,016.24	\$ 160.32	\$ 48.10	\$ 208.42	\$210	
SIGNAGE	4	4	EACH	\$ 300.00	\$ 1,200.00	\$ 360.00	\$ 1,560.00	\$1,600	
TRENCH DRAINS	-	106	LF	\$ 195.11	\$ 61,849.87	\$ 18,554.96	\$ 80,404.83	\$80,410	
CATCH BASINS, TYPE 12, 0' - 4' DEPTH	3	3	EACH	\$ 4,079.40	\$ 12,238.20	\$ 3,671.46	\$ 15,909.66	\$15,910	
<i>SUB-TOTAL</i>								\$144,670	
<i>PROJECT TYPE SUB-TOTAL</i>								\$1,659,000	
Existing Curb Ramp Rehabilitation									
CONCRETE CURB RAMP (RETROFIT)	3	330	SF	\$ 32.47	\$ 10,715.10	\$ 3,214.53	\$ 13,929.63	\$13,930	Curb ramp size: 110'

Project Description	Number of Measures (If Applicable)	Project Measurement	Measurement Unit*	Avg. Cost / Unit	Cost for Proposed Recommendations	Contingency (30%)	Cost Estimate + Contingency	Cost Estimate Rounded to Nearest Tenth	Assumptions
Bulb-Out Construction									
CONCRETE MEDIAN PAVEMENT	12	36	CY	\$ 393.85	\$ 14,178.60	\$ 4,253.58	\$ 18,432.18	\$18,440	Bulb-out size: 3 CY
TRUNCATED DOME DETECTABLE WARNING MAT	24	192	SF	\$ 25.51	\$ 4,897.92	\$ 1,469.38	\$ 6,367.30	\$6,370	Mat size: 8 SF; Assumes 2 per bulb-out
<i>SUB-TOTAL</i>								\$24,810	
Crosswalks (Alternative Striping)									
PLASTIC PAVEMENT MARKING (8IN LINE)	17	0.28	LM	\$ 8,016.24	\$ 2,244.55	\$ 673.36	\$ 2,917.91	\$2,920	Crosswalk length: 20' Crosswalk width: 8'
Rectangular Rapid Flashing Beacon (RRFB)									
SOLAR PANEL AND POWER SYSTEM UNIT	6	6	EACH	\$ 2,257.96	\$ 13,547.76	\$ 4,064.33	\$ 17,612.09	\$17,620	Assumes 3 crosswalk locations; Assumes decorative pole
PEDESTAL POLE	6	6	EACH	\$ 2,859.00	\$ 17,154.00	\$ 5,146.20	\$ 22,300.20	\$22,300	
FOUNDATION (PED POLE 24" X 3')	6	6	EACH	\$ 600.00	\$ 3,600.00	\$ 1,080.00	\$ 4,680.00	\$4,680	
PEDESTRIAN PUSH BUTTON WITH 15" SIGN	6	6	EACH	\$ 400.00	\$ 2,400.00	\$ 720.00	\$ 3,120.00	\$3,120	
FLASHING WARNING BEACON (RECT RAPID FLASHING (sic) BEACON)	6	6	EACH	\$ 3,000.00	\$ 18,000.00	\$ 5,400.00	\$ 23,400.00	\$23,400	
PROJECT TYPE SUB-TOTAL								\$71,120	

*Measurement Unit Abbreviations: Linear Feet (LF); Square Feet (SF); Linear Mile (LM); Cubic Yard (CY); Square Yard (SY)

CHAPTER 4 - CONCLUSION

The transportation network in this small rural town is important for the vitality and health of the community and county in many respects. The walkable nature of Sneedville’s core, i.e., close proximity of numerous destinations, grid street network, and sidewalk connectivity in areas, provides an excellent foundation for further increasing multimodal accessibility within the downtown and the greater community. Recommendations presented in this plan work towards this goal allowing the City to maximize resources available to them, including grant opportunities as well as routine resurfacing projects completed by TDOT. Moving forward, the City should consider this plan as documentation for the community’s long-term vision for multimodal accessibility, should be referenced when pursuing grants, and be updated as needed.



APPENDIX A - PUBLIC ENGAGEMENT

An online survey was used to refine the final recommended improvements for the SR 33 / Main Street corridor. In addition, the information provides the City with an idea for the relative importance of the improvements to the residents of the community. This is important given the nature of the plan's implementation, i.e., partially through TDOT's upcoming routine resurfacing project, which will seek to incorporate elements of the recommended improvements. The survey link was posted on the community's Facebook page and received 218 total responses. Results may be found on the following pages.

Sneedville State Route 33 / Main Street Complete Streets Study

Friday, September 06, 2019

Powered by  SurveyMonkey

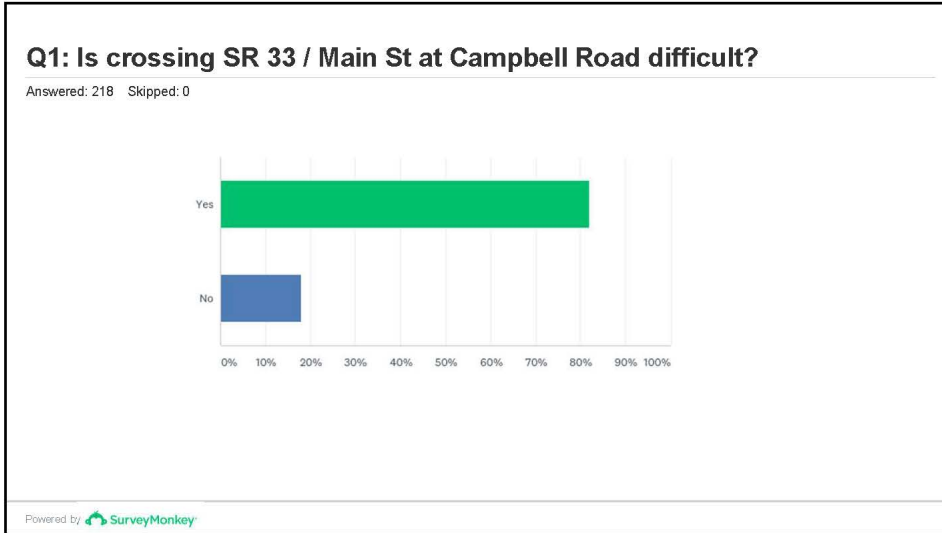
218

Total Responses

Date Created: Friday, August 09, 2019

Complete Responses: 165

Powered by  SurveyMonkey

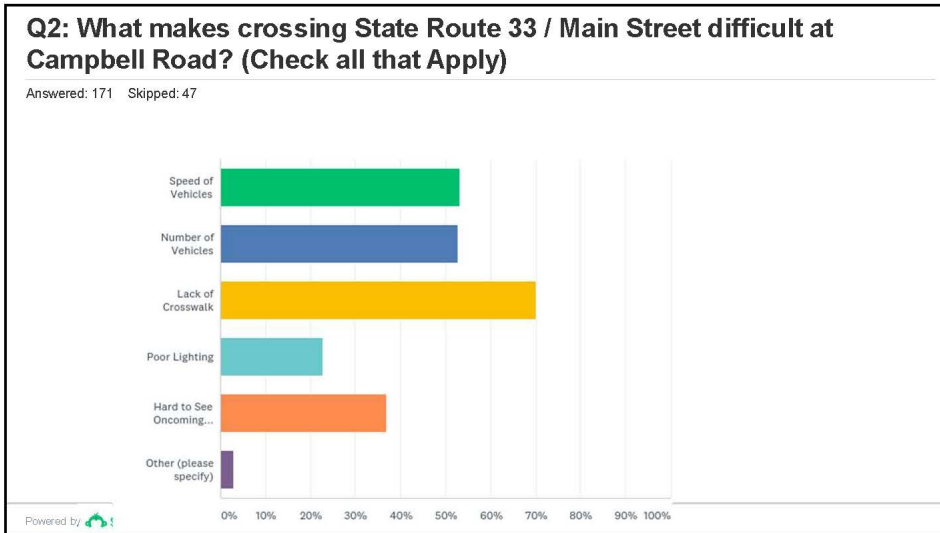


Q1: Is crossing SR 33 / Main St at Campbell Road difficult?

Answered: 218 Skipped: 0

ANSWER CHOICES	RESPONSES	
Yes	82.11%	179
No	17.89%	39
TOTAL		218

Powered by SurveyMonkey

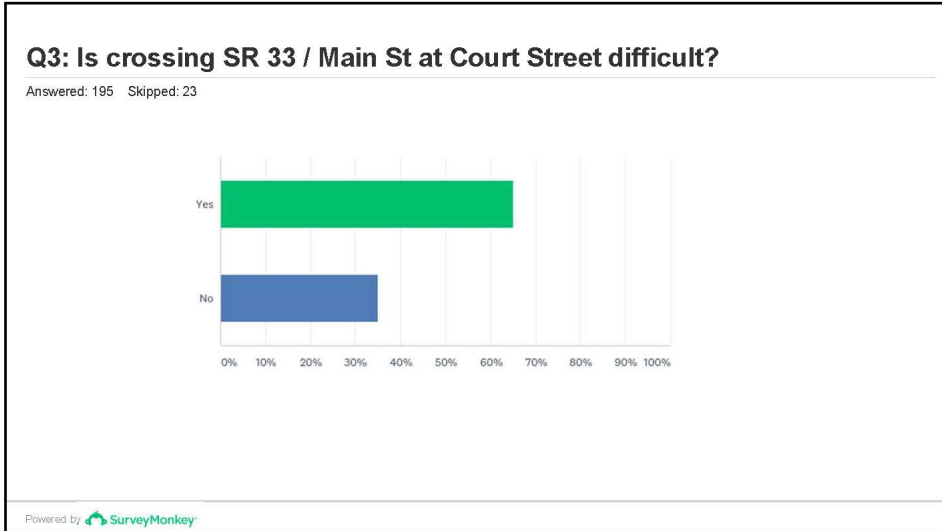


Q2: What makes crossing State Route 33 / Main Street difficult at Campbell Road? (Check all that Apply)

Answered: 171 Skipped: 47

ANSWER CHOICES	RESPONSES	Count
Speed of Vehicles	53.22%	91
Number of Vehicles	52.63%	90
Lack of Crosswalk	70.18%	120
Poor Lighting	22.81%	39
Hard to See Oncoming Traffic	36.84%	63
Other (please specify)	2.92%	5
Total Respondents: 171		

Powered by SurveyMonkey

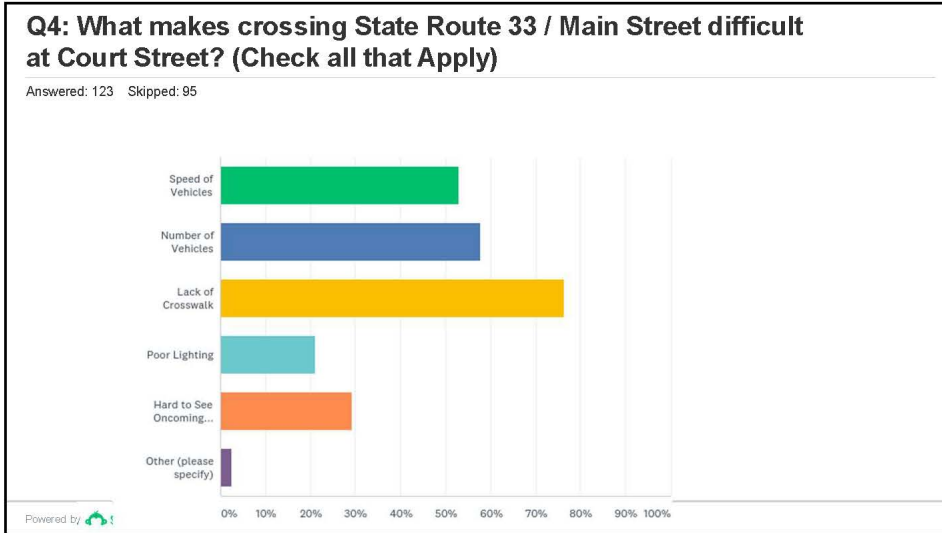


Q3: Is crossing SR 33 / Main St at Court Street difficult?

Answered: 195 Skipped: 23

ANSWER CHOICES	RESPONSES	
Yes	65.13%	127
No	34.87%	68
TOTAL		195

Powered by SurveyMonkey



Q4: What makes crossing State Route 33 / Main Street difficult at Court Street? (Check all that Apply)

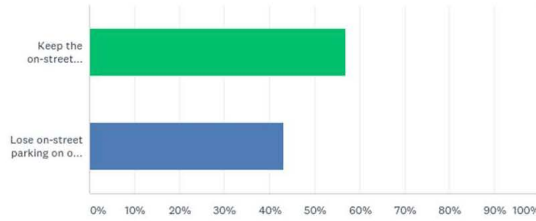
Answered: 123 Skipped: 95

ANSWER CHOICES	RESPONSES	Count
Speed of Vehicles	52.85%	65
Number of Vehicles	57.72%	71
Lack of Crosswalk	76.42%	94
Poor Lighting	21.14%	26
Hard to See Oncoming Traffic	29.27%	36
Other (please specify)	2.44%	3
Total Respondents: 123		

Powered by SurveyMonkey

Q5: Currently, the travel lanes on SR 33 / Main Street are 10 feet wide. Would you prefer to:

Answered: 183 Skipped: 35



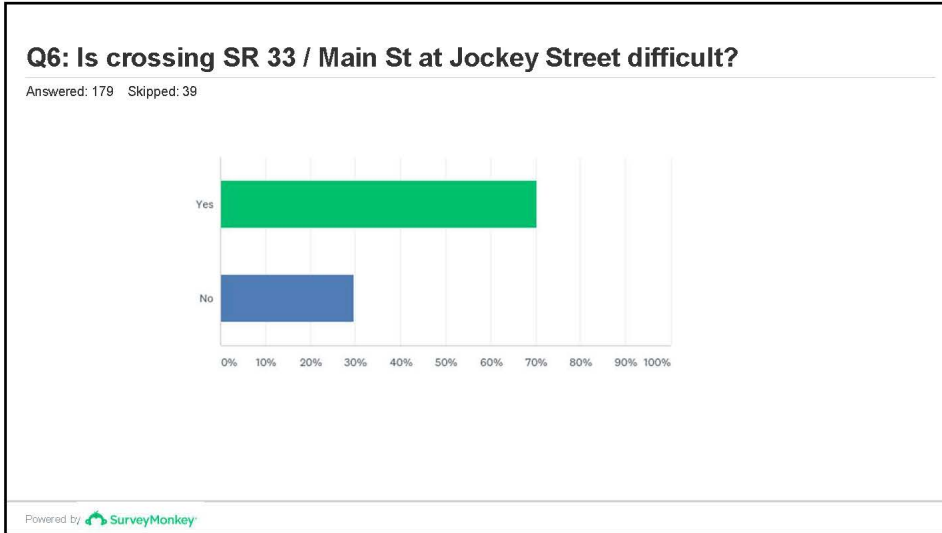
Powered by SurveyMonkey

Q5: Currently, the travel lanes on SR 33 / Main Street are 10 feet wide. Would you prefer to:

Answered: 183 Skipped: 35

ANSWER CHOICES	RESPONSES
Keep the on-street parallel parking on both sides of the roadway	56.83% 104
Lose on-street parking on one side in order to make the travel lanes wider	43.17% 79
TOTAL	183

Powered by SurveyMonkey

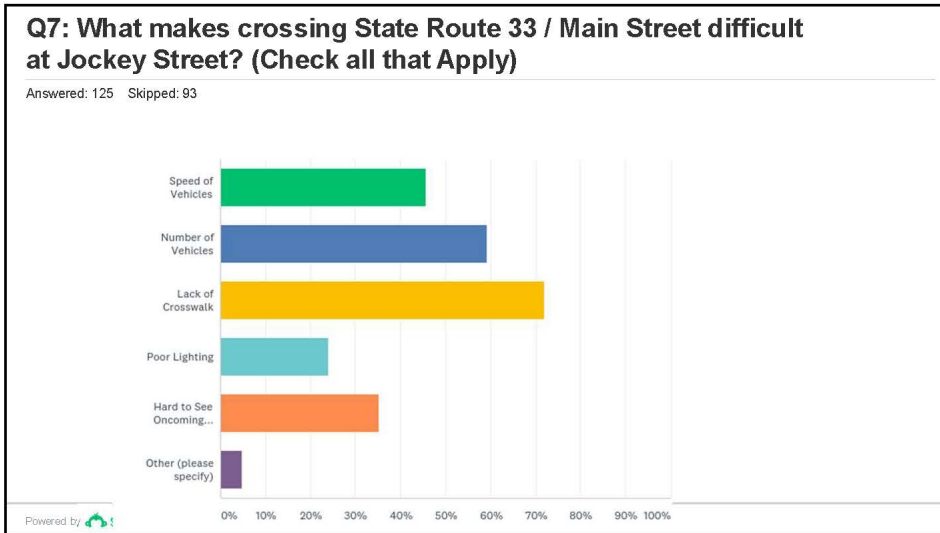


Q6: Is crossing SR 33 / Main St at Jockey Street difficult?

Answered: 179 Skipped: 39

ANSWER CHOICES	RESPONSES	
Yes	70.39%	126
No	29.61%	53
TOTAL		179

Powered by SurveyMonkey

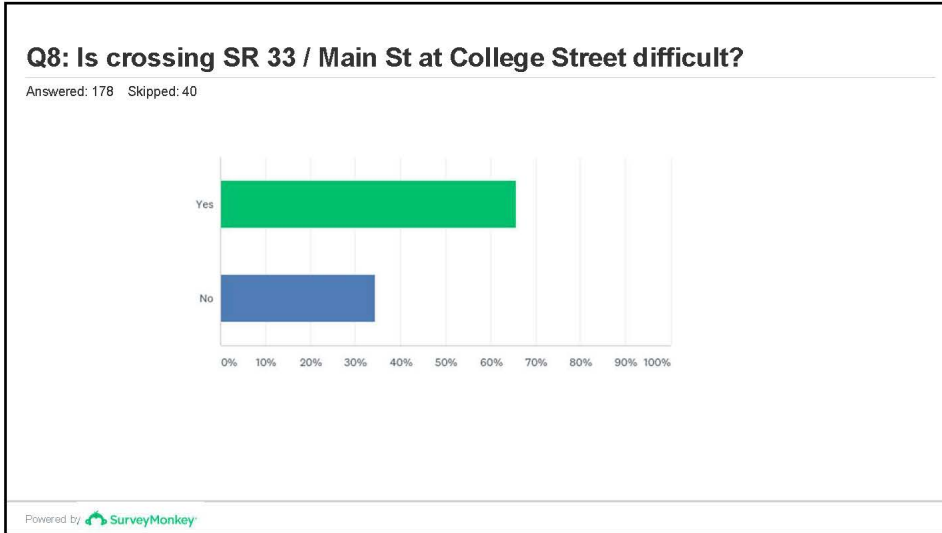


Q7: What makes crossing State Route 33 / Main Street difficult at Jockey Street? (Check all that Apply)

Answered: 125 Skipped: 93

ANSWER CHOICES	RESPONSES	Count
Speed of Vehicles	45.60%	57
Number of Vehicles	59.20%	74
Lack of Crosswalk	72.00%	90
Poor Lighting	24.00%	30
Hard to See Oncoming Traffic	35.20%	44
Other (please specify)	4.80%	6
Total Respondents: 125		

Powered by

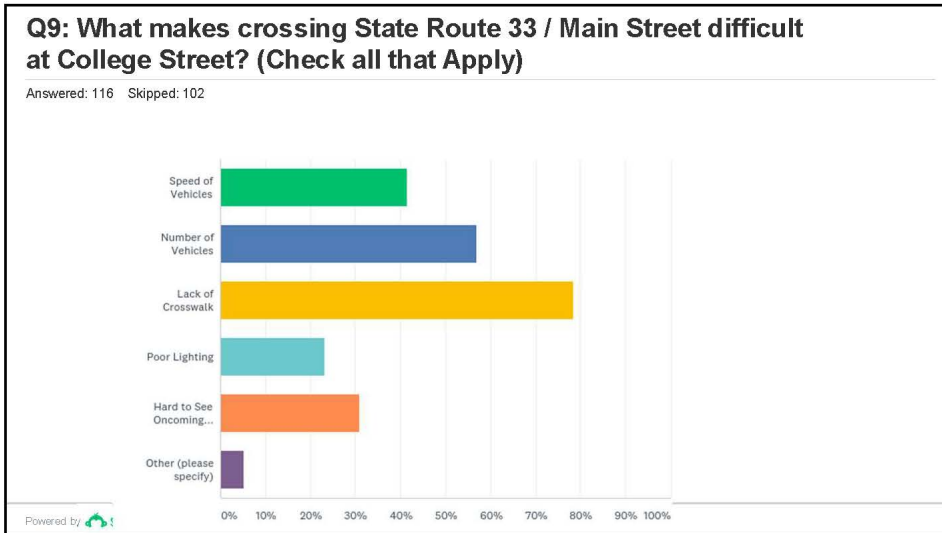


Q8: Is crossing SR 33 / Main St at College Street difficult?

Answered: 178 Skipped: 40

ANSWER CHOICES	RESPONSES	
Yes	65.73%	117
No	34.27%	61
TOTAL		178

Powered by SurveyMonkey



Q9: What makes crossing State Route 33 / Main Street difficult at College Street? (Check all that Apply)

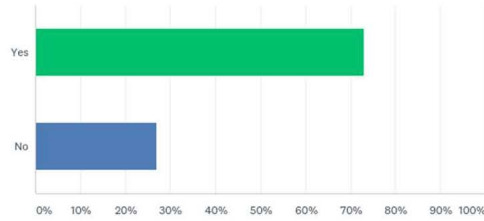
Answered: 116 Skipped: 102

ANSWER CHOICES	RESPONSES	Count
Speed of Vehicles	41.38%	48
Number of Vehicles	56.90%	66
Lack of Crosswalk	78.45%	91
Poor Lighting	23.28%	27
Hard to See Oncoming Traffic	31.03%	36
Other (please specify)	5.17%	6
Total Respondents: 116		

Powered by SurveyMonkey

Q10: Is a crosswalk needed to cross SR 33 / Main Street to get to the Hospital?

Answered: 174 Skipped: 44



Powered by SurveyMonkey

Q10: Is a crosswalk needed to cross SR 33 / Main Street to get to the Hospital?

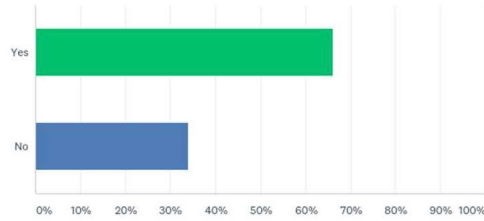
Answered: 174 Skipped: 44

ANSWER CHOICES	RESPONSES	
Yes	72.99%	127
No	27.01%	47
TOTAL		174

Powered by SurveyMonkey

Q11: In addition to the existing sidewalk on the south side of SR 33 / Main Street, is a sidewalk on the north side needed?

Answered: 174 Skipped: 44



Powered by SurveyMonkey

Q11: In addition to the existing sidewalk on the south side of SR 33 / Main Street, is a sidewalk on the north side needed?

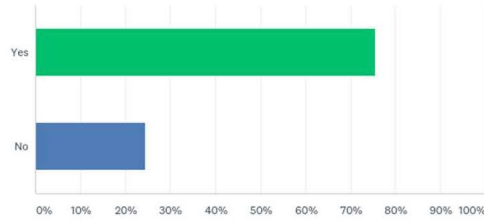
Answered: 174 Skipped: 44

ANSWER CHOICES	RESPONSES	
Yes	66.09%	115
No	33.91%	59
TOTAL		174

Powered by SurveyMonkey

Q12: Is a crosswalk needed at Willow Street to cross SR 33 / Main Street to get to the Library?

Answered: 171 Skipped: 47



Powered by SurveyMonkey

Q12: Is a crosswalk needed at Willow Street to cross SR 33 / Main Street to get to the Library?

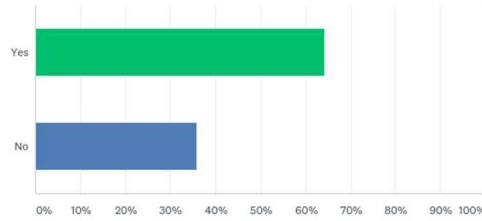
Answered: 171 Skipped: 47

ANSWER CHOICES	RESPONSES	
Yes	75.44%	129
No	24.56%	42
TOTAL		171

Powered by SurveyMonkey

Q13: In addition to the existing sidewalk on the south side of SR 33 / Main Street, is a sidewalk on the north side needed?

Answered: 171 Skipped: 47



Powered by SurveyMonkey

Q13: In addition to the existing sidewalk on the south side of SR 33 / Main Street, is a sidewalk on the north side needed?

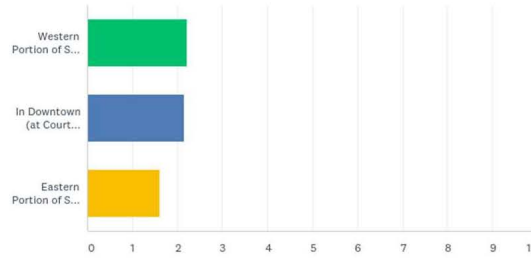
Answered: 171 Skipped: 47

ANSWER CHOICES	RESPONSES	
Yes	64.33%	110
No	35.67%	61
TOTAL		171

Powered by SurveyMonkey

Q14: Rank the following proposed crosswalk locations in order of greatest importance:

Answered: 167 Skipped: 51



Powered by SurveyMonkey

Q14: Rank the following proposed crosswalk locations in order of greatest importance:

Answered: 167 Skipped: 51

	1	2	3	TOTAL	SCORE
Western Portion of SR 33 / Main Street (at Campbell Dr)	44.91% 75	32.34% 54	22.75% 38	167	2.22
In Downtown (at Court Street, Jockey Street, and College Street)	35.93% 60	43.71% 73	20.36% 34	167	2.16
Eastern Portion of SR 33 / Main Street (at Willow Street)	19.16% 32	23.95% 40	56.89% 95	167	1.62

Powered by SurveyMonkey