

# Eastern Highland Rim Prairie and Barrens

## Conservation Opportunity Area



The Eastern Highland Rim Conservation Opportunity Area (COA) is a patchwork of remnant prairies, barrens, and croplands. The flora of the prairie and barrens is highly diverse, with many relict species of the Atlantic Coastal Plain that once extended into this area. These remnant habitats are home to a diverse number of breeding grassland birds, such as Henslow's Sparrows, many of which are species of Greatest Conservation Need (GCN). Habitat conversion and fragmentation from agricultural development and succession of grasslands into forest have reduced the available habitat for this species to only a few patches suitable for breeding. Many of the remaining patches are too small to support breeding pairs.

Native American use of fire once played an important role in the natural maintenance of the prairies and barrens, reducing the amount of woody vegetation that otherwise encroaches into these systems. Likewise, hydrology has a large influence on woody succession; the extremely flat topography is underlain with a hard pan, which causes surface ponding of water that in turn controls the woody vegetation.

Small patches of forest once occurred only sporadically across the landscape in areas of higher elevation (steeper slopes) and better soils. However, lack of fire combined with altered hydrology (ditching and culverts) has allowed forests to expand beyond their former extent.

The largest threats to the prairies and barrens of this COA are habitat conversion for agricultural purposes and urban sprawl - both of which contribute to increased habitat fragmentation - as well as the elimination of fire from the ecosystem. This COA also encompasses several headwaters springs and tributaries that harbor many GCN fish species, including the Barrens Topminnow and the Barrens Darter. Invasive exotic fish species, stream habitat alteration, and overuse of water resources are a management challenge in these streams.

### Public Lands within the COA

Arnold Engineering Development Center WMA, Bark Camp Barrens Wildlife Management Area (WMA), Headwaters WMA, Hickory Flat Woods WMA, Maple Springs WMA, May Prairie State Natural Area (SNA), Morrison Meadow, Normandy WMA, Old Stone Fort State Park (SP), Owl Hollow Mill WMA, Short Springs SNA, Tims Ford SP, Woods Reservoir Refuge



**The flora of the Eastern Highland Rim is highly diverse, and its grasslands support a diversity of rare birds. The topography and hydrology of the barrens support characteristic herbaceous and forested wetland habitats.**



Top to bottom: TWRA Prescribed burn - Clarence Coffey, TWRA (retired); Henslow's Sparrow - Chris Sloan/next page: Eastern Slender Glass Lizard - Chris M. Morris

# Eastern Highland Rim Prairie and Barrens Conservation Opportunity Area

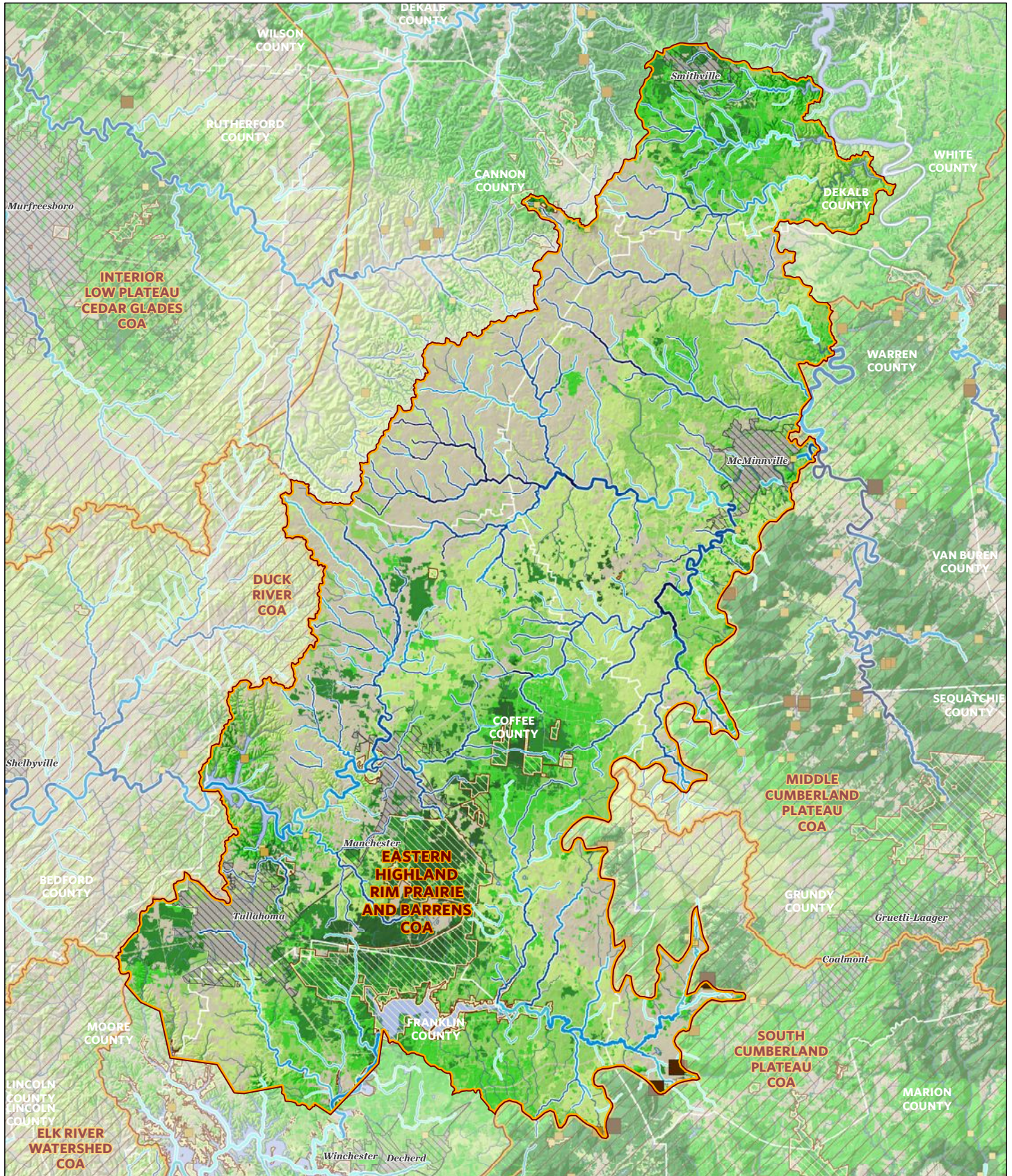
## Partnerships

TWRA will increase connectivity between existing grasslands and wetlands by restoring and managing grassland habitats on public lands, as well as assessing the likelihood of increasing connectivity between public lands within the COA and improving stream habitats. Management strategies and restoration projects will be implemented on private lands within the COA through partnerships with U.S. Fish and Wildlife Service, the Natural Resources Conservation Service/National Water Quality Initiative, Arnold Air Force Base, Tennessee Valley Authority, Tennessee Dept. of Education and Conservation, the Tennessee Aquarium, The Nature Conservancy, other agencies and willing private landowners.



Desired Change	Units
+ Use government-funded incentive programs to encourage willing private landowners to restore critical land units and aquatic resources/BMPs	Number
+ Restore pastures and agricultural lands to native ecosystems.	acres
+ Restore riparian buffers and physical stream habitat in priority locations throughout the watershed.	miles
+ Reintroduce prescribed fire into fire dependent grasslands and forest systems.	acres
+ Develop and implement an integrated pest management plan to aid in the control of native and exotic pests.	acres
+ Increase lands in conservation management by permanently protecting habitat through acquisition from willing private landowners.	acres
+ Improve population viability of native freshwater species.	animals
+ Encourage municipal and county governments to adopt zoning ordinances that limit or regulate development within critical units of aquatic, subterranean, and terrestrial habitats.	plans

To learn more about the Eastern Highland Rim Prairie and Barrens Conservation Opportunity Area, please contact: Josh Campbell, Wildlife Diversity Coordinator, Region 2 (615) 781-6626



0 2.5 5 Miles

<b>Habitat Priority</b>	Very High			
	High			
	Medium			
	Low			
	Very Low			

Conservation Opportunity Area

Protected Land



The Nature Conservancy  
Protecting nature. Preserving life.



Taxa Group	EASTERN HIGHLAND RIM PRAIRIE AND BARRENS COA GCN SPECIES (TN) Scientific & Common names
Amphibian	<i>Aneides aeneus</i> (Green Salamander)
Amphibian	<i>Hemidactylium scutatum</i> (Four-toed Salamander)
Amphibian	<i>Hyla versicolor</i> (Gray Treefrog)
Amphibian	<i>Rana capito</i> (Carolina Gopher Frog)
Bat	<i>Corynorhinus rafinesquii</i> (Rafinesque's Big-eared Bat)
Bat	<i>Myotis grisescens</i> (Gray Bat)
Bat	<i>Myotis leibii</i> (Eastern Small-footed Bat)
Bat	<i>Myotis lucifugus</i> (Little Brown Bat)
Bat	<i>Myotis septentrionalis</i> (Northern Myotis)
Bat	<i>Myotis sodalis</i> (Indiana Bat)
Bat	<i>Perimyotis subflavus</i> (Tri-colored Bat)
Bird	<i>Accipiter striatus</i> (Sharp-shinned Hawk)
Bird	<i>Ammodramus henslowii</i> (Henslow's Sparrow)
Bird	<i>Ammodramus leconteii</i> (LeConte's Sparrow)
Bird	<i>Ammodramus savannarum</i> (Grasshopper Sparrow)
Bird	<i>Anas rubripes</i> (American Black Duck)
Bird	<i>Aquila chrysaetos</i> (Golden Eagle)
Bird	<i>Bartramia longicauda</i> (Upland Sandpiper)
Bird	<i>Botaurus lentiginosus</i> (American Bittern)
Bird	<i>Calidris himantopus</i> (Stilt Sandpiper)
Bird	<i>Caprimulgus carolinensis</i> (Chuck-will's-widow)
Bird	<i>Caprimulgus vociferus</i> (Whip-poor-will)
Bird	<i>Cardellina canadensis</i> (Canada Warbler)
Bird	<i>Chaetura pelagica</i> (Chimney Swift)
Bird	<i>Chordeiles minor</i> (Common Nighthawk)
Bird	<i>Circus cyaneus</i> (Northern Harrier)
Bird	<i>Cistothorus platensis</i> (Sedge Wren)
Bird	<i>Colinus virginianus</i> (Northern Bobwhite)
Bird	<i>Egretta caerulea</i> (Little Blue Heron)
Bird	<i>Empidonax minimus</i> (Least Flycatcher)
Bird	<i>Empidonax traillii</i> (Willow Flycatcher)
Bird	<i>Euphagus carolinus</i> (Rusty Blackbird)
Bird	<i>Falco peregrinus</i> (Peregrine Falcon)
Bird	<i>Geothlypis Formosa</i> (Kentucky Warbler)
Bird	<i>Grus americana</i> (Whooping Crane)
Bird	<i>Haliaeetus leucocephalus</i> (Bald Eagle)
Bird	<i>Helmitheros vermivorum</i> (Worm-eating Warbler)
Bird	<i>Hylocichla mustelina</i> (Wood Thrush)
Bird	<i>Icteria virens</i> (Yellow-breasted Chat)
Bird	<i>Icterus spurius</i> (Orchard Oriole)
Bird	<i>Lanius ludovicianus</i> (Loggerhead Shrike)
Bird	<i>Melanerpes erythrocephalus</i> (Red-headed Woodpecker)
Bird	<i>Nycticorax nycticorax</i> (Black-crowned Night-heron)
Bird	<i>Parkesia motacilla</i> (Louisiana Waterthrush)
Bird	<i>Peucaea aestivalis</i> (Bachman's Sparrow)
Bird	<i>Pluvialis dominica</i> (American Golden Plover)
Bird	<i>Protonotaria citrea</i> (Prothonotary Warbler)
Bird	<i>Riparia riparia</i> (Bank Swallow)
Bird	<i>Scolopax minor</i> (American Woodcock)
Bird	<i>Setophaga caerulea</i> (Black-throated Blue Warbler)
Bird	<i>Setophaga cerulea</i> (Cerulean Warbler)
Bird	<i>Setophaga discolor</i> (Prairie Warbler)
Bird	<i>Setophaga dominica</i> (Yellow-throated Warbler)

EASTERN HIGHLAND RIM PRAIRIE AND BARRENS COA GCN SPECIES (TN)	
Taxa Group	Scientific & Common names
Bird	<i>Setophaga fusca</i> (Blackburnian Warbler)
Bird	<i>Sitta pusilla</i> (Brown-headed Nuthatch)
Bird	<i>Sturnella magna</i> (Eastern Meadowlark)
Bird	<i>Thryomanes bewickii</i> (Bewick's Wren)
Bird	<i>Tryngites subruficollis</i> (Buff-breasted Sandpiper)
Bird	<i>Tyto alba</i> (Barn Owl)
Bird	<i>Vermivora chrysoptera</i> (Golden-winged Warbler)
Bird	<i>Vermivora cyanoptera</i> (Blue-winged Warbler)
Bivalve	<i>Lasmigona holstonia</i> (Tennessee Heelsplitter)
Bivalve	<i>Pleurobema gibberum</i> (Cumberland Pigtoe)
Bivalve	<i>Pleuronaia barnesiana</i> (Tennessee Pigtoe)
Bivalve	<i>Simpsonaias ambigua</i> (Salamander Mussel)
Bivalve	<i>Villosa iris</i> (Rainbow)
Bivalve	<i>Villosa vanuxemensis</i> (Mountain Creekshell)
Crustacean	<i>Cambarus clivosus</i> (Short Mountain Crayfish)
Fish	<i>Erimystax dissimilis</i> (Streamline Chub)
Fish	<i>Etheostoma forbesi</i> (Barrens Darter)
Fish	<i>Etheostoma luteovinctum</i> (Redband Darter)
Fish	<i>Etheostoma olivaceum</i> (Sooty Darter)
Fish	<i>Fundulus julisia</i> (Barrens Topminnow)
Fish	<i>Hemitremia flammea</i> (Flame Chub)
Fish	<i>Notropis rubellus</i> (Rosyface Shiner)
Gastropod	<i>Anguispira alabama</i> (Alabama Tigersnail)
Gastropod	<i>Daedalochila auriformis</i> (Rockpile Liptooth)
Gastropod	<i>Paravitrea tantilla</i> (Teasing Supercoil)
Mammal	<i>Neotoma magister</i> (Allegheny Woodrat)
Mammal	<i>Ochrotomys nuttalli</i> (Golden Mouse)
Mammal	<i>Sorex cinereus</i> (Cinereus Shrew)
Mammal	<i>Sorex hoyi</i> (American Pygmy Shrew)
Mammal	<i>Sorex longirostris</i> (Southeastern Shrew)
Mammal	<i>Zapus hudsonius</i> (Meadow Jumping Mouse)
Plant	<i>Agalinis oligophylla</i> (Ridge-stem False-foxglove)
Plant	<i>Allium burdickii</i> (Narrow-leaf Ramps)
Plant	<i>Allium tricoccum</i> (Ramps)
Plant	<i>Berberis canadensis</i> (American Barberry)
Plant	<i>Carex barrattii</i> (Barratt's Sedge)
Plant	<i>Clematis glaucophylla</i> (White-leaved Leatherflower)
Plant	<i>Clematis morefieldii</i> (Morefield's Leather-flower)
Plant	<i>Clethra alnifolia</i> (Coastal Sweet Pepper-bush)
Plant	<i>Cotinus obovatus</i> (American Smoketree)
Plant	<i>Cypripedium kentuckiense</i> (Southern Lady's-slipper)
Plant	<i>Dichanthelium acuminatum</i> ssp. <i>spretum</i> (Eaton's Witchgrass)
Plant	<i>Drosera brevifolia</i> (Dwarf Sundew)
Plant	<i>Echinacea pallida</i> (Pale-purple Coneflower)
Plant	<i>Eleocharis lanceolata</i> (Lance-like Spike-rush)
Plant	<i>Eryngium integrifolium</i> (Blue-flower Coyote-thistle)
Plant	<i>Eupatorium leucolepis</i> (White-bracted Thoroughwort)
Plant	<i>Frullania obcordata</i> (Swamp Frullania)
Plant	<i>Gaylussacia dumosa</i> (Dwarf Huckleberry)
Plant	<i>Gentiana puberulenta</i> (Downy Gentian)
Plant	<i>Gymnopogon brevifolius</i> (Broad-leaved Beardgrass)
Plant	<i>Helianthemum propinquum</i> (Low Frostweed)
Plant	<i>Helianthus eggertii</i> (Eggert's Sunflower)

Taxa Group	EASTERN HIGHLAND RIM PRAIRIE AND BARRENS COA GCN SPECIES (TN) Scientific & Common names
Plant	<i>Iris prismatica</i> (Slender Blue Flag)
Plant	<i>Isoetes melanopoda</i> (Blackfoot Quillwort)
Plant	<i>Juglans cinerea</i> (Butternut)
Plant	<i>Lachnanthes carolina</i> (Carolina Redroot)
Plant	<i>Lathyrus palustris</i> (Marsh Pea)
Plant	<i>Lechea pulchella</i> (Leggett's Pinweed)
Plant	<i>Lejeunea sharpii</i> (Sharp's Lejeunea)
Plant	<i>Lespedeza angustifolia</i> (Narrowleaf Bushclover)
Plant	<i>Lilium michiganense</i> (Michigan Lily)
Plant	<i>Liparis loeselii</i> (Fen Orchid)
Plant	<i>Listera australis</i> (Southern Twayblade)
Plant	<i>Lobelia canbyi</i> (Canby's Lobelia)
Plant	<i>Lycopodiella alopecuroides</i> (Foxtail Clubmoss)
Plant	<i>Lysimachia terrestris</i> (Swamp Loosestrife)
Plant	<i>Lysimachia x producta</i> (Loosestrife)
Plant	<i>Marshallia trinervia</i> (Broad-leaved Barbara's-buttons)
Plant	<i>Muhlenbergia torreyana</i> (Torrey's Dropseed)
Plant	<i>Panax quinquefolius</i> (American Ginseng)
Plant	<i>Parnassia grandifolia</i> (Large-leaved Grass-of-parnassus)
Plant	<i>Pedicularis lanceolata</i> (Swamp Lousewort)
Plant	<i>Pellia appalachiana</i> ((a liverwort))
Plant	<i>Platanthera integra</i> (Yellow Fringeless Orchid)
Plant	<i>Platanthera nivea</i> (Snowy Orchid)
Plant	<i>Pogonia ophioglossoides</i> (Rose Pogonia)
Plant	<i>Polygala nuttallii</i> (Nuttall's Milkwort)
Plant	<i>Ponthieva racemosa</i> (Shadow-witch)
Plant	<i>Prenanthes aspera</i> (Rough Rattlesnake-root)
Plant	<i>Prunus pumila</i> (Sand Cherry)
Plant	<i>Rhynchospora caduca</i> (Falling Beaked-rush)
Plant	<i>Rhynchospora chalarocephala</i> (Loose-headed Beakrush)
Plant	<i>Rhynchospora perplexa</i> (Obscure Beak-rush)
Plant	<i>Rhynchospora rariflora</i> (Few-flowered Beak-rush)
Plant	<i>Scleria verticillata</i> (Low Nutrush)
Plant	<i>Silphium brachiatum</i> (Cumberland Rosinweed)
Plant	<i>Silphium pinnatifidum</i> (Southern Prairie-dock)
Plant	<i>Solidago stricta</i> var. <i>gracillima</i> (Virginia Goldenrod)
Plant	<i>Spiranthes lucida</i> (Shining Ladies'-tresses)
Plant	<i>Triantha racemosa</i> (Coastal False-asphodel)
Plant	<i>Trichomanes boschianum</i> (Bristle-fern)
Plant	<i>Trillium pusillum</i> (Least Trillium)
Plant	<i>Utricularia cornuta</i> (Horned Bladderwort)
Plant	<i>Utricularia subulata</i> (Zigzag Bladderwort)
Plant	<i>Vaccinium macrocarpon</i> (Cranberry)
Plant	<i>Xyris laxifolia</i> var. <i>iridifolia</i> (Wide-leaved Yellow-eyed Grass)
Plant	<i>Zigadenus leimanthoides</i> (Death-camas)
Reptile	<i>Crotalus horridus</i> (Timber Rattlesnake)
Reptile	<i>Heterodon platirhinos</i> (Eastern Hognosed Snake)
Reptile	<i>Pituophis melanoleucus melanoleucus</i> (Northern Pinesnake)
Reptile	<i>Terrapene carolina</i> (Eastern Box Turtle)
Subterranean - Amphibian	<i>Gyrinophilus palleucus</i> (Tennessee Cave Salamander)
Subterranean - Amphibian	<i>Gyrinophilus palleucus necturoides</i> (Big Mouth Cave Salamander)
Subterranean - Arachnid	<i>Agyneta</i> sp. (Trussell Cave Sheet-web Spider)
Subterranean - Arachnid	<i>Anthrobia mammothia</i> ((a cave obligate spider))

EASTERN HIGHLAND RIM PRAIRIE AND BARRENS COA GCN SPECIES (TN)	
Taxa Group	Scientific & Common names
Subterranean - Arachnid	Antrodiaetus sp. ((a foldingdoor trap-door spider))
Subterranean - Arachnid	Bishopella sp. Probably laciniosa (harvestman)
Subterranean - Arachnid	Calymmaria persica (Cave-loving funnel-web spider)
Subterranean - Arachnid	Chitrella archeri ((a cave obligate pseudoscorpion))
Subterranean - Arachnid	Cicurina breviararia (funnel-web spider)
Subterranean - Arachnid	Cicurina placida (funnel-web spider)
Subterranean - Arachnid	Coras taugynus (funnel-web spider)
Subterranean - Arachnid	Erebomaster sp. (harvestmen)
Subterranean - Arachnid	Hesperochernes mirabilis (Southeastern Cave Pseudoscorpion)
Subterranean - Arachnid	Kleptochthonius barri ((a cave obligate pseudoscorpion))
Subterranean - Arachnid	Kleptochthonius magnus ((a cave obligate pseudoscorpion))
Subterranean - Arachnid	Kleptochthonius tantalus ((a cave obligate pseudoscorpion))
Subterranean - Arachnid	Liocranoides archeri (Archer's two-clawed spider)
Subterranean - Arachnid	Liocranoides sp. (Two-clawed spider)
Subterranean - Arachnid	Meta ovalis (American cave orb weaver)
Subterranean - Arachnid	Nesticus barri ((a cave obligate spider))
Subterranean - Arachnid	Phalangodes appalachius (Appalachian Cave Harvestman)
Subterranean - Arachnid	Phalangodes sp. (cave harvestmen)
Subterranean - Arachnid	Phanetta subterranea (Subterranean sheet-web spider)
Subterranean - Crustacean	Acanthocyclops parasensitivus ((a copepod))
Subterranean - Crustacean	Caecidotea bicrenata bicrenata ((a cave obligate isopod))
Subterranean - Crustacean	Cambarus tenebrosus (Cavespring Crayfish)
Subterranean - Crustacean	Diacyclops sp. (Indiana Groundwater Copepod)
Subterranean - Crustacean	Diacyclops yeatmani (Yeatman's Groundwater Copepod)
Subterranean - Crustacean	Gammarus minus (Lesser spring amphipod)
Subterranean - Crustacean	Haplophthalmus danicus ((a terrestrial cave isopod))
Subterranean - Crustacean	Ligidium elrodii hancockensis ((a cave obligate isopod))
Subterranean - Crustacean	Megacyclops donaldsoni (Donaldson's cave copepod)
Subterranean - Crustacean	Miktoniscus barri ((a cave obligate isopod))
Subterranean - Crustacean	Miktoniscus medcofi (Medcof's terrestrial isopod)
Subterranean - Crustacean	Orconectes australis (Southern Cave Crayfish)
Subterranean - Crustacean	Pseudocandona jeanneli (Jeannel's Cave Ostracod)
Subterranean - Crustacean	Pseudocandona sp. (groundwater ostracods)
Subterranean - Crustacean	Stygobromus exilis (Central Kentucky Cave Obligate)
Subterranean - Crustacean	Stygobromus sp. 22 (Swamp River Cave Amphipod)
Subterranean - Crustacean	Stygobromus sp. 4 (Southern cave amphipod)
Subterranean - Fish	Typhlichthys subterraneus (Southern Cavefish)
Subterranean - Flatworm	Cambarincola alienus ((a cave obligate roundworm))
Subterranean - Flatworm	Sphalloplana percoeca ((a cave obligate planarian))
Subterranean - Gastropod	Carychium stygium (Cave Thorn)
Subterranean - Gastropod	Glyphyalinia specus (Hollow Glyph)
Subterranean - Gastropod	Helicodiscus barri (Raccoon Coil)
Subterranean - Gastropod	Helicodiscus hadenoecus (Cricket Coil)
Subterranean - Gastropod	Helicodiscus notius specus ((a cave snail))
Subterranean - Insect	Aleochara lucifuga ((a rove beetle))
Subterranean - Insect	Aleochara sp. ((a rove beetle))
Subterranean - Insect	Anillinus longiceps ((a cave obligate beetle))
Subterranean - Insect	Arrhopalites pavo ((a cave springtail))
Subterranean - Insect	Arrhopalites sp. 4 near lacuna ((undescribed cave springtail))
Subterranean - Insect	Atheta sp. ((a rove beetle))
Subterranean - Insect	Atheta trogliphila ((a trogliphilic rove beetle))
Subterranean - Insect	Batrissodes valentinei ((a cave obligate beetle))
Subterranean - Insect	Bembidion lacunarium (ground beetle)



<b>EASTERN HIGHLAND RIM PRAIRIE AND BARRENS COA GCN SPECIES (TN)</b>	
<b>Taxa Group</b>	<b>Scientific &amp; Common names</b>
Subterranean - Insect	Ceratophysella sp. (springtails)
Subterranean - Insect	Ceuthophilus sp. (cave crickets)
Subterranean - Insect	Hadenoeocus barri (Barr's cave cricket)
Subterranean - Insect	Lesteva pallipes (rove beetle)
Subterranean - Insect	Litocampa cookei (Cooke's Cave Dipluran)
Subterranean - Insect	Litocampa valentinei ((a cave obligate bristletail))
Subterranean - Insect	Macrocera nobilis (fungus gnat)
Subterranean - Insect	Megaselia cavernicola (cave hump-backed fly)
Subterranean - Insect	Pseudanophthalmus humeralis ((a cave obligate beetle))
Subterranean - Insect	Pseudanophthalmus intermedius (Intermediate cave beetle)
Subterranean - Insect	Pseudanophthalmus macradei ((a cave obligate beetle))
Subterranean - Insect	Pseudanophthalmus robustus ((a cave obligate beetle))
Subterranean - Insect	Pseudanophthalmus sp. 36 (Gunters Cave Beetle)
Subterranean - Insect	Pseudanophthalmus templetoni ((a cave obligate beetle))
Subterranean - Insect	Pseudanophthalmus tullahoma (Duck River Cave Beetle)
Subterranean - Insect	Pseudosinella aera ((a cave obligate springtail))
Subterranean - Insect	Pseudosinella christianseni (Christiansen's Cave Springtail)
Subterranean - Insect	Pseudosinella hirsuta (Hirsute Cave Springtail)
Subterranean - Insect	Pseudosinella pecki (Peck's cave springtail)
Subterranean - Insect	Pseudosinella spinosa (Spinose Cave Springtail)
Subterranean - Insect	Psyllipsocus ramburi ((a cave barklice))
Subterranean - Insect	Ptomaphagus hatchi (Hatch's cave fungus beetle)
Subterranean - Insect	Rhadine caudata (ground beetle)
Subterranean - Insect	Spelobia tenebrarum (Cave dung fly)
Subterranean - Insect	Subterrochus ferus (cave ant beetle)
Subterranean - Insect	Tomocerus bidentatus (Two-toothed springtail)
Subterranean - Insect	Tomocerus flavescens (Golden springtail)
Subterranean - Insect	Tomocerus missus (Relict cave springtail)
Subterranean - Insect	Trechus cumberlandus (Cumberland Ground Beetle)
Subterranean - Millipede	Cambala sp. (millipeds)
Subterranean - Millipede	Chaetaspis sp. (cave millipeds)
Subterranean - Millipede	Pseudotremia sp. (cave millipeds)
Subterranean - Millipede	Pseudotremia sp. 7 (Barr's cave milliped)
Subterranean - Millipede	Scoterpes jackdanieli ((a cave obligate millipede))
Subterranean - Millipede	Scoterpes tricorner ((a cave obligate millipede))
Subterranean - Millipede	Scoterpes ventus (Eastern Tennessee Cave Millipede)
Subterranean - Millipede	Tetracion tennesseensis ((a cave obligate millipede))

EASTERN HIGHLAND RIM PRAIRIE AND BARRENS COA HABITATS (TN)	
Terrestrial Habitat Type	Total acres of very high, high, and medium ranked habitat
<b>Natural habitats</b>	
Eastern Highland Rim Prairie and Barrens	61472
Southern Interior Low Plateau Dry-Mesic Oak Forest	32624
South-Central Interior Mesophytic Forest	16845
Southern Ridge and Valley / Cumberland Dry Calcareous Forest	11398
South-Central Interior Small Stream and Riparian	4598
Allegheny-Cumberland Dry Oak Forest and Woodland	2776
Southern Appalachian Low-Elevation Pine Forest	805
South-Central Interior Large Floodplain	204
<b>Semi-natural habitats</b>	
Pasture	30782
Cropland	10015
Old Field / Successional	6636
Forest Plantation	1739
<b>Aquatic Habitat Type</b>	
Aquatic Habitat Type	Total stream miles of very high, high, and medium ranked habitat
Headwaters and Streams	492
Small River	58