

# South Cumberland Plateau Conservation Opportunity Area



**The South Cumberland Plateau** is a mostly forested region whose elevation averages approximately 1804 feet (550m). The plateau escarpment is extremely dissected along the margins of the plateau, which are characterized by nearly vertical rock faces, rock outcrops, and boulder fields. These areas support a large number of caves and karst habitats due to the exposure of limestone bedrock. Karst habitats are extremely diverse -- with springs, seeps, and sinkholes -- and they support high numbers of unique species found nowhere else in the world.

Numerous species of Greatest Conservation Need (GCN) can be found throughout this Conservation Opportunity Area (COA). Wetlands support breeding populations of Mountain Chorus Frog and Four-toed Salamander, and wintering habitat for Golden Eagles. Populations of Eastern Woodrat and roosting sites for Eastern Small-footed Bats can be found along the Plateau escarpment, along with a species of land snail known from only 5 sites in the world. Caves support wintering populations of endangered Indiana and Gray Bats, and wet caves harbor the Tennessee Cave Salamander, Tennessee's state amphibian.

Varied threats affect these diverse habitats: headwater streams are susceptible to siltation and non-point source pollution; incompatible forestry practices can alter both terrestrial and aquatic habitats; and poorly planned housing developments can decrease, degrade, and fragment habitat.

## Public Lands within the COA

Battlecreek Wetland, Bear Hollow Mountain Wildlife Management Area (WMA), Chimneys State Natural Area (SNA), Cummings Cove, Falling Water Falls SNA, Fiery Gizzard, Foster Falls, Franklin State Forest (SF), Grundy Lakes, Hawkins Cover SNA, Hicks Gap SNA, Mr. & Mrs. Harry Lee Carter SNA, Natural Bridge SNA, North Chickamauga Gorge SNA, North Chickamauga Gorge WMA, Prentice Cooper SF & WMA, Savage Gulf SNA - Fiery Gizzard, Sequatchie Cave SNA, Walls of Jericho SNA



---

**The South Cumberland Plateau's diverse forest and karst habitats support numerous sensitive and unique species.**

---



Top to bottom: Walls of Jericho - Josh Campbell, TWRA; Cave Salamander, Tennessee's state amphibian - Dustin Thames, TWRA/next page: Eastern Woodrat nest - Bill Reeves, TWRA

# South Cumberland Plateau Conservation Opportunity Area

## Partnerships

TWRA will implement management strategies in areas on public lands that maintain or preserve current terrestrial and aquatic habitats and connectivity between habitats. TWRA will develop and expand partnerships with the U.S. Fish and Wildlife Service, the Office of Surface Mining, U.S. Army Corps of Engineers, Natural Resources Conservation Service/National Water Quality Initiative, the National Fish and Wildlife Foundation, Tennessee Valley Authority, Tennessee Dept. of Environment and Conservation, Tennessee Division of Forestry, The Nature Conservancy, Tennessee Parks and Greenways Foundation, The Land Trust for Tennessee, Univ. of the South, Univ. of Tennessee, and private landowners.

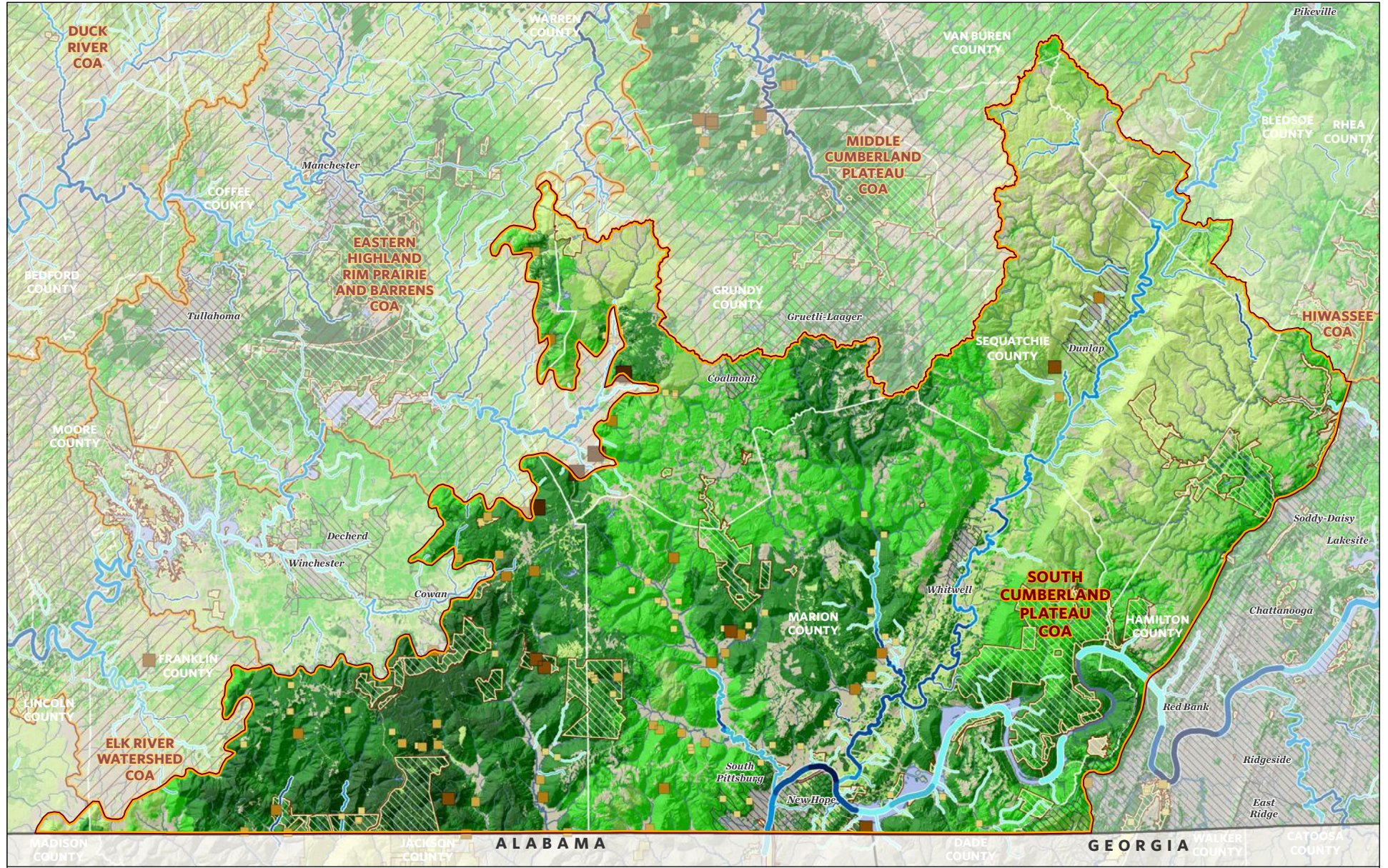


| Desired Change  | Units |
|---|-------|
| <b>+</b> Increase restoration of critical land units and aquatic resources on private lands using government-funded incentive programs  | acres |
| <b>-</b> Decrease acres of degraded forest/pine plantations through restoration and management to achieve appropriate ecological conditions.  | acres |
| <b>+</b> Restore acres or stream miles of habitat.  | miles |
| <b>✓</b> Develop and implement integrated pest management plan to aid in the control of native and exotic pests.  | acres |
| <b>+</b> Increase acres of habitat under permanent conservation management to increase habitat connectivity.  | acres |
| <b>+</b> Develop and/or participate in regional conservation planning initiatives sponsored by federal, state, and local agencies.  | plans |
| <b>-</b> Decrease the negative effects of development on GCN species and habitats by encouraging municipal and county governments to limit or regulate urban growth within critical units of aquatic, subterranean, and terrestrial habitats. | plans |

To learn more about the South Cumberland Plateau Conservation Opportunity Area, please contact: Chris Simpson, Wildlife Diversity Coordinator, Region 3 (931) 484-9571



# South Cumberland Plateau Conservation Opportunity Area



**Habitat Priority**

|           |   |              |   |                |   |                    |   |
|-----------|---|--------------|---|----------------|---|--------------------|---|
| Very High | <span style="display: inline-block; width: 10px; height: 10px; background-color: #800000; border: 1px solid black;"></span> | <b>Karst</b> | <span style="display: inline-block; width: 10px; height: 10px; background-color: #000080; border: 1px solid black;"></span> | <b>Aquatic</b> | <span style="display: inline-block; width: 10px; height: 10px; background-color: #008000; border: 1px solid black;"></span> | <b>Terrestrial</b> | <span style="display: inline-block; width: 10px; height: 10px; background-color: #008000; border: 1px solid black;"></span> |
| High      | <span style="display: inline-block; width: 10px; height: 10px; background-color: #800000; border: 1px solid black;"></span> |              | <span style="display: inline-block; width: 10px; height: 10px; background-color: #000080; border: 1px solid black;"></span> |                | <span style="display: inline-block; width: 10px; height: 10px; background-color: #008000; border: 1px solid black;"></span> |                    | <span style="display: inline-block; width: 10px; height: 10px; background-color: #008000; border: 1px solid black;"></span> |
| Medium    | <span style="display: inline-block; width: 10px; height: 10px; background-color: #800000; border: 1px solid black;"></span> |              | <span style="display: inline-block; width: 10px; height: 10px; background-color: #000080; border: 1px solid black;"></span> |                | <span style="display: inline-block; width: 10px; height: 10px; background-color: #008000; border: 1px solid black;"></span> |                    | <span style="display: inline-block; width: 10px; height: 10px; background-color: #008000; border: 1px solid black;"></span> |
| Low       | <span style="display: inline-block; width: 10px; height: 10px; background-color: #800000; border: 1px solid black;"></span> |              | <span style="display: inline-block; width: 10px; height: 10px; background-color: #000080; border: 1px solid black;"></span> |                | <span style="display: inline-block; width: 10px; height: 10px; background-color: #008000; border: 1px solid black;"></span> |                    | <span style="display: inline-block; width: 10px; height: 10px; background-color: #008000; border: 1px solid black;"></span> |
| Very Low  | <span style="display: inline-block; width: 10px; height: 10px; background-color: #800000; border: 1px solid black;"></span> |              | <span style="display: inline-block; width: 10px; height: 10px; background-color: #000080; border: 1px solid black;"></span> |                | <span style="display: inline-block; width: 10px; height: 10px; background-color: #008000; border: 1px solid black;"></span> |                    | <span style="display: inline-block; width: 10px; height: 10px; background-color: #008000; border: 1px solid black;"></span> |

**Conservation Opportunity Area**

Conservation Opportunity Area

Protected Land

**The Nature Conservancy**  
Protecting nature. Preserving life.





| SOUTH CUMBERLAND PLATEAU COA GCN SPECIES (TN) |  |
|---|--|
| Taxa Group                                    | Scientific & Common names                                    |
| Amphibian                                     | <i>Aneides aeneus</i> (Green Salamander)                     |
| Amphibian                                     | <i>Hemidactylium scutatum</i> (Four-toed Salamander)         |
| Amphibian                                     | <i>Hyla versicolor</i> (Gray Treefrog)                       |
| Amphibian                                     | <i>Pseudacris brachyphona</i> (Mountain Chorus Frog)         |
| Bat   | <i>Corynorhinus rafinesquii</i> (Rafinesque's Big-eared Bat) |
| Bat   | <i>Myotis austroriparius</i> (Southeastern Bat)              |
| Bat   | <i>Myotis grisescens</i> (Gray Bat)                          |
| Bat   | <i>Myotis leibii</i> (Eastern Small-footed Bat)              |
| Bat   | <i>Myotis lucifugus</i> (Little Brown Bat)                   |
| Bat   | <i>Myotis septentrionalis</i> (Northern Myotis)              |
| Bat   | <i>Myotis sodalis</i> (Indiana Bat)                          |
| Bat   | <i>Perimyotis subflavus</i> (Tri-colored Bat)                |
| Bird  | <i>Accipiter striatus</i> (Sharp-shinned Hawk)               |
| Bird  | <i>Aimophila aestivalis</i> (Bachman's Sparrow)              |
| Bird  | <i>Ammodramus henslowii</i> (Henslow's Sparrow)              |
| Bird  | <i>Ammodramus savannarum</i> (Grasshopper Sparrow)           |
| Bird  | <i>Anas rubripes</i> (American Black Duck)                   |
| Bird  | <i>Aquila chrysaetos</i> (Golden Eagle)                      |
| Bird  | <i>Bartramia longicauda</i> (Upland Sandpiper)               |
| Bird  | <i>Calidris himantopus</i> (Stilt Sandpiper)                 |
| Bird  | <i>Calidris pusilla</i> (Semipalmated Sandpiper)             |
| Bird  | <i>Caprimulgus carolinensis</i> (Chuck-will's-widow)         |
| Bird  | <i>Caprimulgus vociferus</i> (Whip-poor-will)                |
| Bird  | <i>Cardellina canadensis</i> (Canada Warbler)                |
| Bird  | <i>Chaetura pelagica</i> (Chimney Swift)                     |
| Bird  | <i>Chordeiles minor</i> (Common Nighthawk)                   |
| Bird  | <i>Circus cyaneus</i> (Northern Harrier)                     |
| Bird  | <i>Cistothorus platensis</i> (Sedge Wren)                    |
| Bird  | <i>Colinus virginianus</i> (Northern Bobwhite)               |
| Bird  | <i>Egretta caerulea</i> (Little Blue Heron)                  |
| Bird  | <i>Empidonax traillii</i> (Willow Flycatcher)                |
| Bird  | <i>Euphagus carolinus</i> (Rusty Blackbird)                  |
| Bird  | <i>Falco peregrinus</i> (Peregrine Falcon)                   |
| Bird  | <i>Geothlypis formosa</i> (Kentucky Warbler)                 |
| Bird  | <i>Grus americana</i> (Whooping Crane)                       |
| Bird  | <i>Haliaeetus leucocephalus</i> (Bald Eagle)                 |
| Bird  | <i>Helmitheros vermivorum</i> (Worm-eating Warbler)          |
| Bird  | <i>Hylocichla mustelina</i> (Wood Thrush)                    |
| Bird  | <i>Icteria virens</i> (Yellow-breasted Chat)                 |
| Bird  | <i>Icterus spurius</i> (Orchard Oriole)                      |
| Bird  | <i>Ictinia mississippiensis</i> (Mississippi Kite)           |
| Bird  | <i>Ixobrychus exilis</i> (Least Bittern)                     |
| Bird  | <i>Lanius ludovicianus</i> (Loggerhead Shrike)               |
| Bird  | <i>Limnothlypis swainsonii</i> (Swainson's Warbler)          |
| Bird  | <i>Limosa haemastica</i> (Hudsonian Godwit)                  |
| Bird  | <i>Melanerpes erythrocephalus</i> (Red-headed Woodpecker)    |
| Bird  | <i>Nycticorax nycticorax</i> (Black-crowned Night-heron)     |
| Bird  | <i>Parkesia motacilla</i> (Louisiana Waterthrush)            |
| Bird  | <i>Pluvialis dominica</i> (American Golden Plover)           |
| Bird  | <i>Protonotaria citrea</i> (Prothonotary Warbler)            |
| Bird  | <i>Riparia riparia</i> (Bank Swallow)                        |
| Bird  | <i>Scolopax minor</i> (American Woodcock)                    |
| Bird  | <i>Setophaga caerulea</i> (Black-throated Blue Warbler)      |
| Bird  | <i>Setophaga cerulea</i> (Cerulean Warbler)                  |

| SOUTH CUMBERLAND PLATEAU COA GCN SPECIES (TN) |   |
|---|---|
| Taxa Group                                    | Scientific & Common names                         |
| Bird  | Setophaga discolor (Prairie Warbler)              |
| Bird  | Setophaga dominica (Yellow-throated Warbler)      |
| Bird  | Setophaga fusca (Blackburnian Warbler)            |
| Bird  | Sitta pusilla (Brown-headed Nuthatch)             |
| Bird  | Sturnella magna (Eastern Meadowlark)              |
| Bird  | Tryngites subruficollis (Buff-breasted Sandpiper) |
| Bird  | Tyto alba (Barn Owl)                              |
| Bird  | Vermivora chrysoptera (Golden-winged Warbler)     |
| Bird  | Vermivora cyanoptera (Blue-winged Warbler)        |
| Bivalve                                       | Alasmidonta viridis (Slippershell Mussel)         |
| Bivalve                                       | Fusconaia cor (Shiny Pigtoe)                      |
| Bivalve                                       | Lampsilis abrupta (Pink Mucket)                   |
| Bivalve                                       | Lampsilis virescens (Alabama Lampmussel)          |
| Bivalve                                       | Lasmigona holstonia (Tennessee Heelsplitter)      |
| Bivalve                                       | Ligumia recta (Black Sandshell)                   |
| Bivalve                                       | Medionidus conradicus (Cumberland Moccasinshell)  |
| Bivalve                                       | Obovaria subrotunda (Round Hickorynut)            |
| Bivalve                                       | Pleurobema oviforme (Tennessee Clubshell)         |
| Bivalve                                       | Pleuronaia barnesiana (Tennessee Pigtoe)          |
| Bivalve                                       | Pleuronaia dolabelloides (Slabside Pearlymussel)  |
| Bivalve                                       | Toxolasma cylindrellus (Pale Lilliput)            |
| Bivalve                                       | Toxolasma lividum (Purple Lilliput)               |
| Bivalve                                       | Villosa iris (Rainbow)                            |
| Bivalve                                       | Villosa taeniata (Painted Creekshell)             |
| Bivalve                                       | Villosa umbrans (Coosa Creekshell)                |
| Crustacean                                    | Cambarus pristinus (Pristine Crayfish)            |
| Fish  | Chrosomus saylori (Laurel Dace)                   |
| Fish  | Chrosomus tennesseensis (Tennessee Dace)          |
| Fish  | Erimystax insignis (Blotched Chub)                |
| Fish  | Etheostoma denoncourti (Golden Darter)            |
| Fish  | Etheostoma tippecanoe (Tippecanoe Darter)         |
| Fish  | Fundulus julisia (Barrens Topminnow)              |
| Fish  | Hemitremia flammea (Flame Chub)                   |
| Fish  | Notropis rubellus (Rosyface Shiner)               |
| Fish  | Percina burtoni (Blotchside Logperch)             |
| Fish  | Percina tanasi (Snail Darter)                     |
| Gastropod                                     | Anguispira alabama (Alabama Tigersnail)           |
| Gastropod                                     | Anguispira picta (Painted Tigersnail)             |
| Gastropod                                     | Athearnia anthonyi (Anthony's Riversnail)         |
| Gastropod                                     | Inflectarius smithi (Alabama Shagreen)            |
| Gastropod                                     | Io fluvialis (Spiny Riversnail)                   |
| Gastropod                                     | Leptoxis virgata (Smooth Mudalia)                 |
| Gastropod                                     | Lithasia armigera (Armored Rocksnail)             |
| Gastropod                                     | Lithasia lima (Warty Rocksnail)                   |
| Gastropod                                     | Marstonia ogmorhappe (Royal Springsnail)          |
| Gastropod                                     | Mesodon sanus (Squat Globelet)                    |
| Gastropod                                     | Paravitrea tantilla (Teasing Supercoil)           |
| Gastropod                                     | Pleurocera corpulenta (Corpulent Hornsnail)       |
| Gastropod                                     | Somatogyrus aureus (Golden Pebblesnail)           |
| Gastropod                                     | Zonitoides lateumbilicatus (Striate Gloss)        |
| Insect  | Speyeria diana (Diana Fritillary)                 |
| Mammal  | Neotoma magister (Allegheny Woodrat)              |
| Mammal  | Ochrotomys nuttalli (Golden Mouse)                |
| Mammal  | Sorex cinereus (Cinereus Shrew)                   |

| SOUTH CUMBERLAND PLATEAU COA GCN SPECIES (TN) |   |
|---|---|
| Taxa Group                                    | Scientific & Common names   |
| Mammal  | <i>Sorex fumeus</i> (Smoky Shrew)   |
| Mammal  | <i>Sorex hoyi</i> (American Pygmy Shrew)  |
| Mammal  | <i>Sorex longirostris</i> (Southeastern Shrew)                                  |
| Plant   | <i>Allium tricoccum</i> (Ramps)   |
| Plant   | <i>Amelanchier sanguinea</i> (Roundleaf Shadbush)                               |
| Plant   | <i>Apios priceana</i> (Price's Potato-bean)                                     |
| Plant   | <i>Aureolaria patula</i> (Spreading False-foxtail)                              |
| Plant   | <i>Berberis canadensis</i> (American Barberry)                                  |
| Plant   | <i>Cardamine flagellifera</i> (Running Bittercress)                             |
| Plant   | <i>Castanea dentata</i> (American Chestnut)                                     |
| Plant   | <i>Clematis glaucophylla</i> (White-leaved Leatherflower)                       |
| Plant   | <i>Clematis morefieldii</i> (Morefield's Leather-flower)                        |
| Plant   | <i>Cotinus obovatus</i> (American Smoketree)                                    |
| Plant   | <i>Danthonia epilis</i> (Bog Oat-grass)   |
| Plant   | <i>Desmodium ochroleucum</i> (Creamflower Tick-trefoil)                         |
| Plant   | <i>Diervilla lonicera</i> (Northern Bush-honeysuckle)                           |
| Plant   | <i>Diervilla sessilifolia</i> var. <i>rivularis</i> (Mountain Bush-honeysuckle) |
| Plant   | <i>Gelsemium sempervirens</i> (Yellow Jessamine)                                |
| Plant   | <i>Helianthus eggertii</i> (Eggert's Sunflower)                                 |
| Plant   | <i>Hottonia inflata</i> (Featherfoil)   |
| Plant   | <i>Hydrastis canadensis</i> (Goldenseal)  |
| Plant   | <i>Hypericum adpressum</i> (Creeping St. John's-wort)                           |
| Plant   | <i>Isotria medeoloides</i> (Small Whorled Pogonia)                              |
| Plant   | <i>Juglans cinerea</i> (Butternut)  |
| Plant   | <i>Lejeunea blomquistii</i> (Blomquist Leafy Liverwort)                         |
| Plant   | <i>Lejeunea sharpii</i> (Sharp's Lejeunea)                                      |
| Plant   | <i>Lilium canadense</i> (Canada Lily)   |
| Plant   | <i>Lilium michiganense</i> (Michigan Lily)                                      |
| Plant   | <i>Liparis loeselii</i> (Fen Orchid)  |
| Plant   | <i>Lonicera flava</i> (Yellow Honeysuckle)                                      |
| Plant   | <i>Lysimachia fraseri</i> (Fraser's Loosestrife)                                |
| Plant   | <i>Metzgeria uncigera</i> (Metzgeria)   |
| Plant   | <i>Microlejeunea globosa</i> (Cardot's Lejeunea)                                |
| Plant   | <i>Nestronia umbellula</i> (Nestronia)  |
| Plant   | <i>Neviusia alabamensis</i> (Alabama Snow-wreath)                               |
| Plant   | <i>Onosmodium hispidissimum</i> (Shaggy False Gromwell)                         |
| Plant   | <i>Onosmodium molle</i> ssp. <i>subsetosum</i> (Smooth False Gromwell)          |
| Plant   | <i>Panax quinquefolius</i> (American Ginseng)                                   |
| Plant   | <i>Paronychia argyrocoma</i> (Silverling)                                       |
| Plant   | <i>Pellia appalachiana</i> ((a liverwort))                                      |
| Plant   | <i>Plantago cordata</i> (Heart-leaved Plantain)                                 |
| Plant   | <i>Radula voluta</i> ((a liverwort))  |
| Plant   | <i>Sabatia capitata</i> (Cumberland Rose Gentian)                               |
| Plant   | <i>Scutellaria montana</i> (Large-flowered Skullcap)                            |
| Plant   | <i>Sedum nevii</i> (Nevius' Stonecrop)  |
| Plant   | <i>Silphium brachiatum</i> (Cumberland Rosinweed)                               |
| Plant   | <i>Spiraea virginiana</i> (Virginia Spiraea)                                    |
| Plant   | <i>Thermopsis mollis</i> (Allegheny Mountain golden banner)                     |
| Plant   | <i>Trichomanes boschianum</i> (Bristle-fern)                                    |
| Plant   | <i>Trillium pusillum</i> (Least Trillium)                                       |
| Plant   | <i>Viburnum bracteatum</i> (Limerock Arrowwood)                                 |
| Plant   | <i>Viola tripartita</i> var. <i>tripartita</i> (Three-parted Violet)            |
| Reptile                                       | <i>Anolis carolinensis</i> (Green Anole)  |
| Reptile                                       | <i>Anolis carolinensis</i> (Green Anole)  |

| SOUTH CUMBERLAND PLATEAU COA GCN SPECIES (TN) |   |
|---|---|
| Taxa Group                                    | Scientific & Common names   |
| Reptile                                       | <i>Crotalus horridus</i> (Timber Rattlesnake)                           |
| Reptile                                       | <i>Crotalus horridus</i> (Timber Rattlesnake)                           |
| Reptile                                       | <i>Heterodon platirhinos</i> (Eastern Hognosed Snake)                   |
| Reptile                                       | <i>Ophisaurus attenuatus longicaudus</i> (Eastern Slender Glass Lizard) |
| Reptile                                       | <i>Pituophis melanoleucus melanoleucus</i> (Northern Pinesnake)         |
| Reptile                                       | <i>Terrapene carolina</i> (Eastern Box Turtle)                          |
| Subterranean - Amphibian                      | <i>Gyrinophilus palleucus</i> (Tennessee Cave Salamander)               |
| Subterranean - Amphibian                      | <i>Gyrinophilus palleucus necturoides</i> (Big Mouth Cave Salamander)   |
| Subterranean - Amphibian                      | <i>Gyrinophilus palleucus palleucus</i> (Pale Salamander)               |
| Subterranean - Arachnid                       | <i>Agyneta</i> sp. (Trussell Cave Sheet-web Spider)                     |
| Subterranean - Arachnid                       | <i>Anthrobia mammothia</i> ((a cave obligate spider))                   |
| Subterranean - Arachnid                       | <i>Apochthonius</i> sp. ((a pseudoscorpion))                            |
| Subterranean - Arachnid                       | <i>Bathypantes pallidus</i> (Pallid Sheet-web Spider)                   |
| Subterranean - Arachnid                       | <i>Bishopella</i> sp. Probably <i>laciniosa</i> (harvestman)            |
| Subterranean - Arachnid                       | <i>Calymmaria persica</i> (Cave-loving funnel-web spider)               |
| Subterranean - Arachnid                       | <i>Chitrella archeri</i> ((a cave obligate pseudoscorpion))             |
| Subterranean - Arachnid                       | <i>Cicurina breviararia</i> (funnel-web spider)                         |
| Subterranean - Arachnid                       | <i>Cicurina placida</i> (funnel-web spider)                             |
| Subterranean - Arachnid                       | <i>Erebomaster</i> sp. (harvestmen)                                     |
| Subterranean - Arachnid                       | <i>Hesperochernes mirabilis</i> (Southeastern Cave Pseudoscorpion)      |
| Subterranean - Arachnid                       | <i>Kleptochthonius magnus</i> ((a cave obligate pseudoscorpion))        |
| Subterranean - Arachnid                       | <i>Kleptochthonius</i> sp. (Round Cove cave pseudoscorpion)             |
| Subterranean - Arachnid                       | <i>Kleptochthonius tantalus</i> ((a cave obligate pseudoscorpion))      |
| Subterranean - Arachnid                       | <i>Liocranoides archeri</i> (Archer's two-clawed spider)                |
| Subterranean - Arachnid                       | <i>Liocranoides</i> sp. (Two-clawed spider)                             |
| Subterranean - Arachnid                       | <i>Maymena ambita</i> (Minute cave spider)                              |
| Subterranean - Arachnid                       | <i>Meta ovalis</i> (American cave orb weaver)                           |
| Subterranean - Arachnid                       | <i>Microcreagris nickajackensis</i> (Nickajack cave pseudoscorpion)     |
| Subterranean - Arachnid                       | <i>Nesticus barri</i> ((a cave obligate spider))                        |
| Subterranean - Arachnid                       | <i>Nesticus furtivus</i> (Crystal Caverns Cave Spider)                  |
| Subterranean - Arachnid                       | <i>Nesticus pecki</i> (Peck's cave spider)                              |
| Subterranean - Arachnid                       | <i>Nesticus valentinei</i> (Valentine's Cave Spider)                    |
| Subterranean - Arachnid                       | <i>Oreonetides</i> sp. (cave sheet-web spiders)                         |
| Subterranean - Arachnid                       | <i>Phalangodes appalachius</i> (Appalachian Cave Harvestman)            |
| Subterranean - Arachnid                       | <i>Phalangodes</i> sp. (cave harvestmen)                                |
| Subterranean - Arachnid                       | <i>Phanetta subterranea</i> (Subterranean sheet-web spider)             |
| Subterranean - Arachnid                       | <i>Tyrannochthonius fiskei</i> ((a cave obligate pseudoscorpion))       |
| Subterranean - Arachnid                       | <i>Tyrannochthonius halopotamus</i> (Salt River cave pseudoscorpion)    |
| Subterranean - Crustacean                     | <i>Acanthocyclops parasensitivus</i> ((a copepod))                      |
| Subterranean - Crustacean                     | <i>Caecidotea bicrenata</i> ((a cave obligate isopod))                  |
| Subterranean - Crustacean                     | <i>Caecidotea bicrenata bicrenata</i> ((a cave obligate isopod))        |
| Subterranean - Crustacean                     | <i>Caecidotea nickajackensis</i> (Nickajack Cave Isopod)                |
| Subterranean - Crustacean                     | <i>Caecidotea richardsonae</i> (Tennessee Valley Cave Isopod)           |
| Subterranean - Crustacean                     | <i>Caecidotea</i> sp. (cave isopods)                                    |
| Subterranean - Crustacean                     | <i>Cambarus hamulatus</i> (Prickly Cave Crayfish)                       |
| Subterranean - Crustacean                     | <i>Cambarus tenebrosus</i> (Cavespring Crayfish)                        |
| Subterranean - Crustacean                     | <i>Crangonyx antennatus</i> (Appalachian cave amphipod)                 |
| Subterranean - Crustacean                     | <i>Dactylocythere steevesi</i> ((a cave obligate shrimp))               |
| Subterranean - Crustacean                     | <i>Diacyclops</i> sp. (Indiana Groundwater Copepod)                     |
| Subterranean - Crustacean                     | <i>Diacyclops yeatmani</i> (Yeatman's Groundwater Copepod)              |
| Subterranean - Crustacean                     | <i>Gammarus minus</i> (Lesser spring amphipod)                          |
| Subterranean - Crustacean                     | <i>Haplophthalmus danicus</i> ((a terrestrial cave isopod))             |
| Subterranean - Crustacean                     | <i>Ligidium elrodii hancockensis</i> ((a cave obligate isopod))         |
| Subterranean - Crustacean                     | <i>Miktoniscus barri</i> ((a cave obligate isopod))                     |



| SOUTH CUMBERLAND PLATEAU COA GCN SPECIES (TN) |  |
|---|--|
| Taxa Group                                    | Scientific & Common names                                |
| Subterranean - Crustacean                     | Miktoniscus medcofi (Medcof's terrestrial isopod)        |
| Subterranean - Crustacean                     | Orconectes australis (Southern Cave Crayfish)            |
| Subterranean - Crustacean                     | Pseudocandona jeanneli (Jeannel's Cave Ostracod)         |
| Subterranean - Crustacean                     | Pseudocandona sp. (groundwater ostracods)                |
| Subterranean - Crustacean                     | Stygobromus dicksoni ((a cave obligate amphipod))        |
| Subterranean - Crustacean                     | Stygobromus exilis (Central Kentucky Cave Obligate)      |
| Subterranean - Crustacean                     | Stygobromus sp. (cave amphipods)                         |
| Subterranean - Crustacean                     | Stygobromus sp. 22 (Swamp River Cave Amphipod)           |
| Subterranean - Crustacean                     | Stygobromus sp. 34 ((a cave obligate amphipod))          |
| Subterranean - Crustacean                     | Stygobromus sp. 4 (Southern cave amphipod)               |
| Subterranean - Crustacean                     | Stygobromus vitreus ((a cave obligate amphipod))         |
| Subterranean - Fish                           | Typhlichthys subterraneus (Southern Cavefish)            |
| Subterranean - Flatworm                       | Cambarincola alienus ((a cave obligate roundworm))       |
| Subterranean - Flatworm                       | Eremidrilus allegheniensis ((a cave obligate roundworm)) |
| Subterranean - Flatworm                       | Sphalloplana percoeca ((a cave obligate planarian))      |
| Subterranean - Gastropod                      | Carychium exile (Ice Thorn)                              |
| Subterranean - Gastropod                      | Carychium stygium (Cave Thorn)                           |
| Subterranean - Gastropod                      | Glyphyalinia sp. (terrestrial snails)                    |
| Subterranean - Gastropod                      | Glyphyalinia specus (Hollow Glyph)                       |
| Subterranean - Gastropod                      | Glyphyalinia wheatleyi (Wheatley's glyph)                |
| Subterranean - Gastropod                      | Helicodiscus barri (Raccoon Coil)                        |
| Subterranean - Gastropod                      | Helicodiscus hadenoecus (Cricket Coil)                   |
| Subterranean - Gastropod                      | Helicodiscus notius specus ((a cave snail))              |
| Subterranean - Insect                         | Aleochara lucifuga ((a rove beetle))                     |
| Subterranean - Insect                         | Aleochara sp. ((a rove beetle))                          |
| Subterranean - Insect                         | Aloconota insecta ((a rove beetle))                      |
| Subterranean - Insect                         | Anillinus longiceps ((a cave obligate beetle))           |
| Subterranean - Insect                         | Anillinus sp. ((a ground beetle))                        |
| Subterranean - Insect                         | Arrhopalites pavo ((a cave springtail))                  |
| Subterranean - Insect                         | Arrhopalites pygmaeus ((a springtail))                   |
| Subterranean - Insect                         | Atheta annexa ((a rove beetle))                          |
| Subterranean - Insect                         | Atheta sp. ((a rove beetle))                             |
| Subterranean - Insect                         | Atheta trogliphila ((a trogliphilic rove beetle))        |
| Subterranean - Insect                         | Batriasymmodes spelaeus ((a cave obligate beetle))       |
| Subterranean - Insect                         | Batrisodes valentinei ((a cave obligate beetle))         |
| Subterranean - Insect                         | Bembidion lacunarium (ground beetle)                     |
| Subterranean - Insect                         | Ceuthophilus sp. (cave crickets)                         |
| Subterranean - Insect                         | Euhadenoecus puteaus (cave cricket)                      |
| Subterranean - Insect                         | Hadenoecini sp. (cave crickets)                          |
| Subterranean - Insect                         | Hadenoecus barri (Barr's cave cricket)                   |
| Subterranean - Insect                         | Hadenoecus jonesi (Jones' cave cricket)                  |
| Subterranean - Insect                         | Lesteva pallipes (rove beetle)                           |
| Subterranean - Insect                         | Litocampa cookei (Cooke's Cave Dipluran)                 |
| Subterranean - Insect                         | Litocampa sp. ((bristletails))                           |
| Subterranean - Insect                         | Litocampa sp. 5 (Rumbling Falls Cave Dipluran)           |
| Subterranean - Insect                         | Litocampa valentinei ((a cave obligate bristletail))     |
| Subterranean - Insect                         | Macrocera nobilis (fungus gnat)                          |
| Subterranean - Insect                         | Megaselia cavernicola (cave hump-backed fly)             |
| Subterranean - Insect                         | Pseudanophthalmus digitus ((a cave obligate beetle))     |
| Subterranean - Insect                         | Pseudanophthalmus fulleri ((a cave obligate beetle))     |
| Subterranean - Insect                         | Pseudanophthalmus humeralis ((a cave obligate beetle))   |
| Subterranean - Insect                         | Pseudanophthalmus intermedius (Intermediate cave beetle) |
| Subterranean - Insect                         | Pseudanophthalmus nickajackensis (Nickajack Cave Beetle) |
| Subterranean - Insect                         | Pseudanophthalmus sp. ((a cave obligate beetle))         |

| <b>SOUTH CUMBERLAND PLATEAU COA GCN SPECIES (TN)</b> |   |
|--|---|
| <b>Taxa Group</b>                                    | <b>Scientific &amp; Common names</b>                                |
| Subterranean - Insect                                | <i>Pseudanophthalmus</i> sp. (Keyhole cave beetle)                  |
| Subterranean - Insect                                | <i>Pseudanophthalmus</i> sp. (Wilmoth cave beetle)                  |
| Subterranean - Insect                                | <i>Pseudanophthalmus ventus</i> (Blowing Cave Beetle)               |
| Subterranean - Insect                                | <i>Pseudosinella aera</i> ((a cave obligate springtail))            |
| Subterranean - Insect                                | <i>Pseudosinella</i> cf. <i>nata</i> ((a cave springtail))          |
| Subterranean - Insect                                | <i>Pseudosinella christianseni</i> (Christiansen's Cave Springtail) |
| Subterranean - Insect                                | <i>Pseudosinella collina</i> ((a springtail))                       |
| Subterranean - Insect                                | <i>Pseudosinella hirsuta</i> (Hirsute Cave Springtail)              |
| Subterranean - Insect                                | <i>Pseudosinella pecki</i> (Peck's cave springtail)                 |
| Subterranean - Insect                                | <i>Pseudosinella spinosa</i> (Spinose Cave Springtail)              |
| Subterranean - Insect                                | <i>Psyllipsocus ramburi</i> ((a cave barklice))                     |
| Subterranean - Insect                                | <i>Ptomaphagus chromolithus</i> ((a cave obligate beetle))          |
| Subterranean - Insect                                | <i>Ptomaphagus hatchi</i> (Hatch's cave fungus beetle)              |
| Subterranean - Insect                                | <i>Rhadine caudata</i> (ground beetle)                              |
| Subterranean - Insect                                | <i>Speleochus steevesi</i> ((a cave obligate beetle))               |
| Subterranean - Insect                                | <i>Spelobia tenebrarum</i> (Cave dung fly)                          |
| Subterranean - Insect                                | <i>Subterrochus ferus</i> (cave ant beetle)                         |
| Subterranean - Insect                                | <i>Tomocerus bidentatus</i> (Two-toothed springtail)                |
| Subterranean - Insect                                | <i>Tomocerus dubius</i> (springtail)                                |
| Subterranean - Insect                                | <i>Tomocerus flavescens</i> (Golden springtail)                     |
| Subterranean - Insect                                | <i>Tomocerus missus</i> (Relict cave springtail)                    |
| Subterranean - Insect                                | <i>Trechus cumberlandus</i> (Cumberland Ground Beetle)              |
| Subterranean - Millipede                             | <i>Ameractis satis</i> ((a cave obligate milliped))                 |
| Subterranean - Millipede                             | <i>Cambala</i> sp. (millipeds)                                      |
| Subterranean - Millipede                             | <i>Chaetaspis</i> sp. (cave millipeds)                              |
| Subterranean - Millipede                             | <i>Ophiulus pilosus</i> ((a millipede))                             |
| Subterranean - Millipede                             | <i>Pseudotremia eburnea</i> ((a cave obligate millipede))           |
| Subterranean - Millipede                             | <i>Pseudotremia minos</i> (Russell cave milliped)                   |
| Subterranean - Millipede                             | <i>Pseudotremia rhadamanthus</i> ((a cave obligate millipede))      |
| Subterranean - Millipede                             | <i>Pseudotremia</i> sp. (cave millipeds)                            |
| Subterranean - Millipede                             | <i>Pseudotremia</i> sp. 7 (Barr's cave milliped)                    |
| Subterranean - Millipede                             | <i>Pseudotremia</i> sp. 8 (Skylight cave milliped)                  |
| Subterranean - Millipede                             | <i>Pseudotremia</i> sp. 9 (Holliday's cave milliped)                |
| Subterranean - Millipede                             | <i>Scoterpes</i> sp. (cave millipeds)                               |
| Subterranean - Millipede                             | <i>Scoterpes</i> sp. (cave millipeds)                               |
| Subterranean - Millipede                             | <i>Scoterpes ventus</i> (Eastern Tennessee Cave Millipede)          |
| Subterranean - Millipede                             | <i>Tetracion jonesi</i> ((a cave obligate millipede))               |
| Subterranean - Millipede                             | <i>Tetracion tennesseensis</i> ((a cave obligate millipede))        |

| SOUTH CUMBERLAND PLATEAU COA HABITATS (TN)                   |  |
|--|--|
| Terrestrial Habitat Type                                     | Total acres of very high, high, and medium ranked habitat        |
| <b>Natural habitats</b>                                      |  |
| Southern Ridge and Valley / Cumberland Dry Calcareous Forest | 290875   |
| South-Central Interior Mesophytic Forest                     | 116644   |
| Allegheny-Cumberland Dry Oak Forest and Woodland             | 39952  |
| Southern Appalachian Low-Elevation Pine Forest               | 17440  |
| Southern Interior Low Plateau Dry-Mesic Oak Forest           | 4296   |
| South-Central Interior Small Stream and Riparian             | 1941   |
| Cumberland Acidic Cliff and Rockhouse                        | 1198   |
| South-Central Interior Large Floodplain                      | 573  |
| Cumberland Riverscour  | 141  |
| Southern Interior Calcareous Cliff                           | 1  |
| <b>Semi-natural habitats</b>                                 |  |
| Old Field / Successional                                     | 2364   |
| Pasture  | 1728   |
| Cropland   | 652  |
|  |  |
|  |  |
| Aquatic Habitat Type   | Total stream miles of very high, high, and medium ranked habitat |
| Headwaters and Streams                                       | 42   |
| Small River  | 47   |
| Medium River   | 7  |
| Large River  | 8  |