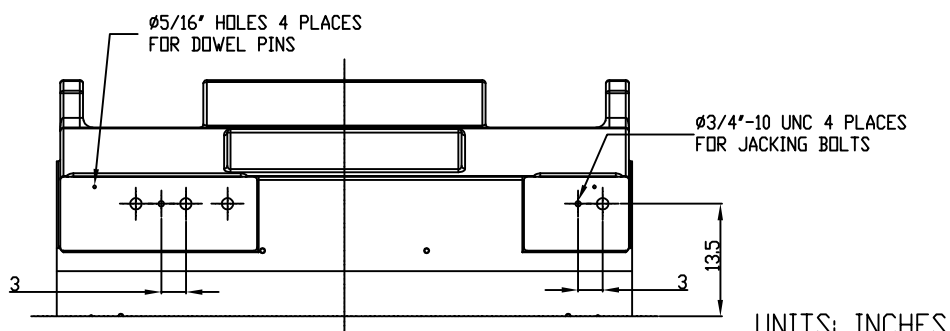
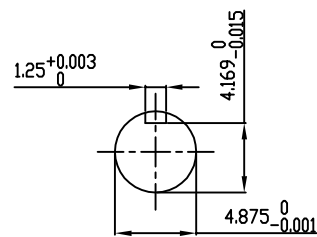


TECHNICAL INFORMATION

1. BEARING LUBRICATION DE: TURBINE OIL ISO VG32
ODE: TURBINE OIL ISO VG32
2. BEARING TYPE DE: M11-125 INS
ODE: M11-125 INS
3. WINDING TEMP. DETECTORS
NUMBER AND TYPE: 6xRTD(Pt0°C-100ohm)
LOCATION: IN STATOR SLOT
4. BEARING TEMP. DETECTORS
NUMBER AND TYPE: _____
5. SPACE HEATER 1 PHASE
VOLTS: 120 WATTS: 800
6. ROTATION: CCW VIEWED FROM NON DRIVE END
THIS MOTOR IS UNI DIRECTIONAL
7. MOTOR PAINT COLOR: GRAY
8. APPROX. WEIGHT: 14,000 Lbs
9. ACCESORIES: _____

**PRELIMINARY
FOR QUOTATION ONLY
DO NOT BUILD
FROM THIS DRAWING**



UNITS: INCHES

DRAWING LIST				MOTOR OUTLINE FOR THREE PHASE INDUCTION MOTOR						
MAIN TERMINAL BOX 130P-7550-68				CUSTOMER NAME		P.O. NO.		MOTOR TAG NO.		
AUX TERMINAL BOX FOR				OUTPUT	POLE	VOLTAGE	FREQUENCY	FULL LOAD SPEED		TOSHIBA MODEL NO.
SPACE HEATER	139-0052-01			HP	4	V	Hz	(min ⁻¹)		
R.T.D.	139-0052-04			TYPE	FORM	INS. CLASS	RATING	FRAME	S.F.	ENCLOSURE
THERMISTOR	N/A					F	CONT.	6810US		WP-II
0 FIRST ISSUE				TOSHIBA INTERNATIONAL CORPORATION HOUSTON, TEXAS U.S.A.						
NO. REVISION				BY	DATE	DATE	DATE	DATE	DRAWING NO.:	REV.
PRODUCTION # N/A				BCS	11/10/10	11/10/10	11/10/10	11/10/10	MDSL0087-66	2