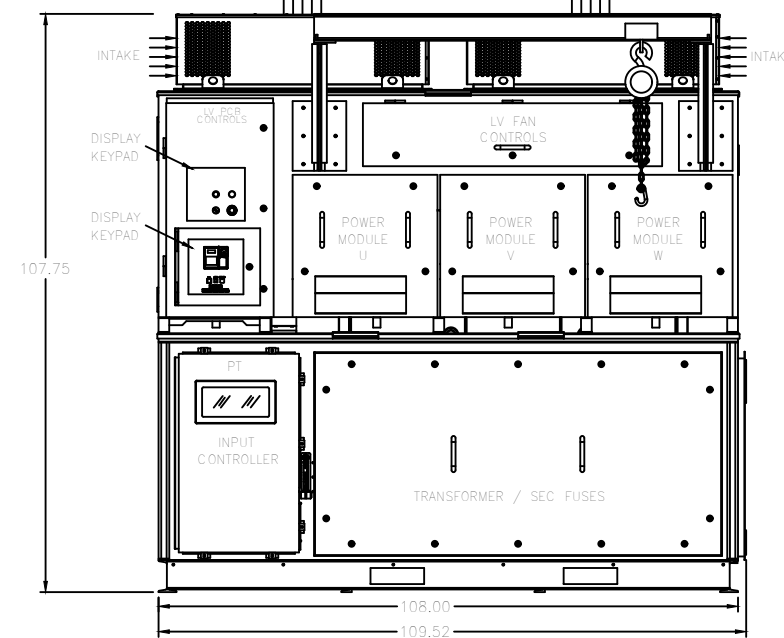
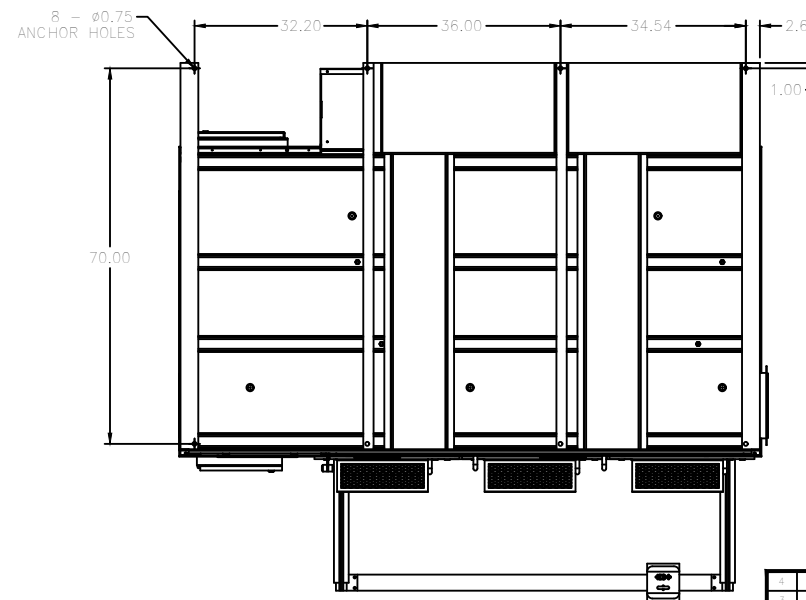


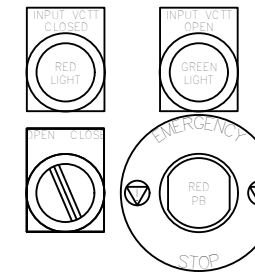
TOP VIEW



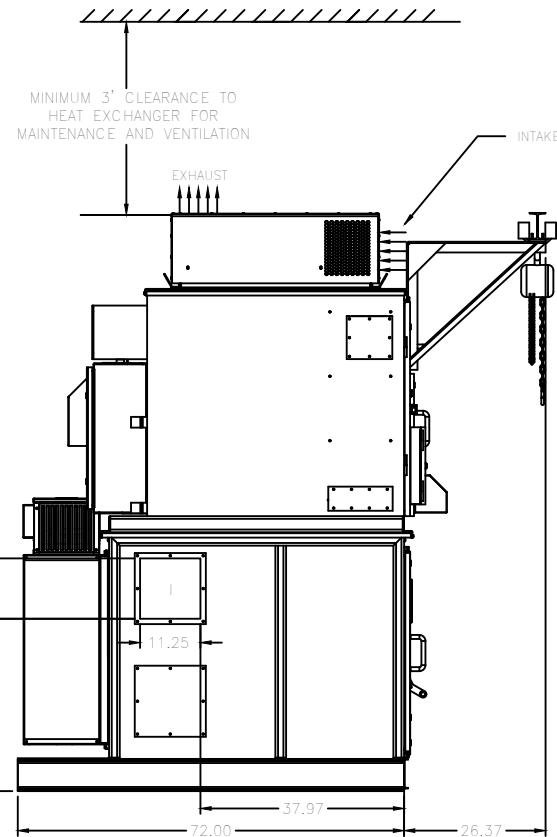
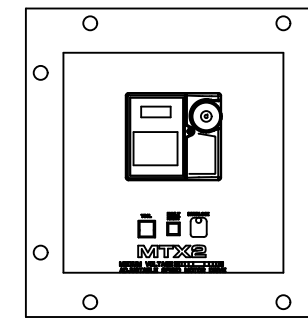
FRONT VIEW



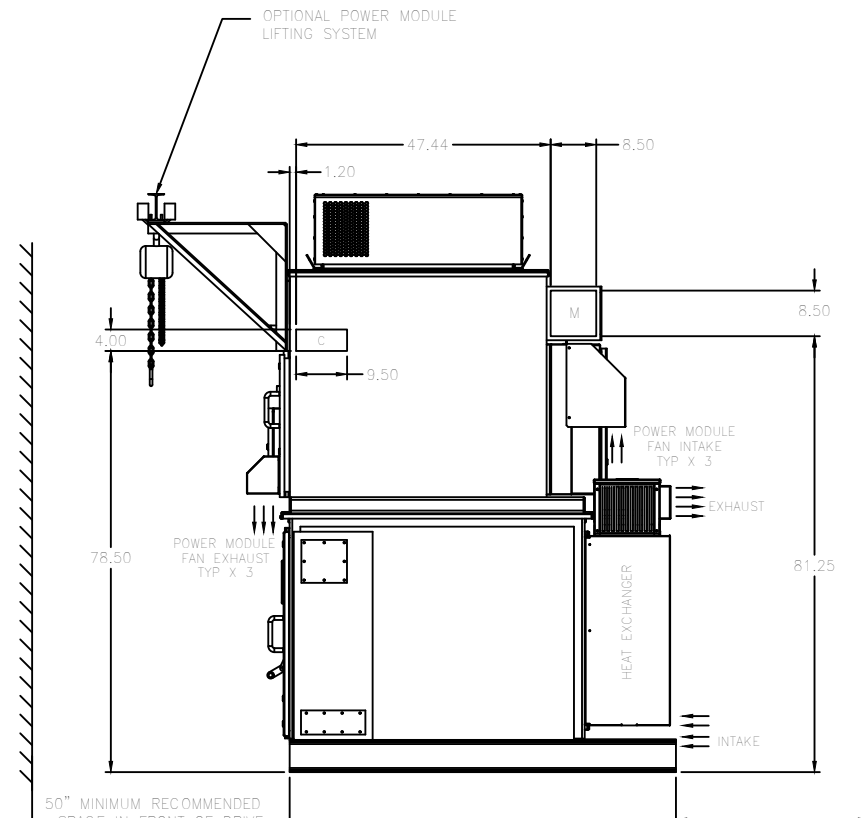
FLOOR PLAN VIEW



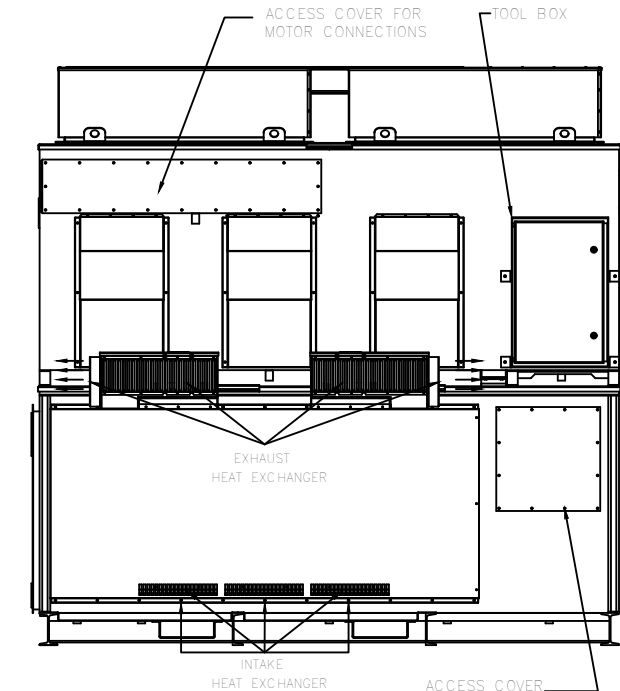
DETAIL OF PILOT DEVICES AND KEYPAD



LH END VIEW



RH END VIEW



REAR VIEW

	500HP	1000HP	1250HP	1500HP
INVERTER CUBICLE	4600 lbs	4600 lbs	4600 lbs	4600 lbs
TRANSFORMER CUBICLE	9000 lbs	10700 lbs	11700 lbs	13300 lbs

TOTAL UNIT WEIGHT	500HP	1000HP	1250HP	1500HP
	13600lbs	15300lbs	16,300 lbs	17,900 lbs

CABLE TERMINATIONS			
ENTRY	INCOMING CABLES	MOTOR LEADS	CONTROL WIRE
LH END	I	-	-
RH END	-	M	C

INCOMING AND MOTOR TERMINATIONS USE NEMA 4-HOLE PATTERN

- NOTES
- ENCLOSURE: TYPE 3R, IP45
 - FINISH: STAINLESS STEEL
 - WEIGHT IS APPROXIMATE
 - ALL DIMS ARE IN INCHES
 - COMPLETE DRIVE SYSTEM (TRANSFORMER CUBICLE & INVERTER CUBICLE) SHIPS TOGETHER
 - CUBICLES MUST BE LIFTED FROM THE BOTTOM USING A FORKLIFT. NO LIFTING EYES ON TOP.
 - THE POWER MODULE LIFTING IS AN OPTION

REV	DATE	DESCRIPTION	BY	CHK	APP
1					
2					
3					
4					

TOSHIBA
TOSHIBA INTERNATIONAL CORPORATION

THIS MATERIAL IS THE EXCLUSIVE PROPERTY OF TOSHIBA INTERNATIONAL CORPORATION AND SHALL NOT BE REPRODUCED, USED, OR DISCLOSED TO OTHERS UNLESS PRIOR WRITTEN AUTHORIZATION IS OBTAINED.

TITLE: ENCLOSURE OUTLINE - 1500HP, 4160V
MTX2-15 - STACKED DRIVE

CUSTOMER: **FOR REFERENCE ONLY** PROJECT NUMBER: DRAWING NUMBER: MTX2154A30

REVISION: SCALE: NTS