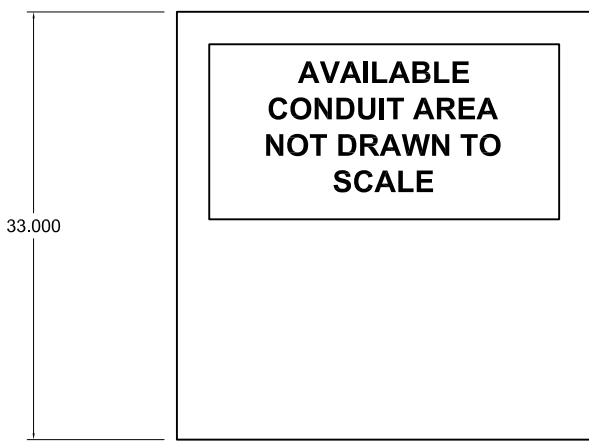


**SPECIFICATIONS**

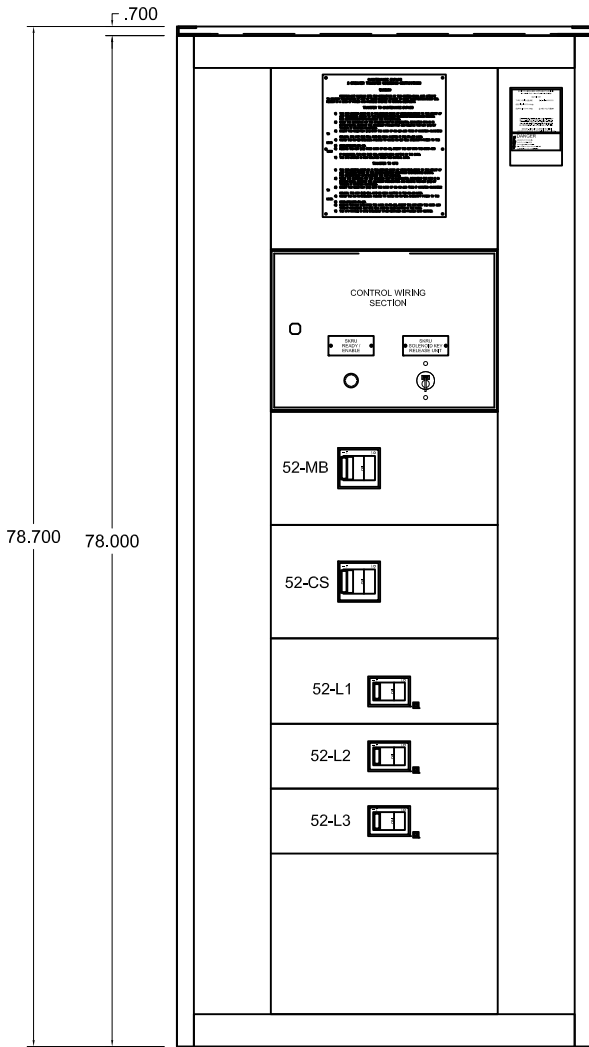
**DESCRIPTION:** 3x160 KVA N+1 TOSHIBA TIE CABINET  
**PART NUMBER:** T90TTC3X16KN1  
**AMPERAGE:** 500 AMPERE  
**SYSTEM VOLTAGE:** 480 VOLT, 3 PHASE, 3 WIRE  
**SHORT CIRCUIT CAPACITY:** 65 KA @ 480 VOLT  
**BUS BRACING:** 65 KA  
**UL LISTING:** UL 891  
**BUSSING:** SILVER PLATED COPPER (AMPACITY BASED ON 1000A/ SQ. INCH)  
**ENCLOSURE TYPE:** NEMA 1, INDOOR FREE STANDING  
**ACCESSIBILITY:** FRONT ACCESS REQUIRED  
**FINISH:** TOSHIBA G9000 BLACK - ELECTROSTATIC POWDERCOAT BAKED POLYESTER  
**KEY INTERLOCKS:** KIRK KEY INTERLOCK SCHEME 39 WITH SKRU  
**CONTROL WIRING:** ALL CIRCUIT BREAKER ACCESSORIES WIRED TO TERMINAL BLOCK IN CONTROL CUBICLE FOR CUSTOMER TERMINATION  
**LUGS:** FACTORY STANDARD MECHANICAL LUGS PROVIDED ON ALL MOLDED CASE  
**CABLE ENTRY:** TOP AND BOTTOM, SIDE ACCESS THROUGH REMOVABLE GLAND PLATES

**FRONT DOOR STANDARD**

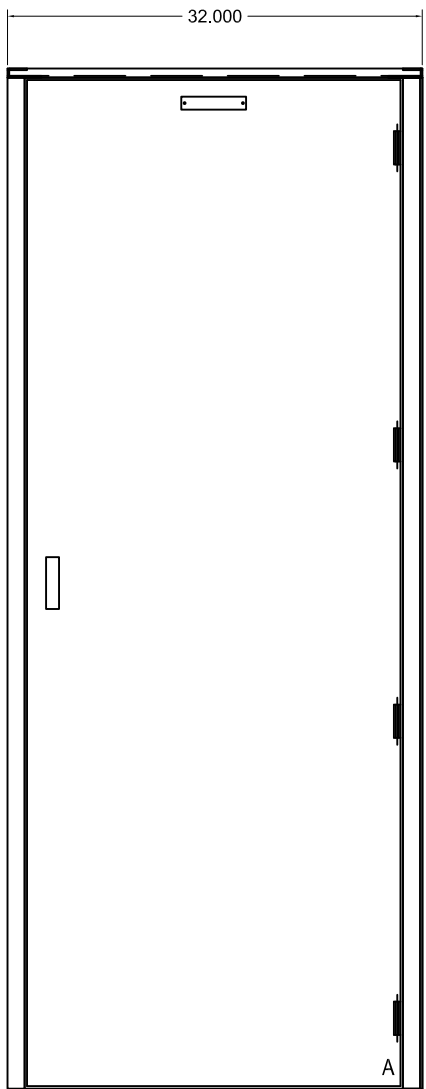
DEVICE SUMMARY	
DESIGNATION	DESCRIPTION
52-MB	SIEMENS SENTRON TYPE "HLXD" MOLDED CASE CIRCUIT BREAKER, UL489, FIXED MOUNT, MANUALLY OPERATED, 65KAIC@480V, 3 POLE, 600AF/500AT, THERMAL MAGNETIC TRIP UNIT, 2A/2B AUXILIARY CONTACTS, 24VDC SHUNT TRIP, KIRK KEY INTERLOCK, LINE SIDE MECHANICAL LUGS TO ACCEPT (2) 3/0-500KCMIL CU OR (2) 4/0-500KCMIL AL CABLES PER PHASE FROM INCOMING AC
52-CS	SIEMENS SENTRON TYPE "HLXD" MOLDED CASE CIRCUIT BREAKER, UL489, FIXED MOUNT, MANUALLY OPERATED, 65KAIC@480V, 3 POLE, 600AF/500AT, THERMAL MAGNETIC TRIP UNIT, 2A/2B AUXILIARY CONTACTS, 24VDC SHUNT TRIP, KIRK KEY INTERLOCK
52-L1, 52-L2, 52-L3	SIEMENS SENTRON TYPE "HFXD" MOLDED CASE CIRCUIT BREAKER, UL489, FIXED MOUNT, MANUALLY OPERATED, 65KAIC@480V, 3 POLE, 250AF/250AT, THERMAL MAGNETIC TRIP UNIT, 2A/2B AUXILIARY CONTACTS, 24VDC SHUNT TRIP, LINE SIDE MECHANICAL LUGS TO ACCEPT (1) #6 AWG-350KCMIL CU OR (1) #4AWG-350KCMIL AL CABLES PER PHASE FROM UPS MODULE OUTPUT



**PLAN VIEW**

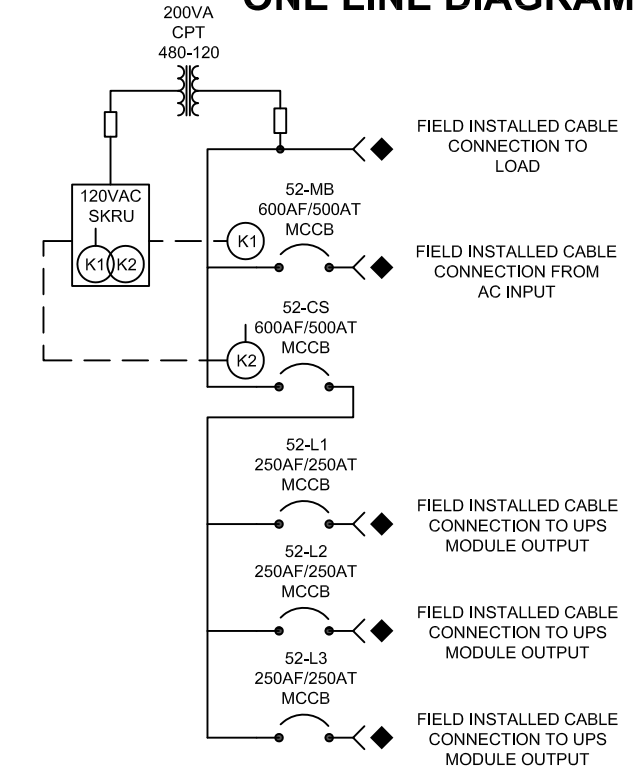


**ELEVATION  
SHOWN WITH DOOR REMOVED**



**ELEVATION  
SHOWN WITH DOOR**

**ONE LINE DIAGRAM**



FOR QUOTE	QO	
XXX	XXX	XXX
XXX	XXX	XXX
XXX	XXX	XXX

DRAWN BY: JE	DATE 05.31.2016
CHECKED BY:	DATE
APPROVED BY:	DATE

THIS MATERIAL IS THE EXCLUSIVE PROPERTY OF TOSHIBA INTERNATIONAL CORPORATION AND SHALL NOT BE REPRODUCED, USED OR DISCLOSED TO OTHERS UNLESS PRIOR WRITTEN AUTHORIZATION IS OBTAINED.

TITLE: **3x160 KVA N+1 G9000 UPS TOSHIBA TIE CABINET  
3 PHASE, 3 WIRE 480V, NEMA1 ENCLOSED,  
65KAIC@480V, 500A, P#T90TTC3X16KN1**

SCALE 1:16	ORDER NO. XXX
DRAWING NO. T90TTC3X16KN1	