

you can
Canon

DR-3080CII

Departmental Document Scanner

Select a versatile and ultra reliable scanning solution.

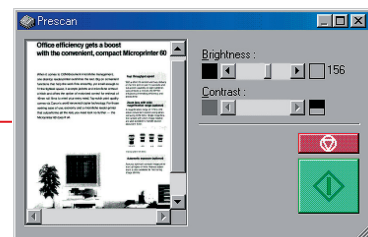
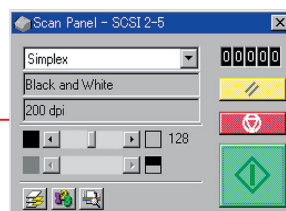
DR-3080CII





Compact, user-friendly desktop scanner with dependable results

Canon's next generation DR-3080CII scanner offers speed and flexibility in a compact format, with a range of unique features to enhance ease and efficiency. Ready to meet the most challenging demands of departmental scanning, the DR-3080CII offers flexible scanning modes with improved speed and image quality - as well as simplified operation. The DR-3080CII features 24-bit colour scanning and has two interfaces to choose from (SCSI III or Hi-Speed USB 2.0).



Superior scanning speed

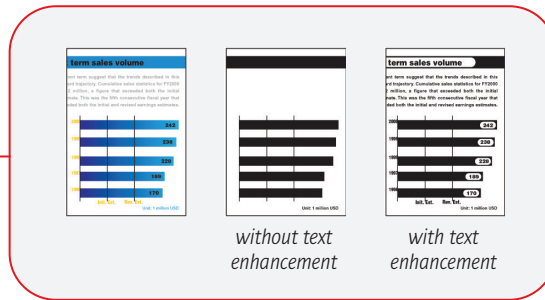
The DR-3080CII provides diverse scanning options so that you can create the image files which best match your needs. Standard text documents can be scanned in Black & White (Binary) mode at speeds of up to 40ppm (or 80 image per minute when duplexing). If your document contains photos, Error Diffusion or 256-level Greyscale mode deliver better results. Furthermore, the DR-3080CII offers a 24-bit Colour mode for either simplex or duplex scanning. Innovative technology promotes fast throughput whether you're scanning in colour or greyscale.

Easy, user-friendly operation

An on-screen 'scan panel' display enables quick and easy operation, allowing users to change settings via this virtual operation panel, even for batch separation. When simplex and duplex documents are mixed in a batch, a 'skip blank page' function automatically detects and discards blank pages. Other user-friendly features include up to 20 user-preference settings and a handy help function.

Time-saving, pre-scan mode

A unique 'pre-scan' mode simplifies operation and saves time when scanning a batch of documents. When viewing the image of the first page on screen you can adjust brightness and contrast and see immediate results (unlike the preview function). This setting is then applied to the rest of the batch, without having to re-scan the first page. This even works when scanning in black & white (binary) mode.



Productive paper handling

The highly evaluated document feeding capability of Canon's scanners guarantees that you always benefit from durable, flexible and reliable paper feeding, with simplex/duplex scanning for all sizes up to B4. The DR-3080CII can even handle larger sizes. It features the Folio function which has the ability to scan larger documents (between B4 and A3 sizes). You simply fold your document in half and feed it into the scanner. The DR-3080CII will then scan both sides of the folded document and combine the two sides into a single image.

Versatile range of applications

The DR-3080CII works with a wide range of software packages, offering an extensive range of imaging applications to suit your precise requirements.

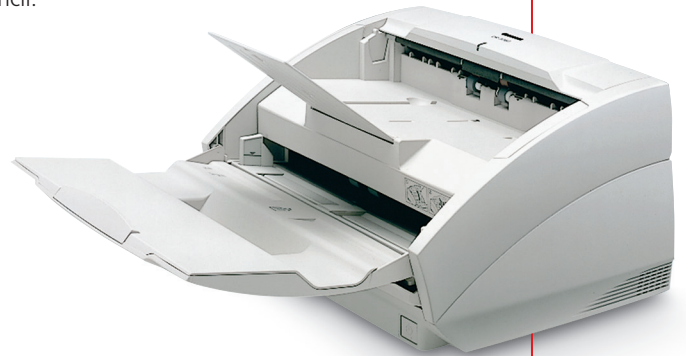
Bundled software for the DR-3080CII scanner includes ISIS™, TWAIN drivers, CapturePerfect for Windows® 98/ME/NT/2000/XP and Adobe Acrobat.

Advantageous accessories

An optional Endorser is available, which automatically stamps documents for control and tracking purposes. Another productive option is Canon's Exchange Roller Kit, ensuring maximum uptime throughout the scanner's entire lifetime.

Enhanced legibility for lighter text

When it comes to scanning for document management purposes, nothing is more essential than making sure that your image files can be easily read by others. To this end, the DR-3080CII features Advanced Text Enhancement for optimizing black and white images. Advanced Text Enhancement significantly improves the quality of image files derived under poor conditions, such as from documents with coloured backgrounds, with light coloured lettering, or documents filled out in pencil.



DR-3080CII features and benefits

- Duplex 24-bit colour & 256-level greyscale support
- High speed, high quality scanning
- Simplex/duplex scanning up to B4
- Folio scanning (B4 to A3 sizes)
- Convenient 'pre-scan' facility
- RGB colour drop-out
- Skip blank page function
- Skew correction by software
- User-friendly, on-screen scan panel
- NCR paper support
- Dual Interface with SCSI 3/USB2.0
- Bundled software: ISIS™, TWAIN drivers, CapturePerfect, Adobe Acrobat

Specifications DR-3080CII

Type	Desktop Sheet fed Scanner
Sensor	Sensor: Contact Image Sensor (CMOS CIS) Optical resolution 300 dpi
Light source	RGB 1 line LED array for front, yellow-green 1 line LED array for back
Scanning modes	Black & White (Binary): 300 x 300 High Speed, 300 x 300, 240 x 240, 200 x 200dpi - Simplex/Duplex 256-level Greyscale: 300 x 300 High Speed, 300 x 300, 240 x 240, 200 x 200 dpi - Simplex/Duplex Text Enhanced: 300 x 300 High Speed, 300 x 300, 240 x 240, 200 x 200 dpi - Simplex/Duplex Error Diffusion: 300 x 300 High Speed, 300 x 300, 240 x 240, 200 x 200 dpi - Simplex/Duplex 24-bit Colour: 100 x 100, 200 x 200dpi - Simplex/Duplex
Scanning speeds (A4 Portrait, Binary)	300 x 300 dpi High Speed: 40ppm (Simplex), 80ipm (Duplex) 200 x 200 dpi: 30ppm (Simplex), 60ipm (Duplex) 240 x 240 dpi: 25ppm (Simplex), 50ipm (Duplex) 300 x 300 dpi: 20ppm (Simplex), 40ipm (Duplex)
Scanning resolution	300 x 300dpi, 240 x 240dpi, 200 x 200dpi
Document feeding mode	Normal/Auto/Manual
Document size	Width: 55-257 mm Length: 70-364 mm Thickness: Auto Feed 0.06-0.15 mm Manual Feed 0.05-0.20 mm

Document type	NCR paper and perforated paper for a binder acceptable
ADF	10 mm (Approx. 100 sheets in case of 80 g/m ²)
Document size detection	By drivers
Document stacker	Face down in 10 mm (Approx. 100 sheets in case of 80 g/m ²)
Output interface	SCSI III, Hi-Speed USB 2.0
Software	ISIS/TWAIN Driver, CapturePerfect, Adobe Acrobat
Others	Count only Margin scanning Skew correction by software RGB dropout colour
Dimensions (WxDxH)	Tray closed: 344 x 280 x 191 mm Tray opened: 344 x 555 x 191 mm
Weight	8.1 kg
Optional accessories	Endorser ED500 Exchange Roller Kit Ink Roller
<small>*All company and/or product names are trademarks and/or registered trademarks of their respective manufacturers in their markets and/or countries. Canon reserves the right to change specifications without notice.</small>	

you can
Canon

Canon Electronics Inc.
www.canon.com

Canon Europa N.V.
www.canon-europe.com

Canon (UK) Ltd
Woodhatch, Reigate
Surrey RH2 8BF
Telephone No: 08000 353535
Facsimile No: 01737 220022
www.canon.co.uk

Canon Ireland
Arena Road, Sandyford
Industrial Estate
Dublin 18, Ireland
Telephone No: 01-2052400
Facsimile No: 01-2958141
www.canon.ie



Conforms to the International Energy Star program as an MFP

